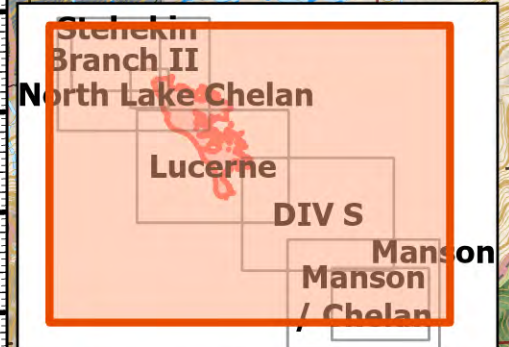
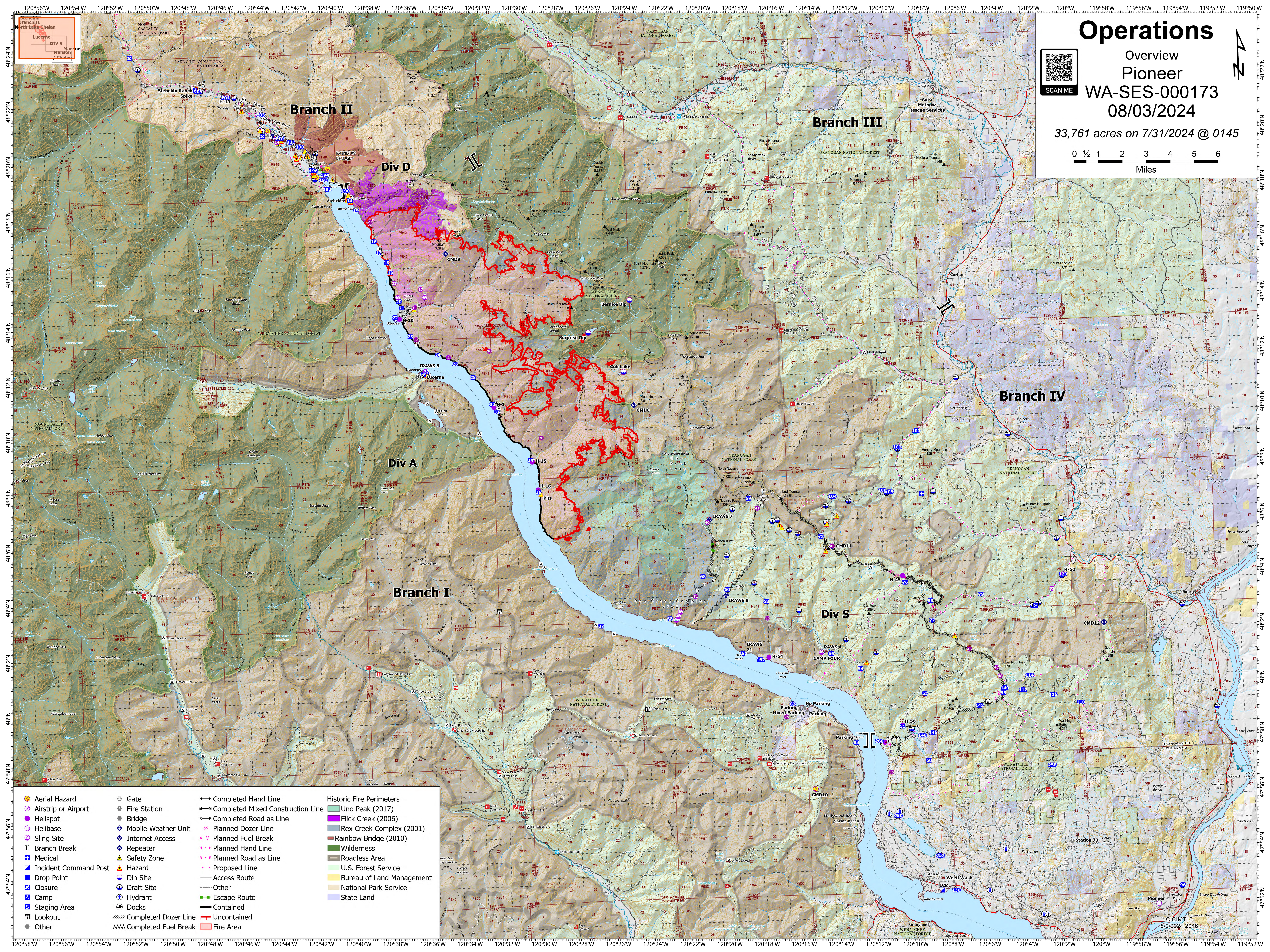
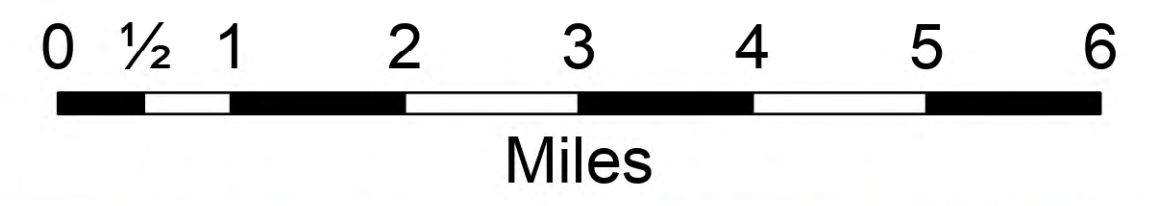


Operations

Overview
Pioneer
WA-SES-000173
08/03/2024

33,761 acres on 7/31/2024 @ 0145



Aerial Hazard	Gate	Completed Hand Line	Historic Fire Perimeters
Airstrip or Airport	Fire Station	Completed Mixed Construction Line	Uno Peak (2017)
Helispot	Bridge	Completed Road as Line	Flick Creek (2006)
Helibase	Mobile Weather Unit	Planned Dozer Line	Rex Creek Complex (2001)
Sling Site	Internet Access	Planned Fuel Break	Rainbow Bridge (2010)
Branch Break	Repeater	Planned Hand Line	Wilderness
Medical	Safety Zone	Planned Road as Line	Roadless Area
Incident Command Post	Hazard	Proposed Line	U.S. Forest Service
Drop Point	Dip Site	Access Route	Bureau of Land Management
Closure	Draft Site	Other	National Park Service
Camp	Hydrant	Escape Route	State Land
Staging Area	Docks	Contained	
Lookout	Completed Dozer Line	Uncontained	
Other	Completed Fuel Break	Fire Area	