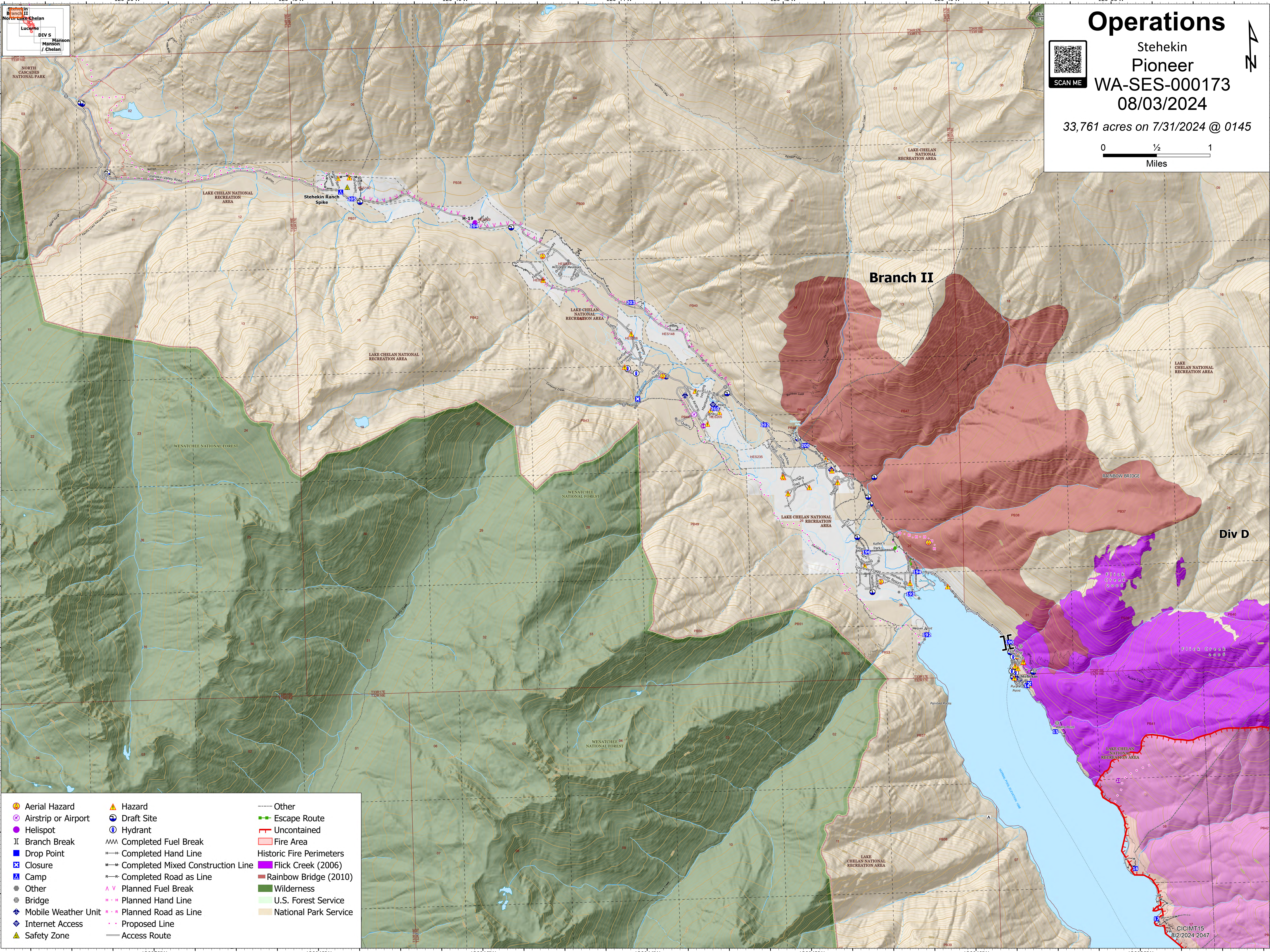
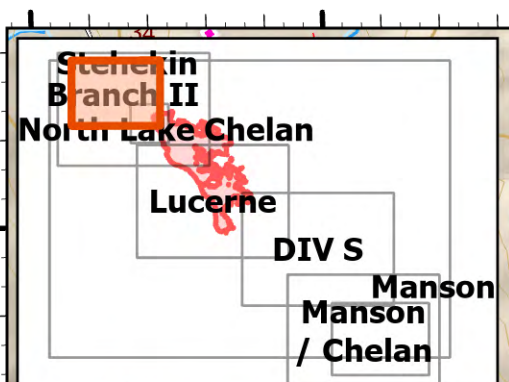
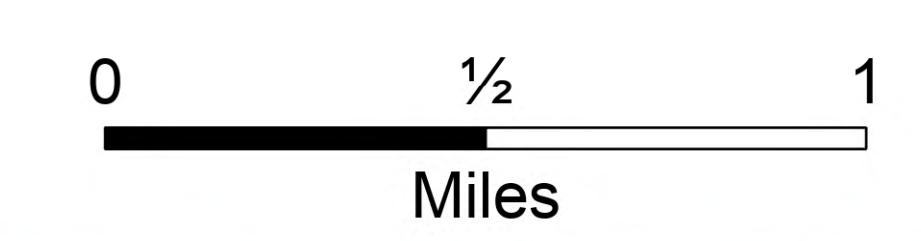


# Operations

Stehekin  
Pioneer  
WA-SES-000173  
08/03/2024

33,761 acres on 7/31/2024 @ 0145



- |                     |                                   |                       |
|---------------------|-----------------------------------|-----------------------|
| Aerial Hazard       | Hazard                            | Other                 |
| Airstrip or Airport | Draft Site                        | Escape Route          |
| Helispot            | Hydrant                           | Uncontained           |
| Branch Break        | Completed Fuel Break              | Fire Area             |
| Drop Point          | Completed Hand Line               | Flick Creek (2006)    |
| Closure             | Completed Mixed Construction Line | Rainbow Bridge (2010) |
| Camp                | Completed Road as Line            | Wilderness            |
| Other               | Planned Fuel Break                | U.S. Forest Service   |
| Bridge              | Planned Hand Line                 | National Park Service |
| Mobile Weather Unit | Planned Road as Line              |                       |
| Internet Access     | Proposed Line                     |                       |
| Safety Zone         | Access Route                      |                       |

CICIMT15  
8/2/2024 2047