

# Security Transportation

Pioneer Fire  
WA-SES-000173  
08/03/2024

33,761 acres on 7/31/2024 @ 0145

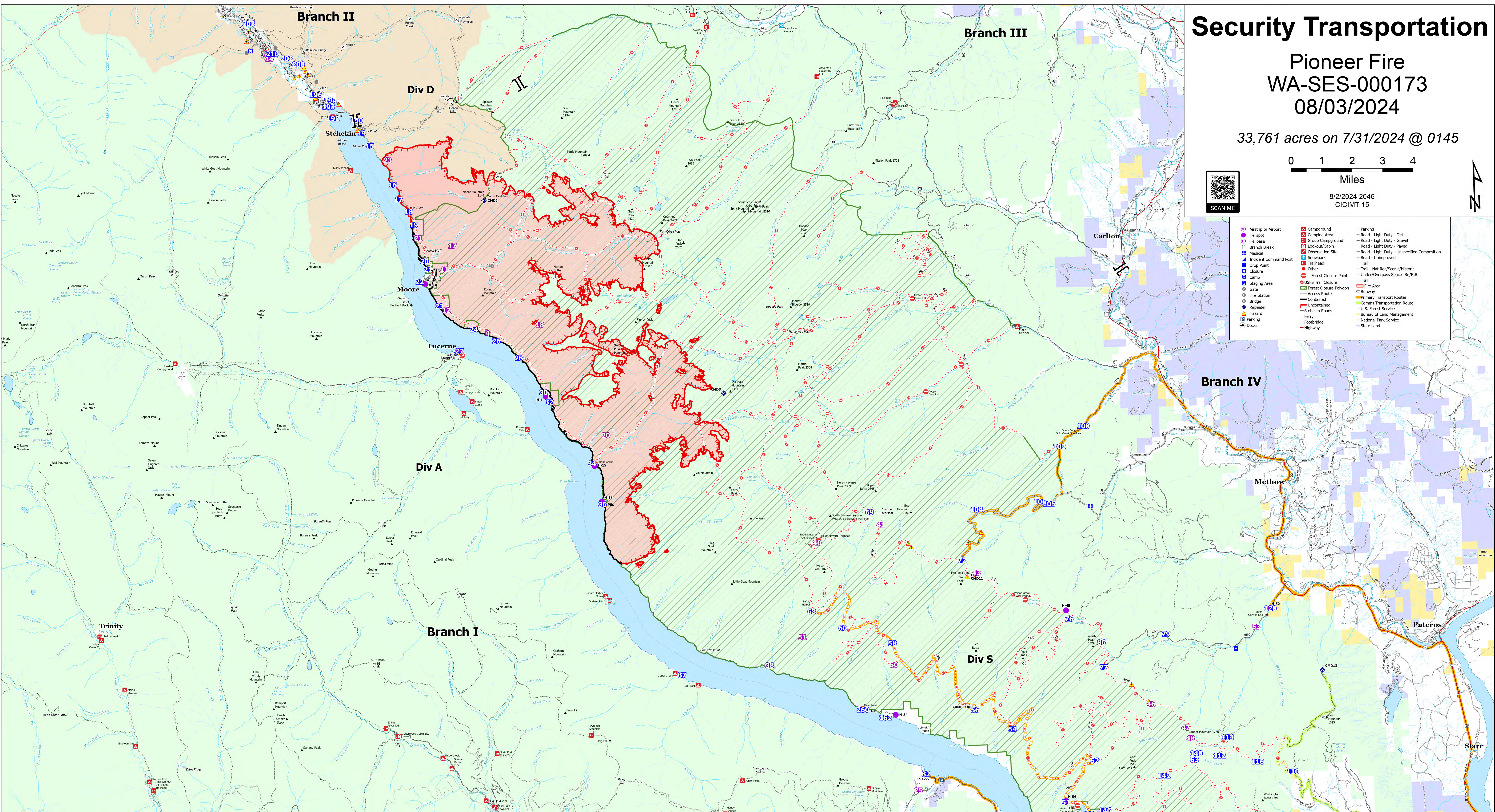
0 1 2 3 4  
Miles

8/2/2024 1046

CICIMT 15



- Airstrip or Airport
- Helipad
- Branch Break
- Medical
- Incident Command Post
- Drop Point
- Closure
- Camp
- Staging Area
- Gate
- Fire Station
- Bridge
- Repeater
- Parking
- Docks
- Campground
- Camping Area
- Group Campground
- Lockout/Cabin
- Observation Site
- Snowpark
- Freshhead
- Other
- USFS Trail Closure
- Forest Closure Polygon
- Contained
- Uncontained
- Stakein Roads
- Ferry
- Roadbridge
- Highway
- Parking
- Road - Light Duty - Dirt
- Road - Light Duty - Gravel
- Road - Light Duty - Paved
- Road - Light Duty - Unspecified Composition
- Road - Unimproved
- Trail - Nat Rec/Semi/Historic
- Under/Overpass Space - Rd/R.R.
- Trail
- Fire Area
- Runway
- Primary Transport Routes
- Contours/Transportation Route
- U.S. Forest Service
- Bureau of Land Management
- National Park Service
- State Land



FC Point Type	Label	Comments	Latitude WGS84 DOM	Longitude WGS84 DOM	FC Point Type	Label	Comments	Latitude WGS84 DOM	Longitude WGS84 DOM
Camp	CAMP FOCUS		48° 01' 48.77" N	120° 14' 00.4" W	Drop Point	56	Camp four below the 8000 ft. ridge	48° 01' 48.77" N	120° 14' 00.4" W
Camp	Lucerne		48° 01' 51.07" N	120° 13' 50.0" W	Drop Point	57		48° 01' 51.07" N	120° 13' 50.0" W
Camp	Stehakin Ranch Side		48° 02' 24.67" N	120° 13' 44.0" W	Drop Point	58		48° 02' 24.67" N	120° 13' 44.0" W
Drop Point	100	DP-100	48° 08' 41.7" N	120° 08' 07.7" W	Drop Point	60	DP-60	48° 08' 40.7" N	120° 07' 50.7" W
Drop Point	102		48° 08' 40.7" N	120° 08' 07.7" W	Drop Point	61	DP-61	48° 01' 27.5" N	120° 13' 50.0" W
Drop Point	104	DP-104 dark site being pulled at DP104 due to low creek water. Road Redesign 7/26/2024	48° 01' 15.7" N	120° 13' 50.0" W	Drop Point	72		48° 01' 20.7" N	120° 14' 20.7" W
Drop Point	105		48° 01' 20.7" N	120° 14' 20.7" W	Drop Point	76		48° 01' 20.7" N	120° 14' 20.7" W
Drop Point	106		48° 01' 30.7" N	120° 13' 50.0" W	Drop Point	77		48° 01' 30.7" N	120° 13' 50.0" W
Drop Point	107		48° 01' 30.7" N	120° 13' 50.0" W	Drop Point	78		48° 01' 30.7" N	120° 13' 50.0" W
Drop Point	112		48° 01' 30.7" N	120° 13' 50.0" W	Drop Point	83		48° 01' 30.7" N	120° 13' 50.0" W
Drop Point	114		48° 01' 30.7" N	120° 13' 50.0" W	Drop Point	84		48° 01' 30.7" N	120° 13' 50.0" W
Drop Point	115	Good option for clear medicine site for road crew and staging area for equipment now that DP 110 will have so much timber	48° 01' 30.7" N	120° 13' 50.0" W	Drop Point	85		48° 01' 30.7" N	120° 13' 50.0" W
Drop Point	116	Black Canyon Snow Park, two volume staged jumps, map 2223-246 and note 1232-246	48° 01' 30.7" N	120° 13' 50.0" W	Drop Point	86		48° 01' 30.7" N	120° 13' 50.0" W
Drop Point	118		48° 01' 30.7" N	120° 13' 50.0" W	Drop Point	87		48° 01' 30.7" N	120° 13' 50.0" W
Drop Point	14	DP 14	48° 01' 48.77" N	120° 13' 50.0" W	Drop Point	88		48° 01' 48.77" N	120° 13' 50.0" W
Drop Point	140	Drop point 140	48° 01' 48.77" N	120° 13' 50.0" W	Drop Point	89		48° 01' 48.77" N	120° 13' 50.0" W
Drop Point	142		48° 01' 48.77" N	120° 13' 50.0" W	Drop Point	90		48° 01' 48.77" N	120° 13' 50.0" W
Drop Point	146	Drop point 146, would need to be pushed out with a dumper for side tanks and parking	48° 01' 48.77" N	120° 13' 50.0" W	Drop Point	91		48° 01' 48.77" N	120° 13' 50.0" W
Drop Point	148	Drop point 148	48° 01' 48.77" N	120° 13' 50.0" W	Drop Point	92		48° 01' 48.77" N	120° 13' 50.0" W
Drop Point	16		48° 01' 48.77" N	120° 13' 50.0" W	Drop Point	93		48° 01' 48.77" N	120° 13' 50.0" W
Drop Point	162	Volume change from 142-262 as per DDP's assigned numbers	48° 01' 48.77" N	120° 13' 50.0" W	Drop Point	94		48° 01' 48.77" N	120° 13' 50.0" W
Drop Point	17		48° 01' 48.77" N	120° 13' 50.0" W	Drop Point	95		48° 01' 48.77" N	120° 13' 50.0" W
Drop Point	18	DP 18	48° 01' 48.77" N	120° 13' 50.0" W	Drop Point	96		48° 01' 48.77" N	120° 13' 50.0" W
Drop Point	19		48° 01' 48.77" N	120° 13' 50.0" W	Drop Point	97		48° 01' 48.77" N	120° 13' 50.0" W
Drop Point	190		48° 01' 48.77" N	120° 13' 50.0" W	Drop Point	98		48° 01' 48.77" N	120° 13' 50.0" W
Drop Point	192		48° 01' 48.77" N	120° 13' 50.0" W	Drop Point	99		48° 01' 48.77" N	120° 13' 50.0" W
Drop Point	193	Hubbard Cabin. Land to level site for firefighters, medics, and public in the event smoke darkness or other impacts to transport. Thunder pit, owned by mountain barge services, can be parked here. All residents will take over beds during an event.	48° 01' 48.77" N	120° 13' 50.0" W	Drop Point	100		48° 01' 48.77" N	120° 13' 50.0" W
Drop Point	194		48° 01' 48.77" N	120° 13' 50.0" W	Drop Point	101		48° 01' 48.77" N	120° 13' 50.0" W
Drop Point	196		48° 01' 48.77" N	120° 13' 50.0" W	Drop Point	102		48° 01' 48.77" N	120° 13' 50.0" W
Drop Point	198		48° 01' 48.77" N	120° 13' 50.0" W	Drop Point	103		48° 01' 48.77" N	120° 13' 50.0" W
Drop Point	200		48° 01' 48.77" N	120° 13' 50.0" W	Drop Point	104		48° 01' 48.77" N	120° 13' 50.0" W
Drop Point	202		48° 01' 48.77" N	120° 13' 50.0" W	Drop Point	105		48° 01' 48.77" N	120° 13' 50.0" W
Drop Point	204		48° 01' 48.77" N	120° 13' 50.0" W	Drop Point	106		48° 01' 48.77" N	120° 13' 50.0" W
Drop Point	206		48° 01' 48.77" N	120° 13' 50.0" W	Drop Point	107		48° 01' 48.77" N	120° 13' 50.0" W
Drop Point	208		48° 01' 48.77" N	120° 13' 50.0" W	Drop Point	108		48° 01' 48.77" N	120° 13' 50.0" W
Drop Point	210		48° 01' 48.77" N	120° 13' 50.0" W	Drop Point	109		48° 01' 48.77" N	120° 13' 50.0" W
Drop Point	212		48° 01' 48.77" N	120° 13' 50.0" W	Drop Point	110		48° 01' 48.77" N	120° 13' 50.0" W
Drop Point	214		48° 01' 48.77" N	120° 13' 50.0" W	Drop Point	111		48° 01' 48.77" N	120° 13' 50.0" W
Drop Point	216		48° 01' 48.77" N	120° 13' 50.0" W	Drop Point	112		48° 01' 48.77" N	120° 13' 50.0" W
Drop Point	218		48° 01' 48.77" N	120° 13' 50.0" W	Drop Point	113		48° 01' 48.77" N	120° 13' 50.0" W
Drop Point	220		48° 01' 48.77" N	120° 13' 50.0" W	Drop Point	114		48° 01' 48.77" N	120° 13' 50.0" W
Drop Point	222		48° 01' 48.77" N	120° 13' 50.0" W	Drop Point	115		48° 01' 48.77" N	120° 13' 50.0" W
Drop Point	224		48° 01' 48.77" N	120° 13' 50.0" W	Drop Point	116		48° 01' 48.77" N	120° 13' 50.0" W
Drop Point	226		48° 01' 48.77" N	120° 13' 50.0" W	Drop Point	117		48° 01' 48.77" N	120° 13' 50.0" W
Drop Point	228		48° 01' 48.77" N	120° 13' 50.0" W	Drop Point	118		48° 01' 48.77" N	120° 13' 50.0" W
Drop Point	230		48° 01' 48.77" N	120° 13' 50.0" W	Drop Point	119		48° 01' 48.77" N	120° 13' 50.0" W
Drop Point	232		48° 01' 48.77" N	120° 13' 50.0" W	Drop Point	120		48° 01' 48.77" N	120° 13' 50.0" W
Drop Point	234		48° 01' 48.77" N	120° 13' 50.0" W	Drop Point	121		48° 01' 48.77" N	120° 13' 50.0" W
Drop Point	236		48° 01' 48.77" N	120° 13' 50.0" W	Drop Point	122		48° 01' 48.77" N	120° 13' 50.0" W
Drop Point	238		48° 01' 48.77" N	120° 13' 50.0" W	Drop Point	123		48° 01' 48.77" N	120° 13' 50.0" W
Drop Point	240		48° 01' 48.77" N	120° 13' 50.0" W	Drop Point	124		48° 01' 48.77" N	120° 13' 50.0" W
Drop Point	242		48° 01' 48.77" N	120° 13' 50.0" W	Drop Point	125		48° 01' 48.77" N	120° 13' 50.0" W
Drop Point	244		48° 01' 48.77" N	120° 13' 50.0" W	Drop Point	126		48° 01' 48.77" N	120° 13' 50.0" W
Drop Point	246		48° 01' 48.77" N	120° 13' 50.0" W	Drop Point	127		48° 01' 48.77" N	120° 13' 50.0" W
Drop Point	248		48° 01' 48.77" N	120° 13' 50.0" W	Drop Point	128		48° 01' 48.77" N	120° 13' 50.0" W
Drop Point	250		48° 01' 48.77" N	120° 13' 50.0" W	Drop Point	129		48° 01' 48.77" N	120° 13' 50.0" W
Drop Point	252		48° 01' 48.77" N	120° 13' 50.0" W	Drop Point	130		48° 01' 48.77" N	120° 13' 50.0" W
Drop Point	254		48° 01' 48.77" N	120° 13' 50.0" W	Drop Point	131		48° 01' 48.77" N	120° 13' 50.0" W
Drop Point	256		48° 01' 48.77" N	120° 13' 50.0" W	Drop Point	132		48° 01' 48.77" N	120° 13' 50.0" W
Drop Point	258		48° 01' 48.77" N	120° 13' 50.0" W	Drop Point	133		48° 01' 48.77" N	120° 13' 50.0" W
Drop Point	260		48° 01' 48.77" N	120° 13' 50.0" W	Drop Point	134		48° 01' 48.77" N	120° 13' 50.0" W
Drop Point	262		48° 01' 48.77" N	120° 13' 50.0" W	Drop Point	135		48° 01' 48.77" N	120° 13' 50.0" W
Drop Point	264		48° 01' 48.77" N	120° 13' 50.0" W	Drop Point	136		48° 01' 48.77" N	120° 13' 50.0" W
Drop Point	266		48° 01' 48.77" N	120° 13' 50.0" W	Drop Point	137		48° 01' 48.77" N	120° 13' 50.0" W
Drop Point	268		48° 01' 48.77" N	120° 13' 50.0" W	Drop Point	138		48° 01' 48.77" N	120° 13' 50.0" W
Drop Point	270		48° 01' 48.77" N	120° 13' 50.0" W	Drop Point	139		48° 01' 48.77" N	120° 13' 50.0" W
Drop Point	272		48° 01' 48.77" N	120° 13' 50.0" W	Drop Point	140		48° 01' 48.77" N	120° 13' 50.0" W
Drop Point	274		48° 01' 48.77" N	120° 13' 50.0" W	Drop Point	141		48° 01' 48.77" N	120° 13' 50.0" W
Drop Point	276		48° 01' 48.77" N	120° 13' 50.0" W	Drop Point	142		48° 01' 48.77" N	120° 13' 50.0" W
Drop Point	278		48° 01' 48.77" N	120° 13' 50.0" W	Drop Point	143		48° 01' 48.77" N	120° 13' 50.0" W
Drop Point	280		48° 01' 48.77" N	120° 13' 50.0" W	Drop Point	144		48° 01' 48.77" N	120° 13' 50.0" W
Drop Point	282		48° 01' 48.77" N	120° 13' 50.0" W	Drop Point	145		48° 01' 48.77" N	120° 13' 50.0" W
Drop Point	284		48° 01' 48.77" N	120° 13' 50.0" W	Drop Point	146		48° 01' 48.77" N	120° 13' 50.0" W
Drop Point	286		48° 01' 48.77" N	120° 13' 50.0" W	Drop Point	147		48° 01' 48.77" N	120° 13' 50.0" W
Drop Point	288		48° 01' 48.77" N	120° 13' 50.0" W	Drop Point	148		48° 01' 48.77" N	120° 13' 50.0" W
Drop Point	290		48° 01' 48.77" N	120° 13' 50.0" W	Drop Point	149		48° 01' 48.77" N	120° 13' 50.0" W
Drop Point	292		48° 01' 48.77" N	120° 13' 50.0" W	Drop Point	150		48° 01' 48.77" N	120° 13' 50.0" W
Drop Point	294		48° 01' 48.77" N	120° 13' 50.0" W	Drop Point	151		48° 01' 48.77" N	120° 13' 50.0" W
Drop Point	296		48° 01' 48.77" N	120° 13' 50.0" W	Drop Point	152		48° 01' 48.77" N	120° 13' 50.0" W
Drop Point	298		48° 01' 48.77" N	120° 13' 50.0" W	Drop Point	153		48° 01' 48.77" N	120° 13' 50.0" W
Drop Point	300		48° 01' 48.77" N	120° 13' 50.0" W	Drop Point	154		48° 01' 48.77" N	120° 13' 50.0" W