

# Transportation Map

Pioneer Fire  
WA-SES-000173  
08/03/2024

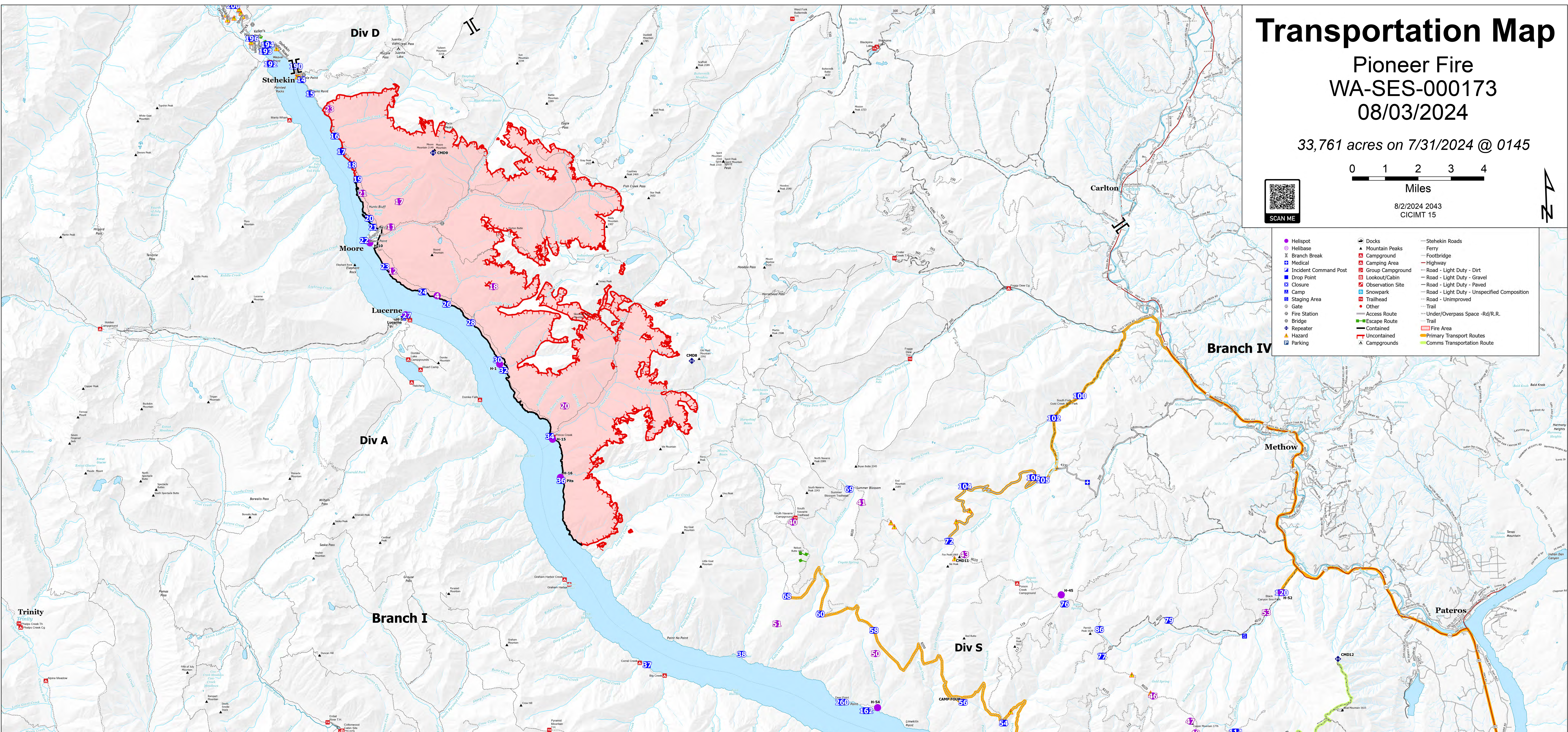
33,761 acres on 7/31/2024 @ 0145

0 1 2 3 4  
Miles

8/2/2024 2043  
CICIMT 15



- Helispot
- ⌘ Helibase
- ⌘ Branch Break
- ⌘ Medical
- ⌘ Incident Command Post
- ⌘ Drop Point
- ⌘ Closure
- ⌘ Camp
- ⌘ Staging Area
- ⌘ Gate
- ⌘ Fire Station
- ⌘ Bridge
- ⌘ Repeater
- ⌘ Hazard
- ⌘ Parking
- ⌘ Docks
- ⌘ Mountain Peaks
- ⌘ Campground
- ⌘ Camping Area
- ⌘ Lookout/Cabin
- ⌘ Observation Site
- ⌘ Snowpark
- ⌘ Trailhead
- ⌘ Other
- ⌘ Access Route
- ⌘ Escape Route
- ⌘ Contained
- ⌘ Uncountained
- ⌘ Campgrounds
- ⌘ Stehekin Roads
- ⌘ Ferry
- ⌘ Footbridge
- ⌘ Highway
- ⌘ Road - Light Duty - Dirt
- ⌘ Road - Light Duty - Gravel
- ⌘ Road - Light Duty - Paved
- ⌘ Road - Light Duty - Unspecified Composition
- ⌘ Road - Unimproved
- ⌘ Trail
- ⌘ Under/Overpass Space - Rd/R.R.
- ⌘ Trail
- ⌘ Fire Area
- ⌘ Primary Transport Routes
- ⌘ Comms Transportation Route



IC Point Type	Label	Comments	Latitude WGS84 DDM	Longitude WGS84 DDM	IC Point Type	Label	Comments	Latitude WGS84 DDM	Longitude WGS84 DDM
Camp	CAMP FOUR		48° 01.447' N	120° 14.004' W	Drop Point	72		48° 05.707' N	120° 14.237' W
Camp	Lucerne		48° 12.071' N	120° 35.550' W	Drop Point	76		48° 03.939' N	120° 09.871' W
Camp	Stehekin Ranch Spoke		48° 22.623' N	120° 47.465' W	Drop Point	77		48° 03.526' N	120° 08.460' W
Drop Point	100	DP100	48° 09.413' N	120° 06.973' W	Drop Point	79		48° 03.406' N	120° 05.789' W
Drop Point	102	DP102	48° 08.852' N	120° 10.024' W	Drop Point	82		47° 59.669' N	120° 16.182' W
Drop Point	104	DP104	48° 07.143' N	120° 13.630' W	Drop Point	84		47° 58.183' N	120° 12.817' W
Drop Point	105	DP105	48° 02.235' N	120° 10.549' W	Drop Point	86		48° 03.244' N	120° 08.538' W
Drop Point	106		48° 07.305' N	120° 10.824' W	Drop Point	90		47° 50.162' N	120° 02.284' W
Drop Point	110		47° 59.356' N	120° 06.623' W	Drop Point	96	Reservoir fill site - added for backhaul	47° 52.587' N	120° 55.563' W
Drop Point	112		47° 58.802' N	120° 09.113' W	Hazard	98	Exposed culvert	48° 06.492' N	120° 11.840' W
Drop Point	114		48° 00.402' N	120° 03.339' W	Hazard	99	Watercrossing, tight and unstable downslope	48° 06.219' N	120° 14.021' W
Drop Point	116	Good option for closer medic site for road crew and staging area for equipment now that DP 110 will have no reach timber	47° 59.672' N	120° 02.105' W	Hazard	100	Culvert failure, downslope side of road	48° 06.144' N	120° 14.462' W
Drop Point	120	Black Canyon Snow Park, two volume staged pumps msk-1222-248 and msk-1222-246	48° 04.021' N	120° 01.323' W	Hazard	101	Culvert failure, downslope side of road	48° 06.253' N	120° 15.580' W
Drop Point	130		47° 52.709' N	120° 07.223' W	Hazard	102	Culvert failure, downslope side of road	48° 05.244' N	120° 14.133' W
Drop Point	14	DP 14	48° 18.467' N	120° 38.203' W	Hazard	103	Partial road collapse - rotten wooden culvert.	48° 01.154' N	120° 12.142' W
Drop Point	140	Drop point 140	47° 59.977' N	120° 04.646' W	Hazard	104	Old wall	48° 12.112' N	120° 35.407' W
Drop Point	142		47° 59.373' N	120° 06.093' W	Hazard	105	Electrical hazard.	48° 18.625' N	120° 39.426' W
Drop Point	146	Drop point 146, would need to be pushed out with a dozer for fella tanks and parking	47° 58.453' N	120° 08.062' W	Hazard	106	Flammable liquids, including flammable liquids and gas (propane)	48° 18.605' N	120° 39.290' W
Drop Point	148	Drop point 148	47° 58.372' N	120° 09.239' W	Hazard	107	Gas Fuel Pump	48° 18.528' N	120° 39.462' W
Drop Point	15		48° 18.067' N	120° 38.954' W	Hazard	108	Business in water that sells gasoline and propane. Has large number of propane tanks and large quantity of gasoline	48° 20.126' N	120° 41.868' W
Drop Point	16		48° 18.598' N	120° 38.007' W	Hazard	109	Business in water that sells gasoline and propane. Has large number of propane tanks and large quantity of gasoline	48° 19.596' N	120° 41.238' W
Drop Point	162	*please change from 162-262 as per SOP's assigned numbers	48° 01.318' N	120° 17.821' W	Hazard	110	Business in water that sells gasoline and propane. Has large number of propane tanks and large quantity of gasoline	48° 19.475' N	120° 41.222' W
Drop Point	17	DP 17	48° 16.521' N	120° 37.792' W	Hazard	111	Building Contains 55 Gal. drum of Hypochlorite Solution (IRG 154, UN 1791). If compressed by fire, isolate at least 1/2 mile radius from location.	48° 20.777' N	120° 43.042' W
Drop Point	18	DP 18	48° 16.162' N	120° 37.361' W	Hazard	112	55gal barrel of hypochlorite solution(UN 1791, IRG 154) inside pumphouse. Can aerosolize if exposed to heat and flame. If structure is compromised by fire, site should be isolated in a 0.5 miles radius.	48° 20.937' N	120° 43.222' W
Drop Point	19	DP 19	48° 15.781' N	120° 37.177' W	Hazard	113	55gal barrel of hypochlorite solution(UN 1791, IRG 154) inside pumphouse. Can aerosolize if exposed to heat and flame. If structure is compromised by fire, site should be isolated in a 0.5 miles radius.	48° 20.214' N	120° 42.178' W
Drop Point	190		48° 18.805' N	120° 39.479' W	Hazard	114	55gal barrel of hypochlorite solution(UN 1791, IRG 154) inside pumphouse. Can aerosolize if exposed to heat and flame. If structure is compromised by fire, site should be isolated in a 0.5 miles radius.	48° 20.256' N	120° 41.586' W
Drop Point	192		48° 18.885' N	120° 40.481' W	Hazard	115	Two unlabelled fuel tanks with pump.	48° 19.325' N	120° 40.677' W
Drop Point	193	Hubbard Cabin. Land to boat evac site for firefighters, medics, and public in the event smoke darkness or other impacts to transport. Thunder jet, owned by mountain barge 40 residents will take own boats during an evac	48° 19.221' N	120° 40.467' W	Hazard	116	55gal barrel of hypochlorite solution(UN 1791, IRG 154) inside pumphouse. Can aerosolize if exposed to heat and flame. If structure is compromised by fire, site should be isolated in a 0.5 miles radius.	48° 21.416' N	120° 43.982' W
Drop Point	194		48° 19.599' N	120° 40.578' W	Hazard	117	Fuel tank	48° 14.404' N	120° 35.996' W
Drop Point	196		48° 19.572' N	120° 41.189' W	Hazard	118	1000-gallon Diesel tank for generator, within 40 feet of contingency line and heavy brush debris. Runs fuel treatment plant.	48° 20.759' N	120° 42.937' W
Drop Point	20	DP 20	48° 14.734' N	120° 36.772' W	Hazard	119	Propane Tank	48° 20.160' N	120° 41.520' W
Drop Point	200		48° 20.453' N	120° 41.893' W	Hazard	120	1000-gallon Diesel tank for generator, within 40 feet of contingency line and heavy brush debris. Runs fuel treatment plant.	48° 18.652' N	120° 39.323' W
Drop Point	202		48° 20.430' N	120° 42.780' W	Hazard	121	Large diesel tank. Propane tank nearby. Both need substantial work to remove adjacent fuels.	48° 18.656' N	120° 39.329' W
Drop Point	203		48° 21.657' N	120° 43.667' W	Hazard	122	Very large buried propane tank. Most of tank is underground, vents and fill station are above ground.	48° 18.469' N	120° 39.364' W
Drop Point	204		48° 21.316' N	120° 45.852' W	Hazard	123	REAF Rickett. 6 snags that could fall in road. Fallers can drop them sideways on slope. Power lines re-entrant. 7.14.24.	48° 01.288' N	120° 40.222' W
Drop Point	205		48° 22.565' N	120° 47.242' W	Hazard	124	REAF Rickett. YOUNG pacific rattlesnake crossing hand line. Possible den site nearby (more young and adults). Flagged in pink as a warning to proceed with caution. 7.14.24.	48° 01.510' N	120° 06.620' W
Drop Point	21	21	48° 14.499' N	120° 36.635' W	Hazard	125	Barbed wire on ground, 20' flagged with READ tags.	48° 15.844' N	120° 31.242' W
Drop Point	210		48° 20.773' N	120° 42.961' W	Hazard	126	2 fuel propane tanks behind house, 5 and 50 gallon. 7.15.24	48° 22.757' N	120° 42.263' W
Drop Point	212		48° 14.156' N	120° 37.941' W	Hazard	127	Barbed wire, flagged with READ tags, TSM 071824	48° 22.751' N	120° 42.950' W
Drop Point	213		48° 13.446' N	120° 36.206' W	Hazard	128	2 1200 gallon propane tanks in between 2 park residences. 7.20.24	48° 18.704' N	120° 39.388' W
Drop Point	24	DP 24	48° 12.751' N	120° 34.758' W	Hazard	129	REAF Rickett. In historic well house - 6 gallons of hypochlorite solution. 7.20.24. wood building scraped around base.	48° 20.223' N	120° 41.188' W
Drop Point	250		48° 15.485' N	120° 33.691' W	Hazard	130	REAF Rickett. In historic well house - 6 gallons of hypochlorite solution. 7.20.24. wood building scraped around base.	48° 20.082' N	120° 41.330' W
Drop Point	252		47° 53.984' N	120° 08.507' W	Hazard	131	Propane tank	48° 21.149' N	120° 40.073' W
Drop Point	258		47° 57.117' N	120° 02.293' W	Hazard	132	Community burn pile	48° 20.667' N	120° 43.086' W
Drop Point	260	DP 26	48° 12.465' N	120° 33.820' W	Hazard	133	Advised by locals not to travel past this point	48° 21.873' N	120° 45.033' W
Drop Point	262	Drop Point 260	48° 01.563' N	120° 18.762' W	Hazard	134	Open site (2) Madeline Rd, Manson, WA 98031	48° 07.449' N	120° 24.830' W
Drop Point	268	Drop Point 268	47° 58.215' N	120° 11.569' W	Hazard	135	proposed Medvac Site, needs improvement	47° 52.730' N	120° 08.487' W
Drop Point	27	DP 27	48° 12.152' N	120° 35.400' W	Medical	136	Wind wash and Staging Area	48° 07.126' N	120° 08.794' W
Drop Point	28	DP 28	48° 11.899' N	120° 34.867' W	Staging Area	137	no lawboys, suitable for crew trucks and engines	47° 49.902' N	120° 09.307' W
Drop Point	30		48° 10.898' N	120° 31.879' W	Staging Area	138		48° 02.921' N	120° 03.053' W
Drop Point	32	DP 32 - high quality Dock	48° 10.615' N	120° 31.657' W					
Drop Point	34		48° 08.832' N	120° 29.812' W					
Drop Point	36		48° 07.657' N	120° 29.532' W					
Drop Point	37		48° 02.725' N	120° 26.376' W					
Drop Point	38		48° 02.917' N	120° 23.648' W					
Drop Point	50	Wind dependent	47° 57.449' N	120° 08.525' W					
Drop Point	51	DP 51	47° 58.722' N	120° 10.294' W					
Drop Point	52		47° 59.889' N	120° 09.117' W					
Drop Point	53	Potential drop point. At the 8200 & R210 jct.	47° 59.796' N	120° 04.780' W					
Drop Point	54	DP 54	48° 00.864' N	120° 12.439' W					
Drop Point	56	Camp four below the 8200 RD. Spoke.	48° 01.448' N	120° 14.002' W					
Drop Point	58		48° 03.427' N	120° 17.402' W					
Drop Point	60		48° 03.906' N	120° 19.494' W					
Drop Point	66	DP 66	48° 04.407' N	120° 20.789' W					
Drop Point	69	DP 69	48° 01.175' N	120° 18.182' W					

