

Transportation Map

Pioneer Fire
WA-SES-000173
08/04/2024

35,477 acres on 8/3/2024 @ 0245

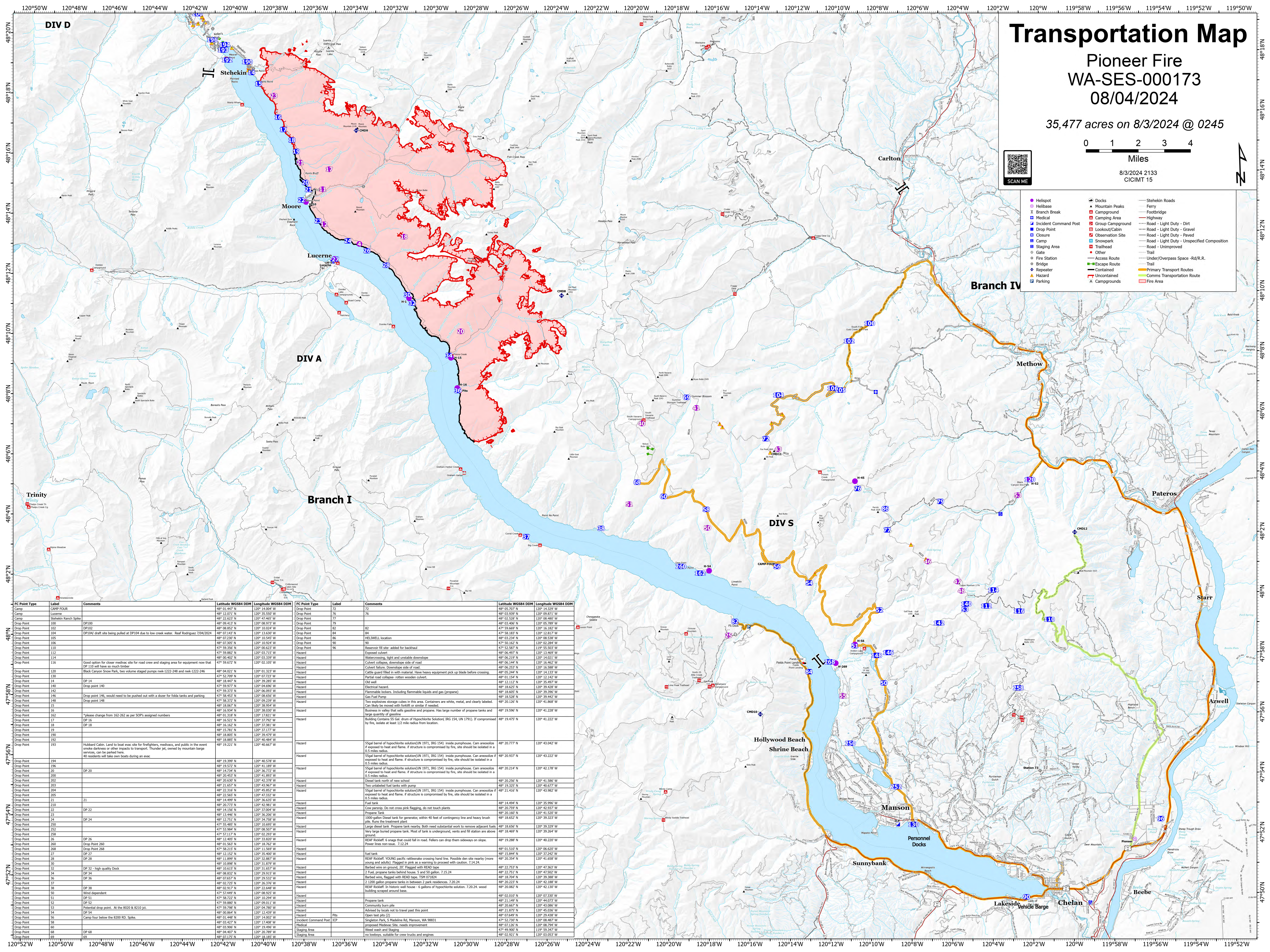


Miles

8/3/2024 2133
CICIMT 15



- Helipoint
- Helibase
- X Branch Break
- Medical
- Incident Command Post
- Drop Point
- Closure
- Staging Area
- Gate
- Fire Station
- Bridge
- Repairer
- ▲ Hazard
- Parking
- Mountain Peaks
- Campground
- Camping Area
- Lookout/Cabin
- Observation Site
- Snowpark
- Trailhead
- Other
- Access Route
- Escape Route
- Contained
- Uncontained
- Campgrounds
- Stehekin Roads
- Ferry
- Footbridge
- Highway
- Road - Light Duty - Dirt
- Road - Light Duty - Gravel
- Road - Light Duty - Paved
- Road - Light Duty - Unspecified Composition
- Trail
- Under/Overpass Space - Rd/R.R.
- Trail
- Primary Transport Routes
- Comms Transportation Route
- Fire Area



IC Point Type	Label	Comments	Latitude WGS84 DDM	Longitude WGS84 DDM	IC Point Type	Label	Comments	Latitude WGS84 DDM	Longitude WGS84 DDM
Camp	CAMP FOUR		48° 01.447' N	120° 14.004' W	Drop Point	72		48° 05.707' N	120° 14.237' W
Camp	Lucerne		48° 12.071' N	120° 35.507' W	Drop Point	76		48° 03.939' N	120° 09.871' W
Camp	Stehekin Ranch Spoke		48° 22.623' N	120° 47.465' W	Drop Point	77		48° 03.529' N	120° 08.469' W
Drop Point	100	DP100	48° 09.413' N	120° 06.973' W	Drop Point	79		48° 03.406' N	120° 05.789' W
Drop Point	102	DP102	48° 08.852' N	120° 10.024' W	Drop Point	82		47° 59.669' N	120° 16.182' W
Drop Point	104	DP104	48° 07.143' N	120° 13.630' W	Drop Point	84		47° 58.183' N	120° 12.817' W
Drop Point	105	DP105	48° 02.235' N	120° 10.549' W	Drop Point	86		48° 03.244' N	120° 08.538' W
Drop Point	106		48° 07.305' N	120° 10.824' W	Drop Point	90		47° 50.162' N	120° 02.284' W
Drop Point	110		47° 59.336' N	120° 06.623' W	Drop Point	96	Reservoir fill site added for backhaul	47° 52.587' N	120° 55.563' W
Drop Point	112		47° 58.802' N	120° 09.113' W	Hazard	98	Exposed culvert	48° 06.497' N	120° 11.440' W
Drop Point	114		48° 00.402' N	120° 03.339' W	Hazard	100	Watercrossing, tight and unstable downslope	48° 06.219' N	120° 14.021' W
Drop Point	116	Good option for closer medic site for road crew and staging area for equipment now that DP 110 will have no reach timber	47° 59.672' N	120° 02.105' W	Hazard	102	Culvert collapse, downslope side of road	48° 06.144' N	120° 16.462' W
Drop Point	120	Black Canyon Snow Park, two volume staged pumps msk-1222-248 and msk-1222-246	48° 04.021' N	120° 01.323' W	Hazard	104	Culvert failure, downslope side of road	48° 06.253' N	120° 15.580' W
Drop Point	130		47° 52.709' N	120° 07.223' W	Hazard	106	Cattle guard filled in with material. Have heavy equipment pick up blade before crossing	48° 05.244' N	120° 14.133' W
Drop Point	134	DP 14	47° 52.709' N	120° 07.223' W	Hazard	108	Partial road collapse: rotten wooden culvert.	48° 01.154' N	120° 12.142' W
Drop Point	140	Drop point 140	47° 59.977' N	120° 04.646' W	Hazard	110	Cold wall	48° 12.112' N	120° 15.407' W
Drop Point	142		47° 59.373' N	120° 06.093' W	Hazard	112	Electrical hazard.	48° 18.625' N	120° 39.426' W
Drop Point	146	Drop point 146, would need to be pushed out with a dozer for fella tanks and parking	47° 58.453' N	120° 08.062' W	Hazard	114	Flammable lockers, including flammable liquids and gas (propane)	47° 58.605' N	120° 39.290' W
Drop Point	148	Drop point 148	47° 58.372' N	120° 09.239' W	Hazard	116	Gas Fuel Pump	48° 18.528' N	120° 39.462' W
Drop Point	15		48° 18.067' N	120° 38.954' W	Hazard	118	Business in water that sells gasoline and propane. Has large number of propane tanks and large quantity of gasoline	48° 20.126' N	120° 41.868' W
Drop Point	16		48° 18.598' N	120° 38.007' W	Hazard	120	Building contains 55 Gal. drum of Hypochlorite Solution (IRG 154, UN 1791). If compressed by fire, isolate at least 1/2 mile radius from location.	48° 19.596' N	120° 41.238' W
Drop Point	162	*please change from 162-262 as per SOP's assigned numbers	48° 01.318' N	120° 17.821' W	Hazard	122		48° 19.475' N	120° 41.222' W
Drop Point	17	DP 16	48° 16.521' N	120° 37.792' W	Hazard	124		48° 20.777' N	120° 43.042' W
Drop Point	18	DP 18	48° 16.162' N	120° 37.760' W	Hazard	126		48° 20.937' N	120° 43.222' W
Drop Point	19		48° 15.781' N	120° 37.177' W	Hazard	128		48° 20.214' N	120° 42.178' W
Drop Point	190		48° 18.805' N	120° 39.479' W	Hazard	130		48° 20.256' N	120° 41.586' W
Drop Point	192		48° 18.885' N	120° 40.481' W	Hazard	132		48° 19.325' N	120° 40.677' W
Drop Point	194	Hubbard Cabin. Land to boat evac site for firefighters, medics, and public in the event smoke darkness or other impacts to transport. Thunder jet, owned by mountain barge 40 residents will take own boats during an evac	48° 19.221' N	120° 40.467' W	Hazard	134		48° 21.416' N	120° 43.982' W
Drop Point	196		48° 19.599' N	120° 40.578' W	Hazard	136		48° 14.406' N	120° 35.996' W
Drop Point	198		48° 19.572' N	120° 41.189' W	Hazard	138		48° 20.759' N	120° 42.937' W
Drop Point	20	DP 20	48° 14.734' N	120° 36.772' W	Hazard	140		48° 20.160' N	120° 41.520' W
Drop Point	200		48° 20.453' N	120° 41.893' W	Hazard	142		48° 18.652' N	120° 39.320' W
Drop Point	202		48° 20.430' N	120° 42.706' W	Hazard	144		48° 15.849' N	120° 39.264' W
Drop Point	203		48° 21.657' N	120° 43.667' W	Hazard	146		48° 01.510' N	120° 40.620' W
Drop Point	204		48° 22.316' N	120° 45.852' W	Hazard	148		48° 15.844' N	120° 37.442' W
Drop Point	205		48° 22.565' N	120° 47.242' W	Hazard	150		48° 20.354' N	120° 41.628' W
Drop Point	21	21	48° 14.499' N	120° 36.635' W	Hazard	152		48° 22.757' N	120° 42.263' W
Drop Point	210		48° 20.772' N	120° 42.961' W	Hazard	154		48° 22.791' N	120° 42.952' W
Drop Point	212	DP 22	48° 14.156' N	120° 37.044' W	Hazard	156		48° 18.704' N	120° 39.388' W
Drop Point	213		48° 13.446' N	120° 36.206' W	Hazard	158		48° 20.223' N	120° 42.182' W
Drop Point	214	DP 24	48° 12.751' N	120° 34.758' W	Hazard	160		47° 49.902' N	120° 39.707' W
Drop Point	216		47° 55.485' N	120° 13.695' W	Hazard	162		48° 02.010' N	120° 07.330' W
Drop Point	220		47° 53.984' N	120° 08.507' W	Hazard	164		48° 21.149' N	120° 40.073' W
Drop Point	224		47° 57.117' N	120° 02.293' W	Hazard	166		48° 20.667' N	120° 43.086' W
Drop Point	226	DP 26	48° 12.465' N	120° 33.820' W	Hazard	168		48° 21.873' N	120° 45.026' W
Drop Point	228	DP 26	48° 01.563' N	120° 18.762' W	Hazard	170		48° 07.449' N	120° 24.638' W
Drop Point	230		47° 58.215' N	120° 11.569' W	Hazard	172		47° 52.730' N	120° 08.482' W
Drop Point	232	DP 27	48° 12.152' N	120° 35.400' W	Hazard	174		48° 02.126' N	120° 08.794' W
Drop Point	234		48° 11.899' N	120° 34.867' W	Hazard	176		47° 49.902' N	120° 39.707' W
Drop Point	236	DP 28	48° 10.888' N	120° 31.879' W	Hazard	178		48° 02.921' N	120° 03.053' W
Drop Point	238		48° 10.615' N	120° 31.657' W	Hazard	180			
Drop Point	240	DP 30	48° 08.832' N	120° 29.812' W	Hazard	182			
Drop Point	242	DP 32 - high quality Dock	48° 07.657' N	120° 29.532' W	Hazard	184			
Drop Point	244		48° 02.725' N	120° 26.376' W	Hazard	186			
Drop Point	246		48° 02.912' N	120° 23.648' W	Hazard	188			
Drop Point	248	DP 34	47° 53.449' N	120° 08.925' W	Hazard	190			
Drop Point	250	Wind dependent	47° 58.722' N	120° 10.294' W	Hazard	192			
Drop Point	252		47° 59.889' N	120° 09.011' W	Hazard	194			
Drop Point	254	Potential drop point. At the 8200 & R210 jct.	47° 59.796' N	120° 04.780' W	Hazard	196			
Drop Point	256		48° 00.864' N	120° 12.439' W	Hazard	198			
Drop Point	258	Camp four below the 8200 RD. Spike.	48° 01.448' N	120° 14.002' W	Hazard	200			
Drop Point	260		48° 03.427' N	120° 12.406' W	Hazard	202			
Drop Point	262		48° 03.906' N	120° 19.496' W	Hazard	204			
Drop Point	264		48° 04.407' N	120° 20.789' W	Hazard	206			
Drop Point	266	DP 68	48° 01.125' N	120° 18.182' W	Hazard	208			
Drop Point	268				Hazard	210			
Drop Point	270				Hazard	212			
Drop Point	272				Hazard	214			
Drop Point	274				Hazard	216			
Drop Point	276				Hazard	218			
Drop Point	278				Hazard	220			
Drop Point	280				Hazard	222			
Drop Point	282				Hazard	224			
Drop Point	284				Hazard	226			
Drop Point	286				Hazard	228			
Drop Point	288				Hazard	230			
Drop Point	290				Hazard	232			
Drop Point	292				Hazard	234			
Drop Point	294				Hazard	236			
Drop Point	296				Hazard	238			
Drop Point	298				Hazard	240			
Drop Point	300				Hazard	242			
Drop Point	302				Hazard	244			
Drop Point	304				Hazard	246			
Drop Point	306				Hazard	248			
Drop Point	308				Hazard	250			
Drop Point	310				Hazard	252			
Drop Point	312				Hazard	254			
Drop Point	314				Hazard	256			
Drop Point	316				Hazard	258			
Drop Point	318				Hazard	260			
Drop Point	320				Hazard	262			
Drop Point	322				Hazard	264			
Drop Point	324				Hazard	266			
Drop Point	326				Hazard	268			
Drop Point	328				Hazard	270			
Drop Point	330				Hazard	272			
Drop Point	332				Hazard	274			
Drop Point	334				Hazard	276			
Drop Point	336				Hazard	278			
Drop Point	338				Hazard	280			
Drop Point	340				Hazard	282			
Drop Point	342				Hazard	284			
Drop Point	344				Hazard	286			
Drop Point	346				Hazard	288			
Drop Point	348				Hazard	290			
Drop Point	350				Hazard	292			