

Transportation

Pioneer Fire

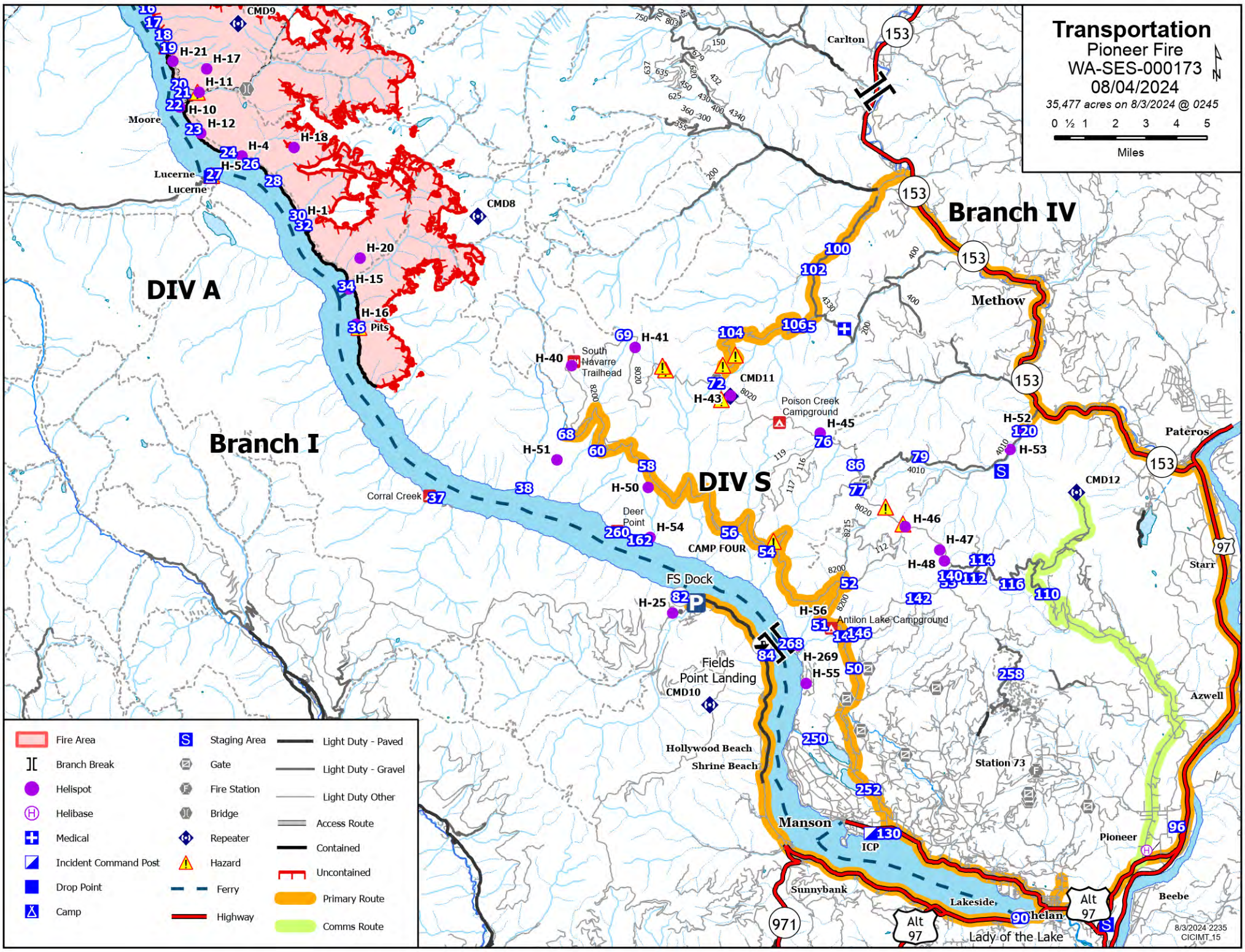
WA-SES-000173

08/04/2024

35,477 acres on 8/3/2024 @ 0245

0 1/2 1 2 3 4 5

Miles



- | | | |
|-----------------------|--------------|---------------------|
| Fire Area | Staging Area | Light Duty - Paved |
| Branch Break | Gate | Light Duty - Gravel |
| Helispot | Fire Station | Light Duty Other |
| Helibase | Bridge | Access Route |
| Medical | Repeater | Contained |
| Incident Command Post | Hazard | Uncontained |
| Drop Point | Ferry | Primary Route |
| Camp | Highway | Comms Route |