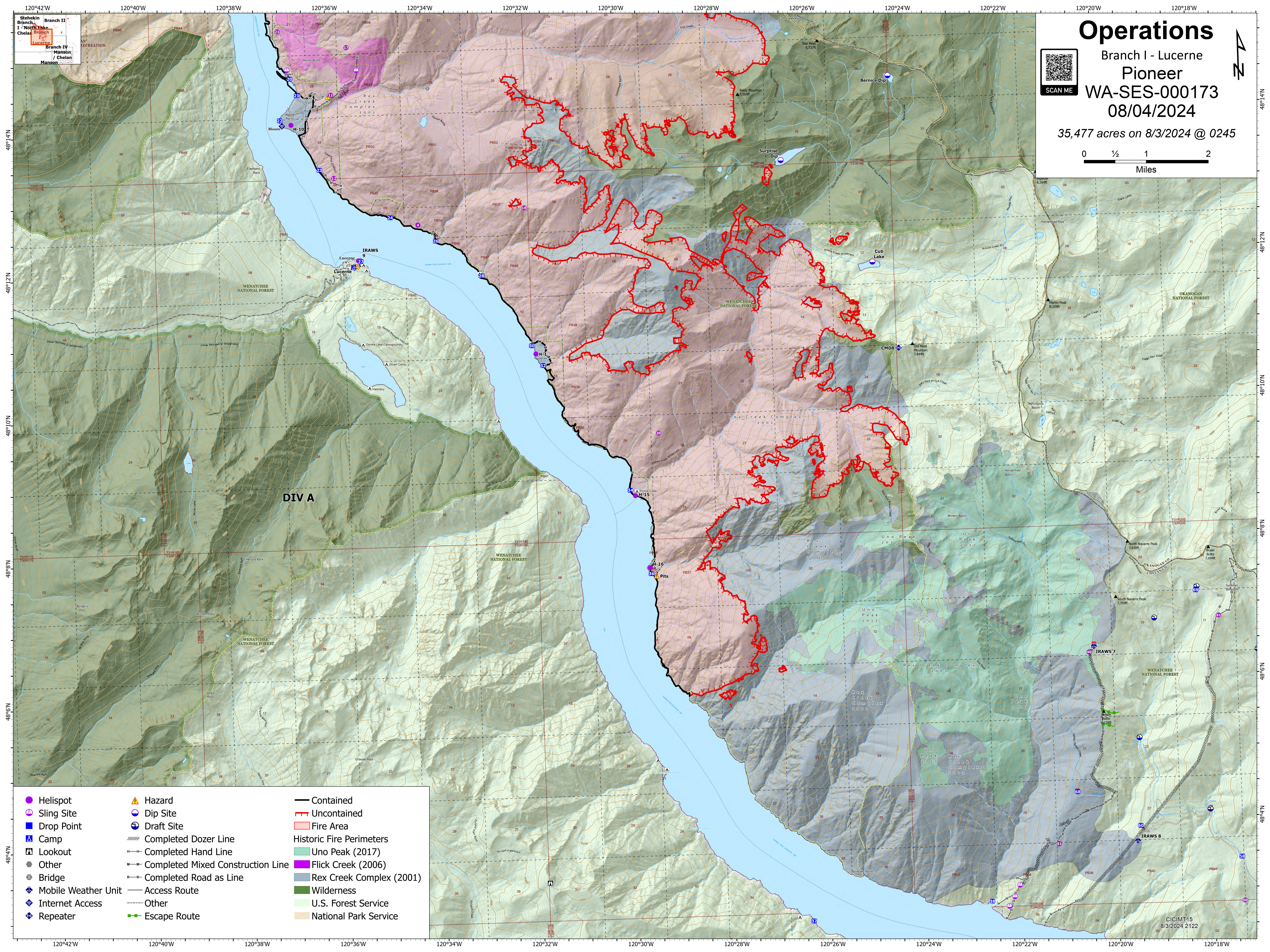
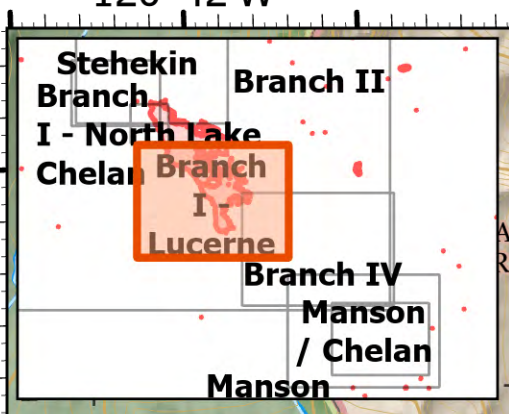
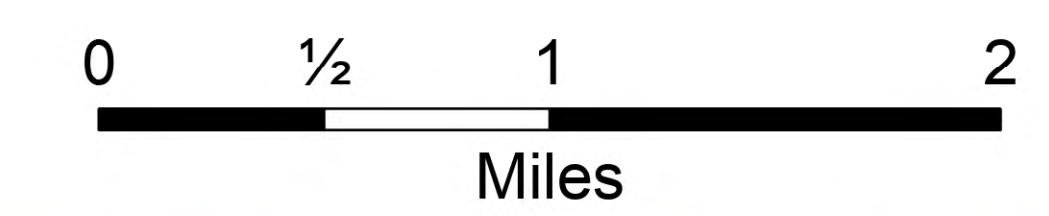


Operations

Branch I - Lucerne
Pioneer
WA-SES-000173
08/04/2024

35,477 acres on 8/3/2024 @ 0245



- | | | |
|-----------------------|-------------------------------------|----------------------------|
| ● Helispot | ▲ Hazard | — Contained |
| ○ Sling Site | ⊙ Dip Site | — Uncontained |
| ■ Drop Point | ⊙ Draft Site | ■ Fire Area |
| ⊙ Camp | ⊙ Completed Dozer Line | — Historic Fire Perimeters |
| ⊙ Lookout | ⊙ Completed Hand Line | ■ Uno Peak (2017) |
| ● Other | ⊙ Completed Mixed Construction Line | ■ Flick Creek (2006) |
| ⊙ Bridge | ⊙ Completed Road as Line | ■ Rex Creek Complex (2001) |
| ⊙ Mobile Weather Unit | — Access Route | ■ Wilderness |
| ⊙ Internet Access | ⊙ Other | ■ U.S. Forest Service |
| ⊙ Repeater | ⊙ Escape Route | ■ National Park Service |