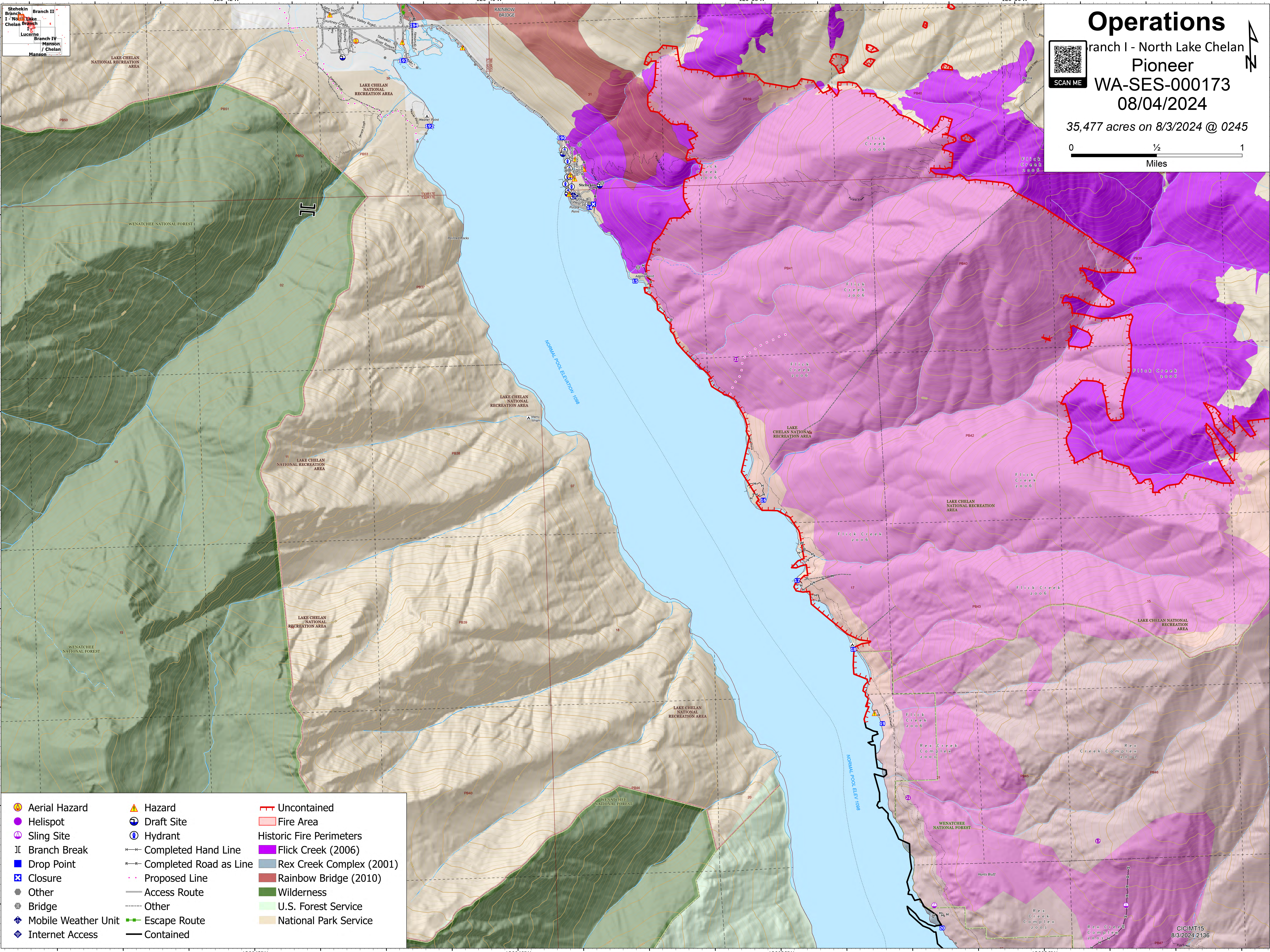
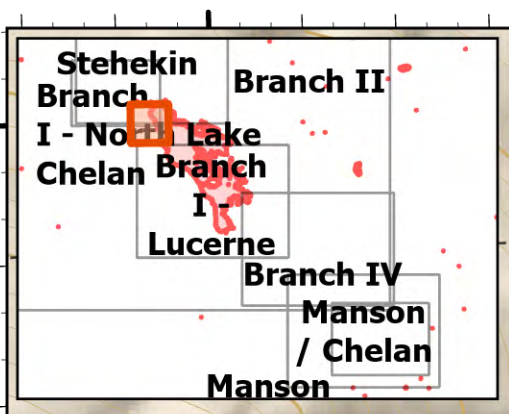
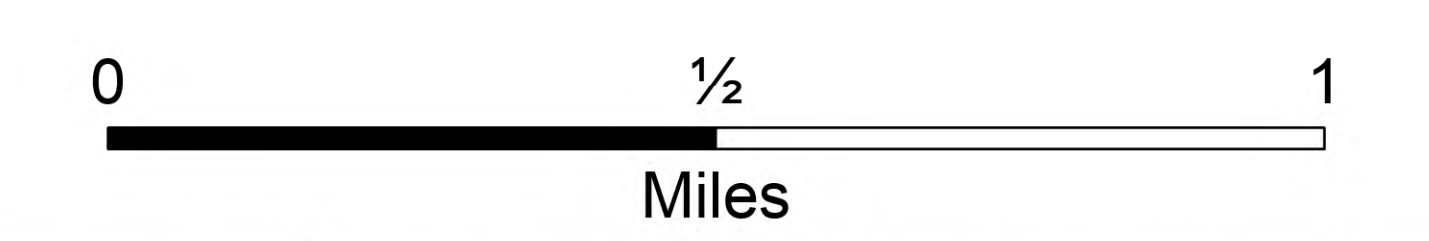


Operations

Branch I - North Lake Chelan
Pioneer
WA-SES-000173
08/04/2024

35,477 acres on 8/3/2024 @ 0245



- | | | |
|---------------------|------------------------|--------------------------|
| Aerial Hazard | Hazard | Uncontained |
| Helispot | Draft Site | Fire Area |
| Sling Site | Hydrant | Historic Fire Perimeters |
| Branch Break | Completed Hand Line | Flick Creek (2006) |
| Drop Point | Completed Road as Line | Rex Creek Complex (2001) |
| Closure | Proposed Line | Rainbow Bridge (2010) |
| Other | Access Route | Wilderness |
| Bridge | Other | U.S. Forest Service |
| Mobile Weather Unit | Escape Route | National Park Service |
| Internet Access | Contained | |