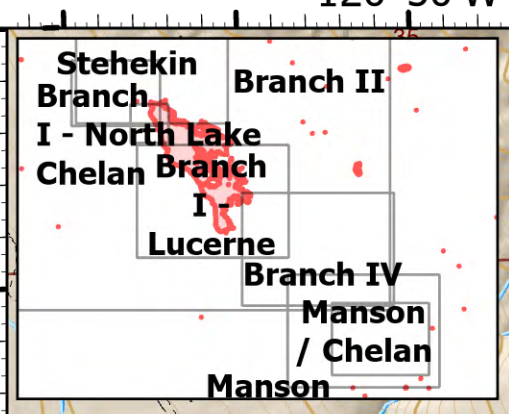
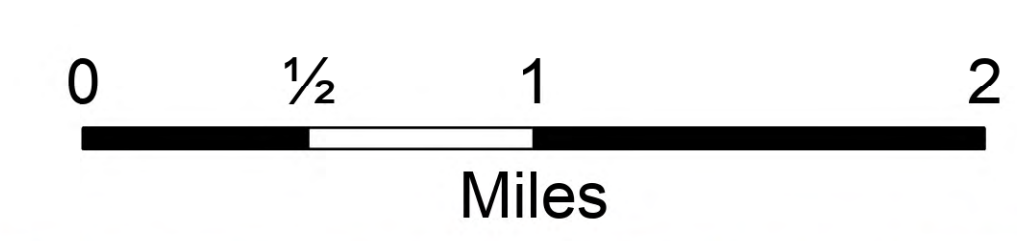


Operations

Branch II
Pioneer
WA-SES-000173
08/04/2024

35,477 acres on 8/3/2024 @ 0245



Branch II

DIV M

DIV D

- | | | |
|--|--|--|
| <ul style="list-style-type: none">Aerial HazardAirstrip or AirportHelispotDivision BreakBranch BreakDrop PointClosureCampOtherBridgeMobile Weather UnitInternet AccessRepeater | <ul style="list-style-type: none">Safety ZoneHazardDraft SiteHydrantCompleted Fuel BreakCompleted Hand LineCompleted Mixed Construction LineCompleted Road as LinePlanned Fuel BreakPlanned Hand LinePlanned Road as LineProposed LineAccess Route | <ul style="list-style-type: none">OtherEscape RouteUncontainedFire AreaHistoric Fire PerimetersFlick Creek (2006)Rex Creek Complex (2001)Rainbow Bridge (2010)WildernessU.S. Forest ServiceBureau of Land ManagementNational Park Service |
|--|--|--|