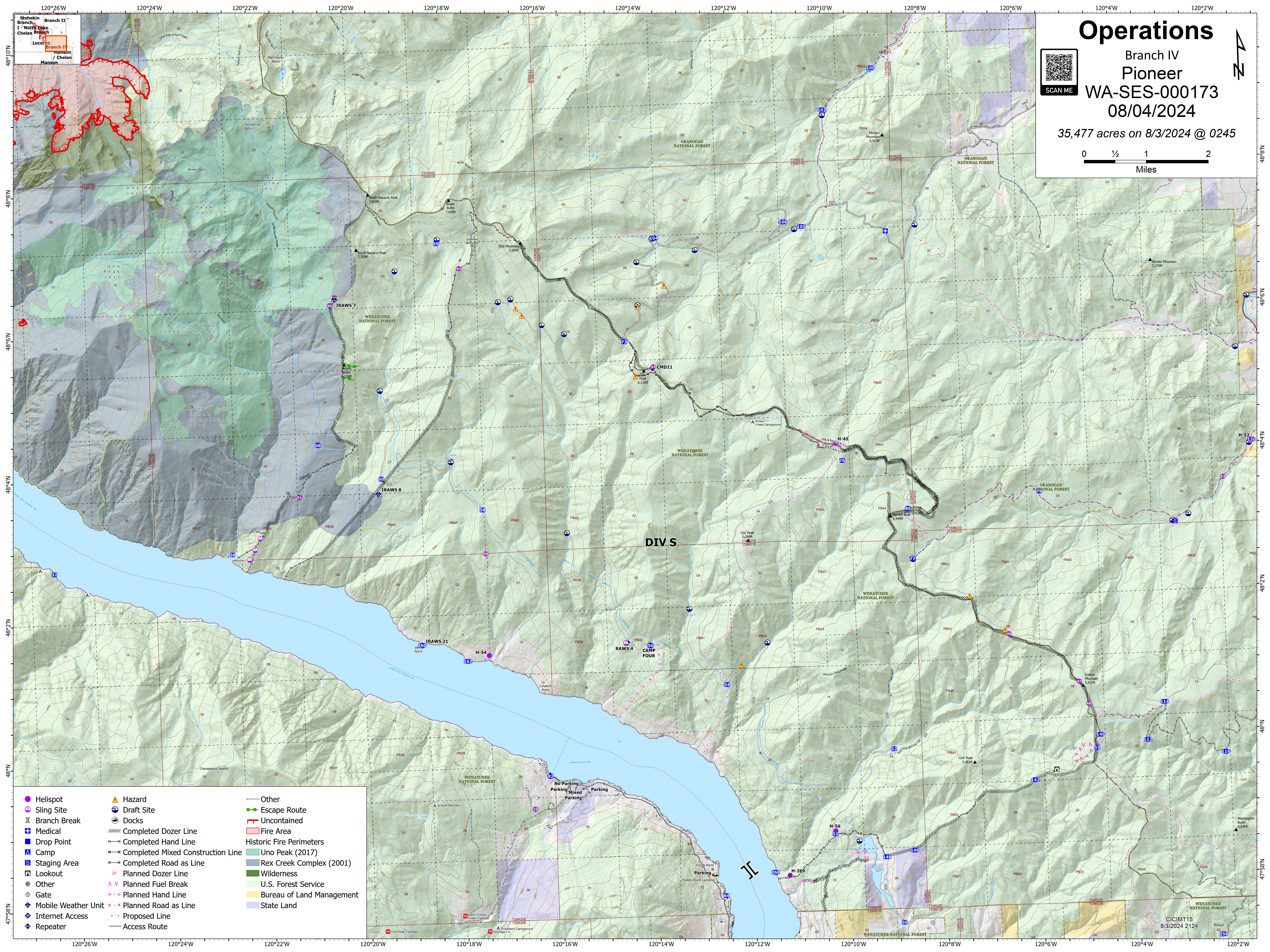
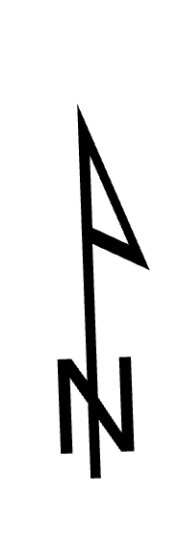
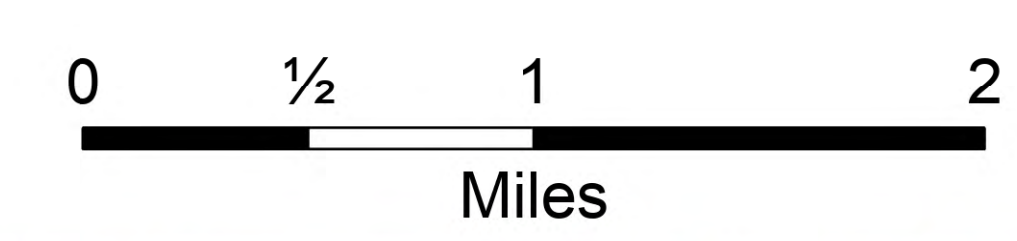


# Operations

Branch IV  
Pioneer  
WA-SES-000173  
08/04/2024

35,477 acres on 8/3/2024 @ 0245



Stehekin Branch II  
North Lake  
Chelan Branch I  
Lucerne  
Branch III  
Manson  
Chelan

- |  |   |  |
|--|---|--|
| <ul style="list-style-type: none"><li>● Helispot</li><li>○ Sling Site</li><li>II Branch Break</li><li>⊕ Medical</li><li>⬇ Drop Point</li><li>Ⓜ Camp</li><li>Ⓜ Staging Area</li><li>👁 Lookout</li><li>● Other</li><li>Ⓜ Gate</li><li>📶 Mobile Weather Unit</li><li>📶 Internet Access</li><li>📶 Repeater</li></ul> | <ul style="list-style-type: none"><li>⚠ Hazard</li><li>Ⓜ Draft Site</li><li>Ⓜ Docks</li><li>Ⓜ Completed Dozer Line</li><li>Ⓜ Completed Hand Line</li><li>Ⓜ Completed Mixed Construction Line</li><li>Ⓜ Completed Road as Line</li><li>Ⓜ Planned Dozer Line</li><li>Ⓜ Planned Fuel Break</li><li>Ⓜ Planned Hand Line</li><li>Ⓜ Planned Road as Line</li><li>Ⓜ Proposed Line</li><li>Ⓜ Access Route</li></ul> | <ul style="list-style-type: none"><li>Ⓜ Other</li><li>Ⓜ Escape Route</li><li>Ⓜ Uncontained</li><li>Ⓜ Fire Area</li><li>Ⓜ Historic Fire Perimeters</li><li>Ⓜ Uno Peak (2017)</li><li>Ⓜ Rex Creek Complex (2001)</li><li>Ⓜ Wilderness</li><li>Ⓜ U.S. Forest Service</li><li>Ⓜ Bureau of Land Management</li><li>Ⓜ State Land</li></ul> |
|--|---|--|