

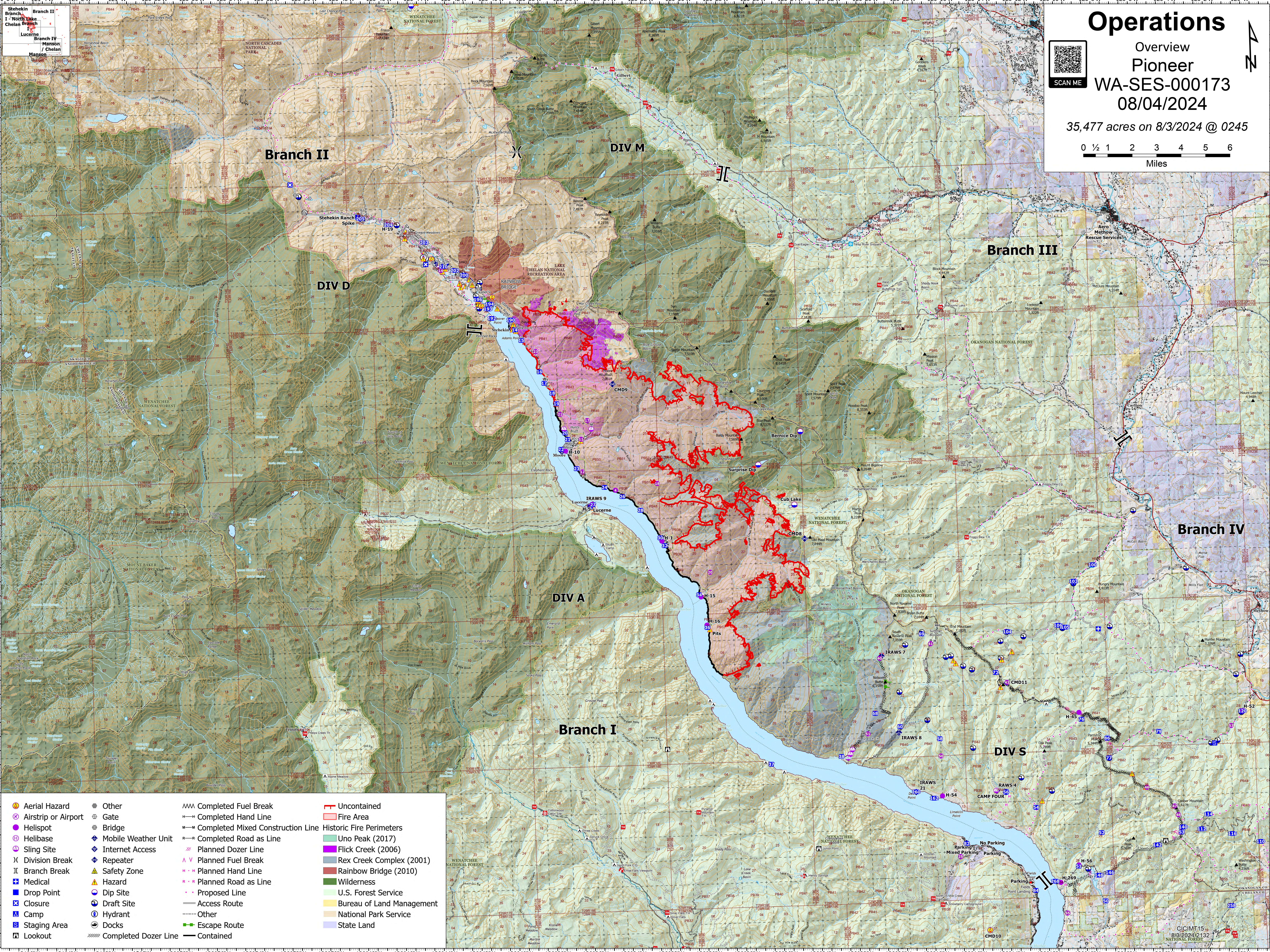
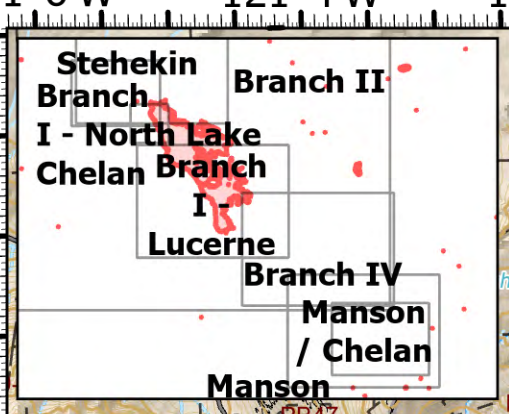
# Operations

Overview  
Pioneer  
WA-SES-000173  
08/04/2024



35,477 acres on 8/3/2024 @ 0245

0 1/2 1 2 3 4 5 6  
Miles



- |                     |                      |                                   |                           |
|---------------------|----------------------|-----------------------------------|---------------------------|
| Aerial Hazard       | Other                | Completed Fuel Break              | Uncontained               |
| Airstrip or Airport | Gate                 | Completed Hand Line               | Fire Area                 |
| Helispot            | Bridge               | Completed Mixed Construction Line | Historic Fire Perimeters  |
| Helibase            | Mobile Weather Unit  | Completed Road as Line            | Uno Peak (2017)           |
| Sling Site          | Internet Access      | Planned Dozer Line                | Flick Creek (2006)        |
| Division Break      | Repeater             | Planned Fuel Break                | Rex Creek Complex (2001)  |
| Branch Break        | Hazard               | Planned Hand Line                 | Rainbow Bridge (2010)     |
| Medical             | Dip Site             | Planned Road as Line              | Wilderness                |
| Drop Point          | Camp                 | Proposed Line                     | U.S. Forest Service       |
| Closure             | Docks                | Access Route                      | Bureau of Land Management |
| Staging Area        | Hydrant              | Other                             | National Park Service     |
| Lookout             | Completed Dozer Line | Contained                         | State Land                |

8/3/2024 12:13Z  
CICIM15