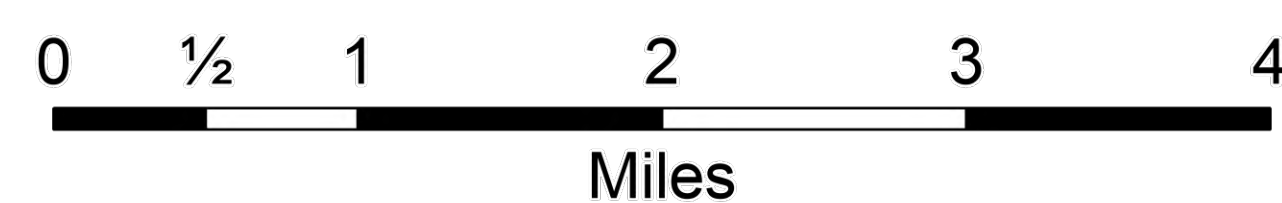
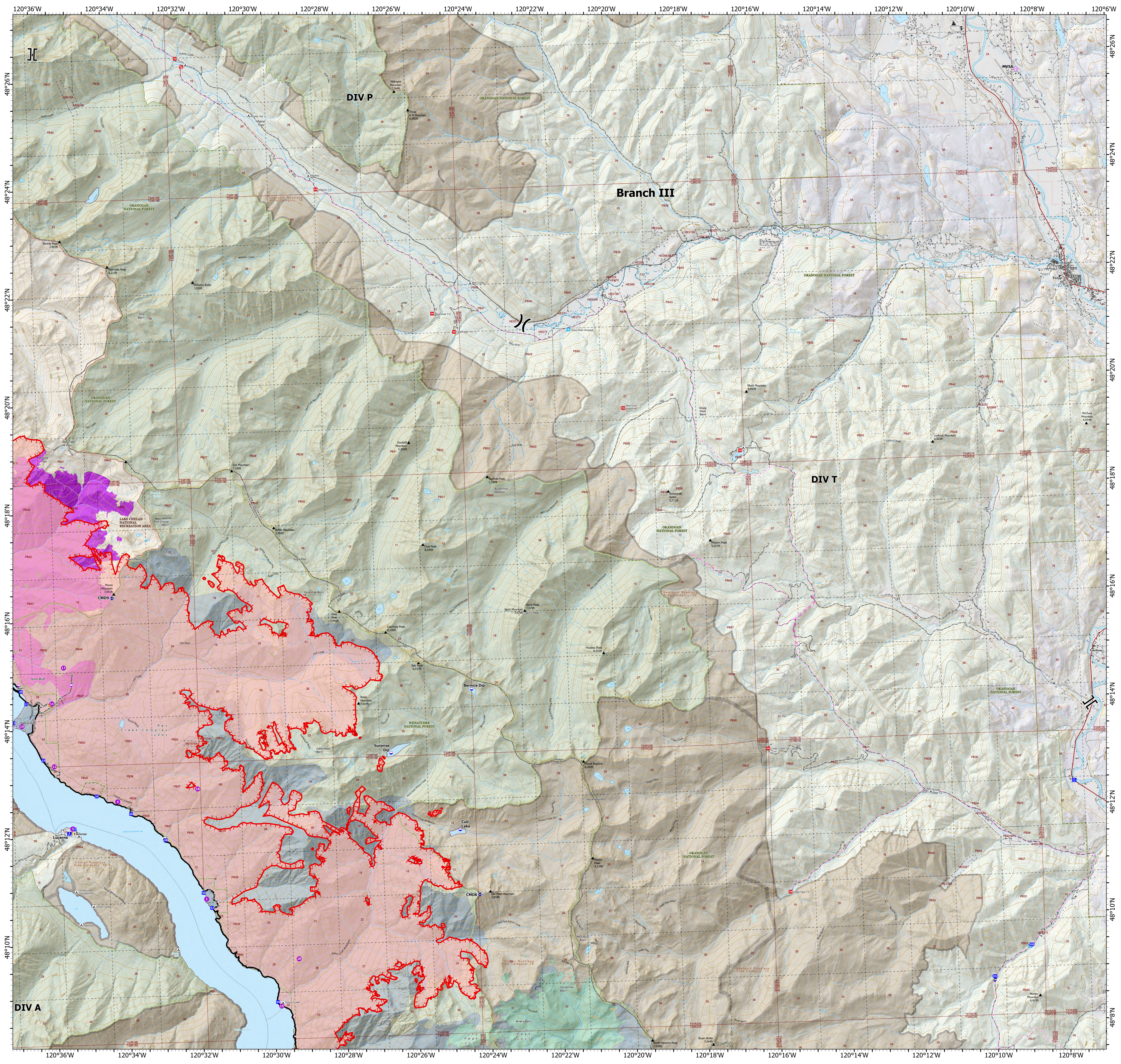


Operations

Branch III
Pioneer
WA-SES-000173
08/08/2024

36,970 acres on 8/6/2024 @ 22:25

- Helispot
- ⊕ Helibase
- ⊕ Sling Site
- ⌘ Division Break
- ⌘ Branch Break
- Drop Point
- ⊠ Camp
- ⊠ Staging Area
- ⊠ Mobile Weather Unit
- ⊠ Repeater
- ⚠ Hazard
- ⊕ Dip Site
- ⊕ Draft Site
- ⊠ Other Property
- ⊠ Pump
- Completed Hand Line
- Completed Mixed Construction Line
- Completed Road as Line
- ×× Planned Dozer Line
- · · Planned Hand Line
- · · Proposed Line
- Contained
- Uncontained
- Fire Area
- Historic Fire Perimeters
 - Uno Peak (2017)
 - Flick Creek (2006)
 - Rex Creek Complex (2001)
- Wilderness
- Roadless Area
- U.S. Forest Service
- Bureau of Land Management
- National Park Service
- State Land



1:40,000 | CICIMT15 | 8/7/2024 2047
Remote Sensing
North American 1983 Datum, Lat/Long Grid