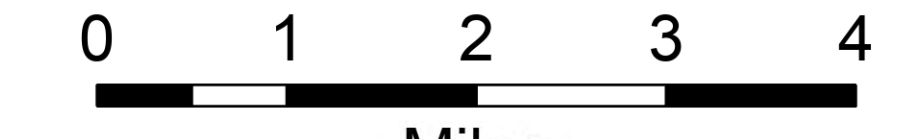


# Transportation Map

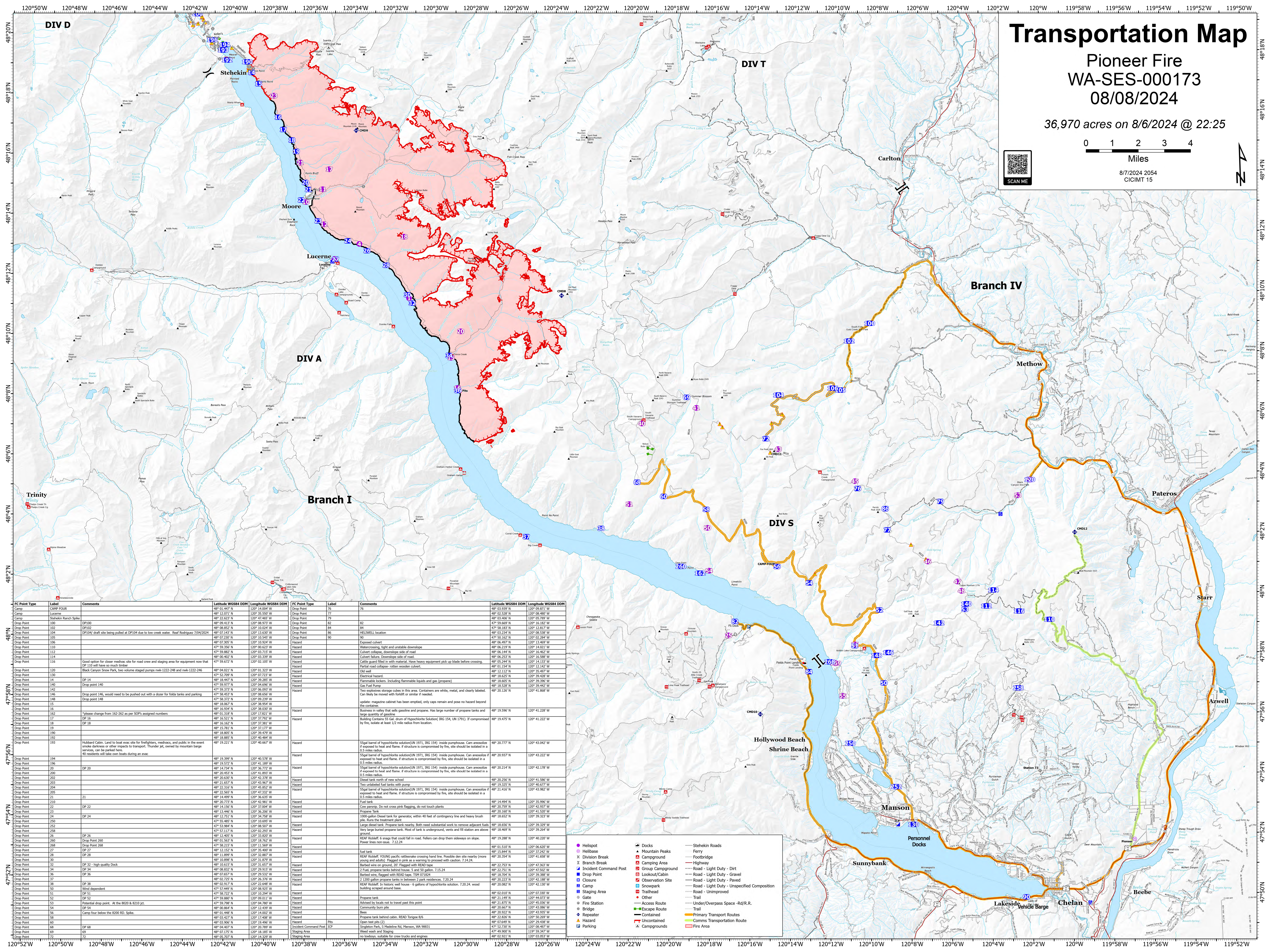
Pioneer Fire  
WA-SES-000173  
08/08/2024

36,970 acres on 8/6/2024 @ 22:25



Miles

8/7/2024 2054  
CICIMT 15



IC Point Type	Label	Comments	Latitude WGS84 DDM	Longitude WGS84 DDM	IC Point Type	Label	Comments	Latitude WGS84 DDM	Longitude WGS84 DDM
Camp	CAMP FOUR		48° 01.447' N	120° 14.007' W	Drop Point	76		48° 03.937' N	120° 09.871' W
Camp	Lucerne		48° 12.071' N	120° 35.550' W	Drop Point	77		48° 02.528' N	120° 08.480' W
Camp	Stehekin Ranch Spike		48° 22.827' N	120° 49.465' W	Drop Point	79		48° 03.480' N	120° 05.780' W
Drop Point	100	DP100	48° 09.413' N	120° 08.973' W	Drop Point	82		47° 59.669' N	120° 16.182' W
Drop Point	102	DP102	48° 08.852' N	120° 10.024' W	Drop Point	84		47° 58.183' N	120° 12.817' W
Drop Point	104	DP104	48° 07.148' N	120° 13.520' W	Drop Point	86	HELMEL location	48° 03.234' N	120° 06.528' W
Drop Point	105	DP105	48° 07.230' N	120° 10.945' W	Drop Point	90		47° 50.162' N	120° 02.288' W
Drop Point	106		48° 07.305' N	120° 10.924' W	Hazard		Exposed culvert	48° 06.497' N	120° 13.469' W
Drop Point	110		47° 59.256' N	120° 09.623' W	Hazard		Watercrossing, light and unstable downlope	48° 06.219' N	120° 14.021' W
Drop Point	112		47° 59.882' N	120° 13.520' W	Hazard		Culvert collapse, downslope side of road	48° 06.144' N	120° 16.442' W
Drop Point	114		48° 00.402' N	120° 03.339' W	Hazard		Culvert failure, downslope side of road	48° 06.253' N	120° 16.588' W
Drop Point	116	Good option for closer medic area for road crew and staging area for equipment now that DP 110 will have too much timber	47° 59.672' N	120° 02.105' W	Hazard		Cattle guard filled in with material. Have heavy equipment pick up blade before crossing	48° 05.244' N	120° 14.133' W
Drop Point	120		48° 04.021' N	120° 01.323' W	Hazard		Partial road collapse, rotten wooden culvert	48° 01.154' N	120° 12.142' W
Drop Point	130	Black Canyon Snow Park, two volume staged pumps rack-1222-248 and rack-1222-246	47° 52.269' N	120° 07.723' W	Hazard		Old well	48° 12.112' N	120° 35.497' W
Drop Point	140	DP 14	48° 18.447' N	120° 39.285' W	Hazard		Electrical hazard	48° 18.625' N	120° 39.428' W
Drop Point	142	Drop point 140	47° 59.977' N	120° 04.696' W	Hazard		Flammable liquids, including flammable liquids and gas (propane)	48° 18.652' N	120° 39.428' W
Drop Point	146	Drop point 146, would need to be pushed out with a dozer for folds tanks and parking	47° 58.453' N	120° 08.656' W	Hazard		Gas Fuel Pump	48° 18.528' N	120° 39.442' W
Drop Point	148	Drop point 148	47° 59.373' N	120° 08.656' W	Hazard		Two explosives storage cubes in this area. Containers are white, metal, and clearly labeled. Can likely be moved with forklift or similar if needed.	48° 20.126' N	120° 41.868' W
Drop Point	15		47° 58.372' N	120° 09.239' W	Hazard		update: magazine cabinet has been emptied, only caps remain and pose no hazard beyond the container.		
Drop Point	18		48° 18.667' N	120° 36.954' W	Hazard		Business in valley that sells gasoline and propane. Has large number of propane tanks and large quantity of gasoline.		
Drop Point	18		48° 18.934' N	120° 38.030' W	Hazard		Building Contains 55 Gal. drums of Hypochlorite Solution(UN 1791, IBC 154, UN 1791). If compromised by fire, isolate at least 1/2 mile radius from location.	48° 19.596' N	120° 41.228' W
Drop Point	162	*please change from 162-262 as per SOP's assigned numbers	48° 01.318' N	120° 17.821' W	Hazard			48° 19.475' N	120° 41.222' W
Drop Point	17	DP 16	48° 16.521' N	120° 37.792' W	Hazard				
Drop Point	18	DP 18	48° 16.182' N	120° 39.381' W	Hazard				
Drop Point	19		48° 15.781' N	120° 37.177' W	Hazard				
Drop Point	190		48° 18.805' N	120° 39.479' W	Hazard				
Drop Point	192		48° 18.885' N	120° 40.485' W	Hazard				
Drop Point	193	Hubbard Cabin. Land to boat exc. site for firefighters, medivac, and public in the event of a fire or other aspects to transport. Thunder jet, owned by mountain barge services, can be parked here. 40 residents will take own boats during an exc.	48° 19.221' N	120° 40.667' W	Hazard				
Drop Point	194		48° 19.399' N	120° 40.578' W	Hazard				
Drop Point	196		48° 19.572' N	120° 41.189' W	Hazard				
Drop Point	20	DP 20	48° 14.734' N	120° 36.772' W	Hazard				
Drop Point	200		48° 20.873' N	120° 34.859' W	Hazard				
Drop Point	202	DP 202	48° 20.638' N	120° 42.378' W	Hazard				
Drop Point	203		48° 21.657' N	120° 43.967' W	Hazard				
Drop Point	204		48° 22.316' N	120° 45.852' W	Hazard				
Drop Point	205		48° 22.565' N	120° 47.432' W	Hazard				
Drop Point	21	21	48° 14.499' N	120° 36.635' W	Hazard				
Drop Point	210		48° 20.717' N	120° 42.981' W	Hazard				
Drop Point	22	DP 22	48° 14.156' N	120° 37.004' W	Hazard				
Drop Point	23		48° 13.446' N	120° 36.206' W	Hazard				
Drop Point	24	DP 24	48° 12.513' N	120° 34.785' W	Hazard				
Drop Point	25		47° 55.480' N	120° 10.695' W	Hazard				
Drop Point	252		47° 53.984' N	120° 08.507' W	Hazard				
Drop Point	258		47° 51.174' N	120° 02.253' W	Hazard				
Drop Point	26	DP 26	48° 12.405' N	120° 33.807' W	Hazard				
Drop Point	260	Drop Point 260	48° 01.563' N	120° 18.762' W	Hazard				
Drop Point	266		47° 58.515' N	120° 15.569' W	Hazard				
Drop Point	27	DP 27	48° 12.152' N	120° 35.400' W	Hazard				
Drop Point	28	DP 28	48° 11.889' N	120° 32.887' W	Hazard				
Drop Point	30		48° 10.886' N	120° 31.879' W	Hazard				
Drop Point	32		48° 10.619' N	120° 31.057' W	Hazard				
Drop Point	34	DP 34 - high quality dock	48° 11.899' N	120° 29.915' W	Hazard				
Drop Point	36	DP 36	48° 07.577' N	120° 29.532' W	Hazard				
Drop Point	37		48° 02.752' N	120° 26.376' W	Hazard				
Drop Point	38	DP 38	48° 02.517' N	120° 27.648' W	Hazard				
Drop Point	51	Wire dependent	47° 57.446' N	120° 08.925' W	Hazard				
Drop Point	52		47° 58.712' N	120° 15.244' W	Hazard				
Drop Point	53	Potential drop point. At the 8020 & 8210 rd.	47° 59.880' N	120° 09.011' W	Hazard				
Drop Point	54	DP 54	47° 59.298' N	120° 04.780' W	Hazard				
Drop Point	56	Camp four below the 8200 RD. Spike.	48° 03.864' N	120° 14.490' W	Hazard				
Drop Point	58		48° 01.448' N	120° 14.002' W	Hazard				
Drop Point	60		48° 03.427' N	120° 17.408' W	Hazard				
Drop Point	62		48° 03.906' N	120° 19.496' W	Hazard				
Drop Point	66	DP 66	48° 04.407' N	120° 20.789' W	Hazard				
Drop Point	68	DP 68	48° 07.175' N	120° 18.185' W	Hazard				
Drop Point	72		48° 05.207' N	120° 14.322' W	Hazard				

IC Point Type	Label	Comments	Latitude WGS84 DDM	Longitude WGS84 DDM
Drop Point	76		48° 03.937' N	120° 09.871' W
Drop Point	77		48° 02.528' N	120° 08.480' W
Drop Point	79		48° 03.480' N	120° 05.780' W
Drop Point	82		47° 59.669' N	120° 16.182' W
Drop Point	84		47° 58.183' N	120° 12.817' W
Drop Point	86	HELMEL location	48° 03.234' N	120° 06.528' W
Drop Point	90		47° 50.162' N	120° 02.288' W
Hazard		Exposed culvert	48° 06.497' N	120° 13.469' W
Hazard		Watercrossing, light and unstable downlope	48° 06.219' N	120° 14.021' W
Hazard		Culvert collapse, downslope side of road	48° 06.144' N	120° 16.442' W
Hazard		Culvert failure, downslope side of road	48° 06.253' N	120° 16.588' W
Hazard		Cattle guard filled in with material. Have heavy equipment pick up blade before crossing	48° 05.244' N	120° 14.133' W
Hazard		Partial road collapse, rotten wooden culvert	48° 01.154' N	120° 12.142' W
Hazard		Old well	48° 12.112' N	120° 35.497' W
Hazard		Electrical hazard	48° 18.625' N	120° 39.428' W
Hazard		Flammable liquids, including flammable liquids and gas (propane)	48° 18.652' N	120° 39.428' W
Hazard		Gas Fuel Pump	48° 18.528' N	120° 39.442' W
Hazard		Two explosives storage cubes in this area. Containers are white, metal, and clearly labeled. Can likely be moved with forklift or similar if needed.	48° 20.126' N	120° 41.868' W
Hazard		update: magazine cabinet has been emptied, only caps remain and pose no hazard beyond the container.		
Hazard		Business in valley that sells gasoline and propane. Has large number of propane tanks and large quantity of gasoline.	48° 19.596' N	120° 41.228' W
Hazard		Building Contains 55 Gal. drums of Hypochlorite Solution(UN 1791, IBC 154, UN 1791). If compromised by fire, isolate at least 1/2 mile radius from location.	48° 19.475' N	120° 41.222' W
Hazard		55gal barrel of hypochlorite solution(UN 1791, IBC 154) inside pumphouse. Can aerosolize if exposed to heat and flame. If structure is compromised by fire, site should be isolated in a 0.5 miles radius.	48° 20.777' N	120° 43.042' W
Hazard		55gal barrel of hypochlorite solution(UN 1791, IBC 154) inside pumphouse. Can aerosolize if exposed to heat and flame. If structure is compromised by fire, site should be isolated in a 0.5 miles radius.	48° 20.937' N	120° 43.222' W
Hazard		55gal barrel of hypochlorite solution(UN 1791, IBC 154) inside pumphouse. Can aerosolize if exposed to heat and flame. If structure is compromised by fire, site should be isolated in a 0.5 miles radius.	48° 20.214' N	120° 42.178' W
Hazard		Diesel tank north of new school	48° 20.256' N	120° 41.586' W
Hazard		Two unlabelled fuel tanks with pump	48° 19.325' N	120° 40.677' W
Hazard		55gal barrel of hypochlorite solution(UN 1791, IBC 154) inside pumphouse. Can aerosolize if exposed to heat and flame. If structure is compromised by fire, site should be isolated in a 0.5 miles radius.	48° 21.418' N	120° 43.982' W
Hazard		Fuel tank	48° 14.494' N	120° 35.996' W
Hazard		Cow pens. Do not cross pink flagging, do not touch plants	48° 20.759' N	120° 42.937' W
Hazard		Propane tank	48° 20.160' N	120° 41.520' W
Hazard		1000 gallon Diesel tank for generator, within 40 feet of contingency line and heavy brush pile. Runs the treatment plant	48° 18.652' N	120° 39.322' W
Hazard		Large diesel tank. Propane tank nearby. Both need substantial work to remove adjacent fuels	48° 18.658' N	120° 39.322' W
Hazard		New large barrel propane tank. Most of tank is underground, vents and fill station are above ground.	48° 18.469' N	120° 39.268' W
Hazard		REAR Rickfill. 6 tanks that could fall in road. Rollers can drop them sideways on slope. Power lines run issue. 7.12.24	48° 19.280' N	120° 40.220' W
Hazard		Fuel tank	48° 01.510' N	120° 05.620' W
Hazard		REAR Rickfill. YOUNG Pacific, rafterless crossing hand line. Possible den site nearby (crows young and adults). Flagged in pink as a warning to proceed with caution. 7.14.24	48° 20.354' N	120° 41.658' W
Hazard		Barbed wire on ground, 20' flagged with RED tape	48° 22.753' N	120° 31.363' W
Hazard		2 Fuel, propane tanks behind house, 5 and 50 gallon. 7.15.24	48° 22.751' N	120° 47.502' W
Hazard		Barbed wire, flagged with RED tape. 134.07.24	48° 18.204' N	120° 43.388' W
Hazard		2 1200 gallon propane tanks in between 2 peak residences. 7.20.24	48° 20.222' N	120° 41.888' W
Hazard		REAR Rickfill. In historic well house - 6 gallons of hypochlorite solution. 7.20.24, wood building occupied around house.	48° 20.082' N	120° 41.130' W
Hazard		Propane tank	48° 02.010' N	120° 07.330' W
Hazard		Advised by locals not to travel past this point.	48° 21.149' N	120° 44.073' W
Hazard		Comments: Burn pile	48° 21.875' N	120° 45.030' W
Hazard		Bees	48° 20.667' N	120° 43.088' W
Hazard		Propane tank behind cabin. READ Torque 8/6	48° 20.922' N	120° 43.935' W
Hazard		Open tent pile (?)	48° 22.826' N	120° 42.289' W
Hazard		Singleton Park, S Madeline Rd, Moran, WA 98831	48° 03.649' N	120° 43.849' W
Hazard		Went worth and Staging	47° 52.730' N	120° 08.480' W
Hazard		no bodies, suitable for crew trucks and engines	48° 49.900' N	119° 59.340' W

- Helicopter
- Helibase
- Division Break
- Branch Break
- Incident Command Post
- Drop Point
- Closure
- Observation Site
- Camp
- Staging Area
- Gate
- Fire Station
- Bridge
- Repeater
- Parking
- Docks
- Mountain Peaks
- Ferry
- Footbridge
- Camping Area
- Group Campground
- Lookout/Cabin
- Closure
- Observation Site
- Snowpack
- Trailhead
- Other
- Access Route
- Escape Route
- Contaminated
- Uncontaminated
- Campgrounds
- Stehekin Roads
- Highway
- Road - Light Duty - Dirt
- Road - Light Duty - Gravel
- Road - Light Duty - Paved
- Road - Light Duty - Unspecified Composition
- Road - Unimproved
- Trail
- Under/Overpass Space -Rd/R.R.
- Primary Transport Routes
- Commons Transportation Route
- Fire Area