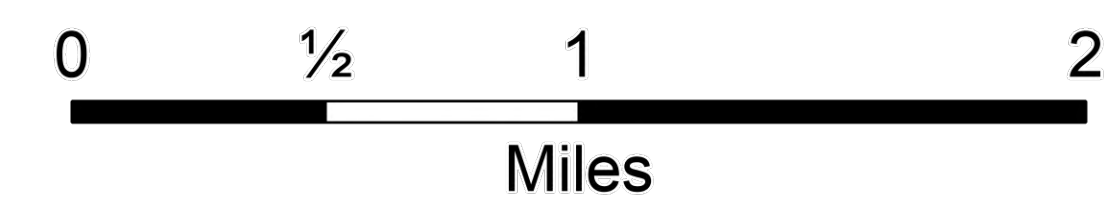
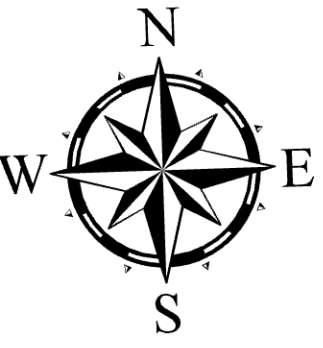
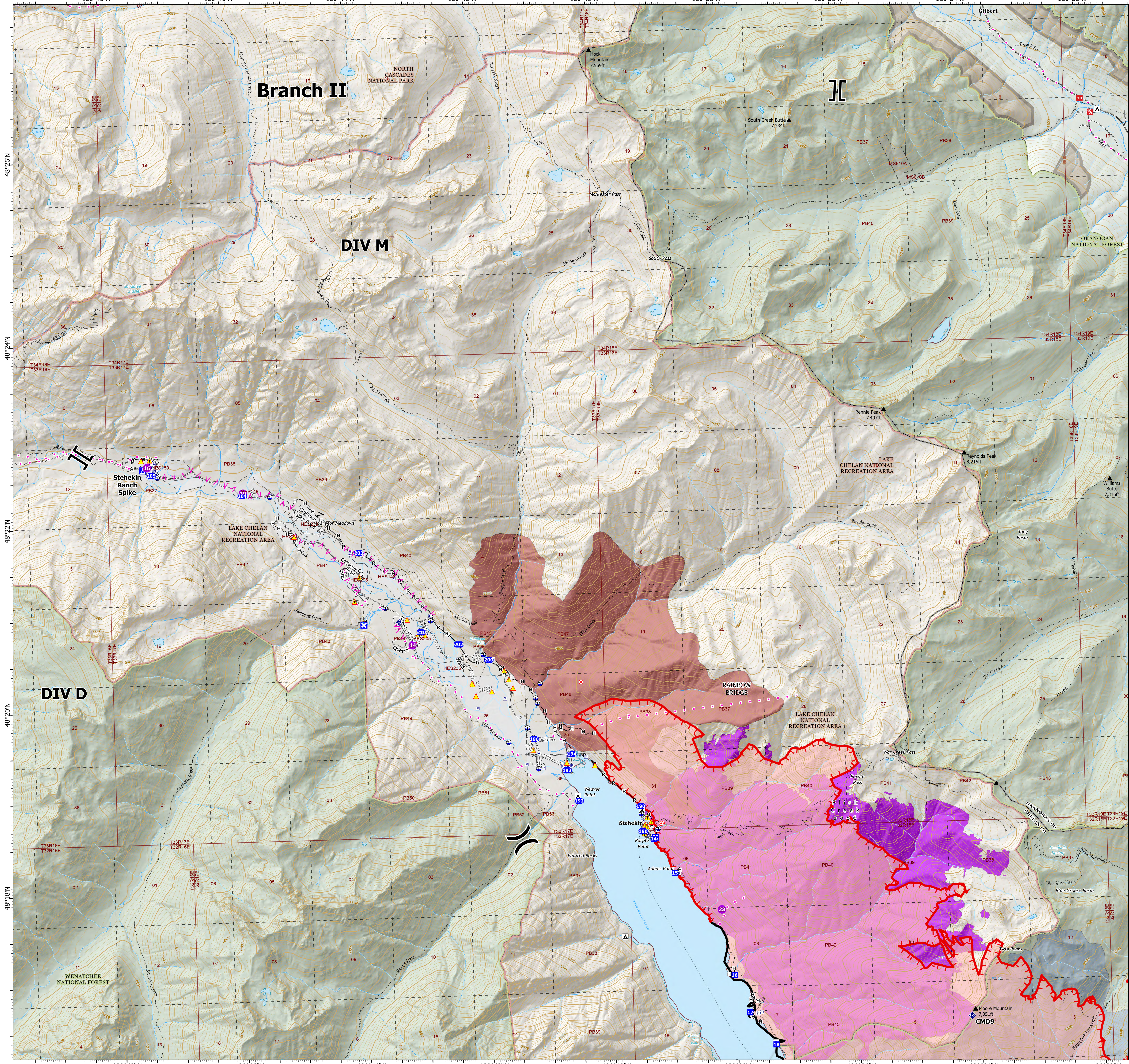


# Operations

Branch II  
Pioneer  
WA-SES-000173  
08/09/2024

37,515 acres on 8/8/2024 @ 20:00

- Helispot
- X Division Break
- II Branch Break
- Drop Point
- ⊠ Closure
- ⛑ Camp
- 🔥 Hot Spot - Spot Fire
- 📶 Mobile Weather Unit
- 📡 Repeater
- ⚠ Hazard
- 🚧 Draft Site
- 🏠 Other Property
- 🚰 Pump
- 🛢 Water Tank
- Completed Fuel Break
- Completed Hand Line
- Completed Mixed Construction Line
- Completed Road as Line
- Planned Fuel Break
- Planned Road as Line
- Proposed Line
- Contained
- Uncontained
- 🔴 Fire Area
- Historic Fire Perimeters
  - 🟡 Flick Creek (2006)
  - 🟠 Rex Creek Complex (2001)
  - 🟢 Rainbow Bridge (2010)
- 🌲 Wilderness
- 🚫 Roadless Area
- 🌲 U.S. Forest Service
- 🌲 Bureau of Land Management
- 🌲 National Park Service



1:24,000 | CICIMT15 | 8/8/2024 2155  
Remote Sensing  
North American 1983 Datum, Lat/Long Grid