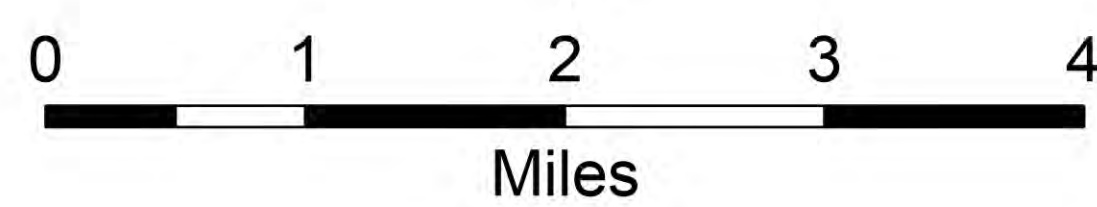
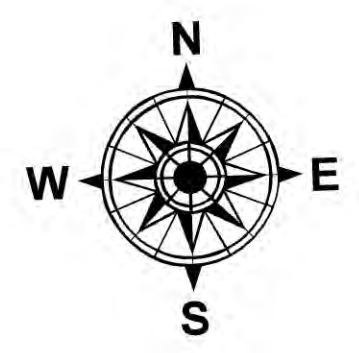


Progression

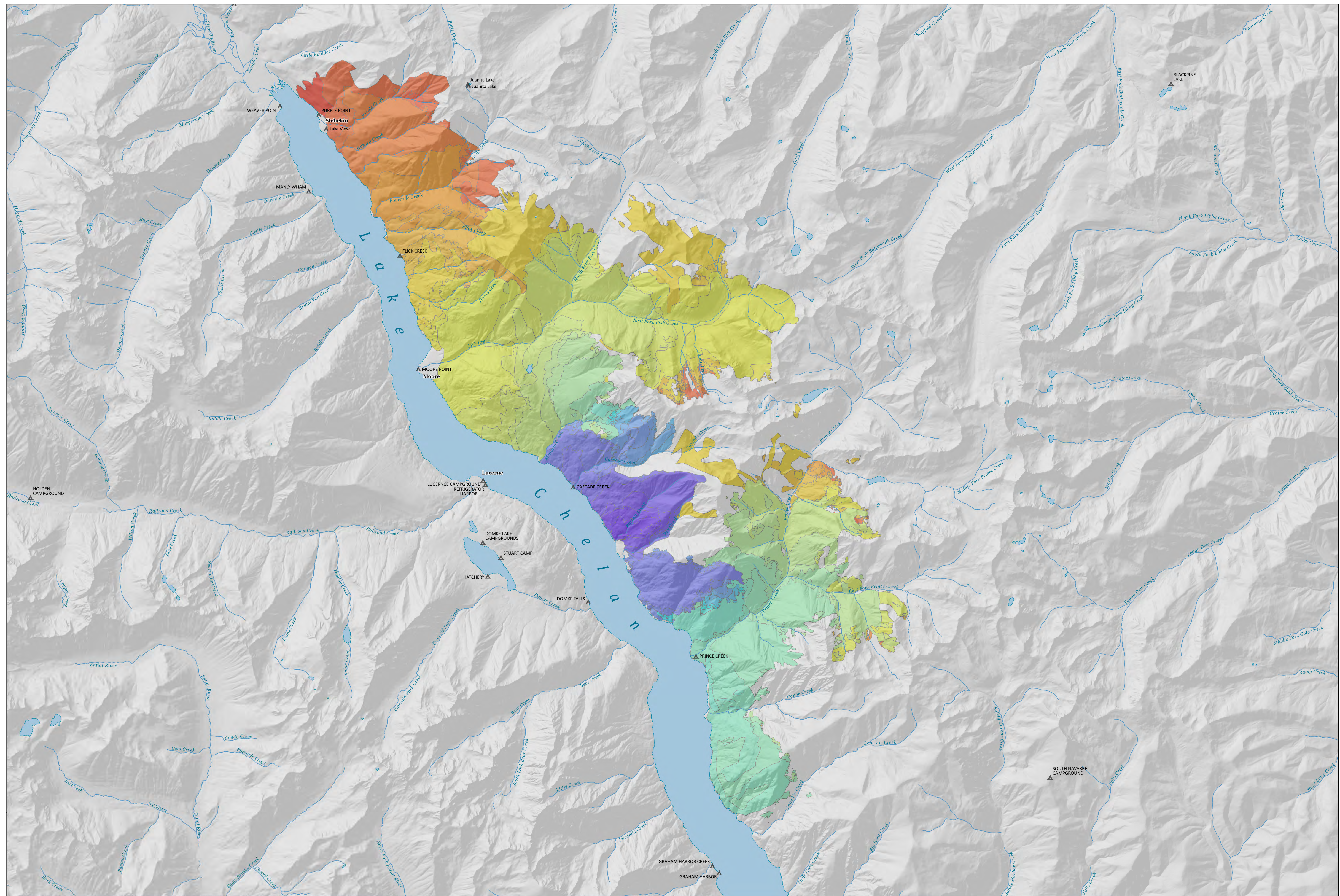
Pioneer
WA-SES-000173
08/09/2024

37,515 acres at 8/8/2024 @ 20:00

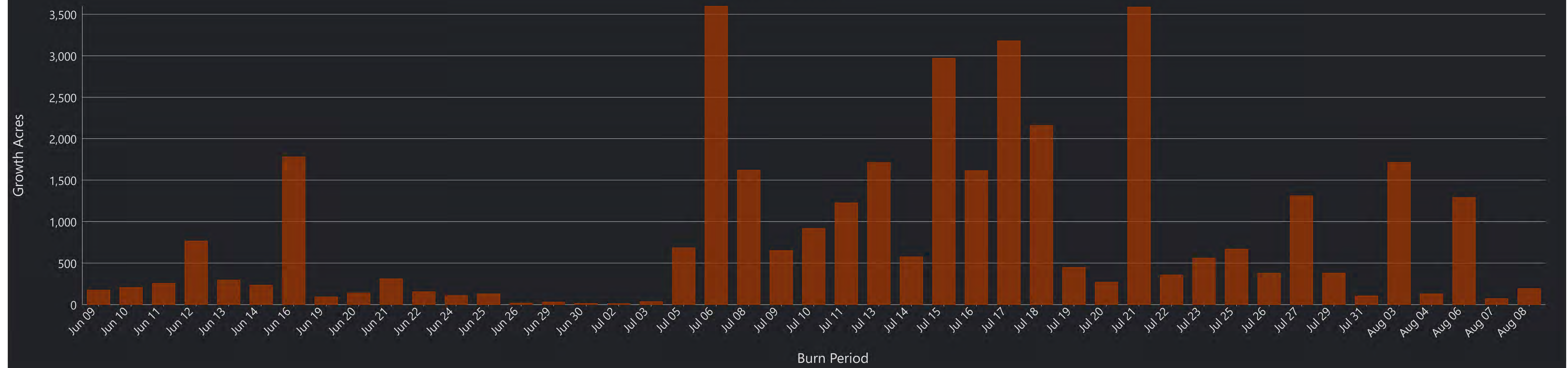
20240609 @ 1551	174ac	+174ac
20240610 @ 1553	382ac	+208ac
20240611 @ 1542	640ac	+258ac
20240612 @ 1259	1,407ac	+767ac
20240613 @ 1147	1,703ac	+296ac
20240614 @ 0030	1,938ac	+235ac
20240616 @ 0130	3,357ac	+1,419ac
20240616 @ 2100	3,717ac	+360ac
20240619 @ 0015	3,810ac	+93ac
20240620 @ 0145	3,950ac	+140ac
20240621 @ 0145	4,262ac	+312ac
20240622 @ 0115	4,418ac	+156ac
20240624 @ 0245	4,529ac	+111ac
20240625 @ 0200	4,605ac	+76ac
20240625 @ 2232	4,659ac	+54ac
20240626 @ 2242	4,677ac	+18ac
20240629 @ 0030	4,709ac	+32ac
20240630 @ 2139	4,724ac	+15ac
20240702 @ 0300	4,736ac	+12ac
20240703 @ 0030	4,762ac	+26ac
20240703 @ 2200	4,772ac	+10ac
20240705 @ 0100	5,458ac	+686ac
20240706 @ 0100	7,180ac	+1,722ac
20240706 @ 2121	9,055ac	+1,875ac
20240708 @ 0038	10,262ac	+1,207ac
20240708 @ 2059	10,677ac	+415ac
20240709 @ 1000	11,329ac	+652ac
20240710 @ 0015	12,247ac	+918ac
20240711 @ 0045	13,474ac	+1,227ac
20240713 @ 0653	13,617ac	+143ac
20240713 @ 1425	15,185ac	+1,568ac
20240714 @ 0030	15,761ac	+576ac
20240715 @ 0100	18,731ac	+2,970ac
20240716 @ 0100	20,348ac	+1,617ac
20240717 @ 0130	23,529ac	+3,181ac
20240718 @ 0200	25,688ac	+2,159ac
20240719 @ 0115	26,137ac	+449ac
20240720 @ 0315	26,407ac	+270ac
20240721 @ 0415	29,994ac	+3,587ac
20240722 @ 0215	30,351ac	+357ac
20240723 @ 0245	30,666ac	+315ac
20240723 @ 2145	30,913ac	+247ac
20240725 @ 0400	31,583ac	+670ac
20240726 @ 0100	31,905ac	+322ac
20240726 @ 2035	31,963ac	+58ac
20240727 @ 1945	33,275ac	+1,312ac
20240729 @ 1202	33,656ac	+381ac
20240731 @ 0145	33,761ac	+105ac
20240803 @ 1554	35,475ac	+1,714ac
20240804 @ 0930	35,607ac	+132ac
20240806 @ 0711	36,898ac	+1,291ac
20240807 @ 0732	36,970ac	+72ac
20240808 @ 0648	37,164ac	+194ac



1:46,875 | CICIMT 15 | 8/8/2024 2150
Remote Sensing
North American 1983 Datum, Lat/Long Grid



Fire Progression



Burn Period