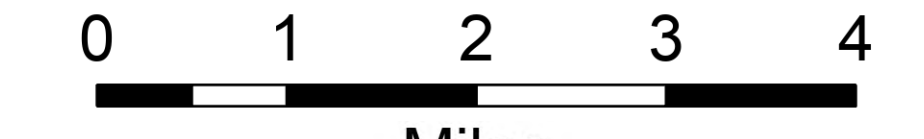


Transportation Map

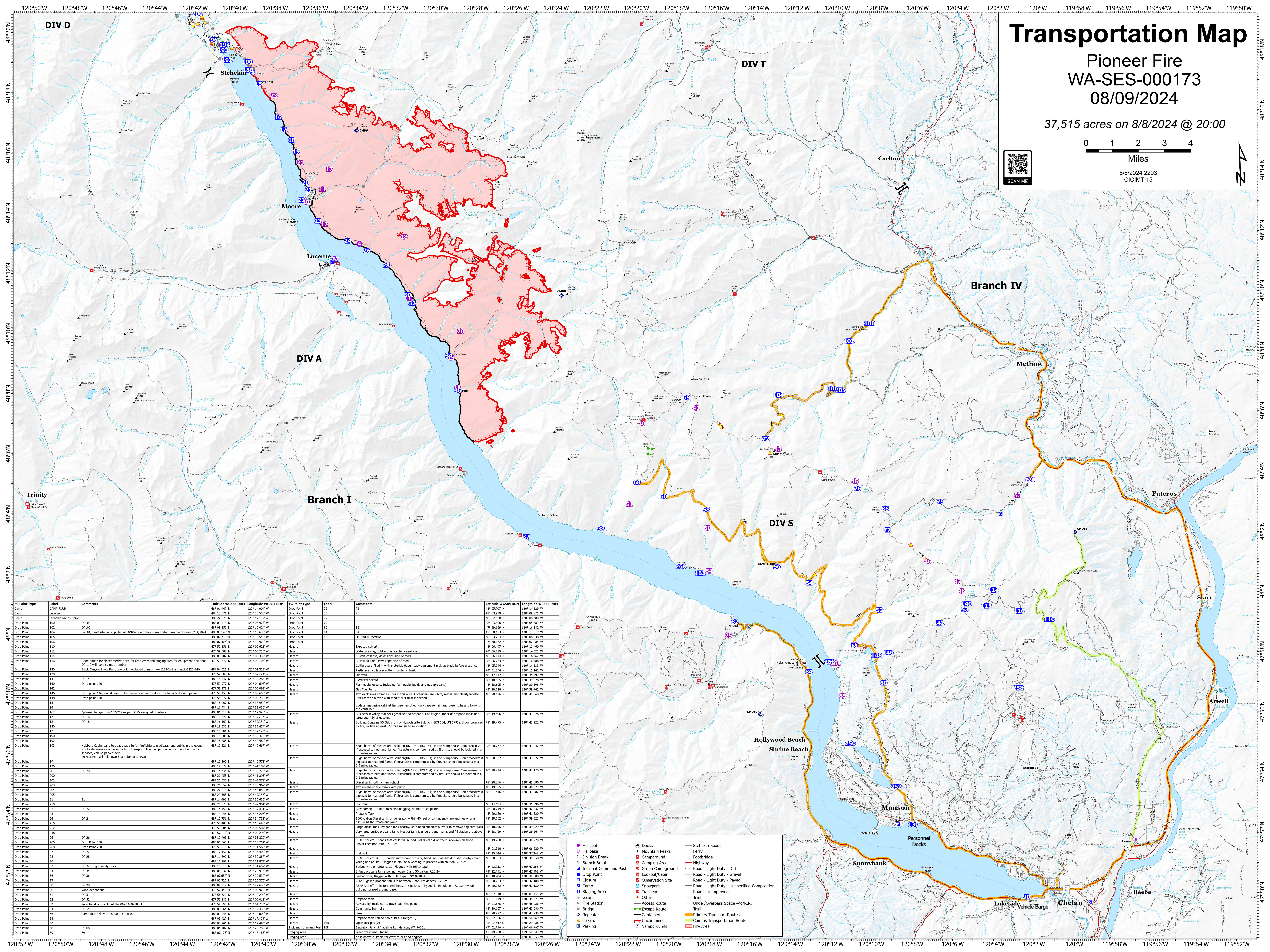
Pioneer Fire
WA-SES-000173
08/09/2024

37,515 acres on 8/8/2024 @ 20:00



Miles

8/8/2024 2203
CICIMT 15



IC Point Type	Label	Comments	Latitude WGS84 DDM	Longitude WGS84 DDM	IC Point Type	Label	Comments	Latitude WGS84 DDM	Longitude WGS84 DDM
Camp	CAMP FOUR		48° 01.447' N	120° 14.004' W	Drop Point	72		48° 05.707' N	120° 14.327' W
Camp	Lucerne		48° 12.071' N	120° 35.550' W	Drop Point	76		48° 03.939' N	120° 09.871' W
Camp	Stehekin Branch Spoke		48° 16.623' N	120° 47.867' W	Drop Point	77		48° 03.528' N	120° 08.460' W
Drop Point	100	DP100	48° 09.413' N	120° 08.773' W	Drop Point	79		48° 03.406' N	120° 05.789' W
Drop Point	102	DP102	48° 08.852' N	120° 10.824' W	Drop Point	82	82	47° 59.669' N	120° 16.182' W
Drop Point	104	DP104 draft site being pulled at DP104 due to low creek water. Reel Rodgers 7/04/2024	48° 07.244' N	120° 13.807' W	Drop Point	84	84	47° 58.183' N	120° 13.817' W
Drop Point	105		48° 07.230' N	120° 10.545' W	Drop Point	86		48° 03.234' N	120° 08.536' W
Drop Point	106		48° 07.395' N	120° 10.824' W	Drop Point	90	90	47° 50.162' N	120° 02.284' W
Drop Point	110		47° 59.356' N	120° 08.823' W	Hazard			48° 06.497' N	120° 13.460' W
Drop Point	112		47° 59.802' N	120° 03.715' W	Hazard			48° 06.219' N	120° 14.021' W
Drop Point	114		48° 00.402' N	120° 03.339' W	Hazard			48° 06.144' N	120° 14.462' W
Drop Point	116	Good option for closer medic site for road crew and staging area for equipment now that DP 110 will have so much timber	47° 59.672' N	120° 02.103' W	Hazard			48° 06.223' N	120° 15.588' W
Drop Point	120		48° 04.021' N	120° 01.323' W	Hazard			48° 05.244' N	120° 11.133' W
Drop Point	130	Black Canyon Snow Park, two volume staged pumps msk-1222-248 and msk-1222-246	47° 52.700' N	120° 02.722' W	Hazard			48° 01.154' N	120° 12.142' W
Drop Point	14	DP 14	48° 18.447' N	120° 39.285' W	Hazard			48° 12.112' N	120° 13.817' W
Drop Point	140	Drop point 140	47° 59.977' N	120° 04.690' W	Hazard			48° 18.625' N	120° 39.426' W
Drop Point	142		47° 59.372' N	120° 06.057' W	Hazard			48° 18.605' N	120° 39.296' W
Drop Point	146	Drop point 146, would need to be pushed out with a dozer for fields tanks and parking	47° 58.453' N	120° 08.656' W	Hazard			48° 18.528' N	120° 39.426' W
Drop Point	148	Drop point 148	47° 58.453' N	120° 08.656' W	Hazard			48° 20.126' N	120° 41.862' W
Drop Point	15		48° 16.934' N	120° 38.030' W	Hazard				
Drop Point	16		48° 01.318' N	120° 17.821' W	Hazard				
Drop Point	162	*please change from 162-262 as per SOP's assigned numbers	48° 16.934' N	120° 38.030' W	Hazard				
Drop Point	18	DP 18	48° 16.162' N	120° 37.381' W	Hazard				
Drop Point	180		48° 18.532' N	120° 39.424' W	Hazard				
Drop Point	182		48° 18.781' N	120° 39.424' W	Hazard				
Drop Point	190		48° 18.800' N	120° 39.479' W	Hazard				
Drop Point	192		48° 18.880' N	120° 40.484' W	Hazard				
Drop Point	193		48° 19.223' N	120° 40.467' W	Hazard				
Drop Point	194	Hubbard Cabin. Land to boat over site for firefighters, medics, and public in the event smoke darkness or other impacts to transport. Thunder jet, owned by mountain barge owners, can be parked here. 40 residents will take own boats during an evac	48° 19.399' N	120° 40.578' W	Hazard				
Drop Point	196		48° 19.522' N	120° 41.109' W	Hazard				
Drop Point	20	DP 20	48° 14.734' N	120° 36.772' W	Hazard				
Drop Point	200		48° 20.453' N	120° 41.893' W	Hazard				
Drop Point	202		48° 20.620' N	120° 42.727' W	Hazard				
Drop Point	203		48° 21.653' N	120° 43.867' W	Hazard				
Drop Point	204		48° 22.316' N	120° 45.852' W	Hazard				
Drop Point	205		48° 22.565' N	120° 42.727' W	Hazard				
Drop Point	21	DP 21	48° 14.499' N	120° 36.635' W	Hazard				
Drop Point	210		48° 20.772' N	120° 42.981' W	Hazard				
Drop Point	22	DP 22	48° 18.156' N	120° 37.004' W	Hazard				
Drop Point	23	DP 23	48° 13.446' N	120° 36.206' W	Hazard				
Drop Point	24	DP 24	48° 12.751' N	120° 34.758' W	Hazard				
Drop Point	250		47° 52.480' N	120° 11.405' W	Hazard				
Drop Point	252		47° 53.984' N	120° 08.507' W	Hazard				
Drop Point	258		47° 57.117' N	120° 02.293' W	Hazard				
Drop Point	26	DP 26	48° 13.400' N	120° 37.124' W	Hazard				
Drop Point	260	Drop Point 260	48° 16.563' N	120° 18.762' W	Hazard				
Drop Point	268	Drop Point 268	48° 20.213' N	120° 11.509' W	Hazard				
Drop Point	27	DP 27	48° 16.152' N	120° 37.400' W	Hazard				
Drop Point	28	DP 28	48° 11.899' N	120° 32.887' W	Hazard				
Drop Point	30		48° 10.898' N	120° 31.879' W	Hazard				
Drop Point	32	DP 32 - high quality Dock	48° 16.615' N	120° 31.827' W	Hazard				
Drop Point	34	DP 34	48° 08.832' N	120° 29.915' W	Hazard				
Drop Point	36	DP 36	48° 07.657' N	120° 29.532' W	Hazard				
Drop Point	37	DP 37	48° 07.722' N	120° 26.776' W	Hazard				
Drop Point	38	DP 38	48° 02.917' N	120° 22.648' W	Hazard				
Drop Point	50	Wind dependent	47° 52.449' N	120° 08.263' W	Hazard				
Drop Point	51	DP 51	47° 58.722' N	120° 08.264' W	Hazard				
Drop Point	52	DP 52	47° 59.860' N	120° 09.011' W	Hazard				
Drop Point	53	Potential drop point. At the 8200 & 8210 pt.	47° 59.798' N	120° 04.780' W	Hazard				
Drop Point	54	DP 54	48° 03.860' N	120° 04.780' W	Hazard				
Drop Point	56	Camp four below the 8200 rd. Spoke.	48° 01.448' N	120° 14.002' W	Hazard				
Drop Point	58		48° 03.427' N	120° 17.486' W	Hazard				
Drop Point	60		48° 03.906' N	120° 18.400' W	Hazard				
Drop Point	68	DP 68	48° 04.402' N	120° 20.789' W	Hazard				
Drop Point	69	DP 69	48° 07.175' N	120° 18.185' W	Hazard				

IC Point Type	Label	Comments	Latitude WGS84 DDM	Longitude WGS84 DDM
Drop Point	72		48° 05.707' N	120° 14.327' W
Drop Point	76		48° 03.939' N	120° 09.871' W
Drop Point	77		48° 03.528' N	120° 08.460' W
Drop Point	79		48° 03.406' N	120° 05.789' W
Drop Point	82	82	47° 59.669' N	120° 16.182' W
Drop Point	84	84	47° 58.183' N	120° 13.817' W
Drop Point	86		48° 03.234' N	120° 08.536' W
Drop Point	90	90	47° 50.162' N	120° 02.284' W
Hazard		Eroded surface, light and unstable downslope	48° 06.497' N	120° 13.460' W
Hazard		Watercourse, light and unstable downslope	48° 06.219' N	120° 14.021' W
Hazard		Culvert collapse, down slope side of road	48° 06.144' N	120° 14.462' W
Hazard		Culvert failure, down slope side of road	48° 06.223' N	120° 15.588' W
Hazard		Cattle guard filled in with material. Have heavy equipment pick up blade before crossing.	48° 05.244' N	120° 11.133' W
Hazard		Partial road collapse - rotten wooden culvert.	48° 01.154' N	120° 12.142' W
Hazard		Old well	48° 12.112' N	120° 13.817' W
Hazard		Electrical hazard.	48° 18.625' N	120° 39.426' W
Hazard		Flammable lockers, including flammable liquids and gas (propane)	48° 18.605' N	120° 39.296' W
Hazard		Gas Fuel Pumps	48° 18.528' N	120° 39.426' W
Hazard		Two explosive storage cubes in this area. Containers are white, metal, and clearly labeled. Can likely be moved with forklift or similar if needed.	48° 20.126' N	120° 41.862' W
Hazard		update: magazine cabinet has been emptied, only caps remain and pose no hazard beyond the container.		
Hazard		Business in valley that sells gasoline and propane. Has large number of propane tanks and large quantity of gasoline.	48° 19.596' N	120° 41.228' W
Hazard		Building Contains 55 Gal. drum of Hypochlorite Solution (BG 154, UN 1793). If compromised by fire, isolate at least 1/2 mile radius from location.	48° 19.475' N	120° 41.222' W
Hazard		55gal barrel of hypochlorite solution(BG 154, UN 1793) inside pumphouse. Can aerosolize if exposed to heat and flame. If structure is compromised by fire, site should be isolated in a 0.5 miles radius.	48° 20.777' N	120° 43.042' W
Hazard		55gal barrel of hypochlorite solution(BG 154, UN 1793) inside pumphouse. Can aerosolize if exposed to heat and flame. If structure is compromised by fire, site should be isolated in a 0.5 miles radius.	48° 20.937' N	120° 43.222' W
Hazard		55gal barrel of hypochlorite solution(BG 154, UN 1793) inside pumphouse. Can aerosolize if exposed to heat and flame. If structure is compromised by fire, site should be isolated in a 0.5 miles radius.	48° 20.214' N	120° 42.126' W
Hazard		55gal barrel of hypochlorite solution(BG 154, UN 1793) inside pumphouse. Can aerosolize if exposed to heat and flame. If structure is compromised by fire, site should be isolated in a 0.5 miles radius.	48° 20.290' N	120° 41.586' W
Hazard		55gal barrel of hypochlorite solution(BG 154, UN 1793) inside pumphouse. Can aerosolize if exposed to heat and flame. If structure is compromised by fire, site should be isolated in a 0.5 miles radius.	48° 19.325' N	120° 40.877' W
Hazard		55gal barrel of hypochlorite solution(BG 154, UN 1793) inside pumphouse. Can aerosolize if exposed to heat and flame. If structure is compromised by fire, site should be isolated in a 0.5 miles radius.	48° 21.416' N	120° 43.862' W
Hazard		55gal barrel of hypochlorite solution(BG 154, UN 1793) inside pumphouse. Can aerosolize if exposed to heat and flame. If structure is compromised by fire, site should be isolated in a 0.5 miles radius.	48° 14.494' N	120° 35.996' W
Hazard		55gal barrel of hypochlorite solution(BG 154, UN 1793) inside pumphouse. Can aerosolize if exposed to heat and flame. If structure is compromised by fire, site should be isolated in a 0.5 miles radius.	48° 20.759' N	120° 41.937' W
Hazard		55gal barrel of hypochlorite solution(BG 154, UN 1793) inside pumphouse. Can aerosolize if exposed to heat and flame. If structure is compromised by fire, site should be isolated in a 0.5 miles radius.	48° 20.354' N	120° 41.608' W
Hazard		55gal barrel of hypochlorite solution(BG 154, UN 1793) inside pumphouse. Can aerosolize if exposed to heat and flame. If structure is compromised by fire, site should be isolated in a 0.5 miles radius.	48° 22.751' N	120° 47.389' W
Hazard		55gal barrel of hypochlorite solution(BG 154, UN 1793) inside pumphouse. Can aerosolize if exposed to heat and flame. If structure is compromised by fire, site should be isolated in a 0.5 miles radius.	48° 22.751' N	120° 47.502' W
Hazard		55gal barrel of hypochlorite solution(BG 154, UN 1793) inside pumphouse. Can aerosolize if exposed to heat and flame. If structure is compromised by fire, site should be isolated in a 0.5 miles radius.	48° 18.784' N	120° 39.386' W
Hazard		55gal barrel of hypochlorite solution(BG 154, UN 1793) inside pumphouse. Can aerosolize if exposed to heat and flame. If structure is compromised by fire, site should be isolated in a 0.5 miles radius.	48° 21.495' N	120° 44.188' W
Hazard		55gal barrel of hypochlorite solution(BG 154, UN 1793) inside pumphouse. Can aerosolize if exposed to heat and flame. If structure is compromised by fire, site should be isolated in a 0.5 miles radius.	48° 22.826' N	120° 50.288' W
Hazard		55gal barrel of hypochlorite solution(BG 154, UN 1793) inside pumphouse. Can aerosolize if exposed to heat and flame. If structure is compromised by fire, site should be isolated in a 0.5 miles radius.	48° 02.449' N	120° 04.428' W
Hazard		55gal barrel of hypochlorite solution(BG 154, UN 1793) inside pumphouse. Can aerosolize if exposed to heat and flame. If structure is compromised by fire, site should be isolated in a 0.5 miles radius.	47° 52.729' N	120° 08.487' W
Hazard		55gal barrel of hypochlorite solution(BG 154, UN 1793) inside pumphouse. Can aerosolize if exposed to heat and flame. If structure is compromised by fire, site should be isolated in a 0.5 miles radius.	47° 52.960' N	120° 09.347' W
Hazard		55gal barrel of hypochlorite solution(BG 154, UN 1793) inside pumphouse. Can aerosolize if exposed to heat and flame. If structure is compromised by fire, site should be isolated in a 0.5 miles radius.	48° 01.921' N	120° 01.612' W
Hazard		55gal barrel of hypochlorite solution(BG 154, UN 1793) inside pumphouse. Can aerosolize if exposed to heat and flame. If structure is compromised by fire, site should be isolated in a 0.5 miles radius.	48° 21.149' N	120° 44.073' W
Hazard		55gal barrel of hypochlorite solution(BG 154, UN 1793) inside pumphouse. Can aerosolize if exposed to heat and flame. If structure is compromised by fire, site should be isolated in a 0.5 miles radius.	48° 21.875' N	120° 45.036' W
Hazard		55gal barrel of hypochlorite solution(BG 154, UN 1793) inside pumphouse. Can aerosolize if exposed to heat and flame. If structure is compromised by fire, site should be isolated in a 0.5 miles radius.	48° 20.860' N	120° 41.467' W
Hazard		55gal barrel of hypochlorite solution(BG 154, UN 1793) inside pumphouse. Can aerosolize if exposed to heat and flame. If structure is compromised by fire, site should be isolated in a 0.5 miles radius.	48° 20.922' N	120° 43.935' W
Hazard		55gal barrel of hypochlorite solution(BG 154, UN 1793) inside pumphouse. Can aerosolize if exposed to heat and flame. If structure is compromised by fire, site should be isolated in a 0.5 miles radius.	48° 22.826' N	120° 50.288' W
Hazard		55gal barrel of hypochlorite solution(BG 154, UN 1793) inside pumphouse. Can aerosolize if exposed to heat and flame. If structure is compromised by fire, site should be isolated in a 0.5 miles radius.	48° 02.449' N	120° 04.428' W
Hazard		55gal barrel of hypochlorite solution(BG 154, UN 1793) inside pumphouse. Can aerosolize if exposed to heat and flame. If structure is compromised by fire, site should be isolated in a 0.5 miles radius.	47° 52.729' N	120° 08.487' W
Hazard		55gal barrel of hypochlorite solution(BG 154, UN 1793) inside pumphouse. Can aerosolize if exposed to heat and flame. If structure is compromised by fire, site should be isolated in a 0.5 miles radius.	47° 52.960' N	120° 09.347' W
Hazard		55gal barrel of hypochlorite solution(BG 154, UN 1793) inside pumphouse. Can aerosolize if exposed to heat and flame. If structure is compromised by fire, site should be isolated in a 0.5 miles radius.	48° 01.921' N	120° 01.612' W

- Helicopter
- Helibase
- ✕ Division Break
- ✕ Branch Break
- Incident Command Post
- Drop Point
- Closure
- Camp
- Staging Area
- Gate
- Fire Station
- Bridge
- Repeater
- Hazard
- Parking
- Docks
- Mountain Peaks
- Campground
- Camping Area
- Group Campground
- Lookout/Cabin
- Observation Site
- Snowpack
- Trailhead
- Other
- Access Route
- Escape Route
- Contained
- Uncontained
- Campgrounds
- Stehekin Roads
- Ferry
- Footbridge
- Highway
- Road - Light Duty - Dirt
- Road - Light Duty - Gravel
- Road - Light Duty - Paved
- Road - Light Duty - Unspecified Composition
- Road - Unimproved
- Trail
- Under/Overpass Space - Rd/R.R.
- Primary Transportation Route
- Comms Transportation Route
- Fire Area