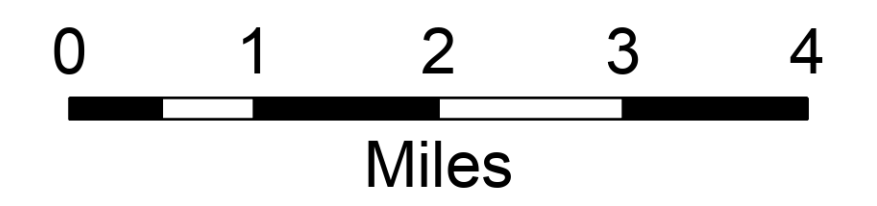


Security Transportation

Pioneer Fire WA-SES-000173 08/19/2024

38,727 acres on 8/17/24 @ 0030

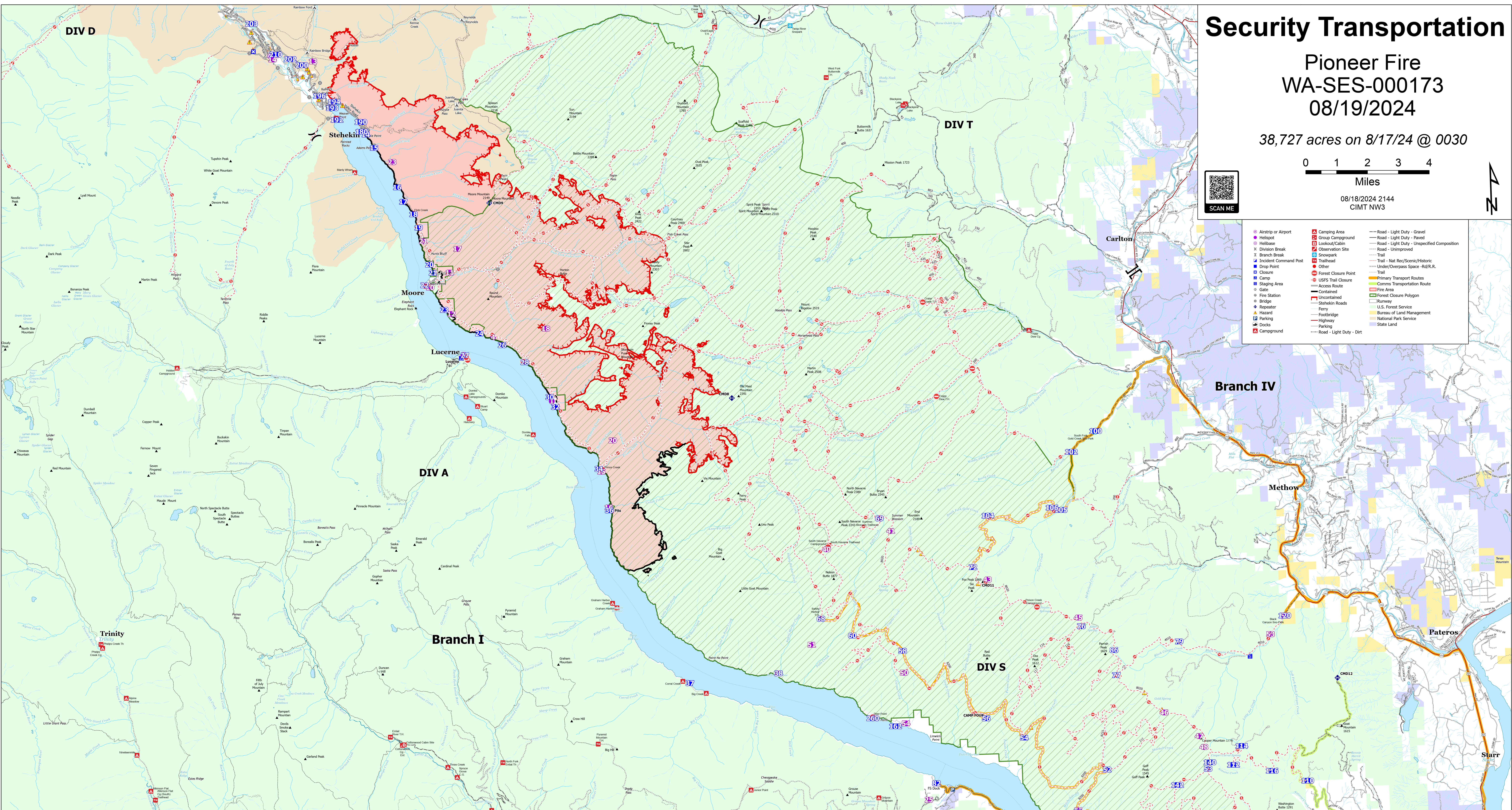


0 1 2 3 4
Miles

08/18/2024 2144
CIMT NW3



- Airport or Airport
- Helibase
- Division Break
- Branch Break
- Incident Command Post
- Drop Point
- Clouse
- Camp
- Staging Area
- Gate
- Fire Station
- Responder
- Hazard
- Parking
- Compound
- Camping Area
- Group Campground
- Lookout/Cabin
- Snowpack
- Trailhead
- Other
- Forest Closure Point
- USFS Trail Closure
- Access Route
- Uncontaminated
- Footbridge
- Ferry
- Parking
- Compound
- Road - Light Duty - Gravel
- Road - Light Duty - Paved
- Road - Light Duty - Unspecified Composition
- Road - Unimproved
- Trail
- Trail - Nat Rec/Scenic/Historic
- Under/Overpass Space - Rq/R.R.
- Primary Transport Routes
- Comms Transportation Route
- Runway
- Fire Area
- Forest Closure Polygon
- U.S. Forest Service
- Bureau of Land Management
- National Park Service
- State Land



FC Point Type	Label	Comments	Latitude WGS84 DDM	Longitude WGS84 DDM
Camp	CAMP FC01		48° 12.0447' N	120° 14.048' W
Camp	Lucerne		48° 12.011' N	120° 15.550' W
Camp	Stehakin Ranch Spike		48° 22.623' N	120° 47.660' W
Drop Point	DP100		48° 09.910' N	120° 20.269' W
Drop Point	DP102		48° 08.852' N	120° 18.480' W
Drop Point	DP104	DP104: dump site being pulled at DP104 due to low creek water. haul/fill/pump 779A/2024	48° 07.815' N	120° 15.626' W
Drop Point	DP105		48° 07.230' N	120° 15.540' W
Drop Point	DP106		48° 07.010' N	120° 15.500' W
Drop Point	DP107		48° 05.550' N	120° 00.625' W
Drop Point	DP108		48° 05.860' N	120° 03.710' W
Drop Point	DP109		48° 05.000' N	120° 03.300' W
Drop Point	DP110	Good option for clear medevac site for road crew and staging area for equipment now that DP 110 will have so much timber	48° 04.611' N	120° 03.100' W
Drop Point	DP111	Block Canyon Show Park, New volume staged pumps with 1201, 240 and with 2023-2024	48° 04.000' N	120° 03.100' W
Drop Point	DP112		48° 03.710' N	120° 03.100' W
Drop Point	DP113		48° 03.710' N	120° 03.100' W
Drop Point	DP114		48° 03.710' N	120° 03.100' W
Drop Point	DP115		48° 03.710' N	120° 03.100' W
Drop Point	DP116		48° 03.710' N	120° 03.100' W
Drop Point	DP117		48° 03.710' N	120° 03.100' W
Drop Point	DP118		48° 03.710' N	120° 03.100' W
Drop Point	DP119		48° 03.710' N	120° 03.100' W
Drop Point	DP120		48° 03.710' N	120° 03.100' W
Drop Point	DP121		48° 03.710' N	120° 03.100' W
Drop Point	DP122		48° 03.710' N	120° 03.100' W
Drop Point	DP123		48° 03.710' N	120° 03.100' W
Drop Point	DP124		48° 03.710' N	120° 03.100' W
Drop Point	DP125		48° 03.710' N	120° 03.100' W
Drop Point	DP126		48° 03.710' N	120° 03.100' W
Drop Point	DP127		48° 03.710' N	120° 03.100' W
Drop Point	DP128		48° 03.710' N	120° 03.100' W
Drop Point	DP129		48° 03.710' N	120° 03.100' W
Drop Point	DP130		48° 03.710' N	120° 03.100' W
Drop Point	DP131		48° 03.710' N	120° 03.100' W
Drop Point	DP132		48° 03.710' N	120° 03.100' W
Drop Point	DP133		48° 03.710' N	120° 03.100' W
Drop Point	DP134		48° 03.710' N	120° 03.100' W
Drop Point	DP135		48° 03.710' N	120° 03.100' W
Drop Point	DP136		48° 03.710' N	120° 03.100' W
Drop Point	DP137		48° 03.710' N	120° 03.100' W
Drop Point	DP138		48° 03.710' N	120° 03.100' W
Drop Point	DP139		48° 03.710' N	120° 03.100' W
Drop Point	DP140		48° 03.710' N	120° 03.100' W
Drop Point	DP141		48° 03.710' N	120° 03.100' W
Drop Point	DP142		48° 03.710' N	120° 03.100' W
Drop Point	DP143		48° 03.710' N	120° 03.100' W
Drop Point	DP144		48° 03.710' N	120° 03.100' W
Drop Point	DP145		48° 03.710' N	120° 03.100' W
Drop Point	DP146		48° 03.710' N	120° 03.100' W
Drop Point	DP147		48° 03.710' N	120° 03.100' W
Drop Point	DP148		48° 03.710' N	120° 03.100' W
Drop Point	DP149		48° 03.710' N	120° 03.100' W
Drop Point	DP150		48° 03.710' N	120° 03.100' W
Drop Point	DP151		48° 03.710' N	120° 03.100' W
Drop Point	DP152		48° 03.710' N	120° 03.100' W
Drop Point	DP153		48° 03.710' N	120° 03.100' W
Drop Point	DP154		48° 03.710' N	120° 03.100' W

FC Point Type	Label	Comments	Latitude WGS84 DDM	Longitude WGS84 DDM
Drop Point	DP155		48° 03.710' N	120° 03.100' W
Drop Point	DP156		48° 03.710' N	120° 03.100' W
Drop Point	DP157		48° 03.710' N	120° 03.100' W
Drop Point	DP158		48° 03.710' N	120° 03.100' W
Drop Point	DP159		48° 03.710' N	120° 03.100' W
Drop Point	DP160		48° 03.710' N	120° 03.100' W
Drop Point	DP161		48° 03.710' N	120° 03.100' W
Drop Point	DP162		48° 03.710' N	120° 03.100' W
Drop Point	DP163		48° 03.710' N	120° 03.100' W
Drop Point	DP164		48° 03.710' N	120° 03.100' W
Drop Point	DP165		48° 03.710' N	120° 03.100' W
Drop Point	DP166		48° 03.710' N	120° 03.100' W
Drop Point	DP167		48° 03.710' N	120° 03.100' W
Drop Point	DP168		48° 03.710' N	120° 03.100' W
Drop Point	DP169		48° 03.710' N	120° 03.100' W
Drop Point	DP170		48° 03.710' N	120° 03.100' W
Drop Point	DP171		48° 03.710' N	120° 03.100' W
Drop Point	DP172		48° 03.710' N	120° 03.100' W
Drop Point	DP173		48° 03.710' N	120° 03.100' W
Drop Point	DP174		48° 03.710' N	120° 03.100' W
Drop Point	DP175		48° 03.710' N	120° 03.100' W
Drop Point	DP176		48° 03.710' N	120° 03.100' W
Drop Point	DP177		48° 03.710' N	120° 03.100' W
Drop Point	DP178		48° 03.710' N	120° 03.100' W
Drop Point	DP179		48° 03.710' N	120° 03.100' W
Drop Point	DP180		48° 03.710' N	120° 03.100' W
Drop Point	DP181		48° 03.710' N	120° 03.100' W
Drop Point	DP182		48° 03.710' N	120° 03.100' W
Drop Point	DP183		48° 03.710' N	120° 03.100' W
Drop Point	DP184		48° 03.710' N	120° 03.100' W
Drop Point	DP185		48° 03.710' N	120° 03.100' W
Drop Point	DP186		48° 03.710' N	120° 03.100' W
Drop Point	DP187		48° 03.710' N	120° 03.100' W
Drop Point	DP188		48° 03.710' N	120° 03.100' W
Drop Point	DP189		48° 03.710' N	120° 03.100' W
Drop Point	DP190		48° 03.710' N	120° 03.100' W
Drop Point	DP191		48° 03.710' N	120° 03.100' W
Drop Point	DP192		48° 03.710' N	120° 03.100' W
Drop Point	DP193		48° 03.710' N	120° 03.100' W
Drop Point	DP194		48° 03.710' N	120° 03.100' W
Drop Point	DP195		48° 03.710' N	120° 03.100' W
Drop Point	DP196		48° 03.710' N	120° 03.100' W
Drop Point	DP197		48° 03.710' N	120° 03.100' W
Drop Point	DP198		48° 03.710' N	120° 03.100' W
Drop Point	DP199		48° 03.710' N	120° 03.100' W
Drop Point	DP200		48° 03.710' N	120° 03.100' W

FC Point Type	Label	Comments	Latitude WGS84 DDM	Longitude WGS84 DDM
Drop Point	DP201		48° 03.710' N	120° 03.100' W
Drop Point	DP202		48° 03.710' N	120° 03.100' W
Drop Point	DP203		48° 03.710' N	120° 03.100' W
Drop Point	DP204		48° 03.710' N	120° 03.100' W
Drop Point	DP205		48° 03.710' N	120° 03.100' W
Drop Point	DP206		48° 03.710' N	120° 03.100' W
Drop Point	DP207		48° 03.710' N	120° 03.100' W
Drop Point	DP208		48° 03.710' N	120° 03.100' W
Drop Point	DP209		48° 03.710' N	120° 03.100' W
Drop Point	DP210		48° 03.710' N	120° 03.100' W
Drop Point	DP211		48° 03.710' N	120° 03.100' W
Drop Point	DP212		48° 03.710' N	120° 03.100' W
Drop Point	DP213		48° 03.710' N	120° 03.100' W
Drop Point	DP214		48° 03.710' N	120° 03.100' W
Drop Point	DP215		48° 03.710' N	120° 03.100' W
Drop Point	DP216		48° 03.710' N	120° 03.100' W
Drop Point	DP217		48° 03.710' N	120° 03.100' W
Drop Point	DP218		48° 03.710' N	120° 03.100' W
Drop Point	DP219		48° 03.710' N	120° 03.100' W
Drop Point	DP220		48° 03.710' N	120° 03.100' W
Drop Point	DP221		48° 03.710' N	120° 03.100' W
Drop Point	DP222		48° 03.710' N	120° 03.100' W
Drop Point	DP223		48° 03.710' N	120° 03.100' W
Drop Point	DP224		48° 03.710' N	120° 03.100' W
Drop Point	DP225		48° 03.710' N	120° 03.100' W
Drop Point	DP226		48° 03.710' N	120° 03.100' W
Drop Point	DP227		48° 03.710' N	120° 03.100' W
Drop Point	DP228		48° 03.710' N	120° 03.100' W
Drop Point	DP229		48° 03.710' N	120° 03.100' W
Drop Point	DP230		48° 03.710' N	120° 03.100' W
Drop Point	DP231		48° 03.710' N	120° 03.100' W
Drop Point	DP232		48° 03.710' N	120° 03.100' W
Drop Point	DP233		48° 03.710' N	120° 03.100' W
Drop Point	DP234		48° 03.710' N	120° 03.100' W
Drop Point	DP235		48° 03.710' N	120° 03.100' W
Drop Point	DP236		48° 03.710' N	120° 03.100' W
Drop Point	DP237		48° 03.710' N	120° 03.100' W
Drop Point	DP238		48° 03.710' N	120° 03.100' W
Drop Point	DP239		48° 03.710' N	120° 03.100' W
Drop Point	DP240		48° 03.710' N	120° 03.100' W
Drop Point	DP241		48° 03.710' N	120° 03.100' W
Drop Point	DP242		48° 03.710' N	120° 03.100' W
Drop Point	DP243		48° 03.710' N	120° 03.100' W
Drop Point	DP244		48° 03.710' N	120° 03.100' W
Drop Point	DP245		48° 03.710' N	120° 03.100' W
Drop Point	DP246		48° 03.710' N	120° 03.100' W
Drop Point	DP247		48° 03.710' N	120° 03.100' W
Drop Point	DP248		48° 03.710' N	120° 03.100' W
Drop Point	DP249		48° 03.710' N	120° 03.100' W
Drop Point	DP250		48° 03.710' N	120° 03.100' W

FC Point Type	Label	Comments	Latitude WGS84 DDM	Longitude WGS84 DDM
Drop Point	DP251		48° 03.710' N	120° 03.100' W
Drop Point	DP252		48° 03.710' N	120° 03.100' W
Drop Point	DP253		48° 03.710' N	120° 03.100' W
Drop Point	DP254		48° 03.710' N	120° 03.100' W
Drop Point	DP255		48° 03.710' N	120° 03.100' W
Drop Point	DP256		48° 03.710' N	120° 03.100' W
Drop Point	DP257		48° 03.710' N	120° 03.100' W
Drop Point	DP258		48° 03.710' N	120° 03.100' W
Drop Point	DP259		48° 03.710' N	120° 03.100' W
Drop Point	DP260		48° 03.710' N	120° 03.100' W
Drop Point	DP261		48° 03.710' N	120° 03.100' W
Drop Point	DP262		48° 03.710' N	120° 03.100' W
Drop Point	DP263		48° 03.710' N	120° 03.100' W
Drop Point	DP264		48° 03.710' N	120° 03.100' W
Drop Point	DP265		48° 03.710' N	120° 03.100' W
Drop Point	DP266		48° 03.710' N	120° 03.100' W
Drop Point	DP267		48° 03.710' N	120° 03.100' W
Drop Point	DP268		48° 03.710' N	120° 03.100' W
Drop Point	DP269		48° 03.710' N	120° 03.100' W
Drop Point	DP270		48° 03.710' N	120° 03.100' W
Drop Point	DP271		48° 03.710' N	120° 03.100' W
Drop Point	DP272		48° 03.710' N	120° 03.100' W
Drop Point	DP273		48° 03.710' N	120° 03.100' W
Drop Point	DP274		48° 03.710' N	120° 03.100' W
Drop Point	DP275		48° 03.710' N	120° 03.100' W
Drop Point	DP276		48° 03.710' N	120° 03.100' W
Drop Point	DP277		48° 03.710' N	120° 03.100' W
Drop Point	DP278		48° 03.710' N	120° 03.100' W
Drop Point	DP279		48° 03.710' N	120° 03.100' W
Drop Point	DP280		48° 03.710' N	120° 03.100' W
Drop Point	DP281		48° 03.710' N	120° 03.100' W
Drop Point	DP282		48° 03.710' N	120° 03.100' W
Drop Point	DP283		48° 03.710' N	120° 03.100' W
Drop Point	DP284		48° 03.710' N	120° 03.100' W
Drop Point	DP285		48° 03.710' N	120° 03.100' W
Drop Point	DP286		48° 03.710' N	