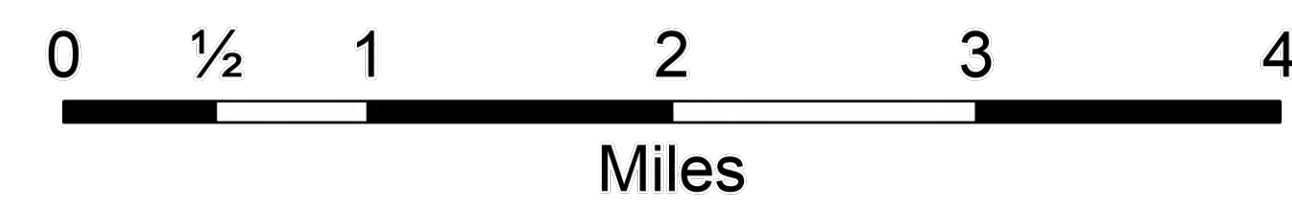
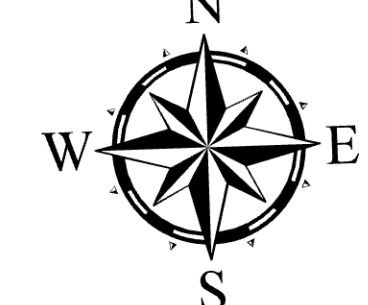
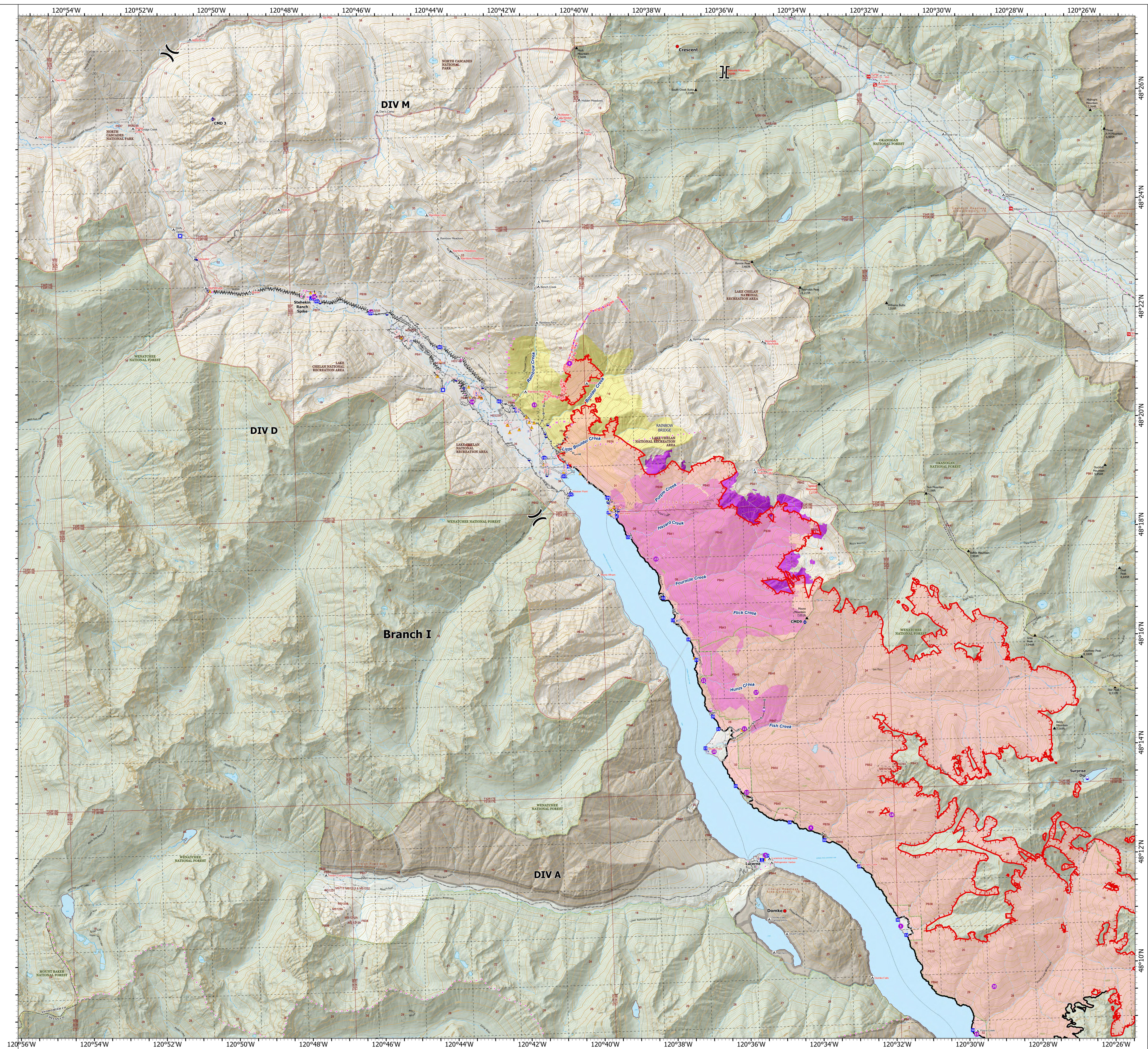


# Operations

Branch I - North  
Pioneer  
WA-SES-000173  
08/20/2024

38,727 acres on 8/18/24 @ 2200

- Helispot
- Sling Site
- ⌵ Division Break
- ⌞ Branch Break
- Drop Point
- ⊠ Closure
- ⊠ Camp
- Hot Spot - Spot Fire
- ⊠ Mobile Weather Unit
- ⊠ Repeater
- ⚠ Hazard
- Dip Site
- ⊠ Draft Site
- New Starts
- ⊠ Other Property
- ⊠ Pump
- ⊠ Water Tank
- ⊠ Completed Fuel Break
- Completed Hand Line
- Completed Mixed Construction Line
- Completed Road as Line
- Planned Hand Line
- Planned Road as Line
- Proposed Line
- Retardant Drop
- Contained
- Uncontained
- Fire Area
- Historic Fire Perimeters
  - Flick Creek (2006)
  - Rainbow Bridge (2010)
  - Wilderness
- Roadless Area
- U.S. Forest Service
- Bureau of Land Management
- National Park Service



1:40,000 | CIMT NW3 | 08/19/2024 2120  
Remote Sensing  
North American 1983 Datum, Lat/Long Grid