

Security Transportation

Pioneer Fire
WA-SES-000173
08/20/2024

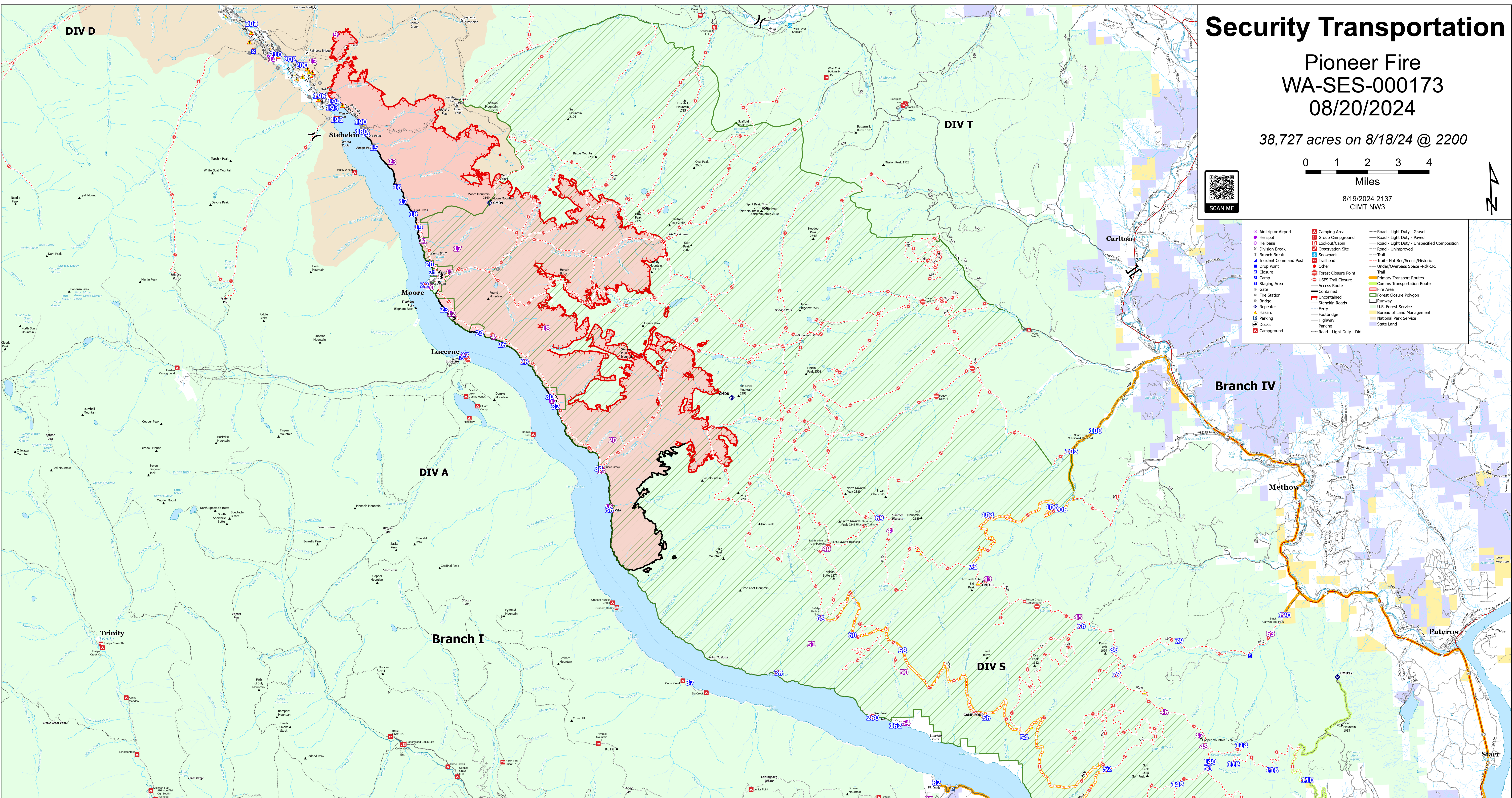
38,727 acres on 8/18/24 @ 2200

0 1 2 3 4
Miles

8/19/2024 2137
CIMT NW3



- Airport or Airport
- Helibase
- Division Break
- Branch Break
- Incident Command Post
- Drop Point
- Closure
- Camp
- Staging Area
- Gate
- Fire Station
- Responder
- Parking
- Truck
- Campground
- Camping Area
- Group Campground
- Lookout/Cabin
- Observation Site
- Snowpack
- Trailhead
- Other
- Forest Closure Point
- USFS Trail Closure
- Access Route
- Uncontaminated
- Footbridge
- Highway
- Parking
- Road - Light Duty - Gravel
- Road - Light Duty - Paved
- Road - Light Duty - Unspecified Composition
- Road - Unimproved
- Trail
- Trail - Nat Rec/Scenic/Historic
- Under/Overpass Space - Rq/R.R.
- Primary Transport Routes
- Comms Transportation Route
- Fire Area
- Forest Closure Polygon
- Runway
- U.S. Forest Service
- Bureau of Land Management
- National Park Service
- State Land



IC Point Type	Label	Comments	Latitude WGS84 DDM	Longitude WGS84 DDM	IC Point Type	Label	Comments	Latitude WGS84 DDM	Longitude WGS84 DDM
Camp	CAMP FOUR		48° 03' 48.7 N	120° 14' 00.0 W	Drop Point	58		48° 03' 47.7 N	120° 17' 40.0 W
Camp	Lucerne		48° 22' 07.1 N	120° 15' 58.0 W	Drop Point	59		48° 03' 00.0 N	120° 18' 00.0 W
Camp	Stehkin Ranch Spike		48° 22' 03.7 N	120° 47' 45.0 W	Drop Point	60		48° 04' 40.7 N	120° 20' 20.0 W
Drop Point	100	DP100	48° 09' 41.7 N	120° 08' 07.0 W	Drop Point	61		48° 07' 17.5 N	120° 18' 15.0 W
Drop Point	102	DP102	48° 08' 48.0 N	120° 10' 00.0 W	Drop Point	72		48° 05' 20.7 N	120° 14' 32.0 W
Drop Point	104	DP104 (death site being pulled at DP104 due to low creek water. Reel Rodriguez 7/04/2024)	48° 07' 14.7 N	120° 13' 43.0 W	Drop Point	75		48° 05' 03.9 N	120° 08' 57.0 W
Drop Point	105		48° 02' 03.0 N	120° 05' 45.0 W	Drop Point	77		48° 02' 58.0 N	120° 08' 45.0 W
Drop Point	106		48° 07' 35.0 N	120° 02' 00.0 W	Drop Point	79		48° 03' 45.0 N	120° 05' 20.0 W
Drop Point	107		47° 59' 35.0 N	120° 06' 00.0 W	Drop Point	81		47° 59' 35.0 N	120° 06' 00.0 W
Drop Point	108		47° 59' 35.0 N	120° 05' 15.0 W	Drop Point	84		47° 58' 15.0 N	120° 12' 00.0 W
Drop Point	110		48° 00' 40.0 N	120° 03' 30.0 W	Drop Point	85		48° 02' 24.0 N	120° 08' 53.0 W
Drop Point	114	Good option for closer mid-site for road crew and staging area for equipment now that DP 110 will have to much timber. Black Canyon Stock Park, two volume staged pumps rack 1222-248 and rack 1222-245	47° 59' 47.0 N	120° 03' 10.0 W	Hazard	86		47° 58' 15.0 N	120° 12' 00.0 W
Drop Point	120		48° 04' 02.0 N	120° 03' 30.0 W	Hazard	87		48° 06' 49.7 N	120° 13' 40.0 W
Drop Point	123		48° 22' 00.0 N	120° 07' 22.0 W	Hazard	88		48° 06' 22.0 N	120° 14' 00.0 W
Drop Point	140	DP 14	48° 18' 44.7 N	120° 39' 20.0 W	Hazard	89		48° 06' 14.4 N	120° 15' 42.0 W
Drop Point	142	Drop point 140	47° 59' 07.0 N	120° 06' 00.0 W	Hazard	90		48° 06' 22.0 N	120° 13' 00.0 W
Drop Point	143		47° 59' 07.0 N	120° 06' 00.0 W	Hazard	91		48° 05' 24.0 N	120° 14' 12.0 W
Drop Point	146	Drop point 146, would need to be pushed out with a dumper for fuel tanks and parking	47° 58' 43.7 N	120° 06' 55.0 W	Hazard	92		48° 01' 14.0 N	120° 12' 14.0 W
Drop Point	148	Drop point 148	47° 58' 07.0 N	120° 06' 55.0 W	Hazard	93		48° 12' 12.0 N	120° 34' 47.0 W
Drop Point	150		48° 18' 05.7 N	120° 38' 55.0 W	Hazard	94		48° 18' 02.0 N	120° 39' 42.0 W
Drop Point	151		48° 20' 03.0 N	120° 38' 55.0 W	Hazard	95		48° 18' 05.0 N	120° 39' 42.0 W
Drop Point	152	Release change from 152-362 as per SOP assigned numbers	48° 01' 31.8 N	120° 17' 83.0 W	Hazard	96		48° 18' 02.0 N	120° 39' 42.0 W
Drop Point	167	DP 16	48° 05' 52.1 N	120° 37' 20.0 W	Hazard	97		48° 20' 12.0 N	120° 41' 80.0 W
Drop Point	168		48° 05' 52.1 N	120° 37' 20.0 W	Hazard	98		48° 19' 59.0 N	120° 41' 20.0 W
Drop Point	180		48° 18' 53.7 N	120° 39' 45.0 W	Hazard	99		48° 19' 47.0 N	120° 41' 20.0 W
Drop Point	181		48° 15' 07.0 N	120° 39' 45.0 W	Hazard	100		48° 20' 27.0 N	120° 41' 20.0 W
Drop Point	190	Purple Point	48° 18' 05.7 N	120° 38' 55.0 W	Hazard	101		48° 20' 27.0 N	120° 41' 20.0 W
Drop Point	192		48° 22' 00.0 N	120° 07' 22.0 W	Hazard	102		48° 20' 03.0 N	120° 43' 22.0 W
Drop Point	193	Hubbard on Shaver Rd	48° 19' 21.7 N	120° 40' 55.0 W	Hazard	103		48° 20' 31.0 N	120° 43' 22.0 W
Drop Point	194	Gun Ball House	48° 19' 29.0 N	120° 40' 57.0 W	Hazard	104		48° 20' 31.0 N	120° 43' 22.0 W
Drop Point	196	Drop Point	48° 19' 29.0 N	120° 40' 57.0 W	Hazard	105		48° 20' 31.0 N	120° 43' 22.0 W
Drop Point	200	Drop Point	48° 19' 29.0 N	120° 40' 57.0 W	Hazard	106		48° 20' 31.0 N	120° 43' 22.0 W
Drop Point	202	Drop Point	48° 19' 29.0 N	120° 40' 57.0 W	Hazard	107		48° 20' 31.0 N	120° 43' 22.0 W
Drop Point	203	Drop Point	48° 19' 29.0 N	120° 40' 57.0 W	Hazard	108		48° 20' 31.0 N	120° 43' 22.0 W
Drop Point	204	Drop Point	48° 19' 29.0 N	120° 40' 57.0 W	Hazard	109		48° 20' 31.0 N	120° 43' 22.0 W
Drop Point	205	Drop Point	48° 19' 29.0 N	120° 40' 57.0 W	Hazard	110		48° 20' 31.0 N	120° 43' 22.0 W
Drop Point	206	Drop Point	48° 19' 29.0 N	120° 40' 57.0 W	Hazard	111		48° 20' 31.0 N	120° 43' 22.0 W
Drop Point	210	Drop Point	48° 19' 29.0 N	120° 40' 57.0 W	Hazard	112		48° 20' 31.0 N	120° 43' 22.0 W
Drop Point	212	Drop Point	48° 19' 29.0 N	120° 40' 57.0 W	Hazard	113		48° 20' 31.0 N	120° 43' 22.0 W
Drop Point	213	Drop Point	48° 19' 29.0 N	120° 40' 57.0 W	Hazard	114		48° 20' 31.0 N	120° 43' 22.0 W
Drop Point	214	Drop Point	48° 19' 29.0 N	120° 40' 57.0 W	Hazard	115		48° 20' 31.0 N	120° 43' 22.0 W
Drop Point	215	Drop Point	48° 19' 29.0 N	120° 40' 57.0 W	Hazard	116		48° 20' 31.0 N	120° 43' 22.0 W
Drop Point	216	Drop Point	48° 19' 29.0 N	120° 40' 57.0 W	Hazard	117		48° 20' 31.0 N	120° 43' 22.0 W
Drop Point	217	Drop Point	48° 19' 29.0 N	120° 40' 57.0 W	Hazard	118		48° 20' 31.0 N	120° 43' 22.0 W
Drop Point	218	Drop Point	48° 19' 29.0 N	120° 40' 57.0 W	Hazard	119		48° 20' 31.0 N	120° 43' 22.0 W
Drop Point	219	Drop Point	48° 19' 29.0 N	120° 40' 57.0 W	Hazard	120		48° 20' 31.0 N	120° 43' 22.0 W
Drop Point	220	Drop Point	48° 19' 29.0 N	120° 40' 57.0 W	Hazard	121		48° 20' 31.0 N	120° 43' 22.0 W
Drop Point	221	Drop Point	48° 19' 29.0 N	120° 40' 57.0 W	Hazard	122		48° 20' 31.0 N	120° 43' 22.0 W
Drop Point	222	Drop Point	48° 19' 29.0 N	120° 40' 57.0 W	Hazard	123		48° 20' 31.0 N	120° 43' 22.0 W
Drop Point	223	Drop Point	48° 19' 29.0 N	120° 40' 57.0 W	Hazard	124		48° 20' 31.0 N	120° 43' 22.0 W
Drop Point	224	Drop Point	48° 19' 29.0 N	120° 40' 57.0 W	Hazard	125		48° 20' 31.0 N	120° 43' 22.0 W
Drop Point	225	Drop Point	48° 19' 29.0 N	120° 40' 57.0 W	Hazard	126		48° 20' 31.0 N	120° 43' 22.0 W
Drop Point	226	Drop Point	48° 19' 29.0 N	120° 40' 57.0 W	Hazard	127		48° 20' 31.0 N	120° 43' 22.0 W
Drop Point	227	Drop Point	48° 19' 29.0 N	120° 40' 57.0 W	Hazard	128		48° 20' 31.0 N	120° 43' 22.0 W
Drop Point	228	Drop Point	48° 19' 29.0 N	120° 40' 57.0 W	Hazard	129		48° 20' 31.0 N	120° 43' 22.0 W
Drop Point	229	Drop Point	48° 19' 29.0 N	120° 40' 57.0 W	Hazard	130		48° 20' 31.0 N	120° 43' 22.0 W
Drop Point	230	Drop Point	48° 19' 29.0 N	120° 40' 57.0 W	Hazard	131		48° 20' 31.0 N	120° 43' 22.0 W
Drop Point	231	Drop Point	48° 19' 29.0 N	120° 40' 57.0 W	Hazard	132		48° 20' 31.0 N	120° 43' 22.0 W
Drop Point	232	Drop Point	48° 19' 29.0 N	120° 40' 57.0 W	Hazard	133		48° 20' 31.0 N	120° 43' 22.0 W
Drop Point	233	Drop Point	48° 19' 29.0 N	120° 40' 57.0 W	Hazard	134		48° 20' 31.0 N	120° 43' 22.0 W
Drop Point	234	Drop Point	48° 19' 29.0 N	120° 40' 57.0 W	Hazard	135		48° 20' 31.0 N	120° 43' 22.0 W
Drop Point	235	Drop Point	48° 19' 29.0 N	120° 40' 57.0 W	Hazard	136		48° 20' 31.0 N	120° 43' 22.0 W
Drop Point	236	Drop Point	48° 19' 29.0 N	120° 40' 57.0 W	Hazard	137		48° 20' 31.0 N	120° 43' 22.0 W
Drop Point	237	Drop Point	48° 19' 29.0 N	120° 40' 57.0 W	Hazard	138		48° 20' 31.0 N	120° 43' 22.0 W
Drop Point	238	Drop Point	48° 19' 29.0 N	120° 40' 57.0 W	Hazard	139		48° 20' 31.0 N	120° 43' 22.0 W
Drop Point	239	Drop Point	48° 19' 29.0 N	120° 40' 57.0 W	Hazard	140		48° 20' 31.0 N	120° 43' 22.0 W
Drop Point	240	Drop Point	48° 19' 29.0 N	120° 40' 57.0 W	Hazard	141		48° 20' 31.0 N	120° 43' 22.0 W
Drop Point	241	Drop Point	48° 19' 29.0 N	120° 40' 57.0 W	Hazard	142		48° 20' 31.0 N	120° 43' 22.0 W
Drop Point	242	Drop Point	48° 19' 29.0 N	120° 40' 57.0 W	Hazard	143		48° 20' 31.0 N	120° 43' 22.0 W
Drop Point	243	Drop Point	48° 19' 29.0 N	120° 40' 57.0 W	Hazard	144		48° 20' 31.0 N	120° 43' 22.0 W
Drop Point	244	Drop Point	48° 19' 29.0 N	120° 40' 57.0 W	Hazard	145		48° 20' 31.0 N	120° 43' 22.0 W
Drop Point	245	Drop Point	48° 19' 29.0 N	120° 40' 57.0 W	Hazard	146		48° 20' 31.0 N	120° 43' 22.0 W
Drop Point	246	Drop Point	48° 19' 29.0 N	120° 40' 57.0 W	Hazard	147		48° 20' 31.0 N	120° 43' 22.0 W
Drop Point	247	Drop Point	48° 19' 29.0 N	120° 40' 57.0 W	Hazard	148		48° 20' 31.0 N	120° 43' 22.0 W
Drop Point	248	Drop Point	48° 19' 29.0 N	120° 40' 57.0 W	Hazard	149		48° 20' 31.0 N	120° 43' 22.0 W
Drop Point	249	Drop Point	48° 19' 29.0 N	120° 40' 57.0 W	Hazard	150		48° 20' 31.0 N	120° 43' 22.0 W
Drop Point	250	Drop Point	48° 19' 29.0 N	120° 40' 57.0 W	Hazard	151		48° 20' 31.0 N	120° 43' 22.0 W
Drop Point	251	Drop Point	48° 19' 29.0 N	120° 40' 57.0 W	Hazard	152		48° 20' 31.0 N	120° 43' 22.0 W
Drop Point	252	Drop Point	48° 19' 29.0 N	120° 40' 57.0 W	Hazard	153		48° 20' 31.0 N	120° 43' 22.0 W
Drop Point	253	Drop Point	48° 19' 29.0 N	120° 40' 57.0 W	Hazard	154		48° 20' 31.0 N	120° 43' 22.0 W
Drop Point	254	Drop Point	48° 19' 29.0 N	120° 40' 57.0 W	Hazard	155		48° 20' 31.0 N	120° 43' 22.0 W
Drop Point	255	Drop Point	48° 19' 29.0 N	120° 40' 57.0 W	Hazard	156		48° 20' 31.0 N	120° 43' 22.0 W
Drop Point	256	Drop Point	48° 19' 29.0 N	120° 40' 57.0 W	Hazard	157		48° 20' 31.0 N	120° 43' 22.0 W
Drop Point	257	Drop Point	48° 19' 29.0 N	120° 40' 57.0 W	Hazard	158		48° 20' 31.0 N	120° 43' 22.0 W
Drop Point	258	Drop Point	48° 19' 29.0 N	120° 40' 57.0 W	Hazard	159		48° 20' 31.0 N	120° 43' 22.0 W
Drop Point	259	Drop Point	48° 19' 29.0 N	120° 40' 57.0 W	Hazard	160		48° 20' 31.0 N	120° 43' 22.0 W
Drop Point	260	Drop Point	48° 19' 29.0 N	120° 40' 57.0 W	Hazard	161		48° 20' 31.0 N	120° 43' 22.0 W
Drop Point	261	Drop Point	48° 19' 29.0 N	120° 40' 57.0 W	Hazard	162		48° 20' 31.0 N	120° 43' 22.0 W
Drop Point	262	Drop Point	48° 19' 29.0 N	120° 40' 57.0 W	Hazard	163		48° 20' 31.0 N	120° 43' 22.0 W
Drop Point	263	Drop Point	48° 19' 29.0 N	120° 40' 57.0 W	Hazard	164		48° 20' 31.0 N	120° 43' 22.0 W
Drop Point	264	Drop Point	48° 19' 29.0 N	120° 40' 57.0 W	Hazard	165		48° 20' 31.0 N	120° 43' 22.0 W
Drop Point	265	Drop Point	48° 19' 29.0 N	120° 40' 57.0 W	Hazard	166		48° 20' 31.0 N	120° 43' 22.0 W
Drop Point	266	Drop Point	48° 19' 29.0 N	120° 40' 57.0 W	Hazard	167		48° 20' 31.0 N	120° 43' 22.0 W
Drop Point	267	Drop Point	48° 19' 29.0 N	120° 40' 57.0 W	Hazard	168		48° 20' 31.0 N	120° 43' 22.0 W
Drop Point	268	Drop Point	48° 19' 29.0 N	120° 40' 57.0 W	Hazard	169		48° 20' 31.0 N	120° 43' 22.0 W
Drop Point	269	Drop Point	48° 19' 29.0 N	120° 40' 57.0 W	Hazard	170		48° 20' 31.0 N	120° 43' 22.0 W