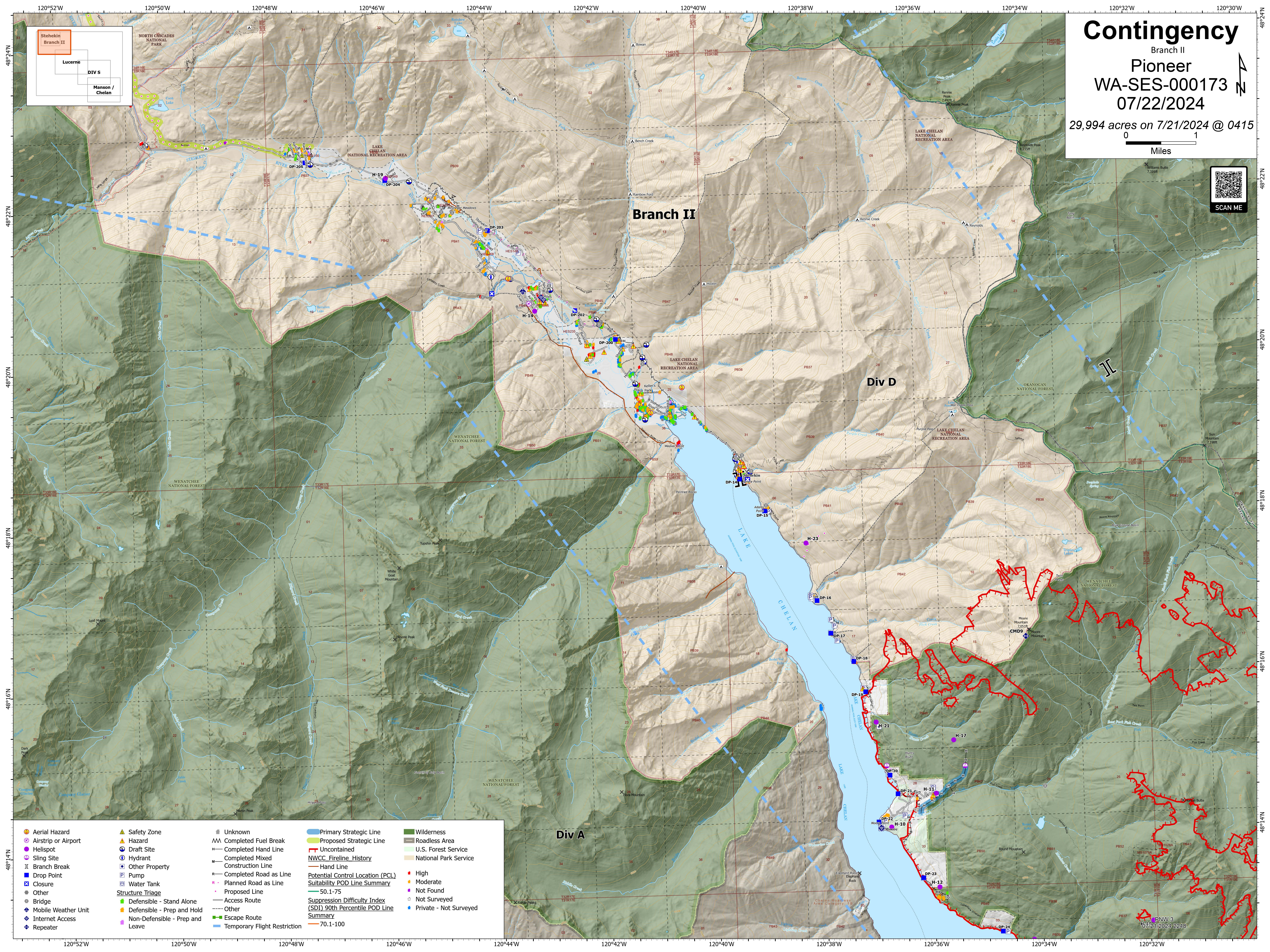
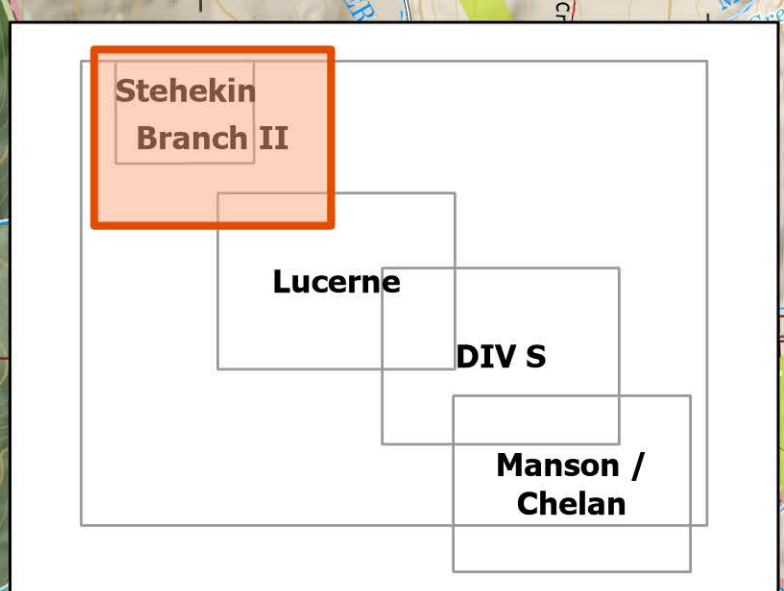


# Contingency

Branch II  
 Pioneer  
 WA-SES-000173  
 07/22/2024  
 29,994 acres on 7/21/2024 @ 0415

0 1  
 Miles



- |  |   |  |  |   |
|--|---|--|--|---|
| <ul style="list-style-type: none"> <li> Aerial Hazard</li> <li> Airstrip or Airport</li> <li> Helispot</li> <li> Sling Site</li> <li> Branch Break</li> <li> Drop Point</li> <li> Closure</li> <li> Other</li> <li> Bridge</li> <li> Mobile Weather Unit</li> <li> Internet Access</li> <li> Repeater</li> </ul> | <ul style="list-style-type: none"> <li> Safety Zone</li> <li> Hazard</li> <li> Draft Site</li> <li> Hydrant</li> <li> Other Property</li> <li> Pump</li> <li> Water Tank</li> <li> Other</li> <li> Defensible - Stand Alone</li> <li> Defensible - Prep and Hold</li> <li> Non-Defensible - Prep and Leave</li> </ul> | <ul style="list-style-type: none"> <li> Unknown</li> <li> Completed Fuel Break</li> <li> Completed Hand Line</li> <li> Completed Mixed Construction Line</li> <li> Completed Road as Line</li> <li> Planned Road as Line</li> <li> Proposed Line</li> <li> Access Route</li> <li> Other</li> <li> Escape Route</li> <li> Temporary Flight Restriction</li> </ul> | <ul style="list-style-type: none"> <li> Primary Strategic Line</li> <li> Proposed Strategic Line</li> <li> Uncontained</li> <li> NWCC Fireline_History</li> <li> Hand Line</li> <li> Potential Control Location (PCL)</li> <li> Suitability POD Line Summary</li> <li> 50.1-75</li> <li> Suppression Difficulty Index (SDI) 90th Percentile POD Line Summary</li> <li> 70.1-100</li> </ul> | <ul style="list-style-type: none"> <li> Wilderness</li> <li> Roadless Area</li> <li> U.S. Forest Service</li> <li> National Park Service</li> <li> High</li> <li> Moderate</li> <li> Not Found</li> <li> Not Surveyed</li> <li> Private - Not Surveyed</li> </ul> |
|--|---|--|--|---|

07/21/2024 2248