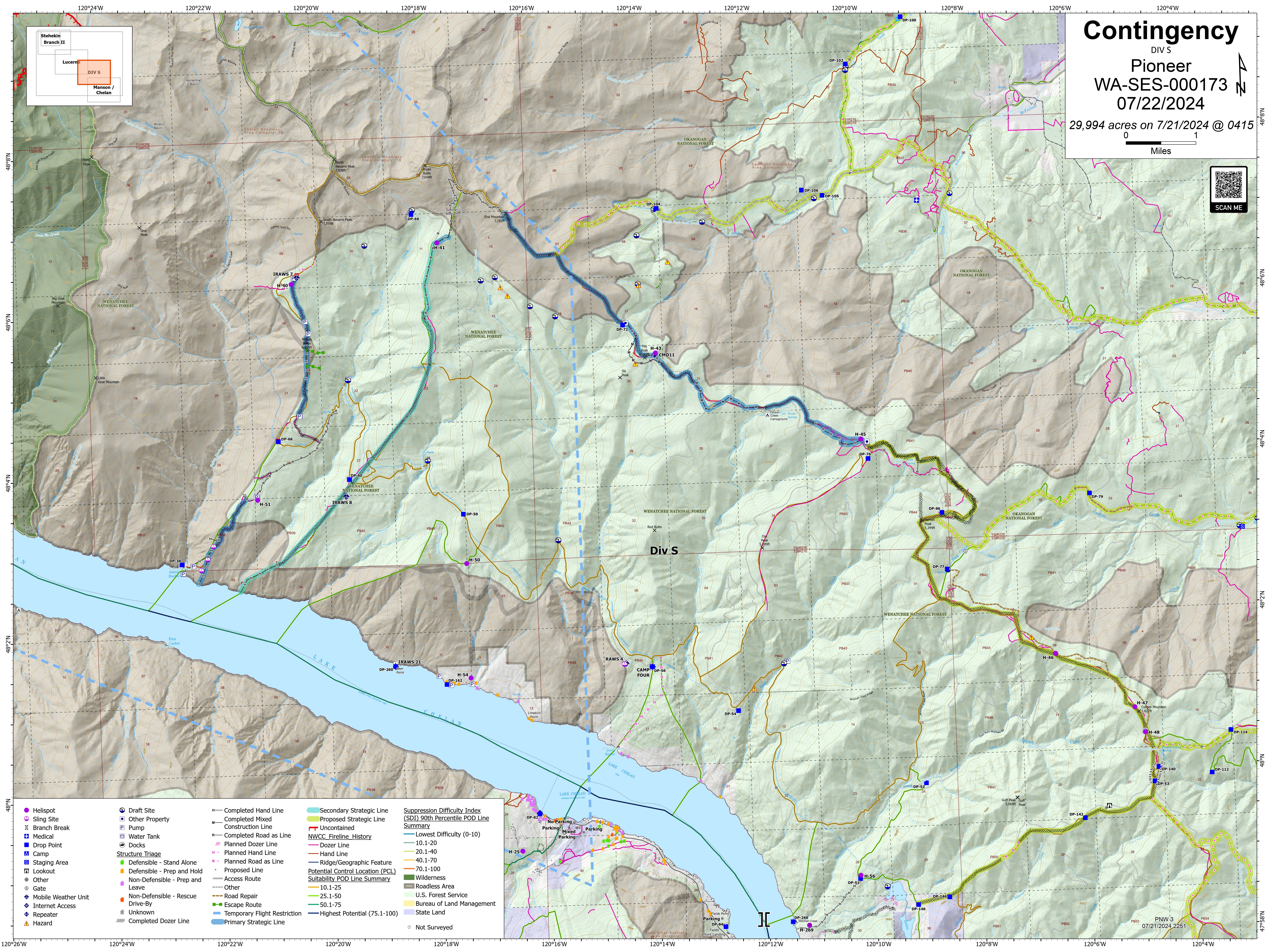
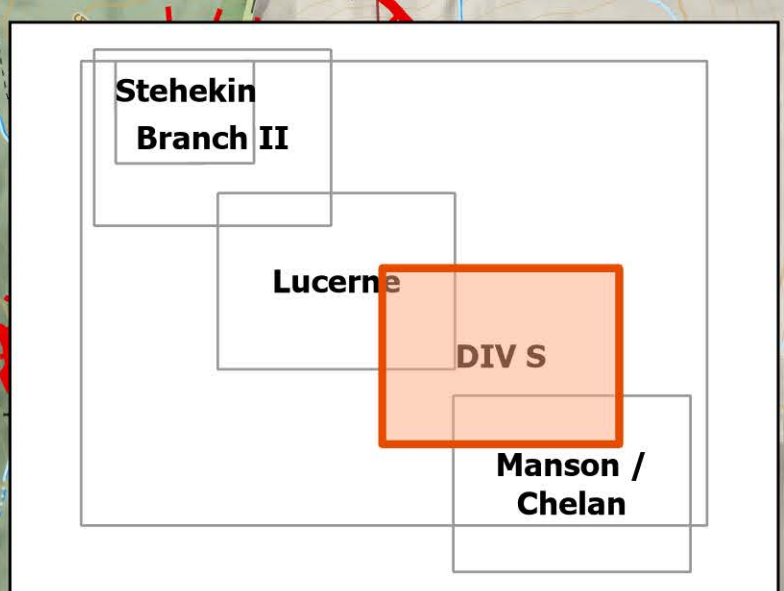


# Contingency

DIV S  
Pioneer  
WA-SES-000173  
07/22/2024

29,994 acres on 7/21/2024 @ 0415



- |  |   |  |   |  |
|--|---|--|---|--|
| <ul style="list-style-type: none"><li>Helispot</li><li>Sling Site</li><li>Branch Break</li><li>Medical</li><li>Drop Point</li><li>Camp</li><li>Staging Area</li><li>Lookout</li><li>Other</li><li>Gate</li><li>Mobile Weather Unit</li><li>Internet Access</li><li>Repeater</li><li>Hazard</li></ul> | <ul style="list-style-type: none"><li>Draft Site</li><li>Other Property</li><li>Pump</li><li>Water Tank</li><li>Docks</li></ul> | <ul style="list-style-type: none"><li>Completed Hand Line</li><li>Completed Mixed Construction Line</li><li>Completed Road as Line</li><li>Planned Dozer Line</li><li>Planned Hand Line</li><li>Planned Road as Line</li><li>Proposed Line</li><li>Access Route</li><li>Other</li><li>Road Repair</li><li>Escape Route</li><li>Temporary Flight Restriction</li><li>Primary Strategic Line</li></ul> | <ul style="list-style-type: none"><li>Secondary Strategic Line</li><li>Proposed Strategic Line</li><li>Uncontained</li><li>NWCC Fireline_History</li><li>Dozer Line</li><li>Hand Line</li><li>Ridge/Geographic Feature</li><li>Potential Control Location (PCL)</li><li>Suitability POD Line Summary</li><li>10.1-25</li><li>25.1-50</li><li>50.1-75</li><li>Highest Potential (75.1-100)</li></ul> | <ul style="list-style-type: none"><li>Suppression Difficulty Index (SDI) 90th Percentile POD Line Summary</li><li>Lowest Difficulty (0-10)</li><li>10.1-20</li><li>20.1-40</li><li>40.1-70</li><li>70.1-100</li><li>Wilderness</li><li>Roadless Area</li><li>U.S. Forest Service</li><li>Bureau of Land Management</li><li>State Land</li><li>Not Surveyed</li></ul> |
|--|---|--|---|--|

PNW 3  
07/21/2024 2251