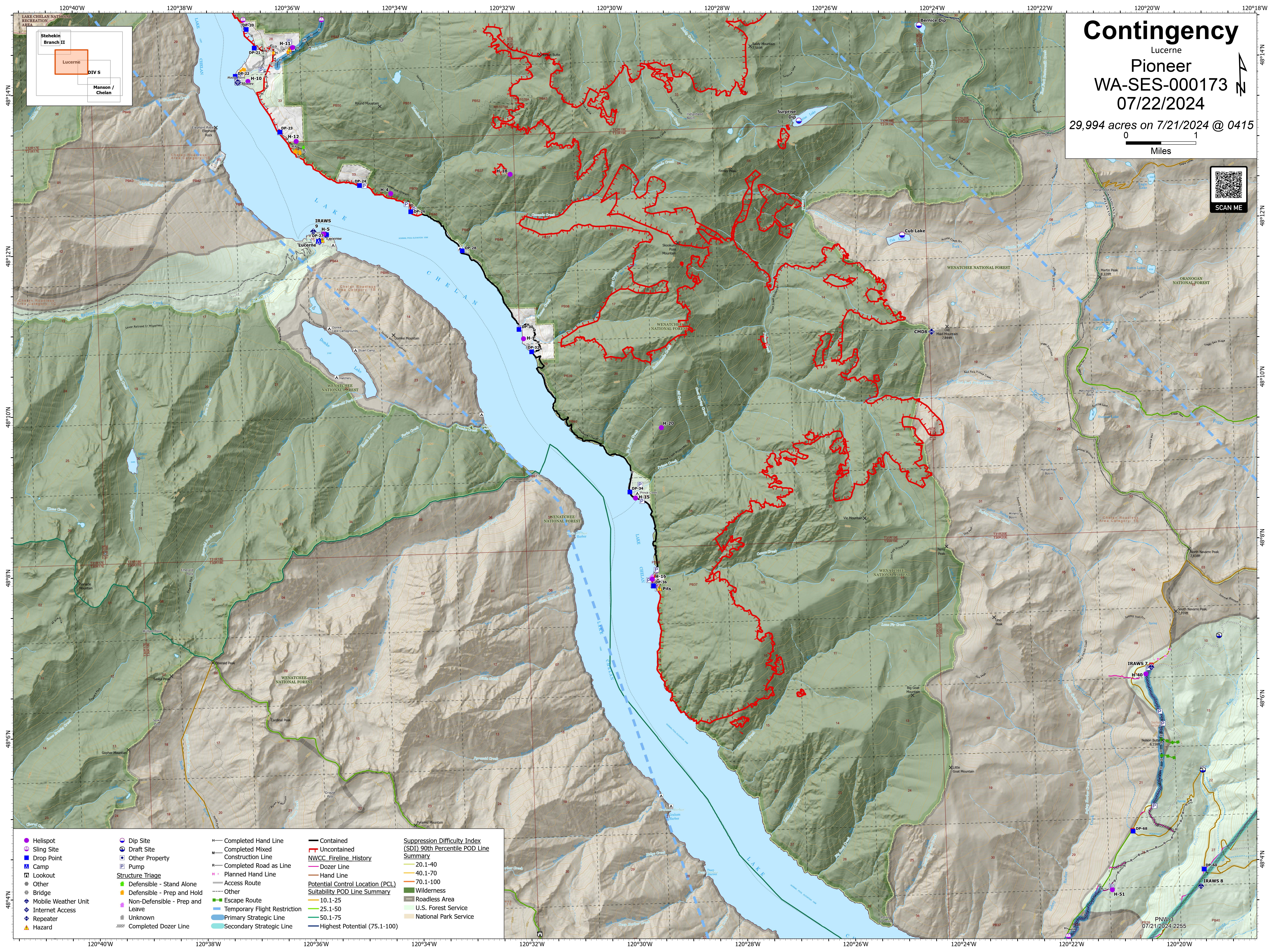
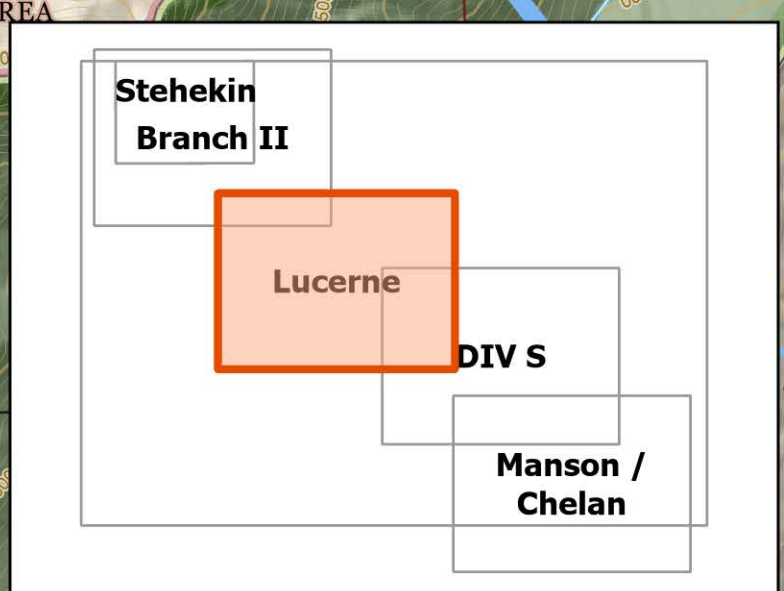


Contingency

Lucerne
Pioneer
WA-SES-000173
07/22/2024

29,994 acres on 7/21/2024 @ 0415



<ul style="list-style-type: none">● Helispot○ Sling Site■ Drop Point■ Camp■ Lookout● Other○ Bridge◆ Mobile Weather Unit◆ Internet Access◆ Repeater▲ Hazard	<ul style="list-style-type: none">○ Dip Site○ Draft Site□ Other Property□ Pump <p>Structure Triage</p> <ul style="list-style-type: none">■ Defensible - Stand Alone■ Defensible - Prep and Hold■ Non-Defensible - Prep and Leave■ Unknown⊗ Completed Dozer Line	<ul style="list-style-type: none">— Completed Hand Line— Completed Mixed Construction Line— Completed Road as Line— Planned Hand Line— Access Route— Other— Escape Route— Temporary Flight Restriction— Primary Strategic Line— Secondary Strategic Line	<ul style="list-style-type: none">— Contained— Uncontained <p>NWCC Fireline_History</p> <ul style="list-style-type: none">— Dozer Line— Hand Line <p>Potential Control Location (PCL) Suitability POD Line Summary</p> <ul style="list-style-type: none">— 10.1-25— 25.1-50— 50.1-75— Highest Potential (75.1-100)	<p>Suppression Difficulty Index (SDI) 90th Percentile POD Line Summary</p> <ul style="list-style-type: none">— 20.1-40— 40.1-70— 70.1-100 <ul style="list-style-type: none">■ Wilderness■ Roadless Area■ U.S. Forest Service■ National Park Service
--	---	---	---	---

PNW3
07/21/2024 2255