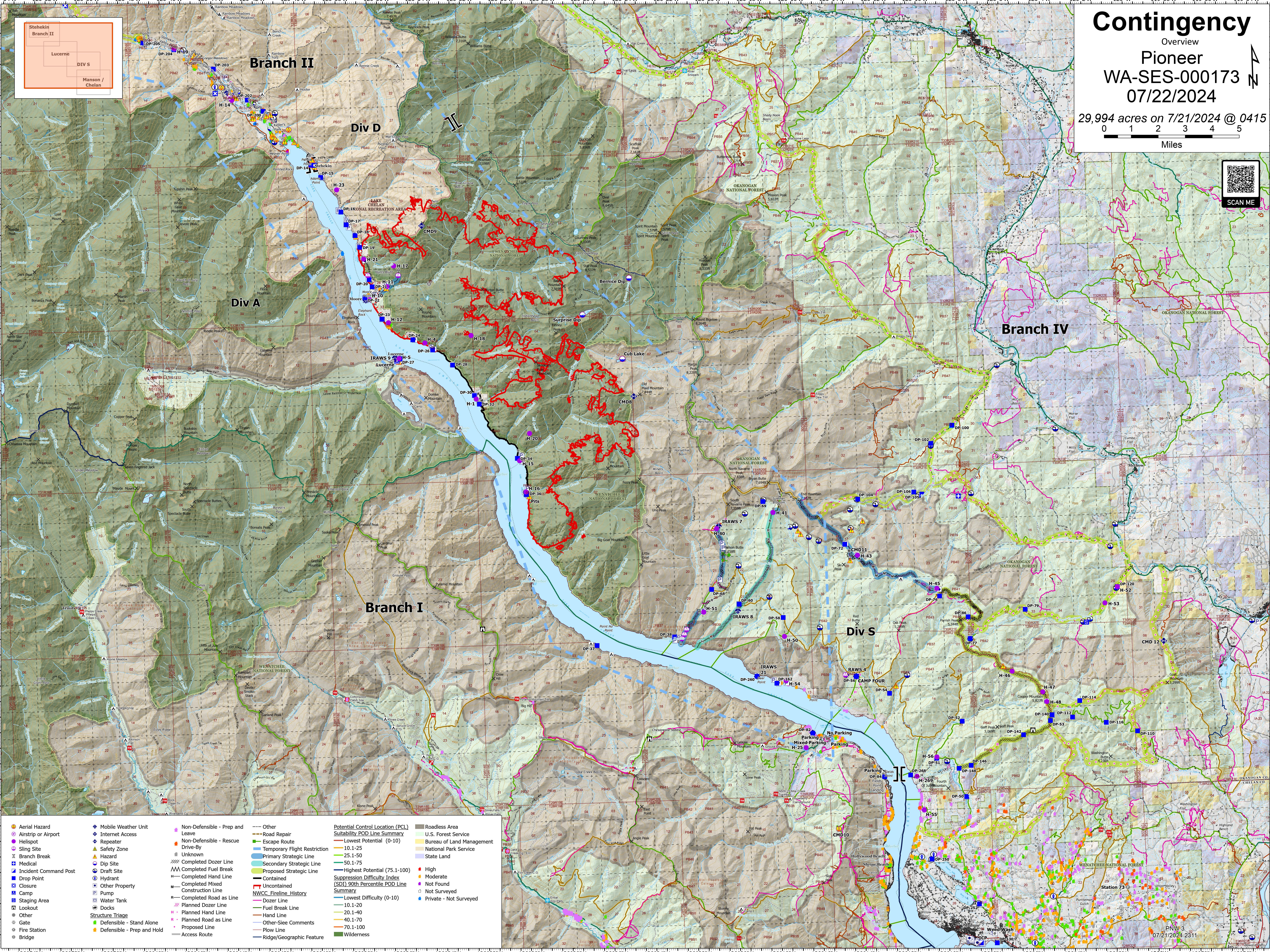
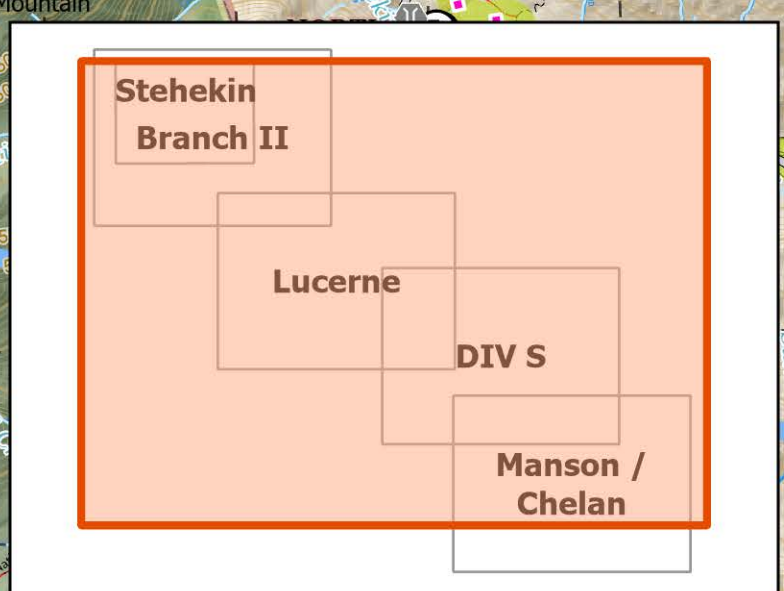


# Contingency

Overview

## Pioneer WA-SES-000173 07/22/2024

29,994 acres on 7/21/2024 @ 0415



- |   |  |  |   |   |  |
|---|--|--|---|---|--|
| <ul style="list-style-type: none"><li>Aerial Hazard</li><li>Airstrip or Airport</li><li>Sling Site</li><li>Branch Break</li><li>Medical</li><li>Incident Command Post</li><li>Drop Point</li><li>Closure</li><li>Camp</li><li>Staging Area</li><li>Lookout</li><li>Other</li><li>Gate</li><li>Fire Station</li><li>Bridge</li></ul> | <ul style="list-style-type: none"><li>Mobile Weather Unit</li><li>Internet Access</li><li>Repeater</li><li>Safety Zone</li><li>Dip Site</li><li>Draft Site</li><li>Hydrant</li><li>Other Property</li><li>Pump</li><li>Water Tank</li><li>Docks</li><li>Structure Triage</li><li>Defensible - Stand Alone</li><li>Defensible - Prep and Hold</li></ul> | <ul style="list-style-type: none"><li>Non-Defensible - Prep and Leave</li><li>Non-Defensible - Rescue</li><li>Drive-By</li><li>Unknown</li><li>Completed Dozer Line</li><li>Completed Fuel Break</li><li>Completed Hand Line</li><li>Completed Mixed Construction Line</li><li>Completed Road as Line</li><li>Planned Dozer Line</li><li>Planned Hand Line</li><li>Planned Road as Line</li><li>Proposed Line</li><li>Access Route</li></ul> | <ul style="list-style-type: none"><li>Other</li><li>Road Repair</li><li>Escape Route</li><li>Temporary Flight Restriction</li><li>Primary Strategic Line</li><li>Secondary Strategic Line</li><li>Proposed Strategic Line</li><li>Contained</li><li>Uncontained</li><li>NWCC Fireline_History</li><li>Dozer Line</li><li>Fuel Break Line</li><li>Hand Line</li><li>Other-Site Comments</li><li>Plow Line</li><li>Ridge/Geographic Feature</li></ul> | <ul style="list-style-type: none"><li>Potential Control Location (PCL) Suitability POD Line Summary</li><li>Lowest Potential (0-10)</li><li>10.1-25</li><li>25.1-50</li><li>50.1-75</li><li>Highest Potential (75.1-100)</li><li>Suppression Difficulty Index (SDI) 90th Percentile POD Line Summary</li><li>Lowest Difficulty (0-10)</li><li>10.1-20</li><li>20.1-40</li><li>40.1-70</li><li>70.1-100</li><li>Wilderness</li></ul> | <ul style="list-style-type: none"><li>Roadless Area</li><li>U.S. Forest Service</li><li>Bureau of Land Management</li><li>National Park Service</li><li>State Land</li><li>High</li><li>Moderate</li><li>Not Found</li><li>Not Surveyed</li><li>Private - Not Surveyed</li></ul> |
|---|--|--|---|---|--|

PNW 3  
07/21/2024 2311