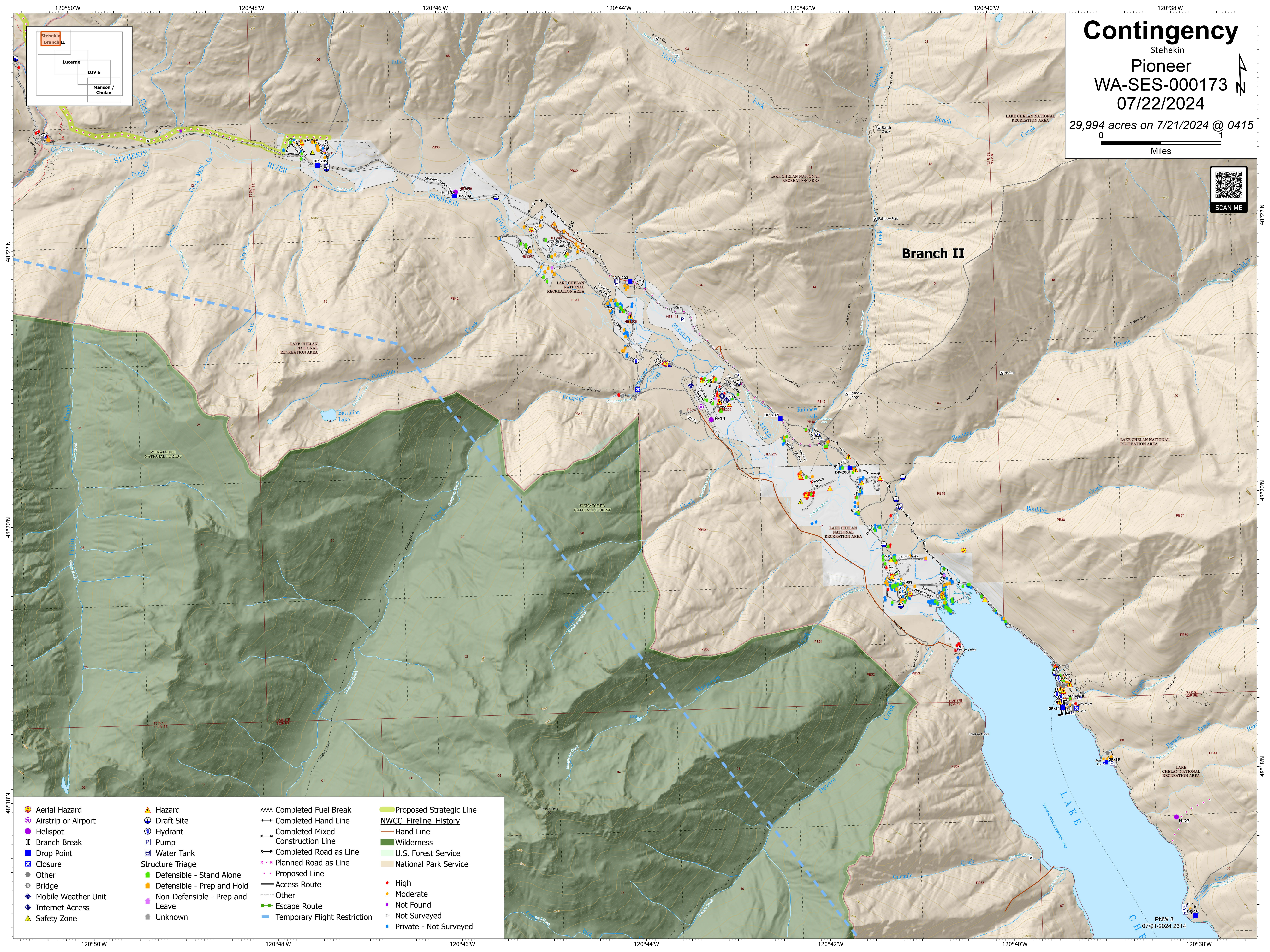
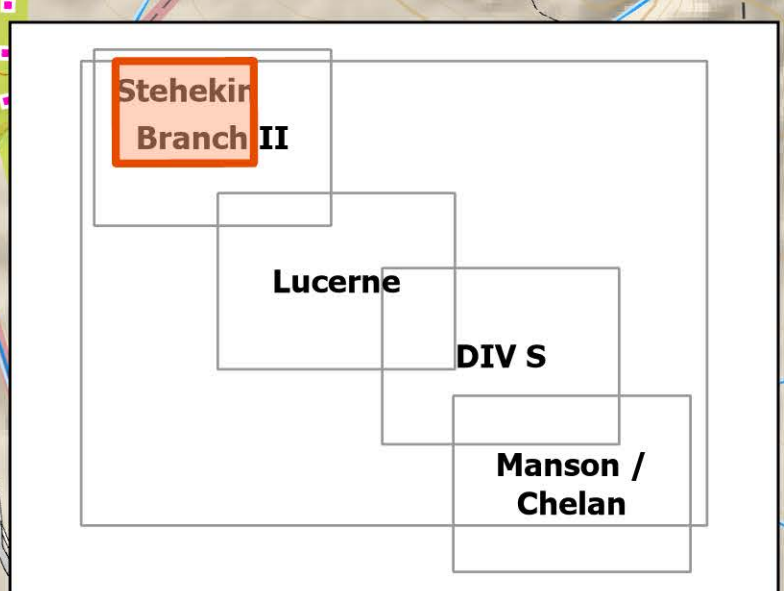


# Contingency

Stehekin  
Pioneer  
WA-SES-000173  
07/22/2024

29,994 acres on 7/21/2024 @ 0415



<ul style="list-style-type: none"><li> Aerial Hazard</li><li> Airstrip or Airport</li><li> Helispot</li><li> Branch Break</li><li> Drop Point</li><li> Closure</li><li> Other</li><li> Bridge</li><li> Mobile Weather Unit</li><li> Internet Access</li><li> Safety Zone</li></ul>	<ul style="list-style-type: none"><li> Hazard</li><li> Draft Site</li><li> Hydrant</li><li> Pump</li><li> Water Tank</li><li><b>Structure Triage</b></li><li> Defensible - Stand Alone</li><li> Defensible - Prep and Hold</li><li> Non-Defensible - Prep and Leave</li><li> Unknown</li></ul>	<ul style="list-style-type: none"><li> Completed Fuel Break</li><li> Completed Hand Line</li><li> Completed Mixed Construction Line</li><li> Completed Road as Line</li><li> Planned Road as Line</li><li> Proposed Line</li><li> Access Route</li><li> Other</li><li> Escape Route</li><li> Temporary Flight Restriction</li></ul>	<ul style="list-style-type: none"><li> Proposed Strategic Line</li><li><b>NWCC Fireline History</b></li><li> Hand Line</li><li> Wilderness</li><li> U.S. Forest Service</li><li> National Park Service</li></ul> <ul style="list-style-type: none"><li> High</li><li> Moderate</li><li> Not Found</li><li> Not Surveyed</li><li> Private - Not Surveyed</li></ul>
--	--	---	---

PNW 3  
07/21/2024 2314