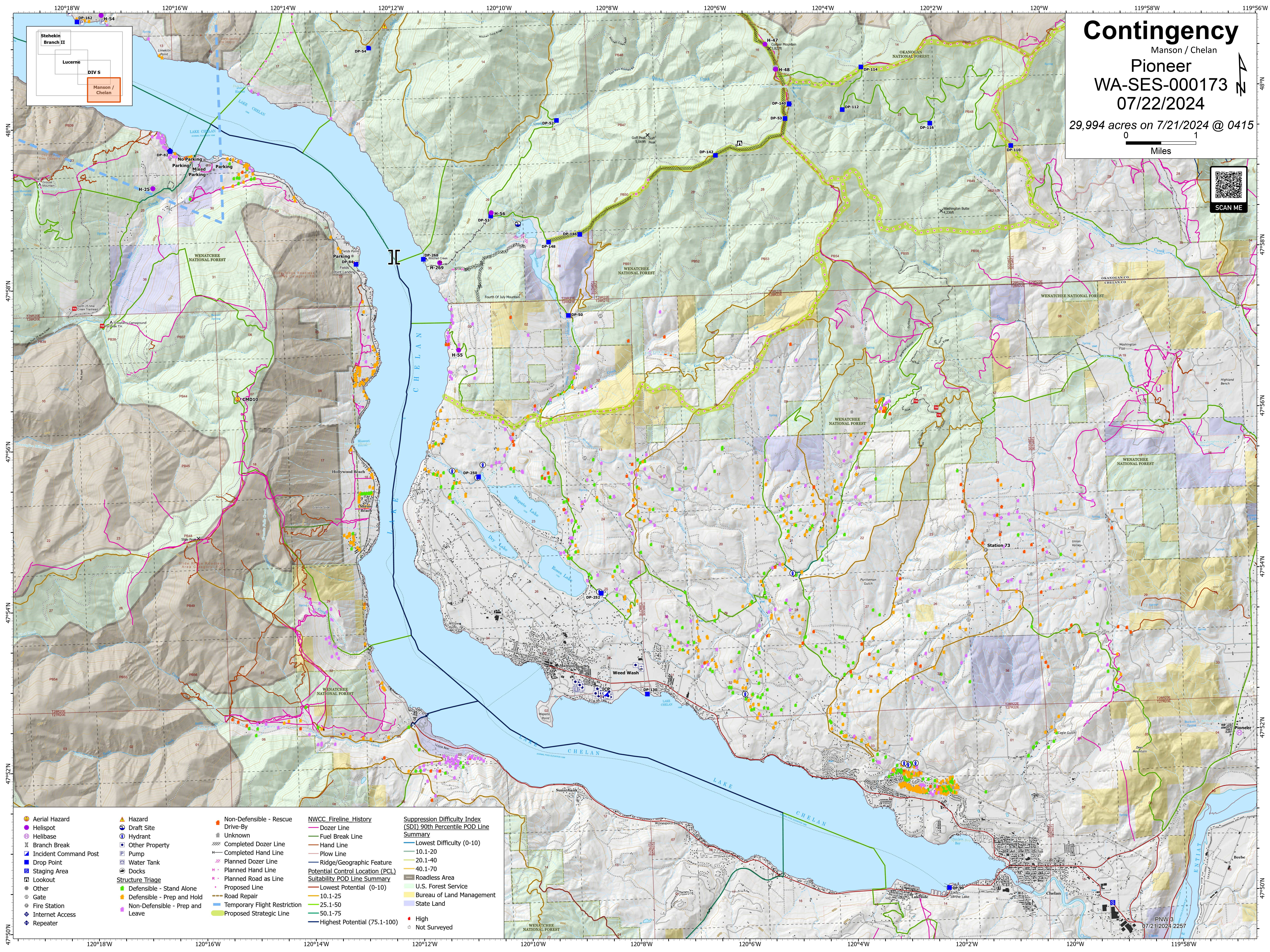
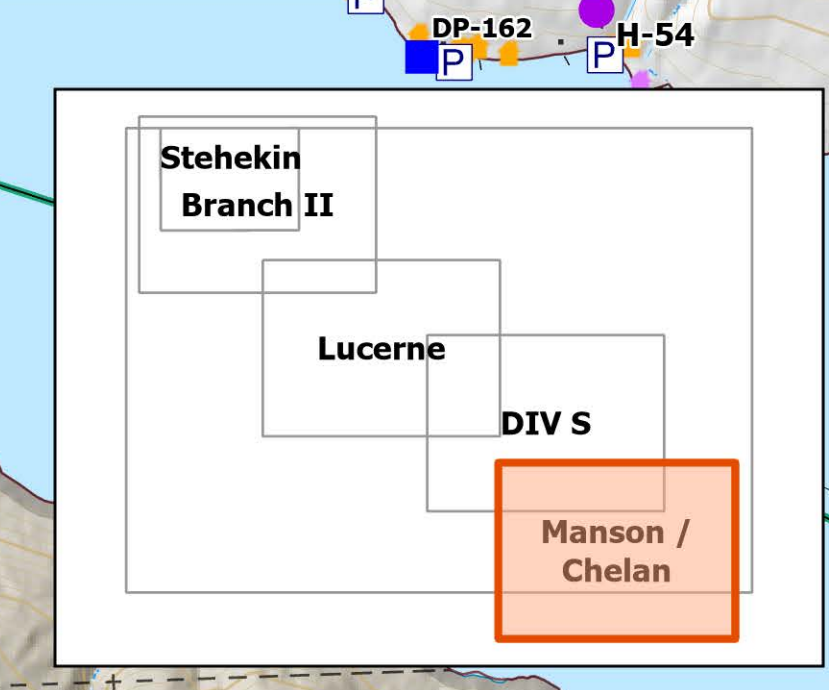


Contingency

Manson / Chelan
Pioneer
WA-SES-000173
07/22/2024

29,994 acres on 7/21/2024 @ 0415

0 1 Miles



- | | | | | |
|---|--|--|--|--|
| <ul style="list-style-type: none">Aerial HazardHelispotHelibaseBranch BreakIncident Command PostDrop PointStaging AreaLookoutOtherGateFire StationInternet AccessRepeater | <ul style="list-style-type: none">HazardDraft SiteHydrantOther PropertyPumpWater TankDocksStructure Triage<ul style="list-style-type: none">Defensible - Stand AloneDefensible - Prep and HoldNon-Defensible - Prep and Leave | <ul style="list-style-type: none">Non-Defensible - Rescue Drive-ByUnknownCompleted Dozer LineCompleted Hand LinePlanned Dozer LinePlanned Hand LinePlanned Road as LineProposed LineRoad RepairTemporary Flight RestrictionProposed Strategic Line | NWCC Fireline History <ul style="list-style-type: none">Dozer LineFuel Break LineHand LinePlow LineRidge/Geographic Feature Potential Control Location (PCL) Suitability POD Line Summary <ul style="list-style-type: none">Lowest Potential (0-10)10.1-2525.1-5050.1-75Highest Potential (75.1-100) | Suppression Difficulty Index (SDI) 90th Percentile POD Line Summary <ul style="list-style-type: none">Lowest Difficulty (0-10)10.1-2020.1-4040.1-70 <ul style="list-style-type: none">Roadless AreaU.S. Forest ServiceBureau of Land ManagementState Land <ul style="list-style-type: none">HighNot Surveyed |
|---|--|--|--|--|