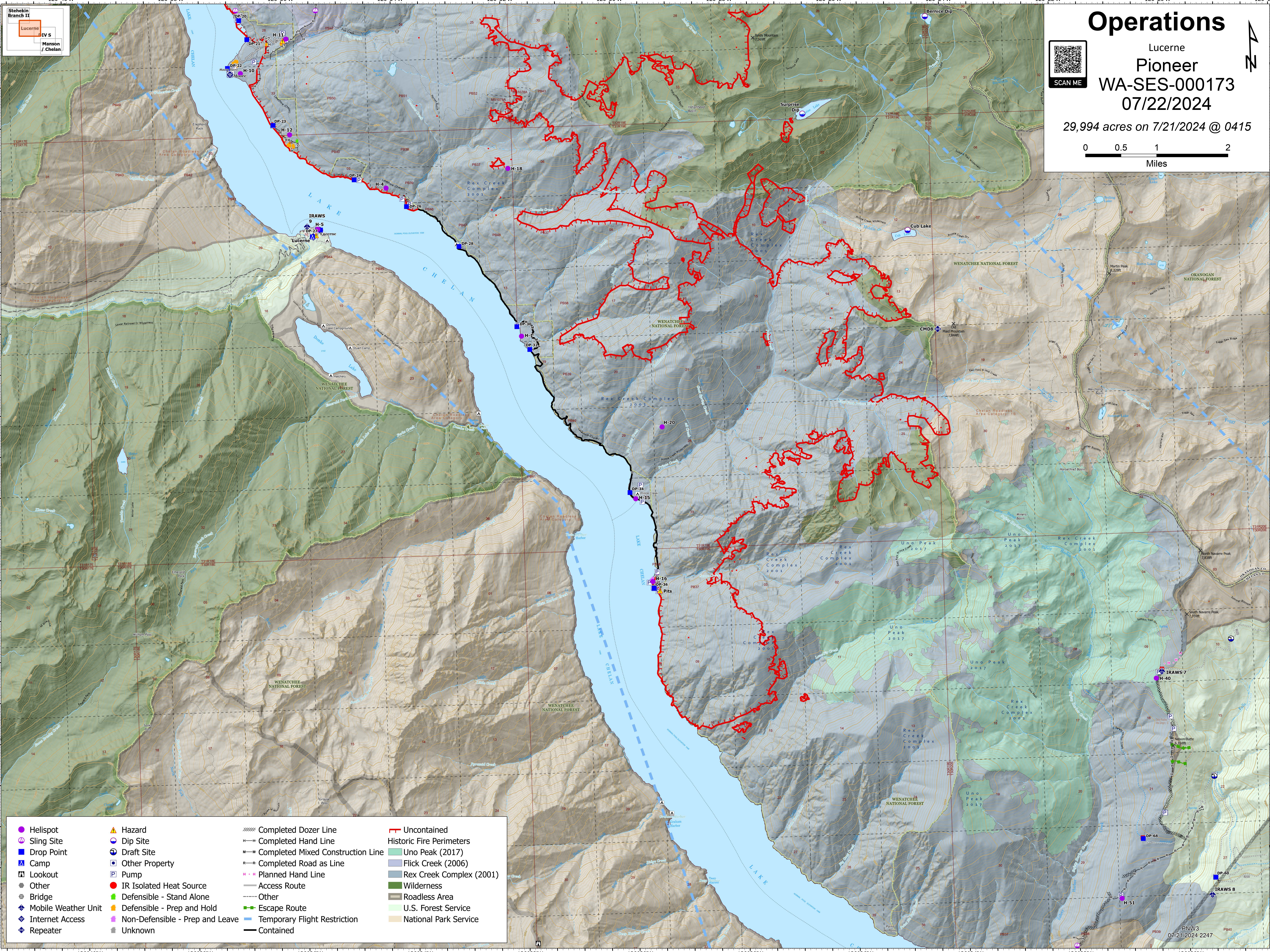
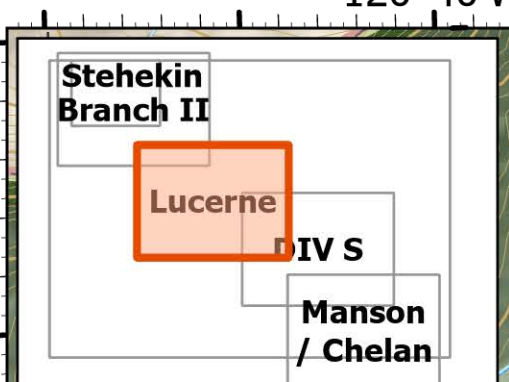
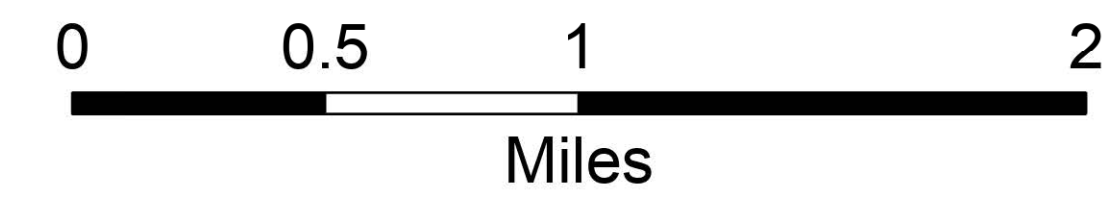


# Operations

Lucerne  
Pioneer  
WA-SES-000173  
07/22/2024

29,994 acres on 7/21/2024 @ 0415



Helispot	Hazard	Completed Dozer Line	Uncontained
Sling Site	Dip Site	Completed Hand Line	Historic Fire Perimeters
Drop Point	Draft Site	Completed Mixed Construction Line	Uno Peak (2017)
Camp	Other Property	Completed Road as Line	Flick Creek (2006)
Lookout	Pump	Planned Hand Line	Rex Creek Complex (2001)
Other	IR Isolated Heat Source	Access Route	Wilderness
Bridge	Defensible - Stand Alone	Other	Roadless Area
Mobile Weather Unit	Defensible - Prep and Hold	Escape Route	U.S. Forest Service
Internet Access	Non-Defensible - Prep and Leave	Temporary Flight Restriction	National Park Service
Repeater	Unknown	Contained	

PNW3  
07/21/2024 2247