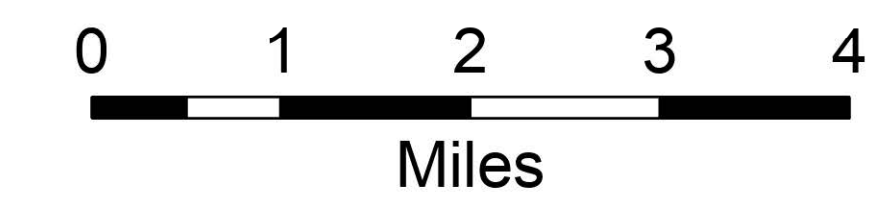


# Transportation Map

Pioneer Fire  
WA-SES-000173  
07/22/2024

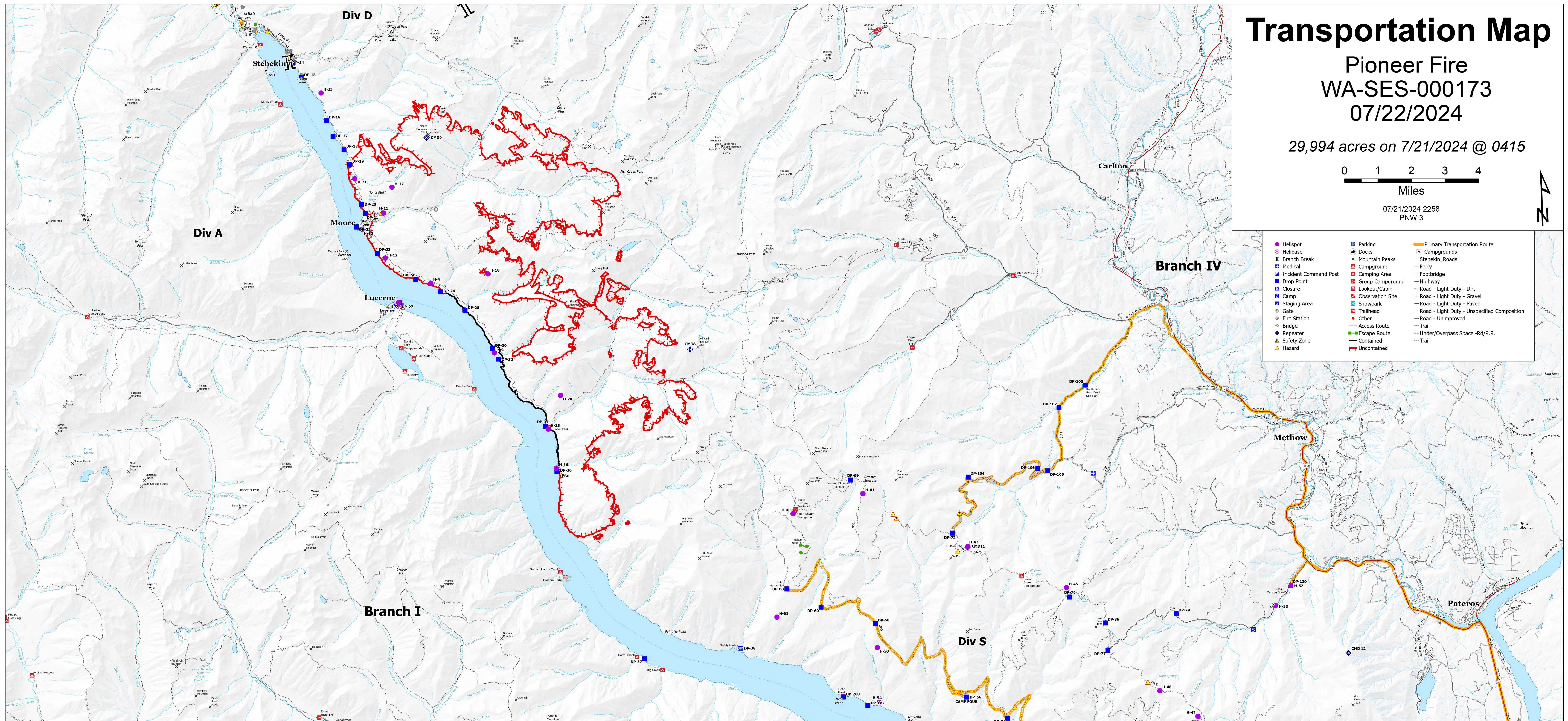
29,994 acres on 7/21/2024 @ 0415



07/21/2024 2258  
PNW 3



● Helipoint	□ Parking	▬ Primary Transportation Route
○ Helibase	⊗ Docks	△ Campgrounds
⊗ Branch Break	⊗ Mountain Peaks	— Stehekin_Roads
⊗ Medical	⊗ Campground	— Ferry
⊗ Incident Command Post	⊗ Camping Area	— Footbridge
⊗ Drop Point	⊗ Group Campground	— Highway
⊗ Closure	⊗ Lookout/Cabin	— Road - Light Duty - Dirt
⊗ Camp	⊗ Observation Site	— Road - Light Duty - Gravel
⊗ Staging Area	⊗ Snowpark	— Road - Light Duty - Paved
⊗ Gate	⊗ Trailhead	— Road - Light Duty - Unspecified Composition
⊗ Fire Station	⊗ Other	— Road - Unimproved
⊗ Bridge	⊗ Access Route	— Trail
⊗ Repeater	⊗ Escape Route	— Under/Overpass Space -Rd/R.R.
⊗ Safety Zone	⊗ Contained	— Trail
⊗ Hazard	⊗ Uncontained	



FC Point Type	Label	Comments	Latitude WGS84	Longitude WGS84	FC Point Type	Label	Comments	Latitude WGS84	Longitude WGS84
Camp	CAMP FOUR		48° 01.447' N	120° 14.064' W	Drop Point	DP-68	DP 68	48° 04.407' N	120° 20.789' W
Camp	Lucerne		48° 12.071' N	120° 35.550' W	Drop Point	DP-69	69	48° 07.175' N	120° 18.185' W
Drop Point	DP-100	DP100	48° 09.413' N	120° 08.973' W	Drop Point	DP-72	72	48° 05.707' N	120° 14.329' W
Drop Point	DP-102	DP102	48° 08.852' N	120° 10.024' W	Drop Point	DP-76	76	48° 03.939' N	120° 09.871' W
Drop Point	DP-104	DP104/ draft site being pulled	48° 07.143' N	120° 13.630' W	Drop Point	DP-77		48° 02.528' N	120° 08.480' W
Drop Point	DP-105	proposed DP	48° 07.230' N	120° 10.545' W	Drop Point	DP-79		48° 03.406' N	120° 05.789' W
Drop Point	DP-106	proposed DP	48° 07.305' N	120° 10.924' W	Drop Point	DP-82	82	47° 59.669' N	120° 16.182' W
Drop Point	DP-110	Proposed DP	47° 59.356' N	120° 00.623' W	Drop Point	DP-84	84	47° 58.183' N	120° 12.817' W
Drop Point	DP-112	Proposed DP	47° 59.882' N	120° 03.715' W	Drop Point	DP-86	HELWELL location	48° 03.234' N	120° 08.538' W
Drop Point	DP-114	Drop Point	48° 00.402' N	120° 03.339' W	Drop Point	DP-90	90	47° 50.162' N	120° 02.284' W
Drop Point	DP-116	Good option for closer medic	47° 59.672' N	120° 02.105' W	Hazard	DP-58	Exposed culvert	48° 06.497' N	120° 13.469' W
Drop Point	DP-120	Black Canyon Snow Park	48° 04.021' N	120° 01.323' W	Hazard	DP-59	Watercrossing, tight and	48° 06.219' N	120° 14.021' W
Drop Point	DP-130	per operations	47° 52.709' N	120° 07.723' W	Hazard	DP-60	Culvert collapse, downslope	48° 06.144' N	120° 16.462' W
Drop Point	DP-14	DP 14	48° 16.471' N	120° 39.402' W	Hazard	DP-62	Culvert failure, Downslope side	48° 06.253' N	120° 16.588' W
Drop Point	DP-140	Drop point 140	47° 59.977' N	120° 04.696' W	Hazard	DP-64	Cattle guard filled in with	48° 05.244' N	120° 14.133' W
Drop Point	DP-142	Drop point 142	47° 59.373' N	120° 06.093' W	Hazard	DP-66	Partial road collapse- rotten	48° 01.154' N	120° 12.142' W
Drop Point	DP-146	Drop point 146, would need to	47° 58.453' N	120° 08.656' W	Hazard	DP-68	Old well	48° 12.112' N	120° 35.497' W
Drop Point	DP-148	Drop point 148	47° 58.372' N	120° 09.239' W	Hazard	DP-70	Electrical hazard.	48° 18.625' N	120° 39.428' W
Drop Point	DP-15	DP 15	48° 18.067' N	120° 38.954' W	Hazard	DP-72	Flammable lockers. Including	48° 18.605' N	120° 39.396' W
Drop Point	DP-16	DP 16	48° 16.934' N	120° 38.030' W	Hazard	DP-74	Gas Fuel Pump	48° 18.528' N	120° 39.442' W
Drop Point	DP-162	*please change from 162-262	48° 01.318' N	120° 17.821' W	Hazard	DP-76	Two explosives storage cubes in	48° 20.126' N	120° 41.868' W
Drop Point	DP-17	DP 17	48° 16.521' N	120° 37.792' W	Hazard	DP-78	Business in valley that sells	48° 19.596' N	120° 41.228' W
Drop Point	DP-18	DP 18	48° 16.162' N	120° 37.381' W	Hazard	DP-80	Building Contains 55 Gal. drum of	48° 19.475' N	120° 41.222' W
Drop Point	DP-19	DP 19	48° 15.781' N	120° 37.177' W	Hazard	DP-82	Hypochlorite Solution( IRG		
Drop Point	DP-20	DP 20	48° 14.734' N	120° 36.772' W	Hazard	DP-84	154, UN 1791). If compromised		
Drop Point	DP-200	add drop point	48° 20.255' N	120° 41.638' W	Hazard	DP-86	by fire, isolate at least 1/2 mile		
Drop Point	DP-202	add drop point	48° 20.630' N	120° 42.378' W	Hazard	DP-88	radius from location.		
Drop Point	DP-203	add drop point	48° 21.657' N	120° 43.967' W	Hazard	DP-90			
Drop Point	DP-204	add drop point	48° 22.316' N	120° 45.852' W	Hazard	DP-92	55gal barrel of hypochlorite	48° 20.777' N	120° 43.042' W
Drop Point	DP-205	add drop point	48° 22.565' N	120° 47.332' W	Hazard	DP-94	55gal barrel of hypochlorite	48° 20.937' N	120° 43.222' W
Drop Point	DP-21	21	48° 14.499' N	120° 36.635' W	Hazard	DP-96	55gal barrel of hypochlorite	48° 20.214' N	120° 42.178' W
Drop Point	DP-22	DP 22	48° 14.156' N	120° 37.004' W	Hazard	DP-98	Diesel tank north of new school	48° 20.256' N	120° 41.586' W
Drop Point	DP-23	DP 23	48° 13.446' N	120° 36.206' W	Hazard	DP-100	Two unlabeled fuel tanks with	48° 19.325' N	120° 40.677' W
Drop Point	DP-24	DP 24	48° 12.751' N	120° 34.758' W	Hazard	DP-102	55gal barrel of hypochlorite	48° 21.416' N	120° 43.982' W
Drop Point	DP-250	DP 250	47° 55.485' N	120° 10.695' W	Hazard	DP-104	Fuel tank	48° 14.494' N	120° 35.996' W
Drop Point	DP-252	DP 252	47° 53.984' N	120° 08.507' W	Hazard	DP-106	REAF Rickleff. Bee nest. Flaggded	48° 20.189' N	120° 41.320' W
Drop Point	DP-26	DP 26	48° 12.405' N	120° 33.820' W	Hazard	DP-108	Cow pens. Do not cross pink	48° 20.759' N	120° 42.937' W
Drop Point	DP-260	Drop Point 260	48° 01.563' N	120° 18.762' W	Hazard	DP-110	Propane Tank	48° 20.160' N	120° 41.520' W
Drop Point	DP-268	Drop Point 268	47° 58.215' N	120° 11.569' W	Hazard	DP-112	1000-gallon Diesel tank for	48° 18.652' N	120° 39.323' W
Drop Point	DP-27	DP 27	48° 12.152' N	120° 35.400' W	Hazard	DP-114	Bees Nests	48° 16.186' N	120° 37.372' W
Drop Point	DP-28	DP 28	48° 11.899' N	120° 32.887' W	Hazard	DP-116	Large diesel tank Propane tank	48° 18.656' N	120° 39.329' W
Drop Point	DP-30	DP 30	48° 10.898' N	120° 31.879' W	Hazard	DP-118	Very large buried propane tank.	48° 18.469' N	120° 39.264' W
Drop Point	DP-32	DP 32 - high quality Dock	48° 10.615' N	120° 31.657' W	Hazard	DP-120	REAF Rickleff. 6 snags that	48° 20.759' N	120° 42.937' W
Drop Point	DP-34	DP 34	48° 08.832' N	120° 29.915' W	Hazard	DP-122	fuel tank	48° 15.844' N	120° 37.242' W
Drop Point	DP-36	DP 36	48° 07.657' N	120° 29.532' W	Hazard	DP-124	REAF Rickleff. YOUNG pacific	48° 20.354' N	120° 41.658' W
Drop Point	DP-37	DP 37	48° 02.725' N	120° 26.376' W	Hazard	DP-126	Barbed wire on ground, 20'	48° 22.753' N	120° 47.363' W
Drop Point	DP-38	DP 38	48° 02.917' N	120° 22.648' W	Hazard	DP-128	2 Fuel, propane tanks behind	48° 22.751' N	120° 47.502' W
Drop Point	DP-50	Wind dependent	47° 57.449' N	120° 08.925' W	Hazard	DP-130	Barbed wire, flagged with READ	48° 18.704' N	120° 39.388' W
Drop Point	DP-51	DP 51	47° 58.722' N	120° 10.294' W	Hazard	DP-132	2 1200 gallon propane tanks in	48° 20.223' N	120° 42.188' W
Drop Point	DP-52	Drop Point 52	47° 59.880' N	120° 09.011' W	Hazard	DP-134	REAF Rickleff. In historic well	48° 20.082' N	120° 42.130' W
Drop Point	DP-53	Potential drop point.. At the	47° 59.798' N	120° 04.780' W	Hazard	DP-136	Open test pits (2)	48° 07.649' N	120° 29.438' W
Drop Point	DP-54	DP 54, moved DP 56 to camp	48° 00.864' N	120° 12.439' W	Hazard	DP-138	Chelan Rodeo Grounds, 1099 N	47° 52.730' N	120° 08.487' W
Drop Point	DP-56	Camp four below the 8200 RD.	48° 01.448' N	120° 14.002' W	Incident Command Post	DP-140	proposed Medevac Site. needs	48° 07.126' N	120° 08.794' W
Drop Point	DP-58	DP 58	48° 03.427' N	120° 17.408' W	Medical	DP-142	Weed wash and Staging	47° 49.900' N	119° 59.347' W
Drop Point	DP-60	DP 60	48° 03.906' N	120° 19.496' W	Staging Area	DP-144	no lowboys. suitable for crew	48° 02.921' N	120° 03.053' W

