

Pioneer Incident Action Plan

Wednesday June 12, 2024

Morning Radio Briefing: 0700

Operational Period: 0600-2200

WA-SES-000173

USFS PNRZ79 (1522) - DOI RZ79 - DNR 221-LDW



MAPS-IAP-Check-In



Health & Safety Message

Incident Transition

- Life First: Stop, Think, Talk, and Then Act.
 - Is the gain worth the risk?
- Review Current Plans, Tactics, and Strategies.
- Know whom you are working for, and who is working for you.
- If you don't know or are unsure.... ASK!
- Establish and Ensure Proper Communications/ Briefings.
- Review Communications Plan.
 - Ensure that your radios are correctly programmed.
 - Test frequencies to ensure adequate coverage.
 - Report poor radio coverage to your supervisor.
- Review of Medical Plan and Procedures.
 - Review and brief your personnel.
 - Where are the closest medical personnel and equipment?
 - Where is the closest Medivac Site?
- Establish and Maintain Situational Awareness and LCES!

Notes

	Ground	Air
FS:		
DNR:		
OSC:		
FS AA		
DNR AA:		

COPYRIGHTED

FINANCE MESSAGE

Finance Email: 2024.pioneer.finance@firenet.gov

Finance Phones: Equipment (208) 891-6877 & TIME (208) 891-8036

This incident requires electronic documentation. Please email your time to the Finance email address daily. Finance documents required upon check in are:

Required Documents

Overhead, Agency Crews & Cooperators	Contract Resources
Check-in docs needed: Resource Order, Manifest, Cooperative Agreement, Casual Hire Form w/ECI# (as applicable)	Check-in docs needed: Resource Order, Manifest, Full Contract/Agreement, Certifications <i>(If required)</i> Pre-Inspection
Daily: CTRs, Shift Tickets	Daily: CTRs, Shift Tickets, receipts (claims, etc.)
Demob: Signed OF-288; Signed OF-286	Demob: Contractor Evaluations, Shift Tickets, receipt(s) for Addition/Deductions, Post-Inspection, Signed OF-286

Additional Incident Information (to be added to your Shift Ticket or CTR)

Incident Name: **Pioneer**

Incident Number: **WA-SES-000173**

Financial codes:

WA DNR – **221-LDW**

DOI – **RZ79**

USDA – **PNRZ79 (1522)**

THANK YOU!!

CHECK-IN

Please complete the virtual check-in process via the QR code on the front cover.

You are not checked in until you provide the following:

- Red Cards
- Roster/Manifest

Please email documents to:

2024.pioneer.demob@firenet.gov

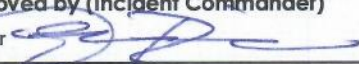
DEMOB

Fliers complete the “Air Travel Request” via the QR code on the front cover 72 hours prior to flight date.

- Return supplies to the Cache
- Return radios, antennas, etc., to Communications
- Contact Finance about closing out your paperwork

Once the above items have been completed, SCAN the QR code on the front cover and complete the demob questions.

If you have any questions about Check-In or DEMOB please email demob at 2024.pioneer.demob@firenet.gov. Please include your request number in the subject line when emailing.

INCIDENT OBJECTIVES	1. Incident Name Pioneer	2. Date June 11, 2024	3. Time 2000
4. Operational Period: 06/12-0600-2200			
5. General Objectives: Implement suppression strategies/objectives for short-term and long-term incident planning. <ul style="list-style-type: none"> • Provide for firefighter and public safety through hazard identification and application of a shared risk management process. • Coordinate public information to provide timely updates to agency partners, cooperators, and the public. • Coordinate suppression activities with READs to identify impacts on the landscape. • Effectively manage and track costs with daily IAP reporting. • Coordinate with agency leadership/administrators to ensure effective and efficient management of firefighting resources. Operational objectives: <ul style="list-style-type: none"> • Implement a point protection strategy for current infrastructure on private lands and triage additional infrastructure within fire planning area. • Minimize fire impact on private lands. • Evaluate current fire conditions, identify/utilize features that could lead to fire growth, and validate strategic indirect (new/historical) control lines. • Develop a long-term strategic plan for suppression of the incident. • Utilize appropriate tactics for current/future fire environment and predominantly wilderness landscape . 			
5a. Incident Requirements <ul style="list-style-type: none"> • Provide Agency Administrator updates and briefings on incident status. • Firefighting operations will implement tactics that offer the highest probability of success to minimize impacts to the landscape and minimize unnecessary exposure to firefighters. • Incident values are firefighter and public safety, critical infrastructure, private land and natural resources. 			
5b. Leaders Intent <ul style="list-style-type: none"> • Safety: Firefighter, public, boat and aviation safety will be addressed through DRA process. • ISAP: Engage agencies with strategic alignment process, for shared values at risk. • Communication: Keep Agency Administrators and firefighters informed of strategic actions, accomplishments, and challenges. • Operations: Make informed strategic/tactical decisions suppressing the fire in the right geographic locations with the appropriate resources and highest probability of success. • Stakeholders: Collaborate with local partners, officials, and landowners to provide situational updates pertinent to the fire. • Logistics: Provide support ensuring food, water, and shelter for incident responders. • Human Resources: Ensure that all incident personnel are treated with dignity and respect, while having zero tolerance for harassment, alcohol, or illegal drug use. • Public Information: Provide timely and accurate information through media outlets, briefings, and social platforms as needed. • Finance: Monitor and communicate incident cost associated with meeting incident objectives. • Planning: Provide incident documentation, resource tracking, and meeting management. 			
6. Weather Forecast & General Safety Message for Period – See Attached			
7. Attachments (mark if attached)			
<input checked="" type="checkbox"/> Organization List - ICS 203	<input checked="" type="checkbox"/> Weather Forecast	<input checked="" type="checkbox"/> Safety Message	
<input checked="" type="checkbox"/> Div. Assignment Lists - ICS204	<input checked="" type="checkbox"/> Fire Behavior Forecast	<input type="checkbox"/> Medical Emergency Com Plan	
<input checked="" type="checkbox"/> Communications Plan - ICS 205	<input checked="" type="checkbox"/> Incident Map	<input type="checkbox"/>	
<input checked="" type="checkbox"/> Medical Plan - ICS 206	<input checked="" type="checkbox"/> Air Operations - ICS 220	<input type="checkbox"/>	
9. Prepared by Aileen Nichols	9. Approved by (Incident Commander) Eric Riener 		

ORGANIZATION ASSIGNMENT LIST	
1. Incident Name Pioneer	
2. Date June 11, 2024	3. Time 1830
4. Operational Period June 12, 2024 0600-2200	
Position	Name
NWIMT 13 LWD 6/24/2024	
5. Incident Commander and Staff	
Incident Commander	Brian Gales (O-8.1)
Deputy Incident Commander	Eric Riener (O-8.2)
Liaison Officer	Bill Neckels (O-8.3)
ISAP	Robert Burnside (O-14)
Information Officer	Eric Waters (O-8.5)
Safety Officer	Ray Hershey (O-8.4)
6. Agency/Organization Representative(s):	
USFS Oak/Wen Agency Administrator	Kari Grover-Wier
USFS Oak/Wen Agency Administrator - †	Paul Willard
DNR Agency Administrator	Larry Leach
DNR Deputy Agency Administrator	Wyatt Leighton
LEAD READ	Brigitte Ranne
REAF - †	Hector Rodriguez
7. Planning Section	
Plans Chief	Aileen Nichols (O-8.14)
Resources Unit	Meredith Butcher (O-8.15)
Status Check-In/ Demob Unit	Laura Backlund (O-8.20)
Situation Unit	Laurie Bergvall (O-8.18)
Fire Behavior Analyst	Dean Warner (O-8.19)
Incident Meteorologist	
GIS Specialist	Kayla Fermin (O-8.16)
Computer Specialist	Dave Johnson (O-8.17)
Computer Specialist	George Jenkins (O-64)
8. Logistics Section	
Logistics Chief	Bryan Swanberg (O-8.22)
Deputy Logistics Chief	Cindy Preston (O-8.21)
Deputy Logistics Chief	Dave Willis (O-8.23)
Supply Unit Leader	Jon Byerly (O-8.25)
Ordering Manager	Robert Yarnall (O-8.30)
Communications Unit Ldr - †	Bruce Hanna (O-8.27)
Incident Comm Mgr	Catherina Contreras (O-8.31)
Com Tech	Brain Wolfenburger (O-8.32)
Food Unit Leader	Pat Young (O-8.26)
Facilities Unit Leader	Keith Yonaka (O-8.24)
Medical Unit Leader	James Brown (O-8.28)
Ground Support Unit	William Braddy (O-8.29)
Receiving/Distribution Mgr	Karl Peterson (O-31)
Base Camp Manager	Carl Schilter (O-12)
Security Manager	Chris Dodds (O-11)

9. Operations Section	
Operations (Field)	John Spencer (O-8.6) Whitney Machado - † (O-8.41)
Operations (Planning)	Tom Hall (O-13)
a. Branch I	
Branch Director	Matt James (O-15)
Division Supervisor	A Unstaffed
Division Supervisor	Z Robert Boles (O-8.13) Pat Chism - † (O-26)
Group Supervisor	Structure Charlie Cronk (O-24) Chris Ramiskey - † (O-27)
b. Branch II	
Branch Director	Spencer Gregory (O-16)
Division Supervisor	S Annalee Graves (O-8.10)
Group Supervisor	Roads Jesse Stone (O-8.12) Aaron Bruning - †
c.	
d. Air Operations Branch	
Air Operations	Nancy Barker (O-8.8) Callen Wilkins - † (O-17)
Air Support Group	Jesse Machado - † (O-38)
Helibase Manager	David Kessler - † (O-39)
10. Finance Section	
Finance Chief	Veronika Klukas (O-8.33)
Deputy Finance Chief	Paula James (O-8.34)
Cost Unit - Virtual	Lori Price (O-8.35)
Time Unit	Angie Chapman (O-8.36)
Personnel Time Recorder	Heather Fitzpatrick (O-8.38)
Proc Unit Leader	Eric Soto (O-8.37)
COMPS/CLAIMS	Laurette Gaylord (O-45)
Incident Cont. Project Insp	Stan Zazado (O-8.39)
In-Box Manager	Emily Cohn (O-46)
PREPARED BY: Meredith Butcher	

PIONEER Spot Forecast - NW CIMT 13 - NWS Service Spokane WA

.DISCUSSION...

Winds will be noticeably less today.
The atmosphere behind the dry cold front will remain dry with minimum humidities near 25 percent through Thursday and possibly into Friday. Another dry cold front on Friday will bring breezy winds Friday afternoon. There will be slim shower chances Saturday to Monday as well, but the risk is only around 20%

.WEDNESDAY...

Sky/weather.....Sunny.
CWR.....0 percent.
LAL.....1.
Max temperature.....69.
Min humidity.....26 percent.
Wind (20 ft).....Northwest winds 3 to 7 mph.
Mixing height.....7500 ft AGL.
Transport winds.....Northwest 11 to 12 mph
Haines Index.....4 Low.

.WEDNESDAY NIGHT...

Sky/weather.....Mostly clear.
CWR.....0 percent.
LAL.....1.
Min temperature.....Around 48.
Max humidity.....48 percent.
Wind (20 ft).....Northwest winds 5 to 9 mph.
Mixing height.....500 ft AGL.
Transport winds.....Northwest 9 to 13 mph.
Haines Index.....4 Low.

.THURSDAY...

Sky/weather.....Sunny then becoming partly sunny.
CWR.....0 percent.
LAL.....1.
Max temperature.....75.
Min humidity.....27 percent.
Wind (20 ft).....North winds around 5 mph in the morning
becoming upslope 5 to 10 in the afternoon
Mixing height.....8000 ft AGL.
Transport winds.....Northeast around 6 mph shifting to the south
around 10 mph in the afternoon.
Haines Index.....4 Low.

Fire Behavior Forecast # 1

Name of Incident: Pioneer Fire WA-SES-000173	Administrative Unit: SE Region DNR / Okanagan-Wenatchee NF
Date & Time Issued: 1900 – 6/11/2024	Operational Period: Day 6/12/2024

FBAN: Dean Warner	Signed:
-----------------------------	----------------

Weather Summary - See attached Spot Weather Forecast.
 Sunny and dry with seasonal average temperatures.

Fire Behavior Summary

General – Max. spot distance: 0.2 mi. Probability of Ignition: 50% Haines Index: 4 (low) LAL: 1 ERC – Y: 40 (73 percentile)	FUEL MODEL	Maximum ROS	Backing ROS	Maximum Flame length	Backing Flame length
	GR2 - Moderate load grass shrub	4 ch/hr	½ ch/hr	1 feet	1 feet
	SH2 - Moderate load shrub	2 ch/hr	½ ch/hr	2 feet	1 feet
	TU5 – Very high load timber shrub	10 ch/hr	½ ch/hr	8 feet	2 feet
	TL8 – Long needle timber litter	8 ch/hr	½ ch/hr	4 feet	1 feet

General: The fire will remain active today. Greener fuels above 2500 feet may tend to limit fire growth. Over all fire movement will be up hill to the northeast and to the south into Rex Creek. If spotting develops, maximum distance is not likely to exceed 2 tenths of a mile.

Fuels: The fire is burning in the old Rex Creek burn scar from 2001. This 23 year old fire scar has left behind a mosaic of fuels including a moderate load of heavy fuel, which is dry enough to sustain fire spread. Timber stringers in valleys and draws tend to contain concentrations of available fuel. Rock outcrops can sever the fuel continuity but dry grass and sparse dead and downed material in rocky areas can still maintain fire movement.

Topography: This fire lies on the north slopes of the lake providing a very dry south and west aspect. Steep rugged terrain dominates the fire environment. Rolling material and short upslope runs will pose a significant safety risk. Several natural barriers in the form of rock outcrops and scree slopes are present in the fire area. Evaluate natural barriers for absolute lack of fuel prior to utilizing as a containment feature. Expect slope reversals to be more dramatic than usual as this type of fire movement will present in severe contrast from backing rates of spread (ROS).

Seasonality: Given the time of year, live fuels remain green and will tend to keep ROS and flame lengths from being overly active.

ERC: Due to the time of year, Energy Release Component values remain below the 90th percentile. The dry aspect, lake winds, and steep slopes offer ample opportunity for this fire to remain active.

Air Ops/Smoke Dispersion

Smoke from active fire may impact visibility for air operations; otherwise no impacts are expected.

Safety

Watch for slope reversals. All line resources, lookouts especially, need to know where the fire is on the landscape and the potential for slope reversals to occur. Know your escape routes and safety zones to avoid any sudden changes caused by slope reversals.

DIVISION ASSIGNMENT LIST			1. Branch I		2. Division A	
3. Incident Name Pioneer			4. Operational Period Date: 06/12/2024 Time: 0600-2200			
5. Operations Personnel						
Operations Chief		John Spencer Whitney Machado - t		Branch Director		Matt James
Safety Officer		Ray Hershey		Division Supervisor		Unstaffed
6. Resources Assigned this Period						
Strike Team/Task Force/Resource Designator		Leader	# Persons	LWD	Drop Off PT./Time	Pick Up PT./Time
1						
2						
3						
4						
5						
6						
7						
8						
9						
10						
11						
12						
13						
14						
15						
16						
17						
18						
19						
20						
21						
22						
23						
24						
		Meal count				
7. Control Operations: Task: Purpose: End state:						
8. Special Instructions:						
9. Division/Group Communication Summary						
See Communications Plan						
Prepared by (Resource Unit Ldr) <i>Meredith Butcher</i>			Approved by (Planning Sect. Ch.) <i>Aileen Nichols</i>		Date 06/11/2024	Time 2000

DIVISION ASSIGNMENT LIST			1. Branch I		2. Division Z	
3. Incident Name Pioneer			4. Operational Period Date: 06/12/2024 Time: 0600-2200			
5. Operations Personnel						
Operations Chief		John Spencer Whitney Machado - t		Branch Director		Matt James
Safety Officer		Ray Hershey		Division Supervisor		Robert Boles Pat Chism - t
6. Resources Assigned this Period						
Strike Team/Task Force/Resource Designator		Leader	# Persons	LWD	Drop Off PT./Time	Pick Up PT./Time
1	C-3 CRW1 Baker River IHC	Chicks	23			
2	C-4 CRW1 LaGrande IHC	Elquezabal	21			
3	Chelan/Entiat Crew 22/52	Boots	15	6/12		
4						
5	O-41 WFM1 Eagle Cap	Gabe Hale	10			
6						
7						
8						
9						
10						
11						
12						
13						
14						
15						
16						
17						
18						
19						
20						
		Meal count	69			
7. Control Operations: Task: Contain fire spread to the southwest where terrain and fuels allow for high probability of success. Assess fire perimeter progression to the west/southwest at higher elevations. Purpose: To contain the fire where we have high probability of success and to monitor the fire's progression. End state: Fire is contained in the southwest and location of uncontained fire perimeter is known.						
8. Special Instructions: 24, 48, 72 hour planning/logistical support will be paramount to our success.						
9. Division/Group Communication Summary See Communications Plan						
Prepared by (Resource Unit Ldr) <i>Meredith Butcher</i>		Approved by (Planning Sect. Ch.) <i>Aileen Nichols</i>		Date 06/11/2024	Time 2000	

DIVISION ASSIGNMENT LIST			1. Branch I		2. Group Structure	
3. Incident Name Pioneer			4. Operational Period Date: 06/12/2024 Time: 0600-2200			
5. Operations Personnel						
Operations Chief		John Spencer Whitney Machado - t		Branch Director		Matt James
Safety Officer		Ray Hershey		Division Supervisor		Charlie Cronk Chris Ramiskey - t
6. Resources Assigned this Period						
Strike Team/Task Force/Resource Designator		Leader	# Persons	LWD	Drop Off PT./Time	Pick Up PT./Time
1	C-1 CRW2 DNR Crew 411	Lyle	16			
2	C-2 CR2I Wenatchee River C74	Marquart	13			
3						
4	O-20 TFLD-t Boat Coordinator	Katy Giddings	1			
5						
6	EMTB	Granburg	1			
7	O-43 REMS 1	Caitlin Lucia	4			
8						
9						
10						
11						
12						
13						
14						
15						
16						
17						
18						
19						
20						
		Meal count	35			
7. Control Operations: Task: Point protection at inholdings and trail system infrastructure between Prince Creek and Cascade Creek. Purpose: To protect inholdings and infrastructure. End state: Inholdings and infrastructure are secure from fire impacts.						
8. Special Instructions: Boat Coordinator will be located at Fields Point. 24, 48, 72 hour planning/logistical support will be paramount to our success.						
9. Division/Group Communication Summary See Communications Plan						
Prepared by (Resource Unit Ldr) <i>Meredith Butcher</i>			Approved by (Planning Sect. Ch.) <i>Aileen Nichols</i>		Date 06/11/2024	Time 2000

DIVISION ASSIGNMENT LIST			1. Branch II		2. Division S	
3. Incident Name Pioneer			4. Operational Period Date: 06/12/2024 Time: 0600-2200			
5. Operations Personnel						
Operations Chief		John Spencer Whitney Machado - t		Branch Director		Spencer Gregory
Safety Officer		Ray Hershey		Division Supervisor		Anna Graves
6. Resources Assigned this Period						
Strike Team/Task Force/Resource Designator		Leader	# Persons	LWD	Drop Off PT./Time	Pick Up PT./Time
1						
2						
3						
4						
5						
6						
7						
8						
9						
10						
11						
12						
13						
14						
15						
16						
17						
18						
19						
20						
		Meal count				
7. Control Operations: Task: Scout division S for secondary control line opportunities (8200 Rd, Coyote Ridge, Nelson Butte and Gold Creek 600 Rd). Purpose: To identify opportunities for control line. End state: Potential control lines are identified in alignment with suppression strategy.						
8. Special Instructions: 24, 48, 72 hour planning/logistical support will be paramount to our success.						
9. Division/Group Communication Summary See Communications Plan						
Prepared by (Resource Unit Ldr) <i>Meredith Butcher</i>			Approved by (Planning Sect. Ch.) <i>Aileen Nichols</i>		Date 06/11/2024	Time 2000

DIVISION ASSIGNMENT LIST			1. Branch II		2. Group Roads	
3. Incident Name Pioneer			4. Operational Period Date: 06/12/2024 Time: 0600-2200			
5. Operations Personnel						
Operations Chief		John Spencer Whitney Machado - t		Branch Director		Spencer Gregory
Safety Officer		Ray Hershey		Division Supervisor		Jesse Stone Aaron Bruning - t
6. Resources Assigned this Period						
Strike Team/Task Force/Resource Designator		Leader	# Persons	LWD	Drop Off PT./Time	Pick Up PT./Time
1						
2						
3						
4						
5						
6						
7						
8						
9						
10						
11						
12						
13						
14						
15						
16						
17						
18						
19						
20						
		Meal count				
7. Control Operations: Task: Scout and prep 8200 Rd (Grade Creek Rd) to be utilized for mobilization of division S resources. Purpose: To open the 8200 Rd for use. End state: 8200 Rd is accessible for fire resources.						
8. Special Instructions: 24, 48, 72 hour planning/logistical support will be paramount to our success.						
9. Division/Group Communication Summary See Communications Plan						
Prepared by (Resource Unit Ldr) <i>Meredith Butcher</i>			Approved by (Planning Sect. Ch.) <i>Aileen Nichols</i>		Date 06/11/2024	Time 2000

AIR OPERATIONS SUMMARY ICS-220						Time Prepared 15:00	Date Prepared 6/11/2024	Prepared By <i>Callan Wilkins - AOBDt</i>					
Incident Name / Number Pioneer / WA-SES-000173			Sunrise 05:00	Sunset 20:58	Airport S10	Pumpkin 21:28	Shutdown 21:00	Operational Period - Date 6/12/2024			Operational Period - Time 0600-2200		
General Remarks, Safety Notes, Hazards, Air Operations Special Equipment, etc.						Helibase Information		TFR 4/5504 Surface to 10,000' MSL H1 48 10.813N / 120 31.914W 25 Mile 47 59.212N / 120 16.526W Lucerne 48 12.162N / 120 35.447W			Medivac Ship Information		
<p>*Order All Aircraft through CWICC Dispatch. Command or 509-884-3473</p> <p>*Sanitize Buckets before changing water sources.</p> <p>*Clear drop area/line before initiating drop sequence.</p> <p>*Be cognizant of all overhead and enviromental hazards while working with Aircraft.</p> <p>*All GPS is to be collected in DDM</p> <p>*Aviation daily cost to: 2024.pioneer.finance@firenet.gov</p>						Pioneer Helibase Location 47 51.96 N 119 56.56 W Phone 509-560-9484					Short Haul Name: N-407RL Phone: 406-212-4515 Make/Model: 407 Location: 25 Mile Request Procedure for These Aircraft: Communications on Command, Order through Helibase, 509-560-9484		
Incident Frequencies	RX	Tone	TX	Tone	AM/FM	Position	Name	Phone	EQUIPMENT/SUPPLIES				
Air to Air Primary (A-8)	123.4000		123.4000		AM	AOBD	Nancy Barker	253-312-4301	Com Trailer E20				
Air to Air Secondary (A-9)	118.2750		118.2750		AM	AOBD-T	Callan Wilkins	509-899-3876					
						ASGS							
A/G Primary (A-10)	169.1500		169.1500		FM	ASGS-T	Jesse Machado	509-881-9393					
A/G Secondary (A-11)	168.4000		168.4000		FM	HEBM-T	David Kessler	509-560-9484					
AIR GUARD	168.6250		168.6250	110.9	FM								
VMED 29 - Life Flight	155.3475	156.7	155.3475	156.7	FM								
						UAO	Cory Dolberry	509-668-2801					
HELICOPTERS - Lake Chelan						HELICOPTERS - GACC Prepo. *NOT assigned							
FAA #	TYPE	Make/Model	Helibase	Start	Avail	Remarks	FAA #	TYPE	Make/Model	Airport	Start	Avail	Remarks
HB-16FH	1	UH-60	Chelan	0800	0900	BKT/LL	H-407RL	3	407	WEN	0800	0900	Short-haul
HB-17FH	1	UH-60A	Chelan	0800	0900	BKT/LL	H-205TK	2	Bell 205A	WEN	0800	0900	Rapps
HB-161KA	1	K-1200	Chelan	0800	0900	BKT/LL							
UAS						FIXED WING AA/HLCO							
Call Sign	Type	Make/Model	Base	Start	Avail	Remarks	FAA #	Call Sign	Make/Model	Base	Start	Avail	Remarks

1. Incident Name:		2. Date/Time Prepared:		3. Operational Period:	
PIONEER		Date: 06/11/2024 Time: 18:00		Date/Time From: 06/12/2024 0600 Date/Time To: 06/12/2024 2200	

4. Basic Radio Channel Use:

Zone Group	Ch #	Function	Channel Name/Trunked Radio System Talkgroup	Assignment	RX Freq	RX Tone/NAC	TX Freq	TX Tone/NAC	Mode (A,D, or M)	Remarks
	1	COMMAND	SLIDE	ALL DIVS	173.0500	146.2	164.9125	141.3	A	SLIDE MT (SE OF FIRE)
	2	COMMAND	OLD MAID	ALL DIVS	173.0500	146.2	164.9125	136.5	A	OLD MAID MT (N OF FIRE)
	3	TACTICAL-1	FS TAC	DIVS A&Z	168.2000	000.0	168.2000	000.0	A	
	4	TACTICAL-2	WEN-PROJ	DIVS S & ROADS	168.6750	000.0	168.6750	000.0	A	
	5	LOCAL RPTR	MCGREGOR		166.7500	000.0	165.9750	131.8	A	BACK-UP REPEATER
	6	ROAD TRAFFIC	TRAFFIC	ALL DIVS	159.5400	000.0	159.5400	000.0	A	TRAFFIC
	7	TACTICAL	DNR COMMON	TACTICAL	151.4150	103.5	151.4150	103.5	A	
	8	LOCAL RPTR	DNR CHELAN		159.2250	156.7	151.4750	156.7	A	BACK-UP REPEATER
	9	BLANK							A	
	10	BLANK							A	
	11	AIR-GROUND	A/G PRI	AIR PRIMARY	169.1500	000.0	169.1500	000.0	A	
	12	AIR-GROUND	A/G SEC	AIR SECONDARY	168.4000	000.0	168.4000	000.0	A	
	13	BLANK							A	
	14	BLANK							A	
	15	AIR MEDICAL	VMED 29	AIR MEDICAL	155.3475	156.7	155.3475	156.7	A	EMS AIR COORDINATION
	16	AIR TO GROUND	AIRGUARD	AIRGUARD	168.6250	000.0	168.6250	110.9	A	EMERGENCY AIRCRAFT CONTACT

5. Special Instructions:

6. Prepared By COML		Name: Bruce Hanna	Signature: /s/ Bruce Hanna
ICS 205		IAP Page	Date/Time: 06/11/2024 19:00



OKANOGAN-WENATCHEE NATIONAL FOREST

Resource Guidelines for Uplake Fire Suppression

Fire: Pioneer

Location: Pioneer Creek, North shore of Lake Chelan

Date: 6/11/2024

Resource Advisors

Lead READ: Brigitte Ranne 509-663-6118, brigitte.ranne@usda.gov

REAF trainee: Hector Rodriguez

HUMAN SAFETY IS THE HIGHEST PRIORITY FOR EVERY EMERGENCY RESPONSE ACTION

MIST for Spike Camp and Lucerne Forward Operating Base Management

- Employ minimum impact suppression tactics (MIST) where feasible, especially in remote or sensitive areas.
- If spike camps are necessary, use existing, or previously impacted campsites where available. If existing campsites are not available; use your local resource advisor to help identify the most resilient sites in rocky or sandy soils. Avoid camping in wet meadows, along streams, or on lake shores.
- In small spike camp situations (not Lucerne), individuals should use the "cat-hole" method of disposing of human waste. Toilet seats should be located a minimum of 200 feet from water sources. Holes should be dug 6-8 inches deep.
- Store food properly so that it is not accessible to wildlife. Consider hanging food in trees at least 15 feet off the ground and 5 feet from the trunk of the tree, or store food in sealable containers. Store food away from the campsite (300 feet is ideal) to reduce the risk of human and bear (and rodent!) conflicts.
- Do not let garbage and food scraps accumulate in camp. All garbage and food scraps need to be removed from the camp ASAP and before leaving the site.
- Minimize disturbance to land in preparing bedding and campfire sites. Do not clear vegetation, trench, or excavate a flat spot to create bedding sites.
- Do not use nails in trees. Don't construct camp furniture.
- If a campfire is built for warmth in the evening, build either a pit or mound fire. Use dead and down firewood. Use small diameter wood that burns down more cleanly. Don't burn plastics or aluminum - pack it out with the rest of the camp garbage.

Dipping and Drafting

- No cross-dipping between water bodies. All buckets or snorkels should be cleaned, inspected, and dried in the sun if they must be used between lakes. Dipping in small lakes must be pre-approved by the READ or AA.
- When drafting, use already disturbed areas for stream access (road crossings, dispersed campsites) to reduce the need for riparian vegetation clearing.
- Use screens (3/32" inch) for all pumping operations.
- Use containment pads and basins under pumps and fuel cans. Ensure a spill kit is present with every operating pump.

Invasive Species

- The fire is burning within an infestation of common crupina, a WA State Class A Noxious weed. Prevent spread of crupina off site – plan to wash hose and other equipment. Request fire fighters brush boots before boarding boat.
- Inspect slings and remove all plant/soil material prior to use.
- Ensure all camps, staging areas, helispots and cargo areas are free of invasive plants to prevent spread to un-infested areas.

Fisheries /Aquatic Recommendations

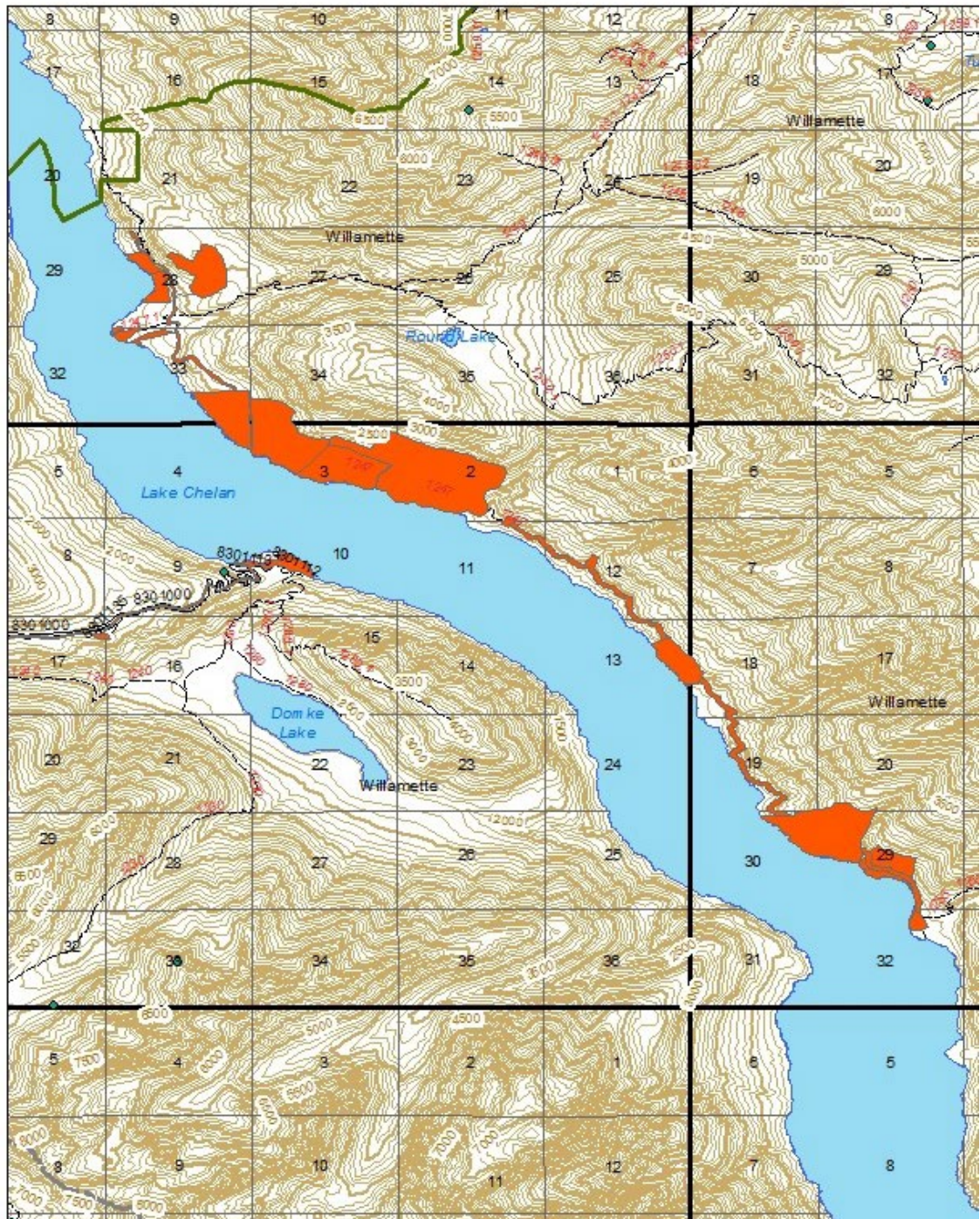
- If trees must be felled in riparian areas for suppression or safety reasons, fell them toward streams where possible and minimize bucking where possible.

Cultural Resources

- If cultural resources are discovered during suppression activities, leave on site and notify READ.



Crupina Seed



Location of common crupina infestations (north shore of Lake Chelan only). The infestation shown at Lucerne is knapweed.

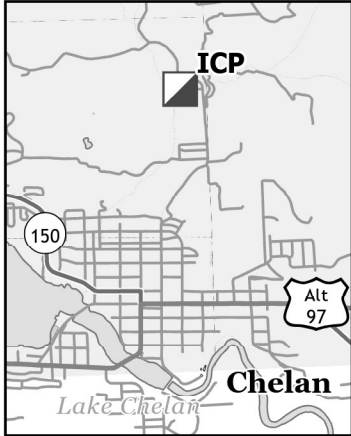


IAP

Pioneer
WA-SES-000173
06/12/2024 16hr

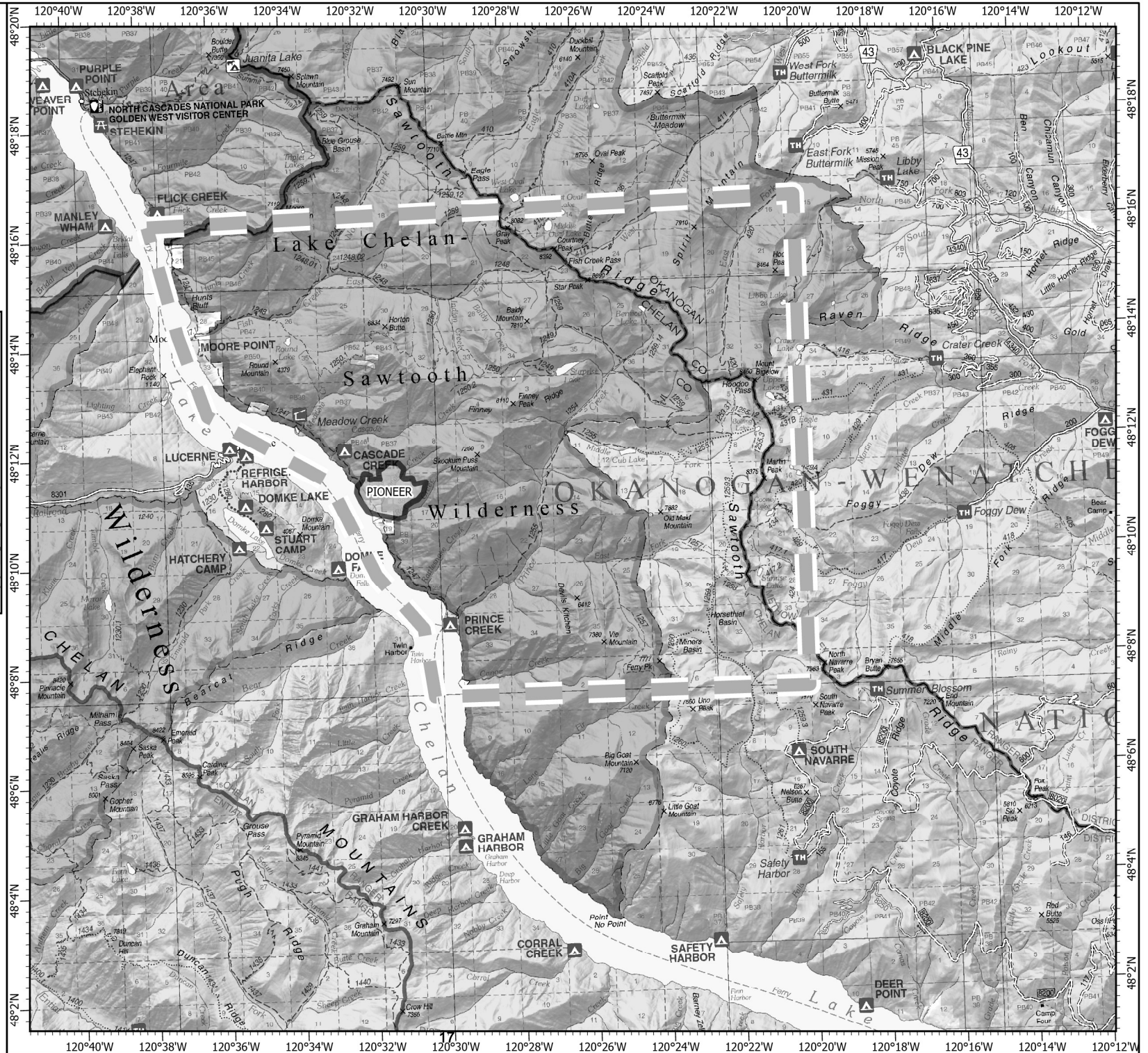
672 acres on 6/11/2024 @ 0848

ICP: Chelan Rodeo Grounds
1099 N Bradley St.
Chelan, WA 98816



- Temporary Flight Restriction
- Wildfire Daily Fire Perimeter

0 1.8 3.5
Miles
1:178,322 | CIMT NW13 | 6/11/2024 1828
Acres from IR
North American 1983 Datum, LatLong Grid



RETURN TO PLANNING OPS BY 1300 HRS
Via radio (preferred method), text, email, photo, or cell phone
Project for Next Operational Period and 48 & 72 hours in the Future

DIVISION PLANNING SHEET		Division/ Group	Name Of Division /Group Supervisor		
Next Operational Period Date:					
Operations and Resource unit text number and e-mail					
<input type="checkbox"/> - Roll over assigned Resources <input type="checkbox"/> -Excess resources <input type="checkbox"/> -Correction to 204					
E or C number	Strike Team/Task Force/ Resource Designator	Leader	Number Persons	Comments	
<input type="checkbox"/> -Request for additional Resources					
Number	Type	Resource Kind	Number	Type	Resource Kind
Operational Projection/Resource Needs/Excess Resources (48 hours):					
Operational Projection/Resource Needs/Excess Resources (72 hours):					
Comments					

ACTIVITY LOG (ICS 214)

1. Incident Name:		2. Operational Period: Date From: _____ Date To: _____	
		Time From: _____	Time To: _____
3. Name:		4. ICS Position:	5. Home Agency (and Unit):
6. Resources Assigned:			
Name	ICS Position	Home Agency (and Unit)	
7. Activity Log:			
Date/Time	Notable Activities		
8. Prepared by: Name: _____ Position/Title: _____ Signature: _____			
ICS 214, Page 1		Date/Time: _____	

1. Incident/Project Name				2. Operational Period											
Pioneer Fire				Date/Time: 06/12/24 0600-2200											
3. Ambulance Services															
Name		Complete Address		Phone		Advanced Life Support (ALS) Yes No									
Lake Chelan EMS		Chelan, WA		911		X									
4. Air Ambulance Services															
Name		Phone		Type of Aircraft & Capability											
Life Flight- Brewster		1-800-232-0911 911		Rotor, ALS, 24 hr											
Airlift NW- Wenatchee		1-800-426-2430 911		Rotor, ALS, 24 hr											
Wenatchee Short haul- Chelan Airport		Order Through CWICC		Rotor, BLS, Daytime, Short haul											
Snohawk 10- Snohomish		1-800-258-5990 911		Rotor, ALS, Daytime, Hoist											
Spokane County Hoist-Spokane		1-509-532-8930 911		Rotor, ALS, 24 hr, Hoist											
5. Hospitals															
Name		Degrees Decimal Minutes		Travel Time From Fire Air Boat		Phone		Helipad Yes No		Level of Care					
Lake Chelan Health 110 S. Apple Blossom Drive Chelan WA		Lat: 47° 50' 20 N		30 Min 3 Hrs		509-683-2474		X		Level IV Trauma					
		Long: 119° 59' 20 W													
Central Washington Hospital 1201 S. Miller Wenatchee WA		Lat: 47° 24. 43 N		1 Hr 4 Hrs		509-433-3115		X		Level II Trauma					
		Long: 120° 19. 28 W													
Harborview Medical Center 325 9 th Ave Seattle WA		Lat: 47° 36. 24 N		1.5 Hr 6 Hrs		206-744-4025		X		Level I Trauma Burn Center					
		Long: 122° 19. 45 W													
ICP		EMS Responders & Capability:				James Brown MEDL/Paramedic		360-775-5413							
		Equipment Available on Scene:				ALS Kit, AED, O2, OTC meds									
		Medical Emergency Channel:				Old Maid Repeater									
		ETA for Ambulance to Scene:													
		Air:				NA									
		Ground:				15 Min									
		Approved Heli-Spot:				NA									
		Lat:				NA									
Long:				NA											
BRANCH I		EMS Responders & Capability:				REMS 1 Caitlin Lucia +3.		443-699-2512							
		Equipment Available on Scene:				ALS Kit, Defib, O2, Rescue gear									
		Medical Emergency Channel:				Old Maid Repeater									
		ETA for Ambulance to Scene:													
		Air:				2 hr									
		Water/Ground:				3 hr									
		Approved Heli-Spot:													
		H-1 48° 10.813 N 120° 31.9242 W				LUCERNE 48° 12.1624 N 120° 35.4476 W									
BRANCH II		EMS Responders & Capability:													
		Equipment Available on Scene:													
		Medical Emergency Channel:				Old Maid Repeater									
		ETA for Ambulance to Scene:													
		Air:				2 hr									
		Ground:				3 hr									
		Approved Heli-Spot:													
		Lat:													
Long:															
Prepared By (Medical Unit Leader)				Date				Reviewed By (Safety Officer)				Date			
James Brown MEDL				06/11/24				Ray Hershey SOF2				06/11/24			
Signature: <i>James Brown</i>								Signature: <i>Ray Hershey</i>							

MEDICAL PLAN (ICS 206 WF)

Controlled Unclassified Information//Basic

Medical Incident Report

FOR A NON-EMERGENCY INCIDENT, WORK THROUGH CHAIN OF COMMAND TO REPORT AND TRANSPORT INJURED PERSONNEL AS NECESSARY.

FOR A MEDICAL EMERGENCY: IDENTIFY ON-SCENE INCIDENT COMMANDER BY NAME AND POSITION AND ANNOUNCE "MEDICAL EMERGENCY" TO INITIATE RESPONSE FROM IMT COMMUNICATIONS/DISPATCH.

Use the following items to communicate situation to communications/dispatch.

1. CONTACT COMMUNICATIONS / DISPATCH (Verify correct frequency prior to starting report)

Ex: "Communications, Div. Alpha. Stand-by for Emergency Traffic."

2. INCIDENT STATUS: Provide incident summary (including number of patients) and command structure.

Ex: "Communications, I have a Red priority patient, unconscious, struck by a falling tree. Requesting air ambulance to Forest Road 1 at (Lat./Long.) This will be the Trout Meadow Medical, IC is TFLD Jones. EMT Smith is providing medical care."

Severity of Emergency / Transport Priority	<input type="checkbox"/> RED / PRIORITY 1 Life or limb threatening injury or illness. Evacuation need is IMMEDIATE <i>Ex: Unconscious, difficulty breathing, bleeding severely, 2° – 3° burns more than 4 palm sizes, heat stroke, disoriented.</i> <input type="checkbox"/> YELLOW / PRIORITY 2 Serious Injury or illness. Evacuation may be DELAYED if necessary. <i>Ex: Significant trauma, unable to walk, 2° – 3° burns not more than 1-3 palm sizes.</i> <input type="checkbox"/> GREEN / PRIORITY 3 Minor Injury or illness. Non-Emergency transport <i>Ex: Sprains, strains, minor heat-related illness.</i>	
Nature of Injury or Illness & Mechanism of Injury		<i>Brief Summary of Injury or Illness (Ex: Unconscious, Struck by Falling Tree)</i>
Evacuation Request		<i>Air Ambulance / Short Haul/Hoist Ground Ambulance / Other</i>
Patient Location		<i>Descriptive Location & Lat. / Long. (WGS84)</i>
Incident Name		<i>Geographic Name + Medical (Ex: Trout Meadow Medical)</i>
On-Scene Incident Commander		<i>Name of on-scene IC of Incident within an Incident (Ex: TFLD Jones)</i>
Patient Care		<i>Name of Care Provider (Ex: EMT Smith)</i>

3. INITIAL PATIENT ASSESSMENT: Complete this section for each patient as applicable (start with the most severe patient)

Patient Assessment: See IRPG PAGE 106

Treatment:

4. EVACUATION PLAN:

Evacuation Location (if different): (Descriptive Location (drop point, intersection, etc.) or Lat. / Long.) Patient's ETA to Evacuation Location:

Helispot / Extraction Site Size and Hazards:

5. ADDITIONAL RESOURCES / EQUIPMENT NEEDS:

Example: Paramedic/EMT, crews, immobilization devices, AED, oxygen, trauma bag, IV/fluid(s), splints, rope rescue, wheeled litter, HAZMAT, extrication

6. COMMUNICATIONS: Identify State Air/Ground EMS Frequencies and Hospital Contacts as applicable

Function	Channel Name/Number	Receive (RX)	Tone/NAC *	Transmit (TX)	Tone/NAC *
COMMAND					
AIR-TO-GRND					
TACTICAL					

7. CONTINGENCY: Considerations: If primary options fail, what actions can be implemented in conjunction with primary evacuation method? Be thinking ahead..

8. ADDITIONAL INFORMATION: Updates/Changes, etc.

REMEMBER: Confirm ETAs of resources ordered. Act according to your level of training. Be Alert. Keep Calm. Think Clearly. Act Decisively.