

Pioneer Incident Action Plan

Monday June 17, 2024

Morning Radio Briefing: 0700
Operational Period: 0600-2200

WA-SES-000173

USFS PNRZ79 (1522) - DOI RZ79 - DNR 221-LDW



Maps-IAP-Check-In



CORRECTED

Health & Safety Message

Managing Change

Change occurs at every moment of every day. Transitions between work shifts, personnel, line assignments, fuels, weather, topography, and other variables are prime opportunities for accidents to occur. Recognizing change and managing it appropriately is every firefighter's responsibility.

Three Technics for Managing Change

- Anticipate Look for it:** Maintain your situational awareness throughout your shift and always anticipate change.
- Ask Questions:** Understand it: Get more information and ask questions. Remember to include all personnel, including subordinates, when information gathering.
- Take Action & Address it:** Take the time to mitigate all hazards and make them known. Stay flexible to adjust your tactics as necessary.

Communications is the best tool to begin understanding and addressing change appropriately. Include all personnel and means necessary to fully identify and communicate change.

Change is Here, Be Mindful and Act Appropriately

Notes

Please Send Photos To
2024.pioneer@firenet.gov

	Ground	Air
FS:		
DNR:		
NPS:		
OSC:		
FS AA:		
DNR AA:		
NPS AA:		

FINANCE MESSAGE

Finance Email: 2024.pioneer.finance@firenet.gov

Finance Phones: *Equipment (208) 891-6877 & TIME (208) 891-8036*

This incident requires electronic documentation. Please email your time to the address above. Scanned PDF's please, no.jpeg's. Feel free to call finance for help if needed. Scanners are also available at ICP.

Required Documents

Overhead, Agency Crews & Cooperators	Contract Resources															
Finance docs needed: Resource Order, Manifest, Cooperative Agreement, Casual Hire Form w/ECI# (as applicable)	Finance docs needed: Resource Order, Manifest, Full Contract/Agreement, Certifications (<i>if required</i>) Pre-Inspection															
Daily: CTRs, Shift Tickets	Daily: CTRs, Shift Tickets, receipts (claims, etc.) NOTE: Document travel times and odometer readings															
Demob: Signed OF-288; Signed OF-286	Demob: Contractor Evaluations, Shift Tickets, receipt(s) for Addition/Deductions, Post-Inspection, Signed OF-286															
<p>Additional Incident Information: </p> <p>Cooperators and AD's...PLEASE email us your agreements!</p>	<p>Please call finance regarding issues with your time:</p> <table style="width: 100%; border: none;"> <tr> <td>O-15 James, Matthew</td> <td>O-49 Zemke, Jeremy</td> <td>E-90 Wilson Farm</td> </tr> <tr> <td>O-16 Gregory, Spencer</td> <td>O-86 Rule, Jerry</td> <td>E-77 David Rains</td> </tr> <tr> <td>O-24 Cronk, Charlie</td> <td>C-2 Wenatchee River</td> <td>E-14 Artillery Concepts</td> </tr> <tr> <td>E-15 Spartan</td> <td>E-89 Big State Wildfire</td> <td>E-88 Blackstone Forestry</td> </tr> <tr> <td>E-95 WW Pumping Service</td> <td>E-96 Bobs Welding</td> <td>E-97 Vegetation Solution</td> </tr> </table>	O-15 James, Matthew	O-49 Zemke, Jeremy	E-90 Wilson Farm	O-16 Gregory, Spencer	O-86 Rule, Jerry	E-77 David Rains	O-24 Cronk, Charlie	C-2 Wenatchee River	E-14 Artillery Concepts	E-15 Spartan	E-89 Big State Wildfire	E-88 Blackstone Forestry	E-95 WW Pumping Service	E-96 Bobs Welding	E-97 Vegetation Solution
O-15 James, Matthew	O-49 Zemke, Jeremy	E-90 Wilson Farm														
O-16 Gregory, Spencer	O-86 Rule, Jerry	E-77 David Rains														
O-24 Cronk, Charlie	C-2 Wenatchee River	E-14 Artillery Concepts														
E-15 Spartan	E-89 Big State Wildfire	E-88 Blackstone Forestry														
E-95 WW Pumping Service	E-96 Bobs Welding	E-97 Vegetation Solution														

Incident Name: **Pioneer**
 Incident Number: **WA-SES-000173**
 Financial codes:
 WA DNR – **221-LDW**
 DOI – **RZ79**
 USDA – **PNRZ79 (1522)**

Please make sure you check in using QR code on the front of the IAP and then email your time daily.
THANK YOU!!

CHECK-IN

Please complete the virtual check-in process via the QR code on the front cover.

You are not checked in until you provide the following:

- Red Cards
- Roster/Manifest

Please email documents to:
2024.pioneer.demob@firenet.gov

DEMOB

Fliers complete the “Air Travel Request” via the QR code on the front cover 72 hours prior to flight date.

- Return supplies to the Cache
- Return radios, antennas, etc., to Communications
- Contact Finance about closing out your paperwork

Once the above items have been completed, SCAN the QR code on the front cover and complete the demob questions.

If you have any questions about Check-In or DEMOB please email demob at 2024.pioneer.demob@firenet.gov or call 509-661-5372. Please include your request number in the subject line when emailing.

INCIDENT OBJECTIVES	1. Incident Name Pioneer	2. Date June 16, 2024	3. Time 2000
4. Operational Period: 06/17 0600-2200			
5. General Objectives: Implement suppression strategies and objectives for short/long-term planning. <ul style="list-style-type: none"> • Provide for firefighter and public safety through hazard identification and application of a shared risk management process. • Coordinate public information to provide timely updates to agency partners, cooperators, and the public. • Coordinate suppression activities with READs to identify current and future impacts on the landscape. • Effectively manage and track costs with daily IAP reporting. • Coordinate with agency leadership/administrators to ensure effective and efficient management of firefighting resources. • Identify best course of action for firefighter support, both logistically and operationally. Operational objectives: <ul style="list-style-type: none"> • Implement a point protection strategy to protect private and federal infrastructure. • Triage additional infrastructure within fire planning area to minimize the potential impact to these sites. • Communicate with local law enforcement officials to ensure current and potential evacuations is coordinated. • Evaluate current fire conditions, identify/utilize features that could lead to fire growth, and validate strategic indirect (new/historical) control lines. • Utilize appropriate tactics for current/future fire environment and the predominantly wilderness landscape . • Develop a long-term strategic plan for suppression of the incident. 			
5a. Incident Requirements <ul style="list-style-type: none"> • Provide Agency Administrator updates and briefings on incident status. • Firefighting operations will implement tactics that offer the highest probability of success to minimize impacts to the landscape and minimize unnecessary exposure to firefighters. • Incident values are firefighter and public safety, critical infrastructure, private land and natural resources. 			
5b. Leaders Intent <ul style="list-style-type: none"> • Safety: Firefighter, public, boat and aviation safety will be addressed through DRA process. • ISAP: Engage agencies with strategic alignment process, for shared values at risk. • Communication: Keep Agency Administrators and firefighters informed of strategic actions, accomplishments, and challenges. • Operations: Make informed strategic/tactical decisions suppressing the fire in the right geographic locations with the appropriate resources and highest probability of success. • Stakeholders: Collaborate with local partners, officials, and landowners to provide situational updates pertinent to the fire. • Logistics: Provide support ensuring food, water, and shelter for incident responders. • Human Resources: Ensure that all incident personnel are treated with dignity and respect, while having zero tolerance for harassment, alcohol, or illegal drug use. • Public Information: Provide timely and accurate information through media outlets, briefings, and social platforms as needed. • Finance: Monitor and communicate incident cost associated with meeting incident objectives. • Planning: Provide incident documentation, resource tracking, and meeting management. 			
6. Weather Forecast & General Safety Message for Period – See Attached			
7. Attachments (mark if attached)			
<input checked="" type="checkbox"/> Organization List - ICS 203	<input checked="" type="checkbox"/> Weather Forecast	<input checked="" type="checkbox"/> Safety Message	
<input checked="" type="checkbox"/> Div. Assignment Lists - ICS204	<input checked="" type="checkbox"/> Fire Behavior Forecast	<input type="checkbox"/> Medical Emergency Com Plan	
<input checked="" type="checkbox"/> Communications Plan - ICS 205	<input checked="" type="checkbox"/> Incident Map	<input type="checkbox"/>	
<input checked="" type="checkbox"/> Medical Plan - ICS 206	<input checked="" type="checkbox"/> Air Operations - ICS 220	<input type="checkbox"/>	
9. Prepared by Aileen Nichols	9. Approved by (Incident Commander) <i>Brian Gales</i>		

ORGANIZATION ASSIGNMENT LIST	
1. Incident Name Pioneer	
2. Date June 16, 2024	3. Time 1830
4. Operational Period June 17, 2024 0600-2200	
Position	Name
CIMTNW13 LWD 6/24/2024	
5. Incident Commander and Staff	
Incident Commander	Brian Gales (O-8.1)
Deputy Incident Commander	Eric Riener (O-8.2)
Liaison Officer	Bill Neckels (O-8.3)
ISAP	Robert Burnside (O-14)
Information Officer	Eric Waters (O-8.5)
Safety Officer	Ray Hershey (O-8.4)
Safety Officer - t	Jeremiah Maghan (O-62)
Human Resources	Margaret Dietrich (O-109)
6. Agency/Organization Representative(s):	
USFS Oak/Wen Agency Administrator	Kari Grover-Wier
USFS Oak/Wen Agency Administrator - t	Paul Willard
DNR Agency Administrator	Larry Leach
DNR Deputy Agency Administrator	Wyatt Leighton
NPS Agency Administrator	Ashley Rawhouser
NPS FMO	Matt Ellis
USFS LEAD READ	Brigitte Ranne
REAF - t	Hector Rodriguez
7. Planning Section	
Plans Chief	Aileen Nichols (O-8.14)
Resources Unit	Meredith Butcher (O-8.15)
Status Check-In/ Demob Unit	Laura Backlund (O-8.20)
Situation Unit	Laurie Bergvall (O-8.18)
Fire Behavior Analyst	Dean Warner (O-8.19)
Fire Behavior Analyst - Lucern	Steve Ziel (O-72)
Incident Meteorologist	Trent Smith (O-58)
Documentation Unit - Virtual	Deidre Smith (O-59)
GIS Specialist	Austin Lewandowski (O-50)
GIS Specialist	Josh Serfass (O-100)
Computer Specialist	Dave Johnson (O-8.17)
8. Logistics Section	
Logistics Chief	Bryan Swanberg (O-8.22)
Deputy Logistics Chief - Lucern	Cindy Preston (O-8.21)
Deputy Logistics Chief	Dave Willis (O-8.23)
Supply Unit Leader	Jon Byerly (O-8.25)
Ordering Manager	Robert Yarnall (O-8.30)
Communications Unit Ldr	Jarrold Nordloh (O-132)
Incident Comm Mgr	Trina Contreras (O-8.31)
Com Tech	Brian Wolfenburger (O-8.32)
Food Unit Leader	Pat Young (O-8.26)
Facilities Unit Leader	Keith Yonaka (O-8.24)
Medical Unit Leader - ICP	James Brown (O-8.28)
Medical Unit Leader - Lucern	Ben Meacham (O-118)
Ground Support Unit	William Braddy (O-8.29)
Receiving/Distribution Mgr - t	Karl Peterson (O-31)

Base Camp Manager	Carl Schilter (O-12)	
Security Manager	Chris Dodds (O-11)	
Equipment Manager	Charlie Carmichael (O-23)	
9. Operations Section		
Operations (Field)	John Spencer (O-8.6) Whitney Machado - t (O-8.41)	
Operations (Planning)	Tom Hall (O-13)	
Operations	Brad Reed (O-8.9)	
a. Branch I		
Branch Director		Matt James (O-15)
Division Supervisor	A	Erik Thorp (O-53) Chris Carr - t (O-54)
Division Supervisor	D	Ben Lippert (O-103) Silas Baffa - t (O-107)
Division Supervisor	Z	Robert Boles (O-8.13) Pat Chism - t (O-26)
Group Supervisor	Structure	Charlie Cronk (O-24)
b. Branch II		
Branch Director		Spencer Gregory (O-16)
Division Supervisor	S	Anna Graves (O-8.10)
Group Supervisor	Roads	Andy Hall (O-106) Aaron Bruning - t (O-69)
c.		
Division Supervisor	H	Rob Poyner (O-135)
d. Air Operations Branch		
Air Operations	Nancy Barker (O-8.8)	
Air Support Group	David Moore (O-102) Jesse Machado - t (O-38)	
Helibase Manager	Jerry Rule (O-86)	
10. Finance Section		
Finance Chief	Veronika Klukas (O-8.33)	
Deputy Finance Chief	Paula James (O-8.34)	
Cost Unit - Virtual	Lori Price (O-8.35)	
TIME Unit	Heather Fitzpatrick (O-8.38)	
Proc Unit Leader	Eric Soto (O-8.37)	
COMPS/CLAIMS	Laurette Gaylord (O-45)	
Incident Cont. Project Insp	Stan Zazado (O-8.39)	
In-Box Manager/PTRC	Emily Cohn (O-46)	
PREPARED BY: Meredith Butcher		



Fire Weather Forecast



FORECAST NO: 05
PREDICTION FOR: 24 Hr Shift
SHIFT DATE: Monday 6/17/2024

INCIDENT: Pioneer Fire

SIGNED: Trent Smith *Trent P. Smith*

TIME AND DATE ISSUED: 6/16/2024 1800 hrs

Incident Meteorologist (IMET)

Discussion: A broad trough of low pressure will be over the region for the next couple of days. Temperatures will be warming slightly each day with lower humidity readings. The northwesterly winds will be gusty once again this afternoon and evening. The threat of showers and even thunderstorms exists during the afternoon.

WEATHER FORECAST FOR TODAY:

SKY/WEATHER: Partly cloudy. 20% chance of rain showers in the afternoon. 5% chance of a thunderstorm in the afternoon.

MAX TEMPERATURE: 68 to 73.

MIN RH: 29 to 34 percent.

20 FT WINDS:

Lower Valleys: Northwest 5 to 10 mph. Gusts to 25 mph in the afternoon.

Mid-slopes and Ridges: Northwest 5 to 10 mph increasing 10 to 15 mph gusts to 35 mph in the afternoon.

HAINES INDEX: 3 Very Low.

TRANSPORT WINDS: NW 20 mph.

INVERSION: 1500 ft inversion lifting to 7000 ft by afternoon.

TONIGHT:

SKY/WEATHER: Partly cloudy. 15% chance of rain showers in the evening.

MIN TEMPERATURE: 46 to 51.

MAX RH: 60 to 65 percent.

20 FT WINDS:

Valleys/Lower Slopes: Northwest 5 to 10 mph decreasing to around 5 mph after midnight.

Mid-Slopes and Ridges: Northwest 8 to 12 mph with gusts to 25 mph decreasing 5 to 10 mph.

INVERSION: Developing after 2000 hrs near 1000 ft.

TUESDAY:

SKY/WEATHER: Partly cloudy. 20% chance of rain showers and a 10% chance of thunderstorms in the afternoon.

MAX TEMPERATURE: High 72 to 77.

MIN RH: 25 to 30 percent.

20 FT WINDS:

Lower Valleys: Northwest 5 to 10 mph.

Mid-slopes and Ridges: Northwest 5 to 10 mph. Gusts to 25 mph in the afternoon.

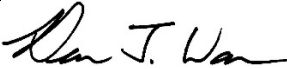
HAINES INDEX: 3 Very Low.

TRANSPORT WINDS: NW 12 mph.

Yesterdays observations thru 1700	Min Temp	Max RH	Max Temp	Min RH	Peak Wind	Precipitation
Stehekin RAWS (1230')	44	65%	67	24%	24 mph	0.00
Lake Chelan Airport (1260')	46	50%	66	17%	33 mph	0.00
Entiat RAWS (2825')	43	59%	61	24%	27 mph	0.00
Camp 4 RAWS (3156')	39	65%	65	22%	14 mph	0.00

Weather observations can be texted to 406-360-6330 or emailed to trent.smith@noaa.gov

Fire Behavior Forecast # 6

Name of Incident: Pioneer Fire WA-SES-000173	Administrative Unit: SE Region DNR / Okanagan-Wenatchee NF
Date & Time Issued: 1900 – 6/16/2024	Operational Period: Day 6/17/2024
FBAN: Dean Warner	Signed: 

Weather Summary - See attached Pioneer Fire Weather Forecast.

Fire Behavior Summary

	FUEL MODEL	Maximum ROS	Backing ROS	Maximum Flame length	Backing Flame length
General – Spotting potential: 0.25 + mi. Probability of Ignition: 60% Haines Index: 3 (low) LAL: 1 ERC – Y: 39 (72 percentile)	GR2 - Moderate load grass shrub	13 ch/hr	3 ch/hr	1 feet	1 feet
	SH2 - Moderate load shrub	7 ch/hr	3 ch/hr	2 feet	1 feet
	TU5 – Very high load timber shrub	16 ch/hr	6 ch/hr	7 feet	2 feet
	TL8 – Long needle timber litter	12 ch/hr	4 ch/hr	3 feet	1 feet

GENERAL

Today's conditions will support active fire spread. Fire is now established in Meadow Creek on the north side of the fire and Rattlesnake Creek on the south side of the fire but has not crossed either at this time. To the east, the fire continues to make progress to the ridge line of Skookum Puss Mountain. Spotting has been observed up to one quarter mile.

Topography: This fire lies on the north slopes of Lake Chelan on a dry southwest aspect. Steep rugged terrain dominates the fire environment. Rolling material and short upslope fire runs will pose a safety risk. Several natural barriers in the form of rock outcrops and scree slopes are present in the fire area. Expect slope reversals to be more dramatic than usual as this type of fire progression will present in severe contrast from downhill backing rate of spread. Rolling debris will enhance backing rates of spread.

Fuels: The fire is burning in the old Rex Creek burn scar from 2001. This 23 year old fire scar has left behind a mosaic of fuels including a moderate load of heavy fuel, which is dry enough to sustain fire spread. Rock outcrops can disrupt the fuel continuity but dry grass and sparse dead and downed material in rocky areas can still maintain fire progression.

ERC: Due to the time of year, Energy Release Component values remain below the 90th percentile. The dry aspect, lake winds, and steep slopes offer ample opportunity for this fire to outperform typical fire indices.

SPECIFIC

Alpha: Fire may be hung up on Meadow Creek. If the fire were to establish on the north side of Meadow Creek expect the fire to burn north into a no-name drainage, while progression east will be hindered through the Round Lake saddle against steady NW winds.

Zulu: Expect fire to establish in the Prince Creek drainage. Prince Creek is flowing strong this time of year so spotting represents the best chance for the fire to cross the creek. Watch for spotting on the lower slopes where the ridge to valley difference is the least.

Ridgetop: Fire will continue to advance to the top of Skookum Puss Mountain and associated ridgeline that defines the west side of Prince Creek.

Air Ops/Smoke Dispersion

Smoke from active fire may impact visibility for air operations.

Safety

Today is a new day, update your expectations to fit current conditions. This fire is persistent in finding opportunity to grow where few elements remain consistent. This fire will continue to challenge our plans, progress, and accomplishments. Remain flexible for whatever turn this fire takes next. Prepare and plan for it with LCES always in place.

DIVISION ASSIGNMENT LIST			1. Branch I		2. Division A	
3. Incident Name Pioneer			4. Operational Period Date: 06/17/2024 Time: 0600-2200			
5. Operations Personnel						
Operations Chief		John Spencer Whitney Machado - t		Branch Director		Matt James
Safety Officer		Ray Hershey		Division Supervisor		Eric Thorp Chris Carr - t
6. Resources Assigned this Period						
Strike Team/Task Force/Resource Designator		Leader	# Persons	LWD	Drop Off PT./Time	Pick Up PT./Time
1	O-49 TFLD	Jeremy Zemke	1	6/26		
2	O-52 TFLD - t	Dante Ybarra	1	6/26		
3	O-50 TFLD Boat Coordinator	Todd Olson	1	6/26	Lucerne	
4	O-20 TFLD - t Boat Coordinator	Katy Giddings	1	6/18	ICP	
5						
6	C-8 CRW1 Union IHC	Eric Jorgenson	25	6/27		
7	C-9 CRW1 Zigzag IHC	Sandra Sperry	25	6/28		
8	C-4 CRW1 LaGrande IHC	Juan Elquezabal	21	6/23		
9	C-2 CR2I Wenatchee River C74	Ben Marquart	15	6/24		
10						
11	O-67 MEDIC 3	Adam Lathrop	1	6/27		
12						
13	O-63 SOF2	Larry Wright	1	6/26		
14						
15						
16						
17						
18						
		Meal count	92			
7. Control Operations: Task: Contain fire spread to the northwest where terrain and fuels allow for highest probability of success. Assess fire perimeter progression to the north and east at higher elevations. Implement point protection efforts on federal & private infrastructure. Purpose: To slow fire progression, provide time for suppression tactics, and prep around critical values. End state: Minimize fire impacts to critical values including private inholdings and Forest Service infrastructure.						
8. Special Instructions: In large or long term spike camps use helicopters, boats, or pack stock to deliver portable backcountry latrines and remove human waste if necessary. If camp does not have adequate pack, boat, or air support for human waste management, establish community latrines well away from water sources and common areas. Use human waste bags, if necessary. Minimize ground disturbance on the Moore Point and Meadow Creek alluvial fans in order to protect sensitive resources. Ensure hazard mitigations and IWI protocols are in place before taking action.						
9. Division/Group Communication Summary						
See Communications Plan						
Prepared by (Resource Unit Ldr) <i>Meredith Butcher</i>			Approved by (Planning Sect. Ch.) <i>Aileen Nichols</i>		Date 06/16/2024	Time 2000

DIVISION ASSIGNMENT LIST			1. Branch I		2. Division D	
3. Incident Name Pioneer			4. Operational Period Date: 06/17/2024 Time: 0600-2200			
5. Operations Personnel						
Operations Chief		John Spencer Whitney Machado - t		Branch Director		Matt James
Safety Officer		Ray Hershey		Division Supervisor		Ben Lippert Silas Baffa - t
6. Resources Assigned this Period						
Strike Team/Task Force/Resource Designator		Leader	# Persons	LWD	Drop Off PT./Time	Pick Up PT./Time
1	C-11 CRW1 Redmond IHC	Dave Varon	20	6/29		
2						
3						
4						
5						
6						
7						
8						
9						
10						
11						
12						
13						
14						
15						
16						
17						
18						
		Meal count	20			
7. Control Operations: Task: Evaluate and assess structures from Flick Creek to the community of Stehekin. Look for opportunities to contain fire spread in and around Flick Creek area where terrain and fuels allow for highest probability of success. Purpose: Minimize fire impacts to critical values including private inholdings, the town of Stehekin, and Forest Service infrastructure. End state: Critical values including private inholdings, the town of Stehekin, and Forest Service infrastructure are not impacted by the Pioneer fire, while minimizing fire impacts and acres burned utilizing historic wildfire control features and natural barriers.						
8. Special Instructions: In large or long term spike camps use helicopters, boats, or pack stock to deliver portable backcountry latrines and remove human waste if necessary. If camp does not have adequate pack, boat, or air support for human waste management, establish community latrines well away from water sources and common areas. Use human waste bags, if necessary. Ensure hazard mitigations and IWI protocols are in place before taking action.						
9. Division/Group Communication Summary See Communications Plan						
Prepared by (Resource Unit Ldr) <i>Meredith Butcher</i>		Approved by (Planning Sect. Ch.) <i>Aileen Nichols</i>		Date 06/16/2024	Time 2000	

DIVISION ASSIGNMENT LIST			1. Branch I		2. Division Z	
3. Incident Name Pioneer			4. Operational Period Date: 06/17/2024 Time: 0600-2200			
5. Operations Personnel						
Operations Chief		John Spencer Whitney Machado - t		Branch Director		Matt James
Safety Officer		Ray Hershey		Division Supervisor		Robert Boles Pat Chism - t
6. Resources Assigned this Period						
Strike Team/Task Force/Resource Designator		Leader	# Persons	LWD	Drop Off PT./Time	Pick Up PT./Time
1	O-48 TFLD	Jeff Coburn	1	6/26		
2						
3	C-3 CRW1 Baker River IHC	Gary Chicks	23	6/22		
4	C-1 CRW2 DNR Crew 411	Bryan Lyle	16	6/22		
5						
6	O-41 WFM1 Eagle Cap	Gabe Hale	10	6/25		
7						
8	Boise Helitack	Jacob Campbell	5			
9						
10	O-75 MEDIC 4	Nathan Etherington	1	6/28		
11	O-51 MEDIC 1	Remington Becker	1	6/26		
12						
13	O-20 SOFR	Jeff Higen	1	6/21		
14						
15	A-27 UR-31	Ryan Gregg	4	6/26		
16						
17						
18						
19						
20						
		Meal count	58			
7. Control Operations: Task: Contain fire spread to the southwest where terrain and fuels allow for high probability of success. Assess fire perimeter progression to the west/southwest at higher elevations. Purpose: To slow fire progression, provide time for suppression tactics, and prep around critical values. End state: Minimize fire impacts to critical values including private inholdings and Forest Service infrastructure.						
8. Special Instructions: In large or long term spike camps use helicopters, boats, or pack stock to deliver portable backcountry latrines and remove human waste if necessary. If camp does not have adequate pack, boat, or air support for human waste management, establish community latrines well away from water sources and common areas. Use human waste bags, if necessary. Ensure hazard mitigations and IWI protocols are in place before taking action.						
9. Division/Group Communication Summary See Communications Plan						
Prepared by (Resource Unit Ldr) <i>Meredith Butcher</i>			Approved by (Planning Sect. Ch.) <i>Aileen Nichols</i>		Date 06/16/2024	Time 2000

DIVISION ASSIGNMENT LIST			1. Branch I		2. Group Structure	
3. Incident Name Pioneer			4. Operational Period Date: 06/17/2024 Time: 0600-2200			
5. Operations Personnel						
Operations Chief		John Spencer Whitney Machado - t		Branch Director		Matt James
Safety Officer		Ray Hershey		Division Supervisor		Charlie Cronk
6. Resources Assigned this Period						
Strike Team/Task Force/Resource Designator		Leader	# Persons	LWD	Drop Off PT./Time	Pick Up PT./Time
1						
2						
3						
4						
5						
6						
7						
8						
9						
10						
11						
12						
13						
14						
15						
16						
17						
18						
19						
		Meal count				
7. Control Operations: Task: Point protection at inholdings and trail system infrastructure between Prince Creek and Cascade Creek. Purpose: To protect inholdings and infrastructure. End state: Inholdings and infrastructure are secure from fire impact.						
8. Special Instructions: In large or long term spike camps use helicopters, boats, or pack stock to deliver portable backcountry latrines and remove human waste if necessary. If camp does not have adequate pack, boat, or air support for human waste management, establish community latrines well away from water sources and common areas. Use human waste bags, if necessary. Boat Coordinator will be located at Fields Point. Ensure hazard mitigations and IWI protocols are in place before taking action.						
9. Division/Group Communication Summary						
See Communications Plan						
Prepared by (Resource Unit Ldr) <i>Meredith Butcher</i>			Approved by (Planning Sect. Ch.) <i>Aileen Nichols</i>		Date 06/16/2024	Time 2000

DIVISION ASSIGNMENT LIST			1. Branch II		2. Division S	
3. Incident Name Pioneer			4. Operational Period Date: 06/17/2024 Time: 0600-2200			
5. Operations Personnel						
Operations Chief		John Spencer Whitney Machado - t		Branch Director		Spencer Gregory
Safety Officer		Ray Hershey		Division Supervisor		Anna Graves
6. Resources Assigned this Period						
Strike Team/Task Force/Resource Designator		Leader	# Persons	LWD	Drop Off PT./Time	Pick Up PT./Time
1	O-115 HEQB	Garrett Hansen	1	6/30		
2	O-117 HEQB - t	Ian Fox	1	6/30		
3						
4	**C-10 CR2I Methow Valley IA	Jaeger Holt	22	6/29		
5						
6	E-93 DZR3 Batchelor Excavation	Narce Christiansen	2	6/28		
7						
8	O-43 REMS 1	Caitlin Lucia	4	6/25		
9						
10	E-18, E-93, E-94 UTVs					
11						
12						
13						
14						
15						
16						
17						
18						
19						
20						
		Meal count	30			
7. Control Operations: Task: Implementation of control line along Coyote Ridge from the 8200 Rd to Lake Chelan. Purpose: To establish a barrier to fire progression to the east of Falls Creek. End state: Control line anchored from 8200 Rd to Lake Chelan.						
8. Special Instructions: Ensure hazard mitigations and IWI protocols are in place before taking action. ** Denotes available for Initial Attack.						
9. Division/Group Communication Summary See Communications Plan						
Prepared by (Resource Unit Ldr) <i>Meredith Butcher</i>		Approved by (Planning Sect. Ch.) <i>Aileen Nichols</i>		Date 06/16/2024		Time 2000

DIVISION ASSIGNMENT LIST				1. Branch II		2. Group Roads	
3. Incident Name Pioneer				4. Operational Period Date: 06/17/2024 Time: 0600-2200			
5. Operations Personnel							
Operations Chief		John Spencer Whitney Machado - t		Branch Director		Spencer Gregory	
Safety Officer		Ray Hershey		Division Supervisor		Andy Hall Aaron Bruning - t	
6. Resources Assigned this Period							
Strike Team/Task Force/Resource Designator		Leader	# Persons	LWD	Drop Off PT./Time		Pick Up PT./Time
1	O-83 TFLD	Mark Lewis	1	6/29			
2	O-116 HEQB - t	Tyler Meyer	1	6/30			
3	O-22 THSP	Rick Long	1	6/20			
4							
5	E-73 WTS1 Strand Tenders	Wade Strand	1	6/27			
6	E-74 WTS2 MVP Team	Dale Conrad	1	6/27			
7	E-75 WTS2 David Rains	Ron Laymance	1	6/27			
8	E-78 WTS2 King Hydroseeding	Don Warden	1	6/27			
9	E-83 WTS2 King Hydroseeding	Joseph Ivie	1	6/27			
10	E-76 WTS2 Mountain View Wildfire	Shawn Beaman	1	6/28			
11							
12	E-71 GRD2 Pettet	Mark Rowe	2	6/27			
13	E-72 GRD2 Scotts Excavating	Lucas Scott	2	6/27			
14	E-69 FTRA Morris Forestry	Jake Wilcox	2	6/29			
15							
16	O-64 MEDIC 2	Joel Bower	1	6/26			
17	O-76 MEDIC 5	Brian Linacre	1	6/30			
18	O-62 SOFC-t	Jeremiah Maghan	1	6/25			
19							
20	E-19 UTV						
		Meal count	18				
7. Control Operations: Task: Prepare 8200 Rd (Grade Creek Rd) to be utilized for mobilization of division S resources. Purpose: The 8200 roadbed and shoulders are clear of hazards. Provide a safer travel route for responders. End state: 8200 Rd is graded and brushed from Mitchell Creek to Safety Harbor Creek.							
8. Special Instructions: Ensure hazard mitigations and IWI protocols are in place before taking action.							
9. Division/Group Communication Summary See Communications Plan							
Prepared by (Resource Unit Ldr) <i>Meredith Butcher</i>			Approved by (Planning Sect. Ch.) <i>Aileen Nichols</i>			Date 06/16/2024	Time 2000

DIVISION ASSIGNMENT LIST			1. Branch		2. Division H	
3. Incident Name Pioneer			4. Operational Period Date: 06/17/2024 Time: 0600-2200			
5. Operations Personnel						
Operations Chief		John Spencer Whitney Machado - t		Branch Director		
Safety Officer		Ray Hershey		Division Supervisor		Rob Poyner
6. Resources Assigned this Period						
	Strike Team/Task Force/Resource Designator	Leader	# Persons	LWD	Drop Off PT./Time	Pick Up PT./Time
1						
2						
3						
4						
5						
6						
7						
8						
9						
10						
11						
12						
13						
14						
15						
16						
17						
18						
		Meal count				
7. Control Operations: Task: Complete a comprehensive inventory of critical values, proposed control line options to protect those values and the risk to responders associated with those actions in SA4. Purpose: To analyze the strategy as probability vs success. End state: A long term durable strategic plan for the Pioneer Fire.						
8. Special Instructions: In large or long term spike camps use helicopters, boats, or pack stock to deliver portable backcountry latrines and remove human waste if necessary. If camp does not have adequate pack, boat, or air support for human waste management, establish community latrines well away from water sources and common areas. Use human waste bags, if necessary. Ensure hazard mitigations and IWI protocols are in place before taking action.						
9. Division/Group Communication Summary See Communications Plan						
Prepared by (Resource Unit Ldr) <i>Meredith Butcher</i>		Approved by (Planning Sect. Ch.) <i>Aileen Nichols</i>		Date 06/16/2024	Time 2000	

AIR OPERATIONS SUMMARY ICS-220

Incident Name / Number	Sunrise	Sunset	Airport	Pumpkin	Time Prepared	Date Prepared	Prepared By						
Pioneer / WA-SES-000173	05:00	21:01	S10	21:31	18:00 Shutdown 21:00	6/16/2024 6/17/2024	Nancy Barker Operational Period - Time 0600-2200						
General Remarks, Safety Notes, Hazards, Air Operations Special Equipment, etc. *Order All Aircraft through Command to Helibase. *Sanitize Buckets before changing water sources. *Clear drop area/line before initiating drop sequence. *Be cognizant of all overhead and environmental hazards while working with Aircraft. *All GPS is to be collected in DMM *Aviation daily cost to: 2024.pioneer.finance@firenet.gov *Aviation daily cost to: pioneerhelibase2024@gmail.com													
Incident Frequencies	RX	Tone	TX	Tone	A/M/FM	Position	Name	Phone	EQUIPMENT/SUPPLIES				
Air to Air Primary (A-8)	123.4000		123.4000		AM	AOBD	Nancy Barker	(253) 312-4301	Corn Trailer E-20				
Air to Air Secondary (A-9)	118.2750		118.2750		AM	ASGS	David Moore Jr		Hand Wash Station E-47				
A/G Pri Tactical (A-10)	169.1500		169.1500		FM	ASGS-T	Jesse Machado	(509) 881-9393	Water Tender E-77				
A/G Sec Operational (A-11)	168.4000		168.4000		FM	HEBM	Jerry Rule	(253) 548-7711	Water Tender E-14				
A/G 3 Logs (A-47)	166.6125		166.6125		FM	HEBM-T	Benjamin Wagner	(206) 473-2165					
						ATGS	Ryan Koch	(541) 977-4216					
						HLCO	Chad Bergren	(541) 219-2594					
DECK	163.1000		163.1000		FM	HLCO-T	Callan Wilkins	(509) 899-3876					
COMMAND						UAS	Ryan Gregg	(360) 852-2296					
See ICS 205 Communications Plan 14													
AIR GUARD	168.6250		168.6250	110.9	FM	CWICC	Aircraft Desk	(509) 884-3473 x 2					
V/MED 29	155.3475	156.7	155.3475	156.7	FM	UAO	Cory Dolberry	(509) 668-2801					
HELICOPTERS - Assigned													
FAA #	TYPE	Make/Model	Helibase	Avail	Start	Remarks	FAA #	TYPE	Make/Model	Airport	Start	Avail	Remarks
HB-16FH	1	UH-60	Chelan	0900	0800	BKT/LL	H-205TK	2	Bell 205A	Chelan	0800	0900	Rapps
HB-17FH	1	UH-60A	Chelan	0900	0800	BKT/LL							
HB-161KA	1	K-120	Chelan	0900	0800	BKT/LL							
HB-344RA	1	CH-47D	Chelan	0900	0800	BKT/LL							
H-304HA	2	Bell 205A	Chelan	0900	0800	BKT/LL							
H-407RL	3	407	Chelan	0900	0800	Wenatchee Short-haul							
H-684H	3	407	Chelan	0900	0800	BKT/LL/Recon/HLCO							
HELICOPTERS - GACC Prepo													
FAA #	TYPE	Make/Model	Airport	Start	Avail	Remarks	FAA #	TYPE	Make/Model	Airport	Start	Avail	Remarks
FIXED WING AA/HLCO													
Call Sign	Type	Make/Model	Base	Start	Avail	Remarks	FAA #	Call Sign	Make/Model	Base	Start	Avail	Remarks
UR-31	3	Atlix	Lucerne	0600	2200	IR/PSD	N-586DV	610	Commander	WEN	0800	1000	Air Attack
							H-684H	84H	407	Chelan	0800	0900	Shared Yale Helitack
							N-197GB	617	Commander	Chelan	0900	1000	Wenatchee IA (not assigned)

INCIDENT RADIO COMMUNICATIONS PLAN (ICS 205)

Controlled Unclassified Information//Basic

1. Incident Name:		2. Date/Time Prepared:		3. Operational Period:						
PIONEER		Date: 06/16/2024 Time: 17:04		Date/Time From: 06/17/2024 0600 Date/Time To: 06/18/2024 0600						
4. Basic Radio Channel Use:										
Zone Group	Ch #	Function	Channel Name/Trunked Radio	Assignment	RX Freq	RX Tone/NAC	TX Freq	TX Tone/NAC	Mode (A, D, or M)	Remarks
	1	TACTICAL	TAC 1	DIV A	168.0500	123.0	168.0500	123.0	A	
	2	TACTICAL	TAC 2	DIV D & S	168.2000	123.0	168.2000	123.0	A	USE LOW PWR ON RIDGES
	3	TACTICAL	TAC 3	DIV Z	168.6000	123.0	168.6000	123.0	A	
	4	TACTICAL	TAC 4	STRUCT. / DIV H	166.7250	123.0	166.7250	123.0	A	
	5	TACTICAL	TAC 5	ROADS	166.7750	123.0	166.7750	123.0	A	
	6	TACTICAL	TAC 6	BOAT	168.2500	123.0	168.2500	123.0	A	
	7	COMMAND	CMD 7	ALL	168.4750	123.0	165.4000	123.0	A	CHELAN BUTTE
	8	COMMAND	CMD 8	ALL	169.5375	123.0	164.7125	123.0	A	OLD MAID MT.
	9	COMMAND	CMD 9	ALL	170.4500	123.0	168.1000	123.0	A	FLORA MT.
	10	COMMAND	CMD 10	ALL	170.0125	123.0	165.2500	123.0	A	SLIDE RIDGE
	11	TACTICAL	OLD MAID	UNASSIGNED	173.0500	146.2	164.9125	136.5	A	OLD MAID MT-LOCAL RPTR
	12	TACTICAL	A/G PRI	ALL DIVS	169.1500	000.0	169.1500	000.0	A	
	13	AIR TO GROUND	A/G SEC	ALL DIVS	168.4000	000.0	168.4000	000.0	A	
	14	AIR TO GROUND	A/G 3	ALL DIVS	166.6125	000.0	166.6125	000.0	A	
	15	AIR TO GROUND	VMED 29	ALL DIVS	155.3475	156.7	155.3475	156.7	A	AIR EMS COORDINATION
	16	AIR TO GROUND	AIRGUARD	ALL DIVS	168.6250	000.0	168.6250	110.9	A	EMERGENCY AIRCRAFT CONTACT
5. Special Instructions: 24 hour staffing: PIONEER COMMUNICATIONS PHONE NUMBER: (208) 891-7870 / CURRENT CLONE "PIE 6-16"										
6. Prepared By COML										
				Name: Jeremy Smith						
				Signature: /s/ Jeremy Smith						
ICS 205										
				IAP Page						
				Date/Time: 6/16/2024 17:04						



OKANOGAN-WENATCHEE NATIONAL FOREST

Resource Guidelines for Uplake Fire Suppression

Fire: Pioneer

Location: Pioneer Creek, North shore of Lake Chelan

Date: 6/11/2024

Resource Advisors

Lead READ: Brigitte Ranne 509-663-6118, brigitte.ranne@usda.gov

REAF trainee: Hector Rodriguez

HUMAN SAFETY IS THE HIGHEST PRIORITY FOR EVERY EMERGENCY RESPONSE ACTION

MIST for Spike Camp and Lucerne Forward Operating Base Management

- Employ minimum impact suppression tactics (MIST) where feasible, especially in remote or sensitive areas.
- If spike camps are necessary, use existing, or previously impacted campsites where available. If existing campsites are not available; use your local resource advisor to help identify the most resilient sites in rocky or sandy soils. Avoid camping in wet meadows, along streams, or on lake shores.
- In small spike camp situations (not Lucerne), individuals should use the "cat-hole" method of disposing of human waste. Toilet seats should be located a minimum of 200 feet from water sources. Holes should be dug 6-8 inches deep.
- Store food properly so that it is not accessible to wildlife. Consider hanging food in trees at least 15 feet off the ground and 5 feet from the trunk of the tree, or store food in sealable containers. Store food away from the campsite (300 feet is ideal) to reduce the risk of human and bear (and rodent!) conflicts.
- Do not let garbage and food scraps accumulate in camp. All garbage and food scraps need to be removed from the camp ASAP and before leaving the site.
- Minimize disturbance to land in preparing bedding and campfire sites. Do not clear vegetation, trench, or excavate a flat spot to create bedding sites.
- Do not use nails in trees. Don't construct camp furniture.
- If a campfire is built for warmth in the evening, build either a pit or mound fire. Use dead and down firewood. Use small diameter wood that burns down more cleanly. Don't burn plastics or aluminum - pack it out with the rest of the camp garbage.



Dipping and Drafting

- No cross-dipping between water bodies. All buckets or snorkels should be cleaned, inspected, and dried in the sun if they must be used between lakes. Dipping in small lakes must be pre-approved by the READ or AA.
- When drafting, use already disturbed areas for stream access (road crossings, dispersed campsites) to reduce the need for riparian vegetation clearing.
- Use screens (3/32" inch) for all pumping operations.
- Use containment pads and basins under pumps and fuel cans. Ensure a spill kit is present with every operating pump.

Invasive Species

- The fire is burning within an infestation of common crupina, a WA State Class A Noxious weed. Prevent spread of crupina off site – plan to wash hose and other equipment. Request fire fighters brush boots before boarding boat.
- Inspect slings and remove all plant/soil material prior to use.
- Ensure all camps, staging areas, helispots and cargo areas are free of invasive plants to prevent spread to un-infested areas.

Fisheries /Aquatic Recommendations

- If trees must be felled in riparian areas for suppression or safety reasons, fell them toward streams where possible and minimize bucking where possible.

Cultural Resources

- If cultural resources are discovered during suppression activities, leave on site and notify READ.



Crupina Seed



Location of common crupina infestations (north shore of Lake Chelan only). The infestation shown at Lucerne is knapweed.

LOGISTICS HOURS

Shower: 0500 - 1200 & 1400 - 2200

Supply: 0600 - 2200

Ground Support: 0500 - 2200

Fuel Tender: 0700 - 2100

Kitchen:

Breakfast: 0530 - 0900

Dinner: 1800 - 2100

PIONEER CONTACT LIST

Public Information: 509-210-2926

Communications: 208-891-7870

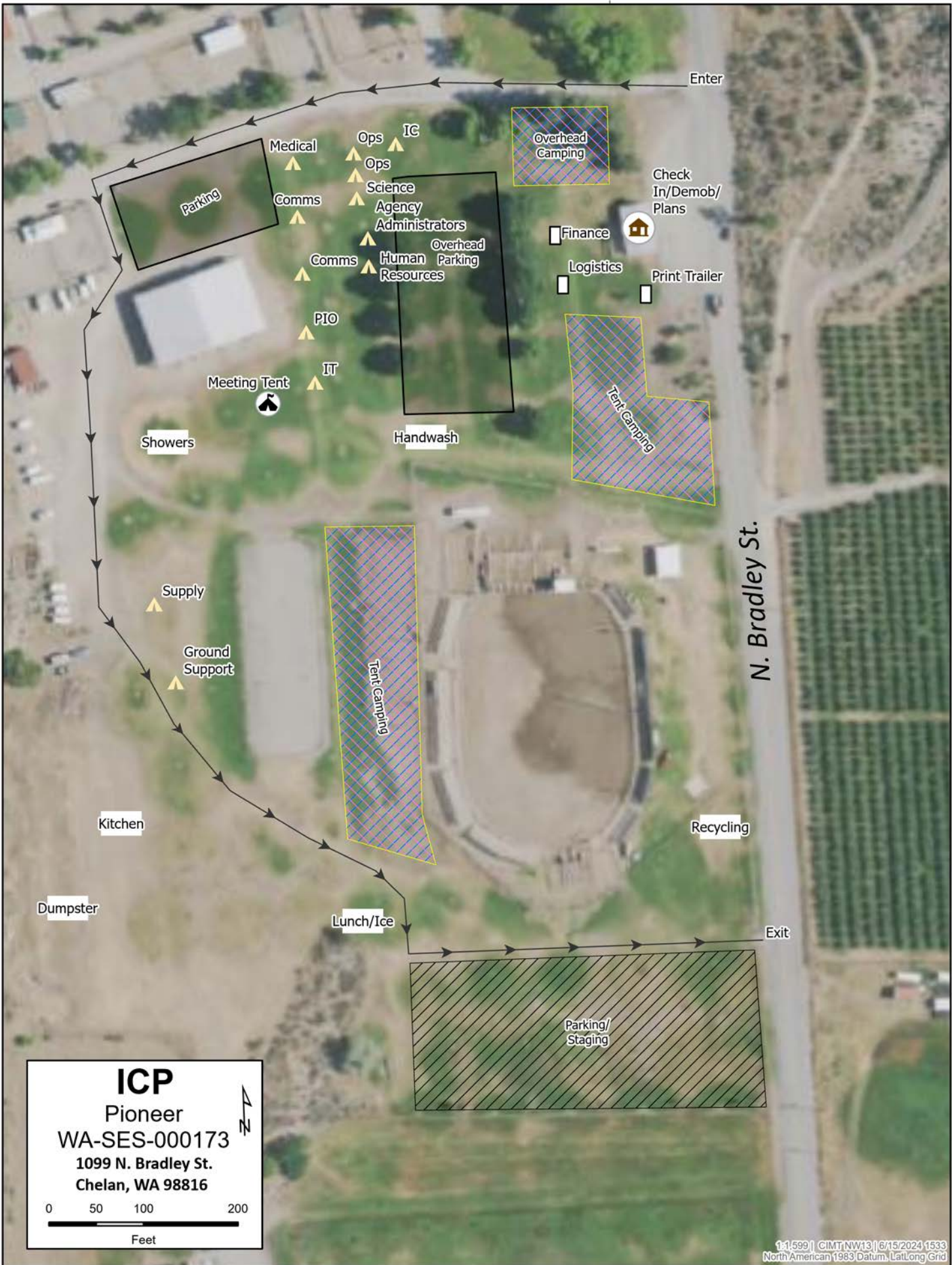
Check In/Demob: 509-661-5372

Medical: 360-775-5413

Supply: 360-827-5382

Ground Support: 425-274-6215

Finance: Equipment 208-891-6877 & TIME 208-891-8036





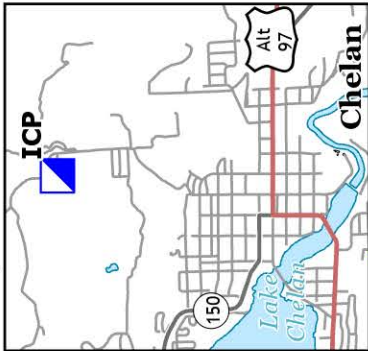
Pioneer

WA-SES-000173

06/17/2024 16hr

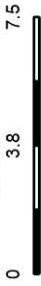
3811 acres on 6/16/2024 @ 1726

ICP: Chelan Rodeo Grounds
1099 N Bradley St.
Chelan, WA 98816



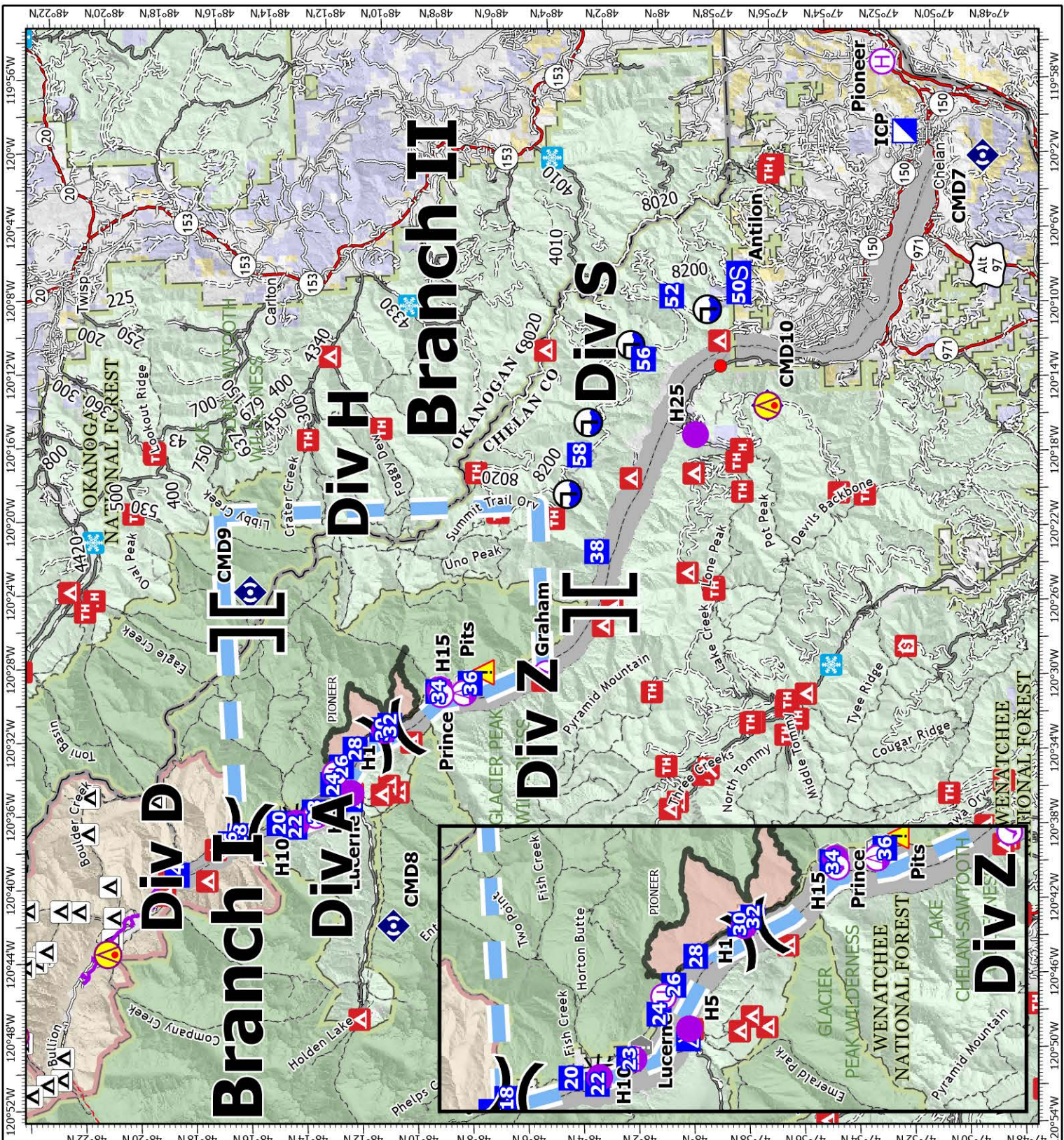
21

- Aerial Hazard
- Aviation Check Point
- Helipoint
- Helibase
- Sling Site
- Unimproved Landing Area
- Division Break
- Branch Break
- Incident Command Post
- Drop Point
- Camp
- Staging Area
- Value at Risk
- Landmark
- Repeater
- Hazard
- Draft Site
- Completed Fuel Break
- Completed Hand Line
- Completed Mined Construction Line
- Aerial Hazard
- Temporary Flight Restriction
- Wildfire Daily Fire Perimeter



Miles

1:355:106 | CMIT NW113 | 06/16/2024 2141
 Acres from ICP
 North American 1983 Datum. Lat/Long Grid



DIVISION PLANNING WORKSHEET

NEXT OPERATIONAL DATE

DIVISION/GROUP

NAME OF DIVISION/GROUP

ROLL OVER ASSIGNED RESOURCES

EXCESS RESOURCES

CORRECTION TO 204

E or C
NUMBER

RESOURCE DESIGNATOR

LEADER

NO.
PERSONS

COMMENTS

OPERATIONAL PROJECTION (Task, Purpose, End State) 24 hrs

OPERATIONAL PROJECTION (Task, Purpose, End State) 48 hrs

OPERATIONAL PROJECTION (Task, Purpose, End State) 72 hrs

REQUEST FOR ADDITIONAL RESOURCES

NUMBER

TYPE

RESOURCE KIND

DATE NEEDED

Critical Needs: If your resource request is critical, describe the mission and the duration resources are needed.

*

MEDICAL PLAN (206 WF)

1. Incident/Project Name				2. Operational Period				
Pioneer Fire				Date/Time: 06/17/24 0600-2200				
3. Ambulance Services								
Name	Complete Address	Phone	Advanced Life Support (ALS)					
Lake Chelan EMS	Chelan, WA	911	Yes	No		X		
4. Air Ambulance Services								
Name	Phone/Channel	Frequency, Type of Aircraft & Capability						
Life Flight- Brewster	1-800-232-0911 911	VMED 29, Rotor, ALS, 24 hr						
Airlift NW- Wenatchee	1-800-426-2430 911	VMED 29, Rotor, ALS, 24 hr						
Wenatchee Short Haul- Chelan Airport	Command 7,8,9,10 (Linked)	VMED 29, Rotor, BLS, Daytime, Short haul						
Snohawk 10- Snohomish	1-800-258-5990 911	VMED 29, Rotor, ALS, Daytime, Hoist						
Spokane County Hoist- Spokane	1-509-532-8930 911	VMED 29, Rotor, ALS, 24 hr, Hoist Daytime only						
5. Hospitals								
Name	Degrees Decimal Minutes		Travel Time From Fire		Phone	Helipad		Level of Care
			Air	Boat		Yes	No	
Lake Chelan Health 110 S. Apple Blossom Drive Chelan WA	Lat: 47° 50' 20 N Long: 119° 59' 20 W	30 Min	3 Hr	509-683-2474		X	Level IV Trauma	
Central Washington Hospital 1201 S. Miller Wenatchee WA	Lat: 47° 24. 43 N Long: 120° 19. 28 W	1 Hr	4 Hr	509-433-3115	X		Level II Trauma	
Harborview Medical Center 325 9 th Ave Seattle WA	Lat: 47° 36. 24 N Long: 122° 19. 45 W	1.5 Hr	6 Hr	206-744-4025	X		Level I Trauma Burn Center	
ICP	EMS Responders & Capability:			James Brown MEDL/Paramedic 360-775-5413				
	Equipment Available on Scene:			ALS Kit, AED, O2, OTC meds				
	Medical Emergency Channel:			Command 7,8,9,10 (Linked)				
	ETA for Ambulance to Scene:							
	Air:			NA				
	Ground:			15 Min				
	Approved Heli-Spot:			NA				
	Lat:			NA				
Long:			NA					
LUCERNE FOB	EMS Responders & Capability:			Ben Meacham MEDL/EMTF 360-921-3817				
	Equipment Available on Scene:			BLS Kit, OTC meds				
	Medical Emergency Channel:			Command 7,8,9,10 (Linked)				
	ETA for Ambulance to Scene:							
	Air:			2 hr				
	Water/Ground:			3 hr				
	Approved Heli-Spot:							
	Lat:			H-5 48° 12.1624 N				
Long:			120° 35.4476 W					
BRANCH I	EMS Responders & Capability:			MEDIC 4 Nathan Etherington (DP-36) 360-969-1251 MEDIC 1 Remington Becker (DP-30) 360-903-8612 MEDIC 3 Adam Lathrop (Moore Point) 425-531-0469				
	Equipment Available on Scene:			ALS Kit, Cardiac Monitor/Defib, O2, Rescue gear				
	Medical Emergency Channel:			Command 7,8,9,10 (Linked)				
	ETA for Ambulance to Scene:							
	Air:			2 hr				
	Water/Ground:			3 hr				
	Approved Heli-Spot:							
	H-1 48° 10.813 N 120° 31.9242 W			H-5 48° 12.1624 N 120° 35.4476 W				
BRANCH II	EMS Responders & Capability:			MEDIC 2 Joel Bower (Snow Park) Gold CK 360-461-7390 MEDIC 5 Brian Linacre (Snow Park) Gold CK 301-781-7990 REMS 1 Caitlin Lucia +3 DIVS S 443-699-2512				
	Equipment Available on Scene:			ALS Kit, Monitor, Defib, O2				
	Medical Emergency Channel:			Command 7,8,9,10 (Linked)				
	ETA for Ambulance to Scene:							
	Air:			2 hr				
	Ground:			3 hr				
	Approved Heli-Spot:			NA				
	Lat:			NA				
Long:			NA					

Prepared By (Medical Unit Leader)	Date	Reviewed By (Safety Officer)	Date
James Brown MEDL Signature: <i>James Brown</i>	06/16/24	Ray Hershey SOF2 Signature: <i>Ray Hershey</i>	06/16/24

MEDICAL PLAN (ICS 206 WF)

Controlled Unclassified Information//Basic

Medical Incident Report

FOR A NON-EMERGENCY INCIDENT, WORK THROUGH CHAIN OF COMMAND TO REPORT AND TRANSPORT INJURED PERSONNEL AS NECESSARY.

FOR A MEDICAL EMERGENCY: IDENTIFY ON-SCENE INCIDENT COMMANDER BY NAME AND POSITION AND ANNOUNCE "MEDICAL EMERGENCY" TO INITIATE RESPONSE FROM IMT COMMUNICATIONS/DISPATCH.

Use the following items to communicate situation to communications/dispatch.

1. CONTACT COMMUNICATIONS / DISPATCH (Verify correct frequency prior to starting report)

Ex: "Communications, Div. Alpha. Stand-by for Emergency Traffic."

2. INCIDENT STATUS: Provide incident summary (including number of patients) and command structure.

Ex: "Communications, I have a Red priority patient, unconscious, struck by a falling tree. Requesting air ambulance to Forest Road 1 at (Lat./Long.) This will be the Trout Meadow Medical, IC is TFLD Jones. EMT Smith is providing medical care."

Severity of Emergency / Transport Priority	<input type="checkbox"/> RED / PRIORITY 1 Life or limb threatening injury or illness. Evacuation need is IMMEDIATE <i>Ex: Unconscious, difficulty breathing, bleeding severely, 2° – 3° burns more than 4 palm sizes, heat stroke, disoriented.</i> <input type="checkbox"/> YELLOW / PRIORITY 2 Serious Injury or illness. Evacuation may be DELAYED if necessary. <i>Ex: Significant trauma, unable to walk, 2° – 3° burns not more than 1-3 palm sizes.</i> <input type="checkbox"/> GREEN / PRIORITY 3 Minor Injury or illness. Non-Emergency transport <i>Ex: Sprains, strains, minor heat-related illness.</i>	
Nature of Injury or Illness & Mechanism of Injury		<i>Brief Summary of Injury or Illness (Ex: Unconscious, Struck by Falling Tree)</i>
Evacuation Request		<i>Air Ambulance / Short Haul/Hoist Ground Ambulance / Other</i>
Patient Location		<i>Descriptive Location & Lat. / Long. (WGS84)</i>
Incident Name		<i>Geographic Name + Medical (Ex: Trout Meadow Medical)</i>
On-Scene Incident Commander		<i>Name of on-scene IC of Incident within an Incident (Ex: TFLD Jones)</i>
Patient Care		<i>Name of Care Provider (Ex: EMT Smith)</i>

3. INITIAL PATIENT ASSESSMENT: Complete this section for each patient as applicable (start with the most severe patient)

Patient Assessment: See IRPG PAGE 106

Treatment:

4. EVACUATION PLAN:

Evacuation Location (if different): (Descriptive Location (drop point, intersection, etc.) or Lat. / Long.) Patient's ETA to Evacuation Location:

Helispot / Extraction Site Size and Hazards:

5. ADDITIONAL RESOURCES / EQUIPMENT NEEDS:

Example: Paramedic/EMT, crews, immobilization devices, AED, oxygen, trauma bag, IV/fluid(s), splints, rope rescue, wheeled litter, HAZMAT, extrication

6. COMMUNICATIONS: Identify State Air/Ground EMS Frequencies and Hospital Contacts as applicable

Function	Channel Name/Number	Receive (RX)	Tone/NAC *	Transmit (TX)	Tone/NAC *
COMMAND					
AIR-TO-GRND					
TACTICAL					

7. CONTINGENCY: Considerations: If primary options fail, what actions can be implemented in conjunction with primary evacuation method? Be thinking ahead..

8. ADDITIONAL INFORMATION: Updates/Changes, etc.

REMEMBER: Confirm ETAs of resources ordered. Act according to your level of training. Be Alert. Keep Calm. Think Clearly. Act Decisively.