

FINANCE MESSAGE

Finance Email: 2024.pioneer.finance@firenet.gov

Finance Phones: *Equipment (208) 891-6877 & TIME (208) 891-8036*

This incident requires electronic documentation. Please email your time to the address above. Scanned PDF's please, no .JPG's. Feel free to call finance for help if needed. Scanners are also available at ICP.

Required Documents

Overhead, Agency Crews & Cooperators	Contract Resources
Finance docs needed: Resource Order, Manifest, Cooperative Agreement, Casual Hire Form w/ECI# (as applicable)	Finance docs needed: Resource Order, Manifest, Full Contract/Agreement, Certifications (<i>if required</i>) Pre-Inspection
Daily: CTRs, Shift Tickets	Daily: CTRs, Shift Tickets, receipts (claims, etc.) NOTE: Document travel times and odometer readings
Demob: Signed OF-288; Signed OF-286	Demob: Contractor Evaluations, Shift Tickets, receipt(s) for Addition/Deductions, Post-Inspection, Signed OF-286
<p>"H-Pay"- Entitlement to Hazardous Pay Differential (5 CFR 550.904) – Hazard pay MUST be supported by a justification. If justification is not provided, you chance losing your entitlement.</p>	<p>Please call finance regarding issues with your time: E-95 WW Pumping E-104 Havillah Logging E-75 David Rains</p>

Incident Name: **Pioneer**


Incident Number: **WA-SES-000173**

CORRECTED

Please make sure you check in using QR code on the front of the IAP and then email your time daily.

THANK YOU!!

CHECK-IN	DEMOB
<p>Please complete the virtual check-in process via the QR code on the front cover.</p> <p>You are not checked in until you provide the following:</p> <ul style="list-style-type: none"> • Red Cards • Roster/Manifest <p>Please email documents to: 2024.pioneer.demob@firenet.gov</p>	<p>Fliers complete the "Air Travel Request" via the QR code on the front cover 72 hours prior to flight date.</p> <ul style="list-style-type: none"> • Return supplies to the Cache • Return radios, antennas, etc., to Communications • Contact Finance about closing out your paperwork <p>Once the above items have been completed, SCAN the QR code on the front cover and complete the demob questions.</p>
<p>If you have any questions about Check-In or DEMOB please email demob at 2024.pioneer.demob@firenet.gov or call 509-661-5372. Please include your request number in the subject line when emailing.</p>	

INCIDENT OBJECTIVES	1. Incident Name Pioneer	2. Date June 20, 2024	3. Time 2000
4. Operational Period: 06/21 0600-2200			
5. General Objectives: Implement suppression strategies and objectives for short/long-term planning. <ul style="list-style-type: none"> • Provide for firefighter and public safety through hazard identification and application of a shared risk management process. • Coordinate public information to provide timely updates to agency partners, cooperators, and the public. • Coordinate suppression activities with READs to identify current and future impacts on the landscape. • Effectively manage and track costs with daily IAP reporting. • Coordinate with agency leadership/administrators to ensure effective and efficient management of firefighting resources. • Identify best course of action for firefighter support, both logistically and operationally. Operational objectives: <ul style="list-style-type: none"> • Implement a point protection strategy to protect private and federal infrastructure. • Triage additional infrastructure within fire planning area to minimize the potential impact to these sites. • Communicate with local law enforcement officials to ensure current and potential evacuations is coordinated. • Evaluate current fire conditions, identify/utilize features that could lead to fire growth, and validate strategic indirect (new/historical) control lines. • Utilize appropriate tactics for current/future fire environment and the predominantly wilderness landscape. • Develop a long-term strategic plan for suppression of the incident. 			
5a. Incident Requirements <ul style="list-style-type: none"> • Provide Agency Administrator updates and briefings on incident status. • Firefighting operations will implement tactics that offer the highest probability of success to minimize impacts to the landscape and minimize unnecessary exposure to firefighters. • Incident values are firefighter and public safety, critical infrastructure, private land and natural resources. 			
5b. Leaders Intent <ul style="list-style-type: none"> • Safety: Firefighter, public, boat and aviation safety will be addressed through DRA process. • ISAP: Engage agencies with strategic alignment process, for shared values at risk. • Communications: Keep Agency Administrators and firefighters informed of strategic actions, accomplishments, and challenges. • Operations: Make informed strategic/tactical decisions; suppressing the fire in the most geographic locations with the appropriate resources and highest probability of success. • Stakeholders: Collaborate with local partners, officials, and land owners to provide situational updates pertinent to the fire. • Logistics: Provide support ensuring food, water, and shelter for incident responders. • Human Resources: Ensure that all incident personnel are treated with dignity and respect, while having zero tolerance for harassment, alcohol, or illegal drug use. • Public Information: Provide timely and accurate information through media outlets, briefings, and social platforms as needed. • Finance: Monitor and communicate incident cost associated with meeting incident objectives. • Planning: Provide incident documentation, resource tracking, and meeting management. 			
6. Weather Forecast & General Safety Message for Period – See Attached			
7. Attachments (mark if attached)			
<input checked="" type="checkbox"/> Organization List - ICS 203	<input checked="" type="checkbox"/> Weather Forecast	<input checked="" type="checkbox"/> Safety Message	
<input checked="" type="checkbox"/> Div. Assignment Lists - ICS204	<input checked="" type="checkbox"/> Fire Behavior Forecast	<input type="checkbox"/> Medical Emergency Com Plan	
<input checked="" type="checkbox"/> Communications Plan - ICS 205	<input checked="" type="checkbox"/> Incident Map	<input type="checkbox"/>	
<input checked="" type="checkbox"/> Medical Plan - ICS 206	<input checked="" type="checkbox"/> Air Operations - ICS 220	<input type="checkbox"/>	
9. Prepared by Aileen Nichols	9. Approved by (Incident Commander) Brian Galea 		

ORGANIZATION ASSIGNMENT LIST	
1. Incident Name Pioneer	
2. Date June 20, 2024	3. Time 1830
4. Operational Period June 21, 2024 0600-2200	
Position	Name
CIMTNW13 LWD 6/24/2024	
5. Incident Commander and Staff	
Incident Commander	Brian Gales (O-8.1)
Deputy Incident Commander	Eric Riener (O-8.2)
Liaison Officer	Bill Neckels (O-8.3)
ISAP	Robert Burnside (O-14)
Information Officer	Eric Waters (O-8.5)
Safety Officer	Ray Hershey (O-8.4)
Safety Officer - t	Jeremiah Maghan (O-62)
Human Resources	Margaret Dietrich (O-109)
6. Agency/Organization Representative(s):	
USFS Oak/Wen Agency Administrator	Kari Grover-Wier
USFS Oak/Wen Agency Administrator - t	Paul Willard
DNR Agency Administrator	Larry Leach
DNR Deputy Agency Administrator	Wyatt Leighton
NPS Agency Administrator	Don Striker
NPS Agency Representative	Ash Rawhouser
NPS FMO	Matt Ellis
USFS LEAD READ	Brigitte Ranne
NPS LEAD READ	Edward Duke
REAF	Director Rodriguez
REAF	ream Pederson
7. Planning Section	
Plans Chief	Aileen Nichols (O-8.14)
Resources Unit	Meredith Butcher (O-8.15)
Status Check-In/ Demob Unit	Laura Backlund (O-8.20)
Situation Unit	Laurie Bergvall (O-8.18)
Fire Behavior Analyst	Dean Warner (O-8.19)
Fire Behavior Analyst - Lucerne	Steve Ziel (O-72)
Incident Meteorologist	Trent Smith (O-58)
Documentation Unit - Virtual	Deidre Smith (O-59)
GIS Specialist	Austin Lewandowski (O-50)
GIS Specialist	Josh Serfass (O-100)
Computer Specialist	Dave Johnson (O-8.17)
Air Resource Advisor	Seth Morphsis (O-108)
Strategic Operational Planner	Mark Johnson (O-74)
8. Logistics Section	
Logistics Chief	Bryan Swanberg (O-8.22)
Deputy Logistics Chief - Lucerne	Cindy Preston (O-8.21)
Deputy Logistics Chief	Dave Willis (O-8.23)
Supply Unit Leader	Jon Byerly (O-8.25)
Ordering Manager	Robert Yarnall (O-8.30)
Communications Unit Ldr	Jarrod Nordloh (O-132)
Incident Comm Mgr	Trina Contreras (O-8.31)
Com Tech	Brian Wolfenburger (O-8.32)
Food Unit Leader	Pat Young (O-8.26)
Facilities Unit Leader	Keith Yonaka (O-8.24)
Medical Unit Leader - ICP	James Brown (O-8.28)

Medical Unit Leader - Lucerne	Ben Meacham (O-118)	
Ground Support Unit	William Braddy (O-8.29)	
Receiving/Distribution Mgr - t	Karl Peterson (O-31)	
Base Camp Manager	Carl Schilter (O-12)	
Security Manager	Chris Dodds (O-11)	
Equipment Manager	Charlie Carmichael (O-23)	
9. Operations Section		
Operations (Field)	John Spencer (O-8.6) Whitney Machado - t (O-8.41)	
Operations (Planning)	Tom Hall (O-13)	
Operations	Brad Reed (O-8.9)	
Division Supervisor	H	Rob Poyner (O-135)
Group Supervisor	Boat	Charlie Cronk (O-24)
a. Branch I		
Branch Director		Matt James (O-15)
Division Supervisor	A	Erik Thorp (O-53) Chris Carr - t (O-54)
Division Supervisor	Z	Robert Boles (O-8.13) Pat Chism - t (O-26)
b. Branch II		
Branch Director		Thom Taylor (O-150)
Division Supervisor	D	Ben Lippert (O-103) Silas Baffa - t (O-107)
c. Branch V		
Branch Director		Spencer Gregory (O-16)
Division Supervisor	C	Anna Graves (O-8.10) Jaeger Holt (O-10.1)
Group Supervisor	Roads	Andy Hall (O-106) Aaron Bruning - t (O-69)
d. Air Operations Branch		
Air Operations	Nancy Barker (O-8.8)	
Air Support Group	David Moore (O-102)	
Helibase Manager	Jerry Rule (O-86)	
10. Finance Section		
Finance Chief	Veronika Klukas (O-8.33)	
Deputy Finance Chief	Paula James (O-8.34)	
Cost Unit - Virtual	Lori Price (O-8.35)	
TIME Unit	Heather Fitzpatrick (O-8.38)	
Proc Unit Leader	Eric Soto (O-8.37)	
COMPS/CLAIMS	Laurette Gaylord (O-45)	
Personnel Time Recorder - t	Jordan Allen-Flowers (O-47)	
Incident Cont. Project Insp	Stan Zazado (O-8.39)	
In-Box Manager/PTRC	Emily Cohn (O-46)	
PREPARED BY: Meredith Butcher		



Fire Weather Forecast



FORECAST NO: 09
PREDICTION FOR: 24 Hr Shift
SHIFT DATE: Friday 6/21/2024
TIME AND DATE ISSUED: 6/20/2024 1800 hrs

INCIDENT: Pioneer Fire
SIGNED: Trent Smith *Trent R. Smith*
 Incident Meteorologist (IMET)

Discussion: A low amplitude ridge of high pressure will be moving over the region today through Saturday. Temperatures will continue to warm slightly with humidity readings in the teens to low 20% range in the afternoon. The winds will become northwesterly during the afternoon.

WEATHER FORECAST FOR TODAY:

SKY/WEATHER: Sunny becoming partly cloudy in the afternoon.
MAX TEMPERATURE: 82 to 87.
MIN RH: 17 to 23 percent.
20 FT WINDS:
Lower Valleys: Terrain 3 to 8 mph becoming northwest 5 to 10 mph gusts to 15 mph in the afternoon.
Mid-slopes and Ridges: Terrain 3 to 8 mph becoming northwest 8 to 13 mph gusts to 23 mph in the afternoon.
HAINES INDEX: 3 Very Low: Stability-2 & Moisture-1 **TRANSPORT WINDS:** W 11 mph.
INVERSION: 500 ft inversion starting to lift at 0900 with a max of 9000 ft by 1300.

TONIGHT:

SKY/WEATHER: Partly cloudy becoming mostly cloudy.
MIN TEMPERATURE: 60 to 65.
MAX RH: Valley 55 to 60 percent; Midslope/Ridges 38 to 43 percent.
20 FT WINDS:
Valleys/Lower Slopes: Northwest to 10 mph with gusts to 15 mph then terrain driven around 5 mph after midnight.
Mid-Slopes and Ridges: Northwest 5 to 10 mph with gusts to 20 mph then terrain driven around 5 mph after midnight.
INVERSION: Developing after 2000 hrs near 500 ft.

SATURDAY:

SKY/WEATHER: Mostly cloudy becoming partly cloudy in the afternoon.
MAX TEMPERATURE: High 83 to 88.
MIN RH: 20 to 25 percent.
20 FT WINDS:
Lower Valleys: Terrain driven 3 to 7 mph becoming northwest 5 to 10 mph with gusts to 20 mph in the afternoon.
Mid-slopes and Ridges: Terrain driven 3 to 8 mph becoming northwest 10 to 15 mph with gusts to 25 mph in the afternoon.
HAINES INDEX: 3 Very Low. **TRANSPORT WINDS:** SW 15 mph.

Yesterdays observations thru 1700	Min Temp	Max RH	Max Temp	Min RH	Peak Wind	Precipitation
Stehekin RAWS (1230')	47	83%	86	16%	12 mph	0.00
Lake Chelan Airport (1260')	55	54%	82	13%	7 mph	N/A
Entiat RAWS (2825')	57	56%	84	16%	13 mph	0.00
Camp 4 RAWS (3156')	53	57%	82	17%	18 mph	0.00

Weather observations can be texted to 406-360-6330 or emailed to trent.smith@noaa.gov

Fire Behavior Forecast # 10

Name of Incident: Pioneer Fire WA-SES-000173	Administrative Unit: SE Region DNR / Okanagan-Wenatchee NF
Date & Time Issued: 1900 – 6/20/2024	Operational Period: Day 6/21/2024
FBAN: Dean Warner	Signed:
Weather Summary - See attached Pioneer Fire Weather Forecast. Warming and drying trend with NW winds.	

Fire Behavior Summary

General – <u>Spotting potential:</u> 0.25 + mi. <u>Probability of Ignition:</u> 60% <u>Haines Index:</u> 4 (low) LAL: 1 <u>ERC – Y:</u> 41 (76 percentile)	FUEL MODEL	Maximum ROS	Backing ROS	Maximum Flame length	Backing Flame length
	GR2 - Moderate load grass shrub	4 ch/hr	1 ch/hr	1 feet	1 feet
	SH2 - Moderate load shrub	4 ch/hr	2 ch/hr	2 feet	1 feet
	TU5 – Very high load timber shrub	16 ch/hr	9 ch/hr	9 feet	2 feet
	TL8 – Long needle timber litter	13 ch/hr	5 ch/hr	5 feet	1 feet

GENERAL

Today's conditions will support very active fire behavior. The next couple of days bring a "warming and drying trend" ahead of a dry cold front that will pass Saturday into Sunday. NW winds will redevelop and continue to accelerate fire progression in the Cascade and upper Meadow Creek drainages. Fire is established in Meadow Creek on the north end; and on the slopes of Prince Creek at the south end of the fire. To the east, the fire continues to make progress up the ridge line of Skokholm Pass Mountain. Fire is spreading through backing/flanking with rollout on slopes with Lake winds. One quarter mile spotting has been observed under similar conditions.

CORRECTED

Topography: This fire lies on the north side of Lake Chelan on a dry southwest aspect. The Lake's influence dominates the fire environment due to winds. Natural barriers (rock outcrops and scree slopes) are present in the fire area. When slope reversals occur, expect even more dramatic difference in rates of spread than you would normally see. Rolling debris may enhance backing rates of spread.

Fuels: The fire is burning in the Rex Creek burn scar (2001). The 23 year old fire scar has left a mosaic of fuels including a moderate load of heavy fuels that are dry enough to sustain fire spread and retain heat. Rock outcrops provide breaks in fuel continuity. Curing dry grass and timber litter with downed material are the primary fuels promoting fire spread. There are snags and heavy fuel concentrations throughout the area.

ERC: Due to the time of year, Energy Release Component values remain below the 90th percentile. The dry southwest aspect, Lake winds, and steep slopes offer ample opportunity for this fire to outperform typical fire indices.

SPECIFIC

Div A: If the fire crosses to the north side of Meadow Creek, expect a slope reversal that will produce rapid upslope spread with fingering runs in fine fuels. Round Lake saddle may provide localized channeled winds.

Div Z: Expect fire to continue flanking and backing south toward Prince Creek. Monitor for localized erratic winds at Lake Chelan. Winds will favor progression towards Prince Creek. Potential for spotting across Prince Creek is best in the lower reaches of Price Creek.

Div. H, S, D: Should not be impacted by fire activity today, monitor weather, smoke and radio closely.

Air Ops/Smoke Dispersion

Lake wind may be strong causing turbulence. Smoke from active fire may impact visibility for air operations.

Safety

Watch Out Situations 14 and 15 are emphasized today: **Weather becoming hotter and drier. Wind increases and/or changes direction...** Very active fire behavior is expected today and tomorrow, prior to the cold front passage. Plan today for the wind event tomorrow. Know your location in relation to the fire. Ensure LCES is in place.

DIVISION ASSIGNMENT LIST			1. Branch I		2. Division A	
3. Incident Name Pioneer			4. Operational Period Date: 06/21/2024 Time: 0600-2200			
5. Operations Personnel						
Operations Chief		John Spencer Whitney Machado - t		Branch Director		Matt James
Safety Officer		Ray Hershey		Division Supervisor		Eric Thorp Chris Carr - t
6. Resources Assigned this Period						
Strike Team/Task Force/Resource Designator		Leader	# Persons	LWD	Drop Off PT./Time	Pick Up PT./Time
1	O-49 TFLD	Jeremy Zemke	1	6/26		
2	O-52 TFLD - t	Dante Ybarra	1	6/26		
3						
4	C-8 CRW1 Union IHC	Eric Jorgenson	25	6/27		
5	C-9 CRW1 Zigzag IHC	Sandra Sperry	25	6/28		
6	C-4 CRW1 LaGrande IHC	Juan Elquezabal	21	6/23		
7	C-2 CR2I Wenatchee River C74	Ben Marquart	15	6/24		
8						
9	O-67 MEDIC 3	Adam Lathrop	1	6/27		
10	O-137 EMT 3	James Franklin	1	7/1		
11	O-153 EMT 2	Aiden Noel	1	7/1		
12						
13	O-65 SOF2	Larry Wright	1	6/4		
14	O-175 SOFR	Melissa Moore	1	7/4		
15						
16						
17						
		Meal count	92			
7. Control Operations: Task: Contain fire spread to the northwest where terrain and fuels allow for highest probability of success. Assess fire perimeter progression to the north and east at higher elevations. Implement point protection efforts on federal & private infrastructure. Purpose: To slow fire progression, provide time for suppression tactics, and prep around critical values. End state: Minimize fire impacts to critical values including private inholdings and Forest Service infrastructure.						
8. Special Instructions: <ul style="list-style-type: none"> In large or long term spike camps use helicopters, boats, or pack stock to deliver portable backcountry latrines and remove human waste if necessary. If camp does not have adequate pack, boat, or air support for human waste management, establish community latrines well away from water sources and common areas. Use human waste bags, if necessary. Minimize ground disturbance on the Moore Point and Meadow Creek alluvial fans in order to protect sensitive resources. Ensure hazard mitigations and IWI protocols are in place before taking action. 						
9. Division/Group Communication Summary See Communications Plan						
Prepared by (Resource Unit Ldr) <i>Meredith Butcher</i>		Approved by (Planning Sect. Ch.) <i>Aileen Nichols</i>		Date 06/20/2024		Time 2000

CORRECTED

DIVISION ASSIGNMENT LIST			1. Branch I		2. Division Z	
3. Incident Name Pioneer			4. Operational Period Date: 06/21/2024 Time: 0600-2200			
5. Operations Personnel						
Operations Chief		John Spencer Whitney Machado - t		Branch Director		Matt James
Safety Officer		Ray Hershey		Division Supervisor		Robert Boles Pat Chism - t
6. Resources Assigned this Period						
Strike Team/Task Force/Resource Designator		Leader	# Persons	LWD	Drop Off PT./Time	Pick Up PT./Time
1	O-48 TFLD	Jeff Coburn	1	6/26		
2						
3	C-3 CRW1 Baker River IHC	Gary Chicks	23	6/22		
4	C-1 CRW2 DNR Crew 411	Bryan Lyle	16	6/21		
5	C-13 CRW1 Vale IHC	Glen Heitz	20	7/4		
6						
7	O-41 WFM1 Eagle Cap	Gabe Hale	10	6/25		
8						
9	A-23 Boise Helitack	Jacob Campbell	5	6/23		
10						
11	A-27 UR-31	Ryan Gregg	4	6/26		
12						
13	O-75 MEDIC 4	Nathan Emerington	1	6/23		
14	O-1 MEDIC 1	Ronson Be...	1	6/26		
15						
16	O-20 SOFR	Jeff Higans	1	6/21		
17						
18						
19						
20						
		Meal count	82			
7. Control Operations: Task: Contain fire spread to the southwest where terrain and fuels allow for high probability of success. Assess fire perimeter progression to the west/southwest at higher elevations. Purpose: To slow fire progression, provide time for suppression tactics, and prep around critical values. End state: Minimize fire impacts to critical values including private inholdings and Forest Service infrastructure.						
8. Special Instructions: <ul style="list-style-type: none"> In large or long term spike camps use helicopters, boats, or pack stock to deliver portable backcountry latrines and remove human waste if necessary. If camp does not have adequate pack, boat, or air support for human waste management, establish community latrines well away from water sources and common areas. Use human waste bags, if necessary. Ensure hazard mitigations and IWI protocols are in place before taking action. 						
9. Division/Group Communication Summary See Communications Plan						
Prepared by (Resource Unit Ldr) <i>Meredith Butcher</i>		Approved by (Planning Sect. Ch.) <i>Aileen Nichols</i>		Date 06/20/2024		Time 2000

CORRECTED

DIVISION ASSIGNMENT LIST			1. Branch II		2. Division D	
3. Incident Name Pioneer			4. Operational Period Date: 06/21/2024 Time: 0600-2200			
5. Operations Personnel						
Operations Chief		John Spencer Whitney Machado - t		Branch Director		Thom Taylor
Safety Officer		Ray Hershey		Division Supervisor		Ben Lippert Silas Baffa - t
6. Resources Assigned this Period						
Strike Team/Task Force/Resource Designator		Leader	# Persons	LWD	Drop Off PT./Time	Pick Up PT./Time
1	C-11 CRW1 Redmond IHC	Dave Varon	20	6/28		
2						
3	O-147 SMOD LNP CREW 76	Sara Martinez	7	7/3		
4	O-148 SMOD HVP CREW 1	Brent Webb	10	7/3		
5						
6	O-129 FELB	Mel Tenneson	1	7/1		
7	O-127 FMOD Rainstorm	Kendall Cain	2	7/1		
8	O-128 FMOD Rainstorm	Mike Lind	2	7/1		
9						
10						
11	O-142 SOF2	Kelly Jensen	1	7/1		
12						
13						
7. Control Operations Task: Evaluate and assess structures from Flick Creek to the community of Stehekin. Look for opportunities to contain fire spread in and around Flick Creek area where terrain and fuels allow for highest probability of success.						
Purpose: Minimize fire impacts to critical values including private inholdings, the town of Stehekin, and Forest Service infrastructure.						
End state: Critical values including private inholdings, the town of Stehekin, and Forest Service infrastructure are not impacted by the Pioneer fire, while minimizing fire impacts and acres burned utilizing historic wildfire control features and natural barriers.						
8. Special Instructions:						
<ul style="list-style-type: none"> In large or long term spike camps use helicopters, boats, or pack stock to deliver portable backcountry latrines and remove human waste if necessary. If camp does not have adequate pack, boat, or air support for human waste management, establish community latrines well away from water sources and common areas. Use human waste bags, if necessary. All operational personnel working on USFS lands will need to conduct a thorough inspection for invasive species seeds on bootlaces, clothing, and gear prior to entering NPS lands. Only fresh (direct from the cache) hose should be utilized on NPS lands to prevent the transport of invasive species seeds. Hose used on NPS lands should not be utilized on USFS lands and vice-versa to prevent the spread of invasive species seeds. Cargo loads being transported onto NPS lands should be inspected for invasive weed seed prior to flight. Ensure hazard mitigations and IWI protocols are in place before taking action. 						
9. Division/Group Communication Summary						
See Communications Plan						
Prepared by (Resource Unit Ldr) <i>Meredith Butcher</i>		Approved by (Planning Sect. Ch.) <i>Aileen Nichols</i>		Date 06/20/2024		Time 2000

CORRECTED

DIVISION ASSIGNMENT LIST			1. Branch V		2. Division S	
3. Incident Name Pioneer			4. Operational Period Date: 06/21/2024 Time: 0600-2200			
5. Operations Personnel						
Operations Chief		John Spencer Whitney Machado - t		Branch Director		Spencer Gregory
Safety Officer		Ray Hershey		Division Supervisor		Anna Graves Jaeger Holt - t
6. Resources Assigned this Period						
Strike Team/Task Force/Resource Designator	Leader	# Persons	LWD	Drop Off PT./Time	Pick Up PT./Time	
1 O-112 TFLD	David Ortlund	1	7/1	Camp 4 Spike	Camp 4 Spike	
2 O-113 TFLD - t	Gavin Young	1	7/1	Camp 4 Spike	Camp 4 Spike	
3 O-110 TFLD	Shane Clifton	1	6/30	Camp 4 Spike	Camp 4 Spike	
4 O-111 TFLD - t	Lars Olson	1	6/30	Camp 4 Spike	Camp 4 Spike	
5 O-115 HEQB	Garrett Hansen	1	6/30	Camp 4 Spike	Camp 4 Spike	
6 O-117 HEQB - t	Ian Fox	1	6/30	Camp 4 Spike	Camp 4 Spike	
7 O-130 FELB	Rob Winkler	1	7/2	Camp 4 Spike	Camp 4 Spike	
8						
9 O-126 FMOD Fire Contracting Serv.	Ethan Wilson	2	7/1	Camp 4 Spike	Camp 4 Spike	
10						
11 **C-10 CR2I Methow Valley IA	Benjamin Boucher	23	6/29	Camp 4 Spike	Camp 4 Spike	
12						
13 E-99 DZRS Batanelor Excavation	Jay Batchelor	2	6/30	Camp 4 Spike	Camp 4 Spike	
14 E-101 SKG2 N / Diesel Fuel	Justin Doster	2	7/3	Camp 4 Spike	Camp 4 Spike	
15 E-102 SKG2 Diesel Equipment	Justin Doster	2	7/3	Camp 4 Spike	Camp 4 Spike	
16 E-103 MBM2 Marcon Timber	Dave Landes	2	7/1	Camp 4 Spike	Camp 4 Spike	
17 E-104 MBM2 Havillah Logging	Albert Johnson	2	7/1	Camp 4 Spike	Camp 4 Spike	
18 E-105 MBM2 Justin Pitts	Justin Pitts	2	7/1	Camp 4 Spike	Camp 4 Spike	
19						
20 O-43 REMS 1	Caitlin Lucia	4	6/25	Camp 4 Spike	Camp 4 Spike	
21 O-141 SOFR	Kevin Pfister	1	7/2	Camp 4 Spike	Camp 4 Spike	
22 E-18, E-93, E-94 UTVs						
	Meal count	51				
7. Control Operations: Task: Implementation of control line along Coyote Ridge from the 8200 Rd to Lake Chelan. Purpose: To establish a barrier to stop fire progression to the east of Falls Creek. End state: Control line anchored from 8200 Rd to Lake Chelan.						
8. Special Instructions: <ul style="list-style-type: none"> Ensure hazard mitigations and IWI protocols are in place before taking action. ** Denotes available for Initial Attack.						
9. Division/Group Communication Summary See Communications Plan						
Prepared by (Resource Unit Ldr) <i>Meredith Butcher</i>		Approved by (Planning Sect. Ch.) <i>Aileen Nichols</i>		Date 06/20/2024	Time 2000	

DIVISION ASSIGNMENT LIST			1. Branch V		2. Group Roads	
3. Incident Name Pioneer			4. Operational Period Date: 06/21/2024 Time: 0600-2200			
5. Operations Personnel						
Operations Chief		John Spencer Whitney Machado - t		Branch Director		Spencer Gregory
Safety Officer		Ray Hershey		Division Supervisor		Andy Hall Aaron Bruning - t
6. Resources Assigned this Period						
Strike Team/Task Force/Resource Designator		Leader	# Persons	LWD	Drop Off PT./Time	Pick Up PT./Time
1	O-83 TFLD	Mark Lewis	1	6/29	ICP	ICP
2	O-114 HEQB	TJ Whitehall	1	7/1	ICP	ICP
3	O-116 HEQB - t	Tyler Meyer	1	6/30	ICP	ICP
4						
5	E-73 WTS1 Strand Tenders	Wade Strand	1	6/27	ICP	ICP
6	E-74 WTS2 MVP Team	Dale Conrad	1	6/27	ICP	ICP
7	E-75 WTS2 David Rains	Ron Laymance	1	6/27	ICP	ICP
8	E-78 WTS2 King Hydroseeding	Don Warden	1	6/27	ICP	ICP
9	E-83 WTS2 King Hydroseeding	Joseph Ivie	1	6/27	ICP	ICP
10	E-76 WTS2 Mountain View Wildfire	Wick Fife	1	7/1	ICP	ICP
11	E-71 GRD2 Pettet	Mark Rowe	2	6/27	ICP	ICP
12	E-72 GRD2 Scotts Excavating	Lucas Scott	2	6/27	ICP	ICP
13	E-100 DZR Douglas Logging	Steve Douglas	2	7/1	ICP	ICP
14	E-9 FTRA Morris Forestry	James Fox	2	6/29	ICP	ICP
15	**E-118 ENG6 Little Perseus	Thomas Logg	2	7/1	ICP	ICP
16	**E-117 ENG6 Wenatchee River	Nicholas Gonzales	5	7/3	ICP	ICP
17						
18	O-68 MEDIC 2	Joel Bower	1	6/26	ICP	ICP
19	O-76 MEDIC 5	Brian Linacre	1	6/30	ICP	ICP
20	O-85 SOFR	Andy Murrin	1	6/27	ICP	ICP
21	E-19 UTV					
22						
		Meal count	31			
7. Control Operations: Task: Prepare 8200 Rd (Grade Creek Rd) to be utilized for mobilization of division S resources. Purpose: The 8200 roadbed and shoulders are clear of hazards. Provide a safer travel route for responders. End state: 8200 Rd is graded and brushed from Mitchell Creek to Safety Harbor Creek.						
8. Special Instructions: <ul style="list-style-type: none"> • Ensure hazard mitigations and IWI protocols are in place before taking action. ** Denotes available for Initial Attack.						
9. Division/Group Communication Summary See Communications Plan						
Prepared by (Resource Unit Ldr) <i>Meredith Butcher</i>		Approved by (Planning Sect. Ch.) <i>Aileen Nichols</i>		Date 06/20/2024	Time 2000	

DIVISION ASSIGNMENT LIST			1. Branch		2. Division H	
3. Incident Name Pioneer			4. Operational Period Date: 06/21/2024 Time: 0600-2200			
5. Operations Personnel						
Operations Chief		John Spencer Whitney Machado - t		Branch Director		
Safety Officer		Ray Hershey		Division Supervisor		Rob Poyner
6. Resources Assigned this Period						
	Strike Team/Task Force/Resource Designator	Leader	# Persons	LWD	Drop Off PT./Time	Pick Up PT./Time
1						
2						
3						
4						
5						
6						
7						
8						
9						
10						
11						
12						
13						
14						
15						
16						
17						
18						
		Meal count				
7. Control Operations: Task: Complete a comprehensive inventory of critical values, proposed control line options to protect those values and the risk to responders associated with those actions in SA4. Purpose: To analyze the strategy as probability vs success. End state: A long term durable strategic plan for the Pioneer Fire.						
8. Special Instructions: <ul style="list-style-type: none"> In large or long term spike camps use helicopters, boats, or pack stock to deliver portable backcountry latrines and remove human waste if necessary. If camp does not have adequate pack, boat, or air support for human waste management, establish community latrines well away from water sources and common areas. Use human waste bags, if necessary. Ensure hazard mitigations and IWI protocols are in place before taking action. 						
9. Division/Group Communication Summary See Communications Plan						
Prepared by (Resource Unit Ldr) <i>Meredith Butcher</i>		Approved by (Planning Sect. Ch.) <i>Aileen Nichols</i>		Date 06/20/2024	Time 2000	

CORRECTED

DIVISION ASSIGNMENT LIST				1. Branch		2. Group Boat	
3. Incident Name Pioneer				4. Operational Period Date: 06/21/2024 Time: 0600-2200			
5. Operations Personnel							
Operations Chief		John Spencer Whitney Machado - t		Branch Director			
Safety Officer		Ray Hershey		Division Supervisor		Charlie Cronk	
6. Resources Assigned this Period							
Strike Team/Task Force/Resource Designator		Leader	# Persons	LWD	Drop Off PT./Time		Pick Up PT./Time
1	O-50 TFLD Boat Coordinator		Todd Olson	1	6/26	Lucerne	Lucerne
2	O-161 TFLD		Cameron Chambers	1	7/3	Lucerne	Lucerne
3	O-160 TFLD		Brian Turner	1	7/3	ICP	ICP
4	O-162 HEQB		Nicolas Glatt	1	7/3	ICP	ICP
5	O-163 HEQB-t		Emma Ahlrichs	1	7/3	Lucerne	Lucerne
6							
7	E-1 TBOT WA-NCP			1			
8	E-3 TBOT Chelan Co. F&R#7			2			
9	E-4 TBOT Mountain Barge Services			1			
10	E-12 TBOT WA-OWF Chelan RD			1			
11	E-91 TBOT DNR Mud Puppy			1			
12	E-98 TBOT Chelan County Sheriffs			1			
13							
14							
15	O-36 MEDIC		Steve Medina	1	7/1		
16	O-122 EM 1		Ivan Hulc	1	7/1		
17							
18							
19							
			Meal count	14			
7. Control Operations: Task: Boats will support firefighters with logistical capability and capacity. Purpose: Supporting lakeside incident objectives requires firefighter mobility via boats. End state: Firefighters are supported by boat availability and ready site access.							
8. Special Instructions: <ul style="list-style-type: none"> In large or long term spike camps use helicopters, boats, or pack stock to deliver portable backcountry latrines and remove human waste if necessary. If camp does not have adequate pack, boat, or air support for human waste management, establish community latrines well aay from water sources and common areas. Use human waste bags, if necessary. Boat Coordinator will be located at Fields Point. Ensure hazard mitigations and IWI protocols are in place before taking action. 							
9. Division/Group Communication Summary See Communications Plan							
Prepared by (Resource Unit Ldr) <i>Meredith Butcher</i>			Approved by (Planning Sect. Ch.) <i>Aileen Nichols</i>			Date 06/20/2024	Time 2000

CORRECTED

AIR OPERATIONS SUMMARY ICS-220													
Incident Name / Number		Sunrise		Sunset		Airport		Time Prepared					
Pioneer / WA-SES-000173		05:01		21:02		S10		18:00					
Prepared By		Date Prepared		Operational Period - Date		Operational Period - Time		Remarks					
Nancy Barker AOB		6/20/2024		6/21/2024		0600-2200		Mediac Ship Information					
<p>General Remarks, Safety Notes, Hazards, Air Operations Special Equipment, etc.</p> <p>Pioneer/ Helibase Location: 47° 11.96 N 119° 03.56 W Phone: (509) 473-2165</p> <p>Helisites H1 48 10.755N / 120 31.803W H5 48 12.162N / 120 35.447W H10 48 14.050N / 120 36.461W H12 48 13.325N / 120 35.908W H15 48 08.754N / 120 29.813W H16 48 07.74N / 120 29.55W H25 47 59.212N / 120 16.526W</p> <p>Stehkin AP 48 20.75N / 120 43.25W</p>													
<p>Order All Aircraft through Command to Helibase. Sanitize Buckets before changing water sources. *Clear drop area/line before initiating drop sequence. *All GPS is to be collected in DMM</p> <p>*Aviation daily cost to: 2024.pioneer.finance@firenet.gov *Aviation daily cost to: pioneer/helibase2024@gmail.com</p>													
Incident Frequencies	RX	Tone	TX	Tone	AM/FM	Position	Name	Phone	EQUIPMENT/SUPPLIES				
Air to Air Primary (A-8)	123.4000		123.4000		AM	AOBD	Nancy Barker	(253) 312-4301	Com Trailer E-20				
Air to Air Secondary (A-9)	118.2750		118.2750		FM	SGS	Dave Moore	(513) 616-9192	Hand Wash Station E-47				
A/G Pri Tactical (A-10)	169.1500		169.1500		FM	AGS-T	Ben Thayer	(208) 830-1636	Water Tender E-77				
A/G Sec Operational (A-11)	168.4000		168.4000		FM	HBM-T	Ben Wagner	(206) 473-2165	Water Tender E-14				
A/G 3 Logs (A-47)	166.6125		166.6125		FM	EBM	Jerry Rule	(253) 548-7711					
					FM	ATGS	Jerry Messenger	(541) 306-0907					
					FM	HICO	Chad Bergren	(541) 219-2594					
DECK	163.1000		163.1000		FM	CO-T	Callan Wilkins	(509) 899-3876					
COMMAND						AS	Ryan Gregg	(360) 852-2296					
AIR GUARD	168.6250		168.6250	110.9	FM	MICC	Aircraft Desk	(509) 884-3473 x2					
VMED 29	155.3475	156.7	155.3475	156.7	FM	UAO	Cory Dolberry	(509) 668-2801					
HELICOPTERS - Assigned													
FAA #	TYPE	Make/Model	Helibase	Start	Avail	Remarks	AA #	TYPE	Make/Model	Airport	Start	Avail	Remarks
HB-16FH (A-22)	1	UH-60	Chelan	0800	0900	BKT/LL	H-05TK	2	Bell 205A	Chelan	0800	0900	Rapps
HB-17FH (A-23)	1	UH-60A	Chelan	0800	0900	BKT/LL							
HB-161KA (A-24)	1	K-1200	Chelan	0800	0900	BKT/LL							
HB-344RA (A-45)	1	CH-47D	Chelan	0800	0900	BKT/LL							
H-304HA (A-31)	2	Bell 205A	Chelan	0800	0900	Out of Service-Med							
H-407RL (A-1)	3	407	Chelan	0800	0900	Wenatchee Shorehaul							
H-684H (A-46)	3	407	Chelan	0800	0900	BKT/LL/Recon/Haul							
H-544AS (A-60)	3	AS350B3	Chelan	0800	0900	HICO/Recon							
HELICOPTERS - GACC Prepo													
Call Sign	Type	Make/Model	Base	Start	Avail	Remarks	AA #	Call Sign	Make/Model	Base	Start	Avail	Remarks
UR-31	3	AtlatX	Lucerne	0600	2200	IR/PSD	H-06DV (A-42)	610	Commander	WEN	0900	1000	Assigned ATGS
							H-544AS (A-60)	4AS	AS350B3	Chelan	0800	0900	Assigned HICO
							N-197GB	617	Commander	Chelan	0900	1000	Wenatchee IA (not assigned)
FIXED WING AA/HICO													

CORRECTED

INCIDENT RADIO COMMUNICATIONS PLAN (ICS 205)

Controlled Unclassified Information//Basic

1. Incident Name:		2. Date/Time Prepared:		3. Operational Period:						
PIONEER		Date: 06/20/2024 Time: 16:40		Date/Time From: 06/21/2024 0600 Date/Time To: 06/22/2024 0600						
4. Basic Radio Channel Use:										
Zone Group	Ch #	Function	Channel Name/Trunked Radio	Assignment	RX Freq	RX Tone/NAC	TX Freq	TX Tone/NAC	Mode (A, D, or M)	Remarks
	1	TACTICAL	TAC 1	DIV A	168.0500	123.0	168.0500	123.0	A	
	2	TACTICAL	TAC 2	DIV D & S	168.2000	123.0	168.2000	123.0	A	USE LOW PWR ON RIDGES
	3	TACTICAL	TAC 3	DIV Z	168.6000	123.0	168.6000	123.0	A	
	4	TACTICAL	TAC 4	DIV H	166.7250	123.0	166.7250	123.0	A	
	5	TACTICAL	TAC 5	ROADS	166.7750	123.0	166.7750	123.0	A	
	6	TACTICAL	TAC 6	BOAT	168.2500	123.0	168.2500	123.0	A	
	7	COMMAND	CMD 7	ALL	168.4750	123.0	165.4000	123.0	A	CHELAN BUTTE
	8	COMMAND	CMD 8	ALL	169.5375	123.0	164.7125	123.0	A	OLD MAID MT.
	9	COMMAND	CMD 9	ALL	160.4500	123.0	168.1000	123.0	A	MOORE MT.
	10	COMMAND	CMD 10	ALL	169.0125	123.0	165.2500	123.0	A	SLIDE RIDGE
	11	COMMAND	CMD 11	ALL	160.4125	123.0	165.9625	123.0	A	NOT ACTIVE / FOX MT.
	12	TACTICAL	A/G PRI	ALL DIVS	169.1500	000.0	169.1500	000.0	A	
	13	AIR TO GROUND	A/G SEC	ALL DIVS	166.4000	000.0	168.4000	000.0	A	
	14	AIR TO GROUND	A/G 3	ALL DIVS	166.6125	000.0	166.6125	000.0	A	
	15	AIR TO GROUND	V/MED 29	ALL DIVS	155.3475	156.7	155.3475	156.7	A	AIR EMS COORDINATION
	16	AIR TO GROUND	AIRGUARD	ALL DIVS	168.6250	000.0	168.6250	110.9	A	EMERGENCY AIRCRAFT CONTACT
5. Special Instructions: 24 hour staffing: PIONEER COMMUNICATIONS PHONE NUMBER: (888) 891-7800 / CURRENT CLONE "PIE 6-21"										
6. Prepared By COML		Name: Jarrod Nordloh				Signature: /s/ Jarrod Nordloh				
ICS 205		IAP Page				Date/Time: 6/20/2024 21:54				

CORRECTED



OKANOGAN-WENATCHEE NATIONAL FOREST

Resource Guidelines for Fire Suppression

Fire: Pioneer

Location: Pioneer Creek, North shore of Lake Chelan

Date: 6/18/2024

Resource Advisors

Lead READ: Brigitte Ranne 509-663-6118, brigitte.ranne@usda.gov

REAF: Hector Rodriguez 509-393-5379, Hector.Rodriguez3@usda.gov

REAF: Eireann Pederson 360-854-8197, eireann.pederson@usda.gov

HUMAN SAFETY IS THE HIGHEST PRIORITY FOR EVERY EMERGENCY RESPONSE ACTION

CORRECTED

MIST for Spike Camp and Lumber Forward Operating Base Management

- Employ minimum impact suppression tactics (MIST) where feasible, especially in remote or sensitive areas.
- If spike camps are necessary, use existing, or previously impacted campsites where available. If existing campsites are not available; use your local resource advisor to help identify the most resilient sites in rocky or sandy soils. Avoid camping in wet meadows, along streams, or on lake shores.
- Store food properly so that it is not accessible to wildlife. Consider hanging food in trees at least 15 feet off the ground and 5 feet from the trunk of the tree, or store food in sealable containers. Store food away from the campsite (300 feet is ideal) to reduce the risk of human and bear (and rodent!) conflicts.
- Do not let garbage and food scraps accumulate in camp. All garbage and food scraps need to be removed from the camp ASAP and before leaving the site.
- Minimize disturbance to land in preparing bedding and campfire sites. Do not clear vegetation, trench, or excavate a flat spot to create bedding sites.
- Do not use nails in trees. Don't construct camp furniture.
- If a campfire is built for warmth in the evening, build either a pit or mound fire. Use dead and down firewood. Use small diameter wood that burns down more cleanly. Don't burn plastics or aluminum - pack it out with the rest of the camp garbage.



- In small spike camp situations (not Lucerne), individuals should use the "cat-hole" method of disposing of human waste. Toilet seats should be located a minimum of 200 feet from water sources. Holes should be dug 6-8 inches deep.

In large or long term spike the camps use helicopters, boats, or pack stock to deliver portable backcountry latrines and remove human waste if necessary. If the camp does not have adequate pack, boat, or air support for human waste management, establish community latrines well away from water sources and common areas. Use human waste bags, if necessary.

Dipping and Drafting

- No cross-dipping between water bodies. All buckets or snorkels should be cleaned, inspected, and dried in the sun if they must be used between lakes. Dipping in small lakes must be pre-approved by the READ or AA.
- When drafting, use already disturbed areas for stream access (road crossings, dispersed campsites) to reduce the need for riparian vegetation clearing.
- Use screens (3/32" inch) for all pumping operations.
- Use containment pads and basins under pumps and fuel cans. Ensure a spill kit is present with every operating pump.

Invasive Species

- The fire is burning within an infestation of common crupina, a WA State Class A Noxious Weed. Prevent spread of crupina off site – plan to wash hose and other equipment. Request fire fighters brush boots before boarding boat or **before entering National Park Service Land.**
- Inspect slings and remove all plant/soil material prior to use.
- Ensure all camps, staging areas, helispots and cargo areas are free of invasive plants to prevent spread to un-infested areas.
- Weed wash all vehicles when they arrive to the incident and when demobed.

Fisheries /Aquatic Recommendations

- If trees must be felled in riparian areas for suppression or safety reasons, fell them toward streams where possible and minimize bucking where possible.
- Non-mechanized suppression activities are recommended within Riparian Reserves (150-300 ft from stream channel). For example, consider hand lines instead of dozer lines when feasible.

Retardant Use

- Retardant avoidance areas are present in the fire suppression area for both aquatic and terrestrial species.
- Track all retardant drops – locations and amounts.
- Report all mis-applications ASAP to READ. Monitoring and reporting of misapplications is required.

Wet Meadows

- No line or other disturbance in wet meadows in the Summer Blossom area (east of South Navarre campground above and below the 8200 road) and at Coyote and Poison Springs at the headwaters of their respective creeks.

Dry Meadows

- Minimize disturbance from staging and parking areas in dry meadows. These areas recovery slowly and are vulnerable to invasive plant infestation.

White Bark Pine

- Avoid cutting white bark pine whenever possible. Needles of 5 keep it alive! Ask READ for help with ID.

Burnout operations

- Plan to protect whitebark pine of all ages and mature cold and moist forest during burnouts. READ consultation and line officer approval is required for burn plans that include these forest types.
- During burnouts modify firing to retain large trees, large snags and large down wood in forests whenever possible.
- Minimize total acres burned in burnouts.
- Incorporate typical resource protection measures used in RX burning whenever it is safe and practical to do so (such as retention of green islands in moist areas).
- Provide a map of areas that were burned as part of the burnout operation (for use in emergency consultation).

Cultural Resources

- If cultural resources are discovered during suppression activities, leave on site and notify READ.



HUMAN RESOURCE MESSAGE PIONEER FIRE JUNE 21, 2024

Summer Solstice

A solstice is the time when the Sun reaches its most northerly or southerly excursion relative to the celestial equator on the celestial sphere.

Usually, it's a decent rule of thumb that seasons start on the 21st of the appropriate month, but that's not always the case. This year's precise moment of solstice is particularly early. The simplest reason why is that 2024 is a leap year. During leap years such as 2024, the solstices and equinoxes occur about 18 hours and 11 minutes earlier than the previous year. During non-leap years, the timing of the solstice moves later, so things generally balance out over time.

June's full moon is commonly known as the strawberry moon, a name that comes from the Algonquin Native American tribe in the northeastern U.S. and eastern Canada and refers to the region's strawberry harvesting season (not the moon's actual hue). This June, it happens to be at its closest distance to Earth in its orbit, making it a supermoon by most standards.

Take a minute to look up in the sky tonight and enjoy the beauty.

Margaret Dietrich, Human Resource Specialist/Training Specialist
360-701-3154

Thought for the day: "Teamwork is the ability to work together toward a common vision. The ability to direct individual accomplishments toward organizational objectives. It is the fuel that allows common people to attain uncommon results." — Andrew Carnegie

LOGISTICS HOURS

Shower: 0500 - 1200 & 1400 - 2200

Supply: 0600 - 2200

Ground Support: 0500 - 2200

Fuel Tender: 0700 - 2100

Kitchen:

Breakfast: 0530 - 0900

Dinner: 1800 - 2100

PIONEER CONTACT LIST

Public Information: 509-210-2926

Communications: 208-891-7870

Check In/Demob: 509-661-5372

Medical: 360-775-5413

Supply: 360-877-5382

Ground Support: 425-274-6215

Finance: Equipment 208-891-6877 & TIME 208-891-8036

CORRECTED



CORRECTED

ICP
 Pioneer
 WA-SES-000173
 1099 N. Bradley St.
 Chelan, WA 98816

0 50 100 200
 Feet

▲ N

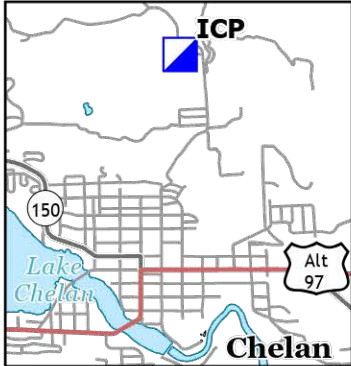


IAP

Pioneer
WA-SES-000173
06/21/2024 16hr

4157 acres on 6/20/2024 @ 0045

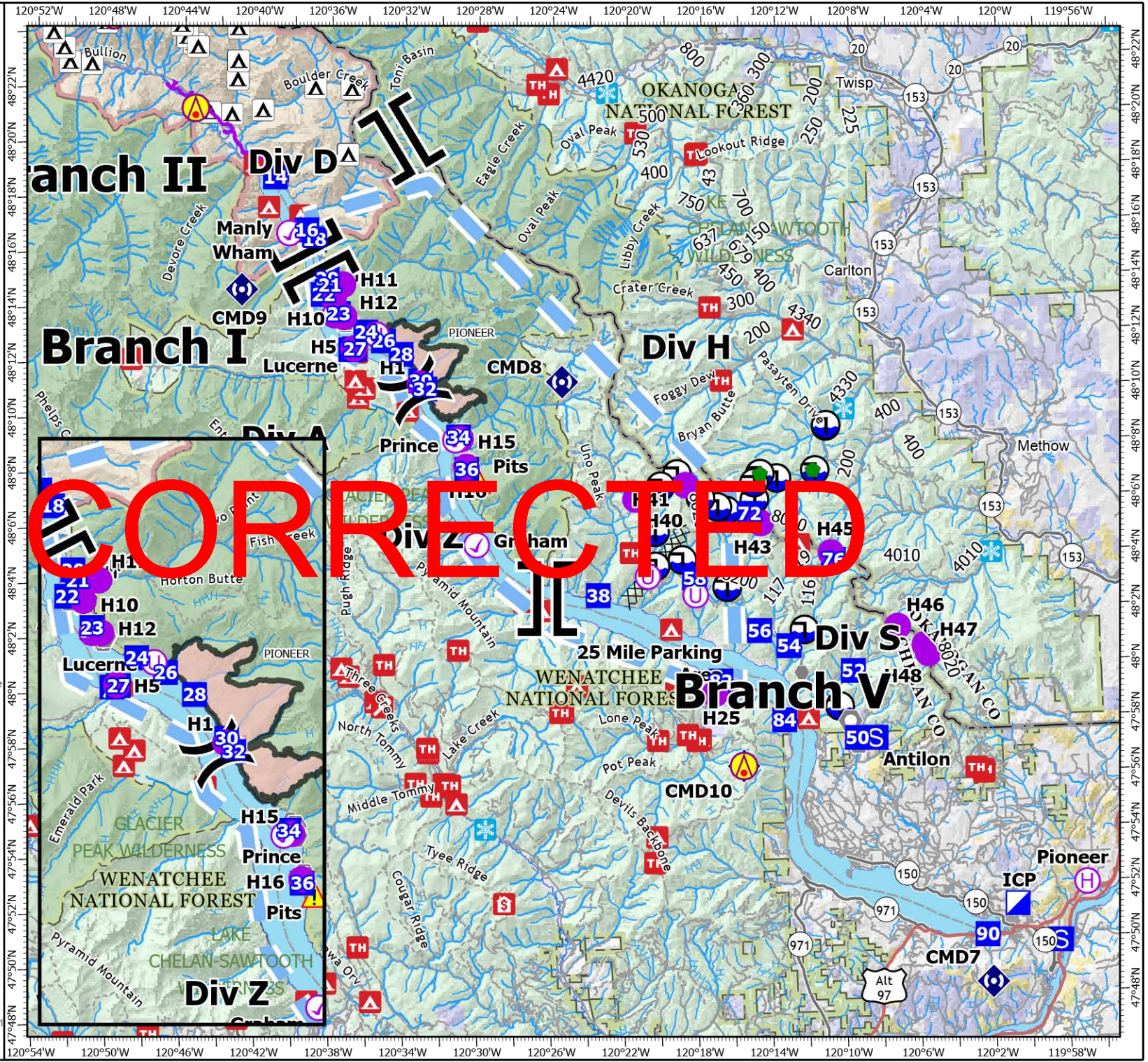
ICP: Chelan Rodeo Grounds
1099 N Bradley St.
Chelan, WA 98816



- Aerial Hazard
- Aviation Check Point
- Helispot
- Helibase
- Sling Site
- Unimproved Landing Area
- Division Break
- Branch Break
- Incident Command Post
- Drop Point
- Camp
- Staging Area
- Value at Risk
- Other
- Landmark
- Repair Point
- Repeater
- Hazard
- Draft Site
- Completed Dozer Line
- Completed Fuel Break
- Completed Mixed Construction Line
- Completed Road as Line
- Aerial Hazard
- Temporary Flight Restriction
- Wildfire Daily Fire Perimeter



1:355,106 | CIMT NW13 | 06/20/2024 210
Acres from IR
North American 1983 Datum. Lat/Long Grid



NW IMT13
Line Supply Order

Revised 04/03/2019

Date & Time Order was Placed	Order # (BR+DIVS + #)	Location & Time for Delivery (Division/LZ/DP/Lat Long)	Mode of delivery (Driven/Helo/DIVS to Pick up)

Person placing order (name & time):

Order received in Communications by (name & time):

Order received in Transportation by (name & time):

Order received in Helibase by (name & time):

Order shipped to line unit by (name & time): (Send this sheet to the line with the order)

#	Item	Amount		Item	Amount
1.	Meals, Breakfasts	ea	31.	Slingable Blivet, specify size – 72 or 55 gl	ea
2.	Meals, Lunches	ea	32.	Folding Tank, specify size	ea
3.	Meals, Dinners	ea	33.	Lightweight Pump Kit	ea
4.	Meals, MRE's	cs	34.	Hose, 1 1/2"	ea
5.	Water, 5 gal. cubie	ea	35.	Hose, 1"	ea
6.	Batteries, AA	Flat	36.	Hose, 3/4"	ea
7.	Batteries, Specify Type	pk	37.	Reducer, 1 1/2" x 1"	ea
8.	Tagging, Specify type	roll	38.	Reducer, 1" x 3/4"	ea
9.	Gas, Low	gal	39.	Gated "Y", 1 1/2"	ea
10.	Bar Oil	gal	40.	Gated "Y", 1"	ea
11.	2-cycle oil, chainsaw (2.5 oz)	6 pk	41.	Gated "Y", 3/4"	ea
12.	Sleeping Bags	ea	42.	Shut-off Valve, specify size	ea
13.	Gatorade	cs	43.	In-line Tee, 1 1/2" x 1"	ea
14.	Tarps / Plastic	roll	44.	Nozzle, 1 1/2"	ea
15.	Parachute Cord	roll	45.	Nozzle, 1"	ea
16.	Tool, Shovel	ea	46.	Nozzle, 3/4"	ea
17.	Tool, Pulaski	ea	47.	20-25 Person First Aid Kit	ea
18.	Tool, Combi	ea	48.	Chainsaw Kit	ea
19.	Tool, McLeod	ea	49.	Toilet Paper (96 per case)	cs
20.	Tool, Specify Type	ea	50.	1000 ft. Hose Lay Kit	ea
21.	Fusee	cs	51.	Garbage Bags	bx
22.	Drip Torch	ea	52.	Leadline	ea
23.	Drip Torch Mix, 5 gal.	ea	53.	Spike Supply Kit	ea
24.	Coffee Kit w/propane	ea	54.	Dolmar (6 per case)	ea
25.	Swivel	ea	55.	Sprinkler Kit	ea
26.	Backpack Pump	ea	56.	LINE Spike Supply Kit	ea
27.	Pumpkin, specify size	ea	57.	Duct Tape	roll
28.	Mark 3 Pump	ea	58.	House Wrap	roll
29.	Mark 3 Pump Accessory Kit	ea	59.	Staple Gun w/staples	ea
30.	2-cycle oil, high pressure pump	qt			

CORRECTED

Team Ordering/Timeline Process:

1100 - Last call to change spike camp resource hot food location.
 1600 - DIVS to have next day's resource order ready for Planning OPS.

- All orders will be placed through DIVS or Branch.
- DIVS or Branch will place all orders through Communications Unit.
- All orders will be tracked using the process found on the front of this form.

1000 ft. Hose Lay Kit (Order as "#50")				Spike Supply Kit (Order as "#53")			
Quantity	NFES#	Item	Weight	Quantity	NFES#	Item	Weight
10 ea	1239	Hose 1½"	125 lbs	2 rolls	0071	Duct Tape	4 lbs
10 ea	1238	Hose 1"	84 lbs	4 rolls	0222	Fiber Tape	2lbs
20 ea	1016	Hose ¾"	25 lbs	1 case	0021	Trash Bags	21 lbs
5 ea	0231	1½" Gated "Y"	20 lbs	1 case	0465	Cups for hot liquid	18 lbs
5 ea	0259	1" Gated "Y"	13 lbs	2 ea	0070	16x24 Tent fly	40 lbs
10 ea	0904	¾" Gated "Y"	3 lbs	1 ea	0027	Water Wash Basins	2 lbs
5 ea	0010	Reducers 1½" - 1"	2 lbs	1 case		Liquid Hand Soap / pump	10 lbs
5 ea	0033	Reducers 1" - ¾"	2 lbs	8 cases	1842	MRE's	18 x 20= 360 lbs
10 ea	0738 or 0655	Ball Valve ¾"	5 lbs	48 ea	0022	Sleeping bags (dol. bag)	48 x 5= 240 lbs
10 ea	0138	Nozzle, 1"	5 lbs	3 cases	0030	AA Batteries, 24 pkg./case	90 lbs
10 ea	0136	Nozzle ¾"	5 lbs	1 case	0240	Paper Towels	41 lbs
5 ea	0230	Tee 1½x1½x1"/valve	5 lbs	1 case	0142	Toilet Paper	44 lbs
LINE Spike Supply Kit (Order as "#56")				1 roll	0144	Plastic sheeting	45 lbs
				1 roll	0533	P-Cord	9 lbs
Quantity	NFES#	Item	Weight	20 ea	7443	Cubies, 5 gal. Full Potable Water	20 x 40= 800 lbs
20+0H	0022	Sleeping bags	20 x 5= 100 lbs	1 box	1059	12" Bastard Files	9lbs
20 ea	7443	Cubies, 5 gal Full	20x40= 800 lbs	1 ea	3444	2-cycle mix, chainsaw (6 pk 2.5 oz)	2lbs
18 cases	1842	MRE's	18x20=360 lbs	8 gal	1880	Bar Oil	64 lbs
1 sl	0533	P-Cord	9 lbs	15 gal		Regular Gas	120 lbs
3 cases	0030	AA Batteries, 24 pkg./case	90 lbs	1 can		3 lbs. can coffee	3 lbs
1 case	0021	Trash bags	21 lbs	1 ea		2 1/2 gal coffee pot or 3-1 gal	10 lbs
10 rolls	0142	Toilet paper	3 lbs	2ea	0089	Ridge pole	46 lbs
1 roll	0144	Plastic sheeting	45 lbs	12 ea	0083	Pole upright	89 lbs
2 rolls	0222	Fiber Tape	2 lbs	24 ea	0825	Stake Tent	24 lbs
1 ea	3444	2-cycle mix, chain-saw (6 pk 2.5 oz)	2 lbs				
4 gal	1880	Bar Oil	32 lbs				
15 gal		Regular Gas	120 lbs				
1 box	1059	12" Bastard Files	9 lbs				

DIVISION PLANNING WORKSHEET

NEXT OPERATIONAL DATE

DIVISION/GROUP

NAME OF DIVISION/GROUP

ROLL OVER ASSIGNED RESOURCES

EXCESS RESOURCES

CORRECTION TO 204

E or C NUMBER	RESOURCE DESIGNATOR	LEADER	NO. PERSONS	COMMENTS

OPERATIONAL PROJECTION (Task, Purpose, End State) 24 hrs

OPERATIONAL PROJECTION (Task, Purpose, End State) 48 hrs

CORRECTED

OPERATIONAL PROJECTION (Task, Purpose, End State) 72 hrs

REQUEST FOR ADDITIONAL RESOURCES

NUMBER	TYPE	RESOURCE KIND	DATE NEEDED

Critical Needs: If your resource request is critical, describe the mission and the duration resources are needed.

* *[Faint mirrored text from reverse side of page]*

MEDICAL PLAN (206 WF)

1. Incident/Project Name				2. Operational Period					
Pioneer Fire				Date/Time: 06/21/24 0600-2200					
3. Ambulance Services									
Name	Complete Address	Phone	Advanced Life Support (ALS)						
Lake Chelan EMS	Chelan, WA	911	Yes	X		No			
4. Air Ambulance Services									
Name	Phone/Channel	Frequency, Type of Aircraft & Capability							
Life Flight- Brewster	1-800-232-0911 911	VMED 29, Rotor, ALS, 24 hr							
Airlift NW- Wenatchee	1-800-426-2430 911	VMED 29, Rotor, ALS, 24 hr							
Wenatchee Short Haul- Chelan Airport	Command 7,8,9,10 (Linked)	VMED 29, Rotor, BLS, Daytime, Short Haul							
Snohawk 10- Snohomish	1-800-258-5990 911	VMED 29, Rotor, ALS, Daytime, Hoist							
Spokane County Hoist- Spokane	1-509-532-8930 911	VMED 29, Rotor, ALS, 24 hr, Hoist Daytime Only							
5. Hospitals									
Name	Degrees Decimal Minutes		Travel Time		Phone	Helipad		Level of Care	
			From Fire	Boat		Yes	No		
Lake Chelan Health 110 S. Apple Blossom Drive Chelan WA	Lat: 47° 50' 20 N Long: 119° 59' 20 W	30 Min	3 Hr	509-683-2474		X	Level IV Trauma		
Central Washington Hospital 1201 S. Miller Wenatchee WA	Lat: 47° 24. 43 N Long: 120° 19. 28 W	1 Hr	4 Hr	509-433-3115	X		Level II Trauma		
Harborview Medical Center 325 9th Ave Seattle WA	Lat: 47° 36. 24 N Long: 122° 19. 45 W	1.5 Hr	6 Hr	206-744-4025	X		Level I Trauma Burn Center		
CORRECTED	CORRECTED	ICP		EMS Responders & Capability:		James Brown MEDL/Paramedic		360-775-5413	
		Equipment Available on Scene:		ALS Kit, AED, O2, OTC meds					
		Medical Emergency Channel:		Command 7,8,9,10 (Linked)					
		ETA for Ambulance to Scene:							
		Air:		NA					
		Ground:		15 Min					
		Approved Heli-Spot:		NA					
		Lat:		NA					
		Long:		NA					
		CORRECTED	CORRECTED	LUCERNE FOB		EMS Responders & Capability:		Bel Meacham MEDL EMTF	
Equipment Available on Scene:				ALS Kit, AED, O2, OTC meds					
Medical Emergency Channel:				Command 7,8,9,10 (Linked)					
ETA for Ambulance to Scene:									
Air:				2 hr					
Water/Ground:				3 hr					
Approved Heli-Spot:									
Lat:				H-5 48° 12.1624' N					
Long:				120° 35.4476' W					
CORRECTED	CORRECTED			BRANCH I		EMS Responders & Capability:		MEDIC 4 Nathan Etherington (DP-36)	
		Equipment Available on Scene:		ALS Kit, Monitor/Defib, O2					
		Medical Emergency Channel:		Command 7,8,9,10 (Linked)					
		ETA for Ambulance to Scene:							
		Air:		2 hr					
		Water/Ground:		3 hr					
		Approved Heli-Spots:							
		H-1 48° 10.813' N		H-11 48° 14.492' N		H-15 48° 08.754' N			
		120° 31.925 W		120° 35.922' W		120° 29.813 W			
		H-10 48° 14.099' N		H-12 48° 13.381' N		H-16 48° 07.744' N			
120° 36.782' W		120° 35.919' W		120° 29.541' W					
CORRECTED	CORRECTED	BRANCH II		EMS Responders & Capability:		TBD			
		Equipment Available on Scene:							
		Medical Emergency Channel:		Command 7,8,9,10 (Linked)					
		ETA for Ambulance to Scene:							
		Air:		2 hr					
		Ground:		3 hr					
		Approved Heli-Spot:		NA					
		Lat:		NA					
		Long:		NA					

MEDICAL PLAN (206 WF)

BRANCH V	EMS Responders & Capability:	MEDIC 2 Joel Bower (CONTINGENCY) 360-461-7390 MEDIC 5 Brian Linacre (CONTINGENCY) 301-781-7990 REMS 1 Caitlin Lucia +3 (DIV S) 443-699-2512
	Equipment Available on Scene:	ALS Kit, Monitor/Defib, O2, Rescue Gear
	Medical Emergency Channel:	Command 7,8,9,10 (Linked)
	ETA for Ambulance to Scene:	
	Air:	2 hr
	Ground:	3 hr
	Approved Heli-Spot:	NA
	Lat:	H-25 47° 59.200 N
Long:	120° 16. 521 W	
TBD	EMS Responders & Capability:	TBD
	Equipment Available on Scene:	
	Medical Emergency Channel:	Command 7,8,9,10 (Linked)
	ETA for Ambulance to Scene:	
	Air:	2 hr
	Ground:	3 hr
	Approved Heli-Spot:	NA
	Lat:	NA
Long:	NA	
TBD	EMS Responders & Capability:	TBD
	Equipment Available on Scene:	
	Medical Emergency Channel:	Command 7,8,9,10 (Linked)
	ETA for Ambulance to Scene:	
	Air:	2 hr
	Ground:	3 hr
	Approved Heli-Spot:	NA
	Lat:	NA
Long:	NA	
TBD	EMS Responders & Capability:	TBD
	Equipment Available on Scene:	
	Medical Emergency Channel:	Command 7,8,9,10 (Linked)
	ETA for Ambulance to Scene:	
	Air:	
	Ground:	
	Approved Heli-Spot:	NA
	Lat:	NA
Long:	NA	
TBD	EMS Responders & Capability:	TBD
	Equipment Available on Scene:	
	Medical Emergency Channel:	Command 7,8,9,10 (Linked)
	ETA for Ambulance to Scene:	
	Air:	
	Ground:	
	Approved Heli-Spot:	NA
	Lat:	NA
Long:	NA	

CORRECTED

Prepared By (Medical Unit Leader)	Date	Reviewed By (Safety Officer)	Date
James Brown MEDL	06/20/24	Ray Hershey SOF2	06/20/24
Signature: <i>James Brown</i>		Signature: <i>Ray Hershey</i>	

MEDICAL PLAN (ICS 206 WF)

Controlled Unclassified Information//Basic

Medical Incident Report

FOR A NON-EMERGENCY INCIDENT, WORK THROUGH CHAIN OF COMMAND TO REPORT AND TRANSPORT INJURED PERSONNEL AS NECESSARY.

FOR A MEDICAL EMERGENCY: IDENTIFY ON-SCENE INCIDENT COMMANDER BY NAME AND POSITION AND ANNOUNCE "MEDICAL EMERGENCY" TO INITIATE RESPONSE FROM IMT COMMUNICATIONS/DISPATCH.

Use the following items to communicate situation to communications/dispatch.

1. CONTACT COMMUNICATIONS / DISPATCH (**Verify correct frequency prior to starting report**)
Ex: "Communications, Div. Alpha. Stand-by for Emergency Traffic."
2. INCIDENT STATUS: Provide incident summary (including number of patients) and command structure.
Ex: "Communications, I have a Red priority patient, unconscious, struck by a falling tree. Requesting air ambulance to Forest Road 1 at (Lat./Long.) This will be the Trout Meadow Medical, IC is TFLD Jones. EMT Smith is providing medical care."

Severity of Emergency / Transport Priority	<input type="checkbox"/> RED / PRIORITY 1 Life or limb threatening injury or illness. Evacuation need is IMMEDIATE Ex: Unconscious, difficulty breathing, bleeding severely, 2° – 3° burns more than 4 palm sizes, heat stroke, disoriented. <input type="checkbox"/> YELLOW / PRIORITY 2 Serious Injury or illness. Evacuation may be DELAYED if necessary. Ex: Significant trauma, unable to walk, 2° – 3° burns not more than 1-3 palm sizes. <input type="checkbox"/> GREEN / PRIORITY 3 Minor Injury or illness. Non-Emergency transport Ex: Sprains, strains, minor heat-related illness.	
Nature of Injury or Illness & Mechanism of Injury		Brief Summary of Injury or Illness (Ex: Unconscious, Struck by Falling Tree)
Evacuation Request		Air Ambulance / Short Haul/Hoist Ground Ambulance / Other
Patient Location		Descriptive Location & Lat. / Long. (WGS84)
Incident Name		Geographic Name + Medical (Ex: Trout Meadow Medical)
On-Scene Incident Commander		Name of on-scene IC of Incident within an Incident (Ex: TFLD Jones)
Patient Care		Name of Care Provider (Ex: EMT Smith)

CORRECTED

3. INITIAL PATIENT ASSESSMENT: Complete this section for each patient as applicable (start with the most severe patient)
Patient Assessment: See IRPC, ICS 106

Treatment:

4. EVACUATION PLAN:
Evacuation Location (if different): (Descriptive Location (drop point, intersection, etc.) or Lat. / Long.) Patient's ETA to Evacuation Location:

Helispot / Extraction Site Size and Hazards:

5. ADDITIONAL RESOURCES / EQUIPMENT NEEDS:
Example: Paramedic/EMT, crews, immobilization devices, AED, oxygen, trauma bag, IV/fluid(s), splints, rope rescue, wheeled litter, HAZMAT, extrication

6. COMMUNICATIONS: Identify State Air/Ground EMS Frequencies and Hospital Contacts as applicable

Function	Channel Name/Number	Receive (RX)	Tone/NAC *	Transmit (TX)	Tone/NAC *
COMMAND					
AIR-TO-GRND					
TACTICAL					

7. CONTINGENCY: **Considerations:** If primary options fail, what actions can be implemented in conjunction with primary evacuation method? Be thinking ahead..

8. ADDITIONAL INFORMATION: Updates/Changes, etc.

REMEMBER: Confirm ETAs of resources ordered. Act according to your level of training. Be Alert. Keep Calm. Think Clearly. Act Decisively.