

# Pioneer Incident Action Plan

**Sunday June 23, 2024**

Morning Radio Briefing: 0700  
Operational Period: 0600-2200

WA-SES-000173

USFS PNRZ79 (1522) - DOI RZ79 - DNR 221-LDW

MAPS  
IAP  
CHECK-IN  
DEMOB  
AIR TRAVEL REQUEST



## Health & Safety Message

### Complacency

- Daily assignments are becoming routine. Don't become complacent.
- Take care of personal health needs. Get adequate rest, a healthy diet, and hydrate.
- Clearly understand your assignment and be accountable for meeting objectives.
- Review the 10 standard firefighting orders and 18 "watch out" situations.
- Communicate identified hazards to others. See something, say something.
- Enjoy your work but avoid horseplay.
- Display an appropriate sense of humor.

**Don't leave your Situational Awareness behind, even for a minute, in life or on a fire. Your life may depend on it.**

## Notes

Please Send Photos To  
2024.pioneer@firenet.gov

	Ground	Air
FS:		
DNR:		
OSC:		
FS AA:		
DNR AA:		

## FINANCE MESSAGE

**Finance Email:** [2024.pioneer.finance@firenet.gov](mailto:2024.pioneer.finance@firenet.gov)

**Finance Phones:** *Equipment (208) 891-6877 & TIME (208) 891-8036*

**This incident requires electronic documentation.** Please email your time to the address above. Scanned PDF's please, no .JPG's. Feel free to call finance for help if needed. Scanners are also available at ICP.

### Required Documents

Overhead, Agency Crews & Cooperators	Contract Resources
<b>Finance docs needed:</b> Resource Order, Manifest, Cooperative Agreement, Casual Hire Form w/ECI# (as applicable)	<b>Finance docs needed:</b> Resource Order, Manifest, Full Contract/Agreement, Certifications ( <i>if required</i> ) Pre-Inspection
<b>Daily:</b> CTRs, Shift Tickets	<b>Daily:</b> CTRs, Shift Tickets, receipts (claims, etc.) <b>NOTE: Document travel times and odometer readings</b>
<b>Demob:</b> Signed OF-288; Signed OF-286	<b>Demob:</b> Contractor Evaluations, Shift Tickets, receipt(s) for Addition/Deductions, Post-Inspection, Signed OF-286
<p><b>"H-Pay"- Entitlement to Hazardous Pay Differential (5 CFR 550.904) – Hazard pay MUST be supported by a justification. If justification is not provided, you chance losing your entitlement.</b></p>	<p><b>Please call finance regarding issues with your time:</b>                      E-47 Xtreme Wildland                      E-104 Havillah Logging                      E-74 MVP Team                      E-105 Justin Pitts                      E-75 David Rains</p>

Incident Name: **Pioneer**  
 Incident Number: **WA-SES-000173**  
 Financial codes:  
 WA DNR – **221-LDW**  
 DOI – **RZ79**  
 USDA – **PNRZ79 (1522)**

**Please make sure you check in using QR code on the front of the IAP and then email your time daily.**  
**THANK YOU!!**

CHECK-IN	DEMOB
<p>Please complete the virtual check-in process via the QR code on the front cover.</p> <p>You are not checked in until you provide the following:</p> <ul style="list-style-type: none"> <li>• Red Cards</li> <li>• Roster/Manifest</li> </ul> <p><b>Please email documents to:</b>  <a href="mailto:2024.pioneer.demob@firenet.gov">2024.pioneer.demob@firenet.gov</a></p>	<p><b>Fliers complete the "Air Travel Request" via the QR code on the front cover 72 hours prior to flight date.</b></p> <ul style="list-style-type: none"> <li>• Return supplies to the Cache</li> <li>• Return radios, antennas, etc., to Communications</li> <li>• Contact Finance about closing out your paperwork</li> </ul> <p><b>Once the above items have been completed, SCAN the QR code on the front cover and complete the demob questions.</b></p>

If you have any questions about Check-In or DEMOB please email demob at [2024.pioneer.demob@firenet.gov](mailto:2024.pioneer.demob@firenet.gov) or call 509-661-5372. Please include your request number in the subject line when emailing.

<b>INCIDENT OBJECTIVES</b>	<b>1. Incident Name</b> Pioneer	<b>2. Date</b> June 22, 2024	<b>3. Time</b> 2000
<b>4. Operational Period: 06/23 0600-2200</b>			
<b>5. General Objectives:</b> Implement suppression strategies and objectives for short/long-term planning. <ul style="list-style-type: none"> <li>• Provide for firefighter and public safety through hazard identification and application of a shared risk management process.</li> <li>• Coordinate public information to provide timely updates to agency partners, cooperators, and the public.</li> <li>• Coordinate suppression activities with READs to identify current and future impacts on the landscape.</li> <li>• Effectively manage and track costs with daily IAP reporting.</li> <li>• Coordinate with agency leadership/administrators to ensure effective and efficient management of firefighting resources.</li> <li>• Identify best course of action for firefighter support, both logistically and operationally.</li> </ul> Operational objectives: <ul style="list-style-type: none"> <li>• Implement a point protection strategy to protect private and federal infrastructure.</li> <li>• Triage additional infrastructure within fire planning area to minimize the potential impact to these sites.</li> <li>• Communicate with local law enforcement officials to ensure current and potential evacuations is coordinated.</li> <li>• Evaluate current fire conditions, identify/utilize features that could lead to fire growth, and validate strategic indirect (new/historical) control lines.</li> <li>• Utilize appropriate tactics for current/future fire environment and the predominantly wilderness landscape .</li> <li>• Develop a long-term strategic plan for suppression of the incident.</li> </ul>			
<b>5a. Incident Requirements</b> <ul style="list-style-type: none"> <li>• Provide Agency Administrator updates and briefings on incident status.</li> <li>• Firefighting operations will implement tactics that offer the highest probability of success to minimize impacts to the landscape and minimize unnecessary exposure to firefighters.</li> <li>• Incident values are firefighter and public safety, critical infrastructure, private land and natural resources.</li> </ul> <b>5b. Leaders Intent</b> <ul style="list-style-type: none"> <li>• <b>Safety:</b> Firefighter, public, boat and aviation safety will be addressed through DRA process.</li> <li>• <b>ISAP:</b> Engage agencies with strategic alignment process, for shared values at risk.</li> <li>• <b>Communication:</b> Keep Agency Administrators and firefighters informed of strategic actions, accomplishments, and challenges.</li> <li>• <b>Operations:</b> Make informed strategic/tactical decisions suppressing the fire in the right geographic locations with the appropriate resources and highest probability of success.</li> <li>• <b>Stakeholders:</b> Collaborate with local partners, officials, and landowners to provide situational updates pertinent to the fire.</li> <li>• <b>Logistics:</b> Provide support ensuring food, water, and shelter for incident responders.</li> <li>• <b>Human Resources:</b> Ensure that all incident personnel are treated with dignity and respect, while having zero tolerance for harassment, alcohol, or illegal drug use.</li> <li>• <b>Public Information:</b> Provide timely and accurate information through media outlets, briefings, and social platforms as needed.</li> <li>• <b>Finance:</b> Monitor and communicate incident cost associated with meeting incident objectives.</li> <li>• <b>Planning:</b> Provide incident documentation, resource tracking, and meeting management.</li> </ul>			
<b>6. Weather Forecast &amp; General Safety Message for Period – See Attached</b>			
<b>7. Attachments (mark if attached)</b>			
<input checked="" type="checkbox"/> Organization List - ICS 203	<input checked="" type="checkbox"/> Weather Forecast	<input checked="" type="checkbox"/> Safety Message	
<input checked="" type="checkbox"/> Div. Assignment Lists - ICS204	<input checked="" type="checkbox"/> Fire Behavior Forecast	<input type="checkbox"/> Medical Emergency Com Plan	
<input checked="" type="checkbox"/> Communications Plan - ICS 205	<input checked="" type="checkbox"/> Incident Map	<input type="checkbox"/>	
<input checked="" type="checkbox"/> Medical Plan - ICS 206	<input checked="" type="checkbox"/> Air Operations - ICS 220	<input type="checkbox"/>	
<b>9. Prepared by</b> Aileen Nichols	<b>9. Approved by (Incident Commander)</b> Brian Gales 		

ORGANIZATION ASSIGNMENT LIST	
1. Incident Name <b>Pioneer</b>	
2. Date <b>June 22, 2024</b>	3. Time <b>1830</b>
4. Operational Period <b>June 23, 2024 0600-2200</b>	
Position	Name
<b>CIMTNW13 LWD 6/24/2024</b>	
5. Incident Commander and Staff	
Incident Commander	<b>Brian Gales (O-8.1)</b>
Deputy Incident Commander	<b>Eric Riener (O-8.2)</b>
Liaison Officer	<b>Bill Neckels (O-8.3)</b>
ISAP	<b>Robert Burnside (O-14)</b>
Information Officer	<b>Randall Rishe (O-29)</b>
Information Officer	<b>Eric Waters (O-8.5)</b>
Safety Officer	<b>Ray Hershey (O-8.4)</b>
Safety Officer - t	<b>Jeremiah Maghan (O-62)</b>
Human Resources	<b>Margaret Dietrich (O-109)</b>
6. Agency/Organization Representative(s):	
USFS Oak/Wen Agency Administrator	<b>Kari Grover-Wier</b>
USFS Oak/Wen Agency Administrator - t	<b>Paul Willard</b>
DNR Agency Administrator	<b>Larry Leach</b>
DNR Deputy Agency Administrator	<b>Wyatt Leighton</b>
NPS Agency Administrator	<b>Don Striker</b>
NPS Agency Representative	<b>Ash Rawhouser</b>
NPS FMO	<b>Matt Ellis</b>
USFS LEAD READ	<b>Brigitte Ranne</b>
NPS LEAD READ	<b>Cedar Drake</b>
REAF	<b>Hector Rodriguez</b>
REAF	<b>Eireann Pederson</b>
7. Planning Section	
Plans Chief	<b>Aileen Nichols (O-8.14)</b>
Resources Unit	<b>Meredith Butcher (O-8.15)</b>
Status Check-In/ Demob Unit	<b>Laura Backlund (O-8.20)</b>
Situation Unit	<b>Laurie Bergvall (O-8.18)</b>
Fire Behavior Analyst	<b>Dean Warner (O-8.19)</b>
Fire Behavior Analyst - Lucerne	<b>Steve Ziel (O-72)</b>
Incident Meteorologist	<b>Trent Smith (O-58)</b>
Documentation Unit - Virtual	<b>Deidre Smith (O-59)</b>
GIS Specialist	<b>Austin Lewandowski (O-60)</b>
GIS Specialist	<b>Josh Serfass (O-100)</b>
Computer Specialist	<b>Dave Johnson (O-8.17)</b>
Air Resource Advisor	<b>Seth Morphsis (O-108)</b>
Strategic Operational Planner	<b>Mark Johnson (O-74)</b>
8. Logistics Section	
Logistics Chief	<b>Bryan Swanberg (O-8.22)</b>
Deputy Logistics Chief - Lucerne	<b>Cindy Preston (O-8.21)</b>
Deputy Logistics Chief	<b>Dave Willis (O-8.23)</b>
Supply Unit Leader	<b>Jon Byerly (O-8.25)</b>
Ordering Manager	<b>Robert Yarnall (O-8.30)</b>
Communications Unit Ldr	<b>Jarrod Nordloh (O-132)</b>
Incident Comm Mgr	<b>Trina Contreras (O-8.31)</b>
Com Tech	<b>Brian Wolfenburger (O-8.32)</b>
Food Unit Leader	<b>Pat Young (O-8.26)</b>
Facilities Unit Leader	<b>Keith Yonaka (O-8.24)</b>
Medical Unit Leader - ICP	<b>James Brown (O-8.28)</b>

Medical Unit Leader - Lucerne	<b>Ben Meacham (O-118)</b>	
Ground Support Unit	<b>William Braddy (O-8.29)</b>	
Receiving/Distribution Mgr - t	<b>Karl Peterson (O-31)</b>	
Base Camp Manager	<b>Carl Schilter (O-12)</b>	
Security Manager	<b>Chris Dodds (O-11)</b>	
Equipment Manager	<b>Charlie Carmichael (O-23)</b>	
9. Operations Section		
Operations (Field)	<b>John Spencer (O-8.6)</b> <b>Whitney Machado - t (O-8.41)</b>	
Operations (Planning)	<b>Tom Hall (O-13)</b>	
Operations	<b>Brad Reed (O-8.9)</b>	
Division Supervisor	<b>H</b>	<b>Rob Poyner (O-135)</b>
Group Supervisor	<b>Boat</b>	<b>Charlie Cronk (O-24)</b>
a. Branch I		
Branch Director		<b>Matt James (O-15)</b>
Division Supervisor	<b>A</b>	<b>Erik Thorp (O-53)</b> <b>Chris Carr - t (O-54)</b>
Division Supervisor	<b>Z</b>	<b>Robert Boles (O-8.13)</b> <b>Pat Chism - t (O-26)</b>
b. Branch II		
Branch Director		<b>Thom Taylor (O-150)</b>
Division Supervisor	<b>D</b>	<b>Ben Lippert (O-103)</b> <b>Silas Baffa - t (O-107)</b>
c. Branch V		
Branch Director		<b>Spencer Gregory (O-16)</b>
Division Supervisor	<b>S</b>	<b>Anna Graves (O-8.10)</b> <b>Holt Jaeger (C-10.1)</b>
Group Supervisor	<b>Contingency</b>	<b>Andy Hall (O-106)</b> <b>Aaron Bruning - t (O-69)</b>
Staging Manager	<b>Staging</b>	<b>Jon Merager (O-131)</b>
d. Air Operations Branch		
Air Operations	<b>Nancy Barker (O-8.8)</b>	
Air Support Group	<b>David Moore (O-102)</b>	
Helibase Manager	<b>Jerry Rule (O-86)</b>	
10. Finance Section		
Finance Chief	<b>Veronika Klukas (O-8.33)</b>	
Deputy Finance Chief	<b>Paula James (O-8.34)</b>	
Cost Unit - Virtual	<b>Lori Price (O-8.35)</b>	
TIME Unit	<b>Heather Fitzpatrick (O-8.38)</b>	
Proc Unit Leader	<b>Eric Soto (O-8.37)</b>	
COMPS/CLAIMS	<b>Laurette Gaylord (O-45)</b>	
Personnel Time Recorder - t	<b>Jordan Allen-Flowers (O-47)</b>	
Incident Cont. Project Insp	<b>Stan Zazado (O-8.39)</b>	
In-Box Manager/PTRC	<b>Emily Cohn (O-46)</b>	
<b>PREPARED BY: Meredith Butcher</b>		



# Fire Weather Forecast



**FORECAST NO:** 11  
**PREDICTION FOR:** 24 Hr Shift  
**SHIFT DATE:** Sunday 6/23/2024

**INCIDENT:** Pioneer Fire

**SIGNED:** Trent Smith *Trent R. Smith*

**TIME AND DATE ISSUED:** 6/22/2024 1800 hrs

Incident Meteorologist (IMET)

**...RED FLAG WARNING NEAR THE FIRE FROM 1300 to 2000 TODAY...**

**Discussion:** A cold front moved through the region last night. Temperatures will be cooler, but humidity will only be slightly higher. Gusty northwesterly winds will occur on the fire with the strongest winds occurring between 1400 to 1900. A ridge will quickly build back over the region the next couple of days.

**WEATHER FORECAST FOR TODAY:**

**SKY/WEATHER:** Partly Cloudy.

**MAX TEMPERATURE:** 71 to 76.

**MIN RH:** 23 to 28 percent.

**20 FT WINDS:**

**Lower Valleys:** Northwest 5 to 10 mph gusts to 20 mph increasing to 10 to 15 mph gusts to 30 mph in the afternoon.

**Mid-slopes and Ridges:** Northwest 8 to 13 mph gusts to 25 mph increasing to 15 to 20 mph gusts to 40 mph in the afternoon.

**HAINES INDEX:** 3 Very Low: Stability-1 & Moisture-2 **TRANSPORT WINDS:** W 22 mph.

**INVERSION:** 2000 ft inversion starting to lift at 0900 with a max of 5000 ft by 1600.

**TONIGHT:**

**SKY/WEATHER:** Partly cloudy.

**MIN TEMPERATURE:** 47 to 52.

**MAX RH:** 56 to 61 percent.

**20 FT WINDS:**

**Valleys/Lower Slopes:** Northwest 10 to 15 mph with gusts to 25 mph decreasing to 5 to 10 mph after midnight.

**Mid-Slopes and Ridges:** Northwest 15 to 20 mph with gusts to 35 mph decreasing to 5 to 10 mph after midnight.

**INVERSION:** Developing after 2200 hrs near 500 ft.

**MONDAY:**

**SKY/WEATHER:** Partly Cloudy.

**MAX TEMPERATURE:** High 75 to 80.

**MIN RH:** 20 to 25 percent.

**20 FT WINDS:**

**Lower Valleys:** Northwest 5 to 10 mph. Gusts to 20 mph in the afternoon.

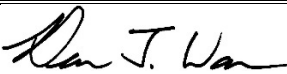
**Mid-slopes and Ridges:** Northwest 5 to 10 mph increasing to 7 to 12 mph gusts to 25 mph in the afternoon.

**HAINES INDEX:** 3 Very Low. **TRANSPORT WINDS:** NW 15 mph.

Yesterdays observations thru 1700	Min Temp	Max RH	Max Temp	Min RH	Peak Wind	Precipitation
<b>Stehekin RAWS (1230')</b>	58	61%	88	17%	18 mph	0.00
<b>Lake Chelan Airport (1260')</b>	64	42%	86	17%	8 mph	N/A
<b>Entiat RAWS (2825')</b>	66	33%	88	17%	22 mph	0.00
<b>Camp 4 RAWS (3156')</b>	63	36%	83	21%	12 mph	0.00

Weather observations can be texted to 406-360-6330 or emailed to trent.smith@noaa.gov

## Fire Behavior Forecast # 12

<b>Name of Incident:</b> Pioneer Fire WA-SES-000173	<b>Administrative Unit:</b> SE Region DNR / Okanagan-Wenatchee NF
<b>Date &amp; Time Issued:</b> 1900 – 6/22/2024	<b>Operational Period:</b> Day 6/23/2024
<b>FBAN:</b> Dean Warner	<b>Signed:</b> 

**Weather Summary** - See attached Pioneer Fire Weather Forecast. Windy today.

### Fire Behavior Summary

<b>General –</b> <u>Spotting potential:</u> <b>0.4 + mi.</b> <u>Probability of Ignition:</u> <b>60%</b> <u>Haines Index:</u> <b>3 (low)</b> LAL: 1 <u>ERC – Y:</u> <b>45 (81 percentile)</b>	<b>FUEL MODEL</b>	<b>Maximum ROS</b>	<b>Backing ROS</b>	<b>Maximum Flame length</b>	<b>Backing Flame length</b>
	GR2 - Moderate load grass shrub	<b>4 ch/hr</b>	<b>1 ch/hr</b>	<b>1 feet</b>	<b>1 feet</b>
	SH2 - Moderate load shrub	<b>5 ch/hr</b>	<b>2 ch/hr</b>	<b>2 feet</b>	<b>1 feet</b>
	TU5 – Very high load timber shrub	<b>19 ch/hr</b>	<b>9 ch/hr</b>	<b>9 feet</b>	<b>2 feet</b>
	TL8 – Long needle timber litter	<b>19 ch/hr</b>	<b>5 ch/hr</b>	<b>5 feet</b>	<b>1 feet</b>

#### **GENERAL**

Today's warm, dry, and windy conditions will support very active fire behavior. A dry cold front will pass through today. Forecasted NW winds today will aid fire progression in the Cascade and upper Meadow Creek drainages. Fire is still pinned between Meadow Creek on the north end; and Prince Creek on the south. To the east, fire continues to make progress up the ridge line of Skookum Puss Mountain. Fire is spreading through backing and flanking aided with rollout and ever-present Lake winds. One quarter mile spotting has been observed under similar conditions but models indicate potential for a greater distance.

**Topography:** This fire lies on the north side of Lake Chelan on a dry southwest aspect. The Lake's influence on local winds dominate the fire environment. Natural barriers (rock outcrops and scree slopes) are present in the fire area. When slope reversals occur, expect even more dramatic difference in rates of spread than you would normally see. Rolling debris will enhance backing rates of spread.

**Fuels:** The fire is burning in the Rex Creek burn scar (2001). The 23 year old fire scar has left a mosaic of fuels including a moderate load of heavy fuels that are dry enough to sustain fire spread and retain heat. Rock outcrops provide breaks in fuel continuity. Curing dry grass and timber litter with downed material are the primary fuels promoting fire spread. There are snags and heavy fuel concentrations throughout the area.

**ERC:** Due to the time of year, Energy Release Component values remain below the 90<sup>th</sup> percentile. The dry southwest aspect, Lake winds, and steep slopes offer ample opportunity for this fire to outperform typical fire indices.

#### **SPECIFIC**

**Div A:** If the fire crosses to the north side of Meadow Creek, expect a slope reversal that will produce rapid upslope spread with fingering runs in fine fuels. Round Lake saddle may provide localized channeled winds.

**Div Z:** Expect fire to continue flanking and backing south toward Prince Creek. Monitor for localized erratic winds at Lake Chelan. Winds will favor progression towards Prince Creek. Potential for spotting across Prince Creek is best in the lower reaches near or on the alluvial fan.

**Div. H, S, D:** Should not be impacted by fire activity today, monitor weather, smoke and radio closely.

#### **Air Ops/Smoke Dispersion**

Lake wind may be strong causing turbulence. Smoke from active fire may impact visibility for air operations.

#### **Safety**

Fire progression has not been as strong as expected in the last few days, even though conditions are ripe to support very active fire spread. Don't get lulled into thinking this fire has little to offer when potential is there. Keep that situational awareness dialed in and always maintain LCES.

<b>DIVISION ASSIGNMENT LIST</b>				1. Branch <b>I</b>	2. Division <b>A</b>	
3. Incident Name <b>Pioneer</b>				4. Operational Period Date: <b>06/23/2024</b> Time: <b>0600-2200</b>		
5. Operations Personnel						
Operations Chief		<b>John Spencer Whitney Machado - t</b>		Branch Director <b>Matt James</b>		
Safety Officer		<b>Ray Hershey</b>		Division Supervisor <b>Eric Thorp Chris Carr - t</b>		
6. Resources Assigned this Period						
Strike Team/Task Force/Resource Designator		Leader	# Persons	LWD	Drop Off PT./Time	Pick Up PT./Time
1	<b>O-49 TFLD</b>	<b>Jeremy Zemke</b>	<b>1</b>	<b>6/26</b>		
2	<b>O-52 TFLD - t</b>	<b>Dante Ybarra</b>	<b>1</b>	<b>6/26</b>		
3						
4	<b>C-8 CRW1 Union IHC</b>	<b>Eric Jorgenson</b>	<b>25</b>	<b>6/27</b>		
5	<b>C-9 CRW1 Zigzag IHC</b>	<b>Sandra Sperry</b>	<b>25</b>	<b>6/28</b>		
6	<b>C-4 CRW1 LaGrande IHC</b>	<b>Juan Elquezabal</b>	<b>21</b>	<b>6/23</b>		
7	<b>C-2 CR2I Wenatchee River C74</b>	<b>Ben Marquart</b>	<b>15</b>	<b>6/23</b>		
8						
9						
10	<b>O-67 MEDIC 3</b>	<b>Adam Lathrop</b>	<b>1</b>	<b>7/4</b>		
11	<b>O-137 EMT 3</b>	<b>James Franklin</b>	<b>1</b>	<b>7/1</b>		
12	<b>O-153 EMT 2</b>	<b>Aiden Noel</b>	<b>1</b>	<b>7/1</b>		
13						
14	<b>O-175 SOFR</b>	<b>Melissa Moore</b>	<b>1</b>	<b>7/4</b>		
15						
7. Control Operations:		<b>Meal count</b>	<b>92</b>			
<p><b>Task:</b> Contain fire spread to the northwest where terrain and fuels allow for highest probability of success. Assess fire perimeter progression to the north and east at higher elevations. Implement point protection efforts on federal &amp; private infrastructure.</p> <p><b>Purpose:</b> To slow fire progression, provide time for suppression tactics, and prep around critical values.</p> <p><b>End state:</b> Minimize fire impacts to critical values including private inholdings and Forest Service infrastructure.</p>						
8. Special Instructions:						
<ul style="list-style-type: none"> <li><b>In large or long term spike camps use helicopters, boats, or pack stock to deliver portable backcountry latrines and remove human waste if necessary. If camp does not have adequate pack, boat, or air support for human waste management, establish community latrines well away from water sources and common areas. Use human waste bags, if necessary.</b></li> <li><b>Minimize ground disturbance on the Moore Point and Meadow Creek alluvial fans in order to protect sensitive resources.</b></li> </ul> <p><b>Ensure hazard mitigations and IWI protocols are in place before taking action.</b></p>						
9. Division/Group Communication Summary						
<b>See Communications Plan</b>						
Prepared by (Resource Unit Ldr) <i>Meredith Butcher</i>		Approved by (Planning Sect. Ch.) <i>Aileen Nichols</i>		Date <b>06/22/2024</b>	Time <b>2000</b>	

<b>DIVISION ASSIGNMENT LIST</b>				1. Branch <b>I</b>	2. Division <b>Z</b>	
3. Incident Name <b>Pioneer</b>			4. Operational Period Date: <b>06/23/2024</b> Time: <b>0600-2200</b>			
5. Operations Personnel						
Operations Chief	<b>John Spencer Whitney Machado - t</b>		Branch Director	<b>Matt James</b>		
Safety Officer	<b>Ray Hershey</b>		Division Supervisor	<b>Robert Boles Pat Chism - t</b>		
6. Resources Assigned this Period						
Strike Team/Task Force/Resource Designator		Leader	# Persons	LWD	Drop Off PT./Time	Pick Up PT./Time
1	<b>O-48 TFLD</b>	<b>Jeff Coburn</b>	<b>1</b>	<b>6/26</b>		
2						
3	<b>C-13 CRW1 Vale IHC</b>	<b>Glen Heitz</b>	<b>20</b>	<b>7/4</b>		
4						
5	<b>O-41 WFM1 Eagle Cap</b>	<b>Gabe Hale</b>	<b>10</b>	<b>6/25</b>		
6						
7	<b>A-23 Boise Helitack</b>	<b>Jacob Campbell</b>	<b>5</b>	<b>6/23</b>		
8						
9	<b>A-27 UR-31</b>	<b>Ryan Gregg</b>	<b>4</b>	<b>6/26</b>		
10						
11	<b>O-75 MEDIC 4</b>	<b>Nathan Etherington</b>	<b>1</b>	<b>6/28</b>		
12	<b>O-51 MEDIC 1</b>	<b>Remington Becker</b>	<b>1</b>	<b>6/26</b>		
13						
14	<b>O-63 SOF2</b>	<b>Larry Wright</b>	<b>1</b>	<b>6/24</b>		
15						
16						
17						
18						
19						
7. Control Operations:		<b>Meal count</b>	<b>43</b>			
<b>Task:</b> Contain fire spread to the southwest where terrain and fuels allow for high probability of success. Assess fire perimeter progression to the west/southwest at higher elevations.						
<b>Purpose:</b> To slow fire progression, provide time for suppression tactics, and prep around critical values.						
<b>End state:</b> Minimize fire impacts to critical values including private inholdings and Forest Service infrastructure.						
8. Special Instructions:						
<ul style="list-style-type: none"> <li><b>In large or long term spike camps use helicopters, boats, or pack stock to deliver portable backcountry latrines and remove human waste if necessary. If camp does not have adequate pack, boat, or air support for human waste management, establish community latrines well away from water sources and common areas. Use human waste bags, if necessary.</b></li> <li><b>Ensure hazard mitigations and IWI protocols are in place before taking action.</b></li> </ul>						
9. Division/Group Communication Summary						
<b>See Communications Plan</b>						
Prepared by (Resource Unit Ldr) <i>Meredith Butcher</i>		Approved by (Planning Sect. Ch.) <i>Aileen Nichols</i>		Date <b>06/22/2024</b>	Time <b>2000</b>	



DIVISION ASSIGNMENT LIST				1. Branch <b>II</b>		2. Division <b>D</b>	
3. Incident Name <b>Pioneer</b>				4. Operational Period Date: <b>06/23/2024</b> Time: <b>0600-2200</b>			
5. Operations Personnel							
Operations Chief		<b>John Spencer Whitney Machado - t</b>		Branch Director		<b>Thom Taylor</b>	
Safety Officer		<b>Ray Hershey</b>		Division Supervisor		<b>Ben Lippert Silas Baffa - t</b>	
6. Resources Assigned this Period							
Strike Team/Task Force/Resource Designator		Leader	# Persons	LWD	Drop Off PT./Time		Pick Up PT./Time
<b>1</b>	<b>O-183 TFLD</b>	<b>Harley Hamman</b>	<b>1</b>	<b>7/6</b>	<b>Stehekin</b>		<b>Stehekin</b>
<b>2</b>	<b>O-147 SMOD LNP CREW 76</b>	<b>Sara Martinez</b>	<b>7</b>	<b>7/3</b>	<b>Stehekin</b>		<b>Stehekin</b>
<b>3</b>	<b>O-148 SMOD HVP CREW 1</b>	<b>Brent Webb</b>	<b>10</b>	<b>7/3</b>	<b>Stehekin</b>		<b>Stehekin</b>
<b>4</b>	<b>O-218 SMOD Olympic</b>	<b>Jonah Gray</b>	<b>10</b>	<b>7/6</b>	<b>Stehekin</b>		<b>Stehekin</b>
<b>5</b>	<b>O-184 FELB</b>	<b>Marty Cozart</b>	<b>1</b>	<b>7/6</b>	<b>Stehekin</b>		<b>Stehekin</b>
<b>6</b>	<b>O-186 FMOD Kintner Timber</b>	<b>Cory Kintner</b>	<b>2</b>	<b>7/6</b>	<b>Stehekin</b>		<b>Stehekin</b>
<b>7</b>	<b>O-185 FMOD Brothers Fire</b>	<b>Levi Merritt</b>	<b>2</b>	<b>7/6</b>	<b>Stehekin</b>		<b>Stehekin</b>
<b>8</b>	<b>O-166 REAF</b>	<b>Jordan Spaak</b>	<b>1</b>	<b>7/4</b>	<b>Stehekin</b>		<b>Stehekin</b>
<b>9</b>	<b>O-167 ARCH</b>	<b>Jason Wright</b>	<b>1</b>	<b>7/5</b>	<b>Stehekin</b>		<b>Stehekin</b>
<b>10</b>	<b>O-165 REMS 2</b>	<b>Brayden Kirk</b>	<b>4</b>	<b>7/3</b>	<b>Stehekin</b>		<b>Stehekin</b>
<b>11</b>	<b>++C-11 CRW1 Redmond IHC</b>	<b>Dave Varon</b>	<b>20</b>	<b>6/28</b>	<b>Meals Provided out of Lucerne</b>		
<b>12</b>	<b>++O-129 FELB</b>	<b>Mel Tenneson</b>	<b>1</b>	<b>7/1</b>	<b>Meals Provided out of Lucerne</b>		
<b>13</b>	<b>++O-127 FMOD Rainstorm</b>	<b>Kendall Cain</b>	<b>2</b>	<b>7/1</b>	<b>Meals Provided out of Lucerne</b>		
<b>14</b>	<b>++O-128 FMOD Rainstorm</b>	<b>Mike Lind</b>	<b>2</b>	<b>7/1</b>	<b>Meals Provided out of Lucerne</b>		
<b>15</b>	<b>++O-142 SOF2</b>	<b>Kelly Jensen</b>	<b>1</b>	<b>7/1</b>	<b>Meals Provided out of Lucerne</b>		
7. Control Operations:		<b>Meal count</b>	<b>65</b>				
<p><b>Task:</b> Begin construction of contingency lines around the community of Stehekin. Look for opportunities to contain fire spread in and around Flick Creek area where terrain and fuels allow for highest probability of success.</p> <p><b>Purpose:</b> Minimize fire impacts to critical values including private inholdings, the community of Stehekin, and Forest Service infrastructure.</p> <p><b>End state:</b> Critical values including private inholdings, the community of Stehekin, and Forest Service infrastructure are not impacted by the Pioneer fire, while minimizing fire impacts and acres burned utilizing historic wildfire control features and natural barriers.</p>							
8. Special Instructions:							
<ul style="list-style-type: none"> <li><b>In large or long term spike camps use helicopters, boats, or pack stock to deliver portable backcountry latrines and remove human waste if necessary. If camp does not have adequate pack, boat, or air support for human waste management, establish community latrines well away from water sources and common areas. Use human waste bags, if necessary.</b></li> <li><b>All operational personnel working on USFS lands will need to conduct a thorough inspection for invasive species seeds on boots including laces, clothing, and gear prior to entering NPS lands.</b></li> <li><b>Only fresh (direct from the cache) hose should be utilized on NPS lands to prevent the transport of invasive species seeds.</b></li> <li><b>Hose used on USFS lands should not be used on NPS lands and hose used on NPS lands should not be used on USFS lands to prevent the spread of invasives species seeds.</b></li> <li><b>Cargo loads being transported onto NPS lands should be inspected for invasive weed seed prior to flight.</b></li> <li><b>Ensure hazard mitigations and IWI protocols are in place before taking action.</b></li> </ul> <p><b>++ Meals are provided from Lucerne.</b></p>							
9. Division/Group Communication Summary							
<b>See Communications Plan</b>							
Prepared by (Resource Unit Ldr) <i>Meredith Butcher</i>			Approved by (Planning Sect. Ch.) <i>Aileen Nichols</i>			Date <b>06/22/2024</b>	Time <b>2000</b>

<b>DIVISION ASSIGNMENT LIST</b>				1. Branch <b>V</b>	2. Division <b>S</b>	
3. Incident Name <b>Pioneer</b>				4. Operational Period Date: <b>06/23/2024</b> Time: <b>0600-2200</b>		
5. Operations Personnel						
Operations Chief		<b>John Spencer Whitney Machado - t</b>		Branch Director		<b>Spencer Gregory</b>
Safety Officer		<b>Ray Hershey</b>		Division Supervisor		<b>Anna Graves Holt Jaeger - t</b>
6. Resources Assigned this Period						
Strike Team/Task Force/Resource Designator		Leader	# Persons	LWD	Drop Off PT./Time	Pick Up PT./Time
1	O-112 TFLD	David Ortlund	1	7/1	Camp 4 Spike	Camp 4 Spike
2	O-113 TFLD - t	Gavin Young	1	7/1	Camp 4 Spike	Camp 4 Spike
3	O-110 TFLD	Shane Clifton	1	6/30	Camp 4 Spike	Camp 4 Spike
4	O-111 TFLD - t	Lars Olson	1	6/30	Camp 4 Spike	Camp 4 Spike
5	O-115 HEQB	Garrett Hansen	1	6/30	Camp 4 Spike	Camp 4 Spike
6	O-117 HEQB - t	Ian Fox	1	6/30	Camp 4 Spike	Camp 4 Spike
7	O-130 FELB	Rob Winkler	1	7/2	Camp 4 Spike	Camp 4 Spike
8	O-126 FMOD Fire Contracting Serv.	Ethan Wilson	2	7/1	Camp 4 Spike	Camp 4 Spike
9	**C-10 CR2I Methow Valley IA	Benjamin Boucher	23	6/29	Camp 4 Spike	Camp 4 Spike
10	**C-18 CR2I Colville	Jacob Morse	21	7/6	Camp 4 Spike	Camp 4 Spike
11	E-73 WTS1 Strand Tenders	Wade Strand	1	6/27	ICP	ICP
12	E-78 WTS2 King Hydroseeding	Don Warden	1	6/27	ICP	ICP
13	E-92 DZR3 Batchelor Excavation	Jay Batchelor	2	6/28	Camp 4 Spike	Camp 4 Spike
14	E-101 SKG2 NW Diesel Dudes	John Lotze	2	7/3	Camp 4 Spike	Camp 4 Spike
15	E-102 SKG2 Dukes Equipment	Justin Durston	2	7/1	ICP	ICP
16	E-103 MBM2 Marcon Timber	Dave Landes	2	7/1	ICP	ICP
17	E-104 MBM2 Havillah Logging	Albert Johnson	2	7/1	ICP	ICP
18	E-105 MBM2 Justin Pitts	Justin Pitts	2	7/1	ICP	ICP
19	E-69 FTRA Morris Forestry	Clate Dawson	2	7/5	ICP	ICP
20	**E-118 ENG6 Little Pend Oreille	Thomas Boggs	5	7/1	Camp 4 Spike	Camp 4 Spike
21						
22	O-43 REMS 1	Caitlin Lucia	4	6/25	Camp 4 Spike	Camp 4 Spike
23	O-141 SOFR	Kevin Pfister	1	7/2	Camp 4 Spike	Camp 4 Spike
24						
7. Control Operations:		<b>Meal count</b>	<b>79</b>			
<b>Task:</b> Implementation of control from South Navaree CG to Lake Chelan. <b>Purpose:</b> To establish a barrier to fire to the east of Safety Harbor Creek. <b>End state:</b> Control line anchored from South Navaree CG to Lake Chelan.						
8. Special Instructions:						
<ul style="list-style-type: none"> <li>Ensure hazard mitigations and IWI protocols are in place before taking action.</li> </ul> <b>** Denotes available for Initial Attack. E-18, E-93, E-94 UTV's on DIV S.</b>						
9. Division/Group Communication Summary						
<b>See Communications Plan</b>						
Prepared by (Resource Unit Ldr) <i>Meredith Butcher</i>		Approved by (Planning Sect. Ch.) <i>Aileen Nichols</i>		Date <b>06/22/2024</b>	Time <b>2000</b>	

<b>DIVISION ASSIGNMENT LIST</b>				1. Branch <b>V</b>		2. Division <b>Contingency</b>	
3. Incident Name <b>Pioneer</b>				4. Operational Period Date: <b>06/23/2024</b> Time: <b>0600-2200</b>			
5. Operations Personnel							
Operations Chief		<b>John Spencer Whitney Machado - t</b>		Branch Director		<b>Spencer Gregory</b>	
Safety Officer		<b>Ray Hershey</b>		Division Supervisor		<b>Andy Hall Aaron Bruning - t</b>	
6. Resources Assigned this Period							
Strike Team/Task Force/Resource Designator		Leader	# Persons	LWD	Drop Off PT./Time		Pick Up PT./Time
<b>1</b>	<b>O-83 TFLD</b>	<b>Mark Lewis</b>	<b>1</b>	<b>6/29</b>	<b>ICP</b>		<b>ICP</b>
<b>2</b>	<b>O-114 HEQB</b>	<b>TJ Whitehall</b>	<b>1</b>	<b>7/1</b>	<b>ICP</b>		<b>ICP</b>
<b>3</b>	<b>O-116 HEQB - t</b>	<b>Tyler Meyer</b>	<b>1</b>	<b>6/30</b>	<b>ICP</b>		<b>ICP</b>
<b>4</b>	<b>E-74 WTS2 MVP Team</b>	<b>Dale Conrad</b>	<b>1</b>	<b>6/27</b>	<b>ICP</b>		<b>ICP</b>
<b>5</b>	<b>E-75 WTS2 David Rains</b>	<b>Ron Laymance</b>	<b>1</b>	<b>6/30</b>	<b>ICP</b>		<b>ICP</b>
<b>6</b>	<b>E-83 WTS2 King Hydroseeding</b>	<b>Joseph Ivie</b>	<b>1</b>	<b>6/27</b>	<b>ICP</b>		<b>ICP</b>
<b>7</b>	<b>E-76 WTS2 Mountain View Wildfire</b>	<b>Wick Fife</b>	<b>1</b>	<b>7/1</b>	<b>ICP</b>		<b>ICP</b>
<b>8</b>	<b>E-143 EXC2 Delange Enterprises</b>	<b>Pete Delange</b>	<b>2</b>	<b>7/5</b>	<b>ICP</b>		<b>ICP</b>
<b>9</b>	<b>E-71 GRD2 Pettet</b>	<b>Mark Rowe</b>	<b>2</b>	<b>6/27</b>	<b>ICP</b>		<b>ICP</b>
<b>10</b>	<b>E-72 GRD2 Scotts Excavating</b>	<b>Tim Breezy</b>	<b>2</b>	<b>7/4</b>	<b>ICP</b>		<b>ICP</b>
<b>11</b>	<b>E-100 DZR4 Douglas Logging</b>	<b>Steve Douglas</b>	<b>2</b>	<b>7/1</b>	<b>ICP</b>		<b>ICP</b>
<b>12</b>	<b>**E-117 ENG6 Wenatchee River</b>	<b>Nicholas Gonzales</b>	<b>5</b>	<b>7/3</b>	<b>ICP</b>		<b>ICP</b>
<b>13</b>	<b>O-68 MEDIC 2</b>	<b>Joel Bower</b>	<b>1</b>	<b>7/3</b>	<b>ICP</b>		<b>ICP</b>
<b>14</b>	<b>O-76 MEDIC 5</b>	<b>Brian Linacre</b>	<b>1</b>	<b>7/7</b>	<b>ICP</b>		<b>ICP</b>
<b>15</b>							
<b>16</b>	<b>O-85 SOFR</b>	<b>Andy Murrin</b>	<b>1</b>	<b>6/27</b>	<b>ICP</b>		<b>ICP</b>
<b>17</b>	<b>E-19, E-44 UTV's</b>						
<b>18</b>							
<b>19</b>							
<b>20</b>							
<b>21</b>							
7. Control Operations:		<b>Meal count</b>	<b>23</b>				
<b>Task:</b> Scout proposed control lines at Oss Peak and Johnson Creek. Assess structures from Deer Point to Mitchel Creek.							
<b>Purpose:</b> To protect critical values at risk.							
<b>End state:</b> To have established control lines in place that correspond to Pioneer Fire strategic plan.							
8. Special Instructions:							
<ul style="list-style-type: none"> <li>• <b>Ensure hazard mitigations and IWI protocols are in place before taking action.</b></li> </ul>							
<b>** Denotes available for Initial Attack.</b>							
9. Division/Group Communication Summary							
<b>See Communications Plan</b>							
Prepared by (Resource Unit Ldr) <i>Meredith Butcher</i>			Approved by (Planning Sect. Ch.) <i>Aileen Nichols</i>			Date <b>06/22/2024</b>	Time <b>2000</b>

<b>DIVISION ASSIGNMENT LIST</b>			1. Branch <b>V</b>		2. Division <b>Staging</b>	
3. Incident Name <b>Pioneer</b>			4. Operational Period Date: <b>06/23/2024</b> Time: <b>0600-2200</b>			
5. Operations Personnel						
Operations Chief		<b>John Spencer Whitney Machado - t</b>		Branch Director		<b>Spencer Gregory</b>
Safety Officer		<b>Ray Hershey</b>		Staging Manager		<b>Jon Merager</b>
6. Resources Assigned this Period						
Strike Team/Task Force/Resource Designator		Leader	# Persons	LWD	Drop Off PT./Time	Pick Up PT./Time
1						
2						
3						
4						
5						
6						
7						
8						
9						
10						
11						
12						
13						
14						
15						
16						
17						
18						
19						
20						
21						
7. Control Operations:		<b>Meal count</b>				
<b>Task:</b> Remain ready and available for divisions as needed.						
<b>Purpose:</b> To assist divisions as needed to complete missions as appropriate.						
<b>End state:</b> Support suppression efforts as needed to protect communities.						
8. Special Instructions:						
9. Division/Group Communication Summary						
<b>See Communications Plan</b>						
Prepared by (Resource Unit Ldr) <i>Meredith Butcher</i>			Approved by (Planning Sect. Ch.) <i>Aileen Nichols</i>		Date <b>06/22/2024</b>	Time <b>2000</b>

<b>DIVISION ASSIGNMENT LIST</b>				1. Branch		2. Division <b>Boat</b>	
3. Incident Name <b>Pioneer</b>				4. Operational Period Date: <b>06/23/2024</b> Time: <b>0600-2200</b>			
5. Operations Personnel							
Operations Chief		<b>John Spencer Whitney Machado - t</b>		Branch Director			
Safety Officer		<b>Ray Hershey</b>		Division Supervisor		<b>Charlie Cronk</b>	
6. Resources Assigned this Period							
Strike Team/Task Force/Resource Designator		Leader	# Persons	LWD	Drop Off PT./Time		Pick Up PT./Time
<b>1</b>	<b>O-161 TFLD Boat Coordinator</b>		<b>Cameron Chambers</b>	<b>1</b>	<b>7/3</b>	<b>Lucerne</b>	<b>Lucerne</b>
<b>2</b>	<b>O-50 TFLD</b>		<b>Todd Olson</b>	<b>1</b>	<b>6/26</b>	<b>Lucerne</b>	<b>Lucerne</b>
<b>3</b>	<b>O-160 TFLD</b>		<b>Brian Turner</b>	<b>1</b>	<b>7/3</b>	<b>ICP</b>	<b>ICP</b>
<b>4</b>	<b>O-162 HEQB</b>		<b>Nicolas Glatt</b>	<b>1</b>	<b>7/3</b>	<b>ICP</b>	<b>ICP</b>
<b>5</b>	<b>O-163 HEQB-t</b>		<b>Emma Ahlrichs</b>	<b>1</b>	<b>7/3</b>	<b>Lucerne</b>	<b>Lucerne</b>
<b>6</b>							
<b>7</b>	<b>E-1 TBOT WA-NCP NPS</b>			<b>1</b>		<b>Stehekin</b>	<b>Stehekin</b>
<b>8</b>	<b>E-3 TBOT Chelan Co. F&amp;R#7</b>			<b>2</b>		<b>DIVS Z</b>	<b>DIVS Z</b>
<b>9</b>	<b>E-12 TBOT WA-OWF Chelan RD</b>		<b>Day Off on 6/23</b>	<b>1</b>		<b>25 Mile</b>	<b>25 Mile</b>
<b>10</b>	<b>E-91 TBOT DNR Mud Puppy</b>			<b>1</b>		<b>25 Mile</b>	<b>25 Mile</b>
<b>11</b>	<b>E-98 TBOT Chelan County Sheriffs</b>			<b>1</b>		<b>Lucerne</b>	<b>Lucerne</b>
<b>12</b>	<b>E-43 TBOT Llama Boat</b>			<b>1</b>		<b>Lucerne</b>	<b>Lucerne</b>
<b>13</b>							
<b>14</b>							
<b>15</b>	<b>O-136 MEDIC 6</b>		<b>Steve Medina</b>	<b>1</b>	<b>7/1</b>	<b>Lucerne</b>	<b>Lucerne</b>
<b>16</b>	<b>O-152 EMT 1</b>		<b>Ivan Huld</b>	<b>1</b>	<b>7/1</b>	<b>Lucerne</b>	<b>Lucerne</b>
<b>17</b>							
<b>18</b>							
<b>19</b>							
<b>20</b>							
<b>21</b>							
7. Control Operations:			<b>Meal count</b>	<b>14</b>			
<b>Task:</b> Boats will support firefighters with logistical capability and capacity.							
<b>Purpose:</b> Supporting lakeside incident objectives requires firefighter mobility via boats.							
<b>End state:</b> Firefighters are supported by boat availability and ready site access.							
8. Special Instructions:							
<ul style="list-style-type: none"> <li><b>In large or long term spike camps use helicopters, boats, or pack stock to deliver portable backcountry latrines and remove human waste if necessary. If camp does not have adequate pack, boat, or air support for human waste management, establish community latrines well aay from water sources and common areas. Use human waste bags, if necessary.</b></li> <li><b>Boat Coordinator will be located at Fields Point.</b></li> <li><b>Ensure hazard mitigations and IWI protocols are in place before taking action.</b></li> </ul>							
9. Division/Group Communication Summary							
<b>See Communications Plan</b>							
Prepared by (Resource Unit Ldr) <i>Meredith Butcher</i>			Approved by (Planning Sect. Ch.) <i>Aileen Nichols</i>			Date <b>06/22/2024</b>	Time <b>2000</b>

<b>DIVISION ASSIGNMENT LIST</b>			1. Branch		2. Division <b>H</b>	
3. Incident Name <b>Pioneer</b>			4. Operational Period Date: <b>06/23/2024</b> Time: <b>0600-2200</b>			
5. Operations Personnel						
Operations Chief		<b>John Spencer Whitney Machado - t</b>		Branch Director		
Safety Officer		<b>Ray Hershey</b>		Division Supervisor		<b>Rob Poyner</b>
6. Resources Assigned this Period						
	Strike Team/Task Force/Resource Designator	Leader	# Persons	LWD	Drop Off PT./Time	Pick Up PT./Time
1						
2						
3						
4						
5						
6						
7						
8						
9						
10						
11						
12						
13						
14						
15						
16						
17						
18						
19						
20						
21						
22						
7. Control Operations:		<b>Meal count</b>				
<p><b>Task:</b> Complete a comprehensive inventory of critical values, proposed control line options to protect those values and the risk to responders associated with those actions in SA4.</p> <p><b>Purpose:</b> To analyze the strategy as probability vs success.</p> <p><b>End state:</b> A long term durable strategic plan for the Pioneer Fire.</p>						
8. Special Instructions:						
<ul style="list-style-type: none"> <li><b>In large or long term spike camps use helicopters, boats, or pack stock to deliver portable backcountry latrines and remove human waste if necessary. If camp does not have adequate pack, boat, or air support for human waste management, establish community latrines well away from water sources and common areas. Use human waste bags, if necessary.</b></li> <li><b>Ensure hazard mitigations and IWI protocols are in place before taking action.</b></li> </ul>						
9. Division/Group Communication Summary						
<b>See Communications Plan</b>						
Prepared by (Resource Unit Ldr)		Approved by (Planning Sect. Ch.)		Date	Time	
<i>Meredith Butcher</i>		<i>Aileen Nichols</i>		<b>06/22/2024</b>	<b>2000</b>	

AIR OPERATIONS SUMMARY ICS-220													
Incident Name / Number		Sunrise	Sunset	Airport	Pumpkin	Time Prepared		Date Prepared		Prepared By			
Pioneer /WA-SES-000173		05:02	21:02	S10	21:32	Shutdown 21:00		Operational Period - Date 6/24/2024		Operational Period - Time 0600-2200			
General Remarks, Safety Notes, Hazards, Air Operations Special Equipment, etc.													
<p>*Order All Aircraft through Command to Helibase.</p> <p>*Sanitize Buckets before changing water sources.</p> <p>*Clear drop area/line before initiating drop sequence.</p> <p>*Be cognizant of all overhead and environmental hazards while working with Aircraft.</p> <p>*All GPS is to be collected in DMM</p> <p>*Aviation daily cost to: 2024.pioneer.finance@firenet.gov</p> <p>*Aviation daily cost to: pioneerhelibase2024@gmail.com</p>													
Helibase Information		Pioneer/ Helibase		Helicopters - GACC Prepo		Helibase Information		Helicopters - GACC Prepo		Helibase Information			
Location 47.51.96 N 119.56.56 W Phone (971) 762-8575		Location 47.51.96 N 119.56.56 W Phone (971) 762-8575		Name Nancy Barker Dave Moore Ben Thayer Ben Wagner Jerry Rule Jerry Messenger Chad Bergren Callan Wilkins Ryan Gregg		Position AOBD ASGS ASGS-T HEBM-T HEBM HLCO HLCO-T UAS		Phone (253) 312-4301 (513) 616-9192 (208) 830-1636 (206) 473-2165 (253) 548-7711 (541) 306-0907 (541) 219-2594 (509) 899-3876 (360) 852-2296		Equipment/Supplies Com Trailer E-20 Hand Wash Station E-47 Water Tender E-77 Water Tender E-14			
Incident Frequencies		RX	Tone	TX	Tone	AM/FM							
Air to Air Primary (A-8)		123.4000		123.4000		AM							
Air to Air Secondary (A-9)		118.2750		118.2750		AM							
A/G Pri Tactical (A-10)		169.1500		169.1500		FM							
A/G Sec Operational (A-11)		168.4000		168.4000		FM							
A/G 3 Logs (A-47)		166.6125		166.6125		FM							
DECK		163.1000		163.1000		FM							
TOLC (A-77)		123.0250		123.0250		AM							
COMMAND		See ICS 205 Communications Plan											
AIR GUARD		168.6250		168.6250	110.9	FM							
VMED 29		155.3475	156.7	155.3475	156.7	FM							
HELICOPTERS - Assigned													
FAA #	TYPE	Make/Model	Helibase	Start	Avail	Remarks	FAA #	TYPE	Make/Model	Airport	Start	Avail	Remarks
HB-16FH (A-22)	1	UH-60	Chelan	0800	0900	BKT/LL	H-205TK	2	Bell 205A	Chelan	0800	0900	Rapps
HB-17FH (A-23)	1	UH-60A	Chelan	0800	0900	BKT/LL							
HB-161KA (A-24)	1	K-1200	Chelan	0800	0900	BKT/LL							
HB-344RA (A-45)	1	CH-47D	Chelan	0800	0900	BKT/LL							
H-304HA (A-31)	2	Bell 205A	Chelan	0800	0900	BKT/LL							
H-407RL (A-1)	3	407	Chelan	0800	0900	Wenatchee Short-haul							
H-684H (A-46)	3	407	Chelan	0800	0900	BKT/LL/Recon/HLCO							
H-544AS (A-60)	3	AS350B3	Chelan	0800	0900	HLCO/Recon							
UAS													
Call Sign	Type	Make/Model	Base	Start	Avail	Remarks	FAA #	Call Sign	Make/Model	Base	Start	Avail	Remarks
UR-31	3	AltaX	Lucerne	0600	2200	IR/PSD	N-586DV (A-42)	610	Commander	WEN	0900	1000	Assigned ATGS
							H-544AS (A-60)	4AS	AS350B3	Chelan	0800	0900	Assigned HLCO
							N-197GB	617	Commander	Chelan	0900	1000	Wenatchee IA (not assigned)

# INCIDENT RADIO COMMUNICATIONS PLAN (ICS 205)

## Controlled Unclassified Information//Basic

1. Incident Name:		2. Date/Time Prepared:		3. Operational Period:						
<b>PIONEER</b>		Date: 06/22/2024 Time: 16:40	Date/Time From: 06/23/2024 0600	Date/Time To: 06/24/2024 0600						
<b>4. Basic Radio Channel Use:</b>										
Zone Group	Ch #	Function	Channel Name/Trunked Radio	Assignment	RX Freq	RX Tone/NAC	TX Freq	TX Tone/NAC	Mode (A, D, or M)	Remarks
	1	TACTICAL	TAC 1	DIV A	168.0500	123.0	168.0500	123.0	A	
	2	TACTICAL	TAC 2	DIV D & S	168.2000	123.0	168.2000	123.0	A	USE LOW PWR ON RIDGES
	3	TACTICAL	TAC 3	DIV Z	168.6000	123.0	168.6000	123.0	A	
	4	TACTICAL	TAC 4	DIV H	166.7250	123.0	166.7250	123.0	A	
	5	TACTICAL	TAC 5	CONTINGENCY	166.7750	123.0	166.7750	123.0	A	
	6	TACTICAL	TAC 6	BOAT	168.2500	123.0	168.2500	123.0	A	
	7	COMMAND	CMD 7	ALL	168.4750	123.0	165.4000	123.0	A	CHELAN BUTTE
	8	COMMAND	CMD 8	ALL	169.5375	123.0	164.7125	123.0	A	OLD MAID MT
	9	COMMAND	CMD 9	ALL	170.4500	123.0	168.1000	123.0	A	MOORE MT
	10	COMMAND	CMD 10	ALL	170.0125	123.0	165.2500	123.0	A	SLIDE RIDGE
	11	COMMAND	CMD 11	ALL	170.4125	123.0	165.9625	123.0	A	FOX MT
	12	TACTICAL	A/G PRI	ALL DIVS	169.1500	000.0	169.1500	000.0	A	
	13	AIR TO GROUND	A/G SEC	ALL DIVS	168.4000	000.0	168.4000	000.0	A	
	14	AIR TO GROUND	A/G 3	ALL DIVS	166.6125	000.0	166.6125	000.0	A	
	15	AIR TO GROUND	VMED 29	ALL DIVS	155.3475	156.7	155.3475	156.7	A	AIR EMS COORDINATION
	16	AIR TO GROUND	AIRGUARD	ALL DIVS	168.6250	000.0	168.6250	110.9	A	EMERGENCY AIRCRAFT CONTACT
<b>5. Special Instructions: 24 hour staffing: PIONEER COMMUNICATIONS PHONE NUMBER: (208) 891-7870 / CURRENT CLONE "PIE 6-21"</b>										
<b>6. Prepared By COML</b>										
				Name: Jarrod Nordloh	Signature: /s/ Jarrod Nordloh					
<b>ICS 205</b>										
				IAP Page	Date/Time: 6/22/2024 21:54					





# OKANOGAN-WENATCHEE NATIONAL FOREST

## Resource Guidelines for Fire Suppression

Fire: Pioneer

Location: Pioneer Creek, North shore of Lake Chelan

Date: 6/18/2024

### Resource Advisors

Lead READ: Brigitte Ranne 509-663-6118, [brigitte.ranne@usda.gov](mailto:brigitte.ranne@usda.gov)

REAF: Hector Rodriguez 509-393-5379, [Hector.Rodriguez3@usda.gov](mailto:Hector.Rodriguez3@usda.gov)

REAF: Eireann Pederson 360-854-8197, [eireann.pederson@usda.gov](mailto:eireann.pederson@usda.gov)

### **HUMAN SAFETY IS THE HIGHEST PRIORITY FOR EVERY EMERGENCY RESPONSE ACTION**

#### *MIST for Spike Camp and Lucerne Forward Operating Base Management*

- Employ minimum impact suppression tactics (MIST) where feasible, especially in remote or sensitive areas.
- If spike camps are necessary, use existing, or previously impacted campsites where available. If existing campsites are not available; use your local resource advisor to help identify the most resilient sites in rocky or sandy soils. Avoid camping in wet meadows, along streams, or on lake shores.
- Store food properly so that it is not accessible to wildlife. Consider hanging food in trees at least 15 feet off the ground and 5 feet from the trunk of the tree, or store food in sealable containers. Store food away from the campsite (300 feet is ideal) to reduce the risk of human and bear (and rodent!) conflicts.
- Do not let garbage and food scraps accumulate in camp. All garbage and food scraps need to be removed from the camp ASAP and before leaving the site.
- Minimize disturbance to land in preparing bedding and campfire sites. Do not clear vegetation, trench, or excavate a flat spot to create bedding sites.
- Do not use nails in trees. Don't construct camp furniture.
- If a campfire is built for warmth in the evening, build either a pit or mound fire. Use dead and down firewood. Use small diameter wood that burns down more cleanly. Don't burn plastics or aluminum - pack it out with the rest of the camp garbage.



- In small spike camp situations (not Lucerne), individuals should use the "cat-hole" method of disposing of human waste. Toilet seats should be located a minimum of 200 feet from water sources. Holes should be dug 6-8 inches deep.

In large or long term spike the camps use helicopters, boats, or pack stock to deliver portable backcountry latrines and remove human waste if necessary. If the camp does not have adequate pack, boat, or air support for human waste management, establish community latrines well away from water sources and common areas. Use human waste bags, if necessary.

### *Dipping and Drafting*

- No cross-dipping between water bodies. All buckets or snorkels should be cleaned, inspected, and dried in the sun if they must be used between lakes. Dipping in small lakes must be pre-approved by the READ or AA.
- When drafting, use already disturbed areas for stream access (road crossings, dispersed campsites) to reduce the need for riparian vegetation clearing.
- Use screens (3/32" inch) for all pumping operations.
- Use containment pads and basins under pumps and fuel cans. Ensure a spill kit is present with every operating pump.

### *Invasive Species*

- The fire is burning within an infestation of common crupina, a WA State Class A Noxious weed. Prevent spread of crupina off site – plan to wash hose and other equipment. Request fire fighters brush boots before boarding boat or **before entering National Park Service Land**.
- Inspect slings and remove all plant/soil material prior to use.
- Ensure all camps, staging areas, helispots and cargo areas are free of invasive plants to prevent spread to un-infested areas.
- Weed wash all vehicles when they arrive to the incident and when demobed.

### *Fisheries /Aquatic Recommendations*

- If trees must be felled in riparian areas for suppression or safety reasons, fell them toward streams where possible and minimize bucking where possible.
- Non-mechanized suppression activities are recommended within Riparian Reserves (150-300 ft from stream channel). For example, consider hand lines instead of dozer lines when feasible.

### *Retardant Use*

- Retardant avoidance areas are present in the fire suppression area for both aquatic and terrestrial species.
- Track all retardant drops – locations and amounts.
- Report all mis-applications ASAP to READ. Monitoring and reporting of misapplications is required.

### *Wet Meadows*

- No line or other disturbance in wet meadows in the Summer Blossom area (east of South Navarre campground above and below the 8200 road) and at Coyote and Poison Springs at the headwaters of their respective creeks.

### *Dry Meadows*

- Minimize disturbance from staging and parking areas in dry meadows. These areas recovery slowly and are vulnerable to invasive plant infestation.

### *White Bark Pine*

- Avoid cutting white bark pine whenever possible. Needles of 5 keep it alive! Ask READ for help with ID.

### *Burnout operations*

- Plan to protect whitebark pine of all ages and mature cold and moist forest during burnouts. READ consultation and line officer approval is required for burn plans that include these forest types.
- During burnouts modify firing to retain large trees, large snags and large down wood in forests whenever possible.
- Minimize total acres burned in burnouts.
- Incorporate typical resource protection measures used in RX burning whenever it is safe and practical to do so (such as retention of green islands in moist areas).
- Provide a map of areas that were burned as part of the burnout operation (for use in emergency consultation).

## **Cultural Resources**

- If cultural resources are discovered during suppression activities, leave on site and notify READ.



## Human Resource Message

### Pioneer Fire

June 23, 2024

#### YOUR RIGHTS AND RESPONSIBILITIES

##### **Rights:**

To work in a harassment-free environment where people treat one another with dignity, equity, courtesy, and respect.

To say “no” to unwelcome advances or requests for favors.

To file complaints or grievances through appropriate avenues.

##### **Responsibilities:**

To behave in a manner that treats people with dignity, equity, courtesy, and respect.

To abide by agency and incident ethics and conduct regulations.

To report any harassment or other inappropriate behavior you observe or experience.

**Margaret Dietrich, Human Resource Specialist/Training Specialist**

**My cell 360-701-3154, or [Team13trsp@outlook.com](mailto:Team13trsp@outlook.com)**

## LOGISTICS HOURS

**Shower:** 0500 - 1200 & 1400 - 2200

**Supply:** 0600 - 2200

**Ground Support:** 0500 - 2200

**Fuel Tender:** 0700 - 2100

**Kitchen:**

Breakfast: 0530 - 0900

Dinner: 1800 - 2100

## PIONEER CONTACT LIST

**Public Information:** 509-210-2926

**Communications:** 208-891-7870

**Check In/Demob:** 509-661-5372

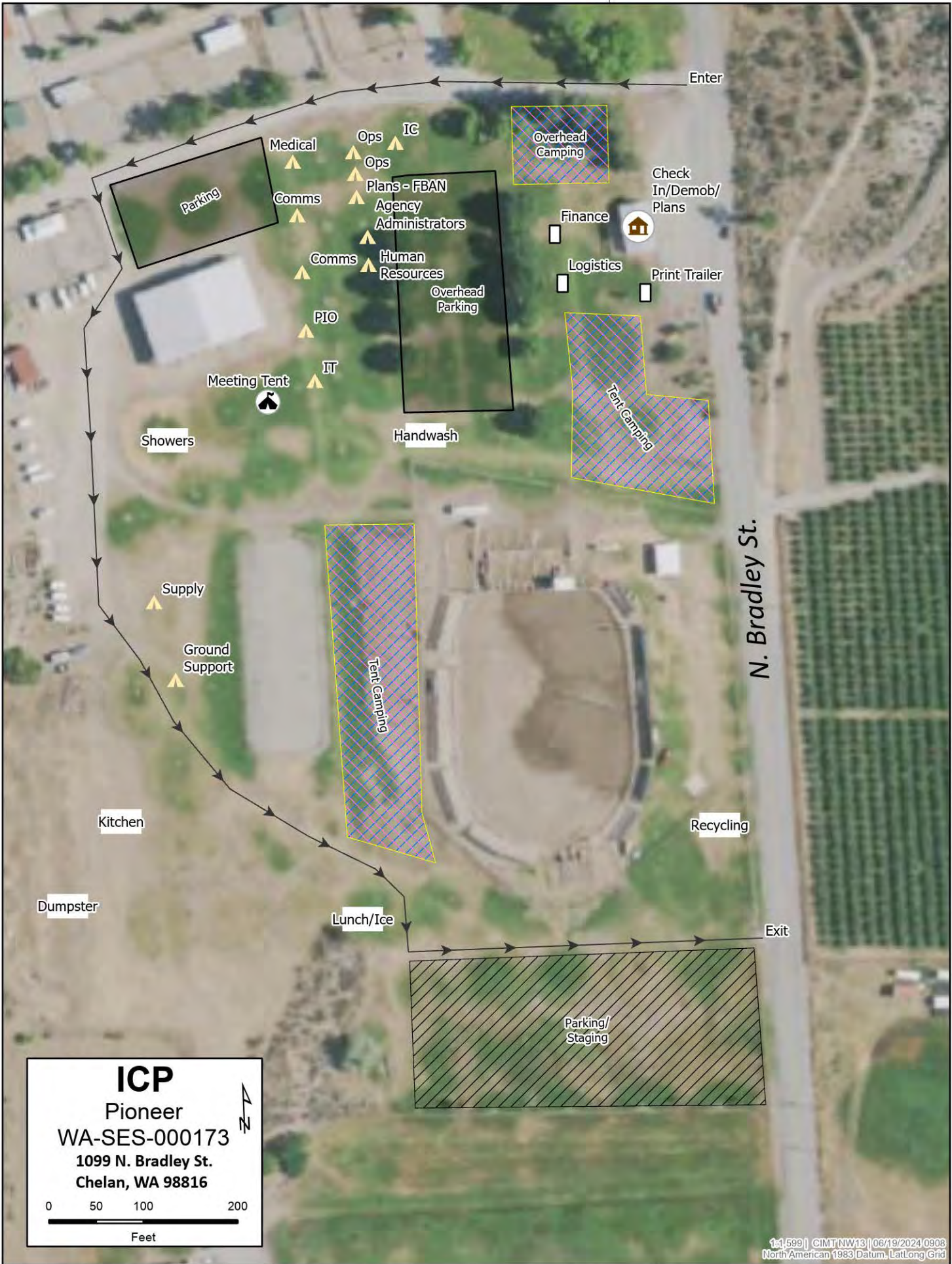
**Medical:** 360-775-5413

**Supply:** 360-827-5382

**Ground Support:** 425-274-6215

**Finance:** Equipment 208-891-6877 & TIME 208-891-8036





**ICP**  
 Pioneer  
 WA-SES-000173  
 1099 N. Bradley St.  
 Chelan, WA 98816

0 50 100 200  
 Feet

▲ N





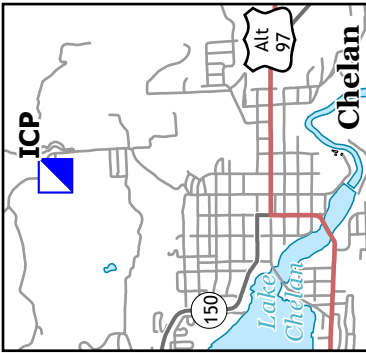
Pioneer

WA-SES-000173

06/23/2024 16hr

4497 acres on 6/22/2024 @ 0115

ICP: Chelan Rodeo Grounds  
1099 N Bradley St.  
Chelan, WA 98816

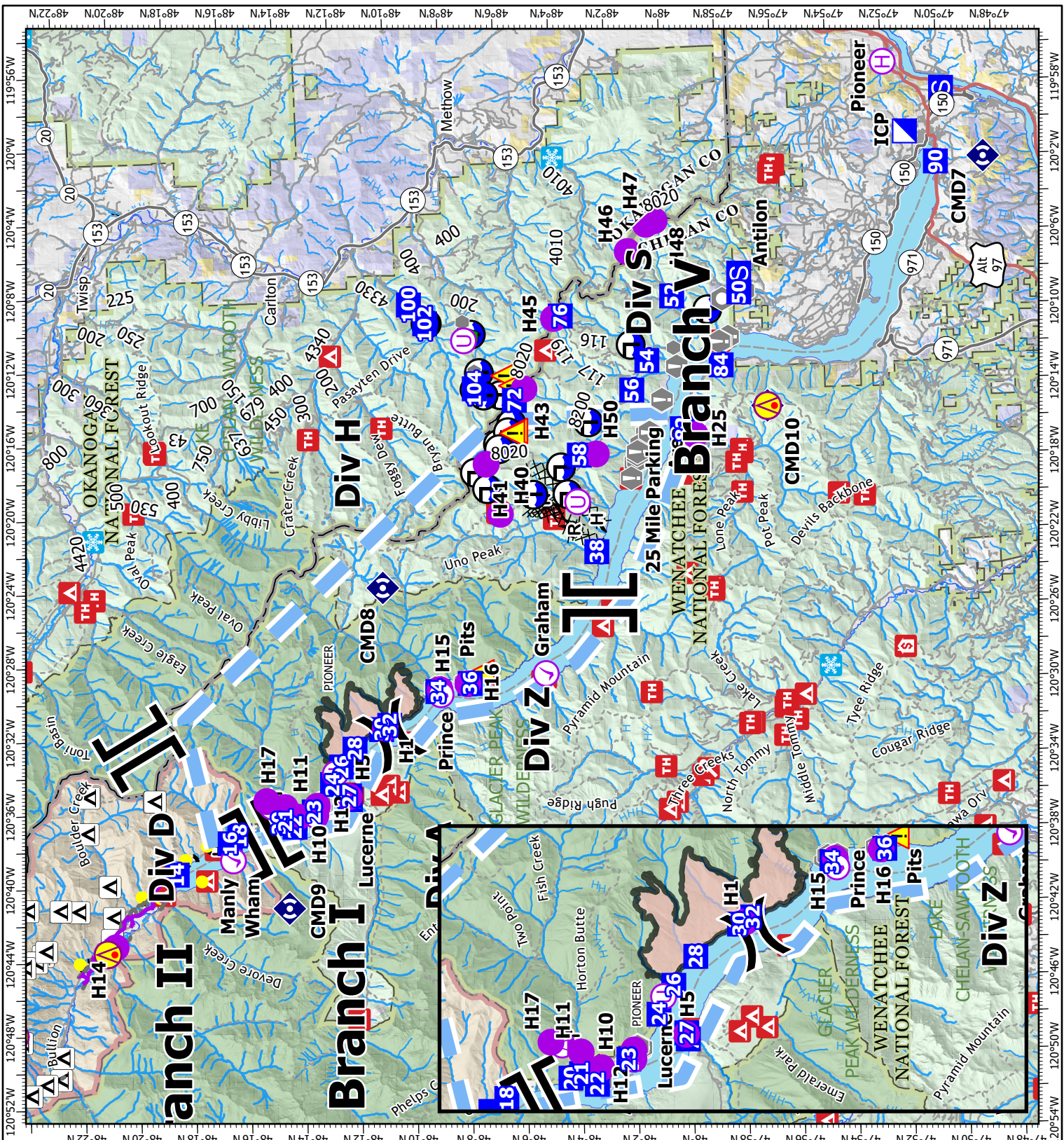


- Aerial Hazard
- Aviation Check Point
- Repair Point
- Repeater
- Hazard
- Helibase
- Sling Site
- Unimproved Landing Area
- Division Break
- Branch Break
- Incident Command Post
- Drop Point
- Camp
- Staging Area
- Value at Risk
- Other
- Landmark
- Completed Dozer Line
- Completed Fuel Break
- Completed Hand Line
- Completed Mixed Construction Line
- Completed Road as Line
- Aerial Avoidance Area
- Other
- Aerial Hazard
- Temporary Flight Restriction
- Wildfire Daily Fire Perimeter

1:355,106 | CMNT NW113 | 6/22/2024 21:48  
Acres from ICP  
North American 1983 Datum, LetLong Grid

0 3.8 7.5 Miles

SCAN ME





NW IMT13  
Line Supply Order

Revised 04/03/2019

Date & Time Order was Placed	Order # (BR+DIVS + #)	Location & Time for Delivery (Division/LZ/DP/Lat Long)	Mode of delivery (Driven/Helo/DIVS to Pick up)

Person placing order (name & time):

Order received in Communications by (name & time):

Order received in Transportation by (name & time):

Order received in Helibase by (name & time):

Order shipped to line unit by (name & time): (Send this sheet to the line with the order)

#	Item	Amount		Item	Amount
1.	Meals, Breakfasts	ea	31.	Slingable Blivet, specify size – 72 or 55 gl	ea
2.	Meals, Lunches	ea	32.	Folding Tank, specify size	ea
3.	Meals, Dinners	ea	33.	Lightweight Pump Kit	ea
4.	Meals, MRE's	cs	34.	Hose, 1 1/2"	ea
5.	Water, 5 gal. cubie	ea	35.	Hose, 1"	ea
6.	Batteries- AA	1-Flat	36.	Hose, 3/4"	ea
7.	Batteries, Specify Type	pk	37.	Reducer, 1 1/2" x 1"	ea
8.	Flagging, Specify type	roll	38.	Reducer, 1" x 3/4"	ea
9.	Gas, raw	gal	39.	Gated "Y", 1 1/2"	ea
10.	Bar Oil	gal	40.	Gated "Y", 1"	ea
11.	2- cycle oil, chainsaw (2.5 oz)	6 pk	41.	Gated "Y", 3/4"	ea
12.	Sleeping Bags	ea	42.	Shut-off Valve, specify size	ea
13.	Gatorade	cs	43.	In-line Tee, 1 1/2" x 1"	ea
14.	Tarps / Plastic	roll	44.	Nozzle, 1 1/2"	ea
15.	Parachute Cord	roll	45.	Nozzle, 1"	ea
16.	Tool, Shovel	ea	46.	Nozzle, 3/4"	ea
17.	Tool, Pulaski	ea	47.	20-25 Person First Aid Kit	ea
18.	Tool, Combi	ea	48.	Chainsaw Kit	ea
19.	Tool, McLeod	ea	49.	Toilet Paper (96 per case)	cs
20.	Tool, Specify Type	ea	50.	1000 ft. Hose Lay Kit	ea
21.	Fusee	cs	51.	Garbage Bags	bx
22.	Drip Torch	ea	52.	Leadline	ea
23.	Drip Torch Mix, 5 gal.	ea	53.	Spike Supply Kit	ea
24.	Coffee Kit w/propane	ea	54.	Dolmar (6 per case)	ea
25.	Swivel	ea	55.	Sprinkler Kit	ea
26.	Backpack Pump	ea	56.	LINE Spike Supply Kit	ea
27.	Pumpkin, specify size	ea	57.	Duct Tape	roll
28.	Mark 3 Pump	ea	58.	House Wrap	roll
29.	Mark 3 Pump Accessory Kit	ea	59.	Staple Gun w/staples	ea
30.	2-cycle oil, high pressure pump	qt			



**Team Ordering/Timeline Process:**

1100 - Last call to change spike camp resource hot food location.  
 1600 - DIVS to have next day's resource order ready for Planning OPS.

- All orders will be placed through DIVS or Branch.
- DIVS or Branch will place all orders through Communications Unit.
- All orders will be tracked using the process found on the front of this form.

**1000 ft. Hose Lay Kit  
(Order as "#50")**

**Spike Supply Kit  
(Order as "#53")**

Quantity	NFES#	Item	Weight	Quantity	NFES#	Item	Weight
10 ea	1239	Hose 1½"	125 lbs	2 rolls	0071	Duct Tape	4 lbs
10 ea	1238	Hose 1"	84 lbs	4 rolls	0222	Fiber Tape	2lbs
20 ea	1016	Hose ¾"	25 lbs	1 case	0021	Trash Bags	21 lbs
5 ea	0231	1½" Gated "Y"	20 lbs	1 case	0465	Cups for hot liquid	18 lbs
5 ea	0259	1" Gated "Y"	13 lbs	2 ea	0070	16x24 Tent fly	40 lbs
10 ea	0904	¾" Gated "Y"	3 lbs	3 ea	0027	Water Wash Basins	2 lbs
5 ea	0010	Reducers 1½" - 1"	3 lbs	1 case		Liquid Hand Soap / pump	10 lbs
5 ea	0733	Reducers 1" - ¾"	2 lbs	18 cases	1842	MRE's	18 x 20= 360 lbs
10 ea	0738 or 0835	Ball Valve ¾"	5 lbs	48 ea	0022	Sleeping bags (dbl. bag)	48 x 5= 240 lbs
10 ea	0138	Nozzle, 1"	5 lbs	3 cases	0030	AA Batteries, 24 pkg./case	90 lbs
10 ea	0136	Nozzle ¾"	5 lbs	1 case	0240	Paper Towels	41 lbs
5 ea	0230	Tee 1½x1½x1" /valve	5 lbs	1 case	0142	Toilet Paper	44 lbs
<b>LINE Spike Supply Kit (Order as "#56")</b>				1 roll	0144	Plastic sheeting	45 lbs
				1 roll	0533	P-Cord	9 lbs
Quantity	NFES#	Item	Weight	20 ea	7443	Cubies, 5 gal. Full Potable Water	20 x 40= 800 lbs
20+0H	0022	Sleeping bags	20 x 5= 100 lbs	1 box	1059	12" Bastard Files	9lbs
20 ea	7443	Cubies, 5 gal Full	20x40= 800 lbs	1 ea	3444	2-cycle mix, chainsaw (6 pk 2.5 oz)	2lbs
18 cases	1842	MRE's	18x20=360 lbs	8 gal	1880	Bar Oil	64 lbs
1 sl	0533	P-Cord	9 lbs	15 gal		Regular Gas	120 lbs
3 cases	0030	AA Batteries, 24 pkg./case	90 lbs	1 can		3 lbs. can coffee	3 lbs
1 case	0021	Trash bags	21 lbs	1 ea		2 1/2 gal coffee pot or 3-1 gal	10 lbs
10 rolls	0142	Toilet paper	3 lbs	2ea	0089	Ridge pole	46 lbs
1 roll	0144	Plastic sheeting	45 lbs	12 ea	0083	Pole upright	89 lbs
2 rolls	0222	Fiber Tape	2 lbs	24 ea	0825	Stake Tent	24 lbs
1 ea	3444	2-cycle mix, chain-saw (6 pk 2.5 oz)	2 lbs				
4 gal	1880	Bar Oil	32 lbs				
15 gal		Regular Gas	120 lbs				
1 box	1059	12" Bastard Files	9 lbs				

# DIVISION PLANNING WORKSHEET

NEXT OPERATIONAL DATE

DIVISION/GROUP

NAME OF DIVISION/GROUP

ROLL OVER ASSIGNED RESOURCES

EXCESS RESOURCES

CORRECTION TO 204

E or C NUMBER	RESOURCE DESIGNATOR	LEADER	NO. PERSONS	COMMENTS

OPERATIONAL PROJECTION (Task, Purpose, End State) 24 hrs

OPERATIONAL PROJECTION (Task, Purpose, End State) 48 hrs

OPERATIONAL PROJECTION (Task, Purpose, End State) 72 hrs

REQUEST FOR ADDITIONAL RESOURCES

NUMBER	TYPE	RESOURCE KIND	DATE NEEDED

**Critical Needs:** If your resource request is critical, describe the mission and the duration resources are needed.

\* *(Faint mirrored text from reverse side of page)*







# MEDICAL PLAN (206 WF)

1. Incident/Project Name				2. Operational Period				
Pioneer Fire				Date/Time: 06/23/24 0600-2200				
3. Ambulance Services								
Name	Complete Address	Phone	Advanced Life Support (ALS)					
Lake Chelan EMS	Chelan, WA	911	Yes	X			No	
4. Air Ambulance Services								
Name	Phone/Channel	Frequency, Type of Aircraft & Capability						
Life Flight- Brewster	1-800-232-0911 911	VMED 29, Rotor, ALS, 24 hr						
Airlift NW- Wenatchee	1-800-426-2430 911	VMED 29, Rotor, ALS, 24 hr						
Wenatchee Short Haul- Chelan Airport	Command 7,8,9,10,11 (Linked)	VMED 29, Rotor, BLS, Daytime, Short Haul						
Snohawk 10- Snohomish	1-800-258-5990 911	VMED 29, Rotor, ALS, Daytime, Hoist						
Spokane County Hoist- Spokane	1-509-532-8930 911	VMED 29, Rotor, ALS, 24 hr, Hoist Daytime Only						
5. Hospitals								
Name	Degrees Decimal Minutes		Travel Time From Fire		Phone	Helipad		Level of Care
			Air	Boat		Yes	No	
Lake Chelan Health 110 S. Apple Blossom Drive Chelan WA	Lat:	47° 50' 20 N	30 Min	3 Hr	509-683-2474	X		Level IV Trauma
	Long:	119° 59' 20 W						
Central Washington Hospital 1201 S. Miller Wenatchee WA	Lat:	47° 24. 43 N	1 Hr	4 Hr	509-433-3115	X		Level II Trauma
	Long:	120° 19. 28 W						
Harborview Medical Center 325 9 <sup>th</sup> Ave. Seattle WA	Lat:	47° 36. 24 N	1.5 Hr	6 Hr	206-744-4025	X		Level I Trauma Burn Center
	Long:	122° 19. 45 W						
ICP	EMS Responders & Capability:			James Brown MEDL/Paramedic		360-775-5413		
	Equipment Available on Scene:			ALS Kit, AED, O2, OTC meds				
	Medical Emergency Channel:			Command 7,8,9,10,11 (Linked)				
	ETA for Ambulance to Scene:							
	Air:			NA				
	Ground:			15 Min				
	Approved Heli-Spot:			NA				
	Lat:			NA				
Long:			NA					
LUCERNE FOB	EMS Responders & Capability:			Ben Meacham MEDL/EMTF		360-921-3817		
				MEDIC 6 Steve Medina (Boat Medical)		360-556-9568		
				EMT 1 Ivan Huld (Boat Medical)		360-888-9880		
	Equipment Available on Scene:			ALS Kit, AED, O2, OTC meds				
	Medical Emergency Channel:			Command 7,8,9,10,11 (Linked)				
	ETA for Ambulance to Scene:							
	Air:			2 hr				
	Water/Ground:			3 hr				
Approved Heli-Spot:								
Lat:			H5 48° 12.1624' N					
Long:			120° 35.4476' W					
BRANCH I	EMS Responders & Capability:			MEDIC 4 Nathan Etherington (DP36)		360-969-1251		
				MEDIC 1 Remington Becker (DP30)		360-903-8612		
				MEDIC 3 Adam Lathrop (DP22)		425-531-0469		
				EMT 2 Aidan Noel (DP22)		206-458-0103		
				EMT 3 James Franklin (DP26)		253-312-1374		
	Equipment Available on Scene:			ALS Kit, Monitor/Defib, O2				
	Medical Emergency Channel:			Command 7,8,9,10 (Linked)				
	ETA for Ambulance to Scene:							
Air:			2 hr					
Water/Ground:			3 hr					
Approved Heli-Spots:								
H1 48° 10.813' N			H11 48° 14.492' N		H15 48° 08.754' N			
120° 31.925' W			120° 35.922' W		120° 29.813' W			
H10 48° 14.099' N			H12 48° 13.381' N		H16 48° 07.744' N			
120° 36.782' W			120° 35.919' W		120° 29.541' W			
BRANCH II	EMS Responders & Capability:			REMS 2 Brayden Kirk + 3 (DIV D)		509-264-8203		
	Equipment Available on Scene:							
	Medical Emergency Channel:			Command 7,8,9,10,11 (Linked)				
	ETA for Ambulance to Scene:							
	Air:			2 hr				
	Ground:			3 hr				
	Approved Heli-Spot:			NA				
	Lat:			NA				
Long:			NA					

## MEDICAL PLAN (206 WF)

<b>BRANCH V</b>	<b>EMS Responders &amp; Capability:</b>	<b>MEDIC 2 Joel Bower (CONTINGENCY)</b> 360-461-7390 <b>MEDIC 5 Brian Linacre (CONTINGENCY)</b> 301-781-7990 <b>REMS 1 Caitlin Lucia +3 (DIV S)</b> 443-699-2512
	Equipment Available on Scene:	ALS Kit, Monitor/Defib, O2, Rescue Gear
	Medical Emergency Channel:	Command 7,8,9,10,11 (Linked)
	ETA for Ambulance to Scene:	
	Air:	2 hr
	Ground:	3 hr
	Approved Heli-Spot:	NA
	Lat:	<b>H25 47° 59.200' N</b>
Long:	<b>120° 16. 521' W</b>	
<b>TBD</b>	<b>EMS Responders &amp; Capability:</b>	TBD
	Equipment Available on Scene:	
	Medical Emergency Channel:	Command 7,8,9,10,11 (Linked)
	ETA for Ambulance to Scene:	
	Air:	2 hr
	Ground:	3 hr
	Approved Heli-Spot:	NA
	Lat:	NA
Long:	NA	
<b>TBD</b>	<b>EMS Responders &amp; Capability:</b>	TBD
	Equipment Available on Scene:	
	Medical Emergency Channel:	Command 7,8,9,10,11 (Linked)
	ETA for Ambulance to Scene:	
	Air:	2 hr
	Ground:	3 hr
	Approved Heli-Spot:	NA
	Lat:	NA
Long:	NA	
<b>TBD</b>	<b>EMS Responders &amp; Capability:</b>	TBD
	Equipment Available on Scene:	
	Medical Emergency Channel:	Command 7,8,9,10,11 (Linked)
	ETA for Ambulance to Scene:	
	Air:	
	Ground:	
	Approved Heli-Spot:	NA
	Lat:	NA
Long:	NA	
<b>TBD</b>	<b>EMS Responders &amp; Capability:</b>	TBD
	Equipment Available on Scene:	
	Medical Emergency Channel:	Command 7,8,9,10,11 (Linked)
	ETA for Ambulance to Scene:	
	Air:	
	Ground:	
	Approved Heli-Spot:	NA
	Lat:	NA
Long:	NA	

Prepared By (Medical Unit Leader)	Date	Reviewed By (Safety Officer)	Date
James Brown MEDL	06/22/24	Ray Hershey SOF2	06/22/24
Signature: <i>James Brown</i>		Signature: <i>Ray Hershey</i>	

# MEDICAL PLAN (ICS 206 WF)

Controlled Unclassified Information//Basic

## Medical Incident Report

**FOR A NON-EMERGENCY INCIDENT, WORK THROUGH CHAIN OF COMMAND TO REPORT AND TRANSPORT INJURED PERSONNEL AS NECESSARY.**

**FOR A MEDICAL EMERGENCY: IDENTIFY ON-SCENE INCIDENT COMMANDER BY NAME AND POSITION AND ANNOUNCE "MEDICAL EMERGENCY" TO INITIATE RESPONSE FROM IMT COMMUNICATIONS/DISPATCH.**

Use the following items to communicate situation to communications/dispatch.

**1. CONTACT COMMUNICATIONS / DISPATCH (Verify correct frequency prior to starting report)**

*Ex: "Communications, Div. Alpha. Stand-by for Emergency Traffic."*

**2. INCIDENT STATUS: Provide incident summary (including number of patients) and command structure.**

*Ex: "Communications, I have a Red priority patient, unconscious, struck by a falling tree. Requesting air ambulance to Forest Road 1 at (Lat./Long.) This will be the Trout Meadow Medical, IC is TFLD Jones. EMT Smith is providing medical care."*

Severity of Emergency / Transport Priority	<input type="checkbox"/> RED / PRIORITY 1 Life or limb threatening injury or illness. Evacuation need is IMMEDIATE <i>Ex: Unconscious, difficulty breathing, bleeding severely, 2° – 3° burns more than 4 palm sizes, heat stroke, disoriented.</i> <input type="checkbox"/> YELLOW / PRIORITY 2 Serious Injury or illness. Evacuation may be DELAYED if necessary. <i>Ex: Significant trauma, unable to walk, 2° – 3° burns not more than 1-3 palm sizes.</i> <input type="checkbox"/> GREEN / PRIORITY 3 Minor Injury or illness. Non-Emergency transport <i>Ex: Sprains, strains, minor heat-related illness.</i>	
Nature of Injury or Illness & Mechanism of Injury		<i>Brief Summary of Injury or Illness (Ex: Unconscious, Struck by Falling Tree)</i>
Evacuation Request		<i>Air Ambulance / Short Haul/Hoist Ground Ambulance / Other</i>
Patient Location		<i>Descriptive Location &amp; Lat. / Long. (WGS84)</i>
Incident Name		<i>Geographic Name + Medical (Ex: Trout Meadow Medical)</i>
On-Scene Incident Commander		<i>Name of on-scene IC of Incident within an Incident (Ex: TFLD Jones)</i>
Patient Care		<i>Name of Care Provider (Ex: EMT Smith)</i>

**3. INITIAL PATIENT ASSESSMENT: Complete this section for each patient as applicable (start with the most severe patient)**

Patient Assessment: See IRPG PAGE 106

Treatment:

**4. EVACUATION PLAN:**

Evacuation Location (if different): (Descriptive Location (drop point, intersection, etc.) or Lat. / Long.) Patient's ETA to Evacuation Location:

Helispot / Extraction Site Size and Hazards:

**5. ADDITIONAL RESOURCES / EQUIPMENT NEEDS:**

*Example: Paramedic/EMT, crews, immobilization devices, AED, oxygen, trauma bag, IV/fluid(s), splints, rope rescue, wheeled litter, HAZMAT, extrication*

**6. COMMUNICATIONS: Identify State Air/Ground EMS Frequencies and Hospital Contacts as applicable**

Function	Channel Name/Number	Receive (RX)	Tone/NAC *	Transmit (TX)	Tone/NAC *
COMMAND					
AIR-TO-GRND					
TACTICAL					

**7. CONTINGENCY: Considerations: If primary options fail, what actions can be implemented in conjunction with primary evacuation method? Be thinking ahead..**

**8. ADDITIONAL INFORMATION: Updates/Changes, etc.**

**REMEMBER:** Confirm ETAs of resources ordered. Act according to your level of training. Be Alert. Keep Calm. Think Clearly. Act Decisively.