

Pioneer Incident Action Plan

Monday June 24, 2024

Morning Radio Briefing: 0700

Operational Period: 0600-2200

WA-SES-000173

USFS PNRZ79 (1522) - DOI RZ79 - DNR 221-LDW

MAPS
IAP
CHECK-IN
DEMOB
AIR TRAVEL REQUEST



Health & Safety Message

Safety Margin

Our operational fire environment is both complex and dynamic.

1. Complex environments are made up of countless conditions such as physical, fuels, weather, topography and the complexity of the fire itself.
2. Personal values, beliefs, biases, experience and emotional state.
3. Dynamic is constantly changing hourly, daily or long term.

Margins acknowledge the complexity and help envision the environment. It is a collective state of the environment and your position in it. Since the fire environment is dynamic, the margin is increasing or decreasing constantly.

Decreasing margins limit the room for error and potential for uncertainty. This limits your options and can reduce the point where unintended or undesired outcomes are inevitable. Increases risk.

Increasing the margin increases the room for errors and uncertainty. More options are available and reduce the chance of unintended outcomes. Limits risk.

You can control the margin by identifying the variables that are assessed within the confines of the margin. You can minimize margins and adverse outcomes by Risk management, LCEs, Fire Orders and Watch out situations.

Make it a Safe Day

Notes

Please Send Photos To
2024.pioneer@firenet.gov

CORRECTED

| | Ground | Air |
|---------|--------|-----|
| FS: | | |
| DNR: | | |
| OSC: | | |
| FS AA: | | |
| DNR AA: | | |

FINANCE MESSAGE

Finance Email: 2024.pioneer.finance@firenet.gov

Finance Phones: *Equipment (208) 891-6877 & TIME (208) 891-8036*

This incident requires electronic documentation. Please email your time to the address above. Scanned PDF's please, no .JPG's. Feel free to call finance for help if needed. Scanners are also available at ICP.

Required Documents

| Overhead, Agency Crews & Cooperators | Contract Resources |
|---|---|
| Finance docs needed: Resource Order, Manifest, Cooperative Agreement, Casual Hire Form w/ECI# (as applicable) | Finance docs needed: Resource Order, Manifest, Full Contract/Agreement, Certifications (<i>if required</i>) Pre-Inspection |
| Daily: CTRs, Shift Tickets | Daily: CTRs, Shift Tickets, receipts (claims, etc.) NOTE: Document travel times and odometer readings |
| Demob: Signed OF-288; Signed OF-286 | Demob: Contractor Evaluations, Shift Tickets, receipt(s) for Addition/Deductions, Post-Inspection, Signed OF-286 |
| <p>"H-Pay"- Entitlement to Hazardous Pay Differential (5 CFR 550.904) – Hazard pay MUST be supported by a justification. If justification is not provided, you chance losing your entitlement.</p> | <p>Please call finance regarding issues with your time:</p> <p>E-104 Havillah Logging E-105 Justin Pitts</p> |

Incident Name: **Pioneer**
 Incident Number: **WA-SES-000173**
 Financial codes:
 WA DNR – **221-LDW**
 DOI – **RZ79**
 USDA – **PNRZ79 (1522)**

Please make sure you check in using QR code on the front of the IAP and then email your time daily.
THANK YOU!!

| CHECK-IN | DEMOB |
|--|---|
| <p>Please complete the virtual check-in process via the QR code on the front cover.</p> <p>You are not checked in until you provide the following:</p> <ul style="list-style-type: none"> • Red Cards • Roster/Manifest <p>Please email documents to: 2024.pioneer.demob@firenet.gov</p> | <p>Fliers complete the "Air Travel Request" via the QR code on the front cover 72 hours prior to flight date.</p> <ul style="list-style-type: none"> • Return supplies to the Cache • Return radios, antennas, etc., to Communications • Contact Finance about closing out your paperwork <p>Once the above items have been completed, SCAN the QR code on the front cover and complete the demob questions.</p> |

If you have any questions about Check-In or DEMOB please email demob at 2024.pioneer.demob@firenet.gov or call 509-661-5372. Please include your request number in the subject line when emailing.

| | | | |
|---|--|---|------------------------|
| INCIDENT OBJECTIVES | 1. Incident Name Pioneer | 2. Date June 23, 2024 | 3. Time 2000 |
| 4. Operational Period: 06/24 0600-2200 | | | |
| 5. General Objectives: Implement suppression strategies and objectives for short/long-term planning. <ul style="list-style-type: none"> • Provide for firefighter and public safety through hazard identification and application of a shared risk management process. • Coordinate public information to provide timely updates to agency partners, cooperators, and the public. • Coordinate suppression activities with READs to identify current and future impacts on the landscape. • Effectively manage and track costs with daily IAP reporting. • Coordinate with agency leadership/administrators to ensure effective and efficient management of firefighting resources. • Identify best course of action for firefighter support, both logistically and operationally. Operational objectives: <ul style="list-style-type: none"> • Implement a point protection strategy to protect private and federal infrastructure. • Triage additional infrastructure within fire planning area to minimize the potential impact to these sites. • Communicate with local law enforcement officials to ensure current and potential evacuations is coordinated. • Evaluate current fire conditions, identify/utilize features that could lead to fire growth, and validate strategic indirect (new/historical) control lines. • Utilize appropriate tactics for current/future fire environment and the predominantly wilderness landscape . • Develop a long-term strategic plan for suppression of the incident. | | | |
| 5a. Incident Requirements <ul style="list-style-type: none"> • Provide Agency Administrator updates and briefings on incident status. • Firefighting operations will implement tactics that offer the highest probability of success to minimize impacts to the landscape and minimize unnecessary exposure to firefighters. • Incident values are firefighter and public safety, critical infrastructure, private land and natural resources. 5b. Leaders Intent <ul style="list-style-type: none"> • Safety: Firefighter, public, boat and aviation safety will be addressed through DRA process. • ISAP: Engage agencies with strategic alignment process, for shared values at risk. • Communication: Keep Agency Administrators and firefighters informed of strategic actions, accomplishments, and challenges. • Operations: Make informed strategic/tactical decisions suppressing the fire in the right geographic locations with the appropriate resources and highest probability of success. • Stakeholders: Collaborate with local partners, officials, and landowners to provide situational updates pertinent to the fire. • Logistics: Provide support ensuring food, water, and shelter for incident responders. • Human Resources: Ensure that all incident personnel are treated with dignity and respect, while having zero tolerance for harassment, alcohol, or illegal drug use. • Public Information: Provide timely and accurate information through media outlets, briefings, and social platforms as needed. • Finance: Monitor and communicate incident cost associated with meeting incident objectives. • Planning: Provide incident documentation, resource tracking, and meeting management. | | | |
| 6. Weather Forecast & General Safety Message for Period – See Attached | | | |
| 7. Attachments (mark if attached) | | | |
| <input checked="" type="checkbox"/> Organization List - ICS 203 | <input checked="" type="checkbox"/> Weather Forecast | <input checked="" type="checkbox"/> Safety Message | |
| <input checked="" type="checkbox"/> Div. Assignment Lists - ICS204 | <input checked="" type="checkbox"/> Fire Behavior Forecast | <input type="checkbox"/> Medical Emergency Com Plan | |
| <input checked="" type="checkbox"/> Communications Plan - ICS 205 | <input checked="" type="checkbox"/> Incident Map | <input type="checkbox"/> | |
| <input checked="" type="checkbox"/> Medical Plan - ICS 206 | <input checked="" type="checkbox"/> Air Operations - ICS 220 | <input type="checkbox"/> | |
| 9. Prepared by Aileen Nichols | 9. Approved by (Incident Commander) <i>Brian Gales</i>  | | |

ICS 202007

| ORGANIZATION ASSIGNMENT LIST | | |
|--|------------------------------------|--|
| 1. Incident Name Pioneer | | |
| 2. Date June 23, 2024 | 3. Time 1830 | |
| 4. Operational Period June 24, 2024 0600-2200 | | |
| Position | Name | |
| CIMTNW13 LWD 6/24/2024 | | |
| 5. Incident Commander and Staff | | |
| Incident Commander | Brian Gales (O-8.1) | |
| Deputy Incident Commander | Eric Riener (O-8.2) | |
| Liaison Officer | Bill Neckels (O-8.3) | |
| ISAP | Robert Burnside (O-14) | |
| Information Officer | Randall Rishe (O-29) | |
| Information Officer | Eric Waters (O-8.5) | |
| Safety Officer | Ray Hershey (O-8.4) | |
| Safety Officer - t | Jeremiah Maghan (O-62) | |
| Human Resources | Margaret Dietrich (O-109) | |
| 6. Agency/Organization Representative(s): | | |
| USFS Oak/Wen Agency Administrator | Kari Grover-Wier | |
| USFS Oak/Wen Agency Administrator - t | Paul Willard | |
| DNR Agency Administrator | Larry Leach | |
| DNR Deputy Agency Administrator | Wyatt Leighton | |
| NPS Agency Administrator | Don Striker | |
| NPS Agency Representative | Ash Rawhouser | |
| NPS FMO | Matt Ellis | |
| USFS LEAD READ | Brigitte Ranne | |
| NPS LEAD READ | Cedar Drake | |
| REAF | Hector Rodriguez | |
| REAF | Eireann Pederson | |
| 7. Planning Section | | |
| Plans Chief | Aileen Nichols (O-8.14) | |
| Resources Unit | Meredith Butcher (O-8.15) | |
| Status Check-In/ Demob Unit | Laura Backlund (O-8.20) | |
| Situation Unit | Laurie Bergvall (O-8.18) | |
| Fire Behavior Analyst | Dean Warner (O-8.19) | |
| Fire Behavior Analyst - Lucerne | Steve Ziel (O-72) | |
| Incident Meteorologist | Trent Smith (O-58) | |
| Documentation Unit - Virtual | Deidre Smith (O-59) | |
| GIS Specialist | Austin Lewandowski (O-60) | |
| GIS Specialist | Josh Serfass (O-100) | |
| Computer Specialist | Dave Johnson (O-8.17) | |
| Air Resource Advisor | Seth Morphsis (O-108) | |
| Strategic Operational Planner | Mark Johnson (O-74) | |
| 8. Logistics Section | | |
| Logistics Chief | Bryan Swanberg (O-8.22) | |
| Deputy Logistics Chief - Lucerne | Cindy Preston (O-8.21) | |
| Deputy Logistics Chief | Dave Willis (O-8.23) | |
| Supply Unit Leader | Jon Byerly (O-8.25) | |
| Ordering Manager | Robert Yarnall (O-8.30) | |
| Communications Unit Ldr | Jarrod Nordloh (O-132) | |
| Incident Comm Mgr | Trina Contreras (O-8.31) | |
| Com Tech | Brian Wolfenburger (O-8.32) | |
| Food Unit Leader | Pat Young (O-8.26) | |
| Facilities Unit Leader | Keith Yonaka (O-8.24) | |
| Medical Unit Leader - ICP | James Brown (O-8.28) | |

| | | |
|--------------------------------------|--|--|
| Medical Unit Leader - Lucerne | Ben Meacham (O-118) | |
| Ground Support Unit | William Braddy (O-8.29) | |
| Receiving/Distribution Mgr - t | Karl Peterson (O-31) | |
| Base Camp Manager | Carl Schilter (O-12) | |
| Security Manager | Chris Dodds (O-11) | |
| Equipment Manager | Charlie Carmichael (O-23) | |
| 9. Operations Section | | |
| Operations (Field) | John Spencer (O-8.6) Whitney Machado - t (O-8.41) | |
| Operations (Planning) | Tom Hall (O-13) | |
| Operations | Brad Reed (O-8.9) | |
| Division Supervisor | H | Rob Poyner (O-135) |
| Group Supervisor | Boat | Charlie Cronk (O-24) |
| a. Branch I | | |
| Branch Director | | Matt James (O-15) |
| Division Supervisor | A | Erik Thorp (O-53) Chris Carr - t (O-54) |
| Division Supervisor | Z | Robert Boles (O-8.13) |
| b. Branch II | | |
| Branch Director | | Thom Taylor (O-150) |
| Division Supervisor | D | Ben Lippert (O-103) Silas Baffa - t (O-107) |
| c. Branch V | | |
| Branch Director | | Spencer Gregory (O-16) |
| Division Supervisor | S | Anna Graves (O-8.10) Holt Jaeger (C-10.1) |
| Group Supervisor | Contingency | Andy Hall (O-106) Aaron Bruning - t (O-69) |
| Staging Manager | Staging | Jon Merager (O-131) |
| d. Air Operations Branch | | |
| Air Operations | Nancy Barker (O-8.8) | |
| Air Support Group | David Moore (O-102) | |
| Helibase Manager | Jerry Rule (O-86) | |
| 10. Finance Section | | |
| Finance Chief | Veronika Klukas (O-8.33) | |
| Deputy Finance Chief | Paula James (O-8.34) | |
| Cost Unit - Virtual | Lori Price (O-8.35) | |
| TIME Unit | Heather Fitzpatrick (O-8.38) | |
| Proc Unit Leader | Eric Soto (O-8.37) | |
| COMPS/CLAIMS | Laurette Gaylord (O-45) | |
| Personnel Time Recorder - t | Jordan Allen-Flowers (O-47) | |
| Incident Cont. Project Insp | Stan Zazado (O-8.39) | |
| In-Box Manager/PTRC | Emily Cohn (O-46) | |
| PREPARED BY: Meredith Butcher | | |



Fire Weather Forecast



FORECAST NO: 12
PREDICTION FOR: 24 Hr Shift
SHIFT DATE: Monday 6/24/2024

INCIDENT: Pioneer Fire

SIGNED: Trent Smith *Trent P. Smith*

TIME AND DATE ISSUED: 6/23/2024 1800 hrs

Incident Meteorologist (IMET)

Discussion: Westerly flow aloft will be over the fire today causing warming and drying. The winds will remain out of the northwest, but significantly lighter compared to yesterday. A ridge builds over the region on Tuesday keeping the warming and drying with southeasterly winds.

WEATHER FORECAST FOR TODAY:

SKY/WEATHER: Mostly Sunny.

MAX TEMPERATURE: 76 to 81.

MIN RH: 20 to 25 percent.

20 FT WINDS:

Lower Valleys: Northwest 5 to 10 mph gusts to 15 mph.

Mid-slopes and Ridges: Northwest 5 to 10 mph gusts to 15 mph.

HAINES INDEX: 3 Very Low: Stability-1 & Moisture-2 **TRANSPORT WINDS:** W 15 mph.

INVERSION: 700 ft inversion starting to lift at 1000 with a max of 4000 ft by 1600.

TONIGHT:

SKY/WEATHER: Mostly Clear.

MIN TEMPERATURE: 53 to 58.

MAX RH: Valley - 61 to 66 percent: Midslope - 50 to 55 percent.

20 FT WINDS:

Valleys/Lower Slopes: Northwest 5 to 10 mph becoming terrain driven 2 to 6 mph after midnight.

Mid-Slopes and Ridges: Northwest 5 to 10 mph becoming terrain driven 3 to 8 mph after midnight.

INVERSION: Developing after 2000 hrs near 500 ft.

TUESDAY:

SKY/WEATHER: Partly Cloudy.

MAX TEMPERATURE: High 82 to 87.

MIN RH: 17 to 22 percent.

20 FT WINDS:

Lower Valleys: Terrain driven 2 to 6 mph becoming southeast 5 to 10 mph in the afternoon.

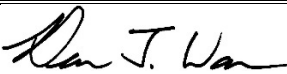
Mid-slopes and Ridges: Terrain driven 3 to 8 mph becoming southeast 5 to 10 mph in the afternoon.

HAINES INDEX: 3 Very Low. **TRANSPORT WINDS:** SE 10 mph.

| Yesterdays observations thru 1700 | Min Temp | Max RH | Max Temp | Min RH | Peak Wind | Precipitation |
|------------------------------------|----------|--------|----------|--------|-----------|---------------|
| Stehekin RAWS (1230') | 59 | 59% | 74 | 25% | 21 mph | 0.00 |
| Lake Chelan Airport (1260') | 66 | 38% | 73 | 20% | 39 mph | N/A |
| Entiat RAWS (2825') | 60 | 45% | 68 | 28% | 55 mph | 0.00 |
| Camp 4 RAWS (3156') | 57 | 51% | 71 | 28% | 32 mph | 0.00 |

Weather observations can be texted to 406-360-6330 or emailed to trent.smith@noaa.gov

Fire Behavior Forecast # 13

| | |
|--|--|
| Name of Incident: Pioneer Fire WA-SES-000173 | Administrative Unit: SE Region DNR / Okanagan-Wenatchee NF |
| Date & Time Issued: 1900 – 6/23/2024 | Operational Period: Day 6/24/2024 |
| FBAN: Dean Warner | Signed:  |

Weather Summary - See attached Pioneer Fire Weather Forecast. Windy today.

Fire Behavior Summary

| General – Spotting potential: 0.4 + mi. Probability of Ignition: 60% Haines Index: 3 (low) LAL: 1 ERC – Y: 44 (79 percentile) | FUEL MODEL | Maximum ROS | Backing ROS | Maximum Flame length | Backing Flame length |
|--|-----------------------------------|------------------------|------------------------|---------------------------------|---------------------------------|
| | GR2 - Moderate load grass shrub | 3 ch/hr | 1 ch/hr | 1 feet | 1 feet |
| | SH2 - Moderate load shrub | 5 ch/hr | 2 ch/hr | 2 feet | 1 feet |
| | TU5 – Very high load timber shrub | 19 ch/hr | 10 ch/hr | 9 feet | 2 feet |
| | TL8 – Long needle timber litter | 19 ch/hr | 6 ch/hr | 5 feet | 1 feet |

GENERAL

Today's warm, dry, and windy conditions will support active fire behavior. A dry cold front will pass through today. Forecasted NW winds today will aid fire progression in the Cascade and upper Meadow Creek drainages. Fire is still pinned between Meadow Creek on the north end; and Prince Creek on the south. To the east, fire continues to make progress up the ridge line of Skookum Puss Mountain. Fire is spreading through backing and flanking aided with rollout and the ever-present Lake winds.

Topography: This fire lies on the north side of Lake Chelan on a dry southwest aspect. The Lake's influence on local winds dominate the fire environment. Natural barriers (rock outcrops and scree slopes) are present in the fire area. When slope reversals occur, a dramatic increase in fire spread will occur, more than you would normally expect. Rolling debris is likely to increase backing rates of spread.

Fuels: The fire is burning in the Rex Creek burn scar (2001). The 23 year old fire scar has left a mosaic of fuels including a moderate load of heavy fuels that are dry enough to sustain fire spread and retain heat. Rock outcrops provide breaks in fuel continuity. Cured dry grass and timber litter with downed dead material are the primary fuels promoting fire spread. There are snags and heavy fuel concentrations scattered throughout the fire area.

ERC: Due to the time of year, Energy Release Component values remain below the 90th percentile. The dry southwest aspect, Lake winds, and steep slopes offer ample opportunity for this fire to outperform typical fire indices.

SPECIFIC

Div A: If the fire crosses to the north side of Meadow Creek, expect a slope reversal that will produce rapid upslope spread with fingering runs in fine fuels. Round Lake saddle may provide localized channeled winds.

Div Z: Expect fire to continue flanking and backing south toward Prince Creek. Monitor for localized erratic winds at Lake Chelan. Winds will favor progression towards Prince Creek. Potential for spotting across Prince Creek is best in the lower reaches near or on the alluvial fan.

Div. H, S, D: Should not be impacted by fire activity today, monitor weather, smoke and radio closely.

Air Ops/Smoke Dispersion

Lake wind may be strong causing turbulence. Smoke from active fire may impact visibility for air operations.

Safety

Risks to fire line personnel increase significantly during transfer of command periods regardless of the size or complexity of the incident. There is a high potential for incidents or injuries. Mitigate the risks by proper implementation of LCES—Lookout, Communications, Escape Routes, and Safety Zones.

| | | | | | | |
|---|---|---|---------------------|---|-------------------------|------------------|
| DIVISION ASSIGNMENT LIST | | | | 1. Branch I | 2. Division A | |
| 3. Incident Name Pioneer | | | | 4. Operational Period Date: 06/24/2024 Time: 0600-2200 | | |
| 5. Operations Personnel | | | | | | |
| Operations Chief | John Spencer Whitney Machado - t | | Branch Director | Matt James | | |
| Safety Officer | Ray Hershey | | Division Supervisor | Eric Thorp Chris Carr - t | | |
| 6. Resources Assigned this Period | | | | | | |
| | Strike Team/Task Force/Resource Designator | Leader | # Persons | LWD | Drop Off PT./Time | Pick Up PT./Time |
| 1 | O-49 TFLD | Jeremy Zemke | 1 | 6/26 | | |
| 2 | O-52 TFLD - t | Dante Ybarra | 1 | 6/26 | | |
| 3 | | | | | | |
| 4 | C-8 CRW1 Union IHC | Eric Jorgenson | 25 | 6/27 | | |
| 5 | C-9 CRW1 Zigzag IHC | Sandra Sperry | 25 | 6/28 | | |
| 6 | O-184 WFM1 Grass Lake | William Johnson | 9 | 7/7 | | |
| 7 | C-13 CRW1 Vale IHC | Glen Heitz | 20 | 7/4 | | |
| 8 | | | | | | |
| 9 | | | | | | |
| 10 | O-67 MEDIC 3 | Adam Lathrop | 1 | 7/4 | | |
| 11 | O-137 EMT 3 | James Franklin | 1 | 7/1 | | |
| 12 | O-153 EMT 2 | Aiden Noel | 1 | 7/1 | | |
| 13 | | | | | | |
| 14 | O-175 SOFR | Melissa Moore | 1 | 7/4 | | |
| 15 | | | | | | |
| 7. Control Operations: | | Meal count | 65 | | | |
| <p>Task: Contain fire spread to the northwest where terrain and fuels allow for highest probability of success. Assess fire perimeter progression to the north and east at higher elevations. Implement point protection efforts on federal & private infrastructure.</p> <p>Purpose: To slow fire progression, provide time for suppression tactics, and prep around critical values.</p> <p>End state: Minimize fire impacts to critical values including private inholdings and Forest Service infrastructure.</p> | | | | | | |
| 8. Special Instructions: | | | | | | |
| <ul style="list-style-type: none"> In large or long term spike camps use helicopters, boats, or pack stock to deliver portable backcountry latrines and remove human waste if necessary. If camp does not have adequate pack, boat, or air support for human waste management, establish community latrines well away from water sources and common areas. Use human waste bags, if necessary. Minimize ground disturbance on the Moore Point and Meadow Creek alluvial fans in order to protect sensitive resources. Ensure hazard mitigations and IWI protocols are in place before taking action. | | | | | | |
| 9. Division/Group Communication Summary | | | | | | |
| See Communications Plan | | | | | | |
| Prepared by (Resource Unit Ldr) <i>Meredith Butcher</i> | | Approved by (Planning Sect. Ch.) <i>Aileen Nichols</i> | | Date 06/23/2024 | Time 2000 | |

| | | | | | | |
|---|--|---|---|-----------------------|---------------------------|---------------------|
| DIVISION ASSIGNMENT LIST | | | 1. Branch I | | 2. Division Z | |
| 3. Incident Name Pioneer | | | 4. Operational Period Date: 06/24/2024 Time: 0600-2200 | | | |
| 5. Operations Personnel | | | | | | |
| Operations Chief | | John Spencer Whitney Machado - t | | Branch Director | | Matt James |
| Safety Officer | | Ray Hershey | | Division Supervisor | | Robert Boles |
| 6. Resources Assigned this Period | | | | | | |
| | Strike Team/Task Force/Resource Designator | Leader | # Persons | LWD | Drop Off PT./Time | Pick Up PT./Time |
| 1 | O-48 TFLD | Jeff Coburn | 1 | 6/26 | | |
| 2 | | | | | | |
| 3 | C-13 CRW1 Vale IHC | Glen Heitz | 20 | 7/4 | | |
| 4 | | | | | | |
| 5 | O-41 WFM1 Eagle Cap | Gabe Hale | 10 | 6/25 | | |
| 6 | | | | | | |
| 7 | A-23 Boise Helitack | Jean Luke Ankney | 3 | 7/6 | | |
| 8 | | | | | | |
| 9 | A-27 UR-31 | Ryan Gregg | 4 | 6/26 | | |
| 10 | | | | | | |
| 11 | O-75 MEDIC 4 | Nathan Etherington | 1 | 6/28 | | |
| 12 | O-51 MEDIC 1 | Remington Becker | 1 | 7/3 | | |
| 13 | | | | | | |
| 14 | O-63 SOF2 | Larry Wright | 1 | 6/24 | | |
| 15 | | | | | | |
| 16 | | | | | | |
| 17 | | | | | | |
| 18 | | | | | | |
| 19 | | | | | | |
| 7. Control Operations: | | | Meal count | 41 | | |
| Task: Contain fire spread to the southwest where terrain and fuels allow for high probability of success. Assess fire perimeter progression to the west/southwest at higher elevations. | | | | | | |
| Purpose: To slow fire progression, provide time for suppression tactics, and prep around critical values. | | | | | | |
| End state: Minimize fire impacts to critical values including private inholdings and Forest Service infrastructure. | | | | | | |
| 8. Special Instructions: | | | | | | |
| <ul style="list-style-type: none"> In large or long term spike camps use helicopters, boats, or pack stock to deliver portable backcountry latrines and remove human waste if necessary. If camp does not have adequate pack, boat, or air support for human waste management, establish community latrines well away from water sources and common areas. Use human waste bags, if necessary. Ensure hazard mitigations and IWI protocols are in place before taking action. | | | | | | |
| 9. Division/Group Communication Summary | | | | | | |
| See Communications Plan | | | | | | |
| Prepared by (Resource Unit Ldr) <i>Meredith Butcher</i> | | | Approved by (Planning Sect. Ch.) <i>Aileen Nichols</i> | | Date 06/23/2024 | Time 2000 |

| eDIVISION ASSIGNMENT LIST | | | | 1. Branch II | | 2. Division D | |
|---|----------------------------------|---|---|---|--------------------------------------|--|---------------------|
| 3. Incident Name Pioneer | | | | 4. Operational Period Date: 06/24/2024 Time: 0600-2200 | | | |
| 5. Operations Personnel | | | | | | | |
| Operations Chief | | John Spencer Whitney Machado - t | | Branch Director | | Thom Taylor | |
| Safety Officer | | Ray Hershey | | Division Supervisor | | Ben Lippert Silas Baffa - t | |
| 6. Resources Assigned this Period | | | | | | | |
| Strike Team/Task Force/Resource Designator | | Leader | # Persons | LWD | Drop Off PT./Time | | Pick Up PT./Time |
| 1 | O-183 TFLD | Harley Hamman | 1 | 7/6 | Stehekin | | Stehekin |
| 2 | O-147 SMOD LNP CREW 76 | Sara Martinez | 7 | 7/3 | Stehekin | | Stehekin |
| 3 | O-148 SMOD HVP CREW 1 | Brent Webb | 10 | 7/3 | Stehekin | | Stehekin |
| 4 | O-218 WFM2 Olympic | Jonah Gray | 10 | 7/6 | Stehekin | | Stehekin |
| 5 | O-184 FELB | Marty Cozart | 1 | 7/6 | Stehekin | | Stehekin |
| 6 | O-186 FMOD Kintner Timber | Cory Kintner | 2 | 7/6 | Stehekin | | Stehekin |
| 7 | O-185 FMOD Brothers Fire | Levi Merritt | 2 | 7/6 | Stehekin | | Stehekin |
| 8 | O-166 REAF | Jordan Spaak | 1 | 7/4 | Stehekin | | Stehekin |
| 9 | O-235 REAF | Cade Simpson | 1 | 7/7 | Stehekin | | Stehekin |
| 10 | O-168 ARCH | Ernest Wingate | 1 | 7/7 | Stehekin | | Stehekin |
| 11 | O-167 ARCH | Jason Wright | 1 | 7/5 | Stehekin | | Stehekin |
| 12 | O-165 REMS 2 | Brayden Kirk | 4 | 7/10 | Stehekin | | Stehekin |
| 13 | ++C-11 CRW1 Redmond IHC | Dave Varon | 20 | 6/28 | Meals Provided out of Lucerne | | |
| 14 | ++O-129 FELB | Mel Tenneson | 1 | 7/1 | Meals Provided out of Lucerne | | |
| 15 | ++O-127 FMOD Rainstorm | Kendall Cain | 2 | 7/1 | Meals Provided out of Lucerne | | |
| 16 | ++O-128 FMOD Rainstorm | Mike Lind | 2 | 7/1 | Meals Provided out of Lucerne | | |
| 17 | ++O-142 SOF2 | Kelly Jensen | 1 | 7/1 | Meals Provided out of Lucerne | | |
| 7. Control Operations: O-170 THSP Tonya Neider 7/4 | | Meal count | 67 | | | | |
| <p>Task: Begin construction of contingency lines around the community of Stehekin. Look for opportunities to contain fire spread in and around Flick Creek area where terrain and fuels allow for highest probability of success.</p> <p>Purpose: Minimize fire impacts to critical values including private inholdings, the community of Stehekin, and Forest Service infrastructure.</p> <p>End state: Critical values including private inholdings, the community of Stehekin, and Forest Service infrastructure are not impacted by the Pioneer fire, while minimizing fire impacts and acres burned utilizing historic wildfire control features and natural barriers.</p> | | | | | | | |
| 8. Special Instructions: | | | | | | | |
| <ul style="list-style-type: none"> In large or long term spike camps use helicopters, boats, or pack stock to deliver portable backcountry latrines and remove human waste if necessary. If camp does not have adequate pack, boat, or air support for human waste management, establish community latrines well away from water sources and common areas. Use human waste bags, if necessary. All operational personnel working on USFS lands will need to conduct a thorough inspection for invasive species seeds on boots including laces, clothing, and gear prior to entering NPS lands. Only fresh (direct from the cache) hose should be utilized on NPS lands to prevent the transport of invasive species seeds. Hose used on USFS lands should not be used on NPS lands and hose used on NPS lands should not be used on USFS lands to prevent the spread of invasives species seeds. Cargo loads being transported onto NPS lands should be inspected for invasive weed seed prior to flight. Ensure hazard mitigations and IWI protocols are in place before taking action. NPS Resource Avoidance Area Flagging is yellow with red polka dots. Contact NPS READs before working in areas where this flagging is present. | | | | | | | |
| 9. Division/Group Communication Summary | | | | | | | |
| See Communications Plan | | | | | | | |
| Prepared by (Resource Unit Ldr) <i>Meredith Butcher</i> | | | Approved by (Planning Sect. Ch.) <i>Aileen Nichols</i> | | | Date 06/23/2024 | Time 2000 |

| | | | | | | |
|---|-----------------------------------|---|-----------|---|-------------------------------|--|
| DIVISION ASSIGNMENT LIST | | | | 1. Branch V | 2. Division S | |
| 3. Incident Name Pioneer | | | | 4. Operational Period Date: 06/24/2024 Time: 0600-2200 | | |
| 5. Operations Personnel | | | | | | |
| Operations Chief | | John Spencer Whitney Machado - t | | Branch Director | | Spencer Gregory |
| Safety Officer | | Ray Hershey | | Division Supervisor | | Anna Graves Holt Jaeger - t |
| 6. Resources Assigned this Period | | | | | | |
| Strike Team/Task Force/Resource Designator | | Leader | # Persons | LWD | Drop Off PT./Time | Pick Up PT./Time |
| 1 | O-112 TFLD | David Ortlund | 1 | 7/1 | Camp 4 Spike | Camp 4 Spike |
| 2 | O-113 TFLD - t | Gavin Young | 1 | 7/1 | Camp 4 Spike | Camp 4 Spike |
| 3 | O-110 TFLD | Shane Clifton | 1 | 6/30 | Camp 4 Spike | Camp 4 Spike |
| 4 | O-111 TFLD - t | Lars Olson | 1 | 6/30 | Camp 4 Spike | Camp 4 Spike |
| 5 | O-115 HEQB | Garrett Hansen | 1 | 6/30 | Camp 4 Spike | Camp 4 Spike |
| 6 | O-117 HEQB - t | Ian Fox | 1 | 6/30 | Camp 4 Spike | Camp 4 Spike |
| 7 | O-130 FELB | Rob Winkler | 1 | 7/2 | Camp 4 Spike | Camp 4 Spike |
| 8 | O-126 FMOD Fire Contracting Serv. | Ethan Wilson | 2 | 7/1 | Camp 4 Spike | Camp 4 Spike |
| 9 | **C-10 CR2I Methow Valley IA | Benjamin Boucher | 23 | 6/29 | Safety Harbor Camp 4 Spike | Safety Harbor Camp 4 Spike |
| 10 | **C-18 CR2I Colville | Jacob Morse | 21 | 7/6 | Camp 4 Spike | Camp 4 Spike |
| 11 | E-73 WTS1 Strand Tenders | Wade Strand | 1 | 6/27 | ICP | ICP |
| 12 | E-78 WTS2 King Hydroseeding | Bill Black | 1 | 7/10 | ICP | ICP |
| 13 | E-92 DZR3 Batchelor Excavation | Jay Batchelor | 2 | 6/28 | Camp 4 Spike | Camp 4 Spike |
| 14 | E-101 SKG2 NW Diesel Dudes | John Lotze | 2 | 7/3 | Camp 4 Spike | Camp 4 Spike |
| 15 | E-102 SKG2 Dukes Equipment | Justin Durston | 2 | 7/1 | ICP | ICP |
| 16 | E-103 MBM2 Marcon Timber | Dave Landes | 2 | 7/1 | ICP | ICP |
| 17 | E-104 MBM2 Havillah Logging | Albert Johnson | 2 | 7/1 | ICP | ICP |
| 18 | E-105 MBM2 Justin Pitts | Justin Pitts | 2 | 7/1 | ICP | ICP |
| 19 | E-69 FTRA Morris Forestry | Jake Wilcox | 2 | 7/7 | ICP | ICP |
| 20 | **E-118 ENG6 Little Pend Oreille | Thomas Boggs | 5 | 7/1 | Camp 4 Spike | Camp 4 Spike |
| 21 | | | | | | |
| 22 | O-43 REMS 1 | Caitlin Lucia | 4 | 6/25 | Camp 4 Spike | Camp 4 Spike |
| 23 | O-141 SOFR | Kevin Pfister | 1 | 7/2 | Camp 4 Spike | Camp 4 Spike |
| 24 | E-18, E-93, E-94 UTV's | | | | | |
| 7. Control Operations: | | Meal count | 79 | | | |
| Task: Implementation of control from South Navaree CG to Lake Chelan. Purpose: To establish a barrier to fire to the east of Safety Harbor Creek. End state: Control line anchored from South Navaree CG to Lake Chelan. | | | | | | |
| 8. Special Instructions: | | | | | | |
| <ul style="list-style-type: none"> Ensure hazard mitigations and IWI protocols are in place before taking action. ** Denotes available for Initial Attack. | | | | | | |
| 9. Division/Group Communication Summary | | | | | | |
| See Communications Plan | | | | | | |
| Prepared by (Resource Unit Ldr) <i>Meredith Butcher</i> | | Approved by (Planning Sect. Ch.) <i>Aileen Nichols</i> | | Date 06/23/2024 | Time 2000 | |

| | | | | | | | |
|--|---|---|---|---|-------------------|--|---------------------|
| DIVISION ASSIGNMENT LIST | | | | 1. Branch V | | 2. Division Contingency | |
| 3. Incident Name Pioneer | | | | 4. Operational Period Date: 06/24/2024 Time: 0600-2200 | | | |
| 5. Operations Personnel | | | | | | | |
| Operations Chief | | John Spencer Whitney Machado - t | | Branch Director | | Spencer Gregory | |
| Safety Officer | | Ray Hershey | | Division Supervisor | | Andy Hall Aaron Bruning - t | |
| 6. Resources Assigned this Period | | | | | | | |
| Strike Team/Task Force/Resource Designator | | Leader | # Persons | LWD | Drop Off PT./Time | | Pick Up PT./Time |
| 1 | O-83 TFLD | Mark Lewis | 1 | 6/29 | ICP | | ICP |
| 2 | O-114 HEQB TFLD-t | TJ Whitehall | 1 | 7/1 | ICP | | ICP |
| 3 | O-116 HEQB - t | Tyler Meyer | 1 | 6/30 | ICP | | ICP |
| 4 | E-74 WTS2 MVP Team | Dale Conrad | 1 | 6/27 | ICP | | ICP |
| 5 | E-75 WTS2 David Rains | Ron Laymance | 1 | 6/30 | ICP | | ICP |
| 6 | E-83 WTS2 King Hydroseeding | Joseph Ivie | 1 | 6/27 | ICP | | ICP |
| 7 | E-76 WTS2 Mountain View Wildfire | Wick Fife | 1 | 7/1 | ICP | | ICP |
| 8 | E-143 EXC2 Delange Enterprises | Pete Delange | 2 | 7/5 | ICP | | ICP |
| 9 | E-71 GRD2 Pettet | Mark Rowe | 2 | 6/27 | ICP | | ICP |
| 10 | E-72 GRD2 Scotts Excavating | Lucas Scott | 2 | 7/7 | ICP | | ICP |
| 11 | E-100 DZR4 Douglas Logging | Steve Douglas | 2 | 7/1 | ICP | | ICP |
| 12 | **E-117 ENG6 Wenatchee River | Nicholas Gonzales | 5 | 7/3 | ICP | | ICP |
| 13 | O-68 MEDIC 2 | Joel Bower | 1 | 7/3 | ICP | | ICP |
| 14 | O-76 MEDIC 5 | Brian Linacre | 1 | 7/7 | ICP | | ICP |
| 15 | | | | | | | |
| 16 | O-85 SOFR | Andy Murrin | 1 | 6/27 | ICP | | ICP |
| 17 | E-19, E-44 UTV's | | | | | | |
| 18 | | | | | | | |
| 19 | | | | | | | |
| 20 | | | | | | | |
| 21 | | | | | | | |
| 7. Control Operations: | | Meal count | 23 | | | | |
| Task: Scout proposed control lines at Oss Peak and Johnson Creek. Assess structures from Deer Point to Mitchel Creek. | | | | | | | |
| Purpose: To protect critical values at risk. | | | | | | | |
| End state: To have established control lines in place that correspond to Pioneer Fire strategic plan. | | | | | | | |
| 8. Special Instructions: | | | | | | | |
| <ul style="list-style-type: none"> Ensure hazard mitigations and IWI protocols are in place before taking action. | | | | | | | |
| ** Denotes available for Initial Attack. | | | | | | | |
| 9. Division/Group Communication Summary | | | | | | | |
| See Communications Plan | | | | | | | |
| Prepared by (Resource Unit Ldr) <i>Meredith Butcher</i> | | | Approved by (Planning Sect. Ch.) <i>Aileen Nichols</i> | | | Date 06/23/2024 | Time 2000 |

| | | | | | | |
|--|--|---|---|-----------------|-------------------------------|------------------------|
| DIVISION ASSIGNMENT LIST | | | 1. Branch V | | 2. Division Staging | |
| 3. Incident Name Pioneer | | | 4. Operational Period Date: 06/24/2024 Time: 0600-2200 | | | |
| 5. Operations Personnel | | | | | | |
| Operations Chief | | John Spencer Whitney Machado - t | | Branch Director | | Spencer Gregory |
| Safety Officer | | Ray Hershey | | Staging Manager | | Jon Merager |
| 6. Resources Assigned this Period | | | | | | |
| Strike Team/Task Force/Resource Designator | | Leader | # Persons | LWD | Drop Off PT./Time | Pick Up PT./Time |
| 1 | | | | | | |
| 2 | | | | | | |
| 3 | | | | | | |
| 4 | | | | | | |
| 5 | | | | | | |
| 6 | | | | | | |
| 7 | | | | | | |
| 8 | | | | | | |
| 9 | | | | | | |
| 10 | | | | | | |
| 11 | | | | | | |
| 12 | | | | | | |
| 13 | | | | | | |
| 14 | | | | | | |
| 15 | | | | | | |
| 16 | | | | | | |
| 17 | | | | | | |
| 18 | | | | | | |
| 19 | | | | | | |
| 20 | | | | | | |
| 21 | | | | | | |
| 7. Control Operations: | | Meal count | | | | |
| Task: Remain ready and available for divisions as needed. | | | | | | |
| Purpose: To assist divisions as needed to complete missions as appropriate. | | | | | | |
| End state: Support suppression efforts as needed to protect communities. | | | | | | |
| 8. Special Instructions: | | | | | | |
| 9. Division/Group Communication Summary | | | | | | |
| See Communications Plan | | | | | | |
| Prepared by (Resource Unit Ldr) <i>Meredith Butcher</i> | | | Approved by (Planning Sect. Ch.) <i>Aileen Nichols</i> | | Date 06/23/2024 | Time 2000 |

| | | | | | | | |
|---|---|---|---|---|-------------------|----------------------------|---------------------|
| DIVISION ASSIGNMENT LIST | | | | 1. Branch | | 2. Division Boat | |
| 3. Incident Name Pioneer | | | | 4. Operational Period Date: 06/24/2024 Time: 0600-2200 | | | |
| 5. Operations Personnel | | | | | | | |
| Operations Chief | | John Spencer Whitney Machado - t | | Branch Director | | | |
| Safety Officer | | Ray Hershey | | Division Supervisor | | Charlie Cronk | |
| 6. Resources Assigned this Period | | | | | | | |
| Strike Team/Task Force/Resource Designator | | Leader | # Persons | LWD | Drop Off PT./Time | | Pick Up PT./Time |
| 1 | O-161 TFLD Boat Coordinator | | Cameron Chambers | 1 | 7/3 | Lucerne | Lucerne |
| 2 | O-50 TFLD | | Todd Olson | 1 | 6/26 | Lucerne | Lucerne |
| 3 | O-160 TFLD | | Brian Turner | 1 | 7/3 | ICP | ICP |
| 4 | O-162 HEQB | | Nicolas Glatt | 1 | 7/3 | ICP | ICP |
| 5 | O-163 HEQB-t | | Emma Ahlrichs | 1 | 7/3 | Lucerne | Lucerne |
| 6 | | | | | | | |
| 7 | E-1 TBOT WA-NCP NPS | | | 1 | | Stehekin | Stehekin |
| 8 | E-3 TBOT Chelan Co. F&R#7 | | | 2 | | DIVS Z | DIVS Z |
| 9 | E-12 TBOT WA-OWF Chelan RD | | | 1 | | 25 Mile | 25 Mile |
| 10 | E-91 TBOT DNR Mud Puppy | | | 1 | | Lucerne | Lucerne |
| 11 | E-98 TBOT Chelan County Sheriffs | | | 1 | | Lucerne | Lucerne |
| 12 | E-43 TBOT Llama Boat | | | 1 | | 25 Mile | 25 Mile |
| 13 | | | | | | | |
| 14 | | | | | | | |
| 15 | O-136 MEDIC 6 | | Steve Medina | 1 | 7/8 | Lucerne | Lucerne |
| 16 | O-152 EMT 1 | | Ivan Huld | 1 | 7/1 | Lucerne | Lucerne |
| 17 | | | | | | | |
| 18 | | | | | | | |
| 19 | | | | | | | |
| 20 | | | | | | | |
| 21 | | | | | | | |
| 7. Control Operations: | | | Meal count | 14 | | | |
| Task: Boats will support firefighters with logistical capability and capacity. | | | | | | | |
| Purpose: Supporting lakeside incident objectives requires firefighter mobility via boats. | | | | | | | |
| End state: Firefighters are supported by boat availability and ready site access. | | | | | | | |
| 8. Special Instructions: | | | | | | | |
| <ul style="list-style-type: none"> In large or long term spike camps use helicopters, boats, or pack stock to deliver portable backcountry latrines and remove human waste if necessary. If camp does not have adequate pack, boat, or air support for human waste management, establish community latrines well aay from water sources and common areas. Use human waste bags, if necessary. Boat Coordinator will be located at Fields Point. Ensure hazard mitigations and IWI protocols are in place before taking action. | | | | | | | |
| 9. Division/Group Communication Summary | | | | | | | |
| See Communications Plan | | | | | | | |
| Prepared by (Resource Unit Ldr) <i>Meredith Butcher</i> | | | Approved by (Planning Sect. Ch.) <i>Aileen Nichols</i> | | | Date 06/23/2024 | Time 2000 |

| | | | | | | |
|---|--|---|---|---------------------|---------------------------|---------------------|
| DIVISION ASSIGNMENT LIST | | | 1. Branch | | 2. Division H | |
| 3. Incident Name Pioneer | | | 4. Operational Period Date: 06/24/2024 Time: 0600-2200 | | | |
| 5. Operations Personnel | | | | | | |
| Operations Chief | | John Spencer Whitney Machado - t | | Branch Director | | |
| Safety Officer | | Ray Hershey | | Division Supervisor | | Rob Poyner |
| 6. Resources Assigned this Period | | | | | | |
| | Strike Team/Task Force/Resource Designator | Leader | # Persons | LWD | Drop Off PT./Time | Pick Up PT./Time |
| 1 | | | | | | |
| 2 | | | | | | |
| 3 | | | | | | |
| 4 | | | | | | |
| 5 | | | | | | |
| 6 | | | | | | |
| 7 | | | | | | |
| 8 | | | | | | |
| 9 | | | | | | |
| 10 | | | | | | |
| 11 | | | | | | |
| 12 | | | | | | |
| 13 | | | | | | |
| 14 | | | | | | |
| 15 | | | | | | |
| 16 | | | | | | |
| 17 | | | | | | |
| 18 | | | | | | |
| 19 | | | | | | |
| 20 | | | | | | |
| 21 | | | | | | |
| 22 | | | | | | |
| 7. Control Operations: | | Meal count | | | | |
| <p>Task: Complete a comprehensive inventory of critical values, proposed control line options to protect those values and the risk to responders associated with those actions in SA4.</p> <p>Purpose: To analyze the strategy as probability vs success.</p> <p>End state: A long term durable strategic plan for the Pioneer Fire.</p> | | | | | | |
| 8. Special Instructions: | | | | | | |
| <ul style="list-style-type: none"> In large or long term spike camps use helicopters, boats, or pack stock to deliver portable backcountry latrines and remove human waste if necessary. If camp does not have adequate pack, boat, or air support for human waste management, establish community latrines well away from water sources and common areas. Use human waste bags, if necessary. Ensure hazard mitigations and IWI protocols are in place before taking action. | | | | | | |
| 9. Division/Group Communication Summary | | | | | | |
| See Communications Plan | | | | | | |
| Prepared by (Resource Unit Ldr) <i>Meredith Butcher</i> | | | Approved by (Planning Sect. Ch.) <i>Aileen Nichols</i> | | Date 06/23/2024 | Time 2000 |

| AIR OPERATIONS SUMMARY ICS-220 | | | | | | | | | | Time Prepared | | Date Prepared | | Prepared By | |
|--|----------|------------|----------|---------|---------|----------------------|-----------------|---------------------------|------------------------|---|-------|--|-----------------------------|--|--|
| Incident Name / Number | | Sunrise | Sunset | Airport | Pumpkin | Shutdown | | Operational Period - Date | | Operational Period - Time | | Nancy Barker/AOBD | | | |
| Pioneer /WA-SES-000173 | | 05:02 | 21:02 | S10 | 21:32 | 21:00 | | 6/24/2024 | | 0600-2200 | | Nancy Barker/AOBD | | | |
| General Remarks, Safety Notes, Hazards, Air Operations Special Equipment, etc. | | | | | | | | | | Helibase Information | | Medivac Ship Information | | | |
| <p>*Order All Aircraft through Command to Helibase.</p> <p>*Sanitize Buckets before changing water sources.</p> <p>*Clear drop area/line before initiating drop sequence.</p> <p>*Be cognizant of all overhead and environmental hazards while working with Aircraft.</p> <p>*All GPS is to be collected in DMM</p> <p>*Aviation daily cost to: 2024.pioneer.finance@firenet.gov</p> <p>*Aviation daily cost to: pioneerhelibase2024@gmail.com</p> | | | | | | | | | | Helibase Information Pioneer/ Helibase Location 47.51.96 N 119.56.56 W Phone (971) 762-8575 | | TFR (A-74) Surface to 10,000' In Effect - 24 Hours Helispots H1 48 10.755N / 120 31.803W H5 48 12.162N / 120 35.447W H10 48 14.050N / 120 36.461W H12 48 13.325N / 120 35.908W H14 (Stehekin AP) 48 20.75N / 120 43.25W H15 48 08.754N / 120 29.813W H25 47 59.212N / 120 16.526W | | Short-Haul Name: N-407RL Phone: (509) 560-9484 Make/Model: 407 Location: 25 Mile/Lake Chelan HB Request Procedure for This Aircraft: Communications on Command, Order through Helibase/CWICC, | |
| Incident Frequencies | RX | Tone | TX | Tone | AM/FM | Position | Name | Phone | EQUIPMENT/SUPPLIES | | | | | | |
| Air to Air Primary (A-8) | 123.4000 | | 123.4000 | | AM | AOBD | Nancy Barker | (253) 312-4301 | Com Trailer E-20 | | | | | | |
| Air to Air Secondary (A-9) | 118.2750 | | 118.2750 | | AM | ASGS | Dave Moore | (513) 616-9192 | Hand Wash Station E-47 | | | | | | |
| A/G Pri Tactical (A-10) | 169.1500 | | 169.1500 | | FM | ASGS-T | Ben Thayer | (208) 830-1636 | Water Tender E-77 | | | | | | |
| A/G Sec Operational (A-11) | 168.4000 | | 168.4000 | | FM | HEBM-T | Ben Wagner | (206) 473-2165 | Water Tender E-14 | | | | | | |
| A/G 3 Logs (A-47) | 166.6125 | | 166.6125 | | FM | HEBM | Jerry Rule | (253) 548-7711 | | | | | | | |
| | | | | | FM | HLCO | Jerry Messinger | (541) 306-0907 | | | | | | | |
| DECK | 163.1000 | | 163.1000 | | FM | HLCO-T | Chad Bergren | (541) 219-2594 | | | | | | | |
| COMMAND | | | | | | UAS | Callan Wilkins | (509) 899-3876 | | | | | | | |
| | | | | | | | Ryan Gregg | (360) 852-2296 | | | | | | | |
| | | | | | | | | | | | | | | | |
| | | | | | | | | | | | | | | | |
| | | | | | | | | | | | | | | | |
| AIR GUARD | 168.6250 | | 168.6250 | 110.9 | FM | CWICC | Aircraft Desk | (509) 884-3473 x2 | | | | | | | |
| VMED 29 | 155.3475 | 156.7 | 155.3475 | 156.7 | FM | UAS | Cory Dolberry | (509) 668-2801 | | | | | | | |
| HELICOPTERS - Assigned | | | | | | | | | | HELICOPTERS - GACC Prepo | | | | | |
| FAA # | TYPE | Make/Model | Helibase | Start | Avail | Remarks | FAA # | TYPE | Make/Model | Airport | Start | Avail | Remarks | | |
| HB-16FH (A-22) | 1 | UH-60 | Chelan | 0800 | 0900 | BKT/LL | H-205TK | 2 | Bell 205A | Chelan | 0800 | 0900 | Rapps | | |
| HB-17FH (A-23) | 1 | UH-60A | Chelan | 0800 | 0900 | BKT/LL | | | | | | | | | |
| HB-161KA (A-24) | 1 | K-1200 | Chelan | 0800 | 0900 | BKT/LL | | | | | | | | | |
| HB-344RA (A-45) | 1 | CH-47D | Chelan | 0800 | 0900 | BKT/LL | | | | | | | | | |
| H-304HA (A-31) | 2 | Bell 205A | Chelan | 0800 | 0900 | BKT/LL | | | | | | | | | |
| H-407RL (A-1) | 3 | 407 | Chelan | 0800 | 0900 | Wenatchee Short-haul | | | | | | | | | |
| H-684H (A-46) | 3 | 407 | Chelan | 0800 | 0900 | BKT/LL/Recon/HLCO | | | | | | | | | |
| H-544AS (A-60) | 3 | AS350B3 | Chelan | 0800 | 0900 | HLCO/Recon | | | | | | | | | |
| UAS | | | | | | | | | | FIXED WING AA/HLCO | | | | | |
| Call Sign | Type | Make/Model | Base | Start | Avail | Remarks | FAA # | Call Sign | Make/Model | Base | Start | Avail | Remarks | | |
| UR-31 | 3 | AltaX | Lucerne | 0600 | 2200 | IR/PSD | N-586DV (A-42) | 610 | Commander | WEN | 0900 | 1000 | Assigned ATGS | | |
| | | | | | | | H-544AS (A-60) | 4AS | AS350B3 | Chelan | 0800 | 0900 | Assigned HLCO | | |
| | | | | | | | N-197GB | 617 | Commander | Chelan | 0900 | 1000 | Wenatchee IA (not assigned) | | |

INCIDENT RADIO COMMUNICATIONS PLAN (ICS 205)

Controlled Unclassified Information//Basic

| 1. Incident Name: | | 2. Date/Time Prepared: | | 3. Operational Period: | | | | | | |
|--|------|---------------------------------|----------------------------|--|----------|-------------|----------|-------------|-------------------|----------------------------|
| PIONEER | | Date: 06/23/2024 Time: 16:40 | | Date/Time From: 06/24/2024 0600 Date/Time To: 06/25/2024 0600 | | | | | | |
| 4. Basic Radio Channel Use: | | | | | | | | | | |
| Zone Group | Ch # | Function | Channel Name/Trunked Radio | Assignment | RX Freq | RX Tone/NAC | TX Freq | TX Tone/NAC | Mode (A, D, or M) | Remarks |
| | 1 | TACTICAL | TAC 1 | DIV A | 168.0500 | 123.0 | 168.0500 | 123.0 | A | |
| | 2 | TACTICAL | TAC 2 | DIV D & S | 168.2000 | 123.0 | 168.2000 | 123.0 | A | |
| | 3 | TACTICAL | TAC 3 | DIV Z | 168.6000 | 123.0 | 168.6000 | 123.0 | A | |
| | 4 | TACTICAL | TAC 4 | DIV H | 166.7250 | 123.0 | 166.7250 | 123.0 | A | |
| | 5 | TACTICAL | TAC 5 | CONTINGENCY | 166.7750 | 123.0 | 166.7750 | 123.0 | A | |
| | 6 | TACTICAL | TAC 6 | BOAT | 168.2500 | 123.0 | 168.2500 | 123.0 | A | |
| | 7 | COMMAND | CMD 7 | ALL | 168.4750 | 123.0 | 165.4000 | 123.0 | A | CHELAN BUTTE |
| | 8 | COMMAND | CMD 8 | ALL | 169.5375 | 123.0 | 164.7125 | 123.0 | A | OLD MAID MT |
| | 9 | COMMAND | CMD 9 | ALL | 170.4500 | 123.0 | 168.1000 | 123.0 | A | MOORE MT |
| | 10 | COMMAND | CMD 10 | ALL | 170.0125 | 123.0 | 165.2500 | 123.0 | A | SLIDE RIDGE |
| | 11 | COMMAND | CMD 11 | ALL | 170.4125 | 123.0 | 165.9625 | 123.0 | A | FOX MT |
| | 12 | TACTICAL | A/G PRI | ALL DIVS | 169.1500 | 000.0 | 169.1500 | 000.0 | A | |
| | 13 | AIR TO GROUND | A/G SEC | ALL DIVS | 168.4000 | 000.0 | 168.4000 | 000.0 | A | |
| | 14 | AIR TO GROUND | A/G 3 | ALL DIVS | 166.6125 | 000.0 | 166.6125 | 000.0 | A | TAKE OFF LANDING CHANNEL |
| | 15 | AIR TO GROUND | V/MED 29 | ALL DIVS | 155.3475 | 156.7 | 155.3475 | 156.7 | A | AIR EMS COORDINATION |
| | 16 | AIR TO GROUND | AIRGUARD | ALL DIVS | 168.6250 | 000.0 | 168.6250 | 110.9 | A | EMERGENCY AIRCRAFT CONTACT |
| 5. Special Instructions: 24 hour staffing: PIONEER COMMUNICATIONS PHONE NUMBER: (208) 891-7870 / CURRENT CLONE "PIE 6-21" | | | | | | | | | | |
| 6. Prepared By COML | | | | | | | | | | |
| Name: Jarrod Nordloh | | | | | | | | | | |
| Signature: s/ Jarrod Nordloh | | | | | | | | | | |
| ICS 205 | | | | | | | | | | |
| IAP Page | | | | | | | | | | |
| Date/Time: 6/23/2024 21:54 | | | | | | | | | | |



OKANOGAN-WENATCHEE NATIONAL FOREST

Resource Guidelines for Fire Suppression

Fire: Pioneer

Location: Pioneer Creek, North shore of Lake Chelan

Date: 6/18/2024

Resource Advisors

Lead READ: Brigitte Ranne 509-663-6118, brigitte.ranne@usda.gov

REAF: Hector Rodriguez 509-393-5379, Hector.Rodriguez3@usda.gov

REAF: Eireann Pederson 360-854-8197, eireann.pederson@usda.gov

HUMAN SAFETY IS THE HIGHEST PRIORITY FOR EVERY EMERGENCY RESPONSE ACTION

MIST for Spike Camp and Lucerne Forward Operating Base Management

- Employ minimum impact suppression tactics (MIST) where feasible, especially in remote or sensitive areas.
- If spike camps are necessary, use existing, or previously impacted campsites where available. If existing campsites are not available; use your local resource advisor to help identify the most resilient sites in rocky or sandy soils. Avoid camping in wet meadows, along streams, or on lake shores.
- Store food properly so that it is not accessible to wildlife. Consider hanging food in trees at least 15 feet off the ground and 5 feet from the trunk of the tree, or store food in sealable containers. Store food away from the campsite (300 feet is ideal) to reduce the risk of human and bear (and rodent!) conflicts.
- Do not let garbage and food scraps accumulate in camp. All garbage and food scraps need to be removed from the camp ASAP and before leaving the site.
- Minimize disturbance to land in preparing bedding and campfire sites. Do not clear vegetation, trench, or excavate a flat spot to create bedding sites.
- Do not use nails in trees. Don't construct camp furniture.
- If a campfire is built for warmth in the evening, build either a pit or mound fire. Use dead and down firewood. Use small diameter wood that burns down more cleanly. Don't burn plastics or aluminum - pack it out with the rest of the camp garbage.



- In small spike camp situations (not Lucerne), individuals should use the "cat-hole" method of disposing of human waste. Toilet seats should be located a minimum of 200 feet from water sources. Holes should be dug 6-8 inches deep.

In large or long term spike the camps use helicopters, boats, or pack stock to deliver portable backcountry latrines and remove human waste if necessary. If the camp does not have adequate pack, boat, or air support for human waste management, establish community latrines well away from water sources and common areas. Use human waste bags, if necessary.

Dipping and Drafting

- No cross-dipping between water bodies. All buckets or snorkels should be cleaned, inspected, and dried in the sun if they must be used between lakes. Dipping in small lakes must be pre-approved by the READ or AA.
- When drafting, use already disturbed areas for stream access (road crossings, dispersed campsites) to reduce the need for riparian vegetation clearing.
- Use screens (3/32" inch) for all pumping operations.
- Use containment pads and basins under pumps and fuel cans. Ensure a spill kit is present with every operating pump.

Invasive Species

- The fire is burning within an infestation of common crupina, a WA State Class A Noxious weed. Prevent spread of crupina off site – plan to wash hose and other equipment. Request fire fighters brush boots before boarding boat or **before entering National Park Service Land**.
- Inspect slings and remove all plant/soil material prior to use.
- Ensure all camps, staging areas, helispots and cargo areas are free of invasive plants to prevent spread to un-infested areas.
- Weed wash all vehicles when they arrive to the incident and when demobed.

Fisheries /Aquatic Recommendations

- If trees must be felled in riparian areas for suppression or safety reasons, fell them toward streams where possible and minimize bucking where possible.
- Non-mechanized suppression activities are recommended within Riparian Reserves (150-300 ft from stream channel). For example, consider hand lines instead of dozer lines when feasible.

Retardant Use

- Retardant avoidance areas are present in the fire suppression area for both aquatic and terrestrial species.
- Track all retardant drops – locations and amounts.
- Report all mis-applications ASAP to READ. Monitoring and reporting of misapplications is required.

Wet Meadows

- No line or other disturbance in wet meadows in the Summer Blossom area (east of South Navarre campground above and below the 8200 road) and at Coyote and Poison Springs at the headwaters of their respective creeks.

Dry Meadows

- Minimize disturbance from staging and parking areas in dry meadows. These areas recovery slowly and are vulnerable to invasive plant infestation.

White Bark Pine

- Avoid cutting white bark pine whenever possible. Needles of 5 keep it alive! Ask READ for help with ID.

Burnout operations

- Plan to protect whitebark pine of all ages and mature cold and moist forest during burnouts. READ consultation and line officer approval is required for burn plans that include these forest types.
- During burnouts modify firing to retain large trees, large snags and large down wood in forests whenever possible.
- Minimize total acres burned in burnouts.
- Incorporate typical resource protection measures used in RX burning whenever it is safe and practical to do so (such as retention of green islands in moist areas).
- Provide a map of areas that were burned as part of the burnout operation (for use in emergency consultation).

Cultural Resources

- If cultural resources are discovered during suppression activities, leave on site and notify READ.



Human Resource Message



Pioneer Fire June 24, 2024

Thank You

We're demobing and going home tomorrow. CIMT-NW13 would like to thank each of you for the professional and competent manner in which you approached your fire assignment.

You were proactive at maintaining good work relationships and creating a harassment-free work environment. Due to your efforts, personnel-related issues on this incident have been minimal.

Thank you for a job well done. Our team looks forward to working with you again on future fire assignments.

I can do things you cannot, you can do things I cannot: together we can do great things.- *Mother Teresa* -

Margaret Dietrich, Human Resource Specialist, CIMT-NW13

LOGISTICS HOURS

Shower: 0500 - 1200 & 1400 - 2200

Supply: 0600 - 2200

Ground Support: 0500 - 2200

Fuel Tender: 0700 - 2100

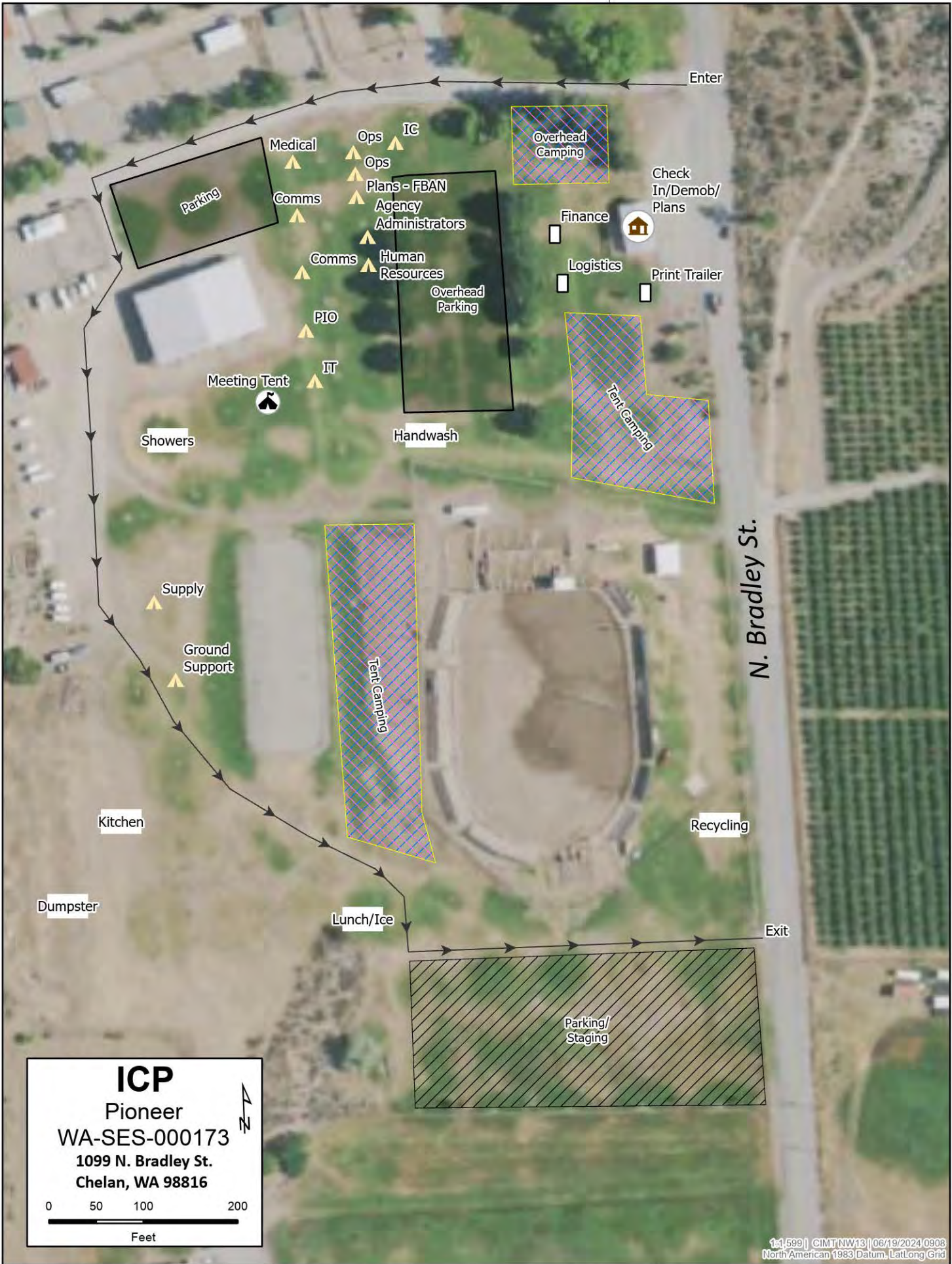
Kitchen:

Breakfast: 0530 - 0900

Dinner: 1800 - 2100

PIONEER CONTACT LIST

| | |
|----------------------------|---|
| Public Information: | 509-210-2926 |
| Communications: | 208-891-7870 |
| Check In/Demob: | 509-661-5372 |
| Medical: | 360-775-5413 |
| Supply: | 360-827-5382 |
| Ground Support: | 425-274-6215 |
| Finance: | Equipment 208-891-6877 & TIME 208-891-8036 |



ICP
 Pioneer
 WA-SES-000173
 1099 N. Bradley St.
 Chelan, WA 98816

0 50 100 200
 Feet

▲ N



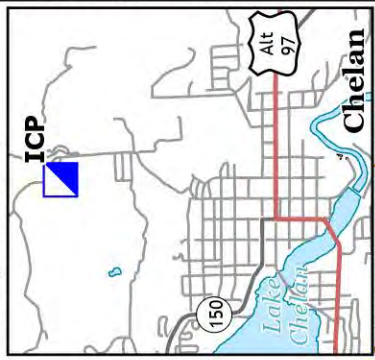
Pioneer

WA-SES-000173

06/24/2024 16hr

4530 acres on 6/23/2024 @ 1029

ICP: Chelan Rodeo Grounds
1099 N Bradley St.
Chelan, WA 98816

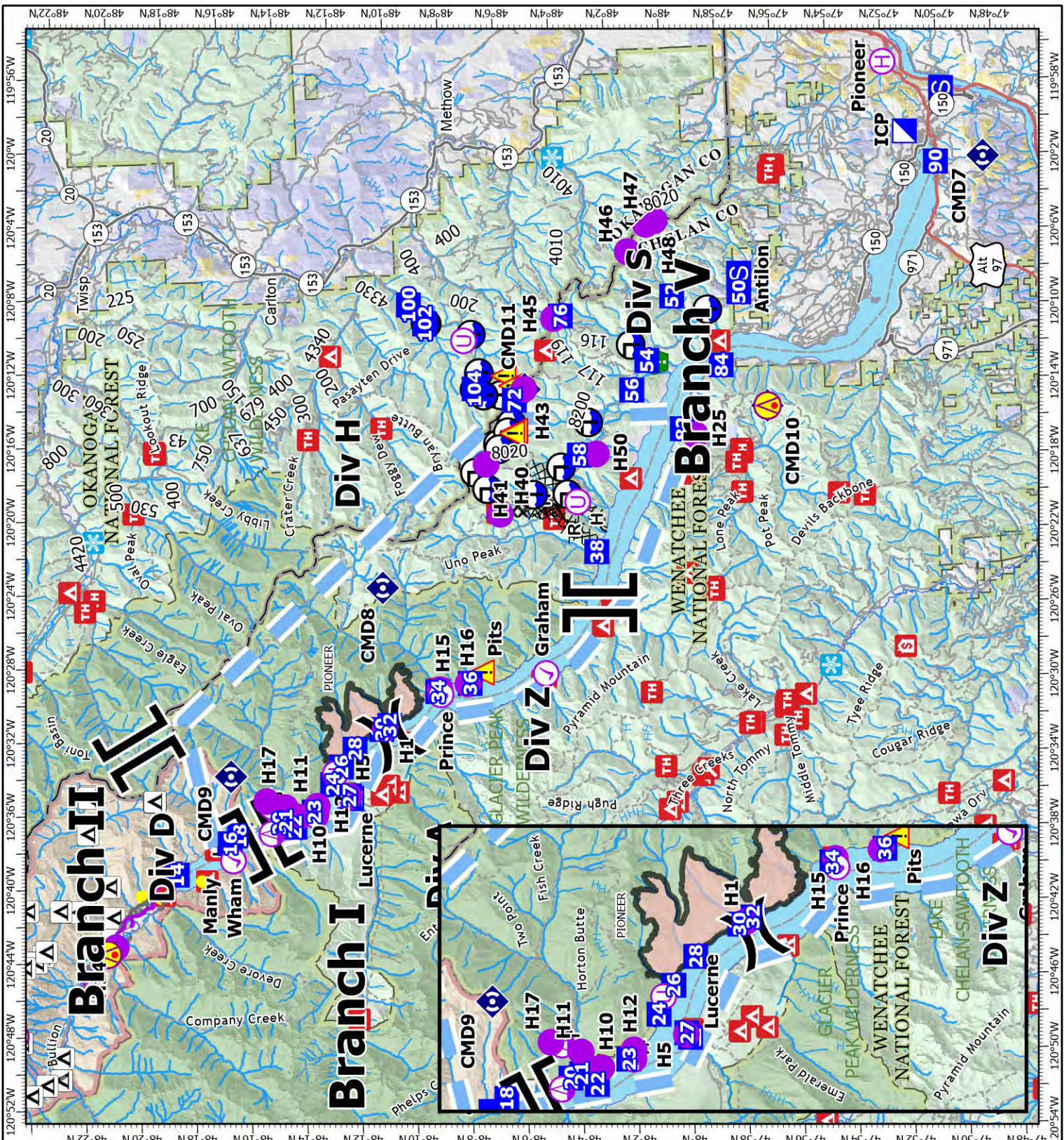


- Aerial Hazard
- Aviation Check Point
- Helibase
- Sling Site
- Unimproved Landing Area
- Division Break
- Incident Command Post
- Drop Point
- Camp
- Staging Area
- Resource Location
- Repeater
- Hazard
- Draft Site
- Completed Dozer Line
- Completed Fuel Break
- Completed Hand Line
- Completed Mixed Construction Line
- Completed Road as Line
- Highlighted Feature
- Other
- Aerial Hazard
- Temporary Flight Restriction
- Wildfire Daily Fire Perimeter

1,355,106 | CMNT NW113 | 06/23/2024 2107
Acres from ICP
North American 1983 Datum, LantLong Grid

Miles

SCAN ME



NW IMT13
Line Supply Order

Revised 04/03/2019

| Date & Time Order was Placed | Order # (BR+DIVS + #) | Location & Time for Delivery (Division/LZ/DP/Lat Long) | Mode of delivery (Driven/Helo/DIVS to Pick up) |
|------------------------------|--------------------------|---|---|
| | | | |

Person placing order (name & time):

Order received in Communications by (name & time):

Order received in Transportation by (name & time):

Order received in Helibase by (name & time):

Order shipped to line unit by (name & time): (Send this sheet to the line with the order)

| # | Item | Amount | | Item | Amount |
|-----|---------------------------------|--------|-----|--|--------|
| 1. | Meals, Breakfasts | ea | 31. | Slingable Blivet, specify size – 72 or 55 gl | ea |
| 2. | Meals, Lunches | ea | 32. | Folding Tank, specify size | ea |
| 3. | Meals, Dinners | ea | 33. | Lightweight Pump Kit | ea |
| 4. | Meals, MRE's | cs | 34. | Hose, 1 1/2" | ea |
| 5. | Water, 5 gal. cubie | ea | 35. | Hose, 1" | ea |
| 6. | Batteries- AA | 1-Flat | 36. | Hose, 3/4" | ea |
| 7. | Batteries, Specify Type | pk | 37. | Reducer, 1 1/2" x 1" | ea |
| 8. | Flagging, Specify type | roll | 38. | Reducer, 1" x 3/4" | ea |
| 9. | Gas, raw | gal | 39. | Gated "Y", 1 1/2" | ea |
| 10. | Bar Oil | gal | 40. | Gated "Y", 1" | ea |
| 11. | 2- cycle oil, chainsaw (2.5 oz) | 6 pk | 41. | Gated "Y", 3/4" | ea |
| 12. | Sleeping Bags | ea | 42. | Shut-off Valve, specify size | ea |
| 13. | Gatorade | cs | 43. | In-line Tee, 1 1/2" x 1" | ea |
| 14. | Tarps / Plastic | roll | 44. | Nozzle, 1 1/2" | ea |
| 15. | Parachute Cord | roll | 45. | Nozzle, 1" | ea |
| 16. | Tool, Shovel | ea | 46. | Nozzle, 3/4" | ea |
| 17. | Tool, Pulaski | ea | 47. | 20-25 Person First Aid Kit | ea |
| 18. | Tool, Combi | ea | 48. | Chainsaw Kit | ea |
| 19. | Tool, McLeod | ea | 49. | Toilet Paper (96 per case) | cs |
| 20. | Tool, Specify Type | ea | 50. | 1000 ft. Hose Lay Kit | ea |
| 21. | Fusee | cs | 51. | Garbage Bags | bx |
| 22. | Drip Torch | ea | 52. | Leadline | ea |
| 23. | Drip Torch Mix, 5 gal. | ea | 53. | Spike Supply Kit | ea |
| 24. | Coffee Kit w/propane | ea | 54. | Dolmar (6 per case) | ea |
| 25. | Swivel | ea | 55. | Sprinkler Kit | ea |
| 26. | Backpack Pump | ea | 56. | LINE Spike Supply Kit | ea |
| 27. | Pumpkin, specify size | ea | 57. | Duct Tape | roll |
| 28. | Mark 3 Pump | ea | 58. | House Wrap | roll |
| 29. | Mark 3 Pump Accessory Kit | ea | 59. | Staple Gun w/staples | ea |
| 30. | 2-cycle oil, high pressure pump | qt | | | |

Team Ordering/Timeline Process:

1100 - Last call to change spike camp resource hot food location.
 1600 - DIVS to have next day's resource order ready for Planning OPS.

- All orders will be placed through DIVS or Branch.
- DIVS or Branch will place all orders through Communications Unit.
- All orders will be tracked using the process found on the front of this form.

| 1000 ft. Hose Lay Kit (Order as "#50") | | | | Spike Supply Kit (Order as "#53") | | | |
|---|--------------|--------------------------------------|-----------------|--------------------------------------|-------|-------------------------------------|------------------|
| Quantity | NFES# | Item | Weight | Quantity | NFES# | Item | Weight |
| 10 ea | 1239 | Hose 1½" | 125 lbs | 2 rolls | 0071 | Duct Tape | 4 lbs |
| 10 ea | 1238 | Hose 1" | 84 lbs | 4 rolls | 0222 | Fiber Tape | 2lbs |
| 20 ea | 1016 | Hose ¾" | 25 lbs | 1 case | 0021 | Trash Bags | 21 lbs |
| 5 ea | 0231 | 1½" Gated "Y" | 20 lbs | 1 case | 0465 | Cups for hot liquid | 18 lbs |
| 5 ea | 0259 | 1" Gated "Y" | 13 lbs | 2 ea | 0070 | 16x24 Tent fly | 40 lbs |
| 10 ea | 0904 | ¾" Gated "Y" | 3 lbs | 3 ea | 0027 | Water Wash Basins | 2 lbs |
| 5 ea | 0010 | Reducers 1½" - 1" | 3 lbs | 1 case | | Liquid Hand Soap / pump | 10 lbs |
| 5 ea | 0733 | Reducers 1" - ¾" | 2 lbs | 18 cases | 1842 | MRE's | 18 x 20= 360 lbs |
| 10 ea | 0738 or 0835 | Ball Valve ¾" | 5 lbs | 48 ea | 0022 | Sleeping bags (dbl. bag) | 48 x 5= 240 lbs |
| 10 ea | 0138 | Nozzle, 1" | 5 lbs | 3 cases | 0030 | AA Batteries, 24 pkg./case | 90 lbs |
| 10 ea | 0136 | Nozzle ¾" | 5 lbs | 1 case | 0240 | Paper Towels | 41 lbs |
| 5 ea | 0230 | Tee 1½x1½x1"/valve | 5 lbs | 1 case | 0142 | Toilet Paper | 44 lbs |
| LINE Spike Supply Kit (Order as "#56") | | | | 1 roll | 0144 | Plastic sheeting | 45 lbs |
| | | | | 1 roll | 0533 | P-Cord | 9 lbs |
| Quantity | NFES# | Item | Weight | 20 ea | 7443 | Cubies, 5 gal. Full Potable Water | 20 x 40= 800 lbs |
| 20+0H | 0022 | Sleeping bags | 20 x 5= 100 lbs | 1 box | 1059 | 12" Bastard Files | 9lbs |
| 20 ea | 7443 | Cubies, 5 gal Full | 20x40= 800 lbs | 1 ea | 3444 | 2-cycle mix, chainsaw (6 pk 2.5 oz) | 2lbs |
| 18 cases | 1842 | MRE's | 18x20=360 lbs | 8 gal | 1880 | Bar Oil | 64 lbs |
| 1 sl | 0533 | P-Cord | 9 lbs | 15 gal | | Regular Gas | 120 lbs |
| 3 cases | 0030 | AA Batteries, 24 pkg./case | 90 lbs | 1 can | | 3 lbs. can coffee | 3 lbs |
| 1 case | 0021 | Trash bags | 21 lbs | 1 ea | | 2 1/2 gal coffee pot or 3-1 gal | 10 lbs |
| 10 rolls | 0142 | Toilet paper | 3 lbs | 2ea | 0089 | Ridge pole | 46 lbs |
| 1 roll | 0144 | Plastic sheeting | 45 lbs | 12 ea | 0083 | Pole upright | 89 lbs |
| 2 rolls | 0222 | Fiber Tape | 2 lbs | 24 ea | 0825 | Stake Tent | 24 lbs |
| 1 ea | 3444 | 2-cycle mix, chain-saw (6 pk 2.5 oz) | 2 lbs | | | | |
| 4 gal | 1880 | Bar Oil | 32 lbs | | | | |
| 15 gal | | Regular Gas | 120 lbs | | | | |
| 1 box | 1059 | 12" Bastard Files | 9 lbs | | | | |

DIVISION PLANNING WORKSHEET

NEXT OPERATIONAL DATE

DIVISION/GROUP

NAME OF DIVISION/GROUP

___ ROLL OVER ASSIGNED RESOURCES

___ EXCESS RESOURCES

___ CORRECTION TO 204

E or C
NUMBER

RESOURCE DESIGNATOR

LEADER

NO.
PERSONS

COMMENTS

OPERATIONAL PROJECTION (Task, Purpose, End State) 24 hrs

OPERATIONAL PROJECTION (Task, Purpose, End State) 48 hrs

OPERATIONAL PROJECTION (Task, Purpose, End State) 72 hrs

___ REQUEST FOR ADDITIONAL RESOURCES

NUMBER

TYPE

RESOURCE KIND

DATE NEEDED

Critical Needs: If your resource request is critical, describe the mission and the duration resources are needed.

*

Boat Schedules

| | | | | | |
|---|----------------------------|----------------------------|----------------------------|----------------------------|-----------------------------|
| Contact Phone number | 509-682-4584 | 509-682-4584 | 509-682-4584 | 509-682-4584 | 509-669-5045 |
| Days | Lady of the Lake (S) | Lady Express (M) | Lady Liberty (F) | Lady Liberty (F) | Stehekin Ferry |
| | Departs from DP90 Chelan | Departs from DP90 Chelan | Departs from DP90 Chelan | Departs from DP90 Chelan | Departs from DP 14 Stehekin |
| 20-Jun | available | available | (Dual trip day) | (single trip day) | available |
| 21 | available | available | available | available | available |
| 22 | available | available | available | available | available |
| 23 | available | available | available | available | available |
| 24 | available | available | available | available | available |
| 25 | available | available | available | available | available |
| 26 | available | available | available | available | available |
| 27 | available | available | available | available | available |
| 28 | available | available | available | available | available |
| 29 | available | available | available | available | available |
| 30 | available | available | available | available | available |
| 1-Jul | | | | | available |
| 2 | | | | | available |
| 3 | | | | | available |
| 4 | | | | | available |
| 5 | | | | | available |
| | Schedule | Schedule | Schedule | Schedule | Schedule |
| | Chelan DP90 0830 Depart | Chelan DP90 0830 Depart | Chelan DP90 0800 Depart | Chelan DP90 0800 Depart | Stehekin DP90 1040 Depart |
| | Fields Pt DP84 0945 | Fields Pt DP84 0920 | Fields Pt DP84 0815 ** | Fields Pt DP84 0815 ** | Fish Crk DP21 1100** |
| | Prince Crk DP34 1100 ** | Prince Crk DP34 1000 ** | Lucerne DP27 0900 ** | Lucerne DP27 0900 ** | Swartz Dk DP23 1105** |
| | Lucerne DP27 1145 | Lucerne DP27 1040 | Stehekin DP14 0930 Arrival | Stehekin DP14 0930 Arrival | Lucerne DP27 1110 |
| | Moore pt DP22 1215 ** | Stehekin DP14 1100 Arrival | 1 hour layover | 6 hour layover | Prince crk DP36 1135 |
| | Stehekin DP14 1230 Arrival | 1.5 hour layover | Stehekin DP14 1030 Depart | Stehekin DP14 1530 Depart | Fields Lndg DP84 1300 |
| | 1 hour layover | Stehekin DP14 1230 Depart | Lucerne DP27 1100 ** | Lucerne DP27 1600 ** | Prince crk DP36 1350 |
| | Stehekin DP14 1400 Depart | Lucerne DP27 1250 | Fields Pt DP84 1145 ** | Fields Pt DP84 1645 ** | Lucerne DP27 1420 |
| | Moore pt DP22 1415 ** | Prince Crk DP34 1520 ** | Chelan DP90 1200 Arrival | Chelan DP90 1700 Arrival | Stehekin DP90 1425 arrival |
| | Lucerne DP27 1445 | Fields Pt DP84 1410 | 1 hour layover | | |
| | Prince Crk DP34 1515 ** | Chelan DP90 1500 Arrival | Chelan DP90 1300 Depart | | |
| | Fields Pt DP84 1645 | Chelan DP90 1645 | Fields Pt DP84 1315 ** | | |
| | Chelan DP90 1800 Arrival | | Lucerne DP27 1400 ** | | |
| | | | Stehekin DP14 1430 Arrival | | |
| | | | 1 hour layover | | |
| | | | Stehekin DP14 1530 Depart | | |
| | | | Lucerne DP27 1600 ** | | |
| | | | Fields Pt DP84 1645 ** | | |
| | | | Chelan DP90 1700 Arrival | | |
| | | | | | |
| | | | | | |
| ** request only | | | | | Different Company |
| Schedule boats early, space is limited. | | | | | |
| Give alternate time and/or dates incase boats are overbooked. | | | | | |

ACTIVITY LOG (ICS 214)

| | | |
|------------------------------------|--|-----------------------------------|
| 1. Incident Name: | 2. Operational Period: Date From: _____ Date To: _____ Time From: _____ Time To: _____ | |
| 3. Name: | 4. ICS Position: | 5. Home Agency (and Unit): |
| 6. Resources Assigned: | | |
| Name | ICS Position | Home Agency (and Unit) |
| | | |
| | | |
| | | |
| | | |
| | | |
| | | |
| | | |
| | | |
| 7. Activity Log: | | |
| Date/Time | Notable Activities | |
| | | |
| | | |
| | | |
| | | |
| | | |
| | | |
| | | |
| | | |
| | | |
| | | |
| | | |
| | | |
| | | |
| | | |
| | | |
| | | |
| | | |
| | | |
| | | |
| | | |
| | | |
| | | |
| | | |
| | | |
| 8. Prepared by: Name: _____ | Position/Title: _____ | Signature: _____ |
| ICS 214, Page 1 | Date/Time: _____ | |

MEDICAL PLAN (206 WF)

| 1. Incident/Project Name | | | | 2. Operational Period | | | | | | | | | |
|---|--|---|---------------|--|-----------|--|--------------|-------------------|-------------------------------|-----------------|--|--|--|
| Pioneer Fire | | | | Date/Time: 06/24/24 0600-2200 | | | | | | | | | |
| 3. Ambulance Services | | | | | | | | | | | | | |
| Name | | Complete Address | | Phone | | Advanced Life Support (ALS) Yes No | | | | | | | |
| Lake Chelan EMS | | Chelan, WA | | 911 | | X | | | | | | | |
| 4. Air Ambulance Services | | | | | | | | | | | | | |
| Name | | Phone/Channel | | Frequency, Type of Aircraft & Capability | | | | | | | | | |
| Life Flight- Brewster | | 1-800-232-0911 911 | | VMED 29, Rotor, ALS, 24 hr | | | | | | | | | |
| Airlift NW- Wenatchee | | 1-800-426-2430 911 | | VMED 29, Rotor, ALS, 24 hr | | | | | | | | | |
| Wenatchee Short Haul- Chelan Airport | | Command 7,8,9,10,11 (Linked) | | VMED 29, Rotor, BLS, Daytime, Short Haul | | | | | | | | | |
| Snohawk 10- Snohomish | | 1-800-258-5990 911 | | VMED 29, Rotor, ALS, Daytime, Hoist | | | | | | | | | |
| Spokane County Hoist- Spokane | | 1-509-532-8930 911 | | VMED 29, Rotor, ALS, 24 hr, Hoist Daytime Only | | | | | | | | | |
| 5. Hospitals | | | | | | | | | | | | | |
| Name | | Degrees Decimal Minutes | | Travel Time From Fire Air Boat | | Phone | | Helipad Yes No | | Level of Care | | | |
| Lake Chelan Health 110 S. Apple Blossom Drive Chelan WA | | Lat: | 47° 50' 20 N | | 30 Min | 3 Hr | 509-683-2474 | | X | Level IV Trauma | | | |
| | | Long: | 119° 59' 20 W | | | | | | | | | | |
| Central Washington Hospital 1201 S. Miller Wenatchee WA | | Lat: | 47° 24. 43 N | | 1 Hr | 4 Hr | 509-433-3115 | X | Level II Trauma | | | | |
| | | Long: | 120° 19. 28 W | | | | | | | | | | |
| Harborview Medical Center 325 9 th Ave. Seattle WA | | Lat: | 47° 36. 24 N | | 1.5 Hr | 6 Hr | 206-744-4025 | X | Level I Trauma Burn Center | | | | |
| | | Long: | 122° 19. 45 W | | | | | | | | | | |
| ICP | | EMS Responders & Capability: | | | | James Brown MEDL/Paramedic | | 360-775-5413 | | | | | |
| | | Equipment Available on Scene: | | | | ALS Kit, AED, O2, OTC meds | | | | | | | |
| | | Medical Emergency Channel: | | | | Command 7,8,9,10,11 (Linked) | | | | | | | |
| | | ETA for Ambulance to Scene: | | | | | | | | | | | |
| | | Air: | | | | NA | | | | | | | |
| | | Ground: | | | | 15 Min | | | | | | | |
| | | Approved Heli-Spot: | | | | NA | | | | | | | |
| | | Lat: | | | | NA | | | | | | | |
| Long: | | | | NA | | | | | | | | | |
| LUCERNE FOB | | EMS Responders & Capability: | | | | Ben Meacham MEDL/EMTF | | 360-921-3817 | | | | | |
| | | | | | | MEDIC 6 Steve Medina (Boat Medical) | | 360-556-9568 | | | | | |
| | | | | | | EMT 1 Ivan Huld (Boat Medical) | | 360-888-9880 | | | | | |
| | | Equipment Available on Scene: | | | | ALS Kit, AED, O2, OTC meds | | | | | | | |
| | | Medical Emergency Channel: | | | | Command 7,8,9,10,11 (Linked) | | | | | | | |
| | | ETA for Ambulance to Scene: | | | | | | | | | | | |
| | | Air: | | | | 2 hr | | | | | | | |
| | | Water/Ground: | | | | 3 hr | | | | | | | |
| | | Approved Heli-Spot: | | | | | | | | | | | |
| | | Lat: | | | | H5 48° 12.1624' N | | | | | | | |
| Long: | | | | 120° 35.4476' W | | | | | | | | | |
| BRANCH I | | EMS Responders & Capability: | | | | MEDIC 4 Nathan Etherington (DP 36) | | 360-969-1251 | | | | | |
| | | | | | | MEDIC 1 Remington Becker (DP 30) | | 360-903-8612 | | | | | |
| | | | | | | MEDIC 3 Adam Lathrop (DP 22) | | 425-531-0469 | | | | | |
| | | | | | | EMT 2 Aidan Noel (DP 22) | | 206-458-0103 | | | | | |
| | | | | | | EMT 3 James Franklin (DP 26) | | 253-312-1374 | | | | | |
| | | Equipment Available on Scene: | | | | ALS Kit, Monitor/Defib, O2 | | | | | | | |
| | | Medical Emergency Channel: | | | | Command 7,8,9,10 (Linked) | | | | | | | |
| | | ETA for Ambulance to Scene: | | | | | | | | | | | |
| | | Air: | | | | 2 hr | | | | | | | |
| | | Water/Ground: | | | | 3 hr | | | | | | | |
| Approved Heli-Spots: | | | | | | | | | | | | | |
| H1 48° 10.813' N | | | | H11 48° 14.492' N | | H15 48° 08.754' N | | | | | | | |
| 120° 31.925' W | | | | 120° 35.922' W | | 120° 29.813' W | | | | | | | |
| H10 48° 14.099' N | | | | H12 48° 13.381' N | | H16 48° 07.744' N | | | | | | | |
| 120° 36.782' W | | | | 120° 35.919' W | | 120° 29.541' W | | | | | | | |
| BRANCH II | | EMS Responders & Capability: | | | | REMS 2 Brayden Kirk + 3 (DIV D) | | 509-264-8203 | | | | | |
| | | Equipment Available on Scene: | | | | | | | | | | | |
| | | Medical Emergency Channel: | | | | Command 7,8,9,10,11 (Linked) | | | | | | | |
| | | ETA for Ambulance to Scene: | | | | | | | | | | | |
| | | Air: | | | | 2 hr | | | | | | | |
| | | Ground: | | | | 3 hr | | | | | | | |
| | | Approved Heli-Spot: | | | | NA | | | | | | | |
| | | Lat: | | | | NA | | | | | | | |
| Long: | | | | NA | | | | | | | | | |

MEDICAL PLAN (206 WF)

| | | |
|-----------------|---|--|
| BRANCH V | EMS Responders & Capability: | MEDIC 2 Joel Bower (CONTINGENCY) 360-461-7390 MEDIC 5 Brian Linacre (CONTINGENCY) 301-781-7990 REMS 1 Caitlin Lucia +3 (DIV S) 443-699-2512 |
| | Equipment Available on Scene: | ALS Kit, Monitor/Defib, O2, Rescue Gear |
| | Medical Emergency Channel: | Command 7,8,9,10,11 (Linked) |
| | ETA for Ambulance to Scene: | |
| | Air: | 2 hr |
| | Ground: | 3 hr |
| | Approved Heli-Spot: | NA |
| | Lat: | H25 47° 59.200' N |
| Long: | 120° 16. 521' W | |
| TBD | EMS Responders & Capability: | TBD |
| | Equipment Available on Scene: | |
| | Medical Emergency Channel: | Command 7,8,9,10,11 (Linked) |
| | ETA for Ambulance to Scene: | |
| | Air: | 2 hr |
| | Ground: | 3 hr |
| | Approved Heli-Spot: | NA |
| | Lat: | NA |
| Long: | NA | |
| TBD | EMS Responders & Capability: | TBD |
| | Equipment Available on Scene: | |
| | Medical Emergency Channel: | Command 7,8,9,10,11 (Linked) |
| | ETA for Ambulance to Scene: | |
| | Air: | 2 hr |
| | Ground: | 3 hr |
| | Approved Heli-Spot: | NA |
| | Lat: | NA |
| Long: | NA | |
| TBD | EMS Responders & Capability: | TBD |
| | Equipment Available on Scene: | |
| | Medical Emergency Channel: | Command 7,8,9,10,11 (Linked) |
| | ETA for Ambulance to Scene: | |
| | Air: | |
| | Ground: | |
| | Approved Heli-Spot: | NA |
| | Lat: | NA |
| Long: | NA | |
| TBD | EMS Responders & Capability: | TBD |
| | Equipment Available on Scene: | |
| | Medical Emergency Channel: | Command 7,8,9,10,11 (Linked) |
| | ETA for Ambulance to Scene: | |
| | Air: | |
| | Ground: | |
| | Approved Heli-Spot: | NA |
| | Lat: | NA |
| Long: | NA | |

| Prepared By (Medical Unit Leader) | Date | Reviewed By (Safety Officer) | Date |
|-----------------------------------|----------|-------------------------------|----------|
| James Brown MEDL | 06/23/24 | Ray Hershey SOF2 | 06/23/24 |
| Signature: <i>James Brown</i> | | Signature: <i>Ray Hershey</i> | |

MEDICAL PLAN (ICS 206 WF)

Controlled Unclassified Information//Basic

Medical Incident Report

FOR A NON-EMERGENCY INCIDENT, WORK THROUGH CHAIN OF COMMAND TO REPORT AND TRANSPORT INJURED PERSONNEL AS NECESSARY.

FOR A MEDICAL EMERGENCY: IDENTIFY ON-SCENE INCIDENT COMMANDER BY NAME AND POSITION AND ANNOUNCE "MEDICAL EMERGENCY" TO INITIATE RESPONSE FROM IMT COMMUNICATIONS/DISPATCH.

Use the following items to communicate situation to communications/dispatch.

1. CONTACT COMMUNICATIONS / DISPATCH (Verify correct frequency prior to starting report)

Ex: "Communications, Div. Alpha. Stand-by for Emergency Traffic."

2. INCIDENT STATUS: Provide incident summary (including number of patients) and command structure.

Ex: "Communications, I have a Red priority patient, unconscious, struck by a falling tree. Requesting air ambulance to Forest Road 1 at (Lat./Long.) This will be the Trout Meadow Medical, IC is TFLD Jones. EMT Smith is providing medical care."

| | | |
|---|---|---|
| Severity of Emergency / Transport Priority | <input type="checkbox"/> RED / PRIORITY 1 Life or limb threatening injury or illness. Evacuation need is IMMEDIATE <i>Ex: Unconscious, difficulty breathing, bleeding severely, 2° – 3° burns more than 4 palm sizes, heat stroke, disoriented.</i> <input type="checkbox"/> YELLOW / PRIORITY 2 Serious Injury or illness. Evacuation may be DELAYED if necessary. <i>Ex: Significant trauma, unable to walk, 2° – 3° burns not more than 1-3 palm sizes.</i> <input type="checkbox"/> GREEN / PRIORITY 3 Minor Injury or illness. Non-Emergency transport <i>Ex: Sprains, strains, minor heat-related illness.</i> | |
| Nature of Injury or Illness & Mechanism of Injury | | <i>Brief Summary of Injury or Illness (Ex: Unconscious, Struck by Falling Tree)</i> |
| Evacuation Request | | <i>Air Ambulance / Short Haul/Hoist Ground Ambulance / Other</i> |
| Patient Location | | <i>Descriptive Location & Lat. / Long. (WGS84)</i> |
| Incident Name | | <i>Geographic Name + Medical (Ex: Trout Meadow Medical)</i> |
| On-Scene Incident Commander | | <i>Name of on-scene IC of Incident within an Incident (Ex: TFLD Jones)</i> |
| Patient Care | | <i>Name of Care Provider (Ex: EMT Smith)</i> |

3. INITIAL PATIENT ASSESSMENT: Complete this section for each patient as applicable (start with the most severe patient)

Patient Assessment: See IRPG PAGE 106

Treatment:

4. EVACUATION PLAN:

Evacuation Location (if different): (Descriptive Location (drop point, intersection, etc.) or Lat. / Long.) Patient's ETA to Evacuation Location:

Helispot / Extraction Site Size and Hazards:

5. ADDITIONAL RESOURCES / EQUIPMENT NEEDS:

Example: Paramedic/EMT, crews, immobilization devices, AED, oxygen, trauma bag, IV/fluid(s), splints, rope rescue, wheeled litter, HAZMAT, extrication

6. COMMUNICATIONS: Identify State Air/Ground EMS Frequencies and Hospital Contacts as applicable

| Function | Channel Name/Number | Receive (RX) | Tone/NAC * | Transmit (TX) | Tone/NAC * |
|-------------|---------------------|--------------|------------|---------------|------------|
| COMMAND | | | | | |
| AIR-TO-GRND | | | | | |
| TACTICAL | | | | | |

7. CONTINGENCY: Considerations: If primary options fail, what actions can be implemented in conjunction with primary evacuation method? Be thinking ahead..

8. ADDITIONAL INFORMATION: Updates/Changes, etc.

REMEMBER: Confirm ETAs of resources ordered. Act according to your level of training. Be Alert. Keep Calm. Think Clearly. Act Decisively.