

TUESDAY



JUNE 25, 2024

OPERATION PERIOD

Day: 0700 - 2100

COMMUNICATIONS 24-HOUR
EMERGENCY NUMBER

(208) 891-7948

PIONEER CHARGE CODES

USFS: PN RZ79 (1522)

DOI: RZ79

WA DNR: 221-LDW



Maps, IAP,
Finance / Eval.

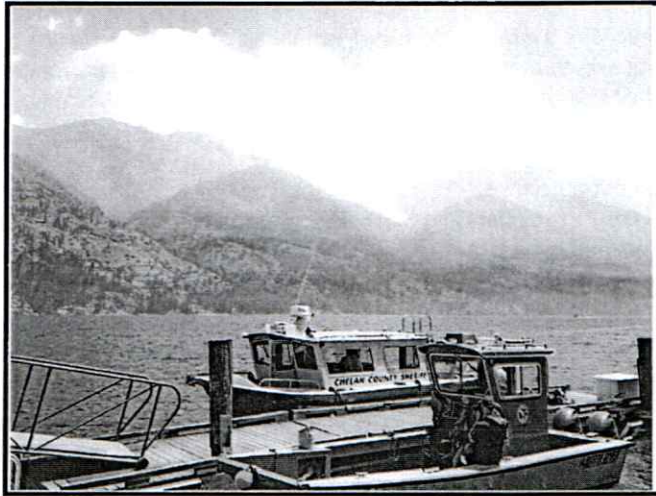


PIONEER

INCIDENT ACTION PLAN

Pioneer

WA-SES-000173



Notes

Corrected

	Ground	Air
FS:		
DNR:		
OSC:		
FSAA:		
DNR AA:		

INCIDENT OBJECTIVES	1. Incident Name PIONEER	2. Date Prepared 06/24/2024	3. Time 1900
----------------------------	------------------------------------	---------------------------------------	------------------------

4. Operational Period
Day Operations: 0700-2100

Strategic Framework:

The Pioneer Fire is a full suppression fire utilizing strategies and tactics that provide the highest likelihood of success while mitigating risks to the responders and public. Extreme terrain prevents direct attack. Indirect lines are being identified and established that reduces risk to responders while protecting identified values including private and federal infrastructure and recreational values.

Management Objectives:

- Ensure the safety and well being of responders and the public by making timely risk-informed decisions that align with values at risk.
- Protect private and federal infrastructure and recreational values.
- Foster relationships with local cooperators and the public by providing coordinated, accurate and timely information.
- Coordinate suppression activities with READ's to identify and mitigate current and future impacts to the landscape and resources.
- Treat each other with dignity and respect and act in a professional manner on the fire and in the communities.
- Manage cost commensurate with values at risk by coordinating with the Agency Administrators and Incident Business Advisors.

Operational Objectives:

- Implement an effective suppression strategy utilizing direct attack where and when appropriate to protect values at risk. When fire behavior, terrain, or safety concerns prohibit direct attack, utilize other suppression tactics such as indirect and point protection as appropriate to reduce risk to responders. Take advantage of natural features such as breaks in fuels, topographic features, or changes in weather.
- Establish indirect control lines with the highest probability of success which prevent fire spread into populated areas.
- Communicate with local law enforcement officials to ensure current and potential evacuations are coordinated.

6. Weather Forecast for Period

7. General Safety Message

8. Attachments (mark if attached)

X	Organization List - ICS 203	X	Medical 206WF - 8 Line	X	Finance Message
X	Div. Assignment Lists - ICS 204	X	Safety Message	X	Dutch Creek Protocol
X	Communications Plan - ICS 205		LCES - ICS 215A	X	Phone List
X	Medical Plan - ICS 206	X	Weather Forecast	X	Incident Map(s)
X	Air Operation Summary - ICS 220	X	Fire Behavior	X	Unit Log

Prepared by Planning Section Chief
Mike Crawford

Approved by Incident Commander
Nathan Letwice

ORGANIZATION ASSIGNMENT LIST	
1. Incident Name PIONEER	
2. Date Prepared JUNE 24, 2024	3. Time Prepared 1800
4. Operational Period JUNE 25, 2024 0700 – 2100	
5. Incident Commander and Staff	
Position	Name
Incident Commander	Nate Lefevre
Deputy	Chris Orr
Safety Officer	Matt Broyles / Jeremiah Maghan (T)
Information Officer	Liv Stecker
Liaison	Shawn Christianson / Greg Brody / Mark Suba / Rhonda Marchand (T)
Human Resources	Margaret Dietrich
6. Agency Representatives	
Agency	Name
USFS Oak/Wen Agency Admin	Kari Grover-Wier
USFS Oak/Wen Agency Admin (T)	Pual Willard
DNR Agency Administrator	Larry Leach
DNR Deputy Agency Administrator	Wyatt Leighton
NPS Agency Administrator	Don Striker
NPS Agency Representative	Ash Rawhouser
NPS FMO	Matt Ellis
USFS Lead READ	Brigitte Ranne
NPS Lead READ	Cedar Drake
REAF	Hector Rodriguez
REAF	Eireann Pederson
7. Planning Section	
Plans Section Chief	Mike Crawford
Deputy	Debbie Plummer (T)
Resource Unit	Gary Duranceau/ Cari Richardson
Status Check-in	Katelyn Roeder / Charlie Hardy
Situation Unit	Shannon Theall / Ray Moeckel (T)
Demob Unit	Jay Lord
Documentation Unit	Chris Oelschlager
Incident Meteorologist	Trent Smith
Fire Behavior Analyst	Steve Ziel
Long Term Fire Analyst	Brett Smith (Virtual)
8. Logistics Section	
Logistics Section Chief	Franklin Vaughan
Deputy	Max Yager / Cindy Wedekind

Facilities	Jan Robbins / Kelsy Lipp / Peter Drott (T) / Mike Prevost (T) / Randy Rector (T)
Base Camp Manager	Dave Lefevre/Mac McEntyre (T)
Supply Unit	Vicki Cunningham
IT Specialist	Mike Gascon / Chad Funnemark / Ben Smith (T)
Receiving Distribution	Michael Hanson / Karl Peterson (T)
Ordering Manager	Kerry Johnston (T)
Ground Support Unit	Casey Glade / Joe Keady
Communication Unit	Seth Baumgartner / Michael Merrick (T)
Communication Tech.	Keith Schaff / Kevin Judd
Food Unit	Kristy Naughton/John Cody/Phil Moller/Shawna Monroe (T)
Security Manager	Michael Fakier
Medical Unit	Mariann Turley / James Brown / Kevin Smith (T) / Ben Meacham
9. Operations Section	
OPS Section Chief - Lead	Jon Larson / Jesse Kiene (T)
OPS Section Chief - Planning	Rob Poyner (T)
OPS Section Chief – Field	Seth Merritt
a. Branch I	
Branch Director	Thom Taylor
Division A	Seth Missal / James Fields (T)
Division Z	Travis Baker/Frank Heilman (T)
b. Branch II	
Branch Director	Thom Taylor
Division D	Ben Lippert / Silas Baffa (T)
c. Branch V	
Branch Director	Alfred Wiehl
Division S	Linda Gibson / Holt Jaeger (T)
Division H	
Division Contingency / Roads	Jennifer Harris/Eric Metzger (T)
Division Boat	Nate Crawford
Division Staging	Jon Merager
d. Air Operations Branch	
AOB Director – Planning	Mark Hocken
AOB Director – Field	Ted Hass
10. Finance Section	
Finance Section Chief	Patty Westgate / Lori Bailey (T)
Time Unit	Beverly Hollars / Heather Wall
Procurement	Audrey Mainwaring
Comp/Claims	Kelly Lorenz (Virtual)
Cost Unit	Mike Lysne (Virtual)
Prepared by Cari Richardson, RESL	



Fire Weather Forecast



FORECAST NO: 13
PREDICTION FOR: 24 Hr Shift
SHIFT DATE: Tuesday 6/25/2024
TIME AND DATE ISSUED: 6/24/2024 1800 hrs

INCIDENT: Pioneer Fire
SIGNED: Trent Smith *Trent R. Smith*
 Incident Meteorologist (IMET)

Discussion: A ridge of high pressure will be over the fire today causing warm and dry conditions. The winds will be terrain driven and in the afternoon become southeasterly. A cold front is expected to move through the fire location on Wednesday afternoon. This front will bring southwest then northwest winds Wednesday afternoon along with the potential of showers and thunderstorms.

WEATHER FORECAST FOR TODAY:

SKY/WEATHER: Mostly Sunny.

MAX TEMPERATURE: 82 to 87.

MIN RH: 18 to 23 percent.

20 FT WINDS:

Lower Valleys: Terrain driven 2 to 6 mph becoming southeast 5 to 10 mph in the afternoon.

Mid-slopes and Ridges: Terrain driven 3 to 8 mph becoming southeast 5 to 10 mph gusts to 15 mph in the afternoon.

HAINES INDEX: 4 Low: Stability-2 & Moisture-2

TRANSPORT WINDS: SE 10 mph.

INVERSION: 500 ft inversion starting to lift at 0900 with a max of 7000 ft by 1600.

TONIGHT:

SKY/WEATHER: Mostly clear becoming mostly cloudy after midnight.

MIN TEMPERATURE: 59 to 64.

MAX RH: Valley - 55 to 60 percent: Midslope - 45 to 50 percent.

20 FT Wind

Valleys/Lower Slopes: Southeast 5 to 10 mph becoming terrain driven 2 to 6 mph after midnight.

Mid-Slopes and Ridges: Southeast 5 to 10 mph becoming terrain driven 3 to 8 mph after midnight.

INVERSION: Developing after 2100 hrs near 500 ft.

WEDNESDAY:

SKY/WEATHER: Mostly cloudy, 35% chance of showers and thunderstorms in the afternoon.

MAX TEMPERATURE: High 77 to 82.

MIN RH: 30 to 35 percent.

20 FT WINDS:

Lower Valleys: Terrain driven 2 to 6 mph becoming Northwest 5 to 10 mph gusts to 20 mph by late afternoon.

Mid-slopes and Ridges: Terrain driven 3 to 8 mph becoming southwest 5 to 10 mph gusts to 20 mph late morning then switching to the northwest 8 to 13 mph gusts to 30 mph by late afternoon.

HAINES INDEX: 3 Very Low.

TRANSPORT WINDS: W 15 mph.

Yesterdays observations thru 1700	Min Temp	Max RH	Max Temp	Min RH	Peak Wind	Precipitation
Stehekin RAWS (1230')	54	60%	81	24%	19 mph	0.00
Lake Chelan Airport (1260')	N/A	N/A	N/A	N/A	N/A	N/A
Entiat RAWS (2825')	52	52%	78	21%	42 mph	0.00
Camp 4 RAWS (3156')	47	59%	77	23%	18 mph	0.00

Weather observations can be texted to 406-360-6330 or emailed to trent.smith@noaa.gov

Fire Behavior Forecast # 14

Name of Incident:

Pioneer

Administrative Unit:

SE Region DNR / Okanogan-Wenatchee NF

Date & Time Issued: June 24, 2024 @ 2000

Operational Period: DAY 06/25/2024

FBAN: Steve Ziel

Signed: /z/

Assumptions: Return to SE winds, with warming and drying. Current fuel conditions will support active fire spread with winds/slope alignment. Potential fire behavior is being inhibited by fuel condition and discontinuity. Expect favorable burning conditions between 1300-1700. Persistent burning conditions and retention of heat in heavy fuels may be expected. Live fuels are not contributing to fire spread (yet). Lake effect winds (up or downlake) dominate lower and mid slopes; the fire areas is on a SW aspect with steep side drainages that provide upslope winds. Wind/slope alignment and/or lake wind will influence fire spread.

Weather Summary

*See attached Fire Weather Forecast

Fire Behavior Summary

Fuels in the fire area are composed of a mosaic of *Timber Litter, Grass, Timber with Understory, and Grass/Shrub* models. The fire is burning in the Rex Creek (2001) fire footprint. Primary tree species include mixed sizes and densities of Douglas Fir and Ponderosa Pine. Local timber litter is compact to fluffy. Brush and understory species include ceanothus, hardwoods, and dog-hair conifer reproduction. Large snags and heavy downed fuel loadings are common throughout all areas. Live woody and herbaceous fuels are seasonally moist, and not contributing to rates of spread; grasses are partially to fully cured. Fuel conditions change by aspect, previous fire history, and soil moisture. Low crown base height (ladder fuels) is present in most of the timbered areas.

Today's potential fire behavior may include pockets/areas of active surface fire spread with wind/slope alignment. Primary spread mechanism has been backing with rollout, active flanking on slopes, and limited head fire spread. Rapid spread may occur with slope reversals and continuous fuels. Heavy fuels are retaining heat and contributing to surface spread with wind and low RH during the burn period. Early season fuel condition is inhibiting full fire behavior potential – live fuels are moist, some grasses are still curing.

* FFM= 4%-6%, 1000hr. moisture=18%, Woody fuels 190%, Probability of Ignition-60-80%, Max Spotting < 0.5

Fuel Type	Rate of Spread	Flame Length	Backing ROS
... If your work area includes -	(CH/HR = FPM)	Feet	FPM
GR2 - Moderate load grass/shrub	2-4	<2	<2
SH2 - Moderate load shrub	3-5	2	2
TU5 - High load Timber w/ Understory	10-15	6-8	5
TL8 - Long needle timber litter	10-15	2-4	3

Specific Assignments:

Div. A – Expect continued spread in headwaters of Meadow Cr with flanking, backing and short head fire runs. Flare-ups likely.

Div. Z – Ragged edge fire edge on north side of Prince Cr will continue to back, flank, rollout. Possible short head fire runs with wind.

Other Divisions – Should not be affected by fire activity during the burn period. Monitor smoke direction and amount.

Air Operations: Breezy SE wind gusts to 15 by afternoon. Monitor ridge top wind transitions, and lake wind effect.

Safety

Potential for increased fire activity in several areas including some interior torching...multiple areas of fire activity will require Lookouts, Communications, and Escape Routes and Safety Zones being established before engaging fire suppression (and throughout the operational period – watch for changing conditions).

Warmer and dryer weather result in decreased fine fuel moisture. Ignition of fine fuels causes fire spread. Spreading fire requires decisions and actions that require clear thinking, good judgement and assurance that LCES is in place. Good firefighters make good decisions – work smarter not harder.

*Today's Fire Behavior Forecast contains 593 words written for your situational awareness.

DIVISION ASSIGNMENT LIST		1. Branch I	2. Division / Group A				
3. Incident Name Pioneer		4. Operational Period Date: 06/25/2024 Time: 0700-2100					
5. Operations Personnel							
Operations Chief	Jon Larson		Division / Group Supervisor	Seth Missal / James Fields (T)			
Operations Chief (Plans)	Rob Poyner (T)		Branch Director	Thom Taylor			
Safety Officer	Matt Broyles, Jeremiah Maghan (T)		Air Attack Supervisor	Fed Hass <i>Chad Bergren</i>			
6. Resources Assigned this Period							
	Strike Team / Task Force / Resource Designator	Leader	Number Persons	Trans. Needed	Notes	Tentative Last Work Day	
1.	O-49 TFLD	Jeremy Zemke	1			6/26	
2.	O-52 TFLD - (T)	Dante Ybarra	1			6/26	
3.							
4.	C-8 CRW1 Union IHC	Eric Jorgenson	25			6/27	
5.	C-9 CRW1 Zigzag IHC	Sandra Sperry	25			6/28	
6.	C-13 CRW1 Vale IHC	Glen Heitz	20			7/4	
7.	O-184 WFM1 Grass Lake	William Johnson	9			7/7	
8.							
9.	O-67 MEDIC 3	Adam Lathrop	1			7/4	
10.	O-137 EMT 3	James Franklin	1			7/1	
11.	O-153 EMT 2	Aiden Noel	1			7/1	
12.							
13.	O-175 SOFR	Melissa Moore	1			7/4	
14.	O-174.52 SOFR	George Libercajt	1			7/7	
15.							
7. Control Operations							
Task: Contain fire spread to the northwest where terrain and fuels allow for highest probability of success. Assess fire perimeter progression to the north and east at higher elevations. Implement point protection efforts on federal & private infrastructure.							
Purpose: To slow fire progression, provide time for suppression tactics, and prep around critical values.							
End state: Minimize fire impacts to critical values including private inholdings and Forest Service infrastructure.							
8. Special Instructions							
<ul style="list-style-type: none"> In large or long term spike camps use helicopters, boats, or pack stock to deliver portable backcountry latrines and remove human waste if necessary. If camp does not have adequate pack, boat, or air support for human waste management, establish community latrines well away from water sources and common areas. Use human waste bags, if necessary. Minimize ground disturbance on the Moore Point and Meadow Creek alluvial fans in order to protect sensitive resources. Ensure hazard mitigations and IWI protocols are in place before taking action. 							
9. Division / Group Communication Summary							
Function	Frequency	System	Channel	Function	Frequency	System	Channel
Command Repeater	See Comm Plan			Command	See Comm. Plan		
TAC				Air To Ground	See Comm. Plan		
Prepared by (Resource Unit Leader): Name: Gary Duranceau			Approved by (Planning Section Chief): Name: Mike Crawford		Date	Time	
					6/24/24	1900	

DIVISION ASSIGNMENT LIST		1. Branch I	2. Division / Group Z				
3. Incident Name Pioneer		4. Operational Period Date: 06/25/2024 Time: 0700-2100					
5. Operations Personnel							
Operations Chief	Jon Larson		Division / Group Supervisor	Travis Baker, Frank Heilman (T)			
Operations Chief (Plans)	Rob Poyner (T)		Branch Director	Thom Taylor			
Safety Officer	Matt Broyles, Jeremiah Maghan (T)		Air Attack Supervisor	Ted Hass <i>Chad Bergren</i>			
6. Resources Assigned this Period							
	Strike Team / Task Force / Resource Designator	Leader	Number Persons	Trans. Needed	Notes	Tentative Last Work Day	
1.	O-48 TFLD	Jeff Coburn	1			6/26	
2.							
3.	O-41 WFM1 Eagle Cap	Gabe Hale	10			6/25	
4.	O-182 WFM1 Selway		14			7/8	
5.							
6.	A-23 Boise Helitack	Jean Luke Ankney	3			7/6	
7.							
8.	A-27 UR-31	Ryan Gregg	4			6/26	
9.							
10.	O-75 MEDIC 4	Nathan Etherington	1			6/28	
11.	O-51 MEDIC 1	Remington Becker	1			7/3	
12.							
13.	O-63 SOF2	Larry Wright	1			6/24	
14.	O-174.52 SOFR	George Libercajt	1			7/7	
15.							
7. Control Operations							
<p>Task: Contain fire spread to the southwest ^{east} where terrain and fuels allow for high probability of success. Assess fire perimeter progression to the west/southwest ^{east/southeast} at higher elevations.</p> <p>Purpose: To slow fire progression, provide time for suppression tactics, and prep around critical values.</p> <p>End state: Minimize fire impacts to critical values including private inholdings and Forest Service infrastructure</p>							
8. Special Instructions							
<ul style="list-style-type: none"> In large or long term spike camps use helicopters, boats, or pack stock to deliver portable backcountry latrines and remove human waste if necessary. If camp does not have adequate pack, boat, or air support for human waste management, establish community latrines well away from water sources and common areas. Use human waste bags, if necessary. Ensure hazard mitigations and IWI protocols are in place before taking action. 							
9. Division / Group Communication Summary							
Function	Frequency	System	Channel	Function	Frequency	System	Channel
Command Repeater	See Comm Plan			Command	See Comm. Plan		
TAC				Air To Ground	See Comm. Plan		
Prepared by (Resource Unit Leader): Name: Gary Duranceau			Approved by (Planning Section Chief) Name: Mike Crawford		Date 6/24/24	Time 1900	

DIVISION ASSIGNMENT LIST				1. Branch II		2. Division / Group D	
3. Incident Name Pioneer				4. Operational Period Date: 06/25/2024 Time: 0700-2100			
5. Operations Personnel							
Operations Chief		Jon Larson		Division / Group Supervisor		Ben Lippert / Silas Baffa (T)	
Operations Chief (Plans)		Rob Poyner (T)		Branch Director		Thom Taylor	
Safety Officer		Matt Broyles, Jeremiah Maghan (T)		Air Attack Supervisor		Tedd Hass Chad Bergren	
6. Resources Assigned this Period							
Strike Team / Task Force / Resource Designator			Leader	Number Persons	Trans. Needed	Notes	Tentative Last Work Day
1.	O-183 TFLD		Harley Hamman	1			7/6
2.	O-147 SMOD LNP CREW 76		Sara Martinez	7			7/3
3.	O-148 SMOD HVP CREW 1		Brent Webb	10			7/3
4.	O-218 WFM2 Olympic		Jonah Gray	10			7/6
5.	O-184 FELB		Marty Cozart	1			7/6
6.	O-186 FMOD Kintner Timber		Cory Kintner	2			7/6
7.	O-185 FMOD Brothers Fire		Levi Merritt	2			7/6
8.	O-166 REAF		Jordan Spaak	1			7/4
9.	O-235 REAF		Cade Simpson	1			7/7
10.	O-168 ARCH		Ernest Wingate	1			7/7
11.	O-167 ARCH		Jason Wright	1			7/5
12.	O-165 REMS 2		Brayden Kirk	4			7/10
13.	++C-11 CRW1 Redmond IHC		Dave Varon	20			6/28
14.	++O-129 FELB		Mel Tenneson	1			7/1
15.	++O-127 FMOD Rainstorm		Kendall Cain	2			7/1
16.	++O-128 FMOD Rainstorm		Mike Lind	2			7/1
17.	O-170 THSP		Tanya Neider	1			7/3
18.	++O-142 SOF2		Kelly Jensen	1			7/1
19.	O-174.88 SOFR		Leo Engleson	1			7/7
7. Control Operations							
<p>Task: Begin construction of contingency lines around the community of Stehekin. Look for opportunities to contain fire spread in and around Flick Creek area where terrain and fuels allow for highest probability of success.</p> <p>Purpose: Minimize fire impacts to critical values including private inholdings, the community of Stehekin, and Forest Service infrastructure.</p> <p>End state: Critical values including private inholdings, the community of Stehekin, and Forest Service infrastructure are not impacted by the Pioneer fire, while minimizing fire impacts and acres burned utilizing historic wildfire control features and natural barriers.</p>							
8. Special Instructions							
<ul style="list-style-type: none"> In large or long term spike camps use helicopters, boats, or pack stock to deliver portable backcountry latrines and remove human waste if necessary. If camp does not have adequate pack, boat, or air support for human waste management, establish community latrines well away from water sources and common areas. Use human waste bags, if necessary. All operational personnel working on USFS lands will need to conduct a thorough inspection for invasive species seeds on boots including laces, clothing, and gear prior to entering NPS lands. Only fresh (direct from the cache) hose should be utilized on NPS lands to prevent the transport of invasive species seeds. Hose used on USFS lands should not be used on NPS lands and hose used on NPS lands should not be used on USFS lands to prevent the spread of invasives species seeds. Cargo loads being transported onto NPS lands should be inspected for invasive weed seed prior to flight. Ensure hazard mitigations and IWI protocols are in place before taking action. <p>NPS Resource Avoidance Area Flagging is yellow with red polka dots. Contact NPS READs before working in areas where this flagging is present.</p>							
9. Division / Group Communication Summary							
Function	Frequency	System	Channel	Function	Frequency	System	Channel
Command Repeater	See Comm Plan			Command	See Comm. Plan		
TAC				Air To Ground	See Comm. Plan		
Prepared by (Resource Unit Leader): Name: Gary Duranceau				Approved by (Planning Section Chief): Name: Mike Crawford		Date: 6/24/24	Time: 1900

ICS 204

E119 DRIV

Stephen Bouche (1)

NFES 1328 7/2

DIVISION ASSIGNMENT LIST		1. Branch V	2. Division / Group S				
3. Incident Name Pioneer		4. Operational Period Date: 06/25/2024 Time: 0700-2100					
5. Operations Personnel							
Operations Chief	Jon Larson		Division / Group Supervisor	Linda Gibson / Holt Jaeger (T)			
Operations Chief (Plans)	Rob Poyner (T)		Branch Director	Alfred Wiehl			
Safety Officer	Matt Broyles, Jeremiah Maghan (T)		Air Attack Supervisor	Ted Hass <i>Chad Bergren</i>			
6. Resources Assigned this Period							
	Strike Team / Task Force / Resource Designator	Leader	Number Persons	Trans. Needed	Notes	Tentative Last Work Day	
1.	O-112 TFLD	David Ortlund				7/1	
2.	O-113 TFLD (T)	Gavin Young				7/1	
3.	O-110 TFLD	Shane Clifton				6/30	
4.	O-111 TFLD (T)	Lars Olson				6/30	
5.	O-115 HEQB	Garrett Hansen				6/30	
6.	O-117 HEQB (T)	Ian Fox				6/30	
7.	O-130 FELB	Rob Winkler				7/2	
8.	O-126 FMOD Fire Contracting Serv.	Ethan Wilson				7/1	
9.	**C-10 CR2I Methow Valley IA	Benjamin Boucher				6/29	
10.	**C-18 CR2I Colville	Jacob Morse				7/6	
11.	E-73 WTS1 Strand Tenders	Wade Strand				6/27	
12.	E-78 WTS2 King Hydroseeding	Bill Black				7/10	
13.	E-92 DZR3 Batchelor Excavation	Jay Batchelor				6/28	
14.	E-101 SKG2 NW Diesel Dudes	John Lotze				7/3	
15.	E-102 SKG2 Dukes Equipment	Justin Durston				7/1	
16.	E-103 MBM2 Marcon Timber	Dave Landes				7/1	
17.	E-104 MBM2 Havillah Logging	Albert Johnson				7/1	
18.	E-105 MBM2 Justin Pitts	Justin Pitts				7/1	
19.	E-69 FTRA Morris Forestry	Jake Wilcox				7/7	
20.	**E-118 ENG6 Little Pend Oreille	Thomas Boggs				7/1	
22.	O-43 REMS 1	Caitlin Lucia				6/25	
23.	O-141 SOFR	Kevin Pfister				7/2	
24.	E-18, E-93, E-94 UTV's					7/2	
7. Control Operations Task: Implementation of control from South Navaree CG to Lake Chelan. Purpose: To establish a barrier to fire to the east of Safety Harbor Creek. End state: Control line anchored from South Navaree CG to Lake Chelan.							
8. Special Instructions Ensure hazard mitigations and IWI protocols are in place before taking action. ** Denotes available for Initial Attack							
9. Division / Group Communication Summary							
Function	Frequency	System	Channel	Function	Frequency	System	Channel
Command Repeater	See Comm Plan			Command	See Comm. Plan		
TAC				Air To Ground	See Comm. Plan		
Prepared by (Resource Unit Leader): Name: Gary Duranceau			Approved by (Planning Section Chief): Name: Mike Crawford			Date: 6/24/24	Time: 1900

ICS 204

E148 UTV
E149 UTV
REAF Carissa Camenson
REAF Eireann Pederson

NFES 1328

DIVISION ASSIGNMENT LIST		1. Branch V	2. Division / Group Contingency/Roads				
3. Incident Name Pioneer		4. Operational Period Date: 06/25/2024 Time: 0700-2100					
5. Operations Personnel							
Operations Chief	Jon Larson	Division / Group Supervisor	Jennifer Harris / Eric Metzger (T)				
Operations Chief (Plans)	Rob Poyner (T)	Branch Director	Alfred Wiehl				
Safety Officer	Matt Broyles, Jeremiah Maghan (T)	Air Attack Supervisor	Ted Hass Chad Bergren				
6. Resources Assigned this Period							
	Strike Team / Task Force / Resource Designator	Leader	Number Persons	Trans. Needed	Notes	Tentative Last Work Day	
1.	O-83 TFLD	Mark Lewis	1			6/29	
2.	O-114 TFLD (T)	TJ Whitehall	1			7/1	
3.	O-116 HEQB (T)	Tyler Meyer	1			6/30	
4.	C-19 CR2I Cle Elum RD	Cris Machado	18			7/8	
5.	E-74 WTS2 MVP Team	Dale Conrad	1			6/27	
6.	E-75 WTS2 David Rains	Ron Laymance	1			6/30	
7.	E-83 WTS2 King Hydroseeding	Joseph Ivie	1			6/27	
8.	E-76 WTS2 Mountain View Wildfire	Wick Fife	1			7/1	
9.	E-143 EXC2 Delange Enterprises	Pete Delange	2			7/5	
10.	E-71 GRD2 Pettet	Mark Rowe	2			6/27	
11.	E-72 GRD2 Scotts Excavating	Lucas Scott	2			7/7	
12.	E-100 DZR4 Douglas Logging	Steve Douglas	2			7/1	
13.	**E-117 ENG6 Wenatchee River	Nicholas Gonzales	5			7/3	
14.	O-68 MEDIC 2	Joel Bower	1			7/3	
15.	O-76 MEDIC 5	Brian Linacre	1			7/7	
16.							
17.	O-85 SOFR	Andy Murrin	1			6/27	
18.	E-19, E-44 UTV's						
19.							
20.							
7. Control Operations Task: Scout proposed control lines at Oss Peak and Johnson Creek. Assess structures from Deer Point to Mitchel Creek. Purpose: To protect critical values at risk. End state: To have established control lines in place that correspond to Pioneer Fire strategic plan.							
8. Special Instructions Ensure hazard mitigations and IWI protocols are in place before taking action. ** Denotes available for Initial Attack							
9. Division / Group Communication Summary							
Function	Frequency	System	Channel	Function	Frequency	System	Channel
Command Repeater	See Comm Plan			Command	See Comm. Plan		
TAC				Air To Ground	See Comm. Plan		
Prepared by (Resource Unit Leader): Name: Gary Duranceau			Approved by (Planning Section Chief): Name: Mike Crawford		Date: 6/24/24	Time: 1900	

ICS 204 **E157 WTS2 Pine Mountain Bob Goss (U)** **7/7**
0106 TFLD Andy Hall **NFES 1328**
REAF Carissa Camenson **6/29**
REAF Eireann Aderson

DIVISION ASSIGNMENT LIST		1. Branch V	2. Division / Group Staging				
3. Incident Name Pioneer		4. Operational Period Date: 06/25/2024 Time: 0700-2100					
5. Operations Personnel							
Operations Chief	Jon Larson	Division / Group Supervisor	Jon Merager				
Operations Chief (Plans)	Rob Poyner	Branch Director	Alfred Wiehl				
Safety Officer	Matt Broyles, Jeremiah Maghan (T)	Air Attack Supervisor	Ted Hass Chad Bergren				
6. Resources Assigned this Period							
	Strike Team / Task Force / Resource Designator	Leader	Number Persons	Trans. Needed	Notes	Tentative Last Work Day	
1.	O-131 STAM	Jon Merager	1			7/5	
2.							
3.	E151 MBM2 Duke's Equip	Chris Boles	2			7/9	
4.	E153 MBM2 FEL1 Duke's Equip	Nick Marley	2			7/8	
5.	E184 SKG2 Western Fire Suppression	Rick Lauritzen	2			7/8	
6.	E155 SKG2 Beaman, Kelsi		2			7/7	
7.							
8.	O 243 HEQB	Everardo Santillan	1			7/8	
9.							
10.							
11.							
12.							
13.							
14.							
15.							
16.							
7. Control Operations							
Task: Remain ready and available for divisions as needed.							
Purpose: To assist divisions as needed to complete missions as appropriate.							
End state: Support suppression efforts as needed to protect communities.							
8. Special Instructions							
9. Division / Group Communication Summary							
Function	Frequency	System	Channel	Function	Frequency	System	Channel
Command Repeater	See Comm Plan			Command	See Comm. Plan		
TAC				Air To Ground	See Comm. Plan		
Prepared by (Resource Unit Leader): Name: Gary Duranceau			Approved by (Planning Section Chief): Name: Mike Crawford		Date	Time	
					6/24/24	1900	

DIVISION ASSIGNMENT LIST		1. Branch	2. Division / Group H				
3. Incident Name Pioneer		4. Operational Period Date: 06/25/2024 Time: 0700-2100					
5. Operations Personnel							
Operations Chief	Jon Larson		Division / Group Supervisor				
Operations Chief (Plans)	Rob Poyner (T)		Branch Director				
Safety Officer	Matt Broyles, Jeremiah Maghan (T)		Air Attack Supervisor	Ted Hass - Chad Bergren			
6. Resources Assigned this Period							
	Strike Team / Task Force / Resource Designator	Leader	Number Persons	Trans. Needed	Notes	Tentative Last Work Day	
1.							
2.							
3.							
4.							
5.							
6.							
7.							
8.							
9.							
10.							
11.							
12.							
13.							
14.							
15.							
16.							
7. Control Operations							
Task: Complete a comprehensive inventory of critical values, proposed control line options to protect those values and the risk to responders associated with those actions in SA4.							
Purpose: To analyze the strategy as probability vs success.							
End state: A long term durable strategic plan for the Pioneer Fire.							
8. Special Instructions							
<ul style="list-style-type: none"> In large or long term spike camps use helicopters, boats, or pack stock to deliver portable backcountry latrines and remove human waste if necessary. If camp does not have adequate pack, boat, or air support for human waste management, establish community latrines well away from water sources and common areas. Use human waste bags, if necessary. Ensure hazard mitigations and IWI protocols are in place before taking action. 							
9. Division / Group Communication Summary							
Function	Frequency	System	Channel	Function	Frequency	System	Channel
Command Repeater	See Comm Plan			Command	See Comm. Plan		
TAC				Air To Ground	See Comm. Plan		
Prepared by (Resource Unit Leader): Name: Gary Duranceau			Approved by (Planning Section Chief) Name: Mike Crawford		Date 6/24/24	Time 1900	

DIVISION ASSIGNMENT LIST		1. Branch	2. Division / Group Boat				
3. Incident Name Pioneer		4. Operational Period Date: 06/25/2024 Time: 0700-2100					
5. Operations Personnel							
Operations Chief	Jon Larson	Division / Group Supervisor	Nate Crawford				
Operations Chief (Plans)	Rob Poyner (T)	Branch Director					
Safety Officer	Matt Broyles, Jeremiah Maghan (T)	Air Attack Supervisor	Ted Hass <i>Chad Bergren</i>				
6. Resources Assigned this Period							
	Strike Team / Task Force / Resource Designator	Leader	Number Persons	Trans. Needed	Notes	Tentative Last Work Day	
1.	O-161 TFLD Boat Coordinator	Cameron Chambers	1			7/3	
2.	O-50 TFLD	Todd Olson	1			6/26	
3.	O-160 TFLD	Brian Turner	1			7/3	
4.	O-162 HEQB	Nicolas Glatt	1			7/3	
5.	O-163 HEQB (T)	Emma Ahlrichs	1			7/3	
6.							
7.	E-1 TBOT WA-NCP NPS		1				
8.	E-3 TBOT Chelan Co. F&R#7		2				
9.	E-12 TBOT WA-OWF Chelan RD		1				
10.	E-91 TBOT DNR Mud Puppy		1				
11.	E-98 TBOT Chelan County Sheriffs		1				
12.	E-43 TBOT Llama Boat		1				
13.							
14.							
15.	O-136 MEDIC 6	Steve Medina	1			7/8	
16.	O-152 EMT 1	Ivan Huld	1			7/1	
17.							
18.							
7. Control Operations							
Task: Contain fire spread to the southwest where terrain and fuels allow for high probability of success. Assess fire perimeter progression to the west/southwest at higher elevations.							
Purpose: To slow fire progression, provide time for suppression tactics, and prep around critical values.							
End state: Minimize fire impacts to critical values including private inholdings and Forest Service infrastructure							
8. Special Instructions							
<ul style="list-style-type: none"> In large or long term spike camps use helicopters, boats, or pack stock to deliver portable backcountry latrines and remove human waste if necessary. If camp does not have adequate pack, boat, or air support for human waste management, establish community latrines well away from water sources and common areas. Use human waste bags, if necessary. Ensure hazard mitigations and IWI protocols are in place before taking action. 							
9. Division / Group Communication Summary							
Function	Frequency	System	Channel	Function	Frequency	System	Channel
Command Repeater	See Comm Plan			Command	See Comm. Plan		
TAC				Air To Ground	See Comm. Plan		
Prepared by (Resource Unit Leader): Name: Gary Duranceau			Approved by (Planning Section Chief): Name: Mike Crawford		Date	Time	
					6/24/24	1900	

AIR OPERATIONS SUMMARY ICS-220						Time Prepared 18:00	Date Prepared 6/24/2024	Prepared By Mark Hocken AOB					
Incident Name / Number Pioneer / WA-SES-000173		Sunrise 05:02	Sunset 21:02	Airport S10	Pumpkin 21:32	Shutdown 21:00	Operational Period - Date 6/25/2024				Operational Period - Time 0600-2200 0700-2100		
General Remarks, Safety Notes, Hazards, Air Operations Special Equipment, etc. <i>*Order All Aircraft through Command to Helibase.</i> <i>*Sanitize Buckets before changing water sources.</i> <i>*Clear drop area/line before initiating drop sequence.</i> <i>*Be cognizant of all overhead and environmental hazards while working with Aircraft.</i> <i>*All GPS is to be collected in DMM</i> <i>*** WINDS: return to helibase if winds become unmanageable.</i> <i>*Aviation daily cost to: 2024.pioneer.finance@firenet.gov</i> <i>*Aviation daily cost to: pioneerhelibase2024@gmail.com</i>						Helibase Information Pioneer/ Helibase Location 47 51.96 N 119 56.56 W Phone (971) 762-8575		TFR (A-74) Surface to 10,000' In Effect - 24 Hours Hellspots H1 48 10.755N / 120 31.803W H5 48 12.162N / 120 35.447W H10 48 14.050N / 120 36.461W H12 48 13.325N / 120 35.908W H14 (Stehekin AP) 48 20.75N / 120 43.25W H15 48 08.754N / 120 29.813W H16 48 07.74N / 120 29.55W H25 47 59.212N / 120 16.526W				Medivac Ship Information Short Haul Name: N-407RL Phone: (509) 560-9484 Make/Model 407 Location: 25 Mile/Lake Chelan HB Request Procedure for This Aircraft: Communications on Command, Order through Helibase/CWICC,	
Incident Frequencies	RX	Tone	TX	Tone	AM/FM	Position	Name	Phone		EQUIPMENT/SUPPLIES			
Air to Air Primary (A-8)	123.4000		123.4000		AM	AOBD (Planning)	Mark Hocken	(541) 261-1085		Com Trailer	E-20		
Air to Air Secondary (A-9)	118.2750		118.2750		AM	AOBD (Field)	Ted Hass	(541) 646-1318		Hand Wash Station	E-47		
						ASGS	Dave Moore	(513) 616-9192		Water Tender	E-77		
A/G Pri Tactical (A-10)	169.1500		169.1500		FM	ASGS-T	Ben Thayer	(208) 830-1636		Water Tender	E-14		
A/G Sec Operational (A-11)	168.4000		168.4000		FM	HEBM-T	Ben Wagner	(206) 473-2165					
TOLC	166.6125		166.6125		FM	HEBM	Jerry Rule	(253) 548-7711					
						ATGS	Jerry Messinger	(541) 306-0907					
DECK	163.1000		163.1000		FM	HLCO	Chad Berggren	(541) 219-2594					
						UAS	Ryan Gregg	(360) 852-2296					
COMMAND						See ICS 205 Communications Plan							
AIR GUARD	168.6250		168.6250	110.9	FM								
VMED 29	155.3475	156.7	155.3475	156.7	FM	CWICC	Aircraft Desk	(509) 884-3473 x2					
						UAO	Cory Dolberry	(509) 668-2801					
HELICOPTERS - Assigned						HELICOPTERS - GACC Prepo							
FAA #	TYPE	Make/Model	Helibase	Start	Avail	Remarks	FAA #	TYPE	Make/Model	Airport	Start	Avail	Remarks
HB-16FH (A-22)	1	UH-60	Chelan	0800	0900	BKT/LL	H-205TK	2	Bell 205A	Chelan	0800	0900	Rapps
HB-17FH (A-23)	1	UH-60A	Chelan	0800	0900	BKT/LL							
HB-161KA (A-24)	1	K-1200	Chelan	0800	0900	BKT/LL							
HB-344RA (A-45)	1	CH-47D	Chelan	0800	0900	BKT/LL							
H-304HA (A-31)	2	Bell 205A	Chelan	0800	0900	BKT/LL							
H-407RL (A-1)	3	407	Chelan	0800	0900	Wenatchee Short-haul							
H-684H (A-46)	3	407	Chelan	0800	0900	BKT/LL/Recon/HLCO							
H-544AS (A-60)	3	AS350B3	Chelan	0800	0900	HLCO/Recon							
UAS						FIXED WING AA/HLCO							
Call Sign	Type	Make/Model	Base	Start	Avail	Remarks	FAA #	Call Sign	Make/Model	Base	Start	Avail	Remarks
UR-31	3	AltaX	Lucerne	0600	2200	IR/PSD	N-586DV (A-42)	610	Commander	WEN	0900	1000	Assigned ATGS
							H-544AS (A-60)	4AS	AS350B3	Chelan	0800	0900	Assigned HLCO
							N-197GB	617	Commander	Wenatchee	0900	1000	Wenatchee IA (not assigned)

INCIDENT RADIO COMMUNICATIONS PLAN (ICS 205)

Controlled Unclassified Information//Basic

1. Incident Name:			2. Date/Time Prepared:			3. Operational Period:				
PIONEER			Date: 06/24/2024 Time: 1600			Date/Time From: 06/25/2024 0600			Date/Time To: 06/26/2024 0600	
4. Basic Radio Channel Use:										
Zone Group	Ch #	Function	Channel Name/Trunked Radio	Assignment	RX Freq	RX Tone/NAC	TX Freq	TX Tone/NAC	Mode (A,D, or M)	Remarks
	1	TACTICAL	TAC 1	DIV A & S -	168.0500	123.0	168.0500	123.0	A	
	2	TACTICAL	TAC 2	DIV D	168.2000	123.0	168.2000	123.0	A	
	3	TACTICAL	TAC 3	DIV Z	168.6000	123.0	168.6000	123.0	A	
	4	TACTICAL	TAC 4	DIV H	166.7250	123.0	166.7250	123.0	A	
	5	TACTICAL	TAC 5	CONTINGENCY	166.7750	123.0	166.7750	123.0	A	
	6	TACTICAL	TAC 6	BOAT	168.2500	123.0	168.2500	123.0	A	
	7	COMMAND	CMD 7	ALL	168.4750	123.0	165.4000	123.0	A	CHELAN BUTTE
	8	COMMAND	CMD 8	ALL	169.5375	123.0	164.7125	123.0	A	OLD MAID MT
	9	COMMAND	CMD 9	ALL	170.4500	123.0	168.1000	123.0	A	MOORE MT
	10	COMMAND	CMD 10	ALL	170.0125	123.0	165.2500	123.0	A	SLIDE RIDGE
	11	COMMAND	CMD 11	ALL	170.4125	123.0	165.9625	123.0	A	FOX MT
	12	TACTICAL	A/G PRI	ALL DIVS	169.1500	000.0	169.1500	000.0	A	
	13	AIR TO GROUND	A/G SEC	ALL DIVS	168.4000	000.0	168.4000	000.0	A	
	14	AIR TO GROUND	A/G 3	ALL DIVS	166.6125	000.0	166.6125	000.0	A	TAKE OFF LANDING CHANNEL
	15	AIR TO GROUND	VMED 29	ALL DIVS	155.3475	156.7	155.3475	156.7	A	AIR EMS COORDINATION
	16	AIR TO GROUND	AIRGUARD	ALL DIVS	168.6250	000.0	168.6250	110.9	A	EMERGENCY AIRCRAFT CONTACT
5. Special Instructions: 24 hour staffing: PIONEER COMMUNICATIONS PHONE NUMBER: (208) 891-7948 / CURRENT CLONE "PIE 6-21"										
6. Prepared By COML				Name: SETH BAUMGARTEN				Signature: <i>Seth Baumgarten</i>		
ICS 205				IAP Page				Date/Time: 6/24/24 1600		

SAFETY MESSAGE

SAFETY starts with YOU We are ALL accountable for SAFE behaviors

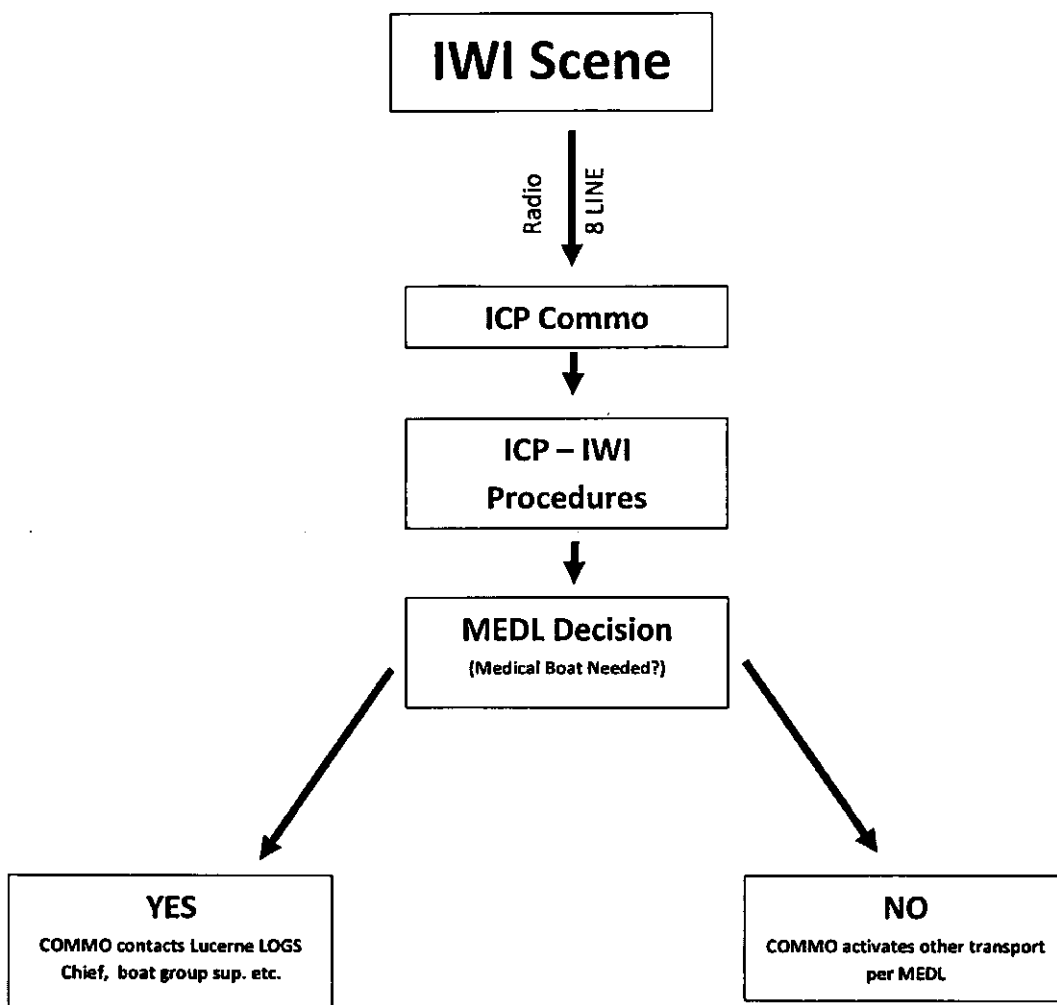
INCIDENT Pioneer Fire

DATE: June 25, 2024

Shift Day

Medical Assistance/ Response:

Team 7 will be carrying on the medical evacuation procedures established by Team 13 until further notice. This includes medical evacuation by boat. There are specific procedures for activation of medical boat evacuation, those procedures are implemented primarily in ICP. The accompanying flow chart illustrates the process for activation of medical evacuation by boat by line personnel. Note that the resources on scene at the IWI need only report the IWI information to ICP communications by radio using the standard "8 Line" form on the last page of the IAP. On- scene line personnel at the IWI should not attempt to activate medical evacuation by boat independently, or by directly contacting boats, or anybody other than ICP communications.



IMT NW-7 Safety Officers: Matt Broyles, Jeremiah Maghan (T)

**Pioneer Fire
Human Resource Message**

June 25, 2024

Welcome Message

Hi, my name is Margaret Dietrich. I'm the Human Resource Specialist assigned to this incident.

My responsibilities are to ensure an appropriate work environment exists; and assist in facilitating personnel-related issues; and to provide general information.

Please contact me if I can assist you in any way while on this incident. I have workspace located in the ICP.

Margaret Dietrich
Human Resource Specialist
360-701-3154

Thought for the day: "Diversity is not only about bringing different perspectives to the table but also about creating an environment where everyone feels encouraged to contribute their unique ideas." – Linda Naiman

FINANCE MESSAGE

Finance Email: 2024.pioneer.finance@firenet.gov

Finance Phones: *Will Have New Phone Number to Share tomorrow. Team 7 Finance*

This incident requires electronic documentation. Please email your time to the address above. Scanned PDF's please, no .JPG's. Feel free to call finance for help if needed. Scanners are also available at ICP.

Required Documents

Overhead, Agency Crews & Cooperators	Contract Resources
Finance docs needed: Resource Order, Manifest, Cooperative Agreement, Casual Hire Form w/ECI# (as applicable)	Finance docs needed: Resource Order, Manifest, Full Contract/Agreement, Certifications (<i>if required</i>) Pre-Inspection
Daily: CTRs, Shift Tickets	Daily: CTRs, Shift Tickets, receipts (claims, etc.) NOTE: Document travel times and odometer readings
Demob: Signed OF-288; Signed OF-286	Demob: Contractor Evaluations, Shift Tickets, receipt(s) for Addition/Deductions, Post-Inspection, Signed OF-286
"H-Pay"- Entitlement to Hazardous Pay Differential (5 CFR 550.904) – Hazard pay MUST be supported by a justification. If justification is not provided, you chance losing your entitlement.	Please call finance regarding issues with your time: No one on List today, any questions for Finance, please email us. Tomorrow we will have a phone number for Team 7 Finance Thank You.

Incident Name: **Pioneer**
Incident Number: **WA-SES-000173**

Financial codes:
WA DNR – 221-LDW
DOI – RZ79
USDA – PNRZ79 (1522)

Please make sure you check in using QR code on the front of the IAP and then email your time daily.
THANK YOU!!



United States Department of Agriculture

OKANOGAN-WENATCHEE NATIONAL FOREST

Resource Guidelines for Fire Suppression

Fire: Pioneer

Location: Pioneer Creek, North shore of Lake Chelan

Date: 6/18/2024

Resource Advisors

Lead READ: Brigitte Ranne 509-663-6118, brigitte.ranne@usda.gov

REAF: Hector Rodriguez 509-393-5379, Hector.Rodriguez3@usda.gov

REAF: Eireann Pederson 360-854-8197, eireann.pederson@usda.gov

HUMAN SAFETY IS THE HIGHEST PRIORITY FOR EVERY EMERGENCY RESPONSE ACTION

MIST for Spike Camp and Lucerne Forward Operating Base Management

- Employ minimum impact suppression tactics (MIST) where feasible, especially in remote or sensitive areas.
- If spike camps are necessary, use existing, or previously impacted campsites where available. If existing campsites are not available; use your local resource advisor to help identify the most resilient sites in rocky or sandy soils. Avoid camping in wet meadows, along streams, or on lake shores.
- Store food properly so that it is not accessible to wildlife. Consider hanging food in trees at least 15 feet off the ground and 5 feet from the trunk of the tree, or store food in sealable containers. Store food away from the campsite (300 feet is ideal) to reduce the risk of human and bear (and rodent!) conflicts.
- Do not let garbage and food scraps accumulate in camp. All garbage and food scraps need to be removed from the camp ASAP and before leaving the site.
- Minimize disturbance to land in preparing bedding and campfire sites. Do not clear vegetation, trench, or excavate a flat spot to create bedding sites.
- Do not use nails in trees. Don't construct camp furniture.
- If a campfire is built for warmth in the evening, build either a pit or mound fire. Use dead and down firewood. Use small diameter wood that burns down more cleanly. Don't burn plastics or aluminum - pack it out with the rest of the camp garbage.



USDA
Forest
Service

Pacific
Northwest
Region

Okanogan-
Wenatchee
National Forest

- In small spike camp situations (not Lucerne), individuals should use the "cat-hole" method of disposing of human waste. Toilet seats should be located a minimum of 200 feet from water sources. Holes should be dug 6-8 inches deep.

In large or long term spike the camps use helicopters, boats, or pack stock to deliver portable backcountry latrines and remove human waste if necessary. If the camp does not have adequate pack, boat, or air support for human waste management, establish community latrines well away from water sources and common areas. Use human waste bags, if necessary.

Dipping and Drafting

- No cross-dipping between water bodies. All buckets or snorkels should be cleaned, inspected, and dried in the sun if they must be used between lakes. Dipping in small lakes must be pre-approved by the READ or AA.
- When drafting, use already disturbed areas for stream access (road crossings, dispersed campsites) to reduce the need for riparian vegetation clearing.
- Use screens (3/32" inch) for all pumping operations.
- Use containment pads and basins under pumps and fuel cans. Ensure a spill kit is present with every operating pump.

Invasive Species

- The fire is burning within an infestation of common crupina, a WA State Class A Noxious weed. Prevent spread of crupina off site – plan to wash hose and other equipment. Request fire fighters brush boots before boarding boat or **before entering National Park Service Land**.
- Inspect slings and remove all plant/soil material prior to use.
- Ensure all camps, staging areas, helispots and cargo areas are free of invasive plants to prevent spread to un-infested areas.
- Weed wash all vehicles when they arrive to the incident and when demobed.

Fisheries /Aquatic Recommendations

- If trees must be felled in riparian areas for suppression or safety reasons, fell them toward streams where possible and minimize bucking where possible.
- Non-mechanized suppression activities are recommended within Riparian Reserves (150-300 ft from stream channel). For example, consider hand lines instead of dozer lines when feasible.

Retardant Use

- Retardant avoidance areas are present in the fire suppression area for both aquatic and terrestrial species.
- Track all retardant drops – locations and amounts.
- Report all mis-applications ASAP to READ. Monitoring and reporting of misapplications is required.

Wet Meadows

- No line or other disturbance in wet meadows in the Summer Blossom area (east of South Navarre campground above and below the 8200 road) and at Coyote and Poison Springs at the headwaters of their respective creeks.

Dry Meadows

- Minimize disturbance from staging and parking areas in dry meadows. These areas recovery slowly and are vulnerable to invasive plant infestation.

White Bark Pine

- Avoid cutting white bark pine whenever possible. Needles of 5 keep it alive! Ask READ for help with ID.

Burnout operations

- Plan to protect whitebark pine of all ages and mature cold and moist forest during burnouts. READ consultation and line officer approval is required for burn plans that include these forest types.
- During burnouts modify firing to retain large trees, large snags and large down wood in forests whenever possible.
- Minimize total acres burned in burnouts.
- Incorporate typical resource protection measures used in RX burning whenever it is safe and practical to do so (such as retention of green islands in moist areas).
- Provide a map of areas that were burned as part of the burnout operation (for use in emergency consultation).

Cultural Resources

- If cultural resources are discovered during suppression activities, leave on site and notify READ.

Photos and Videos Needed!

Photos and short videos (30 seconds or less) are needed to tell the story of the Pioneer Fire.

Please send them to PIO staff
via email: 2024.pioneer@firenet.gov

Provide your name for credit and basic info about where the photo was taken and what's happening in it.

Your photos and videos are being posted at:

Inciweb: Pioneer Fire

Facebook: - <https://www.facebook.com/nwteam7>

- <https://www.facebook.com/pioneerfireinformation>

- <https://www.facebook.com/cwafireinfo>

LOST & FOUND

We have lost and found! Please stop by the Info shop in ICP to find your lost goods!

Thank you!

LOGISTICS HOURS

Shower: 0500 - 1200 & 1400 - 2200

Supply: 0600 - 2200

Ground Support: 0500 - 2200

Fuel Tender: 0700 - 2100

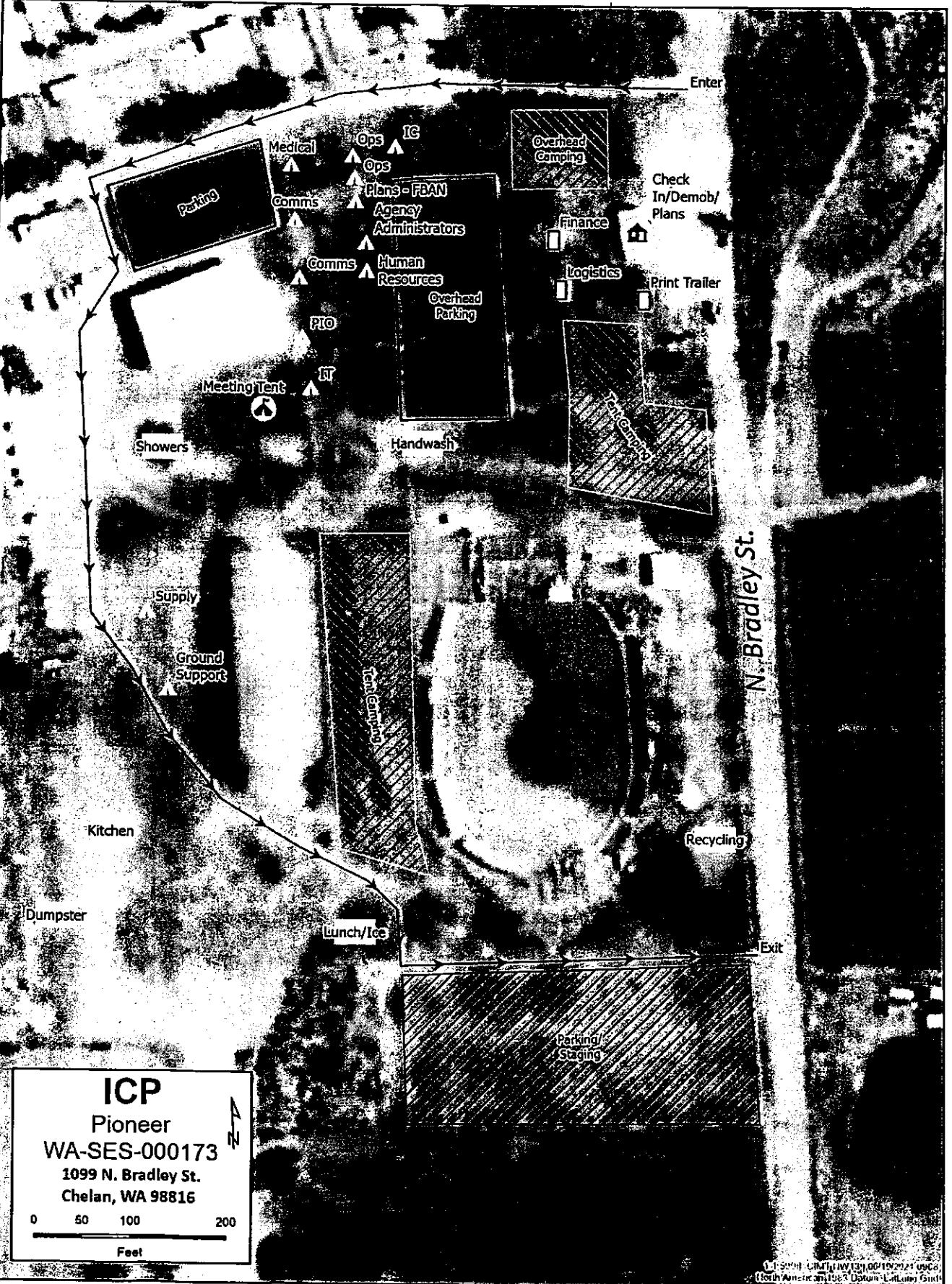
Kitchen:

Breakfast: 0530 - 0900

Dinner: 1800 - 2100

PIONEER CONTACT LIST

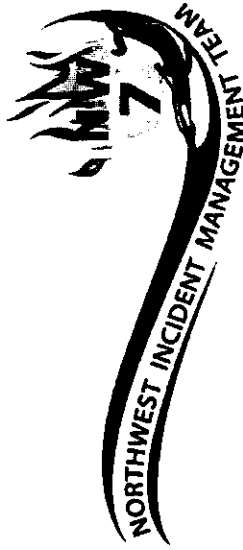
Public Information:	509-210-2926
Communications:	208-891-7870
Check In/Demob:	509-661-5372
Medical:	360-775-5413
Supply:	360-827-5382
Ground Support:	425-274-6215
Finance:	Equipment 208-891-6877 & TIME 208-891-8036



ICP
 Pioneer
 WA-SES-000173
 1099 N. Bradley St.
 Chelan, WA 98816

0 50 100 200
 Feet

U.S. GEOLOGICAL SURVEY
 (North American 1983 Datum - Lathrop Grid)



Team 7 Line Supply Order		Order #			
Date & Time Order Placed	Deliver To Location/Time (Division, Drop Point, Heli Spot, Lat/Long)	Delivery Method (Driver, Heli, DIVS to P/U)			
Order received in Communications (name & time)					
Ordered by (name and Position)					
Ground Contact					
Order received in Transportation by (name & time)					
Contact Freq.					
Order received in Helibase by (name & time)					
Special Instructions/line length/ elevation					
Order shipped to line by (name & time)					
#	Item	Amount	#	Item	Amount
1	Meals #1842 MRE 12/Cs		33	Bath in a Bag, Large # 0712	
2	Water 0048 5 gal cubies		34	Bath in a Bag, Small # 0206	
3	Gatorade 24/Cs		35	Coffee Kit #0480	
4	Batteries, AA #0030 24/pg		36	Coffee 3lb Can	
5	Batteries, AAA #7471 24/pg		37	Folda-Tank 1500 gal # 0664	
6	Gas Unleaded/5 gal		38	Pumpkin 3000 gal. # 0568	
7	2 Cycle Oil #7724 5 Gal mix		39	Backpack Pump # 0909	
8	2 Cycle Oil #3444 1 Gal. mix		40	Mark III pump + Kit # 0148	
9	Diesel [5 gal.]		41	Lightweight Pump + Kit # 8606	
10	Bar Oil #1880 Gal.		42	Volume Pump + # 1222	
11	Bar Oil # 1869, Qt		43	Hose 1 1/2" # 1239 100' lg	
12	Shovel # 0171		44	Hose 1" # 1238 100' lg	
13	Pulaski # 0146		45	Hose 3/4" # 1016 50' lg	
14	Mcleod # 0296		46	Reducer 1 1/2" to 1" # 0010	
15	Combi #1180		47	Reducer 1" to 3/4" # 0733	
16	Chainsaw Kit # 0340		48	Gated "w" 1 1/2" # 0231	
17	Drip Torch # 0241 Empty		49	Gated "w" 1" # 0259	
18	Fusee #0105		50	Gated "w" 3/4" # 0904	
19	Sleeping Pad # 1566		51	In-line Tee 1 1/2" to 1" # 0230	
20	Sleeping Bag # 0022		52	Nozzle KK 1 1/2" # 1082	
21	Fly Tent #0070		53	Nozzle KK 1" # 1081	
22	Plastic Sheeting # 0143		54	Nozzle 3/4" # 0136	
23	Parachute Cord # 0533		55	Nozzle, Forester 1" # 0024	
24	Fiber Tape # 0222		56	Sprinkler kit #1048	
25	Garbage Bags # 0021		57		
26	Leadline 3000 lbs. # 0528		58		
27	Cargo Net 3000lb # 0531		59	Team 7 Hose Lay Kit	
28	Swivel 3000lb # 0526		60		
29	Slingable Bag 72 gal. Bilvet # 0426		61		
30	Foam 5 gal. # 1145		62		
31	Toilet Paper # 0142		63		
32			64		

TEAM 7 HOSE LAY KIT
7/16/2014

Item	Amount
1 1/2 in. synthetic hose	1000 ft.
1 in. synthetic hose	500 ft.
1/2 in. synthetic hose	500 ft.
1 1/2 in. gated wye	5 ea.
1 1/2 in. - 1 in. reducers	5 ea.
1 in. combination nozzle	5 ea.
1 in. - 3/4 in. reducer	5 ea.
3/4 in. valve, shutoff, ball	5 ea.
1/2 in. Nozzle	5 ea.
3/4 in gated wyes	5 ea.

Item	Amount
SPRINKLER KIT NFES # 1048	
Sprinkler head w/couplings	4 ea.
3/4 in. garden hose	250 ft.
1 1/2 x 1 1/2 x 1 in. Tee	4 ea.
1 x 3/4 reducer	4 ea.
1 1/2 in. - 1 in. reducers	1 ea.
3/4 in gated wyes	2 ea.
3/4 in. valve, shutoff, ball	4 ea.
3/4 in. Nozzle	1 ea.
3/4 pressure regulator,	4 ea.
1 in. nozzle, plastic 60 GPM	1 ea.
10 in. adjustable wrench	1 ea.

LINE ORDER PROCESS
Line orders from the field should go through the Communication Unit via radio (primary) or 24-hour phone number shown cover of the IAP. All other supply requests should be submitted, in-person, to the Supply Unit.

DIVISION PLANNING WORKSHEET

NEXT OPERATIONAL DATE	DIVISION/GROUP	NAME OF DIVISION/GROUP
-----------------------	----------------	------------------------

__ ROLL OVER ASSIGNED RESOURCES	__ EXCESS RESOURCES	__ CORRECTION TO 204
---------------------------------	---------------------	----------------------

E OR C NUMBER	RESOURCE DESIGNATOR	LEADER	NO. PERSONS	COMMENTS

OPERATIONAL PROJECTION (Task, Purpose, End State) 24 hrs

OPERATIONAL PROJECTION (Task, Purpose, End State) 48 hrs

OPERATIONAL PROJECTION (Task, Purpose, End State) 72 hrs

__ REQUEST FOR ADDITIONAL RESOURCES

NUMBER	TYPE	RESOURCE KIND	DATE NEEDED

CRITICAL NEEDS: If your resource request is critical, describe the mission and the duration resources are needed.

Boat Schedules

Contact Phone number	509-682-4584	509-682-4584	509-682-4584	509-682-4584	509-669-5045
Days	Lady of the Lake (S)	Lady Express (M)	Lady Liberty (F) (Dual trip day)	Lady Liberty (F) (single trip day)	Stehekin Ferry
	Departs from DP90 Chelan	Departs from DP90 Chelan	Departs from DP90 Chelan	Departs from DP90 Chelan	Departs from DP14 Stehekin
20-Jun		available			available
21	available	available		available	available
22		available		available	available
23	available	available			available
24		available			available
25		available			available
26		available			available
27		available			available
28	available	available	available		available
29		available	available		available
30	available	available	available		available
1-Jul		available	available		available
2		available	available		available
3		available		available	available
4		available		available	available
5	available	available	available		available
	Schedule	Schedule	Schedule	Schedule	Schedule
	Chelan DP90 0830 Depart	Chelan DP90 0830 Depart	Chelan DP90 0800 Depart	Chelan DP90 0800 Depart	Stehekin DP90 1040 Depart
	Fields Pt DP84 0945	Fields Pt DP84 0920	Fields Pt DP84 0815 **	Fields Pt DP84 0815 **	Fish Crk DP21 1100 **
	Prince Crk DP34 1100 **	Prince Crk DP34 1000 **	Lucerne DP27 0900 **	Lucerne DP27 0900 **	Swartz Crk DP23 1105 **
	Lucerne DP27 1145	Lucerne DP27 1040	Stehekin DP14 0930 Arrival	Stehekin DP14 0930 Arrival	Lucerne DP27 1110
	Moore pt DP22 1215 **	Stehekin DP14 1100 Arrival	1 hour layover	6 hour layover	Prince Crk DP36 1135
	Stehekin DP14 1230 Arrival	1.5 hour layover	Stehekin DP14 1030 Depart	Stehekin DP14 1530 Depart	Fields Crk DP84 1300
	1 hour layover	Stehekin DP14 1230 Depart	Lucerne DP27 1100 **	Lucerne DP27 1600 **	Prince Crk DP36 1350
	Stehekin DP14 1400 Depart	Lucerne DP27 1250	Fields Pt DP84 1145 **	Fields Pt DP84 1645 **	Lucerne DP27 1420
	Moore pt DP22 1415 **	Prince Crk DP34 1520 **	Chelan DP90 1200 Arrival	Chelan DP90 1700 Arrival	Stehekin DP90 1425 arrival
	Lucerne DP27 1445	Fields Pt DP84 1410	1 hour layover		
	Prince Crk DP34 1515 **	Chelan DP90 1500 Arrival	Chelan DP90 1300 Depart		
	Fields Pt DP84 1645		Fields Pt DP84 1315 **		
	Chelan DP90 1800 Arrival		Lucerne DP27 1400 **		
			Stehekin DP14 1430 Arrival		Different Company
			1 hour layover		
** request only			Stehekin DP14 1530 Depart		
			Lucerne DP27 1600 **		
Schedule boats early, space is limited.			Fields Pt DP84 1645 **		
Give alternate time and/or dates incase boats are overbooked.			Chelan DP90 1700 Arrival		

Check In Message

- Please complete the virtual check-in process via the QR code on the front cover.
- You are not checked in until you provide the following:
 - 1) Red Cards
 - 2) Roster/Manifest
- Please email documents to: 2024.pioneer.checkin@firenet.gov

Any Questions:

Phone: 509-661-5372

Email: 2024.pioneer.checkin@firenet.gov

Demob Message

- Fliers complete the "Air Travel Request" via the QR code on the front cover 72 hours prior to flight date.
- Return supplies to the Cache.
- Return radios, antennas, etc., to Communications.
- Contact Finance about closing out your paperwork.
- Once the above items have been completed, SCAN the QR code on the front cover and complete the demob questions.

Any Questions:

Phone: 509-662-5376

Email: 2024.pioneer.demob@firenet.gov





Pioneer Fire WA-SES-000173

C&G Contact List

Incident Commander	LeFevre	Nate	nlefevre@blm.gov	(541) 255-6595
Deputy Incident Commander	Orr	Chris	christopher_orr@nps.gov	(530) 640-1464
Safety Officer	Broyles	Matt	admbroyles@gmail.com	(541) 591-6151
Liaison Officer	Christianson	Shawn	shawn.christianson.adm@colvilletribes.com	(509) 429-3348
Liaison Officer	Suba	Mark	marksuba12@gmail.com	(541) 219-9048
Liaison Officer	Brody	Greg	lmgregbrody@gmail.com	(503) 482-8071
Liaison Officer (T)	Marchand	Rhonda	rmarchand76@yahoo.com	(509) 634-1166
Public Information Officer	Stecker	Livia	livia_stecker@firenet.gov	(509) 675-3504
Finance Section Chief	Westgate	Patty	pattywestgate@gmail.com	(541) 892-8432
Finance Section Chief (T)	Bailey	Lori	lori.bailey@usda.gov	(541) 589-0806
Operations Section Chief	Larson	Jon	jon_larson@fws.gov	(208) 631-6488
Operations Section Chief	Merritt	Seth	smerritt@esf-r.org	(425) 501-7384
Operations Section Chief	Kiene	Jesse	jkiene@blm.gov	(541) 531-5568
Operations Section Chief	Poyner	Rob	robert.poyner@usda.gov	(425) 512-2621
Logistics Section Chief	Yager	Max	orcamax2015@gmail.com	(541) 690-6627
Logistics Section Chief	Vaughan	Franklin	franklin.vaughan@usda.gov	(859) 619-7244
Logistics Section Chief	Wedekind	Cindy	cwedekind59@gmail.com	(541) 450-1136
Planning Section Chief	Crawford	Michael	mcrawfor@blm.gov	(458) 212-0501
Planning Section Chief (T)	Plummer	Debbie	dplummer@blm.gov	(509) 991-0334

MEDICAL PLAN (206 WF)

1. Incident/Project Name	2. Operational Period
Pioneer Fire	Date/Time: 06/25/24 0600-2200 0700-2100

3. Ambulance Services			
Name	Complete Address	Phone	Advanced Life Support (ALS) Yes No
Lake Chelan EMS	Chelan, WA	911	X

4. Air Ambulance Services			
Name	Phone/Channel	Frequency, Type of Aircraft & Capability	
Life Flight- Brewster	1-800-232-0911 911	VMED 29, Rotor, ALS, 24 hr	
Airlift NW- Wenatchee	1-800-426-2430 911	VMED 29, Rotor, ALS, 24 hr	
Wenatchee Short Haul- Chelan Airport	Command 7,8,9,10,11 (Linked)	VMED 29, Rotor, BLS, Daytime, Short Haul	
Snohawk 10- Snohomish	1-800-258-5990 911	VMED 29, Rotor, ALS, Daytime, Hoist	
Spokane County Hoist- Spokane	1-509-532-8930 911	VMED 29, Rotor, ALS, 24 hr, Hoist Daytime Only	

5. Hospitals								
Name	Degrees Decimal Minutes		Travel Time From Fire		Phone	Helipad		Level of Care
			Air	Boat		Yes	No	
Lake Chelan Health 110 S. Apple Blossom Drive Chelan WA	Lat:	47° 50' 20 N	30 Min	3 Hr	509-683-2474		X	Level IV Trauma
	Long:	119° 59' 20 W						
Central Washington Hospital 1201 S. Miller Wenatchee WA	Lat:	47° 24. 43 N	1 Hr	4 Hr	509-433-3115	X		Level II Trauma
	Long:	120° 19. 28 W						
Harborview Medical Center 325 9th Ave Seattle WA	Lat:	47° 36. 24 N	1.5 Hr	6 Hr	206-744-4025	X		Level I Trauma Burn Center
	Long:	122° 19. 45 W						

ICP	EMS Responders & Capability:	James Brown MEDL/Paramedic Mariann Turley MEDL/AEMT	360-775-5413 509-496-9370
	Equipment Available on Scene:	ALS Kit, AED, O2, OTC meds	
	Medical Emergency Channel:	Command 7,8,9,10,11 (Linked)	
	ETA for Ambulance to Scene:		
	Air:	NA	
	Ground:	15 Min	
	Approved Heli-Spot:	NA	
	Lat:	NA	
	Long:	NA	

LUCERNE FOB	EMS Responders & Capability:	Ben Meacham MEDL/EMTF MEDIC 6 Steve Medina (Boat Medical) EMT 1 Ivan Huld (Boat Medical)	360-921-3817 360-556-9568 360-888-9880
	Equipment Available on Scene:	ALS Kit, AED, O2, OTC meds	
	Medical Emergency Channel:	Command 7,8,9,10,11 (Linked)	
	ETA for Ambulance to Scene:		
	Air:	2 hr	
	Water/Ground:	3 hr	
	Approved Heli-Spot:		
	Lat:	H5 48° 12.1624' N	
	Long:	120° 35.4476' W	

BRANCH I	EMS Responders & Capability:	MEDIC 4 Nathan Etherington (DP 36) MEDIC 1 Remington Becker (DP 30) MEDIC 3 Adam Lathrop (DP 22) EMT 2 Aidan Noel (DP 22) EMT 3 James Franklin (DP 26)	360-969-1251 360-903-8612 425-531-0469 206-458-0103 253-312-1374
	Equipment Available on Scene:	ALS Kit, Monitor/Defib, O2	
	Medical Emergency Channel:	Command 7,8,9,10 (Linked)	
	ETA for Ambulance to Scene:		
	Air:	2 hr	
	Water/Ground:	3 hr	
	Approved Heli-Spots:		
	H1 48° 10.813' N 120° 31.925' W	H11 48° 14.492' N 120° 35.922' W	H15 48° 08.754' N 120° 29.813' W
	H10 48° 14.099' N 120° 36.782' W	H12 48° 13.381' N 120° 35.919' W	H16 48° 07.744' N 120° 29.541' W

BRANCH II	EMS Responders & Capability:	REMS 2 Brayden Kirk + 3 (DIV D) Kevin Smith MEDL/EMPF (Stehekin FOB)	509-264-8203 509-710-0239
	Equipment Available on Scene:		
	Medical Emergency Channel:	Command 7,8,9,10,11 (Linked)	
	ETA for Ambulance to Scene:		
	Air:	2 hr	
	Ground:	3 hr	
	Approved Heli-Spot:	NA	
	Lat:	NA	
	Long:	NA	

MEDICAL PLAN (206 WF)

BRANCH V	EMS Responders & Capability:	MEDIC 2 Joel Bower (CONTINGENCY) 360-461-7390 MEDIC 5 Brian Linacre (CONTINGENCY) 301-781-7990 REMS 1 Caitlin Lucia +3 (DIV S) 443-699-2512
	Equipment Available on Scene:	ALS Kit, Monitor/Defib, O2, Rescue Gear
	Medical Emergency Channel:	Command 7,8,9,10,11 (Linked)
	ETA for Ambulance to Scene:	
	Air:	2 hr
	Ground:	3 hr
	Approved Heli-Spot:	NA
	Lat:	H25 47° 59.200' N
Long:	120° 16. 521' W	
TBD	EMS Responders & Capability:	TBD
	Equipment Available on Scene:	
	Medical Emergency Channel:	Command 7,8,9,10,11 (Linked)
	ETA for Ambulance to Scene:	
	Air:	2 hr
	Ground:	3 hr
	Approved Heli-Spot:	NA
	Lat:	NA
Long:	NA	
TBD	EMS Responders & Capability:	TBD
	Equipment Available on Scene:	
	Medical Emergency Channel:	Command 7,8,9,10,11 (Linked)
	ETA for Ambulance to Scene:	
	Air:	2 hr
	Ground:	3 hr
	Approved Heli-Spot:	NA
	Lat:	NA
Long:	NA	
TBD	EMS Responders & Capability:	TBD
	Equipment Available on Scene:	
	Medical Emergency Channel:	Command 7,8,9,10,11 (Linked)
	ETA for Ambulance to Scene:	
	Air:	
	Ground:	
	Approved Heli-Spot:	NA
	Lat:	NA
Long:	NA	
TBD	EMS Responders & Capability:	TBD
	Equipment Available on Scene:	
	Medical Emergency Channel:	Command 7,8,9,10,11 (Linked)
	ETA for Ambulance to Scene:	
	Air:	
	Ground:	
	Approved Heli-Spot:	NA
	Lat:	NA
Long:	NA	

Prepared By (Medical Unit Leader)	Date	Reviewed By (Safety Officer)	Date
Mariann Turley MEDL	06/24/24	Matt Broyles SOFC	06/24/24
Signature: <i>Mariann Turley</i>		Signature: <i>Matt Broyles</i>	

MEDICAL PLAN (ICS 206 WF)

Controlled Unclassified Information//Basic

Medical Incident Report																													
<p>FOR A NON-EMERGENCY INCIDENT, WORK THROUGH CHAIN OF COMMAND TO REPORT AND TRANSPORT INJURED PERSONNEL AS NECESSARY.</p> <p>FOR A MEDICAL EMERGENCY: IDENTIFY ON SCENE INCIDENT COMMANDER BY NAME AND POSITION AND ANNOUNCE "MEDICAL EMERGENCY" TO INITIATE RESPONSE FROM IMT COMMUNICATIONS/DISPATCH.</p>																													
<p>Use the following items to communicate situation to communications/dispatch.</p>																													
<p>1. CONTACT COMMUNICATIONS / DISPATCH (Verify correct frequency prior to starting report) <i>Ex: "Communications, Div. Alpha. Stand-by for Emergency Traffic."</i></p> <p>2. INCIDENT STATUS: Provide incident summary (including number of patients) and command structure. <i>Ex: "Communications, I have a Red priority patient, unconscious, struck by a falling tree. Requesting air ambulance to Forest Road 1 at (Lat./Long.) This will be the Trout Meadow Medical, IC is TFLD Jones. EMT Smith is providing medical care."</i></p>																													
Severity of Emergency / Transport Priority	<input type="checkbox"/> RED / PRIORITY 1 Life or limb threatening injury or illness. Evacuation need is IMMEDIATE <i>Ex: Unconscious, difficulty breathing, bleeding severely, 2° - 3° burns more than 4 palm sizes, heat stroke, disoriented.</i> <input type="checkbox"/> YELLOW / PRIORITY 2 Serious Injury or illness. Evacuation may be DELAYED if necessary. <i>Ex: Significant trauma, unable to walk, 2° - 3° burns not more than 1-3 palm sizes.</i> <input type="checkbox"/> GREEN / PRIORITY 3 Minor Injury or illness. Non-Emergency transport <i>Ex: Sprains, strains, minor heat-related illness.</i>																												
Nature of Injury or Illness & Mechanism of Injury			<i>Brief Summary of Injury or Illness (Ex: Unconscious, Struck by Falling Tree)</i>																										
Transport Request			<i>Air Ambulance / Short Haul/Hoist Ground Ambulance / Other</i>																										
Patient Location			<i>Descriptive Location & Lat. / Long. (WGS84)</i>																										
Incident Name			<i>Geographic Name + "Medical" (Ex: Trout Meadow Medical)</i>																										
On-Scene Incident Commander			<i>Name of on-scene IC of Incident within an Incident (Ex: TFLD Jones)</i>																										
Patient Care			<i>Name of Care Provider (Ex: EMT Smith)</i>																										
<p>3. INITIAL PATIENT ASSESSMENT: Complete this section for each patient as applicable (start with the most severe patient)</p>																													
<p>Patient Assessment: See IRPG page 106</p>																													
<p>Treatment:</p>																													
<p>4. TRANSPORT PLAN:</p>																													
<p>Evacuation Location (if different): (Descriptive Location (drop point, intersection, etc.) or Lat. / Long.) Patient's ETA to Evacuation Location:</p>																													
<p>Helispot / Extraction Site Size and Hazards:</p>																													
<p>5. ADDITIONAL RESOURCES / EQUIPMENT NEEDS:</p>																													
<p><i>Example: Paramedic/EMT, Crews, Immobilization Devices, AED, Oxygen, Trauma Bag, IV/Fluid(s), Splints, Rope rescue, Wheeled litter, HAZMAT, Extrication</i></p>																													
<p>6. COMMUNICATIONS: Identify State Air/Ground EMS Frequencies and Hospital Contacts as applicable</p> <table border="1" style="width: 100%; border-collapse: collapse;"> <thead> <tr> <th>Function</th> <th>Channel Name/Number</th> <th>Receive (RX)</th> <th>Tone/NAC *</th> <th>Transmit (TX)</th> <th>Tone/NAC *</th> </tr> </thead> <tbody> <tr> <td>COMMAND</td> <td></td> <td></td> <td></td> <td></td> <td></td> </tr> <tr> <td>AIR-TO-GRND</td> <td></td> <td></td> <td></td> <td></td> <td></td> </tr> <tr> <td>TACTICAL</td> <td></td> <td></td> <td></td> <td></td> <td></td> </tr> </tbody> </table>						Function	Channel Name/Number	Receive (RX)	Tone/NAC *	Transmit (TX)	Tone/NAC *	COMMAND						AIR-TO-GRND						TACTICAL					
Function	Channel Name/Number	Receive (RX)	Tone/NAC *	Transmit (TX)	Tone/NAC *																								
COMMAND																													
AIR-TO-GRND																													
TACTICAL																													
<p>7. CONTINGENCY: Considerations: If primary options fail, what actions can be implemented in conjunction with primary evacuation method? Be thinking ahead.</p>																													
<p>8. ADDITIONAL INFORMATION: Updates/Changes, etc.</p>																													
<p>REMEMBER: Confirm ETA's of resources ordered. Act according to your level of training. Be Alert. Keep Calm. Think Clearly. Act Decisively.</p>																													