

FRIDAY



JUNE 28, 2024

OPERATION PERIOD

Day: 0700 - 2100

COMMUNICATIONS 24-HOUR  
EMERGENCY NUMBER

(208) 891-7948

PIONEER CHARGE CODES

USFS: PN RZ79 (1522)

DOI: RZ79

WA DNR: 221-LDW

SEND PHOTOS TO:

2024.pioneer@firenet.gov



Maps, IAP,  
Finance / Eval.



# PIONEER INCIDENT ACTION PLAN

Pioneer

WA-SES-000173



Notes

*Corrected*

	Ground	Air
FS:		
DNR:		
OSC:		
FSAA:		
DNR AA:		

<b>INCIDENT OBJECTIVES</b>	1. Incident Name <b>PIONEER</b>	2. Date Prepared <b>06/27/2024</b>	3. Time <b>1900</b>
----------------------------	------------------------------------	---------------------------------------	------------------------

4. Operational Period  
**Day Operations: 0700-2100**

**Strategic Framework:**

The Pioneer Fire is a full suppression fire utilizing strategies and tactics that provide the highest likelihood of success while mitigating risks to the responders and public. Extreme terrain prevents direct attack. Indirect lines are being identified and established that reduces risk to responders while protecting identified values including private and federal infrastructure and recreational values.

**Management Objectives:**

- Ensure the safety and well-being of responders and the public by making timely risk-informed decisions that align with values at risk.
- Protect private and federal infrastructure and recreational values.
- Foster relationships with local cooperators and the public by providing coordinated, accurate, and timely information.
- Coordinate suppression activities with READ's to identify and mitigate current and future impacts to the landscape and resources.
- Treat each other with dignity and respect and act in a professional manner on the fire and in the communities.
- Manage cost commensurate with values at risk by coordinating with the Agency Administrators and Incident Business Advisors.

**Operational Objectives:**

- Implement an effective suppression strategy utilizing direct attack where and when appropriate to protect values at risk. When fire behavior, terrain, or safety concerns prohibit direct attack, utilize other suppression tactics such as indirect and point protection as appropriate to reduce risk to responders. Take advantage of natural features such as breaks in fuels, topographic features, or changes in weather.
- Establish indirect control lines with the highest probability of success which prevent fire spread into populated areas.
- Communicate with local law enforcement officials to ensure current and potential evacuations are coordinated.

6. Weather Forecast for Period

7. General Safety Message

8. Attachments (mark if attached)

X	Organization List - ICS 203	X	Medical 206WF - 8 Line	X	Finance Message
X	Div. Assignment Lists - ICS 204	X	Safety Message	X	Dutch Creek Protocol
X	Communications Plan - ICS 205		LCES - ICS 215A	X	Phone List
X	Medical Plan - ICS 206	X	Weather Forecast	X	Incident Map(s)
X	Air Operation Summary - ICS 220	X	Fire Behavior	X	Unit Log

Prepared by Planning Section Chief

*Mike Caspore*

Approved by Incident Commander

*Nathan Jensen*

ORGANIZATION ASSIGNMENT LIST	
1. Incident Name <b>PIONEER</b>	
2. Date Prepared <b>JUNE 27, 2024</b>	3. Time Prepared <b>1800</b>
4. Operational Period <b>JUNE 28, 2024 0700 – 2100</b>	
5. Incident Commander and Staff	
Position	Name
Incident Commander	Nate LeFevre
Incident Commander (T)	Steve North
Deputy	Chris Orr
Safety Officer	Matt Broyles / Eric Brown
Information Officer	Liv Stecker
Liaison	Shawn Christianson / Greg Brody (Stehekin) / Mark Suba / Rhonda Marchand (T)
Human Resources	Margaret Dietrich
6. Agency Representatives	
Agency	Name
USFS Oka/Wen Agency Admin	Kari Grover-Wier
USFS Oka/Wen Agency Admin (T)	Paul Willard
DNR Agency Administrator	Larry Leach
DNR Deputy Agency Administrator	Wyatt Leighton
NPS Agency Administrator	Don Striker
NPS Agency Representative	John Goss
NPS FMO	Matt Ellis
READ Liaison	Courtney Rowe
7. Planning Section	
Plans Section Chief	Mike Crawford
Deputy	Debbie Plummer (T)
Resource Unit	Gary Duranceau/ Cari Richardson
Status Check-in	Katelyn Roeder / Charlie Hardy
Situation Unit	Shannon Theall / Ray Moeckel (T)
GIS Specialists	Aleksandar Dozic / Olivia Hughes (T)
Demob Unit	Jay Lord
Documentation Unit	Chris Oelschlager
Incident Meteorologist	Todd Carter
Fire Behavior Analyst	Steve Ziel / Michael Bowden
Long Term Fire Analyst	Brett Smith (Virtual)
8. Logistics Section	
Logistics Section Chief	Franklin Vaughan / Larry Falcon (T)
Deputy	Max Yager (Stehekin) / Cindy Wedekind (Lucerne)
Facilities	Jan Robbins / Kelsy Lipp / Peter Drott (T) / Mike Prevost (T) / Randy Rector (T)

Base Camp Manager	Dave Lefevre/Mac McEntyre (T)
Supply Unit	Vicki Cunningham
IT Specialist	Mike Gascon / Chad Funnemark / Ben Smith (T)
Receiving Distribution	Michael Hanson / Karl Peterson (T) / David Richards (Stehekin)
Ordering Manager	Noe Reyes
Ground Support Unit	Casey Glade / Joe Keady
Communication Unit	Seth Baumgartner / Michael Merrick (T)
Communication Tech.	Keith Schaff / Kevin Judd
Food Unit	Kristy Naughton / John Cody/Phil Moller/Shawna Monroe (T)
Security Manager	Michael Fakier
Medical Unit	Mariann Turley / James Brown / Kevin Smith (T) (Stehekin) / Ben Meacham
9. Operations Section	
OPS Section Chief - Lead	Jon Larson / Jesse Kiene (T)
OPS Section Chief - Planning	Rob Poyner (T)
OPS Section Chief – Field	Seth Merritt
a. Branch I	
Branch Director	Thom Taylor
Division A	Seth Missal / James Fields (T)
Division Z	Travis Baker/Frank Heilman (T)
b. Branch II	
Branch Director	Thom Taylor
Division D	Ben Lippert / Silas Baffa (T)
c. Branch IV	
Branch Director	Roger Goldman
Division H	Matt Ziegler
c. Branch V	
Branch Director	Alfred Wiehl
Division S	Linda Gibson / Holt Jaeger (T)
Division Contingency / Roads	Jennifer Harris/Eric Metzger (T)
Division Boat	Nate Crawford / Seth Ellis (T)
Division Staging	Jon Merager
d. Air Operations Branch	
AOB Director – Planning	Mark Hocken
AOB Director – Field	Ted Hass
10. Finance Section	
Finance Section Chief	Patty Westgate / Lori Bailey (T)
Time Unit	Beverly Hollars / Heather Wall
Procurement	Audrey Mainwaring
Comp/Claims	Kelly Lorenz (Virtual)
Cost Unit	Dede Domingos
Prepared by Cari Richardson, RESL	



# Fire Weather Forecast



**FORECAST NO:** 16  
**PREDICTION FOR:** 24 Hr Shift  
**SHIFT DATE:** Thursday 6/28/2024  
**TIME AND DATE ISSUED:** 6/27/2024 1900 hrs

**INCIDENT:** Pioneer Fire  
**SIGNED:** *Todd Carter*  
Incident Meteorologist (IMET)

**Discussion:**

Weak high pressure will build over the area Friday switching winds from northwest to southeast. Winds will generally be less than 10 mph except for the normal late afternoon evening diurnal northwest surge downlake. It will be drier and warmer Friday but still a potential of sprinkles on highest ridges. A couple of weather systems from the Pacific will increase clouds and potential for light rain showers Saturday into Sunday. It will be a little cooler and breezy Sunday and Monday.

**WEATHER FORECAST FOR TODAY:**

**SKY/WEATHER:** Partly cloudy becoming mostly cloudy.. Cumulus buildup over nearby ridges in the afternoon with sprinkles.

**MAX TEMPERATURE:** 74 to 79.

**MIN RH:** 28 to 35 percent.

**20 FT WINDS:**

**Lower Valleys:** Northwest 5 to 10 mph gusts to 15 mph becoming southeast 5 to 10 mph in the afternoon.

**Mid-slopes and Ridges:** Northwest 5 to 10 mph gusts to 20 mph becoming southeast 5 to 10 gusts to 15 mph in the afternoon.

**HAINES INDEX:** 2 Very Low: Stability-1 & Moisture-1      **TRANSPORT WINDS:** SE 9 mph.

**INVERSION:** 1000 ft inversion starting to lift at 0700 with a max of 5000 ft by 1300.

**TONIGHT:**

**SKY/WEATHER:** Partly cloudy.

**MIN TEMPERATURE:** 51 to 56.

**MAX RH:** 60 to 70 percent.

**20 FT WINDS:**

**Valleys/Lower Slopes:** Becoming Northwest down lake 4 to 7 mph gusts to 15 mph early evening.

**Mid-Slopes and Ridges:** South 5 to 10 mph..

**INVERSION:** Developing after 2100 hrs to near 1000 ft.

**SATURDAY:**

**SKY/WEATHER:** Mostly cloudy with a chance of rain.

**MAX TEMPERATURE:** High 74 to 79.

**MIN RH:** 35 to 43 percent.

**20 FT WINDS:**

**Lower Valleys:** South to Southeast 5 to 10 mph gusts to 15 mph.

**Mid-slopes and Ridges:** Southwest 10 mph gusts to 20 mph.

**HAINES INDEX:** 2 Very Low.

**TRANSPORT WINDS:** S 10 mph.

**Boating concerns Friday:** Southeast winds to 10 mph expected along all of Lake Chelan.

**Aviation concerns Friday:** Warming temperatures above 20C at 4000 feet for load calcs. Winds coming from a different direction.

**Change your weather information Contact INFO:**

Weather observations can now be texted to 509-319-0474 or emailed to [todd.carter@noaa.gov](mailto:todd.carter@noaa.gov)

## Fire Behavior Forecast # 17

**Name of Incident:**

**Pioneer**

**Administrative Unit:**

SE Region DNR / Okanogan-Wenatchee NF

**Date & Time Issued:** June 27, 2024 @ 2000

**Operational Period:** DAY 06/28/2024

**FBAN:** Steve Ziel

**Signed:** /z/

**Assumptions:** A progressive warming and drying trend will result in increased fire behavior in the coming days. Current fuel conditions will support limited fire spread until sufficient drying occurs. Potential fire behavior is being inhibited by fuel condition and discontinuity. Expect limited burning conditions in exposed fine fuels between 1300-1700. Persistent burning and heat retention in heavy fuels will serve as ignition sources as drying occurs. Live fuels are not contributing to fire spread (yet). Lake effect winds (up or down lake) dominate lower and mid slopes; the fire areas is on a SW aspect with steep side drainages that provide upslope winds. Wind/slope alignment and/or lake wind will influence drying rate and fire spread. Fine fuels will dry rapidly with lower humidity. Expect SW down lake winds today.

### Weather Summary

\*See attached Fire Weather Forecast

### Fire Behavior Summary

**Fuels in the fire area** are composed of a mosaic of *Timber Litter, Grass, Timber with Understory, and Grass/Shrub* models. The fire is burning in the Rex Creek (2001) fire footprint. Primary tree species include mixed sizes and densities of Douglas Fir and Ponderosa Pine. Local timber litter is compact to fluffy. Brush and understory species include ceanothus, hardwoods, and dog-hair conifer reproduction. Large snags and heavy downed fuel loadings are common throughout all areas. Live woody and herbaceous fuels are seasonally moist, and not contributing to rates of spread; grasses are partially to fully cured. Fuel conditions change by aspect, previous fire history, and soil moisture. Low crown base height (ladder fuels) is present in most of the timbered areas.

**Today's potential fire behavior** may include pockets/areas of smoldering, creeping, and limited spread with wind/slope alignment. Primary spread mechanism has been backing with rollout, flanking, and limited head fire spread. Heavy fuels are retaining heat and will serve as ignition sources as fine fuels dry from wind and low RH during the burn period. Early season fuel condition is inhibiting full fire behavior potential - live fuels are moist, some grasses are still curing. It is important to assess moisture penetration in surface fuels (scuff test) to determine rate of drying.

\* FFM= 6%-8%, 1000hr. moisture=12%, Woody fuels 170%, Probability of Ignition-40-60%, Max Spotting < 0.2

Fuel Type	Rate of Spread (CH/HR = FPM)	Flame Length Feet	Backing ROS FPM	35 MPH Gust - Ridgetop FPM
... If your work area includes -				
GR2 - Moderate load grass/shrub	2 - 3	<2	< 1	2 - 3
SH2 - Moderate load shrub	1 - 2	2	< 1	5-7
TU5 - High load Timber w/ Understory	8 - 9	6-7	< 1	20-25
TL8 - Long needle timber litter	8 - 9	3-4	< 1	20-25

### Specific Assignments:

**Div. A** - Expect backing, and limited flanking in headwaters of Meadow Cr. And Cascade Cr. Heavy fuels will continue to consume.

**Div. Z** - Ragged edge fire edge on north side of Prince Cr will continue to smolder, flank, and back with rollout.

**Other Divisions** - Should not be affected by fire activity during the burn period. Monitor smoke direction and amount. Assess fuels.

\*IA - Ensure good size-up before engaging. Assess fire spread potential based on fuel, weather, topography and values at risk.

**Air Operations:** SE ridgetop wind gusts to 15 mph by afternoon. Monitor ridge top wind transitions, and down lake winds 10 mph.

### Safety

Expect warming and drying to occur over the next several days. Potential fire behavior needs to be anticipated *throughout* the day. Base all actions on current and expected behavior of the fire. Fire season has just started(!!!!) ....we have the whole summer to observe fuel, weather, and topography interactions.

Subtle changes in the weather pattern today ..... Watchout Situation #15 - Wind increases and/or changes direction. #4 - Unfamiliar with weather and local factors influencing fire behavior.

\* Today's Fire Behavior Forecast contains 670 words written for your situational awareness.

<b>DIVISION ASSIGNMENT LIST</b>			1. Branch <b>I</b>	2. Division / Group <b>A</b>				
3. Incident Name <b>Pioneer</b>			4. Operational Period Date: <b>06/28/2024</b> Time: <b>0700-2100</b>					
5. Operations Personnel								
Operations Chief	Jon Larson / Jesse Kiene (T)		Division / Group Supervisor	Seth Missal / James Fields (T)				
Operations Chief (Plans)	Rob Poyner (T)		Branch Director	Thom Taylor				
Safety Officer	Matt Broyles / Eric Brown		Air Attack Supervisor	Chad Bergren				
6. Resources Assigned this Period								
	Strike Team / Task Force / Resource Designator	Leader	Number Persons	Tentative Last Work Day	Drop Off Pt / Time	Pick Up Pt / Time		
1.	O-179 TFLD	Charlie Humbert	1	7/9				
2.	O-180 TFLD	Joe Landburg	1	7/10				
3.	O-266 TFLD (T)	Frank Bojorquez	1	7/12				
4.								
5.	C-9 CRW1 Zigzag IHC	Sandra Sperry	25	6/28				
6.	**C-13 CRW1 Vale IHC	Glen Heitz	20	7/4				
7.	O-187 WFM1 Grass Lake	William Johnson	9	7/7				
8.	O-127 FMOD Rainstorm	Kendall Cain	2	7/1				
9.	O-128 FMOD Rainstorm	Mike Lind	2	7/1				
10.	O-129 FELB	Mel Tenneson	1	7/1				
11.								
12.	O-67 MEDIC 3	Adam Lathrop	1	7/4				
13.	O-137 EMT 3	James Franklin	1	7/1				
14.	O-153 EMT 2	Aiden Noel	1	7/1				
15.								
16.	O-174.52 SOFR	George Libercajt	1	7/7				
17.	O-175 SOFR	Melissa Moore	1	7/4				
18.								
19.	0142 SOFZ	Kelly Jensen	1	7/1	From Delta			
20.								
7. Control Operations <b>Task: Contain fire spread to the northwest where terrain and fuels allow for highest probability of success. Assess fire perimeter progression to the north and west at higher elevations. Implement point protection efforts on federal &amp; private infrastructure.</b> <b>Purpose: To slow fire progression, provide time for suppression tactics, and continue to prep around critical values.</b> <b>End state: Minimize fire impacts to critical values including private inholdings and Forest Service infrastructure.</b>								
8. Special Instructions								
<ul style="list-style-type: none"> <li>In large or long term spike camps use helicopters, boats, or pack stock to deliver portable backcountry latrines and remove human waste if necessary. If camp does not have adequate pack, boat, or air support for human waste management, establish community latrines well away from water sources and common areas. Use human waste bags, if necessary.</li> <li>Minimize ground disturbance on the Moore Point and Meadow Creek alluvial fans in order to protect sensitive resources.</li> <li>Ensure hazard mitigations and IWI protocols are in place before taking action.</li> <li>Hose used from Pioneer Creek to Moore Pt: contaminated with invasive plants. Do not reuse. Backhaul to Moore Pt DP22 and store in "infested hose" area at Moore Pt until decotaminated.</li> <li>** Denotes available for Initial Attack</li> </ul>								
9. Division / Group Communication Summary								
Function	Frequency	System	Channel	Function	Frequency	System	Channel	
Command Repeater		See Comm Plan		Command		See Comm. Plan		
TAC				Air To Ground		See Comm. Plan		
Prepared by (Resource Unit Leader): Name: Gary Duranceau			Approved by (Planning Section Chief) Name: Mike Crawford		Date	6/27/24	Time	1900

<b>DIVISION ASSIGNMENT LIST</b>				1. Branch <b>I</b>		2. Division / Group <b>Z</b>	
3. Incident Name <b>Pioneer</b>				4. Operational Period Date: <b>06/28/2024</b> Time: <b>0700-2100</b>			
5. Operations Personnel							
Operations Chief		Jon Larson / Jesse Kiene (T)		Division / Group Supervisor		Travis Baker / Frank Heilman (T)	
Operations Chief (Plans)		Rob Poyner (T)		Branch Director		Thom Taylor	
Safety Officer		Matt Broyles / Eric Brown		Air Attack Supervisor		Chad Bergren	
6. Resources Assigned this Period							
	Strike Team / Task Force / Resource Designator	Leader	Number Persons	Tentative Last Work Day	Drop Off Pt / Time	Pick Up Pt / Time	
1.	<b>O-177 TFLD</b>	<b>Brett Matthews</b>	<b>1</b>	<b>7/10</b>			
2.							
3.	<b>O-182 WFM1 Selway</b>	<b>JT Sohr</b>	<b>14</b>	<b>7/8</b>			
4.							
5.	<b>A-78 UR-31</b>	<b>Marshal Wallace</b>	<b>3</b>	<b>7/9</b>			
6.							
7.	<b>O-51 MEDIC 1</b>	<b>Remington Becker</b>	<b>1</b>	<b>7/3</b>			
8.							
9.	<b>O-174.52 SOFR</b>	<b>George Libercajt</b>	<b>1</b>	<b>7/7</b>			
10.							
11.							
12.							
13.							
14.							
15.							
7. Control Operations							
<b>Task:</b> Contain fire spread to the southeast where terrain and fuels allow for high probability of success. Assess fire perimeter progression to the east/southeast at higher elevations.							
<b>Purpose:</b> To slow fire progression, provide time for suppression tactics, and continue to prep around critical values.							
<b>End state:</b> Minimize fire impacts to critical values including private inholdings and Forest Service infrastructure							
8. Special Instructions							
<ul style="list-style-type: none"> <li>In large or long term spike camps use helicopters, boats, or pack stock to deliver portable backcountry latrines and remove human waste if necessary. If camp does not have adequate pack, boat, or air support for human waste management, establish community latrines well away from water sources and common areas. Use human waste bags, if necessary.</li> <li>Ensure hazard mitigations and IVI protocols are in place before taking action.</li> <li>Hose used from Pioneer Creek to Moore Pt: contaminated with invasive plants. Do not reuse. Backhaul to Moore Pt DP22 and store in "infested hose" area at Moore Pt until decontaminated.</li> </ul>							
9. Division / Group Communication Summary							
Function	Frequency	System	Channel	Function	Frequency	System	Channel
Command Repeater	See Comm Plan			Command	See Comm. Plan		
TAC				Air To Ground	See Comm. Plan		
Prepared by (Resource Unit Leader): Name: Gary Duranceau			Approved by (Planning Section Chief) Name: Mike Crawford			Date 6/27/24	Time 1900

DIVISION ASSIGNMENT LIST			1. Branch	2. Division / Group		
			<b>II</b>	<b>D</b>	<b>Page 1 of 2</b>	
3. Incident Name <b>Pioneer</b>			4. Operational Period Date: <b>06/28/2024</b> Time: <b>0700-2100</b>			
5. Operations Personnel						
Operations Chief	Jon Larson / Jesse Kiene (T)		Division / Group Supervisor	Ben Lippert / Silas Baffa (T)		
Operations Chief (Plans)	Rob Poyner (T)		Branch Director	Thom Taylor		
Safety Officer	Matt Broyles / Eric Brown		Air Attack Supervisor	Chad Bergren		
6. Resources Assigned this Period						
	Strike Team / Task Force / Resource Designator	Leader	Number Persons	Tentative Last Work Day	Drop Off Pt / Time	Pick Up Pt / Time
1.	O-183 TFLD	Harley Hamman	1	7/6	Stehekin	Stehekin
2.	O-251 TFLD	Aaron Merritt	1	7/3	Stehekin	Stehekin
3.						
4.	C-11 CRW1 Redmond IHC	Dave Varon	20	6/28		
5.						
6.	O-122 HECM	Nick DePanlo	4	7/1	Stehekin	Stehekin
7.						
8.	O-147 SMOD LNP CREW 76	Sara Martinez	7	7/3	Stehekin	Stehekin
9.	O-148 SMOD HVP CREW 1	Brent Webb	10	7/3	Stehekin	Stehekin
10.	O-278 SMOD Crew 84	Geoff Hibbs	3	7/10	Stehekin	Stehekin
11.	**O-218 WFM2 Olympic	Jonah Gray	10	7/6	Stehekin	Stehekin
12.						
13.	O-184 FELB	Marty Cozart	1	7/6	Stehekin	Stehekin
14.	O-186 FMOD Kintner Timber	Cory Kintner	2	7/6	Stehekin	Stehekin
15.	O-185 FMOD Brothers Fire	Levi Merritt	2	7/6	Stehekin	Stehekin
16.						
17.						
18.						
19.						
7. Control Operations						
<b>Task:</b> Continue construction of contingency lines around the community of Stehekin. Look for opportunities to contain fire spread in and around Flick Creek area where terrain and fuels allow for highest probability of success.						
<b>Purpose:</b> Minimize fire impacts to critical values including private inholdings, the community of Stehekin, and Forest Service infrastructure.						
<b>End state:</b> Critical values including private inholdings, the community of Stehekin, and Forest Service infrastructure are not impacted by the Pioneer fire, while minimizing fire impacts and acres burned utilizing historic wildfire control features and natural barriers.						
8. Special Instructions						
<ul style="list-style-type: none"> <li>In large or long term spike camps use helicopters, boats, or pack stock to deliver portable backcountry latrines and remove human waste if necessary. If camp does not have adequate pack, boat, or air support for human waste management, establish community latrines well away from water sources and common areas. Use human waste bags, if necessary.</li> <li>All operational personnel working on USFS lands will need to conduct a thorough inspection for invasive species seeds on boots including laces, clothing, and gear prior to entering NPS lands.</li> <li>Only fresh (direct from the cache) hose should be utilized on NPS lands to prevent the transport of invasive species seeds.</li> <li>Hose used on USFS lands should not be used on NPS lands and hose used on NPS lands should not be used on USFS lands to prevent the spread of invasives species seeds.</li> <li>Cargo loads being transported onto NPS lands should be inspected for invasive weed seed prior to flight.</li> <li>Ensure hazard mitigations and IVI protocols are in place before taking action.</li> <li>NPS Resource Avoidance Area Flagging is yellow with red polka dots. Contact NPS READs before working in areas where this flagging is present.</li> <li>** Denotes available for Initial Attack</li> </ul>						
9. Division / Group Communication Summary						
Function	Frequency	System	Channel	Function	Frequency	System
Command Repeater		See Comm Plan		Command		See Comm. Plan
TAC				Air To Ground		See Comm. Plan
Prepared by (Resource Unit Leader): Name: Gary Duranceau			Approved by (Planning Section Chief) Name: Mike Crawford		Date	Time
					6/27/24	1900



<b>DIVISION ASSIGNMENT LIST</b>		1. Branch <b>II</b>	2. Division / Group <b>D</b>		<b>Page 2 of 2</b>		
3. Incident Name <b>Pioneer</b>		4. Operational Period Date: <b>06/28/2024</b> Time: <b>0700-2100</b>					
5. Operations Personnel							
Operations Chief	Jon Larson / Jesse Kiene (T)		Division / Group Supervisor	Ben Lippert / Silas Baffa (T)			
Operations Chief (Plans)	Rob Poyner (T)		Branch Director	Thom Taylor			
Safety Officer	Matt Broyles / Eric Brown		Air Attack Supervisor	Chad Bergren			
6. Resources Assigned this Period							
Strike Team / Task Force / Resource Designator	Leader	Number Persons	Tentative Last Work Day	Drop Off Pt / Time	Pick Up Pt / Time		
20.	O-125 READ	Cedar Drake	1	7/1	Stehekin	Stehekin	
21.	O-166 REAF	Jordan Spaak	1	7/6	Stehekin	Stehekin	
22.	O-235 REAF	Cade Simpson	1	7/7	Stehekin	Stehekin	
23.	O-167 ARCH	Jason Wright	1	7/5	7/12 Stehekin	Stehekin	
24.	O-168 ARCH	Ernest Wingate	1	7/6	Stehekin	Stehekin	
25.							
26.	O-165 REMS 2	Brayden Kirk	4	7/10	Stehekin	Stehekin	
27.	O-174.79 MEDL (T)	Kevin Smith	1	7/2	Stehekin	Stehekin	
28.							
29.	O-170 THSP	Tanya Neider	1	7/3			
30.							
31.	<del>O-142 SOF2</del>	<del>Kelly Jensen</del>	<del>1</del>	<del>7/1</del>	<del>Stehekin</del>	<del>Stehekin</del>	
32.	O-174.88 SOFR	Leo Engleson	1	7/7	Stehekin	Stehekin	
33.							
34.	E-119 Driver	Stephen Bouche	1	7/2			
35.							
36.							
37.							
38.							
7. Control Operations							
<p><b>Task:</b> Continue construction of contingency lines around the community of Stehekin. Look for opportunities to contain fire spread in and around Flick Creek area where terrain and fuels allow for highest probability of success.</p> <p><b>Purpose:</b> Minimize fire impacts to critical values including private inholdings, the community of Stehekin, and Forest Service infrastructure.</p> <p><b>End state:</b> Critical values including private inholdings, the community of Stehekin, and Forest Service infrastructure are not impacted by the Pioneer fire, while minimizing fire impacts and acres burned utilizing historic wildfire control features and natural barriers.</p>							
8. Special Instructions							
<ul style="list-style-type: none"> <li>In large or long term spike camps use helicopters, boats, or pack stock to deliver portable backcountry latrines and remove human waste if necessary. If camp does not have adequate pack, boat, or air support for human waste management, establish community latrines well away from water sources and common areas. Use human waste bags, if necessary.</li> <li>All operational personnel working on USFS lands will need to conduct a thorough inspection for invasive species seeds on boots including laces, clothing, and gear prior to entering NPS lands.</li> <li>Only fresh (direct from the cache) hose should be utilized on NPS lands to prevent the transport of invasive species seeds.</li> <li>Hose used on USFS lands should not be used on NPS lands and hose used on NPS lands should not be used on USFS lands to prevent the spread of invasives species seeds.</li> <li>Cargo loads being transported onto NPS lands should be inspected for invasive weed seed prior to flight.</li> <li>Ensure hazard mitigations and IWI protocols are in place before taking action.</li> <li>NPS Resource Avoidance Area Flagging is yellow with red polka dots. Contact NPS READs before working in areas where this flagging is present.</li> <li>** Denotes available for Initial Attack.</li> </ul>							
9. Division / Group Communication Summary							
Function	Frequency	System	Channel	Function	Frequency	System	Channel
Command Repeater	See Comm Plan			Command	See Comm. Plan		
TAC				Air To Ground	See Comm. Plan		
Prepared by (Resource Unit Leader): Name: Gary Duranceau			Approved by (Planning Section Chief) Name: Mike Crawford		Date	Time	
					6/27/24	1900	

<b>DIVISION ASSIGNMENT LIST</b>			1. Branch <b>IV</b>	2. Division / Group <b>H</b>		
3. Incident Name <b>Pioneer</b>			4. Operational Period Date: <b>06/28/2024</b> Time: <b>0700-2100</b>			
5. Operations Personnel						
Operations Chief	Jon Larson / Jesse Kiene (T)		Division / Group Supervisor	Matt Ziegler		
Operations Chief (Plans)	Rob Poyner (T)		Branch Director	Roger Goldman		
Safety Officer	Matt Broyles / Eric Brown		Air Attack Supervisor	Chad Bergren		
6. Resources Assigned this Period						
	Strike Team / Task Force / Resource Designator	Leader	Number Persons	Tentative Last Work Day	Drop Off Pt / Time	Pick Up Pt / Time
1.	O-272 TFLD	Steve Abrams	1	7/11		
2.						
3.	O-267 SOFR	Tom Talbot	1	7/10		
4.						
5.						
6.						
7.						
8.						
9.						
10.						
11.						
12.						
13.						
14.						
15.						
16.						
17.						
18.						
19.						
20.						
7. Control Operations <b>Task:</b> Complete a comprehensive inventory of critical values, proposed control line options to protect those values and the risk to responders associated with those actions in SA4. <b>Purpose:</b> To analyze the strategy as probability vs success. <b>End state:</b> A long term durable strategic plan for the Pioneer Fire.						
8. Special Instructions <ul style="list-style-type: none"> <li>In large or long term spike camps use helicopters, boats, or pack stock to deliver portable backcountry latrines and remove human waste if necessary. If camp does not have adequate pack, boat, or air support for human waste management, establish community latrines well away from water sources and common areas. Use human waste bags, if necessary.</li> <li>Ensure hazard mitigations and IWI protocols are in place before taking action.</li> <li>Draft sites must be reviewed by READ.</li> </ul>						
9. Division / Group Communication Summary						
Function	Frequency	System	Channel	Function	Frequency	System Channel
Command Repeater		See Comm Plan		Command		See Comm. Plan
TAC				Air To Ground		See Comm. Plan
Prepared by (Resource Unit Leader): Name: Gary Duranceau			Approved by (Planning Section Chief) Name: Mike Crawford		Date	Time
					6/27/24	1900

DIVISION ASSIGNMENT LIST		1. Branch <b>V</b>		2. Division / Group <b>S</b>		Page 1 of 2	
3. Incident Name <b>Pioneer</b>		4. Operational Period Date: <b>06/28/2024</b> Time: <b>0700-2100</b>					
5. Operations Personnel							
Operations Chief	Jon Larson / Jesse Kiene (T)		Division / Group Supervisor		Linda Gibson / Holt Jaeger (T)		
Operations Chief (Plans)	Rob Poyner (T)		Branch Director		Alfred Wiehl		
Safety Officer	Matt Broyles / Eric Brown		Air Attack Supervisor		Chad Bergren		
6. Resources Assigned this Period							
Strike Team / Task Force / Resource Designator	Leader	Number Persons	Tentative Last Work Day	Drop Off Pt / Time	Pick Up Pt / Time		
1. O-110 TFLD	Shane Clifton	1	6/30	Safe Harbor	Safe Harbor		
2. O-111 TFLD (T)	Lars Olson	1	6/30	Camp 4 Spike	Camp 4 Spike		
3. O-112 TFLD	David Ortlund	1	7/1	Camp 4 Spike	Camp 4 Spike		
4. O-113 TFLD (T)	Gavin Young	1	7/1	Camp 4 Spike	Camp 4 Spike		
5. O-126 FMOD Fire Contracting Serv.	Ethan Wilson	2	7/1	Camp 4 Spike	Camp 4 Spike		
6. O-130 FELB	Rob Winkler	1	7/2	Camp 4 Spike	Camp 4 Spike		
7.							
8. **C-10 CR2I Methow Valley IA	Benjamin Boucher	23	6/29	Safe Harbor	Safe Harbor		
9. **C-18 CR2I Colville	Jacob Morse	21	7/6	Camp 4 Spike	Camp 4 Spike		
10.							
11. E-78 WTS2 King Hydroseeding	Don Warden	1	7/10	Camp 4 Spike	Camp 4 Spike		
12. <i>E73 WTS2 Strand</i>	<i>Wade Strand</i>	<i>1</i>	<i>7/11</i>	<i>Camp 4 Spike</i>	<i>Camp 4 Spike</i>		
13. E-101 SKG2 NW Diesel Dudes	John Lotze	2	7/3	Camp 4 Spike	Camp 4 Spike		
14. E-102 SKG2 Dukes Equipment	Justin Durston	2	7/1	ICP	ICP		
15. E-103 MBM2 Marcon Timber	Dave Landes	2	7/1	ICP	ICP		
16. E-104 MBM2 Havillah Logging	Albert Johnson	2	7/1	ICP	ICP		
17. E-105 MBM2 Justin Pitts	Justin Pitts	2	7/1	ICP	ICP		
18.							
19. E-118 ENG6 Little Pend Oreille	Thomas Boggs	3	7/1	Camp 4 Spike	Camp 4 Spike		
20. E-118 HEQB	Dillon Bigler	1	7/1	Camp 4 Spike	Camp 4 Spike		
21. E-118 HEQB (T)	Pedro Gomez	1	7/1	Camp 4 Spike	Camp 4 Spike		
22.							
23.							
7. Control Operations <b>Task:</b> Implementation of control from South Navaree CG to Lake Chelan. Increase ingress and egress to the fire area. <b>Purpose:</b> To establish a barrier to fire to the east of Safety Harbor Creek. <b>End state:</b> Control line anchored from South Navaree CG to Lake Chelan.							
8. Special Instructions Ensure hazard mitigations and IWI protocols are in place before taking action. <b>** Denotes available for Initial Attack</b>							
9. Division / Group Communication Summary							
Function	Frequency	System	Channel	Function	Frequency	System	Channel
Command Repeater	See Comm Plan			Command	See Comm. Plan		
TAC				Air To Ground	See Comm. Plan		
Prepared by (Resource Unit Leader): Name: Gary Duranceau			Approved by (Planning Section Chief): Name: Mike Crawford			Date: 6/27/24	Time: 1900

<b>DIVISION ASSIGNMENT LIST</b>			1. Branch <b>V</b>	2. Division / Group <b>S</b>	<b>Page 2 of 2</b>			
3. Incident Name <b>Pioneer</b>			4. Operational Period Date: <b>06/28/2024</b> Time: <b>0700-2100</b>					
5. Operations Personnel								
Operations Chief	Jon Larson / Jesse Kiene (T)		Division / Group Supervisor	Linda Gibson / Holt Jaeger (T)				
Operations Chief (Plans)	Rob Poyner (T)		Branch Director	Alfred Wiehl				
Safety Officer	Matt Broyles / Eric Brown		Air Attack Supervisor	Chad Bergren				
6. Resources Assigned this Period								
	Strike Team / Task Force / Resource Designator	Leader	Number Persons	Tentative Last Work Day	Drop Off Pt / Time	Pick Up Pt / Time		
24.	O-75 MEDIC 4	Nathan Etherington	1	6/28	Safe Harbor	Safe Harbor		
25.	O-43 REMS1	Ray Storm	5	7/8	Camp 4 Spike	Camp 4 Spike		
26.								
27.	O-141 SOFR	Kevin Pfister	1	7/2	Camp 4 Spike	Camp 4 Spike		
28.								
29.	E-18 UTV							
30.	E-93 UTV							
31.	E-94 UTV							
32.	E-148 UTV							
33.	E-149 UTV							
34.								
35.								
36.								
37.								
38.								
39.								
40.								
41.								
42.								
43.								
44.								
45.								
46.								
47.								
48.								
7. Control Operations <b>Task:</b> Implementation of control from South Navaree CG to Lake Chelan. Increase ingress and egress to the fire area. <b>Purpose:</b> To establish a barrier to fire to the east of Safety Harbor Creek. <b>End state:</b> Control line anchored from South Navaree CG to Lake Chelan.								
8. Special Instructions Ensure hazard mitigations and IWI protocols are in place before taking action. <b>** Denotes available for Initial Attack</b>								
9. Division / Group Communication Summary								
Function	Frequency	System	Channel	Function	Frequency	System	Channel	
Command Repeater		See Comm Plan		Command		See Comm. Plan		
TAC				Air To Ground		See Comm. Plan		
Prepared by (Resource Unit Leader): Name: Gary Duranceau			Approved by (Planning Section Chief) Name: Mike Crawford		Date	6/27/24	Time	1900

<b>DIVISION ASSIGNMENT LIST</b>				1. Branch <b>V</b>	2. Division / Group <b>Contingency/Roads</b>				<b>Page 1 of 2</b>	
3. Incident Name <b>Pioneer</b>				4. Operational Period Date: <b>06/28/2024</b> Time: <b>0700-2100</b>						
5. Operations Personnel										
Operations Chief		Jon Larson / Jesse Kiene (T)			Division / Group Supervisor		Jennifer Harris / Eric Metzger (T)			
Operations Chief (Plans)		Rob Poyner (T)			Branch Director		Alfred Wiehl			
Safety Officer		Matt Broyles / Eric Brown			Air Attack Supervisor		Chad Bergren			
6. Resources Assigned this Period										
	Strike Team / Task Force / Resource Designator			Leader	Number Persons	Tentative Last Work Day	Drop Off Pt / Time		Pick Up Pt / Time	
1.	O-83 TFLD			Mark Lewis	1	6/29				
2.	O-106 TFLD			Andy Hall	1	6/29				
3.	O-178 TFLD			Andrew Schaffran	1	7/9				
4.	**O-239 TFLD			Kory Garrie	1	7/9				
5.	O-245 TFLD			Noah Daniels	1	7/10				
6.	O-114 TFLD (T)			TJ Whitehall	1	7/1				
7.	O-249 TFLD (T)			Mark Harper	1	7/9				
8.	**O-257 TFLD (T)			Craig McDonald	1	7/9				
9.	O-115 HEQB			Garrett Hanson	1	6/30				
10.	O-241 HEQB			Jason Green	1	7/9				
11.	O-242 HEQB			Travis Parker	1	7/9				
12.	O-243 HEQB			Everardo Santillan	1	7/8				
13.	O-116 HEQB (T)			Tyler Meyer	1	6/30				
14.	O-117 HEQB (T)			Ian Fox	1	6/30				
15.										
16.	**C-19 CR2I Cle Elum RD			Cris Machado	18	7/8				
17.	C-23 C2IA SRV1			Jaime Medrano	23	7/11				
18.										
19.	**E-117 ENG6 Wenatchee River			Nicholas Gonzales	5	7/3				
20.										
21.	E-74 WTS2 MVP Team			Joe Cole	1	6/28				
22.	E-75 WTS2 David Rains			Ron Laymance	1	6/30				
23.	E-83 WTS2 King Hydroseeding			Cosmo Fisher	1	6/28				
24.	E-76 WTS2 Mountain View Wildfire			Wick Fife	1	7/1				
25.	E-156 WTS2 King Hydroseeding			Wes Bodenhamer	1	7/8				
26.										
7. Control Operations										
<p><b>Task:</b> Scout proposed control lines at Oss Peak and Johnson Creek. Assess structures from Deer Point to Mitchel Creek. Implement control lines from H41 to <b>DP50, DP76</b>.</p> <p><b>Purpose:</b> To protect critical values at risk.</p> <p><b>End state:</b> To have established control lines in place that correspond to Pioneer Fire strategic plan.</p>										
8. Special Instructions										
<ul style="list-style-type: none"> <li>• Ensure hazard mitigations and IWI protocols are in place before taking action.</li> <li>• Contingency resources working DIV H: Draft sites must be reviewed by READ.</li> <li>• ** Denotes available for Initial Attack.</li> </ul>										
9. Division / Group Communication Summary										
Function	Frequency	System	Channel	Function	Frequency	System	Channel			
Command Repeater	See Comm Plan			Command	See Comm. Plan					
TAC				Air To Ground	See Comm. Plan					
Prepared by (Resource Unit Leader): Name: Gary Duranceau				Approved by (Planning Section Chief) Name: Mike Crawford			Date	6/27/24	Time	1900

<b>DIVISION ASSIGNMENT LIST</b>			1. Branch <b>V</b>	2. Division / Group <b>Contingency/Roads</b>			<b>Page 2 of 2</b>
3. Incident Name <b>Pioneer</b>			4. Operational Period Date: <b>06/28/2024</b> Time: <b>0700-2100</b>				
5. Operations Personnel							
Operations Chief	Jon Larson / Jesse Kiene (T)		Division / Group Supervisor	Jennifer Harris / Eric Metzger (T)			
Operations Chief (Plans)	Rob Poyner (T)		Branch Director	Alfred Wiehl			
Safety Officer	Matt Broyles / Eric Brown		Air Attack Supervisor	Chad Bergren			
6. Resources Assigned this Period							
	Strike Team / Task Force / Resource Designator	Leader	Number Persons	Tentative Last Work Day	Drop Off Pt / Time	Pick Up Pt / Time	
27.	E-157 WTS2 Pine Mountain Exc.	Bob Goss	1	7/8			
28.	E-172 WTS2 Upper Valley	Joseph Schoenmakers	1	7/12			
29.	E-174 WTS2 Upper Valley	Jim Smith	1	7/12			
30.	E-154 SKG2 Western	Rick Lauman	2	7/8			
31.	E-155 SKG2 Mountain View	Shawn Beaman	2	7/8			
32.							
33.	E-92 DZR3 Batchelor Excavation	Jay Batchelor	2	6/28	Camp 4 Spike	Camp 4 Spike	
34.	E-100 DZR4 Douglas Logging	Steve Douglas	2	7/1			
35.	E-143 EXC2 Delange Enterprises	Pete Delange	2	7/5			
36.	E-71 GRD2 Scotts Excavating	Mark Rowe	2	7/4			
37.	E-72 GRD2 Scotts Excavating	Jim Kitterman	2	7/13	Wyatt Radke		
38.	E-69 FTRA Morris Forestry	Jake Wilcox	1	7/7			
39.	E-151 MBM2 Dukes	Chris Boles	2	7/8			
40.	E-152 MBM2 Axsus	John Cisneros	2	7/10			
41.							
42.	O-68 MEDIC 2	Joel Bower	1	7/3			
43.	O-76 MEDIC 5	Brian Linacre	1	7/7			
44.	O-271 EMPF <i>MEDIC 7</i>	Steve Drab	1	7/11			
45.							
46.	O-189 SOF2	John Nickey	1	7/1			
47.							
48.	E-19 UTV						
49.	E-44 UTV						
50.							
51.							
7. Control Operations							
<b>Task:</b> Scout proposed control lines at Oss Peak and Johnson Creek. Assess structures from Deer Point to Mitchel Creek. Implement control lines from H41 to DP50. <i>DPTG</i>							
<b>Purpose:</b> To protect critical values at risk.							
<b>End state:</b> To have established control lines in place that correspond to Pioneer Fire strategic plan.							
8. Special Instructions							
<ul style="list-style-type: none"> <li>Ensure hazard mitigations and IWI protocols are in place before taking action.</li> <li>Contingency resources working DIV H: Draft sites must be reviewed by READ.</li> <li>** Denotes available for Initial Attack</li> </ul>							
9. Division / Group Communication Summary							
Function	Frequency	System	Channel	Function	Frequency	System	Channel
Command Repeater	See Comm Plan			Command	See Comm. Plan		
TAC				Air To Ground	See Comm. Plan		
Prepared by (Resource Unit Leader): Name: Gary Duranceau			Approved by (Planning Section Chief) Name: Mike Crawford		Date	6/27/24	Time 1900

ICS 204  
*E173 WTS2 Ridgetop Iron Tim Whitehurst (1) 7/12*  
*E170 DUMP Boulder Creek Mitch Jack (1) 7/12*  
 NFES 1328

<b>DIVISION ASSIGNMENT LIST</b>		1. Branch <b>V</b>	2. Division / Group <b>Staging</b>					
3. Incident Name <b>Pioneer</b>		4. Operational Period Date: <b>06/28/2024</b> Time: <b>0700-2100</b>						
5. Operations Personnel								
Operations Chief	Jon Larson / Jesse Kiene (T)	Division / Group Supervisor	Jon Merager					
Operations Chief (Plans)	Rob Poyner (T)	Branch Director	Alfred Wiehl					
Safety Officer	Matt Broyles / Eric Brown	Air Attack Supervisor	Chad Bergren					
6. Resources Assigned this Period								
	Strike Team / Task Force / Resource Designator	Leader	Number Persons	Tentative Last Work Day	Drop Off Pt / Time	Pick Up Pt / Time		
1.	<b>E-153 FEL1 Dukes</b>	<b>Nick Marley</b>	<b>2</b>	<b>7/8</b>				
2.								
3.								
4.								
5.								
6.								
7.								
8.								
9.								
10.								
11.								
12.								
13.								
14.								
15.								
16.								
17.								
18.								
19.								
20.								
7. Control Operations								
<b>Task:</b> Remain ready and available for divisions as needed.								
<b>Purpose:</b> To assist divisions as needed to complete missions as appropriate.								
<b>End state:</b> Support suppression efforts as needed to project communities.								
8. Special Instructions								
9. Division / Group Communication Summary								
Function	Frequency	System	Channel	Function	Frequency	System	Channel	
Command Repeater		See Comm Plan		Command		See Comm. Plan		
TAC				Air To Ground		See Comm. Plan		
Prepared by (Resource Unit Leader): Name: Gary Duranceau			Approved by (Planning Section Chief) Name: Mike Crawford		Date	6/27/24	Time	1900

DIVISION ASSIGNMENT LIST			1. Branch	2. Division / Group		
3. Incident Name <b>Pioneer</b>			4. Operational Period Date: <b>06/28/2024</b> Time: <b>0700-2100</b>			
5. Operations Personnel						
Operations Chief	Jon Larson / Jesse Kiene (T)		Division / Group Supervisor	Nate Crawford / Seth Ellis (T)		
Operations Chief (Plans)	Rob Poyner (T)		Branch Director			
Safety Officer	Matt Broyles / Eric Brown		Air Attack Supervisor	Chad Bergren		
6. Resources Assigned this Period						
	Strike Team / Task Force / Resource Designator	Leader	Number Persons	Tentative Last Work Day	Drop Off Pt / Time	Pick Up Pt / Time
1.	O-161 TFLD Boat Coordinator	Cameron Chambers	1	7/3	Lucerne	Lucerne
2.	O-50 TFLD	Todd Olson	1	6/30	Lucerne	Lucerne
3.	O-160 TFLD	Brian Turner	1	7/3	ICP	ICP
4.	O-248 TFLD (T)	Jason Ward	1	7/9	Lucerne	Lucerne
5.	O-263 TFLD (T)	Aaron Pedersen	1	7/12		
6.	O-162 HEQB - Zulu (UAS)	Nicolas Glatt	1	7/3	ICP Lucerne	ICP Lucerne
7.	O-163 HEQB (T)	Emma Ahlrichs	1	7/3	Lucerne	Lucerne
8.						
9.	E-1 TBOT WA-NCP NPS	Sonja Shaw	1		Stehekin	Stehekin
10.	E-3 TBOT Chelan Co. F&R#7	Brandon Asher	2		Lucerne	Lucerne
11.	E-12 TBOT WA-OWF Chelan RD	Dick Gordon	1		FS Dock	FS Dock
12.	E-91 TBOT DNR Mud Puppy	Curt Hekkila	1		Lucerne	Lucerne
13.	E-98 TBOT Chelan County Sheriffs	Rich Magnussen	1		FS Dock	FS Dock
14.	E-43 TBOT Llama Boat	Gayle Thomas	1		FS Dock	FS Dock
15.	E-120 TBOT Pilgram	Justin Gavin	1	7/11	Lucerne	Lucerne
16.						
17.	O-136 MEDIC 6	Steve Medina	1	7/8	Lucerne	Lucerne
18.	O-152 EMT 1	Ivan Huld	1	7/1	Lucerne	Lucerne
19.						
20.						
21.						
22.						
23.						
24.						
7. Control Operations <b>Task:</b> Contain fire spread to the southwest where terrain and fuels allow for high probability of success. Assess fire perimeter progression to the west/southwest at higher elevations. <b>Purpose:</b> To slow fire progression, provide time for suppression tactics, and prep around critical values. <b>End state:</b> Minimize fire impacts to critical values including private inholdings and Forest Service infrastructure						
8. Special Instructions						
<ul style="list-style-type: none"> <li>In large or long-term spike camps use helicopters, boats, or pack stock to deliver portable backcountry latrines and remove human waste if necessary. If camp does not have adequate pack, boat, or air support for human waste management, establish community latrines well away from water sources and common areas. Use human waste bags, if necessary.</li> <li>Ensure hazard mitigations and IWI protocols are in place before taking action.</li> </ul>						
9. Division / Group Communication Summary						
Function	Frequency	System	Channel	Function	Frequency	System
Command Repeater	See Comm Plan			Command	See Comm. Plan	
TAC				Air To Ground	See Comm. Plan	
Prepared by (Resource Unit Leader): Name: Gary Duranceau			Approved by (Planning Section Chief) Name: Mike Crawford		Date	Time
					6/27/24	1900



### AIR OPERATIONS SUMMARY ICS-220

Incident Name / Number: Pioneer / WA-SES-000173  
 Sunrise: 05:04  
 Sunset: 21:03  
 Airport: S70  
 Pumbaki: 21:33

General Remarks, Safety Notes, Hazards, Air Operations Special Equipment, etc.

- \*Order All Aircraft through Command to Helibase.
- \*Sanitize Buckets before changing water sources.
- \*Clear drop area/line before initiating drop sequence.
- \*Be cognizant of all overhead and environmental hazards while working with Aircraft.
- \*All GPS is to be collected in DMW
- \* \*\* WINDS: return to helibase if winds become unmanageable.

\*Aviation daily cost to: 2024.pioneer.finance@firenet.gov  
 \*Aviation daily cost to: pioneerhelibase2024@gmail.com

Time Prepared: 18:00  
 Shutdown: 21:00  
 Helibase information

Pioneer/ Helibase Valley Helibase  
 Location: 48 25.567 N  
 118 56.56 W  
 Pioneer HB (Chelan)  
 Phone (971) 762-4575  
 Valley HB Phone (Methow)  
 (971) 727-7255

Date Prepared: 6/27/2024  
 Operational Period - Date: 6/28/2024  
 TFR (A-74) Surface to 10,000'  
 4/4350 TFR Freq 123-4000  
 In Effect - 24 Hours  
 Helispots  
 H1 | 48 10.755N / 120 31.803W  
 H5 | 48 12.162N / 120 35.447W  
 H10 | 48 14.050N / 120 36.461W  
 H12 | 48 13.325N / 120 35.906W  
 H14 (Steakin AP) | 48 20.75N / 120 43.25W  
 H15 | 48 08.754N / 120 28.813W  
 H16 | 48 07.74N / 120 28.55W  
 H25 | 47 59.212N / 120 18.528W

Prepared By: Mark Hocken/ACBD  
 Operational Period - Time: 0700-2100  
 Medvac Ship Information  
 Medvac ship N-684H  
 2 EMT's, Lifter Kit  
 call helibase to launch  
 Make/Model: 407  
 Location: Chelan  
 Request Procedure for This Aircraft:  
 Communications on Command,  
 Short-Haul North Cascade N-125CL  
 Order through Helibase/CWICC,  
 CWICC (509) 884-3473 x 2  
 40 min to 1 hour response on to 2100

Position: Mark Hocken (541) 281-1085  
 Ted Haas (541) 846-1318  
 Dave Moore (513) 818-9192  
 Ben Thayer (208) 830-1636  
 Lance Jorg (971) 291-7443  
 Anika Pells (408) 368-0938  
 Randy Mcandress (509) 888-7243  
 Jerry Messinger (541) 308-0907  
 Chad Bangren (541) 218-2594  
 HLCO  
 HLCO I  
 Short Haul KC ACL  
 John Profferswalte (208) 830-4436  
 UAS  
 Marshall Vyallice (509) 670-6365

Equipment/Supplies  
 Com (Chelan) Trailer E-20  
 Hand Wash Station E-47  
 Water Tender E-77  
 Water Tender E-14  
 Com (Valley) Trailer E-150  
 Water Tender Valley E-156

**HELICOPTERS - Assigned**

FAA #	TYPE	Make/Model	Helibase	Start	Avail	Remarks
HB-16FH (A-22)	1	UH-60	Valley	0800	0900	BKT/LL
HB-181KA (A-24)	1	K-1200	Valley	0800	0900	BKT/LL
H-407RL (A-7)	3	407	Chelan	0800	0900	**Unavailable**
H-684H (A-46)	3	407	Chelan	0800	0900	BKT/LL/Recon/HLCO
H-544AS (A-60)	3	AS350B3	Chelan	0800	0900	HLCO/Recon
H-125CL	3	AS350B3e	Wenatchee	0800	0900	Short haul, Recon In route

**HELICOPTERS - GACC Preps**

FAA #	TYPE	Make/Model	Airport	Start	Avail	Remarks
H-205TK	2	Bell 205A	Chelan	0800	0900	BKT/LL call CWICC
HB-344RA (A-45)	1	CH-47D	Valley	0800	0900	BKT/LL lend/lease to Wenatchee CWICC IA Fire

**FIXED WING A/H/LCO**

FAA #	Call Sign	Make/Model	Base	Start	Avail	Remarks
N-588DV (A-42)	610	Commander	WEN	0800	1000	Assigned ATGS
H-544AS (A-60)	4AS	AS350B3	Chelan	0800	0900	Assigned HLCO
N-197GB	617	Commander	Wenatchee	0800	1000	Wenatchee IA (not assigned)

**UAS**

Call Sign	Type	Make/Model	Base	Start	Avail	Remarks
UR-31	3	AltaX	Lucerne	0800	2200	IR/PSD

# INCIDENT RADIO COMMUNICATIONS PLAN (ICS 205)

Controlled Unclassified Information//Basic

1. Incident Name: <b>PIONEER</b>		2. Date/Time Prepared: Date: 06/27/2024 Time: 1600		3. Operational Period: Date/Time From: 06/28/2024 0600 Date/Time To: 06/29/2024 0600						
4. Basic Radio Channel Use:										
Zone Group	Ch #	Function	Channel Name/Trunked Radio	Assignment	RX Freq	RX Tone/NAC	TX Freq	TX Tone/NAC	Mode (A,D, or M)	Remarks
	1	TACTICAL	TAC 1	DIV A & S	168.0500	123.0	168.0500	123.0	A	
	2	TACTICAL	TAC 2	DIV D	168.2000	123.0	168.2000	123.0	A	
	3	TACTICAL	TAC 3	DIV Z	168.6000	123.0	168.6000	123.0	A	
	4	TACTICAL	TAC 4	DIV H / CONT	166.7250	123.0	166.7250	123.0	A	
	5	TACTICAL	TAC 5	ROADS	166.7750	123.0	166.7750	123.0	A	
	6	TACTICAL	TAC 6	BOAT	168.2500	123.0	168.2500	123.0	A	
	7	COMMAND	CMD 7	ALL	168.4750	123.0	165.4000	123.0	A	CHELAN BUTTE
	8	COMMAND	CMD 8	ALL	169.5375	123.0	164.7125	123.0	A	OLD MAID MT
	9	COMMAND	CMD 9	ALL	170.4500	123.0	168.1000	123.0	A	MOORE MT
	10	COMMAND	CMD 10	ALL	170.0125	123.0	165.2500	123.0	A	SLIDE RIDGE
	11	COMMAND	CMD 11	ALL	170.4125	123.0	165.9625	123.0	A	FOX PEAK
	12	TACTICAL	A/G PRI	ALL DIVS	169.1500	000.0	169.1500	000.0	A	
	13	AIR TO GROUND	A/G SEC	ALL DIVS	168.4000	000.0	168.4000	000.0	A	TAKE OFF LANDING CHANNEL
	14	AIR TO GROUND	A/G 3	ALL DIVS	166.6125	000.0	166.6125	000.0	A	
	15	AIR TO GROUND	V/MED 29	ALL DIVS	155.3475	156.7	155.3475	156.7	A	AIR EMS COORDINATION
	16	AIR TO GROUND	AIRGUARD	ALL DIVS	168.6250	000.0	168.6250	110.9	A	EMERGENCY AIRCRAFT CONTACT
5. Special Instructions: 24 hour staffing: PIONEER COMMUNICATIONS PHONE NUMBER: (208) 891-7948 / CURRENT CLONE "PIE 6-21"										
6. Prepared By COM1				Name: SETH BAUMGARTEN		Signature: <i>Seth Baumgarten</i>		Date/Time: 6/27/24 1600		
ICS 205						IAP Page				

# INCIDENT RADIO COMMUNICATIONS PLAN (ICS 205)

Controlled Unclassified Information//Basic

<b>1. Incident Name:</b>		<b>2. Date/Time Prepared:</b>		<b>3. Operational Period:</b>						
PIONEER		Date: 06/27/2024		Date/Time From: 06/28/2024 0600						
Branch IV & V		Time: 1600		Date/Time To: 06/29/2024 0600						
<b>4. Basic Radio Channel Use:</b>										
Zone Group	Ch #	Function	Channel Name/Trunked Radio	Assignment	RX Freq	RX Tone/NAC	TX Freq	TX Tone/NAC	Mode (A, D, or M)	Remarks
	1	TACTICAL	TAC 1	DIV A & S	168.0500	123.0	168.0500	123.0	A	
	2	TACTICAL	TAC 2	DIV D	168.2000	123.0	168.2000	123.0	A	
	3	TACTICAL	TAC 3	DIV Z	168.6000	123.0	168.6000	123.0	A	
	4	TACTICAL	TAC 4	DIV H / CONT	166.7250	123.0	166.7250	123.0	A	
	5	TACTICAL	TAC 5	ROADS	166.7750	123.0	166.7750	123.0	A	
	6	TACTICAL	TAC 6	BOAT	168.2500	123.0	168.2500	123.0	A	
	7	TACTICAL	A/G PRI	ALL DIVS	169.1500	000.0	169.1500	000.0	A	
	8	AIR TO GROUND	A/G SEC	ALL DIVS	168.4000	000.0	168.4000	000.0	A	
	9	AIR TO GROUND	A/G 3	ALL DIVS	166.6125	000.0	166.6125	000.0	A	
	10	COMMAND	CMD 10	ALL	170.0125	123.0	165.2500	123.0	A	SLIDE RIDGE
	11	COMMAND	CMD 11	ALL	170.4125	123.0	165.9625	123.0	A	FOX PEAK
	12	COMMAND	CMD 12	ALL	170.8875	123.0	166.575	123.0	A	GOAT MOUNTAIN
	13	LOCAL RPTR	GOAT	ALL	172.3500	146.2	165.0125	118.8	A	GOAT MOUNTAIN
	14	LOCAL RPTR	MCLUR	ALL	172.3500	146.2	165.0125	103.5	A	McCLURE MTN
	15	AIR TO GROUND	VMED 29	ALL DIVS	155.3475	156.7	155.3475	156.7	A	AIR EMS COORDINATION
	16	AIR TO GROUND	AIRGUARD	ALL DIVS	168.6250	000.0	168.6250	110.9	A	EMERGENCY AIRCRAFT CONTACT
<b>5. Special Instructions: 24 hour staffing: PIONEER COMMUNICATIONS PHONE NUMBER: (208) 891-7948 / CURRENT CLONE "IV"</b>										
<b>6. Prepared By COM1</b>										
Name: SETH BAUMGARTEN				Signature: <i>Seth Baumgarten</i>						
ICS 205				Date/Time: 6/27/24 1600						



## *PIONEER FIRE SAFETY MESSAGE*

*JUNE 28, 2024*

### Ready to Respond

The Pioneer Fire has presented every person on the fireline with many challenges regarding health and safety. First, great work and great safety record; let's keep it up! A process is in place to get the help you need if and when a medical emergency takes place. I'm talking about the Medical Plan (ICS 206WF), also known as the 8 line or MIR. (Consider it the 911 system for us) Our communications unit is available 24/7 and can be reached on the command frequencies. The 24-hour phone number for Communications is: **208-891-7948**

#### WHAT:

- Any accident or injury where a medical evaluation is requested. This is where the colors come in. (Green, Yellow, Red)

#### WHEN:

- 24/7 (Please hear this!)

#### HOW:

- Ok, stop reading this now, turn to the last page in your IAP and you will find the 206WF. Go ahead, look it over, I can wait...

#### PRACTICE MAKES PERFECT:

- Take some time to practice a medical scenario utilizing the process. Get together with your Safety Officers to facilitate.
- Leaders: Take lead on this, demonstrate and lead by example.
- Crew members: Now it is your turn to give it a try. (Don't worry about making mistakes or being nervous, this is a process and you will get better)
- Medic Teams: Pull out your gear and give a "show me" tour to the troops.

#### LEADER'S INTENT:

The intent of this plan is to get the help you need and establish command and control of an emergency situation as quickly as possible by identifying responsibilities and procedures.

Make good decisions!

Your NW-7 Safety Officers: Eric Brown / Matt Broyles

**Pioneer Fire  
Human Resource Message**

June 28, 2024

**Mutual Respect**

**It's hot!**

What we don't need is a hot head. It's time in the incident to remind everyone about mutual respect.

Please be patient and courteous. We work better when we are.

Remember, danger is only one letter away from anger.

**Breaks**

Breaks are an important component of our workday. They help us to stay focused, maintain positive attitudes, and ensure a safe work environment. Breaks also serve as opportunities to build or recharge crew and/or team morale.

Be cool and have a safe shift. Kindness is the new cool!

Margaret Dietrich, HR Specialist  
Cell 360-701-3154

## FINANCE MESSAGE

**Finance Email: [2024.pioneer.finance@firenet.gov](mailto:2024.pioneer.finance@firenet.gov)**

**Finance Phone: 484-501-1835**

**This incident requires electronic documentation.** Please email your time to the address above. Scanned PDF's please, no .JPG's. Feel free to call finance for help if needed. Scanners are also available at ICP.

### Required Documents

Overhead, Agency Crews & Cooperators	Contract Resources
<b>Finance docs needed:</b> Resource Order, Manifest, Cooperative Agreement, Casual Hire Form w/ECI# (as applicable)	<b>Finance docs needed:</b> Resource Order, Manifest, Full Contract/Agreement, Certifications ( <i>if required</i> ) Pre-Inspection
<b>Daily:</b> CTRs, Shift Tickets  <b>CTR's should be named as:</b> CTR_RO#_YYMMDD-DD (Ex: CTR_O235_240605-07)  Electronic CTR available! Use QR code on front cover	<b>Daily:</b> CTRs, Shift Tickets, receipts (claims, etc.) <b>NOTE:</b> Document travel times and odometer readings  <b>Shift Tickets should be named as:</b> ST_RO#_YYMMDD-DD (Ex: ST_E5_240623-27)  Electronic shift ticket available! Use QR code on front cover
<b>Demob:</b> Signed OF-288; Signed OF-286	<b>Demob:</b> Contractor Evaluations, Shift Tickets, receipt(s) for Addition/Deductions, Post-Inspection, Signed OF-286
<p><b>"H-Pay"- Entitlement to Hazardous Pay Differential (5 CFR 550.904) Hazard pay MUST be supported by a justification. If justification is not provided, you chance losing your entitlement.</b></p>	<p><b>Please call finance regarding issues with your time:</b></p> <p>No one on List today, any questions for Finance, please email us. Tomorrow we will have a phone number for Team 7 Finance  <b>Thank You.</b></p>

**Incident Name: Pioneer**  
**Incident Number: WA-SES-000173**  
**Financial codes:**  
 WA DNR – 221-LDW  
 DOI – RZ79  
 USDA – PNRZ79 (1522)

**Please make sure you check in using QR code on the front of the IAP and then email your time daily.**  
**THANK YOU!!**

## **Resource Advice**

Lead READ: Brigitte Ranne 509-663-6118, [brigitte.ranne@usda.gov](mailto:brigitte.ranne@usda.gov)  
REAF: Hector Rodriguez 509-393-5379, [Hector.Rodriguez3@usda.gov](mailto:Hector.Rodriguez3@usda.gov)  
REAF: Eireann Pederson 360-854-8197, [eireann.pederson@usda.gov](mailto:eireann.pederson@usda.gov)  
REAF: Carrissa Camenson 360-899-7147, [carissa.camenson@usda.gov](mailto:carissa.camenson@usda.gov)



Resource Guidelines

### *MIST for Spike Camp and Lucerne Forward Operating Base Management*

- Employ minimum impact suppression tactics (MIST) where feasible, especially in remote or sensitive areas.
- If spike camps are necessary, use existing, or previously impacted campsites where available. If existing campsites are not available; use your local resource advisor to help identify the most resilient sites in rocky or sandy soils. Avoid camping in wet meadows, along streams, or on lake shores.
- Store food properly so that it is not accessible to wildlife. Consider hanging food in trees at least 15 feet off the ground and 5 feet from the trunk of the tree, or store food in sealable containers. Store food away from the campsite (300 feet is ideal) to reduce the risk of human and bear (and rodent!) conflicts.
- Do not let garbage and food scraps accumulate in camp. All garbage and food scraps need to be removed from the camp ASAP and before leaving the site.
- Minimize disturbance to land in preparing bedding and campfire sites. Do not clear vegetation, trench, or excavate a flat spot to create bedding sites.
- Do not use nails in trees. Don't construct camp furniture.
- If a campfire is built for warmth in the evening, build either a pit or mound fire. Use dead and down firewood. Use small diameter wood that burns down more cleanly. Don't burn plastics or aluminum - pack it out with the rest of the camp garbage.
- In small spike camp situations (not Lucerne), individuals should use the "cat-hole" method of disposing of human waste. Toilet seats should be located a minimum of 200 feet from water sources. Holes should be dug 6-8 inches deep.
- In large or long term spike the camps use helicopters, boats, or pack stock to deliver portable backcountry latrines and remove human waste if necessary. If the camp does not have adequate pack, boat, or air support for human waste management, establish community latrines well away from water sources and common areas. Use human waste bags, if necessary

### *Dipping and Drafting*

- No cross-dipping between water bodies. All buckets or snorkels should be cleaned, inspected, and dried in the sun if they must be used between lakes. Dipping in small lakes must be pre-approved by the READ or AA.
- When drafting, use already disturbed areas for stream access (road crossings, dispersed campsites) to reduce the need for riparian vegetation clearing.
- Use screens (3/32" inch) for all pumping operations.
- Use containment pads and basins under pumps and fuel cans. Ensure a spill kit is present with every operating pump.

### *Invasive Species*

- The fire is burning within an infestation of common crupina, a WA State Class A Noxious weed. Prevent spread of crupina off site – plan to wash hose and other equipment. Request fire fighters brush boots before boarding boat or before entering National Park Service Land.
- Inspect slings and remove all plant/soil material prior to use.
- Ensure all camps, staging areas, helispots and cargo areas are free of invasive plants to prevent spread to un-infested areas.
- Weed wash all vehicles, including boats, when they arrive to the incident and when demobed.

#### *Fisheries /Aquatic Recommendations*

- If trees must be felled in riparian areas for suppression or safety reasons, fell them toward streams where possible and minimize bucking where possible.
- Non-mechanized suppression activities are recommended within Riparian Reserves (150-300 ft from stream channel). For example, consider hand lines instead of dozer lines when feasible.

#### *Retardant Use*

- Retardant avoidance areas are present in the fire suppression area for both aquatic and terrestrial species.
- Track all retardant drops – locations and amounts.
- Report all mis-applications ASAP to READ. Monitoring and reporting of misapplications is required.

#### *Wet Meadows*

- No line or other disturbance in wet meadows in the Summer Blossom area (east of South Navarre campground above and below the 8200 road) and at Coyote and Poison Springs at the headwaters of their respective creeks.

#### *Dry Meadows*

- Minimize disturbance from staging and parking areas in dry meadows. These areas recovery slowly and are vulnerable to invasive plant infestation.

#### *White Bark Pine*

- Avoid cutting white bark pine whenever possible. Needles of 5 keep it alive! Ask READ for help with ID.

#### *Burnout operations*

- Plan to protect whitebark pine of all ages and mature cold and moist forest during burnouts. READ consultation and line officer approval is required for burn plans that include these forest types.
- During burnouts modify firing to retain large trees, large snags and large down wood in forests whenever possible.
- Minimize total acres burned in burnouts.
- Incorporate typical resource protection measures used in RX burning whenever it is safe and practical to do so (such as retention of green islands in moist areas).
- Provide a map of areas that were burned as part of the burnout operation (for use in emergency consultation).
- If cultural resources are discovered during suppression activities, leave on site and notify READ.



# LOGISTICS NOTES

---

## Pioneer Fire ICP

Breakfast 0530 – 0900

Lunch @ Refer Trailer – 0500 - 2100

Dinner 1800 -2100

Shower 0500 – 1200 & 1400 – 2200

Supply 0600 – 2200

Ground Support 0700 – 2100

Fuel Tender 0700 – 2100

Weed Wash 0700 – 1400 & 1600 – 2000

## FOB Lucerne

Breakfast 0600 - 0900

Lunch – Pickup with Breakfast

Dinner 2030 – 2130

Shower 0500 – 1200 & 1400 – 2200

Supply 0600 – 2200

## Ground Support Contact Numbers:

Casey Glade 435-704-4702, Joe Keady 541-733-6701

## Ordering Information

Submit all orders on General Message Form 213 to the following email address;

[2024.pioneer.ordering@firenet.gov](mailto:2024.pioneer.ordering@firenet.gov)

Ordering Manager Noe Reyes 208-416-3715

# Example GM (ICS213) for Boat Transportation

**\*\* WHEN ARRANGING BOAT TRANSPORTATION USE THE FOLLOWING \*\***

**Nathan Crawford, DIVS, 541-219-1374, Nathan\_crawford@fws.gov**

**Seth Ellis, DIVS (T), 509-860-3290, seth.ellis453@gmail.com**

GENERAL MESSAGE (ICS 213)		
<b>1. Incident Name (Optional):</b> Pioneer Fire		
<b>2. To (Name and Position):</b> Nate Crawford DIVS/Seth Ellis- Boat DIVS(t)		
<b>3. From (Name and Position):</b>		
<b>4. Subject:</b> Ferry Tickets	<b>6. Date:</b>	<b>6. Time</b>
<b>7. Message:</b> SAMPLE GENERAL MESSAGE FORM WITH REQUIRED INFORMATION  O or C # _____ Departure Date _____ Ferry Ticket Departure Location (Chelan/Fields Point/Lucerne/Stehekin) _____ Ferry Ticket Arrival Location (Chelan/Fields Point/Lucerne/Stehekin) _____ Email address for confirmation _____ * If unable to receive email, please note and tickets will be emailed to either your DIVS or the Boat Coordinator.* Phone #: _____  FERRY TICKETS NEED TO BE SUBMITTED TO BOAT DIVS BY 1600 THE DAY PRIOR OF DESIRED DEPARTURE. IT IS PREFERRED FORMS ARE SUBMITTED 48 HRS PRIOR TO KNOWN AND SET LWD.		
<b>8. Approved by:</b> Name: _____ Signature: _____ Position/Title: _____		
<b>9. Reply:</b>		
<b>10. Replied by:</b> Name: _____ Position/Title: _____ Signature: _____		
ICS 213	Date/Time: _____	

Enter

Overhead  
Camping

Check  
In/Demob/  
Plans

Finance

Logistics

Print Trailer

Overhead  
Parking

Medical

Ops

IC

Ops

Plans - FBAN

Agency  
Administrators

Comms

Human  
Resources

PIO

IT

Meeting Tent

Showers

Handwash

Tent  
Camping

Supply

Ground  
Support

Tent  
Camping

Kitchen

Recycling

Dumpster

Lunch/Ice

Exit

Parking/  
Staging

**ICP**

Pioneer

WA-SES-000173

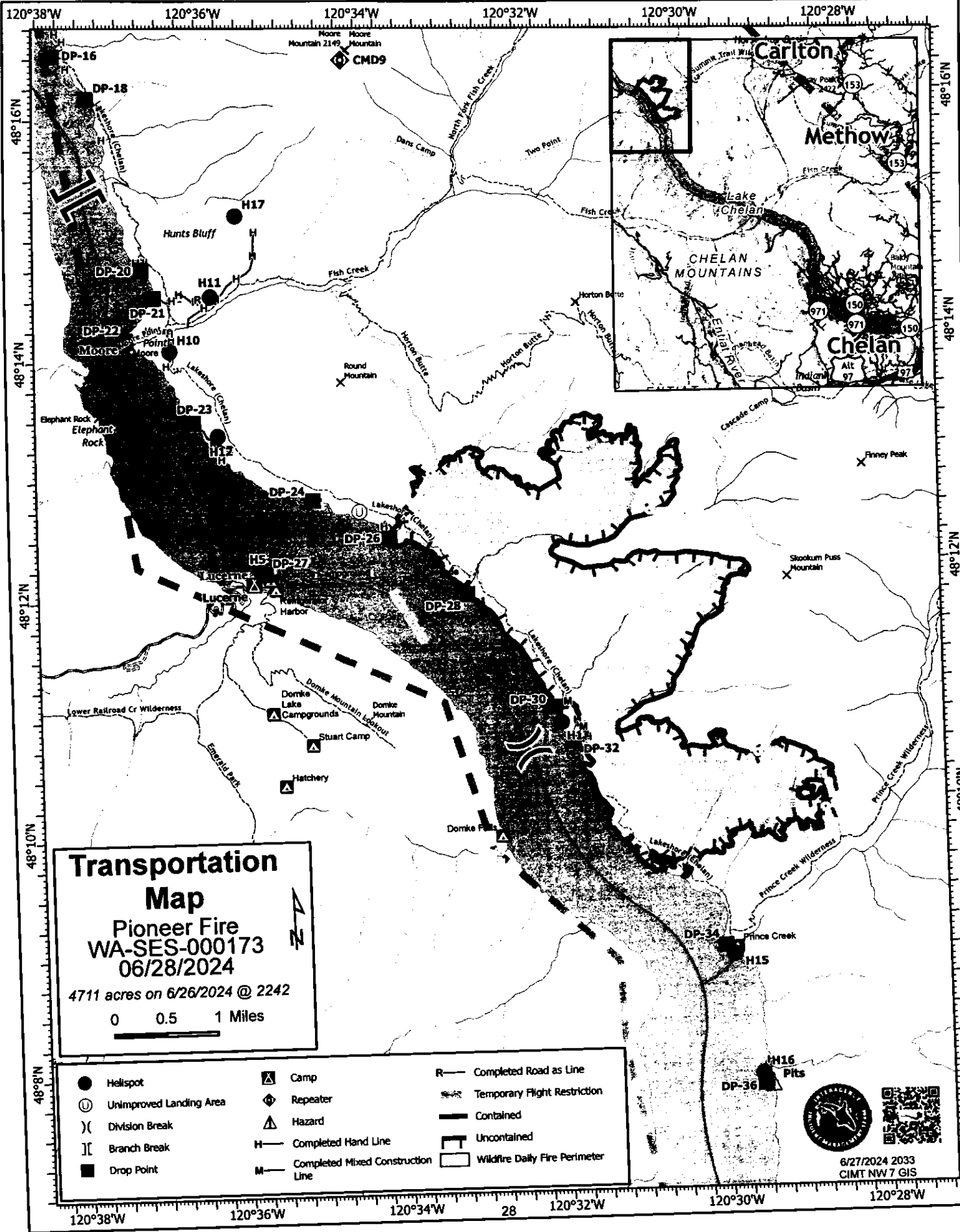
1099 N. Bradley St.

Chelan, WA 98816

0 50 100 200

Feet

© 1998 ICOM/FAW/3, Oct 19 2024 0908  
Eaton American 1983 Datum, Lat/Long Grid



# Transportation Map

Pioneer Fire  
 WA-SES-000173  
 06/28/2024

4711 acres on 6/26/2024 @ 2242

0 0.5 1 Miles

- |                           |                                     |                                 |
|---------------------------|-------------------------------------|---------------------------------|
| ● Helispot                | ⚠ Hazard                            | — Completed Road as Line        |
| ⊙ Unimproved Landing Area | ⚡ Temporary Flight Restriction      | ▬ Contained                     |
| ) Division Break          | — Completed Hand Line               | ▬ Uncontained                   |
| Branch Break              | — Completed Mixed Construction Line | ▭ Wildfire Daily Fire Perimeter |
| ■ Drop Point              | ⛑ Camp                              |                                 |
|                           | ⬢ Repeater                          |                                 |



6/27/2024 2033  
 CIMT NW 7 GIS



# DIVISION PLANNING WORKSHEET

NEXT OPERATIONAL DATE	DIVISION/GROUP	NAME OF DIVISION/GROUP
-----------------------	----------------	------------------------

ROLL OVER ASSIGNED RESOURCES     
  EXCESS RESOURCES     
  CORRECTION TO 204

E OR C NUMBER	RESOURCE DESIGNATOR	LEADER	NO. PERSONS	COMMENTS

OPERATIONAL PROJECTION (Task, Purpose, End State) 24 hrs

OPERATIONAL PROJECTION (Task, Purpose, End State) 48 hrs

OPERATIONAL PROJECTION (Task, Purpose, End State) 72 hrs

REQUEST FOR ADDITIONAL RESOURCES

NUMBER	TYPE	RESOURCE KIND	DATE NEEDED

CRITICAL NEEDS: If your resource request is critical, describe the mission and the duration resources are needed.



### Team 7 Line Supply Order

### Order #

Date & Time  
Order Placed  
Deliver To Location/time  
(Division, Drop Point, Heli Spot, Lat/Long)

Delivery Method  
(Driver, Heli, DIVS to P/U)

Order received in Communications (name & time)

Ordered by (name and Position)

Order received in Supply by (name & time)

Ground Contact

Order received in Transportation by (name & time)

Contact Freq.

Order received in Helibase by (name & time)

Special Instructions/line length/ elevation

Order shipped to line by (name & time)

Team 7 Hose Lay Kit		
Item	Amount	Amount
1 1/2 in. synthetic hose		1000 ft.
1 in. synthetic hose		500 ft.
3/4 in. garden hose		500 ft.
1 1/2 in. gated wye		5 ea.
1 1/2 in. - 1 in. reducer		5 ea.
1 in. combination nozzle		5 ea.
1 in. - 3/4 in. reducer		5 ea.
3/4 in. valve, shutoff, ball		5 ea.
3/4 in. nozzle		5 ea.
3/4 in. gated wye		5 ea.

SPRINKLER KIT NFES # 1048		
Item	Amount	Amount
Sprinkler head w/ couplings		4 ea.
3/4 in. garden hose		250 ft.
1 1/2 x 1 1/2 x 1 tee		4 ea.
1 x 3/4 reducer		4 ea.
1 1/2 in. - 1 in. reducer		1 ea.
3/4 in. gated wye		2 ea.
3/4 in. valve, shutoff, ball		4 ea.
3/4 in. nozzle		1 ea.
3/4 in. pressure regulator		4 ea.
3/4 in. nozzle, plastic 60 GPM		1 ea.
10 in. adjustable wrench		1 ea.

### LINE ORDER PROCESS

Line orders from the field should go through the Communication Unit via radio (primary) or 24-hour phone number shown on the cover of the IAP. All other supply requests should be submitted in person to the Supply Unit.

#	Item	Amount	#	Item	Amount
1	Meals #1842	MRE 12/Cs	33	Bath in a Bag, Large #0712	
2	Water #0048	5 gal cubies	34	Bath in a Bag, Small #0206	
3	Gatorade	24/Cs	35	Coffee Kit #0480	
4	Batteries, AA #0030	24/pg	36	Coffee 3lb Can	
5	Batteries, AAA #7471	24/pg	37	Folda-Tank 1500 gal #0664	
6	Gas Unleaded	5 gal	38	Pumpkin 3000 gal. #0568	
7	2 Cycle Oil #7724	5 gal mix	39	Backpack Pump #0909	
8	2 cycle Oil #3444	1 Gal mix	40	Mark III pump + Kit #0148	
9	Diesel	5 gal	41	Lightweight Pump + Kit #8606	
10	Bar Oil #1880	1 Gal	42	Volume Pump #1222	
11	Bar Oil #1869	1 Qt	43	Hose 1 1/2" #1239	100' lg
12	Shovel #0171		44	Hose 1" #1238	100' lg
13	Pulaski #0146		45	Hose 3/4" #1016	50' lg
14	Mcleod #0296		46	Reducer 1 1/2" to 1" #0010	
15	Combi #1180		47	Reducer 1" to 3/4" #0733	
16	Chainsaw Kit #0340		48	Gated "y" 1 1/2" #0231	
17	Drip Torch Empty #0241		49	Gated "y" 1" #0259	
18	Fussee #0105		50	Gated "y" 3/4" #0904	
19	Sleeping Pad #1566		51	In-line Tee 1 1/2" to 1" #0230	
20	Sleeping Bag #0022		52	Nozzle KK 1 1/2" #1082	
21	Fly Tent #0070		53	Nozzle KK 1" #1081	
22	Plastic Sheeting #0143		54	Nozzle 3/4" #0136	
23	Parachute Cord #0533		55	Nozzle, Forester 1" #0024	
24	Fiber Tape #0222		56	Sprinkler kit #1048	
25	Garbage Bags #0021		57		
26	Leadline 3000 lbs #0528		58		
27	Cargo Net 3000lb #0531		59	Team 7 Hose Lay Kit	
28	Swivel 3000lb #0526		60		
29	Slingable Bg 72 Gal Blivet #0426		61		
30	Foam 5 gal. #1145		62		
31	Toilet Paper #0142		63		
32			64		

## Check In Message

- Please complete the virtual check-in process via the QR code on the front cover.
- You are not checked in until you provide the following:
  - 1) Red Cards
  - 2) Roster/Manifest
- Please email documents to: [2024.pioneer.checkin@firenet.gov](mailto:2024.pioneer.checkin@firenet.gov)

Any Questions:

Phone: 509-661-5372

Email: [2024.pioneer.checkin@firenet.gov](mailto:2024.pioneer.checkin@firenet.gov)

---

## Demob Message

- Fliers complete the "Air Travel Request" via the QR code on the front cover 72 hours prior to flight date.
- Return supplies to the Cache.
- Return radios, antennas, etc., to Communications.
- Contact Finance about closing out your paperwork.
- Once the above items have been completed, SCAN the QR code on the front cover and complete the demob questions.

Any Questions:

Phone: 509-662-5376

Email: [2024.pioneer.demob@firenet.gov](mailto:2024.pioneer.demob@firenet.gov)



## Check in ASAP

O-174.15	Linda Gibson	DIVS	O-207	Steve Garvich	THSP
O-190	Brandon Asher	THSP	O-208	Bob Wentland	THSP
O-192	Tyee Zacher	THSP	O-209	Jason Watson	THSP
O-193	Adam Jones	THSP	O-210	Peter Brodie	THSP
O-194	Taylor Rains	THSP	O-211	Ron Simmons	THSP
O-195	Troy Keene	THSP	O-224	James Berge	DRIV
O-196	Sam Belsky	THSP	O-234	Alfred Wiehl JR	OPBD
O-197	Brandon Fogelson	THSP	O-256	Wayne Reggiatore	HMGB
O-198	Stephanie Preheim	THSP	O-262	Tumasi Ross	TFLD
O-201	Duke Odenrider	THSP	O-279	Brigitte Ranne	REAF
O-202	Chris Colbert	THSP	O-280	Eireann Pederson	REAF
O-203	Houston Stodghill	THSP	O-281	Carissa Camenson	REAF
O-206	Tim Sullivan	THSP	O-282	Ben Kilfoil	BT25





# Last Work Day / Demob Report

Incident: PIONEER US-WA-SES-000173

Questions ?? - Jay @ Demob (509) 661-5376

## LWD: 06/27 / Demob: 06/28

### CREWS

CRW1 C-8 CRW1 - UNION IHC

### OVERHEAD

SOFR O-85 MURRIN, ANDY K

## LWD: 06/28 / Demob: 06/29

### CREWS

CRW1 C-9 CRW1 - ZIGZAG IHC

CRW1 C-11 CRW1 - REDMOND IHC

### EQUIPMENT

DZR3 E-92 DZR3 - BATCHELOR EXCAVATION, LLC - N01927

### OVERHEAD

EMPF O-75 ETHERINGTON, NATHAN P

HECM O-119 HASTINGS, ANDREW B

HECM O-120 MASON, CORY WILLIAM

PIOC O-56 BOGARDUS, LARISA ANN

PIOC O-174.89 STECKER, LIVIA AUDREY



# Pioneer Fire WA-SES-000173

## C&G Contact List

Incident Commander	LeFevre	Nathan	nlefevre@blm.gov	(541) 255-6595
Deputy Incident Commander	Orr	Christopher	christopher_orr@nps.gov	(530) 640-1464
Safety Officer	Brown	Eric	ericbrown0523@gmail.com	(928) 699-3477
Safety Officer	Broyles	Matt	admbroyles@gmail.com	(541) 591-6151
Liaison Officer	Christianson	Shawn	shawn.christianson.adm@colvilletribes.com	(509) 429-3348
Liaison Officer	Suba	Mark	marksuba12@gmail.com	(541) 219-9048
Liaison Officer	Brody	Greg	lmtregbrody@gmail.com	(503) 482-8071
Liaison Officer (T)	Marchand	Rhonda	rmarchand76@yahoo.com	(509) 634-1166
Public Information Officer	Stecker	Livia	livia_stecker@firenet.gov	(509) 675-3504
Finance Section Chief	Westgate	Patty	pattywestgate@gmail.com	(541) 892-8432
Finance Section Chief (T)	Bailey	Lori	lori.bailey@usda.gov	(541) 589-0806
Operations Section Chief	Larson	Jon	jon_larson@fws.gov	(208) 631-6488
Operations Section Chief	Merritt	Seth	smerritt@esf-r.org	(425) 501-7384
Operations Section Chief	Kiene	Jesse	kiene@blm.gov	(541) 531-5568
Operations Section Chief (T)	Poyner	Rob	robert.poyner@usda.gov	(425) 512-2621
Logistics Section Chief	Yager	Max	orcamax2015@gmail.com	(541) 690-6627
Logistics Section Chief	Vaughan	Franklin	franklin.vaughan@usda.gov	(859) 619-7244
Logistics Section Chief	Wedekind	Cindy	cwedekind59@gmail.com	(541) 450-1136
Planning Section Chief	Crawford	Michael	mcrawfor@blm.gov	(458) 212-0501
Planning Section Chief (T)	Plummer	Debbie	dplummer@blm.gov	(509) 991-0334



## MEDICAL PLAN (206 WF)

1. Incident/Project Name		2. Operational Period				
<b>Pioneer Fire</b>		Date/Time: <b>06/28/24 0700-2100</b>				
<b>3. Ambulance Services</b>						
Name	Complete Address	Phone	Advanced Life Support (ALS)			
Lake Chelan EMS	Chelan, WA	911	Yes	No		
<b>4. Air Ambulance Services</b>						
Name	Phone/Channel	Frequency, Type of Aircraft & Capability				
Life Flight - Brewster	1-800-232-0911 911	VMED 29, Rotor, ALS, 24 hr				
Airlift NW - Wenatchee	1-800-426-2430 911	VMED 29, Rotor, ALS, 24 hr				
Medivac Ship	Command 7,8,9,10,11 (Linked)	VMED 29, Rotor, BLS, Daytime				
Mount Rainer Ship	CWICC 1-509-884-3473 x 2	VMED 29, Rotor, BLS, Daytime, Short Haul				
Snohawk 10 - Snohomish	1-800-258-5990 911	VMED 29, Rotor, ALS, Daytime, Hoist				
Spokane County Hoist - Spokane	1-509-532-8930 911	VMED 29, Rotor, ALS, 24 hr, Hoist Daytime Only				
<b>5. Hospitals</b>						
Name	Degrees Decimal Minutes	Travel Time From Fire		Phone	Helipad	Level of Care
Lake Chelan Health 110 S. Apple Blossom Drive Chelan WA	Lat: 47° 50' 20 N	30 Min	3 Hr	509-683-2474	X	Level IV Trauma
	Long: 119° 59' 20 W					
Central Washington Hospital 1201 S. Miller Wenatchee WA	Lat: 47° 24. 43 N	1 Hr	4 Hr	509-433-3115	X	Level II Trauma
	Long: 120° 19. 28 W					
Harborview Medical Center 325 9 <sup>th</sup> Ave Seattle WA	Lat: 47° 36. 24 N	1.5 Hr	6 Hr	206-744-4025	X	Level I Trauma Burn Center
	Long: 122° 19. 45 W					
<b>ICP</b>	<b>EMS Responders &amp; Capability:</b>		<b>James Brown MEDL/Paramedic</b>		360-775-5413	
			<b>Mariann Turley MEDL/AEMT</b>		509-496-9370	
	Equipment Available on Scene:		ALS Kit, AED, O2, OTC meds			
	Medical Emergency Channel:		Command 7, 8, 9, 10, 11 (Linked)			
	ETA for Ambulance to Scene:					
	Air:		NA			
	Ground:		15 Min			
	Approved Heli-Spot:		NA			
	Lat:		NA			
	Long:		NA			
<b>LUCERNE FOB</b>	<b>EMS Responders &amp; Capability:</b>		<b>Ben Meacham MEDL/EMTF (Lucerne FOB)</b>		360-921-3817	
			<b>MEDIC 6 Steve Medina (Boat Medical)</b>		360-556-9568	
			<b>EMT 1 Ivan Huld (Boat Medical)</b>		360-888-9880	
	Equipment Available on Scene:		ALS Kit, AED, O2, OTC meds			
	Medical Emergency Channel:		Command 7, 8, 9, 10, 11 (Linked)			
	ETA for Ambulance to Scene:					
	Air:		2 hr			
	Water/Ground:		3 hr			
	Approved Heli-Spot:					
	Lat:		<b>H5 48° 12.1624' N</b>			
Long:		<b>120° 35.4476' W</b>				
<b>BRANCH I</b>	<b>EMS Responders &amp; Capability:</b>		<b>MEDIC 1 Remington Becker (DIV Z)</b>		360-903-8612	
			<b>MEDIC 3 Adam Lathrop (DIV A)</b>		425-531-0469	
			<b>EMT 2 Aidan Noel (DIV A)</b>		206-458-0103	
			<b>EMT 3 James Franklin (DIV A)</b>		253-312-1374	
			<b>REMS 2 Brayden Kirk + 3 (DIV D)</b>		509-264-8203	
			<b>Kevin Smith MEDL/EMPF (Stehekin FOB)</b>		509-710-0239	
	Equipment Available on Scene:		ALS Kit, Monitor/Defib, O2			
	Medical Emergency Channel:		Command 7, 8, 9,10, 11 (Linked)			
	ETA for Ambulance to Scene:					
	Air:		2 hr			
Water/Ground:		3 hr				
Approved Heli-Spots:						
<b>H1 48° 10.813' N</b>		<b>H11 48° 14.492' N</b>		<b>H15 48° 08.754' N</b>		
<b>120° 31.925' W</b>		<b>120° 35.922' W</b>		<b>120° 29.813' W</b>		
<b>H10 48° 14.099' N</b>		<b>H12 48° 13.381' N</b>		<b>H16 48° 07.744' N</b>		
<b>120° 36.782' W</b>		<b>120° 35.919' W</b>		<b>120° 29.541' W</b>		
Lat:		NA				
Long:		NA				

## MEDICAL PLAN (206 WF)

<b>BRANCH IV</b>	<b>EMS Responders &amp; Capability:</b>	Unstaffed with medical Contingency medical resources can assist
	Equipment Available on Scene:	
	Medical Emergency Channel:	Command 7, 8, 9, 10, 11, 12 (Linked)
	ETA for Ambulance to Scene:	
	Air:	2 hr
	Ground:	3 hr
	Approved Heli-Spot:	NA
	Lat:	NA
Long:	NA	
<b>BRANCH V</b>	<b>EMS Responders &amp; Capability:</b>	<b>MEDIC 2 Joel Bower (CONTINGENCY) 360-461-7390</b> <b>MEDIC 5 Brian Linacre (CONTINGENCY) 301-781-7990</b> <b>MEDIC 7 Steve Drab (CONTINGENCY) 406-600-2059</b> <b>REMS 1 Ray Storm +4 (DIV S) 415 637-0491</b> <b>MEDIC 4 Nathan Etherington (DIV S) 360-969-1251</b>
	Equipment Available on Scene:	ALS Kit, Monitor/Defib, O2, Rescue Gear
	Medical Emergency Channel:	Command 7, 8, 9, 10, 11, 12 (Linked)
	ETA for Ambulance to Scene:	
	Air:	2 hr
	Ground:	3 hr
	Approved Heli-Spot:	
	Lat:	H25 47° 59.200' N
	Long:	120° 16. 521' W
	<b>TBD</b>	<b>EMS Responders &amp; Capability:</b>
Equipment Available on Scene:		
Medical Emergency Channel:		Command 7,8,9,10,11 (Linked)
ETA for Ambulance to Scene:		
Air:		2 hr
Ground:		3 hr
Approved Heli-Spot:		NA
Lat:		NA
Long:	NA	
<b>TBD</b>	<b>EMS Responders &amp; Capability:</b>	TBD
	Equipment Available on Scene:	
	Medical Emergency Channel:	Command 7,8,9,10,11 (Linked)
	ETA for Ambulance to Scene:	
	Air:	
	Ground:	
	Approved Heli-Spot:	NA
	Lat:	NA
Long:	NA	
<b>TBD</b>	<b>EMS Responders &amp; Capability:</b>	TBD
	Equipment Available on Scene:	
	Medical Emergency Channel:	Command 7,8,9,10,11 (Linked)
	ETA for Ambulance to Scene:	
	Air:	
	Ground:	
	Approved Heli-Spot:	NA
	Lat:	NA
Long:	NA	

Prepared By (Medical Unit Leader)	Date	Reviewed By (Safety Officer)	Date
Mariann Turley MEDL	06/27/24	Matt Broyles SOFC	06/27/24
Signature: <i>Mariann Turley</i>		Signature: <i>Matt Broyles</i>	

# MEDICAL PLAN (ICS 206 WF)

Controlled Unclassified Information//Basic

## Medical Incident Report

**FOR A NON-EMERGENCY INCIDENT, WORK THROUGH CHAIN OF COMMAND TO REPORT AND TRANSPORT INJURED PERSONNEL AS NECESSARY.**

**FOR A MEDICAL EMERGENCY: IDENTIFY ON SCENE INCIDENT COMMANDER BY NAME AND POSITION AND ANNOUNCE "MEDICAL EMERGENCY" TO INITIATE RESPONSE FROM IMT COMMUNICATIONS/DISPATCH.**

**Use the following items to communicate situation to communications/dispatch.**

**1. CONTACT COMMUNICATIONS / DISPATCH (Verify correct frequency prior to starting report)**

*Ex: "Communications, Div. Alpha. Stand-by for Emergency Traffic."*

**2. INCIDENT STATUS: Provide incident summary (including number of patients) and command structure.**

*Ex: "Communications, I have a Red priority patient, unconscious, struck by a falling tree. Requesting air ambulance to Forest Road 1 at (Lat./Long.) This will be the Trout Meadow Medical, IC is TFLD Jones. EMT Smith is providing medical care."*

Severity of Emergency / Transport Priority	<input type="checkbox"/> <b>RED / PRIORITY 1 Life or limb threatening injury or illness. Evacuation need is IMMEDIATE</b> <i>Ex: Unconscious, difficulty breathing, bleeding severely, 2° - 3° burns more than 4 palm sizes, heat stroke, disoriented.</i> <input type="checkbox"/> <b>YELLOW / PRIORITY 2 Serious Injury or illness. Evacuation may be DELAYED if necessary.</b> <i>Ex: Significant trauma, unable to walk, 2° - 3° burns not more than 1-3 palm sizes.</i> <input type="checkbox"/> <b>GREEN / PRIORITY 3 Minor Injury or illness. Non-Emergency transport</b> <i>Ex: Sprains, strains, minor heat-related illness.</i>	
Nature of Injury or Illness & Mechanism of Injury		Brief Summary of Injury or Illness <i>(Ex: Unconscious, Struck by Falling Tree)</i>
Transport Request		Air Ambulance / Short Haul/Hoist Ground Ambulance / Other
Patient Location		Descriptive Location & Lat. / Long. (WGS84)
Incident Name		Geographic Name + "Medical" <i>(Ex: Trout Meadow Medical)</i>
On-Scene Incident Commander		Name of on-scene IC of Incident within an Incident <i>(Ex: TFLD Jones)</i>
Patient Care		Name of Care Provider <i>(Ex: EMT Smith)</i>

**3. INITIAL PATIENT ASSESSMENT: Complete this section for each patient as applicable (start with the most severe patient)**

Patient Assessment: See IRPG page 106

Treatment:

**4. TRANSPORT PLAN:**

Evacuation Location (if different): (Descriptive Location (drop point, intersection, etc.) or Lat. / Long.) Patient's ETA to Evacuation Location:

Helispot / Extraction Site Size and Hazards:

**5. ADDITIONAL RESOURCES / EQUIPMENT NEEDS:**

*Example: Paramedic/EMT, Crews, Immobilization Devices, AED, Oxygen, Trauma Bag, IV/Fluid(s), Splints, Rope rescue, Wheeled litter, HAZMAT, Extrication*

**6. COMMUNICATIONS: Identify State Air/Ground EMS Frequencies and Hospital Contacts as applicable**

Function	Channel Name/Number	Receive (RX)	Tone/NAC *	Transmit (TX)	Tone/NAC *
COMMAND					
AIR-TO-GRND					
TACTICAL					

**7. CONTINGENCY: Considerations: If primary options fail, what actions can be implemented in conjunction with primary evacuation method? Be thinking ahead.**

**8. ADDITIONAL INFORMATION: Updates/Changes, etc.**

**REMEMBER: Confirm ETA's of resources ordered. Act according to your level of training. Be Alert. Keep Calm. Think Clearly. Act Decisively.**