

SATURDAY



JUNE 29, 2024

OPERATION PERIOD

Day: 0700 - 2100

COMMUNICATIONS 24-HOUR
EMERGENCY NUMBER

(208) 891-7948

PIONEER CHARGE CODES

USFS: PN RZ79 (1522)

DOI: RZ79

WA DNR: 221-LDW

SEND PHOTOS TO:

2024.pioneer@firenet.gov



Maps, IAP,
Finance / Eval.



PIONEER INCIDENT ACTION PLAN

Pioneer

WA-SES-000173



Notes

Corrected

0308 EMTF Justin Dominguez (1)

7/12

	Ground	Air
FS:		
DNR:		
OSC:		
FSAA:		
DNR AA:		

INCIDENT OBJECTIVES	1. Incident Name	2. Date Prepared	3. Time
	PIONEER	06/28/2024	1900

4. Operational Period

Day Operations: 0700-2100

Strategic Framework:

The Pioneer Fire is a full suppression fire utilizing strategies and tactics that provide the highest likelihood of success while mitigating risks to the responders and public. Extreme terrain prevents direct attack. Indirect lines are being identified and established that reduces risk to responders while protecting identified values including private and federal infrastructure and recreational values.

Management Objectives:

- Ensure the safety and well-being of responders and the public by making timely risk-informed decisions that align with values at risk.
- Protect private and federal infrastructure and recreational values.
- Foster relationships with local cooperators and the public by providing coordinated, accurate, and timely information.
- Coordinate suppression activities with READ's to identify and mitigate current and future impacts to the landscape and resources.
- Treat each other with dignity and respect and act in a professional manner on the fire and in the communities.
- Manage cost commensurate with values at risk by coordinating with the Agency Administrators and Incident Business Advisors.

Operational Objectives:

- Implement an effective suppression strategy utilizing direct attack where and when appropriate to protect values at risk. When fire behavior, terrain, or safety concerns prohibit direct attack, utilize other suppression tactics such as indirect and point protection as appropriate to reduce risk to responders. Take advantage of natural features such as breaks in fuels, topographic features, or changes in weather.
- Establish indirect control lines with the highest probability of success which prevent fire spread into populated areas.
- Communicate with local law enforcement officials to ensure current and potential evacuations are coordinated.

6. Weather Forecast for Period

7. General Safety Message

8. Attachments (mark if attached)

X	Organization List - ICS 203	X	Medical 206WF - 8 Line	X	Finance Message
X	Div. Assignment Lists - ICS 204	X	Safety Message	X	Dutch Creek Protocol
X	Communications Plan - ICS 205		LCES - ICS 215A	X	Phone List
X	Medical Plan - ICS 206	X	Weather Forecast	X	Incident Map(s)
X	Air Operation Summary - ICS 220	X	Fire Behavior	X	Unit Log

Prepared by Planning Section Chief

Nike Crawford

Approved by Incident Commander

Nate LeFevre

ORGANIZATION ASSIGNMENT LIST	
1. Incident Name PIONEER	
2. Date Prepared JUNE 28, 2024	3. Time Prepared 1800
4. Operational Period JUNE 29, 2024 0700 – 2100	
5. Incident Commander and Staff	
Position	Name
Incident Commander	Nate LeFevre
Incident Commander (T)	Steve North
Deputy	Chris Orr
Safety Officer	Matt Broyles / Eric Brown
Information Officer	Cheyne Rossbach
Liaison	Shawn Christianson / Greg Brody (Stehekin) / Mark Suba / Rhonda Marchand (T)
Human Resources	Margaret Dietrich
6. Agency Representatives	
Agency	Name
USFS Oka/Wen Agency Admin	Kari Grover-Wier
USFS Oka/Wen Agency Admin (T)	Paul Willard
DNR Agency Administrator	Larry Leach
DNR Deputy Agency Administrator	Wyatt Leighton
NPS Agency Administrator	Don Striker
NPS Agency Representative	John Goss
NPS FMO	Matt Ellis
READ Liaison	Courtney Rowe
7. Planning Section	
Plans Section Chief	Mike Crawford
Deputy	Debbie Plummer (T)
Resource Unit	Gary Duranceau/ Cari Richardson
Status Check-in	Katelyn Roeder / Charlie Hardy
Situation Unit	Shannon Theall / Ray Moeckel (T)
GIS Specialists	Aleksandar Dozic / Olivia Hughes (T)
Demob Unit	Jay Lord
Documentation Unit	Chris Oelschlager
Incident Meteorologist	Todd Carter
Fire Behavior Analyst	Steve Ziel / Michael Bowden
Long Term Fire Analyst	Brett Smith (T) (Virtual)
8. Logistics Section	
Logistics Section Chief	Franklin Vaughan / Larry Falcon (T)
Deputy	Max Yager (Stehekin) / Cindy Wedekind (Lucerne)
Facilities	Jan Robbins / Kelsy Lipp / Peter Drott (T) / Mike Prevost (T) / Randy Rector (T)

Base Camp Manager	Dave Lefevre/Mac McEntyre (T)
Supply Unit	Vicki Cunningham
IT Specialist	Mike Gascon / Chad Funnemark / Ben Smith (T)
Receiving Distribution	Michael Hanson / Karl Peterson (T) / David Richards (Stehekin)
Ordering Manager	Noe Reyes
Ground Support Unit	Casey Glade / Joe Keady
Communication Unit	Seth Baumgartner / Michael Merrick (T)
Communication Tech.	Keith Schaff / Kevin Judd
Food Unit	Kristy Naughton / John Cody/Phil Moller/Shawna Monroe (T)
Security Manager	Michael Fakier
Medical Unit	Mariann Turley / James Brown / Kevin Smith (T) (Stehekin) / Ben Meacham
9. Operations Section	
OPS Section Chief - Lead	Jon Larson / Jeff Bortner (T)
OPS Section Chief - Planning	Rob Poyner (T)
OPS Section Chief – Field	Seth Merritt
a. Branch I	
Branch Director	Thom Taylor / Josh Verellen (T)
Division A	Seth Missal / James Fields (T)
Division Z	Travis Baker/Frank Heilman (T)
b. Branch II	
Branch Director	Thom Taylor / Josh Verellen (T)
Division D	Ben Lippert / Silas Baffa (T)
c. Branch IV	
Branch Director	Roger Goldman
Division H	Matt Ziegler / Steve Abrams (T)
c. Branch V	
Branch Director	Alfred Wiehl
Division S	Linda Gibson / Holt Jaeger (T)
Division Contingency / Roads	Jennifer Harris/Eric Metzger (T)
Division Boat	Nate Crawford / Seth Ellis (T)
Division Staging	Jon Merager
d. Air Operations Branch	
AOB Director – Planning	Mark Hocken
AOB Director – Field	Ted Hass
10. Finance Section	
Finance Section Chief	Patty Westgate / Lori Bailey (T)
Time Unit	Beverly Hollars / Heather Wall
Procurement	Audrey Mainwaring
Comp/Claims	Kelly Lorenz (Virtual)
Cost Unit	Dede Domingos (Virtual)
Prepared by Cari Richardson, RESL	



Fire Weather Forecast



FORECAST NO: 17

INCIDENT: Pioneer Fire

PREDICTION FOR: 24 Hr Shift

SHIFT DATE: Thursday 6/29/2024

SIGNED: *Todd Carter*

TIME AND DATE ISSUED: 6/28/2024 1900 hrs

Incident Meteorologist (IMET)

Discussion:

Saturday is a transition day as a cold front slowly moves in. Clouds will cover the area ahead of a cold front with winds away from Lake Chelan trending more southerly. Winds should still be able to channel up the lake for most of the day, switching to northwest in the evening. Rain/Thunder chances increase into Saturday afternoon and Sunday but low chances for wetting rain. It will be a little cooler with breezy northwest wind Sunday and Monday.

WEATHER FORECAST FOR TODAY:

SKY/WEATHER: Mostly cloudy. Chance of rain in the afternoon (CWR: 5%). 10 percent chance of Thunderstorms Stehekin area.

MAX TEMPERATURE: 74 to 79 valleys/mid-slopes. 60 to 65 ridges.

MIN RH: 35 to 43 percent valleys/mid-slopes. 45 to 50 percent ridges.

20 FT WINDS:

Lower Valleys: South to Southeast 5 to 10 mph gusts to 15 mph.

Mid-slopes and Ridges: South 10 mph becoming southwest gusts to 20 mph in the afternoon

HAINES INDEX: 2 Very Low.

TRANSPORT WINDS: S 10 mph.

INVERSION: 1000 ft inversion starting to lift at 0800 with a max of 5000 ft by 1300.

TONIGHT:

SKY/WEATHER: Mostly cloudy. A chance of rain. (CWR: 5%)

MIN TEMPERATURE: 52 to 57.

MAX RH: 60 to 70 percent.

20 FT WINDS:

Valleys/Lower Slopes: Becoming Northwest down lake 8 to 12 mph gusts to 20 mph in the evening.

Mid-Slopes and Ridges: Becoming northwest 9 mph gusts to 20 mph..

INVERSION: Developing after 2100 hrs to near 1500 ft.

SUNDAY:

SKY/WEATHER: Partly cloudy with a chance of rain.

MAX TEMPERATURE: 71 to 77 valleys/mid-slopes. 58 to 63 ridges.

MIN RH: 35 to 43 percent valleys/mid-slopes. 50% ridges.

20 FT WINDS:

Lower Valleys: Northwest 8 to 13 mph gusts to 20 mph.

Mid-slopes and Ridges: West to northwest 12 mph gusts to 25 mph.

HAINES INDEX: 2 Very Low.

TRANSPORT WINDS: S 10 mph.

Boating concerns Saturday: South to occasional southwest winds to 10 mph expected on Lake Chelan.

Aviation concerns Saturday: Temp. near 20C at 4000 feet for load calcs. Ridge Winds coming from a southwest direction 10 to 15 kts.

Weather observations can now be texted to 509-319-0474 or emailed to todd.carter@noaa.gov

Fire Behavior Forecast # 18

Name of Incident: Pioneer	Administrative Unit: SE Region DNR / Okanogan-Wenatchee NF
Date & Time Issued: June 28, 2024 @ 2000	Operational Period: DAY 06/29/2024
FBAN: Steve Ziel	Signed: /z/

Assumptions: *After today's cloudy cold front moves through expect a progressive warming and drying trend that should result in increased fire behavior in the coming days. Current fuel conditions will support limited fire spread until sufficient drying occurs. Potential fire behavior is being inhibited by fuel condition and discontinuity. Expect limited burning conditions in exposed fine fuels between 1300-1700. Persistent burning and heat retention in heavy fuels will serve as ignition sources as drying occurs. Live fuels are not contributing to fire spread (yet). Lake effect winds (up or down lake) dominate lower and mid slopes; the fire areas is on a SW aspect with steep side drainages that provide upslope winds. Wind/slope alignment and/or lake wind will influence drying rate and fire spread. Expect up lake till afternoon then down lake winds late.*

Weather Summary

*See attached Fire Weather Forecast

Fire Behavior Summary

Fuels in the fire area are composed of a mosaic of **Timber Litter, Grass, Timber with Understory, and Grass/Shrub** models. The fire is burning in the Rex Creek (2001) fire footprint. Primary tree species include mixed sizes and densities of Douglas Fir and Ponderosa Pine. Local timber litter is compact to fluffy. Brush and understory species include ceanothus, hardwoods, and dog-hair conifer reproduction. Large snags and heavy downed fuel loadings are common throughout all areas. Live woody and herbaceous fuels are seasonally moist, and not contributing to rates of spread; grasses are partially to fully cured. Fuel conditions change by aspect, previous fire history, and soil moisture. Low crown base height (ladder fuels) is present in most of the timbered areas.

Today's potential fire behavior may include isolated pockets/areas of smoldering, creeping, and limited spread with wind/slope alignment. Primary spread mechanism has been backing with rollout, flanking, and limited head fire spread. Heavy fuels are retaining heat and will serve as ignition sources as fine fuels dry from wind and lower RH during the burn period. Early season fuel condition is inhibiting full fire behavior potential – live fuels are moist, some grasses are still curing.

* FFM= 7%-9%, 1000hr. moisture=12%, Woody fuels 170%, Probability of Ignition-40-50%, Max Spotting < 0.2

Fuel Type	Rate of Spread (CH/HR = FPM)	Flame Length Feet	Backing ROS FPM	35 MPH Gust – Ridgetop FPM
...If your work area includes -				
GR2 - Moderate load grass/shrub	2 - 3	<2	< 1	2 - 3
SH2 - Moderate load shrub	1 - 2	2	< 1	5-7
TU5 - High load Timber w/ Understory	8 - 9	6-7	< 1	20-25
TL8 - Long needle timber litter	8 - 9	3-4	< 1	20-25

Specific Assignments:

Div. A – Expect smoldering, backing, and limited flanking in upper Meadow Cr./ Cascade Cr. Heavy fuels will continue to consume.

Div. Z –Ragged edge fire edge on north side of Prince Cr will continue to smolder, flank, and back with rollout.

Other Divisions – Should not be affected by fire activity during the burn period. Monitor smoke direction and amount. Assess fuels.

***IA** – Ensure good size-up before engaging. Assess fire spread potential based on fuel, weather, topography and values at risk.

Air Operations: SW ridgetop wind gusts to 20 mph by afternoon. Monitor ridge top wind transitions; up/down lake winds 10 mph.

Safety

ALWAYS BASE ACTIONS ON CURRENT AND EXPECTED FIRE BEHAVIOR GIVEN THE ENVIRONMENTAL CONDITIONS IN YOUR LOCAL AREA. MAINTAIN SITUATIONAL AWARENESS FOR CHANGING CONDITIONS AS YOU CHANGE LOCATIONS (FUEL, WEATHER, AND TOPOGRAPHY). REMAIN VIGILANT FOR FACTORS THAT ALIGN TO PRODUCE CRITICAL FIRE ENVIRONMENTS (THUNDERSTORMS, FINE FLASHY FUELS, SLOPE...).

*Today's Fire Behavior Forecast contains 629 words written for your situational awareness.

DIVISION ASSIGNMENT LIST			1. Branch I		2. Division / Group A		
3. Incident Name Pioneer			4. Operational Period Date: 06/29/2024 Time: 0700-2100				
5. Operations Personnel							
Operations Chief		Jon Larson / Jeff Bortner(T)		Division / Group Supervisor		Seth Missal / James Fields (T)	
Operations Chief (Plans)		Rob Poyner (T)		Branch Director		Thom Taylor / Josh Verellen (T)	
Safety Officer		Matt Broyles / Eric Brown		Air Attack Supervisor		Chad Bergren	
6. Resources Assigned this Period							
	Strike Team / Task Force / Resource Designator	Leader	Number Persons	Tentative Last Work Day	Drop Off Pt / Time	Pick Up Pt / Time	
1.	O-179 TFLD	Charlie Humbert	1	7/9			
2.	O-180 TFLD	Joe Landburg	1	7/10			
3.	O-266 TFLD (T)	Frank Bojorquez	1	7/12			
4.							
5.	**C-13 CRW1 Vale IHC	Glen Heitz	20	7/4			
6.	O-187 WFM1 Grass Lake	William Johnson	9	7/7			
7.	O-127 FMOD Rainstorm	Kendall Cain	2	7/1			
8.	O-128 FMOD Rainstorm	Mike Lind	2	7/1			
9.	O-129 FELB	Mel Tenneson	1	7/1			
10.							
11.	O-67 MEDIC 3	Adam Lathrop	1	7/4			
12.	O-137 EMT 3	James Franklin	1	7/1			
13.	O-153 EMT 2	Aiden Noel	1	7/1			
14.							
15.	O-174.52 SOFR	George Libercajt	1	7/7			
16.	O-142 SOF2	Kelly Jensen	1	7/1			
17.	O-175 SOFR	Melissa Moore	1	7/4			
18.							
19.							
20.							
7. Control Operations Task: Contain fire spread to the northwest where terrain and fuels allow for highest probability of success. Assess fire perimeter progression to the north and west at higher elevations. Implement point protection efforts on federal & private infrastructure. Purpose: To slow fire progression, provide time for suppression tactics, and continue to prep around critical values. End state: Minimize fire impacts to critical values including private inholdings and Forest Service infrastructure.							
8. Special Instructions <ul style="list-style-type: none"> In large or long term spike camps use helicopters, boats, or pack stock to deliver portable backcountry latrines and remove human waste if necessary. If camp does not have adequate pack, boat, or air support for human waste management, establish community latrines well away from water sources and common areas. Use human waste bags, if necessary. Minimize ground disturbance on the Moore Point and Meadow Creek alluvial fans in order to protect sensitive resources. Ensure hazard mitigations and IWI protocols are in place before taking action. Hose used from Prince Creek to Moore Pt: contaminated with invasive plants. Do not reuse. Backhaul to Moore Pt DP22 and store in "infested hose" area at Moore Pt until decontaminated. ** Denotes available for Initial Attack 							
9. Division / Group Communication Summary							
Function	Frequency	System	Channel	Function	Frequency	System	Channel
Command Repeater	See Comm Plan			Command	See Comm. Plan		
TAC				Air To Ground	See Comm. Plan		
Prepared by (Resource Unit Leader): Name: Gary Duranceau			Approved by (Planning Section Chief) Name: Mike Crawford		Date 6/28/24	Time 1900	

DIVISION ASSIGNMENT LIST		1. Branch I	2. Division / Group Z				
3. Incident Name Pioneer		4. Operational Period Date: 06/29/2024 Time: 0700-2100					
5. Operations Personnel							
Operations Chief	Jon Larson / Jeff Bortner (T)		Division / Group Supervisor	Travis Baker / Frank Heilman (T)			
Operations Chief (Plans)	Rob Poyner (T)		Branch Director	Thom Taylor / Josh Verellen (T)			
Safety Officer	Matt Broyles / Eric Brown		Air Attack Supervisor	Chad Bergren			
6. Resources Assigned this Period							
Strike Team / Task Force / Resource Designator	Leader	Number Persons	Tentative Last Work Day	Drop Off Pt / Time	Pick Up Pt / Time		
1. O-177 TFLD	Brett Matthews	1	7/10	Demobe			
2.							
3. O-182 WFM1 Selway	JT Sohr	14	7/8				
4.							
5. A-78 UR-31	Marshal Wallace	3	7/9				
6.							
7. O-51 MEDIC 1	Remington Becker	1	7/5	7/2			
8. O-307 MEDIC 8	Rick Kelly	1	7/12				
9.							
10. O-174.52 SOFR	George Libercajt	1	7/7				
11.							
12.							
13.							
14.							
15.							
7. Control Operations							
Task: Contain fire spread to the southeast where terrain and fuels allow for high probability of success. Assess fire perimeter progression to the east/southeast at higher elevations.							
Purpose: To slow fire progression, provide time for suppression tactics, and continue to prep around critical values.							
End state: Minimize fire impacts to critical values including private inholdings and Forest Service infrastructure							
8. Special Instructions							
<ul style="list-style-type: none"> In large or long term spike camps use helicopters, boats, or pack stock to deliver portable backcountry latrines and remove human waste if necessary. If camp does not have adequate pack, boat, or air support for human waste management, establish community latrines well away from water sources and common areas. Use human waste bags, if necessary. Ensure hazard mitigations and IWI protocols are in place before taking action. Hose used from Prince Creek to Moore Pt: contaminated with invasive plants. Do not reuse. Backhaul to Moore Pt DP22 and store in "infested hose" area at Moore Pt until decontaminated. 							
9. Division / Group Communication Summary							
Function	Frequency	System	Channel	Function	Frequency	System	Channel
Command Repeater	See Comm Plan			Command	See Comm. Plan		
TAC				Air To Ground	See Comm. Plan		
Prepared by (Resource Unit Leader): Name: Gary Duranceau			Approved by (Planning Section Chief) Name: Mike Crawford		Date 6/28/24	Time 1900	

DIVISION ASSIGNMENT LIST			1. Branch II	2. Division / Group D	Page 1 of 2		
3. Incident Name Pioneer			4. Operational Period Date: 06/29/2024 Time: 0700-2100				
5. Operations Personnel							
Operations Chief	Jon Larson / Jeff Bortner (T)		Division / Group Supervisor	Ben Lippert / Silas Baffa (T)			
Operations Chief (Plans)	Rob Poyner (T)		Branch Director	Thom Taylor / Josh Verellen (T)			
Safety Officer	Matt Broyles / Eric Brown		Air Attack Supervisor	Chad Bergren			
6. Resources Assigned this Period							
	Strike Team / Task Force / Resource Designator	Leader	Number Persons	Tentative Last Work Day	Drop Off Pt / Time	Pick Up Pt / Time	
1.	O-183 TFLD	Harley Hamman	1	7/6	Stehekin	Stehekin	
2.	O-251 TFLD	Aaron Merritt	1	7/3	Stehekin	Stehekin	
3.							
4.	O-170 THSP	Tanya Neider	1	7/3			
5.							
6.	O-122 HECM	Nick DePanlo	4	7/1	Stehekin	Stehekin	
7.							
8.	O-147 SMOD LNP CREW 76	Sara Martinez	7	7/3	Stehekin	Stehekin	
9.	O-148 SMOD HVP CREW 1	Brent Webb	10	7/3	Stehekin	Stehekin	
10.	O-278 SMOD Crew 84	Geoff Hibbs	3	7/10	Stehekin	Stehekin	
11.	**O-218 WFM2 Olympic	Jonah Gray	10	7/6	Stehekin	Stehekin	
12.							
13.	O-184 FELB	Marty Cozart	1	7/6	Stehekin	Stehekin	
14.	O-186 FMOD Kintner Timber	Cory Kintner	2	7/6	Stehekin	Stehekin	
15.	O-185 FMOD Brothers Fire	Levi Merritt	2	7/6	Stehekin	Stehekin	
16.							
17.							
18.							
19.							
7. Control Operations Task: Continue construction of contingency lines around the community of Stehekin. Purpose: Minimize fire impacts to critical values including private inholdings, the community of Stehekin, and Forest Service infrastructure. End state: Critical values including private inholdings, the community of Stehekin, and Forest Service infrastructure are not impacted by the Pioneer fire, while minimizing fire impacts and acres burned utilizing historic wildfire control features and natural barriers.							
8. Special Instructions							
<ul style="list-style-type: none"> • In large or long term spike camps use helicopters, boats, or pack stock to deliver portable backcountry latrines and remove human waste if necessary. If camp does not have adequate pack, boat, or air support for human waste management, establish community latrines well away from water sources and common areas. Use human waste bags, if necessary. • All operational personnel working on USFS lands will need to conduct a thorough inspection for invasive species seeds on boots including laces, clothing, and gear prior to entering NPS lands. • Only fresh (direct from the cache) hose should be utilized on NPS lands to prevent the transport of invasive species seeds. • Hose used on USFS lands should not be used on NPS lands and hose used on NPS lands should not be used on USFS lands to prevent the spread of invasives species seeds. • Cargo loads being transported onto NPS lands should be inspected for invasive weed seed prior to flight. • Ensure hazard mitigations and IWI protocols are in place before taking action. • NPS Resource Avoidance Area Flagging is yellow with red polka dots. Contact NPS READs before working in areas where this flagging is present. • ** Denotes available for Initial Attack 							
9. Division / Group Communication Summary							
Function	Frequency	System	Channel	Function	Frequency	System	Channel
Command Repeater	See Comm Plan			Command	See Comm. Plan		
TAC				Air To Ground	See Comm. Plan		
Prepared by (Resource Unit Leader): Name: Gary Duranceau			Approved by (Planning Section Chief) Name: Mike Crawford		Date 6/28/24	Time 1900	

DIVISION ASSIGNMENT LIST			1. Branch II		2. Division / Group D			Page 2 of 2
3. Incident Name Pioneer			4. Operational Period Date: 06/29/2024 Time: 0700-2100					
5. Operations Personnel								
Operations Chief		Jon Larson / Jeff Bortner (T)		Division / Group Supervisor		Ben Lippert / Silas Baffa (T)		
Operations Chief (Plans)		Rob Poyner (T)		Branch Director		Thom Taylor / Josh Verellen (T)		
Safety Officer		Matt Broyles / Eric Brown		Air Attack Supervisor		Chad Bergren		
6. Resources Assigned this Period								
	Strike Team / Task Force / Resource Designator	Leader	Number Persons	Tentative Last Work Day	Drop Off Pt / Time	Pick Up Pt / Time		
20.	O-125 READ	Cedar Drake	1	7/1	Stehekin	Stehekin		
21.	O-166 REAF	Jordan Spaak	1	7/6	Stehekin	Stehekin		
22.	O-235 REAF	Cade Simpson	1	7/7	Stehekin	Stehekin		
23.	O-167 ARCH	Jason Wright	1	7/12	Stehekin	Stehekin		
24.	O-168 ARCH	Ernest Wingate	1	7/6	Stehekin	Stehekin		
25.								
26.	O-165 REMS 2	Brayden Kirk	4	7/10	Stehekin	Stehekin		
27.	O-174.79 MEDL (T)	Kevin Smith	1	7/2	Stehekin	Stehekin		
28.								
29.	O-174.88 SOFR	Leo Engleson	1	7/7	Stehekin	Stehekin		
30.								
31.	E-119 Driver	Stephen Bouche	1	7/3				
32.								
33.								
34.								
35.								
7. Control Operations								
Task: Continue construction of contingency lines around the community of Stehekin.								
Purpose: Minimize fire impacts to critical values including private inholdings, the community of Stehekin, and Forest Service infrastructure.								
End state: Critical values including private inholdings, the community of Stehekin, and Forest Service infrastructure are not impacted by the Pioneer fire, while minimizing fire impacts and acres burned utilizing historic wildfire control features and natural barriers.								
8. Special Instructions								
<ul style="list-style-type: none"> • In large or long term spike camps use helicopters, boats, or pack stock to deliver portable backcountry latrines and remove human waste if necessary. If camp does not have adequate pack, boat, or air support for human waste management, establish community latrines well away from water sources and common areas. Use human waste bags, if necessary. • All operational personnel working on USFS lands will need to conduct a thorough inspection for invasive species seeds on boots including laces, clothing, and gear prior to entering NPS lands. • Only fresh (direct from the cache) hose should be utilized on NPS lands to prevent the transport of invasive species seeds. • Hose used on USFS lands should not be used on NPS lands and hose used on NPS lands should not be used on USFS lands to prevent the spread of invasives species seeds. • Cargo loads being transported onto NPS lands should be inspected for invasive weed seed prior to flight. • Ensure hazard mitigations and IWI protocols are in place before taking action. • NPS Resource Avoidance Area Flagging is yellow with red polka dots. Contact NPS READs before working in areas where this flagging is present. • ** Denotes available for Initial Attack. 								
9. Division / Group Communication Summary								
Function	Frequency	System	Channel	Function	Frequency	System	Channel	
Command Repeater	See Comm Plan			Command	See Comm. Plan			
TAC				Air To Ground	See Comm. Plan			
Prepared by (Resource Unit Leader): Name: Gary Duranceau			Approved by (Planning Section Chief): Name: Mike Crawford			Date: 6/28/24	Time: 1900	

DIVISION ASSIGNMENT LIST			1. Branch IV		2. Division / Group H	
3. Incident Name Pioneer			4. Operational Period Date: 06/29/2024 Time: 0700-2100			
5. Operations Personnel						
Operations Chief		Jon Larson / Jeff Bortner (T)		Division / Group Supervisor		Matt Ziegler / Steve Abrams (T)
Operations Chief (Plans)		Rob Poyner (T)		Branch Director		Roger Goldman
Safety Officer		Matt Broyles / Eric Brown		Air Attack Supervisor		Chad Bergren
6. Resources Assigned this Period						
	Strike Team / Task Force / Resource Designator	Leader	Number Persons	Tentative Last Work Day	Drop Off Pt / Time	Pick Up Pt / Time
1.	O-112 TFLD	David Ortlund	1	7/1		
2.	O-113 TFLD (T)	Gavin Young	1	7/1		
3.						
4.	E-101 SKG2 NW Diesel Dudes	John Lotze	2	7/3		
5.	E-102 SKG2 Dukes Equipment	Matt Sveen	2	6/30		
6.	E-103 MBM2 Marcon Timber	Dave Landes	2	7/1		
7.	E-104 MBM2 Havillah Logging	Albert Johnson	2	7/1		
8.	E-105 MBM2 Justin Pitts	Justin Pitts	2	7/1		
9.						
10.	O-267 SOFR	Tom Talbot	1	7/10		
11.						
12.						
13.						
14.						
15.						
16.						
17.						
18.						
19.						
20.						
7. Control Operations Task: Complete a comprehensive inventory of critical values, proposed control line options to protect those values and the risk to responders associated with those actions in SA4. Purpose: To analyze the strategy as probability vs success. End state: A long term durable strategic plan for the Pioneer Fire.						
8. Special Instructions						
<ul style="list-style-type: none"> In large or long term spike camps use helicopters, boats, or pack stock to deliver portable backcountry latrines and remove human waste if necessary. If camp does not have adequate pack, boat, or air support for human waste management, establish community latrines well away from water sources and common areas. Use human waste bags, if necessary. Ensure hazard mitigations and IWI protocols are in place before taking action. Draft sites must be reviewed by READ. 						
9. Division / Group Communication Summary						
Function	Frequency	System	Channel	Function	Frequency	System
Command Repeater		See Comm Plan		Command		See Comm. Plan
TAC				Air To Ground		See Comm. Plan
Prepared by (Resource Unit Leader): Name: Gary Duranceau			Approved by (Planning Section Chief) Name: Mike Crawford		Date 6/28/24	Time 1900

DIVISION ASSIGNMENT LIST		1. Branch V	2. Division / Group S	Page 1 of 2			
3. Incident Name Pioneer		4. Operational Period Date: 06/29/2024 Time: 0700-2100					
5. Operations Personnel							
Operations Chief	Jon Larson / Jeff Bortner (T)		Division / Group Supervisor	Linda Gibson / Holt Jaeger (T)			
Operations Chief (Plans)	Rob Poyner (T)		Branch Director	Alfred Wiehl			
Safety Officer	Matt Broyles / Eric Brown		Air Attack Supervisor	Chad Bergren			
6. Resources Assigned this Period							
Strike Team / Task Force / Resource Designator	Leader	Number Persons	Tentative Last Work Day	Drop Off Pt / Time	Pick Up Pt / Time		
1. O-110 TFLD	Shane Clifton	1	6/30	Safe Harbor	Safe Harbor		
2. O-111 TFLD (T)	Lars Olson	1	6/30	Camp 4 Spike	Camp 4 Spike		
3. O-178 TFLD	Andrew Schaffran	1	7/9				
4. O-249 TFLD (T)	Mark Harper	1	7/9				
5. O-126 FMOD Fire Contracting Serv.	Ethan Wilson	2	7/1	Camp 4 Spike	Camp 4 Spike		
6. O-130 FELB	Rob Winkler	1	7/2	Camp 4 Spike	Camp 4 Spike		
7.							
8. **C-10 CR2I Methow Valley IA	Benjamin Boucher	23	6/29	Safe Harbor	Safe Harbor		
9. **C-18 CR2I Colville	Jacob Morse	21	7/6	Camp 4 Spike	Camp 4 Spike		
10.							
11. **E-118 ENG6 Little Pend Oreille	Thomas Boggs	3	7/1	Camp 4 Spike	Camp 4 Spike		
12. E-118 HEQB	Dillon Bigler	1	7/1	Camp 4 Spike	Camp 4 Spike		
13. E-118 HEQB (T)	Pedro Gomez	1	7/1	Camp 4 Spike	Camp 4 Spike		
14.							
15. E-73 WTS1 Strand Tenders	Wade Strand	1	7/11	Camp 4 Spike	Camp 4 Spike		
16. E-74 WTS2 MVP Team	Dale Conrad	1	7/12				
17. E-75 WTS2 David Rains	Ron Laymance	1	6/30				
18. E-76 WTS2 Mountain View Wildfire	Wick Fife	1	7/1				
19. E-78 WTS2 King Hydroseeding	Don Warden	1	7/10	Camp 4 Spike	Camp 4 Spike		
20. E-83 WTS2 King Hydroseeding	Joe Ivie	1	7/11				
21. E-156 WTS2 King Hydroseeding	Wes Bodenhamer	1	7/8				
22.							
23.							
7. Control Operations Task: Implementation of control from South Navaree CG to Lake Chelan. Increase ingress and egress to the fire area. Purpose: To establish a barrier to fire to the east of Safety Harbor Creek. End state: Control line anchored from South Navaree CG to Lake Chelan.							
8. Special Instructions							
<ul style="list-style-type: none"> Ensure hazard mitigations and IWI protocols are in place before taking action. ** Denotes available for Initial Attack 							
9. Division / Group Communication Summary							
Function	Frequency	System	Channel	Function	Frequency	System	Channel
Command Repeater	See Comm Plan			Command	See Comm. Plan		
TAC				Air To Ground	See Comm. Plan		
Prepared by (Resource Unit Leader): Name: Gary Duranceau			Approved by (Planning Section Chief): Name: Mike Crawford		Date: 6/28/24	Time: 1900	

DIVISION ASSIGNMENT LIST			1. Branch V	2. Division / Group S	Page 2 of 2		
3. Incident Name Pioneer			4. Operational Period Date: 06/29/2024 Time: 0700-2100				
5. Operations Personnel							
Operations Chief		Jon Larson / Jeff Bortner (T)		Division / Group Supervisor		Linda Gibson / Holt Jaeger (T)	
Operations Chief (Plans)		Rob Poyner (T)		Branch Director		Alfred Wiehl	
Safety Officer		Matt Broyles / Eric Brown		Air Attack Supervisor		Chad Bergren	
6. Resources Assigned this Period							
	Strike Team / Task Force / Resource Designator		Leader	Number Persons	Tentative Last Work Day	Drop Off Pt / Time	Pick Up Pt / Time
24.	O-43 REMS1		Ray Storm	5	7/9	Camp 4 Spike	Camp 4 Spike
25.							
26.	O-141 SOFR		Kevin Pfister	1	7/2	Camp 4 Spike	Camp 4 Spike
27.							
28.	E-18 UTV						
29.	E-93 UTV						
30.	E-94 UTV						
31.	E-148 UTV						
32.	E-149 UTV						
33.							
34.							
35.							
36.							
37.							
38.							
39.							
40.							
41.							
42.							
43.							
44.							
45.							
46.							
47.							
7. Control Operations Task: Implementation of control from South Navaree CG to Lake Chelan. Increase ingress and egress to the fire area. Purpose: To establish a barrier to fire to the east of Safety Harbor Creek. End state: Control line anchored from South Navaree CG to Lake Chelan.							
8. Special Instructions <ul style="list-style-type: none"> • Ensure hazard mitigations and IWI protocols are in place before taking action. • ** Denotes available for Initial Attack 							
9. Division / Group Communication Summary							
Function	Frequency	System	Channel	Function	Frequency	System	Channel
Command Repeater		See Comm Plan		Command		See Comm. Plan	
TAC				Air To Ground		See Comm. Plan	
Prepared by (Resource Unit Leader): Name: Gary Duranceau			Approved by (Planning Section Chief) Name: Mike Crawford			Date 6/28/24	Time 1900

DIVISION ASSIGNMENT LIST		1. Branch	2. Division / Group				
		V	Contingency/Roads Page 1 of 2				
3. Incident Name		4. Operational Period					
Pioneer		Date: 06/29/2024		Time: 0700-2100			
5. Operations Personnel							
Operations Chief	Jon Larson / Jeff Bortner (T)	Division / Group Supervisor	Jennifer Harris / Eric Metzger (T)				
Operations Chief (Plans)	Rob Poyner (T)	Branch Director	Alfred Wiehl / Roger Goldman				
Safety Officer	Matt Broyles / Eric Brown	Air Attack Supervisor	Chad Bergren				
6. Resources Assigned this Period							
Strike Team / Task Force / Resource Designator	Leader	Number Persons	Tentative Last Work Day	Drop Off Pt / Time	Pick Up Pt / Time		
1. O-83 TFLD	Mark Lewis	1	6/29				
2. O-106 TFLD	Andy Hall	1	6/29	To Sienna			
3. **O-239 TFLD	Kory Garrie	1	7/9				
4. O-245 TFLD	Noah Daniels	1	7/10				
5. O-114 TFLD (T)	TJ Whitehall	1	7/1				
6. **O-257 TFLD (T)	Craig McDonald	1	7/9				
7.							
8. O-115 HEQB	Garrett Hanson	1	6/30				
9. O-241 HEQB	Jason Green	1	7/9				
10. O-242 HEQB	Travis Parker	1	7/9				
11. O-243 HEQB	Everardo Santillan	1	7/8				
12. O-116 HEQB (T)	Tyler Meyer	1	6/30				
13. O-117 HEQB (T)	Ian Fox	1	6/30				
14.							
15. **C-19 CR2I Cle Elum RD	Cris Machado	18	7/8				
16. C-23 CR2I SRV1	Jaime Medrano	23	7/11				
17.							
18. **E-117 ENG6 Wenatchee River	Nicholas Gonzales	5	7/3				
19.							
20. E-157 WTS2 Pine Mountain Exc.	Bob Goss	1	7/8				
21. E-172 WTS2 Upper Valley	Joseph Schoenmakers	1	7/12				
22. E-173 WTS2 Ridgetop Iron	Tim Whitehurst	1	7/12				
23. E-174 WTS2 Upper Valley	Jim Smith	1	7/12				
24. E-154 SKG2 Western	Rick Lauman	2	7/8				
25. E-155 SKG2 Mountain View	Shawn Beaman	2	7/8				
26.							
7. Control Operations							
<p>Task: Scout proposed control lines at Oss Peak and Johnson Creek. Assess structures from Deer Point to Mitchel Creek. Implement control lines from H41 to DP76. <i>Continue road maintenance on 4330 and 4010.</i></p> <p>Purpose: To protect critical values at risk.</p> <p>End state: To have established control lines in place that correspond to Pioneer Fire strategic plan.</p>							
8. Special Instructions							
<ul style="list-style-type: none"> Ensure hazard mitigations and IWI protocols are in place before taking action. Contingency resources working DIV H: Draft sites must be reviewed by READ. ** Denotes available for Initial Attack. <p><i>Work with READS to maintain resource protection.</i></p>							
9. Division / Group Communication Summary							
Function	Frequency	System	Channel	Function	Frequency	System	Channel
Command Repeater		See Comm Plan		Command		See Comm. Plan	
TAC				Air To Ground		See Comm. Plan	
Prepared by (Resource Unit Leader):			Approved by (Planning Section Chief)		Date	Time	
Name: Gary Duranceau			Name: Mike Crawford		6/28/24	1900	

DIVISION ASSIGNMENT LIST			1. Branch V		2. Division / Group Contingency/Roads			Page 2 of 2		
3. Incident Name Pioneer				4. Operational Period Date: 06/29/2024 Time: 0700-2100						
5. Operations Personnel										
Operations Chief		Jon Larson / Jeff Bortner (T)		Division / Group Supervisor		Jennifer Harris / Eric Metzger (T)				
Operations Chief (Plans)		Rob Poyner (T)		Branch Director		Alfred Wiehl / <i>Roger Goldman</i>				
Safety Officer		Matt Broyles / Eric Brown		Air Attack Supervisor		Chad Bergren				
6. Resources Assigned this Period										
Strike Team / Task Force / Resource Designator		Leader		Number Persons	Tentative Last Work Day	Drop Off Pt / Time		Pick Up Pt / Time		
27.	E-92 DZR3 Batchelor Excavation		Al Steele	2	6/30	7/11				
28.	E-100 DZR4 Douglas Logging		Steve Douglas	2	7/1					
29.	E-143 EXC2 Delange Enterprises		Pete Delange	2	7/5					
30.	E-71 GRD2 Scotts Excavating		Mark Rowe	2	7/4					
31.	E-72 GRD2 Scotts Excavating		Wyatt Radke	2	7/13					
32.	E-69 FTRA Morris Forestry		Jake Wilcox	1	7/7					
33.	E-151 MBM2 Dukes		Chris Boles	2	7/8					
34.	E-152 MBM2 Axsus		John Cisneros	2	7/10					
35.										
36.	O-68 MEDIC 2		Joel Bower	1	7/3	To Sierra				
37.	O-76 MEDIC 5		Brian Linacre	1	7/7					
38.	O-271 MEDIC 7		Steve Drab	1	7/11					
39.										
40.	O-189 SOF2		John Nickey	1	7/1					
41.										
42.	E-19 UTV									
43.	E-44 UTV									
44.										
45.										
7. Control Operations										
<p>Task: Scout proposed control lines at Oss Peak and Johnson Creek. Assess structures from Deer Point to Mitchel Creek. Implement control lines from H41 to DP76. <i>Continue road maintenance on 4330 and 4010.</i></p> <p>Purpose: To protect critical values at risk.</p> <p>End state: To have established control lines in place that correspond to Pioneer Fire strategic plan.</p>										
8. Special Instructions										
<ul style="list-style-type: none"> • Ensure hazard mitigations and IWI protocols are in place before taking action. • Contingency resources working DIV H: Draft sites must be reviewed by READ. • ** Denotes available for Initial Attack • <i>Work with READs to maintain resource protection.</i> 										
9. Division / Group Communication Summary										
Function	Frequency	System		Channel	Function	Frequency	System		Channel	
Command Repeater	See Comm Plan				Command	See Comm. Plan				
TAC					Air To Ground	See Comm. Plan				
Prepared by (Resource Unit Leader): Name: Gary Duranceau				Approved by (Planning Section Chief) Name: Mike Crawford			Date 6/28/24		Time 1900	

0330 HEQB Asa Ray (1) 7/6
0337 HEQB(T) Brandon Humphreys (1) 7/6

DIVISION ASSIGNMENT LIST		1. Branch V	2. Division / Group Staging				
3. Incident Name Pioneer		4. Operational Period Date: 06/29/2024				Time: 0700-2100	
5. Operations Personnel							
Operations Chief	Jon Larson / Jeff Bortner (T)		Division / Group Supervisor	Jon Merager			
Operations Chief (Plans)	Rob Poyner (T)		Branch Director	Alfred Wiehl			
Safety Officer	Matt Broyles / Eric Brown		Air Attack Supervisor	Chad Bergren			
6. Resources Assigned this Period							
	Strike Team / Task Force / Resource Designator	Leader	Number Persons	Tentative Last Work Day	Drop Off Pt / Time	Pick Up Pt / Time	
1.	E-170 DUMP Boulder Creek	Mitch Jack	1	7/12			
2.							
3.							
4.							
5.							
6.							
7.							
8.							
9.							
10.							
11.							
12.							
13.							
14.							
15.							
16.							
17.							
18.							
19.							
20.							
7. Control Operations Task: Remain ready and available for divisions as needed. Purpose: To assist divisions as needed to complete missions as appropriate. End state: Support suppression efforts as needed to project communities.							
8. Special Instructions							
9. Division / Group Communication Summary							
Function	Frequency	System	Channel	Function	Frequency	System	Channel
Command Repeater	See Comm Plan			Command	See Comm. Plan		
TAC				Air To Ground	See Comm. Plan		
Prepared by (Resource Unit Leader): Name: Gary Duranceau			Approved by (Planning Section Chief) Name: Mike Crawford		Date	Time	
					6/28/24	1900	

DIVISION ASSIGNMENT LIST			1. Branch	2. Division / Group				
3. Incident Name Pioneer			4. Operational Period Date: 06/29/2024 Time: 0700-2100					
5. Operations Personnel								
Operations Chief		Jon Larson / Jeff Bortner (T)		Division / Group Supervisor		Nate Crawford / Seth Ellis (T)		
Operations Chief (Plans)		Rob Poyner (T)		Branch Director				
Safety Officer		Matt Broyles / Eric Brown		Air Attack Supervisor		Chad Bergren		
6. Resources Assigned this Period								
1.	Strike Team / Task Force / Resource Designator	Leader	Number Persons	Tentative Last Work Day	Drop Off Pt / Time	Pick Up Pt / Time		
1.	O-161 TFLD Boat Coordinator	Cameron Chambers	1	7/3	Lucerne	Lucerne		
2.	O-50 TFLD	Todd Olson	1	6/30	Lucerne	Lucerne		
3.	O-160 TFLD	Brian Turner	1	7/3	ICP	ICP		
4.	O-248 TFLD (T)	Jason Ward	1	7/9	Lucerne	Lucerne		
5.	O-263 TFLD (T)	Aaron Pedersen	1	7/12	ICP	ICP		
6.	O-163 HEQB (T)	Emma Ahlrichs	1	7/3	Lucerne	Lucerne		
7.								
8.	E-1 TBOT WA-NCP NPS	Sonja Shaw	1		Stehekin	Stehekin		
9.	E-3 TBOT Chelan Co. F&R#7	Chris Colbert	1		Lucerne	Lucerne		
10.	E-12 TBOT WA-OWF Chelan RD	Dick Gordon	1		FS Dock	FS Dock		
11.	E-91 TBOT DNR Mud Puppy	Curt Hekkila	1		Lucerne	Lucerne		
12.	E-98 TBOT Chelan County Sheriffs	Rich Magnussen	1		FS Dock	FS Dock		
13.	E-43 TBOT Llama Boat	Gayle Thomas	1		FS Dock	FS Dock		
14.	E-120 TBOT Pilgram	Justin Gavin	1	7/11	Lucerne	Lucerne		
15.								
16.	O-136 MEDIC 6	Steve Medina	1	7/8	Lucerne	Lucerne		
17.	O-152 EMT 1	Ivan Huld	1	7/1	Lucerne	Lucerne		
18.								
19.	<i>E121 Old Maid</i>	<i>Christopher</i>						
20.		<i>Dylan (2)</i>		<i>7/12</i>				
21.								
22.								
23.								
7. Control Operations								
Task: Contain fire spread to the southwest where terrain and fuels allow for high probability of success. Assess fire perimeter progression to the west/southwest at higher elevations.								
Purpose: To slow fire progression, provide time for suppression tactics, and prep around critical values.								
End state: Minimize fire impacts to critical values including private inholdings and Forest Service infrastructure								
8. Special Instructions								
<ul style="list-style-type: none"> In large or long-term spike camps use helicopters, boats, or pack stock to deliver portable backcountry latrines and remove human waste if necessary. If camp does not have adequate pack, boat, or air support for human waste management, establish community latrines well away from water sources and common areas. Use human waste bags, if necessary. Ensure hazard mitigations and IWI protocols are in place before taking action. 								
9. Division / Group Communication Summary								
Function	Frequency	System	Channel	Function	Frequency	System	Channel	
Command Repeater		See Comm Plan		Command		See Comm. Plan		
TAC				Air To Ground		See Comm. Plan		
Prepared by (Resource Unit Leader): Name: Gary Duranceau			Approved by (Planning Section Chief) Name: Mike Crawford		Date	6/28/24	Time	1900

AIR OPERATIONS SUMMARY ICS-220

Incident Name / Number: Pioneer / WA-SES-000173
Sunrise / Sunset / Airport: 05:05 / 21:03 / S10
Pumpkin: 21:33

General Remarks, Safety Notes, Hazards, Air Operations Special Equipment, etc.:
 *Order All Aircraft through Command to Helibase.
 *Sanitize Buckets before changing water sources.
 *Clear drop area/line before initiating drop sequence.
 *Be cognizant of all overhead and environmental hazards while working with Aircraft.
 *All GPS is to be collected in DMH
 *** WINDS: return to helibase if winds become unmanageable.
 *Aviation daily cost to: 2024.pioneer.finance@firenet.gov
 *Aviation daily cost to: pioneer/helibase2024@gmail.com

Time Prepared: 18:00
Shutdown: 21:00

Helibase Information:
Pioneer/ Helibase Valley Helibase:
 Location: 48 25 567 N
 47 51 96 N
 119 56 56 W
Pioneer HB (Chelan):
 Phone (971) 762-8575
Valley HB Phone (Methow):
 (971) 727-7255

Date Prepared: 6/28/2024
Operational Period - Date: 6/29/2024

Prepared By: Mark Hocken, AOB
Operational Period - Time: 0700-2100

Medivac Ship Information:
Short Haul 125CL
 call helibase to launch
 Make/Model AS-350B3e
 Location: Chelan
 Request Procedure for This Aircraft:
 Communications on Command,
Short-Haul North Cascade N-125CL
 Order through Helibase/CWICC,
 CWICC (509) 884-3473 x 2
 40 min to 1 hour response on to 2100

Incident Frequencies	RX	Tone	TX	Tone	AM/FM
Air to Air Primary (A-8)	123.4000		123.4000		AM
Air to Air Secondary (A-9)	118.2750		118.2750		AM
A/G Pri Tactical (A-10)	169.1500		169.1500		FM
A/G Sec Operational (A-11)	168.4000		168.4000		FM
TOLC	166.8125		166.8125		FM
DECK	163.1000		163.1000		FM
COMMAND					See ICS 205 Communications Plan

Position	Name	Phone
AOBD (Planning)	Mark Hocken	(541) 261-1085
AOBD (Field)	Ted Hass	(541) 646-1318
ASGS	Dave Moore	(513) 616-9192
ASGS-1	Ben Thayer	(208) 830-1636
ASGS-1	Lance Jorg	(971) 291-7443
HEBM Pioneer	Anika Pella	(406) 366-0938
HEBM Valley	Randy Mcandress	(509) 668-7243
ATGS	Jerry Messenger	(541) 308-0907
HLCO	Chad Bergren	(541) 219-2594
HLCO 1	Tim Beck	(520) 236-1551
Short Haul NC SCL	John Podliewait	(208) 830-4436
UAS	Marshall Wallace	(509) 670-6365
HLCO	Jamie Lilienthal	(541) 529-9492
Aircraft Desk	Aircraft Desk	(509) 884-3473 x2
Cory Dolberry	Cory Dolberry	(509) 668-2801

FAA #	TYPE	Make/Model	Airport	Avail	Remarks
H-205TK	2	Bell 205A	Chelan	0800	BKTILL call CWICC
HB-344RA (A-45)	1	CH-47D	Valley	0800	BKTILL lend/lease to Wenatchee CWICC IA Fire

FAA #	TYPE	Make/Model	Base	Start	Avail	Remarks
H-811KA	2	Bell B-212HP	Chelan	0800	0900	BKTILL ETA midday
H-669H	2	Bell 205 A1 +++	Chelan	0800	0900	BKTILL/Recon
H-684H (A-46)	3	407	Chelan	0800	0900	BKTILL/Recon/HLCO
H-544AS (A-60)	3	AS350B3	Chelan	0800	0900	HLCO/Recon
H-407RL (A-1)	3	407	Chelan	0800	0900	Short Haul, recon.
H-125CL	3	AS350B3e	Wenatchee	0800	0900	Short Haul, Recon

Call Sign	Type	Make/Model	Base	Start	Avail	Remarks
UR-31	3	Atix	Lucame	0600	2200	IR/PSD

FAA #	Call Sign	Make/Model	Base	Start	Avail	Remarks
N-586DV (A-42)	610	Commander	WEN	0900	1000	Assigned ATGS
H-544AS (A-60)	4AS	AS350B3	Chelan	0800	0900	Assigned HLCO
N-197GB	617	Commander	Wenatchee	0900	1000	Wenatchee IA (not assigned)

HELICOPTERS - GACC Prep and Lend/lease

FIXED WING A/HLCO

INCIDENT RADIO COMMUNICATIONS PLAN (ICS 205)

Controlled Unclassified Information//Basic

1. Incident Name:		2. Date/Time Prepared:		3. Operational Period:							
PIONEER		Date: 06/28/2024 Time: 1600		Date/Time From: 06/29/2024 0600		Date/Time To: 06/30/2024 0600					
4. Basic Radio Channel Use:											
Zone Group	Ch #	Function	Channel Name/Trunked Radio	Assignment	RX Freq	RX Tone/NAC	TX Freq	TX Tone/NAC	Mode (A, D, or M)	Remarks	
	1	TACTICAL	TAC 1	DIV A & S	168.0500	123.0	168.0500	123.0	A		
	2	TACTICAL	TAC 2	DIV D	168.2000	123.0	168.2000	123.0	A		
	3	TACTICAL	TAC 3	DIV Z	168.6000	123.0	168.6000	123.0	A		
	4	TACTICAL	TAC 4	DIV H / CONT	166.7250	123.0	166.7250	123.0	A		
	5	TACTICAL	TAC 5	ROADS	166.7750	123.0	166.7750	123.0	A		
	6	TACTICAL	TAC 6	BOAT	168.2500	123.0	168.2500	123.0	A		
	7	COMMAND	CMD 7	ALL	168.4750	123.0	165.4000	123.0	A	CHELAN BUTTE	
	8	COMMAND	CMD 8	ALL	169.5375	123.0	164.7125	123.0	A	OLD MAID MT	
	9	COMMAND	CMD 9	ALL	170.4500	123.0	168.1000	123.0	A	MOORE MT	
	10	COMMAND	CMD 10	ALL	170.0125	123.0	165.2500	123.0	A	SLIDE RIDGE	
	11	COMMAND	CMD 11	ALL	170.4125	123.0	165.9625	123.0	A	FOX PEAK	
	12	TACTICAL	A/G PRI	ALL DIVS	169.1500	000.0	169.1500	000.0	A		
	13	AIR TO GROUND	A/G SEC	ALL DIVS	168.4000	000.0	168.4000	000.0	A		
	14	AIR TO GROUND	A/G 3	ALL DIVS	166.6125	000.0	166.6125	000.0	A	TAKE OFF LANDING CHANNEL	
	15	AIR TO GROUND	VMED 29	ALL DIVS	155.3475	156.7	155.3475	156.7	A	AIR EMS COORDINATION	
	16	AIR TO GROUND	AIRGUARD	ALL DIVS	168.6250	000.0	168.6250	110.9	A	EMERGENCY AIRCRAFT CONTACT	
5. Special Instructions: 24 hour staffing: PIONEER COMMUNICATIONS PHONE NUMBER: (208) 891-7948 / CURRENT CLONE "PIE 6-21"											
6. Prepared By COM1				Name: SETH BAUMGARTEN				Signature: <i>Seth Baumgarten</i>			
ICS 205				IAP Page				Date/Time: 6/28/24 1600			

INCIDENT RADIO COMMUNICATIONS PLAN (ICS 205)

Controlled Unclassified Information//Basic

1. Incident Name:		2. Date/Time Prepared:		3. Operational Period:						
PIONEER Branch IV & V		Date: 06/28/2024 Time: 1600		Date/Time From: 06/29/2024 0600 Date/Time To: 06/30/2024 0600						
4. Basic Radio Channel Use:										
Zone Group	Ch #	Function	Channel Name/Trunked Radio	Assignment	RX Freq	RX Tone/NAC	TX Freq	TX Tone/NAC	Mode (A, D, or M)	Remarks
	1	TACTICAL	TAC 1	DIV A & S	168.0500	123.0	168.0500	123.0	A	
	2	TACTICAL	TAC 2	DIV D	168.2000	123.0	168.2000	123.0	A	
	3	TACTICAL	TAC 3	DIV Z	168.6000	123.0	168.6000	123.0	A	
	4	TACTICAL	TAC 4	DIV H / CONT	166.7250	123.0	166.7250	123.0	A	
	5	TACTICAL	TAC 5	ROADS	166.7750	123.0	166.7750	123.0	A	
	6	TACTICAL	TAC 6	BOAT	168.2500	123.0	168.2500	123.0	A	
	7	TACTICAL	A/G PRI	ALL DIVS	169.1500	000.0	169.1500	000.0	A	
	8	AIR TO GROUND	A/G SEC	ALL DIVS	168.4000	000.0	168.4000	000.0	A	
	9	AIR TO GROUND	A/G 3	ALL DIVS	166.6125	000.0	166.6125	000.0	A	
	10	COMMAND	CMD 10	ALL	170.0125	123.0	165.2500	123.0	A	SLIDE RIDGE
	11	COMMAND	CMD 11	ALL	170.4125	123.0	165.9625	123.0	A	FOX PEAK
	12	COMMAND	CMD 12	ALL	170.6875	123.0	166.575	123.0	A	GOAT MOUNTAIN
	13	LOCAL RPTR	GOAT	ALL	172.3500	146.2	165.0125	118.8	A	GOAT MOUNTAIN
	14	LOCAL RPTR	MCLUR	ALL	172.3500	146.2	165.0125	103.5	A	McCLURE MTN
	15	AIR TO GROUND	VMED 29	ALL DIVS	155.3475	156.7	155.3475	156.7	A	AIR EMS COORDINATION
	16	AIR TO GROUND	AIRGUARD	ALL DIVS	168.6250	000.0	168.6250	110.9	A	EMERGENCY AIRCRAFT CONTACT
5. Special Instructions: 24 hour staffing: PIONEER COMMUNICATIONS PHONE NUMBER: (208) 891-7948 / CURRENT CLONE "IV"										
6. Prepared By COML				Name: SETH BAUMGARTEN						
				Signature: <i>Seth Baumgarten</i>						
ICS 205				Date/Time: 6/28/24 1600						
				IAP Page						

SAFETY MESSAGE

Pioneer Fire

June 29, 2024

Shift: Day

Safety Quote

"A ship is always safe at shore, but that is not what it's built for."

~ Albert Einstein ~

Lest We forget:

"...while the ideal level of risk may be zero, a hazard-free work environment is not a reasonable or achievable goal in fire operations." Red Book, Chapter 7, Pg. 1

In 1929 two firefighters were killed fighting the Camas Creek wildfire. They were found 2 miles from where last seen alive, 2 weeks after going missing. They were found between Squaw Creek and McFarland Creek. This is the area just northeast of our DP 76 and H 45 near the hiking trail in that area.

"Two firefighters were entrapped and died on the Camas Creek Fire, Chelan National Forest (now the Okanogan-Wenatchee NF), Washington. Days before the fatal entrapment, Douglas Ingram (Pacific Northwest Regional Range Manager) had led his fire crew into a clearing to let the fire blow over them as they lay prone. "Ingram whittled and told stories while the fire raged on all sides of their little clearing and finally passed over, leaving the men unharmed." On August 13, Ingram and young local firefighter Ernani St. Luise of the Chelan National Forest became entrapped together between McFarland and Squaw Creek, two miles from where they were last seen. Their bodies were discovered about two weeks later where they had been entrapped."

Lessons Learned Center

Some say that you die twice in this world, once when the spark of life leaves your body and a second time when someone says your name out loud for the last time.

Douglas Palmer Ernani Saint Luise Lest We Forget

"The primary means by which we prevent accidents in wildland fire operations is through aggressive risk management..... Through organized, comprehensive, and systematic risk management, we will determine the acceptable level of risk that allows us to provide for safety yet still achieve fire operations objectives." Red Book, Chapter 7, Pg. 1

Go make it a safe shift

Safety Officers: Matt Broyles, Eric Brown



Human Resource Message Pioneer Fire

Hydration
June 29, 2024

Dehydration is the result of the body trying to regulate its temperature naturally through sweating. Maintaining body fluids is essential for sweating. You must hydrate before, during, and after your shift.

Studies conducted on wildland firefighters indicate that during fire suppression activities firefighters need to drink a minimum of one quart of fluid each hour of work.

Before work, you should take extra fluids to prepare for the heat. Drink one or two cups of water, juice, or a sports drink before work.

While working, drink at least one quart of fluid per hour. Drink as much as you can during the lunch break. Water is your greatest need during work in the heat.

Thirst always underestimates fluid needs, so you should drink more than you think you need.

You can assess your hydration by observing the volume, color, and concentration of your urine. Low volumes of dark, concentrated urine or painful urination indicate a serious need for rehydration. Other signs of dehydration include a rapid heart rate, weakness, excessive fatigue, and dizziness.

Rapid loss of several pounds of body weight is a certain sign of dehydration. Rehydrate before returning to work; working in a dehydrated state can lead to serious consequences, including heat stroke, muscle breakdown, and kidney failure.

What are you doing right now to ensure that you are hydrated?

Margaret Dietrich, Human Resource Specialist

FINANCE MESSAGE

Finance Email: 2024.pioneer.finance@firenet.gov

Finance Phone: 484-501-1835

This incident requires electronic documentation. Please email your time to the address above. Scanned PDF's please, no .JPG's. Feel free to call finance for help if needed. Scanners are also available at ICP.

Required Documents

Overhead, Agency Crews & Cooperators	Contract Resources
Finance docs needed: Resource Order, Manifest, Cooperative Agreement, Casual Hire Form w/ECI# (as applicable)	Finance docs needed: Resource Order, Manifest, Full Contract/Agreement, Certifications (<i>if required</i>) Pre-Inspection
Daily: CTRs, Shift Tickets CTR's should be named as: CTR_RO#_YYMMDD-DD (Ex: CTR_O235_240605-07) Electronic CTR available! Use QR code on front cover	Daily: CTRs, Shift Tickets, receipts (claims, etc.) NOTE: Document travel times and odometer readings Shift Tickets should be named as: ST_RO#_YYMMDD-DD (Ex: ST_E5_240623-27) Electronic shift ticket available! Use QR code on front cover
Demob: Signed OF-288; Signed OF-286	Demob: Contractor Evaluations, Shift Tickets, receipt(s) for Addition/Deductions, Post-Inspection, Signed OF-286
<p>"H-Pay"- Entitlement to Hazardous Pay Differential (5 CFR 550.904) – Hazard pay MUST be supported by a justification. If justification is not provided, you chance losing your entitlement.</p>	<p>Please call finance regarding issues with your time: No one on List today, any questions for Finance, please email us. Tomorrow we will have a phone number for Team 7 Finance Thank You.</p>

Incident Name: **Pioneer**

Incident Number: **WA-SES-000173**

Financial codes:

WA DNR – 221-LDW

DOI – RZ79

USDA – PNRZ79 (1522)

Please make sure you check in using QR code on the front of the IAP and then email your time daily.

THANK YOU!!

Resource Advice

Lead READ: Brigitte Ranne 509-663-6118, brigitte.ranne@usda.gov
REAF: Hector Rodriguez 509-393-5379, Hector.Rodriguez3@usda.gov
REAF: Eireann Pederson 360-854-8197, eireann.pederson@usda.gov
REAF: Carrissa Camenson 360-899-7147, carissa.camenson@usda.gov



Resource Guidelines

MIST for Spike Camp and Lucerne Forward Operating Base Management

- Employ minimum impact suppression tactics (MIST) where feasible, especially in remote or sensitive areas.
- If spike camps are necessary, use existing, or previously impacted campsites where available. If existing campsites are not available; use your local resource advisor to help identify the most resilient sites in rocky or sandy soils. Avoid camping in wet meadows, along streams, or on lake shores.
- Store food properly so that it is not accessible to wildlife. Consider hanging food in trees at least 15 feet off the ground and 5 feet from the trunk of the tree, or store food in sealable containers. Store food away from the campsite (300 feet is ideal) to reduce the risk of human and bear (and rodent!) conflicts.
- Do not let garbage and food scraps accumulate in camp. All garbage and food scraps need to be removed from the camp ASAP and before leaving the site.
- Minimize disturbance to land in preparing bedding and campfire sites. Do not clear vegetation, trench, or excavate a flat spot to create bedding sites.
- Do not use nails in trees. Don't construct camp furniture.
- If a campfire is built for warmth in the evening, build either a pit or mound fire. Use dead and down firewood. Use small diameter wood that burns down more cleanly. Don't burn plastics or aluminum - pack it out with the rest of the camp garbage.
- In small spike camp situations (not Lucerne), individuals should use the "cat-hole" method of disposing of human waste. Toilet seats should be located a minimum of 200 feet from water sources. Holes should be dug 6-8 inches deep.
- In large or long term spike the camps use helicopters, boats, or pack stock to deliver portable backcountry latrines and remove human waste if necessary. If the camp does not have adequate pack, boat, or air support for human waste management, establish community latrines well away from water sources and common areas. Use human waste bags, if necessary

Dipping and Drafting

- No cross-dipping between water bodies. All buckets or snorkels should be cleaned, inspected, and dried in the sun if they must be used between lakes. Dipping in small lakes must be pre-approved by the READ or AA.
- When drafting, use already disturbed areas for stream access (road crossings, dispersed campsites) to reduce the need for riparian vegetation clearing.
- Use screens (3/32" inch) for all pumping operations.
- Use containment pads and basins under pumps and fuel cans. Ensure a spill kit is present with every operating pump.

Invasive Species

- The fire is burning within an infestation of common crupina, a WA State Class A Noxious weed. Prevent spread of crupina off site – plan to wash hose and other equipment. Request fire fighters brush boots before boarding boat or before entering National Park Service Land.
- Inspect slings and remove all plant/soil material prior to use.
- Ensure all camps, staging areas, helispots and cargo areas are free of invasive plants to prevent spread to un-infested areas.
- Weed wash all vehicles, including boats, when they arrive to the incident and when demobed.

Fisheries /Aquatic Recommendations

- If trees must be felled in riparian areas for suppression or safety reasons, fell them toward streams where possible and minimize bucking where possible.
- Non-mechanized suppression activities are recommended within Riparian Reserves (150-300 ft from stream channel). For example, consider hand lines instead of dozer lines when feasible.

Retardant Use

- Retardant avoidance areas are present in the fire suppression area for both aquatic and terrestrial species.
- Track all retardant drops – locations and amounts.
- Report all mis-applications ASAP to READ. Monitoring and reporting of misapplications is required.

Wet Meadows

- No line or other disturbance in wet meadows in the Summer Blossom area (east of South Navarre campground above and below the 8200 road) and at Coyote and Poison Springs at the headwaters of their respective creeks.

Dry Meadows

- Minimize disturbance from staging and parking areas in dry meadows. These areas recovery slowly and are vulnerable to invasive plant infestation.

White Bark Pine

- Avoid cutting white bark pine whenever possible. Needles of 5 keep it alive! Ask READ for help with ID.

Burnout operations

- Plan to protect whitebark pine of all ages and mature cold and moist forest during burnouts. READ consultation and line officer approval is required for burn plans that include these forest types.
- During burnouts modify firing to retain large trees, large snags and large down wood in forests whenever possible.
- Minimize total acres burned in burnouts.
- Incorporate typical resource protection measures used in RX burning whenever it is safe and practical to do so (such as retention of green islands in moist areas).
- Provide a map of areas that were burned as part of the burnout operation (for use in emergency consultation).
- If cultural resources are discovered during suppression activities, leave on site and notify READ.

LOGISTICS NOTES

Pioneer Fire ICP

Breakfast 0530 – 0900
Lunch @ Refer Trailer – 0500 - 2100
Dinner 1800 -2100
Shower 0500 – 1200 & 1400 – 2200
Supply 0600 – 2200
Ground Support 0700 – 2100
Fuel Tender 0700 – 2100
Weed Wash 0700 – 1400 & 1600 – 2000

FOB Lucerne

Breakfast 0600 - 0900
Lunch – Pickup with Breakfast
Dinner 2030 – 2130
Shower 0500 – 1200 & 1400 – 2200
Supply 0600 – 2200

Ground Support Contact Numbers:

Casey Glade 435-704-4702, Joe Keady 541-733-6701

Ordering Information

Submit all orders on General Message Form 213 to the following email address;

2024.pioneer.ordering@firenet.gov

Ordering Manager Noe Reyes 208-416-3715

ICP Camping & Parking Under Maple Trees

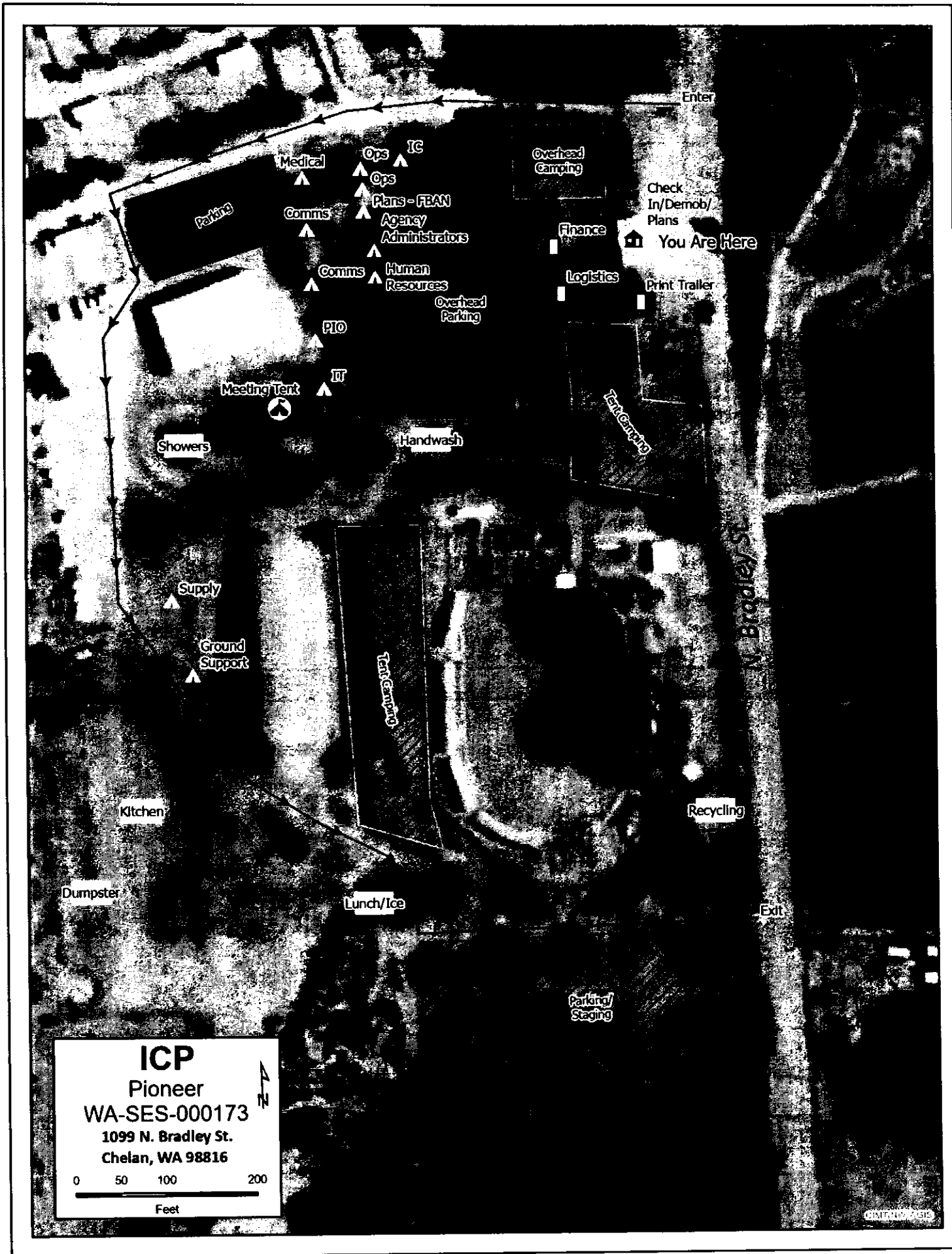
After assistance from Plans, READS and google, the sticky oily substance dripping from the maple trees next to Main Street was determined to be insect residue, sometimes called "Honeydew". This substance is nontoxic and doesn't damage cars if removed quickly. However, honeydew can damage car paint and reduce visibility if left on for too long. Water and a paper towel can remove it from a tent fly, so if your tent is affected wiping it off may remove the honeydew. Facilities staff took an affected vehicle to the weed wash. The windshield washer and wipers cleared the windshield easily. The weed wash successfully removed all the honeydew on other parts of the vehicle. Avoid parking or camping under the maple trees.

Recycling Scorecard on Incident

Plastic Bottles	641-lbs	Aluminum Cans	181– lbs
Cardboard	7,862-lbs	Office Paper	571-lbs
Plastics 1 & 2	105-lbs	Glass	9-lbs
Batteries	112-lbs	Food Composting	6,460-lbs
Cooking Oil	176-gal	Food Donations	89-lbs
Trash	16,140-lbs	Recycling	17,438-lbs

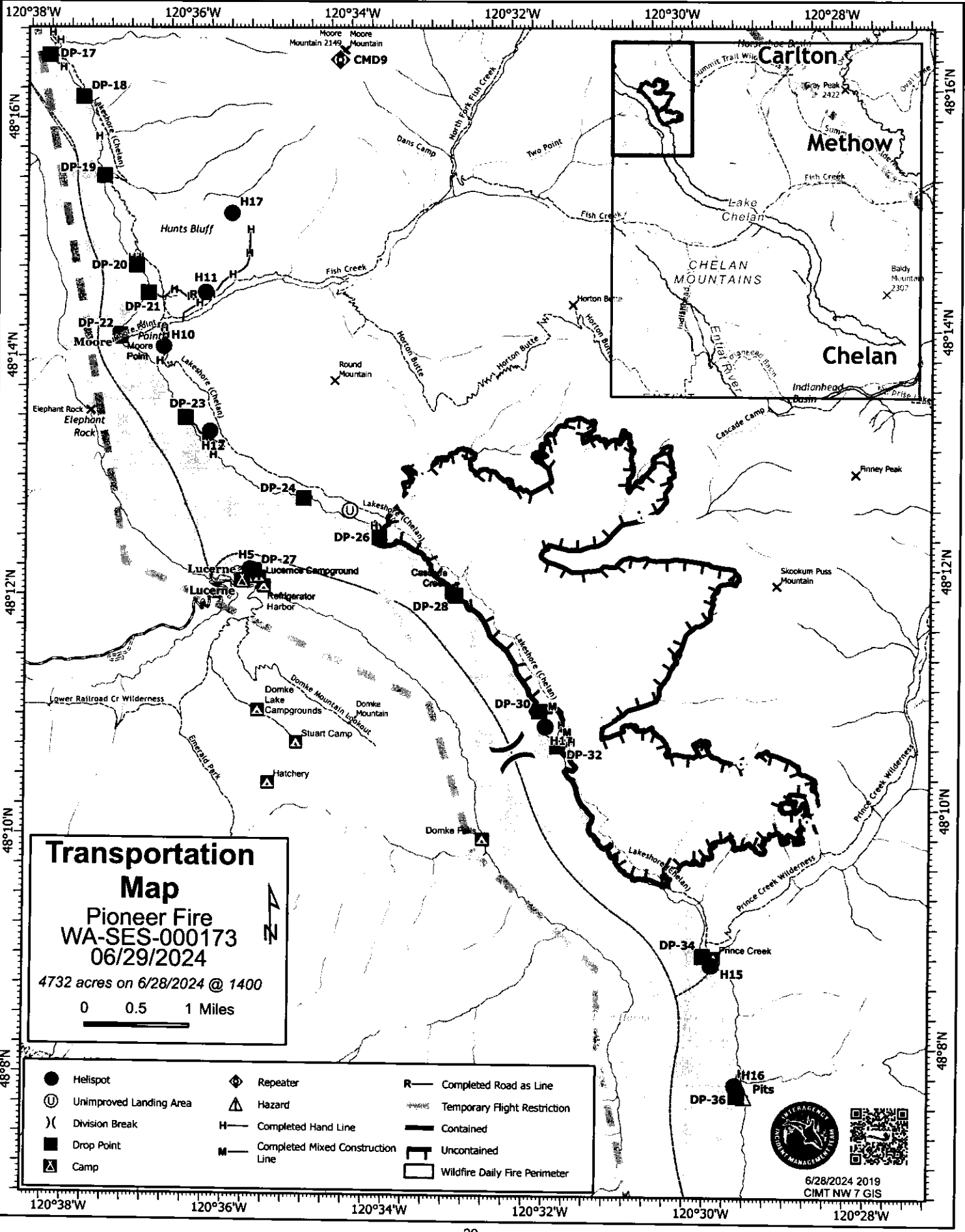
GENERAL MESSAGE (ICS 213)

1. Incident Name and Number: PIONEER		
2. To (Name and Position): ORDERING		
3. From (Name, Position and Phone): SMOKEY BEAR, PIO 555-123-1234		
4. Subject: REQUEST	5. Date: 06/29/24	6. Time: 1300
7. Message: WOULD LIKE TO ORDER 1 EA SHOVEL 1 PK GENERAL MESSAGES 1 BX PAPER TOWELS 2 ROLLS STRUCTURE WRAP TAPE (This is where you need to be specific. Research the item you want and recommend possible vendors, item number, especially if this is a unique item) NEED BY JULY 2, 2024 @ 1400. (You need to be realistic here. Plan on about 2-3) PLEASE DELIVER TO BLACK MOUNTAIN LOOKOUT **Make sure your contact info is somewhere on this form. Name, phone, or email.. ***For cache items you can expect delivery to the ICP Supply in 24 hours, or 48 if we're delivering. ****For local purchase items we need 48-72 hours		
8. Approved by: Name: _____ Signature: _____ Position/Title: _____		
9. Reply:		
10. Replied by: Name: _____ Position/Title: _____ Signature: _____		
ICS 213	Date/Time: _____	



ICP
 Pioneer
 WA-SES-000173
 1099 N. Bradley St.
 Chelan, WA 98816

0 50 100 200
 Feet



Transportation Map
Pioneer Fire
WA-SES-000173
06/29/2024
 4732 acres on 6/28/2024 @ 1400

0 0.5 1 Miles

- | | | |
|---------------------------|---------------------------------------|----------------------------------|
| ● Helispot | ◆ Repeater | R — Completed Road as Line |
| ⊕ Unimproved Landing Area | ⚠ Hazard | --- Temporary Flight Restriction |
|) Division Break | H — Completed Hand Line | ▬ Contained |
| ■ Drop Point | M — Completed Mixed Construction Line | ▬ Uncontained |
| ⚡ Camp | | ▭ Wildfire Daily Fire Perimeter |



6/28/2024 2019
 CIMT NW 7 GIS



Team 7 Line Supply Order		Order #			
Date & Time	Deliver To Location/Time	Delivery Method			
Order Placed	(Division, Drop Point, Heli Spot, Lat/Long)	(Driver, Heli, DIVS to P/U)			
Order received in Communications (name & time)		Ordered by (name and Position)			
Order received in Supply by (name & time)		Ground Contact			
Order received in Transportation by (name & time)		Contact Freq.			
Order received in Helibase by (name & time)		Special Instructions/line length/ elevation			
Order shipped to line by (name & time)					
#	Item	Amount	#	Item	Amount
1	Meals #1842	MRE 12/Cs	33	Bath in a Bag, Large #0712	
2	Water #0048	5 gal cubies	34	Bath in a Bag, Small #0206	
3	Gatorade	24/Cs	35	Coffee Kit #0480	
4	Batteries, AA #0030	24/pg	36	Coffee 3lb Can	
5	Batteries, AAA #7471	24/pg	37	Folda-Tank 1500 gal #0664	
6	Gas Unleaded	5 gal	38	Pumpkin 3000 gal. #0568	
7	2 Cycle Oil #7724	5 gal mix	39	Backpack Pump #0909	
8	2 cycle Oil #3444	1 Gal mix	40	Mark III pump + Kit #0148	
9	Diesel	5 gal	41	Lightweight Pump + Kit #8606	
10	Bar Oil #1880	1 Gal	42	Volume Pump #1222	
11	Bar Oil #1869	1 Qt	43	Hose 1 1/2" #1239 100' lg	
12	Shovel #0171		44	Hose 1" #1238 100' lg	
13	Pulaski #0146		45	Hose 3/4" #1016 50' lg	
14	Mcleod #0296		46	Reducer 1 1/2" to 1" #0010	
15	Combi #1180		47	Reducer 1" to 3/4" #0733	
16	Chainsaw Kit #0340		48	Gated "Y" 1 1/2" #0231	
17	Drip Torch Empty #0241		49	Gated "Y" 1" #0259	
18	Fussee #0105		50	Gated "Y" 3/4" #0904	
19	Sleeping Pad #1566		51	In-line Tee 1 1/2" to 1" #0230	
20	Sleeping Bag #0022		52	Nozzle KK 1 1/2" #1082	
21	Fly Tent #0070		53	Nozzle KK 1" #1081	
22	Plastic Sheeting #0143		54	Nozzle 3/4" #0136	
23	Parachute Cord #0533		55	Nozzle, Forester 1" #0024	
24	Fiber Tape #0222		56	Sprinkler kit #1048	
25	Garbage Bags #0021		57		
26	Leadline 3000 lbs #0528		58		
27	Cargo Net 3000lb #0531		59	Team 7 Hose Lay Kit	
28	Swivel 3000lb #0526		60		
29	Slingable Bg 72 Gal Blivet #0426		61		
30	Foam 5 gal. #1145		62		
31	Toilet Paper #0142		63		
32			64		

Team 7 Hose Lay Kit		
Item	Amount	Amount
1 1/2 in. synthetic hose	1000 ft.	
1 in. synthetic hose	500 ft.	
3/4 in. garden hose	500 ft.	
1 1/2 in. gated wye	5 ea.	
1 1/2 in. - 1 in. reducer	5 ea.	
1 in. combination nozzle	5 ea.	
1 in. - 3/4 in. reducer	5 ea.	
3/4 in. valve, shutoff, ball	5 ea.	
3/4 in. nozzle	5 ea.	
3/4 in. gated wye	5 ea.	

SPRINKLER KIT NFES # 1048		
Item	Amount	Amount
Sprinkler head w/ couplings	4 ea.	
3/4 in. garden hose	250 ft.	
1 1/2 x 1 1/2 x 1 tee	4 ea.	
1 x 3/4 reducer	4 ea.	
1 1/2 in. - 1 in. reducer	1 ea.	
3/4 in. gated wye	2 ea.	
3/4 in. valve, shutoff, ball	4 ea.	
3/4 in. nozzle	1 ea.	
3/4 in. pressure regulator	4 ea.	
3/4 in. nozzle, plastic 60 GPM	1 ea.	
10 in. adjustable wrench	1 ea.	

LINE ORDER PROCESS

Line orders from the field should go through the Communication Unit via radio (primary) or 24-hour phone number shown on the cover of the IAP. All other supply requests should be submitted in person to the Supply Unit.

Check In Message

- Please complete the virtual check-in process via the QR code on the front cover.
- You are not checked in until you provide the following:
 - 1) Red Cards
 - 2) Roster/Manifest
- Please email documents to: 2024.pioneer.checkin@firenet.gov

Any Questions:

Phone: 509-661-5372

Email: 2024.pioneer.checkin@firenet.gov

Demob Message

- Fliers complete the "Air Travel Request" via the QR code on the front cover 72 hours prior to flight date.
- Return supplies to the Cache.
- Return radios, antennas, etc., to Communications.
- Contact Finance about closing out your paperwork.
- Once the above items have been completed, SCAN the QR code on the front cover and complete the demob questions.

Any Questions:

Phone: 509-662-5376

Email: 2024.pioneer.demob@firenet.gov



Last Work Day / Demob Report

Incident: PIONEER US-WA-SES-000173

Questions ?? - Jay at (509) 661-5376

Demob 06/29

CREWS

CRW1	C-9	CRW1 - ZIGZAG IHC
CRW1	C-11	CRW1 - REDMOND IHC

OVERHEAD

HECM	O-119	HASTINGS, ANDREW B
HECM	O-120	MASON, CORY WILLIAM
PIOC	O-56	BOGARDUS, LARISA ANN
PIOC	O-174.89	STECKER, LIVIA AUDREY

LWD: 06/29 / Demob 06/30

CREWS

CR2I	C-10	CR2I - OWF METHOW
------	------	-------------------

OVERHEAD

DIVS	O-103	LIPPERT, BENJAMIN J
DIVS	O-106	HALL, ANDREW J
HLCO	O-88	BERGREN, KENNETH C
HMGB	O-101	THAYER, BENJAMIN
PIO3	O-81	SILVIS, CARISSA
SOPL	O-74	JOHNSON, MARK E
TFLD	O-83	LEWIS, MARK R

LWD: 06/30 / Demob 07/01

EQUIPMENT

WTS2	E-75	WTS2 - DAVID RAINS - 391135
WTS3	E-99	WTS3 - NW DIESEL DUDES LLC - A44464

OVERHEAD

DIVS	O-107	BAFFA, SILAS TAYT
HECM	O-124	BIVENS, BRANDI C
HEQB	O-115	HANSON, GARRETT GERALD
HEQB	O-116	MEYER, TYLER TODD
HEQB	O-117	FOX, IAN MASON
HRSP	O-109	DIETRICH, MARGARET VIRGINIA
SEC1	O-80	HUNT, ROBERT DALE
SEC2	O-82	KRUSE, LISA JO
SEC2	O-95	SLATINSKI, JOHN DONALD
SEC2	O-98	WIEBUSCH, COREY P
TFLD	O-50	OLSON, TODD OWEN
TFLD	O-110	CLIFTON, SHANE D
TFLD	O-111	OLSON, LARS M
THSP	O-108	MORPHIS, SETH BRYANT



Pioneer Fire WA-SES-000173

C&G Contact List

Incident Commander	LeFevre	Nathan	nlefevre@blm.gov	(541) 255-6595
Deputy Incident Commander	Orr	Christopher	christopher_orr@nps.gov	(530) 640-1464
Incident Commander (T)	North	Steve	snorth@mcianefire.org	(360) 239-2069
Safety Officer	Brown	Eric	ericbrown0523@gmail.com	(928) 699-3477
Safety Officer	Broyles	Matt	admbroyles@gmail.com	(541) 591-6151
Liaison Officer	Christianson	Shawn	shawn.christianson.adm@colvilletribes.com	(509) 429-3348
Liaison Officer	Suba	Mark	marksuba12@gmail.com	(541) 219-9048
Liaison Officer	Brody	Greg	lmtgregbrody@gmail.com	(503) 482-8071
Liaison Officer (T)	Marchand	Rhonda	rmarchand76@yahoo.com	(509) 634-1166
Public Information Officer	Rossbach	Cheyne	crossbac@blm.gov	(541) 579-0648
Finance Section Chief	Westgate	Patty	pattwestgate@gmail.com	(541) 892-8432
Finance Section Chief (T)	Bailey	Lori	lori.bailey@usda.gov	(541) 589-0806
Operations Section Chief	Larson	Jon	jon_larson@fws.gov	(208) 631-6488
Operations Section Chief	Merritt	Seth	smerritt@esf-l.org	(425) 501-7384
Operations Section Chief (T)	Poyner	Rob	robert.poyner@usda.gov	(425) 512-2621
Operations Section Chief	Bortner	Jefferson	jeff_bortner@nps.gov	(360) 784-2126
Logistics Section Chief	Yager	Max	orcamax2015@gmail.com	(541) 690-6627
Logistics Section Chief	Vaughan	Franklin	franklin.vaughan@usda.gov	(859) 619-7244
Logistics Section Chief	Wedekind	Cindy	cwedekind59@gmail.com	(541) 450-1136
Planning Section Chief	Crawford	Michael	mcrawfor@blm.gov	(458) 212-0501
Planning Section Chief (T)	Plummer	Debbie	dplummer@blm.gov	(509) 991-0334

MEDICAL PLAN (206 WF)

1. Incident/Project Name		2. Operational Period				
Pioneer Fire		Date/Time: 06/29/24 0600-2200				
3. Ambulance Services						
Name	Complete Address	Phone	Advanced Life Support (ALS)			
			Yes	No		
Lake Chelan EMS	Chelan, WA	911	X			
Douglas/Okanagan County Fire	Brewster, WA	911		X		
Aeromethow EMS	Twisp, WA	911	X			
4. Air Ambulance Services						
Name	Phone/Channel	Frequency, Type of Aircraft & Capability				
Life Flight - Brewster	1-800-232-0911 911	VMED 29, Rotor, ALS, 24 hr				
Airlift NW - Wenatchee	1-800-426-2430 911	VMED 29, Rotor, ALS, 24 hr				
Medivac Ship	Command 7,8,9,10,11 (Linked)	VMED 29, Rotor, BLS, Daytime				
Mount Rainer Ship	CWICC 1-509-884-3473 x 2	VMED 29, Rotor, BLS, Daytime, Short Haul				
Snohawk 10 - Snohomish	1-800-258-5990 911	VMED 29, Rotor, ALS, Daytime, Hoist				
Spokane County Hoist - Spokane	1-509-532-8930 911	VMED 29, Rotor, ALS, 24 hr, Hoist Daytime Only				
5. Hospitals						
Name	Degrees Decimal Minutes	Travel Time From Fire		Phone	Helipad	Level of Care
		Air	Boat		Yes No	
Lake Chelan Health 110 S. Apple Blossom Drive Chelan WA	Lat: 47° 50' 20 N Long: 119° 59' 20 W	30 Min	3 Hr	509-683-2474	X	Level IV Trauma
Central Washington Hospital 1201 S. Miller Wenatchee WA	Lat: 47° 24. 43 N Long: 120° 19. 28 W	1 Hr	4 Hr	509-433-3115	X	Level III Trauma
Harborview Medical Center 325 9th Ave Seattle WA	Lat: 47° 36. 24 N Long: 122° 19. 45 W	1.5 Hr	6 Hr	206-744-4025	X	Level I Trauma Burn Center
ICP	EMS Responders & Capability:		James Brown MEDL/Paramedic Mariann Turley MEDL/AEMT EMT 4 Justin Dominguez		360-775-5413 509-496-9370 509-741-0611	
	Equipment Available on Scene:		ALS Kit, AED, O2, OTC meds			
	Medical Emergency Channel:		Command 7, 8, 9, 10, 11 (Linked)			
	ETA for Ambulance to Scene:					
	Air:		NA			
	Ground:		15 Min			
	Approved Heli-Spot:		NA			
	Lat:		NA			
LUCERNE FOB	EMS Responders & Capability:		Ben Meacham MEDL/EMTF (Lucerne FOB) Londa Van Kirk MEDL/EMTF (Lucerne FOB) MEDIC 6 Steve Medina (Boat Medical) EMT 1 Ivan Huld (Boat Medical)		360-921-3817 360-815-7645 360-556-9568 360-888-9880	
	Equipment Available on Scene:		ALS Kit, AED, O2, OTC meds			
	Medical Emergency Channel:		Command 7, 8, 9, 10, 11 (Linked)			
	ETA for Ambulance to Scene:					
	Air:		2 hr			
	Water/Ground:		3 hr			
	Approved Heli-Spot:					
	Lat:		H5 48° 12.1624' N			
Long:		120° 35.4476' W				
BRANCH I	EMS Responders & Capability:		MEDIC 1 Remington Becker (DIV Z) MEDIC 8 Rick Kelly (DIV Z) MEDIC 3 Adam Lathrop (DIV A) EMT 2 Aidan Noel (DIV A) EMT 3 James Franklin (DIV A)		360-903-8612 509-290-3922 425-531-0469 206-458-0103 253-312-1374	
	Equipment Available on Scene:		ALS Kit, Monitor/Defib, O2			
	Medical Emergency Channel:		Command 7, 8, 9, 10, 11 (Linked)			
	ETA for Ambulance to Scene:					
	Air:		2 hr			
	Water/Ground:		3 hr			
	Approved Heli-Spots:					
	H1 48° 10.813' N 120° 31.925' W		H11 48° 14.492' N 120° 35.922' W		H15 48° 08.754' N 120° 29.813' W	
	H10 48° 14.099' N 120° 36.782' W		H12 48° 13.381' N 120° 35.919' W		H16 48° 07.744' N 120° 29.541' W	
	Lat:		NA			
	Long:		NA			

MEDICAL PLAN (206 WF)

BRANCH II	EMS Responders & Capability:	REMS 2 Brayden Kirk + 3 (DIV D) 509-264-8203 Kevin Smith MEDLT/EMPF (Stehekin FOB) 509-710-0239
	Equipment Available on Scene:	
	Medical Emergency Channel:	Command 7, 8, 9, 10, 11 (Linked)
	ETA for Ambulance to Scene:	
	Air:	2 hr
	Ground:	3 hr
	Approved Heli-Spot:	NA
	Lat:	NA
Long:	NA	
BRANCH IV	EMS Responders & Capability:	Unstaffed with medical Contingency medical resources can assist
	Equipment Available on Scene:	
	Medical Emergency Channel:	Command 7, 8, 9, 10, 11, 12 (Linked)
	ETA for Ambulance to Scene:	
	Air:	2 hr
	Ground:	3 hr
	Approved Heli-Spot:	NA
	Lat:	NA
Long:	NA	
BRANCH V	EMS Responders & Capability:	MEDIC 2 Joel Bower (CONTINGENCY) 360-461-7390 MEDIC 5 Brian Linacre (CONTINGENCY) 301-781-7990 MEDIC 7 Steve Drab (CONTINGENCY) 406-600-2059 REMS 1 Ray Storm + 4 (DIV S) 415 637-0491
	Equipment Available on Scene:	ALS Kit, Monitor/Defib, O2, Rescue Gear
	Medical Emergency Channel:	Command 7, 8, 9, 10, 11, 12 (Linked)
	ETA for Ambulance to Scene:	
	Air:	2 hr
	Ground:	3 hr
	Approved Heli-Spot:	
	Lat:	H25 47° 59.200' N
Long:	120° 16. 521' W	
TBD	EMS Responders & Capability:	TBD
	Equipment Available on Scene:	
	Medical Emergency Channel:	Command 7,8,9,10,11 (Linked)
	ETA for Ambulance to Scene:	
	Air:	
	Ground:	
	Approved Heli-Spot:	NA
	Lat:	NA
Long:	NA	
TBD	EMS Responders & Capability:	TBD
	Equipment Available on Scene:	
	Medical Emergency Channel:	Command 7,8,9,10,11 (Linked)
	ETA for Ambulance to Scene:	
	Air:	
	Ground:	
	Approved Heli-Spot:	NA
	Lat:	NA
Long:	NA	

Prepared By (Medical Unit Leader)	Date	Reviewed By (Safety Officer)	Date
Mariann Turley MEDL	06/28/24	Matt Broyles SOFC	06/28/24
Signature: <i>Mariann Turley</i>		Signature: <i>Matt Broyles</i>	

Medical Incident Report

FOR A NON-EMERGENCY INCIDENT, WORK THROUGH CHAIN OF COMMAND TO REPORT AND TRANSPORT INJURED PERSONNEL AS NECESSARY.

FOR A MEDICAL EMERGENCY: IDENTIFY ON SCENE INCIDENT COMMANDER BY NAME AND POSITION AND ANNOUNCE "MEDICAL EMERGENCY" TO INITIATE RESPONSE FROM IMT COMMUNICATIONS/DISPATCH.

Use the following items to communicate situation to communications/dispatch.

1. CONTACT COMMUNICATIONS / DISPATCH (Verify correct frequency prior to starting report)

Ex: "Communications, Div. Alpha. Stand-by for Emergency Traffic."

2. INCIDENT STATUS: Provide incident summary (including number of patients) and command structure.

Ex: "Communications, I have a Red priority patient, unconscious, struck by a falling tree. Requesting air ambulance to Forest Road 1 at (Lat./Long.) This will be the Trout Meadow Medical, IC is TFLD Jones. EMT Smith is providing medical care."

Severity of Emergency / Transport Priority	<input type="checkbox"/> RED / PRIORITY 1 Life or limb threatening injury or illness. Evacuation need is IMMEDIATE <i>Ex: Unconscious, difficulty breathing, bleeding severely, 2° - 3° burns more than 4 palm sizes, heat stroke, disoriented.</i> <input type="checkbox"/> YELLOW / PRIORITY 2 Serious Injury or illness. Evacuation may be DELAYED if necessary. <i>Ex: Significant trauma, unable to walk, 2° - 3° burns not more than 1-3 palm sizes.</i> <input type="checkbox"/> GREEN / PRIORITY 3 Minor Injury or illness. Non-Emergency transport <i>Ex: Sprains, strains, minor heat-related illness.</i>	
Nature of Injury or Illness & Mechanism of Injury		Brief Summary of Injury or Illness <i>(Ex: Unconscious, Struck by Falling Tree)</i>
Transport Request		Air Ambulance / Short Haul/Hoist Ground Ambulance / Other
Patient Location		Descriptive Location & Lat. / Long. (WGS84)
Incident Name		Geographic Name + "Medical" <i>(Ex: Trout Meadow Medical)</i>
On-Scene Incident Commander		Name of on-scene IC of Incident within an Incident <i>(Ex: TFLD Jones)</i>
Patient Care		Name of Care Provider <i>(Ex: EMT Smith)</i>

3. INITIAL PATIENT ASSESSMENT: Complete this section for each patient as applicable (start with the most severe patient)

Patient Assessment: See IRPG page 106

Treatment:

4. TRANSPORT PLAN:

Evacuation Location (if different): *(Descriptive Location (drop point, intersection, etc.) or Lat. / Long.)* Patient's ETA to Evacuation Location:

Helispot / Extraction Site Size and Hazards:

5. ADDITIONAL RESOURCES / EQUIPMENT NEEDS:

Example: Paramedic/EMT, Crews, Immobilization Devices, AED, Oxygen, Trauma Bag, IV/Fluid(s), Splints, Rope rescue, Wheeled litter, HAZMAT, Extrication

6. COMMUNICATIONS: Identify State Air/Ground EMS Frequencies and Hospital Contacts as applicable

Function	Channel Name/Number	Receive (RX)	Tone/NAC *	Transmit (TX)	Tone/NAC *
COMMAND					
AIR-TO-GRND					
TACTICAL					

7. CONTINGENCY: Considerations: If primary options fail, what actions can be implemented in conjunction with primary evacuation method? Be thinking ahead.

8. ADDITIONAL INFORMATION: Updates/Changes, etc.

REMEMBER: Confirm ETA's of resources ordered. Act according to your level of training. Be Alert. Keep Calm. Think Clearly. Act Decisively.