





INCIDENT OBJECTIVES	1. Incident Name	2. Date Prepared	3. Time
	PIONEER	06/29/2024	1900

4. Operational Period

**Day Operations: 0700-2100**

**Strategic Framework:**

The Pioneer Fire is a full suppression fire utilizing strategies and tactics that provide the highest likelihood of success while mitigating risks to the responders and public. Extreme terrain prevents direct attack. Indirect lines are being identified and established that reduces risk to responders while protecting identified values including private and federal infrastructure and recreational values.

**Management Objectives:**

- Ensure the safety and well-being of responders and the public by making timely risk-informed decisions that align with values at risk.
- Protect private and federal infrastructure and recreational values.
- Foster relationships with local cooperators and the public by providing coordinated, accurate, and timely information.
- Coordinate suppression activities with READ's to identify and mitigate current and future impacts to the landscape and resources.
- Treat each other with dignity and respect and act in a professional manner on the fire and in the communities.
- Manage cost commensurate with values at risk by coordinating with the Agency Administrators and Incident Business Advisors.

**Operational Objectives:**

- Implement an effective suppression strategy utilizing direct attack where and when appropriate to protect values at risk. When fire behavior, terrain, or safety concerns prohibit direct attack, utilize other suppression tactics such as indirect and point protection as appropriate to reduce risk to responders. Take advantage of natural features such as breaks in fuels, topographic features, or changes in weather.
- Establish indirect control lines with the highest probability of success which prevent fire spread into populated areas.
- Communicate with local law enforcement officials to ensure current and potential evacuations are coordinated.

6. Weather Forecast for Period

7. General Safety Message

8. Attachments (mark if attached)

X	Organization List - ICS 203	X	Medical 206WF - 8 Line	X	Finance Message
X	Div. Assignment Lists - ICS 204	X	Safety Message	X	Dutch Creek Protocol
X	Communications Plan - ICS 205		LCES - ICS 215A	X	Phone List
X	Medical Plan - ICS 206	X	Weather Forecast	X	Incident Map(s)
X	Air Operation Summary - ICS 220	X	Fire Behavior	X	Unit Log

Prepared by Planning Section Chief

*Mike Crawford*

Approved by Incident Commander

*Nate Letwice*

ORGANIZATION ASSIGNMENT LIST	
1. Incident Name <b>PIONEER</b>	
2. Date Prepared <b>JUNE 29, 2024</b>	3. Time Prepared <b>1800</b>
4. Operational Period <b>JUNE 30, 2024 0700 – 2100</b>	
5. Incident Commander and Staff	
Position	Name
Incident Commander	Nate LeFevre
Incident Commander (T)	Steve North
Deputy	Chris Orr
Safety Officer	Matt Broyles / Eric Brown
Information Officer	Cheyne Rossbach
Liaison	Shawn Christianson / Greg Brody (Stehekin) / Mark Suba / Rhonda Marchand (T)
Human Resources	Margaret Dietrich
6. Agency Representatives	
Agency	Name
USFS Oka/Wen Agency Admin	Chris Furr
USFS Oka/Wen Agency Admin (T)	Paul Willard
DNR Agency Administrator	Larry Leach
DNR Deputy Agency Administrator	Wyatt Leighton
NPS Agency Administrator	Don Striker
NPS Agency Representative	John Goss
NPS FMO	Matt Ellis
READ Liaison	Courtney Rowe
7. Planning Section	
Plans Section Chief	Mike Crawford
Deputy	Debbie Plummer (T)
Resource Unit	Gary Duranceau / Cari Richardson
Status Check-in	Katelyn Roeder / Charlie Hardy
Situation Unit	Shannon Theall / Ray Moeckel (T)
GIS Specialists	Aleksandar Dozic / Olivia Hughes (T)
Demob Unit	Jay Lord
Documentation Unit	Chris Oelschlager
Incident Meteorologist	Todd Carter/Maddie Kristell (T)
Fire Behavior Analyst	Steve Ziel / Michael Bowden
Long Term Fire Analyst	Brett Smith (T) (Virtual)
8. Logistics Section	
Logistics Section Chief	Franklin Vaughan / Larry Falcon (T)
Deputy	Max Yager (Stehekin) / Cindy Wedekind (Lucerne)
Facilities	Jan Robbins / Kelsy Lipp / Peter Drott (T) / Mike Prevost (T) / Randy Rector (T)

Base Camp Manager	Dave Lefevre/Mac McEntyre (T)
Supply Unit	Vicki Cunningham
IT Specialist	Mike Gascon / Chad Funnemark / Ben Smith (T)
Receiving Distribution	Michael Hanson / Karl Peterson (T) / David Richards (Stehekin)
Ordering Manager	Noe Reyes
Ground Support Unit	Casey Glade / Joe Keady
Communication Unit	Seth Baumgartner / Michael Merrick (T)
Communication Tech.	Keith Schaff / Kevin Judd
Food Unit	Kristy Naughton / John Cody/Phil Moller/Shawna Monroe (T)
Security Manager	Michael Fakier
Medical Unit	Mariann Turley / James Brown / Kevin Smith (T) (Stehekin) / Ben Meacham
9. Operations Section	
OPS Section Chief - Lead	Jon Larson / Jeff Bortner (T)
OPS Section Chief - Planning	Rob Poyner (T)
OPS Section Chief – Field	Seth Merritt
a. Branch I	
Branch Director	Thom Taylor / Josh Verellen (T)
Division A	Seth Missal / James Fields (T)
Division Z	Travis Baker/Frank Heilman (T)
b. Branch II	
Branch Director	Thom Taylor / Josh Verellen (T)
Division D	Aaron Merritt / Silas Baffa (T)
c. Branch IV	
Branch Director	Roger Goldman
Division H	Matt Ziegler / Steve Abrams (T)
c. Branch V	
Branch Director	<del>Alfred Wien</del> <b>ROGER GOLDMAN</b>
Division S	Linda Gibson / Holt Jaeger (T)
Division Contingency / Roads	Jennifer Harris/Eric Metzger (T)
Division Boat	Nate Crawford / Seth Ellis (T)
Division Staging	Jon Merager
d. Air Operations Branch	
AOB Director – Planning	Mark Hocken
AOB Director – Field	Ted Hass
10. Finance Section	
Finance Section Chief	Patty Westgate / Lori Bailey (T)
Time Unit	Beverly Hollars / Heather Wall
Procurement	Audrey Mainwaring
Comp/Claims	Kelly Lorenz (Virtual)
Cost Unit	Dede Domingos (Virtual)
Prepared by Cari Richardson, RESL	





# Fire Weather Forecast



**FORECAST NO:** 18  
**PREDICTION FOR:** 24 Hr Shift  
**SHIFT DATE:** Sunday 6/30/2024  
**TIME AND DATE ISSUED:** 6/29/2024 1900 hrs

**INCIDENT:** Pioneer Fire  
**SIGNED:** *Todd Carter*  
Incident Meteorologist (IMET)

**Discussion:**

Cooler westerly flow will enhance down lake winds on Lake Chelan. Temperatures will be a couple degrees cooler than Saturday. A few showers on the ridges can be expected with cumulus build ups. A breezy and unsettled day Saturday. Monday will be the last cool day of the week where lower elevation temperatures struggle to make 80 degrees but now showers will be in the forecast.

**WEATHER FORECAST FOR TODAY:**

**SKY/WEATHER:** Partly cloudy with a chance of showers on higher, nearby terrain. (CWR: 5 percent)  
**MAX TEMPERATURE:** 73 to 77 valleys/mid-slopes. 53 to 58 ridges above 5000 feet.  
**MIN RH:** 35 to 43 percent valleys/mid-slopes. 45-50 percent ridges above 5000 feet.  
**20 FT WINDS:**  
**Lower Valleys:** Northwest 8 to 14 mph gusts to 25 mph. Strongest wind down lake.  
**Mid-slopes and Ridges:** West to northwest 15 to 20 mph gusts to 30 mph.  
**HAINES INDEX:** 3 Very Low. **TRANSPORT WINDS:** W 15 mph.  
**INVERSION:** Little to no inversion. Mixing height of 6000 ft by 1300.

**TONIGHT:**

**SKY/WEATHER:** Partly cloudy.  
**MIN TEMPERATURE:** 50 to 56.  
**MAX RH:** 60 to 70 percent.  
**20 FT WINDS:**  
**Valleys/Lower Slopes:** Becoming lighter northwest down lake 8 to 12 mph gusts to 20 mph in the evening.  
**Mid-Slopes and Ridges:** Becoming northwest 10 mph gusts to 25 mph in the evening.  
**INVERSION:** Developing after 2200 hrs to near 1000 ft.

**MONDAY:**

**SKY/WEATHER:** Partly cloudy and continued breezy.  
**MAX TEMPERATURE:** 71 to 77 valleys/mid-slopes. 50 to 58 ridges above 5000 feet.  
**MIN RH:** 35 to 43 percent valleys/mid-slopes. 45 to 50 ridges.  
**20 FT WINDS:**  
**Lower Valleys:** Northwest 9 to 14 mph gusts to 25 mph. Strongest wind down lake.  
**Mid-slopes and Ridges:** West to northwest around 15 mph gusts to 30 mph.  
**HAINES INDEX:** 2 Very Low. **TRANSPORT WINDS:** S 10 mph.

**Boating concerns Saturday:** Higher waves estimated at least 2 feet on Lake Chelan windier straits.  
**Aviation concerns Saturday:** Temperature near 18C at 4000 feet for load calcs. Ridge Winds coming from a northwest direction 10 to 15 kts. Watch for lee side mechanical turbulence.

Weather observations can be texted to 509-319-0474 or emailed to [todd.carter@noaa.gov](mailto:todd.carter@noaa.gov)



## Fire Behavior Forecast # 19

<b>Name of Incident:</b> Pioneer	<b>Administrative Unit:</b> SE Region DNR / Okanogan-Wenatchee NF
<b>Date &amp; Time Issued:</b> June 29, 2024 @ 2000	<b>Operational Period:</b> DAY 06/30/2024
<b>FBAN:</b> Steve Ziel	<b>Signed:</b> /z/

**Assumptions:** *Partly cloudy, cooler, RH generally around 40%. Drying has been slow, but expect a progressive warming and drying trend that should result in increased fire behavior in the coming days. Current fuel conditions will support limited fire spread (until sufficient drying occurs). Potential fire behavior is being inhibited by fuel condition and discontinuity. Expect limited (low) burning conditions in exposed fine fuels between 1300-1700. Persistent burning and heat retention in heavy fuels will serve as ignition sources as drying occurs. Live fuels are not contributing to fire spread (yet). Lake effect winds (up or down lake) dominate lower and mid slopes; the fire areas is on a SW aspect with steep side drainages that provide upslope winds. Wind/slope alignment and/or lake wind will influence drying rate and fire spread. Expect down lake gusty winds, with gusts to 30 mph on ridgetops .*

### Weather Summary

\*See attached Fire Weather Forecast

### Fire Behavior Summary

**Fuels in the fire area** are composed of a mosaic of *Timber Litter, Grass, Timber with Understory, and Grass/Shrub* models. The fire is burning in the Rex Creek (2001) fire footprint. Primary tree species include mixed sizes and densities of Douglas Fir and Ponderosa Pine. Local timber litter is compact to fluffy. Brush and understory species include ceanothus, hardwoods, and dog-hair conifer reproduction. Large snags and heavy downed fuel loadings are common throughout all areas. Live woody and herbaceous fuels are seasonally moist, and not contributing to rates of spread; grasses are partially to fully cured. Fuel conditions change by aspect, previous fire history, and soil moisture. Low crown base height (ladder fuels) is present in most of the timbered areas.

*Today's **Maximum potential fire behavior** may include isolated pockets/areas of smoldering, creeping, and limited spread with wind/slope alignment. Primary spread mechanism has been backing with rollout, flanking, and limited head fire spread. Heavy fuels are retaining heat and will serve as ignition sources as fine fuels dry from wind and lower RH during the burn period. Early season fuel condition is inhibiting full fire behavior potential – live fuels are moist, some grasses are still curing.*

\* **FFM= 7%-9%, 1000hr. moisture=12%, Woody fuels 170%, Probability of Ignition-40-50%, Max Spotting < 0.2**

Fuel Type	Rate of Spread	Flame Length	Backing ROS	35 MPH Gust – Ridgetop
... If your work area includes -	(CH/HR = FPM)	Feet	FPM	FPM
GR2 - Moderate load grass/shrub	2 - 3	<2	< 1	2 - 3
SH2 – Moderate load shrub	1 - 2	2	< 1	5-7
TU5 - High load Timber w/ Understory	8 - 9	6-7	< 1	20-25
TL8 – Long needle timber litter	8 - 9	3-4	< 1	20-25

### Specific Assignments:

**Div. A** – Expect smoldering, backing, and limited flanking in upper Meadow Cr./ Cascade Cr. Heavy fuels will continue to consume.

**Div. Z** – Ragged edge fire edge on north side of Prince Cr will smolder, flank, and back with rollout. No Name creek may show flames.

**Other Divisions** – Should not be affected by fire activity during the burn period. Monitor smoke direction and amount. Assess fuels.

**\*IA** – Ensure good size-up before engaging. Assess fire spread potential based on fuel, weather, topography and values at risk.

**Air Operations:** NW ridgetop wind gusts to 20 mph by afternoon. Monitor ridge top wind gusting to 30 mph.

### Safety

Sudden flare-ups are possible, multiple flare-ups may occur with winds. Multiple simultaneous fire situations become critical without LCES. Plan ahead for actions to take; travel takes time!! Review the Watch Out Situations with your resources– can you mitigate??

Isolated flare-up are possible in areas that have not shown activity for a couple days. Snags may fall into fresh fuel. Winds may kindle smoldering fuels to flame.....(review Common Denominators of Fire Behavior on Tragedy Fires (Page 3 – IRPG).

*\*Today's Fire Behavior Forecast contains 671 words written for your situational awareness.*

<b>DIVISION ASSIGNMENT LIST</b>			1. Branch <b>I</b>		2. Division / Group <b>A</b>		
3. Incident Name <b>Pioneer</b>			4. Operational Period Date: <b>06/30/2024</b> Time: <b>0700-2100</b>				
5. Operations Personnel							
Operations Chief		Jon Larson / Jeff Bortner(T)		Division / Group Supervisor		Seth Missal / James Fields (T)	
Operations Chief (Plans)		Rob Poyner (T)		Branch Director		Thom Taylor / Josh Verellen (T)	
Safety Officer		Matt Broyles / Eric Brown		Air Attack Supervisor		Chad Bergren	
6. Resources Assigned this Period							
	Strike Team / Task Force / Resource Designator	Leader	Number Persons	Tentative Last Work Day	Drop Off Pt / Time	Pick Up Pt / Time	
1.	O-179 TFLD	Charlie Humbert	1	7/9	DP-22 / Moore Point	DP-22 / Moore Point	
2.	O-180 TFLD	Joe Landburg	1	7/10	DP-22 / Moore Point	DP-22 / Moore Point	
3.	O-266 TFLD (T)	Frank Bojorquez	1	7/12	DP-22 / Moore Point	DP-22 / Moore Point	
4.							
5.	O-187 WFM1 Grass Lake	William Johnson	9	7/7	DP-22 / Moore Point	DP-22 / Moore Point	
6.	O-127 FMOD Rainstorm	Kendall Cain	2	7/8	DP-27 / Lucerne	DP-27 / Lucerne	
7.	O-128 FMOD Rainstorm	Mike Lind	2	7/8	DP-27 / Lucerne	DP-27 / Lucerne	
8.	O-129 FELB	Mel Tenneson	1	7/1	DP-27 / Lucerne	DP-27 / Lucerne	
9.							
10.	**C-13 CRW1 Vale IHC	Glen Heitz	20	7/4	DP-26	DP-26	
11.							
12.	O-67 MEDIC 3	Adam Lathrop	1	7/4	DP-22 Moore Point	DP-22 Moore Point	
13.	O-137 EMT 3	James Franklin	1	7/1	DP-26	DP-26	
14.	O-153 EMT 2	Aiden Noel	1	7/1	DP-22 / Moore Point	DP-22 / Moore Point	
15.							
16.	O-174.52 SOFR	George Libercajt	1	7/7	DP-27 / Lucerne	DP-27 / Lucerne	
17.	O-142 SOF2	Kelly Jensen	1	7/1	DP-27 / Lucerne	DP-27 / Lucerne	
18.	O-175 SOFR	Melissa Moore	1	7/4	DP-22 / Moore Point	DP-22 / Moore Point	
19.							
20.							
21.							
7. Control Operations							
<b>Task: Contain fire spread to the northwest where terrain and fuels allow for highest probability of success. Assess fire perimeter progression to the north and west at higher elevations. Implement point protection efforts on federal &amp; private infrastructure.</b>							
<b>Purpose: To slow fire progression, provide time for suppression tactics, and continue to prep around critical values.</b>							
<b>End state: Minimize fire impacts to critical values including private inholdings and Forest Service infrastructure.</b>							
8. Special Instructions							
<ul style="list-style-type: none"> <li>In large or long term spike camps use helicopters, boats, or pack stock to deliver portable backcountry latrines and remove human waste if necessary. If camp does not have adequate pack, boat, or air support for human waste management, establish community latrines well away from water sources and common areas. Use human waste bags, if necessary.</li> <li>Minimize ground disturbance on the Moore Point and Meadow Creek alluvial fans in order to protect sensitive resources.</li> <li>Hose used from Prince Creek to Moore Pt: contaminated with invasive plants. Do not reuse. Backhaul to Moore Pt DP22 and store in "infested hose" area at Moore Pt until decontaminated.</li> <li>** Denotes available for Initial Attack</li> </ul>							
9. Division / Group Communication Summary							
Function	Frequency	System	Channel	Function	Frequency	System	Channel
Command Repeater	See Comm Plan			Command	See Comm. Plan		
TAC				Air To Ground	See Comm. Plan		
Prepared by (Resource Unit Leader): Name: Gary Duranceau			Approved by (Planning Section Chief) Name: Mike Crawford			Date 6/29/24	Time 1900



<b>DIVISION ASSIGNMENT LIST</b>				1. Branch <b>I</b>		2. Division / Group <b>Z</b>	
3. Incident Name <b>Pioneer</b>				4. Operational Period Date: <b>06/30/2024</b> Time: <b>0700-2100</b>			
5. Operations Personnel							
Operations Chief		Jon Larson / Jeff Bortner (T)		Division / Group Supervisor		Travis Baker / Frank Heilman (T)	
Operations Chief (Plans)		Rob Poyner (T)		Branch Director		Thom Taylor / Josh Verellen (T)	
Safety Officer		Matt Broyles / Eric Brown		Air Attack Supervisor		Chad Bergren	
6. Resources Assigned this Period							
	Strike Team / Task Force / Resource Designator		Leader	Number Persons	Tentative Last Work Day	Drop Off Pt / Time	Pick Up Pt / Time
1.	O-182 WFM1 Selway		JT Sohr	14	7/8	DP-34	DP-34
2.							
3.	A-78 UR-31		Marshal Wallace	35	7/9	DP-34	DP-34
4.							
5.	O-51 MEDIC 1		Remington Becker	1	7/2	DP-34	DP-34
6.	O-307 MEDIC 8		Rick Kelly	1	7/12	DP-34	DP-34
7.							
8.	O-174.52 SOFR		George Libercajt	1	7/7	DP-27 / Lucerne	DP-27 / Lucerne
9.							
10.							
11.							
12.							
13.							
14.							
15.							
7. Control Operations							
<b>Task:</b> Contain fire spread to the southeast where terrain and fuels allow for high probability of success. Assess fire perimeter progression to the east/southeast at higher elevations.							
<b>Purpose:</b> To slow fire progression, provide time for suppression tactics, and continue to prep around critical values.							
<b>End state:</b> Minimize fire impacts to critical values including private inholdings and Forest Service infrastructure							
8. Special Instructions							
<ul style="list-style-type: none"> <li>In large or long term spike camps use helicopters, boats, or pack stock to deliver portable backcountry latrines and remove human waste if necessary. If camp does not have adequate pack, boat, or air support for human waste management, establish community latrines well away from water sources and common areas. Use human waste bags, if necessary.</li> <li>Ensure hazard mitigations and IWI protocols are in place before taking action.</li> <li>Hose used from Prince Creek to Moore Pt: contaminated with invasive plants. Do not reuse. Backhaul to Moore Pt DP22 and store in "infested hose" area at Moore Pt until decontaminated.</li> </ul>							
9. Division / Group Communication Summary							
Function	Frequency	System	Channel	Function	Frequency	System	Channel
Command Repeater	See Comm Plan			Command	See Comm. Plan		
TAC				Air To Ground	See Comm. Plan		
Prepared by (Resource Unit Leader): Name: Gary Duranceau			Approved by (Planning Section Chief) Name: Mike Crawford			Date 6/29/24	Time 1900

DIVISION ASSIGNMENT LIST			1. Branch <b>II</b>		2. Division / Group <b>D</b>		Page 1 of 2	
3. Incident Name <b>Pioneer</b>			4. Operational Period Date: <b>06/30/2024</b> Time: <b>0700-2100</b>					
5. Operations Personnel								
Operations Chief		Jon Larson / Jeff Bortner (T)		Division / Group Supervisor		Aaron Merritt / Silas Baffa (T)		
Operations Chief (Plans)		Rob Poyner (T)		Branch Director		Thom Taylor / Josh Verellen (T)		
Safety Officer		Matt Broyles / Eric Brown		Air Attack Supervisor		Chad Bergren		
6. Resources Assigned this Period								
Strike Team / Task Force / Resource Designator		Leader	Number Persons	Tentative Last Work Day	Drop Off Pt / Time		Pick Up Pt / Time	
1.	O-183 TFLD	Harley Hamman	1	7/6	Stehekin		Stehekin	
2.								
3.	O-170 THSP	Tanya Neider	1	7/3	Stehekin		Stehekin	
4.								
5.	O-122 HECM	Nick DePanlu	4	7/1	Stehekin		Stehekin	
6.								
7.	O-147 SMOD LNP CREW 76	Sara Martinez	7	7/3	Stehekin		Stehekin	
8.	O-148 SMOD HVP CREW 1	Brent Webb	10	7/3	Stehekin		Stehekin	
9.	O-278 SMOD Crew 84	Geoff Hibbs	3	7/10	Stehekin		Stehekin	
10.	**O-218 WFM2 Olympic	Jonah Gray	10	7/6	Stehekin		Stehekin	
11.								
12.	O-184 FELB	Marty Cozart	1	7/6	Stehekin		Stehekin	
13.	O-186 FMOD Kintner Timber	Cory Kintner	2	7/6	Stehekin		Stehekin	
14.	O-185 FMOD Brothers Fire	Levi Merritt	2	7/6	Stehekin		Stehekin	
15.								
16.								
17.								
18.								
19.								
7. Control Operations								
<b>Task:</b> Continue construction of contingency lines around the community of Stehekin.								
<b>Purpose:</b> Minimize fire impacts to critical values including private inholdings, the community of Stehekin, and Forest Service infrastructure.								
<b>End state:</b> Critical values including private inholdings, the community of Stehekin, and Forest Service infrastructure are not impacted by the Pioneer fire, while minimizing fire impacts and acres burned utilizing historic wildfire control features and natural barriers.								
8. Special Instructions								
<ul style="list-style-type: none"> <li>In large or long term spike camps use helicopters, boats, or pack stock to deliver portable backcountry latrines and remove human waste if necessary. If camp does not have adequate pack, boat, or air support for human waste management, establish community latrines well away from water sources and common areas. Use human waste bags, if necessary.</li> <li>All operational personnel working on USFS lands will need to conduct a thorough inspection for invasive species seeds on boots including laces, clothing, and gear prior to entering NPS lands.</li> <li>Only fresh (direct from the cache) hose should be utilized on NPS lands to prevent the transport of invasive species seeds.</li> <li>Hose used on USFS lands should not be used on NPS lands and hose used on NPS lands should not be used on USFS lands to prevent the spread of invasives species seeds.</li> <li>Cargo loads being transported onto NPS lands should be inspected for invasive weed seed prior to flight.</li> <li>Ensure hazard mitigations and IWI protocols are in place before taking action.</li> <li>NPS Resource Avoidance Area Flagging is yellow with red polka dots. Contact NPS READs before working in areas where this flagging is present.</li> <li>** Denotes available for Initial Attack</li> </ul>								
9. Division / Group Communication Summary								
Function	Frequency	System	Channel	Function	Frequency	System	Channel	
Command Repeater	See Comm Plan			Command	See Comm. Plan			
TAC				Air To Ground	See Comm. Plan			
Prepared by (Resource Unit Leader): Name: Gary Duranceau			Approved by (Planning Section Chief) Name: Mike Crawford			Date 6/29/24	Time 1900	



<b>DIVISION ASSIGNMENT LIST</b>		1. Branch <b>II</b>	2. Division / Group <b>D</b>	Page 2 of 2			
3. Incident Name <b>Pioneer</b>		4. Operational Period Date: <b>06/30/2024</b> Time: <b>0700-2100</b>					
5. Operations Personnel							
Operations Chief	Jon Larson / Jeff Bortner (T)		Division / Group Supervisor	Aaron Merritt / Silas Baffa (T)			
Operations Chief (Plans)	Rob Poyner (T)		Branch Director	Thom Taylor / Josh Verellen (T)			
Safety Officer	Matt Broyles / Eric Brown		Air Attack Supervisor	Chad Bergren			
6. Resources Assigned this Period							
	Strike Team / Task Force / Resource Designator	Leader	Number Persons	Tentative Last Work Day	Drop Off Pt / Time	Pick Up Pt / Time	
20.	<b>O-125 READ</b>	<b>Cedar Drake</b>	<b>1</b>	<b>7/1</b>	<b>Stehekin</b>	<b>Stehekin</b>	
21.	<b>O-166 REAF</b>	<b>Jordan Spaak</b>	<b>1</b>	<b>7/6</b>	<b>Stehekin</b>	<b>Stehekin</b>	
22.	<b>O-235 REAF</b>	<b>Cade Simpson</b>	<b>1</b>	<b>7/7</b>	<b>Stehekin</b>	<b>Stehekin</b>	
23.	<b>O-167 ARCH</b>	<b>Jason Wright</b>	<b>1</b>	<b>7/12</b>	<b>Stehekin</b>	<b>Stehekin</b>	
24.	<b>O-168 ARCH</b>	<b>Ernest Wingate</b>	<b>1</b>	<b>7/6</b>	<b>Stehekin</b>	<b>Stehekin</b>	
25.							
26.	<b>O-165 REMS 2</b>	<b>Brayden Kirk</b>	<b>4</b>	<b>7/10</b>	<b>Stehekin</b>	<b>Stehekin</b>	
27.	<b>O-174.79 MEDL (T)</b>	<b>Kevin Smith</b>	<b>1</b>	<b>7/2</b>	<b>Stehekin</b>	<b>Stehekin</b>	
28.							
29.	<b>O-174.88 SOFR</b>	<b>Leo Engleson</b>	<b>1</b>	<b>7/7</b>	<b>Stehekin</b>	<b>Stehekin</b>	
30.							
31.	<b>E-119 Driver</b>	<b>Stephen Bouche</b>	<b>1</b>	<b>7/3</b>	<b>Stehekin</b>	<b>Stehekin</b>	
32.							
33.							
34.							
35.							
7. Control Operations							
<b>Task:</b> Continue construction of contingency lines around the community of Stehekin.							
<b>Purpose:</b> Minimize fire impacts to critical values including private inholdings, the community of Stehekin, and Forest Service infrastructure.							
<b>End state:</b> Critical values including private inholdings, the community of Stehekin, and Forest Service infrastructure are not impacted by the Pioneer fire, while minimizing fire impacts and acres burned utilizing historic wildfire control features and natural barriers.							
8. Special Instructions							
<ul style="list-style-type: none"> <li>• In large or long term spike camps use helicopters, boats, or pack stock to deliver portable backcountry latrines and remove human waste if necessary. If camp does not have adequate pack, boat, or air support for human waste management, establish community latrines well away from water sources and common areas. Use human waste bags, if necessary.</li> <li>• All operational personnel working on USFS lands will need to conduct a thorough inspection for invasive species seeds on boots including laces, clothing, and gear prior to entering NPS lands.</li> <li>• Only fresh (direct from the cache) hose should be utilized on NPS lands to prevent the transport of invasive species seeds.</li> <li>• Hose used on USFS lands should not be used on NPS lands and hose used on NPS lands should not be used on USFS lands to prevent the spread of invasives species seeds.</li> <li>• Cargo loads being transported onto NPS lands should be inspected for invasive weed seed prior to flight.</li> <li>• Ensure hazard mitigations and IWI protocols are in place before taking action.</li> <li>• NPS Resource Avoidance Area Flagging is yellow with red polka dots. Contact NPS READs before working in areas where this flagging is present.</li> <li>• ** Denotes available for Initial Attack.</li> </ul>							
9. Division / Group Communication Summary							
Function	Frequency	System	Channel	Function	Frequency	System	Channel
Command Repeater	See Comm Plan			Command	See Comm. Plan		
TAC				Air To Ground	See Comm. Plan		
Prepared by (Resource Unit Leader): Name: Gary Duranceau			Approved by (Planning Section Chief): Name: Mike Crawford			Date: 6/29/24	Time: 1900

<b>DIVISION ASSIGNMENT LIST</b>			1. Branch <b>IV</b>		2. Division / Group <b>H</b>		
3. Incident Name <b>Pioneer</b>			4. Operational Period Date: <b>06/30/2024</b> Time: <b>0700-2100</b>				
5. Operations Personnel							
Operations Chief		Jon Larson / Jeff Bortner (T)		Division / Group Supervisor		Matt Ziegler / Steve Abrams (T)	
Operations Chief (Plans)		Rob Poyner (T)		Branch Director		Roger Goldman	
Safety Officer		Matt Broyles / Eric Brown		Air Attack Supervisor		Chad Bergren	
6. Resources Assigned this Period							
	Strike Team / Task Force / Resource Designator		Leader	Number Persons	Tentative Last Work Day	Drop Off Pt / Time	Pick Up Pt / Time
1.	O-112 TFLD		David Ortlund	1	7/1	ICP	ICP
2.	O-113 TFLD (T)		Gavin Young	1	7/1	ICP	ICP
3.							
4.	E-102 SKG2 Dukes Equipment		Matt Sveen	2	7/13	ICP	ICP
5.	E-103 MBM2 Marcon Timber		Dave Landes	2	7/1	ICP	ICP
6.	E-104 MBM2 Havillah Logging		Albert Johnson	2	7/1	ICP	ICP
7.	E-105 MBM2 Justin Pitts		Justin Pitts	2	7/1	ICP	ICP
8.							
9.	E-178 WTS2 Northern Construction		Robert Hollandsworth	1	7/12	ICP	ICP
10.							
11.	O-267 SOFR		Tom Talbot	1	7/10	ICP	ICP
12.							
13.							
14.							
15.							
16.							
17.							
18.							
19.							
20.							
7. Control Operations							
<b>Task:</b> Continue road work on both sides of the Gold Creek Rd from DP-101 to DP-72 by removing brush and debris no more than 6ft from the edge of roadway and that which causes obstructions to visibility around corners.							
<b>Purpose:</b> To provide better access and facilitate safe firefighter traffic on the Gold Creek corridor.							
<b>End state:</b> Improve roadways to provide safer and more efficient travel.							
8. Special Instructions							
<ul style="list-style-type: none"> <li>In large or long term spike camps use helicopters, boats, or pack stock to deliver portable backcountry latrines and remove human waste if necessary. If camp does not have adequate pack, boat, or air support for human waste management, establish community latrines well away from water sources and common areas. Use human waste bags, if necessary.</li> <li>Ensure hazard mitigations and IWI protocols are in place before taking action.</li> <li>Draft sites must be reviewed by READ.</li> </ul>							
9. Division / Group Communication Summary							
Function	Frequency	System	Channel	Function	Frequency	System	Channel
Command Repeater	See Comm Plan			Command	See Comm. Plan		
TAC				Air To Ground	See Comm. Plan		
Prepared by (Resource Unit Leader): Name: Gary Duranceau			Approved by (Planning Section Chief) Name: Mike Crawford			Date 6/29/24	Time 1900

TO CONT.



DIVISION ASSIGNMENT LIST		1. Branch	2. Division / Group		Page 1 of 2		
3. Incident Name <b>Pioneer</b>		4. Operational Period Date: <b>06/30/2024</b> Time: <b>0700-2100</b>					
5. Operations Personnel							
Operations Chief	Jon Larson / Jeff Bortner (T)		Division / Group Supervisor	Linda Gibson / Holt Jaeger (T)			
Operations Chief (Plans)	Rob Poyner (T)		Branch Director	<del>Alfred Wehl</del> <b>ROGER GOLDMAN</b>			
Safety Officer	Matt Broyles / Eric Brown		Air Attack Supervisor	Chad Bergren			
6. Resources Assigned this Period							
Strike Team / Task Force / Resource Designator	Leader	Number Persons	Tentative Last Work Day	Drop Off Pt / Time	Pick Up Pt / Time		
1. O-110 TFLD	Shane Clifton	1	6/30	ICP	ICP		
2. O-111 TFLD (T)	Lars Olson	1	6/30	Camp 4 Spike	Camp 4 Spike		
3. O-178 TFLD	Andrew Schaffran	1	7/9	ICP	ICP		
4. **O-249 TFLD (T)	Mark Harper	1	7/9	ICP	ICP		
5. O-126 FMOD Fire Contracting Serv.	Ethan Wilson	2	7/1	Camp 4 Spike	Camp 4 Spike		
6. O-130 FELB	Rob Winkler	1	7/2	Camp 4 Spike	Camp 4 Spike		
7.							
8. **C-18 CR2I Colville	Jacob Morse	21	7/6	Camp 4 Spike	Camp 4 Spike		
9.							
10. **E-118 ENG6 Little Pend Oreille	Thomas Boggs	3	7/1	Camp 4 Spike	Camp 4 Spike		
11. E-118 HEQB	Dillon Bigler	1	7/1	Camp 4 Spike	Camp 4 Spike		
12. E-118 HEQB (T)	Pedro Gomez	1	7/1	Camp 4 Spike	Camp 4 Spike		
13.							
14. E-73 WTS1 Strand Tenders	Wade Strand	1	7/11	Camp 4 Spike	Camp 4 Spike		
15. E-74 WTS2 MVP Team	Dale Conrad	1	7/12	ICP	ICP		
16. E-75 WTS2 David Rains	Ron Laymance	1	7/16	ICP	ICP		
17. E-76 WTS2 Mountain View Wildfire	Wick Fife	1	7/1	ICP	ICP		
18. E-78 WTS2 King Hydroseeding	Don Warden	1	7/10	Camp 4 Spike	Camp 4 Spike		
19. E-83 WTS2 King Hydroseeding	Joe Ivie	1	7/11	ICP	ICP		
20. E-156 WTS2 King Hydroseeding	Wes Bodenhamer	1	7/8	ICP	ICP		
21.							
22.							
7. Control Operations <b>Task:</b> Implementation of control from South Navaree CG to Lake Chelan. Increase ingress and egress to the fire area. <b>Purpose:</b> To establish a barrier to fire to the east of Safety Harbor Creek. <b>End state:</b> Control line anchored from South Navaree CG to Lake Chelan.							
8. Special Instructions <ul style="list-style-type: none"> <li>Ensure hazard mitigations and IWI protocols are in place before taking action.</li> <li>** Denotes available for Initial Attack</li> </ul>							
9. Division / Group Communication Summary							
Function	Frequency	System	Channel	Function	Frequency	System	Channel
Command Repeater	See Comm Plan			Command	See Comm. Plan		
TAC				Air To Ground	See Comm. Plan		
Prepared by (Resource Unit Leader): Name: Gary Duranceau			Approved by (Planning Section Chief) Name: Mike Crawford		Date 6/29/24	Time 1900	

<b>DIVISION ASSIGNMENT LIST</b>				1. Branch <b>V</b>	2. Division / Group <b>S</b>	<b>Page 2 of 2</b>	
3. Incident Name <b>Pioneer</b>				4. Operational Period Date: <b>06/30/2024</b> Time: <b>0700-2100</b>			
5. Operations Personnel							
Operations Chief		Jon Larson / Jeff Bortner (T)		Division / Group Supervisor		Linda Gibson / Holt Jaeger (T)	
Operations Chief (Plans)		Rob Poyner (T)		Branch Director		<del>Alfred Wiehl</del> <b>ROGER GOLDMAN</b>	
Safety Officer		Matt Broyles / Eric Brown		Air Attack Supervisor		Chad Bergren	
6. Resources Assigned this Period							
	Strike Team / Task Force / Resource Designator	Leader	Number Persons	Tentative Last Work Day	Drop Off Pt / Time	Pick Up Pt / Time	
23.	O-68 MEDIC 2	Joel Bower	1	7/3	ICP	ICP	
24.	O-43 REMS1	Ray Storm	5	7/9	Camp 4 Spike	Camp 4 Spike	
25.							
26.	O-141 SOFR	Kevin Pfister	1	7/2	Camp 4 Spike	Camp 4 Spike	
27.							
28.	E-18 UTV						
29.	E-93 UTV						
30.	E-94 UTV						
31.	E-148 UTV						
32.	E-149 UTV						
33.							
34.							
35.							
36.							
37.							
38.							
39.							
40.							
41.							
42.							
43.							
44.							
45.							
46.							
47.							
7. Control Operations <b>Task:</b> Implementation of control from South Navaree CG to Lake Chelan. Increase ingress and egress to the fire area. <b>Purpose:</b> To establish a barrier to fire to the east of Safety Harbor Creek. <b>End state:</b> Control line anchored from South Navaree CG to Lake Chelan.							
8. Special Instructions							
<ul style="list-style-type: none"> <li>• Ensure hazard mitigations and IWI protocols are in place before taking action.</li> <li>• ** Denotes available for Initial Attack</li> </ul>							
9. Division / Group Communication Summary							
Function	Frequency	System	Channel	Function	Frequency	System	Channel
Command Repeater	See Comm Plan			Command	See Comm. Plan		
TAC				Air To Ground	See Comm. Plan		
Prepared by (Resource Unit Leader): Name: Gary Duranceau				Approved by (Planning Section Chief) Name: Mike Crawford		Date 6/29/24	Time 1900



<b>DIVISION ASSIGNMENT LIST</b>		1. Branch <b>V</b>	2. Division / Group <b>Contingency/Roads Page 1 of 2</b>				
3. Incident Name <b>Pioneer</b>		4. Operational Period Date: <b>06/30/2024</b> Time: <b>0700-2100</b>					
5. Operations Personnel							
Operations Chief	Jon Larson / Jeff Bortner (T)		Division / Group Supervisor	Jennifer Harris / Eric Metzger (T)			
Operations Chief (Plans)	Rob Poyner (T)		Branch Director	Alfred Wiehl / Roger Goldman			
Safety Officer	Matt Broyles / Eric Brown		Air Attack Supervisor	Chad Bergren			
6. Resources Assigned this Period							
	Strike Team / Task Force / Resource Designator	Leader	Number Persons	Tentative Last Work Day	Drop Off Pt / Time	Pick Up Pt / Time	
1.	<b>**O-239 TFLD</b>	Kory Garrie	1	7/9	ICP	ICP	
2.	<b>O-245 TFLD</b>	Noah Daniels	1	7/10	ICP	ICP	
3.	<b>O-114 TFLD (T)</b>	TJ Whitehall	1	7/1	End Mt Spike	End Mt Spike ICP	
4.	<b>**O-257 TFLD (T)</b>	Craig McDonald	1	7/9	ICP	ICP	
5.							
6.	<b>O-115 HEQB</b>	Garrett Hanson	1	6/30	ICP	ICP	
7.	<b>O-241 HEQB</b>	Jason Green	1	7/9	ICP	ICP	
8.	<b>O-242 HEQB</b>	Travis Parker	1	7/9	ICP	ICP	
9.	<b>O-243 HEQB</b>	Everardo Santillan	1	7/9	ICP	ICP	
10.	<b>O-116 HEQB (T)</b>	Tyler Meyer	1	6/30	ICP	ICP	
11.	<b>O-117 HEQB (T)</b>	Ian Fox	1	6/30	ICP	ICP	
12.	<b>O-330 HEQB</b>	Asa Ray	1	7/6	ICP	ICP	
13.	<b>O-337 HEQB (T)</b>	Brandon Humpherys	1	7/6	ICP	ICP	
14.							
15.	<b>**C-19 CR2I Cle Elum RD</b>	Cris Machado	18	7/8	End Mt Spike	End Mt Spike	
16.	<b>C-23 CR2I SRV1</b>	Jaime Medrano	23	7/11	ICP	ICP	
17.							
18.	<b>**E-117 ENG6 Wenatchee River</b>	Nicholas Gonzales	5	7/3	ICP	ICP	
19.	<i>om + norm 3</i> <b>E-178 WTS2 NORTHERN CO. Robert Hollandsworth</b>	<i>Robert Hollandsworth</i>	<i>1</i>	<i>7/12</i>	<i>ICP</i>	<i>ICP</i>	
20.	<b>E-76 WTS2 MT. VIEW Wildfire</b>	<b>WICK FIRE</b>	<b>1</b>	<b>7/1</b>	<b>ICP</b>	<b>ICP</b>	
21.	<b>E-83 WTS2 King HydroSeeding</b>	<b>JOE IVIE</b>	<b>1</b>	<b>7/11</b>	<b>ICP</b>	<b>ICP</b>	
7. Control Operations							
<b>Task:</b> Scout proposed control lines at Oss Peak and Johnson Creek. <del>Assess structures from Deer Point to Mitchell Creek.</del> Implement control lines from H41 to DP76. Continue road maintenance on 4330 and 4010.							
<b>Purpose:</b> To protect critical values at risk.							
<b>End state:</b> To have established control lines in place that correspond to Pioneer Fire strategic plan.							
8. Special Instructions							
<ul style="list-style-type: none"> <li>• Ensure hazard mitigations and IWI protocols are in place before taking action.</li> <li>• Contingency resources working DIV H: Draft sites must be reviewed by READ.</li> <li>• Work with READS to maintain resource protection.</li> <li>• ** Denotes available for Initial Attack.</li> </ul>							
9. Division / Group Communication Summary							
Function	Frequency	System	Channel	Function	Frequency	System	Channel
Command Repeater	See Comm Plan			Command	See Comm. Plan		
TAC				Air To Ground	See Comm. Plan		
Prepared by (Resource Unit Leader): Name: Gary Duranceau			Approved by (Planning Section Chief) Name: Mike Crawford			Date 6/29/24	Time 1900

<b>DIVISION ASSIGNMENT LIST</b>			1. Branch <b>V</b>		2. Division / Group <b>Contingency/Roads</b>			Page 2 of 2		
3. Incident Name <b>Pioneer</b>			4. Operational Period Date: <b>06/30/2024</b> Time: <b>0700-2100</b>							
5. Operations Personnel										
Operations Chief		Jon Larson / Jeff Bortner (T)		Division / Group Supervisor		Jennifer Harris / Eric Metzger (T)				
Operations Chief (Plans)		Rob Poyner (T)		Branch Director		<del>Alfred Wiehl</del> / Roger Goldman				
Safety Officer		Matt Broyles / Eric Brown		Air Attack Supervisor		Chad Bergren				
6. Resources Assigned this Period										
Strike Team / Task Force / Resource Designator		Leader		Number Persons	Tentative Last Work Day	Drop Off Pt / Time		Pick Up Pt / Time		
22.	E-157 WTS2 Pine Mountain Exc.	Bob Goss		1	7/8	ICP		ICP		
23.	E-172 WTS2 Upper Valley	Joseph <del>Schoenmakers</del>		1	7/12	ICP		ICP		
24.	E-173 WTS2 Ridgetop Iron	Tim Whitehurst		1	7/12	ICP		ICP		
25.	E-174 WTS2 Upper Valley	Jim Smith		1	7/12	ICP		ICP		
26.	E-154 SKG2 Western	Rick Lauman		2	7/8	ICP		ICP		
27.	E-155 SKG2 Mountain View	Shawn Beaman		2	7/8	ICP		ICP		
28.	E-179 WTS2 King Hydroseal	Cosmo TAN		1	7/13	ICP		ICP		
29.	E-92 DZR3 Batchelor Excavation	Al Steele		2	7/11	ICP		ICP		
30.	E-100 DZR4 Douglas Logging	Steve Douglas		2	7/1	ICP		ICP		
31.	E-143 EXC2 Delange Enterprises	Pete Delange		2	7/5	ICP		ICP		
32.	E-71 GRD2 Scotts Excavating	Pettet		2	7/4	ICP		ICP		
33.	E-72 GRD2 Scotts Excavating	Wyatt Radke		2	7/13	ICP		ICP		
34.	E-69 FTRA Morris Forestry	Rudy Morris		1	7/14	ICP		ICP		
35.	E-151 MBM2 Dukes	Chris Boles		2	7/8	ICP		ICP		
36.	E-152 MBM2 Axsus	John Cisneros		2	7/10	ICP		ICP		
37.										
38.	O-76 MEDIC 5	Brian Linacre		1	7/7	End Mt Spike		End Mt Spike		
39.	O-271 MEDIC 7	Steve Drab		1	7/11	ICP		ICP		
40.										
41.	O-189 SOF2	John Nickey		1	7/1	ICP		ICP		
42.										
43.	E-19 UTV					ICP		ICP		
44.	E-44 UTV					ICP		ICP		
7. Control Operations										
<p><b>Task:</b> Scout proposed control lines at Oss Peak and Johnson Creek. <del>Assess structures from Deer Point to Mitchell Creek.</del> Implement control lines from H41 to DP76. Continue road maintenance on 4330 and 4010.</p> <p><b>Purpose:</b> To protect critical values at risk.</p> <p><b>End state:</b> To have established control lines in place that correspond to Pioneer Fire strategic plan.</p> <ul style="list-style-type: none"> <li>• Special Instructions</li> <li>• Ensure hazard mitigations and IWI protocols are in place before taking action.</li> <li>• Contingency resources working DIV H: Draft sites must be reviewed by READ.</li> <li>• Work with READS to maintain resource protection.</li> <li>• ** Denotes available for Initial Attack</li> </ul>										
8. Division / Group Communication Summary										
Function	Frequency	System	Channel	Function	Frequency	System	Channel			
Command Repeater	See Comm Plan			Command	See Comm. Plan					
TAC				Air To Ground	See Comm. Plan					
Prepared by (Resource Unit Leader): Name: Gary Duranceau				Approved by (Planning Section Chief) Name: Mike Crawford			Date 6/29/24	Time 1900		



<b>DIVISION ASSIGNMENT LIST</b>		1. Branch <b>V</b>	2. Division / Group <b>Staging</b>				
3. Incident Name <b>Pioneer</b>		4. Operational Period Date: <b>06/30/2024</b> Time: <b>0700-2100</b>					
5. Operations Personnel							
Operations Chief	Jon Larson / Jeff Bortner (T)		Division / Group Supervisor	Jon Merager			
Operations Chief (Plans)	Rob Poyner (T)		Branch Director	<del>Alfred Wiehl</del> <i>Roger Goldman</i>			
Safety Officer	Matt Broyles / Eric Brown		Air Attack Supervisor	Chad Bergren			
6. Resources Assigned this Period							
	Strike Team / Task Force / Resource Designator	Leader	Number Persons	Tentative Last Work Day	Drop Off Pt / Time	Pick Up Pt / Time	
1.	E-101 SKG2 NW Diesel Dudes	John Lotze	2	7/3	<i>DEMOB TODAY</i>		
2.	E-170 DUMP Boulder Creek	Mitch Jack	1	7/12			
3.							
4.	<i>E-188 EXC3 FORD EXL</i>	<i>BILL MADSON</i>	<i>2</i>	<i>7/13</i>			
5.							
6.							
7.							
8.							
9.							
10.							
11.							
12.							
13.							
14.							
15.							
16.							
17.							
18.							
19.							
20.							
7. Control Operations <b>Task:</b> Remain ready and available for divisions as needed. <b>Purpose:</b> To assist divisions as needed to complete missions as appropriate. <b>End state:</b> Support suppression efforts as needed to project communities.							
8. Special Instructions							
9. Division / Group Communication Summary							
Function	Frequency	System	Channel	Function	Frequency	System	Channel
Command Repeater	See Comm Plan			Command	See Comm. Plan		
TAC				Air To Ground	See Comm. Plan		
Prepared by (Resource Unit Leader): Name: Gary Duranceau			Approved by (Planning Section Chief): Name: Mike Crawford			Date: 6/29/24	Time: 1900

<b>DIVISION ASSIGNMENT LIST</b>			1. Branch		2. Division / Group <b>BOAT</b>		
3. Incident Name <b>Pioneer</b>			4. Operational Period Date: <b>06/30/2024</b> Time: <b>0700-2100</b>				
5. Operations Personnel							
Operations Chief		Jon Larson / Jeff Bortner (T)		Division / Group Supervisor		Nate Crawford / Seth Ellis (T)	
Operations Chief (Plans)		Rob Poyner (T)		Branch Director			
Safety Officer		Matt Broyles / Eric Brown		Air Attack Supervisor		Chad Bergren	
6. Resources Assigned this Period							
	Strike Team / Task Force / Resource Designator		Leader	Number Persons	Tentative Last Work Day	Drop Off Pt / Time	Pick Up Pt / Time
1.	O-161 TFLD Boat Coordinator		Cameron Chambers	1	7/3	Lucerne	Lucerne
2.	O-50 TFLD		Todd Olson	1	6/30	Lucerne	Lucerne
3.	O-160 TFLD		Brian Turner	1	7/3	ICP	ICP
4.	O-248 TFLD (T)		Jason Ward	1	7/9	Lucerne	Lucerne
5.	O-263 TFLD (T)		Aaron Pedersen	1	7/12	ICP	ICP
6.	O-163 HEQB (T)		Emma Ahlrichs	1	7/3	Lucerne	Lucerne
7.							
8.	E-1 TBOT WA-NCP NPS		Sonja Shaw	1		Stehekin	Stehekin
9.	E-3 TBOT Chelan Co. F&R#7		Chris Colbert	1		Lucerne	Lucerne
10.	E-12 TBOT WA-OWF Chelan RD		Dick Gordon	1		FS Dock	FS Dock
11.	E-91 TBOT DNR Mud Puppy		Curt Hekkila	1		Lucerne	Lucerne
12.	E-98 TBOT Chelan County Sheriffs		Rich Magnussen	1		FS Dock	FS Dock
13.	E-43 TBOT Llama Boat		Gayle Thomas	1		FS Dock	FS Dock
14.	E-120 TBOT Pilgram		Justin Gavin	1	7/11	Lucerne	Lucerne
15.	E-121 TBOT Brinnon Fire		Christopher Dolan	2	7/12	Chelan	Chelan
16.							
17.	O-136 MEDIC 6		Steve Medina	1	7/8	Lucerne	Lucerne
18.	O-152 EMT 1		Ivan Huld	1	7/1	Lucerne	Lucerne
19.	O-308 EMT 4		Justin Dominguez	1	7/12	Lucerne	Lucerne
20.							
21.							
22.							
23.							
24.							
7. Control Operations							
<b>Task:</b> Contain fire spread to the southwest where terrain and fuels allow for high probability of success. Assess fire perimeter progression to the west/southwest at higher elevations.							
<b>Purpose:</b> To slow fire progression, provide time for suppression tactics, and prep around critical values.							
<b>End state:</b> Minimize fire impacts to critical values including private inholdings and Forest Service infrastructure							
8. Special Instructions							
<ul style="list-style-type: none"> <li>In large or long-term spike camps use helicopters, boats, or pack stock to deliver portable backcountry latrines and remove human waste if necessary. If camp does not have adequate pack, boat, or air support for human waste management, establish community latrines well away from water sources and common areas. Use human waste bags, if necessary.</li> <li>Ensure hazard mitigations and IWI protocols are in place before taking action.</li> </ul>							
9. Division / Group Communication Summary							
Function	Frequency	System	Channel	Function	Frequency	System	Channel
Command Repeater	See Comm Plan			Command	See Comm. Plan		
TAC				Air To Ground	See Comm. Plan		
Prepared by (Resource Unit Leader): Name: Gary Duranceau			Approved by (Planning Section Chief) Name: Mike Crawford			Date 6/29/24	Time 1900



### AIR OPERATIONS SUMMARY ICS-220

Incident Name / Number Pioneer / WA-SES-000173	Sunset 05:05	Sunset / Airport 21:02 STO	Pumpkin 21:32
General Remarks, Safety Notes, Hazards, Air Operations Special Equipment, etc.			
<p>*Order All Aircraft through Command to Helibase.                  *Sanitize Buckets before changing water sources.                  *Clear drop arealine before initiating drop sequence.                  *Be cognizant of all overhead and environmental hazards while working with Aircraft.                  *All GPS is to be collected in DMM                  *** WINDS: return to helibase if winds become unmanageable.                  *Aviation daily cost to: 2024.pioneer.finance@firenet.gov                  *Aviation daily cost to: pioneerhelibase2024@gmail.com</p>			

Time Prepared 18:00 Shutdown 21:00	Date Prepared 6/29/2024 Operational Period - Date 6/30/2024	Prepared By Matt Heckey, AOB	Operational Period - Time 0700-2100
Helibase Information		Medivac Ship Information	
Pioneer/Helibase Valley Helibase Location 47 51.96 N 120 08.513 W 119 56.56 W Pioneer HB (Chelan) Phone (971) 762-8575 Valley HB Phone (Methow) (971) 727-7255		Short Haul 125CL call Helibase to launch Make/Mod AS-350B3e Location: Chelan Request Procedure for This Aircraft: Communications on Command, Short-Haul North Casade N-125CL Order through Helibase/CWICC, CWICC (509) 884-3473 x 2 40 min to 1 hour response on to 2100	

Incident Frequencies	RX	Tone	TX	Tone	AM/FM	Position	Name	Phone	EQUIPMENT/SUPPLIES
Air to Air Primary (A-8)	123.4000		123.4000		AM	AOBD (Planning)	Mark Hocken	(641) 261-1085	Com (Chelan) Trailer E-20
Air to Air Secondary (A-9)	118.2750		118.2750		AM	AOBD (Field)	Ted Hass	(541) 646-1318	Hand Wash Station E-47
A/G PFI Tactical (A-10)	169.1500		169.1500		FM	ASGS	Dave Moore	(513) 616-9192	Water Tender E-77
A/G Sec Operational (A-11)	168.4000		168.4000		FM	ASGS-4	Ben Thayer	(208) 830-1636	Water Tender E-14
TOLC	166.6125		166.6125		FM	HEBM Pioneer	Lance Jorg	(971) 291-7443	Com (Valley) Trailer E-150
DECK	163.1000		163.1000		FM	HEBM Valley	Anika Pella	(406) 368-0938	Water Tender Valley E-158
COMMAND						ATGS	Randy McAndrew	(509) 668-7243	
						HLCO	Jerry Messinger	(541) 306-0907	
						HLCO t	Chad Bergren	(541) 219-2594	
						HLCO t	Tim Beck	(520) 238-1551	
AIR GUARD	168.6250	110.9	168.6250	110.9	FM	Short Haul NC 5CL	John Podtlewaite	(208) 830-4436	
VMED 29	155.3475	156.7	155.3475	156.7	FM	UAS	Marshall Wallace	(509) 670-6365	
						HLCO	Jamie Liienthal	(541) 529-9492	
						CWICC	Aircraft Desk	(509) 884-3473 x2	
						UAO	Cory Dolberry	(509) 668-2801	

HELICOPTERS - Assigned										
FAA #	TYPE	Make/Model	Helibase	Start	Avail	Remarks	FAA #	TYPE	Make/Mod	Alpport
HB-16FH (A-22)	1	UH-60	Valley	0800	0900	BKT/LL	H-205TK	2	Bell 205A	Chelan
HB-16TKA (A-24)	1	K-1200	Valley	0800	0900	BKT/LL				
HB-344RA (A-45)	1	CH-47D	Valley	0800	0900	BKT/LL lend/lease to				
H-527 (H-81TKA) (A-94)	1	Bell B-212HP	Chelan	0800	0900	BKT/LL ETA midday				
H-669H (A-)	2	Bell 205 A1 +	Chelan	0800	0900	BKT/LL/Recon				
H-234BH (A-99)	3	AS-350B3	Chelan	0800	0900	Recon/BKT/				
H-544AS (A-60)	3	AS-350B3	Chelan	0800	0900	HLCO/Recon				
H-407RL (A-1)	3	407	Chelan	0800	0900	Short Haul. recon.				
H-125CL	3	AS350B3e	Wenatchee	0800	0900	Short Haul, Recon				

HELICOPTERS - GACC Prepo and Lend/lease										
Call Sign	Type	Make/Model	Base	Start	Avail	Remarks	FAA #	TYPE	Make/Mod	Alpport
UR-31	3	Altix	Lucerne	0800	2200	IR/PSD	N-586DV (A-42)	610	Command	WIEN
							H-544AS (A-60)	4AS	AS350B3	Chelan
							N-197GB	617	Command/Venatched	Wenatchee

FIXED WING AA/HLCO										
Call Sign	Type	Make/Model	Base	Start	Avail	Remarks	FAA #	TYPE	Make/Mod	Alpport
							N-586DV (A-42)	610	Command	WIEN
							H-544AS (A-60)	4AS	AS350B3	Chelan
							N-197GB	617	Command/Venatched	Wenatchee

<b>1. Incident Name:</b>		<b>2. Date/Time Prepared:</b>		<b>3. Operational Period:</b>	
<b>PIONEER</b>		Date: 06/29/2024 Time: 1600		Date/Time From: 06/30/2024 0600 Date/Time To: 07/01/2024 0600	

4. Basic Radio Channel Use:										
Zone Group	Ch #	Function	Channel Name/Trunked Radio	Assignment	RX Freq	RX Tone/NAC	TX Freq	TX Tone/NAC	Mode (A,D, or M)	Remarks
	1	TACTICAL	TAC 1	DIV A & S	168.0500	123.0	168.0500	123.0	A	
	2	TACTICAL	TAC 2	DIV D	168.2000	123.0	168.2000	123.0	A	
	3	TACTICAL	TAC 3	DIV Z	168.6000	123.0	168.6000	123.0	A	
	4	TACTICAL	TAC 4	DIV H / CONT	166.7250	123.0	166.7250	123.0	A	
	5	TACTICAL	TAC 5	ROADS	166.7750	123.0	166.7750	123.0	A	
	6	TACTICAL	TAC 6	BOAT	168.2500	123.0	168.2500	123.0	A	
	7	COMMAND	CMD 7	ALL	168.4750	123.0	165.4000	123.0	A	CHELAN BUTTE
	8	COMMAND	CMD 8	ALL	169.5375	123.0	164.7125	123.0	A	OLD MAID MT
	9	COMMAND	CMD 9	ALL	170.4500	123.0	168.1000	123.0	A	MOORE MT
	10	COMMAND	CMD 10	ALL	170.0125	123.0	165.2500	123.0	A	SLIDE RIDGE
	11	COMMAND	CMD 11	ALL	170.4125	123.0	165.9625	123.0	A	FOX PEAK
	12	TACTICAL	A/G PRI	ALL DIVS	169.1500	000.0	169.1500	000.0	A	
	13	AIR TO GROUND	A/G SEC	ALL DIVS	168.4000	000.0	168.4000	000.0	A	
	14	AIR TO GROUND	A/G 3	ALL DIVS	166.6125	000.0	166.6125	000.0	A	TAKE OFF LANDING CHANNEL
	15	AIR TO GROUND	VMED 29	ALL DIVS	155.3475	156.7	155.3475	156.7	A	AIR EMS COORDINATION
	16	AIR TO GROUND	AIRGUARD	ALL DIVS	168.6250	000.0	168.6250	110.9	A	EMERGENCY AIRCRAFT CONTACT

**5. Special Instructions:** 24 hour staffing: PIONEER COMMUNICATIONS PHONE NUMBER: (208) 891-7948 / CURRENT CLONE "PIE 6-21"

<b>6. Prepared By COML</b>	Name: SETH BAUMGARTEN	Signature: <i>Seth Baumgarten</i>
ICS 205	IAP Page	Date/Time: 6/29/24 1600

<b>1. Incident Name:</b>	<b>2. Date/Time Prepared:</b>	<b>3. Operational Period:</b>
<b>PIONEER Branch IV &amp; V</b>	Date: 06/29/2024 Time: 1600	Date/Time From: 06/30/2024 0600 Date/Time To: 07/01/2024 0600

4. Basic Radio Channel Use:												
Zone Group	Ch #	Function	Channel Name/Trunked Radio	Assignment	RX Freq	RX Tone/NAC	TX Freq	TX Tone/NAC	Mode (A,D, or M)	Remarks		
	1	TACTICAL	TAC 1	DIV A & S	168.0500	123.0	168.0500	123.0	A			
	2	TACTICAL	TAC 2	DIV D	168.2000	123.0	168.2000	123.0	A			
	3	TACTICAL	TAC 3	DIV Z	168.6000	123.0	168.6000	123.0	A			
	4	TACTICAL	TAC 4	DIV H / CONT	166.7250	123.0	166.7250	123.0	A			
	5	TACTICAL	TAC 5	ROADS	166.7750	123.0	166.7750	123.0	A			
	6	TACTICAL	TAC 6	BOAT	168.2500	123.0	168.2500	123.0	A			
	7	TACTICAL	A/G PRI	ALL DIVS	169.1500	000.0	169.1500	000.0	A			
	8	AIR TO GROUND	A/G SEC	ALL DIVS	168.4000	000.0	168.4000	000.0	A			
	9	AIR TO GROUND	A/G 3	ALL DIVS	166.6125	000.0	166.6125	000.0	A			
	10	COMMAND	CMD 10	ALL	170.0125	123.0	165.2500	123.0	A	SLIDE RIDGE		
	11	COMMAND	CMD 11	ALL	170.4125	123.0	165.9625	123.0	A	FOX PEAK		
	12	COMMAND	CMD 12	ALL	170.6875	123.0	166.575	123.0	A	GOAT MOUNTAIN		
	13	LOCAL RPTR	GOAT	ALL	172.3500	146.2	165.0125	118.8	A	GOAT MOUNTAIN		
	14	LOCAL RPTR	MCLUR	ALL	172.3500	146.2	165.0125	103.5	A	McCLURE MTN		
	15	AIR TO GROUND	VMED 29	ALL DIVS	155.3475	156.7	155.3475	156.7	A	AIR EMS COORDINATION		
	16	AIR TO GROUND	AIRGUARD	ALL DIVS	168.6250	000.0	168.6250	110.9	A	EMERGENCY AIRCRAFT CONTACT		

**5. Special Instructions:** 24 hour staffing: PIONEER COMMUNICATIONS PHONE NUMBER: (208) 891-7948 / CURRENT CLONE "IV"

<b>6. Prepared By COMIL</b>	Name: SETH BAUMGARTEN
	Signature: <i>Seth Baumgarten</i>
<b>ICS 205</b>	Date/Time: 6/29/24 1600



# Safety Message

INCIDENT: Pioneer Fire      Date: 6/30/24      Safety Officers: Eric Brown & Matt Broyles

## Getting where you need to go...

- **DRIVING (for those of us who are not on Lake Chelan):** Continue to drive defensively and especially in Branch 4 due to the fact that it is not all in the closure area, a backroad motorcycle rally is in progress this weekend. Expect to come face to face with another vehicle around every turn.
- **ATV/UTV Use... Red Book Policy applies on this fire. Supervisors will be held responsible for any crewmembers not adhering to the policy. MAKE WISE DECISIONS!**
- **Slips, Trips, and Falls:** Take your time while traveling on foot. It's very easy to step in the wrong place or in the wrong way and blow out a knee, sprain an ankle, or make a one-point landing on your head. Take extra precautions on steep slopes. Be aware of your location, the time it took on foot to your location, and what resources you would need if someone gets injured out on the fireline. **Y-ALL ARE WAY OUT THERE AND GETTING THE HELP YOU NEED WILL REQUIRE TIME AND COORDINATION.**

## Create a bigger safety margin for yourself, your crew, and your adjoining resources by:

- **Taking your time:** No need to rush tasks, always come up with contingency plans.
- **Assess the situation:** Scout the work area, look for hazards, communicate them, and mitigate using sound risk management decision processes.
- **Make Good Decisions:** Use all the info you have gathered, look for blind spots in your plan, and above all else... Keep your people informed.

## INJURY, ILLNESS, AND CRITTERS

**REPORT RIGHT AWAY:** We have had 3 reports of injury or illness that were not reported in a timely matter. Realize that any medical care needing further evaluation and treatment outside of our incident will take time and coordination.

**HEAT:** Although the temperatures are not excessive the RH is up and that increases the heat index which can really affect your health. Mitigate by eating well, a 3 to 1 water to electrolyte replacement, and get good sleep.

**CRITTERS:** Snakes are frequent in the area! Ticks are nasty little bugs that can carry serious disease. Check your body parts. If a tick penetrates the skin, bag the bug and it can be sent in to MEDL for testing for Lyme disease.



Smart firefighters are hydrated firefighters!

**Stay HYDRATED!**



## HUMAN RESOURCES MESSAGE PIONEER FIRE

**June 30, 2024**

How's our attitude towards each other?

The main difference between attitude and behavior is that behavior is the reflection of one's attitude towards something or someone.

Our behavior depends on various factors, and among them, attitude plays a major role. We may have different attitudes on the same topic, which makes us different from one another, and that's ok.

With all the hard work we are doing, it is easy to get on edge and "on the edge" with each other. Let us guard against that and try to help each other out. Make the decision today to protect yourself and co-workers by keeping your attitude in check.

Take care and be safe!

Thought of the day: We have to be cautious; we can't let negativity spread like wildfire.

Margaret Dietrich - Human Resource Specialist 360-701-3154

## FINANCE MESSAGE

**Finance Email:** [2024.pioneer.finance@firenet.gov](mailto:2024.pioneer.finance@firenet.gov)

**Finance Phone:** 484-501-1835

**This incident requires electronic documentation.** Please email your time to the address above. Scanned PDF's please, no .JPG's. Feel free to call finance for help if needed. Scanners are also available at ICP.

### Required Documents

#### Overhead, Agency Crews & Cooperators

**Finance docs needed:** Resource Order, Manifest, Cooperative Agreement, Casual Hire Form w/ECI# (as applicable)

**Daily:** CTRs, Shift Tickets

**CTRs should be named as:**

CTR\_RO#\_YYMMDD-DD  
(Ex: CTR\_O235\_240605-07)

Electronic CTR available! Use QR code on front cover

#### Contract Resources

**Finance docs needed:** Resource Order, Manifest, Full Contract/Agreement, Certifications *(if required)* Pre-Inspection

**Daily:** CTRs, Shift Tickets, receipts (claims, etc.)

**NOTE: Document travel times and odometer readings**

**Shift Tickets should be named as:**

ST\_RO#\_YYMMDD-DD  
(Ex: ST\_E5\_240623-27)

Electronic shift ticket available! Use QR code on front cover

**Demob:** Signed OF-288; Signed OF-286

**Demob:** Contractor Evaluations, Shift Tickets, receipt(s) for Addition/Deductions, Post-Inspection, Signed OF-286

**"H-Pay"- Entitlement to Hazardous Pay Differential (5 CFR 550.904) - Hazard pay MUST be supported by a justification. If justification is not provided, you chance losing your entitlement.**

**Please call finance regarding issues with your time:**

No one on List today, any questions for Finance, please email us. Tomorrow we will have a phone number for Team 7 Finance Thank You.

Incident Name: **Pioneer**

Incident Number: **WA-SES-000173**

Financial codes:

WA DNR – 221-LDW

DOI – RZ79

USDA – PNRZ79 (1522)

**Please make sure you check in using QR code on the front of the IAP and then email your time daily.**

**THANK YOU!!**



## **Resource Advice**

Lead READ: Brigitte Ranne 509-663-6118, [brigitte.ranne@usda.gov](mailto:brigitte.ranne@usda.gov)  
REAF: Hector Rodriguez 509-393-5379, [Hector.Rodriguez3@usda.gov](mailto:Hector.Rodriguez3@usda.gov)  
REAF: Eireann Pederson 360-854-8197, [eireann.pederson@usda.gov](mailto:eireann.pederson@usda.gov)  
REAF: Carrissa Camenson 360-899-7147, [carissa.camenson@usda.gov](mailto:carissa.camenson@usda.gov)



Resource Guidelines

### *MIST for Spike Camp and Lucerne Forward Operating Base Management*

- Employ minimum impact suppression tactics (MIST) where feasible, especially in remote or sensitive areas.
- If spike camps are necessary, use existing, or previously impacted campsites where available. If existing campsites are not available; use your local resource advisor to help identify the most resilient sites in rocky or sandy soils. Avoid camping in wet meadows, along streams, or on lake shores.
- Store food properly so that it is not accessible to wildlife. Consider hanging food in trees at least 15 feet off the ground and 5 feet from the trunk of the tree, or store food in sealable containers. Store food away from the campsite (300 feet is ideal) to reduce the risk of human and bear (and rodent!) conflicts.
- Do not let garbage and food scraps accumulate in camp. All garbage and food scraps need to be removed from the camp ASAP and before leaving the site.
- Minimize disturbance to land in preparing bedding and campfire sites. Do not clear vegetation, trench, or excavate a flat spot to create bedding sites.
- Do not use nails in trees. Don't construct camp furniture.
- If a campfire is built for warmth in the evening, build either a pit or mound fire. Use dead and down firewood. Use small diameter wood that burns down more cleanly. Don't burn plastics or aluminum - pack it out with the rest of the camp garbage.
- In small spike camp situations (not Lucerne), individuals should use the "cat-hole" method of disposing of human waste. Toilet seats should be located a minimum of 200 feet from water sources. Holes should be dug 6-8 inches deep.
- In large or long term spike the camps use helicopters, boats, or pack stock to deliver portable backcountry latrines and remove human waste if necessary. If the camp does not have adequate pack, boat, or air support for human waste management, establish community latrines well away from water sources and common areas. Use human waste bags, if necessary

### *Dipping and Drafting*

- No cross-dipping between water bodies. All buckets or snorkels should be cleaned, inspected, and dried in the sun if they must be used between lakes. Dipping in small lakes must be pre-approved by the READ or AA.
- When drafting, use already disturbed areas for stream access (road crossings, dispersed campsites) to reduce the need for riparian vegetation clearing.
- Use screens (3/32" inch) for all pumping operations.
- Use containment pads and basins under pumps and fuel cans. Ensure a spill kit is present with every operating pump.

### *Invasive Species*

- The fire is burning within an infestation of common crupina, a WA State Class A Noxious weed. Prevent spread of crupina off site – plan to wash hose and other equipment. Request fire fighters brush boots before boarding boat or before entering National Park Service Land.
- Inspect slings and remove all plant/soil material prior to use.
- Ensure all camps, staging areas, helispots and cargo areas are free of invasive plants to prevent spread to un-infested areas.
- Weed wash all vehicles, including boats, when they arrive to the incident and when demobed.

#### *Fisheries /Aquatic Recommendations*

- If trees must be felled in riparian areas for suppression or safety reasons, fell them toward streams where possible and minimize bucking where possible.
- Non-mechanized suppression activities are recommended within Riparian Reserves (150-300 ft from stream channel). For example, consider hand lines instead of dozer lines when feasible.

#### *Retardant Use*

- Retardant avoidance areas are present in the fire suppression area for both aquatic and terrestrial species.
- Track all retardant drops – locations and amounts.
- Report all mis-applications ASAP to READ. Monitoring and reporting of misapplications is required.

#### *Wet Meadows*

- No line or other disturbance in wet meadows in the Summer Blossom area (east of South Navarre campground above and below the 8200 road) and at Coyote and Poison Springs at the headwaters of their respective creeks.

#### *Dry Meadows*

- Minimize disturbance from staging and parking areas in dry meadows. These areas recovery slowly and are vulnerable to invasive plant infestation.

#### *White Bark Pine*

- Avoid cutting white bark pine whenever possible. Needles of 5 keep it alive! Ask READ for help with ID.

#### *Burnout operations*

- Plan to protect whitebark pine of all ages and mature cold and moist forest during burnouts. READ consultation and line officer approval is required for burn plans that include these forest types.
- During burnouts modify firing to retain large trees, large snags and large down wood in forests whenever possible.
- Minimize total acres burned in burnouts.
- Incorporate typical resource protection measures used in RX burning whenever it is safe and practical to do so (such as retention of green islands in moist areas).
- Provide a map of areas that were burned as part of the burnout operation (for use in emergency consultation).
- If cultural resources are discovered during suppression activities, leave on site and notify READ.

# LOGISTICS NOTES

---

## Pioneer Fire ICP

Breakfast 0530 – 0900  
Lunch @ Refer Trailer – 0500 - 2100  
Dinner 1800 -2100  
Shower 0500 – 1200 & 1400 – 2200  
Supply 0600 – 2200  
Ground Support 0700 – 2100  
Fuel Tender 0700 – 2100  
Weed Wash 0700 – 1400 & 1600 – 2000

## FOB Lucerne

Breakfast 0600 - 0900  
Lunch – Pickup with Breakfast  
Dinner 2030 – 2130  
Shower 0500 – 1200 & 1400 – 2200  
Supply 0600 – 2200

## **Ground Support Contact Numbers:**

Casey Glade 435-704-4702      Joe Keady 541-733-6701

## **Ordering Information**

Submit all orders on General Message Form 213 to the following email address;

[2024.pioneer.ordering@firenet.gov](mailto:2024.pioneer.ordering@firenet.gov)

Ordering Manager Noe Reyes 208-416-3715

## **ICP Camping & Parking Under Maple Trees**

After assistance from Plans, READS and google, the sticky oily substance dripping from the maple trees next to Main Street was determined to be insect residue, sometimes called "Honeydew". This substance is nontoxic and doesn't damage cars if removed quickly. However, honeydew can damage car paint and reduce visibility if left on for too long. Water and a paper towel can remove it from a tent fly, so if your tent is affected wiping it off may remove the honeydew. Facilities staff took an affected vehicle to the weed wash. The windshield washer and wipers cleared the windshield easily. The weed wash successfully removed all the honeydew on other parts of the vehicle. Avoid parking or camping under the maple trees to prevent potential damage.

## **Recycling Scorecard on Incident**

Plastic Bottles	671-lbs	Aluminum Cans	192– lbs
Cardboard	8,356-lbs	Office Paper	621-lbs
Plastics 1 & 2	111-lbs	Glass	10-lbs
Batteries	123-lbs	Food Composting	7,110-lbs
Cooking Oil	187-gal	Food Donations	89-lbs
Trash	17,490-lbs	Recycling	19,407-lbs



# Example GM (ICS213) for Boat Transportation

**\*\* WHEN ARRANGING BOAT TRANSPORTATION USE THE FOLLOWING \*\***

**Nathan Crawford, DIVS, 541-219-1374, [Nathan\\_crawford@fws.gov](mailto:Nathan_crawford@fws.gov)**

**Seth Ellis, DIVS (T), 509-860-3290, [seth.ellis453@gmail.com](mailto:seth.ellis453@gmail.com)**

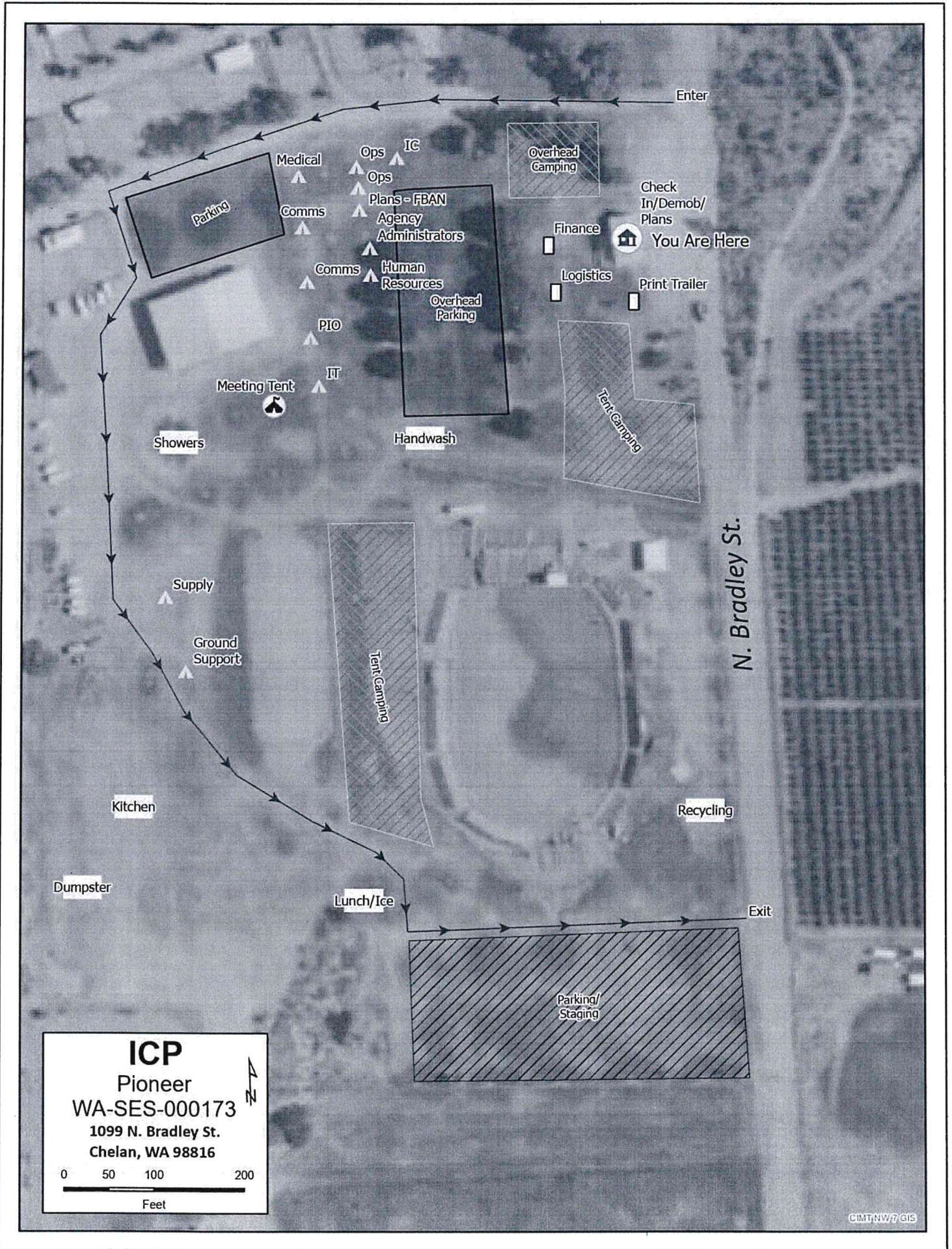
## GENERAL MESSAGE (ICS 213)

<b>1. Incident Name</b> (Optional): Pioneer Fire		
<b>2. To</b> (Name and Position): Nate Crawford DIVS/Seth Ellis- Boat DIVS(t)		
<b>3. From</b> (Name and Position):		
<b>4. Subject:</b> Ferry Tickets	<b>5. Date:</b>	<b>6. Time</b>
<b>7. Message:</b> <p style="text-align: center;">SAMPLE GENERAL MESSAGE FORM WITH REQUIRED INFORMATION</p> <p>O or C # _____</p> <p>Departure Date _____</p> <p>Ferry Ticket Departure Location (Chelan/Fields Point/Lucerne/Stehekin) _____</p> <p>Ferry Ticket Arrival Location (Chelan/Fields Point/Lucerne/Stehekin) _____</p> <p>Email address for confirmation _____</p> <p>* If unable to receive email, please note and tickets will be emailed to either your DIVS or the Boat Coordinator. *</p> <p>Phone #: _____</p> <p>FERRY TICKETS NEED TO BE SUBMITTED TO BOAT DIVS BY 1600 THE DAY PRIOR OF DESIRED DEPARTURE.</p> <p>IT IS PREFERRED FORMS ARE SUBMITTED 48 HRS PRIOR TO KNOWN AND SET LWD.</p>		
<b>8. Approved by:</b> Name: _____ Signature: _____ Position/Title: _____		
<b>9. Reply:</b>		
<b>10. Replied by:</b> Name: _____ Position/Title: _____ Signature: _____		
<b>ICS 213</b>	Date/Time: _____	

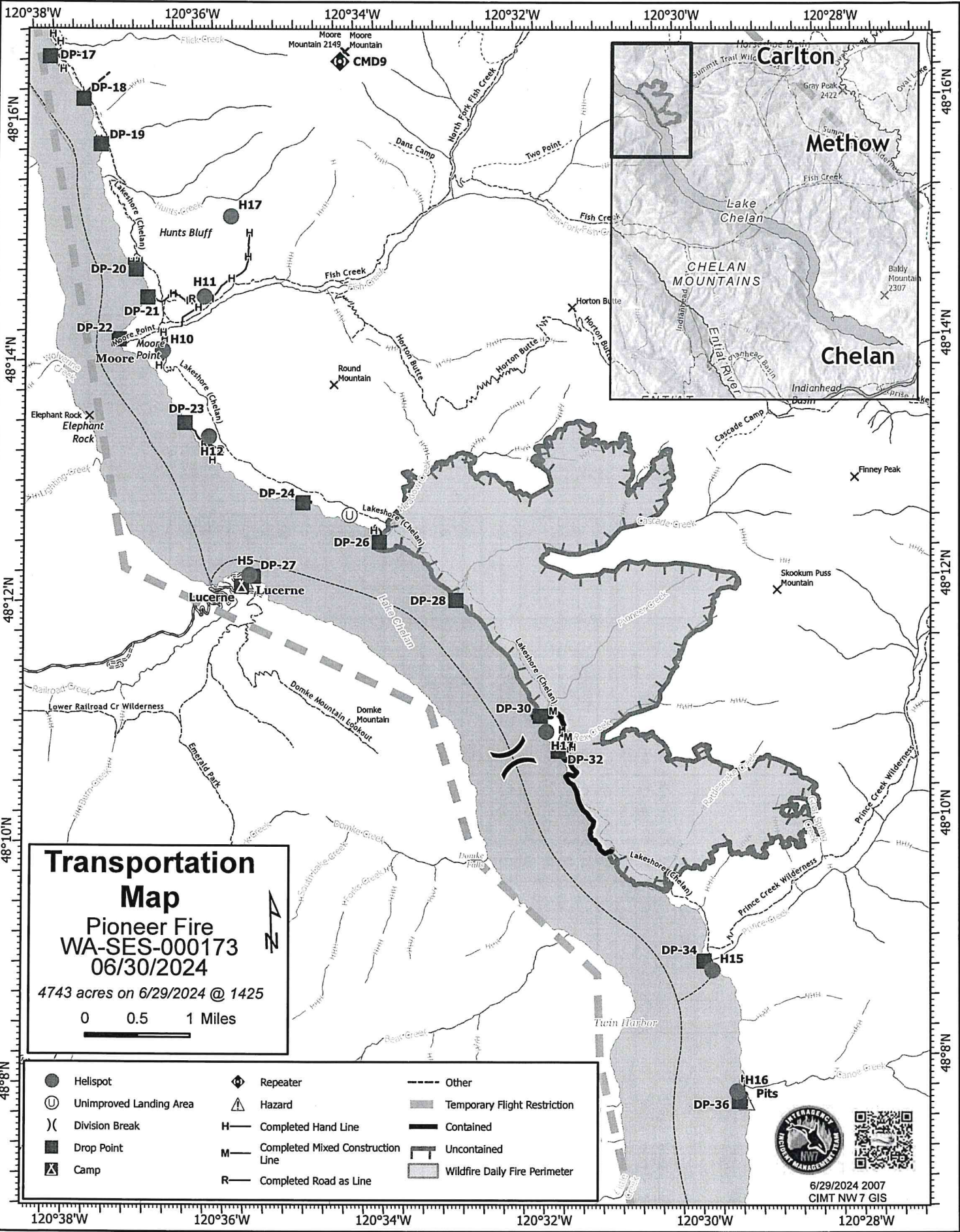
## GENERAL MESSAGE (ICS 213)

1. Incident Name and Number: PIONEER		
2. To (Name and Position): ORDERING		
3. From (Name, Position and Phone): SMOKEY BEAR, PIO 555-123-1234		
4. Subject: REQUEST	5. Date: 06/29/24	6. Time: 1300
<p>7. Message:</p> <p>WOULD LIKE TO ORDER</p> <p>1 EA SHOVEL  1 PK GENERAL MESSAGES  1 BX PAPER TOWELS  2 ROLLS STRUCTURE WRAP TAPE (This is where you need to be specific. Research the item you want and recommend possible vendors, item number, especially if this is a unique item)</p> <p>NEED BY JULY 2, 2024 @ 1400. (You need to be realistic here. Plan on about 2-3)  PLEASE DELIVER TO BLACK MOUNTAIN LOOKOUT</p> <p>**Make sure your contact info is somewhere on this form. Name, phone, or email..</p> <p>***For cache items you can expect delivery to the ICP Supply in 24 hours, or 48 if we're delivering.</p> <p>****For local purchase items we need 48-72 hours</p>		
8. Approved by: Name: _____ Signature: _____ Position/Title: _____		
9. Reply:		
10. Replied by: Name: _____ Position/Title: _____ Signature: _____		
ICS 213	Date/Time: _____	









**Transportation Map**  
**Pioneer Fire**  
**WA-SES-000173**  
**06/30/2024**  
 4743 acres on 6/29/2024 @ 1425

0 0.5 1 Miles

- |                           |                                      |                                 |
|---------------------------|--------------------------------------|---------------------------------|
| ● Hellsport               | ⬢ Repeater                           | --- Other                       |
| ⊕ Unimproved Landing Area | ⚠ Hazard                             | ▨ Temporary Flight Restriction  |
| ) ( Division Break        | H— Completed Hand Line               | ▬ Contained                     |
| ■ Drop Point              | M— Completed Mixed Construction Line | ▬ Uncontained                   |
| ⛺ Camp                    | R— Completed Road as Line            | ▨ Wildfire Daily Fire Perimeter |



6/29/2024 2007  
 CIMT NW 7 GIS



Team 7 Line Supply Order		Order #			
Date & Time	Delivery To Location/Time	Delivery Method			
Order Placed	(Division, Drop Point, Heli Spot, Lat/Long)	(Driver, Heli, DIVS to P/U)			
Order received in Communications (name & time)					
Ordered by (name and Position)					
Ground Contact					
Order received in Supply by (name & time)					
Ground Contact					
Contact Freq.					
Order received in Transportation by (name & time)					
Special Instructions/line length/ elevation					
Order received in Helibase by (name & time)					
Special Instructions/line length/ elevation					
Order shipped to line by (name & time)					
#	Item	Amount	#	Item	Amount
1	Meals #1842	MRE 12/Cs	33	Bath in a Bag, Large #0712	1000 ft.
2	Water #0048	5 gal cubies	34	Bath in a Bag, Small #0206	500 ft.
3	Gatorade	24/Cs	35	Coffee Kit #0480	500 ft.
4	Batteries, AA #0030	24/pg	36	Coffee 3lb Can	5 ea.
5	Batteries, AAA #7471	24/pg	37	Folda-Tank 1500 gal #0664	5 ea.
6	Gas Unleaded	5 gal	38	Pumpkin 3000 gal. #0568	5 ea.
7	2 Cycle Oil #7724	5 gal mix	39	Backpack Pump #0909	5 ea.
8	2 cycle Oil #3444	1 Gal mix	40	Mark III pump + Kit #0148	5 ea.
9	Diesel	5 gal	41	Lightweight Pump + Kit #8606	5 ea.
10	Bar Oil #1880	1 Gal	42	Volume Pump #1222	5 ea.
11	Bar Oil #1869	1 Qt	43	Hose 1 1/2" #1239	100' lg
12	Shovel #0171		44	Hose 1" #1238	100' lg
13	Pulaski #0146		45	Hose 3/4" #1016	50' lg
14	Mcleod #0296		46	Reducer 1 1/2" to 1" #0010	
15	Combi #1180		47	Reducer 1" to 3/4" #0733	
16	Chainsaw Kit #0340		48	Gated "y" 1 1/2" #0231	
17	Drip Torch Empty #0241		49	Gated "y" 1" #0259	
18	Fussee #0105		50	Gated "y" 3/4" #0904	
19	Sleeping Pad #1566		51	In-line Tee 1 1/2" to 1" #0230	
20	Sleeping Bag #0022		52	Nozzle KK 1 1/2" #1082	
21	Fly Tent #0070		53	Nozzle KK 1" #1081	
22	Plastic Sheeting #0143		54	Nozzle 3/4" #0136	
23	Parachute Cord #0533		55	Nozzle, Forester 1" #0024	
24	Fiber Tape #0222		56	Sprinkler kit #1048	
25	Garbage bags #0021		57		
26	Leadline 3000 lbs #0528		58		
27	Cargo Net 3000lb #0531		59	Team 7 Hose Lay Kit	
28	Swivel 3000lb #0526		60		
29	Slingable Bg 72 Gal Blivet #0426		61		
30	Foam 5 gal. #1145		62		
31	Toilet Paper #0142		63		
32			64		

Team 7 Hose Lay Kit		
Item	Amount	
1 1/2 in. synthetic hose	1000 ft.	
1 in. synthetic hose	500 ft.	
3/4 in. garden hose	500 ft.	
1 1/2 in. gated wye	5 ea.	
1 1/2 in. - 1 in. reducer	5 ea.	
1 in. combination nozzle	5 ea.	
1 in. - 3/4 in. reducer	5 ea.	
3/4 in. valve, shutoff, ball	5 ea.	
3/4 in. nozzle	5 ea.	
3/4 in. gated wye	5 ea.	

SPRINKLER KIT NFES # 1048		
Item	Amount	
Sprinkler head w/ couplings	4 ea.	
3/4 in. garden hose	250 ft.	
1 1/2 x 1 1/2 x 1 tee	4 ea.	
1 x 3/4 reducer	4 ea.	
1 1/2 in. - 1 in. reducer	1 ea.	
3/4 in. gated wye	2 ea.	
3/4 in. valve, shutoff, ball	4 ea.	
3/4 in. nozzle	1 ea.	
3/4 in. pressure regulator	4 ea.	
3/4 in. nozzle, plastic 60 GPM	1 ea.	
10 in. adjustable wrench	1 ea.	

**LINE ORDER PROCESS**

Line orders from the field should go through the Communication Unit via radio (primary) or 24-hour phone number shown on the cover of the IAP. All other supply requests should be submitted in person to the Supply Unit.



## Check In Message

- Please complete the virtual check-in process via the QR code on the front cover.
- You are not checked in until you provide the following:
  - 1) Red Cards
  - 2) Roster/Manifest
- Please email documents to: [2024.pioneer.checkin@firenet.gov](mailto:2024.pioneer.checkin@firenet.gov)

Any Questions:

Phone: 509-661-5372

Email: [2024.pioneer.checkin@firenet.gov](mailto:2024.pioneer.checkin@firenet.gov)

---

## Demob Message

- Fliers complete the "Air Travel Request" via the QR code on the front cover 72 hours prior to flight date.
- Return supplies to the Cache.
- Return radios, antennas, etc., to Communications.
- Contact Finance about closing out your paperwork.
- Once the above items have been completed, SCAN the QR code on the front cover and complete the demob questions.

Any Questions:

Phone: 509-661-5376

Email: [2024.pioneer.demob@firenet.gov](mailto:2024.pioneer.demob@firenet.gov)





# Last Work Day / Demob Report

Incident: PIONEER US-WA-SES-000173

Questions ?? - Jay at (509) 661-5376

## Demob 06/30

### CREWS

CR2I C-10 CR2I - OWF METHOW

### OVERHEAD

DIVS	O-103	LIPPERT, BENJAMIN J
DIVS	O-106	HALL, ANDREW J
HLCO	O-88	BERGREN, KENNETH C
HMGB	O-101	THAYER, BENJAMIN
PIO3	O-81	SILVIS, CARISSA
SOPL	O-74	JOHNSON, MARK E
TFLD	O-83	LEWIS, MARK R

## LWD: 06/30 ~ Demob 7/1

### OVERHEAD

DIVS	O-107	BAFFA, SILAS TAYT
HECM	O-124	BIVENS, BRANDI C
HEQB	O-115	HANSON, GARRETT GERALD
HEQB	O-116	MEYER, TYLER TODD
HEQB	O-117	FOX, IAN MASON
HRSP	O-109	DIETRICH, MARGARET VIRGINIA
SEC1	O-80	HUNT, ROBERT DALE
SEC2	O-82	KRUSE, LISA JO
SEC2	O-95	SLATINSKI, JOHN DONALD
SEC2	O-98	WIEBUSCH, COREY P
TFLD	O-50	OLSON, TODD OWEN
TFLD	O-110	CLIFTON, SHANE D
TFLD	O-111	OLSON, LARS M
THSP	O-108	MORPHIS, SETH BRYANT

## LWD: 07/01 ~ Demob 7/2

### EQUIPMENT

DZR4	E-100	DZR4 - DOUGALS LOGGING INC - C05680
ENG6	E-118	ENG6 - E561 - LITTLE PEND OREILLE
MBM2	E-103	MBM2 - MARCON TIMBER CO., INC. - 801590
MBM2	E-104	MBM2 - HAVILLAH LOGGING CO., INC. - 224435
MBM2	E-105	MBM2 - JUSTIN PITTS TRUCKING, INC. - A88471
WTS2	E-76	WTS2 - KELSI N BEAMAN - 349889

### OVERHEAD

DIVS	O-135	POYNER, ROB K
EMTF	O-137	FRANKLIN, JAMES CHRISTOPHER
EMTF	O-152	HULD, IVAN N
EMTF	O-153	NOEL, AIDAN
FELB	O-129	TENNESON, MEL
FMOD	O-126	FMOD - FALLER MODULE - FIRE CONTRACTING SERVICES
HECM	O-122	NICHOLS, LUKE ALEXANDER

# Last Work Day / Demob Report

Incident: PIONEER US-WA-SES-000173

Questions ?? - Jay at (509) 661-5376

HEQB	O-114	WHITEHALL, TJ W
MEDL	O-8.28	BROWN, JAMES JONATHAN
MEDL	O-118	MEACHAM, BENJAMIN DAVID
READ	O-125	DRAKE, CEDAR
REAF	O-280	PEDERSON, EIREANN
SOF2	O-142	JENSEN, KELLY K
SOF2	O-189	NICKEY, JOHN
TFLD	O-112	ORTLUND, DAVID R
TFLD	O-113	YOUNG, GAVIN SCOTT
THSP	O-191	SHERMAN, SHAWN



# Pioneer Fire WA-SES-000173

## C&G Contact List

Incident Commander	LeFevre	Nathan	<a href="mailto:nlefevre@blm.gov">nlefevre@blm.gov</a>	(541) 255-6595
Deputy Incident Commander	Orr	Christopher	<a href="mailto:christopher_orr@nps.gov">christopher_orr@nps.gov</a>	(530) 640-1464
Incident Commander (T)	North	Steve	<a href="mailto:snorth@mcclanefire.org">snorth@mcclanefire.org</a>	(360) 239-2069
Safety Officer	Brown	Eric	<a href="mailto:ericbrown0523@gmail.com">ericbrown0523@gmail.com</a>	(928) 699-3477
Safety Officer	Broyles	Matt	<a href="mailto:admbroyles@gmail.com">admbroyles@gmail.com</a>	(541) 591-6151
Liaison Officer	Christianson	Shawn	<a href="mailto:shawn.christianson.adm@colvilletribes.com">shawn.christianson.adm@colvilletribes.com</a>	(509) 429-3348
Liaison Officer	Suba	Mark	<a href="mailto:marksuba12@gmail.com">marksuba12@gmail.com</a>	(541) 219-9048
Liaison Officer	Brody	Greg	<a href="mailto:lmgregbrody@gmail.com">lmgregbrody@gmail.com</a>	(503) 482-8071
Liaison Officer (T)	Marchand	Rhonda	<a href="mailto:rmarchand76@yahoo.com">rmarchand76@yahoo.com</a>	(509) 634-1166
Public Information Officer	Rossbach	Cheyne	<a href="mailto:crossbac@blm.gov">crossbac@blm.gov</a>	(541) 579-0648
Finance Section Chief	Westgate	Patty	<a href="mailto:pattywestgate@gmail.com">pattywestgate@gmail.com</a>	(541) 892-8432
Finance Section Chief (T)	Bailey	Lori	<a href="mailto:lori.bailey@usda.gov">lori.bailey@usda.gov</a>	(541) 589-0806
Operations Section Chief	Larson	Jon	<a href="mailto:jon_larson@fws.gov">jon_larson@fws.gov</a>	(208) 631-6488
Operations Section Chief	Merritt	Seth	<a href="mailto:smerritt@esf-r.org">smerritt@esf-r.org</a>	(425) 501-7384
Operations Section Chief (T)	Poyner	Rob	<a href="mailto:robert.poyner@usda.gov">robert.poyner@usda.gov</a>	(425) 512-2621
Operations Section Chief	Bortner	Jefferson	<a href="mailto:jeff_bortner@nps.gov">jeff_bortner@nps.gov</a>	(360) 784-2126
Logistics Section Chief	Yager	Max	<a href="mailto:orcamax2015@gmail.com">orcamax2015@gmail.com</a>	(541) 690-6627
Logistics Section Chief	Vaughan	Franklin	<a href="mailto:franklin.vaughan@usda.gov">franklin.vaughan@usda.gov</a>	(859) 619-7244
Logistics Section Chief	Wedekind	Cindy	<a href="mailto:cwedekind59@gmail.com">cwedekind59@gmail.com</a>	(541) 450-1136
Planning Section Chief	Crawford	Michael	<a href="mailto:mcrawfor@blm.gov">mcrawfor@blm.gov</a>	(458) 212-0501
Planning Section Chief (T)	Plummer	Debbie	<a href="mailto:dplummer@blm.gov">dplummer@blm.gov</a>	(509) 991-0334





## MEDICAL PLAN (206 WF)

1. Incident/Project Name			2. Operational Period				
<b>Pioneer Fire</b>			Date/Time: <b>06/30/24 0600-2200</b>				
<b>3. Ambulance Services</b>							
Name	Complete Address	Phone	Advanced Life Support (ALS)				
			Yes	No			
Lake Chelan EMS	Chelan, WA	911	X				
Douglas/Okanagan County Fire	Brewster, WA	911		X			
Aero Methow EMS	Twisp, WA	911	X				
<b>4. Air Ambulance Services</b>							
Name	Phone/Channel	Frequency, Type of Aircraft & Capability					
Life Flight - Brewster	1-800-232-0911 911	VMED 29, Rotor, ALS, 24 hr					
Airlift NW - Wenatchee	1-800-426-2430 911	VMED 29, Rotor, ALS, 24 hr					
Medivac Ship	Command 7,8,9,10,11,12 (Linked)	VMED 29, Rotor, BLS, Daytime					
Wenatchee Short Haul- Chelan Airport	Command 7,8,9,10,11,12 (Linked)	VMED 29, Rotor, BLS, Daytime, Short Haul					
Snohawk 10 - Snohomish	1-800-258-5990 911	VMED 29, Rotor, ALS, Daytime, Hoist					
Spokane County Hoist - Spokane	1-509-532-8930 911	VMED 29, Rotor, ALS, 24 hr, Hoist Daytime Only					
<b>5. Hospitals</b>							
Name	Degrees Decimal Minutes	Travel Time From Fire		Phone	Helipad		Level of Care
		Air	Boat		Yes	No	
Lake Chelan Health 110 S. Apple Blossom Drive Chelan WA	Lat: 47° 50' 20 N	30 Min	3 Hr	509-683-2474		X	Level IV Trauma
	Long: 119° 59' 20 W						
Central Washington Hospital 1201 S. Miller Wenatchee WA	Lat: 47° 24. 43 N	1 Hr	4 Hr	509-433-3115	X		Level III Trauma
	Long: 120° 19. 28 W						
Harborview Medical Center 325 9 <sup>th</sup> Ave Seattle WA	Lat: 47° 36. 24 N	1.5 Hr	6 Hr	206-744-4025	X		Level I Trauma Burn Center
	Long: 122° 19. 45 W						
<b>ICP</b>	<b>EMS Responders &amp; Capability:</b>		James Brown MEDL/Paramedic 360-775-5413		Mariann Turley MEDL/AEMT 509-496-9370		
	Equipment Available on Scene:		ALS Kit, AED, O2, OTC meds				
	Medical Emergency Channel:		Command 7, 8, 9, 10, 11 (Linked)				
	ETA for Ambulance to Scene:						
	Air:		NA				
	Ground:		15 Min				
	Approved Heli-Spot:		NA				
	Lat:		NA				
Long:		NA					
<b>LUCERNE FOB</b>	<b>EMS Responders &amp; Capability:</b>		Ben Meacham MEDL/EMTF (Lucerne FOB) 360-921-3817		Londa Van Kirk MEDL/EMTF (Lucerne FOB) 360-815-7645		
			MEDIC 6 Steve Medina (Boat Medical) 360-556-9568		EMT 1 Ivan Huld (Boat Medical) 360-888-9880		
			EMT 4 Justin Dominguez (Boat Medical) 509-741-0611				
	Equipment Available on Scene:		ALS Kit, AED, O2, OTC meds				
	Medical Emergency Channel:		Command 7, 8, 9, 10, 11 (Linked)				
	ETA for Ambulance to Scene:						
	Air:		2 hr				
	Water/Ground:		3 hr				
Approved Heli-Spot:							
Lat:		<b>H5 48° 12.1624' N</b>					
Long:		<b>120° 35.4476' W</b>					
<b>BRANCH I</b>	<b>EMS Responders &amp; Capability:</b>		MEDIC 1 Remington Becker (DIV Z) 360-903-8612		MEDIC 8 Rick Kelly (DIV Z) 509-290-3922		
			MEDIC 3 Adam Lathrop (DIV A) 425-531-0469		EMT 2 Aidan Noel (DIV A) 206-458-0103		
			EMT 3 James Franklin (DIV A) 253-312-1374				
	Equipment Available on Scene:		ALS Kit, Monitor/Defib, O2				
	Medical Emergency Channel:		Command 7, 8, 9,10, 11 (Linked)				
	ETA for Ambulance to Scene:						
	Air:		2 hr				
	Water/Ground:		3 hr				
	Approved Heli-Spots:						
	H1 48° 10.813' N 120° 31.925' W		H11 48° 14.492' N 120° 35.922' W		H15 48° 08.754' N 120° 29.813' W		
H10 48° 14.099' N 120° 36.782' W		H12 48° 13.381' N 120° 35.919' W		H16 48° 07.744' N 120° 29.541' W			
Lat:		NA					
Long:		NA					

## MEDICAL PLAN (206 WF)

<b>BRANCH II</b>	<b>EMS Responders &amp; Capability:</b>	REMS 2 Brayden Kirk + 3 (DIV D) 509-264-8203 Kevin Smith MEDL/EMPF (Stehekin FOB) 509-710-0239
	Equipment Available on Scene:	
	Medical Emergency Channel:	Command 7, 8, 9, 10, 11 (Linked)
	ETA for Ambulance to Scene:	
	Air:	2 hr
	Ground:	3 hr
	Approved Heli-Spot:	NA
	Lat:	NA
Long:	NA	
<b>BRANCH IV</b>	<b>EMS Responders &amp; Capability:</b>	Unstaffed with medical Contingency medical resources can assist
	Equipment Available on Scene:	
	Medical Emergency Channel:	Command 7, 8, 9, 10, 11, 12 (Linked)
	ETA for Ambulance to Scene:	
	Air:	2 hr
	Ground:	3 hr
	Approved Heli-Spot:	NA
	Lat:	NA
Long:	NA	
<b>BRANCH V</b>	<b>EMS Responders &amp; Capability:</b>	MEDIC 5 Brian Linacre (CONTINGENCY) 301-781-7990 MEDIC 7 Steve Drab (CONTINGENCY) 406-600-2059 MEDIC 2 Joel Bower (DIV S) 360-461-7390 REMS 1 Ray Storm + 4 (DIV S) 415 637-0491
	Equipment Available on Scene:	ALS Kit, Monitor/Defib, O2, Rescue Gear
	Medical Emergency Channel:	Command 7, 8, 9, 10, 11, 12 (Linked)
	ETA for Ambulance to Scene:	
	Air:	2 hr
	Ground:	3 hr
	Approved Heli-Spot:	
	Lat:	H25 47° 59.200' N
Long:	120° 16. 521' W	
<b>TBD</b>	<b>EMS Responders &amp; Capability:</b>	TBD
	Equipment Available on Scene:	
	Medical Emergency Channel:	Command 7,8,9,10,11 (Linked)
	ETA for Ambulance to Scene:	
	Air:	
	Ground:	
	Approved Heli-Spot:	NA
	Lat:	NA
Long:	NA	
<b>TBD</b>	<b>EMS Responders &amp; Capability:</b>	TBD
	Equipment Available on Scene:	
	Medical Emergency Channel:	Command 7,8,9,10,11 (Linked)
	ETA for Ambulance to Scene:	
	Air:	
	Ground:	
	Approved Heli-Spot:	NA
	Lat:	NA
Long:	NA	

Prepared By (Medical Unit Leader)	Date	Reviewed By (Safety Officer)	Date
Mariann Turley MEDL	06/29/24	Matt Broyles SOFC	06/29/24
Signature: <i>Mariann Turley</i>		Signature: <i>Matt Broyles</i>	



**Medical Incident Report**

**FOR A NON-EMERGENCY INCIDENT, WORK THROUGH CHAIN OF COMMAND TO REPORT AND TRANSPORT INJURED PERSONNEL AS NECESSARY.**

**FOR A MEDICAL EMERGENCY: IDENTIFY ON SCENE INCIDENT COMMANDER BY NAME AND POSITION AND ANNOUNCE "MEDICAL EMERGENCY" TO INITIATE RESPONSE FROM IMT COMMUNICATIONS/DISPATCH.**

**Use the following items to communicate situation to communications/dispatch.**

**1. CONTACT COMMUNICATIONS / DISPATCH (Verify correct frequency prior to starting report)**

*Ex: "Communications, Div. Alpha. Stand-by for Emergency Traffic."*

**2. INCIDENT STATUS: Provide incident summary (including number of patients) and command structure.**

*Ex: "Communications, I have a Red priority patient, unconscious, struck by a falling tree. Requesting air ambulance to Forest Road 1 at (Lat./Long.) This will be the Trout Meadow Medical, IC is TFLD Jones. EMT Smith is providing medical care."*

Severity of Emergency / Transport Priority	<input type="checkbox"/> <b>RED / PRIORITY 1 Life or limb threatening injury or illness. Evacuation need is IMMEDIATE</b> <i>Ex: Unconscious, difficulty breathing, bleeding severely, 2° – 3° burns more than 4 palm sizes, heat stroke, disoriented.</i> <input type="checkbox"/> <b>YELLOW / PRIORITY 2 Serious Injury or illness. Evacuation may be DELAYED if necessary.</b> <i>Ex: Significant trauma, unable to walk, 2° – 3° burns not more than 1-3 palm sizes.</i> <input type="checkbox"/> <b>GREEN / PRIORITY 3 Minor Injury or illness. Non-Emergency transport</b> <i>Ex: Sprains, strains, minor heat-related illness.</i>
Nature of Injury or Illness & Mechanism of Injury	Brief Summary of Injury or Illness <i>(Ex: Unconscious, Struck by Falling Tree)</i>
Transport Request	<i>Air Ambulance / Short Haul/Hoist Ground Ambulance / Other</i>
Patient Location	<i>Descriptive Location &amp; Lat. / Long. (WGS84)</i>
Incident Name	<i>Geographic Name + "Medical" (Ex: Trout Meadow Medical)</i>
On-Scene Incident Commander	<i>Name of on-scene IC of Incident within an Incident (Ex: TFLD Jones)</i>
Patient Care	<i>Name of Care Provider (Ex: EMT Smith)</i>

**3. INITIAL PATIENT ASSESSMENT: Complete this section for each patient as applicable (start with the most severe patient)**

Patient Assessment: See IRPG page 106

Treatment:

**4. TRANSPORT PLAN:**

Evacuation Location *(if different): (Descriptive Location (drop point, intersection, etc.) or Lat. / Long.)* Patient's ETA to Evacuation Location:

Helispot / Extraction Site Size and Hazards:

**5. ADDITIONAL RESOURCES / EQUIPMENT NEEDS:**

*Example: Paramedic/EMT, Crews, Immobilization Devices, AED, Oxygen, Trauma Bag, IV/Fluid(s), Splints, Rope rescue, Wheeled litter, HAZMAT, Extrication*

**6. COMMUNICATIONS: Identify State Air/Ground EMS Frequencies and Hospital Contacts as applicable**

Function	Channel Name/Number	Receive (RX)	Tone/NAC *	Transmit (TX)	Tone/NAC *
COMMAND					
AIR-TO-GRND					
TACTICAL					

**7. CONTINGENCY: Considerations: If primary options fail, what actions can be implemented in conjunction with primary evacuation method? Be thinking ahead.**

**8. ADDITIONAL INFORMATION: Updates/Changes, etc.**

**REMEMBER: Confirm ETA's of resources ordered. Act according to your level of training. Be Alert. Keep Calm. Think Clearly. Act Decisively.**