



ORGANIZATION ASSIGNMENT LIST	
1. Incident Name <b>PIONEER</b>	
2. Date Prepared <b>JULY 1, 2024</b>	3. Time Prepared <b>1800</b>
4. Operational Period <b>JULY 2, 2024 0700 – 2100</b>	
5. Incident Commander and Staff	
Position	Name
Incident Commander	Nate LeFevre
Incident Commander (T)	Steve North
Deputy	Chris Orr
Safety Officer	Matt Broyles / Eric Brown
Information Officer	Cheyne Rossbach
Liaison	Shawn Christianson / Greg Brody (Stehekin) / Mark Suba / Rhonda Marchand (T)
Human Resources	Margaret Dietrich
6. Agency Representatives	
Agency	Name
USFS Oka/Wen Agency Admin	Chris Furr
USFS Oka/Wen Agency Admin (T)	Paul Willard
DNR Agency Administrator	Larry Leach
DNR Deputy Agency Administrator	Wyatt Leighton
NPS Agency Administrator	Don Striker
NPS Agency Representative	Denise Shultz
READ Liaison	Courtney Rowe
7. Planning Section	
Plans Section Chief	Mike Crawford
Deputy	Debbie Plummer (T)
Resource Unit	Gary Duranceau/ Cari Richardson
Status Check-in	Katelyn Roeder/ Charlie Hardy
Situation Unit	Shannon Theall / Ray Moeckel (T)
GIS Specialists	Aleksandar Dozic / Olivia Hughes (T)
Demob Unit	Jay Lord
Documentation Unit	Chris Oelschlager
Incident Meteorologist	Todd Carter/Maddie Kristell (T)
Fire Behavior Analyst	Steve Ziel / Michael Bowden
Long Term Fire Analyst	Brett Smith (T) (Virtual)
8. Logistics Section	
Logistics Section Chief	Franklin Vaughan / Larry Falcon (T)
Deputy	Max Yager (Stehekin) / Cindy Wedekind (Lucerne)
Facilities	Jan Robbins / Kelsy Lipp / Peter Drott (T) / Mike Prevost (T) / Randy Rector (T)
Base Camp Manager	Dave Lefevre/Mac McEntyre(T)
Supply Unit	Vicki Cunningham

IT Specialist	Mike Gascon / Chad Funnemark / Ben Smith (T)
Receiving Distribution	Michael Hanson / Karl Peterson (T) / David Richards (Stehekin) / Martin Eversaul (Lucerne)
Ordering Manager	Noe Reyes / Kerry Johnston
Ground Support Unit	Casey Glade / Joe Keady
Communication Unit	Seth Baumgarten / Michael Merrick (T)
Communication Tech.	Keith Schaff / Kevin Judd
Food Unit	Kristy Naughton / John Cody/Phil Moller/Shawna Monroe (T)
Security Manager	Michael Fakier
Medical Unit	Mariann Turley / Cass Monroe (T) / Kevin Smith (T) (Stehekin) / Londa Van Kirk
9. Operations Section	
OPS Section Chief - Lead	Jon Larson / Jeff Bortner (T)
OPS Section Chief - Planning	
OPS Section Chief – Field	Seth Merritt
a. Branch I	
Branch Director	Thom Taylor/ Josh Verellen (T)
Division A	Seth Missal / James Fields (T)
Division Z	Travis Baker/Frank Heilman (T)
b. Branch II	
Branch Director	Thom Taylor/ Josh Verellen (T)
Division D	Aaron Merritt
c. Branch IV	
Branch Director	Roger Goldman
Division H	Matt Ziegler / Steve Abrams (T)
d. Branch V	
Branch Director	Roger Goldman
Division S	Linda Gibson
Division Contingency / Roads	Jennifer Harris/Eric Metzger (T)
Division Staging	Jon Merager
Division Boat	Nate Crawford / Seth Ellis (T)
e. Air Operations Branch	
AOB Director – Planning	Mark Hocken
AOB Director – Field	Ted Hass
HELCO ATGS	Jamie Lilienthal
10. Finance Section	
Finance Section Chief	Andrea Andresen / Patty Westgate / Lori Bailey (T)
Time Unit	Beverly Hollars
Procurement	Audrey Mainwaring
Comp/Claims	Kelly Lorenz (Virtual)
Cost Unit	Dede Domingos (Virtual)
Prepared by Cari Richardson, RESL	



## Fire Behavior Forecast # 21

<b>Name of Incident:</b> Pioneer	<b>Administrative Unit:</b> SE Region DNR / Okanogan-Wenatchee NF
<b>Date &amp; Time Issued:</b> July 1, 2024 @ 1900	<b>Operational Period:</b> DAY 07/02/2024
<b>FBAN:</b> Michael Bowden	<b>Signed:</b> /z/

**Assumptions:** *Expect a progressive warming and drying trend that should result in increased fire behavior in the coming days. Current fuel conditions will support limited fire spread. Fire behavior is being inhibited by early season fuel conditions and discontinuity of the fuel bed. Expect limited (low) burning conditions in exposed fine fuels between 1300-1700. Persistent burning and heat retention in heavy fuels will serve as ignition sources as drying occurs. Live fuels are not contributing to fire spread at this time. Lake effect winds (up or down lake) dominate lower and mid slopes; the fire areas are on a S/SW aspect with steep side drainages that provide upslope winds. Wind/slope alignment and/or lake wind will influence drying rate and fire spread. Expect down lake gusty winds, with gusts to 30 mph on ridgetops.*

### Weather Summary

\*See attached Fire Weather Forecast

### Fire Behavior Summary

**Fuels in the fire area** are composed of a mosaic of *Timber Litter, Grass, Timber with Understory, and Grass/Shrub* models. The fire is burning in the Rex Creek (2001) fire footprint. Primary tree species include mixed sizes and densities of Douglas Fir and Ponderosa Pine. Local timber litter is compact to fluffy. Brush and understory species include ceanothus, hardwoods, and dog-hair conifer reproduction. Large snags and heavy downed fuel loadings are common throughout all areas. Live woody and herbaceous fuels are seasonally moist, and not contributing to rates of spread; grasses are partially to fully cured depending on elevation and aspect. Fuel conditions change by aspect, previous fire history, and soil moisture. Low crown base height (ladder fuels) is present in most of the timbered areas.

*Today's **Maximum** potential fire behavior will include isolated pockets/areas of smoldering, creeping, and limited spread with wind/slope alignment. Primary spread mechanism has been backing with rollout, flanking, and limited head fire spread. Heavy fuels retain heat and will serve as ignition sources as fine fuels dry becoming available to burn. Early season fuel condition is inhibiting full fire behavior potential – live fuels are moist; some grasses are still curing.*

\* **FFM= 7%-9%, 1000hr. moisture=12%, Woody fuels 170%, Probability of Ignition-40-50%, Max Spotting < 0.2**

Fuel Type	Rate of Spread	Flame Length	Backing ROS	35 MPH Gust – Ridgetop
... If your work area includes -	(CH/HR = FPM)	Feet	FPM	FPM
GR2 - Moderate load grass/shrub	<2 - 3	<2	< 1	2 - 3
SH2 – Moderate load shrub	<1 - 2	< 2	< 1	5-7
TU5 - High load Timber w/ Understory	<8 - 9	< 6-7	< 1	20-25
TL8 – Long needle timber litter	<8 - 9	<3-4	< 1	20-25

### Specific Assignments:

**Div. A** – Expect smoldering, backing, and limited flanking in upper Meadow Cr./ Cascade Cr. Heavy fuels will continue to consume.

**Div. Z** –Ragged fire edge on north side of Prince Cr will smolder, flank, and back with rollout. No Name creek may show flames.

**Other Divisions** – Should not be affected by fire activity during the burn period. Monitor smoke direction and amount. Assess fuels.

\***IA** – Ensure good size-up before engaging. Assess fire spread potential based on fuel, weather, topography and values at risk.

**Air Operations:** Monitor W-NW ridge top wind gusting to 30 mph.

### Safety

**The fire ground is very steep. Assess the topography hazards before engaging. Fuels that have been consumed leave hot ash pits. Fire weakened snags and trees are not to be trusted..... always maintain situational awareness of your surroundings. Be sure you have lookouts that can detect and communicate changes.**

<b>DIVISION ASSIGNMENT LIST</b>		1. Branch <b>I</b>	2. Division / Group <b>Z</b>				
3. Incident Name <b>Pioneer</b>		4. Operational Period Date: <b>07/02/2024</b> Time: <b>0700-2100</b>					
5. Operations Personnel							
Operations Chief	Jon Larson / Jeff Bortner (T)		Division / Group Supervisor	Travis Baker / Frank Heilman (T)			
Operations Chief (Plans)			Branch Director	Thom Taylor / Josh Verellen (T)			
Safety Officer	Matt Broyles / Eric Brown		Air Attack Supervisor	Jamie Lilienthal			
6. Resources Assigned this Period							
	Strike Team / Task Force / Resource Designator	Leader	Number Persons	Tentative Last Work Day	Drop Off Pt / Time	Pick Up Pt / Time	
1.	<b>O-182 WFM1 Selway</b>	<b>JT Sohr</b>	<b>14</b>	<b>7/8</b>	<b>DP-34</b>	<b>DP-34</b>	
2.							
3.	<b>A-78 UR-31</b>	<b>Marshal Wallace</b>	<b>4</b>	<b>7/9</b>	<b>DP-34</b>	<b>DP-34</b>	
4.							
5.	<b>O-51 MEDIC 1</b>	<b>Remington Becker</b>	<b>1</b>	<b>7/2</b>	<b>DP-34</b>	<b>DP-34</b>	
6.	<b>O-307 MEDIC 8</b>	<b>Rick Kelly</b>	<b>1</b>	<b>7/11</b>	<b>DP-34</b>	<b>DP-34</b>	
7.							
8.	<b>O-174.52 SOFR</b>	<b>George Libercajt</b>	<b>1</b>	<b>7/7</b>	<b>DP-27 / Lucerne</b>	<b>DP-27 / Lucerne</b>	
9.							
10.	<b>O-162 HEQB</b>	<b>Nick Glatt</b>	<b>1</b>	<b>7/2</b>	<b>ICP</b>	<b>ICP</b>	
11.							
12.							
13.							
14.							
15.							
16.							
17.							
18.							
19.							
20.							
21.							
22.							
7. Control Operations <b>Task:</b> Contain fire spread to the southeast where terrain and fuels allow for high probability of success. Assess fire perimeter progression to the east/southeast at higher elevations. <b>Purpose:</b> To slow fire progression, provide time for suppression tactics, and continue to prep around critical values. <b>End state:</b> Minimize fire impacts to critical values including private inholdings and Forest Service infrastructure							
8. Special Instructions <ul style="list-style-type: none"> <li>In large or long term spike camps use helicopters, boats, or pack stock to deliver portable backcountry latrines and remove human waste if necessary. If camp does not have adequate pack, boat, or air support for human waste management, establish community latrines well away from water sources and common areas. Use human waste bags, if necessary.</li> <li>Ensure hazard mitigations and IWI protocols are in place before taking action.</li> <li>Hose used from Prince Creek to Moore Pt: contaminated with invasive plants. Do not reuse. Backhaul to Moore Pt DP22 and store in "infested hose" area at Moore Pt until decontaminated.</li> </ul>							
9. Division / Group Communication Summary							
Function	Frequency	System	Channel	Function	Frequency	System	Channel
Command Repeater	See Comm Plan			Command	See Comm. Plan		
TAC				Air To Ground	See Comm. Plan		
Prepared by (Resource Unit Leader): Gary Duranceau			Approved by (Planning Section Chief): Mike Crawford		Date: 7/1/24	Time: 1900	



<b>DIVISION ASSIGNMENT LIST</b>		1. Branch <b>II</b>	2. Division / Group <b>D</b>	<b>Page 2 of 2</b>			
3. Incident Name <b>Pioneer</b>		4. Operational Period Date: <b>07/02/2024</b> Time: <b>0700-2100</b>					
5. Operations Personnel							
Operations Chief	Jon Larson / Jeff Bortner (T)		Division / Group Supervisor	Aaron Merritt			
Operations Chief (Plans)			Branch Director	Thom Taylor / Josh Verellen (T)			
Safety Officer	Matt Broyles / Eric Brown		Air Attack Supervisor	Jamie Lilienthal			
6. Resources Assigned this Period							
	Strike Team / Task Force / Resource Designator	Leader	Number Persons	Tentative Last Work Day	Drop Off Pt / Time	Pick Up Pt / Time	
21.	<b>O-165 REMS 2</b>	<b>Brayden Kirk</b>	<b>4</b>	<b>7/10</b>	<b>Stehekin</b>	<b>Stehekin</b>	
22.	<b>O-174.79 MEDL (T)</b>	<b>Kevin Smith</b>	<b>1</b>	<b>7/2</b>	<b>Stehekin</b>	<b>Stehekin</b>	
23.							
24.	<b>O-174.88 SOFR</b>	<b>Leo Engleson</b>	<b>1</b>	<b>7/7</b>	<b>Stehekin</b>	<b>Stehekin</b>	
25.							
26.	<b>E-119 Driver</b>	<b>Stephen Bouche</b>	<b>1</b>	<b>7/3</b>	<b>Stehekin</b>	<b>Stehekin</b>	
27.							
28.							
29.							
30.							
31.							
32.							
33.							
34.							
35.							
36.							
37.							
38.							
39.							
7. Control Operations <b>Task:</b> Continue construction of contingency lines around the community of Stehekin. <b>Purpose:</b> Minimize fire impacts to critical values including private inholdings, the community of Stehekin, and Forest Service infrastructure. <b>End state:</b> Critical values including private inholdings, the community of Stehekin, and Forest Service infrastructure are not impacted by the Pioneer fire, while minimizing fire impacts and acres burned utilizing historic wildfire control features and natural barriers.							
8. Special Instructions							
<ul style="list-style-type: none"> <li>In large or long term spike camps use helicopters, boats, or pack stock to deliver portable backcountry latrines and remove human waste if necessary. If camp does not have adequate pack, boat, or air support for human waste management, establish community latrines well away from water sources and common areas. Use human waste bags, if necessary.</li> <li>All operational personnel working on USFS lands will need to conduct a thorough inspection for invasive species seeds on boots including laces, clothing, and gear prior to entering NPS lands.</li> <li>Only fresh (direct from the cache) hose should be utilized on NPS lands to prevent the transport of invasive species seeds.</li> <li>Hose used on USFS lands should not be used on NPS lands and hose used on NPS lands should not be used on USFS lands to prevent the spread of invasives species seeds.</li> <li>Cargo loads being transported onto NPS lands should be inspected for invasive weed seed prior to flight.</li> <li>Ensure hazard mitigations and IWI protocols are in place before taking action.</li> <li>NPS Resource Avoidance Area Flagging is yellow with red polka dots. Contact NPS READs before working in areas where this flagging is present.</li> <li>** Denotes available for Initial Attack.</li> </ul>							
9. Division / Group Communication Summary							
Function	Frequency	System	Channel	Function	Frequency	System	Channel
Command Repeater	See Comm Plan			Command	See Comm. Plan		
TAC				Air To Ground	See Comm. Plan		
Prepared by (Resource Unit Leader): Gary Duranceau			Approved by (Planning Section Chief): Mike Crawford			Date 7/1/24	Time 1900

<b>DIVISION ASSIGNMENT LIST</b>			1. Branch <b>V</b>		2. Division / Group <b>S</b>		
3. Incident Name <b>Pioneer</b>			4. Operational Period Date: <b>07/02/2024</b> Time: <b>0700-2100</b>				
5. Operations Personnel							
Operations Chief		Jon Larson / Jeff Bortner (T)		Division / Group Supervisor		Linda Gibson	
Operations Chief (Plans)				Branch Director		Roger Goldman	
Safety Officer		Matt Broyles / Eric Brown		Air Attack Supervisor		Jamie Lilienthal	
6. Resources Assigned this Period							
	Strike Team / Task Force / Resource Designator	Leader	Number Persons	Tentative Last Work Day	Drop Off Pt / Time	Pick Up Pt / Time	
1.	O-178 TFLD	Andrew Schaffran	1	7/9	ICP	ICP	
2.	O-179 TFLD	Charlie Humbert	1	7/9			
3.	**O-249 TFLD (T)	Mark Harper	1	7/9	ICP	ICP	
4.							
5.	**C-18 CR2I Colville	Jacob Morse	21	7/6	Camp 4 Spike	Camp 4 Spike	
6.	C-26 CRW1 Baker River		21	7/11			
7.							
8.	E-73 WTS1 Strand Tenders	Wade Strand	1	7/11	Camp 4 Spike	Camp 4 Spike	
9.	E-74 WTS2 MVP Team	Dale Conrad	1	7/12	ICP	ICP	
10.	E-75 WTS2 David Rains	David Rains	1	7/16	ICP	ICP	
11.	E-78 WTS2 King Hydroseeding	Don Warden	1	7/10	Camp 4 Spike	Camp 4 Spike	
12.	E-156 WTS2 King Hydroseeding	Wes Bodenhamer	1	7/8	ICP	ICP	
13.							
14.	O-43 REMS1	Ray Storm	5	7/9	Camp 4 Spike	Camp 4 Spike	
15.	O-68 MEDIC 2	Joel Bower	1	7/3	ICP	ICP	
16.							
17.	O-141 SOFR	Kevin Pfister	1	7/2	Camp 4 Spike	Camp 4 Spike	
18.	O-345 SOF2	Todd Mott	1	7/14	Camp 4 Spike	Camp 4 Spike	
19.							
20.	E-18, E-93, E-94, E-148, E-149 UTV						
21.							
22.	E-193 ENG5	CONNOR RUPERT	4	7/15			
23.	TBD:						
24.	(1)ENG6						
25.	(1)CR2I						
7. Control Operations <b>Task:</b> Implementation of control from South Navaree CG to Lake Chelan. Increase ingress and egress to the fire area. <b>Purpose:</b> To establish a barrier to fire to the east of Safety Harbor Creek. <b>End state:</b> Control line anchored from South Navaree CG to Lake Chelan.							
8. Special Instructions <ul style="list-style-type: none"> <li>Ensure hazard mitigations and IWI protocols are in place before taking action.</li> <li>** Denotes available for Initial Attack</li> </ul>							
9. Division / Group Communication Summary							
Function	Frequency	System	Channel	Function	Frequency	System	Channel
Command Repeater	See Comm Plan			Command	See Comm. Plan		
TAC				Air To Ground	See Comm. Plan		
Prepared by (Resource Unit Leader): Gary Duranceau			Approved by (Planning Section Chief): Mike Crawford			Date 7/1/24	Time 1900



<b>DIVISION ASSIGNMENT LIST</b>		1. Branch <b>V</b>	2. Division / Group <b>Contingency/Roads</b>				<b>Page 2 of 2</b>	
3. Incident Name <b>Pioneer</b>		4. Operational Period Date: <b>07/02/2024</b> Time: <b>0700-2100</b>						
5. Operations Personnel								
Operations Chief	Jon Larson / Jeff Bortner (T)		Division / Group Supervisor		Jennifer Harris / Eric Metzger (T)			
Operations Chief (Plans)			Branch Director		Roger Goldman			
Safety Officer	Matt Broyles / Eric Brown		Air Attack Supervisor		Jamie Lilienthal			
6. Resources Assigned this Period								
	Strike Team / Task Force / Resource Designator	Leader	Number Persons	Tentative Last Work Day	Drop Off Pt / Time	Pick Up Pt / Time		
25.	E-154 SKG2 Western	Rick Lauman	2	7/8	ICP	ICP		
26.	E-155 SKG2 Mountain View	Shawn Beaman	2	7/8	ICP	ICP		
27.								
28.	E-92 DZR3 Batchelor Excavation	Jay Batchelder	2	7/14	ICP	ICP		
29.	E-100 DZR4 Douglas Logging	Al Steele	2	7/16	ICP	ICP		
30.	E-143 EXC2 Delange Enterprise	Pete Delange	2	7/5	ICP	ICP		
31.	E-71 GRD2 Pettet	Mark Rowe	2	7/4	ICP	ICP		
32.	E-72 GRD2 Scotts Excavating	Wyatt Radke	2	7/13	ICP	ICP		
33.	E-69 FTRA Morris Forestry	Rudy Morris	1	7/14	ICP	ICP		
34.	E-151 MBM2 Dukes	Chris Boles	2	7/8	ICP	ICP		
35.	E-152 MBM2 Axisus	John Cisneros	2	7/10	ICP	ICP		
36.								
37.	O-76 MEDIC 5	Brian Linacre	1	7/7				
38.	O-271 MEDIC 7	Steve Drab	1	7/11	ICP	ICP		
39.								
40.	O-346 SOFR	David Zuares	1	7/14	ICP	ICP		
41.								
42.	E-19 UTV				ICP	ICP		
43.	E-44 UTV				ICP	ICP		
44.	E-191 ENG3	BRANDON MARSH	3	7/15				
45.	E-192 ENGS	SETH REYNOLDS	4	7/15				
46.	TBD:							
47.	(1)ENG6							
48.	(1)ENG3							
7. Control Operations								
<b>Task:</b> Implement control lines from H41 to DP76. Continue road maintenance on 4330 and 4010.								
<b>Purpose:</b> To protect critical values at risk.								
<b>End state:</b> To have established control lines in place that correspond to Pioneer Fire strategic plan.								
<ul style="list-style-type: none"> <li>• Special Instructions</li> <li>• Ensure hazard mitigations and IWI protocols are in place before taking action.</li> <li>• Contingency resources working DIV H: Draft sites must be reviewed by READ.</li> <li>• Work with READS to maintain resource protection.</li> <li>• ** Denotes available for Initial Attack</li> </ul>								
8. Division / Group Communication Summary								
Function	Frequency	System	Channel	Function	Frequency	System	Channel	
Command Repeater	See Comm Plan			Command	See Comm. Plan			
TAC				Air To Ground	See Comm. Plan			
Prepared by (Resource Unit Leader): Gary Duranceau			Approved by (Planning Section Chief) Mike Crawford			Date 7/1/24	Time 1900	

DIVISION ASSIGNMENT LIST		1. Branch	2. Division / Group <b>BOAT</b>				
3. Incident Name <b>Pioneer</b>		4. Operational Period Date: <b>07/02/2024</b> Time: <b>0700-2100</b>					
5. Operations Personnel							
Operations Chief	Jon Larson / Jeff Bortner (T)		Division / Group Supervisor	Nate Crawford / Seth Ellis (T)			
Operations Chief (Plans)			Branch Director				
Safety Officer	Matt Broyles / Eric Brown		Air Attack Supervisor	Jamie Lilienthal			
6. Resources Assigned this Period							
Strike Team / Task Force / Resource Designator	Leader	Number Persons	Tentative Last Work Day	Drop Off Pt / Time	Pick Up Pt / Time		
1. O-161 TFLD Boat Coordinator	Cameron Chambers	1	7/3	Lucerne	Lucerne		
2. O-160 TFLD	Brian Turner	1	7/3	ICP	ICP		
3. O-162 HEQB	Nick Glatt	1	7/2	ICP	ICP		
4. O-332 HEQB	Eric Weinke	1	7/15	ICP	ICP		
5. O-342 TFLD	Mike Hill	1	7/10	ICP	ICP		
6. O-248 TFLD (T)	Jason Ward	1	7/9	Lucerne	Lucerne		
7. O-263 TFLD (T)	Aaron Pedersen	1	7/12	ICP	ICP		
8. O-163 HEQB (T)	Emma Ahlrichs	1	7/3	Lucerne	Lucerne		
9. O-369 TFLD (T)	KATY GIDDINGS	1	7/15				
10. E-1 TBOT WA-NCP NPS	Sonja Shaw	1		Stehekin	Stehekin		
11. E-3 TBOT Chelan Co. F&R#7	Chris Colbert <sup>Brown ASHER</sup>	2		Lucerne	Lucerne		
12. E-12 TBOT WA-OWF Chelan RD	Dick Gordon	1		FS Dock	FS Dock		
13. E-43 TBOT Llama Boat	Gayle Thomas	1		FS Dock	FS Dock		
14. E-91 TBOT DNR Mud Puppy	Curt Hekkila	1		Lucerne	Lucerne		
15. E-120 TBOT Pilgram	Justin Gavin	1	7/11	Lucerne	Lucerne		
16. E-121 TBOT Brinnon Fire	Christopher Dolan	2	7/12	Chelan	Chelan		
17. <del>E-190</del> TBOT Chelan County Sheriffs	Rich Magnussen	2		FS Dock	FS Dock		
18. <del>E-98</del>							
19. O-136 MEDIC 6	Steve Medina	1	7/8	Lucerne	Lucerne		
20. O-308 EMT 4	Justin Dominguez	1	7/12	Lucerne	Lucerne		
21.							
22.							
23. TBD:							
24. (1)HEQB							
7. Control Operations							
<b>Task:</b> Contain fire spread to the southwest where terrain and fuels allow for high probability of success. Assess fire perimeter progression to the west/southwest at higher elevations.							
<b>Purpose:</b> To slow fire progression, provide time for suppression tactics, and prep around critical values.							
<b>End state:</b> Minimize fire impacts to critical values including private inholdings and Forest Service infrastructure							
8. Special Instructions							
<ul style="list-style-type: none"> <li>In large or long-term spike camps use helicopters, boats, or pack stock to deliver portable backcountry latrines and remove human waste if necessary. If camp does not have adequate pack, boat, or air support for human waste management, establish community latrines well away from water sources and common areas. Use human waste bags, if necessary.</li> <li>Ensure hazard mitigations and IWI protocols are in place before taking action.</li> </ul>							
9. Division / Group Communication Summary							
Function	Frequency	System	Channel	Function	Frequency	System	Channel
Command Repeater	See Comm Plan			Command	See Comm. Plan		
TAC				Air To Ground	See Comm. Plan		
Prepared by (Resource Unit Leader): Gary Duranceau			Approved by (Planning Section Chief): Mike Crawford		Date: 7/1/24	Time: 1900	



1. Incident Name:		2. Date/Time Prepared:			3. Operational Period:						
<b>PIONEER</b>		Date: 07/01/2024 Time: 1600	Date/Time From: 07/02/2024 0600	Date/Time To: 07/03/2024 0600							
4. Basic Radio Channel Use:											
Zone Group	Ch #	Function	Channel Name/Trunked Radio	Assignment	RX Freq	RX Tone/NAC	TX Freq	TX Tone/NAC	Mode (A,D, or M)	Remarks	
	1	TACTICAL	TAC 1	DIV A & S	168.0500	123.0	168.0500	123.0	A		
	2	TACTICAL	TAC 2	DIV D	168.2000	123.0	168.2000	123.0	A		
	3	TACTICAL	TAC 3	DIV Z	168.6000	123.0	168.6000	123.0	A		
	4	TACTICAL	TAC 4	DIV H / CONT	166.7250	123.0	166.7250	123.0	A		
	5	TACTICAL	TAC 5	ROADS	166.7750	123.0	166.7750	123.0	A		
	6	TACTICAL	TAC 6	BOAT	168.2500	123.0	168.2500	123.0	A		
	7	COMMAND	CMD 7	ALL	168.4750	123.0	165.4000	123.0	A	CHELAN BUTTE	
	8	COMMAND	CMD 8	ALL	169.5375	123.0	164.7125	123.0	A	OLD MAID MT	
	9	COMMAND	CMD 9	ALL	170.4500	123.0	168.1000	123.0	A	MOORE MT	
	10	COMMAND	CMD 10	ALL	170.0125	123.0	165.2500	123.0	A	SLIDE RIDGE	
	11	COMMAND	CMD 11	ALL	170.4125	123.0	165.9625	123.0	A	FOX PEAK	
	12	TACTICAL	A/G PRI	ALL DIVS	169.1500	000.0	169.1500	000.0	A		
	13	AIR TO GROUND	A/G SEC	ALL DIVS	168.4000	000.0	168.4000	000.0	A		
	14	AIR TO GROUND	A/G 3	ALL DIVS	166.6125	000.0	166.6125	000.0	A	TAKE OFF LANDING CHANNEL	
	15	AIR TO GROUND	VMED 29	ALL DIVS	155.3475	156.7	155.3475	156.7	A	AIR EMS COORDINATION	
	16	AIR TO GROUND	AIRGUARD	ALL DIVS	168.6250	000.0	168.6250	110.9	A	EMERGENCY AIRCRAFT CONTACT	
5. Special Instructions: 24 hour staffing: PIONEER COMMUNICATIONS PHONE NUMBER: (208) 891-7948 / CURRENT CLONE "PIE 6-21"											
6. Prepared By COM1				Name: SETH BAUMGARTEN				Signature: <i>Seth Baumgarten</i>			
ICS 205				IAP Page				Date/Time: 07/02/24 1600			



PIONEER FIRE SAFETY MESSAGE 07/02/24

## LEADER'S INTENT AND YOUR SAFETY

Leader's intent as defined by the National Wildfire Coordinating Group (NWCG)

*Leader's intent is a clear, concise statement about what people must do to succeed in their assignments.*

There are 3 components to putting leader's intent into practice.

**Task:** What is the goal or objective of the assignment?

- This is where the tools hit the dirt, the saws cut the brush, and the details come into play.

**Purpose:** Why the assignment needs to be done.

Simply stated, it is why you are doing the what! Everyone wants to know the why. This is empowerment at the most basic level.

**End State:** How the situation should look when the assignment is successfully completed.

- Basically, the finished product. It is what right looks like from the fireline in a specific division, to the control of the fire overall, to the protection of the values at risk and ultimately meeting all the incident objectives created by the Incident Commander and approved by the Agency Administrators.

## LEADER'S INTENT AND HOW IT RELATES TO YOUR SAFETY

If you have clear leader's intent you should be working within a valid RISK MANAGEMENT DECISION PROCESS that identifies missions with the highest probability for success. No mission is worth the injury of firefighters or the public!



NWCG WEEK OF REMEMBRANCE SIX MINUTES FOR SAFETY DAY 3

Prepared by: NW-7 Safety Officers Eric Brown and Matt Broyles



## FINANCE MESSAGE

**Finance Email:** [2024.pioneer.finance@firenet.gov](mailto:2024.pioneer.finance@firenet.gov)

**Finance Phone:** 484-501-1835

**This incident requires electronic documentation.** Please email your time to the address above. Scanned PDF's please, no .JPG's. Feel free to call finance for help if needed. Scanners are also available at ICP.

### Required Documents

Overhead, Agency Crews & Cooperators	Contract Resources
<b>Finance docs needed:</b> Resource Order, Manifest, Cooperative Agreement, Casual Hire Form w/ECI# (as applicable)	<b>Finance docs needed:</b> Resource Order, Manifest, Full Contract/Agreement, Certifications ( <i>if required</i> ) Pre-Inspection
<b>Daily:</b> CTRs, Shift Tickets  <b>CTR's should be named as:</b> CTR_RO#_YYMMDD-DD (Ex: CTR_O235_240605-07)  Electronic CTR available! Use QR code on front cover	<b>Daily:</b> CTRs, Shift Tickets, receipts (claims, etc.) <b>NOTE: Document travel times and odometer readings</b>  <b>Shift Tickets should be named as:</b> ST_RO#_YYMMDD-DD (Ex: ST_E5_240623-27)  Electronic shift ticket available! Use QR code on front cover
<b>Demob:</b> Signed OF-288; Signed OF-286	<b>Demob:</b> Contractor Evaluations, Shift Tickets, receipt(s) for Addition/Deductions, Post-Inspection, Signed OF-286
<p><b>"H-Pay"- Entitlement to Hazardous Pay Differential (5 CFR 550.904) - Hazard pay MUST be supported by a justification. If justification is not provided, you chance losing your entitlement.</b></p>	<p><b>Please call finance regarding issues with your time:</b></p> <p>No one on List today, any questions for Finance, please email us.  <b>Thank You.</b></p>

Incident Name: **Pioneer**  
 Incident Number: **WA-SES-000173**  
 Financial codes:  
 WA DNR – **221-LDW**  
 DOI – **RZ79**  
 USDA – **PNRZ79 (1522)**

**Please make sure you check in using QR code on the front of the IAP and then email your time daily.**  
**THANK YOU!!**

- The fire is burning within an infestation of common crupina, a WA State Class A Noxious weed. Prevent spread of crupina off site – plan to wash hose and other equipment. Request fire fighters brush boots before boarding boat or before entering National Park Service Land.
- Inspect slings and remove all plant/soil material prior to use.
- Ensure all camps, staging areas, helispots and cargo areas are free of invasive plants to prevent spread to un-infested areas.
- Weed wash all vehicles, including boats, when they arrive to the incident and when demobed.

#### *Fisheries /Aquatic Recommendations*

- If trees must be felled in riparian areas for suppression or safety reasons, fell them toward streams where possible and minimize bucking where possible.
- Non-mechanized suppression activities are recommended within Riparian Reserves (150-300 ft from stream channel). For example, consider hand lines instead of dozer lines when feasible.

#### *Retardant Use*

- Retardant avoidance areas are present in the fire suppression area for both aquatic and terrestrial species.
- Track all retardant drops – locations and amounts.
- Report all mis-applications ASAP to READ. Monitoring and reporting of misapplications is required.

#### *Wet Meadows*

- No line or other disturbance in wet meadows in the Summer Blossom area (east of South Navarre campground above and below the 8200 road) and at Coyote and Poison Springs at the headwaters of their respective creeks.

#### *Dry Meadows*

- Minimize disturbance from staging and parking areas in dry meadows. These areas recovery slowly and are vulnerable to invasive plant infestation.

#### *White Bark Pine*

- Avoid cutting white bark pine whenever possible. Needles of 5 keep it alive! Ask READ for help with ID.

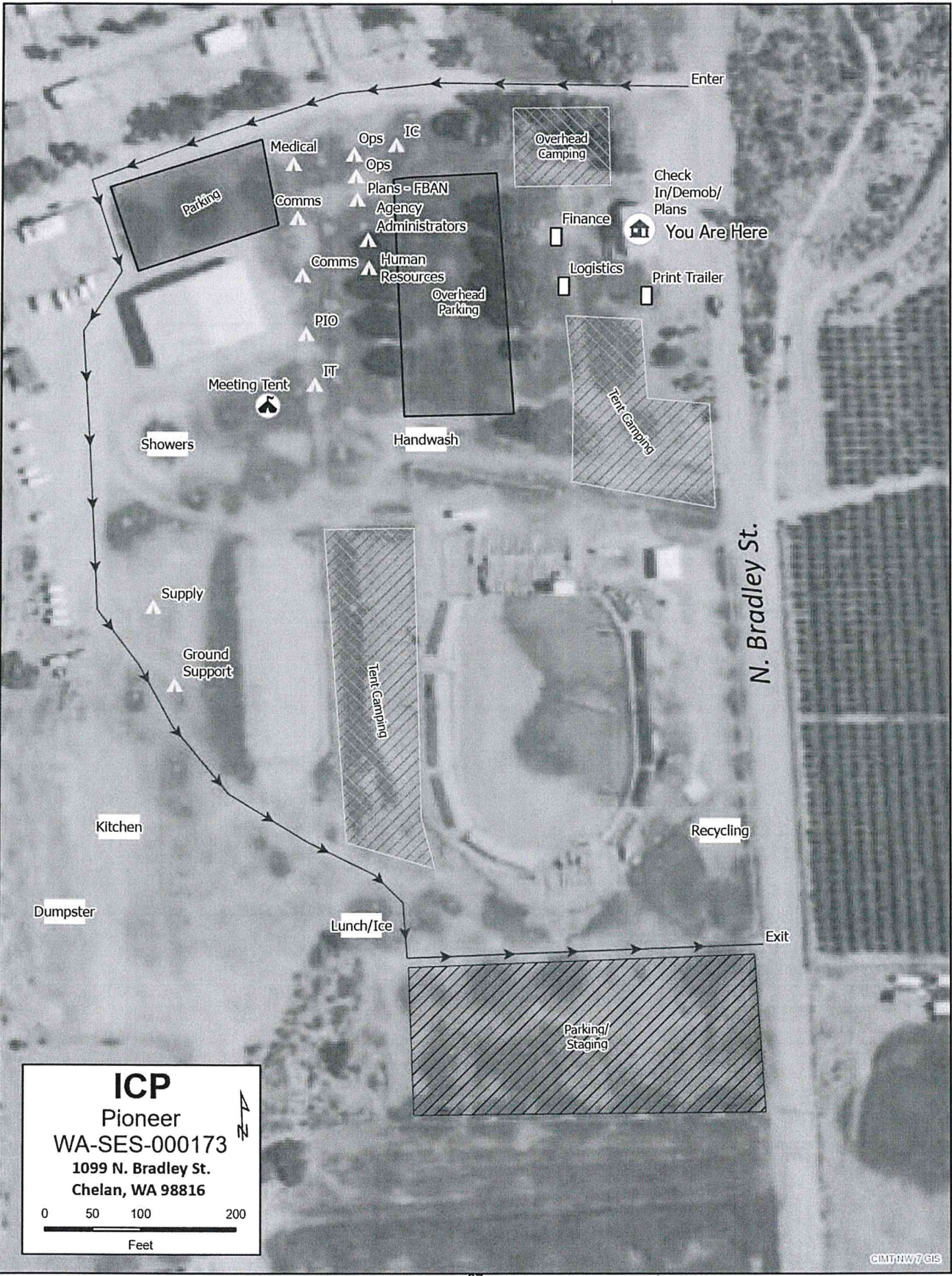
#### *Burnout operations*

- Plan to protect whitebark pine of all ages and mature cold and moist forest during burnouts. READ consultation and line officer approval is required for burn plans that include these forest types.
- During burnouts modify firing to retain large trees, large snags and large down wood in forests whenever possible.
- Minimize total acres burned in burnouts.
- Incorporate typical resource protection measures used in RX burning whenever it is safe and practical to do so (such as retention of green islands in moist areas).
- Provide a map of areas that were burned as part of the burnout operation (for use in emergency consultation).
- If cultural resources are discovered during suppression activities, leave on site and notify READ.









**ICP**  
 Pioneer  
 WA-SES-000173  
 1099 N. Bradley St.  
 Chelan, WA 98816

0 50 100 200  
 Feet

N. Bradley St.



# SHORT-HAUL OPERATIONS

## CAPABILITIES

- During an operational Short-Haul the helicopter is capable of inserting Short-Haulers into an area with tight canopy cover and/or technical terrain.
- Haul line lengths range from 100 feet to 350 feet.
- Short hauler and/or medical gear can be delivered to the medical scene even if extraction by short-haul is not necessary.

## ORDERING

- EMT or Medical Incident IC determines medical extraction is required.
- Follow local established procedures and/or Medical Incident Report (MIR) in the IRPG.
- Confirm aircraft type, call sign, estimated time of arrival and frequency.
- Give site selection information when ordering: hazards (i.e. ash, smoke, snags, aerial), tree height, terrain, and patient transport configuration (supine or seated position). Repeat hazards and give updated weather conditions as well as brief patient update to responding helicopter.

**PROCESS:** The helicopter will fly to the coordinates provided. They will make contact with ground personnel on scene with the patient using an identified air-to-ground frequency. The helicopter will complete a short-haul recon and size up, gather patient update information and then fly to a landing zone (LZ) to configure for short-haul operations. The helicopter will be monitoring the appropriate air-to-ground, air guard and victor frequencies. From this point, ground resources should only contact the helicopter in case of an emergency. During the insertion and extraction process ground personnel must be clear of the area.

## ON SCENE – EXPECT THE FOLLOWING

- 1 or 2 rescuers (at least one qualified as an EMT or higher)
- Backboard (if needed and not already on scene)
- All equipment necessary for patient extraction

The Patient Extraction Bag accommodates most backboards.

- A patient on a backboard, TRS, SKED or litter will be inserted into the



The Seat Harness is used for patients not requiring the use of a backboard.





## Check In Message

- Please complete the virtual check-in process via the QR code on the front cover.
- You are not checked in until you provide the following:
  - 1) Red Cards
  - 2) Roster/Manifest
- Please email documents to: [2024.pioneer.checkin@firenet.gov](mailto:2024.pioneer.checkin@firenet.gov)

Any Questions:

Phone: 509-661-5372

Email: [2024.pioneer.checkin@firenet.gov](mailto:2024.pioneer.checkin@firenet.gov)

---

## Demob Message

- Fliers complete the "Air Travel Request" via the QR code on the front cover 72 hours prior to flight date.
- Return supplies to the Cache.
- Return radios, antennas, etc., to Communications.
- All contract equipment and vehicles driven in fire area will need to do weed wash.
- Contact Finance about closing out your paperwork.
- Once the above items have been completed, SCAN the QR code on the front cover and complete the demob questions.

Any Questions:

Phone: 509-661-5376

Email: [2024.pioneer.demob@firenet.gov](mailto:2024.pioneer.demob@firenet.gov)



# Last Work Day / Demob Report

Incident: PIONEER US-WA-SES-000173

Questions ?? Jay at (509) 661-5376

SMOD	O-147	SMOD - CA-LNP CREW76
SMOD	O-148	SMOD - MODULE - SUPPRESSION - HVP - CREW 1
TFLD	O-160	TURNER, BRIAN WAYNE
TFLD	O-161	CHAMBERS, CAMERON DREW
THSP	O-170	NEIDER, TONYA
THSP	O-171	SHAW, SONYA
THSP	O-176	GEMPKO, VICKI





## MEDICAL PLAN (206 WF)

<b>BRANCH II</b>	<b>EMS Responders &amp; Capability:</b>	REMS 2 Brayden Kirk + 3 (DIV D) 509-264-8203 Kevin Smith MEDL/EMPF (Stehekin FOB) 509-710-0239 Jed Getman MEDL/AEMF (Stehekin FOB) 541-391-3243
	Equipment Available on Scene:	ALS Kit, Monitor/Defib, O2, Rescue Gear
	Medical Emergency Channel:	Command 7, 8, 9, 10, 11 (Linked)
	ETA for Ambulance to Scene:	
	Air:	2 hr
	Ground:	3 hr
	Approved Heli-Spot:	
	Lat:	H14 48° 20.760' N
	Long:	120° 43.242' W
<b>BRANCH IV</b>	<b>EMS Responders &amp; Capability:</b>	MEDIC 9 Benjamin McCall (DIV H) 360-420-6492 AMBO 2 Anna Reynolds (DIV H) 509-768-5519
	Equipment Available on Scene:	ALS Kit, Monitor/Defib, O2
	Medical Emergency Channel:	Command 7, 8, 9, 10, 11, 12 (Linked)
	ETA for Ambulance to Scene:	
	Air:	2 hr
	Ground:	3 hr
	Approved Heli-Spot:	NA
	Lat:	NA
	Long:	NA
<b>BRANCH V</b>	<b>EMS Responders &amp; Capability:</b>	MEDIC 5 Brian Linacre (CONTINGENCY) 301-781-7990 MEDIC 7 Steve Drab (CONTINGENCY) 406-600-2059 MEDIC 2 Joel Bower (DIV S) 360-461-7390 REMS 1 Ray Storm + 4 (DIV S) 415 637-0491
	Equipment Available on Scene:	ALS Kit, Monitor/Defib, O2, Rescue Gear
	Medical Emergency Channel:	Command 7, 8, 9, 10, 11, 12 (Linked)
	ETA for Ambulance to Scene:	
	Air:	2 hr
	Ground:	3 hr
	Approved Heli-Spot:	
	Lat:	H25 47° 59.200' N
	Long:	120° 16. 521' W
<b>TBD</b>	<b>EMS Responders &amp; Capability:</b>	TBD
	Equipment Available on Scene:	
	Medical Emergency Channel:	Command 7,8,9,10,11 (Linked)
	ETA for Ambulance to Scene:	
	Air:	
	Ground:	
	Approved Heli-Spot:	NA
	Lat:	NA
	Long:	NA
<b>TBD</b>	<b>EMS Responders &amp; Capability:</b>	TBD
	Equipment Available on Scene:	
	Medical Emergency Channel:	Command 7,8,9,10,11 (Linked)
	ETA for Ambulance to Scene:	
	Air:	
	Ground:	
	Approved Heli-Spot:	NA
	Lat:	NA
	Long:	NA

Prepared By (Medical Unit Leader)	Date	Reviewed By (Safety Officer)	Date
Mariann Turley MEDL	07/01/24	Matt Broyles SOFC	07/01/24
Signature: <i>Mariann Turley</i>		Signature: <i>Matt Broyles</i>	