

CORRECTED



JULY 04, 2024

OPERATION PERIOD

Day: 0700 - 2100

COMMUNICATIONS 24-HOUR
EMERGENCY NUMBER

(208) 891-7948

PIONEER CHARGE CODES

USFS: PN RZ79 (1522)

DOI: RZ79

WA DNR: 221-LDW

SEND PHOTOS TO:

2024.pioneer@firenet.gov

THURSDAY



Maps, IAP,
Finance / Eval.



PIONEER INCIDENT ACTION PLAN

Pioneer

WA-SES-000173



Notes

	Ground	Air
FS:		
DNR:		
OSC:		
FS AA:		
DNR AA:		

INCIDENT OBJECTIVES	1. Incident Name PIONEER	2. Date Prepared 07/03/2024	3. Time 1900
---------------------	------------------------------------	---------------------------------------	------------------------

4. Operational Period
Day Operations: 0700-2100

Strategic Framework:
The Pioneer Fire is a full suppression fire utilizing strategies and tactics that provide the highest likelihood of success while mitigating risks to the responders and public. Extreme terrain prevents direct attack. Indirect lines are being identified and established that reduces risk to responders while protecting identified values including private and federal infrastructure and recreational values.

- Management Objectives:**
- Ensure the safety and well-being of responders and the public by making timely risk-informed decisions that align with values at risk.
 - Protect private and federal infrastructure and recreational values.
 - Foster relationships with local cooperators and the public by providing coordinated, accurate, and timely information.
 - Coordinate suppression activities with READ's to identify and mitigate current and future impacts to the landscape and resources.
 - Treat each other with dignity and respect and act in a professional manner on the fire and in the communities.
 - Manage cost commensurate with values at risk by coordinating with the Agency Administrators and Incident Business Advisors.

- Operational Objectives:**
- Implement an effective suppression strategy utilizing direct attack where and when appropriate to protect values at risk. When fire behavior, terrain, or safety concerns prohibit direct attack, utilize other suppression tactics such as indirect and point protection as appropriate to reduce risk to responders. Take advantage of natural features such as breaks in fuels, topographic features, or changes in weather.
 - Establish indirect control lines with the highest probability of success which prevent fire spread into populated areas.
 - Communicate with local law enforcement officials to ensure current and potential evacuations are coordinated.

6. Weather Forecast for Period

7. General Safety Message

8. Attachments (mark if attached)

X	Organization List - ICS 203	X	Medical 206WF - 8 Line	X	Finance Message
X	Div. Assignment Lists - ICS 204	X	Safety Message		Dutch Creek Protocol
X	Communications Plan - ICS 205		LCES - ICS 215A		Phone List
X	Medical Plan - ICS 206	X	Weather Forecast	X	Incident Map(s)
X	Air Operation Summary - ICS 220	X	Fire Behavior	X	Unit Log

Prepared by Planning Section Chief <i>Mike Crawford</i>	Approved by Incident Commander <i>Nate W. Fike</i>
--	---

ORGANIZATION ASSIGNMENT LIST		Supply Unit	Vicki Cunningham
1. Incident Name PIONEER		IT Specialist	Mike Gascon / Chad Funnemark / Ben Smith (T)
2. Date Prepared JULY 3, 2024	3. Time Prepared 1800	Receiving Distribution	Michael Hanson / David Richards (Stehekin) / Martin Eversaul (Lucerne)
4. Operational Period JULY 4, 2024 0700 – 2100		Ordering Manager	Noe Reyes / Kerry Johnston
5. Incident Commander and Staff		Ground Support Unit	Casey Glade / Joe Keady
Position	Name	Communication Unit	Seth Baumgarten / Michael Merrick (T)
Incident Commander	Nate LeFevre	Communication Tech.	Keith Schaff / Kevin Judd
Incident Commander (T)	Steve North	Food Unit	Kristy Naughton / John Cody/Shawna Monroe (T) / Steven Bales (T)
Deputy Incident Commander	Chris Orr	Security Manager	Michael Fakier
Safety Officer	Matt Broyles / Eric Brown	Medical Unit	Mariann Turley / Cass Monroe (T) / Jed Getman / (Stehekin) / Londa Van Kirk
Information Officer	Cheyne Rossbach	9. Operations Section	
Liaison	Shawn Christianson / Greg Brody (Stehekin) / Mark Suba / Rhonda Marchand (T)	OPS Section Chief - Lead	Jon Larson / Jeff Bortner (T)
Human Resources	Margaret Dietrich	OPS Section Chief - Planning	
READ Liaison	Courtney Rowe	OPS Section Chief – Field	Seth Merritt
6. Agency Representatives		a. Branch I	
Agency	Name	Branch Director	Scott Ebel / Josh Verellen (T)
USFS Oka/Wen Agency Admin	Chris Furr	Division A	Seth Missal / James Fields (T)
USFS Oka/Wen Agency Admin (T)	Paul Willard	Division Z	Travis Baker/ Frank Heilman (T)
DNR Agency Administrator	Larry Leach	b. Branch II	
DNR Deputy Agency Administrator	Wyatt Leighton	Branch Director	Scott Ebel / Josh Verellen (T)
NPS Agency Administrator	Don Striker	Division D	Andrew Schaffran
NPS Agency Representative	Denise Shultz	c. Branch IV	
7. Planning Section		Branch Director	Roger Goldman
Plans Section Chief	Mike Crawford	Division H	Matt Ziegler / Steve Abrams (T)
Deputy Plans Section Chief	Debbie Plummer (T)	d. Branch V	
Resource Unit	Gary Duranceau	Branch Director	Roger Goldman
Status Check-in	Katelyn Roeder/ Charlie Hardy	Division S	Linda Gibson
Situation Unit	Shannon Theall / Ray Moeckel (T)	Division Contingency / Roads	Jennifer Harris / Eric Metzger (T)
GIS Specialists	Aleksandar Dozic / Olivia Hughes (T)	Division Staging	Jon Merager
Demob Unit	Jay Lord	Division Boat	Nate Crawford / Seth Ellis (T)
Documentation Unit	Chris Oelschlager	e. Air Operations Branch	
Incident Meteorologist	Todd Carter / Maddie Kristell (T)	AOB Director – Planning	Mark Hocken
Fire Behavior Analyst	Steve Ziel / Michael Bowden	AOB Director – Field	Ted Hass
Strategic Operational Planner	Greg Funderburk	HELCO ATGS	Jamie Lilienthal
Air Resources Advisor	Dan Byrd	10. Finance Section	
8. Logistics Section		Finance Section Chief	Andrea Andresen / Lori Bailey (T)
Logistics Section Chief	Franklin Vaughan / Larry Falcon (T)	Time Unit	Beverly Hollars
Deputy Logistics Section Chief	Max Yager (Stehekin) / Cindy Wedekind (Lucerne)	Procurement	Audrey Mainwaring
Facilities	Jan Robbins / Kelsy Lipp / Peter Drott (T) / Mike Prevost (T)	Comp/Claims	Kelly Lorenz (Virtual)
Base Camp Manager	Dave Lefevre/Mac McEntyre(T)	Cost Unit	Dede Domingos (Virtual)
Prepared by Gary Duranceau, RESL			



Fire Weather Forecast



FORECAST NO: 22
PREDICTION FOR: 24 Hr Shift
SHIFT DATE: Wednesday 7/4/2024
TIME AND DATE ISSUED: 7/3/2024 1900 hrs

INCIDENT: Pioneer Fire
SIGNED: *Madelyn Kristell*
Incident Meteorologist Trainee (IMET)

Discussion: *** An Excessive Heat Warning has been issued by the National Weather Service in Spokane effective Saturday through Tuesday***

High pressure has nudged its way into the area from the south, promoting warmer temperatures and lower relative humidity values. The wind pattern is more supportive of diurnal winds returning, with no considerable force driving the northwesterlies that have occurred over the past several days. Much hotter temperatures and lower relative humidity values are expected to linger into early next week. Heat related health impacts will be of concern given both the hot temperatures and warm overnight low temperatures that will not offer adequate relief from the heat.

WEATHER FORECAST FOR TODAY/INDEPENDENCE DAY:

SKY/WEATHER: Sunny.

MAX TEMPERATURE: 89 to 92 valleys/mid-slopes. 65 to 69 around 5000 feet.

MIN RH: Poor Recovery 18 to 25 percent valleys/mid-slopes. 30 to 35 percent ridges around 5000 feet.

20 FT WINDS:

Lower Valleys: Southeast becoming northwest 5 to 10 mph gusts to 15 mph. Strongest wind down lake and aligned drainages.

Mid-slopes and Ridges: Southeast becoming northwest 9 to 12 mph gusts to 20 mph.

HAINES INDEX: 3 Very Low.

TRANSPORT WINDS: NW 10 mph.

INVERSION: Weak inversion lifting by 0800. Mixing height of 10,000 ft by 1500.

TONIGHT:

SKY/WEATHER: Clear.

MIN TEMPERATURE: 61 to 65 valleys/mid-slopes. 45 to 50 around 5000 feet.

MAX RH: Poor Recovery. 30 to 40 percent valleys/mid-slopes. 40 to 50 percent ridges around 5000 feet.

20 FT WINDS:

Valleys/Lower Slopes: Northwest down lake 8 to 10 mph with gusts to 15 mph in the evening.

Mid-Slopes and Ridges: Northwest 10 to 15 mph gusts to 20 mph in the evening.

INVERSION: Developing after 2100 hrs to near 1000 ft.

FRIDAY:

SKY/WEATHER: Sunny.

MAX TEMPERATURE: 90 to 95 valleys/mid-slopes. 63 to 70 around 5000 feet.

MIN RH: 15 to 20 percent valleys/mid-slopes. 20 to 30 percent ridges.

20 FT WINDS:

Lower Valleys: Southeast becoming northwest in the afternoon at 6 to 12 mph.

Mid-slopes and Ridges: Southwest to northwest 10 to 15 mph.

HAINES INDEX: 4 Moderate.

TRANSPORT WINDS: W 10 mph.

Boating concerns Tuesday: Wind waves estimated at 1-2 feet or less on Lake Chelan due to weaker winds.

Aviation concerns Tuesday: Temperature near 20C at 4000 feet for load calcs. With hotter temperatures comes an increased likelihood in thermal turbulence due to unequal heating on the terrain surfaces.

Weather observations can be texted to 509-319-0474 or emailed to todd.carter@noaa.gov

Fire Behavior Forecast # 23

Name of Incident: Pioneer	Administrative Unit: SE Region DNR / Okanogan-Wenatchee NF
Date & Time Issued: July 3, 2024 @ 1900	Operational Period: DAY 07/04/2024
FBAN: Steve Ziel	Signed: /z/

Assumptions: Hot and dry conditions will likely result in an observable increase in fire behavior starting today. Current fuel conditions will support active fire spread. Fire behavior is being inhibited by early season fuel conditions, and discontinuity of the fuel bed. Expect moderate-to active burning conditions between 1300-1800. Persistent burning and heat retention in heavy fuels will serve as ignition sources as drying occurs. Live fuels are not contributing to fire spread at this time. Lake effect winds (up or down lake) dominate lower and mid slopes; the fire is on a dry S/SW aspect with steep side drainages that provide upslope winds. Wind/slope alignment and/or lake wind influence and fire spread rate and direction. Expect down lake gusty winds, with gusts to 20 mph on ridgetops.

Weather Summary

*See attached Fire Weather Forecast

Fire Behavior Summary

Fuels in the fire area are composed of a mosaic of *Timber Litter, Grass, Timber with Understory, and Grass/Shrub* models. The fire is burning in the Rex Creek (2001) fire footprint. Primary tree species include mixed sizes and densities of Douglas Fir and Ponderosa Pine. Local timber litter is compact to fluffy. Brush and understory species include ceanothus, hardwoods, and dog-hair conifer reproduction. Large snags and heavy downed fuel loadings are common throughout all areas. Live woody and herbaceous fuels are seasonally moist, and not contributing to rates of spread; grasses are partially to fully cured depending on elevation and aspect. Fuel conditions change by aspect, previous fire history, and elevation. Most N and E aspects include 23-year old brush and conifer trees.

Today's potential fire behavior will include isolated pockets/areas of active flanking, backing (with rollout), and limited head fire spread with wind/slope alignment. Primary spread mechanism has been backing with rollout, flanking, and fingered head fire spread. Heavy fuels are retaining heat and serve as ignition sources for fine fuels dry. Early season fuel condition is inhibiting full fire behavior potential – live fuels are moist; some grasses are still curing. Expect daily increases in fire behavior developing (hot/dry). Expect some interior flare-ups with drying. Potential for rapid slope reversal spread where is occurs.

* FFM= 4%-5%, 1000hr. moisture=12%, Woody fuels 170%, Probability of Ignition-70 -80%, Max Spotting < 0.2

Fuel Type	Rate of Spread	Flame Length	Backing ROS	
...If your work area includes -	(CH/HR = FPM)	Feet	FPM	FPM
GR2 - Moderate load grass/shrub	10 - (25 cured)	3 - 4	1-2	
SH2 – Moderate load shrub	2 - 3	2	< 1	
TU5 - High load Timber w/ Understory	10 - 12	7- 8	1	
TL8 – Long needle timber litter	11 - 13	4- 6	1 +	

Specific Assignments:

Div. A – Expect creeping, backing, and flanking in upper Meadow & Cascade Cr. Potential upslope short finger runs in draws.

Div. Z –Ragged fire edge on north side of Prince Cr will creep, flank, and back with rollout. No Name creek backing may accelerate.

Other Divisions – Should not be affected by fire activity during the burn period. Monitor smoke direction and amount. Assess fuels.

***IA** – Ensure good size-up before engaging. Assess fire spread potential based on fuel, weather, topography and values at risk.

Air Operations: SE winds becoming NW at ridge top wind gusting to 30 mph. Complex terrain watch for lee-side turbulence.

Safety

FINE FUELS are VERY responsive to the effects of temperature and humidity...monitor your conditions. Anticipate current conditions to continue for the next several days.....anticipate fire behavior before you observe it, anticipate your actions before need to act. **Remember** : fine fuels + wind = rapid rate of spread ; timber litter + wind = high intensity fire with torching and spotting; moss + ladder fuels= torching and spotting.

Base all actions on current and expected behavior of the fire (evaluate your situation and the fire activity – anticipate rate of change, consider “what-if’s”, establish trigger points).

*Today's Fire Behavior Forecast contains 685 words written for your situational awareness.

DIVISION ASSIGNMENT LIST			1. Branch I		2. Division / Group A		
3. Incident Name Pioneer			4. Operational Period Date: 07/04/2024 Time: 0700-2100				
5. Operations Personnel							
Operations Chief	Jon Larson / Jeff Bortner(T)		Division / Group Supervisor		Seth Missal / James Fields (T)		
Operations Chief (Plans)			Branch Director		Scott Ebel / Josh Verellen (T)		
Safety Officer	Matt Broyles / Eric Brown		Air Attack Supervisor		Jamie Lilienthal		
6. Resources Assigned this Period							
	Strike Team / Task Force / Resource Designator	Leader	Number Persons	Tentative Last Work Day	Drop Off Pt / Time	Pick Up Pt / Time	
1.	O-180 TFLD	Joe Landburg	1	7/10	DP-22 / Moore Point	DP-22 / Moore Point	
2.	O-266 TFLD (T)	Frank Bojorquez	1	7/12	DP-22 / Moore Point	DP-22 / Moore Point	
3.							
4.	**C-13 CRW1 Vale IHC	Glen Heitz	20	7/4	DP-26	DP-26	
5.	C-28 CR21 Entiat	Tyler Herdman	22	7/16	DP-22 / Moore Point	DP-22 / Moore Point	
6.							
7.	O-67 MEDIC 3	Adam Lathrop	1	7/4	DP-22 / Moore Point	DP-22 / Moore Point	
8.	O-359 MEDIC 12	Ethan Biederman	1	7/16	DP-22 / Moore Point	DP-22 / Moore Point	
9.	O-310 EMT 5	Dave Repnik	1	7/14	DP-22 / Moore Point	DP-22 / Moore Point	
10.							
11.	O-175 SOFR	Melissa Moore	1	7/11	DP-22 / Moore Point	DP-22 / Moore Point	
12.	O-352 SOFC	Kris Croddy	1	7/16	Lucerne	Lucerne	
13.							
14.							
15.							
16.							
17.							
18.							
19.							
20.							
7. Control Operations							
Task: Contain fire spread to the northwest where terrain and fuels allow for highest probability of success. Assess fire perimeter progression to the north and west at higher elevations. Implement point protection efforts on federal & private infrastructure.							
Purpose: To slow fire progression, provide time for suppression tactics, and continue to prep around critical values.							
End state: Minimize fire impacts to critical values including private inholdings and Forest Service infrastructure.							
8. Special Instructions							
<ul style="list-style-type: none"> In large or long term spike camps use helicopters, boats, or pack stock to deliver portable backcountry latrines and remove human waste if necessary. If camp does not have adequate pack, boat, or air support for human waste management, establish community latrines well away from water sources and common areas. Use human waste bags, if necessary. Minimize ground disturbance on the Moore Point and Meadow Creek alluvial fans in order to protect sensitive resources. Hose used from Prince Creek to Moore Pt: contaminated with invasive plants. Do not reuse. Backhaul to Moore Pt DP22 and store in "infested hose" area at Moore Pt until decontaminated. ** Denotes available for Initial Attack 							
9. Division / Group Communication Summary							
Function	Frequency	System	Channel	Function	Frequency	System	
Command Repeater	See Comm Plan			Command	See Comm. Plan		
TAC				Air To Ground	See Comm. Plan		
Prepared by (Resource Unit Leader): Gary Duranceau			Approved by (Planning Section Chief) Mike Crawford			Date 7/3/24	Time 1900

A-DIVISION ASSIGNMENT LIST				1. Branch I	2. Division / Group Z			
3. Incident Name Pioneer				4. Operational Period Date: 07/04/2024 Time: 0700-2100				
5. Operations Personnel								
Operations Chief		Jon Larson / Jeff Bortner (T)		Division / Group Supervisor		Travis Baker / Frank Heilman (T)		
Operations Chief (Plans)				Branch Director		Scott Ebel / Josh Verellen (T)		
Safety Officer		Matt Broyles / Eric Brown		Air Attack Supervisor		Jamie Lilienthal		
6. Resources Assigned this Period								
	Strike Team / Task Force / Resource Designator	Leader	Number Persons	Tentative Last Work Day	Drop Off Pt / Time	Pick Up Pt / Time		
1.	O-182 WFM1 Selway	JT Sohr	14 3	7/8	DP-34	DP-34		
2.								
3.	A-78 UR-31	Marshal Wallace	4	7/9	DP-34	DP-34		
4.								
5.	O-307 MEDIC 8	Rick Kelly	1	7/11	DP-34	DP-34		
6.								
7.	O-174.52 SOFR	George Libercajt	1	7/7	DP-27 / Lucerne	DP-27 / Lucerne		
8.								
9.								
10.								
11.								
12.								
13.								
14.								
15.								
16.								
17.								
18.								
19.								
20.								
7. Control Operations								
Task: Contain fire spread to the southeast where terrain and fuels allow for high probability of success. Assess fire perimeter progression to the east/southeast at higher elevations.								
Purpose: To slow fire progression, provide time for suppression tactics, and continue to prep around critical values.								
End state: Minimize fire impacts to critical values including private inholdings and Forest Service infrastructure								
8. Special Instructions								
<ul style="list-style-type: none"> In large or long term spike camps use helicopters, boats, or pack stock to deliver portable backcountry latrines and remove human waste if necessary. If camp does not have adequate pack, boat, or air support for human waste management, establish community latrines well away from water sources and common areas. Use human waste bags, if necessary. Ensure hazard mitigations and IWI protocols are in place before taking action. Hose used from Prince Creek to Moore Pt: contaminated with invasive plants. Do not reuse. Backhaul to Moore Pt DP22 and store in "infested hose" area at Moore Pt until decontaminated. 								
9. Division / Group Communication Summary								
Function	Frequency	System	Channel	Function	Frequency	System	Channel	
Command Repeater	See Comm Plan			Command	See Comm. Plan			
TAC				Air To Ground	See Comm. Plan			
Prepared by (Resource Unit Leader): Gary Duranceau			Approved by (Planning Section Chief): Mike Crawford			Date: 7/3/24	Time: 1900	

DIVISION ASSIGNMENT LIST			1. Branch II		2. Division / Group D		Page 1 of 2	
3. Incident Name Pioneer			4. Operational Period Date: 07/04/2024 Time: 0700-2100					
5. Operations Personnel								
Operations Chief		Jon Larson / Jeff Bortner (T)		Division / Group Supervisor		Andrew Schaffran		
Operations Chief (Plans)				Branch Director		Scott Ebel / Josh Verellen (T)		
Safety Officer		Matt Broyles / Eric Brown		Air Attack Supervisor		Jamie Lilienthal		
6. Resources Assigned this Period								
	Strike Team / Task Force / Resource Designator	Leader	Number Persons	Tentative Last Work Day	Drop Off Pt / Time	Pick Up Pt / Time		
1.	O-183 TFLD	Harley Hamman	1	7/6	Stehekin	Stehekin		
2.								
3.	O-301 HECM	Malachy Stiefel	1	7/13	Stehekin	Stehekin		
4.	O-302 HECM	Daniel Miller	1	7/13	Stehekin	Stehekin		
5.								
6.	O-278 SMOD Crew 84	Geoff Hibbs	5	7/9	Stehekin	Stehekin		
7.	O-187 WFM1 Grass Lake	William Johnson	9	7/7	Stehekin	Stehekin		
8.	**O-218 WFM2 Olympic	Jonah Gray	10	7/6	Stehekin	Stehekin		
9.								
10.	O-184 FELB	Marty Cozart	1	7/6	Stehekin	Stehekin		
11.	O-186 FMOD Kintner Timber	Cory Kintner	2	7/6	Stehekin	Stehekin		
12.	O-185 FMOD Brothers Fire	Levi Merritt	2	7/6	Stehekin	Stehekin		
13.								
14.	O-166 REAF	Jordan Spaak	1	7/6	Stehekin	Stehekin		
15.	O-235 REAF	Cade Simpson	1	7/7	Stehekin	Stehekin		
16.	O-167 ARCH	Jason Wright	1	7/12	Stehekin	Stehekin		
17.	O-168 ARCH	Ernest Wingate	1	7/6	Stehekin	Stehekin		
18.								
19.								
7. Control Operations								
Task: Continue construction of contingency lines around the community of Stehekin.								
Purpose: Minimize fire impacts to critical values including private inholdings, the community of Stehekin, and Forest Service infrastructure.								
End state: Critical values including private inholdings, the community of Stehekin, and Forest Service infrastructure are not impacted by the Pioneer fire, while minimizing fire impacts and acres burned utilizing historic wildfire control features and natural barriers.								
8. Special Instructions								
<ul style="list-style-type: none"> In large or long term spike camps use helicopters, boats, or pack stock to deliver portable backcountry latrines and remove human waste if necessary. If camp does not have adequate pack, boat, or air support for human waste management, establish community latrines well away from water sources and common areas. Use human waste bags, if necessary. All operational personnel working on USFS lands will need to conduct a thorough inspection for invasive species seeds on boots including laces, clothing, and gear prior to entering NPS lands. Only fresh (direct from the cache) hose should be utilized on NPS lands to prevent the transport of invasive species seeds. Hose used on USFS lands should not be used on NPS lands and hose used on NPS lands should not be used on USFS lands to prevent the spread of invasives species seeds. Cargo loads being transported onto NPS lands should be inspected for invasive weed seed prior to flight. Ensure hazard mitigations and IWI protocols are in place before taking action. NPS Resource Avoidance Area Flagging is yellow with red polka dots. Contact NPS READs before working in areas where this flagging is present. ** Denotes available for Initial Attack 								
9. Division / Group Communication Summary								
Function	Frequency	System	Channel	Function	Frequency	System	Channel	
Command Repeater		See Comm Plan		Command		See Comm. Plan		
TAC				Air To Ground		See Comm. Plan		
Prepared by (Resource Unit Leader): Gary Duranceau			Approved by (Planning Section Chief) Mike Crawford			Date 7/3/24	Time 1900	

DIVISION ASSIGNMENT LIST		1. Branch II	2. Division / Group D		Page 2 of 2		
3. Incident Name Pioneer		4. Operational Period Date: 07/04/2024 Time: 0700-2100					
5. Operations Personnel							
Operations Chief	Jon Larson / Jeff Bortner (T)		Division / Group Supervisor	Andrew Schaffran			
Operations Chief (Plans)			Branch Director	Scott Ebel / Josh Verellen (T)			
Safety Officer	Matt Broyles / Eric Brown		Air Attack Supervisor	Jamie Lilienthal			
6. Resources Assigned this Period							
	Strike Team / Task Force / Resource Designator	Leader	Number Persons	Tentative Last Work Day	Drop Off Pt / Time	Pick Up Pt / Time	
20.	O-165 REMS 2	Brayden Kirk	4	7/10	Stehekin	Stehekin	
21.							
22.	O-174.88 SOFR	Leo Engleson	1	7/7	Stehekin	Stehekin	
23.	O-353 SOFL	Phillip Bordenon	1	7/17	Stehekin	Stehekin	
24.	E-89 Driver	Phillip Bossen	1	7/14	Stehekin	Stehekin	
25.							
26.							
27.							
28.							
29.							
30.							
31.							
32.							
33.							
34.							
35.							
36.							
37.							
38.							
7. Control Operations							
Task: Continue construction of contingency lines around the community of Stehekin.							
Purpose: Minimize fire impacts to critical values including private inholdings, the community of Stehekin, and Forest Service infrastructure.							
End state: Critical values including private inholdings, the community of Stehekin, and Forest Service infrastructure are not impacted by the Pioneer fire, while minimizing fire impacts and acres burned utilizing historic wildfire control features and natural barriers.							
8. Special Instructions							
<ul style="list-style-type: none"> • In large or long term spike camps use helicopters, boats, or pack stock to deliver portable backcountry latrines and remove human waste if necessary. If camp does not have adequate pack, boat, or air support for human waste management, establish community latrines well away from water sources and common areas. Use human waste bags, if necessary. • All operational personnel working on USFS lands will need to conduct a thorough inspection for invasive species seeds on boots including laces, clothing, and gear prior to entering NPS lands. • Only fresh (direct from the cache) hose should be utilized on NPS lands to prevent the transport of invasive species seeds. • Hose used on USFS lands should not be used on NPS lands and hose used on NPS lands should not be used on USFS lands to prevent the spread of invasives species seeds. • Cargo loads being transported onto NPS lands should be inspected for invasive weed seed prior to flight. • Ensure hazard mitigations and IWI protocols are in place before taking action. • NPS Resource Avoidance Area Flagging is yellow with red polka dots. Contact NPS READs before working in areas where this flagging is present. • ** Denotes available for Initial Attack. 							
9. Division / Group Communication Summary							
Function	Frequency	System	Channel	Function	Frequency	System	Channel
Command Repeater	See Comm Plan			Command	See Comm. Plan		
TAC				Air To Ground	See Comm. Plan		
Prepared by (Resource Unit Leader): Gary Duranceau			Approved by (Planning Section Chief): Mike Crawford			Date: 7/3/24	Time: 1900

DIVISION ASSIGNMENT LIST			1. Branch IV		2. Division / Group H		
3. Incident Name Pioneer			4. Operational Period Date: 07/04/2024 Time: 0700-2100				
5. Operations Personnel							
Operations Chief		Jon Larson / Jeff Bortner (T)		Division / Group Supervisor		Matt Ziegler / Steve Abrams (T)	
Operations Chief (Plans)				Branch Director		Roger Goldman	
Safety Officer		Matt Broyles / Eric Brown		Air Attack Supervisor		Jamie Lilienthal	
6. Resources Assigned this Period							
	Strike Team / Task Force / Resource Designator	Leader	Number Persons	Tentative Last Work Day	Drop Off Pt / Time	Pick Up Pt / Time	
1.	O-355 TFLD	Jason Conway	1	7/9	ICP	ICP	
2.	O-333 HEQB	Jed Neumeier	1	7/16	ICP	ICP	
3.	O-127 FMOD Rainstorm	Kendall Cain	2	7/8	ICP	ICP	
4.	O-128 FMOD Rainstorm	Mike Lind	2	7/8	ICP	ICP	
5.	O-344 FELB	Jacob Harvey	1	7/15	ICP	ICP	
6.							
7.	**E-191 ENG3 Rattlesnake Ridge	Brandon Marsh	3	7/15	ICP	ICP	
8.							
9.	E-76 WTS2 Mountain View Wildfire	Robert Martin	1	7/17	ICP	ICP	
10.	E-102 SKG2 Dukes Equipment	Justin Durston	2	7/15	ICP	ICP	
11.	E-103 MBM2 Marcon Timber	Mark Landes FORESMAN	2	7/20	ICP	ICP	
12.	E-104 MBM2 Havillah Logging	Tom Kershner	2	7/20	ICP	ICP	
13.	E-105 MBM2 Justin Pitts	Adam Bergstrom	2	7/15	ICP	ICP	
14.							
15.	O-309 MEDIC 9	Benjamin McCall	1	7/15	ICP	ICP	
16.	E-194 AMBO-2	Anna Reynolds	2	7/15	ICP	ICP	
17.							
18.	O-267 SOFR	Tom Talbot	1	7/10	ICP	ICP	
19.							
20.							
21.							
22.							
23.	TBD:						
24.							
7. Control Operations							
Task: Continue road work on both sides of the Gold Creek Rd from DP-100 to DP-72 by removing brush and debris no more than 6ft from the edge of roadway and that which causes obstructions to visibility around corners.							
Purpose: To provide better access and facilitate safe firefighter traffic on the Gold Creek corridor.							
End state: Improve roadways to provide safer and more efficient travel.							
8. Special Instructions							
<ul style="list-style-type: none"> • Work with READs to maintain resource protection • Ensure hazard mitigations and IWI protocols are in place before taking action. • Do not draft from Gold Creek above DP-102 or from Black Canyon Creek. • ** Denotes available for Initial Attack 							
9. Division / Group Communication Summary							
Function	Frequency	System	Channel	Function	Frequency	System	Channel
Command Repeater	See Comm Plan			Command	See Comm. Plan		
TAC				Air To Ground	See Comm. Plan		
Prepared by (Resource Unit Leader): Gary Duranceau			Approved by (Planning Section Chief): Mike Crawford			Date: 7/3/24	Time: 1900

DIVISION ASSIGNMENT LIST			1. Branch V		2. Division / Group S		
3. Incident Name Pioneer			4. Operational Period Date: 07/04/2024 Time: 0700-2100				
5. Operations Personnel							
Operations Chief		Jon Larson / Jeff Bortner (T)		Division / Group Supervisor		Linda Gibson	
Operations Chief (Plans)				Branch Director		Roger Goldman	
Safety Officer		Matt Broyles / Eric Brown		Air Attack Supervisor		Jamie Lilienthal	
6. Resources Assigned this Period							
	Strike Team / Task Force / Resource Designator	Leader	Number Persons	Tentative Last Work Day	Drop Off Pt / Time	Pick Up Pt / Time	
1.	O-179 TFLD	Charlie Humbert	1	7/9	Camp 4 Spike	Camp 4 Spike	
2.	**O-249 TFLD (T)	Mark Harper	1	7/9	ICP	ICP	
3.							
4.	**C-18 CR2I Colville	Jacob Morse	21	7/6	Camp 4 Spike	Camp 4 Spike	
5.	**C-19 CR2I Cle Elum RD	Cris Machado	18	7/8	ICP	ICP	
6.	C-23 CR2I SRV1	Jaime Medrano	23	7/11	ICP	ICP	
7.	C-29 CRW1 Baker River IHC	Gary Chicks	21	7/11	Camp 4 Spike	Camp 4 Spike	
8.							
9.	**E-193 ENG5 WA-SES 4501	Connor Rupert	4	7/15	ICP	ICP	
10.							
11.	E-73 WTS1 Strand Tenders	Wade Strand	1	7/11	Camp 4 Spike	Camp 4 Spike	
12.	E-74 WTS2 MVP Team	Dale Conrad	1	7/12	ICP	ICP	
13.	E-75 WTS2 David Rains	Ron Laymance	1	7/17	ICP	ICP	
14.	E-78 WTS2 King Hydroseeding	Don Warden	1	7/10	Camp 4 Spike	Camp 4 Spike	
15.	E-156 WTS2 King Hydroseeding	Wes Bodenhamer	1	7/8	ICP	ICP	
16.							
17.	O-43 REMS1	Ray Storm	5	7/9	Camp 4 Spike	Camp 4 Spike	
18.	O-358 MEDIC 11	Savanah Mclaughlin	1	7/16	ICP	ICP	
19.							
20.	O-345 SOF2	Todd Mott	1	7/14	Camp 4 Spike	Camp 4 Spike	
21.							
22.							
23.	E-18, E-93, E-94, E-148, E-149 UTV						
24.							
25.	TBD:						
26.							
7. Control Operations Task: Identify and make necessary improvements to the control line and minimize impacts to the 8200 Road with road watering operations. Purpose: To establish a barrier to fire to the east of Safety Harbor Creek. End state: Control line anchored from South Navaree CG to Lake Chelan.							
8. Special Instructions <ul style="list-style-type: none"> • Ensure hazard mitigations and IWI protocols are in place before taking action. • ** Denotes available for Initial Attack 							
9. Division / Group Communication Summary							
Function	Frequency	System	Channel	Function	Frequency	System	Channel
Command Repeater	See Comm Plan			Command	See Comm. Plan		
TAC				Air To Ground	See Comm. Plan		
Prepared by (Resource Unit Leader): Gary Duranceau			Approved by (Planning Section Chief): Mike Crawford			Date 7/3/24	Time 1900

DIVISION ASSIGNMENT LIST			1. Branch V		2. Division / Group Contingency/Roads			Page 1 of 2		
3. Incident Name Pioneer			4. Operational Period Date: 07/04/2024 Time: 0700-2100							
5. Operations Personnel										
Operations Chief		Jon Larson / Jeff Bortner (T)		Division / Group Supervisor		Jennifer Harris / Eric Metzger (T)				
Operations Chief (Plans)				Branch Director		Roger Goldman				
Safety Officer		Matt Broyles / Eric Brown		Air Attack Supervisor		Jamie Lilienthal				
6. Resources Assigned this Period										
Strike Team / Task Force / Resource Designator		Leader		Number Persons	Tentative Last Work Day	Drop Off Pt / Time		Pick Up Pt / Time		
1.	**O-239 TFLD		Kory Garrie		1	7/9	ICP		ICP	
2.	O-245 TFLD		Noah Daniels		1	7/10	ICP		ICP	
3.	**O-257 TFLD (T)		Craig McDonald		1	7/9	ICP		ICP	
4.										
5.	O-241 HEQB		Jason Green		1	7/9	ICP		ICP	
6.	O-242 HEQB		Travis Parker		1	7/9	ICP		ICP	
7.	O-243 HEQB		Everardo Santillan		1	7/9	ICP		ICP	
8.	O-330 HEQB		Asa Ray		1	7/6	ICP		ICP	
9.	O-337 HEQB (T)		Brandon Humpherys		1	7/6	ICP		ICP	
10.										
11.	**E-192 ENG5 WA-SES E4406		Seth Reynolds		4	7/15	ICP		ICP	
12.										
13.	E-83 WTS2 King Hydroseeding		Joe Ivie		1	7/11	ICP		ICP	
14.	E-157 WTS2 Pine Mountain Exc.		Bob Goss		1	7/8	ICP		ICP	
15.	E-172 WTS2 Upper Valley		Joseph Schoenmakers		1	7/12	ICP		ICP	
16.	E-173 WTS2 Ridgetop Iron		Tim Whitehurst		1	7/12	ICP		ICP	
17.	E-174 WTS2 Upper Valley		Jim Smith		1	7/12	ICP		ICP	
18.	E-178 WTS2 Northern Construction		Robert Hollandsworth		1	7/12	ICP		ICP	
19.	E-179 WTS2 King Hydroseeding		Cosmo Tan		1	7/13	ICP		ICP	
20.										
21.	E-154 SKG2 Western		Rick Lauman		2	7/8	ICP		ICP	
22.	E-155 SKG2 Mountain View		Shawn Beaman		2	7/8	ICP		ICP	
23.										
24.										
7. Control Operations										
Task: Implement control lines from H41 to DP76. Continue road maintenance on 4330 and 4010.										
Purpose: To protect critical values at risk.										
End state: To have established control lines in place that correspond to Pioneer Fire strategic plan.										
8. Special Instructions										
<ul style="list-style-type: none"> • Ensure hazard mitigations and IWI protocols are in place before taking action. • Contingency resources working DIV H: Do not draft from Gold Creek above DP-102 or from Black Canyon Creek. • Work with READS to maintain resource protection. • ** Denotes available for Initial Attack. 										
9. Division / Group Communication Summary										
Function	Frequency	System		Channel	Function	Frequency	System		Channel	
Command Repeater	See Comm Plan				Command	See Comm. Plan				
TAC					Air To Ground	See Comm. Plan				
Prepared by (Resource Unit Leader): Gary Duranceau				Approved by (Planning Section Chief): Mike Crawford			Date 7/3/24		Time 1900	

DIVISION ASSIGNMENT LIST				1. Branch V		2. Division / Group Contingency/Roads		Page 2 of 2	
3. Incident Name Pioneer				4. Operational Period Date: 07/04/2024 Time: 0700-2100					
5. Operations Personnel									
Operations Chief		Jon Larson / Jeff Bortner (T)			Division / Group Supervisor		Jennifer Harris / Eric Metzger (T)		
Operations Chief (Plans)					Branch Director		Roger Goldman		
Safety Officer		Matt Broyles / Eric Brown			Air Attack Supervisor		Jamie Lilienthal		
6. Resources Assigned this Period									
	Strike Team / Task Force / Resource Designator	Leader	Number Persons	Tentative Last Work Day	Drop Off Pt / Time	Pick Up Pt / Time			
25.	E-143 EXC2 Delange Enterprise	Pete Delange	2	7/5	ICP	ICP			
26.	E-69 FTRA Morris Forestry	Rudy Morris	1	7/14	ICP	ICP			
27.	E-151 MBM2 Dukes	Chris Boles	2	7/22	ICP	ICP			
28.	E-152 MBM2 Axios	Easton Anderson	2	7/18	ICP	ICP			
29.									
30.	O-76 MEDIC 5	Brian Linacre	1	7/7	ICP	ICP			
31.	O-271 MEDIC 7	Steve Drab	1	7/11	ICP	ICP			
32.									
33.	O-346 SOFR	David Zuares	1	7/14	ICP	ICP			
34.									
35.	E-19, E-44 UTV				ICP	ICP			
36.									
37.									
38.									
39.									
40.									
41.									
42.									
43.									
44.									
45.									
46.									
47.									
48.	TBD:								
49.									
7. Control Operations Task: Implement control lines from H41 to DP76. Continue road maintenance on 4330 and 4010. Purpose: To protect critical values at risk. End state: To have established control lines in place that correspond to Pioneer Fire strategic plan.									
8. Control Operations									
<ul style="list-style-type: none"> Ensure hazard mitigations and IWI protocols are in place before taking action. Contingency resources working DIV H: Do not draft from Gold Creek above DP-102 or from Black Canyon Creek. Work with READS to maintain resource protection. ** Denotes available for Initial Attack 									
9. Division / Group Communication Summary									
Function	Frequency	System	Channel	Function	Frequency	System	Channel		
Command Repeater	See Comm Plan			Command	See Comm. Plan				
TAC				Air To Ground	See Comm. Plan				
Prepared by (Resource Unit Leader): Gary Duranceau				Approved by (Planning Section Chief): Mike Crawford			Date: 7/3/24	Time: 1900	

TABING

DIVISION ASSIGNMENT LIST			1. Branch V		2. Division / Group Staging		
3. Incident Name Pioneer			4. Operational Period Date: 07/04/2024 Time: 0700-2100				
5. Operations Personnel							
Operations Chief		Jon Larson / Jeff Bortner (T)		Division / Group Supervisor		Jon Merager	
Operations Chief (Plans)				Branch Director		Roger Goldman	
Safety Officer		Matt Broyles / Eric Brown		Air Attack Supervisor		Jamie Lilienthal	
6. Resources Assigned this Period							
	Strike Team / Task Force / Resource Designator		Leader	Number Persons	Tentative Last Work Day	Drop Off Pt / Time	Pick Up Pt / Time
1.	E-92 DZR3 Batchelor Excavation		Jay Batchelder	2	7/14	ICP	ICP
2.	E-143 From CONT.			2	7/5		
3.							
4.							
5.							
6.							
7.							
8.							
9.							
10.							
11.							
12.							
13.							
14.							
15.							
16.							
17.							
18.							
19.							
20.							
21.							
22.							
23.							
24.							
25.							
26.							
7. Control Operations Task: Remain ready and available for divisions as needed. Purpose: To assist divisions as needed to complete missions as appropriate. End state: Support suppression efforts as needed to project communities.							
8. Special Instructions							
9. Division / Group Communication Summary							
Function	Frequency	System	Channel	Function	Frequency	System	Channel
Command Repeater	See Comm Plan			Command	See Comm. Plan		
TAC				Air To Ground	See Comm. Plan		
Prepared by (Resource Unit Leader): Gary Duranceau			Approved by (Planning Section Chief): Mike Crawford			Date: 7/3/24	Time: 1900

DIVISION ASSIGNMENT LIST		1. Branch	2. Division / Group Boat				
3. Incident Name Pioneer		4. Operational Period Date: 07/04/2024				Time: 0700-2100	
5. Operations Personnel							
Operations Chief	Jon Larson / Jeff Bortner (T)		Division / Group Supervisor	Nate Crawford / Seth Ellis (T)			
Operations Chief (Plans)			Branch Director				
Safety Officer	Matt Broyles / Eric Brown		Air Attack Supervisor	Jamie Lilienthal			
6. Resources Assigned this Period							
	Strike Team / Task Force / Resource Designator	Leader	Number Persons	Tentative Last Work Day	Drop Off Pt / Time	Pick Up Pt / Time	
1.	O-342 TFLD	Mike Hill	1	7/10	Lucerne ICP	Lucerne ICP	
2.	O-248 TFLD (T)	Jason Ward	1	7/9	Lucerne	Lucerne	
3.	O-263 TFLD (T)	Aaron Pedersen	1	7/12	ICP	ICP	
4.	O-369 TFLD (T)	Katy Giddings	1	7/15	ICP	ICP	
5.							
6.	O-331 HEQB	Brandon Reed	1	7/15	Lucerne	Lucerne	
7.	O-332 HEQB	Eric Weinke	1	7/15	Lucerne	Lucerne	
8.	O-354 HEQB	Logan Pike	1	7/16	Lucerne	Lucerne	
9.	O-361 HEQB (T)	Thomas Dowdy	1	7/16	Lucerne	Lucerne	
10.	O-368 HEQB (T)	Cole Bingham	1	7/16	Lucerne	Lucerne	
11.							
12.	E-1 TBOT WA-NCP NPS	Sonja Shaw	1	*CWN	Stehekin	Stehekin	
13.	E-3 TBOT Chelan Co. F&R#7	Brandon Asher	2	*O/S	Lucerne	Lucerne	
14.	E-12 TBOT WA-OWF Chelan RD	Dick Gordon	1	*M-Sa	FS Dock	FS Dock	
15.	E-43 TBOT Llama Boat	Gayle Thomas	1	*O/S	FS Dock	FS Dock	
16.	E-91 TBOT DNR Mud Puppy	Ben Kilfoil	1	7/13	Lucerne	Lucerne	
17.	E-120 TBOT Pilgram	Justin Gavin	1	7/11	FS Dock	FS Dock	
18.	E-121 TBOT Brinnon Fire	Christopher Dolan	2	7/12	Lucerne	Lucerne	
19.	E-98 TBOT Chelan County Sheriffs	Rich Magnussen	2	*O/S	FS Dock	FS Dock	
20.							
21.	O-357 MEDIC 10	Sean Hendron	1	7/15	Lucerne	Lucerne	
22.	O-308 EMT 4	Justin Dominguez	1	7/12	Lucerne	Lucerne	
23.							
24.	TBD:						
25.							
7. Control Operations							
Task: Provide logistical needs for all fire activities on navigable waters.							
Purpose: Adequately support the needs of incident personnel in areas not accessible by roads.							
End state: Deliver supplies and personnel providing a timely, safe and effective operation.							
8. Special Instructions							
<ul style="list-style-type: none"> Follow instructions in IAP for requesting Ferry Tickets. All emergency medical requests for boats go through Pioneer Communications. * O/S – Operator Swaps As Needed, *CWN – Call When Needed, *M-Sa – Operator takes every Sunday off 							
9. Division / Group Communication Summary							
Function	Frequency	System	Channel	Function	Frequency	System	Channel
Command Repeater	See Comm Plan			Command	See Comm. Plan		
TAC				Air To Ground	See Comm. Plan		
Prepared by (Resource Unit Leader): Gary Duranceau			Approved by (Planning Section Chief): Mike Crawford		Date: 7/3/24	Time: 1900	

AIR OPERATIONS SUMMARY ICS-220

Incident Name / Number Pioneer / WA-SES-000173	Sunrise 05:08	Sunset 21:02	Airport S70	Pumpkin 21:32	Date Prepared 7/3/2024	Prepared By Mark Hocken - AOB
General Remarks, Safety Notes, Hazards, Air Operations Special Equipment, etc.:					Operational Period - Date 7/4/2024	Operational Period - Time 0700-2100
<p>*Order All Aircraft over Command to Helibase.</p> <p>*Sanitize Buckets before changing water sources.</p> <p>*Clear drop arealine before initiating drop sequence.</p> <p>*Be mindful of all overhead and environmental hazards while working with aircraft.</p> <p>*All GPS coordinates to be collected in Degrees and Decimal Minutes (DMM)</p> <p>*** WINDS: return to helibase if winds become unmanageable.</p> <p>*Aviation daily cost to: 2024.pioneer.finance@firenet.gov</p> <p>*Aviation daily cost to: pioneerhelibase2024@gmail.com</p>						

Incident Frequencies	RX	Tone	TX	Tone	AM/FM	Position	Name	Phone	EQUIPMENT/SUPPLIES
Air to Air Primary (A-8)	123.4000		123.4000		AM	AOBD (Planning)	Mark Hocken	(541) 261-1085	Commo Trailer (Pioneer)
Air to Air Secondary (A-9)	118.2750		118.2750		AM	AOBD (Field) (Valley HB)	Ted Hass	(541) 646-1318	Hand Wash Station (Pioneer)
A/G Pri Tactical (A-10)	169.1500		169.1500		FM	ASGS	Dave Moore	(513) 616-9192	Water Tender (Pioneer)
A/G Sec Operational (A-11)	168.4000		168.4000		FM	ASGS(t)	Jerry Rule	(253) 548-7711	Water Tender (Pioneer)
A/G 3 (TOLC)	166.6125		166.6125		FM	HEBM Pioneer	Lance Jorg	(971) 291-7443	Commo Trailer (Valley)
DECK	163.1000		163.1000		FM	HEBM(t) Pioneer	Anika Peila	(406) 366-0938	Water Tender (Valley)
COMMAND						HEBM Valley	Will Foster	(970) 218-5447	
AIR GUARD	168.6250		168.6250	110.9	FM	HEBM(t) Valley	Randy McIandress	(509) 668-7243	
VMED 29	155.3475	156.7	155.3475	156.7	FM	ATGS/HLCO	Willow Merritt	(503) 250-4597	
						HLCO t	Jamie Lilienthal	(541) 529-9492	
						Short Haul, MOCA, 125CL	Tim Beck	(520) 236-1551	
						UAS	John "JP" Postlewaitte	(208) 830-4436	
						UAS Baker River	Marshall Wallace	(509) 670-6365	
						CWICC	Lance Barajas	(520) 576-4520	
						UAO	Aircraft Desk	(509) 884-3473 x2	
							Cory Dolberry	(509) 668-2801	

HELICOPTERS - Assigned											
FAA #	TYPE	Make/Model	Helibase	Start	Avail	Remarks	FAA #	TYPE	Make/Model	Avail	Remarks
HB-16FH (A-22)	1	UH-60	Valley	0800	0900	BKT/LL	H-205TK	2	Bell 205A	0800	**Unavailable**
HB-161KA (A-24)	1	K-1200	Valley	0800	0900	BKT/LL					
HB-344RA (A-45)	1	CH-47D	Valley	0800	0900	BKT/LL lend/lease to					
H-527 (H-811KA)	2	Bell 212HP	Chelan	0800	0900	BKT/LL					
H-669H (A-98)	2	Bell 205 A1 ++	Chelan	0800	0900	BKT/LL					
H-234BH (A-99)	3	AS-350B3	Chelan	0800	0900	Recon/BKT/Paramedic					
H-544AS (A-60)	3	AS-350B3	Chelan	0800	0900	HLCO/Recon					
H-407RL (A-1)	3	Bell 407	Chelan	0800	0900	**Unavailable**					
H-125CL	3	AS-350B3e	WIEN	0800	0900	Short Haul, Recon					

HELICOPTERS - GACC Prepo and Lend/lease													
Call Sign	Type	Make/Model	Base	Start	Avail	Remarks	FAA #	Call Sign	Make/Model	Base	Start	Avail	Remarks
UR-31	3	Altax	Luceme	0600	2200	IR/PSD							
UR-45 Baker River HS	4	Anafi	DIV S	0600	2200	IR	H-544AS (A-60)	4AS	AS350B3	Chelan	0800	0900	Assigned HLCO
							N-197GB	617	Commander	WIEN	0900	1000	Wenatchee IA (not assigned)

1. Incident Name:		2. Date/Time Prepared:		3. Operational Period:						
PIONEER		Date: 07/03/2024	Time: 1600	Date/Time From: 07/04/2024	0600	Date/Time To: 07/05/2024	0600			
4. Basic Radio Channel Use:										
Zone Group	Ch #	Function	Channel Name/Trunked Radio	Assignment	RX Freq	RX Tone/NAC	TX Freq	TX Tone/NAC	Mode (A, D, or M)	Remarks
	1	TACTICAL	TAC 1	DIV A & S	168.0500	123.0	168.0500	123.0	A	
	2	TACTICAL	TAC 2	DIV D	168.2000	123.0	168.2000	123.0	A	
	3	TACTICAL	TAC 3	DIV Z	168.6000	123.0	168.6000	123.0	A	
	4	TACTICAL	TAC 4	DIV H / CONT	166.7250	123.0	166.7250	123.0	A	
	5	TACTICAL	TAC 5	ROADS	166.7750	123.0	166.7750	123.0	A	
	6	TACTICAL	TAC 6	BOAT	168.2500	123.0	168.2500	123.0	A	
	7	COMMAND	CMD 7	ALL	168.4750	123.0	165.4000	123.0	A	CHELAN BUTTE
	8	COMMAND	CMD 8	ALL	169.5375	123.0	164.7125	123.0	A	OLD MAID MT
	9	COMMAND	CMD 9	ALL	170.4500	123.0	168.1000	123.0	A	MOORE MT
	10	COMMAND	CMD 10	ALL	170.0125	123.0	165.2500	123.0	A	SLIDE RIDGE
	11	COMMAND	CMD 11	ALL	170.4125	123.0	165.9625	123.0	A	FOX PEAK
	12	TACTICAL	A/G PRI	ALL DIVS	169.1500	000.0	169.1500	000.0	A	
	13	AIR TO GROUND	A/G SEC	ALL DIVS	168.4000	000.0	168.4000	000.0	A	
	14	AIR TO GROUND	A/G 3	ALL DIVS	166.6125	000.0	166.6125	000.0	A	TAKE OFF LANDING CHANNEL
	15	AIR TO GROUND	VMED 29	ALL DIVS	155.3475	156.7	155.3475	156.7	A	AIR EMS COORDINATION
	16	AIR TO GROUND	AIRGUARD	ALL DIVS	168.6250	000.0	168.6250	110.9	A	EMERGENCY AIRCRAFT CONTACT
5. Special Instructions: 24 hour staffing: PIONEER COMMUNICATIONS PHONE NUMBER: (208) 891-7948 / CURRENT CLONE "PIE 6-21"										
6. Prepared By COML				Name: SETH BAUMGARTEN				Signature: <i>Seth Baumgarten</i>		
ICS 205				IAP Page				Date/Time: 07/03/24 1600		

1. Incident Name:		2. Date/Time Prepared:		3. Operational Period:							
PIONEER Branch IV & V		Date: 07/03/2024 Time: 1600	Date/Time From: 07/04/2024 0600	Date/Time To: 07/05/2024 0600							
4. Basic Radio Channel Use:											
Zone Group	Ch #	Function	Channel Name/Trunked Radio	Assignment	RX Freq	RX Tone/NAC	TX Freq	TX Tone/NAC	Mode (A,D, or M)	Remarks	
	1	TACTICAL	TAC 1	DIV A & S	168.0500	123.0	168.0500	123.0	A		
	2	TACTICAL	TAC 2	DIV D	168.2000	123.0	168.2000	123.0	A		
	3	TACTICAL	TAC 3	DIV Z	168.6000	123.0	168.6000	123.0	A		
	4	TACTICAL	TAC 4	DIV H / CONT	166.7250	123.0	166.7250	123.0	A		
	5	TACTICAL	TAC 5	ROADS	166.7750	123.0	166.7750	123.0	A		
	6	TACTICAL	TAC 6	BOAT	168.2500	123.0	168.2500	123.0	A		
	7	TACTICAL	A/G PRI	ALL DIVS	169.1500	000.0	169.1500	000.0	A		
	8	AIR TO GROUND	A/G SEC	ALL DIVS	168.4000	000.0	168.4000	000.0	A		
	9	AIR TO GROUND	A/G 3	ALL DIVS	166.6125	000.0	166.6125	000.0	A		
	10	COMMAND	CMD 10	ALL	170.0125	123.0	165.2500	123.0	A	SLIDE RIDGE	
	11	COMMAND	CMD 11	ALL	170.4125	123.0	165.9625	123.0	A	FOX PEAK	
	12	COMMAND	CMD 12	ALL	170.6875	123.0	166.5750	123.0	A	GOAT MOUNTAIN	
	13	LOCAL RPTR	GOAT	ALL	172.3500	146.2	165.0125	118.8	A	GOAT MOUNTAIN	
	14	LOCAL RPTR	MCLUR	ALL	172.3500	146.2	165.0125	103.5	A	McCLURE MTN	
	15	AIR TO GROUND	VMED 29	ALL DIVS	155.3475	156.7	155.3475	156.7	A	AIR EMS COORDINATION	
	16	AIR TO GROUND	AIRGUARD	ALL DIVS	168.6250	000.0	168.6250	110.9	A	EMERGENCY AIRCRAFT CONTACT	
5. Special Instructions: 24 hour staffing: PIONEER COMMUNICATIONS PHONE NUMBER: (208) 891-7948 / CURRENT CLONE "IV"											
6. Prepared By COM1				Name: SETH BAUMGARTEN				Signature: <i>Seth Baumgarten</i>			
ICS 205				IAP Page				Date/Time: 7/3/24 1600			

1. Incident Name:		2. Date/Time Prepared:		3. Operational Period:						
PIONEER IA N Chelan		Date: 07/03/2024 Time: 1600	Date/Time From: 07/04/2024 0600	Date/Time To: 07/05/2024 0600						
4. Basic Radio Channel Use:										
Zone Group	Ch #	Function	Channel Name/Trunked Radio	Assignment	RX Freq	RX Tone/NAC	TX Freq	TX Tone/NAC	Mode (A,D, or M)	Remarks
	1	LOCAL DISPATCH	Fire 1 Rp		154.4300	110.9	153.8900	D051	A	
	2	COMMAND	North Corn Rp		155.3550	100.0	150.7900	100.0	A	
	3	TACTICAL	Goat Tac Rp		159.0675	110.9	153.8000	100.0	A	GOAT MNT
	4	TACTICAL	Orange		154.2650	107.2	154.2650	107.2	A	
	5	TACTICAL	Black		154.3400	151.4	154.3400	151.4	A	
	6	TACTICAL	DNR Common		151.4150	103.5	151.4150	103.5	A	
	7	LOCAL RPTR	DNR Chelan Rp		159.2250	156.7	151.4750	156.7	A	CHELAN BUTTE
	8	AIR TO GROUND	DNR A/G 1		159.2700	103.5	159.2700	103.5	A	
	9	LOCAL RPTR	Butte Tac Rp		155.1225	192.8	159.0675	162.2	A	CHELAN BUTTE
	10	TACTICAL	FS Win Tac		167.5500	000.0	167.5500	000.0	A	
	11	LOCAL RPTR	FS Goat Rp		169.8750	146.2	172.3500	118.8	A	GOAT MNT
	12	LOCAL RPTR	FS Slide Rp		173.0500	146.2	164.9125	141.3	A	SLIDE RIDGE
	13	AIR TO GROUND	FS A/G 40		167.4500	000.0	167.4500	000.0	A	
	14	TACTICAL	FS TAC		168.2000	000.0	168.2000	000.0	A	
	15	LOCAL RPTR	FS BADGER Rp		173.0500	146.2	164.9125	127.3	A	BADGER MNT
	16	TACTICAL	RED NET		153.8300	000.0	153.8300	000.0	A	
5. Special Instructions: 24 hour staffing: PIONEER COMMUNICATIONS PHONE NUMBER: (208) 891-7948 / CURRENT CLONE "IA N CHELAN"										
6. Prepared By COM1				Name: SETH BAUMGARTEN				Signature: <i>Seth Baumgarten</i>		
ICS 205				IAP Page				Date/Time: 7/3/24 1600		

HEALTH AND SAFETY MESSAGE

SAFETY starts with *YOU*

We are ALL accountable for SAFE behaviors

INCIDENT: Pioneer Fire	DATE: July 4, 2024	SHIFT: Day
Topic: Medical Support and Medical Unit Visitation		
<p style="text-align: center;">Hazards:</p> <p><u>Any</u> health or medical issue-blister, cuts, scrapes- on up to major injury and trauma, and medical evacuation and advanced life support needs.</p> <p style="text-align: center;">Mitigation:</p> <p>Northwest Team 7 prides itself on doing our absolute best to <i>Take Care of the Firefighter</i> – You. – YES- YOU! We have a well developed and continually updated set of procedures and staffing for addressing your medical and health needs. There are several ways to access this help: Notify your supervisor that you have a health or medical issue or a medical emergency, or notify a safety officer, or a line medic. All of these people are here to help you, and will activate the plans necessary to get you the help you need day or night. It is not an inconvenience or making trouble for us to do this. We plan for it. It is part of our job and we want to help YOU.</p> <p>You can also activate emergency help by calling communications on the radio command channel or by calling the 24-hour emergency number by phone (208) 891-7948. This number is also on the front page of the IAP. <u>PUT IT IN YOUR PHONE.</u></p> <p>We have a well-staffed and stocked medical unit right here in the ICP and Stehekin. Come in early if you have a developing issue- blister, stomach problems, bee stings, etc ...</p> <p>If you need more treatment that the Medical Unit can provide the MEDL may send you to a higher care facility for assessment or treatment. There is a hospital in Chelan and if you get sent there a “maroon shirt” is prepared to go there with you, or meet you there to support you, help with any necessary paperwork, and communicate any needs or issues back to ICP.</p> <p>Don’t skip or delay treatment to save a shift or part of a shift worth of pay, and have a condition develop that causes you to miss several shifts or part of the remaining season.</p> <p><i>“We are here to work but stepping over dollars to pick up dimes is not wise”- - Safety Eric Brown</i></p>		

Take care of each other- and make good decisions today

Incident Safety Officers: Matt Broyles, Eric Brown



HUMAN RESOURCES MESSAGE
PIONEER FIRE
Happy Fourth of July
July 4, 2024

July 4th is a day to remember the sacrifices made by those who fought for American independence and to celebrate the freedoms we enjoy today.

Firefighters demonstrate remarkable courage and dedication, being away from friends and family to fight wildfire and protect communities on the 4th of July holiday. Your sacrifices and bravery are truly commendable.

Though it's hard to believe, Lady Liberty is celebrating 248 years of freedom this Fourth of July. But, of course, we must say, she doesn't look a day over 200.

Training

I am also the Training Specialist assigned to the fire. If you are a trainee and you have an open Task Book bring me your Red Card and your Task Book and I will document you on the fire.

Margaret Dietrich - HRSP/TNSP 360-701-3154
mvdietrich2@gmail.com

Rhonda Marchand - Human Resource Specialist T

FINANCE MESSAGE

Finance Email: 2024.pioneer.finance@firenet.gov

Finance Phone: 484-501-1835

This incident requires electronic documentation. Please email your time to the address above. Scanned PDF's please, no .JPG's. Feel free to call finance for help if needed. Scanners are also available at ICP.

Required Documents

Overhead, Agency Crews & Cooperators

Finance docs needed: Resource Order, Manifest, Cooperative Agreement, Casual Hire Form w/ECI# (as applicable)

Daily: CTRs, Shift Tickets

CTRs should be named as:

CTR_RO#_YYMMDD-DD
(Ex: CTR_O235_240605-07)

Electronic CTR available! Use QR code on front cover

Contract Resources

Finance docs needed: Resource Order, Manifest, Full Contract/Agreement, Certifications *(if required)* Pre-Inspection

Daily: CTRs, Shift Tickets, receipts (claims, etc.)

NOTE: Document travel times and odometer readings

Shift Tickets should be named as:

ST_RO#_YYMMDD-DD
(Ex: ST_E5_240623-27)

Electronic shift ticket available! Use QR code on front cover

Demob: Signed OF-288; Signed OF-286

Demob: Contractor Evaluations, Shift Tickets, receipt(s) for Addition/Deductions, Post-Inspection, Signed OF-286

"H-Pay"- Entitlement to Hazardous Pay Differential (5 CFR 550.904) - Hazard pay MUST be supported by a justification. If justification is not provided, you chance losing your entitlement.

Please call finance regarding issues with your time:

No one on List today, any questions for Finance, please email us.
Thank You.

Incident Name: **Pioneer**

Incident Number: **WA-SES-000173**

Financial codes:

WA DNR – 221-LDW

DOI – RZ79

USDA – PNRZ79 (1522)

Please make sure you check in using QR code on the front of the IAP and then email your time daily.

THANK YOU!!

Resource Advice

Lead READ: Brigitte Ranne 509-663-6118, brigitte.ranne@usda.gov
REAF: Hector Rodriguez 509-393-5379, Hector.Rodriguez3@usda.gov
REAF: Eireann Pederson 360-854-8197, eireann.pederson@usda.gov
REAF: Carrissa Camenson 360-899-7147, carissa.camenson@usda.gov



Resource Guidelines

MIST for Spike Camp and Lucerne Forward Operating Base Management

- Employ minimum impact suppression tactics (MIST) where feasible, especially in remote or sensitive areas.
- If spike camps are necessary, use existing, or previously impacted campsites where available. If existing campsites are not available; use your local resource advisor to help identify the most resilient sites in rocky or sandy soils. Avoid camping in wet meadows, along streams, or on lake shores.
- Store food properly so that it is not accessible to wildlife. Consider hanging food in trees at least 15 feet off the ground and 5 feet from the trunk of the tree, or store food in sealable containers. Store food away from the campsite (300 feet is ideal) to reduce the risk of human and bear (and rodent!) conflicts.
- Do not let garbage and food scraps accumulate in camp. All garbage and food scraps need to be removed from the camp ASAP and before leaving the site.
- Minimize disturbance to land in preparing bedding and campfire sites. Do not clear vegetation, trench, or excavate a flat spot to create bedding sites.
- Do not use nails in trees. Don't construct camp furniture.
- If a campfire is built for warmth in the evening, build either a pit or mound fire. Use dead and down firewood. Use small diameter wood that burns down more cleanly. Don't burn plastics or aluminum - pack it out with the rest of the camp garbage.
- In small spike camp situations (not Lucerne), individuals should use the "cat-hole" method of disposing of human waste. Toilet seats should be located a minimum of 200 feet from water sources. Holes should be dug 6-8 inches deep.
- In large or long term spike the camps use helicopters, boats, or pack stock to deliver portable backcountry latrines and remove human waste if necessary. If the camp does not have adequate pack, boat, or air support for human waste management, establish community latrines well away from water sources and common areas. Use human waste bags, if necessary

Dipping and Drafting

- No cross-dipping between water bodies. All buckets or snorkels should be cleaned, inspected, and dried in the sun if they must be used between lakes. Dipping in small lakes must be pre-approved by the READ or AA.
- When drafting, use already disturbed areas for stream access (road crossings, dispersed campsites) to reduce the need for riparian vegetation clearing.
- Use screens (3/32" inch) for all pumping operations.
- Use containment pads and basins under pumps and fuel cans. Ensure a spill kit is present with every operating pump.

Invasive Species

- The fire is burning within an infestation of common crupina, a WA State Class A Noxious weed. Prevent spread of crupina off site – plan to wash hose and other equipment. Request fire fighters brush boots before boarding boat or before entering National Park Service Land.
- Inspect slings and remove all plant/soil material prior to use.
- Ensure all camps, staging areas, helispots and cargo areas are free of invasive plants to prevent spread to un-infested areas.
- Weed wash all vehicles, including boats, when they arrive to the incident and when demobed.

Fisheries /Aquatic Recommendations

- If trees must be felled in riparian areas for suppression or safety reasons, fell them toward streams where possible and minimize bucking where possible.
- Non-mechanized suppression activities are recommended within Riparian Reserves (150-300 ft from stream channel). For example, consider hand lines instead of dozer lines when feasible.

Retardant Use

- Retardant avoidance areas are present in the fire suppression area for both aquatic and terrestrial species.
- Track all retardant drops – locations and amounts.
- Report all mis-applications ASAP to READ. Monitoring and reporting of misapplications is required.

Wet Meadows

- No line or other disturbance in wet meadows in the Summer Blossom area (east of South Navarre campground above and below the 8200 road) and at Coyote and Poison Springs at the headwaters of their respective creeks.

Dry Meadows

- Minimize disturbance from staging and parking areas in dry meadows. These areas recovery slowly and are vulnerable to invasive plant infestation.

White Bark Pine

- Avoid cutting white bark pine whenever possible. Needles of 5 keep it alive! Ask READ for help with ID.

Burnout operations

- Plan to protect whitebark pine of all ages and mature cold and moist forest during burnouts. READ consultation and line officer approval is required for burn plans that include these forest types.
- During burnouts modify firing to retain large trees, large snags and large down wood in forests whenever possible.
- Minimize total acres burned in burnouts.
- Incorporate typical resource protection measures used in RX burning whenever it is safe and practical to do so (such as retention of green islands in moist areas).
- Provide a map of areas that were burned as part of the burnout operation (for use in emergency consultation).
- If cultural resources are discovered during suppression activities, leave on site and notify READ.

LOGISTICS NOTES

Pioneer Fire ICP

Breakfast 0530 – 0900
Lunch @ Refer Trailer – 0500 - 2100
Dinner 1800 -2100
Shower 0500 – 1200 & 1400 – 2200
Supply 0600 – 2200
Ground Support 0700 – 2100
Fuel Tender 0700 – 2100
Weed Wash 0700 – 1400 & 1600 – 2000

FOB Lucerne

Breakfast 0600 - 0900
Lunch – Pickup with Breakfast
Dinner 2030 – 2130
Shower 0500 – 1200 & 1400 – 2200
Supply 0600 – 2200

Ground Support Contact Numbers:

Casey Glade 435-704-4702 Joe Keady 541-733-6701

Ordering Information

Submit all orders on General Message Form 213 to the following email address.

2024.pioneer.ordering@firenet.gov

Ordering Manager Noe Reyes 484-501-1821

ICP Camping & Parking Under Maple Trees

The sticky oily substance dripping from the maple trees next to Main Street was determined to be insect residue, sometimes called "Honeydew". This substance is nontoxic and has the potential to damage cars and tents if not removed quickly. Avoid parking or camping under the maple trees to prevent potential damage.

Recycling Scorecard on Incident

Plastic Bottles	764-lbs	Aluminum Cans	220-lbs
Cardboard	10,192-lbs	Office Paper	742-lbs
Plastics 1 & 2	137-lbs	Glass	11-lbs
Batteries	236-lbs	Food Composting	9,601-lbs
Cooking Oil	227-gal	Food Donations	347-lbs
Trash	21,090-lbs	Recycling	24,066-lbs

Example GM (ICS213) for Boat Transportation

**** WHEN ARRANGING BOAT TRANSPORTATION USE THE FOLLOWING ****

Nathan Crawford, DIVS, 541-219-1374, Nathan_crawford@fws.gov

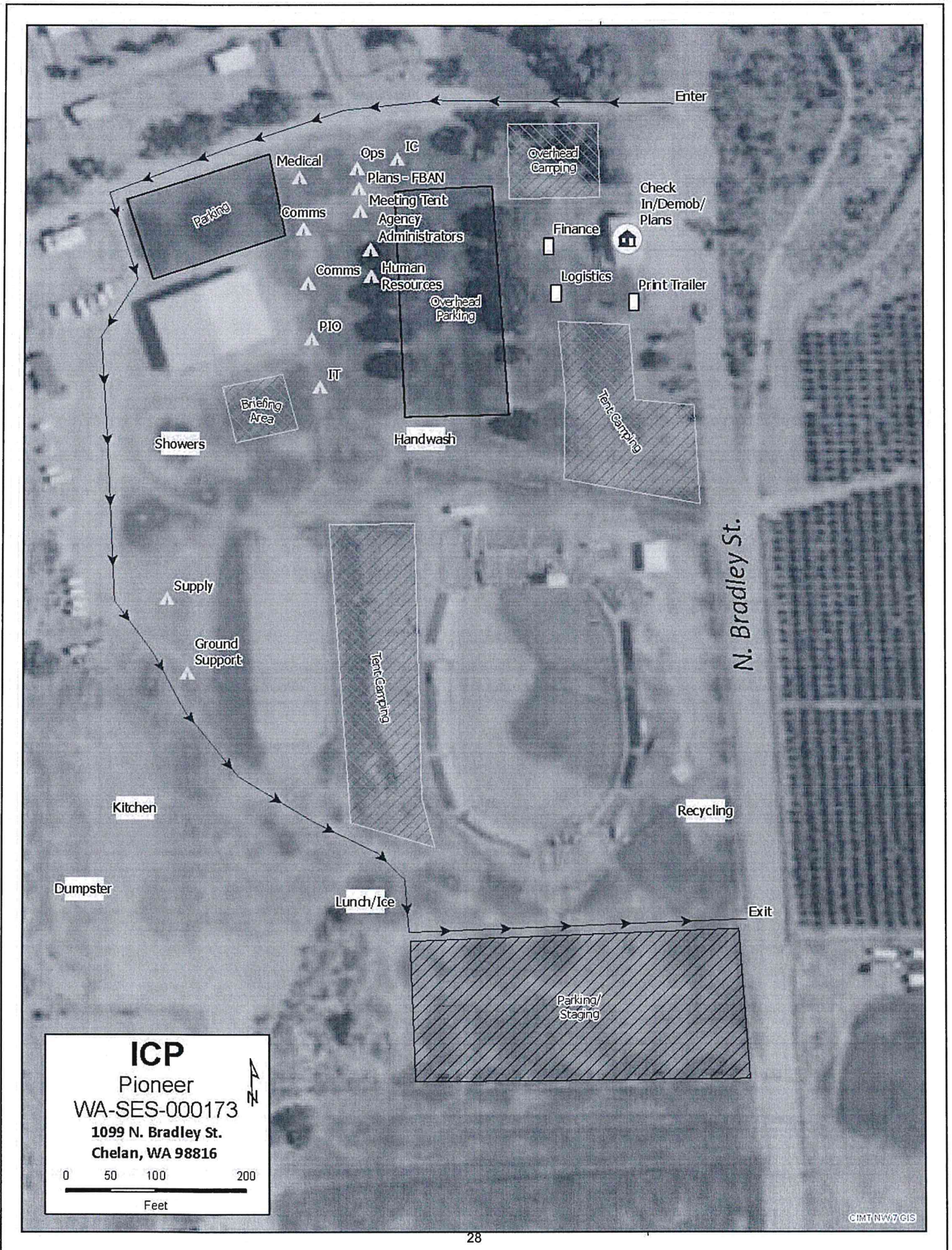
Seth Ellis, DIVS (T), 509-860-3290, seth.ellis453@gmail.com

GENERAL MESSAGE (ICS 213)

1. Incident Name (Optional): Pioneer Fire		
2. To (Name and Position): Nate Crawford DIVS/Seth Ellis- Boat DIVS(t)		
3. From (Name and Position):		
4. Subject: Ferry Tickets	5. Date:	6. Time
7. Message: <p style="text-align: center;">SAMPLE GENERAL MESSAGE FORM WITH REQUIRED INFORMATION</p> <p>O or C # _____</p> <p>Departure Date _____</p> <p>Ferry Ticket Departure Location (Chelan/Fields Point/Lucerne/Stehekin) _____</p> <p>Ferry Ticket Arrival Location (Chelan/Fields Point/Lucerne/Stehekin) _____</p> <p>Email address for confirmation _____</p> <p>* If unable to receive email, please note and tickets will be emailed to either your DIVS or the Boat Coordinator.*</p> <p>Phone #: _____</p> <p>FERRY TICKETS NEED TO BE SUBMITTED TO BOAT DIVS BY 1600 THE DAY PRIOR OF DESIRED DEPARTURE.</p> <p>IT IS PREFERRED FORMS ARE SUBMITTED 48 HRS PRIOR TO KNOWN AND SET LWD.</p>		
8. Approved by: Name: _____ Signature: _____ Position/Title: _____		
9. Reply:		
10. Replied by: Name: _____ Position/Title: _____ Signature: _____		
ICS 213	Date/Time: _____	

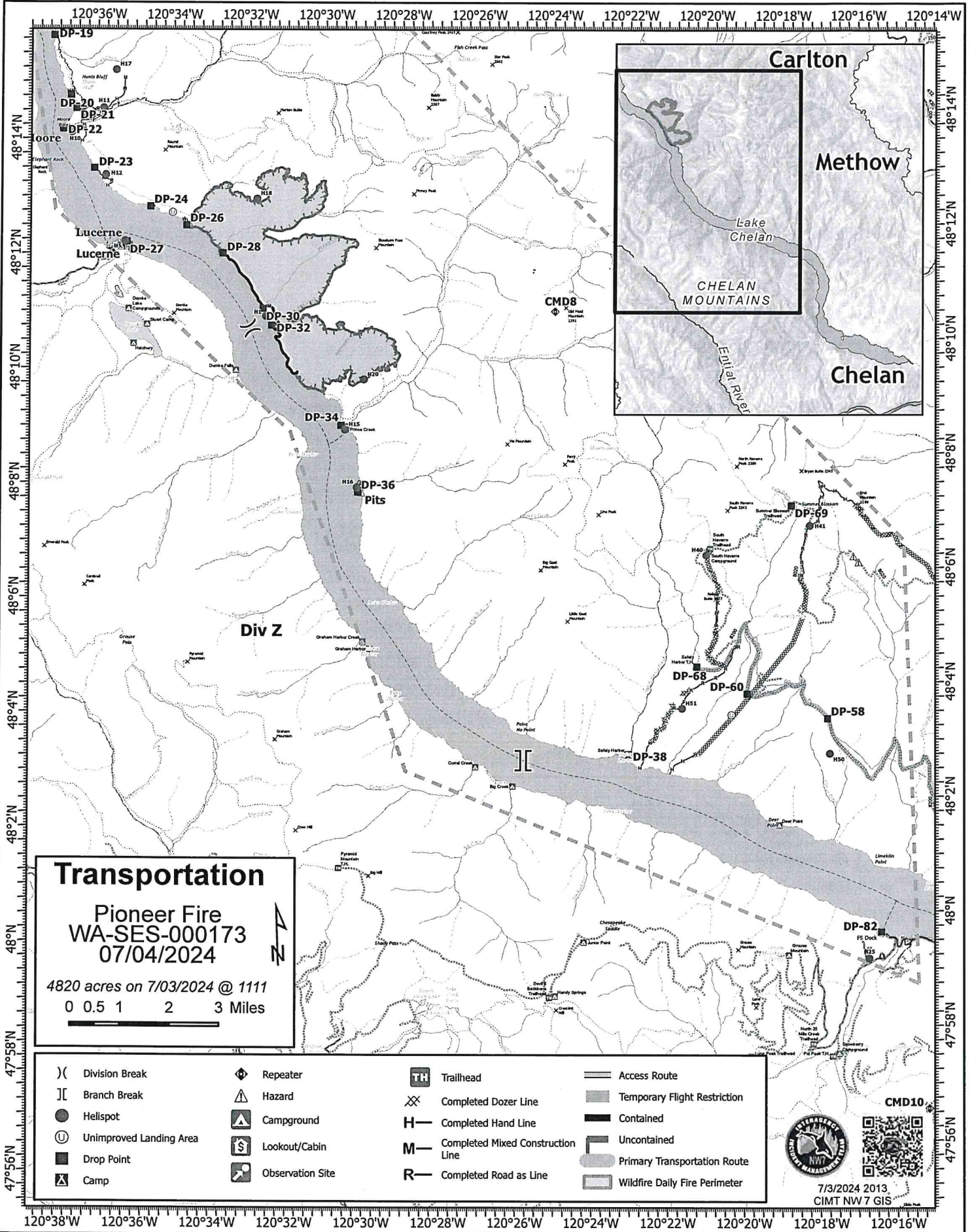
GENERAL MESSAGE (ICS 213)

1. Incident Name and Number: PIONEER		
2. To (Name and Position): ORDERING		
3. From (Name, Position and Phone): SMOKEY BEAR, PIO 555-123-1234		
4. Subject: REQUEST	5. Date: 06/29/24	6. Time: 1300
<p>7. Message:</p> <p>WOULD LIKE TO ORDER</p> <p>1 EA SHOVEL 1 PK GENERAL MESSAGES 1 BX PAPER TOWELS 2 ROLLS STRUCTURE WRAP TAPE (This is where you need to be specific. Research the item you want and recommend possible vendors, item number, especially if this is a unique item)</p> <p>NEED BY JULY 2, 2024 @ 1400. (You need to be realistic here. Plan on about 2-3) PLEASE DELIVER TO BLACK MOUNTAIN LOOKOUT</p> <p>**Make sure your contact info is somewhere on this form. Name, phone, or email..</p> <p>***For cache items you can expect delivery to the ICP Supply in 24 hours, or 48 if we're delivering.</p> <p>****For local purchase items we need 48-72 hours</p>		
8. Approved by: Name: _____ Signature: _____ Position/Title: _____		
9. Reply:		
10. Replied by: Name: _____ Position/Title: _____ Signature: _____		
ICS 213	Date/Time: _____	



ICP
 Pioneer
 WA-SES-000173
 1099 N. Bradley St.
 Chelan, WA 98816

0 50 100 200
 Feet



SHORT-HAUL OPERATIONS

CAPABILITIES

- During an operational Short-Haul the helicopter is capable of inserting Short-Haulers into an area with tight canopy cover and/or technical terrain.
- Haul line lengths range from 100 feet to 350 feet.
- Short hauler and/or medical gear can be delivered to the medical scene even if extraction by short-haul is not necessary.

ORDERING

- EMT or Medical Incident IC determines medical extraction is required.
- Follow local established procedures and/or Medical Incident Report (MIR) in the IRPG.
- Confirm aircraft type, call sign, estimated time of arrival and frequency.
- Give site selection information when ordering: hazards (i.e. ash, smoke, snags, aerial), tree height, terrain, and patient transport configuration (supine or seated position). Repeat hazards and give updated weather conditions as well as brief patient update to responding helicopter.

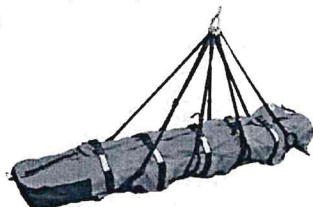
PROCESS: The helicopter will fly to the coordinates provided. They will make contact with ground personnel on scene with the patient using an identified air-to-ground frequency. The helicopter will complete a short-haul recon and size up, gather patient update information and then fly to a landing zone (LZ) to configure for short-haul operations. The helicopter will be monitoring the appropriate air-to-ground, air guard and victor frequencies. From this point, ground resources should only contact the helicopter in case of an emergency. During the insertion and extraction process ground personnel must be clear of the area.

ON SCENE – EXPECT THE FOLLOWING

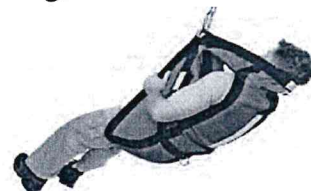
- 1 or 2 rescuers (at least one qualified as an EMT or higher)
- Backboard (if needed and not already on scene)
- All equipment necessary for patient extraction

The Patient Extraction Bag accommodates most backboards.

- A patient on a backboard, TRS, SKED or litter will be inserted into the



The Seat Harness is used for patients not requiring the use of a backboard.





Team 7 Hose Lay Kit		
Item	Amount	Amount
1 1/2 in. synthetic hose	1000 ft.	1000 ft.
1 in. synthetic hose	500 ft.	500 ft.
3/4 in. garden hose	500 ft.	500 ft.
1 1/2 in. gated wye	5 ea.	5 ea.
1 1/2 in. - 1 in. reducer	5 ea.	5 ea.
1 in. combination nozzle	5 ea.	5 ea.
1 in. - 3/4 in. reducer	5 ea.	5 ea.
3/4 in. valve, shutoff, ball	5 ea.	5 ea.
3/4 in. nozzle	5 ea.	5 ea.
3/4 in. gated wye	5 ea.	5 ea.

SPRINKLER KIT NFES # 1048		
Item	Amount	Amount
Sprinkler head w/ couplings	4 ea.	4 ea.
3/4 in. garden hose	250 ft.	250 ft.
1 1/2 x 1 1/2 x 1 tee	4 ea.	4 ea.
1 x 3/4 reducer	4 ea.	4 ea.
1 1/2 in. - 1 in. reducer	1 ea.	1 ea.
3/4 in. gated wye	2 ea.	2 ea.
3/4 in. valve, shutoff, ball	4 ea.	4 ea.
3/4 in. nozzle	1 ea.	1 ea.
3/4 in. pressure regulator	4 ea.	4 ea.
3/4 in. nozzle, plastic 60 GPM	1 ea.	1 ea.
10 in. adjustable wrench	1 ea.	1 ea.

LINE ORDER PROCESS

Line orders from the field should go through the Communication Unit via radio (primary) or 24-hour phone number shown on the cover of the IAP. All other supply requests should be submitted in person to the Supply Unit.

Team 7 Line Supply Order		Order #			
Date & Time Order Placed	Delivery To Location/time (Division, Drop Point, Heli Spot, Lat/Long)	Delivery Method (Driver, Heli, DWS to P/U)	Ordered by (name and Position)		
Order received in Communications (name & time)		Ground Contact			
Order received in Supply by (name & time)		Contact Freq.			
Order received in Transportation by (name & time)		Special Instructions/line length/ elevation			
Order received in Helibase by (name & time)					
Order shipped to line by (name & time)					
#	Item	Amount	#	Item	Amount
1	Meals #1842	MRE 12/Cs	33	Bath in a Bag, Large #0712	
2	Water #0048	5 gal cubies	34	Bath in a Bag, Small #0206	
3	Gatorade	24/Cs	35	Coffee Kit #0480	
4	Batteries, AA #0030	24/pg	36	Coffee 3lb Can	
5	Batteries, AAA #7471	24/pg	37	Folda-Tank 1500 gal #0664	
6	Gas Unleaded	5 gal	38	Pumpkin 3000 gal. #0568	
7	2 Cycle Oil #7724	5 gal mix	39	Backpack Pump #0909	
8	2 cycle Oil #3444	1 Gal mix	40	Mark III pump + Kit #0148	
9	Diesel	5 gal	41	Lightweight Pump + Kit #8606	
10	Bar Oil #1880	1 Gal	42	Volume Pump #1222	
11	Bar Oil #1869	1 Qt	43	Hose 1 1/2" #1239 100' lg	
12	Shovel #0171		44	Hose 1" #1238 100' lg	
13	Pulaski #0146		45	Hose 3/4" #1016 50' lg	
14	McLeod #0296		46	Reducer 1 1/2" to 1" #0010	
15	Combi #1180		47	Reducer 1" to 3/4" #0733	
16	Chainsaw Kit #0340		48	Gated "y" 1 1/2" #0231	
17	Drip Torch Empty #0241		49	Gated "y" 1" #0259	
18	Fussee #0105		50	Gated "y" 3/4" #0904	
19	Sleeping Pad #1566		51	In-line Tee 1 1/2" to 1" #0230	
20	Sleeping Bag #0022		52	Nozzle KK 1 1/2" #1082	
21	Fly Tent #0070		53	Nozzle KK 1" #1081	
22	Plastic Sheeting #0143		54	Nozzle 3/4" #0136	
23	Parachute Cord #0533		55	Nozzle, Forester 1" #0024	
24	Fiber Tape #0222		56	Sprinkler kit #1048	
25	Garbage Bags #0021		57		
26	Leadline 3000 lbs #0528		58		
27	Cargo Net 3000lb #0531		59	Team 7 Hose Lay Kit	
28	Swivel 3000lb #0526		60		
29	Slingable Bg 72 Gal Blivet #0426		61		
30	Foam 5 gal. #1145		62		
31	Toilet Paper #0142		63		
32			64		

Check In Message

- Please complete the virtual check-in process via the QR code on the front cover.
- You are not checked in until you provide the following:
 - 1) Red Cards
 - 2) Roster/Manifest
- Please email documents to: 2024.pioneer.checkin@firenet.gov

Any Questions:

Phone: 509-661-5372

Email: 2024.pioneer.checkin@firenet.gov

Demob Message

- Fliers complete the "Air Travel Request" via the QR code on the front cover 72 hours prior to flight date.
- Return supplies to the Cache.
- Return radios, antennas, etc., to Communications.
- All contract equipment and vehicles driven in fire area will need to do weed wash.
- Contact Finance about closing out your paperwork.
- Once the above items have been completed, SCAN the QR code on the front cover and complete the demob questions.

Any Questions:

Phone: 509-661-5376

Email: 2024.pioneer.demob@firenet.gov



Last Work Day / Demob Report

Incident: PIONEER US-WA-SES-000173

Questions call Jay at (509) 661-5376

Dembo 07/04

CREWS

CRWC C-5 CRWC - ANACONDA - CREW #1 - MOB #1

EQUIPMENT

DZR4 E-100 DZR4 - DOUGALS LOGGING INC - C05680
ENG6 E-117 ENG6 - E672 - WENATCHEE RIVER RD
GRD2 E-71 GRD2 - PETTET TRANSPORTATION INC. - V13451
GRD2 E-72 GRD2 - SCOTTS EXCAVATING & HAULING LLC - 405547
WTS2 E-180 WTS2 - KING HYDROSEEDING, INC. - 132635
WTS2 E-181 WTS2 - ARCHER MOUNTAIN ENTERPRISES LLC - 135248

OVERHEAD

DIVS O-251 MERRITT, AARON D
EMPF O-68 BOWER, JOEL ALBERT
FACL O-173 PREVOST, MICHAEL R
HECM O-121 CLAY, DEJON S
HEQB O-163 AHLRICHS, EMMA KATHERIN
SMOD O-147 SMOD - CA-LNP CREW76
SMOD O-148 SMOD - MODULE - SUPPRESSION - HVP - CREW 1
TFLD O-160 TURNER, BRIAN WAYNE
TFLD O-161 CHAMBERS, CAMERON DREW
THSP O-170 NEIDER, TONYA

LWD 07/04 ~ Demob 07/05

CREWS

CRW1 C-13 CRW1 - VALE IHC

OVERHEAD

EMPF O-67 LATHROP, ADAM MATTHEW
THSP O-200 RICE, TYLER
THSP O-204 JONES, RUSS

LWD 07/05 ~ Demob 07/06

EQUIPMENT

EXC2 E-143 EXC2 - DELANGE ENTERPRISES, INC. - L21334
GWT2 E-95 GWT2 - W W PUMPING SERVICE - 128831

OVERHEAD

ASGS O-102 MOORE JR, DAVID A
FMOD O-186 FMOD - FALLER MODULE - KINTNER TIMBER COMPANY LLC
RCDM O-205 EVERSALU, MARTIN LEE
STAM O-131 MERAGER, JONATHAN

1. Incident/Project Name			2. Operational Period				
Pioneer Fire			Date/Time: 07/04/24 0700-2100				
3. Ambulance Services							
Name	Complete Address	Phone	Advanced Life Support (ALS) Yes No				
Lake Chelan EMS	Chelan, WA	911	X				
Douglas/Okanagan County Fire	Brewster, WA	911	X				
Aero Methow EMS	Twisp, WA	911	X				
4. Air Ambulance Services							
Name	Phone/Channel	Frequency, Type of Aircraft & Capability					
Life Flight - Brewster	1-800-232-0911 911	VMED 29, Rotor, ALS, 24 hr					
Airlift NW - Wenatchee	1-800-426-2430 911	VMED 29, Rotor, ALS, 24 hr					
Medivac Ship	Command 7,8,9,10,11,12 (Linked)	VMED 29, Rotor, BLS, Daytime					
Mount Rainer Short Haul	Command 7,8,9,10,11,12 (Linked)	VMED 29, Rotor, BLS, Daytime, Short Haul					
Snohawk 10 - Snohomish	1-800-258-5990 911	VMED 29, Rotor, ALS, Daytime, Hoist					
Spokane County Hoist - Spokane	1-509-532-8930 911	VMED 29, Rotor, ALS, 24 hr, Hoist Daytime Only					
5. Hospitals							
Name	Degrees Decimal Minutes	Travel Time From Fire		Phone	Helipad		Level of Care
Lake Chelan Health 110 S. Apple Blossom Drive Chelan WA	Lat: 47° 50' 20 N	30 Min	3 Hr	509-683-2474		X	Level IV Trauma
	Long: 119° 59' 20 W						
Central Washington Hospital (Confluence Health Central Campus) 1201 S. Miller Wenatchee WA	Lat: 47° 24. 43 N	1 Hr	4 Hr	509-433-3115	X		Level III Trauma
	Long: 120° 19. 28 W						
Harborview Medical Center 325 9 th Ave Seattle WA	Lat: 47° 36. 24 N	1.5 Hr	6 Hr	206-744-4025	X		Level I Trauma Burn Center
	Long: 122° 19. 45 W						
ICP	EMS Responders & Capability:		Mariann Turley MEDL/AEMT		509-496-9370		
			Cass Monroe MEDLt/EMTF		509-724-0843		
	Equipment Available on Scene:		ALS Kit, AED, O2, OTC meds				
	Medical Emergency Channel:		Command 7, 8, 9, 10, 11 (Linked)				
	ETA for Ambulance to Scene:						
	Air:		NA				
	Ground:		15 Min				
	Approved Heli-Spot:		NA				
LUCERNE FOB	EMS Responders & Capability:		Londa Van Kirk MEDL/EMTF (Lucerne FOB)		360-815-7645		
			MEDIC 6 Steve Medina (Air Medical)		360-556-9568		
			EMT 4 Justin Dominguez (Boat Medical)		509-741-0611		
			MEDIC 10 Sean Hendron (Boat Medical)		443-851-2014		
	Equipment Available on Scene:		ALS Kit, AED, O2, OTC meds				
	Medical Emergency Channel:		Command 7, 8, 9, 10, 11 (Linked)				
	ETA for Ambulance to Scene:						
	Air:		2 hr				
	Water/Ground:		3 hr				
	Approved Heli-Spot:		NA				
BRANCH I	EMS Responders & Capability:		MEDIC 8 Rick Kelly (DIV Z)		509-290-3922		
			MEDIC 3 Adam Lathrop (DIV A)		425-531-0469		
			MEDIC 12 Ethan Biederman (DIV A)		513-882-2837		
			EMT 5 Dave Repnik (DIV A)		509-881-4771		
	Equipment Available on Scene:		ALS Kit, Monitor/Defib, O2				
	Medical Emergency Channel:		Command 7, 8, 9,10, 11 (Linked)				
	ETA for Ambulance to Scene:						
	Air:		2 hr				
	Water/Ground:		3 hr				
	Approved Heli-Spots:						
	H1	48° 10.813' N	H11	48° 14.492' N	H15	48° 08.754' N	
		120° 31.925' W		120° 35.922' W		120° 29.813' W	
H10	48° 14.099' N	H12	48° 13.381' N	H16	48° 07.744' N		
	120° 36.782' W		120° 35.919' W		120° 29.541' W		
Lat:		NA					
Long:		NA					

BRANCH II	EMS Responders & Capability:	REMS 2 Brayden Kirk + 3 (DIV D) Jed Getman MEDL(t)/AEMF (Stehekin FOB)	509-264-8203 541-391-3243
	Equipment Available on Scene:	ALS Kit, Monitor/Defib, O2, Rescue Gear	
	Medical Emergency Channel:	Command 7, 8, 9, 10, 11 (Linked)	
	ETA for Ambulance to Scene:		
	Air:	2 hr	
	Ground:	3 hr	
	Approved Heli-Spot:		
	Lat:	H14 48° 20.760' N	
Long:	120° 43.242' W		
BRANCH IV	EMS Responders & Capability:	MEDIC 9 Benjamin McCall (DIV H) AMBO 2 Anna Reynolds (DIV H)	360-420-6492 509-768-5519
	Equipment Available on Scene:	ALS Kit, Monitor/Defib, O2	
	Medical Emergency Channel:	Command 7, 8, 9, 10, 11,12 (Linked)	
	ETA for Ambulance to Scene:		
	Air:	2 hr	
	Ground:	3 hr	
	Approved Heli-Spot:	NA	
	Lat:	NA	
Long:	NA		
BRANCH V	EMS Responders & Capability:	MEDIC 5 Brian Linacre (CONT) MEDIC 7 Steve Drab (CONT) MEDIC 12 Savannah McLaughlin (DIV S) REMS 1 Ray Storm + 4 (DIV S)	301-781-7990 406-600-2059 435-590-4952 415-637-0491
	Equipment Available on Scene:	ALS Kit, Monitor/Defib, O2, Rescue Gear	
	Medical Emergency Channel:	Command 7, 8, 9, 10, 11, 12 (Linked)	
	ETA for Ambulance to Scene:		
	Air:	2 hr	
	Ground:	3 hr	
	Approved Heli-Spot:		
	Lat:	H25 47° 59.200' N	
Long:	120° 16. 521' W		
TBD	EMS Responders & Capability:	TBD	
	Equipment Available on Scene:		
	Medical Emergency Channel:	Command 7,8,9,10,11 (Linked)	
	ETA for Ambulance to Scene:		
	Air:		
	Ground:		
	Approved Heli-Spot:	NA	
	Lat:	NA	
Long:	NA		
TBD	EMS Responders & Capability:	TBD	
	Equipment Available on Scene:		
	Medical Emergency Channel:	Command 7,8,9,10,11 (Linked)	
	ETA for Ambulance to Scene:		
	Air:		
	Ground:		
	Approved Heli-Spot:	NA	
	Lat:	NA	
Long:	NA		

Prepared By (Medical Unit Leader)	Date	Reviewed By (Safety Officer)	Date
Mariann Turley MEDL	07/03/24	Matt Broyles SOFC	07/03/24
Signature: Mariann Turley		Signature: Matt Broyles	

Medical Incident Report

FOR A NON-EMERGENCY INCIDENT, WORK THROUGH CHAIN OF COMMAND TO REPORT AND TRANSPORT INJURED PERSONNEL AS NECESSARY.

FOR A MEDICAL EMERGENCY: IDENTIFY ON SCENE INCIDENT COMMANDER BY NAME AND POSITION AND ANNOUNCE "MEDICAL EMERGENCY" TO INITIATE RESPONSE FROM IMT COMMUNICATIONS/DISPATCH.

Use the following items to communicate situation to communications/dispatch.

1. CONTACT COMMUNICATIONS / DISPATCH (Verify correct frequency prior to starting report)

Ex: "Communications, Div. Alpha. Stand-by for Emergency Traffic."

2. INCIDENT STATUS: Provide incident summary (including number of patients) and command structure.

Ex: "Communications, I have a Red priority patient, unconscious, struck by a falling tree. Requesting air ambulance to Forest Road 1 at (Lat./Long.) This will be the Trout Meadow Medical, IC is TFLD Jones. EMT Smith is providing medical care."

Severity of Emergency / Transport Priority	<input type="checkbox"/> RED / PRIORITY 1 Life or limb threatening injury or illness. Evacuation need is IMMEDIATE <i>Ex: Unconscious, difficulty breathing, bleeding severely, 2° - 3° burns more than 4 palm sizes, heat stroke, disoriented.</i> <input type="checkbox"/> YELLOW / PRIORITY 2 Serious Injury or illness. Evacuation may be DELAYED if necessary. <i>Ex: Significant trauma, unable to walk, 2° - 3° burns not more than 1-3 palm sizes.</i> <input type="checkbox"/> GREEN / PRIORITY 3 Minor Injury or illness. Non-Emergency transport <i>Ex: Sprains, strains, minor heat-related illness.</i>
Nature of Injury or Illness & Mechanism of Injury	Brief Summary of Injury or Illness <i>(Ex: Unconscious, Struck by Falling Tree)</i>
Transport Request	Air Ambulance / Short Haul/Hoist Ground Ambulance / Other
Patient Location	Descriptive Location & Lat. / Long. (WGS84)
Incident Name	Geographic Name + "Medical" <i>(Ex: Trout Meadow Medical)</i>
On-Scene Incident Commander	Name of on-scene IC of Incident within an Incident <i>(Ex: TFLD Jones)</i>
Patient Care	Name of Care Provider <i>(Ex: EMT Smith)</i>

3. INITIAL PATIENT ASSESSMENT: Complete this section for each patient as applicable (start with the most severe patient)

Patient Assessment: See IRPG page 106

Treatment:

4. TRANSPORT PLAN:

Evacuation Location (if different): (Descriptive Location (drop point, intersection, etc.) or Lat. / Long.) Patient's ETA to Evacuation Location:

Helispot / Extraction Site Size and Hazards:

5. ADDITIONAL RESOURCES / EQUIPMENT NEEDS:

Example: Paramedic/EMT, Crews, Immobilization Devices, AED, Oxygen, Trauma Bag, IV/Fluid(s), Splints, Rope rescue, Wheeled litter, HAZMAT, Extrication

6. COMMUNICATIONS: Identify State Air/Ground EMS Frequencies and Hospital Contacts as applicable

Function	Channel Name/Number	Receive (RX)	Tone/NAC *	Transmit (TX)	Tone/NAC *
COMMAND					
AIR-TO-GRND					
TACTICAL					

7. CONTINGENCY: Considerations: If primary options fail, what actions can be implemented in conjunction with primary evacuation method? Be thinking ahead.

8. ADDITIONAL INFORMATION: Updates/Changes, etc.

REMEMBER: Confirm ETA's of resources ordered. Act according to your level of training. Be Alert. Keep Calm. Think Clearly. Act Decisively.