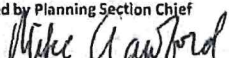
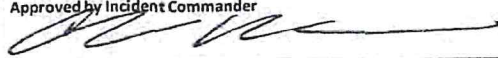


INCIDENT OBJECTIVES	1. Incident Name	2. Date Prepared	3. Time		
	PIONEER	07/04/2024	1900		
4. Operational Period					
Day Operations: 0700-2100					
<p>Strategic Framework: The Pioneer Fire is a full suppression fire utilizing strategies and tactics that provide the highest likelihood of success while mitigating risks to the responders and public. Extreme terrain prevents direct attack. Indirect lines are being identified and established that reduces risk to responders while protecting identified values including private and federal infrastructure and recreational values.</p> <p>Management Objectives:</p> <ul style="list-style-type: none"> • Ensure the safety and well-being of responders and the public by making timely risk-informed decisions that align with values at risk. • Protect private and federal infrastructure and recreational values. • Foster relationships with local cooperators and the public by providing coordinated, accurate, and timely information. • Coordinate suppression activities with READ's to identify and mitigate current and future impacts to the landscape and resources. • Treat each other with dignity and respect and act in a professional manner on the fire and in the communities. • Manage cost commensurate with values at risk by coordinating with the Agency Administrators and Incident Business Advisors. <p>Operational Objectives:</p> <ul style="list-style-type: none"> • Implement an effective suppression strategy utilizing direct attack where and when appropriate to protect values at risk. When fire behavior, terrain, or safety concerns prohibit direct attack, utilize other suppression tactics such as indirect and point protection as appropriate to reduce risk to responders. Take advantage of natural features such as breaks in fuels, topographic features, or changes in weather. • Establish indirect control lines with the highest probability of success which prevent fire spread into populated areas. • Communicate with local law enforcement officials to ensure current and potential evacuations are coordinated. 					
6. Weather Forecast for Period					
7. General Safety Message					
8. Attachments (mark if attached)					
X	Organization List - ICS 203	X	Medical 206WF - 8 Line	X	Finance Message
X	Div. Assignment Lists - ICS 204	X	Safety Message		Dutch Creek Protocol
X	Communications Plan - ICS 205		LCES - ICS 215A		Phone List
X	Medical Plan - ICS 206	X	Weather Forecast	X	Incident Map(s)
X	Air Operation Summary - ICS 220	X	Fire Behavior	X	Unit Log
Prepared by Planning Section Chief			Approved by Incident Commander		
					

ORGANIZATION ASSIGNMENT LIST		
1. Incident Name PIONEER		
2. Date Prepared JULY 4, 2024	3. Time Prepared 1800	
4. Operational Period JULY 5, 2024 0700 – 2100		
5. Incident Commander and Staff		
Position	Name	
Incident Commander	Nate LeFevre	
Incident Commander (T)	Steve North	
Deputy Incident Commander	Chris Orr	
Safety Officer	Matt Broyles / Eric Brown	
Information Officer	Cheyne Rossbach	
Liaison	Shawn Christianson / Greg Brody (Stehekin) / Mark Suba / Rhonda Marchand (T)	
Human Resources	Margaret Dietrich	
READ Liaison	Courtney Rowe	
6. Agency Representatives		
Agency	Name	
USFS Oka/Wen Agency Admin	Chris Furr	
USFS Oka/Wen Agency Admin (T)	Paul Willard	
DNR Agency Administrator	Larry Leach	
DNR Deputy Agency Administrator	Wyatt Leighton	
NPS Agency Administrator	Don Striker	
NPS Agency Representative	Denise Shultz	
7. Planning Section		
Plans Section Chief	Mike Crawford	
Deputy Plans Section Chief	Debbie Plummer (T)	
Resource Unit	Gary Duranceau	
Status Check-in	Katelyn Roeder/ Charlie Hardy	
Situation Unit	Shannon Theall / Ray Moeckel (T)	
GIS Specialists	Aleksandar Dozic / Olivia Hughes (T)	
Demob Unit	Jay Lord	
Documentation Unit	Chris Oelschlager	
Incident Meteorologist	Todd Carter / Maddie Kristell (T)	
Fire Behavior Analyst	Steve Ziel / Michael Bowden	
Strategic Operational Planner	Greg Funderburk	
Air Resources Advisor	Dan Byrd	
8. Logistics Section		
Logistics Section Chief	Franklin Vaughan / Larry Falcon (T)	
Deputy Logistics Section Chief	Max Yager (Stehekin) / Cindy Wedekind (Lucerne)	
Facilities	Jan Robbins / Kelsey Lipp / Peter Drott (T) / Mike Prevost (T)	
Base Camp Manager	Dave Lefevre/Mac McEntyre(T)	
Supply Unit	Vicki Cunningham	
IT Specialist	Mike Gascon / Chad Funnemark / Ben Smith (T)	
Receiving Distribution	Michael Hanson / David Richards (Stehekin) / Martin Eversaul (Lucerne)	
Ordering Manager	Noe Reyes / Kerry Johnston	
Ground Support Unit	Casey Glade / Joe Keady	
Communication Unit	Seth Baumgarten / Michael Merrick (T)	
Communication Tech.	Keith Schaff / Kevin Judd	
Food Unit	Kristy Naughton / John Cody/Shawna Monroe (T) / Steven Bales (T)	
Security Manager	Michael Fakier	
Medical Unit	Mariann Turley / Cass Monroe (T) / Jed Getman / (Stehekin) / Londa Van Kirk	
9. Operations Section		
OPS Section Chief - Lead	Jon Larson / Jeff Bortner (T)	
OPS Section Chief - Planning		
OPS Section Chief – Field	Seth Merritt	
a. Branch I		
Branch Director	Scott Ebel/ Josh Verellen (T)	
Division	A	Seth Missal / James Fields (T)
Division	Z	Travis Baker/Frank Heilman (T)
b. Branch II		
Branch Director	Scott Ebel/ Josh Verellen (T)	
Division	D	Andrew Schaffran
c. Branch IV		
Branch Director	Roger Goldman	
Division	H	Matt Ziegler / Steve Abrams (T)
d. Branch V		
Branch Director	Roger Goldman	
Division	S	Linda Gibson
Division	Contingency / Roads	Jennifer Harris / Eric Metzger (T)
Division	Staging	Jon Merager
Division	Boat	Nate Crawford / Seth Ellis (T)
e. Air Operations Branch		
AOB Director – Planning	Mark Hocken	
AOB Director – Field	Ted Hass	
HELCO ATGS	Jamie Lilienthal	
10. Finance Section		
Finance Section Chief	Andrea Andresen / Lori Bailey (T)	
Time Unit	Beverly Hollars	
Procurement	Audrey Mainwaring	
Comp/Claims	Kelly Lorenz (Virtual)	
Cost Unit	Dede Domingos (Virtual)	
Prepared by Gary Duranceau, RESL		



Fire Weather Forecast



FORECAST NO: 23
PREDICTION FOR: 24 Hr Shift
SHIFT DATE: Wednesday 7/5/2024
TIME AND DATE ISSUED: 7/4/2024 1900 hrs

INCIDENT: Pioneer Fire
SIGNED: *Todd Carter*
Incident Meteorologist Trainee (IMET)

Discussion:

*****Excessive Heat Warning has been issued by the NWS, Spokane effective Sat. through Friday*****
High pressure just to the west puts the area in dry northwest flow. Windy early afternoon and evening winds down the lake can be expected Friday as a cold front moves through Friday night. Breezes and dry air in the mountains are a concern as winds gust to 25 mph. Temperatures will be hot with humidity hovering around twenty percent. Saturday will have less wind, drier air and slightly cooler temperatures.

WEATHER FORECAST FOR TODAY/FRIDAY:

SKY/WEATHER: Sunny.
MAX TEMPERATURE: 90 to 95 valleys/mid-slopes. 68 to 75 around 5000 feet.
MIN RH: 18 to 25 percent valleys/mid-slopes. 23 to 30 percent ridges.
20 FT WINDS:
Lower Valleys: Southeast to 10 mph becoming northwest in the afternoon at 7 to 12 mph. Down lake to 15 mph gusts to 25 mph after 1700.
Mid-slopes and Ridges: Southwest 5 to 10 mph turning northwest 10-15 mph gusting to 25 mph.
HAINES INDEX: 5 High. **TRANSPORT WINDS:** W-NW 10-15 mph.
INVERSION: Moderate inversion lifting by 1100. Mixing Height 8000 ft by 1400.

TONIGHT:

SKY/WEATHER: Mostly Clear.
MIN TEMPERATURE: 61 to 65 valleys/mid-slopes. 48 to 52 around 5000 feet.
MAX RH: Poor Recovery. 30 to 45 percent valleys/mid-slopes. 35 to 45 percent ridges around 5000 feet.
20 FT WINDS:
Valleys/Lower Slopes: Northwest down lake 15 mph with gusts to 25 mph in the evening decreasing after 2200.
Mid-Slopes and Ridges: Northwest 10 to 15 mph gusts to 20 mph in the evening.
INVERSION: Developing after 2100 hrs to near 1000 ft.

SATURDAY:

SKY/WEATHER: Sunny.
MAX TEMPERATURE: 88 to 94 valleys/mid-slopes. 63 to 70 around 5000 feet.
MIN RH: 17 to 23 percent valleys/mid-slopes. 20 to 30 percent ridges.
20 FT WINDS:
Lower Valleys: Southeast 5 to 10 mph becoming northwest late in the afternoon at 6 to 10 mph. Down lake 10 mph gusts to 18 mph after 1600.
Mid-slopes and Ridges: Southeast to 10 mph turning Northwest around 10 mph late afternoon and evening.
HAINES INDEX: 4 Moderate. **TRANSPORT WINDS:** SE turning W 10 mph.

Boating concerns Friday: Choppy waves estimated to 2 feet on Lake Chelan straits after 1500.
Aviation concerns Friday: Temperature near 20C at 4000 feet for load calcs. Increased winds could create additional turbulence especially on lee side slopes.

Weather observations can be texted to 509-319-0474 or emailed to todd.carter@noaa.gov

Fire Behavior Forecast # 24

Name of Incident: Pioneer	Administrative Unit: SE Region DNR / Okanogan-Wenatchee NF
Date & Time Issued: July 4, 2024 @ 1900	Operational Period: DAY 07/05/2024
FBAN: Steve Ziel	Signed: /z/

Assumptions: Hot and dry conditions will provide all the ingredients for very active fire behavior today. Current fuel conditions will support rapid fire spread with wind and slope alignment. Fire behavior is being partially inhibited by early season fuel conditions, and discontinuity of the fuel bed. Expect moderate-to active burning conditions between 1300-1800. Persistent consumption and heat retention in heavy fuels will serve as ignition sources as drying occurs. Live fuels are not contributing to fire spread at this time. Lake effect winds (up or down lake) dominate lower and mid slopes; the fire is on a dry S/SW aspect with steep side drainages that provide strong upslope winds. Wind/slope alignment and/or lake wind will influence fire spread rate and direction. Expect down lake winds, with gusts to 25 mph by 1700, and 10-15 gusting to 25 from NW on ridgetops by afternoon.

Weather Summary

*See attached Fire Weather Forecast

Fire Behavior Summary

Fuels in the fire area are composed of a mosaic of *Timber Litter, Grass, Timber with Understory, and Grass/Shrub* models. The fire is burning in the Rex Creek (2001) fire footprint. Primary tree species include mixed sizes and densities of Douglas Fir and Ponderosa Pine. Local timber litter is compact to fluffy. Brush and understory species include ceanothus, hardwoods, and dog-hair conifer reproduction. Large snags and heavy downed fuel loadings are common throughout all areas. Live woody and herbaceous fuels are seasonally moist, and not contributing to rates of spread; grasses are partially to fully cured depending on elevation and aspect. Fuel conditions change by aspect, previous fire history, and elevation. Most N and E aspects include 23-year old brush and conifer trees.

Today's potential fire behavior will include isolated pockets/areas of active flanking, backing (with rollout), and limited head fire spread with wind/slope alignment. Primary spread mechanism has been backing with rollout, flanking, and fingered head fire spread. Heavy fuels are retaining heat and serve as ignition sources in dry fine fuels. Early season fuel condition is inhibiting full fire behavior potential – live fuels are moist; some grasses are still curing. Expect daily increases in fire behavior developing (hot/dry) for next several days. Expect some interior flare-ups with drying. Potential for rapid slope reversal spread where it occurs.

* FFM= 3%-4%, 1000hr. moisture=12%, Woody fuels 170%, Probability of Ignition-80 -90%, Max Spotting <0.5

Fuel Type	Rate of Spread	Flame Length	Backing ROS
...If your work area includes -	(CH/HR = FPM)	Feet	FPM
GR2 - Moderate load grass/shrub	25 - 30	3 - 4	1-2
SH2 - Moderate load shrub	3 - 4	2	< 1
TU5 - High load Timber w/ Understory	12 - 14	8- 9 (torching)	1
TL8 - Long needle timber litter	13 - 15	4- 6	1 +

Specific Assignments:

Div. A – Expect creeping, backing, and flanking in upper Meadow & Cascade Cr. Potential upslope short finger runs in draws.

Div. Z – Watch for flare ups in unburned parcels in freshly fired areas. Monitor backing fire toward Prince Cr. and alluvial area.

Other Divisions – Should not be affected by fire activity during the burn period. Monitor smoke direction and amount. Assess fuels.

***IA** – Ensure good size-up before engaging. Assess fire spread potential based on fuel, weather, topography and values at risk.

Air Operations: SW winds becoming NW at ridge top wind gusting to 25 mph. Complex terrain watch for lee-side turbulence.

Safety

Sudden flare-ups are possible, multiple flare-ups may occur with winds. Multiple simultaneous fire situations become critical without LCES. Plan ahead for actions to take; foot travel takes time!! Review the Watch Out Situations with your resources– can you mitigate??

We will be experiencing continued “warming and drying” over the next several days. Due to the variety of aspects, elevations, fuel types, and local influences.....it is important to monitor the rate and effect of drying in your area. Subtle changes in temperature and humidity will contribute to increased fire behavior – good opportunity to observe and anticipate fire behavior (be a student of fire).

*Today's Fire Behavior Forecast contains 709 words written for your situational awareness.

DIVISION ASSIGNMENT LIST			1. Branch I		2. Division / Group A		
3. Incident Name Pioneer			4. Operational Period Date: 07/05/2024 Time: 0700-2100				
5. Operations Personnel							
Operations Chief		Jon Larson / Jeff Bortner(T)		Division / Group Supervisor		Seth Missal / James Fields (T)	
Operations Chief (Plans)				Branch Director		Scott Ebel / Josh Verellen (T)	
Safety Officer		Matt Broyles / Eric Brown		Air Attack Supervisor		Jamie Lilienthal	
6. Resources Assigned this Period							
	Strike Team / Task Force / Resource Designator	Leader	Number Persons	Tentative Last Work Day	Drop Off Pt / Time	Pick Up Pt / Time	
1.	O-180 TFLD	Joe Landburg	1	7/10	DP-22 / Moore Point	DP-22 / Moore Point	
2.	O-266 TFLD (T)	Frank Bojorquez	1	7/12	DP-22 / Moore Point	DP-22 / Moore Point	
3.	** C-19 CR2I Cle Elum Rd	Cris Machado	18	7/8			
4.	C-28 CR2I Entiat	Tyler Herdman	22	7/15	DP-22 / Moore Point	DP-22 / Moore Point	
5.							
6.	O-359 MEDIC 12	Ethan Biederman	1	7/16	DP-22 / Moore Point	DP-22 / Moore Point	
7.	O-310 EMT 5	Dave Repnik	1	7/14	DP-22 / Moore Point	DP-22 / Moore Point	
8.							
9.	O-175 SOFR	Melissa Moore	1	7/11	DP-22 / Moore Point	DP-22 / Moore Point	
10.	O-352 SOFC	Kris Croddy	1	7/16	Lucerne	Lucerne	
11.							
12.							
13.							
14.							
15.							
16.							
17.							
18.							
19.							
20.							
21.							
7. Control Operations Task: Contain fire spread to the northwest where terrain and fuels allow for highest probability of success. Assess fire perimeter progression to the north and west at higher elevations. Implement point protection efforts on federal & private infrastructure. Purpose: To slow fire progression, provide time for suppression tactics, and continue to prep around critical values. End state: Minimize fire impacts to critical values including private inholdings and Forest Service infrastructure.							
8. Special Instructions							
<ul style="list-style-type: none"> In large or long term spike camps use helicopters, boats, or pack stock to deliver portable backcountry latrines and remove human waste if necessary. If camp does not have adequate pack, boat, or air support for human waste management, establish community latrines well away from water sources and common areas. Use human waste bags, if necessary. Minimize ground disturbance on the Moore Point and Meadow Creek alluvial fans in order to protect sensitive resources. Hose used from Prince Creek to Moore Pt: contaminated with invasive plants. Do not reuse. Backhaul to Moore Pt DP22 and store in "infested hose" area at Moore Pt until decontaminated. ** Denotes available for Initial Attack 							
9. Division / Group Communication Summary							
Function	Frequency	System	Channel	Function	Frequency	System	Channel
Command Repeater	See Comm Plan			Command	See Comm. Plan		
TAC				Air To Ground	See Comm. Plan		
Prepared by (Resource Unit Leader): Gary Duranceau			Approved by (Planning Section Chief): Mike Crawford			Date: 7/4/24	Time: 1900

DIVISION ASSIGNMENT LIST				1. Branch I		2. Division / Group Z					
3. Incident Name Pioneer				4. Operational Period Date: 07/05/2024 Time: 0700-2100							
5. Operations Personnel											
Operations Chief			Jon Larson / Jeff Bortner (T)			Division / Group Supervisor		Travis Baker / Frank Heilman (T)			
Operations Chief (Plans)						Branch Director		Scott Ebel / Josh Verellen (T)			
Safety Officer			Matt Broyles / Eric Brown			Air Attack Supervisor		Jamie Lilienthal			
6. Resources Assigned this Period											
	Strike Team / Task Force / Resource Designator		Leader		Number Persons	Tentative Last Work Day	Drop Off Pt / Time		Pick Up Pt / Time		
1.	O-182 WFM1 Selway		Brian Peterson		13	7/8	DP-34 30		DP-34 30		
2.											
3.	C-29 CRW1 Baker River IHC		Gary Chicks		21	7/11	DP-34 30		DP-34 30		
4.											
5.	A-78 UR-31		Marshal Wallace		4	7/9	DP-34 LUCERNE		LUCERNE DP-34		
6.											
7.	O-307 MEDIC 8		Rick Kelly		1	7/11	DP-34 30		DP-34 30		
8.											
9.	O-174.52 SOFR		George Libercajt		1	7/7	DP-27 / Lucerne		DP-27 / Lucerne		
10.											
11.											
12.											
13.											
14.											
15.											
16.											
17.											
18.											
19.											
20.											
21.											
22.											
23.											
7. Control Operations											
Task: Contain fire spread to the southeast where terrain and fuels allow for high probability of success. Assess fire perimeter progression to the east/southeast at higher elevations.											
Purpose: To slow fire progression, provide time for suppression tactics, and continue to prep around critical values.											
End state: Minimize fire impacts to critical values including private inholdings and Forest Service infrastructure											
8. Special Instructions											
<ul style="list-style-type: none"> In large or long term spike camps use helicopters, boats, or pack stock to deliver portable backcountry latrines and remove human waste if necessary. If camp does not have adequate pack, boat, or air support for human waste management, establish community latrines well away from water sources and common areas. Use human waste bags, if necessary. Ensure hazard mitigations and IWI protocols are in place before taking action. Hose used from Prince Creek to Moore Pt: contaminated with invasive plants. Do not reuse. Backhaul to Moore Pt DP22 and store in "infested hose" area at Moore Pt until decontaminated. 											
9. Division / Group Communication Summary											
Function	Frequency		System		Channel	Function	Frequency		System		Channel
Command Repeater			See Comm Plan			Command			See Comm. Plan		
TAC						Air To Ground			See Comm. Plan		
Prepared by (Resource Unit Leader): Gary Duranceau					Approved by (Planning Section Chief) Mike Crawford			Date 7/4/24		Time 1900	

DIVISION ASSIGNMENT LIST				1. Branch II		2. Division / Group D	
3. Incident Name Pioneer				4. Operational Period Date: 07/05/2024 Time: 0700-2100			
5. Operations Personnel							
Operations Chief		Jon Larson / Jeff Bortner (T)		Division / Group Supervisor		Andrew Schaffran	
Operations Chief (Plans)				Branch Director		Scott Ebel / Josh Verellen (T)	
Safety Officer		Matt Broyles / Eric Brown		Air Attack Supervisor		Jamie Lilienthal	
6. Resources Assigned this Period							
	Strike Team / Task Force / Resource Designator	Leader	Number Persons	Tentative Last Work Day	Drop Off Pt / Time	Pick Up Pt / Time	
1.	O-183 TFLD	Harley Hamman	1	7/6	Stehekin	Stehekin	
2.	O-276 HECM	Reynaldo Juban	1	7/12	Stehekin	Stehekin	
3.	O-277 HECM	Jason Evans	1	7/12	Stehekin	Stehekin	
4.							
5.	O-278 SMOD Crew 84	Geoff Hibbs	5	7/9	Stehekin	Stehekin	
6.	O-187 WFM1 Grass Lake	William Johnson	9	7/7	Stehekin	Stehekin	
7.	**O-218 WFM2 Olympic	Jonah Gray	10	7/6	Stehekin	Stehekin	
8.							
9.	O-184 FELB	Marty Cozart	1	7/6	Stehekin	Stehekin	
10.	O-186 FMOD Kintner Timber	Cory Kintner	2	7/6	Stehekin	Stehekin	
11.	O-185 FMOD Brothers Fire	Levi Merritt	2	7/6	Stehekin	Stehekin	
12.							
13.	O-166 REAF	Jordan Spaak	1	7/6	Stehekin	Stehekin	
14.	O-235 REAF	Cade Simpson	1	7/7	Stehekin	Stehekin	
15.	O-167 ARCH	Jason Wright	1	7/12	Stehekin	Stehekin	
16.	O-168 ARCH	Ernest Wingate	1	7/6	Stehekin	Stehekin	
17.							
18.	O-165 REMS 2	Brayden Kirk	4	7/10	Stehekin	Stehekin	
19.	O-174.88 SOFR	Leo Engleson	1	7/7	Stehekin	Stehekin	
20.	O-353 SOFC	Phillip Bordelon	1	7/17	Stehekin	Stehekin	
21.	E-89 Driver	Phillip Bossen	1	7/14	Stehekin	Stehekin	
7. Control Operations Task: Continue construction of contingency lines around the community of Stehekin. Purpose: Minimize fire impacts to critical values including private inholdings, the community of Stehekin, and Forest Service infrastructure. End state: Critical values including private inholdings, the community of Stehekin, and Forest Service infrastructure are not impacted by the Pioneer fire, while minimizing fire impacts and acres burned utilizing historic wildfire control features and natural barriers.							
8. Special Instructions							
<ul style="list-style-type: none"> All operational personnel working on USFS lands will need to conduct a thorough inspection for invasive species seeds on boots including laces, clothing, and gear prior to entering NPS lands. Only fresh (direct from the cache) hose should be utilized on NPS lands to prevent the transport of invasive species seeds. Hose used on USFS lands should not be used on NPS lands and hose used on NPS lands should not be used on USFS lands to prevent the spread of invasives species seeds. Cargo loads being transported onto NPS lands should be inspected for invasive weed seed prior to flight. Ensure hazard mitigations and IWI protocols are in place before taking action. NPS Resource Avoidance Area Flagging is yellow with red polka dots. Contact NPS READs before working in areas where this flagging is present. ** Denotes available for Initial Attack 							
9. Division / Group Communication Summary							
Function	Frequency	System	Channel	Function	Frequency	System	Channel
Command Repeater	See Comm Plan			Command	See Comm. Plan		
TAC				Air To Ground	See Comm. Plan		
Prepared by (Resource Unit Leader): Gary Duranceau			Approved by (Planning Section Chief): Mike Crawford			Date: 7/4/24	Time: 1900

DIVISION ASSIGNMENT LIST		1. Branch IV		2. Division / Group H			
3. Incident Name Pioneer		4. Operational Period Date: 07/05/2024 Time: 0700-2100					
5. Operations Personnel							
Operations Chief		Jon Larson / Jeff Bortner (T)		Division / Group Supervisor		Matt Ziegler / Steve Abrams (T)	
Operations Chief (Plans)				Branch Director		Roger Goldman	
Safety Officer		Matt Broyles / Eric Brown		Air Attack Supervisor		Jamie Lilienthal	
6. Resources Assigned this Period							
1.	Strike Team / Task Force / Resource Designator	Leader	Number Persons	Tentative Last Work Day	Drop Off Pt / Time	Pick Up Pt / Time	
1.	O-355 TFLD	Jason Conway	1	7/9	ICP	ICP	
2.							
3.	O-333 HEQB	Jed Neumeier	1	7/16	ICP	ICP	
4.	O-127 FMOD Rainstorm	Kendall Cain	2	7/8	ICP	ICP	
5.	O-128 FMOD Rainstorm	Mike Lind	2	7/8	ICP	ICP	
6.	O-344 FELB	Jacob Harvey	1	7/15	ICP	ICP	
7.							
8.	**E-191 ENG3 Rattlesnake Ridge	Brandon Marsh	3	7/15	ICP	ICP	
9.	E-172 WTS2 UPPER VALLEY	JOSEPH Schoenmakers	1	7/12	ICP	ICP	
10.	E-76 WTS2 Mountain View Wildfire	Robert Martin	1	7/17	ICP	ICP	
11.	E-83 WTS2 King Hydroseeding	Joe Ivie	1	7/11	ICP	ICP	
12.	E-113 WTS2 Ridgetop IRON	TIM WHITCOMB	1	7/12	ICP	ICP	
13.	E-102 SKG2 Dukes Equipment	Justin Durston	2	7/15	ICP	ICP	
14.	E-103 MBM2 Marcon Timber	Mark Foresman	2	7/20	ICP	ICP	
15.	E-104 MBM2 Havillah Logging	Tom Kershner	2	7/20	ICP	ICP	
16.	E-105 MBM2 Justin Pitts	Adam Bergstrom	2	7/15	ICP	ICP	
17.	O-383 MEDIC 13	ANTHONY Byski	2		ICP	ICP	
18.	O-309 MEDIC 9	Benjamin McCall	1	7/15	ICP	ICP	
19.	E-194 AMBO-2	Anna Reynolds	2	7/15	ICP	ICP	
20.							
21.	O-267 SOFR	Tom Talbot	1	7/10	ICP	ICP	
22.							
23.	TBD:						
24.							
7. Control Operations							
<p>Task: Continue road work on both sides of the Gold Creek Rd from DP-100 to DP-72 by removing brush and debris no more than 6ft from the edge of roadway and that which causes obstructions to visibility around corners.</p> <p>Purpose: To provide better access and facilitate safe firefighter traffic on the Gold Creek corridor.</p> <p>End state: Improve roadways to provide safer and more efficient travel.</p>							
8. Special Instructions							
<ul style="list-style-type: none"> • Work with READs to maintain resource protection • Ensure hazard mitigations and IWI protocols are in place before taking action. • Do not draft from Gold Creek above DP-102 or from Black Canyon Creek. • ** Denotes available for Initial Attack 							
9. Division / Group Communication Summary							
Function	Frequency	System	Channel	Function	Frequency	System	Channel
Command Repeater	See Comm Plan			Command	See Comm. Plan		
TAC				Air To Ground	See Comm. Plan		
Prepared by (Resource Unit Leader): Gary Duranceau			Approved by (Planning Section Chief): Mike Crawford			Date 7/4/24	Time 1900

DIVISION ASSIGNMENT LIST				1. Branch V		2. Division / Group S						
3. Incident Name Pioneer				4. Operational Period Date: 07/05/2024 Time: 0700-2100								
5. Operations Personnel												
Operations Chief		Jon Larson / Jeff Bortner (T)			Division / Group Supervisor		Linda Gibson					
Operations Chief (Plans)					Branch Director		Roger Goldman					
Safety Officer		Matt Broyles / Eric Brown			Air Attack Supervisor		Jamie Lilienthal					
6. Resources Assigned this Period												
	Strike Team / Task Force / Resource Designator		Leader		Number Persons	Tentative Last Work Day	Drop Off Pt / Time		Pick Up Pt / Time			
1.	O-179 TFLD		Charlie Humbert		1	7/9	Camp 4 Spike		Camp 4 Spike			
2.	**O-249 TFLD (T)		Mark Harper		1	7/9	ICP		ICP			
3.												
4.	**C-18 CR2I Colville		Jacob Morse		21	7/6	Camp 4 Spike		Camp 4 Spike			
5.	**C-19 CR2I Cle Elum RD		Cris Machado		18	7/8	ICP		ICP			
6.	C-23 CR2I SRV1		Jaime Medrano		23	7/11	ICP		ICP			
7.												
8.	**E-193 ENG5 WA-SES 4501		Connor Rupert		4	7/15	ICP		ICP			
9.												
10.	E-73 WTS1 Strand Tenders		Wade Strand		1	7/11	Camp 4 Spike		Camp 4 Spike			
11.	E-78 WTS2 King Hydroseeding		Don Warden		1	7/10	Camp 4 Spike		Camp 4 Spike			
12.	E-69 FTRA Moras Forestier		Rudy Morris		1	7/14						
13.	O-43 REMS1		Ray Storm		5	7/9	Camp 4 Spike		Camp 4 Spike			
14.	O-358 MEDIC 11		Savanah McLaughlin		1	7/16	ICP		ICP			
15.												
16.	O-345 SOF2		Todd Mott		1	7/14	Camp 4 Spike		Camp 4 Spike			
17.												
18.	E-18, E-93, E-94, E-148, E-149 UTV											
19.												
20.												
21.												
22.												
23.	TBD:											
24.												
7. Control Operations												
Task: Identify and make necessary improvements to the control line and minimize impacts to the 8200 Road with road watering operations.												
Purpose: To establish a barrier to fire to the east of Safety Harbor Creek.												
End state: Control line anchored from South Navaree CG to Lake Chelan.												
8. Special Instructions												
<ul style="list-style-type: none"> Ensure hazard mitigations and IWI protocols are in place before taking action. ** Denotes available for Initial Attack 												
9. Division / Group Communication Summary												
Function	Frequency	System			Channel	Function	Frequency	System		Channel		
Command Repeater	See Comm Plan					Command	See Comm. Plan					
TAC						Air To Ground	See Comm. Plan					
Prepared by (Resource Unit Leader): Gary Duranceau					Approved by (Planning Section Chief): Mike Crawford			Date	7/4/24		Time	1900

TO A

DIVISION ASSIGNMENT LIST		1. Branch V	2. Division / Group Contingency/Roads		Page 1 of 2		
3. Incident Name Pioneer		4. Operational Period Date: 07/05/2024 Time: 0700-2100					
5. Operations Personnel							
Operations Chief	Jon Larson / Jeff Bortner (T)		Division / Group Supervisor	Jennifer Harris / Eric Metzger (T)			
Operations Chief (Plans)			Branch Director	Roger Goldman			
Safety Officer	Matt Broyles / Eric Brown		Air Attack Supervisor	Jamie Lilienthal			
6. Resources Assigned this Period							
Strike Team / Task Force / Resource Designator	Leader	Number Persons	Tentative Last Work Day	Drop Off Pt / Time	Pick Up Pt / Time		
1. **O-239 TFLD	Kory Garrie	1	7/9	ICP	ICP		
2. O-245 TFLD	Noah Daniels	1	7/10	ICP	ICP		
3. **O-257 TFLD (T)	Craig McDonald	1	7/9	ICP	ICP		
4.							
5. O-241 HEQB TFLD	Jason Green	1	7/9	ICP	ICP		
6. O-242 HEQB	Travis Parker	1	7/9	ICP	ICP		
7. O-243 HEQB	Everardo Santillan	1	7/9	ICP	ICP		
8. O-330 HEQB	Asa Ray	1	7/6	ICP	ICP		
9. O-337 HEQB (T)	Brandon Humpherys	1	7/6	ICP	ICP		
10.							
11. **E-192 ENG5 WA-SES E4406	Seth Reynolds	4	7/15	ICP	ICP		
12.							
13. E-157 WTS2 Pine Mountain Exc.	Bob Goss	1	7/8	ICP	ICP		
14. E-172 WTS2 Upper Valley	Joseph Schoenmakers	1	7/12	ICP	ICP		
15. E-173 WTS2 Ridgetop Iron	Tim Whitehurst	1	7/12	ICP	ICP		
16. E-174 WTS2 Upper Valley	Jim Smith	1	7/12	ICP	ICP		
17. E-178 WTS2 Northern Construction	Robert Hollandsworth	1	7/12	ICP	ICP		
18. E-179 WTS2 King Hydroseeding	Cosmo Tan	1	7/13	ICP	ICP		
19.							
20. E-154 SKG2 Western	Rick Lauman	2	7/8	ICP	ICP		
21. E-155 SKG2 Mountain View	Shawn Beaman	2	7/8	ICP	ICP		
22.							
23.							
24.							
7. Control Operations							
Task: Implement control lines from H41 to DP76. Continue road maintenance on 4330 and 4010.							
Purpose: To protect critical values at risk.							
End state: To have established control lines in place that correspond to Pioneer Fire strategic plan.							
8. Special Instructions							
<ul style="list-style-type: none"> Ensure hazard mitigations and IWI protocols are in place before taking action. Contingency resources working DIV H: Do not draft from Gold Creek above DP-102 or from Black Canyon Creek. Work with READS to maintain resource protection. ** Denotes available for Initial Attack. 							
9. Division / Group Communication Summary							
Function	Frequency	System	Channel	Function	Frequency	System	Channel
Command Repeater	See Comm Plan			Command	See Comm. Plan		
TAC				Air To Ground	See Comm. Plan		
Prepared by (Resource Unit Leader): Gary Duranceau			Approved by (Planning Section Chief): Mike Crawford			Date 7/4/24	Time 1900

DIVISION ASSIGNMENT LIST			1. Branch V		2. Division / Group Contingency/Roads		Page 2 of 2		
3. Incident Name Pioneer			4. Operational Period Date: 07/05/2024 Time: 0700-2100						
5. Operations Personnel									
Operations Chief		Jon Larson / Jeff Bortner (T)		Division / Group Supervisor		Jennifer Harris / Eric Metzger (T)			
Operations Chief (Plans)				Branch Director		Roger Goldman			
Safety Officer		Matt Broyles / Eric Brown		Air Attack Supervisor		Jamie Lilienthal			
6. Resources Assigned this Period									
	Strike Team / Task Force / Resource Designator		Leader		Number Persons	Tentative Last Work Day	Drop Off Pt / Time		Pick Up Pt / Time
25.	E-69 FTRA Morris Forestry		Rudy Morris		1	7/14	ICP		ICP
26.	E-151 MBM2 Dukes		Chris Boles		2	7/22	ICP		ICP
27.	E-152 MBM2 Axsus		Easton Anderson		2	7/18	ICP		ICP
28.									
29.	O-76 MEDIC 5		Brian Linacre		1	7/7	ICP		ICP
30.	O-271 MEDIC 7		Steve Drab		1	7/11	ICP		ICP
31.									
32.	O-346 SOFR		David Zuares		1	7/14	ICP		ICP
33.									
34.	E-19, E-44 UTV						ICP		ICP
35.									
36.									
37.									
38.									
39.									
40.									
41.									
42.									
43.									
44.									
45.									
46.									
47.									
48.	TBD:								
49.									
7. Control Operations									
Task: Implement control lines from H41 to DP76. Continue road maintenance on 4330 and 4010.									
Purpose: To protect critical values at risk.									
End state: To have established control lines in place that correspond to Pioneer Fire strategic plan.									
8. Control Operations									
<ul style="list-style-type: none"> • Ensure hazard mitigations and IWI protocols are in place before taking action. • Contingency resources working DIV H: Do not draft from Gold Creek above DP-102 or from Black Canyon Creek. • Work with READS to maintain resource protection. • ** Denotes available for Initial Attack 									
9. Division / Group Communication Summary									
Function	Frequency	System	Channel	Function	Frequency	System	Channel		
Command Repeater	See Comm Plan			Command	See Comm. Plan				
TAC				Air To Ground	See Comm. Plan				
Prepared by (Resource Unit Leader): Gary Duranceau			Approved by (Planning Section Chief): Mike Crawford			Date	7/4/24	Time	1900

DIVISION ASSIGNMENT LIST			1. Branch V		2. Division / Group Staging		
3. Incident Name Pioneer			4. Operational Period Date: 07/05/2024 Time: 0700-2100				
5. Operations Personnel							
Operations Chief		Jon Larson / Jeff Bortner (T)		Division / Group Supervisor		Jon Merager	
Operations Chief (Plans)				Branch Director		Roger Goldman	
Safety Officer		Matt Broyles / Eric Brown		Air Attack Supervisor		Jamie Lilienthal	
6. Resources Assigned this Period							
	Strike Team / Task Force / Resource Designator	Leader	Number Persons	Tentative Last Work Day	Drop Off Pt / Time	Pick Up Pt / Time	
1.	E-92 DZR3 Batchelor Excavation	Jay Batchelder	2	7/14	ICP	ICP	
2.	E-157 WTS2 PINE MT. EXC	BOB GOSS	1	7/8	ICP	ICP	
3.	E-174 WTS2 Upper Valley	Jim Smith	1	7/12	ICP	ICP	
4.	E-178 WTS2 Northern Const	Robert Hollandsworth	1	7/12	ICP	ICP	
5.	E-179 WTS2 King Hydro Seeding	Cosmo Tan	1	7/17	ICP	ICP	
6.	E-179 Fire Mgmt Agency	Randy Morris	1	7/17	ICP	ICP	
7.							
8.							
9.							
10.							
11.							
12.							
13.							
14.							
15.							
16.							
17.							
18.							
19.							
20.							
21.							
22.							
23.							
24.							
25.							
26.							
7. Control Operations Task: Remain ready and available for divisions as needed. Purpose: To assist divisions as needed to complete missions as appropriate. End state: Support suppression efforts as needed to project communities.							
8. Special Instructions							
9. Division / Group Communication Summary							
Function	Frequency	System	Channel	Function	Frequency	System	Channel
Command Repeater	See Comm Plan			Command	See Comm. Plan		
TAC				Air To Ground	See Comm. Plan		
Prepared by (Resource Unit Leader): Gary Duranceau			Approved by (Planning Section Chief): Mike Crawford			Date: 7/4/24	Time: 1900

DIVISION ASSIGNMENT LIST			1. Branch		2. Division / Group Boat		
3. Incident Name Pioneer			4. Operational Period Date: 07/05/2024 Time: 0700-2100				
5. Operations Personnel							
Operations Chief		Jon Larson / Jeff Bortner (T)		Division / Group Supervisor		Nate Crawford / Seth Ellis (T)	
Operations Chief (Plans)				Branch Director			
Safety Officer		Matt Broyles / Eric Brown		Air Attack Supervisor		Jamie Lilienthal	
6. Resources Assigned this Period							
	Strike Team / Task Force / Resource Designator		Leader	Number Persons	Tentative Last Work Day	Drop Off Pt / Time	Pick Up Pt / Time
1.	O-342 TFLD		Mike Hill	1	7/10	Lucerne	Lucerne
2.	O-248 TFLD (T)		Jason Ward	1	7/9	Lucerne	Lucerne
3.	O-263 TFLD (T)		Aaron Pedersen	1	7/12	ICP	ICP
4.	O-369 TFLD (T)		Katy Giddings	1	7/15	ICP	ICP
5.							
6.	O-331 HEQB		Brandon Reed	1	7/15	Lucerne	Lucerne
7.	O-332 HEQB		Eric Weinke	1	7/15	Lucerne	Lucerne
8.	O-354 HEQB		Logan Pike	1	7/16	Lucerne	Lucerne
9.	O-361 HEQB (T)		Thomas Dowdy	1	7/16	Lucerne	Lucerne
10.	O-368 HEQB (T)		Cole Bingham	1	7/16	Lucerne	Lucerne
11.							
12.	E-1 TBOT WA-NCP NPS		Sonja Shaw	1	*CWN	Stehekin	Stehekin
13.	E-3 TBOT Chelan Co. F&R#7		Brandon Asher	2	*O/S	Lucerne	Lucerne
14.	E-12 TBOT WA-OWF Chelan RD		Dick Gordon	1	*M-Sa	FS Dock	FS Dock
15.	E-43 TBOT Llama Boat		Gayle Thomas	1	*O/S	FS Dock	FS Dock
16.	E-91 TBOT DNR Mud Puppy		Ben Kilfoil	1	7/13	Lucerne	Lucerne
17.	E-120 TBOT Pilgram		Justin Gavin	1	7/11	FS Dock	FS Dock
18.	E-121 TBOT Brinnon Fire		Christopher Dolan	2	7/12	Lucerne	Lucerne
19.	E-98 TBOT Chelan County Sheriffs		Rich Magnussen	2	*O/S	FS Dock	FS Dock
20.							
21.	O-357 MEDIC 10		Sean Hendron	1	7/15	Lucerne	Lucerne
22.	O-308 EMT 4		Justin Dominguez	1	7/12	Lucerne	Lucerne
23.							
24.	TBD:						
25.							
7. Control Operations							
Task: Provide logistical needs for all fire activities on navigable waters.							
Purpose: Adequately support the needs of incident personnel in areas not accessible by roads.							
End state: Deliver supplies and personnel providing a timely, safe and effective operation.							
8. Special Instructions							
<ul style="list-style-type: none"> Follow instructions in IAP for requesting Ferry Tickets. All emergency medical requests for boats go through Pioneer Communications. * O/S – Operator Swaps As Needed, *CWN – Call When Needed, *M-Sa – Operator takes every Sunday off 							
9. Division / Group Communication Summary							
Function	Frequency	System	Channel	Function	Frequency	System	Channel
Command Repeater	See Comm Plan			Command	See Comm. Plan		
TAC				Air To Ground	See Comm. Plan		
Prepared by (Resource Unit Leader): Gary Duranceau			Approved by (Planning Section Chief) Mike Crawford			Date 7/4/24	Time 1900

AIR OPERATIONS SUMMARY ICS-220

Incident Name / Number
Pioneer / WA-SES-000173

Sunrise 05:08 **Sunset** 21:00 **Airport** Puumakin **S/T** 21:30

General Remarks, Safety Notes, Hazards, Air Operations Special Equipment, etc.:

- *Order All Aircraft over Command to Helibase.
- *Sanitize Buckets before changing water sources.
- *Clear drop area/line before initiating drop sequence.
- *Be mindful of all overhead and environmental hazards while working with aircraft.
- *All GPS coordinates to be collected in Degrees, Decimal, and Minutes (DMM)
- *** WINDS: return to helibase if winds become unmanageable.

*Aviation daily cost to: 2024.pioneer.finance@firenet.gov
*Aviation daily cost to: pioneerhelibase2024@gmail.com

Time Prepared
18:00

Date Prepared
7/4/2024

Prepared By
Finance@evg.ags&@hock-hocken - AOB

Operational Period - Date
7/5/2024

Operational Period - Time
0700-2100

Helibase Information

Pioneer HB
Location
47.51,96 N
119.56,56 W

Valley HB
Location
48.25,567 N
120.08,513 W

Pioneer HB (Chelan Airport)
Phone: 971-762-8575

Valley HB (Methow Valley Airport)
Phone: 971-727-7255

Helicopter Information

4/6779 TFR Surface to 10,000' In Effect - 24 Hours

Helispots

H1 | 48 10.755N / 120 31.803W
H5 | 48 12.162N / 120 35.447W
H10 | 48 14.050N / 120 36.461W
H12 | 48 13.325N / 120 35.908W
H14 (Stehekin A/P) | 48 20.75N / 120 43.25W
H15 | 48 08.754N / 120 29.813W
H16 | 48 07.74N / 120 29.55W
H25 | 47 59.212N / 120 16.526W

Request Procedure for This Aircraft:
Commo on Command, and A/G's

Short-Haul Platform:
MOCA N125CL, AS-350B3e
Operational Hours: 0900 to 2100
Order through AOB/Helibase/CWICC
HMGB: JP, Cell: (208) 830-4436

Medivac Ship Information
Medivac ship: N234BH, AS-350B3
Call Helibase to launch
Medical onboard: Paramedic, 1 EMT, and Litter Kit

EQUIPMENT/SUPPLIES
Commo Trailer (Pioneer) E-20
Hand Wash Station (Pioneer) E-47
Water Tender (Pioneer) E-77
Water Tender (Pioneer) E-14
Commo Trailer (Valley) E-150
Water Tender (Valley) E-158

Incident Frequencies	RX	Tone	TX	Tone	AM/FM
Air to Air Primary (A-8)	123.4000		123.4000		AM
Air to Air Secondary (A-9)	118.2750		118.2750		AM
A/G Pri Tactical (A-10)	169.1500		169.1500		FM
A/G Sec Operational (A-11)	168.4000		168.4000		FM
TOLC	166.6125		166.6125		FM
DECK	163.1000		163.1000		FM
COMMAND					See ICS 205 Communications Plan
VMED 29	155.3475	156.7	155.3475	156.7	FM
AIR GUARD	168.6250		168.6250	110.9	FM
National Flight Following	168.6500	110.9	168.6500	110.9	FM

FAA #	TYPE	Make/Model	Helibase	Start	Avail	Remarks
HB-16FH (A-22)	1	UH-60	Valley	0800	0900	BKT/LL
HB-161KA (A-24)	1	K-1200	Valley	0800	0900	BKT/LL
HB-344RA (A-45)	1	CH-47D	Valley	0800	0900	BKT/LL lnd/lease to
H-527 (H-811KA)	2	Bell 212HP	Chelan	0800	0900	BKT/LL
H-669H (A-98)	2	Bell 205 A1 **	Chelan	0800	0900	BKT/LL
H-234BH (A-99)	3	AS-350B3	Chelan	0800	0900	Recon/BKT/Paramedic
H-544AS (A-60)	3	AS-350B3	Chelan	0800	0900	HLCO/Recon
H-407RL (A-1)	3	Bell 407	Chelan	0800	0900	**Unavailable**
H-125CL	3	AS-350B3e	WEN	0800	0900	Short Haul, Recon

HELICOPTERS - Assigned

FAA #	TYPE	Make/Model	Airport	Avail	Remarks
H-205TK	2	Bell 205A	Chelan	0800	**Unavailable**

HELICOPTERS - GACC Prepo and Lend/Lease

FAA #	TYPE	Make/Model	Airport	Avail	Remarks
H-197GB	617	Commander	WEN	0800	Wenatchee IA (not assigned)
H-544AS (A-60)	4AS	AS350B3	Chelan	0900	Assigned HLCO

FIXED WING A/H LCO

Call Sign	Type	Make/Model	Base	Start	Avail	Remarks
UR-31	3	AltaX	Lucerne	0600	2200	IR/PSD
UR-45 Baker River HS	4	Anafi	DIV S	0600	2200	IR

1. Incident Name:		2. Date/Time Prepared:		3. Operational Period:	
PIONEER		Date: 07/04/2024 Time: 1600		Date/Time From: 07/05/2024 0600 Date/Time To: 07/06/2024 0600	

4. Basic Radio Channel Use:										
Zone Group	Ch #	Function	Channel Name/Trunked Radio	Assignment	RX Freq	RX Tone/NAC	TX Freq	TX Tone/NAC	Mode (A, D, or M)	Remarks
	1	TACTICAL	TAC 1	DIV A & S	168.0500	123.0	168.0500	123.0	A	
	2	TACTICAL	TAC 2	DIV D	168.2000	123.0	168.2000	123.0	A	
	3	TACTICAL	TAC 3	DIV Z	168.6000	123.0	168.6000	123.0	A	
	4	TACTICAL	TAC 4	DIV H / CONT	166.7250	123.0	166.7250	123.0	A	
	5	TACTICAL	TAC 5	ROADS	166.7750	123.0	166.7750	123.0	A	
	6	TACTICAL	TAC 6	BOAT	168.2500	123.0	168.2500	123.0	A	
	7	COMMAND	CMD 7	ALL	168.4750	123.0	165.4000	123.0	A	CHELAN BUTTE
	8	COMMAND	CMD 8	ALL	169.5375	123.0	164.7125	123.0	A	OLD MAID MT
	9	COMMAND	CMD 9	ALL	170.4500	123.0	168.1000	123.0	A	MOORE MT
	10	COMMAND	CMD 10	ALL	170.0125	123.0	165.2500	123.0	A	SLIDE RIDGE
	11	COMMAND	CMD 11	ALL	170.4125	123.0	165.9625	123.0	A	FOX PEAK
	12	TACTICAL	A/G PRI	ALL DIVS	169.1500	000.0	169.1500	000.0	A	
	13	AIR TO GROUND	A/G SEC	ALL DIVS	168.4000	000.0	168.4000	000.0	A	
	14	AIR TO GROUND	A/G 3	ALL DIVS	166.6125	000.0	166.6125	000.0	A	TAKE OFF LANDING CHANNEL
	15	AIR TO GROUND	VMED 29	ALL DIVS	155.3475	156.7	155.3475	156.7	A	AIR EMS COORDINATION
	16	AIR TO GROUND	AIRGUARD	ALL DIVS	168.6250	000.0	168.6250	110.9	A	EMERGENCY AIRCRAFT CONTACT

5. Special Instructions: 24 hour staffing: PIONEER COMMUNICATIONS PHONE NUMBER: (208) 891-7948 / CURRENT CLONE "PIE 6-21"

6. Prepared By COML		Name: SETH BAUMGARTEN		Signature: <i>Seth Baumgarten</i>	
ICS 205		IAP Page		Date/Time: 07/04/24 1600	

1. Incident Name:		2. Date/Time Prepared:		3. Operational Period:	
PIONEER Branch IV & V		Date: 07/04/2024 Time: 1600		Date/Time From: 07/05/2024 0600 Date/Time To: 07/06/2024 0600	

4. Basic Radio Channel Use:										
Zone Group	Ch #	Function	Channel Name/Trunked Radio	Assignment	RX Freq	RX Tone/NAC	TX Freq	TX Tone/NAC	Mode (A,D, or M)	Remarks
	1	TACTICAL	TAC 1	DIV A & S	168.0500	123.0	168.0500	123.0	A	
	2	TACTICAL	TAC 2	DIV D	168.2000	123.0	168.2000	123.0	A	
	3	TACTICAL	TAC 3	DIV Z	168.6000	123.0	168.6000	123.0	A	
	4	TACTICAL	TAC 4	DIV H / CONT	166.7250	123.0	166.7250	123.0	A	
	5	TACTICAL	TAC 5	ROADS	166.7750	123.0	166.7750	123.0	A	
	6	TACTICAL	TAC 6	BOAT	168.2500	123.0	168.2500	123.0	A	
	7	TACTICAL	A/G PRI	ALL DIVS	169.1500	000.0	169.1500	000.0	A	
	8	AIR TO GROUND	A/G SEC	ALL DIVS	168.4000	000.0	168.4000	000.0	A	
	9	AIR TO GROUND	A/G 3	ALL DIVS	166.6125	000.0	166.6125	000.0	A	
	10	COMMAND	CMD 10	ALL	170.0125	123.0	165.2500	123.0	A	SLIDE RIDGE
	11	COMMAND	CMD 11	ALL	170.4125	123.0	165.9625	123.0	A	FOX PEAK
	12	COMMAND	CMD 12	ALL	170.6875	123.0	166.5750	123.0	A	GOAT MOUNTAIN
	13	LOCAL RPTR	GOAT	ALL	172.3500	146.2	165.0125	118.8	A	GOAT MOUNTAIN
	14	LOCAL RPTR	MCLUR	ALL	172.3500	146.2	165.0125	103.5	A	McCLURE MTN
	15	AIR TO GROUND	VMED 29	ALL DIVS	155.3475	156.7	155.3475	156.7	A	AIR EMS COORDINATION
	16	AIR TO GROUND	AIRGUARD	ALL DIVS	168.6250	000.0	168.6250	110.9	A	EMERGENCY AIRCRAFT CONTACT

5. Special Instructions: 24 hour staffing: PIONEER COMMUNICATIONS PHONE NUMBER: (208) 891-7948 / CURRENT CLONE "IV"

6. Prepared By COM1	Name: SETH BAUMGARTEN
	Signature: <i>Seth Baumgarten</i>

ICS 205	IAP Page
	Date/Time: 7/4/24 1600

1. Incident Name:		2. Date/Time Prepared:		3. Operational Period:						
PIONEER IA N Chelan		Date: 07/04/2024 Time: 1600	Date/Time From: 07/05/2024 0600	Date/Time To: 07/06/2024 0600						
4. Basic Radio Channel Use:										
Zone Group	Ch #	Function	Channel Name/Trunked Radio	Assignment	RX Freq	RX Tone/NAC	TX Freq	TX Tone/NAC	Mode (A,D, or M)	Remarks
	1	LOCAL DISPATCH	Fire 1 Rp		154.4300	110.9	153.8900	D051	A	
	2	COMMAND	North Com Rp		155.3550	100.0	150.7900	100.0	A	
	3	TACTICAL	Goat Tac Rp		159.0675	110.9	153.8000	100.0	A	GOAT MNT
	4	TACTICAL	Orange		154.2650	107.2	154.2650	107.2	A	
	5	TACTICAL	Black		154.3400	151.4	154.3400	151.4	A	
	6	TACTICAL	DNR Common		151.4150	103.5	151.4150	103.5	A	
	7	LOCAL RPTR	DNR Chelan Rp		159.2250	156.7	151.4750	156.7	A	CHELAN BUTTE
	8	AIR TO GROUND	DNR AVG 1		159.2700	103.5	159.2700	103.5	A	
	9	LOCAL RPTR	Butte Tac Rp		155.1225	192.8	159.0675	162.2	A	CHELAN BUTTE
	10	TACTICAL	FS Win Tac		167.5500	000.0	167.5500	000.0	A	
	11	LOCAL RPTR	FS Goat Rp		169.8750	146.2	172.3500	118.8	A	GOAT MNT
	12	LOCAL RPTR	FS Slide Rp		173.0500	146.2	164.9125	141.3	A	SLIDE RIDGE
	13	AIR TO GROUND	FS AVG 40		167.4500	000.0	167.4500	000.0	A	
	14	TACTICAL	FS TAC		168.2000	000.0	168.2000	000.0	A	
	15	LOCAL RPTR	FS BADGER Rp		173.0500	146.2	164.9125	127.3	A	BADGER MNT
	16	TACTICAL	RED NET		153.8300	000.0	153.8300	000.0	A	
5. Special Instructions: 24 hour staffing: PIONEER COMMUNICATIONS PHONE NUMBER: (208) 891-7948 / CURRENT CLONE "IA N CHELAN"										
6. Prepared By COM1				Name: SETH BAUMGARTEN	Signature: <i>Seth Baumgarten</i>					
ICS 205				IAP Page	Date/Time: 7/4/24 1600					

Safety Message

Pioneer Fire – 7/05/2024

Shift: Day

Entrapment Avoidance- New Findings and Implications for our Daily Operations

The well-known common denominators of fatal and near-fatal fires identified by Wilson- which focus on the fire environment- and have been incorporated into our training and operational doctrine: IRPG pg. 3

- On relatively small fires or deceptively quiet sectors of large fires.
- In relatively light fuels, such as grass, herbs, and light brush.
- When there is an unexpected shift in wind direction or in wind speed.
- When fire responds to topographic conditions and runs uphill.

Additional factors have recently been identified through research and comprehensive statistical analysis of a large set of fatal and near-fatal entrapment events:

- High fire danger
- **Communication issues**
- **Failure to identify adequate escape routes and safety zones**

Notably, two of the three newly identified factors are human factors... unrelated to the terrain or weather, or fire size/complexity (**bolded above**). We cannot change the fire environment factors- we are either present in those areas, or we are not. We have mitigations for the fire environment factors that allow us to adapt to these conditions- to mitigate to varying degrees- but we cannot change the conditions or factors themselves. However, the two human factors are things we can change. They are completely within human control. If you find yourself operating in an environment where the common denominator fire environment factors are stacking up against you, pay extra attention to the human factors- the things you have the greatest ability to affect.

1. If your communications are not clear, smooth, reliable, dependable, or are in any way questionable- strongly consider not engaging or disengaging. Operating with poor, or unreliable, or just barely “good enough” communications when the other factors are stacking up has been identified as **adding substantial risk** to you and your personnel.
2. Make extra efforts to identify and make known multiple escape routes and safety zones. Mark them. Invest the time to understand the real- life travel time on the routes for your slowest person/resource. Allow extra time for possible mechanical issues and/ or injuries slowing your exit time on the routes. Engaging before confirming the adequacy of escape routes and safety zones- and failing to adjust throughout the shift - when the other factors are stacking up has been identified as **adding substantial risk** to you and your personnel.

Safety Officers: Matt Broyles, Eric Brown. SOURCE: USFS RMRS Science Spotlights/ Research Needs for Wildland Firefighter Entrapments: May 28, 2020.

PIONEER FIRE HUMAN RESOURCES MESSAGE

July 5, 2024
Leadership in Wildland Firefighting

Wildland firefighting requires a unique blend of physical and mental toughness, technical skills, and effective leadership. As a wildland firefighter, leaders play a crucial role in ensuring the safety of their team and the success of the firefighting operation.

Key Leadership Skills Include:

Communication: Clear and concise communication is vital in wildland firefighting. Leaders must ensure that all team members understand their roles, responsibilities, and the plan of action. This includes communicating with dispatchers, other teams, and incident commanders.

Risk management: Wildland firefighting involves inherent risks, and leaders must be able to assess and mitigate these risks effectively. This includes identifying potential hazards, developing contingency plans, and making decisions that prioritize safety.

Emotional intelligence: Wildland firefighting is emotionally demanding, and leaders must be able to manage their own emotions and those of their team members. This includes recognizing stress signs, providing emotional support, and promoting a positive team culture.

Adaptability: Wildland fires are unpredictable, and leaders must be able to adapt quickly to changing conditions. This includes being flexible with plans, adjusting to new information, and making decisions based on real-time data.

Accountability: Leaders are responsible for the actions of their team members, and they must be accountable for their own decisions and actions. This includes taking ownership of mistakes, learning from failures, and implementing corrective actions.

By developing these key leadership skills, wildland firefighters can build trust with their teams, make informed decisions under pressure, and ultimately save lives and protect property.

"If your actions inspire others to dream more, learn more, do more and become more, you are a leader."

Rhonda Marchand, HRSP-T

Margaret Dietrich, HRSP and Training Specialist 360-701-3154, mvdietrich2@gmail.com

FINANCE MESSAGE

Finance Email: 2024.pioneer.finance@firenet.gov

Finance Phone: 484-501-1835

This incident requires electronic documentation. Please email your time to the address above. Scanned PDF's please, no .JPG's. Feel free to call finance for help if needed. Scanners are also available at ICP.

Required Documents

Overhead, Agency Crews & Cooperators	Contract Resources
Finance docs needed: Resource Order, Manifest, Cooperative Agreement, Casual Hire Form w/ECI# (as applicable)	Finance docs needed: Resource Order, Manifest, Full Contract/Agreement, Certifications <i>(if required)</i> Pre-Inspection
Daily: CTRs, Shift Tickets CTRs should be named as: CTR_RO#_YYMMDD-DD (Ex: CTR_O235_240605-07) Electronic CTR available! Use QR code on front cover	Daily: CTRs, Shift Tickets, receipts (claims, etc.) NOTE: Document travel times and odometer readings Shift Tickets should be named as: ST_RO#_YYMMDD-DD (Ex: ST_E5_240623-27) Electronic shift ticket available! Use QR code on front cover
Demob: Signed OF-288; Signed OF-286	Demob: Contractor Evaluations, Shift Tickets, receipt(s) for Addition/Deductions, Post-Inspection, Signed OF-286
<p>"H-Pay"- Entitlement to Hazardous Pay Differential (5 CFR 550.904) - Hazard pay MUST be supported by a justification. If justification is not provided, you chance losing your entitlement.</p>	<p>Please call finance regarding issues with your time:</p> <p>No one on List today, any questions for Finance, please email us. Thank You.</p>

Incident Name: **Pioneer**
 Incident Number: **WA-SES-000173**
 Financial codes:
 WA DNR – **221-LDW**
 DOI – **RZ79**
 USDA – **PNRZ79 (1522)**

Please make sure you check in using QR code on the front of the IAP and then email your time daily.
THANK YOU!!

Resource Advice

Lead READ: Eireann Pederson 360-854-8197, eireann.pederson@usda.gov

REAF: Brigitte Ranne 509-663-6118, brigitte.ranne@usda.gov

REAF: Hector Rodriguez 509-393-5379, Hector.Rodriguez3@usda.gov

REAF: Carrissa Camenson 360-899-7147, carissa.camenson@usda.gov



Resource Guidelines

MIST for Spike Camp and Lucerne Forward Operating Base Management

- Employ minimum impact suppression tactics (MIST) where feasible, especially in remote or sensitive areas.
- If spike camps are necessary, use existing, or previously impacted campsites where available. If existing campsites are not available; use your local resource advisor to help identify the most resilient sites in rocky or sandy soils. Avoid camping in wet meadows, along streams, or on lake shores.
- Store food properly so that it is not accessible to wildlife. Consider hanging food in trees at least 15 feet off the ground and 5 feet from the trunk of the tree, or store food in sealable containers. Store food away from the campsite (300 feet is ideal) to reduce the risk of human and bear (and rodent!) conflicts.
- Do not let garbage and food scraps accumulate in camp. All garbage and food scraps need to be removed from the camp ASAP and before leaving the site.
- Minimize disturbance to land in preparing bedding and campfire sites. Do not clear vegetation, trench, or excavate a flat spot to create bedding sites.
- Do not use nails in trees. Don't construct camp furniture.
- If a campfire is built for warmth in the evening, build either a pit or mound fire. Use dead and down firewood. Use small diameter wood that burns down more cleanly. Don't burn plastics or aluminum - pack it out with the rest of the camp garbage.
- In small spike camp situations (not Lucerne), individuals should use the "cat-hole" method of disposing of human waste. Toilet seats should be located a minimum of 200 feet from water sources. Holes should be dug 6-8 inches deep.
- In large or long term spike the camps use helicopters, boats, or pack stock to deliver portable backcountry latrines and remove human waste if necessary. If the camp does not have adequate pack, boat, or air support for human waste management, establish community latrines well away from water sources and common areas. Use human waste bags, if necessary

Dipping and Drafting

- No cross-dipping between water bodies. All buckets or snorkels should be cleaned, inspected, and dried in the sun if they must be used between lakes. Dipping in small lakes must be pre-approved by the READ or AA.
- When drafting, use already disturbed areas for stream access (road crossings, dispersed campsites) to reduce the need for riparian vegetation clearing.
- Use screens (3/32" inch) for all pumping operations.
- Use containment pads and basins under pumps and fuel cans. Ensure a spill kit is present with every operating pump.

Invasive Species

- The fire is burning within an infestation of common crupina, a WA State Class A Noxious weed. Prevent spread of crupina off site – plan to wash hose and other equipment. Request fire fighters brush boots before boarding boat or before entering National Park Service Land.
- Inspect slings and remove all plant/soil material prior to use.
- Ensure all camps, staging areas, helispots and cargo areas are free of invasive plants to prevent spread to un-infested areas.
- Weed wash all vehicles, including boats, when they arrive to the incident and when demobed.

Fisheries /Aquatic Recommendations

- If trees must be felled in riparian areas for suppression or safety reasons, fell them toward streams where possible and minimize bucking where possible.
- Non-mechanized suppression activities are recommended within Riparian Reserves (150-300 ft from stream channel). For example, consider hand lines instead of dozer lines when feasible.

Retardant Use

- Retardant avoidance areas are present in the fire suppression area for both aquatic and terrestrial species.
- Track all retardant drops – locations and amounts.
- Report all mis-applications ASAP to READ. Monitoring and reporting of misapplications is required.

Wet Meadows

- No line or other disturbance in wet meadows in the Summer Blossom area (east of South Navarre campground above and below the 8200 road) and at Coyote and Poison Springs at the headwaters of their respective creeks.

Dry Meadows

- Minimize disturbance from staging and parking areas in dry meadows. These areas recovery slowly and are vulnerable to invasive plant infestation.

White Bark Pine

- Avoid cutting white bark pine whenever possible. Needles of 5 keep it alive! Ask READ for help with ID.

Burnout operations

- Plan to protect whitebark pine of all ages and mature cold and moist forest during burnouts. READ consultation and line officer approval is required for burn plans that include these forest types.
- During burnouts modify firing to retain large trees, large snags and large down wood in forests whenever possible.
- Minimize total acres burned in burnouts.
- Incorporate typical resource protection measures used in RX burning whenever it is safe and practical to do so (such as retention of green islands in moist areas).
- Provide a map of areas that were burned as part of the burnout operation (for use in emergency consultation).
- If cultural resources are discovered during suppression activities, leave on site and notify READ.

LOGISTICS NOTES

Pioneer Fire ICP

Breakfast 0530 – 0900
Lunch @ Refer Trailer – 0500 - 2100
Dinner 1800 -2100
Shower 0500 – 1200 & 1400 – 2200
Supply 0600 – 2200
Ground Support 0700 – 2100
Fuel Tender 0700 – 2100
Weed Wash 0700 – 1400 & 1600 – 2000

FOB Lucerne

Breakfast 0600 - 0900
Lunch – Pickup with Breakfast
Dinner 2030 – 2130
Shower 0500 – 1200 & 1400 – 2200
Supply 0600 – 2200

Ground Support Contact Numbers:

Casey Glade 435-704-4702 Joe Keady 541-733-6701

Ordering Information

Submit all orders on General Message Form 213 to the following email address.

2024.pioneer.ordering@firenet.gov

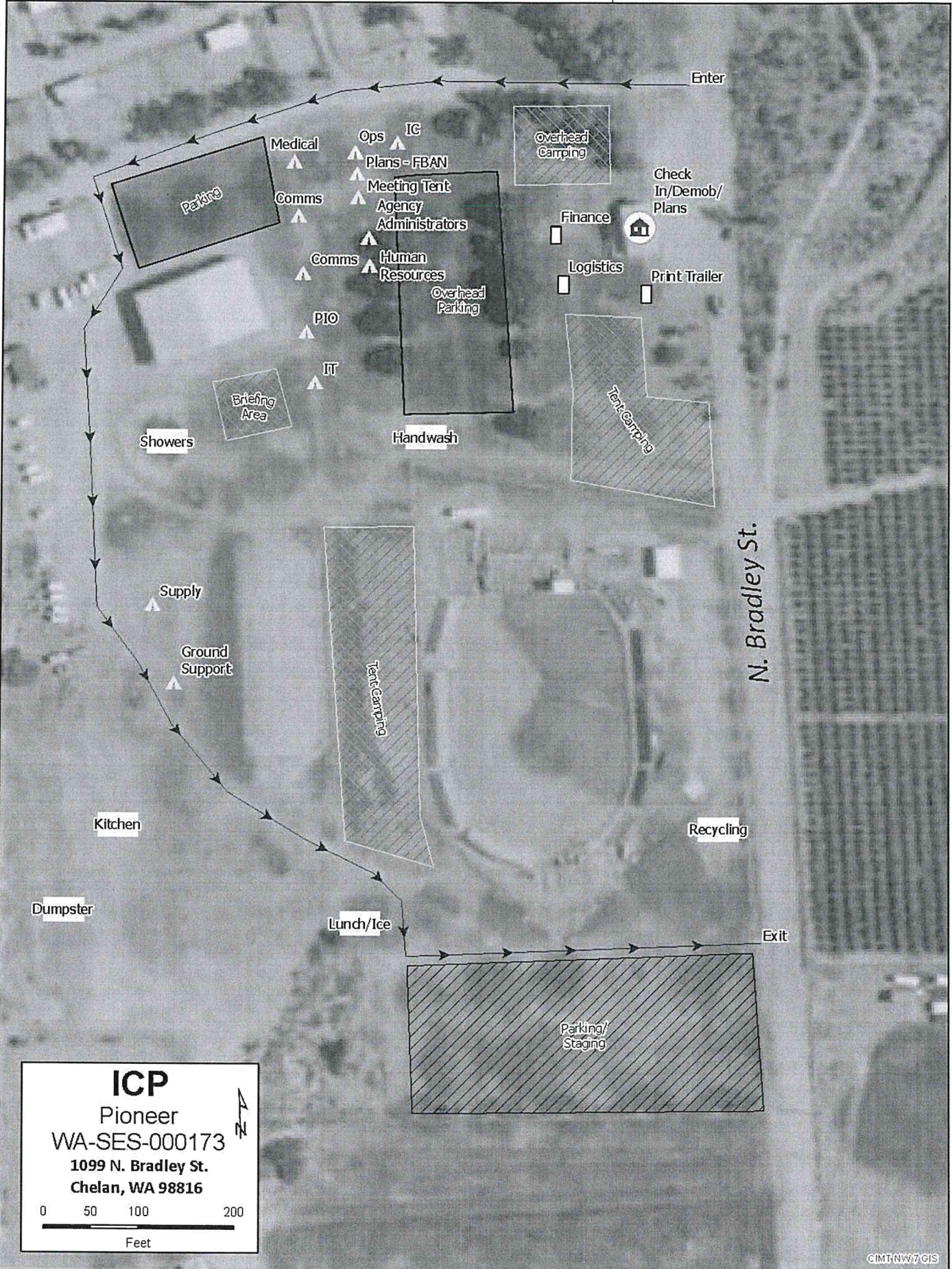
Ordering Manager Noe Reyes 484-501-1821

ICP Camping & Parking Under Maple Trees

The sticky oily substance dripping from the maple trees next to Main Street was determined to be insect residue, sometimes called "Honeydew". This substance is nontoxic and has the potential to damage cars and tents if not removed quickly. Avoid parking or camping under the maple trees to prevent potential damage.

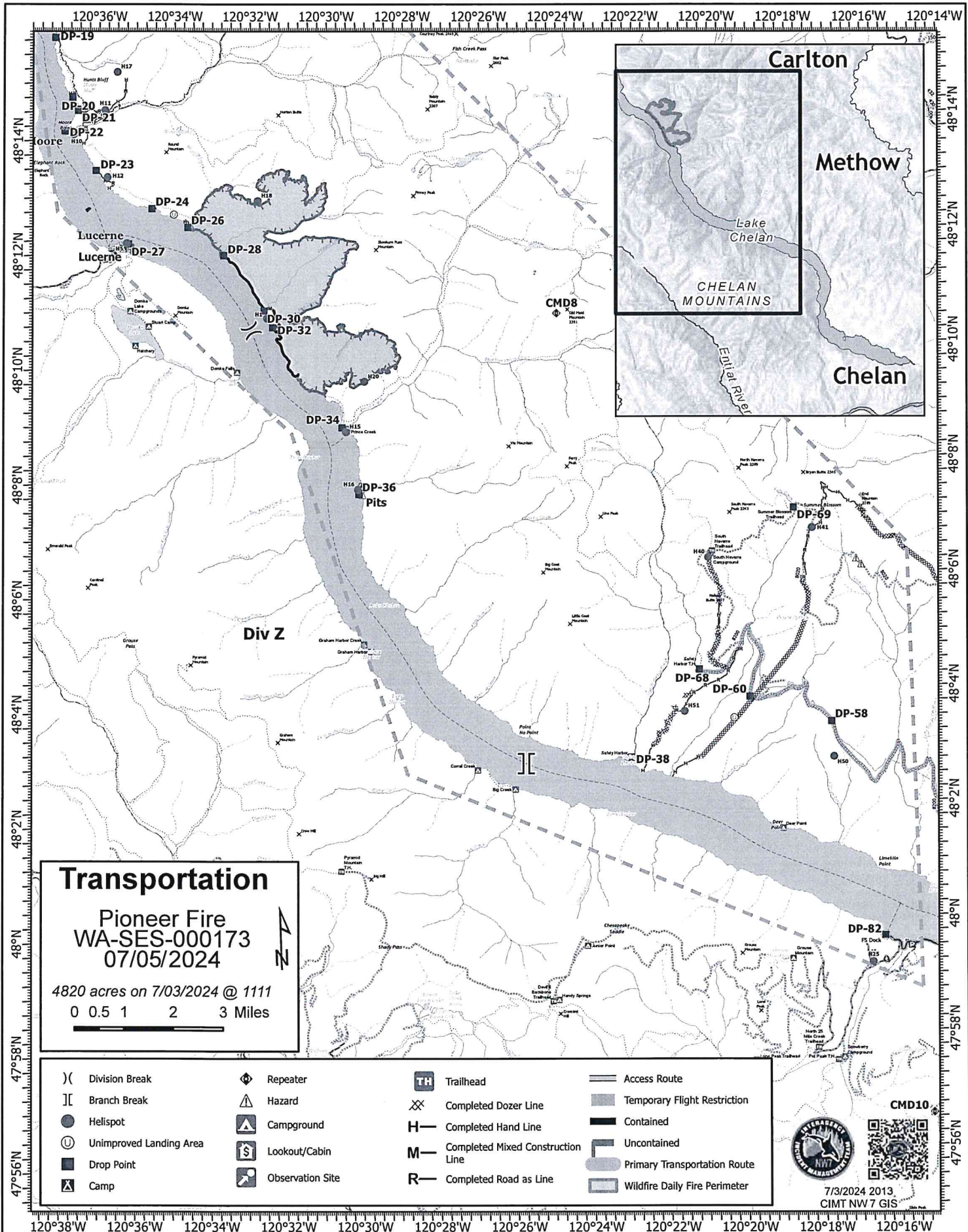
Recycling Scorecard on Incident

Plastic Bottles	801-lbs	Aluminum Cans	225-lbs
Cardboard	10,784-lbs	Office Paper	776-lbs
Plastics 1 & 2	142-lbs	Glass	12-lbs
Batteries	252-lbs	Food Composting	9,601-lbs
Cooking Oil	236-gal	Food Donations	349-lbs
Trash	21,990-lbs	Recycling	25,440-lbs



ICP
 Pioneer
 WA-SES-000173
 1099 N. Bradley St.
 Chelan, WA 98816

0 50 100 200
 Feet



SHORT-HAUL OPERATIONS

CAPABILITIES

- During an operational Short-Haul the helicopter is capable of inserting Short-Haulers into an area with tight canopy cover and/or technical terrain.
- Haul line lengths range from 100 feet to 350 feet.
- Short hauler and/or medical gear can be delivered to the medical scene even if extraction by short-haul is not necessary.

ORDERING

- EMT or Medical Incident IC determines medical extraction is required.
- Follow local established procedures and/or Medical Incident Report (MIR) in the IRPG.
- Confirm aircraft type, call sign, estimated time of arrival and frequency.
- Give site selection information when ordering: hazards (i.e. ash, smoke, snags, aerial), tree height, terrain, and patient transport configuration (supine or seated position). Repeat hazards and give updated weather conditions as well as brief patient update to responding helicopter.

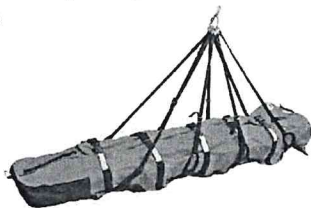
PROCESS: The helicopter will fly to the coordinates provided. They will make contact with ground personnel on scene with the patient using an identified air-to-ground frequency. The helicopter will complete a short-haul recon and size up, gather patient update information and then fly to a landing zone (LZ) to configure for short-haul operations. The helicopter will be monitoring the appropriate air-to-ground, air guard and victor frequencies. From this point, ground resources should only contact the helicopter in case of an emergency. During the insertion and extraction process ground personnel must be clear of the area.

ON SCENE – EXPECT THE FOLLOWING

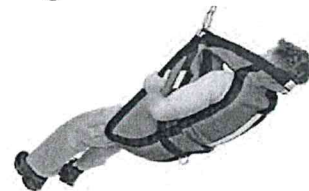
- 1 or 2 rescuers (at least one qualified as an EMT or higher)
- Backboard (if needed and not already on scene)
- All equipment necessary for patient extraction

The Patient Extraction Bag accommodates most backboards.

- A patient on a backboard, TRS, SKED or litter will be inserted into the



The Seat Harness is used for patients not requiring the use of a backboard.





Team 7 Line Supply Order		Order #			
Date & Time	Deliver To Location/Time	Delivery Method			
Order Placed	(Division, Drop Point, Hell Spot, Lat/Long)	(Driver, Helo, DIVS to P/U)			
Order received in Communications (name & time)		Ordered by (name and Position)			
Order received in Supply by (name & time)		Ground Contact			
Order received in Transportation by (name & time)		Contact Freq.			
Order received in Helibase by (name & time)		Special Instructions/line length/ elevation			
Order shipped to line by (name & time)					
#	Item	Amount	#	Item	Amount
1	Meals #1842	MRE 12/Cs	33	Bath in a Bag, Large #0712	
2	Water #0048	5 gal cubies	34	Bath in a Bag, Small #0206	
3	Gatorade	24/Cs	35	Coffee Kit #0480	
4	Batteries, AA #0030	24/pg	36	Coffee 3lb Can	
5	Batteries, AAA #7471	24/pg	37	Folda-Tank 1500 gal #0664	
6	Gas Unleaded	5 gal	38	Pumpkin 3000 gal. #0568	
7	2 Cycle Oil #7724	5 gal mix	39	Backpack Pump #0909	
8	2 cycle Oil #3444	1 Gal mix	40	Mark III pump + Kit #0148	
9	Diesel	5 gal	41	Lightweight Pump + Kit #8606	
10	Bar Oil #1880	1 Gal	42	Volume Pump #1222	
11	Bar Oil #1869	1 Qt	43	Hose 1 1/2" #1239 100' lg	
12	Shovel #0171		44	Hose 1" #1238 100' lg	
13	Pulaski #0146		45	Hose 3/4" #1016 50' lg	
14	McLeod #0296		46	Reducer 1 1/2" to 1" #0010	
15	Combi #1180		47	Reducer 1" to 3/4" #0733	
16	Chainsaw Kit #0340		48	Gated "y" 1 1/2" #0231	
17	Drip Torch Empty #0241		49	Gated "y" 1" #0259	
18	Fussee #0105		50	Gated "y" 3/4" #0904	
19	Sleeping Pad #1566		51	In-line Tee 1 1/2" to 1" #0230	
20	Sleeping Bag #0022		52	Nozzle KK 1 1/2" #1082	
21	Fly Tent #0070		53	Nozzle KK 1" #1081	
22	Plastic Sheeting #0143		54	Nozzle 3/4" #0136	
23	Parachute Cord #0533		55	Nozzle, Forester 1" #0024	
24	Fiber Tape #0222		56	Sprinkler kit #1048	
25	Garbage Bags #0021		57		
26	Leadline 3000 lbs #0528		58		
27	Cargo Net 3000lb #0531		59	Team 7 Hose Lay Kit	
28	Swivel 3000lb #0526		60		
29	Slingable Bg 72 Gal Bilivet #0426		61		
30	Foam 5 gal. #1145		62		
31	Toilet Paper #0142		63		
32			64		

Item	Amount
1 1/2 in. synthetic hose	1000 ft.
1 in. synthetic hose	500 ft.
3/4 in. garden hose	500 ft.
1 1/2 in. gated wye	5 ea.
1 1/2 in. - 1 in. reducer	5 ea.
1 in. combination nozzle	5 ea.
1 in. - 3/4 in. reducer	5 ea.
3/4 in. valve, shutoff, ball	5 ea.
3/4 in. nozzle	5 ea.
3/4 in. gated wye	5 ea.

Item	Amount
Sprinkler head w/ couplings	4 ea.
3/4 in. garden hose	250 ft.
1 1/2 x 1 1/2 x 1 tee	4 ea.
1 x 3/4 reducer	4 ea.
1 1/2 in. - 1 in. reducer	1 ea.
3/4 in. gated wye	2 ea.
3/4 in. valve, shutoff, ball	4 ea.
3/4 in. nozzle	1 ea.
3/4 in. pressure regulator	4 ea.
3/4 in. nozzle, plastic 60 GPM	1 ea.
10 in. adjustable wrench	1 ea.

LINE ORDER PROCESS

Line orders from the field should go through the Communication Unit via radio (primary) or 24-hour phone number shown on the cover of the IAP. All other supply requests should be submitted in person to the Supply Unit.

Check In Message

- Please complete the virtual check-in process via the QR code on the front cover.
- You are not checked in until you provide the following:
 - 1) Red Cards
 - 2) Roster/Manifest
- Please email documents to: 2024.pioneer.checkin@firenet.gov

Any Questions:

Phone: 509-661-5372

Email: 2024.pioneer.checkin@firenet.gov

Demob Message

- Fliers complete the "Air Travel Request" via the QR code on the front cover 72 hours prior to flight date.
- Return supplies to the Cache.
- Return radios, antennas, etc., to Communications.
- All contract equipment and vehicles driven in fire area will need to do weed wash.
- Contact Finance about closing out your paperwork.
- Once the above items have been completed, SCAN the QR code on the front cover and complete the demob questions.

Any Questions:

Phone: 509-661-5376

Email: 2024.pioneer.demob@firenet.gov



Last Work Day & Demob Report

Incident: PIONEER US-WA-SES-000173

Questions ?? - Jay at (509) 661-5376

Demob 07/05

CREWS

CRW1 C-13 CRW1 - VALE IHC

OVERHEAD

EMPF O-67 LATHROP, ADAM MATTHEW
THSP O-200 RICE, TYLER
THSP O-204 JONES, RUSS

LWD: 07/05 and Demob 07/06

OVERHEAD

ASGS O-102 MOORE JR, DAVID A
FMOD O-186 FMOD - FALLER MODULE - KINTNER TIMBER COMPANY LLC
RCDM O-205 EVERSAUL, MARTIN LEE
STAM O-131 MERAGER, JONATHAN

LWD: 07/06 and Demob 07/07

CREWS

CR2I C-18 CR2I - NW - COLVILLE NF - MOB 3

EQUIPMENT

HOSU E-20 HOSU - WESTERN WILDFIRE LLC - 206512

OVERHEAD

ARCH O-168 WINGATE, ERNEST
DIVS O-174.77 METZGER, ERIC
FACL O-227 DROTT, PETER NICHOLAS
FDUL O-174.81 CODY, JOHN F
FELB O-184 COZART, MARTIN JOHN
FMOD O-185 FMOD - FALLER MODULE - BROTHERS FIRE LLC - MOD 01 -
HEQB O-330 RAY, ASA WILLIAM
HEQB O-337 HUMPHERYS, BRANDON LEE
OPBD O-233 GOLDMAN, ROGER HAROLD
PIO1 O-105 JOHNSON, J MICHAEL
REAF O-166 SPAAK, JORDAN LEE
TFLD O-183 HAMMAN, HARLEY
WFM2 O-218 WFM2 - OLYMPIC WFM

MEDICAL PLAN (206 WF)

1. Incident/Project Name			2. Operational Period				
Pioneer Fire			Date/Time: 07/05/24 0700-2100				
3. Ambulance Services							
Name	Complete Address	Phone	Advanced Life Support (ALS)				
			Yes	No			
Lake Chelan EMS	Chelan, WA	911	X				
Douglas/Okanagan County Fire	Brewster, WA	911		X			
Aero Methow EMS	Twisp, WA	911	X				
4. Air Ambulance Services							
Name	Phone/Channel	Frequency, Type of Aircraft & Capability					
Life Flight - Brewster	1-800-232-0911 911	VMED 29, Rotor, ALS, 24 hr					
Airlift NW - Wenatchee	1-800-426-2430 911	VMED 29, Rotor, ALS, 24 hr					
Medivac Ship	Command 7,8,9,10,11,12 (Linked)	VMED 29, Rotor, BLS, Daytime					
Mount Rainer Short Haul	Command 7,8,9,10,11,12 (Linked)	VMED 29, Rotor, BLS, Daytime, Short Haul					
Snohawk 10 - Snohomish	1-800-258-5990 911	VMED 29, Rotor, ALS, Daytime, Hoist					
Spokane County Hoist - Spokane	1-509-532-8930 911	VMED 29, Rotor, ALS, 24 hr, Hoist Daytime Only					
5. Hospitals							
Name	Degrees Decimal Minutes	Travel Time From Fire		Phone	Helipad		Level of Care
		Air	Boat		Yes	No	
Lake Chelan Health 110 S. Apple Blossom Drive Chelan WA	Lat: 47° 50' 20 N	30 Min	3 Hr	509-683-2474		X	Level IV Trauma
	Long: 119° 59' 20 W						
Central Washington Hospital (Confluence Health Central Campus) 1201 S. Miller Wenatchee WA	Lat: 47° 24. 43 N	1 Hr	4 Hr	509-433-3115	X		Level III Trauma
	Long: 120° 19. 28 W						
Harborview Medical Center 325 9 th Ave Seattle WA	Lat: 47° 36. 24 N	1.5 Hr	6 Hr	206-744-4025	X		Level I Trauma Burn Center
	Long: 122° 19. 45 W						
ICP	EMS Responders & Capability:		Mariann Turley Cass Monroe MEDIC 13		MEDL/AEMT MEDL(T)/EMTF EMPF		509-496-9370 509-724-0843 248-752-5511
	Equipment Available on Scene:		ALS Kit, AED, O2, OTC meds				
	Medical Emergency Channel:		Command 7, 8, 9, 10, 11 (Linked)				
	ETA for Ambulance to Scene:						
	Air:		NA				
	Ground:		15 Min				
	Approved Heli-Spot:		NA				
	Lat:		NA				
Long:		NA					
LUCERNE FOB	EMS Responders & Capability:		Londa Van Kirk MEDIC 6 Steve Medina EMT 4 Justin Dominguez MEDIC 10 Sean Hendron		MEDL/EMTF (Lucerne FOB) (Air Medical) (Boat Medical) (Boat Medical)		360-815-7645 360-556-9568 509-741-0611 443-851-2014
	Equipment Available on Scene:		ALS Kit, AED, O2, OTC meds				
	Medical Emergency Channel:		Command 7, 8, 9, 10, 11 (Linked)				
	ETA for Ambulance to Scene:						
	Air:		2 hr				
	Water/Ground:		3 hr				
	Approved Heli-Spot:						
	Lat:		H5 48° 12.1624' N				
Long:		120° 35.4476' W					
BRANCH I	EMS Responders & Capability:		MEDIC 8 Rick Kelly EMT 5 Dave Repnik MEDIC 12 Ethan Biederman		(DIV Z) (DIV A) (DIV A)		509-290-3922 509-881-4771 513-882-2837
	Equipment Available on Scene:		ALS Kit, Monitor/Defib, O2				
	Medical Emergency Channel:		Command 7, 8, 9,10, 11 (Linked)				
	ETA for Ambulance to Scene:						
	Air:		2 hr				
	Water/Ground:		3 hr				
	Approved Heli-Spots:						
	H1 48° 10.813' N		H11 48° 14.492' N		H15 48° 08.754' N		
	120° 31.925' W		120° 35.922' W		120° 29.813' W		
	H10 48° 14.099' N		H12 48° 13.381' N		H16 48° 07.744' N		
120° 36.782'W		120° 35.919' W		120° 29.541' W			
Lat:		NA					
Long:		NA					

MEDICAL PLAN (206 WF)

BRANCH II	EMS Responders & Capability:	REMS 2 Brayden Kirk + 3 (DIV D) 509-264-8203 Jed Getman MEDL(T)/AEMF (Stehekin FOB) 541-391-3243
	Equipment Available on Scene:	ALS Kit, Monitor/Defib, O2, Rescue Gear
	Medical Emergency Channel:	Command 7, 8, 9, 10, 11 (Linked)
	ETA for Ambulance to Scene:	
	Air:	2 hr
	Ground:	3 hr
	Approved Heli-Spot:	
	Lat:	H14 48° 20.760' N
Long:	120° 43.242' W	
BRANCH IV	EMS Responders & Capability:	MEDIC 9 Benjamin McCall (DIV H) 360-420-6492 AMBO 2 Anna Reynolds (DIV H) 509-768-5519
	Equipment Available on Scene:	ALS Kit, Monitor/Defib, O2
	Medical Emergency Channel:	Command 7, 8, 9, 10, 11,12 (Linked)
	ETA for Ambulance to Scene:	
	Air:	2 hr
	Ground:	3 hr
	Approved Heli-Spot:	NA
	Lat:	NA
Long:	NA	
BRANCH V	EMS Responders & Capability:	MEDIC 5 Brian Linacre (CONTINGENCY) 301-781-7990 MEDIC 7 Steve Drab (CONTINGENCY) 406-600-2059 MEDIC 11 Savannah Mclaughlin (DIV S) 435-590-4952 REMS 1 Ray Storm + 4 (DIV S) 415 637-0491
	Equipment Available on Scene:	ALS Kit, Monitor/Defib, O2, Rescue Gear
	Medical Emergency Channel:	Command 7, 8, 9, 10, 11, 12 (Linked)
	ETA for Ambulance to Scene:	
	Air:	2 hr
	Ground:	3 hr
	Approved Heli-Spot:	
	Lat:	H25 47° 59.200' N
Long:	120° 16. 521' W	
TBD	EMS Responders & Capability:	TBD
	Equipment Available on Scene:	
	Medical Emergency Channel:	Command 7,8,9,10,11 (Linked)
	ETA for Ambulance to Scene:	
	Air:	
	Ground:	
	Approved Heli-Spot:	NA
	Lat:	NA
Long:	NA	
TBD	EMS Responders & Capability:	TBD
	Equipment Available on Scene:	
	Medical Emergency Channel:	Command 7,8,9,10,11 (Linked)
	ETA for Ambulance to Scene:	
	Air:	
	Ground:	
	Approved Heli-Spot:	NA
	Lat:	NA
Long:	NA	

Prepared By (Medical Unit Leader)	Date	Reviewed By (Safety Officer)	Date
Cass Monroe MEDLt	07/04/24	Matt Broyles SOFC	07/0424
Signature: <i>Cass Monroe</i>		Signature: <i>Matt Broyles</i>	

Medical Incident Report

FOR A NON-EMERGENCY INCIDENT, WORK THROUGH CHAIN OF COMMAND TO REPORT AND TRANSPORT INJURED PERSONNEL AS NECESSARY.

FOR A MEDICAL EMERGENCY: IDENTIFY ON SCENE INCIDENT COMMANDER BY NAME AND POSITION AND ANNOUNCE "MEDICAL EMERGENCY" TO INITIATE RESPONSE FROM IMT COMMUNICATIONS/DISPATCH.

Use the following items to communicate situation to communications/dispatch.

1. CONTACT COMMUNICATIONS / DISPATCH (Verify correct frequency prior to starting report)

Ex: "Communications, Div. Alpha. Stand-by for Emergency Traffic."

2. INCIDENT STATUS: Provide incident summary (including number of patients) and command structure.

Ex: "Communications, I have a Red priority patient, unconscious, struck by a falling tree. Requesting air ambulance to Forest Road 1 at (Lat./Long.) This will be the Trout Meadow Medical, IC is TFLD Jones. EMT Smith is providing medical care."

Severity of Emergency / Transport Priority	<input type="checkbox"/> RED / PRIORITY 1 Life or limb threatening injury or illness. Evacuation need is IMMEDIATE <i>Ex: Unconscious, difficulty breathing, bleeding severely, 2° – 3° burns more than 4 palm sizes, heat stroke, disoriented.</i> <input type="checkbox"/> YELLOW / PRIORITY 2 Serious Injury or illness. Evacuation may be DELAYED if necessary. <i>Ex: Significant trauma, unable to walk, 2° – 3° burns not more than 1-3 palm sizes.</i> <input type="checkbox"/> GREEN / PRIORITY 3 Minor Injury or illness. Non-EMERGENCY transport <i>Ex: Sprains, strains, minor heat-related illness.</i>	
Nature of Injury or Illness & Mechanism of Injury		<i>Brief Summary of Injury or Illness (Ex: Unconscious, Struck by Falling Tree)</i>
Transport Request		<i>Air Ambulance / Short Haul/Hoist Ground Ambulance / Other</i>
Patient Location		<i>Descriptive Location & Lat. / Long. (WGS84)</i>
Incident Name		<i>Geographic Name + "Medical" (Ex: Trout Meadow Medical)</i>
On-Scene Incident Commander		<i>Name of on-scene IC of Incident within an Incident (Ex: TFLD Jones)</i>
Patient Care		<i>Name of Care Provider (Ex: EMT Smith)</i>

3. INITIAL PATIENT ASSESSMENT: Complete this section for each patient as applicable (start with the most severe patient)

Patient Assessment: See IRPG page 106

Treatment:

4. TRANSPORT PLAN:

Evacuation Location (if different): (Descriptive Location (drop point, intersection, etc.) or Lat. / Long.) Patient's ETA to Evacuation Location:

Helispot / Extraction Site Size and Hazards:

5. ADDITIONAL RESOURCES / EQUIPMENT NEEDS:

Example: Paramedic/EMT, Crews, Immobilization Devices, AED, Oxygen, Trauma Bag, IV/Fluid(s), Splints, Rope rescue, Wheeled litter, HAZMAT, Extrication

6. COMMUNICATIONS: Identify State Air/Ground EMS Frequencies and Hospital Contacts as applicable

Function	Channel Name/Number	Receive (RX)	Tone/NAC *	Transmit (TX)	Tone/NAC *
COMMAND					
AIR-TO-GRND					
TACTICAL					

7. CONTINGENCY: Considerations: If primary options fail, what actions can be implemented in conjunction with primary evacuation method? Be thinking ahead.

8. ADDITIONAL INFORMATION: Updates/Changes, etc.

REMEMBER: Confirm ETA's of resources ordered. Act according to your level of training. Be Alert. Keep Calm. Think Clearly. Act Decisively.