



<b>INCIDENT OBJECTIVES</b>	1. Incident Name <b>PIONEER</b>	2. Date Prepared <b>07/05/2024</b>	3. Time <b>1900</b>
4. Operational Period <b>Day Operations: 0700-2100</b>			
<p><b>Strategic Framework:</b> The Pioneer Fire is a full suppression fire utilizing strategies and tactics that provide the highest likelihood of success while mitigating risks to the responders and public. Extreme terrain prevents direct attack. Indirect lines are being identified and established that reduces risk to responders while protecting identified values including private and federal infrastructure and recreational values.</p> <p><b>Management Objectives:</b></p> <ul style="list-style-type: none"> <li>• Ensure the safety and well-being of responders and the public by making timely risk-informed decisions that align with values at risk.</li> <li>• Protect private and federal infrastructure and recreational values.</li> <li>• Foster relationships with local cooperators and the public by providing coordinated, accurate, and timely information.</li> <li>• Coordinate suppression activities with READ's to identify and mitigate current and future impacts to the landscape and resources.</li> <li>• Treat each other with dignity and respect and act in a professional manner on the fire and in the communities.</li> <li>• Manage cost commensurate with values at risk by coordinating with the Agency Administrators and Incident Business Advisors.</li> </ul> <p><b>Operational Objectives:</b></p> <ul style="list-style-type: none"> <li>• Implement an effective suppression strategy utilizing direct attack where and when appropriate to protect values at risk. When fire behavior, terrain, or safety concerns prohibit direct attack, utilize other suppression tactics such as indirect and point protection as appropriate to reduce risk to responders. Take advantage of natural features such as breaks in fuels, topographic features, or changes in weather.</li> <li>• Establish indirect control lines with the highest probability of success which prevent fire spread into populated areas.</li> <li>• Communicate with local law enforcement officials to ensure current and potential evacuations are coordinated.</li> </ul>			
6. Weather Forecast for Period			
7. General Safety Message			
8. Attachments (mark if attached)			
X	Organization List - ICS 203	X	Medical 206WF - 8 Line
X	Div. Assignment Lists - ICS 204	X	Safety Message
X	Communications Plan - ICS 205		LCES - ICS 215A
X	Medical Plan - ICS 206	X	Weather Forecast
X	Air Operation Summary - ICS 220	X	Fire Behavior
		X	Finance Message
			Dutch Creek Protocol
			Phone List
		X	Incident Map(s)
		X	Unit Log
Prepared by Planning Section Chief <i>Mike Crawford</i>		Approved by Incident Commander <i>[Signature]</i>	



ORGANIZATION ASSIGNMENT LIST		IT Specialist	Mike Gascon / Chad Funnemark / Ben Smith (T)
1. Incident Name <b>PIONEER</b>		Receiving Distribution	Michael Hanson / David Richards (Stehekin) / Martin Eversaul (Lucerne)
2. Date Prepared <b>JULY 5, 2024</b>	3. Time Prepared <b>1800</b>	Ordering Manager	Noe Reyes / Kerry Johnston
4. Operational Period <b>JULY 6, 2024 0700 – 2100</b>		Ground Support Unit	Casey Glade / Joe Keady
5. Incident Commander and Staff		Communication Unit	Seth Baumgarten / Michael Merrick (T)
Position	Name	Communication Tech.	Keith Schaff / Kevin Judd
Incident Commander	Nate LeFevre	Food Unit	Kristy Naughton / John Cody/Maxine Kline / Steven Bales (T)
Incident Commander (T)	Steve North	Security Manager	Michael Fakier
Deputy Incident Commander	Chris Orr	Medical Unit	Mariann Turley / Cass Monroe (T) / Jed Getman / (Stehekin) / Londa Van Kirk
Safety Officer	Matt Broyles / Eric Brown	<b>9. Operations Section</b>	
Information Officer	Cheyne Rossbach	OPS Section Chief - Lead	Jon Larson / Jeff Bortner (T)
Liaison	Shawn Christianson / Greg Brody (Stehekin) / Mark Suba / Rhonda Marchand (T)	OPS Section Chief - Planning	Rob Poyner (T)
Human Resources	Margaret Dietrich	OPS Section Chief – Field	Seth Merritt
READ Liaison	Courtney Rowe	<b>a. Branch I</b>	
6. Agency Representatives		Branch Director	Scott Ebel/ Josh Verellen (T)
Agency	Name	Division	A
USFS Oka/Wen Agency Admin	Chris Furr	Group	Lakeside
USFS Oka/Wen Agency Admin (T)	Paul Willard	Division	Z
DNR Agency Administrator	Larry Leach	<b>b. Branch II</b>	
DNR Deputy Agency Administrator	Wyatt Leighton	Branch Director	Scott Ebel/ Josh Verellen (T)
NPS Agency Administrator	Don Striker	Division	D
NPS Agency Representative	Denise Shultz	<b>c. Branch IV</b>	
7. Planning Section		Branch Director	Roger Goldman
Plans Section Chief	Mike Crawford	Division	H
Deputy Plans Section Chief	Debbie Plummer (T)	<b>d. Branch V</b>	
Resource Unit	Gary Duranceau	Branch Director	Roger Goldman
Status Check-in	Katelyn Roeder/ Charlie Hardy	Division	S
Situation Unit	Shannon Theall / Ray Moeckel (T)	Division	Contingency / Roads
GIS Specialists	Aleksandar Dozic / Olivia Hughes (T)	Division	Staging
Demob Unit	Jay Lord	Division	Boat
Documentation Unit	Chris Oelschlager	<b>e. Air Operations Branch</b>	
Incident Meteorologist	Todd Carter / Maddie Kristell (T)	AOB Director – Planning	Mark Hocken
Fire Behavior Analyst	Steve Ziel / Michael Bowden	AOB Director – Field	Ted Hass
Strategic Operational Planner	Greg Funderburk	HELCO ATGS	Jamie Lienthal
Air Resources Advisor	Dan Byrd	<b>10. Finance Section</b>	
8. Logistics Section		Finance Section Chief	Andrea Andresen / Lori Bailey (T)
Logistics Section Chief	Franklin Vaughan / Larry Falcon (T)	Time Unit	Beverly Hollars
Deputy Logistics Section Chief	Max Yager (Stehekin) / Cindy Wedekind (Lucerne)	Procurement	Audrey Mainwaring
Facilities	Jan Robbins / Kelsey Lipp / Peter Drott (T) / Tammy Swickey	Comp/Claims	Kelly Lorenz (Virtual)
Base Camp Manager	Dave Lefevre	Cost Unit	Dede Domingos (Virtual)
Supply Unit	Vicki Cunningham	Prepared by Gary Duranceau, RESL	



## Fire Weather Forecast



**FORECAST NO:** 24  
**PREDICTION FOR:** 24 Hr Shift  
**SHIFT DATE:** Saturday 7/6/2024  
**TIME AND DATE ISSUED:** 7/5/2024 1900 hrs

**INCIDENT:** Pioneer Fire  
**SIGNED:** *Madelyn Kristell*  
 Incident Meteorologist Trainee (IMET)

### Discussion:

**\*\*\*Excessive Heat Warning has been issued by the NWS, Spokane effective Sat. through Friday\*\*\***

High pressure will continue to drive temperatures up into next week with very hot temperatures and critically low relative humidity values between ten and twenty percent. Overnight low temperatures will be in the mid to upper 60s, which will not offer adequate relief from the heat of the day. Today's temperatures will be only slightly cooler as a weak wave moves through the region, but the only sensible effects will be lessened wind speeds.

### WEATHER FORECAST FOR TODAY:

**SKY/WEATHER:** Sunny. Smoke in the morning and in valleys, mixing out in the afternoon.

**MAX TEMPERATURE:** 90 to 95 valleys/mid-slopes. 70 to 76 around 5000 feet.

**MIN RH:** 15 to 20 percent valleys/mid-slopes. 23 to 30 percent ridges.

#### **20 FT WINDS:**

**Lower Valleys:** Southeast 5 to 10 mph becoming northwest late in the afternoon at 6 to 10 mph. Down lake 10 mph gusts to 18 mph after 1600.

**Mid-slopes and Ridges:** Southeast to 10 mph turning Northwest around 10 mph late afternoon and evening.

**HAINES INDEX:** 4 Moderate.

**TRANSPORT WINDS:** Southeast turning west at 10 mph.

**INVERSION:** Moderate inversion lifting by 1100. Mixing Height 9000 ft by 1500.

### TONIGHT:

**SKY/WEATHER:** Mostly Clear. Smoke settling in valleys near Chelan.

**MIN TEMPERATURE:** 65 to 70 valleys/mid-slopes. 52 to 55 around 5000 feet.

**MAX RH: Poor Recovery.** 35 to 40 percent valleys/mid-slopes. 35 to 45 percent ridges around 5000 feet.

#### **20 FT WINDS:**

**Valleys/Lower Slopes:** Northwest down lake 5 to 10 mph in the evening decreasing after 2200.

**Mid-Slopes and Ridges:** Northwest 8 to 10 mph in the evening.

**INVERSION:** Developing after 2100 hrs to near 1000 ft.

### SUNDAY:

**SKY/WEATHER:** Sunny.

**MAX TEMPERATURE:** 88 to 94 valleys/mid-slopes. 63 to 70 around 5000 feet.

**MIN RH:** 17 to 23 percent valleys/mid-slopes. 20 to 30 percent ridges.

#### **20 FT WINDS:**

**Lower Valleys:** Southeast 5 to 10 mph becoming northwest late in the afternoon at 6 to 10 mph. Down lake 10 mph gusts to 18 mph after 1600.

**Mid-slopes and Ridges:** Southeast to 10 mph turning Northwest around 10 mph late afternoon and evening.

**HAINES INDEX:** 5 High.

**TRANSPORT WINDS:** SE turning W 10 mph.

**Boating concerns Saturday:** Lighter downlake flow should reduce whitecaps and wind waves below 2ft.  
**Aviation concerns Saturday:** Temperature near 22C at 4000 feet for load calcs. Increased winds could create additional turbulence especially on lee side slopes. Thermal turbulence likely due to uneven heating of terrain and slopes.

Weather observations can be texted to 509-319-0474 or emailed to [todd.carter@noaa.gov](mailto:todd.carter@noaa.gov)



## Fire Behavior Forecast # 25

<b>Name of Incident:</b> Pioneer	<b>Administrative Unit:</b> SE Region DNR / Okanogan-Wenatchee NF
<b>Date &amp; Time Issued:</b> July 5, 2024 @ 1900	<b>Operational Period:</b> DAY 07/06/2024
<b>FBAN:</b> Steve Ziel	<b>Signed:</b> /z/

**Assumptions:** *Very HOT and DRY conditions will provide all the ingredients for very active fire behavior today. Current fuel conditions will support rapid fire spread with wind and slope alignment. Expect very active burning conditions between 1200-2000. Fire spread rate is being dominated by fine dead fuels and cured grasses. Live fuels are not contributing to fire spread at this time. Lake effect winds (up or down lake) dominate lower and mid slopes; the fire is on a dry S/SW aspect with steep side drainages that provide strong upslope winds. Wind/slope alignment and/or lake wind will influence fire spread rate and direction. Expect down lake winds, with gusts to 18 mph by 1600, and 10 mph from NW on ridgetops by late aftn.. Up lake then down lake alignment*

### Weather Summary

\*See attached Fire Weather Forecast

### Fire Behavior Summary

**Fuels in the fire area** are composed of a mosaic of *Timber Litter, Grass, Timber with Understory, and Grass/Shrub* models. The fire is burning in the Rex Creek (2001) fire footprint. Primary tree species include mixed sizes and densities of Douglas Fir and Ponderosa Pine. Local timber litter is compact to fluffy. Brush and understory species include ceanothus, hardwoods, and dog-hair conifer reproduction. Large snags and heavy downed fuel loadings are common throughout all areas. Live woody and herbaceous fuels are seasonally moist, and not contributing to rates of spread; grasses are partially to fully cured depending on elevation and aspect. Fuel conditions change by aspect, previous fire history, and elevation. Most N and E aspects include 23-year old brush and conifer trees.

*Today's potential fire behavior includes pockets/areas of active flanking, backing (with rollout), and fingering head fire runs with wind/slope alignment. Primary spread mechanism is backing with rollout, and flanking in fine dead fuels. Heavy fuels are retaining heat serving as ignition sources in dry fine fuels. Early season fuel condition is inhibiting full fire behavior potential – live fuels are moist; some grasses are still curing. Expect daily increases in fire behavior developing (hot/dry) for next several days. Expect some interior flare-ups with drying. Potential rapid slope reversal spread where it occurs. Lee-side spotting likely with runs.*

\* **FFM= 2%-3%, 1000hr. moisture=11%, Woody fuels 160%, Probability of Ignition-80 -90%, Max Spotting < 0.5**

Fuel Type	Rate of Spread	Flame Length	Backing ROS	Spot Size in 2-hours
...If your work area includes -	(CH/HR = FPM)	Feet	FPM	200 acres
GR2 - Moderate load grass/shrub	40 - 45	4 - 5	1-2	
SH2 – Moderate load shrub	3 - 4	2	< 1	
TU5 - High load Timber w/ Understory	12 - 14	8- 9 (torching)	1	20 acres
TL8 – Long needle timber litter	14 - 15	4- 6	1 +	30 acres

### Specific Assignments:

**Div. A** – Backing, and flanking in upper Meadow Cr. Likely upslope short finger runs in draws and chutes. Monitor backing rate.

**Div. Z** – Watch for flare ups in unburned parcels in freshly fired areas. Monitor backing fire toward Prince Cr. and alluvial area.

**Lakeshore Group** – Monitor up/down lake winds closely. Expect rapid spread in fine fuels when fire becomes active.

**Other Br./Grp.** – Should not be affected by fire activity during the burn period. Monitor smoke direction and amount. Assess fuels.

\***IA** – Ensure good size-up before engaging. Assess fire spread potential based on fuel, weather, topography and values at risk.

**Air Operations:** Hot. Locally heavy smoke in drainages and aloft. Complex terrain watch for lee-side turbulence.

### Safety

Our fire will be getting larger for the next couple burn periods, larger fires release more energy; more energy released makes larger fires – this fire will get larger. Large fires get large slowly or quickly (take home message – observe fire behavior to determine your actions).

Critically low Relative Humidity may trigger for rapidly escalating fire behavior today. *Think of Probability of Ignition as if you dropped 100 matches.....80% means 80 of the matches would ignite the surface fuels....how many "matches" fall out of a torching of tree??.*

\*Today's Fire Behavior Forecast contains 688 words written for your situational awareness.

DIVISION ASSIGNMENT LIST		1. Branch <b>I</b>		2. Division / Group <b>A</b>			
3. Incident Name <b>Pioneer</b>		4. Operational Period Date: <b>07/06/2024</b> Time: <b>0700-2100</b>					
5. Operations Personnel							
Operations Chief	Jon Larson / Jeff Bortner(T)		Division / Group Supervisor	Seth Missal / James Fields (T)			
Operations Chief (Plans)			Branch Director	Scott Ebel / Josh Verellen (T)			
Safety Officer	Matt Broyles / Eric Brown		Air Attack Supervisor	Jamie Lilienthal			
6. Resources Assigned this Period							
	Strike Team / Task Force / Resource Designator	Leader	Number Persons	Tentative Last Work Day	Drop Off Pt / Time	Pick Up Pt / Time	
1.	O-180 TFLD	Joe Landburg	1	7/10	DP-22 / Moore Point	DP-22 / Moore Point	
2.	O-266 TFLD (T)	Frank Bojorquez	1	7/12	DP-22 / Moore Point	DP-22 / Moore Point	
3.							
4.	C-30 CRW1 Entiat IHC	John Wirth	23	7/19	DP-22 / Moore Point	DP-22 / Moore Point	
5.	C-28 CR2I Entiat <b>CRD</b>	Tyler Herdman	22	7/15	DP-22 / Moore Point	DP-22 / Moore Point	
6.							
7.	O-359 MEDIC 12	Ethan Biederman	1	7/16	DP-22 / Moore Point	DP-22 / Moore Point	
8.	O-310 EMT 5	Dave Repnik	1	7/14	DP-22 / Moore Point	DP-22 / Moore Point	
9.							
10.	O-175 SOFR	Melissa Moore	1	7/11	DP-22 / Moore Point	DP-22 / Moore Point	
11.	O-352 SOFC	Kris Croddy	1	7/16	Lucerne	Lucerne	
12.							
13.							
14.							
15.							
16.							
17.							
18.							
19.							
20.							
21.							
7. Control Operations							
<b>Task:</b> Contain fire spread to the northwest where terrain and fuels allow for highest probability of success. Assess fire perimeter progression to the north and west at higher elevations. Implement point protection efforts on federal & private infrastructure.							
<b>Purpose:</b> To slow fire progression, provide time for suppression tactics, and continue to prep around critical values.							
<b>End state:</b> Minimize fire impacts to critical values including private inholdings and Forest Service infrastructure.							
8. Special Instructions							
<ul style="list-style-type: none"> <li>In large or long term spike camps use helicopters, boats, or pack stock to deliver portable backcountry latrines and remove human waste if necessary. If camp does not have adequate pack, boat, or air support for human waste management, establish community latrines well away from water sources and common areas. Use human waste bags, if necessary.</li> <li>Minimize ground disturbance on the Moore Point and Meadow Creek alluvial fans in order to protect sensitive resources.</li> <li>Hose used from Prince Creek to Moore Pt: contaminated with invasive plants. Do not reuse. Backhaul to Moore Pt DP22 and store in "infested hose" area at Moore Pt until decontaminated.</li> <li>** Denotes available for Initial Attack</li> </ul>							
9. Division / Group Communication Summary							
Function	Frequency	System	Channel	Function	Frequency	System	Channel
Command Repeater	See Comm Plan			Command	See Comm. Plan		
TAC				Air To Ground	See Comm. Plan		
Prepared by (Resource Unit Leader): Gary Duranceau			Approved by (Planning Section Chief): Mike Crawford			Date 7/5/24	Time 1900



<b>DIVISION ASSIGNMENT LIST</b>			1. Branch <b>I</b>		2. Division / Group <b>Lakeside SHORE PROTECTION</b>		
3. Incident Name <b>Pioneer</b>			4. Operational Period Date: <b>07/06/2024</b> Time: <b>0700-2100</b>				
5. Operations Personnel							
Operations Chief		Jon Larson / Jeff Bortner (T)		Division / Group Supervisor		Travis Baker / Frank Heilman (T)	
Operations Chief (Plans)				Branch Director		Scott Ebel / Josh Verellen (T)	
Safety Officer		Matt Broyles / Eric Brown		Air Attack Supervisor		Jamie Lilienthal	
6. Resources Assigned this Period							
	Strike Team / Task Force / Resource Designator	Leader	Number Persons	Tentative Last Work Day	Drop Off Pt / Time	Pick Up Pt / Time	
1.	O-182 WFM1 Selway	Brian Peterson	13	7/8	DP-30	DP-30	
2.							
3.	C-29 CRW1 Baker River IHC	Gary Chicks	224	7/11	DP-30 36	DP-30 36	
4.	**C-19 CR21 Cle Elum RD	Cris Machado	186	7/8	SAFE HARBOR	SAFE HARBOR	
5.							
6.	A-78 UR-31	Marshal Wallace	4	7/9	Lucerne	Lucerne	
7.							
8.	O-307 MEDIC 8	Rick Kelly	1	7/11	SAFE DP-30 HARBOR	SAFE DP-30 HARBOR	
9.	O-309 MEDIC 9	Benjamin McCall	1	7/18	DP-30	DP-30	
10.							
11.	O-174.52 SOFR	George Libercajt	1	7/7	DP-27 / Lucerne	DP-27 / Lucerne	
12.							
13.							
14.							
15.							
16.							
17.							
18.							
19.							
20.							
21.							
22.	TBD:						
23.	(2) Fire Boat						
7. Control Operations <b>Task:</b> Protect Forest Service infrastructure and private property from Pioneer Creek to Mitchell Creek <b>Purpose:</b> To slow fire progression, provide time for suppression tactics, and continue to prep around critical values. <b>End state:</b> Minimize fire impacts to critical values including private inholdings and Forest Service infrastructure							
8. Special Instructions							
<ul style="list-style-type: none"> <li>In large or long term spike camps use helicopters, boats, or pack stock to deliver portable backcountry latrines and remove human waste if necessary. If camp does not have adequate pack, boat, or air support for human waste management, establish community latrines well away from water sources and common areas. Use human waste bags, if necessary.</li> <li>Ensure hazard mitigations and IWI protocols are in place before taking action.</li> <li>Hose used from Prince Creek to Moore Pt: contaminated with invasive plants. Do not reuse. Backhaul to Moore Pt DP22 and store in "infested hose" area at Moore Pt until decontaminated.</li> </ul>							
9. Division / Group Communication Summary							
Function	Frequency	System	Channel	Function	Frequency	System	Channel
Command Repeater	See Comm Plan			Command	See Comm. Plan		
TAC				Air To Ground	See Comm. Plan		
Prepared by (Resource Unit Leader): Gary Duranceau			Approved by (Planning Section Chief): Mike Crawford			Date: 7/5/24	Time: 1900

<b>DIVISION ASSIGNMENT LIST</b>			1. Branch <b>II</b>	2. Division / Group <b>D</b>	<b>Page 1 of 2</b>		
3. Incident Name <b>Pioneer</b>			4. Operational Period Date: <b>07/06/2024</b> Time: <b>0700-2100</b>				
5. Operations Personnel							
Operations Chief	Jon Larson / Jeff Bortner (T)		Division / Group Supervisor	Andrew Schaffran			
Operations Chief (Plans)			Branch Director	Scott Ebel / Josh Verellen (T)			
Safety Officer	Matt Broyles / Eric Brown		Air Attack Supervisor	Jamie Lilienthal			
6. Resources Assigned this Period							
	Strike Team / Task Force / Resource Designator	Leader	Number Persons	Tentative Last Work Day	Drop Off Pt / Time	Pick Up Pt / Time	
1.	O-183 TFLD	Harley Hamman	1	7/6	Stehekin	Stehekin	
2.	O-276 HECM	Reynaldo Juban	1	7/12	Stehekin	Stehekin	
3.	O-277 HECM	Jason Evans	1	7/12	Stehekin	Stehekin	
4.							
5.	O-278 SMOD Crew 84	Geoff Hibbs	5	7/9	Stehekin	Stehekin	
6.	O-187 WFM1 Grass Lake	William Johnson	9	7/7	Stehekin	Stehekin	
7.	**O-218 WFM2 Olympic	Jonah Gray	10	7/6	Stehekin	Stehekin	
8.							
9.	O-167 ARCH	Jason Wright	1	7/12	Stehekin	Stehekin	
10.	O-168 ARCH	Ernest Wingate	1	7/6	Stehekin	Stehekin	
11.	O-370 ARCH (T)	Henry Eaton	1	7/18	Stehekin	Stehekin	
12.	O-372 READ	Jack Oelfke	1	7/19	Stehekin	Stehekin	
13.	O-166 REAF	Jordan Spaak	1	7/6	Stehekin	Stehekin	
14.	O-237 REAF	Cade Simpson	1	7/7	Stehekin	Stehekin	
15.	O-376 REAF	Roger Christophersen	1	7/18	Stehekin	Stehekin	
16.							
17.							
18.							
19.							
20.							
21.							
7. Control Operations <b>Task:</b> Continue construction of contingency lines around the community of Stehekin. <b>Purpose:</b> Minimize fire impacts to critical values including private inholdings, the community of Stehekin, and Forest Service infrastructure. <b>End state:</b> Critical values including private inholdings, the community of Stehekin, and Forest Service infrastructure are not impacted by the Pioneer fire, while minimizing fire impacts and acres burned utilizing historic wildfire control features and natural barriers.							
8. Special Instructions							
<ul style="list-style-type: none"> <li>All operational personnel working on USFS lands will need to conduct a thorough inspection for invasive species seeds on boots including laces, clothing, and gear prior to entering NPS lands.</li> <li>Only fresh (direct from the cache) hose should be utilized on NPS lands to prevent the transport of invasive species seeds.</li> <li>Hose used on USFS lands should not be used on NPS lands and hose used on NPS lands should not be used on USFS lands to prevent the spread of invasives species seeds.</li> <li>Cargo loads being transported onto NPS lands should be inspected for invasive weed seed prior to flight.</li> <li>Ensure hazard mitigations and IWI protocols are in place before taking action.</li> <li>NPS Resource Avoidance Area Flagging is yellow with red polka dots. Contact NPS READs before working in areas where this flagging is present.</li> <li>** Denotes available for Initial Attack</li> </ul>							
9. Division / Group Communication Summary							
Function	Frequency	System	Channel	Function	Frequency	System	Channel
Command Repeater	See Comm Plan			Command	See Comm. Plan		
TAC				Air To Ground	See Comm. Plan		
Prepared by (Resource Unit Leader): Gary Duranceau			Approved by (Planning Section Chief): Mike Crawford		Date: 7/5/24	Time: 1900	



<b>DIVISION ASSIGNMENT LIST</b>			1. Branch <b>II</b>		2. Division / Group <b>D</b>		<b>Page 2 of 2</b>		
3. Incident Name <b>Pioneer</b>			4. Operational Period Date: <b>07/06/2024</b> Time: <b>0700-2100</b>						
5. Operations Personnel									
Operations Chief		Jon Larson / Jeff Bortner (T)		Division / Group Supervisor		Andrew Schaffran			
Operations Chief (Plans)				Branch Director		Scott Ebel / Josh Verellen (T)			
Safety Officer		Matt Broyles / Eric Brown		Air Attack Supervisor		Jamie Lillenthal			
6. Resources Assigned this Period									
	Strike Team / Task Force / Resource Designator		Leader		Number Persons	Tentative Last Work Day	Drop Off Pt / Time		Pick Up Pt / Time
22.	O-165 REMS 2		Brayden Kirk		4	7/10	Stehekin		Stehekin
23.									
24.	O-174.88 SOFR		Leo Engleson		1	7/7	Stehekin		Stehekin
25.	O-353 SOFC		Phillip Bordelon		1	7/17	Stehekin		Stehekin
26.									
27.	E-89 Driver		Phillip Bossen		1	7/14	Stehekin		Stehekin
28.									
29.									
30.									
31.									
32.									
33.									
34.									
35.									
36.									
37.									
38.									
39.									
40.									
41.	TBD:								
42.	(1) SMOD								
7. Control Operations									
<b>Task:</b> Continue construction of contingency lines around the community of Stehekin.									
<b>Purpose:</b> Minimize fire impacts to critical values including private inholdings, the community of Stehekin, and Forest Service infrastructure.									
<b>End state:</b> Critical values including private inholdings, the community of Stehekin, and Forest Service infrastructure are not impacted by the Pioneer fire, while minimizing fire impacts and acres burned utilizing historic wildfire control features and natural barriers.									
8. Special Instructions									
<ul style="list-style-type: none"> <li>All operational personnel working on USFS lands will need to conduct a thorough inspection for invasive species seeds on boots including laces, clothing, and gear prior to entering NPS lands.</li> <li>Only fresh (direct from the cache) hose should be utilized on NPS lands to prevent the transport of invasive species seeds.</li> <li>Hose used on USFS lands should not be used on NPS lands and hose used on NPS lands should not be used on USFS lands to prevent the spread of invasives species seeds.</li> <li>Cargo loads being transported onto NPS lands should be inspected for invasive weed seed prior to flight.</li> <li>Ensure hazard mitigations and IWI protocols are in place before taking action.</li> <li>NPS Resource Avoidance Area Flagging is yellow with red polka dots. Contact NPS READs before working in areas where this flagging is present.</li> <li>** Denotes available for Initial Attack</li> </ul>									
9. Division / Group Communication Summary									
Function	Frequency	System	Channel	Function	Frequency	System	Channel		
Command Repeater	See Comm Plan			Command	See Comm. Plan				
TAC				Air To Ground	See Comm. Plan				
Prepared by (Resource Unit Leader): Gary Duranceau			Approved by (Planning Section Chief) Mike Crawford			Date 7/5/24	Time 1900		

ALL RESOURCES TO COME/ROADS

MEDIC ISSUES OUT FOR TODAY

<b>DIVISION ASSIGNMENT LIST</b>			1. Branch <b>IV</b>		2. Division / Group <b>H</b>		
3. Incident Name <b>Pioneer</b>			4. Operational Period Date: <b>07/06/2024</b> Time: <b>0700-2100</b>				
5. Operations Personnel							
Operations Chief		Jon Larson / Jeff Bortner (T)		Division / Group Supervisor		Matt Ziegler / Steve Abrams (T)	
Operations Chief (Plans)				Branch Director		Roger Goldman	
Safety Officer		Matt Broyles / Eric Brown		Air Attack Supervisor		Jamie Lilienthal	
6. Resources Assigned this Period							
	Strike Team / Task Force / Resource Designator	Leader	Number Persons	Tentative Last Work Day	Drop Off Pt / Time	Pick Up Pt / Time	
1.	O-355 TFLD	Jason Conway	1	7/9	ICP	ICP	
2.	O-333 HEQB	Jed Neumeier	1	7/16	ICP	ICP	
3.	O-127 FMOD Rainstorm	Kendall Cain	2	7/8	ICP	ICP	
4.	O-128 FMOD Rainstorm	Mike Lind	2	7/8	ICP	ICP	
5.	O-344 FELB	Jacob Harvey	1	7/15	ICP	ICP	
6.							
7.	**E-191 ENG3 Rattlesnake Ridge	Brandon Marsh	3	7/15	ICP	ICP	
8.							
9.	E-76 WTS2 Mountain View Wildfire	Robert Martin	1	7/17	ICP	ICP	
10.	E-83 WTS2 King Hydroseeding	Joe Ivie	1	7/11	ICP	ICP	
11.	E-172 WTS2 Upper Valley	Joseph Schoenmakers	1	7/12	ICP	ICP	
12.	E-173 WTS2 Ridgetop Iron	Tim Whitehurst	1	7/12	ICP	ICP	
13.							
14.	E-102 SKG2 Dukes Equipment	Justin Durston	2	7/15	ICP	ICP	
15.	E-103 MBM2 Marcon Timber	Mark Foresman	2	7/20	ICP	ICP	
16.	E-104 MBM2 Havillah Logging	Tom Kershner	2	7/20	ICP	ICP	
17.	E-105 MBM2 Justin Pitts	Adam Bergstrom	2	7/15	ICP	ICP	
18.							
19.	O-383 MEDIC 13	Anthony Bylski	1	7/18	ICP	ICP	
20.	E-194 AMBO-2	Anna Reynolds	2	7/15	ICP	ICP	
21.							
22.	O-267 SOFR	Tom Talbot	1	7/10	ICP	ICP	
23.							
24.							
7. Control Operations <b>Task:</b> Continue road work on both sides of the Gold Creek Rd from DP-100 to DP-72 by removing brush and debris no more than 6ft from the edge of roadway and that which causes obstructions to visibility around corners. <b>Purpose:</b> To provide better access and facilitate safe firefighter traffic on the Gold Creek corridor. <b>End state:</b> Improve roadways to provide safer and more efficient travel.							
8. Special Instructions							
<ul style="list-style-type: none"> <li>• Work with READs to maintain resource protection</li> <li>• Ensure hazard mitigations and IWI protocols are in place before taking action.</li> <li>• Do not draft from Gold Creek above DP-102 or from Black Canyon Creek.</li> <li>• ** Denotes available for Initial Attack</li> </ul>							
9. Division / Group Communication Summary							
Function	Frequency	System	Channel	Function	Frequency	System	Channel
Command Repeater	See Comm Plan			Command	See Comm. Plan		
TAC				Air To Ground	See Comm. Plan		
Prepared by (Resource Unit Leader): Gary Duranceau			Approved by (Planning Section Chief): Miké Crawford			Date 7/5/24	Time 1900



<b>DIVISION ASSIGNMENT LIST</b>				1. Branch <b>V</b>		2. Division / Group <b>S</b>	
3. Incident Name <b>Pioneer</b>				4. Operational Period Date: <b>07/06/2024</b> Time: <b>0700-2100</b>			
5. Operations Personnel							
Operations Chief		Jon Larson / Jeff Bortner (T)		Division / Group Supervisor		Linda Gibson	
Operations Chief (Plans)				Branch Director		Roger Goldman	
Safety Officer		Matt Broyles / Eric Brown		Air Attack Supervisor		Jamie Lilienthal	
6. Resources Assigned this Period							
	Strike Team / Task Force / Resource Designator	Leader	Number Persons	Tentative Last Work Day	Drop Off Pt / Time	Pick Up Pt / Time	
1.	O-179 TFLD	Charlie Humbert	1	7/9	Camp 4 Spike	Camp 4 Spike	
2.	**O-249 TFLD (T)	Mark Harper	1	7/9	ICP	ICP	
3.							
4.	C-31 CRW1 La Grande IHC	Will Page	22	7/19	<del>ICP SPIKE</del>	<del>ICP SPIKE</del>	
5.	**C-18 CR2I Colville	Jacob Morse	21	7/6	Camp 4 Spike	Camp 4 Spike	
6.	C-23 CR2I SRV1	Jaime Medrano	23	7/11	ICP	ICP	
7.							
8.	**E-193 ENG5 WA-SES 4501	Connor Rupert	4	7/15	<del>ICP SPIKE</del>	<del>ICP SPIKE</del>	
9.							
10.	E-73 WTS1 Strand Tenders	Wade Strand	1	7/11	Camp 4 Spike	Camp 4 Spike	
11.	E-78 WTS2 King Hydroseeding	Don Warden	1	7/10	Camp 4 Spike	Camp 4 Spike	
12.							
13.	O-43 REMS1	Ray Storm	5	7/9	Camp 4 Spike	Camp 4 Spike	
14.	O-358 MEDIC 11	Savanah McLaughlin	1	7/16	<del>ICP SPIKE</del>	<del>ICP SPIKE</del>	
15.	O-345 SOF2	Todd Mott	1	7/14	Camp 4 Spike	Camp 4 Spike	
16.	<del>O-76 MEDIC 5</del>	<del>BRIAN LINACRE</del>	<del>1</del>	<del>7/7</del>	<del>ICP</del>	<del>ICP</del>	
17.	E-18, E-93, E-94, E-148, E-149 UTV						
18.							
19.	TBD:						
20.	(2) IHC						
21.	(3) CR2I						
22.	(2) DOZ5						
23.	(2) SKG2						
24.	(5) ENG6						
25.	(1) TFLD						
7. Control Operations <b>Task:</b> Identify and make necessary improvements to the control line and minimize impacts to the 8200 Road with road watering operations. <b>Purpose:</b> To establish a barrier to fire to the east of Safety Harbor Creek. <b>End state:</b> Control line anchored from South Navaree CG to Lake Chelan.							
8. Special Instructions							
<ul style="list-style-type: none"> <li>• Ensure hazard mitigations and IWI protocols are in place before taking action.</li> <li>• ** Denotes available for Initial Attack</li> </ul>							
9. Division / Group Communication Summary							
Function	Frequency	System	Channel	Function	Frequency	System	Channel
Command Repeater	See Comm Plan			Command	See Comm. Plan		
TAC				Air To Ground	See Comm. Plan		
Prepared by (Resource Unit Leader): Gary Duranceau				Approved by (Planning Section Chief): Mike Crawford		Date 7/5/24	Time 1900

DIVISION ASSIGNMENT LIST		1. Branch <b>V</b>		2. Division / Group <b>Contingency/Roads</b>			
3. Incident Name <b>Pioneer</b>		4. Operational Period Date: <b>07/06/2024</b>				Time: <b>0700-2100</b>	
5. Operations Personnel							
Operations Chief		Jon Larson / Jeff Bortner (T)		Division / Group Supervisor		Jennifer Harris / Eric Metzger (T)	
Operations Chief (Plans)				Branch Director		Roger Goldman	
Safety Officer		Matt Broyles / Eric Brown		Air Attack Supervisor		Jamie Lilienthal	
6. Resources Assigned this Period							
	Strike Team / Task Force / Resource Designator	Leader	Number Persons	Tentative Last Work Day	Drop Off Pt / Time	Pick Up Pt / Time	
1.	**O-239 TFLD	Kory Garrie	1	7/9	ICP	ICP	
2.	O-241 TFLD	Jason Green	1	7/9	ICP	ICP	
3.	<del>O-245 TFLD</del>	<del>Noah Daniels</del>	1	7/10	ICP	ICP	
4.	**O-257 TFLD (T)	Craig McDonald	1	7/9	ICP	ICP	
5.							
6.	O-242 HEQB	Travis Parker	1	7/6	ICP	ICP	
7.	O-243 HEQB	Everardo Santillan	1	7/9	ICP	ICP	
8.	O-330 HEQB	Asa Ray	1	7/6	ICP	ICP	
9.	O-337 HEQB (T)	Brandon Humpherys	1	7/6	ICP	ICP	
10.							
11.	**E-192 ENG5 WA-SES E4406	Seth Reynolds	4	7/15	ICP	ICP	
12.							
13.	E-151 MBM2 Dukes	Chris Boles	2	7/22	ICP	ICP	
14.	E-152 MBM2 Axsus	Easton Anderson	2	7/18	ICP	ICP	
15.	E-154 SKG2 Western	Rick Lauman	2	7/8	ICP	ICP	
16.	E-155 SKG2 Mountain View	Shawn Beaman	2	7/8	ICP	ICP	
17.	<del>E-92 DZR3 BATCHelor EXC</del>	<del>JAY BATCHelor</del>	2	7/14			
18.	O-271 MEDIC 7	Steve Drab	1	7/7	ICP	ICP	
19.	O-346 SOFR	David Zuares	1	7/14	ICP	ICP	
20.							
21.	E-19, E-44 UTV				ICP	ICP	
22.							
23.							
7. Control Operations							
<b>Task:</b> Implement control lines from H41 to DP76. Continue road maintenance on 4330 and 4010. Scout additional control lines.							
<b>Purpose:</b> To protect critical values at risk.							
<b>End state:</b> To have established control lines in place that correspond to Pioneer Fire strategic plan.							
8. Special Instructions							
<ul style="list-style-type: none"> <li>Ensure hazard mitigations and IWI protocols are in place before taking action.</li> <li>Contingency resources working DIV H: Do not draft from Gold Creek above DP-102 or from Black Canyon Creek.</li> <li>Work with READS to maintain resource protection.</li> <li>** Denotes available for Initial Attack.</li> </ul>							
9. Division / Group Communication Summary							
Function	Frequency	System	Channel	Function	Frequency	System	Channel
Command Repeater	See Comm Plan			Command	See Comm. Plan		
TAC				Air To Ground	See Comm. Plan		
Prepared by (Resource Unit Leader): Gary Duranceau				Approved by (Planning Section Chief): Mike Crawford		Date 7/5/24	Time 1900



<b>DIVISION ASSIGNMENT LIST</b>		1. Branch <b>V</b>	2. Division / Group <b>Staging</b>				
3. Incident Name <b>Pioneer</b>		4. Operational Period Date: <b>07/06/2024</b> Time: <b>0700-2100</b>					
5. Operations Personnel							
Operations Chief	Jon Larson / Jeff Bortner (T)		Division / Group Supervisor	<b>NOAH DANIELS</b>			
Operations Chief (Plans)			Branch Director	Roger Goldman			
Safety Officer	Matt Broyles / Eric Brown		Air Attack Supervisor	Jamie Lilienthal			
6. Resources Assigned this Period							
	Strike Team / Task Force / Resource Designator	Leader	Number Persons	Tentative Last Work Day	Drop Off Pt / Time	Pick Up Pt / Time	
1.	E-69 FTRA Morris Forestry	Rudy Morris	1	7/12	ICP	ICP	
2.	E-92 DZR3 Batchelor Excavation	Jay Batchelder	2	7/14	ICP	ICP	
3.	E-157 WTS2 Pine Mountain Exc.	Bob Goss	1	7/8	ICP	ICP	
4.	E-174 WTS2 Upper Valley	Jim Smith	1	7/12	ICP	ICP	
5.	E-178 WTS2 Northern Construction	Richard Miller	1	7/12	ICP	ICP	
6.	E-179 WTS2 King Hydroseeding	Wes Bodenhamer	1	7/7	ICP	ICP	
7.							
8.							
9.							
10.							
11.							
12.							
13.							
14.							
15.							
16.							
17.							
18.							
19.							
20.							
21.							
22.							
23.							
24.							
25.							
7. Control Operations <b>Task:</b> Remain ready and available for divisions as needed. <b>Purpose:</b> To assist divisions as needed to complete missions as appropriate. <b>End state:</b> Support suppression efforts as needed to project communities.							
8. Special Instructions							
9. Division / Group Communication Summary							
Function	Frequency	System	Channel	Function	Frequency	System	Channel
Command Repeater	See Comm Plan			Command	See Comm. Plan		
TAC				Air To Ground	See Comm. Plan		
Prepared by (Resource Unit Leader): Gary Duranceau			Approved by (Planning Section Chief): Mike Crawford		Date: 7/5/24	Time: 1900	

TO CONT

DIVISION ASSIGNMENT LIST			1. Branch		2. Division / Group	
3. Incident Name <b>Pioneer</b>			4. Operational Period Date: <b>07/06/2024</b> Time: <b>0700-2100</b>			
5. Operations Personnel						
Operations Chief	Jon Larson / Jeff Bortner (T)		Division / Group Supervisor		Nate Crawford / Seth Ellis (T)	
Operations Chief (Plans)			Branch Director			
Safety Officer	Matt Broyles / Eric Brown		Air Attack Supervisor		Jamie Lilienthal	
6. Resources Assigned this Period						
	Strike Team / Task Force / Resource Designator	Leader	Number Persons	Tentative Last Work Day	Drop Off Pt / Time	Pick Up Pt / Time
1.	O-342 TFLD	Mike Hill	1	7/10	Lucerne	Lucerne
2.	O-248 TFLD (T)	Jason Ward	1	7/9	Lucerne	Lucerne
3.	O-263 TFLD (T)	Aaron Pedersen	1	7/12	ICP	ICP
4.	O-369 TFLD (T)	Katy Giddings	1	7/15	ICP	ICP
5.						
6.	O-331 HEQB	Brandon Reed	1	7/16	Lucerne	Lucerne
7.	O-332 HEQB	Eric Weinke	1	7/15	Lucerne	Lucerne
8.	O-354 HEQB	Logan Pike	1	7/16	Lucerne	Lucerne
9.	O-361 HEQB (T)	Thomas Dowdy	1	7/16	Lucerne	Lucerne
10.	O-368 HEQB (T)	Cole Bingham	1	7/16	Lucerne	Lucerne
11.						
12.	E-1 TBOT WA-NCP NPS	Sonja Shaw	1	*CWN	Stehekin	Stehekin
13.	E-3 TBOT Chelan Co. F&R#7	Brandon Asher	2	*O/S	Lucerne	Lucerne
14.	E-12 TBOT WA-OWF Chelan RD	Dick Gordon	1	*M-Sa	FS Dock	FS Dock
15.	E-43 TBOT Llama Boat	Gayle Thomas	1	*O/S	FS Dock	FS Dock
16.	E-91 TBOT DNR Mud Puppy	Ben Kilfoil	1	7/13	Lucerne	Lucerne
17.	E-120 TBOT Pilgram	Justin Gavin	1	7/11	FS Dock	FS Dock
18.	E-121 TBOT Brinnon Fire	Christopher Dolan	2	7/12	Lucerne	Lucerne
19.	E-98 TBOT Chelan County Sheriffs	Rich Magnussen	2	*O/S	FS Dock	FS Dock
20.						
21.	O-357 MEDIC 10	Sean Hendron	1	7/15	Lucerne	Lucerne
22.	O-308 EMT 4	Justin Dominguez	1	7/12	Lucerne	Lucerne
23.						
24.	TBD:					
25.	(3) TBOT					
7. Control Operations						
<b>Task:</b> Provide logistical needs for all fire activities on navigable waters.						
<b>Purpose:</b> Adequately support the needs of incident personnel in areas not accessible by roads.						
<b>End state:</b> Deliver supplies and personnel providing a timely, safe and effective operation.						
8. Special Instructions						
<ul style="list-style-type: none"> <li>Follow instructions in IAP for requesting Ferry Tickets.</li> <li>All emergency medical requests for boats go through Pioneer Communications.</li> <li>* O/S – Operator Swaps As Needed, *CWN – Call When Needed, *M-Sa – Operator takes every Sunday off</li> </ul>						
9. Division / Group Communication Summary						
Function	Frequency	System	Channel	Function	Frequency	System
Command Repeater	See Comm Plan			Command	See Comm. Plan	
TAC				Air To Ground	See Comm. Plan	
Prepared by (Resource Unit Leader): Gary Duranceau			Approved by (Planning Section Chief): Mike Crawford		Date	7/5/24
					Time	1900



# AIR OPERATIONS SUMMARY ICS-220

Incident Name / Number Pioneer / WA-SES-000173	Sunrise 05:09	Sunset 21:00	Airport S10	Pumpkin 21:30
General Remarks, Safety Notes, Hazards, Air Operations Special Equipment, etc.:				
<p>*Order All Aircraft over Command to Helibase.</p> <p>*Sanitize Buckets before changing water sources.</p> <p>*Clear drop area/line before initiating drop sequence.</p> <p>*Be mindful of all overhead and environmental hazards while working with aircraft.</p> <p>*All GPS coordinates to be collected in Degrees, Decimal, and Minutes (DDMM)</p> <p>*** WINDS: return to helibase if winds become unmanageable.</p> <p>*Aviation daily cost to: 2024.pioneer.finance@firenet.gov</p> <p>*Aviation daily cost to: pioneerhelibase2024@gmail.com</p>				

Incident Frequencies	RX	Tone	TX	Tone	AM/FM
Air to Air Primary (A-8)	123.4000		123.4000		AM
Air to Air Secondary (A-9)	118.2750		118.2750		AM
A/G Pri Tactical (A-10)	169.1500		169.1500		FM
A/G Sec Operational (A-11)	168.4000		168.4000		FM
A/G 3 (TOLC)	166.6125		166.6125		FM
DECK	163.1000		163.1000		FM
COMMAND	See ICS 205 Communications Plan				
VMED 29	155.3475	156.7	155.3475	156.7	FM
AIR GUARD	168.6250		168.6250	110.9	FM
National Flight Following	168.6500	110.9	168.6500	110.9	FM

HELICOPTERS - Assigned						
FAA #	TYPE	Make/Model	Helibase	Start	Avail	Remarks
HB-16FH (A-22)	1	UH-60	Valley	0800	0900	BKT/LL
HB-161KA (A-24)	1	K-1200	Valley	0800	0900	BKT/LL
HB-344RA (A-45)	1	CH-47D	Valley	0800	0900	BKT/LL
H-527 (H-811KA) (A-94)	2	Bell 212HP	Chelan	0800	0900	BKT/LL/Pax
H-669H (A-98)	2	Bell 205 AT ++	Chelan	0800	0900	BKT/LL/Pax
H-234BH (A-99)	3	AS-350B3	Chelan	0800	0900	Recon/BKT/LL/Medical
H-544AS (A-60)	3	AS-350B3	Chelan	0800	0900	HLCO/Recon
H-407RL (A-1)	3	Bell 407	Chelan	0800	0900	**Unavailable**
H-125CL (A-91)	3	AS-350B3e	WEN	0800	0900	Short Haul/Recon

HELICOPTERS - GACC Prepo and Lend/Lease						
FAA #	TYPE	Make/Model	Helibase	Start	Avail	Remarks
H-205TK	2	Bell 205A	Chelan	0800	0900	**Unavailable**

FIXED WING AA/HLCO						
Call Sign	Type	Make/Model	Base	Call Sign	Avail	Remarks
UR-31	3	A7X	Lucerne	2200	2200	IR/PSD
UMR-45 Baker River IHC	4	Anafi	DIV Z	0600	2200	IR
UMR-46 Entiat IHC	4	Anafi	DIV A	0600	2200	IR

Date Prepared				Time Prepared				Date Prepared				Prepared By			
Operational Period - Date		Shutdown		Helibase Information		Pioneer HB		Valley HB		Operational Period - Date		Operational Period - Time		Locating - ASGS & Med/Helibase - AOB	
7/5/2024		7/6/2024		TFR (A-74) Surface to 10,000'		4/6779 TFR Freq 123.4000		In Effect - 24 Hours		7/5/2024		0700-2100		Medivac Ship Information	
7/6/2024		21:00		Helibase Information		Pioneer HB		Valley HB		7/6/2024		0700-2100		Medivac Ship: N234BH, AS-350B3	
7/6/2024		21:00		Helibase Information		Location		Local		7/6/2024		0700-2100		Call Helibase to launch	
7/6/2024		21:00		Helibase Information		47 51.96 N		48 25.667 N		7/6/2024		0700-2100		Medical onboard: EMT and Litter Kit	
7/6/2024		21:00		Helibase Information		119 56.96 W		120 08.513 W		7/6/2024		0700-2100		Request Procedure for This Aircraft:	
7/6/2024		21:00		Helibase Information		Pioneer HB (Chelan Airport)		Phone: 971-762-8575		7/6/2024		0700-2100		Commo on Command, and AVG's	
7/6/2024		21:00		Helibase Information		Valley HB (Methow Valley Airport)		Phone: 971-727-7255		7/6/2024		0700-2100		Short-Haul Platform:	
7/6/2024		21:00		Helibase Information		H14 (Sheekin AP) 148 20.75N / 120 43.25W		H11 148 10.755N / 120 31.803W		7/6/2024		0700-2100		MOCA N125CL, AS-350B3e	
7/6/2024		21:00		Helibase Information		H15 148 08.754N / 120 29.813W		H5 148 12.162N / 120 35.447W		7/6/2024		0700-2100		Operational Hours: 0900 to 2100	
7/6/2024		21:00		Helibase Information		H16 148 07.74N / 120 29.55W		H10 148 14.050N / 120 36.461W		7/6/2024		0700-2100		Order through AOB(D)Helibase/CWICC	
7/6/2024		21:00		Helibase Information		H25 147 59.212N / 120 16.526W		H12 148 13.325N / 120 35.908W		7/6/2024		0700-2100		HMGB: Teague Walsh-Felz, Cell: (608) 354-4782	

1. Incident Name:		2. Date/Time Prepared:		3. Operational Period:						
PIONEER		Date: 07/05/2024 Time: 1600	Date/Time From: 07/06/2024 0600	Date/Time To: 07/07/2024 0600						
<b>4. Basic Radio Channel Use:</b>										
Zone Group	Ch #	Function	Channel Name/Trunked Radio	Assignment	RX Freq	RX Tone/NAC	TX Freq	TX Tone/NAC	Mode (A,D, or M)	Remarks
	1	TACTICAL	TAC 1	DIV A & S	168.0500	123.0	168.0500	123.0	A	
	2	TACTICAL	TAC 2	DIV D	168.2000	123.0	168.2000	123.0	A	
	3	TACTICAL	TAC 3	LAKESIDE	168.6000	123.0	168.6000	123.0	A	
	4	TACTICAL	TAC 4	DIV H / CONT	166.7250	123.0	166.7250	123.0	A	
	5	TACTICAL	TAC 5	ROADS	166.7750	123.0	166.7750	123.0	A	
	6	TACTICAL	TAC 6	BOAT	168.2500	123.0	168.2500	123.0	A	
	7	COMMAND	CMD 7	ALL	168.4750	123.0	165.4000	123.0	A	CHELAN BUTTE
	8	COMMAND	CMD 8	ALL	169.5375	123.0	164.7125	123.0	A	OLD MAID MT
	9	COMMAND	CMD 9	ALL	170.4500	123.0	168.1000	123.0	A	MOORE MT
	10	COMMAND	CMD 10	ALL	170.0125	123.0	165.2500	123.0	A	SLIDE RIDGE
	11	COMMAND	CMD 11	ALL	170.4125	123.0	165.9625	123.0	A	FOX PEAK
	12	TACTICAL	A/G PRI	ALL DIVS	169.1500	000.0	169.1500	000.0	A	
	13	AIR TO GROUND	A/G SEC	ALL DIVS	168.4000	000.0	168.4000	000.0	A	
	14	AIR TO GROUND	A/G 3	ALL DIVS	166.6125	000.0	166.6125	000.0	A	TAKE OFF LANDING CHANNEL
	15	AIR TO GROUND	VMED 29	ALL DIVS	155.3475	156.7	155.3475	156.7	A	AIR EMS COORDINATION
	16	AIR TO GROUND	AIRGUARD	ALL DIVS	168.6250	000.0	168.6250	110.9	A	EMERGENCY AIRCRAFT CONTACT
<b>5. Special Instructions:</b> 24 hour staffing: PIONEER COMMUNICATIONS PHONE NUMBER: (208) 891-7948 / CURRENT CLONE "PIE 6-21"										
<b>6. Prepared By COM1</b>				Name: SETH BAUMGARTEN				Signature: <i>Seth Baumgarten</i>		
ICS 205				IAP Page				Date/Time: 07/05/24 1600		



1. Incident Name:		2. Date/Time Prepared:		3. Operational Period:						
<b>PIONEER Branch IV &amp; V</b>		Date: 07/05/2024 Time: 1600	Date/Time From: 07/06/2024 0600	Date/Time To: 07/07/2024 0600						
4. Basic Radio Channel Use:										
Zone Group	Ch #	Function	Channel Name/Trunked Radio	Assignment	RX Freq	RX Tone/NAC	TX Freq	TX Tone/NAC	Mode (A, D, or M)	Remarks
	1	TACTICAL	TAC 1	DIV A & S	168.0500	123.0	168.0500	123.0	A	
	2	TACTICAL	TAC 2	DIV D	168.2000	123.0	168.2000	123.0	A	
	3	TACTICAL	TAC 3	LAKESIDE	168.6000	123.0	168.6000	123.0	A	
	4	TACTICAL	TAC 4	DIV H / CONT	166.7250	123.0	166.7250	123.0	A	
	5	TACTICAL	TAC 5	ROADS	166.7750	123.0	166.7750	123.0	A	
	6	TACTICAL	TAC 6	BOAT	168.2500	123.0	168.2500	123.0	A	
	7	TACTICAL	A/G PRI	ALL DIVS	169.1500	000.0	169.1500	000.0	A	
	8	AIR TO GROUND	A/G SEC	ALL DIVS	168.4000	000.0	168.4000	000.0	A	
	9	AIR TO GROUND	A/G 3	ALL DIVS	166.6125	000.0	166.6125	000.0	A	
	10	COMMAND	CMD 10	ALL	170.0125	123.0	165.2500	123.0	A	SLIDE RIDGE
	11	COMMAND	CMD 11	ALL	170.4125	123.0	165.9625	123.0	A	FOX PEAK
	12	COMMAND	CMD 12	ALL	170.6875	123.0	166.5750	123.0	A	GOAT MOUNTAIN
	13	LOCAL RPTR	GOAT	ALL	172.3500	146.2	165.0125	118.8	A	GOAT MOUNTAIN
	14	LOCAL RPTR	MCLUR	ALL	172.3500	146.2	165.0125	103.5	A	McCLURE MTN
	15	AIR TO GROUND	VMED 29	ALL DIVS	155.3475	156.7	155.3475	156.7	A	AIR EMS COORDINATION
	16	AIR TO GROUND	AIRGUARD	ALL DIVS	168.6250	000.0	168.6250	110.9	A	EMERGENCY AIRCRAFT CONTACT
5. Special Instructions: 24 hour staffing: PIONEER COMMUNICATIONS PHONE NUMBER: (208) 891-7948 / CURRENT CLONE "IV"										
6. Prepared By COML										
Name: SETH BAUMGARTEN				Signature: <i>Seth Baumgarten</i>						
IAP Page				Date/Time: 7/5/24 1600						
ICS 205										

1. Incident Name:		2. Date/Time Prepared:		3. Operational Period:						
<b>PIONEER IA N Chelan</b>		Date: 07/05/2024 Time: 1600	Date/Time From: 07/06/2024 0600	Date/Time To: 07/07/2024 0600						
<b>4. Basic Radio Channel Use:</b>										
Zone Group	Ch #	Function	Channel Name/Trunked Radio	Assignment	RX Freq	RX Tone/NAC	TX Freq	TX Tone/NAC	Mode (A,D, or M)	Remarks
	1	LOCAL DISPATCH	Fire 1 Rp		154.4300	110.9	153.8900	D051	A	
	2	COMMAND	North Com Rp		155.3550	100.0	150.7900	100.0	A	
	3	TACTICAL	Goat Tac Rp		159.0675	110.9	153.8000	100.0	A	GOAT MNT
	4	TACTICAL	Orange		154.2650	107.2	154.2650	107.2	A	
	5	TACTICAL	Black		154.3400	151.4	154.3400	151.4	A	
	6	TACTICAL	DNR Common		151.4150	103.5	151.4150	103.5	A	
	7	LOCAL RPTR	DNR Chelan Rp		159.2250	156.7	151.4750	156.7	A	CHELAN BUTTE
	8	AIR TO GROUND	DNR A/G 1		159.2700	103.5	159.2700	103.5	A	
	9	LOCAL RPTR	Butte Tac Rp		155.1225	192.8	159.0675	162.2	A	CHELAN BUTTE
	10	TACTICAL	FS Win Tac		167.5500	000.0	167.5500	000.0	A	
	11	LOCAL RPTR	FS Goat Rp		169.8750	146.2	172.3500	118.8	A	GOAT MNT
	12	LOCAL RPTR	FS Slide Rp		173.0500	146.2	164.9125	141.3	A	SLIDE RIDGE
	13	AIR TO GROUND	FS A/G 40		167.4500	000.0	167.4500	000.0	A	
	14	TACTICAL	FS TAC		168.2000	000.0	168.2000	000.0	A	
	15	LOCAL RPTR	FS BADGER Rp		173.0500	146.2	164.9125	127.3	A	BADGER MNT
	16	TACTICAL	RED NET		153.8300	000.0	153.8300	000.0	A	
<b>5. Special Instructions: 24 hour staffing: PIONEER COMMUNICATIONS PHONE NUMBER: (208) 891-7948 / CURRENT CLONE "IA N CHELAN"</b>										
<b>6. Prepared By COM1</b>				Name: SETH BAUMGARTEN				Signature: <i>Seth Baumgarten</i>		
ICS 205				IAP Page				Date/Time: 7/5/24 1600		





We have all been there! The words ring in our head or we hear in someone's voice, "A few more inches to the left" or "I was just standing in that spot". These are called near misses. OSHA defines a near miss as: *an incident in which no property was damaged and no personal injury was sustained, but where, given a slight shift in time or position, damage or injury easily could have occurred.*

**Why near miss reporting is important: (not even close to being an exhaustive list)**

1. It usually identifies an unsafe condition or an unsafe act.
2. It may reveal an operational blind spot.
3. It may reveal a poorly designed piece of equipment.
4. It could prevent the next accident.
5. It may show a trend that is leading toward the next accident. (Think Swiss cheese model)
6. **It will reduce risks and the potential for harm.**

**WAIT!** Read number 6 again. Is it a true statement? Words matter. What if it said, "It should reduce risks and the potential for harm."? Do you see the difference?

**Reality Strikes:**

Reports are generated and published in Safenet, Safecom, and [www.wildfirelessonslearned.net](http://www.wildfirelessonslearned.net). Are we really learning if we keep reporting the same actions over and over?

You may have heard the phrase, "A safety culture is a reporting culture". This is only partially true. To truly have a safety culture we have to take action. Try this on for size, "**Lessons learned is only effective if it becomes lessons applied**".

**ACTION ITEM FOR THE DAY:**

Take a few minutes today to share a near miss story with your module. Listen carefully, and if you hear, "I won't let that happen again" then you have just heard how we move **lessons learned to lessons applied!**

NWCG WEEK OF REMEMBRANCE DAY



Human Factors, Honoring Through Learning

# **PIONEER FIRE HUMAN RESOURCES MESSAGE**

**July 6, 2024**

## **Building Trust and Respect In Communities**

As wildland firefighters, you often find yourselves on the frontlines of natural disasters, working tirelessly to protect homes and communities from the threat of wildfires. But your work doesn't just stop at fighting fires - it also requires building strong relationships with the people we're serving. That's why respect is so important between us and the local community.

Respect is key to building trust and earning the respect of those being protected. When firefighters show genuine care and concern for the community, it demonstrates that they are fighting not just for property and lives, but for the community itself. Prioritizing respect means listening to concerns, adapting to needs, and being approachable, transparent, and open to feedback. By doing so, firefighters can create a safer and more effective response, receiving critical information and building lasting relationships.

So let's make sure to put in the effort to build those relationships today. Let's show up with a willingness to listen, to learn, and to serve. Let's demonstrate our respect for the community through our words and actions. Because when we do, we'll be better equipped to protect not just property and lives, but also the very fabric of the communities we're serving.

Rhonda Marchand, HRSP-T  
Margaret Dietrich, HRSP and Training Specialist 360-701-3154, [mvdietrich2@gmail.com](mailto:mvdietrich2@gmail.com)



## FINANCE MESSAGE

**Finance Email:** [2024.pioneer.finance@firenet.gov](mailto:2024.pioneer.finance@firenet.gov)

**Finance Phone:** 484-501-1835

**This incident requires electronic documentation.** Please email your time to the address above. Scanned PDF's please, no .JPG's. Feel free to call finance for help if needed. Scanners are also available at ICP.

### Required Documents

Overhead, Agency Crews & Cooperators	Contract Resources
<b>Finance docs needed:</b> Resource Order, Manifest, Cooperative Agreement, Casual Hire Form w/ECI# (as applicable)	<b>Finance docs needed:</b> Resource Order, Manifest, Full Contract/Agreement, Certifications ( <i>if required</i> ) Pre-Inspection
<b>Daily:</b> CTRs, Shift Tickets  <b>CTR's should be named as:</b> CTR_RO#_YYMMDD-DD (Ex: CTR_O235_240605-07)  Electronic CTR available! Use QR code on front cover	<b>Daily:</b> CTRs, Shift Tickets, receipts (claims, etc.) <b>NOTE: Document travel times and odometer readings</b>  <b>Shift Tickets should be named as:</b> ST_RO#_YYMMDD-DD (Ex: ST_E5_240623-27)  Electronic shift ticket available! Use QR code on front cover
<b>Demob:</b> Signed OF-288; Signed OF-286	<b>Demob:</b> Contractor Evaluations, Shift Tickets, receipt(s) for Addition/Deductions, Post-Inspection, Signed OF-286
<p><b>"H-Pay"- Entitlement to Hazardous Pay Differential (5 CFR 550.904) - Hazard pay MUST be supported by a justification. If justification is not provided, you chance losing your entitlement.</b></p>	<p><b>Please call finance regarding issues with your time:</b></p> <p>No one on List today, <b>any questions for Finance, please email us. Thank You.</b></p>

Incident Name: **Pioneer**  
 Incident Number: **WA-SES-000173**  
 Financial codes:  
 WA DNR – 221-LDW  
 DOI – RZ79  
 USDA – PNRZ79 (1522)

**Please make sure you check in using QR code on the front of the IAP and then email your time daily.**  
**THANK YOU!!**

## **Resource Advice**

Lead READ: Eireann Pederson 360-854-8197, [eireann.pederson@usda.gov](mailto:eireann.pederson@usda.gov)

REAF: Brigitte Ranne 509-663-6118, [brigitte.ranne@usda.gov](mailto:brigitte.ranne@usda.gov)

REAF: Hector Rodriguez 509-393-5379, [Hector.Rodriguez3@usda.gov](mailto:Hector.Rodriguez3@usda.gov)

REAF: Carrissa Camenson 360-899-7147, [carissa.camenson@usda.gov](mailto:carissa.camenson@usda.gov)



Resource Guidelines

### *MIST for Spike Camp and Lucerne Forward Operating Base Management*

- Employ minimum impact suppression tactics (MIST) where feasible, especially in remote or sensitive areas.
- If spike camps are necessary, use existing, or previously impacted campsites where available. If existing campsites are not available; use your local resource advisor to help identify the most resilient sites in rocky or sandy soils. Avoid camping in wet meadows, along streams, or on lake shores.
- Store food properly so that it is not accessible to wildlife. Consider hanging food in trees at least 15 feet off the ground and 5 feet from the trunk of the tree, or store food in sealable containers. Store food away from the campsite (300 feet is ideal) to reduce the risk of human and bear (and rodent!) conflicts.
- Do not let garbage and food scraps accumulate in camp. All garbage and food scraps need to be removed from the camp ASAP and before leaving the site.
- Minimize disturbance to land in preparing bedding and campfire sites. Do not clear vegetation, trench, or excavate a flat spot to create bedding sites.
- Do not use nails in trees. Don't construct camp furniture.
- If a campfire is built for warmth in the evening, build either a pit or mound fire. Use dead and down firewood. Use small diameter wood that burns down more cleanly. Don't burn plastics or aluminum - pack it out with the rest of the camp garbage.
- In small spike camp situations (not Lucerne), individuals should use the "cat-hole" method of disposing of human waste. Toilet seats should be located a minimum of 200 feet from water sources. Holes should be dug 6-8 inches deep.
- In large or long term spike the camps use helicopters, boats, or pack stock to deliver portable backcountry latrines and remove human waste if necessary. If the camp does not have adequate pack, boat, or air support for human waste management, establish community latrines well away from water sources and common areas. Use human waste bags, if necessary

### *Dipping and Drafting*

- No cross-dipping between water bodies. All buckets or snorkels should be cleaned, inspected, and dried in the sun if they must be used between lakes. Dipping in small lakes must be pre-approved by the READ or AA.
- When drafting, use already disturbed areas for stream access (road crossings, dispersed campsites) to reduce the need for riparian vegetation clearing.
- Use screens (3/32" inch) for all pumping operations.
- Use containment pads and basins under pumps and fuel cans. Ensure a spill kit is present with every operating pump.



### *Invasive Species*

- The fire is burning within an infestation of common crupina, a WA State Class A Noxious weed. Prevent spread of crupina off site – plan to wash hose and other equipment. Request fire fighters brush boots before boarding boat or before entering National Park Service Land.
- Inspect slings and remove all plant/soil material prior to use.
- Ensure all camps, staging areas, helispots and cargo areas are free of invasive plants to prevent spread to un-infested areas.
- Weed wash all vehicles, including boats, when they arrive to the incident and when demobed.

### *Fisheries /Aquatic Recommendations*

- If trees must be felled in riparian areas for suppression or safety reasons, fell them toward streams where possible and minimize bucking where possible.
- Non-mechanized suppression activities are recommended within Riparian Reserves (150-300 ft from stream channel). For example, consider hand lines instead of dozer lines when feasible.

### *Retardant Use*

- Retardant avoidance areas are present in the fire suppression area for both aquatic and terrestrial species.
- Track all retardant drops – locations and amounts.
- Report all mis-applications ASAP to READ. Monitoring and reporting of misapplications is required.

### *Wet Meadows*

- No line or other disturbance in wet meadows in the Summer Blossom area (east of South Navarre campground above and below the 8200 road) and at Coyote and Poison Springs at the headwaters of their respective creeks.

### *Dry Meadows*

- Minimize disturbance from staging and parking areas in dry meadows. These areas recovery slowly and are vulnerable to invasive plant infestation.

### *White Bark Pine*

- Avoid cutting white bark pine whenever possible. Needles of 5 keep it alive! Ask READ for help with ID.

### *Burnout operations*

- Plan to protect whitebark pine of all ages and mature cold and moist forest during burnouts. READ consultation and line officer approval is required for burn plans that include these forest types.
- During burnouts modify firing to retain large trees, large snags and large down wood in forests whenever possible.
- Minimize total acres burned in burnouts.
- Incorporate typical resource protection measures used in RX burning whenever it is safe and practical to do so (such as retention of green islands in moist areas).
- Provide a map of areas that were burned as part of the burnout operation (for use in emergency consultation).
- If cultural resources are discovered during suppression activities, leave on site and notify READ.

# LOGISTICS NOTES

---

## Pioneer Fire ICP

Breakfast 0530 – 0900  
Lunch @ Refer Trailer – 0500 - 2100  
Dinner 1800 -2100  
Shower 0500 – 1200 & 1400 – 2200  
Supply 0600 – 2200  
Ground Support 0700 – 2100  
Fuel Tender 0700 – 2100  
Weed Wash 0700 – 1400 & 1600 – 2000

## FOB Lucerne

Breakfast 0600 - 0900  
Lunch – Pickup with Breakfast  
Dinner 2030 – 2130  
Shower 0500 – 1200 & 1400 – 2200  
Supply 0600 – 2200

## **Ground Support Contact Numbers:**

Casey Glade 435-704-4702      Joe Keady 541-733-6701

## **Ordering Information**

Submit all orders on General Message Form 213 to the following email address.

[2024.pioneer.ordering@firenet.gov](mailto:2024.pioneer.ordering@firenet.gov)

Ordering Manager Noe Reyes 484-501-1821

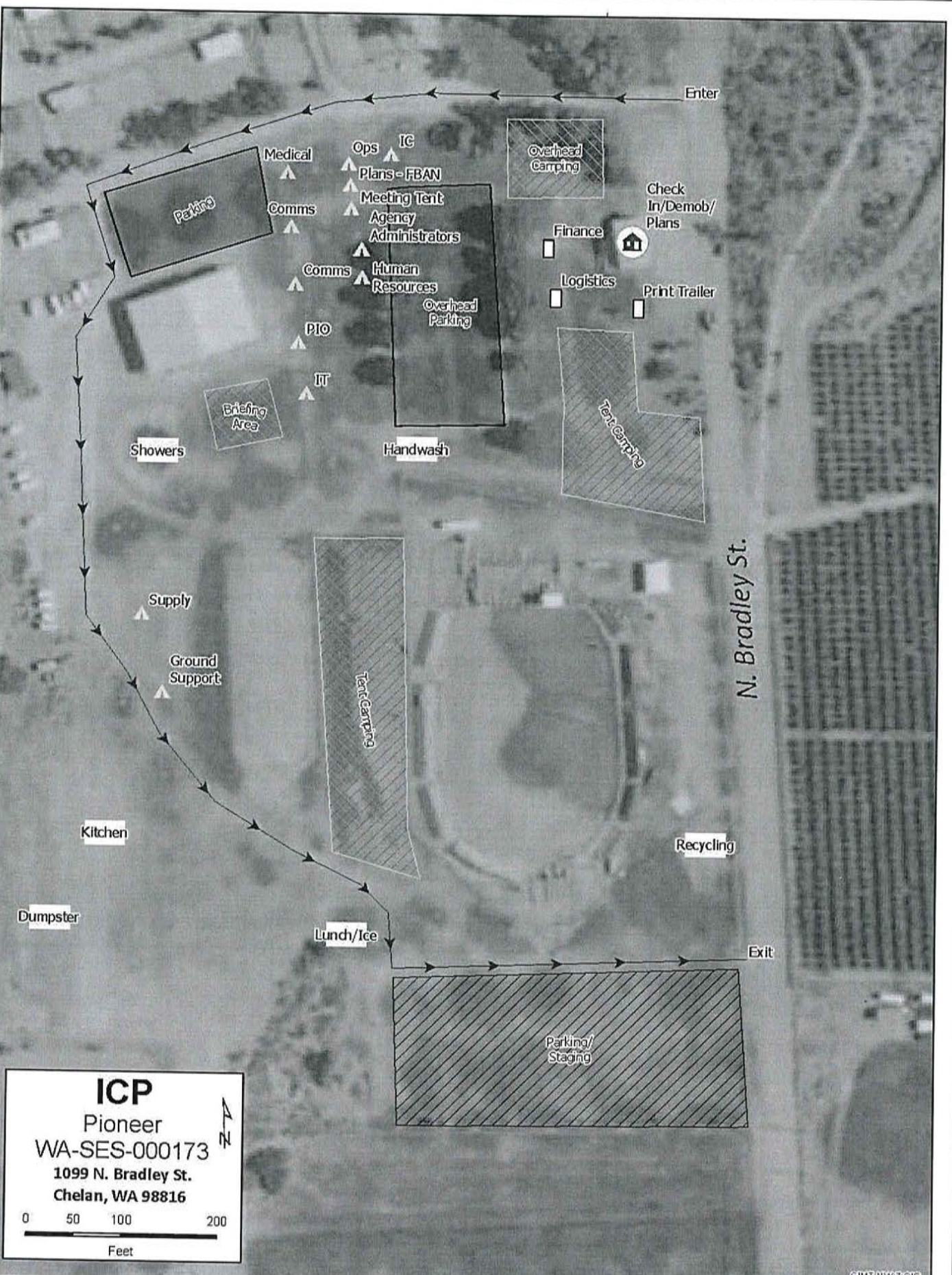
## **ICP Camping & Parking Under Maple Trees**

The sticky oily substance dripping from the maple trees next to Main Street was determined to be insect residue, sometimes called "Honeydew". This substance is nontoxic and has the potential to damage cars and tents if not removed quickly. Avoid parking or camping under the maple trees to prevent potential damage.

## **Recycling Scorecard on Incident**

Plastic Bottles	852-lbs	Aluminum Cans	233-lbs
Cardboard	11,398-lbs	Office Paper	794-lbs
Plastics 1 & 2	147-lbs	Glass	13-lbs
Batteries	261-lbs	Food Composting	10,728-lbs
Cooking Oil	246-gal	Food Donations	347-lbs
Trash	22,890-lbs	Recycling	26,723-lbs

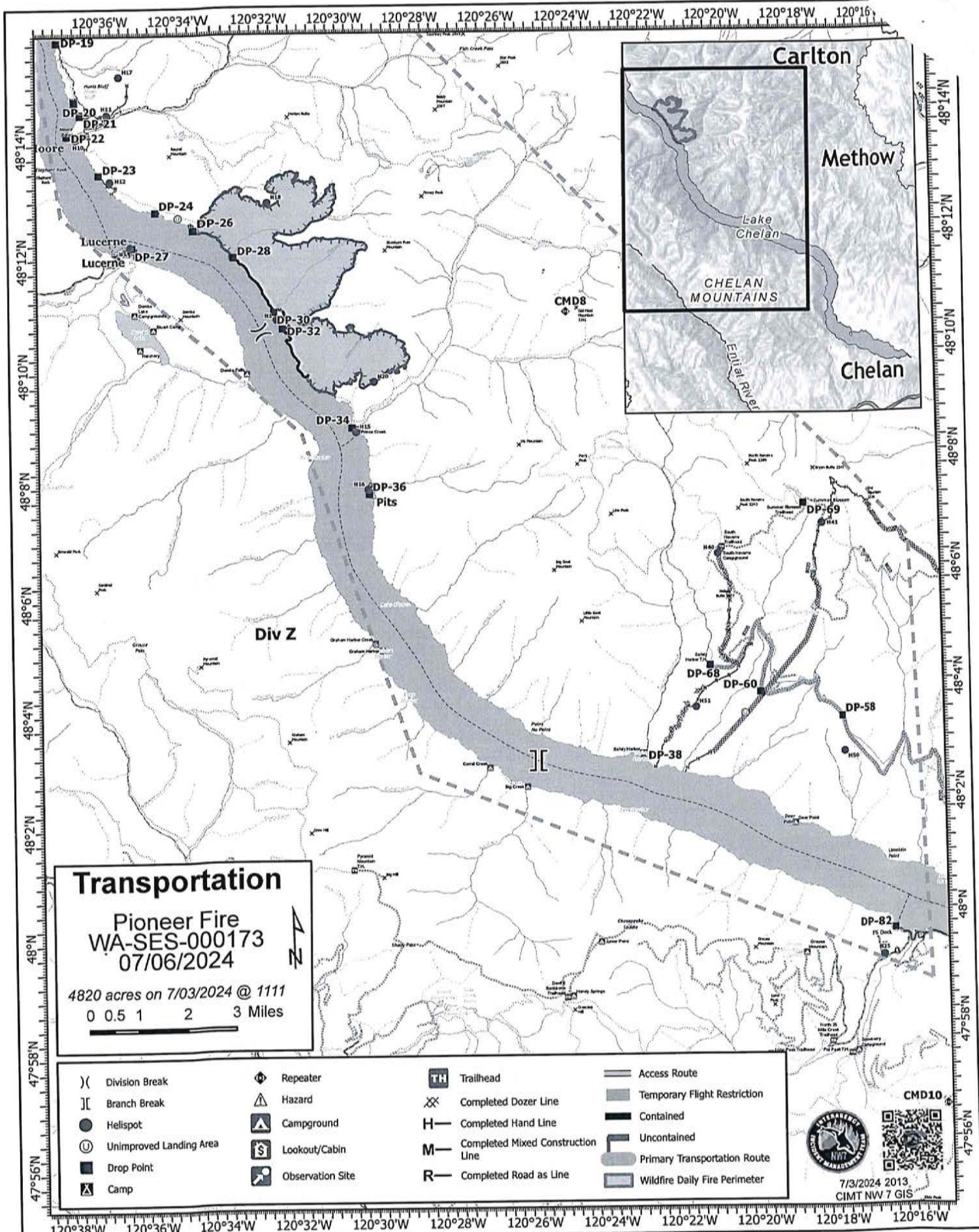




**ICP**  
 Pioneer  
 WA-SES-000173  
 1099 N. Bradley St.  
 Chelan, WA 98816

0 50 100 200  
 Feet







# SHORT-HAUL OPERATIONS

## CAPABILITIES

- During an operational Short-Haul the helicopter is capable of inserting Short-Haulers into an area with tight canopy cover and/or technical terrain.
- Haul line lengths range from 100 feet to 350 feet.
- Short hauler and/or medical gear can be delivered to the medical scene even if extraction by short-haul is not necessary.

## ORDERING

- EMT or Medical Incident IC determines medical extraction is required.
- Follow local established procedures and/or Medical Incident Report (MIR) in the IRPG.
- Confirm aircraft type, call sign, estimated time of arrival and frequency.
- Give site selection information when ordering: hazards (i.e. ash, smoke, snags, aerial), tree height, terrain, and patient transport configuration (supine or seated position). Repeat hazards and give updated weather conditions as well as brief patient update to responding helicopter.

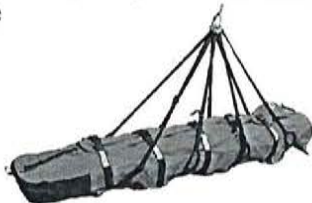
**PROCESS:** The helicopter will fly to the coordinates provided. They will make contact with ground personnel on scene with the patient using an identified air-to-ground frequency. The helicopter will complete a short-haul recon and size up, gather patient update information and then fly to a landing zone (LZ) to configure for short-haul operations. The helicopter will be monitoring the appropriate air-to-ground, air guard and victor frequencies. From this point, ground resources should only contact the helicopter in case of an emergency. During the insertion and extraction process ground personnel must be clear of the area.

## ON SCENE – EXPECT THE FOLLOWING

- 1 or 2 rescuers (at least one qualified as an EMT or higher)
- Backboard (if needed and not already on scene)
- All equipment necessary for patient extraction

The Patient Extraction Bag accommodates most backboards.

- A patient on a backboard, TRS, SKED or litter will be inserted into the



The Seat Harness is used for patients not requiring the use of a backboard.





Team 7 Line Supply Order		Order #			
Date & Time Order Placed	Deliver To Location/Time (Division, Drop Point, Heli Spot, Lat/Long)	Delivery Method (Driver, Heli, DWS to P/U)			
Order received in Communications (name & time)		Ordered by (name and Position)			
Order received in Supply by (name & time)		Ground Contact			
Order received in Transportation by (name & time)		Contact Freq.			
Order received in Helibase by (name & time)		Special Instructions/line length/ elevation			
Order shipped to line by (name & time)					
#	Item	Amount	#	Item	Amount
1	Meals #1842	MRE 12/Cs	33	Bath in a Bag, Large #0712	
2	Water #0048	5 gal cubies	34	Bath in a Bag, Small #0206	
3	Gatorade	24/Cs	35	Coffee Kit #0480	
4	Batteries, AA #0030	24/pg	36	Coffee 3lb Can	
5	Batteries, AAA #7471	24/pg	37	Folda-Tank 1500 gal #0664	
6	Gas Unleaded	5 gal	38	Pumpkin 3000 gal. #0568	
7	2 Cycle Oil #7724	5 gal mix	39	Backpack Pump #0909	
8	2 cycle Oil #3444	1 Gal mix	40	Mark III pump + Kit #0148	
9	Diesel	5 gal	41	Lightweight Pump + Kit #8606	
10	Bar Oil #1880	1 Gal	42	Volume Pump #1222	
11	Bar Oil #1869	1 Qt	43	Hose 1 1/2" #1239	100' lg
12	Shovel #0171		44	Hose 1" #1238	100' lg
13	Pulaski #0146		45	Hose 3/4" #1016	50' lg
14	McLeod #0296		46	Reducer 1 1/2" to 1" #0010	
15	Combi #1180		47	Reducer 1" to 3/4" #0733	
16	Chainsaw Kit #0340		48	Gated "y" 1 1/2" #0231	
17	Drip Torch Empty #0241		49	Gated "y" 1" #0259	
18	Fussee #0105		50	Gated "y" 3/4" #0904	
19	Sleeping Pad #1566		51	In-line Tee 1 1/2" to 1" #0230	
20	Sleeping Bag #0022		52	Nozzle KK 1 1/2" #1082	
21	Fly Tent #0070		53	Nozzle KK 1" #1081	
22	Plastic Sheeting #0143		54	Nozzle 3/4" #0136	
23	Parachute Cord #0533		55	Nozzle, Forester 1" #0024	
24	Fiber Tape #0222		56	Sprinkler kit #1048	
25	Garbage Bags #0021		57		
26	Leadline 3000 lbs #0528		58		
27	Cargo Net 3000lb #0531		59	Team 7 Hose Lay Kit	
28	Swivel 3000lb #0526		60		
29	Slingshble Bg 72 Gal Blivet #0426		61		
30	Foam 5 gal. #1145		62		
31	Toilet Paper #0142		63		
32			64		

Item	Amount
1 1/2 in. synthetic hose	1000 ft.
1 in. synthetic hose	500 ft.
3/4 in. garden hose	500 ft.
1 1/2 in. gated wye	5 ea.
1 1/2 in. - 1 in. reducer	5 ea.
1 in. combination nozzle	5 ea.
1 in. - 3/4 in. reducer	5 ea.
3/4 in. valve, shutoff, ball	5 ea.
3/4 in. nozzle	5 ea.
3/4 in. gated wye	5 ea.

Item	Amount
Sprinkler head w/ couplings	4 ea.
3/4 in. garden hose	250 ft.
1 1/2 x 1 1/2 x 1 tee	4 ea.
1 x 3/4 reducer	4 ea.
1 1/2 in. - 1 in. reducer	1 ea.
3/4 in. gated wye	2 ea.
3/4 in. valve, shutoff, ball	4 ea.
3/4 in. nozzle	1 ea.
3/4 in. pressure regulator	4 ea.
3/4 in. nozzle, plastic 60 GPM	1 ea.
10 in. adjustable wrench	1 ea.

**LINE ORDER PROCESS**

Line orders from the field should go through the Communication Unit via radio (primary) or 24-hour phone number shown on the cover of the IAP. All other supply requests should be submitted in person to the Supply Unit.



## Check In Message

- Please complete the virtual check-in process via the QR code on the front cover.
- You are not checked in until you provide the following:
  - 1) Red Cards
  - 2) Roster/Manifest
- Please email documents to: [2024.pioneer.checkin@firenet.gov](mailto:2024.pioneer.checkin@firenet.gov)

Any Questions:

Phone: 509-661-5372

Email: [2024.pioneer.checkin@firenet.gov](mailto:2024.pioneer.checkin@firenet.gov)

---

## Demob Message

- Fliers complete the "Air Travel Request" via the QR code on the front cover 72 hours prior to flight date.
- Return supplies to the Cache.
- Return radios, antennas, etc., to Communications.
- All contract equipment and vehicles driven in fire area will need to do weed wash.
- Contact Finance about closing out your paperwork.
- Once the above items have been completed, SCAN the QR code on the front cover and complete the demob questions.

Any Questions:

Phone: 509-661-5376

Email: [2024.pioneer.demob@firenet.gov](mailto:2024.pioneer.demob@firenet.gov)



# Last Work Day & Demob Report

Page 1 of 1

Incident: PIONEER US-WA-SES-000173

Questions ?? - Jay at (509) 661-5376

Demob: 07/06

## OVERHEAD

ASGS	O-102	MOORE JR, DAVID A
FMOD	O-186	FMOD - FALLER MODULE - KINTNER TIMBER COMPANY LLC
RCDM	O-205	EVERSAUL, MARTIN LEE
STAM	O-131	MERAGER, JONATHAN

LWD: 07/06 ~ Demob: 07/07

## CREWS

CR2I	C-18	CR2I - NW - COLVILLE NF - MOB 3
------	------	---------------------------------

## EQUIPMENT

HOSU	E-20	HOSU - WESTERN WILDFIRE LLC - 206512
------	------	--------------------------------------

## OVERHEAD

ARCH	O-168	WINGATE, ERNEST
DIVS	O-174.77	METZGER, ERIC
FACL	O-227	DROTT, PETER NICHOLAS
FDUL	O-174.81	CODY, JOHN F
FELB	O-184	COZART, MARTIN JOHN
FMOD	O-185	FMOD - FALLER MODULE - BROTHERS FIRE LLC - MOD 01 -
HEQB	O-330	RAY, ASA WILLIAM
HEQB	O-337	HUMPHERYS, BRANDON LEE
OPBD	O-233	GOLDMAN, ROGER HAROLD
PIO1	O-105	JOHNSON, J MICHAEL
REAF	O-166	SPAAK, JORDAN LEE
TFLD	O-183	HAMMAN, HARLEY
WFM2	O-218	WFM2 - OLYMPIC WFM





1. Incident/Project Name			2. Operational Period			
<b>Pioneer Fire</b>			Date/Time: <b>07/06/24 0700-2100</b>			
<b>3. Ambulance Services</b>						
Name	Complete Address	Phone	Advanced Life Support (ALS) Yes No			
Lake Chelan EMS	Chelan, WA	911	X			
Douglas/Okanagan County Fire	Brewster, WA	911				X
Aero Methow EMS	Twisp, WA	911	X			
<b>4. Air Ambulance Services</b>						
Name	Phone/Channel	Frequency, Type of Aircraft & Capability				
Life Flight - Brewster	1-800-232-0911 911	VMED 29, Rotor, ALS, 24 hr				
Airlift NW - Wenatchee	1-800-426-2430 911	VMED 29, Rotor, ALS, 24 hr				
Medivac Ship	Command 7,8,9,10,11,12 (Linked)	VMED 29, Rotor, BLS, Daytime				
Mount Rainer Short Haul	Command 7,8,9,10,11,12 (Linked)	VMED 29, Rotor, BLS, Daytime, Short Haul				
Snohawk 10 - Snohomish	1-800-258-5990 911	VMED 29, Rotor, ALS, Daytime, Hoist				
Spokane County Hoist - Spokane	1-509-532-8930 911	VMED 29, Rotor, ALS, 24 hr, Hoist Daytime Only				
<b>5. Hospitals</b>						
Name	Degrees Decimal Minutes	Travel Time From Fire Air Boat		Phone	Heli-pad Yes No	Level of Care
Lake Chelan Health 110 S. Apple Blossom Drive Chelan WA	Lat: 47° 50' 20 N	30 Min	3 Hr	509-683-2474	X	Level IV Trauma
	Long: 119° 59' 20 W					
Central Washington Hospital (Confluence Health Central Campus) 1201 S. Miller Wenatchee WA	Lat: 47° 24. 43 N	1 Hr	4 Hr	509-433-3115	X	Level III Trauma
	Long: 120° 19. 28 W					
Harborview Medical Center 325 9 <sup>th</sup> Ave Seattle WA	Lat: 47° 36. 24 N	1.5 Hr	6 Hr	206-744-4025	X	Level I Trauma Burn Center
	Long: 122° 19. 45 W					
<b>ICP</b>	<b>EMS Responders &amp; Capability:</b>		Mariann Turley Cass Monroe		MEDL/AEMT MEDL(T)/EMTF	509-496-9370 509-724-0843
	Equipment Available on Scene:		ALS Kit, AED, O2, OTC meds			
	Medical Emergency Channel:		Command 7, 8, 9, 10, 11 (Linked)			
	ETA for Ambulance to Scene:					
	Air:		NA			
	Ground:		15 Min			
	Approved Heli-Spot:		NA			
	Lat:		NA			
Long:		NA				
<b>LUCERNE FOB</b>	<b>EMS Responders &amp; Capability:</b>		Londa Van Kirk MEDL/EMTF (Lucerne FOB) MEDIC 6 Steve Medina (Air Medical) EMT 4 Justin Dominguez (Boat Medical) MEDIC 10 Sean Hendron (Boat Medical)		360-815-7645 360-556-9568 509-741-0611 443-851-2014	
	Equipment Available on Scene:		ALS Kit, AED, O2, OTC meds			
	Medical Emergency Channel:		Command 7, 8, 9, 10, 11 (Linked)			
	ETA for Ambulance to Scene:					
	Air:		2 hr			
	Water/Ground:		3 hr			
	Approved Heli-Spot:					
	Lat:		H5 48° 12.1624' N			
Long:		120° 35.4476' W				
<b>BRANCH I</b>	<b>EMS Responders &amp; Capability:</b>		MEDIC 8 Rick Kelly (Lakeside) MEDIC 9 Benjamin McCall (Lakeside) EMT 5 Dave Repnik (DIV A) MEDIC 12 Ethan Biederman (DIV A)		509-290-3922 360-420-6492 509-881-4771 513-882-2837	
	Equipment Available on Scene:		ALS Kit, Monitor/Defib, O2			
	Medical Emergency Channel:		Command 7, 8, 9, 10, 11 (Linked)			
	ETA for Ambulance to Scene:					
	Air:		2 hr			
	Water/Ground:		3 hr			
	Approved Heli-Spots:					
	H1 48° 10.813' N		H11 48° 14.492' N		H15 48° 08.754' N	
	120° 31.925' W		120° 35.922' W		120° 29.813' W	
	H10 48° 14.099' N		H12 48° 13.381' N		H16 48° 07.744' N	
	120° 36.782' W		120° 35.919' W		120° 29.541' W	
Lat:		NA				
Long:		NA				



<b>BRANCH II</b>	<b>EMS Responders &amp; Capability:</b>	REMS 2 Brayden Kirk + 3 (DIV D) 509-264-8203 Jed Getman MEDL(T)/AEMF (Stehekin FOB) 541-391-3243
	Equipment Available on Scene:	ALS Kit, Monitor/Defib, O2, Rescue Gear
	Medical Emergency Channel:	Command 7, 8, 9, 10, 11 (Linked)
	ETA for Ambulance to Scene:	
	Air:	2 hr
	Ground:	3 hr
	Approved Heli-Spot:	
	Lat:	H14 48° 20.760' N
	Long:	120° 43.242' W
<b>BRANCH IV</b>	<b>EMS Responders &amp; Capability:</b>	AMBO 2 Anna Reynolds (DIV H) 509-768-5519 MEDIC 13 Anthony Bylski (DIV H) 248-752-5511
	Equipment Available on Scene:	ALS Kit, Monitor/Defib, O2
	Medical Emergency Channel:	Command 7, 8, 9, 10, 11,12 (Linked)
	ETA for Ambulance to Scene:	
	Air:	2 hr
	Ground:	3 hr
	Approved Heli-Spot:	NA
	Lat:	NA
	Long:	NA
<b>BRANCH V</b>	<b>EMS Responders &amp; Capability:</b>	MEDIC 7 Steve Drab (CONTINGENCY) 406-600-2059 MEDIC 11 Savannah Mclaughlin (DIV S) 435-590-4952 REMS 1 Ray Storm + 4 (DIV S) 415 637-0491 MEDIC 5 Brian Linacre (DIV S) 301-781-7990
	Equipment Available on Scene:	ALS Kit, Monitor/Defib, O2, Rescue Gear
	Medical Emergency Channel:	Command 7, 8, 9, 10, 11, 12 (Linked)
	ETA for Ambulance to Scene:	
	Air:	2 hr
	Ground:	3 hr
	Approved Heli-Spot:	
	Lat:	H25 47° 59.200' N
	Long:	120° 16. 521' W
<b>TBD</b>	<b>EMS Responders &amp; Capability:</b>	TBD
	Equipment Available on Scene:	
	Medical Emergency Channel:	Command 7,8,9,10,11 (Linked)
	ETA for Ambulance to Scene:	
	Air:	
	Ground:	
	Approved Heli-Spot:	NA
	Lat:	NA
	Long:	NA
<b>TBD</b>	<b>EMS Responders &amp; Capability:</b>	TBD
	Equipment Available on Scene:	
	Medical Emergency Channel:	Command 7,8,9,10,11 (Linked)
	ETA for Ambulance to Scene:	
	Air:	
	Ground:	
	Approved Heli-Spot:	NA
	Lat:	NA
	Long:	NA

Prepared By (Medical Unit Leader)	Date	Reviewed By (Safety Officer)	Date
Cass Monroe MEDLt	07/05/24	Matt Broyles SOFC	07/05/24
Signature: <i>Cass Monroe</i>		Signature: <i>Matt Broyles</i>	

**Medical Incident Report**

**FOR A NON-EMERGENCY INCIDENT, WORK THROUGH CHAIN OF COMMAND TO REPORT AND TRANSPORT INJURED PERSONNEL AS NECESSARY.**

**FOR A MEDICAL EMERGENCY: IDENTIFY ON SCENE INCIDENT COMMANDER BY NAME AND POSITION AND ANNOUNCE "MEDICAL EMERGENCY" TO INITIATE RESPONSE FROM IMT COMMUNICATIONS/DISPATCH.**

**Use the following items to communicate situation to communications/dispatch.**

**1. CONTACT COMMUNICATIONS / DISPATCH (Verify correct frequency prior to starting report)**

*Ex: "Communications, Div. Alpha. Stand-by for Emergency Traffic."*

**2. INCIDENT STATUS: Provide incident summary (including number of patients) and command structure.**

*Ex: "Communications, I have a Red priority patient, unconscious, struck by a falling tree. Requesting air ambulance to Forest Road 1 at (Lat./Long.) This will be the Trout Meadow Medical, IC is TFLD Jones. EMT Smith is providing medical care."*

Severity of Emergency / Transport Priority	<input type="checkbox"/> <b>RED / PRIORITY 1 Life or limb threatening injury or illness. Evacuation need is IMMEDIATE</b> <i>Ex: Unconscious, difficulty breathing, bleeding severely, 2° – 3° burns more than 4 palm sizes, heat stroke, disoriented.</i> <input type="checkbox"/> <b>YELLOW / PRIORITY 2 Serious Injury or illness. Evacuation may be DELAYED if necessary.</b> <i>Ex: Significant trauma, unable to walk, 2° – 3° burns not more than 1-3 palm sizes.</i> <input type="checkbox"/> <b>GREEN / PRIORITY 3 Minor Injury or illness. Non-Emergency transport</b> <i>Ex: Sprains, strains, minor heat-related illness.</i>
Nature of Injury or Illness & Mechanism of Injury	Brief Summary of Injury or Illness <i>(Ex: Unconscious, Struck by Falling Tree)</i>
Transport Request	Air Ambulance / Short Haul/Hoist Ground Ambulance / Other
Patient Location	Descriptive Location & Lat. / Long. (WGS84)
Incident Name	Geographic Name + "Medical" <i>(Ex: Trout Meadow Medical)</i>
On-Scene Incident Commander	Name of on-scene IC of Incident within an Incident <i>(Ex: TFLD Jones)</i>
Patient Care	Name of Care Provider <i>(Ex: EMT Smith)</i>

**3. INITIAL PATIENT ASSESSMENT: Complete this section for each patient as applicable (start with the most severe patient)**

Patient Assessment: See IRPG page 106

Treatment:

**4. TRANSPORT PLAN:**

Evacuation Location (if different): *(Descriptive Location (drop point, intersection, etc.) or Lat. / Long.)* Patient's ETA to Evacuation Location:

Helispot / Extraction Site Size and Hazards:

**5. ADDITIONAL RESOURCES / EQUIPMENT NEEDS:**

*Example: Paramedic/EMT, Crews, Immobilization Devices, AED, Oxygen, Trauma Bag, IV/Fluid(s), Splints, Rope rescue, Wheeled litter, HAZMAT, Extrication*

**6. COMMUNICATIONS: Identify State Air/Ground EMS Frequencies and Hospital Contacts as applicable**

Function	Channel Name/Number	Receive (RX)	Tone/NAC *	Transmit (TX)	Tone/NAC *
COMMAND					
AIR-TO-GRND					
TACTICAL					

**7. CONTINGENCY: Considerations: If primary options fail, what actions can be implemented in conjunction with primary evacuation method? Be thinking ahead.**

**8. ADDITIONAL INFORMATION: Updates/Changes, etc.**

**REMEMBER: Confirm ETA's of resources ordered. Act according to your level of training. Be Alert. Keep Calm. Think Clearly. Act Decisively.**