

INCIDENT OBJECTIVES	1. Incident Name PIONEER	2. Date Prepared 07/06/2024	3. Time 1900
----------------------------	------------------------------------	---------------------------------------	------------------------

4. Operational Period

Day Operations: 0700-2100

Strategic Framework:

The Pioneer Fire is a full suppression fire utilizing strategies and tactics that provide the highest likelihood of success while mitigating risks to the responders and public. Extreme terrain prevents direct attack. Indirect lines are being identified and established that reduces risk to responders while protecting identified values including private and federal infrastructure and recreational values.

Management Objectives:

- Ensure the safety and well-being of responders and the public by making timely risk-informed decisions that align with values at risk.
- Protect private and federal infrastructure and recreational values.
- Foster relationships with local cooperators and the public by providing coordinated, accurate, and timely information.
- Coordinate suppression activities with READ's to identify and mitigate current and future impacts to the landscape and resources.
- Treat each other with dignity and respect and act in a professional manner on the fire and in the communities.
- Manage cost commensurate with values at risk by coordinating with the Agency Administrators and Incident Business Advisors.

Operational Objectives:

- Implement an effective suppression strategy utilizing direct attack where and when appropriate to protect values at risk. When fire behavior, terrain, or safety concerns prohibit direct attack, utilize other suppression tactics such as indirect and point protection as appropriate to reduce risk to responders. Take advantage of natural features such as breaks in fuels, topographic features, or changes in weather.
- Establish indirect control lines with the highest probability of success which prevent fire spread into populated areas.
- Communicate with local law enforcement officials to ensure current and potential evacuations are coordinated.

6. Weather Forecast for Period

7. General Safety Message

8. Attachments (mark if attached)

X	Organization List - ICS 203	X	Medical 206WF - 8 Line	X	Finance Message
X	Div. Assignment Lists - ICS 204	X	Safety Message		Dutch Creek Protocol
X	Communications Plan - ICS 205		LCES - ICS 215A		Phone List
X	Medical Plan - ICS 206	X	Weather Forecast	X	Incident Map(s)
X	Air Operation Summary - ICS 220	X	Fire Behavior	X	Unit Log

Prepared by Planning Section Chief <i>Mike Crawford</i>	Approved by Incident Commander <i>[Signature]</i>
--	--

ORGANIZATION ASSIGNMENT LIST		IT Specialist		Mike Gascon / Chad Funnemark / Ben Smith (T)	
1. Incident Name		Receiving Distribution		Michael Hanson / David Richards (Stehekin) / Martin Eversaul (Lucerne)	
PIONEER		Ordering Manager		Noe Reyes / Kerry Johnston	
2. Date Prepared	3. Time Prepared	Ground Support Unit		Casey Glade / Joe Keady	
JULY 6, 2024	1800	Communication Unit		Seth Baumgarten / Michael Merrick (T)	
4. Operational Period		Communication Tech.		Keith Schaff / Kevin Judd	
JULY 7, 2024 0700 – 2100		Food Unit		Kristy Naughton / John Cody/Maxine Kline / Steven Bales (T)	
5. Incident Commander and Staff		Security Manager		Michael Fakier	
Position	Name	Medical Unit		Mariann Turley / Cass Monroe (T) / Jed Getman / (Stehekin) / Londa Van Kirk	
Incident Commander	Nate LeFevre	9. Operations Section			
Incident Commander (T)	Steve North	OPS Section Chief - Lead		Jon Larson / Jeff Bortner (T)	
Deputy Incident Commander	Chris Orr	OPS Section Chief - Planning		Rob Poyner (T)	
Safety Officer	Matt Broyles / Eric Brown	OPS Section Chief – Field		Seth Merritt	
Information Officer	Cheyne Rossbach	a. Branch I			
Liaison	Shawn Christianson / Greg Brody (Stehekin) / Mark Suba / Rhonda Marchand (T)	Branch Director		Scott Ebel/ Josh Verellen (T)	
Human Resources	Margaret Dietrich	Division	A	Seth Missal / James Fields (T)	
READ Liaison	Courtney Rowe	Group	Shore Protection	Travis Baker / Frank Heilman (T)	
6. Agency Representatives		Division	Z		
Agency	Name	b. Branch II			
USFS Oka/Wen Agency Admin	Chris Furr	Branch Director		Scott Ebel/ Josh Verellen (T)	
USFS Oka/Wen Agency Admin (T)	Paul Willard	Division	D	Andrew Schaffran	
DNR Agency Administrator	Larry Leach	c. Branch IV			
DNR Deputy Agency Administrator	Wyatt Leighton	Branch Director			
NPS Agency Administrator	Don Striker	Division	H		
NPS Agency Representative	Denise Shultz	d. Branch V			
7. Planning Section		Branch Director			
Plans Section Chief	Mike Crawford	Division	S	Linda Gibson	
Deputy Plans Section Chief	Debbie Plummer (T)	Division	Contingency / Roads	Jennifer Harris / Eric Metzger (T)	
Resource Unit	Gary Duranceau	Division	Staging	Noah Daniels	
Status Check-in	Katelyn Roeder/ Charlie Hardy	Division	Boat	Nate Crawford / Seth Ellis (T)	
Situation Unit	Shannon Theall / Ray Moeckel (T)	e. Air Operations Branch			
GIS Specialists	Aleksandar Dozic / Olivia Hughes (T)	AOB Director – Planning		Mark Hocken	
Demob Unit	Jay Lord	AOB Director – Field		Ted Hass	
Documentation Unit	Chris Oelschlager	HELCO ATGS		Jamie Lillenthal	
Incident Meteorologist	Todd Carter / Maddie Kristell (T)	10. Finance Section			
Fire Behavior Analyst	Steve Ziel / Michael Bowden	Finance Section Chief		Andrea Andresen / Lori Bailey (T)	
Strategic Operational Planner	Greg Funderburk	Time Unit		Beverly Hollars	
Air Resources Advisor	Dan Byrd	Procurement		Audrey Mainwaring	
8. Logistics Section		Comp/Claims		Kelly Lorenz (Virtual)	
Logistics Section Chief	Franklin Vaughan / Larry Falcon (T)	Cost Unit		Dede Domingos (Virtual)	
Deputy Logistics Section Chief	Max Yager (Stehekin) / Cindy Wedekind (Lucerne) / Kelsey Lipp	Prepared by Gary Duranceau, RESL			
Facilities	Jan Robbins / Peter Drott (T) / Tammy Swickey				
Base Camp Manager	Dave Lefevre				
Supply Unit	Vicki Cunningham				



Fire Weather Forecast



FORECAST NO: 25
PREDICTION FOR: 24 Hr Shift
SHIFT DATE: Sunday 7/7/2024
TIME AND DATE ISSUED: 7/6/2024 1900 hrs

INCIDENT: Pioneer Fire
SIGNED: *Madelyn Kristell*
 Incident Meteorologist Trainee (IMET)

Discussion:

*****Excessive Heat Warning has been issued by the NWS, Spokane effective through Friday*****

A significant heatwave is ongoing and will persist through the end of the week. Temperatures in the mid to upper 90s are forecast, with critically low relative humidity. Overnight temperatures are not cool enough to provide adequate relief from the heat of the day. A moderate surface inversion will trap smoke near the surface for reduced air quality and visibility until more mixing can occur later in the morning. Thermal belts are likely to be present on the mid to upper slopes of the fire area due to the inversion. Expect northwest flow in the morning today, transitioning to southeast in the afternoon.

WEATHER FORECAST FOR TODAY:

SKY/WEATHER: Sunny. Smoke in the morning and in valleys, mixing out in the afternoon.

MAX TEMPERATURE: 93 to 98 valleys/mid-slopes. 70 to 76 around 5000 feet.

MIN RH: 12 to 19 percent valleys/mid-slopes. 23 to 30 percent ridges.

20 FT WINDS:

Lower Valleys: Northwest flow in the morning, 3 to 6 mph, turning southeast after 1100 at 5 to 7 mph gusting to 15 mph.

Mid-slopes and Ridges: Northwest flow in the morning, 3 to 6 mph, turning SSW in the afternoon. 5 to 9 mph gusting to 15 mph.

HAINES INDEX: 5 High.

TRANSPORT WINDS: Southeast turning west at 10 mph.

INVERSION: Moderate inversion lifting by 1000. Mixing Height 9000 ft by 1400.

TONIGHT:

SKY/WEATHER: Mostly Clear. Smoke settling in valleys near Chelan and in drainages near the fire.

MIN TEMPERATURE: 66 to 72 valleys/mid-slopes. 57 to 60 around 5000 feet.

MAX RH: Poor Recovery. 30 to 35 percent valleys/mid-slopes. 35 to 45 percent ridges around 5000 feet.

20 FT WINDS:

Valleys/Lower Slopes: Northwest down lake 5 to 10 mph in the evening decreasing after 2200.

Mid-Slopes and Ridges: Northwest 8 to 10 mph in the evening.

INVERSION: Developing after 2100 hrs to near 1000 ft. Thermal belt activity likely at the top of the inversion.

MONDAY:

SKY/WEATHER: Sunny and hot.

MAX TEMPERATURE: 98 to 101 valleys/mid-slopes. 69 to 73 around 5000 feet.

MIN RH: 11 to 19 percent valleys/mid-slopes. 20 to 25 percent ridges.

20 FT WINDS:

Lower Valleys: Northwest before 1000 at 4 to 7 mph, turning SE 5 to 10 mph.

Mid-slopes and Ridges: Northwest before 1200 at 3 to 6 mph, turning SE 5 to 8 mph.

HAINES INDEX: 5 High.

TRANSPORT WINDS: SE turning NW 10 mph.

Boating concerns Sunday: Lighter downlake flow should reduce whitecaps and wind waves below 2ft.

Aviation concerns Sunday: Temperature near 20C at 4000 feet for load calcs. Thermal turbulence likely due to uneven heating of terrain and slopes.

Weather observations can be texted to 509-319-0474 or emailed to todd.carter@noaa.gov

Fire Behavior Forecast # 26

Name of Incident: Pioneer	Administrative Unit: SE Region DNR / Okanogan-Wenatchee NF
Date & Time Issued: July 7, 2024 @ 1900	Operational Period: DAY 07/07/2024
FBAN: Steve Ziel	Signed: /z/

Assumptions: *HOT & DRY conditions will provide all the ingredients for very active fire behavior today. Current fuel conditions will promote rapid fire spread with wind and slope alignment especially between 1200-2000. Fire spread rate is being dominated by fine dead fuels and cured grasses. Live fuels are not contributing to fire spread at this time. Lake effect winds (up/ down lake) dominate lower and mid slopes; the fire is on a dry S/SW aspect with steep side drainages that provide strong upslope winds. Wind/slope alignment and/or lake wind will influence fire spread rate and direction. Expect down lake winds, with gusts to 15 mph by 1600; and 15 mph gusts from SSW on ridgetops by late aftn..*

Weather Summary

*See attached Fire Weather Forecast

Fire Behavior Summary

Fuels in the fire area are composed of a mosaic of *Timber Litter, Grass, Timber with Understory, and Grass/Shrub* models. The fire is burning in the Rex Creek (2001) fire footprint. Primary tree species include mixed sizes and densities of Douglas Fir and Ponderosa Pine. Local timber litter is compact to fluffy. Brush and understory species include ceanothus, hardwoods, and dog-hair conifer reproduction. Large snags and heavy downed fuel loadings are common throughout all areas. Live woody and herbaceous fuels are seasonally moist, and not contributing to rates of spread; grasses are partially to fully cured depending on elevation and aspect. Fuel conditions change by aspect, previous fire history, and elevation. Most N and E aspects include 23-year old brush and conifer trees.

*Today's potential fire behavior includes areas of **fingered head fire runs, active flanking, and backing (with rollout) with wind/slope alignment.** Expect rapid fire spread in fine dead fuels. Heavy fuels are retaining heat serving as ignition sources in dry fine fuels. Early season fuel condition is inhibiting full fire behavior potential at higher elevations and north aspects, some grasses are still curing. Expect sustained very active fire behavior for next several days. Watchout for rapid slope reversal spread where it occurs. Expect lee-side spotting as fire reaches ridgelines (launch-pad).*

* **FFM= 2%-3%, 1000hr. moisture=11%, Woody fuels 160%, Probability of Ignition-80 -90%, Max Spotting 0.5 miles**

Fuel Type	Rate of Spread	Flame Length	Backing ROS	Spot Size in 2-hours
...If your work area includes -	(CH/HR = FPM)	Feet	FPM	Acres
GR2 - Moderate load grass/shrub	45 - 50	4 - 5	1-2	250
SH2 - Moderate load shrub	3 - 4	2	< 1	
TU5 - High load Timber w/ Understory	12 - 14	8- 9 (torching)	1	20
TL8 - Long needle timber litter	15 - 17	4- 6	1 +	30

Specific Assignments:

Div. A – Likely upslope short finger runs in draws, backing, with flanking in upper Meadow Cr.. Monitor downstream backing rate .

Shore Protection Group – Monitor up/down lake winds closely. Expect rapid spread in fine fuels when fire becomes active.

Other Br./Grp. – Should not be affected by fire activity during the burn period. Monitor smoke direction and amount. Assess fuels.

***IA** – Ensure good size-up before engaging. Assess fire spread potential based on fuel, weather, topography and values at risk.

Air Operations: Hot. Locally heavy downwind smoke in drainages and aloft. Complex terrain watch for lee-side turbulence.

Safety

Transition day.....short period to get up to speed. Review the Fire Orders and Watchout situations as they relate to the assignment...anticipate fire behavior and weather hazards, plan your actions in advance. Share and discuss the Fire Weather Forecast and Fire Behavior Forecast. LCES should be reviewed more frequently.....pull out the belt weather kit, post lookouts.....

Anticipate and be aware of changing conditions during the period – plan ahead, better to be out an hour early than a minute too late. Flare-ups lead to torching, which leads to spotting which result in more flare-ups.....think and plan ahead!!

*Today's Fire Behavior Forecast contains 685 words written for your situational awareness.

DIVISION ASSIGNMENT LIST				1. Branch I	2. Division / Group A		
3. Incident Name Pioneer				4. Operational Period Date: 07/07/2024 Time: 0700-2100			
5. Operations Personnel							
Operations Chief	Jon Larson / Jeff Bortner(T)			Division / Group Supervisor	Seth Missal / James Fields (T)		
Operations Chief (Plans)				Branch Director	Scott Ebel / Josh Verellen (T)		
Safety Officer	Matt Broyles / Eric Brown			Air Attack Supervisor	Jamie Lilienthal		
6. Resources Assigned this Period							
	Strike Team / Task Force / Resource Designator	Leader	Number Persons	Tentative Last Work Day	Drop Off Pt / Time	Pick Up Pt / Time	
1.	O-180 TFLD	Joe Landburg	1	7/10	DP-22 / Moore Point	DP-22 / Moore Point	
2.	O-266 TFLD (T)	Frank Bojorquez	1	7/12	DP-22 / Moore Point	DP-22 / Moore Point	
3.	<i>C-29 CRW1 BAKER RIVER IHC GARY CHICKS</i>		<i>29</i>	<i>7/11</i>			
4.	C-30 CRW1 Entiat IHC	John Wirth	23	7/19	DP-22 / Moore Point	DP-22 / Moore Point	
5.	C-28 CR2I CRD	Tyler Herdman	22	7/15	DP-22 / Moore Point	DP-22 / Moore Point	
6.							
7.	O-359 MEDIC 12	Ethan Biederman	1	7/16	DP-22 / Moore Point	DP-22 / Moore Point	
8.	O-310 EMT 5	Dave Repnik	1	7/14	DP-22 / Moore Point	DP-22 / Moore Point	
9.							
10.	O-175 SOFR	Melissa Moore	1	7/11	DP-22 / Moore Point	DP-22 / Moore Point	
11.	O-352 SOFC	Kris Croddy	1	7/16	Lucerne	Lucerne	
12.							
13.							
14.							
15.							
16.							
17.							
18.							
19.							
20.							
21.							
7. Control Operations Task: Contain fire spread to the northwest where terrain and fuels allow for highest probability of success. Assess fire perimeter progression to the north and west at higher elevations. Implement point protection efforts on federal & private infrastructure. Purpose: To slow fire progression, provide time for suppression tactics, and continue to prep around critical values. End state: Minimize fire impacts to critical values including private inholdings and Forest Service infrastructure.							
8. Special Instructions							
<ul style="list-style-type: none"> In large or long term spike camps use helicopters, boats, or pack stock to deliver portable backcountry latrines and remove human waste if necessary. If camp does not have adequate pack, boat, or air support for human waste management, establish community latrines well away from water sources and common areas. Use human waste bags, if necessary. Minimize ground disturbance on the Moore Point and Meadow Creek alluvial fans in order to protect sensitive resources. Hose used from Prince Creek to Moore Pt: contaminated with invasive plants. Do not reuse. Backhaul to Moore Pt DP22 and store in "infested hose" area at Moore Pt until decontaminated. ** Denotes available for Initial Attack 							
9. Division / Group Communication Summary							
Function	Frequency	System	Channel	Function	Frequency	System	Channel
Command Repeater	See Comm Plan			Command	See Comm. Plan		
TAC				Air To Ground	See Comm. Plan		
Prepared by (Resource Unit Leader): Gary Duranceau			Approved by (Planning Section Chief) Mike Crawford			Date 7/6/24	Time 1900

DIVISION ASSIGNMENT LIST		1. Branch I	2. Division / Group Shore Protection				
3. Incident Name Pioneer		4. Operational Period Date: 07/07/2024 Time: 0700-2100					
5. Operations Personnel							
Operations Chief	Jon Larson / Jeff Bortner (T)		Division / Group Supervisor	Travis Baker / Frank Heilman (T)			
Operations Chief (Plans)			Branch Director	Scott Ebel / Josh Verellen (T)			
Safety Officer	Matt Broyles / Eric Brown		Air Attack Supervisor	Jamie Lilienthal			
6. Resources Assigned this Period							
	Strike Team / Task Force / Resource Designator	Leader	Number Persons	Tentative Last Work Day	Drop Off Pt / Time	Pick Up Pt / Time	
1.	O-182 WFM1 Selway	Brian Peterson	13	7/8	DP-30	DP-30	
2.							
3.	C-29 CRW1 Baker River IHC	Gary Chicks	24	7/11	DP-36	DP-36	
4.	**C-19 CR2I Cle Elum RD	Cris Machado	16	7/8	Safety Harbor DP30	Safety Harbor DP30	
5.							
6.	A-78 UR-31	Marshal Wallace	4	7/9	Lucerne	Lucerne	
7.							
8.	O-307 MEDIC 8	Rick Kelly	1	7/11	Safety Harbor DP30	Safety Harbor DP30	
9.	O-309 MEDIC 9	Benjamin McCall	1	7/18	DP-30	DP-30	
10.							
11.	O-174.52 SOFR	George Libercajt	1	7/7	DP-27 / Lucerne	DP-27 / Lucerne	
12.							
13.							
14.							
15.							
16.							
17.							
18.							
19.							
20.							
21.							
22.	TBD:						
23.	(2) Fire Boat, (1) TFLD						
7. Control Operations Task: Protect Forest Service infrastructure and private property from Pioneer Creek to Mitchell Creek Purpose: To slow fire progression, provide time for suppression tactics, and continue to prep around critical values. End state: Minimize fire impacts to critical values including private inholdings and Forest Service infrastructure							
8. Special Instructions <ul style="list-style-type: none"> In large or long term spike camps use helicopters, boats, or pack stock to deliver portable backcountry latrines and remove human waste if necessary. If camp does not have adequate pack, boat, or air support for human waste management, establish community latrines well away from water sources and common areas. Use human waste bags, if necessary. Ensure hazard mitigations and IVI protocols are in place before taking action. Hose used from Prince Creek to Moore Pt: contaminated with invasive plants. Do not reuse. Backhaul to Moore Pt DP22 and store in "infested hose" area at Moore Pt until decontaminated. 							
9. Division / Group Communication Summary							
Function	Frequency	System	Channel	Function	Frequency	System	Channel
Command Repeater	See Comm Plan			Command	See Comm. Plan		
TAC				Air To Ground	See Comm. Plan		
Prepared by (Resource Unit Leader): Gary Duranceau			Approved by (Planning Section Chief): Mike Crawford		Date: 7/6/24	Time: 1900	

DIVISION ASSIGNMENT LIST			1. Branch II		2. Division / Group D		
3. Incident Name Pioneer			4. Operational Period Date: 07/07/2024 Time: 0700-2100				
5. Operations Personnel							
Operations Chief	Jon Larson / Jeff Bortner (T)		Division / Group Supervisor		Andrew Schaffran		
Operations Chief (Plans)			Branch Director		Scott Ebel / Josh Verellen (T)		
Safety Officer	Matt Broyles / Eric Brown		Air Attack Supervisor		Jamie Lilienthal		
6. Resources Assigned this Period							
	Strike Team / Task Force / Resource Designator	Leader	Number Persons	Tentative Last Work Day	Drop Off Pt / Time	Pick Up Pt / Time	
1.	O-276 HECM	Reynaldo Juban	1	7/12	Stehekin	Stehekin	
2.	O-277 HECM	Jason Evans	1	7/12	Stehekin	Stehekin	
3.							
4.	O-278 SMOD Crew 84	Geoff Hibbs	5	7/9	Stehekin	Stehekin	
5.	O-187 WFM1 Grass Lake	William Johnson	9	7/7	Stehekin	Stehekin	
6.	**O-218 WFM2 Olympic	Jonah Gray	10	7/9	Stehekin	Stehekin	
7.							
8.	O-167 ARCH	Jason Wright	1	7/12	Stehekin	Stehekin	
9.	O-370 ARCH (T)	Henry Eaton	1	7/18	Stehekin	Stehekin	
10.	O-372 READ	Jack Oelfke	1	7/19	Stehekin	Stehekin	
11.	O-237 REAF	Cade Simpson	1	7/7	Stehekin	Stehekin	
12.	O-371 REAF	Heather Rickleff	1	7/20	Stehekin	Stehekin	
13.	O-376 REAF	Roger Christophersen	1	7/18	Stehekin	Stehekin	
14.							
15.	O-165 REMS 2	Brayden Kirk	4	7/10	Stehekin	Stehekin	
16.	O-174:88 SOFR	Leo Engleson	1	7/7	Stehekin	Stehekin	
17.	O-353 SOFC	Phillip Bordelon	1	7/17	Stehekin	Stehekin	
18.	O-304 LTAN	Dan Ostmann	1	7/18	Stehekin	Stehekin	
19.							
20.	E-89 Driver	Phillip Bossen	1	7/14	Stehekin	Stehekin	
21.	TBD: (1)TFLD, (5)ENG5, (2)SMOD						
7. Control Operations Task: Continue construction of contingency lines around the community of Stehekin. Purpose: Minimize fire impacts to critical values including private inholdings, the community of Stehekin, and Forest Service infrastructure. End state: Critical values including private inholdings, the community of Stehekin, and Forest Service infrastructure are not impacted by the Pioneer fire, while minimizing fire impacts and acres burned utilizing historic wildfire control features and natural barriers.							
8. Special Instructions							
<ul style="list-style-type: none"> All operational personnel working on USFS lands will need to conduct a thorough inspection for invasive species seeds on boots including laces, clothing, and gear prior to entering NPS lands. Only fresh (direct from the cache) hose should be utilized on NPS lands to prevent the transport of invasive species seeds. Hose used on USFS lands should not be used on NPS lands and hose used on NPS lands should not be used on USFS lands to prevent the spread of invasives species seeds. Cargo loads being transported onto NPS lands should be inspected for invasive weed seed prior to flight. Ensure hazard mitigations and IWI protocols are in place before taking action. NPS Resource Avoidance Area Flagging is yellow with red polka dots. Contact NPS READs before working in areas where this flagging is present. ** Denotes available for Initial Attack 							
9. Division / Group Communication Summary							
Function	Frequency	System	Channel	Function	Frequency	System	Channel
Command Repeater	See Comm Plan			Command	See Comm. Plan		
TAC				Air To Ground	See Comm. Plan		
Prepared by (Resource Unit Leader): Gary Duranceau			Approved by (Planning Section Chief): Mike Crawford			Date: 7/6/24	Time: 1900

Dino's

DIVISION ASSIGNMENT LIST		1. Branch V	2. Division / Group S				
3. Incident Name Pioneer		4. Operational Period Date: 07/07/2024 Time: 0700-2100					
5. Operations Personnel							
Operations Chief	Jon Larson / Jeff Bortner (T)		Division / Group Supervisor	Linda Gibson			
Operations Chief (Plans)			Branch Director				
Safety Officer	Matt Broyles / Eric Brown		Air Attack Supervisor	Jamie Lilienthal			
6. Resources Assigned this Period							
	Strike Team / Task Force / Resource Designator	Leader	Number Persons	Tentative Last Work Day	Drop Off Pt / Time	Pick Up Pt / Time	
1.	O-179 TFLD	Charlie Humbert	1	7/9	Camp 4 Spike	Camp 4 Spike	
2.	**O-249 TFLD (T)	Mark Harper	1	7/9	ICP	ICP	
3.	O-243 HEQB	Everado Santillan	1	7/9	ICP	ICP	
4.							
5.	C-31 CRW1 La Grande IHC	Will Page	22	7/19	Camp 4 Spike	Camp 4 Spike	
6.	C-35 CRW1 Union IHC	Eric Jorgenson	22	7/20	MANSON	MANSON	
7.	C-36 CRW1 Zigzag IHC	Sandra Sperry	25	7/20	MANSON	MANSON	
8.	C-23 CR2I SRV1	Jaime Medrano	23	7/11	ICP	ICP	
9.	C-34 CR2I Wallowa	Kira Santulli	20	7/20	ICP	ICP	
10.							
11.	**E-191 ENG3 Rattlesnake Ridge	Brandon Marsh	3	7/15	ICP	ICP	
12.	**E-192 ENG5 WA-SES E4406	Seth Reynolds	4	7/15	ICP	ICP	
13.	**E-193 ENG5 WA-SES 4501	Connor Rupert	4	7/15	Camp 4 Spike	Camp 4 Spike	
14.							
15.	E-73 WTS1 Strand Tenders	Wade Strand	1	7/11	Camp 4 Spike	Camp 4 Spike	
16.	E-78 WTS2 King Hydroseeding	Don Warden	1	7/10	Camp 4 Spike	Camp 4 Spike	
17.							
18.	E-92 DZR3 Batchelor Excavation	Jay Batchelor	2	7/14	ICP	ICP	
19.	E-69 FTRA Morris Forestry	Rudy Morris	1	7/12			
20.							
21.	O-43 REMS1	Ray Storm	84	7/9	Camp 4 Spike	Camp 4 Spike	
22.	O-76 MEDIC 5	Brian Linacre	1	7/7	ICP	ICP	
23.	O-358 MEDIC 11	Savanah McLaughlin	1	7/16	Camp 4 Spike	Camp 4 Spike	
24.	O-345 SOF2	Todd Mott	1	7/14	Camp 4 Spike	Camp 4 Spike	
25.	E-18, E-93, E-94, E-148, E-149 UTV						
26.	TBD: (1)CR21, (1)DOZ5, (1)RKB2, (1)SKG2, (5)ENG6, (2)TFLD, (2)HEQB						
7. Control Operations							
Task: Identify and make necessary improvements to the control line and minimize impacts to the 8200 Road with road watering operations.							
Purpose: To establish a barrier to fire to the east of Safety Harbor Creek.							
End state: Control line anchored from South Navaree CG to Lake Chelan.							
8. Special Instructions							
<ul style="list-style-type: none"> Ensure hazard mitigations and IWI protocols are in place before taking action. ** Denotes available for Initial Attack 							
9. Division / Group Communication Summary							
Function	Frequency	System	Channel	Function	Frequency	System	Channel
Command Repeater	See Comm Plan			Command	See Comm. Plan		
TAC				Air To Ground	See Comm. Plan		
Prepared by (Resource Unit Leader): Gary Duranceau			Approved by (Planning Section Chief): Mike Crawford		Date 7/6/24	Time 1900	

DIVISION ASSIGNMENT LIST		1. Branch V		2. Division / Group Contingency/Roads		Page 1 of 2	
3. Incident Name Pioneer		4. Operational Period Date: 07/07/2024 Time: 0700-2100					
5. Operations Personnel							
Operations Chief		Jon Larson / Jeff Bortner (T)		Division / Group Supervisor		Jennifer Harris / Eric Metzger (T)	
Operations Chief (Plans)				Branch Director			
Safety Officer		Matt Broyles / Eric Brown		Air Attack Supervisor		Jamie Lilienthal	
6. Resources Assigned this Period							
	Strike Team / Task Force / Resource Designator	Leader	Number Persons	Tentative Last Work Day	Drop Off Pt / Time	Pick Up Pt / Time	
1.	**O-239 TFLD	Kory Garrie	1	7/9	ICP	ICP	
2.	O-241 TFLD	Jason Green	1	7/9	ICP	ICP	
3.	O-355 TFLD	Jason Conway	1	7/9	ICP	ICP	
4.	**O-257 TFLD (T)	Craig McDonald	1	7/9	ICP	ICP	
5.	O-333 HEQB	Jed Neumeier	1	7/16	ICP	ICP	
6.	O-127 FMOD Rainstorm	Kendall Cain	2	7/8	ICP	ICP	
7.	O-128 FMOD Rainstorm	Mike Lind	2	7/8	ICP	ICP	
8.	O-344 FELB	Jacob Harvey	1	7/15	ICP	ICP	
9.							
10.	C-32 CR2I Patrick	Garth Chambers	20	7/20	ICP	ICP	
11.							
12.	E-76 WTS2 Mountain View Wildfire	Wick Fife	1	7/17	ICP	ICP	
13.	E-83 WTS2 King Hydroseeding	Joe Ivie	1	7/11	ICP	ICP	
14.	E-157 WTS2 Pine Mountain Exc.	Bob Goss	1	7/8	ICP	ICP	
15.	E-172 WTS2 Upper Valley	Scott Young	1	7/16	ICP	ICP	
16.	E-173 WTS2 Ridgetop Iron	Tim Whitehurst	1	7/12	ICP	ICP	
17.							
18.	<i>E-69 FTRA Morris Firestorm</i>	<i>Rudy Morris</i>	<i>1</i>	<i>7/12</i>			
19.							
20.							
21.							
22.							
23.							
24.							
7. Control Operations <i>H-1 H-46</i> <i>Scout control line from Cooper ridge to LAKE CHELSEA</i> Task: Implement control lines from <i>H-1</i> to <i>DP76</i> . Continue road maintenance on 4330 and 4010. Scout additional control lines. Purpose: To protect critical values at risk. End state: To have established control lines in place that correspond to Pioneer Fire strategic plan.							
8. Special Instructions							
<ul style="list-style-type: none"> • Ensure hazard mitigations and IWI protocols are in place before taking action. • Contingency resources working DIV H: Do not draft from Gold Creek above DP-102 or from Black Canyon Creek. • Work with READS to maintain resource protection. • ** Denotes available for Initial Attack. 							
9. Division / Group Communication Summary							
Function	Frequency	System	Channel	Function	Frequency	System	Channel
Command Repeater	See Comm Plan			Command	See Comm. Plan		
TAC				Air To Ground	See Comm. Plan		
Prepared by (Resource Unit Leader): Gary Duranceau			Approved by (Planning Section Chief): Mike Crawford			Date 7/6/24	Time 1900

DIVISION ASSIGNMENT LIST		1. Branch V	2. Division / Group Contingency/Roads Page 2 of 2				
3. Incident Name Pioneer		4. Operational Period Date: 07/07/2024 Time: 0700-2100					
5. Operations Personnel							
Operations Chief	Jon Larson / Jeff Bortner (T)		Division / Group Supervisor	Jennifer Harris / Eric Metzger (T)			
Operations Chief (Plans)			Branch Director				
Safety Officer	Matt Broyles / Eric Brown		Air Attack Supervisor	Jamie Lilienthal			
6. Resources Assigned this Period							
Strike Team / Task Force / Resource Designator	Leader	Number Persons	Tentative Last Work Day	Drop Off Pt / Time	Pick Up Pt / Time		
25.	E-205 DOZ3 Douglas	Steve Douglas	1	7/20	ICP	ICP	
26.	E-103 MBM2 Marcon Timber	Mark Foresman	2	7/20	ICP	ICP	
27.	E-105 MBM2 Justin Pitts	Adam Bergstrom	2	7/15	ICP	ICP	
28.	E-151 MBM2 Dukes	Nik Marley	2	7/22	ICP	ICP	
29.	E-152 MBM2 Axsus	Easton Anderson	2	7/22	ICP	ICP	
30.	E-102 SKG2 Dukes Equipment	Justin Durston	2	7/15	ICP	ICP	
31.	E-154 SKG2 Western	Rick Lauman	2	7/8	ICP	ICP	
32.	E-155 SKG2 Mountain View	Bob Gibson	2	7/22	ICP	ICP	
33.							
34.	O-271 MEDIC 7	Steve Drab	1	7/7	ICP	ICP	
35.	O-383 MEDIC 13	Anthony Bylski	1	7/18	ICP	ICP	
36.	E-194 AMBO-2	Anna Reynolds	2	7/15	ICP	ICP	
37.							
38.	O-267 SOFR	Tom Talbot	1	7/10	ICP	ICP	
39.	O-346 SOFR	David Zuares	1	7/14	ICP	ICP	
40.							
41.	E-19, E-44 UTV						
42.							
43.							
44.							
45.							
46.	TBD:						
47.	(2)MBM2, (2)FMOD, (1)EXC2, (3)HEQB						
48.	(1)FELB, (2)DOZ2, (2)FEL2, (2)TFLD, (2) FMOD						
7. Control Operations <i>SCOUT CONT. LINE FROM COOPER RIDGE TO LAKE CHELAN</i> Task: Implement control lines from H41 to DP76. Continue road maintenance on 4330 and 4010. Scout additional control lines. Purpose: To protect critical values at risk. End state: To have established control lines in place that correspond to Pioneer Fire strategic plan.							
8. Special Instructions							
<ul style="list-style-type: none"> • Ensure hazard mitigations and IWI protocols are in place before taking action. • Contingency resources working DIV H: Do not draft from Gold Creek above DP-102 or from Black Canyon Creek. • Work with READS to maintain resource protection. • ** Denotes available for Initial Attack. 							
9. Division / Group Communication Summary							
Function	Frequency	System	Channel	Function	Frequency	System	Channel
Command Repeater	See Comm Plan			Command	See Comm. Plan		
TAC				Air To Ground	See Comm. Plan		
Prepared by (Resource Unit Leader): Gary Duranceau			Approved by (Planning Section Chief): Mike Crawford		Date	7/6/24	Time 1900

DIVISION ASSIGNMENT LIST		1. Branch V	2. Division / Group Staging				
3. Incident Name Pioneer		4. Operational Period Date: 07/07/2024 Time: 0700-2100					
5. Operations Personnel							
Operations Chief	Jon Larson / Jeff Bortner (T)		Division / Group Supervisor	Noah Daniels			
Operations Chief (Plans)			Branch Director				
Safety Officer	Matt Broyles / Eric Brown		Air Attack Supervisor	Jamie Lilienthal			
6. Resources Assigned this Period							
	Strike Team / Task Force / Resource Designator	Leader	Number Persons	Tentative Last Work Day	Drop Off Pt / Time	Pick Up Pt / Time	
1.	E-174 WTS2 Upper Valley	Keith Height	1	7/12	ICP	ICP	
2.	E-178 WTS2 Northern Construction	Richard Miller	1	7/12	ICP	ICP	
3.	E-179 WTS2 King Hydroseeding	Bill Black	1	7/21	ICP	ICP	
4.							
5.	E-208 SKGN 2 NW DIESEL DUES	REN Epper	2				
6.							
7.							
8.							
9.							
10.							
11.							
12.							
13.							
14.							
15.							
16.							
17.							
18.							
19.							
20.							
21.							
22.							
23.							
24.							
7. Control Operations Task: Remain ready and available for divisions as needed. Purpose: To assist divisions as needed to complete missions as appropriate. End state: Support suppression efforts as needed to project communities.							
8. Special Instructions							
9. Division / Group Communication Summary							
Function	Frequency	System	Channel	Function	Frequency	System	Channel
Command Repeater	See Comm Plan			Command	See Comm. Plan		
TAC				Air To Ground	See Comm. Plan		
Prepared by (Resource Unit Leader): Gary Duranceau			Approved by (Planning Section Chief) Mike Crawford			Date 7/6/24	Time 1900

DIVISION ASSIGNMENT LIST		1. Branch	2. Division / Group			
3. Incident Name Pioneer		4. Operational Period Date: 07/07/2024 Time: 0700-2100				Boat
5. Operations Personnel						
Operations Chief	Jon Larson / Jeff Bortner (T)		Division / Group Supervisor	Nate Crawford / Seth Ellis (T)		
Operations Chief (Plans)			Branch Director			
Safety Officer	Matt Broyles / Eric Brown		Air Attack Supervisor	Jamie Lilienthal		
6. Resources Assigned this Period						
	Strike Team / Task Force / Resource Designator	Leader	Number Persons	Tentative Last Work Day	Drop Off Pt / Time	Pick Up Pt / Time
1.	O-342 TFLD	Mike Hill	1	7/10	Lucerne	Lucerne
2.	O-248 TFLD (T)	Jason Ward	1	7/9	Lucerne	Lucerne
3.	O-263 TFLD (T)	Aaron Pedersen	1	7/12	ICP	ICP
4.	O-369 TFLD (T)	Katy Giddings	1	7/15	ICP	ICP
5.						
6.	O-331 HEQB	Brandon Reed	1	7/16	Lucerne	Lucerne
7.	O-332 HEQB	Eric Weinke	1	7/15	Lucerne	Lucerne
8.	O-354 HEQB	Logan Pike	1	7/16	Lucerne	Lucerne
9.	O-361 HEQB (T)	Thomas Dowdy	1	7/16	Lucerne	Lucerne
10.	O-368 HEQB (T)	Cole Bingham	1	7/16	Lucerne	Lucerne
11.						
12.	E-1 TBOT WA-NCP NPS	Sonja Shaw	1	*CWN	Stehekin	Stehekin
13.	E-3 TBOT Chelan Co. F&R#7	Brandon Asher	2	*O/S	Lucerne	Lucerne
14.	E-12 TBOT WA-OWF Chelan RD	Dick Gordon	1	*M-Sa	FS Dock	FS Dock
15.	E-43 TBOT Llama Boat	Gayle Thomas	1	*O/S	FS Dock	FS Dock
16.	E-91 TBOT DNR Mud Puppy	Ben Kilfoil	1	7/13	Lucerne	Lucerne
17.	E-120 TBOT Pilgram	Justin Gavin	1	7/11	FS Dock	FS Dock
18.	E-121 TBOT Brinnon Fire	Christopher Dolan	2	7/12	Lucerne	Lucerne
19.	E-98 TBOT Chelan County Sheriffs	Rich Magnussen	2	*O/S	FS Dock	FS Dock
20.						
21.	O-357 MEDIC 10	Sean Hendron	1	7/15	Lucerne	Lucerne
22.	O-308 EMT 4	Justin Dominguez	1	7/12	Lucerne	Lucerne
23.						
24.	TBD:					
25.	(3) TBOT					
7. Control Operations						
Task: Provide logistical needs for all fire activities on navigable waters.						
Purpose: Adequately support the needs of incident personnel in areas not accessible by roads.						
End state: Deliver supplies and personnel providing a timely, safe and effective operation.						
8. Special Instructions						
<ul style="list-style-type: none"> Follow instructions in IAP for requesting Ferry Tickets. All emergency medical requests for boats go through Pioneer Communications. * O/S – Operator Swaps As Needed, *CWN – Call When Needed, *M-Sa – Operator takes every Sunday off 						
9. Division / Group Communication Summary						
Function	Frequency	System	Channel	Function	Frequency	System
Command Repeater	See Comm Plan			Command	See Comm. Plan	
TAC				Air To Ground	See Comm. Plan	
Prepared by (Resource Unit Leader): Gary Duranceau			Approved by (Planning Section Chief): Mike Crawford		Date	Time
					7/6/24	1900

AIR OPERATIONS SUMMARY ICS-220

Incident Name / Number: Pioneer / WA-SES-000173
 Sunrise: 05:10, Sunset: 20:59, Airport: S10, Pumpkin: 21:28
 General Remarks, Safety Notes, Hazards, Air Operations Special Equipment, etc.:

*Order All Aircraft over Command to Helibase.
 *Sanitize Buckets before changing water sources.
 *Clear drop arealine before initiating drop sequence.
 *Be mindful of all overhead and environmental hazards while working with aircraft.
 *All GPS coordinates to be collected in Degrees, Decimal, and Minutes (DDMM)
 *** WINDS: return to helibase if winds become unmanageable.
 *Aviation daily cost to: 2024.pioneer.finance@firenet.gov
 *Aviation daily cost to: pioneerhelibase2024@gmail.com

Incident Frequencies	RX	Tone	TX	Tone	AM/FM
Air to Air Primary (A-8)	123.4000		123.4000		AM
Air to Air Secondary (A-9)	118.2750		118.2750		AM
A/G Pri Tactical (A-10)	169.1500		169.1500		FM
A/G Sec Operational (A-11)	168.4000		168.4000		FM
AG 3 (TOLC)	166.6125		166.6125		FM
DECK	163.1000		163.1000		FM
COMMAND					
					See ICS 205 Communications Plan
VMEID 29	155.3475	156.7	155.3475	156.7	FM
AIR GUARD	168.6250		168.6250	110.9	FM
National Flight Following	168.6500	110.9	168.6500	110.9	FM

HELICOPTERS - Assigned

FAA #	TYPE	Make/Model	Helibase	Start	Avail	Remarks
HB-16FH (A-22)	1	UH-60	Valley	0800	0900	BKT/LL
HB-161KA (A-24)	1	K-1200	Valley	0800	0900	BKT/LL
HB-344RA (A-45)	1	CH-47D	Valley	0800	0900	BKT/LL
H-527 (H-811KA) (A-94)	2	Bell 212HP	Chelan	0800	0900	BKT/LL/Pax
H-869H (A-98)	2	Bell 205 A1 ++	Chelan	0800	0900	BKT/LL/Pax
H-234BH (A-99)	3	AS-350B3	Chelan	0800	0900	Recon/BKT/Medical
H-544AS (A-60)	3	AS-350B3	Chelan	0800	0900	HLCO/Recon
H-407RL (A-1)	3	Bell 407HP	Chelan	0800	0900	Short Haul/Recon
H-125CL (A-91)	3	AS-350B3e	WEN	0800	0900	Short Haul/Recon

HELICOPTERS - GACC Prepo and Lend/Lease

FAA #	TYPE	Make/Model	Airport	Avail	Remarks
	2	Bell 205A	Chelan	0800	**Unavailable**

FIXED WING AA/HLCO

Call Sign	Type	Make/Model	Base	Start	Avail	Remarks
UMR-31	3	AtlasX	Lucerne	0600	2200	IR/PSD
UR-45 Baker River IHC	4	Anafi	DIV Z	0600	2200	IR
UMR-46 Entiat IHC	4	Anafi	DIV A	0600	2200	IR

Prepared By	Date Prepared	Operational Period - Date	Operational Period - Time	Equipment/SUPPLIES
Loco, Jay - ASGS(t) & Mark, Huber - AOB	7/6/2024	7/7/2024	0700-2100	Commo Trailer (Pioneer) E-20 Hand Wash Station (Pioneer) E-47 Water Tender (Pioneer) E-77 Water Tender (Pioneer) E-14 Commo Trailer (Valley) E-150 Water Tender (Valley) E-158
Medivac ship: N234BH, AS-350B3 Call Helibase to launch Medical onboard: EMT and Litter Kit Request Procedure for This Aircraft: Commo on Command, and A/G's Short-Haul Platform: MOCA N125CL, AS-350B3e Operational Hours: 0900 to 2100 Order through AOB/Helibase/CWICC HMGB: Teague Walsh-Felz, Cell: (608) 354-4762	7/6/2024	7/7/2024	0700-2100	Commo Trailer (Pioneer) E-20 Hand Wash Station (Pioneer) E-47 Water Tender (Pioneer) E-77 Water Tender (Pioneer) E-14 Commo Trailer (Valley) E-150 Water Tender (Valley) E-158

1. Incident Name:		2. Date/Time Prepared:		3. Operational Period:						
PIONEER		Date: 07/06/2024	Time: 1600	Date/Time From: 07/07/2024	0600	Date/Time To: 07/08/2024	0600			
4. Basic Radio Channel Use:										
Zone Group	Ch #	Function	Channel Name/Trunked Radio	Assignment	RX Freq	RX Tone/NAC	TX Freq	TX Tone/NAC	Mode (A,D, or M)	Remarks
	1	TACTICAL	TAC 1	DIV D & S	168.0500	123.0	168.0500	123.0	A	
	2	TACTICAL	TAC 2	DIV A	168.2000	123.0	168.2000	123.0	A	
	3	TACTICAL	TAC 3	Shore Protection	168.6000	123.0	168.6000	123.0	A	
	4	TACTICAL	TAC 4	DIV H / CONT	166.7250	123.0	166.7250	123.0	A	
	5	TACTICAL	TAC 5	ROADS	166.7750	123.0	166.7750	123.0	A	
	6	TACTICAL	TAC 6	BOAT	168.2500	123.0	168.2500	123.0	A	
	7	COMMAND	CMD 7	ALL	168.4750	123.0	165.4000	123.0	A	CHELAN BUTTE
	8	COMMAND	CMD 8	ALL	169.5375	123.0	164.7125	123.0	A	OLD MAID MT
	9	COMMAND	CMD 9	ALL	170.4500	123.0	168.1000	123.0	A	MOORE MT
	10	COMMAND	CMD 10	ALL	170.0125	123.0	165.2500	123.0	A	SLIDE RIDGE
	11	COMMAND	CMD 11	ALL	170.4125	123.0	165.9625	123.0	A	FOX PEAK
	12	TACTICAL	A/G PRI	ALL DIVS	169.1500	000.0	169.1500	000.0	A	
	13	AIR TO GROUND	A/G SEC	ALL DIVS	168.4000	000.0	168.4000	000.0	A	
	14	AIR TO GROUND	A/G 3	ALL DIVS	166.6125	000.0	166.6125	000.0	A	TAKE OFF LANDING CHANNEL
	15	AIR TO GROUND	VMED 29	ALL DIVS	155.3475	156.7	155.3475	156.7	A	AIR EMS COORDINATION
	16	AIR TO GROUND	AIRGUARD	ALL DIVS	168.6250	000.0	168.6250	110.9	A	EMERGENCY AIRCRAFT CONTACT
5. Special Instructions: 24 hour staffing: PIONEER COMMUNICATIONS PHONE NUMBER: (610) 217-6213 / CURRENT CLONE "PIE 6-21"										
6. Prepared By COM1				Name: SETH BAUMGARTEN				Signature: <i>Seth Baumgarten</i>		
ICS 205				IAP Page				Date/Time: 07/06/24 1600		

1. Incident Name:	2. Date/Time Prepared:	3. Operational Period:
PIONEER Branch IV & V	Date: 07/06/2024 Time: 1600	Date/Time From: 07/07/2024 0600 Date/Time To: 07/08/2024 0600

4. Basic Radio Channel Use:											
Zone Group	Ch #	Function	Channel Name/Trunked Radio	Assignment	RX Freq	RX Tone/NAC	TX Freq	TX Tone/NAC	Mode (A, D, or M)	Remarks	
	1	TACTICAL	TAC 1	DIV D & S	168.0500	123.0	168.0500	123.0	A		
	2	TACTICAL	TAC 2	DIV A	168.2000	123.0	168.2000	123.0	A		
	3	TACTICAL	TAC 3	Shore Protection	168.6000	123.0	168.6000	123.0	A		
	4	TACTICAL	TAC 4	DIV H / CONT	166.7250	123.0	166.7250	123.0	A		
	5	TACTICAL	TAC 5	ROADS	166.7750	123.0	166.7750	123.0	A		
	6	TACTICAL	TAC 6	BOAT	168.2500	123.0	168.2500	123.0	A		
	7	TACTICAL	A/G PRI	ALL DIVS	169.1500	000.0	169.1500	000.0	A		
	8	AIR TO GROUND	A/G SEC	ALL DIVS	168.4000	000.0	168.4000	000.0	A		
	9	AIR TO GROUND	A/G 3	ALL DIVS	166.6125	000.0	166.6125	000.0	A		
	10	COMMAND	CMD 10	ALL	170.0125	123.0	165.2500	123.0	A	SLIDE RIDGE	
	11	COMMAND	CMD 11	ALL	170.4125	123.0	165.9625	123.0	A	FOX PEAK	
	12	COMMAND	CMD 12	ALL	170.6875	123.0	166.5750	123.0	A	GOAT MOUNTAIN	
	13	LOCAL RPTR	GOAT	ALL	172.3500	146.2	165.0125	118.8	A	GOAT MOUNTAIN	
	14	LOCAL RPTR	MCLUR	ALL	172.3500	146.2	165.0125	103.5	A	McCLURE MTN	
	15	AIR TO GROUND	VMED 29	ALL DIVS	155.3475	156.7	155.3475	156.7	A	AIR EMS COORDINATION	
	16	AIR TO GROUND	AIRGUARD	ALL DIVS	168.6250	000.0	168.6250	110.9	A	EMERGENCY AIRCRAFT CONTACT	

5. Special Instructions: 24 hour staffing; PIONEER COMMUNICATIONS PHONE NUMBER: (610) 217-6213 / CURRENT CLONE "IV"

6. Prepared By COML	Name: SETH BAUMGARTEN	Signature: <i>Seth Baumgarten</i>
ICS 205	IAP Page	Date/Time: 7/6/24 1600

1. Incident Name:		2. Date/Time Prepared:		3. Operational Period:						
PIONEER IA N Chelan		Date: 07/06/2024 Time: 1600		Date/Time From: 07/07/2024	0600	Date/Time To: 07/08/2024 0600				
Zone Group	Ch #	Function	Channel Name/Trunked Radio	Assignment	RX Freq	RX Tone/NAC	TX Freq	TX Tone/NAC	Mode (A, D, or M)	Remarks
	1	LOCAL DISPATCH	Fire 1 Rp		154.4300	110.9	153.8900	D051	A	
	2	COMMAND	North Com Rp		155.3550	100.0	150.7900	100.0	A	
	3	TACTICAL	Goat Tac Rp		159.0675	110.9	153.8000	100.0	A	GOAT MNT
	4	TACTICAL	Orange		154.2650	107.2	154.2650	107.2	A	
	5	TACTICAL	Black		154.3400	151.4	154.3400	151.4	A	
	6	TACTICAL	DNR Common		151.4150	103.5	151.4150	103.5	A	
	7	LOCAL RPTR	DNR Chelan Rp		159.2250	156.7	151.4750	156.7	A	CHELAN BUTTE
	8	AIR TO GROUND	DNR A/G 1		159.2700	103.5	159.2700	103.5	A	
	9	LOCAL RPTR	Butte Tac Rp		155.1225	192.8	159.0675	162.2	A	CHELAN BUTTE
	10	TACTICAL	FS Win Tac		167.5500	000.0	167.5500	000.0	A	
	11	LOCAL RPTR	FS Goat Rp		169.8750	146.2	172.3500	118.8	A	GOAT MNT
	12	LOCAL RPTR	FS Slide Rp		173.0500	146.2	164.9125	141.3	A	SLIDE RIDGE
	13	AIR TO GROUND	FS A/G 40		167.4500	000.0	167.4500	000.0	A	
	14	TACTICAL	FS TAC		168.2000	000.0	168.2000	000.0	A	
	15	LOCAL RPTR	FS BADGER Rp		173.0500	146.2	164.9125	127.3	A	BADGER MNT
	16	TACTICAL	RED NET		153.8300	000.0	153.8300	000.0	A	
5. Special Instructions: 24 hour staffing: PIONEER COMMUNICATIONS PHONE NUMBER: (610) 217-6213 / CURRENT CLONE "IA N CHELAN"										
6. Prepared By COML				Name: SETH BAUMGARTEN				Signature: <i>Seth Baumgarten</i>		
ICS 205				IAP Page				Date/Time: 7/5/24 1600		

SAFETY MESSAGE

Pioneer Fire

July 7, 2024

Shift: Day

Safety Quote

"Success has many parents - Failure is an orphan"

~ Smart Person~

Driving

On the Pavement:

- Watch for traffic when entering/turning onto roadways. Check and double check.
- Drive at appropriate speeds, and keep at least 3 seconds behind vehicle in front of you.
- Be mindful of pedestrians in town and near recreation and residential areas along the lake.
- Weekend traffic in Chelan, Manson, and on 97 is heavy! Drive defensively.

On the dirt:

- Washboard sections may present challenges to directional control as well as braking efficiency.
- Much of the area we are operating in is still open to the public and they are not watching out for you. You need to watch out for them. Expect erratic maneuvers from them.
- Slow down. Time = distance = space. Space allows reaction time. Timely reaction allows space between you and the hazard. Space between you and the hazard = collision avoided. Expect on-coming traffic on curves.
- Dust creates visibility limitations. Do not stop in the middle of the road with a cloud of dust behind you. Following traffic may not see you stopped.
- There are roads with steep drop offs and soft shoulders on this fire. Be mindful of where you choose to put tires as you pass others on narrow sections.

"Make it a safe shift. "

Safety Officers: Matt Broyles, Eric Brown

Human Resources Message



THANK YOU

As you transition from the intensity of your fire assignment back to the comfort of your home, we want you to know how deeply grateful we are for your unwavering dedication and bravery. Your commitment to protecting lives and property in the face of danger is nothing short of inspiring.

We understand that the transition from the demanding environment of a fire assignment to the familiarity of home can be both physically and emotionally challenging. The shift from high-stress situations to the calm of everyday life can take time, and it's important to give yourself the space and grace to adjust.

Remember that you are not alone in this journey. Your colleagues, friends, and loved ones are here to support you. Don't hesitate to share your experiences and feelings with those who care about you. Communication can be incredibly healing, and by opening up, you allow others to understand your perspective.

Take the time to decompress and recharge. Engage in activities that bring you joy, help you relax, and reconnect you with the things you love outside of your firefighting duties. Whether it's spending time with family, enjoying hobbies, or simply taking a quiet moment for yourself, prioritize self-care.

If you find yourself grappling with any lingering emotions from your assignment, remember that seeking professional help is a sign of strength. There is no shame in reaching out to counselors or therapists who specialize in trauma and stress management. These experts can provide valuable tools to help you navigate your feelings and emotions.

Know that the impact of your service is immeasurable. You are heroes in every sense of the word, and your sacrifice does not go unnoticed. Your dedication and resilience make our communities safer, and we are incredibly proud of all that you do.

As you settle back into the rhythm of daily life at home, please accept our heartfelt gratitude and admiration. Your courage and sacrifice make a world of difference, and we are honored to stand by your side on this journey.

FINANCE MESSAGE

Finance Email: 2024.pioneer.finance@firenet.gov

Finance Phone: 484-501-1835

This incident requires electronic documentation. Please email your time to the address above. Scanned PDF's please, no .JPG's. Feel free to call finance for help if needed. Scanners are also available at ICP.

Required Documents

Overhead, Agency Crews & Cooperators	Contract Resources
Finance docs needed: Resource Order, Manifest, Cooperative Agreement, Casual Hire Form w/ECI# (as applicable)	Finance docs needed: Resource Order, Manifest, Full Contract/Agreement, Certifications (<i>if required</i>) Pre-Inspection
Daily: CTRs, Shift Tickets CTRs should be named as: CTR_RO#_YYMMDD-DD (Ex: CTR_O235_240605-07) Electronic CTR available! Use QR code on front cover	Daily: CTRs, Shift Tickets, receipts (claims, etc.) NOTE: Document travel times and odometer readings Shift Tickets should be named as: ST_RO#_YYMMDD-DD (Ex: ST_E5_240623-27) Electronic shift ticket available! Use QR code on front cover
Demob: Signed OF-288; Signed OF-286	Demob: Contractor Evaluations, Shift Tickets, receipt(s) for Addition/Deductions, Post-Inspection, Signed OF-286
<p>"H-Pay"- Entitlement to Hazardous Pay Differential (5 CFR 550.904) - Hazard pay MUST be supported by a justification. If justification is not provided, you chance losing your entitlement.</p>	<p>Please call finance regarding issues with your time:</p> <p>No one on List today, any questions for Finance, please email us. Thank You.</p>

Incident Name: **Pioneer**
 Incident Number: **WA-SES-000173**
 Financial codes:
 WA DNR – 221-LDW
 DOI – RZ79
 USDA – PNRZ79 (1522)

Please make sure you check in using QR code on the front of the IAP and then email your time daily.
THANK YOU!!

Resource Advice

Lead READ: Eireann Pederson 360-854-8197, eireann.pederson@usda.gov

REAF: Brigitte Ranne 509-663-6118, brigitte.ranne@usda.gov

REAF: Hector Rodriguez 509-393-5379, Hector.Rodriguez3@usda.gov

REAF: Carrissa Camenson 360-899-7147, carissa.camenson@usda.gov



Resource Guidelines

MIST for Spike Camp and Lucerne Forward Operating Base Management

- Employ minimum impact suppression tactics (MIST) where feasible, especially in remote or sensitive areas.
- If spike camps are necessary, use existing, or previously impacted campsites where available. If existing campsites are not available; use your local resource advisor to help identify the most resilient sites in rocky or sandy soils. Avoid camping in wet meadows, along streams, or on lake shores.
- Store food properly so that it is not accessible to wildlife. Consider hanging food in trees at least 15 feet off the ground and 5 feet from the trunk of the tree, or store food in sealable containers. Store food away from the campsite (300 feet is ideal) to reduce the risk of human and bear (and rodent!) conflicts.
- Do not let garbage and food scraps accumulate in camp. All garbage and food scraps need to be removed from the camp ASAP and before leaving the site.
- Minimize disturbance to land in preparing bedding and campfire sites. Do not clear vegetation, trench, or excavate a flat spot to create bedding sites.
- Do not use nails in trees. Don't construct camp furniture.
- If a campfire is built for warmth in the evening, build either a pit or mound fire. Use dead and down firewood. Use small diameter wood that burns down more cleanly. Don't burn plastics or aluminum - pack it out with the rest of the camp garbage.
- In small spike camp situations (not Lucerne), individuals should use the "cat-hole" method of disposing of human waste. Toilet seats should be located a minimum of 200 feet from water sources. Holes should be dug 6-8 inches deep.
- In large or long term spike the camps use helicopters, boats, or pack stock to deliver portable backcountry latrines and remove human waste if necessary. If the camp does not have adequate pack, boat, or air support for human waste management, establish community latrines well away from water sources and common areas. Use human waste bags, if necessary

Dipping and Drafting

- No cross-dipping between water bodies. All buckets or snorkels should be cleaned, inspected, and dried in the sun if they must be used between lakes. Dipping in small lakes must be pre-approved by the READ or AA.
- When drafting, use already disturbed areas for stream access (road crossings, dispersed campsites) to reduce the need for riparian vegetation clearing.
- Use screens (3/32" inch) for all pumping operations.
- Use containment pads and basins under pumps and fuel cans. Ensure a spill kit is present with every operating pump.

Invasive Species

- The fire is burning within an infestation of common crupina, a WA State Class A Noxious weed. Prevent spread of crupina off site – plan to wash hose and other equipment. Request fire fighters brush boots before boarding boat or before entering National Park Service Land.
- Inspect slings and remove all plant/soil material prior to use.
- Ensure all camps, staging areas, helispots and cargo areas are free of invasive plants to prevent spread to un-infested areas.
- Weed wash all vehicles, including boats, when they arrive to the incident and when demobed.

Fisheries /Aquatic Recommendations

- If trees must be felled in riparian areas for suppression or safety reasons, fell them toward streams where possible and minimize bucking where possible.
- Non-mechanized suppression activities are recommended within Riparian Reserves (150-300 ft from stream channel). For example, consider hand lines instead of dozer lines when feasible.

Retardant Use

- Retardant avoidance areas are present in the fire suppression area for both aquatic and terrestrial species.
- Track all retardant drops – locations and amounts.
- Report all mis-applications ASAP to READ. Monitoring and reporting of misapplications is required.

Wet Meadows

- No line or other disturbance in wet meadows in the Summer Blossom area (east of South Navarre campground above and below the 8200 road) and at Coyote and Poison Springs at the headwaters of their respective creeks.

Dry Meadows

- Minimize disturbance from staging and parking areas in dry meadows. These areas recovery slowly and are vulnerable to invasive plant infestation.

White Bark Pine

- Avoid cutting white bark pine whenever possible. Needles of 5 keep it alive! Ask READ for help with ID.

Burnout operations

- Plan to protect whitebark pine of all ages and mature cold and moist forest during burnouts. READ consultation and line officer approval is required for burn plans that include these forest types.
- During burnouts modify firing to retain large trees, large snags and large down wood in forests whenever possible.
- Minimize total acres burned in burnouts.
- Incorporate typical resource protection measures used in RX burning whenever it is safe and practical to do so (such as retention of green islands in moist areas).
- Provide a map of areas that were burned as part of the burnout operation (for use in emergency consultation).
- If cultural resources are discovered during suppression activities, leave on site and notify READ.

LOGISTICS NOTES

Pioneer Fire ICP

Breakfast 0530 – 0900
Lunch @ Refer Trailer – 0500 - 2100
Dinner 1800 -2100
Shower 0500 – 1200 & 1400 – 2200
Supply 0600 – 2200
Ground Support 0700 – 2100
Fuel Tender 0700 – 2100
Weed Wash 0700 – 1400 & 1600 – 2000

FOB Lucerne

Breakfast 0600 - 0900
Lunch – Pickup with Breakfast
Dinner 2030 – 2130
Shower 0500 – 1200 & 1400 – 2200
Supply 0600 – 2200

Ground Support Contact Numbers:

Casey Glade 435-704-4702 Joe Keady 541-733-6701

Ordering Information

Submit all orders on General Message Form 213 to the following email address.

2024.pioneer.ordering@firenet.gov

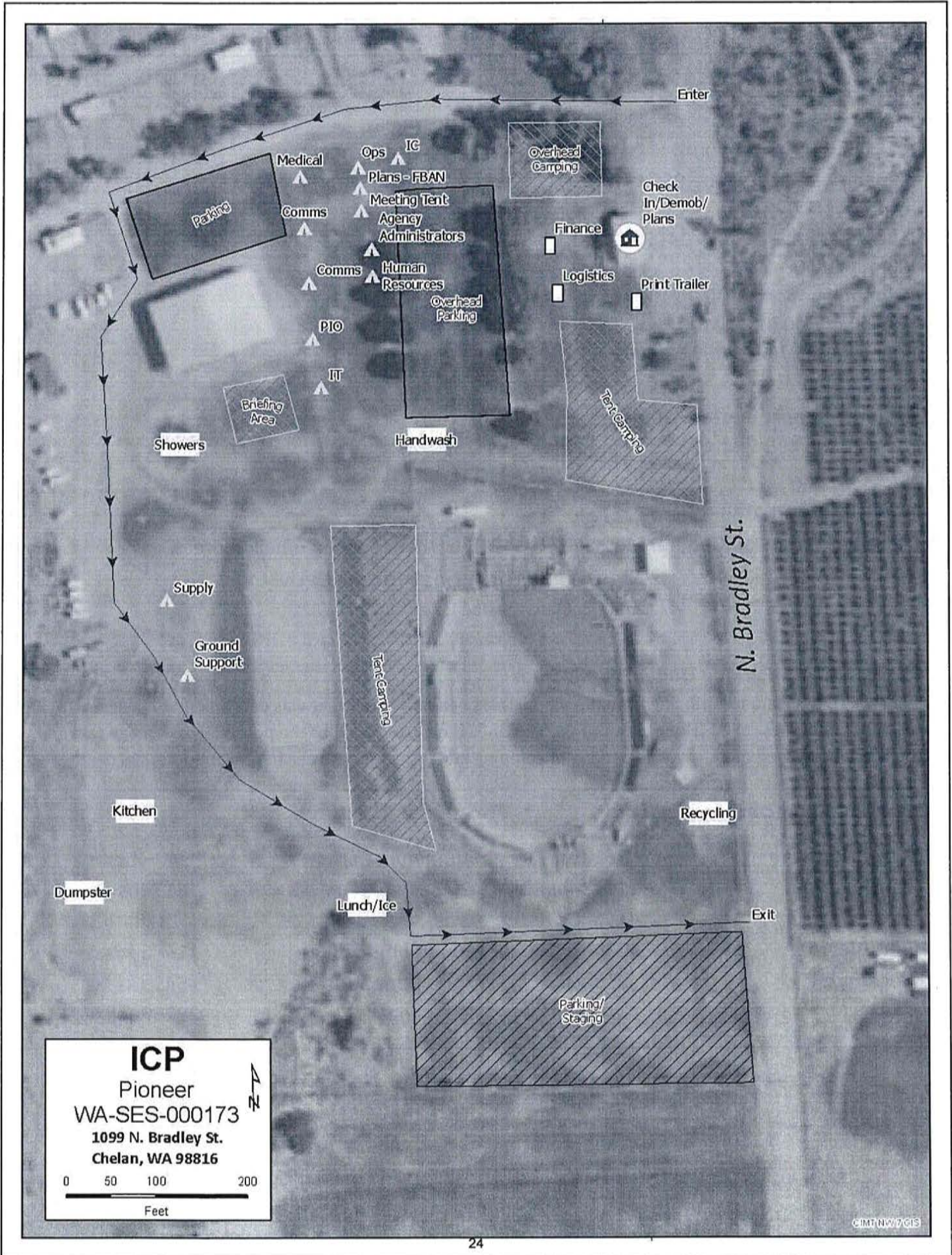
Ordering Manager Noe Reyes 484-501-1821

ICP Camping & Parking Under Maple Trees

The sticky oily substance dripping from the maple trees next to Main Street was determined to be insect residue, sometimes called "Honeydew". This substance is nontoxic and has the potential to damage cars and tents if not removed quickly. Avoid parking or camping under the maple trees to prevent potential damage.

Recycling Scorecard on Incident

Plastic Bottles	861-lbs	Aluminum Cans	248-lbs
Cardboard	11928-lbs	Office Paper	817-lbs
Plastics 1 & 2	153-lbs	Glass	13-lbs
Batteries	280-lbs	Food Composting	11386-lbs
Cooking Oil	253-gal	Food Donations	549-lbs
Trash	23790-lbs	Recycling	28259-lbs



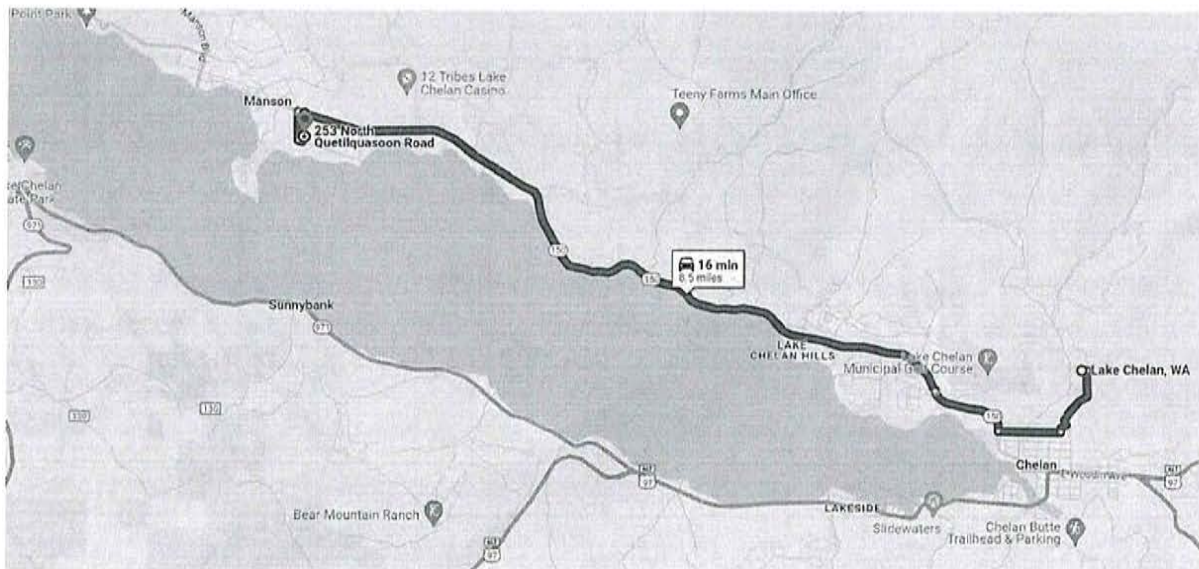
ICP
 Pioneer
 WA-SES-000173
 1099 N. Bradley St.
 Chelan, WA 98816

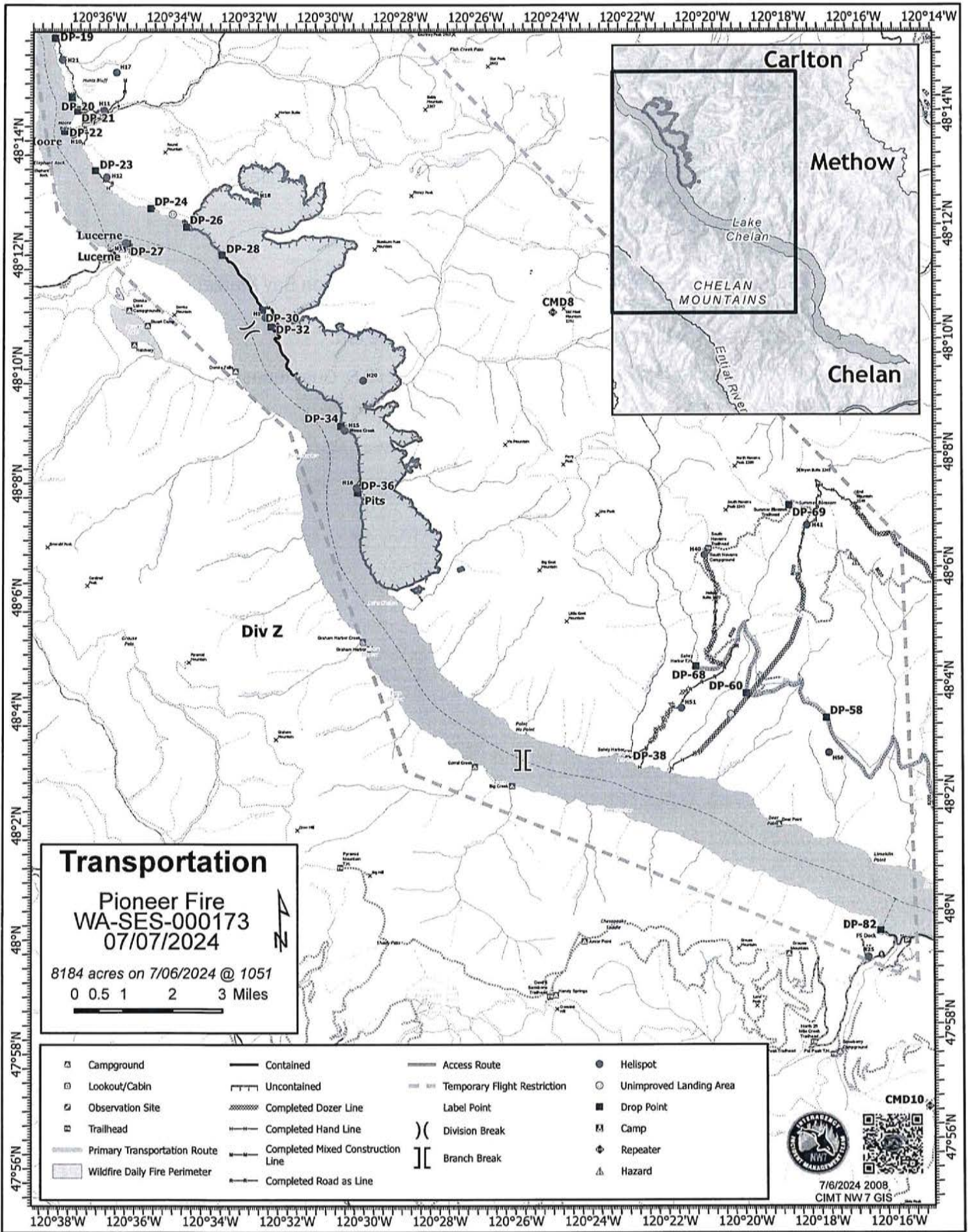
0 50 100 200
 Feet

Driving Directions from Chelan Rodeo Grounds to Manson FOB

- Head south toward Chelan on N Bradley St from ICP for .6 miles
- Turn Right onto E. Gibson Road – travel for .5 miles
- Turn Right onto WA-150/W Manson Road toward Manson
- Continue on WA-150 for approximately 6 miles
- Turn left onto S Quetilquasoon Road – Just past Manson Bay Market and Gas Station (on the left)
- Manson FOB will be approximately 1 block on the left.

Manson FOB is located in a vacant field just north of 253 S. Quetilquasoon Road.





Transportation
Pioneer Fire
WA-SES-000173
07/07/2024

8184 acres on 7/06/2024 @ 1051

0 0.5 1 2 3 Miles

CMD10

7/6/2024 2008
 CIMT NW 7 GIS

SHORT-HAUL OPERATIONS

CAPABILITIES

- During an operational Short-Haul the helicopter is capable of inserting Short-Haulers into an area with tight canopy cover and/or technical terrain.
- Haul line lengths range from 100 feet to 350 feet.
- Short hauler and/or medical gear can be delivered to the medical scene even if extraction by short-haul is not necessary.

ORDERING

- EMT or Medical Incident IC determines medical extraction is required.
- Follow local established procedures and/or Medical Incident Report (MIR) in the IRPG.
- Confirm aircraft type, call sign, estimated time of arrival and frequency.
- Give site selection information when ordering: hazards (i.e. ash, smoke, snags, aerial), tree height, terrain, and patient transport configuration (supine or seated position). Repeat hazards and give updated weather conditions as well as brief patient update to responding helicopter.

PROCESS: The helicopter will fly to the coordinates provided. They will make contact with ground personnel on scene with the patient using an identified air-to-ground frequency. The helicopter will complete a short-haul recon and size up, gather patient update information and then fly to a landing zone (LZ) to configure for short-haul operations. The helicopter will be monitoring the appropriate air-to-ground, air guard and victor frequencies. From this point, ground resources should only contact the helicopter in case of an emergency. During the insertion and extraction process ground personnel must be clear of the area.

ON SCENE – EXPECT THE FOLLOWING

- 1 or 2 rescuers (at least one qualified as an EMT or higher)
- Backboard (if needed and not already on scene)
- All equipment necessary for patient extraction

The Patient Extraction Bag accommodates most backboards.

- A patient on a backboard, TRS, SKED or litter will be inserted into the



The Seat Harness is used for patients not requiring the use of a backboard.





Team 7 Line Supply Order		Order #			
Date & Time	Delivery To Location/Time	Delivery Method			
Order Placed	(Division, Drop Point, Heli Spot, Lat/Long)	(Driver, Heli, DWS to P/U)			
Order received in Communications (name & time)					
Ordered by (name and Position)					
Ground Contact					
Contact Freq.					
Order received in Supply by (name & time)					
Special Instructions/line length/ elevation					
Order received in Transportation by (name & time)					
Order received in Helibase by (name & time)					
Order shipped to line by (name & time)					
#	Item	Amount	#	Item	Amount
1	Meals #1842	MRE 12/Cs	33	Bath in a Bag, Large #0712	
2	Water #0048	5 gal cubies	34	Bath in a Bag, Small #0206	
3	Gatorade	24/Cs	35	Coffee Kit #0480	
4	Batteries, AA #0030	24/pg	36	Coffee 3lb Can	
5	Batteries, AAA #7471	24/pg	37	Folda-Tank 1500 gal #0664	
6	Gas Unleaded	5 gal	38	Pumpkin 3000 gal. #0568	
7	2 Cycle Oil #7724	5 gal mix	39	Backpack Pump #0909	
8	2 cycle Oil #3444	1 Gal mix	40	Mark III pump + Kit #0148	
9	Diesel	5 gal	41	Lightweight Pump + Kit #8606	
10	Bar Oil #1880	1 Gal	42	Volume Pump #1222	
11	Bar Oil #1869	1 Qt	43	Hose 1 1/2" #1239 100' lg	
12	Shovel #0171		44	Hose 1" #1238 100' lg	
13	Pulaski #0146		45	Hose 3/4" #1016 50' lg	
14	Mcleod #0296		46	Reducer 1 1/2" to 1" #0010	
15	Combi #1180		47	Reducer 1" to 3/4" #0733	
16	Chainsaw Kit #0340		48	Gated "Y" 1 1/2" #0231	
17	Drip Torch Empty #0241		49	Gated "Y" 1" #0259	
18	Fussee #0105		50	Gated "Y" 3/4" #0904	
19	Sleeping Pad #1566		51	In-line Tee 1 1/2" to 1" #0230	
20	Sleeping Bag #0022		52	Nozzle KK 1 1/2" #1082	
21	Fly Tent #0070		53	Nozzle KK 1" #1081	
22	Plastic Sheeting #0143		54	Nozzle 3/4" #0136	
23	Parachute Cord #0533		55	Nozzle, Forester 1" #0024	
24	Fiber Tape #0222		56	Sprinkler kit #1048	
25	Garbage Bags #0021		57		
26	Leadline 3000 lbs #0528		58		
27	Cargo Net 3000lb #0531		59	Team 7 Hose Lay Kit	
28	Swivel 3000lb #0526		60		
29	Slingable Bg 72 Gal Blivet #0426		61		
30	Foam 5 gal. #1145		62		
31	Toilet Paper #0142		63		
32			64		

Team 7 Hose Lay Kit		
Item	Amount	
1 1/2 in. synthetic hose	1000 ft.	
1 in. synthetic hose	500 ft.	
3/4 in. garden hose	500 ft.	
1 1/2 in. gated wye	5 ea.	
1 1/2 in. - 1 in. reducer	5 ea.	
1 in. combination nozzle	5 ea.	
1 in. - 3/4 in. reducer	5 ea.	
3/4 in. valve, shutoff, ball	5 ea.	
3/4 in. nozzle	5 ea.	
3/4 in. gated wye	5 ea.	

SPRINKLER KIT NFES # 1048		
Item	Amount	
Sprinkler head w/ couplings	4 ea.	
3/4 in. garden hose	250 ft.	
1 1/2 x 1 1/2 x 1 tee	4 ea.	
1 x 3/4 reducer	4 ea.	
1 1/2 in. - 1 in. reducer	1 ea.	
3/4 in. gated wye	2 ea.	
3/4 in. valve, shutoff, ball	4 ea.	
3/4 in. nozzle	1 ea.	
3/4 in. pressure regulator	4 ea.	
3/4 in. nozzle, plastic 60 GPM	1 ea.	
10 in. adjustable wrench	1 ea.	

LINE ORDER PROCESS

Line orders from the field should go through the Communication Unit via radio (primary) or 24-hour phone number shown on the cover of the IAP. All other supply requests should be submitted in person to the Supply Unit.

Check In Message

- Please complete the virtual check-in process via the QR code on the front cover.
- You are not checked in until you provide the following:
 - 1) Red Cards
 - 2) Roster/Manifest
- Please email documents to: 2024.pioneer.checkin@firenet.gov

Any Questions:

Phone: 509-661-5372

Email: 2024.pioneer.checkin@firenet.gov

Demob Message

- Fliers complete the "Air Travel Request" via the QR code on the front cover 72 hours prior to flight date.
- Return supplies to the Cache.
- Return radios, antennas, etc., to Communications.
- All contract equipment and vehicles driven in fire area will need to do weed wash.
- Contact Finance about closing out your paperwork.
- Once the above items have been completed, SCAN the QR code on the front cover and complete the demob questions.

Any Questions:

Phone: 509-661-5376

Email: 2024.pioneer.demob@firenet.gov



Last Work Day & Demob Report

Incident: PIONEER US-WA-SES-000173

DEMOB: 07/07

CREWS

CR2I C-18 CR2I - NW - COLVILLE NF - MOB 3

EQUIPMENT

HOSU E-20 HOSU - WESTERN WILDFIRE LLC - 206512

OVERHEAD

ARCH O-168 WINGATE, ERNEST
FELB O-184 COZART, MARTIN JOHN
FMOD O-185 FMOD - FALLER MODULE - BROTHERS FIRE LLC - MOD 01 -
HEQB O-242 PARKER, TRAVIS
HEQB O-330 RAY, ASA WILLIAM
HEQB O-337 HUMPHERYS, BRANDON LEE
OPBD O-233 GOLDMAN, ROGER HAROLD
PIO1 O-105 JOHNSON, J MICHAEL
REAF O-166 SPAAK, JORDAN LEE
TFLD O-183 HAMMAN, HARLEY
WFM2 O-218 WFM2 - OLYMPIC WFM

LWD 07/07 ~ DEMOB on 07/08

EQUIPMENT

FTRA E-69 MORRIS FORESTRY LLC
OFFT E-146 OFFT - SNOHOMISH FD 26 - CV54 - ICP TRAILER
SKG2 E-155 SKG2 - KELSI N BEAMAN - 558143
STK1 E-96 STK1 - BOBS WELDING & AUTO REPAIR INC - D39557
WTS2 E-157 WTS2 - BRULAND, DUANE R - 830893

OVERHEAD

ABRO O-230 PFLUGH, KRISTOPHER MATTHEW
ABRO O-231 NOBLE, BENJAMIN DANIEL
COMT O-225 JUDD, KEVIN A
EMPF O-76 LINACRE, BRIAN SCOTT
EQTR O-269 KNIGHT, CHASE
FMOD O-127 FMOD - FALLER MODULE - DAVID RAINS - -FM-01 - CWC-
FMOD O-128 FMOD - FALLER MODULE - DAVID RAINS - -FM-02 - CWC-
REAF O-235 SIMPSON, CADE RYAN
WFM1 O-187 WFM1 - GRASS LAKE WFM

LWD: 07/08 ~ DEMOB: 07/09

CREWS

CR2I C-19 CR2I - OWF CLE ELUM

EQUIPMENT

GWT2 E-95 GWT2 - W W PUMPING SERVICE - 128831
HND1 E-9 HND1 - THE GENERAL CONTRACTOR, LLC - 522436
HND1 E-48 HND1 - PREMIER SERVICES & EQUIPMENT LLC - 083836
MBM2 E-151 MBM2 - DUKES EQUIPMENT & PARTS LLC - S00167
POT2 E-7 POT2 - TRYWAYS INC - 956202
SKG2 E-154 SKG2 - LAUMAN, RICK S - CE4172
STK2 E-15 STK2 - SPARTAN RESPONSE TEAM LLC. - D58579
STMH E-58 STMH - WELLER - B62115
WTS3 E-14 WTS3 - ARTILLERY CONCEPTS LLC - 007545

OVERHEAD

EMPF O-136 MEDINA, STEVE FRED
HEBM O-236 MCLANDRESS, RANDY
HEQB O-243 SANTILLAN, EVERARDO
HMGB O-232 FRIOLI, JOANN
RADO O-216 DE LEON JR, ERNESTO HENRY
RCDM O-222 RICHARDS, DAVID DANIEL
SEC2 O-96 HITT, WILLIAM EUGENE
THSP O-347 BYRD, DANIEL HOWARD
WFM1 O-182 WFM1 - MODULE - WILDLAND FIRE - T1- USFS - SELWAY

1. Incident/Project Name			2. Operational Period				
Pioneer Fire			Date/Time: 07/07/24 0700-2100				
3. Ambulance Services							
Name	Complete Address	Phone	Advanced Life Support (ALS) Yes No				
Lake Chelan EMS	Chelan, WA	911	X				
Douglas/Okanagan County Fire	Brewster, WA	911	X				
Aero Methow EMS	Twisp, WA	911	X				
4. Air Ambulance Services							
Name	Phone/Channel	Frequency, Type of Aircraft & Capability					
Life Flight - Brewster	1-800-232-0911 911	VMED 29, Rotor, ALS, 24 hr					
Airlift NW - Wenatchee	1-800-426-2430 911	VMED 29, Rotor, ALS, 24 hr					
Medivac Ship	Command 7,8,9,10,11,12 (Linked)	VMED 29, Rotor, BLS, Daytime					
Wenatchee Short Haul - Chelan Airport	Command 7,8,9,10,11,12 (Linked)	VMED 29, Rotor, BLS, Daytime, Short Haul					
Mount Rainer Short Haul	Command 7,8,9,10,11,12 (Linked)	VMED 29, Rotor, BLS, Daytime, Short Haul					
Snohawk 10 - Snohomish	1-800-258-5990 911	VMED 29, Rotor, ALS, Daytime, Hoist					
Spokane County Hoist - Spokane	1-509-532-8930 911	VMED 29, Rotor, ALS, 24 hr, Hoist Daytime Only					
5. Hospitals							
Name	Degrees Decimal Minutes	Travel Time From Fire		Phone	Helipad	Level of Care	
Lake Chelan Health 110 S. Apple Blossom Drive Chelan WA	Lat: 47° 50' 20 N	30 Min	3 Hr	509-683-2474	X	Level IV Trauma	
	Long: 119° 59' 20 W						
Central Washington Hospital (Confluence Health Central Campus) 1201 S. Miller Wenatchee WA	Lat: 47° 24. 43 N	1 Hr	4 Hr	509-433-3115	X	Level III Trauma	
	Long: 120° 19. 28 W						
Harborview Medical Center 325 9 th Ave Seattle WA	Lat: 47° 36. 24 N	1.5 Hr	6 Hr	206-744-4025	X	Level I Trauma Burn Center	
	Long: 122° 19. 45 W						
ICP	EMS Responders & Capability:		Mariann Turley Cass Monroe		MEDL/AEMT MEDL(T)/EMTF	509-496-9370 509-724-0843	
	Equipment Available on Scene:		ALS Kit, AED, O2, OTC meds				
	Medical Emergency Channel:		Command 7, 8, 9, 10, 11 (Linked)				
	ETA for Ambulance to Scene:						
	Air:		NA				
	Ground:		15 Min				
	Approved Heli-Spot:		NA				
	Lat:		NA				
	Long:		NA				
	LUCERNE FOB	EMS Responders & Capability:		Londa Van Kirk MEDL/EMTF (Lucerne FOB) MEDIC 6 Steve Medina (Air Medical) EMT 4 Justin Dominguez (Boat Medical) MEDIC 10 Sean Hendron (Boat Medical)		360-815-7645 360-556-9568 509-741-0611 443-851-2014	
Equipment Available on Scene:		ALS Kit, AED, O2, OTC meds					
Medical Emergency Channel:		Command 7, 8, 9, 10, 11 (Linked)					
ETA for Ambulance to Scene:							
Air:		2 hr					
Water/Ground:		3 hr					
Approved Heli-Spot:							
Lat:		H5 48° 12.1624' N					
Long:		120° 35.4476' W					
BRANCH I		EMS Responders & Capability:		MEDIC 8 Rick Kelly (Shore Protection) MEDIC 9 Benjamin McCall (Shore Protection) EMT 5 Dave Repnik (DIV A) MEDIC 12 Ethan Biederman (DIV A)		509-290-3922 360-420-6492 509-881-4771 513-882-2837	
	Equipment Available on Scene:		ALS Kit, Monitor/Defib, O2				
	Medical Emergency Channel:		Command 7, 8, 9,10, 11 (Linked)				
	ETA for Ambulance to Scene:						
	Air:		2 hr				
	Water/Ground:		3 hr				
	Approved Heli-Spots:						
	H1 48° 10.813' N		H11 48° 14.492' N		H15 48° 08.754' N		
	120° 31.925' W		120° 35.922' W		120° 29.813' W		
	H10 48° 14.099' N		H12 48° 13.381' N		H16 48° 07.744' N		
120° 36.782'W		120° 35.919' W		120° 29.541' W			
Lat:		NA					
Long:		NA					

BRANCH II	EMS Responders & Capability:	REMS 2 Brayden Kirk + 3 (DIV D) 509-264-8203 Jed Getman MEDL(T)/AEMF (Stehekin FOB) 541-391-3243
	Equipment Available on Scene:	ALS Kit, Monitor/Defib, O2, Rescue Gear
	Medical Emergency Channel:	Command 7, 8, 9, 10, 11 (Linked)
	ETA for Ambulance to Scene:	
	Air:	2 hr
	Ground:	3 hr
	Approved Heli-Spot:	
	Lat:	H14 48° 20.760' N
	Long:	120° 43.242' W
	BRANCH IV	EMS Responders & Capability:
Equipment Available on Scene:		
Medical Emergency Channel:		Command 7, 8, 9, 10, 11,12 (Linked)
ETA for Ambulance to Scene:		
Air:		2 hr
Ground:		3 hr
Approved Heli-Spot:		NA
Lat:		NA
Long:	NA	
BRANCH V	EMS Responders & Capability:	MEDIC 7 Steve Drab (CONTINGENCY) 406-600-2059 AMBO 2 Anna Reynolds (CONTINGENCY) 509-768-5519 MEDIC 13 Anthony Bylski (CONTINGENCY) 248-752-5511 MEDIC 11 Savannah McLaughlin (DIV S) 435-590-4952 REMS 1 Ray Storm + 4 (DIV S) 415 637-0491 MEDIC 5 Brian Linacre (DIV S) 301-781-7990
	Equipment Available on Scene:	ALS Kit, Monitor/Defib, O2, Rescue Gear
	Medical Emergency Channel:	Command 7, 8, 9, 10, 11, 12 (Linked)
	ETA for Ambulance to Scene:	
	Air:	2 hr
	Ground:	3 hr
	Approved Heli-Spot:	
	Lat:	H25 47° 59.200' N
	Long:	120° 16. 521' W
	TBD	EMS Responders & Capability:
Equipment Available on Scene:		
Medical Emergency Channel:		Command 7,8,9,10,11 (Linked)
ETA for Ambulance to Scene:		
Air:		
Ground:		
Approved Heli-Spot:		NA
Lat:		NA
Long:	NA	
TBD	EMS Responders & Capability:	TBD
	Equipment Available on Scene:	
	Medical Emergency Channel:	Command 7,8,9,10,11 (Linked)
	ETA for Ambulance to Scene:	
	Air:	
	Ground:	
	Approved Heli-Spot:	NA
	Lat:	NA
Long:	NA	

Prepared By (Medical Unit Leader)	Date	Reviewed By (Safety Officer)	Date
Cass Monroe MEDLt	07/06/24	Matt Broyles SOFC	07/06/24
Signature: <i>Cass Monroe</i>		Signature: <i>Matt Broyles</i>	

Medical Incident Report

FOR A NON-EMERGENCY INCIDENT, WORK THROUGH CHAIN OF COMMAND TO REPORT AND TRANSPORT INJURED PERSONNEL AS NECESSARY.

FOR A MEDICAL EMERGENCY: IDENTIFY ON SCENE INCIDENT COMMANDER BY NAME AND POSITION AND ANNOUNCE "MEDICAL EMERGENCY" TO INITIATE RESPONSE FROM IMT COMMUNICATIONS/DISPATCH.

Use the following items to communicate situation to communications/dispatch.

1. CONTACT COMMUNICATIONS / DISPATCH (Verify correct frequency prior to starting report)

Ex: "Communications, Div. Alpha. Stand-by for Emergency Traffic."

2. INCIDENT STATUS: Provide incident summary (including number of patients) and command structure.

Ex: "Communications, I have a Red priority patient, unconscious, struck by a falling tree. Requesting air ambulance to Forest Road 1 at (Lat./Long.) This will be the Trout Meadow Medical, IC is TFLD Jones. EMT Smith is providing medical care."

Severity of Emergency / Transport Priority	<input type="checkbox"/> RED / PRIORITY 1 Life or limb threatening injury or illness. Evacuation need is IMMEDIATE <i>Ex: Unconscious, difficulty breathing, bleeding severely, 2° – 3° burns more than 4 palm sizes, heat stroke, disoriented.</i> <input type="checkbox"/> YELLOW / PRIORITY 2 Serious Injury or illness. Evacuation may be DELAYED if necessary. <i>Ex: Significant trauma, unable to walk, 2° – 3° burns not more than 1-3 palm sizes.</i> <input type="checkbox"/> GREEN / PRIORITY 3 Minor Injury or illness. Non-Emergency transport <i>Ex: Sprains, strains, minor heat-related illness.</i>	
Nature of Injury or Illness & Mechanism of Injury		<i>Brief Summary of Injury or Illness (Ex: Unconscious, Struck by Falling Tree)</i>
Transport Request		<i>Air Ambulance / Short Haul/Hoist Ground Ambulance / Other</i>
Patient Location		<i>Descriptive Location & Lat. / Long. (WGS84)</i>
Incident Name		<i>Geographic Name + "Medical" (Ex: Trout Meadow Medical)</i>
On-Scene Incident Commander		<i>Name of on-scene IC of Incident within an Incident (Ex: TFLD Jones)</i>
Patient Care		<i>Name of Care Provider (Ex: EMT Smith)</i>

3. INITIAL PATIENT ASSESSMENT: Complete this section for each patient as applicable (start with the most severe patient)

Patient Assessment: See IRPG page 106

Treatment:

4. TRANSPORT PLAN:

Evacuation Location (if different): (Descriptive Location (drop point, intersection, etc.) or Lat. / Long.) Patient's ETA to Evacuation Location:

Helispot / Extraction Site Size and Hazards:

5. ADDITIONAL RESOURCES / EQUIPMENT NEEDS:

Example: Paramedic/EMT, Crews, Immobilization Devices, AED, Oxygen, Trauma Bag, IV/Fluid(s), Splints, Rope rescue, Wheeled litter, HAZMAT, Extrication

6. COMMUNICATIONS: Identify State Air/Ground EMS Frequencies and Hospital Contacts as applicable

Function	Channel Name/Number	Receive (RX)	Tone/NAC *	Transmit (TX)	Tone/NAC *
COMMAND					
AIR-TO-GRND					
TACTICAL					

7. CONTINGENCY: Considerations: If primary options fail, what actions can be implemented in conjunction with primary evacuation method? Be thinking ahead.

8. ADDITIONAL INFORMATION: Updates/Changes, etc.

REMEMBER: Confirm ETA's of resources ordered. Act according to your level of training. Be Alert. Keep Calm. Think Clearly. Act Decisively.