

FINANCE MESSAGE

Finance Email: 2024.pioneer.finance@firenet.gov

Finance Phones: Equipment (208) 891-6877 & TIME (208) 891-8036

This incident requires electronic documentation. Please email your time to the Finance email address daily.
Finance documents required upon check in are:

Required Documents

| Overhead, Agency Crews & Cooperators | Contract Resources |
|---|--|
| Check-in docs needed: Resource Order, Manifest, Cooperative Agreement, Casual Hire Form w/ECI# (as applicable) | Check-in docs needed: Resource Order, Manifest, Full Contract/Agreement, Certifications <i>(If required)</i> Pre-Inspection |
| Daily: CTRs, Shift Tickets | Daily: CTRs, Shift Tickets, receipts (claims, etc.) |
| Demob: Signed OF-288; Signed OF-286 | Demob: Contractor Evaluations, Shift Tickets, receipt(s) for Addition/Deductions, Post-Inspection, Signed OF-286 |

Additional Incident Information (to be added to your Shift Ticket or CTR)

Incident Name: **Pioneer**

Incident Number: **WA-SES-000173**

Financial codes:

WA DNR – **221-LDW**

DOI – **RZ79**

USDA – **PNRZ79 (1522)**

THANK YOU!!

CHECK-IN

Please complete the virtual check-in process via the QR code on the front cover.

You are not checked in until you provide the following:

- Red Cards
- Roster/Manifest

Please email documents to:

2024.pioneer.demob@firenet.gov

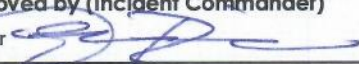
DEMOB

Fliers complete the “Air Travel Request” via the QR code on the front cover 72 hours prior to flight date.

- Return supplies to the Cache
- Return radios, antennas, etc., to Communications
- Contact Finance about closing out your paperwork

Once the above items have been completed, SCAN the QR code on the front cover and complete the demob questions.

If you have any questions about Check-In or DEMOB please email demob at 2024.pioneer.demob@firenet.gov.
Please include your request number in the subject line when emailing.

| | | | |
|--|--|---|------------------------|
| INCIDENT OBJECTIVES | 1. Incident Name Pioneer | 2. Date June 11, 2024 | 3. Time 2000 |
| 4. Operational Period: 06/12-0600-2200 | | | |
| 5. General Objectives: Implement suppression strategies/objectives for short-term and long-term incident planning. <ul style="list-style-type: none"> • Provide for firefighter and public safety through hazard identification and application of a shared risk management process. • Coordinate public information to provide timely updates to agency partners, cooperators, and the public. • Coordinate suppression activities with READs to identify impacts on the landscape. • Effectively manage and track costs with daily IAP reporting. • Coordinate with agency leadership/administrators to ensure effective and efficient management of firefighting resources. Operational objectives: <ul style="list-style-type: none"> • Implement a point protection strategy for current infrastructure on private lands and triage additional infrastructure within fire planning area. • Minimize fire impact on private lands. • Evaluate current fire conditions, identify/utilize features that could lead to fire growth, and validate strategic indirect (new/historical) control lines. • Develop a long-term strategic plan for suppression of the incident. • Utilize appropriate tactics for current/future fire environment and predominantly wilderness landscape . | | | |
| 5a. Incident Requirements <ul style="list-style-type: none"> • Provide Agency Administrator updates and briefings on incident status. • Firefighting operations will implement tactics that offer the highest probability of success to minimize impacts to the landscape and minimize unnecessary exposure to firefighters. • Incident values are firefighter and public safety, critical infrastructure, private land and natural resources. | | | |
| 5b. Leaders Intent <ul style="list-style-type: none"> • Safety: Firefighter, public, boat and aviation safety will be addressed through DRA process. • ISAP: Engage agencies with strategic alignment process, for shared values at risk. • Communication: Keep Agency Administrators and firefighters informed of strategic actions, accomplishments, and challenges. • Operations: Make informed strategic/tactical decisions suppressing the fire in the right geographic locations with the appropriate resources and highest probability of success. • Stakeholders: Collaborate with local partners, officials, and landowners to provide situational updates pertinent to the fire. • Logistics: Provide support ensuring food, water, and shelter for incident responders. • Human Resources: Ensure that all incident personnel are treated with dignity and respect, while having zero tolerance for harassment, alcohol, or illegal drug use. • Public Information: Provide timely and accurate information through media outlets, briefings, and social platforms as needed. • Finance: Monitor and communicate incident cost associated with meeting incident objectives. • Planning: Provide incident documentation, resource tracking, and meeting management. | | | |
| 6. Weather Forecast & General Safety Message for Period – See Attached | | | |
| 7. Attachments (mark if attached) | | | |
| <input checked="" type="checkbox"/> Organization List - ICS 203 | <input checked="" type="checkbox"/> Weather Forecast | <input checked="" type="checkbox"/> Safety Message | |
| <input checked="" type="checkbox"/> Div. Assignment Lists - ICS204 | <input checked="" type="checkbox"/> Fire Behavior Forecast | <input type="checkbox"/> Medical Emergency Com Plan | |
| <input checked="" type="checkbox"/> Communications Plan - ICS 205 | <input checked="" type="checkbox"/> Incident Map | <input type="checkbox"/> | |
| <input checked="" type="checkbox"/> Medical Plan - ICS 206 | <input checked="" type="checkbox"/> Air Operations - ICS 220 | <input type="checkbox"/> | |
| 9. Prepared by Aileen Nichols | 9. Approved by (Incident Commander) Eric Riener  | | |

| ORGANIZATION ASSIGNMENT LIST | |
|--|-------------------------------------|
| 1. Incident Name Pioneer | |
| 2. Date June 11, 2024 | 3. Time 1830 |
| 4. Operational Period June 12, 2024 0600-2200 | |
| Position | Name |
| NWIMT 13 LWD 6/24/2024 | |
| 5. Incident Commander and Staff | |
| Incident Commander | Brian Gales (O-8.1) |
| Deputy Incident Commander | Eric Riener (O-8.2) |
| Liaison Officer | Bill Neckels (O-8.3) |
| ISAP | Robert Burnside (O-14) |
| Information Officer | Eric Waters (O-8.5) |
| | |
| | |
| | |
| | |
| | |
| 6. Agency/Organization Representative(s): | |
| USFS Oak/Wen Agency Administrator | Kari Grover-Wier |
| USFS Oak/Wen Agency Administrator - † | Paul Willard |
| DNR Agency Administrator | Larry Leach |
| DNR Deputy Agency Administrator | Wyatt Leighton |
| LEAD READ | Brigitte Ranne |
| REAF - † | Hector Rodriguez |
| | |
| | |
| 7. Planning Section | |
| Plans Chief | Aileen Nichols (O-8.14) |
| Resources Unit | Meredith Butcher (O-8.15) |
| Status Check-In/ Demob Unit | Laura Backlund (O-8.20) |
| Situation Unit | Laurie Bergvall (O-8.18) |
| Fire Behavior Analyst | Dean Warner (O-8.19) |
| Incident Meteorologist | |
| GIS Specialist | Kayla Fermin (O-8.16) |
| Computer Specialist | Dave Johnson (O-8.17) |
| Computer Specialist | George Jenkins (O-64) |
| 8. Logistics Section | |
| Logistics Chief | Bryan Swanberg (O-8.22) |
| Deputy Logistics Chief | Cindy Preston (O-8.21) |
| Deputy Logistics Chief | Dave Willis (O-8.23) |
| Supply Unit Leader | Jon Byerly (O-8.25) |
| Ordering Manager | Robert Yarnall (O-8.30) |
| Communications Unit Ldr - † | Bruce Hanna (O-8.27) |
| Incident Comm Mgr | Catherina Contreras (O-8.31) |
| Com Tech | Brain Wolfenburger (O-8.32) |
| Food Unit Leader | Pat Young (O-8.26) |
| Facilities Unit Leader | Keith Yonaka (O-8.24) |
| Medical Unit Leader | James Brown (O-8.28) |
| Ground Support Unit | William Braddy (O-8.29) |
| Receiving/Distribution Mgr | Karl Peterson (O-31) |
| Base Camp Manager | Carl Schilter (O-12) |
| Security Manager | Chris Dodds (O-11) |
| | |
| | |

| 9. Operations Section | |
|--------------------------------------|---|
| Operations (Field) | John Spencer (O-8.6) Whitney Machado - † (O-8.41) |
| Operations (Planning) | Tom Hall (O-13) |
| | |
| a. Branch I | |
| Branch Director | Matt James (O-15) |
| Division Supervisor | A Unstaffed |
| Division Supervisor | Z Robert Boles (O-8.13) Pat Chism - † (O-26) |
| Group Supervisor | Structure Charlie Cronk (O-24) Chris Ramiskey - † (O-27) |
| b. Branch II | |
| Branch Director | Spencer Gregory (O-16) |
| Division Supervisor | S Annalee Graves (O-8.10) |
| Group Supervisor | Roads Jesse Stone (O-8.12) Aaron Bruning - † |
| | |
| | |
| c. | |
| | |
| d. Air Operations Branch | |
| Air Operations | Nancy Barker (O-8.8) Callen Wilkins - † (O-17) |
| Air Support Group | Jesse Machado - † (O-38) |
| Helibase Manager | David Kessler - † (O-39) |
| 10. Finance Section | |
| Finance Chief | Veronika Klukas (O-8.33) |
| Deputy Finance Chief | Paula James (O-8.34) |
| Cost Unit - Virtual | Lori Price (O-8.35) |
| Time Unit | Angie Chapman (O-8.36) |
| Personnel Time Recorder | Heather Fitzpatrick (O-8.38) |
| Proc Unit Leader | Eric Soto (O-8.37) |
| COMPS/CLAIMS | Laurette Gaylord (O-45) |
| Incident Cont. Project Insp | Stan Zazado (O-8.39) |
| In-Box Manager | Emily Cohn (O-46) |
| PREPARED BY: Meredith Butcher | |

PIONEER Spot Forecast - NW CIMT 13 - NWS Service Spokane WA

.DISCUSSION...

Winds will be noticeably less today.
The atmosphere behind the dry cold front will remain dry with minimum humidities near 25 percent through Thursday and possibly into Friday. Another dry cold front on Friday will bring breezy winds Friday afternoon. There will be slim shower chances Saturday to Monday as well, but the risk is only around 20%

.WEDNESDAY...

Sky/weather.....Sunny.
CWR.....0 percent.
LAL.....1.
Max temperature.....69.
Min humidity.....26 percent.
Wind (20 ft).....Northwest winds 3 to 7 mph.
Mixing height.....7500 ft AGL.
Transport winds.....Northwest 11 to 12 mph
Haines Index.....4 Low.

.WEDNESDAY NIGHT...

Sky/weather.....Mostly clear.
CWR.....0 percent.
LAL.....1.
Min temperature.....Around 48.
Max humidity.....48 percent.
Wind (20 ft).....Northwest winds 5 to 9 mph.
Mixing height.....500 ft AGL.
Transport winds.....Northwest 9 to 13 mph.
Haines Index.....4 Low.

.THURSDAY...

Sky/weather.....Sunny then becoming partly sunny.
CWR.....0 percent.
LAL.....1.
Max temperature.....75.
Min humidity.....27 percent.
Wind (20 ft).....North winds around 5 mph in the morning
becoming upslope 5 to 10 in the afternoon
Mixing height.....8000 ft AGL.
Transport winds.....Northeast around 6 mph shifting to the south
around 10 mph in the afternoon.
Haines Index.....4 Low.

Fire Behavior Forecast # 1

| | |
|--|--|
| Name of Incident: Pioneer Fire WA-SES-000173 | Administrative Unit: SE Region DNR / Okanagan-Wenatchee NF |
| Date & Time Issued: 1900 – 6/11/2024 | Operational Period: Day 6/12/2024 |

| | |
|-----------------------------|----------------|
| FBAN: Dean Warner | Signed: |
|-----------------------------|----------------|

Weather Summary - See attached Spot Weather Forecast.
 Sunny and dry with seasonal average temperatures.

Fire Behavior Summary

| General – Max. spot distance: 0.2 mi. Probability of Ignition: 50% Haines Index: 4 (low) LAL: 1 ERC – Y: 40 (73 percentile) | FUEL MODEL | Maximum ROS | Backing ROS | Maximum Flame length | Backing Flame length |
|--|-----------------------------------|-----------------|----------------|----------------------|----------------------|
| | GR2 - Moderate load grass shrub | 4 ch/hr | ½ ch/hr | 1 feet | 1 feet |
| | SH2 - Moderate load shrub | 2 ch/hr | ½ ch/hr | 2 feet | 1 feet |
| | TU5 – Very high load timber shrub | 10 ch/hr | ½ ch/hr | 8 feet | 2 feet |
| | TL8 – Long needle timber litter | 8 ch/hr | ½ ch/hr | 4 feet | 1 feet |

General: The fire will remain active today. Greener fuels above 2500 feet may tend to limit fire growth. Over all fire movement will be up hill to the northeast and to the south into Rex Creek. If spotting develops, maximum distance is not likely to exceed 2 tenths of a mile.

Fuels: The fire is burning in the old Rex Creek burn scar from 2001. This 23 year old fire scar has left behind a mosaic of fuels including a moderate load of heavy fuel, which is dry enough to sustain fire spread. Timber stringers in valleys and draws tend to contain concentrations of available fuel. Rock outcrops can sever the fuel continuity but dry grass and sparse dead and downed material in rocky areas can still maintain fire movement.

Topography: This fire lies on the north slopes of the lake providing a very dry south and west aspect. Steep rugged terrain dominates the fire environment. Rolling material and short upslope runs will pose a significant safety risk. Several natural barriers in the form of rock outcrops and scree slopes are present in the fire area. Evaluate natural barriers for absolute lack of fuel prior to utilizing as a containment feature. Expect slope reversals to be more dramatic than usual as this type of fire movement will present in severe contrast from backing rates of spread (ROS).

Seasonality: Given the time of year, live fuels remain green and will tend to keep ROS and flame lengths from being overly active.

ERC: Due to the time of year, Energy Release Component values remain below the 90th percentile. The dry aspect, lake winds, and steep slopes offer ample opportunity for this fire to remain active.

Air Ops/Smoke Dispersion

Smoke from active fire may impact visibility for air operations; otherwise no impacts are expected.

Safety

Watch for slope reversals. All line resources, lookouts especially, need to know where the fire is on the landscape and the potential for slope reversals to occur. Know your escape routes and safety zones to avoid any sudden changes caused by slope reversals.

| | | | | | | |
|--|--|---|---|---------------------|---------------------------|---------------------|
| DIVISION ASSIGNMENT LIST | | | 1. Branch I | | 2. Division A | |
| 3. Incident Name Pioneer | | | 4. Operational Period Date: 06/12/2024 Time: 0600-2200 | | | |
| 5. Operations Personnel | | | | | | |
| Operations Chief | | John Spencer Whitney Machado - t | | Branch Director | | Matt James |
| Safety Officer | | Ray Hershey | | Division Supervisor | | Unstaffed |
| 6. Resources Assigned this Period | | | | | | |
| | Strike Team/Task Force/Resource Designator | Leader | # Persons | LWD | Drop Off PT./Time | Pick Up PT./Time |
| 1 | | | | | | |
| 2 | | | | | | |
| 3 | | | | | | |
| 4 | | | | | | |
| 5 | | | | | | |
| 6 | | | | | | |
| 7 | | | | | | |
| 8 | | | | | | |
| 9 | | | | | | |
| 10 | | | | | | |
| 11 | | | | | | |
| 12 | | | | | | |
| 13 | | | | | | |
| 14 | | | | | | |
| 15 | | | | | | |
| 16 | | | | | | |
| 17 | | | | | | |
| 18 | | | | | | |
| 19 | | | | | | |
| 20 | | | | | | |
| 21 | | | | | | |
| 22 | | | | | | |
| 23 | | | | | | |
| 24 | | | | | | |
| | | Meal count | | | | |
| 7. Control Operations: Task: Purpose: End state: | | | | | | |
| 8. Special Instructions: | | | | | | |
| 9. Division/Group Communication Summary | | | | | | |
| See Communications Plan | | | | | | |
| Prepared by (Resource Unit Ldr) <i>Meredith Butcher</i> | | | Approved by (Planning Sect. Ch.) <i>Aileen Nichols</i> | | Date 06/11/2024 | Time 2000 |

| | | | | | | |
|---|---------------------------------|---|---|---------------------------|-------------------------|---------------------------------------|
| DIVISION ASSIGNMENT LIST | | | 1. Branch I | | 2. Division Z | |
| 3. Incident Name Pioneer | | | 4. Operational Period Date: 06/12/2024 Time: 0600-2200 | | | |
| 5. Operations Personnel | | | | | | |
| Operations Chief | | John Spencer Whitney Machado - t | | Branch Director | | Matt James |
| Safety Officer | | Ray Hershey | | Division Supervisor | | Robert Boles Pat Chism - t |
| 6. Resources Assigned this Period | | | | | | |
| Strike Team/Task Force/Resource Designator | | Leader | # Persons | LWD | Drop Off PT./Time | Pick Up PT./Time |
| 1 | C-3 CRW1 Baker River IHC | Chicks | 23 | | | |
| 2 | C-4 CRW1 LaGrande IHC | Elquezabal | 21 | | | |
| 3 | Chelan/Entiat Crew 22/52 | Boots | 15 | 6/12 | | |
| 4 | | | | | | |
| 5 | O-41 WFM1 Eagle Cap | Gabe Hale | 10 | | | |
| 6 | | | | | | |
| 7 | | | | | | |
| 8 | | | | | | |
| 9 | | | | | | |
| 10 | | | | | | |
| 11 | | | | | | |
| 12 | | | | | | |
| 13 | | | | | | |
| 14 | | | | | | |
| 15 | | | | | | |
| 16 | | | | | | |
| 17 | | | | | | |
| 18 | | | | | | |
| 19 | | | | | | |
| 20 | | | | | | |
| | | Meal count | 69 | | | |
| 7. Control Operations: Task: Contain fire spread to the southwest where terrain and fuels allow for high probability of success. Assess fire perimeter progression to the west/southwest at higher elevations. Purpose: To contain the fire where we have high probability of success and to monitor the fire's progression. End state: Fire is contained in the southwest and location of uncontained fire perimeter is known. | | | | | | |
| 8. Special Instructions: 24, 48, 72 hour planning/logistical support will be paramount to our success. | | | | | | |
| 9. Division/Group Communication Summary See Communications Plan | | | | | | |
| Prepared by (Resource Unit Ldr) <i>Meredith Butcher</i> | | Approved by (Planning Sect. Ch.) <i>Aileen Nichols</i> | | Date 06/11/2024 | | Time 2000 |

| | | | | | | |
|---|-------------------------------------|---|---|---------------------------|------------------------------|---|
| DIVISION ASSIGNMENT LIST | | | 1. Branch I | | 2. Group Structure | |
| 3. Incident Name Pioneer | | | 4. Operational Period Date: 06/12/2024 Time: 0600-2200 | | | |
| 5. Operations Personnel | | | | | | |
| Operations Chief | | John Spencer Whitney Machado - t | | Branch Director | | Matt James |
| Safety Officer | | Ray Hershey | | Division Supervisor | | Charlie Cronk Chris Ramiskey - t |
| 6. Resources Assigned this Period | | | | | | |
| Strike Team/Task Force/Resource Designator | | Leader | # Persons | LWD | Drop Off PT./Time | Pick Up PT./Time |
| 1 | C-1 CRW2 DNR Crew 411 | Lyle | 16 | | | |
| 2 | C-2 CR2I Wenatchee River C74 | Marquart | 13 | | | |
| 3 | | | | | | |
| 4 | O-20 TFLD-t Boat Coordinator | Katy Giddings | 1 | | | |
| 5 | | | | | | |
| 6 | EMTB | Granburg | 1 | | | |
| 7 | O-43 REMS 1 | Caitlin Lucia | 4 | | | |
| 8 | | | | | | |
| 9 | | | | | | |
| 10 | | | | | | |
| 11 | | | | | | |
| 12 | | | | | | |
| 13 | | | | | | |
| 14 | | | | | | |
| 15 | | | | | | |
| 16 | | | | | | |
| 17 | | | | | | |
| 18 | | | | | | |
| 19 | | | | | | |
| 20 | | | | | | |
| | | Meal count | 35 | | | |
| 7. Control Operations: Task: Point protection at inholdings and trail system infrastructure between Prince Creek and Cascade Creek. Purpose: To protect inholdings and infrastructure. End state: Inholdings and infrastructure are secure from fire impacts. | | | | | | |
| 8. Special Instructions: Boat Coordinator will be located at Fields Point. 24, 48, 72 hour planning/logistical support will be paramount to our success. | | | | | | |
| 9. Division/Group Communication Summary See Communications Plan | | | | | | |
| Prepared by (Resource Unit Ldr) <i>Meredith Butcher</i> | | Approved by (Planning Sect. Ch.) <i>Aileen Nichols</i> | | Date 06/11/2024 | Time 2000 | |

| | | | | | | |
|--|--|---|---|---------------------|---------------------------|------------------------|
| DIVISION ASSIGNMENT LIST | | | 1. Branch II | | 2. Division S | |
| 3. Incident Name Pioneer | | | 4. Operational Period Date: 06/12/2024 Time: 0600-2200 | | | |
| 5. Operations Personnel | | | | | | |
| Operations Chief | | John Spencer Whitney Machado - t | | Branch Director | | Spencer Gregory |
| Safety Officer | | Ray Hershey | | Division Supervisor | | Anna Graves |
| 6. Resources Assigned this Period | | | | | | |
| Strike Team/Task Force/Resource Designator | | Leader | # Persons | LWD | Drop Off PT./Time | Pick Up PT./Time |
| 1 | | | | | | |
| 2 | | | | | | |
| 3 | | | | | | |
| 4 | | | | | | |
| 5 | | | | | | |
| 6 | | | | | | |
| 7 | | | | | | |
| 8 | | | | | | |
| 9 | | | | | | |
| 10 | | | | | | |
| 11 | | | | | | |
| 12 | | | | | | |
| 13 | | | | | | |
| 14 | | | | | | |
| 15 | | | | | | |
| 16 | | | | | | |
| 17 | | | | | | |
| 18 | | | | | | |
| 19 | | | | | | |
| 20 | | | | | | |
| | | Meal count | | | | |
| 7. Control Operations: Task: Scout division S for secondary control line opportunities (8200 Rd, Coyote Ridge, Nelson Butte and Gold Creek 600 Rd). Purpose: To identify opportunities for control line. End state: Potential control lines are identified in alignment with suppression strategy. | | | | | | |
| 8. Special Instructions: 24, 48, 72 hour planning/logistical support will be paramount to our success. | | | | | | |
| 9. Division/Group Communication Summary See Communications Plan | | | | | | |
| Prepared by (Resource Unit Ldr) <i>Meredith Butcher</i> | | | Approved by (Planning Sect. Ch.) <i>Aileen Nichols</i> | | Date 06/11/2024 | Time 2000 |

| | | | | | | |
|--|--|---|---|---------------------------|--------------------------|--|
| DIVISION ASSIGNMENT LIST | | | 1. Branch II | | 2. Group Roads | |
| 3. Incident Name Pioneer | | | 4. Operational Period Date: 06/12/2024 Time: 0600-2200 | | | |
| 5. Operations Personnel | | | | | | |
| Operations Chief | | John Spencer Whitney Machado - t | | Branch Director | | Spencer Gregory |
| Safety Officer | | Ray Hershey | | Division Supervisor | | Jesse Stone Aaron Bruning - t |
| 6. Resources Assigned this Period | | | | | | |
| Strike Team/Task Force/Resource Designator | | Leader | # Persons | LWD | Drop Off PT./Time | Pick Up PT./Time |
| 1 | | | | | | |
| 2 | | | | | | |
| 3 | | | | | | |
| 4 | | | | | | |
| 5 | | | | | | |
| 6 | | | | | | |
| 7 | | | | | | |
| 8 | | | | | | |
| 9 | | | | | | |
| 10 | | | | | | |
| 11 | | | | | | |
| 12 | | | | | | |
| 13 | | | | | | |
| 14 | | | | | | |
| 15 | | | | | | |
| 16 | | | | | | |
| 17 | | | | | | |
| 18 | | | | | | |
| 19 | | | | | | |
| 20 | | | | | | |
| | | Meal count | | | | |
| 7. Control Operations: Task: Scout and prep 8200 Rd (Grade Creek Rd) to be utilized for mobilization of division S resources. Purpose: To open the 8200 Rd for use. End state: 8200 Rd is accessible for fire resources. | | | | | | |
| 8. Special Instructions: 24, 48, 72 hour planning/logistical support will be paramount to our success. | | | | | | |
| 9. Division/Group Communication Summary See Communications Plan | | | | | | |
| Prepared by (Resource Unit Ldr) <i>Meredith Butcher</i> | | Approved by (Planning Sect. Ch.) <i>Aileen Nichols</i> | | Date 06/11/2024 | Time 2000 | |

| 1. Incident Name: | | | 2. Date/Time Prepared: | | | 3. Operational Period: | | | | |
|------------------------------------|------|---------------|---|-------------------|----------|---------------------------------|----------|-----------------------------|-------------------------------|----------------------------|
| PIONEER | | | Date: 06/11/2024 Time: 18:00 | | | Date/Time From: 06/12/2024 0600 | | | Date/Time To: 06/12/2024 2200 | |
| 4. Basic Radio Channel Use: | | | | | | | | | | |
| Zone Group | Ch # | Function | Channel Name/Trunked Radio System Talkgroup | Assignment | RX Freq | RX Tone/NAC | TX Freq | TX Tone/NAC | Mode (A,D, or M) | Remarks |
| | 1 | COMMAND | SLIDE | ALL DIVS | 173.0500 | 146.2 | 164.9125 | 141.3 | A | SLIDE MT (SE OF FIRE) |
| | 2 | COMMAND | OLD MAID | ALL DIVS | 173.0500 | 146.2 | 164.9125 | 136.5 | A | OLD MAID MT (N OF FIRE) |
| | 3 | TACTICAL-1 | FS TAC | DIVS A&Z | 168.2000 | 000.0 | 168.2000 | 000.0 | A | |
| | 4 | TACTICAL-2 | WEN-PROJ | DIVS S & ROADS | 168.6750 | 000.0 | 168.6750 | 000.0 | A | |
| | 5 | LOCAL RPTR | MCGREGOR | | 166.7500 | 000.0 | 165.9750 | 131.8 | A | BACK-UP REPEATER |
| | 6 | ROAD TRAFFIC | TRAFFIC | ALL DIVS | 159.5400 | 000.0 | 159.5400 | 000.0 | A | TRAFFIC |
| | 7 | TACTICAL | DNR COMMON | TACTICAL | 151.4150 | 103.5 | 151.4150 | 103.5 | A | |
| | 8 | LOCAL RPTR | DNR CHELAN | | 159.2250 | 156.7 | 151.4750 | 156.7 | A | BACK-UP REPEATER |
| | 9 | BLANK | | | | | | | A | |
| | 10 | BLANK | | | | | | | A | |
| | 11 | AIR-GROUND | A/G PRI | AIR PRIMARY | 169.1500 | 000.0 | 169.1500 | 000.0 | A | |
| | 12 | AIR-GROUND | A/G SEC | AIR SECONDARY | 168.4000 | 000.0 | 168.4000 | 000.0 | A | |
| | 13 | BLANK | | | | | | | A | |
| | 14 | BLANK | | | | | | | A | |
| | 15 | AIR MEDICAL | VMED 29 | AIR MEDICAL | 155.3475 | 156.7 | 155.3475 | 156.7 | A | EMS AIR COORDINATION |
| | 16 | AIR TO GROUND | AIRGUARD | AIRGUARD | 168.6250 | 000.0 | 168.6250 | 110.9 | A | EMERGENCY AIRCRAFT CONTACT |
| 5. Special Instructions: | | | | | | | | | | |
| | | | | | | | | | | |
| 6. Prepared By COML | | | | Name: Bruce Hanna | | | | Signature: /s/ Bruce Hanna | | |
| ICS 205 | | | | IAP Page | | | | Date/Time: 06/11/2024 19:00 | | |



OKANOGAN-WENATCHEE NATIONAL FOREST

Resource Guidelines for Uplake Fire Suppression

Fire: Pioneer

Location: Pioneer Creek, North shore of Lake Chelan

Date: 6/11/2024

Resource Advisors

Lead READ: Brigitte Ranne 509-663-6118, brigitte.ranne@usda.gov

REAF trainee: Hector Rodriguez

HUMAN SAFETY IS THE HIGHEST PRIORITY FOR EVERY EMERGENCY RESPONSE ACTION

MIST for Spike Camp and Lucerne Forward Operating Base Management

- Employ minimum impact suppression tactics (MIST) where feasible, especially in remote or sensitive areas.
- If spike camps are necessary, use existing, or previously impacted campsites where available. If existing campsites are not available; use your local resource advisor to help identify the most resilient sites in rocky or sandy soils. Avoid camping in wet meadows, along streams, or on lake shores.
- In small spike camp situations (not Lucerne), individuals should use the "cat-hole" method of disposing of human waste. Toilet seats should be located a minimum of 200 feet from water sources. Holes should be dug 6-8 inches deep.
- Store food properly so that it is not accessible to wildlife. Consider hanging food in trees at least 15 feet off the ground and 5 feet from the trunk of the tree, or store food in sealable containers. Store food away from the campsite (300 feet is ideal) to reduce the risk of human and bear (and rodent!) conflicts.
- Do not let garbage and food scraps accumulate in camp. All garbage and food scraps need to be removed from the camp ASAP and before leaving the site.
- Minimize disturbance to land in preparing bedding and campfire sites. Do not clear vegetation, trench, or excavate a flat spot to create bedding sites.
- Do not use nails in trees. Don't construct camp furniture.
- If a campfire is built for warmth in the evening, build either a pit or mound fire. Use dead and down firewood. Use small diameter wood that burns down more cleanly. Don't burn plastics or aluminum - pack it out with the rest of the camp garbage.

Dipping and Drafting

- No cross-dipping between water bodies. All buckets or snorkels should be cleaned, inspected, and dried in the sun if they must be used between lakes. Dipping in small lakes must be pre-approved by the READ or AA.
- When drafting, use already disturbed areas for stream access (road crossings, dispersed campsites) to reduce the need for riparian vegetation clearing.
- Use screens (3/32" inch) for all pumping operations.
- Use containment pads and basins under pumps and fuel cans. Ensure a spill kit is present with every operating pump.

Invasive Species

- The fire is burning within an infestation of common crupina, a WA State Class A Noxious weed. Prevent spread of crupina off site – plan to wash hose and other equipment. Request fire fighters brush boots before boarding boat.
- Inspect slings and remove all plant/soil material prior to use.
- Ensure all camps, staging areas, helispots and cargo areas are free of invasive plants to prevent spread to un-infested areas.

Fisheries /Aquatic Recommendations

- If trees must be felled in riparian areas for suppression or safety reasons, fell them toward streams where possible and minimize bucking where possible.

Cultural Resources

- If cultural resources are discovered during suppression activities, leave on site and notify READ.



Crupina Seed



Location of common crupina infestations (north shore of Lake Chelan only). The infestation shown at Lucerne is knapweed.

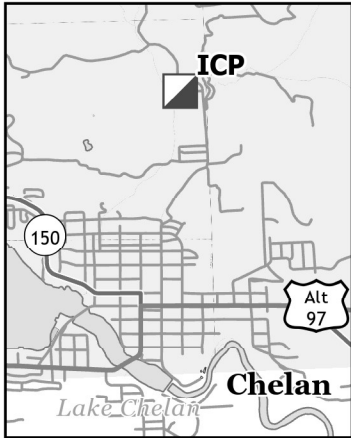


IAP

Pioneer
WA-SES-000173
06/12/2024 16hr

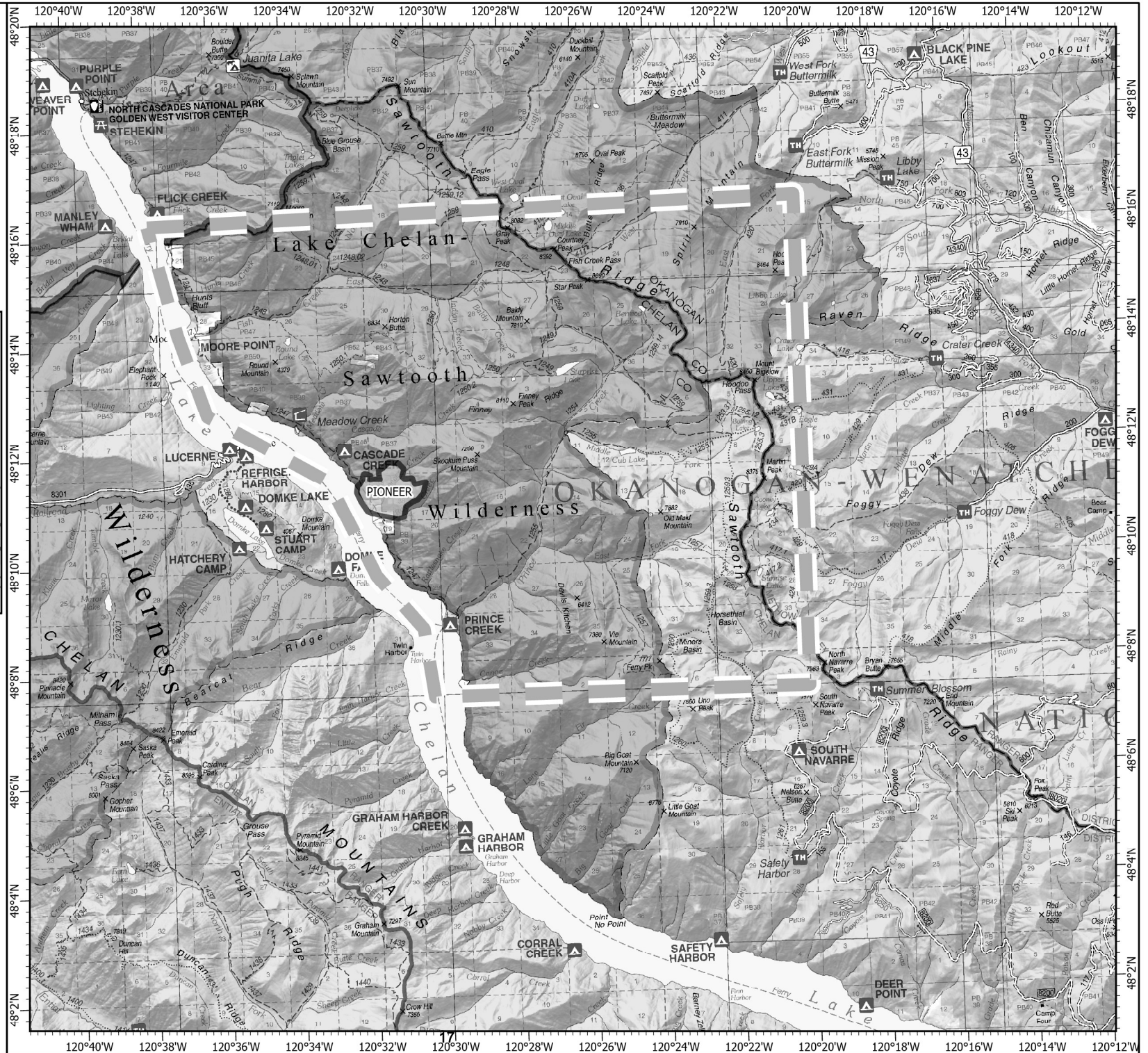
672 acres on 6/11/2024 @ 0848

ICP: Chelan Rodeo Grounds
1099 N Bradley St.
Chelan, WA 98816



- Temporary Flight Restriction
- Wildfire Daily Fire Perimeter

0 1.8 3.5
Miles
1:178,322 | CIMT NW13 | 6/11/2024 1828
Acres from IR
North American 1983 Datum, LatLong Grid



RETURN TO PLANNING OPS BY 1300 HRS
Via radio (preferred method), text, email, photo, or cell phone
Project for Next Operational Period and 48 & 72 hours in the Future

| DIVISION PLANNING SHEET | | Division/ Group | Name Of Division /Group Supervisor | | |
|--|---|-----------------|------------------------------------|----------|---------------|
| Next Operational Period Date: | | | | | |
| Operations and Resource unit text number and e-mail | | | | | |
| | | | | | |
| <input type="checkbox"/> - Roll over assigned Resources <input type="checkbox"/> -Excess resources <input type="checkbox"/> -Correction to 204 | | | | | |
| E or C number | Strike Team/Task Force/ Resource Designator | Leader | Number Persons | Comments | |
| | | | | | |
| | | | | | |
| | | | | | |
| | | | | | |
| | | | | | |
| | | | | | |
| | | | | | |
| | | | | | |
| | | | | | |
| <input type="checkbox"/> -Request for additional Resources | | | | | |
| Number | Type | Resource Kind | Number | Type | Resource Kind |
| | | | | | |
| | | | | | |
| | | | | | |
| | | | | | |
| | | | | | |
| Operational Projection/Resource Needs/Excess Resources (48 hours): | | | | | |
| | | | | | |
| Operational Projection/Resource Needs/Excess Resources (72 hours): | | | | | |
| | | | | | |
| Comments | | | | | |
| | | | | | |

| 1. Incident/Project Name | | | | 2. Operational Period | | | | | | | | | | | |
|--|--|---|--|--------------------------------------|--|---|--|-------------------------------------|--|-------------------------------|--|-------------|--|--|--|
| Pioneer Fire | | | | Date/Time: 06/12/24 0600-2200 | | | | | | | | | | | |
| 3. Ambulance Services | | | | | | | | | | | | | | | |
| Name | | Complete Address | | Phone | | Advanced Life Support (ALS) Yes No | | | | | | | | | |
| Lake Chelan EMS | | Chelan, WA | | 911 | | X | | | | | | | | | |
| 4. Air Ambulance Services | | | | | | | | | | | | | | | |
| Name | | Phone | | Type of Aircraft & Capability | | | | | | | | | | | |
| Life Flight- Brewster | | 1-800-232-0911 911 | | Rotor, ALS, 24 hr | | | | | | | | | | | |
| Airlift NW- Wenatchee | | 1-800-426-2430 911 | | Rotor, ALS, 24 hr | | | | | | | | | | | |
| Wenatchee Short haul- Chelan Airport | | Order Through CWICC | | Rotor, BLS, Daytime, Short haul | | | | | | | | | | | |
| Snohawk 10- Snohomish | | 1-800-258-5990 911 | | Rotor, ALS, Daytime, Hoist | | | | | | | | | | | |
| Spokane County Hoist-Spokane | | 1-509-532-8930 911 | | Rotor, ALS, 24 hr, Hoist | | | | | | | | | | | |
| 5. Hospitals | | | | | | | | | | | | | | | |
| Name | | Degrees Decimal Minutes | | Travel Time From Fire Air Boat | | Phone | | Helipad Yes No | | Level of Care | | | | | |
| Lake Chelan Health 110 S. Apple Blossom Drive Chelan WA | | Lat: 47° 50' 20 N | | 30 Min 3 Hrs | | 509-683-2474 | | X | | Level IV Trauma | | | | | |
| | | Long: 119° 59' 20 W | | | | | | | | | | | | | |
| Central Washington Hospital 1201 S. Miller Wenatchee WA | | Lat: 47° 24. 43 N | | 1 Hr 4 Hrs | | 509-433-3115 | | X | | Level II Trauma | | | | | |
| | | Long: 120° 19. 28 W | | | | | | | | | | | | | |
| Harborview Medical Center 325 9 th Ave Seattle WA | | Lat: 47° 36. 24 N | | 1.5 Hr 6 Hrs | | 206-744-4025 | | X | | Level I Trauma Burn Center | | | | | |
| | | Long: 122° 19. 45 W | | | | | | | | | | | | | |
| ICP | | EMS Responders & Capability: | | | | James Brown MEDL/Paramedic | | 360-775-5413 | | | | | | | |
| | | Equipment Available on Scene: | | | | ALS Kit, AED, O2, OTC meds | | | | | | | | | |
| | | Medical Emergency Channel: | | | | Old Maid Repeater | | | | | | | | | |
| | | ETA for Ambulance to Scene: | | | | | | | | | | | | | |
| | | Air: | | | | NA | | | | | | | | | |
| | | Ground: | | | | 15 Min | | | | | | | | | |
| | | Approved Heli-Spot: | | | | NA | | | | | | | | | |
| | | Lat: | | | | NA | | | | | | | | | |
| Long: | | | | NA | | | | | | | | | | | |
| BRANCH I | | EMS Responders & Capability: | | | | REMS 1 Caitlin Lucia +3. | | 443-699-2512 | | | | | | | |
| | | Equipment Available on Scene: | | | | ALS Kit, Defib, O2, Rescue gear | | | | | | | | | |
| | | Medical Emergency Channel: | | | | Old Maid Repeater | | | | | | | | | |
| | | ETA for Ambulance to Scene: | | | | | | | | | | | | | |
| | | Air: | | | | 2 hr | | | | | | | | | |
| | | Water/Ground: | | | | 3 hr | | | | | | | | | |
| | | Approved Heli-Spot: | | | | | | | | | | | | | |
| | | H-1 48° 10.813 N 120° 31.9242 W | | | | LUCERNE 48° 12.1624 N 120° 35.4476 W | | | | | | | | | |
| BRANCH II | | EMS Responders & Capability: | | | | | | | | | | | | | |
| | | Equipment Available on Scene: | | | | | | | | | | | | | |
| | | Medical Emergency Channel: | | | | Old Maid Repeater | | | | | | | | | |
| | | ETA for Ambulance to Scene: | | | | | | | | | | | | | |
| | | Air: | | | | 2 hr | | | | | | | | | |
| | | Ground: | | | | 3 hr | | | | | | | | | |
| | | Approved Heli-Spot: | | | | | | | | | | | | | |
| | | Lat: | | | | | | | | | | | | | |
| Long: | | | | | | | | | | | | | | | |
| Prepared By (Medical Unit Leader) | | | | Date | | | | Reviewed By (Safety Officer) | | | | Date | | | |
| James Brown MEDL | | | | 06/11/24 | | | | Ray Hershey SOF2 | | | | 06/11/24 | | | |
| Signature: <i>James Brown</i> | | | | | | | | Signature: <i>Ray Hershey</i> | | | | | | | |

MEDICAL PLAN (ICS 206 WF)

Controlled Unclassified Information//Basic

Medical Incident Report

FOR A NON-EMERGENCY INCIDENT, WORK THROUGH CHAIN OF COMMAND TO REPORT AND TRANSPORT INJURED PERSONNEL AS NECESSARY.

FOR A MEDICAL EMERGENCY: IDENTIFY ON-SCENE INCIDENT COMMANDER BY NAME AND POSITION AND ANNOUNCE "MEDICAL EMERGENCY" TO INITIATE RESPONSE FROM IMT COMMUNICATIONS/DISPATCH.

Use the following items to communicate situation to communications/dispatch.

1. CONTACT COMMUNICATIONS / DISPATCH (Verify correct frequency prior to starting report)

Ex: "Communications, Div. Alpha. Stand-by for Emergency Traffic."

2. INCIDENT STATUS: Provide incident summary (including number of patients) and command structure.

Ex: "Communications, I have a Red priority patient, unconscious, struck by a falling tree. Requesting air ambulance to Forest Road 1 at (Lat./Long.) This will be the Trout Meadow Medical, IC is TFLD Jones. EMT Smith is providing medical care."

| | | |
|---|--|---|
| Severity of Emergency / Transport Priority | <input type="checkbox"/> RED / PRIORITY 1 Life or limb threatening injury or illness. Evacuation need is IMMEDIATE <i>Ex: Unconscious, difficulty breathing, bleeding severely, 2° – 3° burns more than 4 palm sizes, heat stroke, disoriented.</i> <input type="checkbox"/> YELLOW / PRIORITY 2 Serious Injury or illness. Evacuation may be DELAYED if necessary. <i>Ex: Significant trauma, unable to walk, 2° – 3° burns not more than 1-3 palm sizes.</i> <input type="checkbox"/> GREEN / PRIORITY 3 Minor Injury or illness. Non-Emergency transport <i>Ex: Sprains, strains, minor heat-related illness.</i> | |
| Nature of Injury or Illness & Mechanism of Injury | | <i>Brief Summary of Injury or Illness (Ex: Unconscious, Struck by Falling Tree)</i> |
| Evacuation Request | | <i>Air Ambulance / Short Haul/Hoist Ground Ambulance / Other</i> |
| Patient Location | | <i>Descriptive Location & Lat. / Long. (WGS84)</i> |
| Incident Name | | <i>Geographic Name + Medical (Ex: Trout Meadow Medical)</i> |
| On-Scene Incident Commander | | <i>Name of on-scene IC of Incident within an Incident (Ex: TFLD Jones)</i> |
| Patient Care | | <i>Name of Care Provider (Ex: EMT Smith)</i> |

3. INITIAL PATIENT ASSESSMENT: Complete this section for each patient as applicable (start with the most severe patient)

Patient Assessment: See IRPG PAGE 106

Treatment:

4. EVACUATION PLAN:

Evacuation Location (if different): (Descriptive Location (drop point, intersection, etc.) or Lat. / Long.) Patient's ETA to Evacuation Location:

Helispot / Extraction Site Size and Hazards:

5. ADDITIONAL RESOURCES / EQUIPMENT NEEDS:

Example: Paramedic/EMT, crews, immobilization devices, AED, oxygen, trauma bag, IV/fluid(s), splints, rope rescue, wheeled litter, HAZMAT, extrication

6. COMMUNICATIONS: Identify State Air/Ground EMS Frequencies and Hospital Contacts as applicable

| Function | Channel Name/Number | Receive (RX) | Tone/NAC * | Transmit (TX) | Tone/NAC * |
|-------------|---------------------|--------------|------------|---------------|------------|
| COMMAND | | | | | |
| AIR-TO-GRND | | | | | |
| TACTICAL | | | | | |

7. CONTINGENCY: Considerations: If primary options fail, what actions can be implemented in conjunction with primary evacuation method? Be thinking ahead..

8. ADDITIONAL INFORMATION: Updates/Changes, etc.

REMEMBER: Confirm ETAs of resources ordered. Act according to your level of training. Be Alert. Keep Calm. Think Clearly. Act Decisively.