

# Pioneer Incident Action Plan

**Thursday June 13, 2024**  
Morning Radio Briefing: 0700  
Operational Period: 0600-2200

WA-SES-000173  
USFS PNRZ79 (1522) - DOI RZ79 - DNR 221-LDW



MAPS-IAP-Check-In



## Health & Safety Message

### Risk Management

- Establish situational awareness
- Identify hazards and assess the risk
- Control or eliminate hazards
- Make decisions based on acceptability of risk
- Evaluate effectiveness of hazard controls and continuously evaluate current situation



### Safety Thought

The most important thing that you can do to keep you and everyone around you from getting sick is to wash yourself hands!

### Notes

Please Send Photos To  
2024.pioneer@firenet.gov

	Ground	Air
FS:		
DNR:		
OSC:		
FS AA:		
DNR AA:		

## FINANCE MESSAGE

**Finance Email:** [2024.pioneer.finance@firenet.gov](mailto:2024.pioneer.finance@firenet.gov)

**Finance Phones:** Equipment (208) 891-6877 & TIME (208) 891-8036

**This incident requires electronic documentation.** Please email your time to the Finance email address daily. Finance documents required upon check in are:

### Required Documents

Overhead, Agency Crews & Cooperators	Contract Resources
<b>Check-in docs needed:</b> Resource Order, Manifest, Cooperative Agreement, Casual Hire Form w/ECI# (as applicable)	<b>Check-in docs needed:</b> Resource Order, Manifest, Full Contract/Agreement, Certifications <i>(If required)</i> Pre-Inspection
<b>Daily:</b> CTRs, Shift Tickets	<b>Daily:</b> CTRs, Shift Tickets, receipts (claims, etc.)
<b>Demob:</b> Signed OF-288; Signed OF-286	<b>Demob:</b> Contractor Evaluations, Shift Tickets, receipt(s) for Addition/Deductions, Post-Inspection, Signed OF-286

Additional Incident Information (to be added to your Shift Ticket or CTR)

Incident Name: **Pioneer**

Incident Number: **WA-SES-000173**

Financial codes:

WA DNR – **221-LDW**

DOI – **RZ79**

USDA – **PNRZ79 (1522)**

**Please make sure you check in using QR code on the front of the IAP and then email your time daily.**

**THANK YOU!!**

### CHECK-IN

Please complete the virtual check-in process via the QR code on the front cover.

You are not checked in until you provide the following:

- Red Cards
- Roster/Manifest

**Please email documents to:**

[2024.pioneer.demob@firenet.gov](mailto:2024.pioneer.demob@firenet.gov)

### DEMOB

**Fliers complete the “Air Travel Request” via the QR code on the front cover 72 hours prior to flight date.**

- Return supplies to the Cache
- Return radios, antennas, etc., to Communications
- Contact Finance about closing out your paperwork

**Once the above items have been completed, SCAN the QR code on the front cover and complete the demob questions.**

If you have any questions about Check-In or DEMOB please email demob at [2024.pioneer.demob@firenet.gov](mailto:2024.pioneer.demob@firenet.gov). Please include your request number in the subject line when emailing.

<b>INCIDENT OBJECTIVES</b>	<b>1. Incident Name</b> Pioneer	<b>2. Date</b> June 12, 2024	<b>3. Time</b> 2000
<b>4. Operational Period: 06/13 0600-2200</b>			
<b>5. General Objectives:</b> Implement suppression strategies/objectives for short-term and long-term incident planning. <ul style="list-style-type: none"> <li>• Provide for firefighter and public safety through hazard identification and application of a shared risk management process.</li> <li>• Coordinate public information to provide timely updates to agency partners, cooperators, and the public.</li> <li>• Coordinate suppression activities with READs to identify impacts on the landscape.</li> <li>• Effectively manage and track costs with daily IAP reporting.</li> <li>• Coordinate with agency leadership/administrators to ensure effective and efficient management of firefighting resources.</li> </ul> Operational objectives: <ul style="list-style-type: none"> <li>• Implement a point protection strategy for current infrastructure on private lands and triage additional infrastructure within fire planning area.</li> <li>• Minimize fire impact on private lands.</li> <li>• Evaluate current fire conditions, identify/utilize features that could lead to fire growth, and validate strategic indirect (new/historical) control lines.</li> <li>• Develop a long-term strategic plan for suppression of the incident.</li> <li>• Utilize appropriate tactics for current/future fire environment and predominantly wilderness landscape.</li> </ul>			
<b>5a. Incident Requirements</b> <ul style="list-style-type: none"> <li>• Provide Agency Administrator updates and briefings on incident status.</li> <li>• Firefighting operations will implement tactics that offer the highest probability of success to minimize impacts to the landscape and minimize unnecessary exposure to firefighters.</li> <li>• Incident values are firefighter and public safety, critical infrastructure, private land and natural resources.</li> </ul>			
<b>5b. Leaders Intent</b> <ul style="list-style-type: none"> <li>• <b>Safety:</b> Firefighter, public, boat and aviation safety will be addressed through DRA process.</li> <li>• <b>ISAP:</b> Engage agencies with strategic alignment process, for shared values at risk.</li> <li>• <b>Communication:</b> Keep Agency Administrators and firefighters informed of strategic actions, accomplishments, and challenges.</li> <li>• <b>Operations:</b> Make informed strategic/tactical decisions suppressing the fire in the right geographic locations with the appropriate resources and highest probability of success.</li> <li>• <b>Stakeholders:</b> Collaborate with local partners, officials, and landowners to provide situational updates pertinent to the fire.</li> <li>• <b>Logistics:</b> Provide support ensuring food, water, and shelter for incident responders.</li> <li>• <b>Human Resources:</b> Ensure that all incident personnel are treated with dignity and respect, while having zero tolerance for harassment, alcohol, or illegal drug use.</li> <li>• <b>Public Information:</b> Provide timely and accurate information through media outlets, briefings, and social platforms as needed.</li> <li>• <b>Finance:</b> Monitor and communicate incident cost associated with meeting incident objectives.</li> <li>• <b>Planning:</b> Provide incident documentation, resource tracking, and meeting management.</li> </ul>			
<b>6. Weather Forecast &amp; General Safety Message for Period – See Attached</b>			
<b>7. Attachments (mark if attached)</b>			
<input checked="" type="checkbox"/> Organization List - ICS 203	<input checked="" type="checkbox"/> Weather Forecast	<input checked="" type="checkbox"/> Safety Message	
<input checked="" type="checkbox"/> Div. Assignment Lists - ICS204	<input checked="" type="checkbox"/> Fire Behavior Forecast	<input type="checkbox"/> Medical Emergency Com Plan	
<input checked="" type="checkbox"/> Communications Plan - ICS 205	<input checked="" type="checkbox"/> Incident Map	<input type="checkbox"/>	
<input checked="" type="checkbox"/> Medical Plan - ICS 206	<input checked="" type="checkbox"/> Air Operations - ICS 220	<input type="checkbox"/>	
<b>9. Prepared by</b> Aileen Nichols	<b>9. Approved by (Incident Commander)</b> <i>Brian Gales</i>		

<b>ORGANIZATION ASSIGNMENT LIST</b>	
1. Incident Name <b>Pioneer</b>	
2. Date <b>June 12, 2024</b>	3. Time <b>1830</b>
4. Operational Period <b>June 13, 2024 0600-2200</b>	
Position	Name
<b>NWIMT 13 LWD 6/24/2024</b>	
5. Incident Commander and Staff	
Incident Commander	<b>Brian Gales (O-8.1)</b>
Deputy Incident Commander	<b>Eric Riener (O-8.2)</b>
Liaison Officer	<b>Bill Neckels (O-8.3)</b>
ISAP	<b>Robert Burnside (O-14)</b>
Information Officer	<b>Eric Waters (O-8.5)</b>
Safety Officer	<b>Ray Hershey (O-8.4)</b>
6. Agency/Organization Representative(s):	
USFS Oak/Wen Agency Administrator	<b>Kari Grover-Wier</b>
USFS Oak/Wen Agency Administrator - †	<b>Paul Willard</b>
DNR Agency Administrator	<b>Larry Leach</b>
DNR Deputy Agency Administrator	<b>Wyatt Leighton</b>
LEAD READ	<b>Brigitte Ranne</b>
REAF - †	<b>Hector Rodriguez</b>
7. Planning Section	
Plans Chief	<b>Aileen Nichols (O-8.14)</b>
Resources Unit	<b>Meredith Butcher (O-8.15)</b>
Status Check-In/ Demob Unit	<b>Laura Backlund (O-8.20)</b>
Situation Unit	<b>Laurie Bergvall (O-8.18)</b>
Fire Behavior Analyst	<b>Dean Warner (O-8.19)</b>
Incident Meteorologist	<b>Trent Smith (O-58)</b>
GIS Specialist	<b>Kayla Fermin (O-8.16)</b>
GIS Specialist	<b>Austin Lewandowski (O-50)</b>
Computer Specialist	<b>Dave Johnson (O-8.17)</b>
Computer Specialist	<b>George Jenkins (O-64)</b>
8. Logistics Section	
Logistics Chief	<b>Bryan Swanberg (O-8.22)</b>
Deputy Logistics Chief	<b>Cindy Preston (O-8.21)</b>
Deputy Logistics Chief	<b>Dave Willis (O-8.23)</b>
Supply Unit Leader	<b>Jon Byerly (O-8.25)</b>
Ordering Manager	<b>Robert Yarnall (O-8.30)</b>
Communications Unit Ldr - †	<b>Bruce Hanna (O-8.27)</b>
Incident Comm Mgr	<b>Trina Contreras (O-8.31)</b>
Com Tech	<b>Brian Wolfenburger (O-8.32)</b>
Food Unit Leader	<b>Pat Young (O-8.26)</b>
Facilities Unit Leader	<b>Keith Yonaka (O-8.24)</b>
Medical Unit Leader	<b>James Brown (O-8.28)</b>
Ground Support Unit	<b>William Braddy (O-8.29)</b>
Receiving/Distribution Mgr	<b>Karl Peterson (O-31)</b>
Base Camp Manager	<b>Carl Schilter (O-12)</b>
Security Manager	<b>Chris Dodds (O-11)</b>
Equipment Manager	<b>Charlotte Carmichael (O-23)</b>

9. Operations Section		
Operations (Field)	<b>John Spencer (O-8.6)</b> <b>Whitney Machado - † (O-8.41)</b>	
Operations (Planning)	<b>Tom Hall (O-13)</b>	
a. Branch I		
Branch Director		<b>Matt James (O-15)</b>
Division Supervisor	<b>A</b>	<b>Erik Thorp ( O-53)</b> <b>Chris Carr - † (O-54)</b>
Division Supervisor	<b>Z</b>	<b>Robert Boles (O-8.13)</b> <b>Pat Chism - † (O-26)</b>
Group Supervisor	<b>Structure</b>	<b>Charlie Cronk (O-24)</b> <b>Chris Ramiskey - † (O-27)</b>
b. Branch II		
Branch Director		<b>Spencer Gregory (O-16)</b>
Division Supervisor	<b>S</b>	<b>Annalee Graves (O-8.10)</b>
Group Supervisor	<b>Roads</b>	<b>Jesse Stone (O-8.12)</b> <b>Aaron Bruning - †</b>
c.		
d. Air Operations Branch		
Air Operations	<b>Nancy Barker (O-8.8)</b> <b>Callan Wilkins - † (O-17)</b>	
Air Support Group	<b>Jesse Machado - † (O-38)</b>	
Helibase Manager	<b>David Kessler - † (O-39)</b>	
10. Finance Section		
Finance Chief	<b>Veronika Klukas (O-8.33)</b>	
Deputy Finance Chief	<b>Paula James (O-8.34)</b>	
Cost Unit - Virtual	<b>Lori Price (O-8.35)</b>	
Time Unit	<b>Angie Chapman (O-8.36)</b>	
Personnel Time Recorder	<b>Heather Fitzpatrick (O-8.38)</b>	
Proc Unit Leader	<b>Eric Soto (O-8.37)</b>	
COMPS/CLAIMS	<b>Laurette Gaylord (O-45)</b>	
Incident Cont. Project Insp	<b>Stan Zazado (O-8.39)</b>	
In-Box Manager	<b>Emily Cohn (O-46)</b>	
<b>PREPARED BY: Meredith Butcher</b>		



# Fire Weather Forecast



**FORECAST NO:** 01  
**PREDICTION FOR:** 24 Hr Shift  
**SHIFT DATE:** Thursday 6/13/2024  
**TIME AND DATE ISSUED:** 6/12/2024 1900 hrs

**INCIDENT:** Pioneer Fire

**SIGNED:** Trent Smith *Trent A. Smith*  
Incident Meteorologist (IMET)

**Discussion:**

A ridge of high pressure will be over the fire today allowing for some warming and drying. A cold front will be moving through the fire location late this evening causing a shift and increase in the winds. Temperatures will be cooler on Friday with slightly higher humidity readings, but the winds will remain gusty throughout the day.

**WEATHER FORECAST FOR TODAY:**

**SKY/WEATHER:** Partly cloudy becoming mostly cloudy in the afternoon.

**Max Temperature:** Lower Elevation 78 to 83 and 74 to 79 mid-slopes.

**Min RH:** 17 to 22 percent.

**20 ft WINDS:**

**Lower Valleys:** Terrain driven winds 3 to 8 mph becoming west 5 to 10 mph gusts to 15 mph in the afternoon.

**Mid-slopes and Ridges:** Terrain driven winds 3 to 8 mph becoming South 5 to 10 mph gusts to 15 mph in the afternoon.

**HAINES INDEX:** 4 Low.

**TRANSPORT WINDS:** S 10 mph.

**INVERSION:** 500 ft inversion lifting to 6000 ft by afternoon.

**TONIGHT:**

**SKY/WEATHER:** Mostly cloudy becoming mostly clear after midnight

**Min Temperature:** 49 to 54.

**Max RH:** 43 to 48 percent, except 50 to 60 percent lower elevations.

**20 ft Wind**

**Valleys/Lower Slopes:** West 5 to 10 mph.

**Mid-Slopes and Ridges:** South 5 to 10 mph becoming west 8 to 13 mph with gusts to 20 mph after midnight.

**INVERSION:** Developing after 2000 hrs near 1500 ft.

**FRIDAY:**

**SKY/WEATHER:** Partly cloudy becoming mostly cloudy in the afternoon.

**Max Temperature:** High 68 to 73 lower elevations and 68 to 73 upper slopes/ridges.

**Min RH:** 24 to 29 percent.

**20 ft WINDS:**

**Lower Valleys:** West 5 to 10 mph. Gusts to 25 mph in the afternoon.

**Mid-slopes and Ridges:** West 10 to 15 mph gusts to 25 mph.

**HAINES INDEX:** 3 Very Low.

**TRANSPORT WINDS:** W 21 mph.

Weather observations can be texted to 406-360-6330 or emailed to trent.smith@noaa.gov

## Fire Behavior Forecast # 2

<b>Name of Incident:</b> Pioneer Fire WA-SES-000173	<b>Administrative Unit:</b> SE Region DNR / Okanagan-Wenatchee NF
<b>Date &amp; Time Issued:</b> 1900 – 6/12/2024	<b>Operational Period:</b> Day 6/13/2024

<b>FBAN:</b> Dean Warner	<b>Signed:</b>
-----------------------------	----------------

**Weather Summary** - See attached Spot Weather Forecast.  
Sunny and dry with seasonal average temperatures, evening clouds.

### Fire Behavior Summary

<b>General –</b> Max. spot distance: <b>0.25 mi.</b> Probability of Ignition: <b>50%</b> Haines Index: <b>4 (low)</b> LAL: 1 ERC – Y: <b>43 (78 percentile)</b>	<b>FUEL MODEL</b>	<b>Maximum ROS</b>	<b>Backing ROS</b>	<b>Maximum Flame length</b>	<b>Backing Flame length</b>
	GR2 - Moderate load grass shrub	<b>3 ch/hr</b>	<b>½ ch/hr</b>	<b>1 feet</b>	<b>1 feet</b>
	SH2 - Moderate load shrub	<b>2 ch/hr</b>	<b>½ ch/hr</b>	<b>2 feet</b>	<b>1 feet</b>
	TU5 – Very high load timber shrub	<b>8 ch/hr</b>	<b>½ ch/hr</b>	<b>7 feet</b>	<b>2 feet</b>
	TL8 – Long needle timber litter	<b>6 ch/hr</b>	<b>½ ch/hr</b>	<b>3 feet</b>	<b>1 feet</b>

**General:** The fire will remain active today. Expect fire to move up lake, down lake, and uphill on the north side of the lake. Down lake, fire has established in Rex Creek and will continue to move SE but impacts to Rattlesnake Creek are not expected during this shift. Up lake, the fire will back down into Cascade Creek creating potential for a slope reversal during today’s shift. Fire will move uphill to the NE and lose energy around mid-slope where fuels tend to be green and sparse. Spotting has been observed up to one quarter mile down range.

**Fuels:** The fire is burning in the old Rex Creek burn scar from 2001. This 23 year old fire scar has left behind a mosaic of fuels including a moderate load of heavy fuel, which is dry enough to sustain fire spread. Timber stringers in valleys and draws tend to contain concentrations of available fuel. Rock outcrops can sever the fuel continuity but dry grass and sparse dead and downed material in rocky areas can still maintain fire movement.

**Topography:** This fire lies on the north slopes of the lake providing a very dry southwest aspect. Steep rugged terrain dominates the fire environment. Rolling material and short upslope runs will pose a significant safety risk. Several natural barriers in the form of rock outcrops and scree slopes are present in the fire area. Evaluate natural barriers for absolute lack of fuel prior to utilizing as a containment feature. Expect slope reversals to be more dramatic than usual as this type of fire movement will present in severe contrast from backing ROS.

**ERC:** Due to the time of year, Energy Release Component values remain below the 90<sup>th</sup> percentile. The dry aspect, lake winds, and steep slopes offer ample opportunity for this fire to remain active.

### Air Ops/Smoke Dispersion

Smoke from active fire may impact visibility for air operations; otherwise no impacts are expected.

### Safety

Standard Order Number 2 is emphasized today: **Know what your fire is doing at all times.** Pay attention to radio traffic, reports from other Divisions, and Air Resources. Observe the situation personally, or use scouts. The threat for active fire movement is real and remains high.

<b>DIVISION ASSIGNMENT LIST</b>			1. Branch <b>I</b>		2. Division <b>A</b>	
3. Incident Name <b>Pioneer</b>			4. Operational Period Date: <b>06/13/2024</b> Time: <b>0600-2200</b>			
5. Operations Personnel						
Operations Chief		<b>John Spencer Whitney Machado - t</b>		Branch Director		<b>Matt James</b>
Safety Officer		<b>Ray Hershey</b>		Division Supervisor		<b>Eric Thorp Chris Carr - t</b>
6. Resources Assigned this Period						
Strike Team/Task Force/Resource Designator		Leader	# Persons	LWD	Drop Off PT./Time	Pick Up PT./Time
<b>1</b>	<b>A-23 Boise Helitack</b>	<b>Jean-Luke Ankney</b>	<b>13</b>			
<b>2</b>						
<b>3</b>	<b>O-49 TFLD</b>	<b>Jeremy Zemke</b>	<b>1</b>			
<b>4</b>	<b>O-52 TFLD - t</b>	<b>Dante Ybarra</b>	<b>1</b>			
<b>5</b>						
<b>6</b>	<b>O-60 SOFC - t</b>	<b>Jeremiah Maghan</b>	<b>1</b>			
<b>7</b>						
<b>8</b>						
<b>9</b>						
<b>10</b>						
<b>11</b>						
<b>12</b>						
<b>13</b>						
<b>14</b>						
<b>15</b>						
<b>16</b>						
<b>17</b>						
<b>18</b>						
<b>19</b>						
<b>20</b>						
		<b>Meal count</b>	<b>16</b>			
7. Control Operations: <b>Task: Contain fire spread to the northwest where terrain and fuels allow for high probability of success. Assess fire perimeter progression to the north and east at higher elevations.</b> <b>Purpose: To slow fire progression, provide time for suppression tactics, and prep around critical values.</b> <b>End state: Minimize fire impacts to critical values including private inholdings and Forest Service infrastructure.</b>						
8. Special Instructions:						
9. Division/Group Communication Summary <b>See Communications Plan</b>						
Prepared by (Resource Unit Ldr) <i>Meredith Butcher</i>			Approved by (Planning Sect. Ch.) <i>Aileen Nichols</i>		Date <b>06/12/2024</b>	Time <b>2000</b>

<b>DIVISION ASSIGNMENT LIST</b>			1. Branch <b>I</b>		2. Division <b>Z</b>	
3. Incident Name <b>Pioneer</b>			4. Operational Period Date: <b>06/13/2024</b> Time: <b>0600-2200</b>			
5. Operations Personnel						
Operations Chief		<b>John Spencer Whitney Machado - t</b>		Branch Director		<b>Matt James</b>
Safety Officer		<b>Ray Hershey</b>		Division Supervisor		<b>Robert Boles Pat Chism - t</b>
6. Resources Assigned this Period						
Strike Team/Task Force/Resource Designator		Leader	# Persons	LWD	Drop Off PT./Time	Pick Up PT./Time
<b>1</b>	<b>C-3 CRW1 Baker River IHC</b>	<b>Chicks</b>	<b>23</b>	<b>6/22</b>		
<b>2</b>	<b>C-4 CRW1 LaGrande IHC</b>	<b>Elquezabal</b>	<b>21</b>	<b>6/23</b>		
<b>3</b>						
<b>4</b>	<b>O-48 TFLD</b>	<b>Jeff Coburn</b>	<b>1</b>	<b>6/26</b>		
<b>5</b>						
<b>6</b>	<b>O-51 MEDIC 1</b>	<b>Remington Becker</b>	<b>1</b>	<b>6/26</b>		
<b>7</b>						
<b>8</b>	<b>O-20 SOFR</b>	<b>Jeff Higen</b>	<b>1</b>	<b>6/26</b>		
<b>9</b>						
<b>10</b>						
<b>11</b>						
<b>12</b>						
<b>13</b>						
<b>14</b>						
<b>15</b>						
<b>16</b>						
<b>17</b>						
<b>18</b>						
<b>19</b>						
<b>20</b>						
		<b>Meal count</b>	<b>47</b>			
7. Control Operations: <b>Task: Contain fire spread to the southwest where terrain and fuels allow for high probability of success. Assess fire perimeter progression to the west/southwest at higher elevations.</b> <b>Purpose: To slow fire progression, provide time for suppression tactics, and prep around critical values.</b> <b>End state: Minimize fire impacts to critical values including private inholdings and Forest Service infrastructure.</b>						
8. Special Instructions:  24, 48, 72 hour planning/logistical support will be paramount to our success.						
9. Division/Group Communication Summary <b>See Communications Plan</b>						
Prepared by (Resource Unit Ldr) <i>Meredith Butcher</i>		Approved by (Planning Sect. Ch.) <i>Aileen Nichols</i>		Date <b>06/12/2024</b>		Time <b>2000</b>



<b>DIVISION ASSIGNMENT LIST</b>			1. Branch <b>I</b>		2. Group <b>Structure</b>	
3. Incident Name <b>Pioneer</b>			4. Operational Period Date: <b>06/13/2024</b> Time: <b>0600-2200</b>			
5. Operations Personnel						
Operations Chief		<b>John Spencer Whitney Machado - t</b>		Branch Director		<b>Matt James</b>
Safety Officer		<b>Ray Hershey</b>		Division Supervisor		<b>Charlie Cronk Chris Ramiskey - t</b>
6. Resources Assigned this Period						
Strike Team/Task Force/Resource Designator		Leader	# Persons	LWD	Drop Off PT./Time	Pick Up PT./Time
<b>1</b>	<b>C-1 CRW2 DNR Crew 411</b>	<b>Lyle</b>	<b>16</b>			
<b>2</b>	<b>C-2 CR2I Wenatchee River C74</b>	<b>Marquart</b>	<b>15</b>	<b>6/24</b>		
<b>3</b>						
<b>4</b>	<b>O-41 WFM1 Eagle Cap</b>	<b>Gabe Hale</b>	<b>10</b>	<b>6/25</b>		
<b>5</b>						
<b>6</b>	<b>O-50 TFLD Boat Coordinator</b>	<b>Todd Olson</b>	<b>1</b>	<b>6/26</b>		
<b>7</b>	<b>O-20 TFLD-t Boat Coordinator</b>	<b>Katy Giddings</b>	<b>1</b>			
<b>8</b>						
<b>9</b>	<b>O-43 REMS 1</b>	<b>Caitlin Lucia</b>	<b>4</b>	<b>6/25</b>		
<b>10</b>						
<b>11</b>						
<b>12</b>						
<b>13</b>						
<b>14</b>						
<b>15</b>						
<b>16</b>						
<b>17</b>						
<b>18</b>						
<b>19</b>						
<b>20</b>						
		<b>Meal count</b>	<b>47</b>			
7. Control Operations: <b>Task: Point protection at inholdings and trail system infrastructure between Prince Creek and Cascade Creek.</b> <b>Purpose: To protect inholdings and infrastructure.</b> <b>End state: Inholdings and infrastructure are secure from fire impacts.</b>						
8. Special Instructions: Boat Coordinator will be located at Fields Point.  24, 48, 72 hour planning/logistical support will be paramount to our success.						
9. Division/Group Communication Summary <b>See Communications Plan</b>						
Prepared by (Resource Unit Ldr) <i>Meredith Butcher</i>		Approved by (Planning Sect. Ch.) <i>Aileen Nichols</i>		Date <b>06/12/2024</b>		Time <b>2000</b>

<b>DIVISION ASSIGNMENT LIST</b>			1. Branch <b>II</b>		2. Division <b>S</b>	
3. Incident Name <b>Pioneer</b>			4. Operational Period Date: <b>06/13/2024</b> Time: <b>0600-2200</b>			
5. Operations Personnel						
Operations Chief		<b>John Spencer Whitney Machado - t</b>		Branch Director		<b>Spencer Gregory</b>
Safety Officer		<b>Ray Hershey</b>		Division Supervisor		<b>Anna Graves</b>
6. Resources Assigned this Period						
Strike Team/Task Force/Resource Designator		Leader	# Persons	LWD	Drop Off PT./Time	Pick Up PT./Time
1						
2						
3						
4						
5						
6						
7						
8						
9						
10						
11						
12						
13						
14						
15						
16						
17						
18						
19						
20						
		<b>Meal count</b>				
7. Control Operations: <b>Task: Scout division S for secondary control line opportunities (8200 Rd, Coyote Ridge, Nelson Butte and Gold Creek 600 Rd).</b>  <b>Purpose: To identify and inventory historic control lines from past fire history.</b>  <b>End state: Potential control lines are identified in alignment with suppression strategy.</b>						
8. Special Instructions:  24, 48, 72 hour planning/logistical support will be paramount to our success.  UTV on division.						
9. Division/Group Communication Summary  <b>See Communications Plan</b>						
Prepared by (Resource Unit Ldr) <i>Meredith Butcher</i>			Approved by (Planning Sect. Ch.) <i>Aileen Nichols</i>		Date <b>06/12/2024</b>	Time <b>2000</b>

<b>DIVISION ASSIGNMENT LIST</b>			1. Branch <b>II</b>		2. Group <b>Roads</b>	
3. Incident Name <b>Pioneer</b>			4. Operational Period Date: <b>06/13/2024</b> Time: <b>0600-2200</b>			
5. Operations Personnel						
Operations Chief		<b>John Spencer Whitney Machado - t</b>		Branch Director		<b>Spencer Gregory</b>
Safety Officer		<b>Ray Hershey</b>		Division Supervisor		<b>Jesse Stone Aaron Bruning - t</b>
6. Resources Assigned this Period						
Strike Team/Task Force/Resource Designator		Leader	# Persons	LWD	Drop Off PT./Time	Pick Up PT./Time
1						
2						
3						
4						
5						
6						
7						
8						
9						
10						
11						
12						
13						
14						
15						
16						
17						
18						
19						
20						
		<b>Meal count</b>				
7. Control Operations: <b>Task: Scout and prep 8200 Rd (Grade Creek Rd) to be utilized for mobilization of division S resources.</b> <b>Purpose: To open the 8200 Rd for use.</b> <b>End state: 8200 Rd is accessible for fire resources.</b>						
8. Special Instructions:  24, 48, 72 hour planning/logistical support will be paramount to our success.						
9. Division/Group Communication Summary <b>See Communications Plan</b>						
Prepared by (Resource Unit Ldr) <i>Meredith Butcher</i>			Approved by (Planning Sect. Ch.) <i>Aileen Nichols</i>		Date <b>06/12/2024</b>	Time <b>2000</b>

AIR OPERATIONS SUMMARY ICS-220										Time Prepared		Date Prepared		Prepared By			
Incident Name / Number		Sunrise	Sunset	Airport	Pumpkin	Shutdown		Operational Period - Date		Operational Period - Time		Callan Wilkins - AOBDr		0600-2230			
Pioneer / WA-SES-000173		05:00	20:59	S10	21:29	21:00		6/13/2024		6/12/2024							
<b>General Remarks, Safety Notes, Hazards, Air Operations Special Equipment, etc.</b> *Order All Aircraft through CWICC Dispatch (509-884-3473) or on Command to Helibase. *Sanitize Buckets before changing water sources. *Clear drop area/line before initiating drop sequence. *Be cognizant of all overhead and environmental hazards while working with Aircraft. *All GPS is to be collected in DMM *Aviation daily cost to: 2024.pioneer.finance@firenet.gov										<b>Helibase Information</b> Pioneer Helibase Location 47 51.96 N 119 56.56 W Phone 509-560-9484		TFR 4/5504 Surface to 10,000' MSL H1   48 10.813N / 120 31.914W 25 Mile   47 59.212N / 120 16.526W Lucerne   48 12.162N / 120 35.447W		<b>Medivac Ship Information</b> Short Haul Name: N-407RL Phone: 406-212-4515 Make/Model: 407 Location: 25 Mile/Lake Chelan HB Request Procedure for These Aircraft: Communications on Command, Order through Helibase/CWICC, 509-560-9484		<b>EQUIPMENT/SUPPLIES</b> Com Trailer E20	
Incident Frequencies	RX	Tone	TX	Tone	FM/IFM	Position	Name	Phone									
Air to Air Primary (A-8)	123.4000		123.4000		AM	AOBD	Nancy Barker	253-312-4301									
Air to Air Secondary (A-9)	118.2750		118.2750		AM	AOBD-T	Callan Wilkins	509-899-3876									
A/G Primary (A-10)	169.1500		169.1500		FM	ASGS	Jesse Machado	509-881-9393									
A/G Secondary (A-11)	168.4000		168.4000		FM	HEBM-T	David Kessler	509-560-9484									
AIR GUARD	168.6250		168.6250	110.9	FM												
VMED 29	155.3475	156.7	155.3475	156.7	FM												
						UAO	Cory Dolberry	509-668-2801									
HELICOPTERS - Lake Chelan																	
FAA #	TYPE	Make/Model	Helibase	Start	Avail	Remarks	FAA #	TYPE	Make/Model	Airport	Start	Avail	Remarks				
HB-16FH	1	UH-60	Chelan	0800	0900	BKT/LL	H-407RL	3	407	Chelan	0800	0900	Short-haul				
HB-17FH	1	UH-60A	Chelan	0800	0900	BKT/LL	H-205TK	2	Bell 205A	Chelan	0800	0900	Rapps				
HB-161KA	1	K-1200	Chelan	0800	0900	BKT/LL											
H-304HA	2	Bell 205A	LKV		1200	Helitack											
HELICOPTERS - GACC Prepo																	
FIXED WING AA/HLCO																	
Call Sign	Type	Make/Model	Base	Start	Avail	Remarks	FAA #	Call Sign	Make/Model	Base	Start	Avail	Remarks				
UR-41	4		DIV S	0600	2200	IR											

# INCIDENT RADIO COMMUNICATIONS PLAN (ICS 205)

## Controlled Unclassified Information//Basic

1. Incident Name:		2. Date/Time Prepared:			3. Operational Period:						
PIONEER		Date: 06/12/2024 Time: 18:00			Date/Time From: 06/13/2024 0600 Date/Time To: 06/13/2024 2200						
<b>4. Basic Radio Channel Use:</b>											
Zone Group	Ch #	Function	Channel Name/Trunked Radio System Talkgroup	Assignment	RX Freq	RX Tone/NAC	TX Freq	TX Tone/NAC	Mode (A, D, or M)	Remarks	
	1	COMMAND	SLIDE	ALL DIVS	173.0500	146.2	164.9125	141.3	A	SLIDE MT (SE OF FIRE)	
	2	COMMAND	OLD MAID	ALL DIVS	173.0500	146.2	164.9125	136.5	A	OLD MAID MT (N OF FIRE)	
	3	TACTICAL-1	FS TAC	DIVS A&Z	168.2000	000.0	168.2000	000.0	A		
	4	TACTICAL-2	WEN-PROJ	DIVS S & ROADS	168.6750	000.0	168.6750	000.0	A		
	5	LOCAL RPTR	MCGREGOR		166.7500	000.0	165.9750	131.8	A	BACK-UP REPEATER	
	6	ROAD TRAFFIC	TRAFFIC	ALL DIVS	159.5400	000.0	159.5400	000.0	A	TRAFFIC	
	7	TACTICAL	DNR COMMON	TACTICAL	151.4150	103.5	151.4150	103.5	A		
	8	LOCAL RPTR	DNR CHELAN		159.2250	156.7	151.4750	156.7	A	BACK-UP REPEATER	
	9	BLANK							A		
	10	BLANK							A		
	11	AIR-GROUND	A/G PRI	AIR PRIMARY	169.1500	000.0	169.1500	000.0	A		
	12	AIR-GROUND	A/G SEC	AIR SECONDARY	168.4000	000.0	168.4000	000.0	A		
	13	BLANK							A		
	14	BLANK							A		
	15	AIR MEDICAL	VMED 29	AIR MEDICAL	155.3475	156.7	155.3475	156.7	A	EMS AIR COORDINATION	
	16	AIR TO GROUND	AIRGUARD	AIRGUARD	168.6250	000.0	168.6250	110.9	A	EMERGENCY AIRCRAFT CONTACT	
<b>5. Special Instructions:</b>											
<b>6. Prepared By COML</b>								Name: Bruce Hanna Signature: /s/ Bruce Hanna			
<b>ICS 205</b>								IAP Page Date/Time: 06/12/2024 19:00			

## LOGISTICS

**Shower Hours:**

Open: 0500 - 1200 & 1400 - 2200

**Kitchen Hours:**

Breakfast: 0530 - 0900

Dinner: 1800 - 2100

## PIONEER CONTACT LIST

<b>Public Information:</b>	509-210-2926
<b>Communications:</b>	208-891-7870
<b>Check In/Demob:</b>	541-806-0285
<b>Medical:</b>	360-775-5413
<b>Finance:</b>	Equipment 208-891-6877 & TIME 208-891-8036



# OKANOGAN-WENATCHEE NATIONAL FOREST

## Resource Guidelines for Uplake Fire Suppression

**Fire: Pioneer**

**Location: Pioneer Creek, North shore of Lake Chelan**

**Date: 6/11/2024**

### Resource Advisors

Lead READ: Brigitte Ranne 509-663-6118, [brigitte.ranne@usda.gov](mailto:brigitte.ranne@usda.gov)

REAF trainee: Hector Rodriguez

### **HUMAN SAFETY IS THE HIGHEST PRIORITY FOR EVERY EMERGENCY RESPONSE ACTION**

#### *MIST for Spike Camp and Lucerne Forward Operating Base Management*

- Employ minimum impact suppression tactics (MIST) where feasible, especially in remote or sensitive areas.
- If spike camps are necessary, use existing, or previously impacted campsites where available. If existing campsites are not available; use your local resource advisor to help identify the most resilient sites in rocky or sandy soils. Avoid camping in wet meadows, along streams, or on lake shores.
- In small spike camp situations (not Lucerne), individuals should use the "cat-hole" method of disposing of human waste. Toilet seats should be located a minimum of 200 feet from water sources. Holes should be dug 6-8 inches deep.
- Store food properly so that it is not accessible to wildlife. Consider hanging food in trees at least 15 feet off the ground and 5 feet from the trunk of the tree, or store food in sealable containers. Store food away from the campsite (300 feet is ideal) to reduce the risk of human and bear (and rodent!) conflicts.
- Do not let garbage and food scraps accumulate in camp. All garbage and food scraps need to be removed from the camp ASAP and before leaving the site.
- Minimize disturbance to land in preparing bedding and campfire sites. Do not clear vegetation, trench, or excavate a flat spot to create bedding sites.
- Do not use nails in trees. Don't construct camp furniture.
- If a campfire is built for warmth in the evening, build either a pit or mound fire. Use dead and down firewood. Use small diameter wood that burns down more cleanly. Don't burn plastics or aluminum - pack it out with the rest of the camp garbage.



### *Dipping and Drafting*

- No cross-dipping between water bodies. All buckets or snorkels should be cleaned, inspected, and dried in the sun if they must be used between lakes. Dipping in small lakes must be pre-approved by the READ or AA.
- When drafting, use already disturbed areas for stream access (road crossings, dispersed campsites) to reduce the need for riparian vegetation clearing.
- Use screens (3/32" inch) for all pumping operations.
- Use containment pads and basins under pumps and fuel cans. Ensure a spill kit is present with every operating pump.

### *Invasive Species*

- The fire is burning within an infestation of common crupina, a WA State Class A Noxious weed. Prevent spread of crupina off site – plan to wash hose and other equipment. Request fire fighters brush boots before boarding boat.
- Inspect slings and remove all plant/soil material prior to use.
- Ensure all camps, staging areas, helispots and cargo areas are free of invasive plants to prevent spread to un-infested areas.

### *Fisheries /Aquatic Recommendations*

- If trees must be felled in riparian areas for suppression or safety reasons, fell them toward streams where possible and minimize bucking where possible.

## **Cultural Resources**

- If cultural resources are discovered during suppression activities, leave on site and notify READ.



Crupina Seed

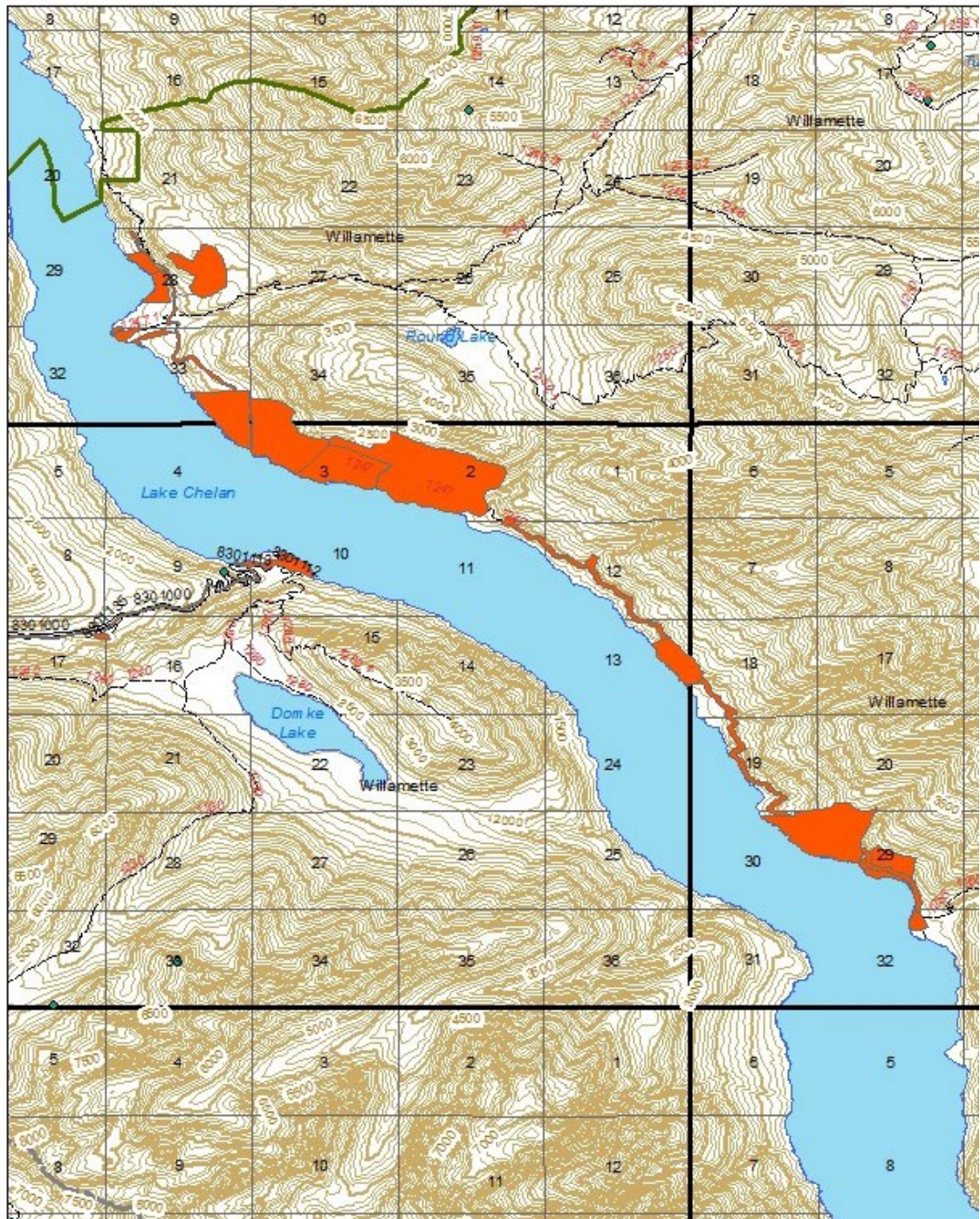


USDA  
Forest  
Service

Pacific  
Northwest  
Region

Okanogan-  
Wenatchee  
National Forest





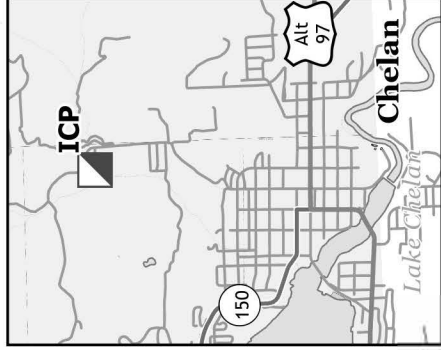
Location of common crupina infestations (north shore of Lake Chelan only). The infestation shown at Lucerne is knapweed.



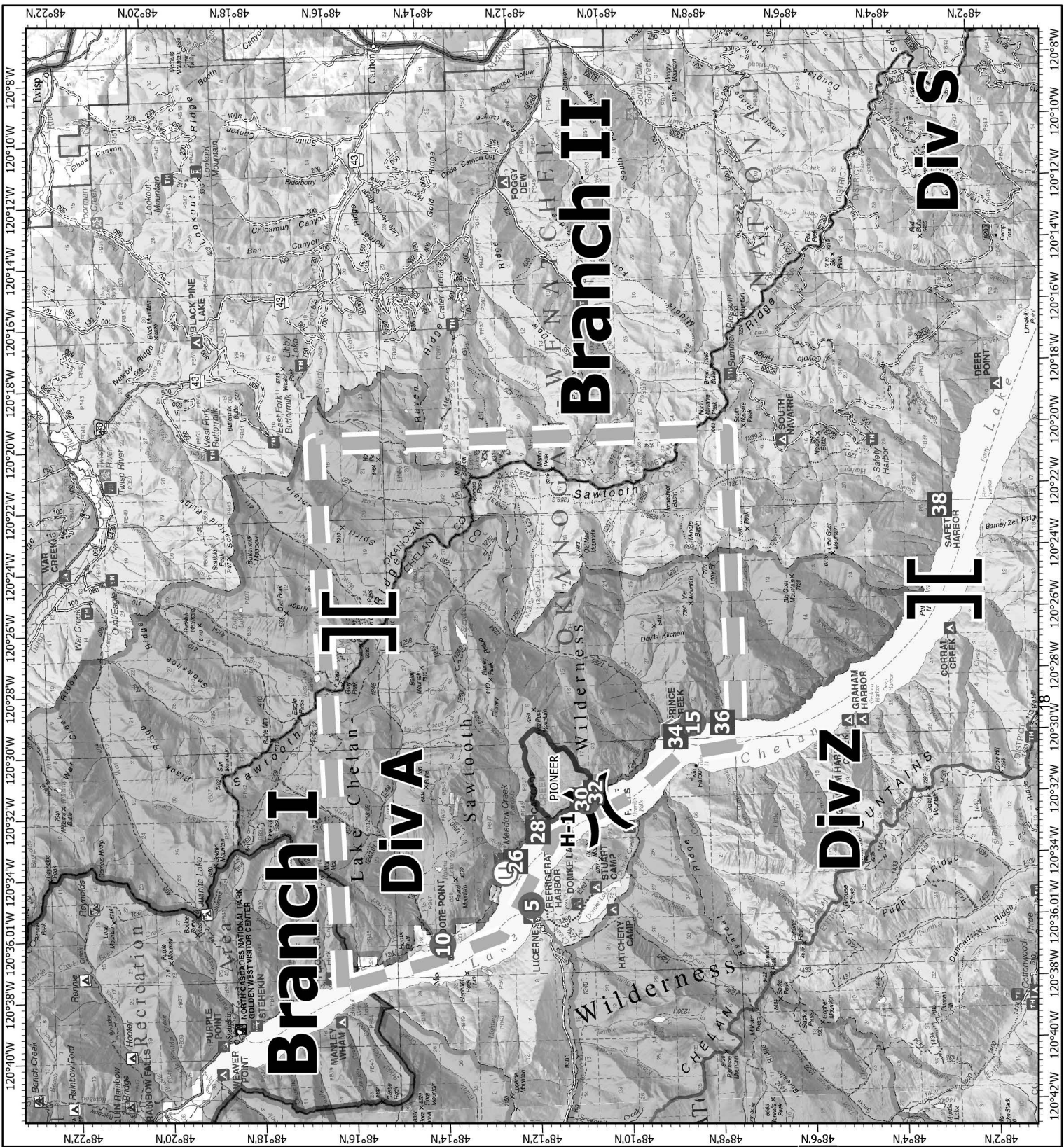


**Pioneer**  
**WA-SES-000173**  
**06/13/2024 16hr**  
 1468 acres on 6/12/2024 @ 1151

ICP: Chelan Rodeo Grounds  
 1099 N Bradley St.  
 Chelan, WA 98816



- Helispot
- ⊕ Unimproved Landing Area
- X Division Break
- || Branch Break
- Drop Point
- Value at Risk
- Landmark
- H— Completed Hand Line
- M— Completed Mixed Construction Line
- ▬ Temporary Flight Restriction
- ▬ Wildfire Daily Fire Perimeter



# DIVISION PLANNING WORKSHEET

NEXT OPERATIONAL DATE

DIVISION/GROUP

NAME OF DIVISION/GROUP

ROLL OVER ASSIGNED RESOURCES

EXCESS RESOURCES

CORRECTION TO 204

E or C NUMBER	RESOURCE DESIGNATOR	LEADER	NO. PERSONS	COMMENTS

OPERATIONAL PROJECTION (Task, Purpose, End State) 24 hrs

OPERATIONAL PROJECTION (Task, Purpose, End State) 48 hrs

OPERATIONAL PROJECTION (Task, Purpose, End State) 72 hrs

REQUEST FOR ADDITIONAL RESOURCES

NUMBER	TYPE	RESOURCE KIND	DATE NEEDED

**Critical Needs:** If your resource request is critical, describe the mission and the duration resources are needed.

•



# MEDICAL PLAN (206 WF)

1. Incident/Project Name				2. Operational Period			
<b>Pioneer Fire</b>				Date/Time: <b>06/13/24 0600-2200</b>			
<b>3. Ambulance Services</b>							
Name	Complete Address	Phone	Advanced Life Support (ALS)				
			Yes	No			
Lake Chelan EMS	Chelan, WA	911	X				
<b>4. Air Ambulance Services</b>							
Name	Phone	Type of Aircraft & Capability					
Life Flight- Brewster	1-800-232-0911 911	Rotor, ALS, 24 hr					
Airlift NW- Wenatchee	1-800-426-2430 911	Rotor, ALS, 24 hr					
Wenatchee Short Haul- Chelan Airport	Order Through CWICC	Rotor, BLS, Daytime, Short haul					
Snohawk 10- Snohomish	1-800-258-5990 911	Rotor, ALS, Daytime, Hoist					
Spokane County Hoist-Spokane	1-509-532-8930 911	Rotor, ALS, 24 hr, Hoist Daytime only					
<b>5. Hospitals</b>							
Name	Degrees Decimal Minutes	Travel Time From Fire		Phone	Helipad		Level of Care
		Air	Boat		Yes	No	
Lake Chelan Health 110 S. Apple Blossom Drive Chelan WA	Lat: 47° 50' 20 N	30 Min	3 Hr	509-683-2474		X	Level IV Trauma
	Long: 119° 59' 20 W						
Central Washington Hospital 1201 S. Miller Wenatchee WA	Lat: 47° 24. 43 N	1 Hr	4 Hr	509-433-3115	X		Level II Trauma
	Long: 120° 19. 28 W						
Harborview Medical Center 325 9 <sup>th</sup> Ave Seattle WA	Lat: 47° 36. 24 N	1.5 Hr	6 Hr	206-744-4025	X		Level I Trauma Burn Center
	Long: 122° 19. 45 W						
<b>ICP</b>	<b>EMS Responders &amp; Capability:</b>		<b>James Brown MEDL/Paramedic</b>		360-775-5413		
	Equipment Available on Scene:		ALS Kit, AED, O2, OTC meds				
	Medical Emergency Channel:		Old Maid Repeater				
	ETA for Ambulance to Scene:						
	Air:		NA				
	Ground:		15 Min				
	Approved Heli-Spot:		NA				
	Lat:		NA				
Long:		NA					
<b>BRANCH I</b>	<b>EMS Responders &amp; Capability:</b>		<b>REMS 1 Caitlin Lucia +3.</b>		443-699-2512		
			<b>MEDIC 1 Remington Becker.</b>		360-903-8612		
	Equipment Available on Scene:		ALS Kit, Defib, O2, Rescue gear				
	Medical Emergency Channel:		Old Maid Repeater				
	ETA for Ambulance to Scene:						
	Air:		2 hr				
	Water/Ground:		3 hr				
	Approved Heli-Spot:						
<b>H-1 48° 10.813 N</b>		<b>LUCERNE</b>		<b>48° 12.1624 N</b>			
<b>120° 31.9242 W</b>				<b>120° 35.4476 W</b>			
<b>BRANCH II</b>	<b>EMS Responders &amp; Capability:</b>						
	Equipment Available on Scene:						
	Medical Emergency Channel:		Old Maid Repeater				
	ETA for Ambulance to Scene:						
	Air:		2 hr				
	Ground:		3 hr				
	Approved Heli-Spot:						
	Lat:						
Long:							
<b>Prepared By (Medical Unit Leader)</b>		<b>Date</b>		<b>Reviewed By (Safety Officer)</b>		<b>Date</b>	
James Brown MEDL		06/12/24		Ray Hershey SOF2		06/12/24	
Signature: <i>James Brown</i>				Signature: <i>Ray Hershey</i>			

# MEDICAL PLAN (ICS 206 WF)

Controlled Unclassified Information//Basic

## Medical Incident Report

**FOR A NON-EMERGENCY INCIDENT, WORK THROUGH CHAIN OF COMMAND TO REPORT AND TRANSPORT INJURED PERSONNEL AS NECESSARY.**

**FOR A MEDICAL EMERGENCY: IDENTIFY ON-SCENE INCIDENT COMMANDER BY NAME AND POSITION AND ANNOUNCE "MEDICAL EMERGENCY" TO INITIATE RESPONSE FROM IMT COMMUNICATIONS/DISPATCH.**

**Use the following items to communicate situation to communications/dispatch.**

**1. CONTACT COMMUNICATIONS / DISPATCH** (Verify correct frequency prior to starting report)

*Ex: "Communications, Div. Alpha. Stand-by for Emergency Traffic."*

**2. INCIDENT STATUS:** Provide incident summary (including number of patients) and command structure.

*Ex: "Communications, I have a Red priority patient, unconscious, struck by a falling tree. Requesting air ambulance to Forest Road 1 at (Lat./Long.) This will be the Trout Meadow Medical, IC is TFLD Jones. EMT Smith is providing medical care."*

Severity of Emergency / Transport Priority	<input type="checkbox"/> <b>RED / PRIORITY 1 Life or limb threatening injury or illness. Evacuation need is IMMEDIATE</b> <i>Ex: Unconscious, difficulty breathing, bleeding severely, 2° – 3° burns more than 4 palm sizes, heat stroke, disoriented.</i> <input type="checkbox"/> <b>YELLOW / PRIORITY 2 Serious Injury or illness. Evacuation may be DELAYED if necessary.</b> <i>Ex: Significant trauma, unable to walk, 2° – 3° burns not more than 1-3 palm sizes.</i> <input type="checkbox"/> <b>GREEN / PRIORITY 3 Minor Injury or illness. Non-Emergency transport</b> <i>Ex: Sprains, strains, minor heat-related illness.</i>	
Nature of Injury or Illness & Mechanism of Injury		<i>Brief Summary of Injury or Illness (Ex: Unconscious, Struck by Falling Tree)</i>
Evacuation Request		<i>Air Ambulance / Short Haul/Hoist Ground Ambulance / Other</i>
Patient Location		<i>Descriptive Location &amp; Lat. / Long. (WGS84)</i>
Incident Name		<i>Geographic Name + Medical (Ex: Trout Meadow Medical)</i>
On-Scene Incident Commander		<i>Name of on-scene IC of Incident within an Incident (Ex: TFLD Jones)</i>
Patient Care		<i>Name of Care Provider (Ex: EMT Smith)</i>

**3. INITIAL PATIENT ASSESSMENT:** Complete this section for each patient as applicable (start with the most severe patient)

Patient Assessment: See IRPG PAGE 106

Treatment:

**4. EVACUATION PLAN:**

Evacuation Location (if different): (Descriptive Location (drop point, intersection, etc.) or Lat. / Long.) Patient's ETA to Evacuation Location:

Helispot / Extraction Site Size and Hazards:

**5. ADDITIONAL RESOURCES / EQUIPMENT NEEDS:**

*Example: Paramedic/EMT, crews, immobilization devices, AED, oxygen, trauma bag, IV/fluid(s), splints, rope rescue, wheeled litter, HAZMAT, extrication*

**6. COMMUNICATIONS: Identify State Air/Ground EMS Frequencies and Hospital Contacts as applicable**

Function	Channel Name/Number	Receive (RX)	Tone/NAC *	Transmit (TX)	Tone/NAC *
COMMAND					
AIR-TO-GRND					
TACTICAL					

**7. CONTINGENCY: Considerations:** If primary options fail, what actions can be implemented in conjunction with primary evacuation method? Be thinking ahead..

**8. ADDITIONAL INFORMATION:** Updates/Changes, etc.

**REMEMBER:** Confirm ETAs of resources ordered. Act according to your level of training. Be Alert. Keep Calm. Think Clearly. Act Decisively.