




## FINANCE MESSAGE

**Finance Email:** [2024.pioneer.finance@firenet.gov](mailto:2024.pioneer.finance@firenet.gov)

**Finance Phones:** *Equipment (208) 891-6877 & TIME (208) 891-8036*

**This incident requires electronic documentation.** Please email your time to the address above. Scanned PDF's please, no.jpeg's. Feel free to call finance for help if needed. Scanners are also available at ICP.

### Required Documents

Overhead, Agency Crews & Cooperators	Contract Resources
<b>Finance docs needed:</b> Resource Order, Manifest, Cooperative Agreement, Casual Hire Form w/ECI# (as applicable)	<b>Finance docs needed:</b> Resource Order, Manifest, Full Contract/Agreement, Certifications ( <i>if required</i> ) Pre-Inspection
<b>Daily:</b> CTRs, Shift Tickets	<b>Daily:</b> CTRs, Shift Tickets, receipts (claims, etc.) <b>NOTE: Document travel times and odometer readings</b>
<b>Demob:</b> Signed OF-288; Signed OF-286	<b>Demob:</b> Contractor Evaluations, Shift Tickets, receipt(s) for Addition/Deductions, Post-Inspection, Signed OF-286
<b>Additional Incident Information:</b>  Cooperators and AD's... <b>PLEASE</b> email us your agreements!	<b>Please call finance regarding issues with your time:</b> O-15 James, Matthew      C-1 Chelan 411 O-16 Gregory, Spencer    O-39 Kessler, David O-24 Cronk, Charlie        O-42 DeLeon Jr., Ernesto Henry O-37 Thorpe, Joe            C-2 Wenatchee River

Incident Name: **Pioneer**  
 Incident Number: **WA-SES-000173**  
 Financial codes:  
 WA DNR – **221-LDW**  
 DOI – **RZ79**  
 USDA – **PNRZ79 (1522)**

**Please make sure you check in using QR code on the front of the IAP and then email your time daily.  
 THANK YOU!!**

CHECK-IN	DEMOB
Please complete the virtual check-in process via the QR code on the front cover.  You are not checked in until you provide the following: <ul style="list-style-type: none"> <li>• Red Cards</li> <li>• Roster/Manifest</li> </ul> <b>Please email documents to:</b> <a href="mailto:2024.pioneer.demob@firenet.gov">2024.pioneer.demob@firenet.gov</a>	<b>Fliers complete the “Air Travel Request” via the QR code on the front cover 72 hours prior to flight date.</b> <ul style="list-style-type: none"> <li>• Return supplies to the Cache</li> <li>• Return radios, antennas, etc., to Communications</li> <li>• Contact Finance about closing out your paperwork</li> </ul> <b>Once the above items have been completed, SCAN the QR code on the front cover and complete the demob questions.</b>

If you have any questions about Check-In or DEMOB please email demob at [2024.pioneer.demob@firenet.gov](mailto:2024.pioneer.demob@firenet.gov) or call 509-661-5372. Please include your request number in the subject line when emailing.

<b>INCIDENT OBJECTIVES</b>	<b>1. Incident Name</b> Pioneer	<b>2. Date</b> June 14, 2024	<b>3. Time</b> 2000
<b>4. Operational Period: 06/15-0600-2200</b>			
<b>5. General Objectives:</b> Implement suppression strategies and objectives for short/long-term planning. <ul style="list-style-type: none"> <li>• Provide for firefighter and public safety through hazard identification and application of a shared risk management process.</li> <li>• Coordinate public information to provide timely updates to agency partners, cooperators, and the public.</li> <li>• Coordinate suppression activities with READs to identify current and future impacts on the landscape.</li> <li>• Effectively manage and track costs with daily IAP reporting.</li> <li>• Coordinate with agency leadership/administrators to ensure effective and efficient management of firefighting resources.</li> <li>• Identify best course of action for firefighter support, both logistically and operationally.</li> </ul> Operational objectives: <ul style="list-style-type: none"> <li>• Implement a point protection strategy to protect private and federal infrastructure.</li> <li>• Triage additional infrastructure within fire planning area to minimize the potential impact to these sites.</li> <li>• Communicate with local law enforcement officials to ensure current and potential evacuations is coordinated.</li> <li>• Evaluate current fire conditions, identify/utilize features that could lead to fire growth, and validate strategic indirect (new/historical) control lines.</li> <li>• Utilize appropriate tactics for current/future fire environment and the predominantly wilderness landscape .</li> <li>• Develop a long-term strategic plan for suppression of the incident.</li> </ul>			
<b>5a. Incident Requirements</b> <ul style="list-style-type: none"> <li>• Provide Agency Administrator updates and briefings on incident status.</li> <li>• Firefighting operations will implement tactics that offer the highest probability of success to minimize impacts to the landscape and minimize unnecessary exposure to firefighters.</li> <li>• Incident values are firefighter and public safety, critical infrastructure, private land and natural resources.</li> </ul>			
<b>5b. Leaders Intent</b> <ul style="list-style-type: none"> <li>• <b>Safety:</b> Firefighter, public, boat and aviation safety will be addressed through DRA process.</li> <li>• <b>ISAP:</b> Engage agencies with strategic alignment process, for shared values at risk.</li> <li>• <b>Communication:</b> Keep Agency Administrators and firefighters informed of strategic actions, accomplishments, and challenges.</li> <li>• <b>Operations:</b> Make informed strategic/tactical decisions suppressing the fire in the right geographic locations with the appropriate resources and highest probability of success.</li> <li>• <b>Stakeholders:</b> Collaborate with local partners, officials, and landowners to provide situational updates pertinent to the fire.</li> <li>• <b>Logistics:</b> Provide support ensuring food, water, and shelter for incident responders.</li> <li>• <b>Human Resources:</b> Ensure that all incident personnel are treated with dignity and respect, while having zero tolerance for harassment, alcohol, or illegal drug use.</li> <li>• <b>Public Information:</b> Provide timely and accurate information through media outlets, briefings, and social platforms as needed.</li> <li>• <b>Finance:</b> Monitor and communicate incident cost associated with meeting incident objectives.</li> <li>• <b>Planning:</b> Provide incident documentation, resource tracking, and meeting management.</li> </ul>			
<b>6. Weather Forecast &amp; General Safety Message for Period – See Attached</b>			
<b>7. Attachments (mark if attached)</b>			
<input checked="" type="checkbox"/> <b>Organization List - ICS 203</b>	<input checked="" type="checkbox"/> <b>Weather Forecast</b>	<input checked="" type="checkbox"/> <b>Safety Message</b>	
<input checked="" type="checkbox"/> <b>Div. Assignment Lists - ICS204</b>	<input checked="" type="checkbox"/> <b>Fire Behavior Forecast</b>	<input type="checkbox"/> <b>Medical Emergency Com Plan</b>	
<input checked="" type="checkbox"/> <b>Communications Plan - ICS 205</b>	<input checked="" type="checkbox"/> <b>Incident Map</b>	<input type="checkbox"/>	
<input checked="" type="checkbox"/> <b>Medical Plan - ICS 206</b>	<input checked="" type="checkbox"/> <b>Air Operations - ICS 220</b>	<input type="checkbox"/>	
<b>9. Prepared by</b> Aileen Nichols	<b>9. Approved by (Incident Commander)</b> <i>Brian Gales</i>		

ORGANIZATION ASSIGNMENT LIST	
1. Incident Name <b>Pioneer</b>	
2. Date <b>June 14, 2024</b>	3. Time <b>1830</b>
4. Operational Period <b>June 15, 2024 0600-2200</b>	
Position	Name
<b>NWIMT 13 LWD 6/24/2024</b>	
5. Incident Commander and Staff	
Incident Commander	<b>Brian Gales (O-8.1)</b>
Deputy Incident Commander	<b>Eric Riener (O-8.2)</b>
Liaison Officer	<b>Bill Neckels (O-8.3)</b>
ISAP	<b>Robert Burnside (O-14)</b>
Information Officer	<b>Eric Waters (O-8.5)</b>
Safety Officer	<b>Ray Hershey (O-8.4)</b>
6. Agency/Organization Representative(s):	
USFS Oak/Wen Agency Administrator	<b>Kari Grover-Wier</b>
USFS Oak/Wen Agency Administrator - t	<b>Paul Willard</b>
DNR Agency Administrator	<b>Larry Leach</b>
DNR Deputy Agency Administrator	<b>Wyatt Leighton</b>
LEAD READ	<b>Brigitte Ranne</b>
REAF - t	<b>Hector Rodriguez</b>
7. Planning Section	
Plans Chief	<b>Aileen Nichols (O-8.14)</b>
Resources Unit	<b>Meredith Butcher (O-8.15)</b>
Status Check-In/ Demob Unit	<b>Laura Backlund (O-8.20)</b>
Situation Unit	<b>Laurie Bergvall (O-8.18)</b>
Fire Behavior Analyst	<b>Dean Warner (O-8.19)</b>
Incident Meteorologist	<b>Trent Smith (O-58)</b>
Documentation Unit - Virtual	<b>Deidre Smith (O-59)</b>
GIS Specialist	<b>Kayla Fermin (O-8.16)</b>
GIS Specialist	<b>Austin Lewandowski (O-50)</b>
Computer Specialist	<b>Dave Johnson (O-8.17)</b>
Computer Specialist	<b>George Jenkins (O-64)</b>
8. Logistics Section	
Logistics Chief	<b>Bryan Swanberg (O-8.22)</b>
Deputy Logistics Chief	<b>Cindy Preston (O-8.21)</b>
Deputy Logistics Chief	<b>Dave Willis (O-8.23)</b>
Supply Unit Leader	<b>Jon Byerly (O-8.25)</b>
Ordering Manager	<b>Robert Yarnall (O-8.30)</b>
Communications Unit Ldr - t	<b>Bruce Hanna (O-8.27)</b>
Incident Comm Mgr	<b>Trina Contreras (O-8.31)</b>
Com Tech	<b>Brian Wolfenburger (O-8.32)</b>
Food Unit Leader	<b>Pat Young (O-8.26)</b>
Facilities Unit Leader	<b>Keith Yonaka (O-8.24)</b>
Medical Unit Leader	<b>James Brown (O-8.28)</b>
Ground Support Unit	<b>William Braddy (O-8.29)</b>
Receiving/Distribution Mgr - t	<b>Karl Peterson (O-31)</b>
Base Camp Manager	<b>Carl Schilter (O-12)</b>
Security Manager	<b>Chris Dodds (O-11)</b>
Equipment Manager	<b>Charlie Carmichael (O-23)</b>

9. Operations Section	
Operations (Field)	<b>John Spencer (O-8.6)</b> <b>Whitney Machado - t (O-8.41)</b>
Operations (Planning)	<b>Tom Hall (O-13)</b>
Operations	<b>Brad Reed (O-8.9)</b>
a. Branch I	
Branch Director	<b>Matt James (O-15)</b>
Division Supervisor	<b>A</b> <b>Erik Thorp ( O-53)</b> <b>Chris Carr - t (O-54)</b>
Division Supervisor	<b>Z</b> <b>Robert Boles (O-8.13)</b> <b>Pat Chism - t (O-26)</b>
Group Supervisor	<b>Structure</b> <b>Charlie Cronk (O-24)</b>
b. Branch II	
Branch Director	<b>Spencer Gregory (O-16)</b>
Division Supervisor	<b>S</b> <b>Anna Graves (O-8.10)</b>
Group Supervisor	<b>Roads</b> <b>Jesse Stone (O-8.12)</b> <b>Aaron Bruning - t (O-69)</b>
c.	
d. Air Operations Branch	
Air Operations	<b>Nancy Barker (O-8.8)</b> <b>Callan Wilkins - t (O-17)</b>
Air Support Group	<b>Jesse Machado - t (O-38)</b>
Helibase Manager	<b>David Kessler - t (O-39)</b>
10. Finance Section	
Finance Chief	<b>Veronika Klukas (O-8.33)</b>
Deputy Finance Chief	<b>Paula James (O-8.34)</b>
Cost Unit - Virtual	<b>Lori Price (O-8.35)</b>
Time Unit	<b>Angie Chapman (O-8.36)</b>
Personnel Time Recorder	<b>Heather Fitzpatrick (O-8.38)</b>
Proc Unit Leader	<b>Eric Soto (O-8.37)</b>
COMPS/CLAIMS	<b>Laurette Gaylord (O-45)</b>
Incident Cont. Project Insp	<b>Stan Zazado (O-8.39)</b>
In-Box Manager	<b>Emily Cohn (O-46)</b>
<b>PREPARED BY: Meredith Butcher</b>	



# Fire Weather Forecast



**FORECAST NO:** 03  
**PREDICTION FOR:** 24 Hr Shift  
**SHIFT DATE:** Saturday 6/15/2024

**INCIDENT:** Pioneer Fire

**SIGNED:** Trent Smith *Trent P. Smith*

**TIME AND DATE ISSUED:** 6/14/2024 1800 hrs

Incident Meteorologist (IMET)

**Discussion:** A trough of low pressure will be over the region for the next several days causing cooler temperatures and higher humidity. The winds will continue to be out of the northwest with the strongest gusts being experienced on the ridges. Scattered showers will be moving through the region today, but the showers will have a difficult time holding together on the lee side of the Cascade crest. Conditions will remain cool into Sunday with less wind.

### **WEATHER FORECAST FOR TODAY:**

**SKY/WEATHER:** Mostly cloudy. Scattered rain showers. Snow level around 5000 ft.

**Max Temperature:** 57 to 62.

**Min RH:** 39 to 44 percent.

#### **20 ft WINDS:**

**Lower Valleys:** Northwest 5 to 10 mph. Gusts to 25 mph in the afternoon.

**Mid-slopes and Ridges:** Northwest 5 to 10 mph increasing 10 to 15 mph gusts to 35 mph in the afternoon.

**HAINES INDEX:** 3 Very Low.

**TRANSPORT WINDS:** W 22 mph.

**INVERSION:** 1500 ft inversion lifting to 8000 ft by afternoon.

### **TONIGHT:**

**SKY/WEATHER:** Mostly cloudy becoming partly cloudy. Isolated rain showers in the evening.

**Min Temperature:** 39 to 44.

**Max RH:** 60 to 65 percent.

#### **20 ft Wind**

**Valleys/Lower Slopes:** Northwest 5 to 10 mph with gusts to 25 mph decreasing to 3 to 8 mph after midnight.

**Mid-Slopes and Ridges:** Northwest 8 to 13 mph with gusts to 30 mph decreasing to 5 to 10 mph after midnight.

**INVERSION:** Developing after 2000 hrs near 1500 ft.

### **SUNDAY:**

**SKY/WEATHER:** Partly cloudy becoming mostly cloudy in the afternoon. Isolated rain showers in the afternoon.

**Max Temperature:** High 58 to 63.

**Min RH:** 47 to 52 percent.

#### **20 ft WINDS:**

**Lower Valleys:** Northwest 5 to 10 mph.

**Mid-slopes and Ridges:** Northwest 5 to 10 mph. Gusts to 20 mph in the afternoon.

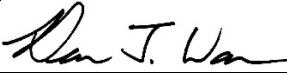
**HAINES INDEX:** 3 Very Low.

**TRANSPORT WINDS:** NW 15 mph.

Yesterdays observations thru 1700	Min Temp	Max RH	Max Temp	Min RH	Peak Wind	Precipitation
<b>Stehekin RAWS (1230')</b>	55	53%	73	22%	23 mph	0.00
<b>Lake Chelan Airport (1260')</b>	59	39%	66	26%	26 mph	0.00
<b>Entiat RAWS (2825')</b>	54	48%	62	30%	46 mph	0.00
<b>Camp 4 RAWS (3156')</b>	50	52%	62	33%	34 mph	0.00

Weather observations can be texted to 406-360-6330 or emailed to trent.smith@noaa.gov

## Fire Behavior Forecast # 4

<b>Name of Incident:</b> Pioneer Fire WA-SES-000173	<b>Administrative Unit:</b> SE Region DNR / Okanagan-Wenatchee NF
<b>Date &amp; Time Issued:</b> 1900 – 6/14/2024	<b>Operational Period:</b> Day 6/15/2024
<b>FBAN:</b> Dean Warner	<b>Signed:</b> 

**Weather Summary** - See attached Pioneer Fire Weather Forecast.  
Gusting morning winds then breezy – cloudy to partly cloudy – moderating temperatures and RH.

### Fire Behavior Summary

<b>General –</b> <u>Max. spot distance:</u> <b>0.25 mi.</b> <u>Probability of Ignition:</u> <b>50%</b> <u>Haines Index:</u> <b>3 (low)</b> <u>LAL:</u> 1 <u>ERC – Y:</u> <b>40 (75 percentile)</b>	<b>FUEL MODEL</b>	<b>Maximum ROS</b>	<b>Backing ROS</b>	<b>Maximum Flame length</b>	<b>Backing Flame length</b>
	GR2 - Moderate load grass shrub	<b>3 ch/hr</b>	<b>1 ch/hr</b>	<b>1 feet</b>	<b>1 feet</b>
	SH2 - Moderate load shrub	<b>2 ch/hr</b>	<b>1 ch/hr</b>	<b>2 feet</b>	<b>1 feet</b>
	TU5 – Very high load timber shrub	<b>8 ch/hr</b>	<b>2 ch/hr</b>	<b>7 feet</b>	<b>2 feet</b>
	TL8 – Long needle timber litter	<b>6 ch/hr</b>	<b>1 ch/hr</b>	<b>3 feet</b>	<b>1 feet</b>

#### **GENERAL**

Today's conditions will support active fire spread. Fire is now established from the north slopes of Cascade Creek in Section 6 to the south side of Rex Creek and near the top of Skookum Puss Mountain. Spotting has been observed up to one quarter mile.

**Topography:** This fire lies on the north slopes of Lake Chelan on a dry southwest aspect. Steep rugged terrain dominates the fire environment. Rolling material and short upslope fire runs will pose a significant safety risk. Several natural barriers in the form of rock outcrops and scree slopes are present in the fire area. When slope reversal occurs, expect even more dramatic difference in rates of spread than you would normally see.

**Fuels:** The fire is burning in the old Rex Creek burn scar from 2001. This 23 year old fire scar has left behind a mosaic of fuels including a moderate load of heavy fuel, which is dry enough to sustain fire spread. Rock outcrops can sever the fuel continuity but dry grass and sparse dead and downed material in rocky areas can still maintain fire progression.

**ERC:** Due to the time of year, Energy Release Component values remain below the 90<sup>th</sup> percentile. The dry aspect, lake winds, and steep slopes offer ample opportunity for this fire to outperform typical fire indices.

#### **SPECIFIC**

**North Side:** Fire has established north of Cascade Creek and will continue uphill towards the Meadow Creek drainage. Expect fire to establish in Meadow Creek producing short uphill runs. Fire progression will be against forecasted winds but recent observations have shown that this fire is capable of advancing up to 8 chains per hour, against the wind.

**South Side:** Lower on the slope, suppression activity has checked fire progression. Higher in the Rex Creek drainage, fire will continue to establish and progress up drainage and sidehill to the southeast.

**Ridgetop:** Fire will continue to advance to the top of Skookum Puss Mountain.

#### **Air Ops/Smoke Dispersion**

Smoke from active fire may impact visibility for air operations.

#### **Safety**

Preplan! Don't wait until you're in the wrong place at the wrong time---with no time. Trigger points should be based on measurable factors such as: • RH • Winds • Fire Behavior • Topographical boundaries • Time constraints/Time of day • Time/distance to safety zones • Loss of suppression resources • Other operational considerations (e.g., firefighter fatigue, loss of lookouts or communication, weather change).

<b>DIVISION ASSIGNMENT LIST</b>			1. Branch <b>I</b>		2. Division <b>A</b>	
3. Incident Name <b>Pioneer</b>			4. Operational Period Date: <b>06/15/2024</b> Time: <b>0600-2200</b>			
5. Operations Personnel						
Operations Chief		<b>John Spencer Whitney Machado - t</b>		Branch Director		<b>Matt James</b>
Safety Officer		<b>Ray Hershey</b>		Division Supervisor		<b>Eric Thorp Chris Carr - t</b>
6. Resources Assigned this Period						
Strike Team/Task Force/Resource Designator		Leader	# Persons	LWD	Drop Off PT./Time	Pick Up PT./Time
<b>1</b>	<b>C-8 CRW1 Union IHC</b>	<b>Eric Jorgenson</b>	<b>24</b>	<b>6/27</b>		
<b>2</b>	<b>C-9 CRW1 Zigzag IHC</b>	<b>Sandra Sperry</b>	<b>25</b>	<b>6/28</b>		
<b>3</b>	<b>C-2 CR2I Wenatchee River C74</b>	<b>Marquart</b>	<b>15</b>	<b>6/24</b>		
<b>4</b>						
<b>5</b>	<b>O-49 TFLD</b>	<b>Jeremy Zemke</b>	<b>1</b>	<b>6/26</b>		
<b>6</b>	<b>O-52 TFLD - t</b>	<b>Dante Ybarra</b>	<b>1</b>	<b>6/26</b>		
<b>7</b>						
<b>8</b>	<b>O-67 MEDIC 3</b>	<b>Adam Lathrop</b>	<b>1</b>	<b>6/27</b>		
<b>9</b>						
<b>10</b>	<b>O-62 SOFC - t</b>	<b>Jeremiah Maghan</b>	<b>1</b>	<b>6/25</b>		
<b>11</b>						
<b>12</b>						
<b>13</b>						
<b>14</b>						
<b>15</b>						
<b>16</b>						
<b>17</b>						
<b>18</b>						
<b>19</b>						
<b>20</b>						
		<b>Meal count</b>	<b>68</b>			
7. Control Operations: <b>Task: Contain fire spread to the northwest where terrain and fuels allow for high probability of success. Assess fire perimeter progression to the north and east at higher elevations.</b> <b>Purpose: To slow fire progression, provide time for suppression tactics, and prep around critical values.</b> <b>End state: Minimize fire impacts to critical values including private inholdings and Forest Service infrastructure.</b>						
8. Special Instructions: <b>**Minimize ground disturbance on the Moore Point and Meadow Creek fans in order to protect sensitive resources.**</b> <b>24, 48, 72 hour planning/logistical support will be paramount to our success.</b>						
9. Division/Group Communication Summary <b>See Communications Plan</b>						
Prepared by (Resource Unit Ldr) <i>Meredith Butcher</i>		Approved by (Planning Sect. Ch.) <i>Aileen Nichols</i>		Date <b>06/14/2024</b>	Time <b>2000</b>	

<b>DIVISION ASSIGNMENT LIST</b>			1. Branch <b>I</b>		2. Division <b>Z</b>	
3. Incident Name <b>Pioneer</b>			4. Operational Period Date: <b>06/15/2024</b> Time: <b>0600-2200</b>			
5. Operations Personnel						
Operations Chief		<b>John Spencer Whitney Machado - t</b>		Branch Director		<b>Matt James</b>
Safety Officer		<b>Ray Hershey</b>		Division Supervisor		<b>Robert Boles Pat Chism - t</b>
6. Resources Assigned this Period						
Strike Team/Task Force/Resource Designator		Leader	# Persons	LWD	Drop Off PT./Time	Pick Up PT./Time
<b>1</b>	<b>C-3 CRW1 Baker River IHC</b>	<b>Chicks</b>	<b>23</b>	<b>6/22</b>		
<b>2</b>	<b>C-4 CRW1 LaGrande IHC</b>	<b>Elquezabal</b>	<b>21</b>	<b>6/23</b>		
<b>3</b>						
<b>4</b>	<b>O-48 TFLD</b>	<b>Jeff Coburn</b>	<b>1</b>	<b>6/26</b>		
<b>5</b>						
<b>6</b>	<b>O-43 REMS 1</b>	<b>Caitlin Lucia</b>	<b>4</b>	<b>6/25</b>		
<b>7</b>	<b>O-75 MEDIC 4</b>	<b>Nathan Etherington</b>	<b>1</b>	<b>6/28</b>		
<b>8</b>						
<b>9</b>	<b>O-20 SOFR</b>	<b>Jeff Higen</b>	<b>1</b>	<b>6/26</b>		
<b>10</b>						
<b>11</b>						
<b>12</b>						
<b>13</b>						
<b>14</b>						
<b>15</b>						
<b>16</b>						
<b>17</b>						
<b>18</b>						
<b>19</b>						
<b>20</b>						
		<b>Meal count</b>	<b>51</b>			
7. Control Operations: <b>Task: Contain fire spread to the southwest where terrain and fuels allow for high probability of success. Assess fire perimeter progression to the west/southwest at higher elevations.</b>  <b>Purpose: To slow fire progression, provide time for suppression tactics, and prep around critical values.</b>  <b>End state: Minimize fire impacts to critical values including private inholdings and Forest Service infrastructure.</b>						
8. Special Instructions:  <b>24, 48, 72 hour planning/logistical support will be paramount to our success.</b>						
9. Division/Group Communication Summary <b>See Communications Plan</b>						
Prepared by (Resource Unit Ldr) <i>Meredith Butcher</i>		Approved by (Planning Sect. Ch.) <i>Aileen Nichols</i>		Date <b>06/14/2024</b>	Time <b>2000</b>	



<b>DIVISION ASSIGNMENT LIST</b>			1. Branch <b>I</b>		2. Group <b>Structure</b>	
3. Incident Name <b>Pioneer</b>			4. Operational Period Date: <b>06/15/2024</b> Time: <b>0600-2200</b>			
5. Operations Personnel						
Operations Chief		<b>John Spencer Whitney Machado - t</b>		Branch Director		<b>Matt James</b>
Safety Officer		<b>Ray Hershey</b>		Division Supervisor		<b>Charlie Cronk</b>
6. Resources Assigned this Period						
	Strike Team/Task Force/Resource Designator	Leader	# Persons	LWD	Drop Off PT./Time	Pick Up PT./Time
<b>1</b>	<b>C-1 CRW2 DNR Crew 411</b>	<b>Lyle</b>	<b>16</b>			
<b>2</b>						
<b>3</b>	<b>O-41 WFM1 Eagle Cap</b>	<b>Gabe Hale</b>	<b>10</b>	<b>6/25</b>		
<b>4</b>						
<b>5</b>	<b>O-50 TFLD Boat Coordinator</b>	<b>Todd Olson</b>	<b>1</b>	<b>6/26</b>		
<b>6</b>	<b>O-20 TFLD-t Boat Coordinator</b>	<b>Katy Giddings</b>	<b>1</b>			
<b>7</b>						
<b>8</b>	<b>O-51 MEDIC 1</b>	<b>Remington Becker</b>	<b>1</b>	<b>6/26</b>		
<b>9</b>						
<b>10</b>						
<b>11</b>						
<b>12</b>						
<b>13</b>						
<b>14</b>						
<b>15</b>						
<b>16</b>						
<b>17</b>						
<b>18</b>						
<b>19</b>						
<b>20</b>						
		<b>Meal count</b>	<b>29</b>			
7. Control Operations: <b>Task: Point protection at inholdings and trail system infrastructure between Prince Creek and Cascade Creek.</b> <b>Purpose: To protect inholdings and infrastructure.</b> <b>End state: Inholdings and infrastructure are secure from fire impacts.</b>						
8. Special Instructions: <b>Boat Coordinator will be located at Fields Point.</b> <b>24, 48, 72 hour planning/logistical support will be paramount to our success.</b>						
9. Division/Group Communication Summary <b>See Communications Plan</b>						
Prepared by (Resource Unit Ldr) <i>Meredith Butcher</i>			Approved by (Planning Sect. Ch.) <i>Aileen Nichols</i>		Date <b>06/14/2024</b>	Time <b>2000</b>

<b>DIVISION ASSIGNMENT LIST</b>			1. Branch <b>II</b>		2. Division <b>S</b>	
3. Incident Name <b>Pioneer</b>			4. Operational Period Date: <b>06/15/2024</b> Time: <b>0600-2200</b>			
5. Operations Personnel						
Operations Chief		<b>John Spencer Whitney Machado - t</b>		Branch Director		<b>Spencer Gregory</b>
Safety Officer		<b>Ray Hershey</b>		Division Supervisor		<b>Anna Graves</b>
6. Resources Assigned this Period						
Strike Team/Task Force/Resource Designator		Leader	# Persons	LWD	Drop Off PT./Time	Pick Up PT./Time
<b>1</b>	<b>E-18 UTV</b>					
<b>2</b>						
<b>3</b>						
<b>4</b>						
<b>5</b>						
<b>6</b>						
<b>7</b>						
<b>8</b>						
<b>9</b>						
<b>10</b>						
<b>11</b>						
<b>12</b>						
<b>13</b>						
<b>14</b>						
<b>15</b>						
<b>16</b>						
<b>17</b>						
<b>18</b>						
<b>19</b>						
<b>20</b>						
		<b>Meal count</b>				
7. Control Operations: <b>Task: Scout division S for secondary control line opportunities (8200 Rd, Coyote Ridge, Nelson Butte and Gold Creek 600 Rd).</b>  <b>Purpose: To identify and inventory historic control lines from past fire history.</b>  <b>End state: Potential control lines are identified in alignment with suppression strategy.</b>						
8. Special Instructions:  <b>24, 48, 72 hour planning/logistical support will be paramount to our success.</b>						
9. Division/Group Communication Summary  <b>See Communications Plan</b>						
Prepared by (Resource Unit Ldr) <i>Meredith Butcher</i>		Approved by (Planning Sect. Ch.) <i>Aileen Nichols</i>		Date <b>06/14/2024</b>	Time <b>2000</b>	

<b>DIVISION ASSIGNMENT LIST</b>			1. Branch <b>II</b>		2. Group <b>Roads</b>	
3. Incident Name <b>Pioneer</b>			4. Operational Period Date: <b>06/15/2024</b> Time: <b>0600-2200</b>			
5. Operations Personnel						
Operations Chief		<b>John Spencer Whitney Machado - t</b>		Branch Director		<b>Spencer Gregory</b>
Safety Officer		<b>Ray Hershey</b>		Division Supervisor		<b>Jesse Stone Aaron Bruning - t</b>
6. Resources Assigned this Period						
Strike Team/Task Force/Resource Designator		Leader	# Persons	LWD	Drop Off PT./Time	Pick Up PT./Time
<b>1</b>	<b>E-73 WTS1 Strand Tenders</b>	<b>Wade Strand</b>	<b>1</b>	<b>6/27</b>		
<b>2</b>	<b>E-74 WTS2 MVP Team</b>	<b>Dale Conrad</b>	<b>1</b>	<b>6/27</b>		
<b>3</b>	<b>E-75 WTS2 David Rains</b>	<b>Ron Laymance</b>	<b>1</b>	<b>6/27</b>		
<b>4</b>	<b>E-78 WTS2 King Hydroseeding</b>	<b>Don Warden</b>	<b>1</b>	<b>6/27</b>		
<b>5</b>	<b>E-83 WTS2 King Hydroseeding</b>	<b>Joseph Ivie</b>	<b>1</b>	<b>6/27</b>		
<b>6</b>						
<b>7</b>	<b>E-71 GRD2 Pettet</b>	<b>Mark Rowe</b>	<b>2</b>	<b>6/27</b>		
<b>8</b>	<b>E-72 GRD2 Scotts Excavating</b>	<b>Lucas Scott</b>	<b>2</b>	<b>6/27</b>		
<b>9</b>						
<b>10</b>	<b>E-93 DZR3 Batchelor Excavation</b>	<b>Narce Christiansen</b>	<b>2</b>	<b>6/28</b>		
<b>11</b>						
<b>12</b>	<b>O-64 MEDIC 2</b>	<b>Joel Bower</b>	<b>1</b>	<b>6/26</b>		
<b>13</b>						
<b>14</b>	<b>E-19 UTV</b>					
<b>15</b>						
<b>16</b>						
<b>17</b>						
<b>18</b>						
<b>19</b>						
<b>20</b>						
		<b>Meal count</b>	<b>12</b>			
7. Control Operations: <b>Task: Scout and prep 8200 Rd (Grade Creek Rd) to be utilized for mobilization of division S resources.</b>  <b>Purpose: To open the 8200 Rd for use.</b>  <b>End state: 8200 Rd is accessible for fire resources.</b>						
8. Special Instructions:  <b>24, 48, 72 hour planning/logistical support will be paramount to our success.</b>						
9. Division/Group Communication Summary  <b>See Communications Plan</b>						
Prepared by (Resource Unit Ldr) <i>Meredith Butcher</i>		Approved by (Planning Sect. Ch.) <i>Aileen Nichols</i>		Date <b>06/14/2024</b>		Time <b>2000</b>

## AIR OPERATIONS SUMMARY ICS-220

<b>Incident Name / Number</b> Pioneer / WA-SES-000173	<b>Sunrise</b> 05:00	<b>Sunset</b> 21:00	<b>Airport</b> S10	<b>Pumpkin</b> 21:30
--	-------------------------	------------------------	-----------------------	-------------------------

**General Remarks, Safety Notes, Hazards, Air Operations Special Equipment, etc.**

\*Order All Aircraft through Command to Helibase or CWICC Dispatch (509-884-3473).

\*Sanitize Buckets before changing water sources.

\*Clear drop area/line before initiating drop sequence.

\*Be cognizant of all overhead and environmental hazards while working with Aircraft.

\*All GPS is to be collected in DIMM

\*Aviation daily cost to: 2024.pioneer.finance@firenet.gov

<b>Time Prepared</b> 18:00	<b>Date Prepared</b> 6/14/2024
<b>Shutdown</b> 21:00	<b>Operational Period - Date</b> 6/15/2024

**Helibase Information**

**Pioneer Helibase**  
Location  
47 51.96 N  
119 56.56 W  
Phone  
509-560-9484

**TFR**  
4/8806 - 24hr  
Surface to 10,000' MSL

**Helispots**  
H1 | 48 10.813N / 120 31.914W  
H5 | 48 12.162N / 120 35.447W  
H10 | 48 14.050N / 120 36.461W  
H15 | 48 08.754N / 120 29.813W  
H25 | 47 59.212N / 120 16.526W

**Medivac Ship Information**

**Short-Haul**  
Name: N-407RL  
Phone: 406-212-4515  
Make/Model: 407  
Location: 25 Mile/Lake Chelan HB  
**Request Procedure for These Aircraft:**  
Communications on Command,  
Order through Helibase/CWICC,  
509-560-9484

**Prepared By**  
Callan Wilkins - AOBdt

**Operational Period - Time**  
0600-2230

Incident Frequencies	RX	Tone	TX	Tone	AM/FM	Position	Name	Phone	EQUIPMENT/SUPPLIES	
									AOBD	AOBD-T
Air to Air Primary (A-8)	123.4000		123.4000		AM	AOBD	Nancy Barker	(253) 312-4301	Com Trailer	E-20
Air to Air Secondary (A-9)	118.2750		118.2750		AM	AOBD-T	Callan Wilkins	(509) 899-3676	Hand Wash Station	E-47
						ASGS			Water Tender	E-77
A/G Primary (A-10)	169.1500		169.1500		FM	ASGS-T	Jesse Machado	(509) 881-9393	Water Tender	E-14
A/G Secondary (A-11)	168.4000		168.4000		FM	HEBM				
						HEBM-T	David Kessler	(509) 560-9484		
DECK	163.1000		163.1000		FM	UAS	Ryan Gregg	(360) 852-2296		
AIR GUARD	168.6250		168.6250	110.9	FM					
VMED 29	155.3475	156.7	155.3475	156.7	FM					
						UAO	Cory Dolberry	(509) 668-2801		

### HELICOPTERS - Assigned

FAA #	TYPE	Make/Model	Helibase	Start	Avail	Remarks
HB-16FH	1	UH-60	Chelan	0800	0900	BKT/LL
HB-17FH	1	UH-60A	Chelan	0800	0900	BKT/LL
HB-161KA	1	K-1200	Chelan	0800	0900	BKT/LL
HB-344RA	1	CH-47D	Chelan	0800	0900	BKT/LL
H-304HA	2	Bell 205A	Chelan	0800	0900	BKT/LL
H-407RL	3	407	Chelan	0800	0900	Wenatchee Short-haul
H-684H	3	407	Chelan	1500	1500	Vale Helitack

### HELICOPTERS - GACC Prepo

FAA #	TYPE	Make/Model	Airport	Start	Avail	Remarks
H-205TK	2	Bell 205A	Chelan	0800	0900	Rapps

### UAS

Call Sign	Type	Make/Model	Base	Start	Avail	Remarks
UR-31	3	AltaX	Lucerne	0600	2200	IR/PSD

### FIXED WING AA/HLCO

FAA #	Call Sign	Make/Model	Base	Start	Avail	Remarks
N-586DV	610	Commander	WEN	0900	1000	Air Attack

# INCIDENT RADIO COMMUNICATIONS PLAN (ICS 205)

## Controlled Unclassified Information//Basic

1. Incident Name:		2. Date/Time Prepared:		3. Operational Period:						
<b>PIONEER</b>		Date: 06/14/2024 Time: 17:00		Date/Time From: 06/15/2024 0600 Date/Time To: 06/16/2024 0600						
<b>4. Basic Radio Channel Use:</b>										
Zone Group	Ch #	Function	Channel Name/Trunked Radio	Assignment	RX Freq	RX Tone/NAC	TX Freq	TX Tone/NAC	Mode (A, D, or M)	Remarks
	1	TACTICAL	TAC 1	DIV A	168.0500	123.0	168.0500	123.0	A	
	2	TACTICAL	TAC 2	DIV S	168.2000	123.0	168.2000	123.0	A	
	3	TACTICAL	TAC 3	DIV Z	168.6000	123.0	168.6000	123.0	A	
	4	TACTICAL	TAC 4	STRUCTURE	166.7250	123.0	166.7250	123.0	A	
	5	TACTICAL	TAC 5	ROADS	166.7750	123.0	166.7750	123.0	A	
	6	TACTICAL	TAC 6	BOAT	168.2500	123.0	168.2500	123.0	A	
	7	COMMAND	CMD 7	ALL	168.4750	123.0	165.4000	123.0	A	CHELAN BUTTE
	8	COMMAND	CMD 8	ALL	169.5375	123.0	164.7125	123.0	A	OLD MAID MT.
	9	COMMAND	CMD 9	ALL	170.4500	123.0	168.1000	123.0	A	FLORA MT.
	10	COMMAND	OLD MAID	UNASSIGNED	173.0500	146.2	164.9125	136.5	A	
	11	TACTICAL	WEN-PROJ	UNASSIGNED	168.6750	000.0	168.6750	000.0	A	
	12	TACTICAL	VTAC 11	UNASSIGNED	151.1375	156.7	151.1375	156.7	A	
	13	AIR TO GROUND	A/G PRI	ALL DIVS	169.1500	000.0	169.1500	000.0	A	
	14	AIR TO GROUND	A/G SEC	ALL DIVS	168.4000	000.0	168.4000	000.0	A	
	15	AIR TO GROUND	VMED 29	ALL DIVS	155.3475	156.7	155.3475	156.7	A	AIR EMS COORDINATION
	16	AIR TO GROUND	AIRGUARD	ALL DIVS	168.6250	000.0	168.6250	110.9	A	EMERGENCY AIRCRAFT CONTACT
<b>5. Special Instructions: 24 hour staffing: PIONEER COMMUNICATIONS PHONE NUMBER: (208) 891-7870 / CURRENT CLONE "PIE 6-13"</b>										
<b>6. Prepared By COML</b>										
Name: Bruce Hanna Signature: /s/ Bruce Hanna										
<b>ICS 205</b>										
IAP Page Date/Time: 6/14/2024 19:50										



# OKANOGAN-WENATCHEE NATIONAL FOREST

## Resource Guidelines for Uplake Fire Suppression

Fire: Pioneer

Location: Pioneer Creek, North shore of Lake Chelan

Date: 6/11/2024

### Resource Advisors

Lead READ: Brigitte Ranne 509-663-6118, [brigitte.ranne@usda.gov](mailto:brigitte.ranne@usda.gov)

REAF trainee: Hector Rodriguez

### **HUMAN SAFETY IS THE HIGHEST PRIORITY FOR EVERY EMERGENCY RESPONSE ACTION**

#### *MIST for Spike Camp and Lucerne Forward Operating Base Management*

- Employ minimum impact suppression tactics (MIST) where feasible, especially in remote or sensitive areas.
- If spike camps are necessary, use existing, or previously impacted campsites where available. If existing campsites are not available; use your local resource advisor to help identify the most resilient sites in rocky or sandy soils. Avoid camping in wet meadows, along streams, or on lake shores.
- In small spike camp situations (not Lucerne), individuals should use the "cat-hole" method of disposing of human waste. Toilet seats should be located a minimum of 200 feet from water sources. Holes should be dug 6-8 inches deep.
- Store food properly so that it is not accessible to wildlife. Consider hanging food in trees at least 15 feet off the ground and 5 feet from the trunk of the tree, or store food in sealable containers. Store food away from the campsite (300 feet is ideal) to reduce the risk of human and bear (and rodent!) conflicts.
- Do not let garbage and food scraps accumulate in camp. All garbage and food scraps need to be removed from the camp ASAP and before leaving the site.
- Minimize disturbance to land in preparing bedding and campfire sites. Do not clear vegetation, trench, or excavate a flat spot to create bedding sites.
- Do not use nails in trees. Don't construct camp furniture.
- If a campfire is built for warmth in the evening, build either a pit or mound fire. Use dead and down firewood. Use small diameter wood that burns down more cleanly. Don't burn plastics or aluminum - pack it out with the rest of the camp garbage.



### *Dipping and Drafting*

- No cross-dipping between water bodies. All buckets or snorkels should be cleaned, inspected, and dried in the sun if they must be used between lakes. Dipping in small lakes must be pre-approved by the READ or AA.
- When drafting, use already disturbed areas for stream access (road crossings, dispersed campsites) to reduce the need for riparian vegetation clearing.
- Use screens (3/32" inch) for all pumping operations.
- Use containment pads and basins under pumps and fuel cans. Ensure a spill kit is present with every operating pump.

### *Invasive Species*

- The fire is burning within an infestation of common crupina, a WA State Class A Noxious weed. Prevent spread of crupina off site – plan to wash hose and other equipment. Request fire fighters brush boots before boarding boat.
- Inspect slings and remove all plant/soil material prior to use.
- Ensure all camps, staging areas, helispots and cargo areas are free of invasive plants to prevent spread to un-infested areas.

### *Fisheries /Aquatic Recommendations*

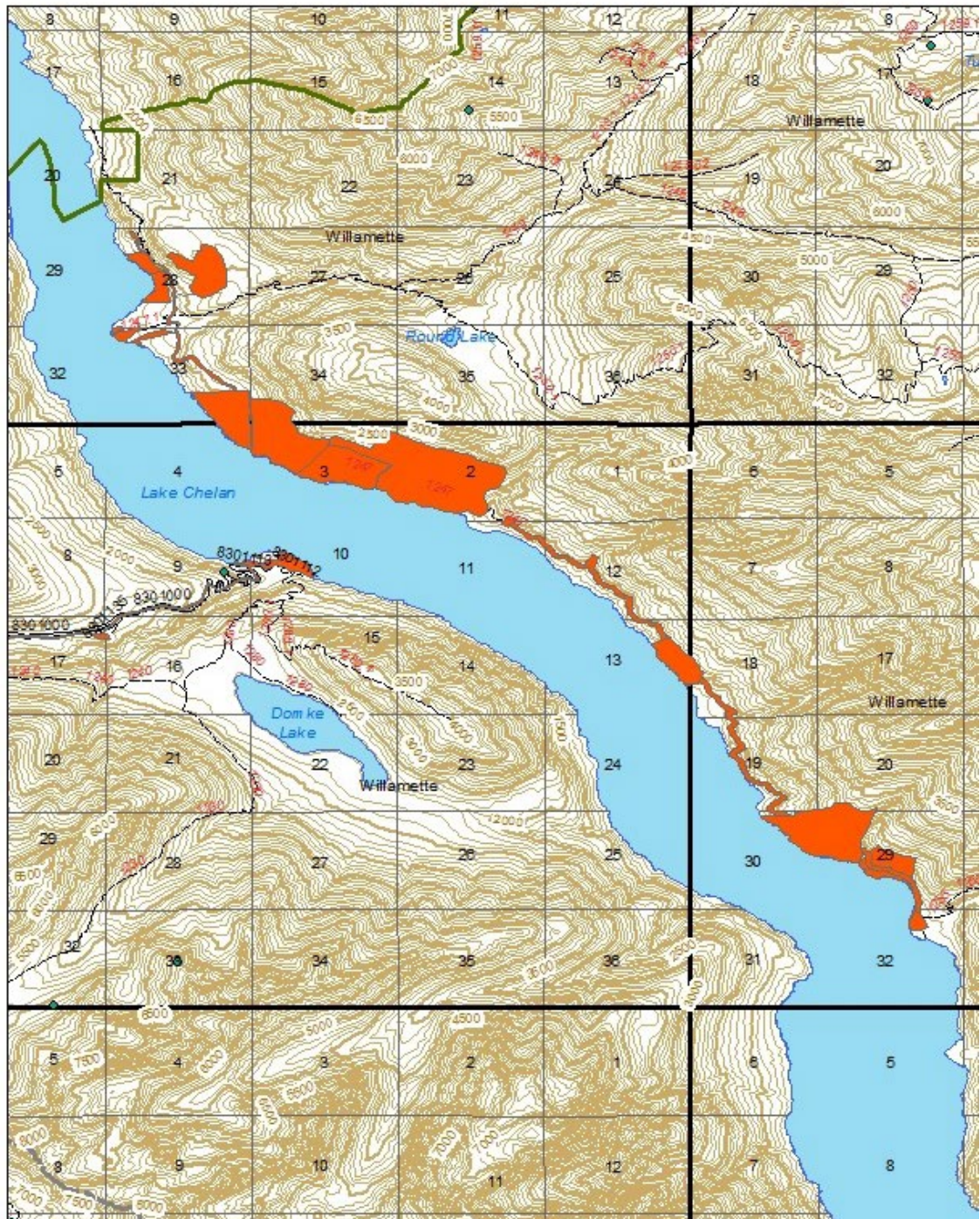
- If trees must be felled in riparian areas for suppression or safety reasons, fell them toward streams where possible and minimize bucking where possible.

## **Cultural Resources**

- If cultural resources are discovered during suppression activities, leave on site and notify READ.



Crupina Seed



Location of common crupina infestations (north shore of Lake Chelan only). The infestation shown at Lucerne is knapweed.



## LOGISTICS HOURS

**Shower:** 0500 - 1200 & 1400 - 2200

**Supply:** 0600 - 2200

**Ground Support:** 0500 - 2200

**Fuel Tender:** 0700 - 2100

**Kitchen:**

Breakfast: 0530 - 0900

Dinner: 1800 - 2100

## PIONEER CONTACT LIST

**Public Information:** 509-210-2926

**Communications:** 208-891-7870

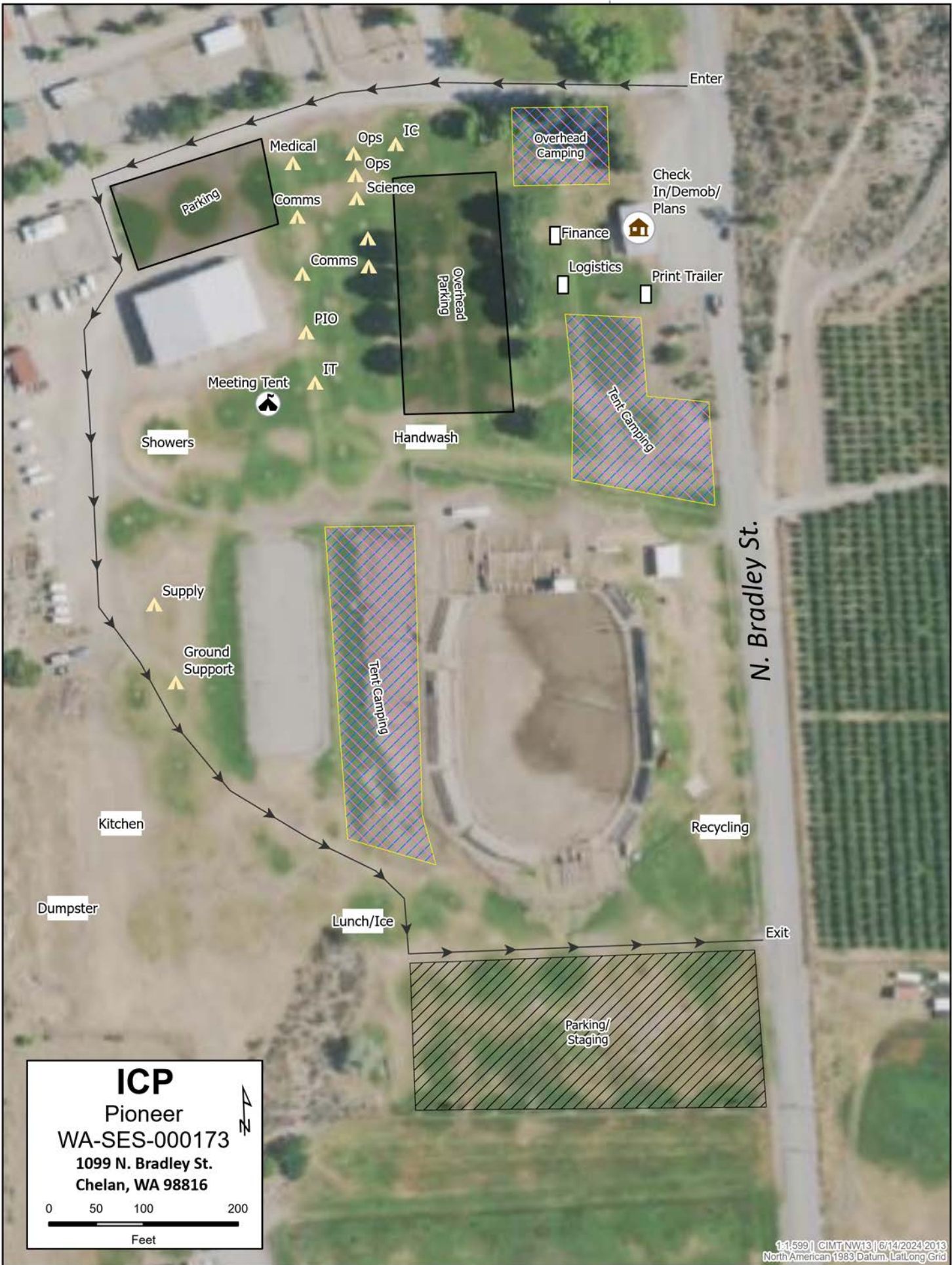
**Check In/Demob:** 509-661-5372

**Medical:** 360-775-5413

**Supply:** 360-827-5382

**Ground Support:** 425-274-6215

**Finance:** Equipment 208-891-6877 & TIME 208-891-8036



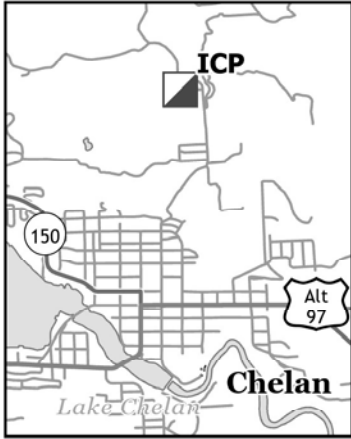


# IAP

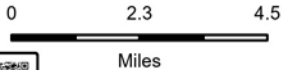
Pioneer  
WA-SES-000173  
06/15/2024 16hr

1998 acres on 6/14/2024 @ 0030

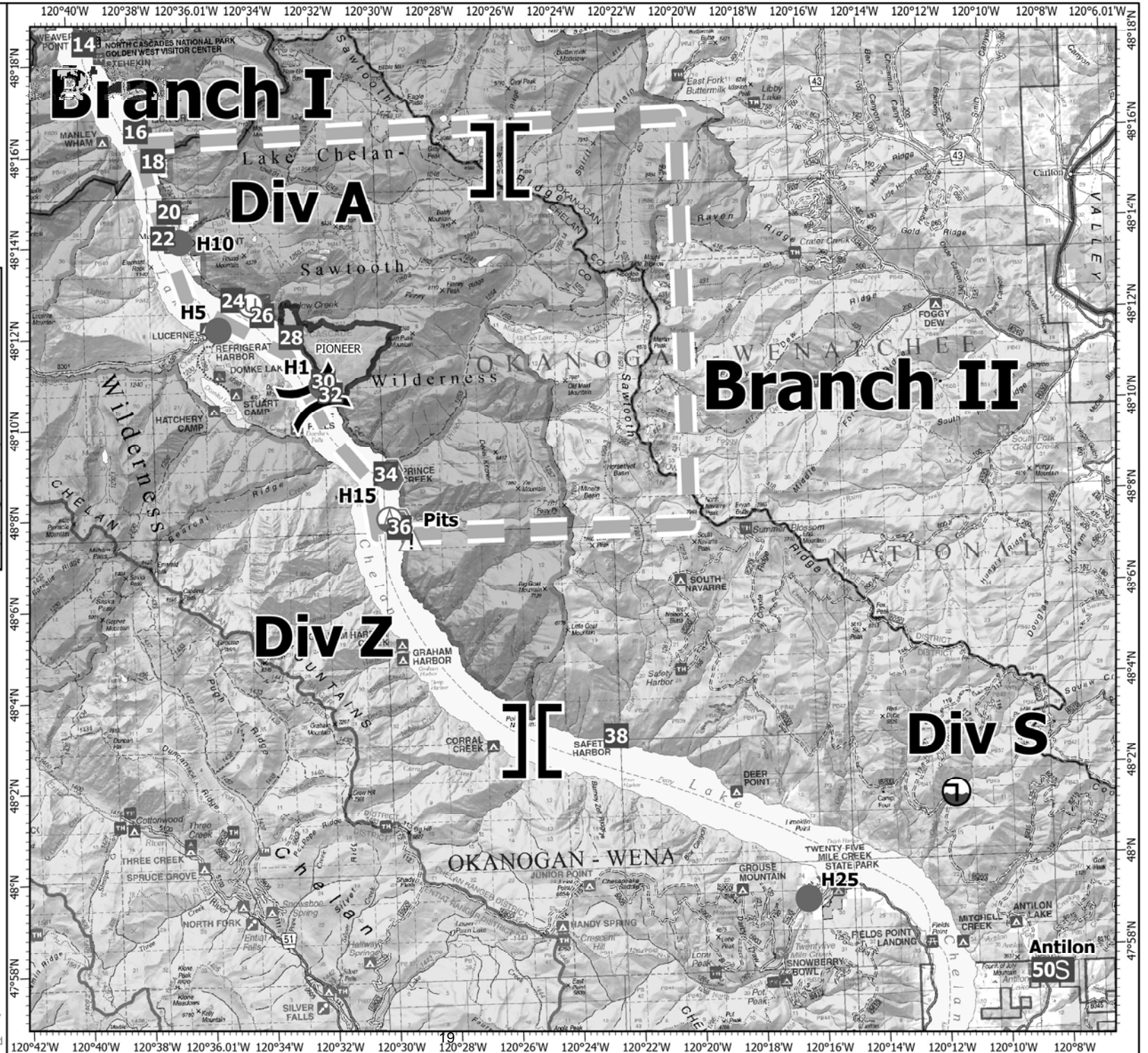
ICP: Chelan Rodeo Grounds  
1099 N Bradley St.  
Chelan, WA 98816



- Helispot
- ⊙ Sling Site
- ⊙ Unimproved Landing Area
- ⊗ Division Break
- ⌋ Branch Break
- Drop Point
- ⊞ Staging Area
- ⊙ Value at Risk
- ⊙ Landmark
- ⊙ Hazard
- ⊙ Draft Site
- H- Completed Hand Line
- M- Completed Mixed Construction Line
- ▬ Temporary Flight Restriction
- ▬ Wildfire Daily Fire Perimeter



1:213,986 | CIMT NW13 | 6/14/2024 2037  
Acres from IR  
North American 1983 Datum. Lat/Long Grid



# DIVISION PLANNING WORKSHEET

NEXT OPERATIONAL DATE

DIVISION/GROUP

NAME OF DIVISION/GROUP

ROLL OVER ASSIGNED RESOURCES

EXCESS RESOURCES

CORRECTION TO 204

E or C  
NUMBER

RESOURCE DESIGNATOR

LEADER

NO.  
PERSONS

COMMENTS

OPERATIONAL PROJECTION (Task, Purpose, End State) 24 hrs

OPERATIONAL PROJECTION (Task, Purpose, End State) 48 hrs

OPERATIONAL PROJECTION (Task, Purpose, End State) 72 hrs

REQUEST FOR ADDITIONAL RESOURCES

NUMBER

TYPE

RESOURCE KIND

DATE NEEDED

**Critical Needs:** If your resource request is critical, describe the mission and the duration resources are needed.

\*





# MEDICAL PLAN (206 WF)

1. Incident/Project Name				2. Operational Period				
Pioneer Fire				Date/Time: 06/15/24 0600-2200				
3. Ambulance Services								
Name	Complete Address	Phone	Advanced Life Support (ALS)					
Lake Chelan EMS	Chelan, WA	911	Yes	X			No	
4. Air Ambulance Services								
Name	Phone/Channel	Frequency, Type of Aircraft & Capability						
Life Flight- Brewster	1-800-232-0911 911	VMED 29, Rotor, ALS, 24 hr						
Airlift NW- Wenatchee	1-800-426-2430 911	VMED 29, Rotor, ALS, 24 hr						
Wenatchee Short Haul- Chelan Airport	Command 7,8,9 (Linked)	VMED 29, Rotor, BLS, Daytime, Short haul						
Snohawk 10- Snohomish	1-800-258-5990 911	VMED 29, Rotor, ALS, Daytime, Hoist						
Spokane County Hoist- Spokane	1-509-532-8930 911	VMED 29, Rotor, ALS, 24 hr, Hoist Daytime only						
5. Hospitals								
Name	Degrees Decimal Minutes		Travel Time From Fire		Phone	Helipad		Level of Care
			Air	Boat		Yes	No	
Lake Chelan Health 110 S. Apple Blossom Drive Chelan WA	Lat:	47° 50' 20 N	30 Min	3 Hr	509-683-2474		X	Level IV Trauma
	Long:	119° 59' 20 W						
Central Washington Hospital 1201 S. Miller Wenatchee WA	Lat:	47° 24. 43 N	1 Hr	4 Hr	509-433-3115	X		Level II Trauma
	Long:	120° 19. 28 W						
Harborview Medical Center 325 9 <sup>th</sup> Ave Seattle WA	Lat:	47° 36. 24 N	1.5 Hr	6 Hr	206-744-4025	X		Level I Trauma Burn Center
	Long:	122° 19. 45 W						
ICP	EMS Responders & Capability:			James Brown MEDL/Paramedic 360-775-5413				
	Equipment Available on Scene:			ALS Kit, AED, O2, OTC meds				
	Medical Emergency Channel:			Command 7,8,9 (Linked)				
	ETA for Ambulance to Scene:							
	Air:			NA				
	Ground:			15 Min				
	Approved Heli-Spot:			NA				
	Lat:			NA				
Long:			NA					
BRANCH I	EMS Responders & Capability:			REMS 1 Caitlin Lucia +3 (H-1) 443-699-2512 MEDIC 4 Nathan Etherington. (H-1) 360-969-1251 MEDIC 1 Remington Becker (DP-36) 360-903-8612 MEDIC 3 Adam Lathrop (Moore Point) 425-531-0469				
	Equipment Available on Scene:			ALS Kit, Cardiac Monitor/Defib, O2, Rescue gear				
	Medical Emergency Channel:			Command 7,8,9 (Linked)				
	ETA for Ambulance to Scene:							
	Air:			2 hr				
	Water/Ground:			3 hr				
	Approved Heli-Spot:							
	H-1 48° 10.813 N			LUCERNE 48° 12.1624 N				
120° 31.9242 W			120° 35.4476 W					
BRANCH II	EMS Responders & Capability:			MEDIC 2 Joel Bower (Snow Park) 360-461-7390				
	Equipment Available on Scene:			ALS Kit, Defib, O2				
	Medical Emergency Channel:			Command 7,8,9 (Linked)				
	ETA for Ambulance to Scene:							
	Air:			2 hr				
	Ground:			3 hr				
	Approved Heli-Spot:							
	Lat:							
Long:								
Prepared By (Medical Unit Leader)		Date	Reviewed By (Safety Officer)			Date		
James Brown MEDL		06/14/24	Ray Hershey SOF2			06/14/24		
Signature: <i>James Brown</i>			Signature: <i>Ray Hershey</i>					

# MEDICAL PLAN (ICS 206 WF)

Controlled Unclassified Information//Basic

## Medical Incident Report

**FOR A NON-EMERGENCY INCIDENT, WORK THROUGH CHAIN OF COMMAND TO REPORT AND TRANSPORT INJURED PERSONNEL AS NECESSARY.**

**FOR A MEDICAL EMERGENCY: IDENTIFY ON-SCENE INCIDENT COMMANDER BY NAME AND POSITION AND ANNOUNCE "MEDICAL EMERGENCY" TO INITIATE RESPONSE FROM IMT COMMUNICATIONS/DISPATCH.**

Use the following items to communicate situation to communications/dispatch.

1. CONTACT COMMUNICATIONS / DISPATCH (**Verify correct frequency prior to starting report**)

*Ex: "Communications, Div. Alpha. Stand-by for Emergency Traffic."*

2. INCIDENT STATUS: *Provide incident summary (including number of patients) and command structure.*

*Ex: "Communications, I have a Red priority patient, unconscious, struck by a falling tree. Requesting air ambulance to Forest Road 1 at (Lat./Long.) This will be the Trout Meadow Medical, IC is TFLD Jones. EMT Smith is providing medical care."*

Severity of Emergency / Transport Priority	<input type="checkbox"/> RED / PRIORITY 1 Life or limb threatening injury or illness. Evacuation need is IMMEDIATE <i>Ex: Unconscious, difficulty breathing, bleeding severely, 2<sup>o</sup> – 3<sup>o</sup> burns more than 4 palm sizes, heat stroke, disoriented.</i> <input type="checkbox"/> YELLOW / PRIORITY 2 Serious Injury or illness. Evacuation may be DELAYED if necessary. <i>Ex: Significant trauma, unable to walk, 2<sup>o</sup> – 3<sup>o</sup> burns not more than 1-3 palm sizes.</i> <input type="checkbox"/> GREEN / PRIORITY 3 Minor Injury or illness. Non-Emergency transport <i>Ex: Sprains, strains, minor heat-related illness.</i>	
Nature of Injury or Illness & Mechanism of Injury		<i>Brief Summary of Injury or Illness (Ex: Unconscious, Struck by Falling Tree)</i>
Evacuation Request		<i>Air Ambulance / Short Haul/Hoist Ground Ambulance / Other</i>
Patient Location		<i>Descriptive Location &amp; Lat. / Long. (WGS84)</i>
Incident Name		<i>Geographic Name + Medical (Ex: Trout Meadow Medical)</i>
On-Scene Incident Commander		<i>Name of on-scene IC of Incident within an Incident (Ex: TFLD Jones)</i>
Patient Care		<i>Name of Care Provider (Ex: EMT Smith)</i>

3. INITIAL PATIENT ASSESSMENT: *Complete this section for each patient as applicable (start with the most severe patient)*

Patient Assessment: See IRPG PAGE 106

Treatment:

4. EVACUATION PLAN:

Evacuation Location (*if different*): (*Descriptive Location (drop point, intersection, etc.) or Lat. / Long.*) Patient's ETA to Evacuation Location:

Helispot / Extraction Site Size and Hazards:

5. ADDITIONAL RESOURCES / EQUIPMENT NEEDS:

*Example: Paramedic/EMT, crews, immobilization devices, AED, oxygen, trauma bag, IV/fluid(s), splints, rope rescue, wheeled litter, HAZMAT, extrication*

6. COMMUNICATIONS: Identify State Air/Ground EMS Frequencies and Hospital Contacts as applicable

Function	Channel Name/Number	Receive (RX)	Tone/NAC *	Transmit (TX)	Tone/NAC *
COMMAND					
AIR-TO-GRND					
TACTICAL					

7. CONTINGENCY: **Considerations:** *If primary options fail, what actions can be implemented in conjunction with primary evacuation method? Be thinking ahead..*

8. ADDITIONAL INFORMATION: *Updates/Changes, etc.*

**REMEMBER:** Confirm ETAs of resources ordered. Act according to your level of training. Be Alert. Keep Calm. Think Clearly. Act Decisively.