

# Pioneer Incident Action Plan

**Sunday June 16, 2024**

Morning Radio Briefing: 0700

Operational Period: 0600-2200

**WA-SES-000173**

**USFS PNRZ79 (1522) - DOI RZ79 - DNR 221-LDW**



**Maps-IAP-Check-In**



## Health & Safety Message

### **Bears, Rattlesnakes, Bees, Mice and Pack Rats**

1. Bears are in the area. Pack all garbage and left over food off the line. Pack it to Lucerne FOB and dispose of it in dumpster. Do not leave food in a tent or line gear.
2. All garbage not disposed of properly will attract bears, mice and pack rats. They are very abundant in the fire area. They will eat through your line gear.
3. Rattlesnakes are present in the fire area. Do not stick your hands under rocks and down trees or logs. In this cool weather they may be out sunning themselves. They are very abundant around Antalon Lake.
4. If allergic to bees make sure that crew members know. Carry an EpiPen as prescribed by your doctor. Also tell the medical personnel in your divisions. You may carry Benadryl to treat a bee sting if you don't know or have never been stung. You may be allergic even if you have been stung before. Each sting is different.

Public traffic has increased on the 8200 road. Drive defensively and assume on coming traffic in the area. Dump trucks have the right of way whether going up or down. Grab nearest turnout and wait for them. Beware of soft shoulders.

## Notes

Please Send Photos To  
2024.pioneer@firenet.gov

	Ground	Air
FS:		
DNR:		
OSC:		
FS AA:		
DNR AA:		


## FINANCE MESSAGE

**Finance Email:** [2024.pioneer.finance@firenet.gov](mailto:2024.pioneer.finance@firenet.gov)

**Finance Phones:** *Equipment (208) 891-6877 & TIME (208) 891-8036*

**This incident requires electronic documentation.** Please email your time to the address above. Scanned PDF's please, no.jpeg's. Feel free to call finance for help if needed. Scanners are also available at ICP.

### Required Documents

Overhead, Agency Crews & Cooperators	Contract Resources
<b>Finance docs needed:</b> Resource Order, Manifest, Cooperative Agreement, Casual Hire Form w/ECI# (as applicable)	<b>Finance docs needed:</b> Resource Order, Manifest, Full Contract/Agreement, Certifications ( <i>if required</i> ) Pre-Inspection
<b>Daily:</b> CTRs, Shift Tickets	<b>Daily:</b> CTRs, Shift Tickets, receipts (claims, etc.) <b>NOTE: Document travel times and odometer readings</b>
<b>Demob:</b> Signed OF-288; Signed OF-286	<b>Demob:</b> Contractor Evaluations, Shift Tickets, receipt(s) for Addition/Deductions, Post-Inspection, Signed OF-286
<b>Additional Incident Information:</b>   Cooperators and AD's... <b>PLEASE</b> email us your agreements!	<b>Please call finance regarding issues with your time:</b> O-15 James, Matthew      O-49 Zemke, Jeremy O-16 Gregory, Spencer    O-67 Lathrop, Adam O-24 Cronk, Charlie        C-2 Wenatchee River

Incident Name: **Pioneer**  
 Incident Number: **WA-SES-000173**  
 Financial codes:  
 WA DNR – **221-LDW**  
 DOI – **RZ79**  
 USDA – **PNRZ79 (1522)**

**Please make sure you check in using QR code on the front of the IAP and then email your time daily.**  
**THANK YOU!!**

CHECK-IN	DEMOB
Please complete the virtual check-in process via the QR code on the front cover.  You are not checked in until you provide the following: <ul style="list-style-type: none"> <li>• Red Cards</li> <li>• Roster/Manifest</li> </ul> <b>Please email documents to:</b> <a href="mailto:2024.pioneer.demob@firenet.gov">2024.pioneer.demob@firenet.gov</a>	<b>Fliers complete the “Air Travel Request” via the QR code on the front cover 72 hours prior to flight date.</b> <ul style="list-style-type: none"> <li>• Return supplies to the Cache</li> <li>• Return radios, antennas, etc., to Communications</li> <li>• Contact Finance about closing out your paperwork</li> </ul> <b>Once the above items have been completed, SCAN the QR code on the front cover and complete the demob questions.</b>

If you have any questions about Check-In or DEMOB please email demob at [2024.pioneer.demob@firenet.gov](mailto:2024.pioneer.demob@firenet.gov) or call 509-661-5372. Please include your request number in the subject line when emailing.

<b>INCIDENT OBJECTIVES</b>	<b>1. Incident Name</b> Pioneer	<b>2. Date</b> June 15, 2024	<b>3. Time</b> 2000
<b>4. Operational Period: 06/16 0600-2200</b>			
<b>5. General Objectives:</b> Implement suppression strategies and objectives for short/long-term planning. <ul style="list-style-type: none"> <li>• Provide for firefighter and public safety through hazard identification and application of a shared risk management process.</li> <li>• Coordinate public information to provide timely updates to agency partners, cooperators, and the public.</li> <li>• Coordinate suppression activities with READs to identify current and future impacts on the landscape.</li> <li>• Effectively manage and track costs with daily IAP reporting.</li> <li>• Coordinate with agency leadership/administrators to ensure effective and efficient management of firefighting resources.</li> <li>• Identify best course of action for firefighter support, both logistically and operationally.</li> </ul> Operational objectives: <ul style="list-style-type: none"> <li>• Implement a point protection strategy to protect private and federal infrastructure.</li> <li>• Triage additional infrastructure within fire planning area to minimize the potential impact to these sites.</li> <li>• Communicate with local law enforcement officials to ensure current and potential evacuations is coordinated.</li> <li>• Evaluate current fire conditions, identify/utilize features that could lead to fire growth, and validate strategic indirect (new/historical) control lines.</li> <li>• Utilize appropriate tactics for current/future fire environment and the predominantly wilderness landscape .</li> <li>• Develop a long-term strategic plan for suppression of the incident.</li> </ul>			
<b>5a. Incident Requirements</b> <ul style="list-style-type: none"> <li>• Provide Agency Administrator updates and briefings on incident status.</li> <li>• Firefighting operations will implement tactics that offer the highest probability of success to minimize impacts to the landscape and minimize unnecessary exposure to firefighters.</li> <li>• Incident values are firefighter and public safety, critical infrastructure, private land and natural resources.</li> </ul>			
<b>5b. Leaders Intent</b> <ul style="list-style-type: none"> <li>• <b>Safety:</b> Firefighter, public, boat and aviation safety will be addressed through DRA process.</li> <li>• <b>ISAP:</b> Engage agencies with strategic alignment process, for shared values at risk.</li> <li>• <b>Communication:</b> Keep Agency Administrators and firefighters informed of strategic actions, accomplishments, and challenges.</li> <li>• <b>Operations:</b> Make informed strategic/tactical decisions suppressing the fire in the right geographic locations with the appropriate resources and highest probability of success.</li> <li>• <b>Stakeholders:</b> Collaborate with local partners, officials, and landowners to provide situational updates pertinent to the fire.</li> <li>• <b>Logistics:</b> Provide support ensuring food, water, and shelter for incident responders.</li> <li>• <b>Human Resources:</b> Ensure that all incident personnel are treated with dignity and respect, while having zero tolerance for harassment, alcohol, or illegal drug use.</li> <li>• <b>Public Information:</b> Provide timely and accurate information through media outlets, briefings, and social platforms as needed.</li> <li>• <b>Finance:</b> Monitor and communicate incident cost associated with meeting incident objectives.</li> <li>• <b>Planning:</b> Provide incident documentation, resource tracking, and meeting management.</li> </ul>			
<b>6. Weather Forecast &amp; General Safety Message for Period – See Attached</b>			
<b>7. Attachments (mark if attached)</b>			
<input checked="" type="checkbox"/> Organization List - ICS 203	<input checked="" type="checkbox"/> Weather Forecast	<input checked="" type="checkbox"/> Safety Message	
<input checked="" type="checkbox"/> Div. Assignment Lists - ICS204	<input checked="" type="checkbox"/> Fire Behavior Forecast	<input type="checkbox"/> Medical Emergency Com Plan	
<input checked="" type="checkbox"/> Communications Plan - ICS 205	<input checked="" type="checkbox"/> Incident Map	<input type="checkbox"/>	
<input checked="" type="checkbox"/> Medical Plan - ICS 206	<input checked="" type="checkbox"/> Air Operations - ICS 220	<input type="checkbox"/>	
<b>9. Prepared by</b> Aileen Nichols	<b>9. Approved by (Incident Commander)</b> <i>Brian Gales</i>		

<b>ORGANIZATION ASSIGNMENT LIST</b>	
1. Incident Name <b>Pioneer</b>	
2. Date <b>June 15, 2024</b>	3. Time <b>1830</b>
4. Operational Period <b>June 16, 2024 0600-2200</b>	
Position	Name
<b>NWIMT 13 LWD 6/24/2024</b>	
5. Incident Commander and Staff	
Incident Commander	<b>Brian Gales (O-8.1)</b>
Deputy Incident Commander	<b>Eric Riener (O-8.2)</b>
Liaison Officer	<b>Bill Neckels (O-8.3)</b>
ISAP	<b>Robert Burnside (O-14)</b>
Information Officer	<b>Eric Waters (O-8.5)</b>
Safety Officer	<b>Ray Hershey (O-8.4)</b>
Safety Officer - t	<b>Jeremy Maghan (O-62)</b>
6. Agency/Organization Representative(s):	
USFS Oak/Wen Agency Administrator	<b>Kari Grover-Wier</b>
USFS Oak/Wen Agency Administrator - t	<b>Paul Willard</b>
DNR Agency Administrator	<b>Larry Leach</b>
DNR Deputy Agency Administrator	<b>Wyatt Leighton</b>
LEAD READ	<b>Brigitte Ranne</b>
REAF - t	<b>Hector Rodriguez</b>
7. Planning Section	
Plans Chief	<b>Aileen Nichols (O-8.14)</b>
Resources Unit	<b>Meredith Butcher (O-8.15)</b>
Status Check-In/ Demob Unit	<b>Laura Backlund (O-8.20)</b>
Situation Unit	<b>Laurie Bergvall (O-8.18)</b>
Fire Behavior Analyst	<b>Dean Warner (O-8.19)</b>
Incident Meteorologist	<b>Trent Smith (O-58)</b>
Documentation Unit - Virtual	<b>Deidre Smith (O-59)</b>
GIS Specialist	<b>Kayla Fermin (O-8.16)</b>
GIS Specialist	<b>Austin Lewandowski (O-50)</b>
Computer Specialist	<b>Dave Johnson (O-8.17)</b>
Computer Specialist	<b>George Jenkins (O-64)</b>
8. Logistics Section	
Logistics Chief	<b>Bryan Swanberg (O-8.22)</b>
Deputy Logistics Chief	<b>Cindy Preston (O-8.21)</b>
Deputy Logistics Chief	<b>Dave Willis (O-8.23)</b>
Supply Unit Leader	<b>Jon Byerly (O-8.25)</b>
Ordering Manager	<b>Robert Yarnall (O-8.30)</b>
Communications Unit Ldr - t	<b>Bruce Hanna (O-8.27)</b>
Incident Comm Mgr	<b>Trina Contreras (O-8.31)</b>
Com Tech	<b>Brian Wolfenburger (O-8.32)</b>
Food Unit Leader	<b>Pat Young (O-8.26)</b>
Facilities Unit Leader	<b>Keith Yonaka (O-8.24)</b>
Medical Unit Leader	<b>James Brown (O-8.28)</b>
Ground Support Unit	<b>William Braddy (O-8.29)</b>
Receiving/Distribution Mgr - t	<b>Karl Peterson (O-31)</b>
Base Camp Manager	<b>Carl Schilter (O-12)</b>
Security Manager	<b>Chris Dodds (O-11)</b>
Equipment Manager	<b>Charlie Carmichael (O-23)</b>

9. Operations Section	
Operations (Field)	<b>John Spencer (O-8.6)</b> <b>Whitney Machado - t (O-8.41)</b>
Operations (Planning)	<b>Tom Hall (O-13)</b>
Operations	<b>Brad Reed (O-8.9)</b>
a. Branch I	
Branch Director	
	<b>Matt James (O-15)</b>
Division Supervisor	<b>A</b> <b>Erik Thorp (O-53)</b> <b>Chris Carr - t (O-54)</b>
Division Supervisor	<b>D</b> <b>Ben Lippert (O-103)</b>
Division Supervisor	<b>Z</b> <b>Robert Boles (O-8.13)</b> <b>Pat Chism - t (O-26)</b>
Group Supervisor	<b>Structure</b> <b>Charlie Cronk (O-24)</b>
b. Branch II	
Branch Director	
	<b>Spencer Gregory (O-16)</b>
Division Supervisor	<b>S</b> <b>Anna Graves (O-8.10)</b>
Group Supervisor	<b>Roads</b> <b>Andy Hall (O-106)</b> <b>Aaron Bruning - t (O-69)</b>
c.	
d. Air Operations Branch	
Air Operations	<b>Nancy Barker (O-8.8)</b> <b>Callan Wilkins - t (O-17)</b>
Air Support Group	<b>Jesse Machado - t (O-38)</b>
Helibase Manager	<b>David Kessler - t (O-39)</b>
10. Finance Section	
Finance Chief	<b>Veronika Klukas (O-8.33)</b>
Deputy Finance Chief	<b>Paula James (O-8.34)</b>
Cost Unit - Virtual	<b>Lori Price (O-8.35)</b>
Time Unit	<b>Angie Chapman (O-8.36)</b>
Personnel Time Recorder	<b>Heather Fitzpatrick (O-8.38)</b>
Proc Unit Leader	<b>Eric Soto (O-8.37)</b>
COMPS/CLAIMS	<b>Laurette Gaylord (O-45)</b>
Incident Cont. Project Insp	<b>Stan Zazado (O-8.39)</b>
In-Box Manager	<b>Emily Cohn (O-46)</b>
<b>PREPARED BY: Meredith Butcher</b>	





# Fire Weather Forecast



**FORECAST NO:** 04  
**PREDICTION FOR:** 24 Hr Shift  
**SHIFT DATE:** Sunday 6/16/2024

**INCIDENT:** Pioneer Fire

**SIGNED:** Trent Smith *Trent P. Smith*

**TIME AND DATE ISSUED:** 6/15/2024 1800 hrs

Incident Meteorologist (IMET)

### Discussion:

A second low pressure system will be moving through the region today causing a band of precipitation to move southward out of British Columbia. The Sawtooth Ridge is anticipated to cause some downsloping effects, limiting the amount of precipitation that reaches the fire. Temperatures will be similar to yesterday with slightly higher humidity. The winds will continue to be out of the northwest, but will not be as strong as the past couple of days.

### WEATHER FORECAST FOR TODAY:

**SKY/WEATHER:** Mostly clear becoming mostly cloudy in the afternoon. 40% chance of rain in the afternoon.

**Max Temperature:** 56 to 61.

**Min RH:** 37 to 42 percent.

#### **20 ft WINDS:**

**Lower Valleys:** Northwest 5 to 10 mph.

**Mid-slopes and Ridges:** Northwest 5 to 10 mph gusts to 20 mph.

**HAINES INDEX:** 2 Very Low.

**TRANSPORT WINDS:** NW 12 mph.

**INVERSION:** 1500 ft inversion lifting to 6000 ft by afternoon.

### TONIGHT:

**SKY/WEATHER:** Mostly cloudy becoming partly cloudy after midnight. 20% chance of rain in the evening.

**Min Temperature:** Lower elevation 48 to 53 and midslope/ridges 39 to 44.

**Max RH:** 65 to 70 percent.

#### **20 ft Wind:**

**Valleys/Lower Slopes:** Northwest 5 to 10 mph decreasing to around 5 mph after midnight.

**Mid-Slopes and Ridges:** Northwest 5 to 10 mph with gusts to 20 mph.

**INVERSION:** Developing after 2000 hrs near 1500 ft.

### MONDAY:

**SKY/WEATHER:** Partly cloudy. 20% chance of rain showers in the afternoon.

**Max Temperature:** High 62 to 67.

**Min RH:** 33 to 38 percent.

#### **20 ft WINDS:**

**Lower Valleys:** Northwest 5 to 10 mph. Gusts to 20 mph in the afternoon.

**Mid-slopes and Ridges:** Northwest 5 to 10 mph gusts to 25 mph.

**HAINES INDEX:** 3 Very Low.

**TRANSPORT WINDS:** NW 15 mph.

Yesterdays observations thru 1700	Min Temp	Max RH	Max Temp	Min RH	Peak Wind	Precipitation
<b>Stehekin RAWS (1230')</b>	54	59%	61	31%	24 mph	0.00
<b>Lake Chelan Airport (1260')</b>	55	44%	64	24%	37 mph	0.00
<b>Entiat RAWS (2825')</b>	49	52%	57	33%	44 mph	0.00
<b>Camp 4 RAWS (3156')</b>	46	65%	60	32%	22 mph	0.00

Weather observations can be texted to 406-360-6330 or emailed to trent.smith@noaa.gov

## Fire Behavior Forecast # 5

<b>Name of Incident:</b> Pioneer Fire WA-SES-000173	<b>Administrative Unit:</b> SE Region DNR / Okanagan-Wenatchee NF
<b>Date &amp; Time Issued:</b> 1900 – 6/15/2024	<b>Operational Period:</b> Day 6/16/2024
<b>FBAN:</b> Dean Warner	<b>Signed:</b>

**Weather Summary** - See attached Pioneer Fire Weather Forecast.  
Cool, chance of rain, gusty NW winds.

### Fire Behavior Summary

<b>General –</b> <u>Spotting potential:</u> <b>0.25 + mi.</b> <u>Probability of Ignition:</u> <b>60%</b> <u>Haines Index:</u> <b>3 (low)</b> <u>LAL:</u> 1 <u>ERC – Y:</u> <b>39 (72 percentile)</b>	<b>FUEL MODEL</b>	<b>Maximum ROS</b>	<b>Backing ROS</b>	<b>Maximum Flame length</b>	<b>Backing Flame length</b>
	GR2 - Moderate load grass shrub	<b>13 ch/hr</b>	<b>3 ch/hr</b>	<b>1 feet</b>	<b>1 feet</b>
	SH2 - Moderate load shrub	<b>7 ch/hr</b>	<b>3 ch/hr</b>	<b>2 feet</b>	<b>1 feet</b>
	TU5 – Very high load timber shrub	<b>16 ch/hr</b>	<b>6 ch/hr</b>	<b>7 feet</b>	<b>2 feet</b>
	TL8 – Long needle timber litter	<b>12 ch/hr</b>	<b>4 ch/hr</b>	<b>3 feet</b>	<b>1 feet</b>

#### **GENERAL**

Today's conditions will support active fire spread. Fire is now established in Meadow Creek on the north side of the fire and Rattlesnake Creek on the south side of the fire. To the east, the fire continues to make progress to the ridge line of Skookum Puss Mountain. Spotting has been observed up to one quarter mile and could exceed that today.

**Topography:** This fire lies on the north slopes of Lake Chelan on a dry southwest aspect. Steep rugged terrain dominates the fire environment. Rolling material and short upslope fire runs will pose a safety risk. Several natural barriers in the form of rock outcrops and scree slopes are present in the fire area. Expect slope reversals to be more dramatic than usual as this type of fire movement will present in severe contrast from downhill backing rate of spread. Rolling debris will enhance backing rates of spread.

**Fuels:** The fire is burning in the old Rex Creek burn scar from 2001. This 23 year old fire scar has left behind a mosaic of fuels including a moderate load of heavy fuel, which is dry enough to sustain fire spread. Rock outcrops can disrupt the fuel continuity but dry grass and sparse dead and downed material in rocky areas can still maintain fire progression.

**ERC:** Due to the time of year, Energy Release Component values remain below the 90<sup>th</sup> percentile. The dry aspect, lake winds, and steep slopes offer ample opportunity for this fire to outperform typical fire indices.

#### **SPECIFIC**

**North Side:** Expect the fire in Meadow Creek to burn up to the north into a no-name drainage but fire progression through the Round Lake saddle will be hampered with steady NW winds.

**South Side:** Expect fire to establish in the Prince Creek valley. Prince Creek is flowing strong this time of year so spotting represents the best chance for the fire to cross the creek. Watch for spotting on the lower slopes where the ridge to valley difference is the least.

**Ridgetop:** Fire will continue to advance to the top of Skookum Puss Mountain and associated ridgeline that defines the west side of Prince Creek.

#### **Air Ops/Smoke Dispersion**

Smoke from active fire may impact visibility for air operations.

#### **Safety**

Short intense fire runs and spotting in excess of one quarter mile is possible today. Make sure you know where your safety zones are located and the time it takes to get there.

<b>DIVISION ASSIGNMENT LIST</b>			1. Branch <b>I</b>		2. Division <b>A</b>	
3. Incident Name <b>Pioneer</b>			4. Operational Period Date: <b>06/16/2024</b> Time: <b>0600-2200</b>			
5. Operations Personnel						
Operations Chief		<b>John Spencer Whitney Machado - t</b>		Branch Director		<b>Matt James</b>
Safety Officer		<b>Ray Hershey</b>		Division Supervisor		<b>Eric Thorp Chris Carr - t</b>
6. Resources Assigned this Period						
Strike Team/Task Force/Resource Designator		Leader	# Persons	LWD	Drop Off PT./Time	Pick Up PT./Time
<b>1</b>	<b>C-8 CRW1 Union IHC</b>	<b>Eric Jorgenson</b>	<b>24</b>	<b>6/27</b>		
<b>2</b>	<b>C-9 CRW1 Zigzag IHC</b>	<b>Sandra Sperry</b>	<b>25</b>	<b>6/28</b>		
<b>3</b>	<b>C-4 CRW1 LaGrande IHC</b>	<b>Juan Elquezabal</b>	<b>21</b>	<b>6/23</b>		
<b>4</b>	<b>C-2 CR2I Wenatchee River C74</b>	<b>Ben Marquart</b>	<b>15</b>	<b>6/24</b>		
<b>5</b>						
<b>6</b>	<b>O-49 TFLD</b>	<b>Jeremy Zemke</b>	<b>1</b>	<b>6/26</b>		
<b>7</b>	<b>O-52 TFLD - t</b>	<b>Dante Ybarra</b>	<b>1</b>	<b>6/26</b>		
<b>8</b>						
<b>9</b>	<b>O-67 MEDIC 3</b>	<b>Adam Lathrop</b>	<b>1</b>	<b>6/27</b>		
<b>10</b>	<b>O-43.4 EMT</b>	<b>Delaney Snaadt</b>	<b>1</b>	<b>6/25</b>		
<b>11</b>						
<b>12</b>	<b>O-63 SOF2</b>	<b>Larry Wright</b>	<b>1</b>	<b>6/26</b>		
<b>13</b>						
<b>14</b>						
<b>15</b>						
<b>16</b>						
<b>17</b>						
<b>18</b>						
		<b>Meal count</b>	<b>90</b>			
7. Control Operations: <b>Task: Contain fire spread to the northwest where terrain and fuels allow for highest probability of success. Assess fire perimeter progression to the north and east at higher elevations. Implement point protection efforts on federal &amp; private infrastructure.</b>  <b>Purpose: To slow fire progression, provide time for suppression tactics, and prep around critical values.</b>  <b>End state: Minimize fire impacts to critical values including private inholdings and Forest Service infrastructure.</b>						
8. Special Instructions: <b>In large or long term spike camps use helicopters, boats, or pack stock to deliver portable backcountry latrines and remove human waste if necessary. If camp does not have adequate pack, boat, or air support for human waste management, establish community latrines well away from water sources and common areas. Use human waste bags, if necessary.</b>  <b>Minimize ground disturbance on the Moore Point and Meadow Creek alluvial fans in order to protect sensitive resources.</b>  <b>24, 48, 72 hour planning/logistical support will be paramount to our success.</b>						
9. Division/Group Communication Summary						
<b>See Communications Plan</b>						
Prepared by (Resource Unit Ldr) <i>Meredith Butcher</i>			Approved by (Planning Sect. Ch.) <i>Aileen Nichols</i>		Date <b>06/15/2024</b>	Time <b>2000</b>

<b>DIVISION ASSIGNMENT LIST</b>			1. Branch <b>I</b>		2. Division <b>D</b>	
3. Incident Name <b>Pioneer</b>			4. Operational Period Date: <b>06/16/2024</b> Time: <b>0600-2200</b>			
5. Operations Personnel						
Operations Chief		<b>John Spencer Whitney Machado - t</b>		Branch Director		<b>Matt James</b>
Safety Officer		<b>Ray Hershey</b>		Division Supervisor		<b>Ben Lippert</b>
6. Resources Assigned this Period						
Strike Team/Task Force/Resource Designator		Leader	# Persons	LWD	Drop Off PT./Time	Pick Up PT./Time
1						
2						
3						
4						
5						
6						
7						
8						
9						
10						
11						
12						
13						
14						
15						
16						
17						
18						
		<b>Meal count</b>				
7. Control Operations: <b>Task: Evaluate and assess structures from Flick Creek to the community of Stehekin. Look for opportunities to contain fire spread in and around Flick Creek area where terrain and fuels allow for high probability of success.</b>  <b>Purpose: Minimize fire impacts to critical values including private inholdings, the town of Stehekin, and Forest Service infrastructure.</b>  <b>End state: Critical values including private inholdings, the town of Stehekin, and Forest Service infrastructure are not impacted by the Pioneer fire, while minimizing fire impacts and acres burned utilizing historic wildfire control features and natural barriers.</b>						
8. Special Instructions: <b>In large or long term spike camps use helicopters, boats, or pack stock to deliver portable backcountry latrines and remove human waste if necessary. If camp does not have adequate pack, boat, or air support for human waste management, establish community latrines well away from water sources and common areas. Use human waste bags, if necessary.</b>  <b>24, 48, 72 hour planning/logistical support will be paramount to our success.</b>						
9. Division/Group Communication Summary <b>See Communications Plan</b>						
Prepared by (Resource Unit Ldr) <i>Meredith Butcher</i>		Approved by (Planning Sect. Ch.) <i>Aileen Nichols</i>		Date <b>06/15/2024</b>	Time <b>2000</b>	

<b>DIVISION ASSIGNMENT LIST</b>			1. Branch <b>I</b>		2. Division <b>Z</b>	
3. Incident Name <b>Pioneer</b>			4. Operational Period Date: <b>06/16/2024</b> Time: <b>0600-2200</b>			
5. Operations Personnel						
Operations Chief		<b>John Spencer Whitney Machado - t</b>		Branch Director		<b>Matt James</b>
Safety Officer		<b>Ray Hershey</b>		Division Supervisor		<b>Robert Boles Pat Chism - t</b>
6. Resources Assigned this Period						
Strike Team/Task Force/Resource Designator		Leader	# Persons	LWD	Drop Off PT./Time	Pick Up PT./Time
<b>1</b>	<b>O-48 TFLD</b>	<b>Jeff Coburn</b>	<b>1</b>	<b>6/26</b>		
<b>2</b>						
<b>3</b>	<b>C-3 CRW1 Baker River IHC</b>	<b>Gary Chicks</b>	<b>23</b>	<b>6/22</b>		
<b>4</b>						
<b>5</b>	<b>Boise Helitack</b>	<b>Jacob Campbell</b>	<b>5</b>			
<b>6</b>						
<b>7</b>	<b>O-43 REMS 1</b>	<b>Caitlin Lucia</b>	<b>4</b>	<b>6/25</b>		
<b>8</b>	<b>O-75 MEDIC 4</b>	<b>Nathan Etherington</b>	<b>1</b>	<b>6/28</b>		
<b>9</b>	<b>O-51 MEDIC 1</b>	<b>Remington Becker</b>	<b>1</b>	<b>6/26</b>		
<b>10</b>						
<b>11</b>	<b>O-20 SOFR</b>	<b>Jeff Higen</b>	<b>1</b>	<b>6/21</b>		
<b>12</b>						
<b>13</b>						
<b>14</b>						
<b>15</b>						
<b>16</b>						
<b>17</b>						
<b>18</b>						
<b>19</b>						
<b>20</b>						
		<b>Meal count</b>	<b>36</b>			
7. Control Operations: <b>Task: Contain fire spread to the southwest where terrain and fuels allow for high probability of success. Assess fire perimeter progression to the west/southwest at higher elevations.</b>  <b>Purpose: To slow fire progression, provide time for suppression tactics, and prep around critical values.</b>  <b>End state: Minimize fire impacts to critical values including private inholdings and Forest Service infrastructure.</b>						
8. Special Instructions: <b>In large or long term spike camps use helicopters, boats, or pack stock to deliver portable backcountry latrines and remove human waste if necessary. If camp does not have adequate pack, boat, or air support for human waste management, establish community latrines well away from water sources and common areas. Use human waste bags, if necessary.</b>  <b>24, 48, 72 hour planning/logistical support will be paramount to our success.</b>						
9. Division/Group Communication Summary <b>See Communications Plan</b>						
Prepared by (Resource Unit Ldr) <i>Meredith Butcher</i>		Approved by (Planning Sect. Ch.) <i>Aileen Nichols</i>		Date <b>06/15/2024</b>	Time <b>2000</b>	

<b>DIVISION ASSIGNMENT LIST</b>			1. Branch <b>I</b>		2. Group <b>Structure</b>	
3. Incident Name <b>Pioneer</b>			4. Operational Period Date: <b>06/16/2024</b> Time: <b>0600-2200</b>			
5. Operations Personnel						
Operations Chief		<b>John Spencer Whitney Machado - t</b>		Branch Director		<b>Matt James</b>
Safety Officer		<b>Ray Hershey</b>		Division Supervisor		<b>Charlie Cronk</b>
6. Resources Assigned this Period						
	Strike Team/Task Force/Resource Designator	Leader	# Persons	LWD	Drop Off PT./Time	Pick Up PT./Time
<b>1</b>	<b>C-1 CRW2 DNR Crew 411</b>	<b>Lyle</b>	<b>16</b>	<b>6/22</b>		
<b>2</b>						
<b>3</b>	<b>O-41 WFM1 Eagle Cap</b>	<b>Gabe Hale</b>	<b>10</b>	<b>6/25</b>		
<b>4</b>						
<b>5</b>	<b>O-50 TFLD Boat Coordinator</b>	<b>Todd Olson</b>	<b>1</b>	<b>6/26</b>	<b>Lucerne</b>	
<b>6</b>	<b>O-20 TFLD-t Boat Coordinator</b>	<b>Katy Giddings</b>	<b>1</b>		<b>ICP</b>	
<b>7</b>						
<b>8</b>						
<b>9</b>						
<b>10</b>						
<b>11</b>						
<b>12</b>						
<b>13</b>						
<b>14</b>						
<b>15</b>						
<b>16</b>						
<b>17</b>						
<b>18</b>					<b>25 People @ DP36 Canoe Ck</b>	
<b>19</b>					<b>3 People @ DP34 Prince Ck</b>	
		<b>Meal count total</b>	<b>28</b>			
7. Control Operations: <b>Task: Point protection at inholdings and trail system infrastructure between Prince Creek and Cascade Creek.</b> <b>Purpose: To protect inholdings and infrastructure.</b> <b>End state: Inholdings and infrastructure are secure from fire impact.</b>						
8. Special Instructions: <b>In large or long term spike camps use helicopters, boats, or pack stock to deliver portable backcountry latrines and remove human waste if necessary. If camp does not have adequate pack, boat, or air support for human waste management, establish community latrines well away from water sources and common areas. Use human waste bags, if necessary.</b> <b>Boat Coordinator will be located at Fields Point.</b> <b>24, 48, 72 hour planning/logistical support will be paramount to our success.</b>						
9. Division/Group Communication Summary						
<b>See Communications Plan</b>						
Prepared by (Resource Unit Ldr) <i>Meredith Butcher</i>			Approved by (Planning Sect. Ch.) <i>Aileen Nichols</i>		Date <b>06/15/2024</b>	Time <b>2000</b>

<b>DIVISION ASSIGNMENT LIST</b>			1. Branch <b>II</b>		2. Division <b>S</b>	
3. Incident Name <b>Pioneer</b>			4. Operational Period Date: <b>06/16/2024</b> Time: <b>0600-2200</b>			
5. Operations Personnel						
Operations Chief		<b>John Spencer Whitney Machado - t</b>		Branch Director		<b>Spencer Gregory</b>
Safety Officer		<b>Ray Hershey</b>		Division Supervisor		<b>Anna Graves</b>
6. Resources Assigned this Period						
Strike Team/Task Force/Resource Designator		Leader	# Persons	LWD	Drop Off PT./Time	Pick Up PT./Time
<b>1</b>	<b>O-89 TFLD-t</b>	<b>Brandon Asher</b>	<b>1</b>	<b>6/28</b>		
<b>2</b>						
<b>3</b>	<b>C-10 CR2I Methow Valley IA</b>	<b>Jaeger Holt</b>	<b>22</b>	<b>6/29</b>		
<b>4</b>						
<b>5</b>	<b>E-93 DZR3 Batchelor Excavation</b>	<b>Narce Christiansen</b>	<b>2</b>	<b>6/28</b>		
<b>6</b>						
<b>7</b>	<b>E-18 UTV</b>					
<b>8</b>						
<b>9</b>						
<b>10</b>						
<b>11</b>						
<b>12</b>						
<b>13</b>						
<b>14</b>						
<b>15</b>						
<b>16</b>						
<b>17</b>						
<b>18</b>						
<b>19</b>						
<b>20</b>						
		<b>Meal count</b>	<b>25</b>			
7. Control Operations: <b>Task: Scout division S for secondary control line opportunities (8200 Rd, Coyote Ridge, Nelson Butte and Gold Creek 600 Rd).</b>  <b>Purpose: To identify and inventory historic control lines from past fire history.</b>  <b>End state: Potential control lines are identified in alignment with suppression strategy.</b>						
8. Special Instructions:  <b>24, 48, 72 hour planning/logistical support will be paramount to our success.</b>						
9. Division/Group Communication Summary  <b>See Communications Plan</b>						
Prepared by (Resource Unit Ldr) <i>Meredith Butcher</i>		Approved by (Planning Sect. Ch.) <i>Aileen Nichols</i>		Date <b>06/15/2024</b>	Time <b>2000</b>	

<b>DIVISION ASSIGNMENT LIST</b>			1. Branch <b>II</b>		2. Group <b>Roads</b>	
3. Incident Name <b>Pioneer</b>			4. Operational Period Date: <b>06/16/2024</b> Time: <b>0600-2200</b>			
5. Operations Personnel						
Operations Chief		<b>John Spencer Whitney Machado - t</b>		Branch Director		<b>Spencer Gregory</b>
Safety Officer		<b>Ray Hershey</b>		Division Supervisor		<b>Andy Hall Aaron Bruning - t</b>
6. Resources Assigned this Period						
Strike Team/Task Force/Resource Designator		Leader	# Persons	LWD	Drop Off PT./Time	Pick Up PT./Time
<b>1</b>	<b>O-83 TFLD</b>	<b>Mark Lewis</b>	<b>1</b>	<b>6/29</b>		
<b>2</b>						
<b>3</b>	<b>O-22 THSP</b>	<b>Rick Long</b>	<b>1</b>	<b>6/24</b>		
<b>4</b>						
<b>5</b>	<b>E-73 WTS1 Strand Tenders</b>	<b>Wade Strand</b>	<b>1</b>	<b>6/27</b>		
<b>6</b>	<b>E-74 WTS2 MVP Team</b>	<b>Dale Conrad</b>	<b>1</b>	<b>6/27</b>		
<b>7</b>	<b>E-75 WTS2 David Rains</b>	<b>Ron Laymance</b>	<b>1</b>	<b>6/27</b>		
<b>8</b>	<b>E-78 WTS2 King Hydroseeding</b>	<b>Don Warden</b>	<b>1</b>	<b>6/27</b>		
<b>9</b>	<b>E-83 WTS2 King Hydroseeding</b>	<b>Joseph Ivie</b>	<b>1</b>	<b>6/27</b>		
<b>10</b>	<b>E-76 WTS2 Mountain View Wildfire</b>	<b>Shawn Beaman</b>	<b>1</b>	<b>6/28</b>		
<b>11</b>						
<b>12</b>	<b>E-71 GRD2 Pettet</b>	<b>Mark Rowe</b>	<b>2</b>	<b>6/27</b>		
<b>13</b>	<b>E-72 GRD2 Scotts Excavating</b>	<b>Lucas Scott</b>	<b>2</b>	<b>6/27</b>		
<b>14</b>						
<b>15</b>	<b>E-69 FTRA Morris Forestry</b>	<b>Jake Wilcox</b>	<b>2</b>	<b>6/29</b>		
<b>16</b>						
<b>17</b>	<b>O-64 MEDIC 2</b>	<b>Joel Bower</b>	<b>1</b>	<b>6/26</b>		
<b>18</b>	<b>O-62 SOFC-t</b>	<b>Jeremiah Maghan</b>	<b>1</b>	<b>6/25</b>		
<b>19</b>						
<b>20</b>	<b>E-19, E-93, E-94 UTVs</b>					
		<b>Meal count</b>	<b>16</b>			
7. Control Operations: <b>Task: Scout and prep 8200 Rd (Grade Creek Rd) to be utilized for mobilization of division S resources.</b>  <b>Purpose: To open the 8200 Rd for use.</b>  <b>End state: 8200 Rd is accessible for fire resources.</b>						
8. Special Instructions:  <b>24, 48, 72 hour planning/logistical support will be paramount to our success.</b>						
9. Division/Group Communication Summary  <b>See Communications Plan</b>						
Prepared by (Resource Unit Ldr) <i>Meredith Butcher</i>		Approved by (Planning Sect. Ch.) <i>Aileen Nichols</i>		Date <b>06/15/2024</b>		Time <b>2000</b>





# INCIDENT RADIO COMMUNICATIONS PLAN (ICS 205)

## Controlled Unclassified Information//Basic

1. Incident Name:		2. Date/Time Prepared:		3. Operational Period:						
<b>PIONEER</b>		Date: 06/15/2024 Time: 21:45		Date/Time From: 06/16/2024 0600 Date/Time To: 06/17/2024 0600						
<b>4. Basic Radio Channel Use:</b>										
Zone Group	Ch #	Function	Channel Name/Trunked Radio	Assignment	RX Freq	RX Tone/NAC	TX Freq	TX Tone/NAC	Mode (A, D, or M)	Remarks
	1	TACTICAL	TAC 1	DIV A	168.0500	123.0	168.0500	123.0	A	
	2	TACTICAL	TAC 2	DIV D & S	168.2000	123.0	168.2000	123.0	A	USE LOW PWR ON RIDGES
	3	TACTICAL	TAC 3	DIV Z	168.6000	123.0	168.6000	123.0	A	
	4	TACTICAL	TAC 4	STRUCTURE	166.7250	123.0	166.7250	123.0	A	
	5	TACTICAL	TAC 5	ROADS	166.7750	123.0	166.7750	123.0	A	
	6	TACTICAL	TAC 6	BOAT	168.2500	123.0	168.2500	123.0	A	
	7	COMMAND	CMD 7	ALL	168.4750	123.0	165.4000	123.0	A	CHELAN BUTTE
	8	COMMAND	CMD 8	ALL	169.5375	123.0	164.7125	123.0	A	OLD MAID MT.
	9	COMMAND	CMD 9	ALL	170.4500	123.0	168.1000	123.0	A	FLORA MT.
	10	COMMAND	CMD 10	RESERVED	170.0125	123.0	165.2500	123.0	A	RESERVED
	11	TACTICAL	OLD MAID	UNASSIGNED	173.0500	146.2	164.9125	136.5	A	OLD MAID MT-LOCAL RPTR
	12	TACTICAL	A/G PRI	ALL DIVS	169.1500	000.0	169.1500	000.0	A	
	13	AIR TO GROUND	A/G SEC	ALL DIVS	168.4000	000.0	168.4000	000.0	A	
	14	AIR TO GROUND	A/G 3	ALL DIVS	166.6125	000.0	166.6125	000.0	A	
	15	AIR TO GROUND	VMED 29	ALL DIVS	155.3475	156.7	155.3475	156.7	A	AIR EMS COORDINATION
	16	AIR TO GROUND	AIRGUARD	ALL DIVS	168.6250	000.0	168.6250	110.9	A	EMERGENCY AIRCRAFT CONTACT
<b>5. Special Instructions: 24 hour staffing: PIONEER COMMUNICATIONS PHONE NUMBER: (208) 891-7870 / CURRENT CLONE "PIE 6-16"</b>										
<b>6. Prepared By COML</b>										
				Name: Bruce Hanna						
				Signature: /s/ Bruce Hanna						
<b>ICS 205</b>										
				IAP Page						
				Date/Time: 6/15/2024 21:54						



# OKANOGAN-WENATCHEE NATIONAL FOREST

## Resource Guidelines for Uplake Fire Suppression

**Fire: Pioneer**

**Location: Pioneer Creek, North shore of Lake Chelan**

**Date: 6/11/2024**

### Resource Advisors

Lead READ: Brigitte Ranne 509-663-6118, [brigitte.ranne@usda.gov](mailto:brigitte.ranne@usda.gov)

REAF trainee: Hector Rodriguez

### **HUMAN SAFETY IS THE HIGHEST PRIORITY FOR EVERY EMERGENCY RESPONSE ACTION**

#### *MIST for Spike Camp and Lucerne Forward Operating Base Management*

- Employ minimum impact suppression tactics (MIST) where feasible, especially in remote or sensitive areas.
- If spike camps are necessary, use existing, or previously impacted campsites where available. If existing campsites are not available; use your local resource advisor to help identify the most resilient sites in rocky or sandy soils. Avoid camping in wet meadows, along streams, or on lake shores.
- In small spike camp situations (not Lucerne), individuals should use the "cat-hole" method of disposing of human waste. Toilet seats should be located a minimum of 200 feet from water sources. Holes should be dug 6-8 inches deep.
- Store food properly so that it is not accessible to wildlife. Consider hanging food in trees at least 15 feet off the ground and 5 feet from the trunk of the tree, or store food in sealable containers. Store food away from the campsite (300 feet is ideal) to reduce the risk of human and bear (and rodent!) conflicts.
- Do not let garbage and food scraps accumulate in camp. All garbage and food scraps need to be removed from the camp ASAP and before leaving the site.
- Minimize disturbance to land in preparing bedding and campfire sites. Do not clear vegetation, trench, or excavate a flat spot to create bedding sites.
- Do not use nails in trees. Don't construct camp furniture.
- If a campfire is built for warmth in the evening, build either a pit or mound fire. Use dead and down firewood. Use small diameter wood that burns down more cleanly. Don't burn plastics or aluminum - pack it out with the rest of the camp garbage.



### *Dipping and Drafting*

- No cross-dipping between water bodies. All buckets or snorkels should be cleaned, inspected, and dried in the sun if they must be used between lakes. Dipping in small lakes must be pre-approved by the READ or AA.
- When drafting, use already disturbed areas for stream access (road crossings, dispersed campsites) to reduce the need for riparian vegetation clearing.
- Use screens (3/32" inch) for all pumping operations.
- Use containment pads and basins under pumps and fuel cans. Ensure a spill kit is present with every operating pump.

### *Invasive Species*

- The fire is burning within an infestation of common crupina, a WA State Class A Noxious weed. Prevent spread of crupina off site – plan to wash hose and other equipment. Request fire fighters brush boots before boarding boat.
- Inspect slings and remove all plant/soil material prior to use.
- Ensure all camps, staging areas, helispots and cargo areas are free of invasive plants to prevent spread to un-infested areas.

### *Fisheries /Aquatic Recommendations*

- If trees must be felled in riparian areas for suppression or safety reasons, fell them toward streams where possible and minimize bucking where possible.

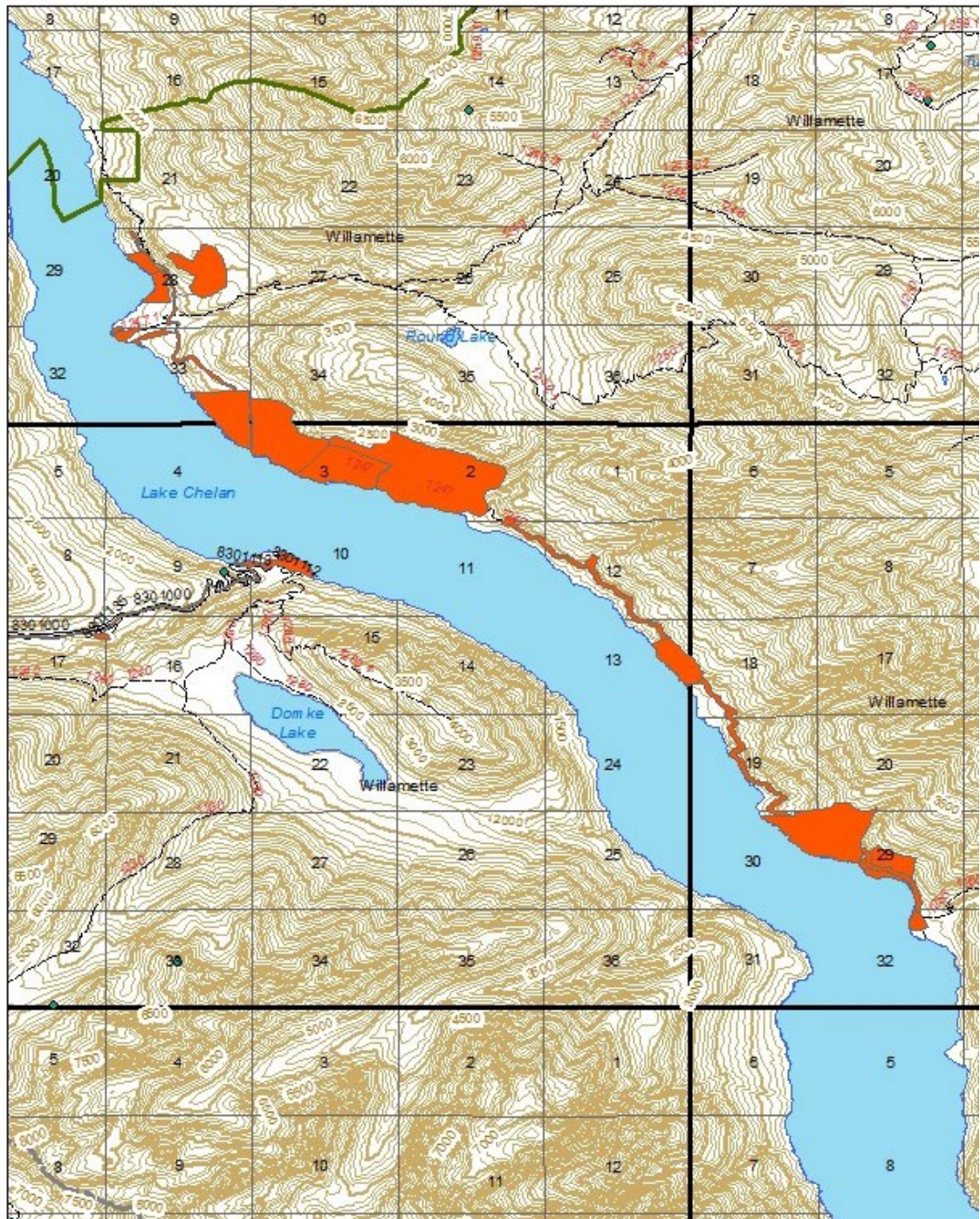
## **Cultural Resources**

- If cultural resources are discovered during suppression activities, leave on site and notify READ.



Crupina Seed





Location of common crupina infestations (north shore of Lake Chelan only). The infestation shown at Lucerne is knapweed.

## LOGISTICS HOURS

**Shower:** 0500 - 1200 & 1400 - 2200

**Supply:** 0600 - 2200

**Ground Support:** 0500 - 2200

**Fuel Tender:** 0700 - 2100

**Kitchen:**

Breakfast: 0530 - 0900

Dinner: 1800 - 2100

## PIONEER CONTACT LIST

**Public Information:** 509-210-2926

**Communications:** 208-891-7870

**Check In/Demob:** 509-661-5372

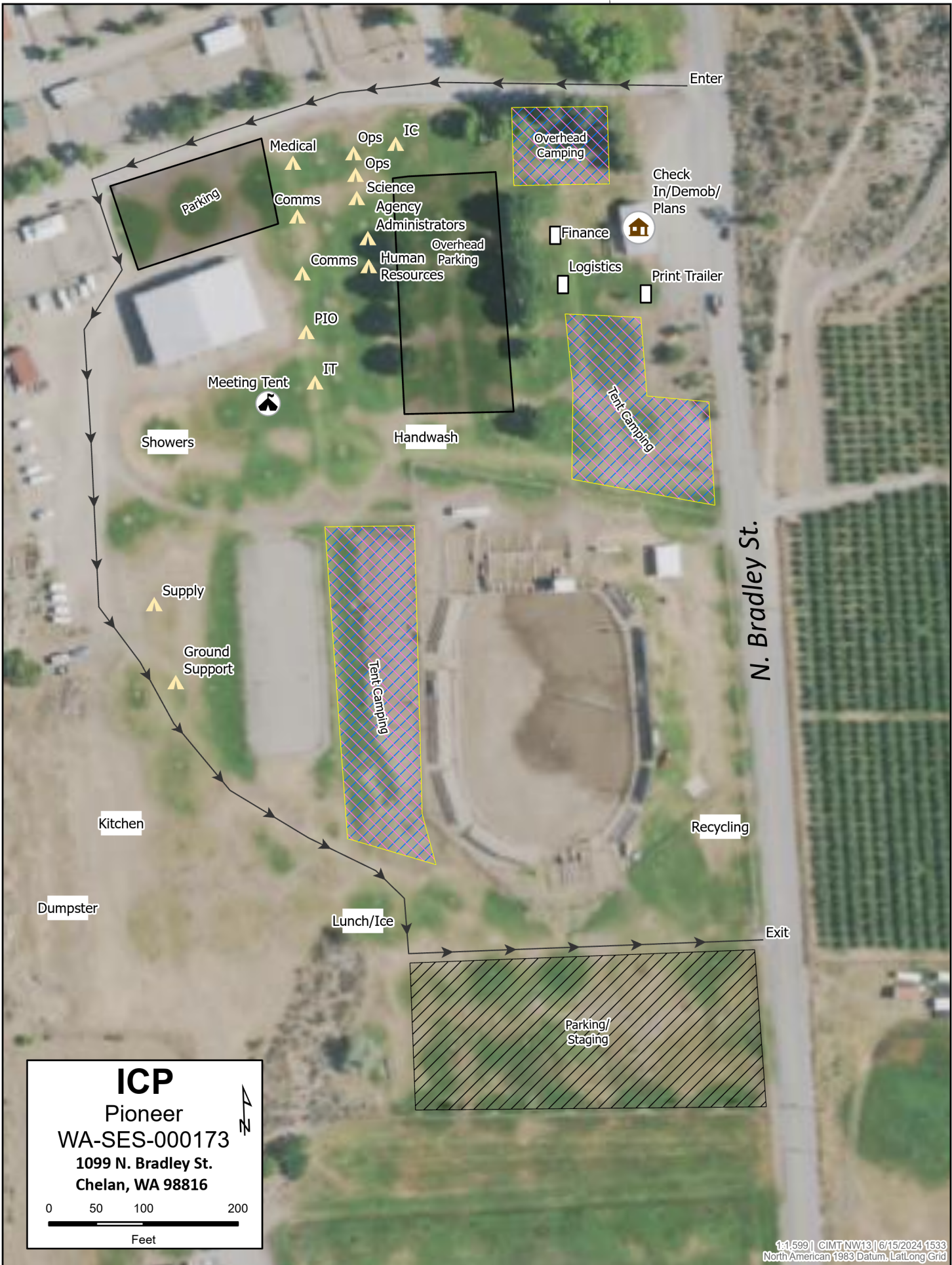
**Medical:** 360-775-5413

**Supply:** 360-827-5382

**Ground Support:** 425-274-6215

**Finance:** Equipment 208-891-6877 & TIME 208-891-8036







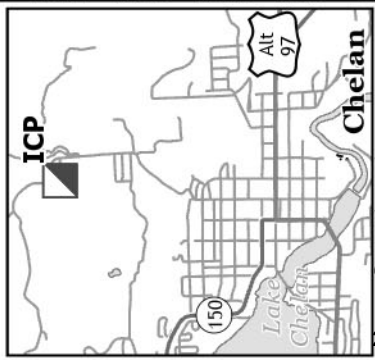


Pioneer

WA-SES-000173  
06/16/2024 16hr

1998 acres on 6/14/2024 @ 0030

ICP: Chelan Rodeo Grounds  
1099 N Bradley St.  
Chelan, WA 98816

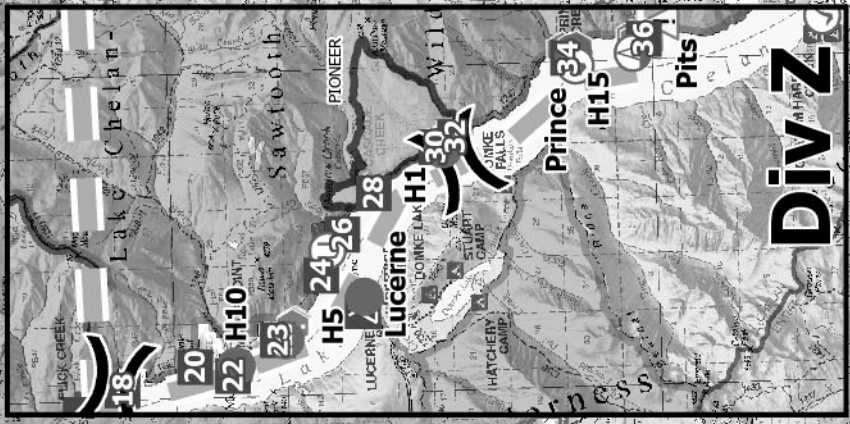
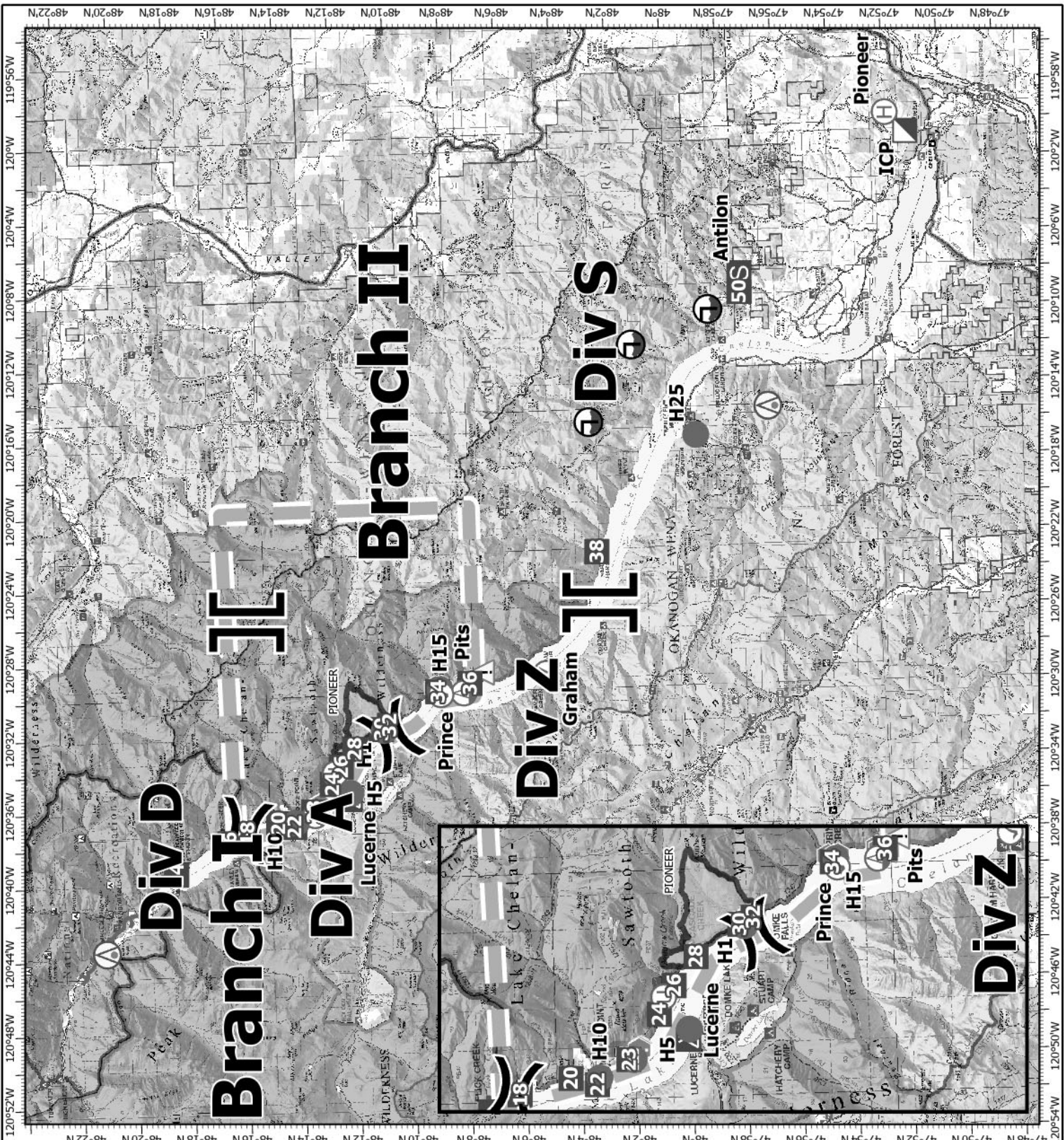


20 Miles

- ⊕ Aerial Hazard
- ⊙ Aviation Check Point
- Helisport
- ⊙ Helibase
- ⊙ Sling Site
- ⊙ Unimproved Landing Area
- X Division Break
- II Branch Break
- ▲ Incident Command Post
- Drop Point
- ⊙ Camp
- ⊙ Staging Area
- ⊙ Value at Risk
- ⊙ Landmark
- ⊙ Hazard
- ⊙ Draft Site
- H— Completed Hand Line
- M— Completed Mixed Construction Line
- Aerial Hazard
- ▒ Temporary Flight Restriction
- ▒ Wildfire Daily Fire Perimeter

0 3.8 7.5 Miles

1:355,106 | CIMT NW113 | 06/15/2024 2157  
Acres from ICP  
North American, 1983 Datum, LatLong Grid





# DIVISION PLANNING WORKSHEET

NEXT OPERATIONAL DATE

DIVISION/GROUP

NAME OF DIVISION/GROUP

ROLL OVER ASSIGNED RESOURCES

EXCESS RESOURCES

CORRECTION TO 204

E or C NUMBER	RESOURCE DESIGNATOR	LEADER	NO. PERSONS	COMMENTS

OPERATIONAL PROJECTION (Task, Purpose, End State) 24 hrs

OPERATIONAL PROJECTION (Task, Purpose, End State) 48 hrs

OPERATIONAL PROJECTION (Task, Purpose, End State) 72 hrs

REQUEST FOR ADDITIONAL RESOURCES

NUMBER	TYPE	RESOURCE KIND	DATE NEEDED

**Critical Needs:** If your resource request is critical, describe the mission and the duration resources are needed.

\* *(Faint, illegible text)*



# MEDICAL PLAN (206 WF)

1. Incident/Project Name				2. Operational Period			
<b>Pioneer Fire</b>				Date/Time: <b>06/16/24 0600-2200</b>			
<b>3. Ambulance Services</b>							
Name	Complete Address	Phone	Advanced Life Support (ALS)				
			Yes	No			
Lake Chelan EMS	Chelan, WA	911	X				
<b>4. Air Ambulance Services</b>							
Name	Phone/Channel	Frequency, Type of Aircraft & Capability					
Life Flight- Brewster	1-800-232-0911 911	VMED 29, Rotor, ALS, 24 hr					
Airlift NW- Wenatchee	1-800-426-2430 911	VMED 29, Rotor, ALS, 24 hr					
Wenatchee Short Haul- Chelan Airport	Command 7,8,9 (Linked)	VMED 29, Rotor, BLS, Daytime, Short haul					
Snohawk 10- Snohomish	1-800-258-5990 911	VMED 29, Rotor, ALS, Daytime, Hoist					
Spokane County Hoist- Spokane	1-509-532-8930 911	VMED 29, Rotor, ALS, 24 hr, Hoist Daytime only					
<b>5. Hospitals</b>							
Name	Degrees Decimal Minutes	Travel Time From Fire		Phone	Helipad		Level of Care
		Air	Boat		Yes	No	
Lake Chelan Health 110 S. Apple Blossom Drive Chelan WA	Lat: 47° 50' 20 N Long: 119° 59' 20 W	30 Min	3 Hr	509-683-2474		X	Level IV Trauma
Central Washington Hospital 1201 S. Miller Wenatchee WA	Lat: 47° 24. 43 N Long: 120° 19. 28 W	1 Hr	4 Hr	509-433-3115	X		Level II Trauma
Harborview Medical Center 325 9 <sup>th</sup> Ave Seattle WA	Lat: 47° 36. 24 N Long: 122° 19. 45 W	1.5 Hr	6 Hr	206-744-4025	X		Level I Trauma Burn Center
<b>ICP</b>	<b>EMS Responders &amp; Capability:</b>		<b>James Brown MEDL/Paramedic</b> 360-775-5413				
	Equipment Available on Scene:		ALS Kit, AED, O2, OTC meds				
	Medical Emergency Channel:		Command 7,8,9 (Linked)				
	ETA for Ambulance to Scene:						
	Air:		NA				
	Ground:		15 Min				
	Approved Heli-Spot:		NA				
	Lat:		NA				
Long:		NA					
<b>BRANCH I</b>	<b>EMS Responders &amp; Capability:</b>		<b>REMS 1 Caitlin Lucia +3 (H-1)</b> 443-699-2512 <b>MEDIC 4 Nathan Etherington (H-1)</b> 360-969-1251 <b>MEDIC 1 Remington Becker (DP-36)</b> 360-903-8612 <b>MEDIC 3 Adam Lathrop (Moore Point)</b> 425-531-0469				
	Equipment Available on Scene:		ALS Kit, Cardiac Monitor/Defib, O2, Rescue gear				
	Medical Emergency Channel:		Command 7,8,9 (Linked)				
	ETA for Ambulance to Scene:						
	Air:		2 hr				
	Water/Ground:		3 hr				
	Approved Heli-Spot:						
	H-1 48° 10.813 N 120° 31.9242 W		<b>LUCERNE 48° 12.1624 N 120° 35.4476 W</b>				
<b>BRANCH II</b>	<b>EMS Responders &amp; Capability:</b>		<b>MEDIC 2 Joel Bower (Snow Park)</b> 360-461-7390				
	Equipment Available on Scene:		ALS Kit, Defib, O2				
	Medical Emergency Channel:		Command 7,8,9 (Linked)				
	ETA for Ambulance to Scene:						
	Air:		2 hr				
	Ground:		3 hr				
	Approved Heli-Spot:						
	Lat:						
Long:							
<b>Prepared By (Medical Unit Leader)</b>		<b>Date</b>	<b>Reviewed By (Safety Officer)</b>			<b>Date</b>	
James Brown MEDL		06/15/24	Ray Hershey SOF2			06/15/24	
Signature: <i>James Brown</i>			Signature: <i>Ray Hershey</i>				

# MEDICAL PLAN (ICS 206 WF)

Controlled Unclassified Information//Basic

## Medical Incident Report

**FOR A NON-EMERGENCY INCIDENT, WORK THROUGH CHAIN OF COMMAND TO REPORT AND TRANSPORT INJURED PERSONNEL AS NECESSARY.**

**FOR A MEDICAL EMERGENCY: IDENTIFY ON-SCENE INCIDENT COMMANDER BY NAME AND POSITION AND ANNOUNCE "MEDICAL EMERGENCY" TO INITIATE RESPONSE FROM IMT COMMUNICATIONS/DISPATCH.**

**Use the following items to communicate situation to communications/dispatch.**

**1. CONTACT COMMUNICATIONS / DISPATCH** (Verify correct frequency prior to starting report)

*Ex: "Communications, Div. Alpha. Stand-by for Emergency Traffic."*

**2. INCIDENT STATUS:** Provide incident summary (including number of patients) and command structure.

*Ex: "Communications, I have a Red priority patient, unconscious, struck by a falling tree. Requesting air ambulance to Forest Road 1 at (Lat./Long.) This will be the Trout Meadow Medical, IC is TFLD Jones. EMT Smith is providing medical care."*

Severity of Emergency / Transport Priority	<input type="checkbox"/> <b>RED / PRIORITY 1 Life or limb threatening injury or illness. Evacuation need is IMMEDIATE</b> <i>Ex: Unconscious, difficulty breathing, bleeding severely, 2° – 3° burns more than 4 palm sizes, heat stroke, disoriented.</i> <input type="checkbox"/> <b>YELLOW / PRIORITY 2 Serious Injury or illness. Evacuation may be DELAYED if necessary.</b> <i>Ex: Significant trauma, unable to walk, 2° – 3° burns not more than 1-3 palm sizes.</i> <input type="checkbox"/> <b>GREEN / PRIORITY 3 Minor Injury or illness. Non-Emergency transport</b> <i>Ex: Sprains, strains, minor heat-related illness.</i>	
Nature of Injury or Illness & Mechanism of Injury		<i>Brief Summary of Injury or Illness (Ex: Unconscious, Struck by Falling Tree)</i>
Evacuation Request		<i>Air Ambulance / Short Haul/Hoist Ground Ambulance / Other</i>
Patient Location		<i>Descriptive Location &amp; Lat. / Long. (WGS84)</i>
Incident Name		<i>Geographic Name + Medical (Ex: Trout Meadow Medical)</i>
On-Scene Incident Commander		<i>Name of on-scene IC of Incident within an Incident (Ex: TFLD Jones)</i>
Patient Care		<i>Name of Care Provider (Ex: EMT Smith)</i>

**3. INITIAL PATIENT ASSESSMENT:** Complete this section for each patient as applicable (start with the most severe patient)

Patient Assessment: See IRPG PAGE 106

Treatment:

**4. EVACUATION PLAN:**

Evacuation Location (if different): (Descriptive Location (drop point, intersection, etc.) or Lat. / Long.) Patient's ETA to Evacuation Location:

Helispot / Extraction Site Size and Hazards:

**5. ADDITIONAL RESOURCES / EQUIPMENT NEEDS:**

*Example: Paramedic/EMT, crews, immobilization devices, AED, oxygen, trauma bag, IV/fluid(s), splints, rope rescue, wheeled litter, HAZMAT, extrication*

**6. COMMUNICATIONS: Identify State Air/Ground EMS Frequencies and Hospital Contacts as applicable**

Function	Channel Name/Number	Receive (RX)	Tone/NAC *	Transmit (TX)	Tone/NAC *
COMMAND					
AIR-TO-GRND					
TACTICAL					

**7. CONTINGENCY: Considerations:** If primary options fail, what actions can be implemented in conjunction with primary evacuation method? Be thinking ahead..

**8. ADDITIONAL INFORMATION:** Updates/Changes, etc.

**REMEMBER:** Confirm ETAs of resources ordered. Act according to your level of training. Be Alert. Keep Calm. Think Clearly. Act Decisively.