

WEDNESDAY



JUNE 26, 2024

OPERATION PERIOD

Day: 0700 - 2100

COMMUNICATIONS 24-HOUR
EMERGENCY NUMBER

(208) 891-7948

PIONEER CHARGE CODES

USFS: PN RZ79 (1522)

DOI: RZ79

WA DNR: 221-LDW



Maps, IAP,
Finance / Eval.



PIONEER INCIDENT ACTION PLAN

Pioneer

WA-SES-000173



Notes

	Ground	Air
FS:		
DNR:		
OSC:		
FSAA:		
DNR AA:		

INCIDENT OBJECTIVES	1. Incident Name	2. Date Prepared	3. Time
	PIONEER	06/25/2024	1900

4. Operational Period
Day Operations: 0700-2100

Strategic Framework:

The Pioneer Fire is a full suppression fire utilizing strategies and tactics that provide the highest likelihood of success while mitigating risks to the responders and public. Extreme terrain prevents direct attack. Indirect lines are being identified and established that reduces risk to responders while protecting identified values including private and federal infrastructure and recreational values.

Management Objectives:

- Ensure the safety and well being of responders and the public by making timely risk-informed decisions that align with values at risk.
- Protect private and federal infrastructure and recreational values.
- Foster relationships with local cooperators and the public by providing coordinated, accurate and timely information.
- Coordinate suppression activities with READ's to identify and mitigate current and future impacts to the landscape and resources.
- Treat each other with dignity and respect and act in a professional manner on the fire and in the communities.
- Manage cost commensurate with values at risk by coordinating with the Agency Administrators and Incident Business Advisors.

Operational Objectives:

- Implement an effective suppression strategy utilizing direct attack where and when appropriate to protect values at risk. When fire behavior, terrain, or safety concerns prohibit direct attack, utilize other suppression tactics such as indirect and point protection as appropriate to reduce risk to responders. Take advantage of natural features such as breaks in fuels, topographic features, or changes in weather.
- Establish indirect control lines with the highest probability of success which prevent fire spread into populated areas.
- Communicate with local law enforcement officials to ensure current and potential evacuations are coordinated.


6. Weather Forecast for Period

7. General Safety Message

8. Attachments (mark if attached)

X	Organization List - ICS 203	X	Medical 206WF - 8 Line	X	Finance Message
X	Div. Assignment Lists - ICS 204	X	Safety Message	X	Dutch Creek Protocol
X	Communications Plan - ICS 205		LCES - ICS 215A	X	Phone List
X	Medical Plan - ICS 206	X	Weather Forecast	X	Incident Map(s)
X	Air Operation Summary - ICS 220	X	Fire Behavior	X	Unit Log

Prepared by Planning Section Chief


Approved by Incident Commander


ORGANIZATION ASSIGNMENT LIST	
1. Incident Name PIONEER	
2. Date Prepared JUNE 25, 2024	3. Time Prepared 1800
4. Operational Period JUNE 26, 2024 0700 – 2100	
5. Incident Commander and Staff	
Position	Name
Incident Commander	Nate Lefevre
Deputy	Chris Orr
Safety Officer	Matt Broyles / Jeremiah Maghan (T)
Information Officer	Liv Stecker
Liaison	Shawn Christianson / Greg Brody (Stehekin) / Mark Suba / Rhonda Marchand (T)
Human Resources	Margaret Dietrich
6. Agency Representatives	
Agency	Name
USFS Oka/Wen Agency Admin	Kari Grover-Wier
USFS Oka/Wen Agency Admin (T)	Paul Willard
DNR Agency Administrator	Larry Leach
DNR Deputy Agency Administrator	Wyatt Leighton
NPS Agency Administrator	Don Striker
NPS Agency Representative	Ash Rawhouser
NPS FMO	Matt Ellis
USFS Lead READ	Brigitte Ranne
NPS Lead READ	Cedar Drake
REAF	Hector Rodriguez
REAF	Eireann Pederson
REAF	Carissa Camenson
7. Planning Section	
Plans Section Chief	Mike Crawford
Deputy	Debbie Plummer (T)
Resource Unit	Gary Duranceau/ Cari Richardson
Status Check-in	Katelyn Roeder / Charlie Hardy
Situation Unit	Shannon Theall / Ray Moeckel (T)
Demob Unit	Jay Lord
Documentation Unit	Chris Oelschlager
Incident Meteorologist	Trent Smith
Fire Behavior Analyst	Steve Ziel
Long Term Fire Analyst	Brett Smith (Virtual)
8. Logistics Section	
Logistics Section Chief	Franklin Vaughan
Deputy	Max Yager (Stehekin) / Cindy Wedekind (Lucerne)

Facilities	Jan Robbins / Kelsy Lipp / Peter Drott (T) / Mike Prevost (T) / Randy Rector (T)
Base Camp Manager	Dave Lefevre/Mac McEntyre (T)
Supply Unit	Vicki Cunningham
IT Specialist	Mike Gascon / Chad Funnemark / Ben Smith (T)
Receiving Distribution	Michael Hanson / Karl Peterson (T)
Ordering Manager	Noe Reyes
Ground Support Unit	Casey Glade / Joe Keady
Communication Unit	Seth Baumgartner / Michael Merrick (T)
Communication Tech.	Keith Schaff / Kevin Judd
Food Unit	Larry Falcon/John Cody/Phil Moller/Shawna Monroe (T)
Security Manager	Michael Fakier
Medical Unit	Mariann Turley / James Brown / Kevin Smith (T) / Ben Meacham
9. Operations Section	
OPS Section Chief - Lead	Jon Larson / Jesse Kiene (T)
OPS Section Chief - Planning	Rob Poyner (T)
OPS Section Chief – Field	Seth Merritt
a. Branch I	
Branch Director	Thom Taylor
Division A	Seth Missal / James Fields (T)
Division Z	Travis Baker/Frank Heilman (T)
b. Branch II	
Branch Director	Thom Taylor
Division D	Ben Lippert / Silas Baffa (T)
c. Branch V	
Branch Director	Alfred Wiehl / Roger Goldman
Division S	Linda Gibson / Holt Jaeger (T)
Division H	
Division Contingency / Roads	Jennifer Harris/Eric Metzger (T)
Division Boat	Nate Crawford
Division Staging	Jon Merager
d. Air Operations Branch	
AOB Director – Planning	Mark Hocken
AOB Director – Field	Ted Hass
10. Finance Section	
Finance Section Chief	Patty Westgate / Lori Bailey (T)
Time Unit	Beverly Hollars / Heather Wall
Procurement	Audrey Mainwaring
Comp/Claims	Kelly Lorenz (Virtual)
Cost Unit	Mike Lysne (Virtual)
Prepared by Cari Richardson, RESL	



Fire Weather Forecast



FORECAST NO: 14

INCIDENT: Pioneer Fire

PREDICTION FOR: 24 Hr Shift

SHIFT DATE: Wednesday 6/26/2024

SIGNED: Trent Smith *Trent A. Smith*
Incident Meteorologist (IMET)

TIME AND DATE ISSUED: 6/25/2024 1800 hrs

...STRONG COLD FRONT THIS AFTERNOON...

Discussion: A few showers are expected this morning, then a cold front will cause strong showers and thunderstorms to impact the region between 1300 to 1800. The winds turn northwesterly behind the front by mid afternoon with the strongest winds between 1500 to 1900. Cool and showery conditions will persist into Thursday.

WEATHER FORECAST FOR TODAY:

SKY/WEATHER: Mostly cloudy becoming partly cloudy in the afternoon. 20% chance of showers in the morning then 60% chance of showers and thunderstorms mainly in the afternoon

MAX TEMPERATURE: 77 to 82.

MIN RH: 32 to 37 percent.

20 FT WINDS:

Lower Valleys: Terrain driven 2 to 6 mph becoming northwest 10 to 15 mph gusts to 25 mph mid afternoon.

Mid-slopes and Ridges: Terrain driven 3 to 8 mph becoming northwest 10 to 15 mph gusts to 35 mph by mid afternoon.

HAINES INDEX: 3 Very Low: Stability-2 & Moisture-1

TRANSPORT WINDS: W 15 mph.

INVERSION: 500 ft inversion starting to lift at 0800 with a max of 6000 ft by 1600.

TONIGHT:

SKY/WEATHER: Partly cloudy becoming mostly cloudy after midnight. 25% chance of showers and thunderstorms in the evening.

MIN TEMPERATURE: 53 to 58.

MAX RH: Valley: 63 to 68 percent; Midslope: 54 to 59 percent.

20 FT Wind

Valleys/Lower Slopes: Northwest 10 to 15 mph gusts to 25 decreasing to 5 to 10 mph gusts to 15 mph after midnight.

Mid-Slopes and Ridges: Northwest 10 to 15 mph gusts to 35 mph decreasing 5 to 10 mph gusts to 20 mph after midnight.

INVERSION: Developing after 2100 hrs near 1000 ft.

THURSDAY:

SKY/WEATHER: Mostly cloudy. 30% chance of showers.

MAX TEMPERATURE: High 64 to 69.

MIN RH: 39 to 44 percent.

20 FT WINDS:

Lower Valleys: Northwest 5 to 10 mph gusts to 15 mph increasing to 10 to 15 with gusts to 25 mph in the afternoon.

Mid-slopes and Ridges: Northwest 5 to 10 mph gusts to 20 mph increasing to 10 to 15 mph gusts to 35 mph in the afternoon.

HAINES INDEX: 2 Very Low.

TRANSPORT WINDS: NW 17 mph.

Weather observations can be texted to 406-360-6330 or emailed to trent.smith@noaa.gov

Fire Behavior Forecast # 15

Name of Incident: Pioneer	Administrative Unit: SE Region DNR / Okanogan-Wenatchee NF
Date & Time Issued: June 25, 2024 @ 2000	Operational Period: <u>DAY</u> 06/26/2024
FBAN: Steve Ziel	Signed: /z/

Assumptions: *Potential for dynamic fire behavior today due to strong Cold Front and thunderstorms. Current fuel conditions will support active fire spread with winds/slope alignment. Potential fire behavior is being inhibited by fuel condition and discontinuity. Expect favorable burning conditions between 1300-1700. Persistent burning conditions and retention of heat in heavy fuels may be expected. Live fuels are not contributing to fire spread (yet). Lake effect winds (up or downlake) dominate lower and mid slopes; the fire areas is on a SW aspect with steep side drainages that provide upslope winds. Wind/slope alignment and/or lake wind will influence fire spread.*

Weather Summary

*See attached Fire Weather Forecast

Fire Behavior Summary

Fuels in the fire area are composed of a mosaic of *Timber Litter, Grass, Timber with Understory, and Grass/Shrub* models. The fire is burning in the Rex Creek (2001) fire footprint. Primary tree species include mixed sizes and densities of Douglas Fir and Ponderosa Pine. Local timber litter is compact to fluffy. Brush and understory species include ceanothus, hardwoods, and dog-hair conifer reproduction. Large snags and heavy downed fuel loadings are common throughout all areas. Live woody and herbaceous fuels are seasonally moist, and not contributing to rates of spread; grasses are partially to fully cured. Fuel conditions change by aspect, previous fire history, and soil moisture. Low crown base height (ladder fuels) is present in most of the timbered areas.

Today's potential fire behavior (assumed DRY) may include pockets/areas of active surface fire spread with wind/slope alignment. Primary spread mechanism has been backing with rollout, active flanking on slopes, and limited head fire spread. Rapid spread may occur with slope reversals and continuous fuels. Heavy fuels are retaining heat and contributing to surface spread with wind and low RH during the burn period. Early season fuel condition is inhibiting full fire behavior potential – live fuels are moist, some grasses are still curing. *Short duration high intensity T-storm winds may result in high intensity “multi-directional” fire spread.

* FFM= 5%-7%, 1000hr. moisture=12%, Woody fuels 170%, Probability of Ignition-60-80%, Max Spotting < 0.5

Fuel Type	Rate of Spread	Flame Length	Backing ROS	35 MPH Gust – RT or T-storm
...If your work area includes -	(CH/HR = FPM)	Feet	FPM	FPM
GR2 - Moderate load grass/shrub	2-4	<2	<2	15+
SH2 – Moderate load shrub	3-5	2	2	5-7
TU5 - High load Timber w/ Understory	10-15	6-8	5	20-25
TL8 – Long needle timber litter	10-15	2-4	3	25-30

Specific Assignments:

Div. A – Expect continued spread in headwaters of Meadow Cr with flanking, backing and short head fire runs. Flare-ups likely.

Div. Z –Ragged edge fire edge on north side of Prince Cr will continue to back, flank, rollout. Possible short head fire runs with wind.

Other Divisions – Should not be affected by fire activity during the burn period. Monitor smoke direction and amount. IA potential.

*IA – Ensure good size-up before engaging. Assess fire spread potential based on fuel, weather, topography and values at risk.

Air Operations: NW ridgetop wind gusts to 35 mph by afternoon. Monitor ridge top wind transitions, and lake winds to 25 mph.

Safety

At all times.....**Keep informed on fire weather conditions and forecasts** (read the Fire and Weather forecasts, observe weather changes throughout the day, listen to radio). **Know what your fire is doing at all times** (observe smoke, flames, direction, note changing conditions). **Base all actions on current and expected behavior of the fire** (evaluate your situation and the fire activity – anticipate rate of change, consider “what-if’s”, establish trigger points).

****Potential for T-storms today.**

*Today's Fire Behavior Forecast contains 633(+ 35 from previous) words written for your situational awareness.

DIVISION ASSIGNMENT LIST		1. Branch I	2. Division / Group A				
3. Incident Name Pioneer		4. Operational Period Date: 06/26/2024 Time: 0700-2100					
5. Operations Personnel							
Operations Chief	Jon Larson / Jesse Kiene (T)		Division / Group Supervisor	Seth Missal / James Fields (T)			
Operations Chief (Plans)	Rob Poyner (T)		Branch Director	Thom Taylor			
Safety Officer	Matt Broyles / Jeremiah Maghan (T)		Air Attack Supervisor	Chad Bergren			
6. Resources Assigned this Period							
	Strike Team / Task Force / Resource Designator	Leader	Number Persons	Tentative Last Work Day	Drop Off Pt / Time	Pick Up Pt / Time	
1.	O-49 TFLD	Jeremy Zemke	1	6/26			
2.	O-179 TFLD	Charlie Humbert	1	7/9			
3.	O-52 TFLD (T)	Dante Ybarra	1	6/26			
4.							
5.	C-8 CRW1 Union IHC	Eric Jorgenson	25	6/27			
6.	C-9 CRW1 Zigzag IHC	Sandra Sperry	25	6/28			
7.	C-13 CRW1 Vale IHC	Glen Heitz	20	7/4			
8.	O-187 WFM1 Grass Lake	William Johnson	9	7/7			
9.							
10.	O-67 MEDIC 3	Adam Lathrop	1	7/4			
11.	O-137 EMT 3	James Franklin	1	7/1			
12.	O-153 EMT 2	Aiden Noel	1	7/1			
13.							
14.	O-175 SOFR	Melissa Moore	1	7/4			
15.	O-174.52 SOFR	George Libercajt	1	7/7			
16.							
17.							
18.							
19.							
20.							
7. Control Operations							
Task: Contain fire spread to the northwest where terrain and fuels allow for highest probability of success. Assess fire perimeter progression to the north and west at higher elevations. Implement point protection efforts on federal & private infrastructure.							
Purpose: To slow fire progression, provide time for suppression tactics, and continue to prep around critical values.							
End state: Minimize fire impacts to critical values including private inholdings and Forest Service infrastructure.							
8. Special Instructions							
<ul style="list-style-type: none"> In large or long term spike camps use helicopters, boats, or pack stock to deliver portable backcountry latrines and remove human waste if necessary. If camp does not have adequate pack, boat, or air support for human waste management, establish community latrines well away from water sources and common areas. Use human waste bags, if necessary. Minimize ground disturbance on the Moore Point and Meadow Creek alluvial fans in order to protect sensitive resources. Ensure hazard mitigations and IWI protocols are in place before taking action. 							
9. Division / Group Communication Summary							
Function	Frequency	System	Channel	Function	Frequency	System	Channel
Command Repeater	See Comm Plan			Command	See Comm. Plan		
TAC				Air To Ground	See Comm. Plan		
Prepared by (Resource Unit Leader): Name: Gary Duranceau			Approved by (Planning Section Chief) Name: Mike Crawford		Date 6/25/24	Time 1900	

DIVISION ASSIGNMENT LIST		1. Branch I	2. Division / Group Z				
3. Incident Name Pioneer		4. Operational Period Date: 06/26/2024 Time: 0700-2100					
5. Operations Personnel							
Operations Chief	Jon Larson / Jesse Kiene (T)		Division / Group Supervisor	Travis Baker / Frank Heilman (T)			
Operations Chief (Plans)	Rob Poyner (T)		Branch Director	Thom Taylor			
Safety Officer	Matt Broyles / Jeremiah Maghan (T)		Air Attack Supervisor	Chad Bergren			
6. Resources Assigned this Period							
	Strike Team / Task Force / Resource Designator	Leader	Number Persons	Tentative Last Work Day	Drop Off Pt / Time	Pick Up Pt / Time	
1.	O-48 TFLD	Jeff Coburn	1	6/26			
2.							
3.	O-182 WFM1 Selway	JT Sohr	14	7/8			
4.							
5.	A-23 Boise Helitack	Jean Luke Ankney	3	7/6			
6.							
7.	A-27 UR-31	Ryan Gregg	4	6/26	Half Shift		
8.	A-78 UR-31	Marshal Wallace	2	7/9			
9.							
10.	O-51 MEDIC 1	Remington Becker	1	7/3			
11.							
12.	O-174.52 SOFR	George Libercajt	1	7/7			
13.	O-189 SOF2	John Nickey	1	7/1			
14.							
15.							
16.							
17.							
18.							
7. Control Operations							
Task: Contain fire spread to the southwest southeast where terrain and fuels allow for high probability of success. Assess fire perimeter progression to the east/southeast at higher elevations.							
Purpose: To slow fire progression, provide time for suppression tactics, and continue to prep around critical values.							
End state: Minimize fire impacts to critical values including private inholdings and Forest Service infrastructure							
<ul style="list-style-type: none"> In large or long term spike camps use helicopters, boats, or pack stock to deliver portable backcountry latrines and remove human waste if necessary. If camp does not have adequate pack, boat, or air support for human waste management, establish community latrines well away from water sources and common areas. Use human waste bags, if necessary. Ensure hazard mitigations and IWI protocols are in place before taking action. 							
8. Division / Group Communication Summary							
Function	Frequency	System	Channel	Function	Frequency	System	Channel
Command Repeater	See Comm Plan			Command	See Comm. Plan		
TAC				Air To Ground	See Comm. Plan		
Prepared by (Resource Unit Leader): Name: Gary Duranceau			Approved by (Planning Section Chief): Name: Mike Crawford		Date: 6/25/24	Time: 1900	

DIVISION ASSIGNMENT LIST		1. Branch II	2. Division / Group D		Page 1 of 2		
3. Incident Name Pioneer		4. Operational Period Date: 06/26/2024				Time: 0700-2100	
5. Operations Personnel							
Operations Chief	Jon Larson / Jesse Kiene (T)		Division / Group Supervisor	Ben Lippert / Silas Baffa (T)			
Operations Chief (Plans)	Rob Poyner (T)		Branch Director	Thom Taylor			
Safety Officer	Matt Broyles / Jeremiah Maghan (T)		Air Attack Supervisor	Chad Bergren			
6. Resources Assigned this Period							
Strike Team / Task Force / Resource Designator	Leader	Number Persons	Tentative Last Work Day	Drop Off Pt / Time	Pick Up Pt / Time		
1. O-183 TFLD	Harley Hamman	1	7/6	Stehekin	Stehekin		
2.							
3. O-122 HECM	Nick DePanlo	4	7/1	Stehekin	Stehekin		
4.							
5. O-147 SMOD LNP CREW 76	Sara Martinez	7	7/3	Stehekin	Stehekin		
6. O-148 SMOD HVP CREW 1	Brent Webb	10	7/3	Stehekin	Stehekin		
7. O-218 WFM2 Olympic	Jonah Gray	10	7/6	Stehekin	Stehekin		
8.							
9. O-184 FELB	Marty Cozart	1	7/6	Stehekin	Stehekin		
10. O-186 FMOD Kintner Timber	Cory Kintner	2	7/6	Stehekin	Stehekin		
11. O-185 FMOD Brothers Fire	Levi Merritt	2	7/6	Stehekin	Stehekin		
12.							
13. O-125 READ	Cedar Drake	1	7/6	Stehekin	Stehekin		
14. O-166 REAF	Jordan Spaak	1	7/4	Stehekin	Stehekin		
15. O-235 REAF	Cade Simpson	1	7/7	Stehekin	Stehekin		
16. O-168 ARCH	Ernest Wingate	1	7/7	Stehekin	Stehekin		
17. O-167 ARCH	Jason Wright	1	7/5	Stehekin	Stehekin		
18.							
19. O-165 REMS 2	Brayden Kirk	4	7/10	Stehekin	Stehekin		
20. O-174.79 MEDL (T)	Kevin Smith	1	7/7	Stehekin	Stehekin		
7. Control Operations							
Task: Continue construction of contingency lines around the community of Stehekin. Look for opportunities to contain fire spread in and around Flick Creek area where terrain and fuels allow for highest probability of success.							
Purpose: Minimize fire impacts to critical values including private inholdings, the community of Stehekin, and Forest Service infrastructure.							
End state: Critical values including private inholdings, the community of Stehekin, and Forest Service infrastructure are not impacted by the Pioneer fire, while minimizing fire impacts and acres burned utilizing historic wildfire control features and natural barriers.							
8. Special Instructions							
<ul style="list-style-type: none"> In large or long term spike camps use helicopters, boats, or pack stock to deliver portable backcountry latrines and remove human waste if necessary. If camp does not have adequate pack, boat, or air support for human waste management, establish community latrines well away from water sources and common areas. Use human waste bags, if necessary. All operational personnel working on USFS lands will need to conduct a thorough inspection for invasive species seeds on boots including laces, clothing, and gear prior to entering NPS lands. Only fresh (direct from the cache) hose should be utilized on NPS lands to prevent the transport of invasive species seeds. Hose used on USFS lands should not be used on NPS lands and hose used on NPS lands should not be used on USFS lands to prevent the spread of invasives species seeds. Cargo loads being transported onto NPS lands should be inspected for invasive weed seed prior to flight. Ensure hazard mitigations and IWI protocols are in place before taking action. <p>NPS Resource Avoidance Area Flagging is yellow with red polka dots. Contact NPS READs before working in areas where this flagging is present.</p>							
9. Division / Group Communication Summary							
Function	Frequency	System	Channel	Function	Frequency	System	
Command Repeater	See Comm Plan			Command	See Comm. Plan		
TAC				Air To Ground	See Comm. Plan		
Prepared by (Resource Unit Leader): Name: Gary Duranceau			Approved by (Planning Section Chief): Name: Mike Crawford		Date: 6/25/24	Time: 1900	

DIVISION ASSIGNMENT LIST		1. Branch II	2. Division / Group D	Page 2 of 2			
3. Incident Name Pioneer		4. Operational Period Date: 06/26/2024 Time: 0700-2100					
5. Operations Personnel							
Operations Chief	Jon Larson / Jesse Kiene (T)		Division / Group Supervisor	Ben Lippert / Silas Baffa (T)			
Operations Chief (Plans)	Rob Poyner (T)		Branch Director	Thom Taylor			
Safety Officer	Matt Broyles / Jeremiah Maghan (T)		Air Attack Supervisor	Chad Bergren			
6. Resources Assigned this Period							
	Strike Team / Task Force / Resource Designator	Leader	Number Persons	Tentative Last Work Day	Drop Off Pt / Time	Pick Up Pt / Time	
21.	C-11 CRW1 Redmond IHC	Dave Varon	20	6/28			
22.							
23.	O-129 FELB	Mel Tenneson	1	7/1			
24.	O-127 FMOD Rainstorm	Kendall Cain	2	7/1			
25.	O-128 FMOD Rainstorm	Mike Lind	2	7/1			
26.							
27.	O-170 THSP	Tanya Neider	1	7/3			
28.							
29.	O-142 SOF2	Kelly Jensen	1	7/1			
30.	O-174.88 SOFR	Leo Engleson	1	7/7			
31.							
32.	E-119 Driver	Stephen Bouche	1	7/2			
33.							
34.							
35.							
36.							
7. Control Operations Task: Continue construction of contingency lines around the community of Stehekin. Look for opportunities to contain fire spread in and around Flick Creek area where terrain and fuels allow for highest probability of success. Purpose: Minimize fire impacts to critical values including private inholdings, the community of Stehekin, and Forest Service infrastructure. End state: Critical values including private inholdings, the community of Stehekin, and Forest Service infrastructure are not impacted by the Pioneer fire, while minimizing fire impacts and acres burned utilizing historic wildfire control features and natural barriers.							
8. Special Instructions							
<ul style="list-style-type: none"> In large or long term spike camps use helicopters, boats, or pack stock to deliver portable backcountry latrines and remove human waste if necessary. If camp does not have adequate pack, boat, or air support for human waste management, establish community latrines well away from water sources and common areas. Use human waste bags, if necessary. All operational personnel working on USFS lands will need to conduct a thorough inspection for invasive species seeds on boots including laces, clothing, and gear prior to entering NPS lands. Only fresh (direct from the cache) hose should be utilized on NPS lands to prevent the transport of invasive species seeds. Hose used on USFS lands should not be used on NPS lands and hose used on NPS lands should not be used on USFS lands to prevent the spread of invasive species seeds. Cargo loads being transported onto NPS lands should be inspected for invasive weed seed prior to flight. Ensure hazard mitigations and IWI protocols are in place before taking action. NPS Resource Avoidance Area Flagging is yellow with red polka dots. Contact NPS READS before working in areas where this flagging is present. 							
9. Division / Group Communication Summary							
Function	Frequency	System	Channel	Function	Frequency	System	Channel
Command Repeater	See Comm Plan			Command	See Comm. Plan		
TAC				Air To Ground	See Comm. Plan		
Prepared by (Resource Unit Leader): Name: Gary Duranceau			Approved by (Planning Section Chief) Name: Mike Crawford		Date 6/25/24	Time 1900	

DIVISION ASSIGNMENT LIST		1. Branch V	2. Division / Group S		Page 1 of 2		
3. Incident Name Pioneer		4. Operational Period Date: 06/26/2024 Time: 0700-2100					
5. Operations Personnel							
Operations Chief	Jon Larson / Jesse Kiene (T)		Division / Group Supervisor		Linda Gibson / Holt Jaeger (T)		
Operations Chief (Plans)	Rob Poyner (T)		Branch Director		Alfred Wiehl / Roger Goldman		
Safety Officer	Matt Broyles / Jeremiah Maghan (T)		Air Attack Supervisor		Chad Bergren		
6. Resources Assigned this Period							
	Strike Team / Task Force / Resource Designator	Leader	Number Persons	Tentative Last Work Day	Drop Off Pt / Time	Pick Up Pt / Time	
1.	O-112 TFLD	David Ortlund	1	7/1	Camp 4 Spike	Camp 4 Spike	
2.	O-113 TFLD (T)	Gavin Young	1	7/1	Camp 4 Spike	Camp 4 Spike	
3.	O-110 TFLD	Shane Clifton	1	6/30	Camp 4 Spike	Camp 4 Spike	
4.	O-111 TFLD (T)	Lars Olson	1	6/30	Camp 4 Spike	Camp 4 Spike	
5.	O-115 HEQB	Garrett Hansen	1	6/30	Camp 4 Spike	Camp 4 Spike	
6.	O-117 HEQB (T)	Ian Fox	1	6/30	Camp 4 Spike	Camp 4 Spike	
7.	O-130 FELB	Rob Winkler	1	7/2	Camp 4 Spike	Camp 4 Spike	
8.	O-126 FMOD Fire Contracting Serv.	Ethan Wilson	2	7/1	Camp 4 Spike	Camp 4 Spike	
9.							
10.	**C-10 CR2I Methow Valley IA	Benjamin Boucher	23	6/29	Safe Harbor	Safe Harbor	
11.	**C-18 CR2I Colville	Jacob Morse	21	7/6	Camp 4 Spike	Camp 4 Spike	
12.							
13.	E-73 WTS1 Strand Tenders	Garret Strand	1	6/27	ICP	ICP	
14.	E-78 WTS2 King Hydroseeding	Bill Black	1	7/10	ICP	ICP	
15.							
16.	E-92 DZR3 Batchelor Excavation	Jay Batchelor	2	6/28	Camp 4 Spike	Camp 4 Spike	
17.	E-101 SKG2 NW Diesel Dudes	John Lotze	2	7/3	Camp 4 Spike	Camp 4 Spike	
18.	E-102 SKG2 Dukes Equipment	Justin Durston	2	7/1	ICP	ICP	
19.	E-103 MBM2 Marcon Timber	Dave Landes	2	7/1	ICP	ICP	
20.	E-104 MBM2 Havillah Logging	Albert Johnson	2	7/1	ICP	ICP	
21.	E-105 MBM2 Justin Pitts	Justin Pitts	2	7/1	ICP	ICP	
22.							
23.	**E-118 ENG6 Little Pend Oreille	Thomas Boggs	5	7/1	Camp 4 Spike	Camp 4 Spike	
7. Control Operations Task: Implementation of control from South Navaree CG to Lake Chelan. Purpose: To establish a barrier to fire to the east of Safety Harbor Creek. End state: Control line anchored from South Navaree CG to Lake Chelan.							
8. Special Instructions Ensure hazard mitigations and IWI protocols are in place before taking action. See Whitepine bark info on page 24 of IAP. ** Denotes available for Initial Attack							
9. Division / Group Communication Summary							
Function	Frequency	System	Channel	Function	Frequency	System	Channel
Command Repeater	See Comm Plan			Command	See Comm. Plan		
TAC				Air To Ground	See Comm. Plan		
Prepared by (Resource Unit Leader): Name: Gary Duranceau			Approved by (Planning Section Chief) Name: Mike Crawford			Date 6/25/24	Time 1900

DIVISION ASSIGNMENT LIST		1. Branch V	2. Division / Group S	Page 2 of 2			
3. Incident Name Pioneer		4. Operational Period Date: 06/26/2024 Time: 0700-2100					
5. Operations Personnel							
Operations Chief	Jon Larson / Jesse Kiene (T)		Division / Group Supervisor	Linda Gibson / Holt Jaeger (T)			
Operations Chief (Plans)	Rob Poyner (T)		Branch Director	Alfred Wiehl / Roger Goldman			
Safety Officer	Matt Broyles / Jeremiah Maghan (T)		Air Attack Supervisor	Chad Bergren			
6. Resources Assigned this Period							
	Strike Team / Task Force / Resource Designator	Leader	Number Persons	Tentative Last Work Day	Drop Off Pt / Time	Pick Up Pt / Time	
24.	O-75 MEDIC 4	Nathan Etherington	1	6/28	Camp 4 Spike	Camp 4 Spike	
25.	O-43 REMS1	Ray Storm	5	7/8	Camp 4 Spike	Camp 4 Spike	
26.							
27.	O-141 SOFR	Kevin Pfister	1	7/2	Camp 4 Spike	Camp 4 Spike	
28.							
29.	E-18 UTV						
30.	E-93 UTV						
31.	E-94 UTV						
32.	E-148 UTV						
33.	E-149 UTV						
34.							
35.							
36.							
37.							
38.							
39.							
40.							
41.							
42.							
43.							
44.							
45.							
46.							
47.							
48.							
7. Control Operations Task: Implementation of control from South Navaree CG to Lake Chelan. Purpose: To establish a barrier to fire to the east of Safety Harbor Creek. End state: Control line anchored from South Navaree CG to Lake Chelan.							
8. Special Instructions Ensure hazard mitigations and IWI protocols are in place before taking action. See Whitepine bark info on page 24 of IAP. ** Denotes available for Initial Attack							
9. Division / Group Communication Summary							
Function	Frequency	System	Channel	Function	Frequency	System	Channel
Command Repeater	See Comm Plan			Command	See Comm. Plan		
TAC				Air To Ground	See Comm. Plan		
Prepared by (Resource Unit Leader): Name: Gary Duranceau			Approved by (Planning Section Chief) Name: Mike Crawford		Date 6/25/24	Time 1900	

DIVISION ASSIGNMENT LIST		1. Branch V	2. Division / Group Contingency/Roads				
3. Incident Name Pioneer		4. Operational Period Date: 06/26/2024 Time: 0700-2100					
5. Operations Personnel							
Operations Chief	Jon Larson / Jesse Kiene (T)		Division / Group Supervisor	Jennifer Harris / Eric Metzger (T)			
Operations Chief (Plans)	Rob Poyner (T)		Branch Director	Alfred Wiehl / Roger Goldman			
Safety Officer	Matt Broyles / Jeremiah Maghan (T)		Air Attack Supervisor	Chad Bergren			
6. Resources Assigned this Period							
	Strike Team / Task Force / Resource Designator	Leader	Number Persons	Tentative Last Work Day	Drop Off Pt / Time	Pick Up Pt / Time	
1.	O-83 TFLD	Mark Lewis	1	6/29			
2.	O-106 TFLD	Andy Hall	1	6/29			
3.	O-239 TFLD	Kory Garrie	1	7/9			
4.	O-114 TFLD (T)	TJ Whitehall	1	7/1			
5.	O-257 TFLD (T)	Craig McDonald	1	7/9			
6.	O-243 HEQB	Everardo Santillan	1	7/8			
7.	O-116 HEQB (T)	Tyler Meyer	1	6/30			
8.							
9.	C-19 CR2I Cle Elum RD	Cris Machado	18	7/8			
10.							
11.	E-69 FTRA Morris Forestry	Jake Wilcox	1	7/7			
12.	E-74 WTS2 MVP Team	Dale Conrad	1	6/27			
13.	E-75 WTS2 David Rains	Ron Laymance	1	6/30			
14.	E-83 WTS2 King Hydroseeding	Joseph Ivie	1	6/27			
15.	E-76 WTS2 Mountain View Wildfire	Wick Fife	1	7/1			
16.	E-157 WTS2 Pine Mountain Exc.	Bob Goss	1				
17.	E-143 EXC2 Delange Enterprises	Pete Delange	2	7/5			
18.	E-100 DZR4 Douglas Logging	Steve Douglas	2	7/1			
19.	**E-117 ENG6 Wenatchee River	Nicholas Gonzales	5	7/3			
20.							
21.	O-68 MEDIC 2	Joel Bower	1	7/3			
22.	O-76 MEDIC 5	Brian Linacre	1	7/7			
23.							
24.	O-85 SOFR	Andy Murrin	1	6/27			
25.							
26.	E-19 UTV						
27.	E-44 UTV						
7. Control Operations Task: Scout proposed control lines at Oss Peak and Johnson Creek. Assess structures from Deer Point to Mitchel Creek. Purpose: To protect critical values at risk. End state: To have established control lines in place that correspond to Pioneer Fire strategic plan.							
8. Special Instructions Ensure hazard mitigations and IWI protocols are in place before taking action. See Whitepine bark info on page 24 of IAP. ** Denotes available for Initial Attack							
9. Division / Group Communication Summary							
Function	Frequency	System	Channel	Function	Frequency	System	Channel
Command Repeater	See Comm Plan			Command	See Comm. Plan		
TAC				Air To Ground	See Comm. Plan		
Prepared by (Resource Unit Leader): Name: Gary Duranceau			Approved by (Planning Section Chief): Name: Mike Crawford			Date: 6/25/24	Time: 1900

DIVISION ASSIGNMENT LIST			1. Branch V		2. Division / Group Staging		
3. Incident Name Pioneer			4. Operational Period Date: 06/26/2024 Time: 0700-2100				
5. Operations Personnel							
Operations Chief		Jon Larson / Jesse Kiene (T)		Division / Group Supervisor		Jon Merager	
Operations Chief (Plans)		Rob Poyner (T)		Branch Director		Alfred Wiehl / Roger Goldman	
Safety Officer		Matt Broyles / Jeremiah Maghan (T)		Air Attack Supervisor		Chad Bergren	
6. Resources Assigned this Period							
	Strike Team / Task Force / Resource Designator	Leader	Number Persons	Tentative Last Work Day	Drop Off Pt / Time	Pick Up Pt / Time	
1.	E-151 MBM2 Dukes	Chris Boles	2	7/8			
2.	E-153 FEL1 Dukes	Nick Marley	2	7/8			
3.	E-154 SKG2 Western	Rick Lauman	2	7/8			
4.	E-155 SKG2 Mountain View	Shawn Beaman	2	7/8			
5.	E-71 GRD2 Pettet	Mark Rowe	2	6/27			
6.	E-72 GRD2 Scotts Excavating	Lucas Scott	2	7/7			
7.							
8.							
9.							
10.							
11.							
12.							
13.							
14.							
15.							
16.							
17.							
18.							
19.							
20.							
21.							
7. Control Operations Task: Remain ready and available for divisions as needed. Purpose: To assist divisions as needed to complete missions as appropriate. End state: Support suppression efforts as needed to project communities.							
8. Special Instructions							
9. Division / Group Communication Summary							
Function	Frequency	System	Channel	Function	Frequency	System	Channel
Command Repeater	See Comm Plan			Command	See Comm. Plan		
TAC				Air To Ground	See Comm. Plan		
Prepared by (Resource Unit Leader): Name: Gary Duranceau			Approved by (Planning Section Chief) Name: Mike Crawford			Date 6/25/24	Time 1900

DIVISION ASSIGNMENT LIST		1. Branch	2. Division / Group		BOAT		
3. Incident Name Pioneer		4. Operational Period Date: 06/26/2024 Time: 0700-2100					
5. Operations Personnel							
Operations Chief	Jon Larson / Jesse Kiene (T)		Division / Group Supervisor	Nate Crawford			
Operations Chief (Plans)	Rob Poyner (T)		Branch Director				
Safety Officer	Matt Broyles / Jeremiah Maghan (T)		Air Attack Supervisor	Chad Bergren			
6. Resources Assigned this Period							
	Strike Team / Task Force / Resource Designator	Leader	Number Persons	Tentative Last Work Day	Drop Off Pt / Time	Pick Up Pt / Time	
1.	O-161 TFLD Boat Coordinator	Cameron Chambers	1	7/3			
2.	O-50 TFLD	Todd Olson	1	6/30			
3.	O-160 TFLD	Brian Turner	1	7/3			
4.	O-162 HEQB	Nicolas Glatt	1	7/3			
5.	O-163 HEQB (T)	Emma Ahlrichs	1	7/3			
6.							
7.	E-1 TBOT WA-NCP NPS		1				
8.	E-3 TBOT Chelan Co. F&R#7		2				
9.	E-12 TBOT WA-OWF Chelan RD		1				
10.	E-91 TBOT DNR Mud Puppy		1				
11.	E-98 TBOT Chelan County Sheriffs		1				
12.	E-43 TBOT Llama Boat		1				
13.							
14.							
15.	O-136 MEDIC 6	Steve Medina	1	7/8			
16.	O-152 EMT 1	Ivan Huld	1	7/8			
17.							
18.							
19.							
20.							
21.							
22.							
23.							
24.							
7. Control Operations							
Task: Contain fire spread to the southwest where terrain and fuels allow for high probability of success. Assess fire perimeter progression to the west/southwest at higher elevations.							
Purpose: To slow fire progression, provide time for suppression tactics, and prep around critical values.							
End state: Minimize fire impacts to critical values including private inholdings and Forest Service infrastructure							
8. Special Instructions							
<ul style="list-style-type: none"> In large or long-term spike camps use helicopters, boats, or pack stock to deliver portable backcountry latrines and remove human waste if necessary. If camp does not have adequate pack, boat, or air support for human waste management, establish community latrines well away from water sources and common areas. Use human waste bags, if necessary. Ensure hazard mitigations and IWI protocols are in place before taking action. 							
9. Division / Group Communication Summary							
Function	Frequency	System	Channel	Function	Frequency	System	Channel
Command Repeater	See Comm Plan			Command	See Comm. Plan		
TAC				Air To Ground	See Comm. Plan		
Prepared by (Resource Unit Leader): Name: Gary Duranceau			Approved by (Planning Section Chief) Name: Mike Crawford		Date	Time	
					6/25/24	1900	

DIVISION ASSIGNMENT LIST		1. Branch	2. Division / Group H				
3. Incident Name Pioneer		4. Operational Period Date: 06/26/2024 Time: 0700-2100					
5. Operations Personnel							
Operations Chief	Jon Larson / Jesse Kiene (T)		Division / Group Supervisor				
Operations Chief (Plans)	Rob Poyner (T)		Branch Director				
Safety Officer	Matt Broyles / Jeremiah Maghan (T)		Air Attack Supervisor		Chad Bergren		
6. Resources Assigned this Period							
	Strike Team / Task Force / Resource Designator	Leader	Number Persons	Tentative Last Work Day	Drop Off Pt / Time	Pick Up Pt / Time	
1.							
2.							
3.							
4.							
5.							
6.							
7.							
8.							
9.							
10.							
11.							
12.							
13.							
14.							
15.							
16.							
17.							
18.							
19.							
20.							
21.							
22.							
23.							
24.							
7. Control Operations Task: Complete a comprehensive inventory of critical values, proposed control line options to protect those values and the risk to responders associated with those actions in SA4. Purpose: To analyze the strategy as probability vs success. End state: A long term durable strategic plan for the Pioneer Fire.							
8. Special Instructions							
<ul style="list-style-type: none"> In large or long term spike camps use helicopters, boats, or pack stock to deliver portable backcountry latrines and remove human waste if necessary. If camp does not have adequate pack, boat, or air support for human waste management, establish community latrines well away from water sources and common areas. Use human waste bags, if necessary. Ensure hazard mitigations and IWI protocols are in place before taking action. 							
9. Division / Group Communication Summary							
Function	Frequency	System	Channel	Function	Frequency	System	Channel
Command Repeater	See Comm Plan			Command	See Comm. Plan		
TAC				Air To Ground	See Comm. Plan		
Prepared by (Resource Unit Leader): Name: Gary Duranceau			Approved by (Planning Section Chief): Name: Mike Crawford		Date 6/25/24	Time 1900	

AIR OPERATIONS SUMMARY ICS-220

Incident Name / Number / Sunrise / Sunset / Airport / Pumpkin
 Pioneer / WA-SES-000173 / 05:04 / 21:05 / S10 / 21:35

General Remarks, Safety Notes, Hazards, Air Operations Special Equipment, etc.

*Order All Aircraft through Command to Helibase.
 *Sanitize Buckets before changing water sources.
 *Clear drop area/line before initiating drop sequence.
 *Be cognizant of all overhead and environmental hazards while working with Aircraft.
 *All GPS is to be collected in DMM
 *** WINDS: return to helibase if winds become unmanageable.

*Aviation daily cost to: 2024.pioneer.finance@firenet.gov
 *Aviation daily cost to: pioneerhelibase2024@gmail.com

Time Prepared 19:00 Shut down 21:00	Date Prepared 6/25/2024 Operational Period - Date 6/26/2024	Prepared By Mark Hocken, AOB
Helibase Information Pioneer/ Helibase Localton 47 51.96 N 119 56.56 W Pioneer HB (Chelan) HB Phone (971) 762-8575 Valley HB Phone (Methow) (971) 727-7255	TFR (A-74) Surface to 10,000' 4/1477 Freq 123,4000 In Effect - 24 Hours Helispots H1 48 10.755N / 120 31.803W H5 48 12.162N / 120 35.447W H10 48 14.050N / 120 36.461W H12 48 13.325N / 120 35.908W H14 (Stehakin AP) 48 20.75N / 120 43.25W H15 48 08.754N / 120 29.813W H16 48 07.74N / 120 29.55W H25 47 59.212N / 120 16.526W	Operational Period - Time 0700-2100 Medivac Ship Information Medvac ship N-684H 2 EMTs, Litter Kit call helibase to launch Make/Model: 407 Location: Chelan Request Procedure for This Aircraft: Communications on Command, Short-Haul North Casade N-125CL Order through Helibase/CWICC, CWICC (509) 884-3473 x 2 40 min to 1 hour response on to 2100

Incident Frequencies	RX	Tone	TX	Tone	AM/FM	Position	Name	Phone	EQUIPMENT/SUPPLIES
Air to Air Primary (A-8)	123.4000		123.4000		AM	AOBD (Planning)	Mark Hocken	(541) 261-1085	Com (Chelan) Trailer E-20
Air to Air Secondary (A-9)	118.2750		118.2750		AM	AOBD (Field)	Ted Hass	(541) 646-1318	Hand Wash Station E-47 Water Tender E-77
A/G Pri Tactical (A-10)	169.1500		169.1500		FM	ASGS-T	Ben Thayer	(208) 830-1636	Water Tender E-14
A/G Sec Operational (A-11)	168.4000		168.4000		FM	HEBM-T Pioneer	Ben Wagner	(206) 473-2165	Com (Valley) Trailer E-150
TOLC	166.6125		166.6125		FM	HEBM Pioneer	Jerry Rule	(253) 548-7711	
DECK	163.1000		163.1000		FM	HEBM Valley	Randy McLandress	(509) 668-7243	
COMMAND						ATGS	Jerry Messinger	(541) 306-0907	
						HLCO	Chad Bergren	(541) 219-2594	
						UAS	Ryan Gregg	(360) 852-2296	
						UAS	Marshall Wallace	(509) 670-6365	
AIR GUARD	168.6250		168.6250	110.9	FM	CWICC	Aircraft Desk	(509) 884-3473 x2	
VMED 29	155.3475	156.7	155.3475	156.7	FM	UAO	Cory Dolberry	(509) 668-2801	

HELICOPTERS - Assigned												
FAA #	TYPE	Make/Model	Helibase	Start	Avail	Remarks	FAA #	TYPE	Make/Model	Airport	Avail	Remarks
HB-16FH (A-22)	1	UH-60	Chelan	0800	0900	BKT/LL	H-205TK	2	Bell 205A	Chelan	0800	0900 Rapps
HB-17FH (A-23)	1	UH-60A	Chelan	0800	0900	BKT/LL						
HB-161KA (A-24)	1	K-1200	Chelan	0800	0900	BKT/LL						
HB-344RA (A-45)	1	CH-47D	Chelan	0800	0900	BKT/LL						
H-304HA (A-31)	2	Bell 205A	Chelan	0800	0900	BKT/LL						
H-407RL (A-1)	3	407	Chelan	0800	0900	**Unavailable**						
H-684H (A-46)	3	407	Chelan	0800	0900	BKT/LL/Recon/HLCO						
H-544AS (A-60)	3	AS350B3	Chelan	0800	0900	HLCO/Recon						

FIXED WING AA/HLCO													
Call Sign	Type	Make/Model	Base	Start	Avail	Remarks	FAA #	Call Sign	Make/Model	Base	Start	Avail	Remarks
UR-31	3	Altix	Lucerne	0600	2200	IR/PSD	N-586DV (A-42)	610	Commander	WEN	0900	1000	Assigned ATGS
							H-544AS (A-60)	4AS	AS350B3	Chelan	0800	0900	Assigned HLCO
							N-197GB	617	Commander	Wenatchee	0900	1000	Wenatchee IA (not assigned)

INCIDENT I RADIO COMMUNICATIONS PLAN (ICS 205)
 Controlled Unclassified Information//Basic

1. Incident Name:	PIONEER	3. Operational Period:	Date/Time From: 06/26/2024 0600	Date/Time To: 06/27/2024 0600
2. Date/Time Prepared:	Date: 06/25/2024 Time: 1600			

4. Basic Radio Channel Use:										
Zone Group	Ch #	Function	Channel Name/Trunked Radio	Assignment	RX Freq	RX Tone/NAC	TX Freq	TX Tone/NAC	Mode (A,D, or M)	Remarks
	1	TACTICAL	TAC 1	DIV A & S	168.0500	123.0	168.0500	123.0	A	
	2	TACTICAL	TAC 2	DIV D	168.2000	123.0	168.2000	123.0	A	
	3	TACTICAL	TAC 3	DIV Z	168.6000	123.0	168.6000	123.0	A	
	4	TACTICAL	TAC 4	DIV H	166.7250	123.0	166.7250	123.0	A	
	5	TACTICAL	TAC 5	CONTINGENCY	166.7750	123.0	166.7750	123.0	A	
	6	TACTICAL	TAC 6	BOAT	168.2500	123.0	168.2500	123.0	A	
	7	COMMAND	CMD 7	ALL	168.4750	123.0	165.4000	123.0	A	CHELAN BUTTE
	8	COMMAND	CMD 8	ALL	169.5375	123.0	164.7125	123.0	A	OLD MAID MT
	9	COMMAND	CMD 9	ALL	170.4500	123.0	168.1000	123.0	A	MOORE MT
	10	COMMAND	CMD 10	ALL	170.0125	123.0	165.2500	123.0	A	SLIDE RIDGE
	11	COMMAND	CMD 11	ALL	170.4125	123.0	165.9625	123.0	A	FOX MT
	12	TACTICAL	A/G PRI	ALL DIVS	169.1500	000.0	169.1500	000.0	A	
	13	AIR TO GROUND	A/G SEC	ALL DIVS	168.4000	000.0	168.4000	000.0	A	
	14	AIR TO GROUND	A/G 3	ALL DIVS	166.6125	000.0	166.6125	000.0	A	TAKE OFF LANDING CHANNEL
	15	AIR TO GROUND	VMED 29	ALL DIVS	155.3475	156.7	155.3475	156.7	A	AIR EMS COORDINATION
	16	AIR TO GROUND	AIRGUARD	ALL DIVS	168.6250	000.0	168.6250	110.9	A	EMERGENCY AIRCRAFT CONTACT

5. Special Instructions: 24 hour staffing: PIONEER COMMUNICATIONS PHONE NUMBER: (208) 891-7948 / CURRENT CLONE "PIE 6-21"

6. Prepared By COML
 Name: SETH BAUMGARTEN
 Signature: *Seth Baumgarten*
 ICS 205
 IAP Page
 Date/Time: 6/25/24 1600

Health & Safety Message

Accident Avoidance

- Speak up if you see something that looks wrong!!!
- Get a good briefing prior to beginning tasks
- Utilize your risk management process (IRPG green pages)
- Ask if you are unsure



HELP BREAK THE “ERROR CHAIN”!!!

**“Working safely may get old, but so do those who practice it.”
— Author Unknown**

Remember communication is always key!!!

Please reach out to us if you have and safety concerns or questions. Have a safe and productive day!!!

Matt Broyles SOFC, Jeremiah Maghan SOFC (t) 6/26/2024



Human Resource Specialist Message

**Pioneer Fire
June 26, 2024**

Drug and Alcohol Guidelines

The Incident Command Team and host agencies are committed to providing a drug and alcohol free work environment for all incident members.

There is **zero-tolerance** for drug or alcohol violations.

If drugs or alcohol use are observed, please report these incidents immediately to your supervisor or the Human Resource Specialist.

Margaret Dietrich,
Human Resource Specialist
360-701-3154

Thought for the day: “Teamwork is the ability to work together toward a common vision. The ability to direct individual accomplishments toward organizational objectives. It is the fuel that allows common people to attain uncommon results.” — Andrew Carnegie

FINANCE MESSAGE

Finance Email: 2024.pioneer.finance@firenet.gov

Finance Phones: *Will Have New Phone Number to Share tomorrow. Team 7 Finance*

This incident requires electronic documentation. Please email your time to the address above. Scanned PDF's please, no .JPG's. Feel free to call finance for help if needed. Scanners are also available at ICP.

Required Documents

Overhead, Agency Crews & Cooperators	Contract Resources
Finance docs needed: Resource Order, Manifest, Cooperative Agreement, Casual Hire Form w/ECI# (as applicable)	Finance docs needed: Resource Order, Manifest, Full Contract/Agreement, Certifications (<i>if required</i>) Pre-Inspection
Daily: CTRs, Shift Tickets CTRs should be named as: CTR_RO#_YYMMDD-DD (Ex: CTR_O235_240605-07) Shift Tickets should be named as: ST_RO#_YYMMDD-DD (Ex: ST_E5_240623-27)	Daily: CTRs, Shift Tickets, receipts (claims, etc.) NOTE: Document travel times and odometer readings
Demob: Signed OF-288; Signed OF-286	Demob: Contractor Evaluations, Shift Tickets, receipt(s) for Addition/Deductions, Post-Inspection, Signed OF-286
"H-Pay"- Entitlement to Hazardous Pay Differential (5 CFR 550.904) – Hazard pay MUST be supported by a justification. If justification is not provided, you chance losing your entitlement.	Please call finance regarding issues with your time: No one on List today, any questions for Finance, please email us. Tomorrow we will have a phone number for Team 7 Finance Thank You.

Incident Name: **Pioneer**
 Incident Number: **WA-SES-000173**
 Financial codes:
 WA DNR – **221-LDW**
 DOI – **RZ79**
 USDA – **PNRZ79 (1522)**

Please make sure you check in using QR code on the front of the IAP and then email your time daily.
THANK YOU!!



OKANOGAN-WENATCHEE NATIONAL FOREST

Resource Guidelines for Fire Suppression

Fire: Pioneer

Location: Pioneer Creek, North shore of Lake Chelan

Date: 6/18/2024

Resource Advisors

Lead READ: Brigitte Ranne 509-663-6118, brigitte.ranne@usda.gov

REAF: Hector Rodriguez 509-393-5379, Hector.Rodriguez3@usda.gov

REAF: Eireann Pederson 360-854-8197, eireann.pederson@usda.gov

HUMAN SAFETY IS THE HIGHEST PRIORITY FOR EVERY EMERGENCY RESPONSE ACTION

MIST for Spike Camp and Lucerne Forward Operating Base Management

- Employ minimum impact suppression tactics (MIST) where feasible, especially in remote or sensitive areas.
- If spike camps are necessary, use existing, or previously impacted campsites where available. If existing campsites are not available; use your local resource advisor to help identify the most resilient sites in rocky or sandy soils. Avoid camping in wet meadows, along streams, or on lake shores.
- Store food properly so that it is not accessible to wildlife. Consider hanging food in trees at least 15 feet off the ground and 5 feet from the trunk of the tree, or store food in sealable containers. Store food away from the campsite (300 feet is ideal) to reduce the risk of human and bear (and rodent!) conflicts.
- Do not let garbage and food scraps accumulate in camp. All garbage and food scraps need to be removed from the camp ASAP and before leaving the site.
- Minimize disturbance to land in preparing bedding and campfire sites. Do not clear vegetation, trench, or excavate a flat spot to create bedding sites.
- Do not use nails in trees. Don't construct camp furniture.
- If a campfire is built for warmth in the evening, build either a pit or mound fire. Use dead and down firewood. Use small diameter wood that burns down more cleanly. Don't burn plastics or aluminum - pack it out with the rest of the camp garbage.



- In small spike camp situations (not Lucerne), individuals should use the "cat-hole" method of disposing of human waste. Toilet seats should be located a minimum of 200 feet from water sources. Holes should be dug 6-8 inches deep.

In large or long term spike the camps use helicopters, boats, or pack stock to deliver portable backcountry latrines and remove human waste if necessary. If the camp does not have adequate pack, boat, or air support for human waste management, establish community latrines well away from water sources and common areas. Use human waste bags, if necessary.

Dipping and Drafting

- No cross-dipping between water bodies. All buckets or snorkels should be cleaned, inspected, and dried in the sun if they must be used between lakes. Dipping in small lakes must be pre-approved by the READ or AA.
- When drafting, use already disturbed areas for stream access (road crossings, dispersed campsites) to reduce the need for riparian vegetation clearing.
- Use screens (3/32" inch) for all pumping operations.
- Use containment pads and basins under pumps and fuel cans. Ensure a spill kit is present with every operating pump.

Invasive Species

- The fire is burning within an infestation of common crupina, a WA State Class A Noxious weed. Prevent spread of crupina off site – plan to wash hose and other equipment. Request fire fighters brush boots before boarding boat or **before entering National Park Service Land**.
- Inspect slings and remove all plant/soil material prior to use.
- Ensure all camps, staging areas, helispots and cargo areas are free of invasive plants to prevent spread to un-infested areas.
- Weed wash all vehicles when they arrive to the incident and when demobed.

Fisheries /Aquatic Recommendations

- If trees must be felled in riparian areas for suppression or safety reasons, fell them toward streams where possible and minimize bucking where possible.
- Non-mechanized suppression activities are recommended within Riparian Reserves (150-300 ft from stream channel). For example, consider hand lines instead of dozer lines when feasible.

Retardant Use

- Retardant avoidance areas are present in the fire suppression area for both aquatic and terrestrial species.
- Track all retardant drops – locations and amounts.
- Report all mis-applications ASAP to READ. Monitoring and reporting of misapplications is required.

Wet Meadows

- No line or other disturbance in wet meadows in the Summer Blossom area (east of South Navarre campground above and below the 8200 road) and at Coyote and Poison Springs at the headwaters of their respective creeks.

Dry Meadows

- Minimize disturbance from staging and parking areas in dry meadows. These areas recovery slowly and are vulnerable to invasive plant infestation.

White Bark Pine

- Avoid cutting white bark pine whenever possible. Needles of 5 keep it alive! Ask READ for help with ID.

Burnout operations

- Plan to protect whitebark pine of all ages and mature cold and moist forest during burnouts. READ consultation and line officer approval is required for burn plans that include these forest types.
- During burnouts modify firing to retain large trees, large snags and large down wood in forests whenever possible.
- Minimize total acres burned in burnouts.
- Incorporate typical resource protection measures used in RX burning whenever it is safe and practical to do so (such as retention of green islands in moist areas).
- Provide a map of areas that were burned as part of the burnout operation (for use in emergency consultation).

Cultural Resources

- If cultural resources are discovered during suppression activities, leave on site and notify READ.

Needles of five, keep it alive!

Please do not cut WHITEBARK PINES.

If a tree's needles grow in clusters of five, leave it to grow!

Whitebark pines live in the mountains, often in areas too harsh for any other tree. More than 100 kinds of living things depend on these special pines, including bears and many bird species. People love whitebark pines for their beauty and strength, and we also need them because they trap snow in the high country, slowing spring runoff and helping provide water to the valleys in summer.

But whitebark pines are in trouble. Many whitebark forests now contain more dead pines than living ones.

- Blister rust, a non-native fungus, weakens the trees, reduces cone production, and eventually causes death.
- Whitebarks are also killed by bark beetles, and beetle epidemics may increase with global climate change.
- Wildfires may kill whitebark pines, although burned areas are good habitat for seedlings. Careful management of fire is essential.



So remember: *If it has five, let's keep it alive!*

For more information and to learn how you can help,
visit the Whitebark Pine Ecosystem Foundation at www.whitebarkfound.org.

Photos and Videos Needed!

Photos and short videos (30 seconds or less) are needed to tell the story of the Pioneer Fire.

Please send them to PIO staff

via email: 2024.pioneer@firenet.gov

Provide your name for credit and basic info about where the photo was taken and what's happening in it.

Your photos and videos are being posted at:

Inciweb: Pioneer Fire

Facebook: - <https://www.facebook.com/nwteam7>

- <https://www.facebook.com/pioneerfireinformation>

- <https://www.facebook.com/cwafireinfo>

LOST & FOUND

We have lost and found! Please stop by the Info shop in ICP to find your lost goods!

Thank you!

LOGISTICS NOTES

Pioneer Fire ICP

Breakfast 0530 – 0900
Lunch @ Refer Trailer – 0500 - 2100
Dinner 1800 -2100
Shower 0500 – 1200 & 1400 – 2200
Supply 0600 – 2200
Ground Support 0700 – 2100
Fuel Tender 0700 – 2100
Weed Wash 0700 – 1400 & 1600 – 2000

FOB Lucerne

Breakfast 0600 - 0900
Lunch – Pickup with Breakfast
Dinner 2030 – 2130
Shower 0500 – 1200 & 1400 – 2200
Supply 0600 – 2200

Ground Support Contact Numbers:

Casey Glade 435-704-4702, Joe Keady 541-733-6701

Ordering Information

Submit all orders on General Message Form 213 to the following email address;

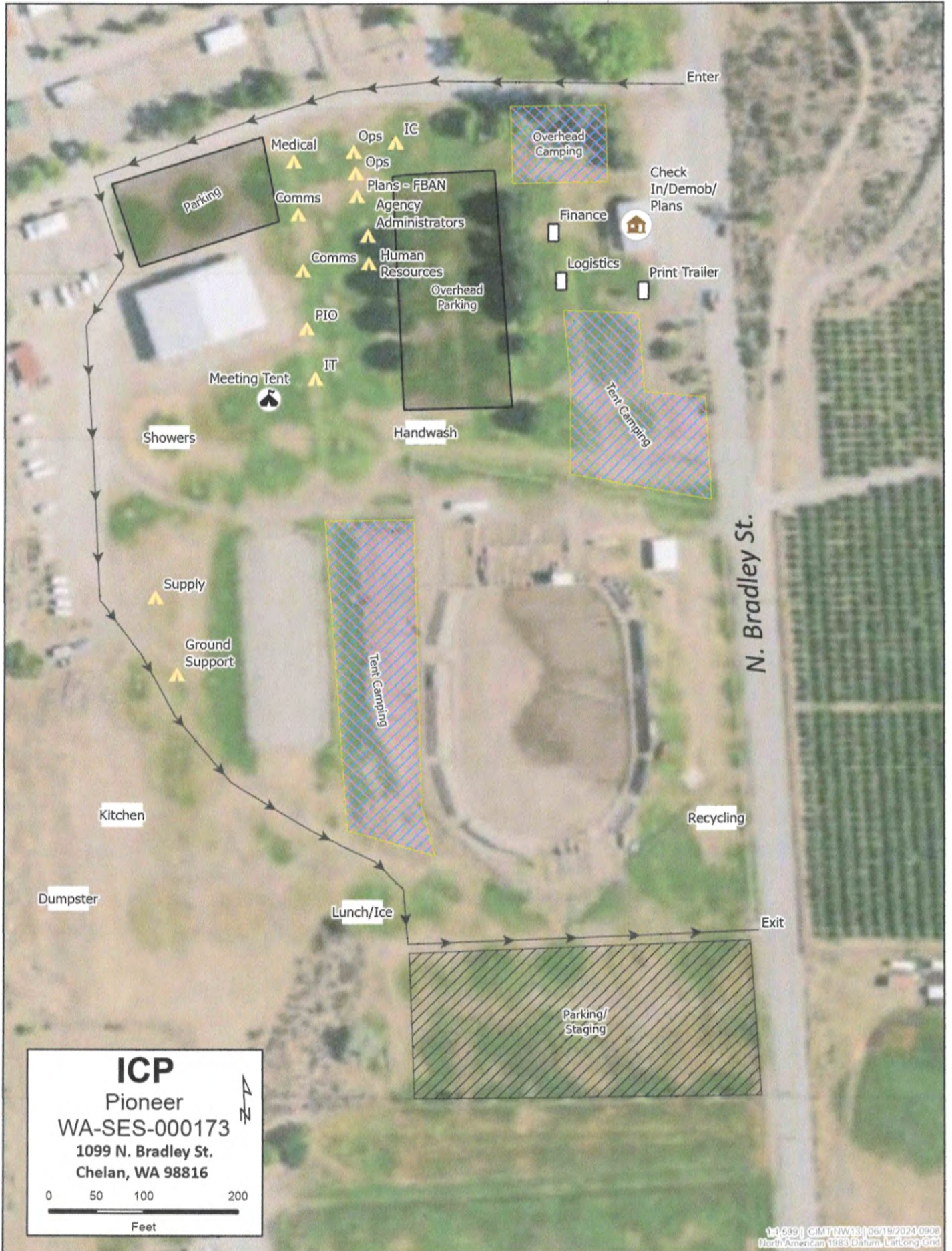
2024.pioneer.ordering@firenet.gov

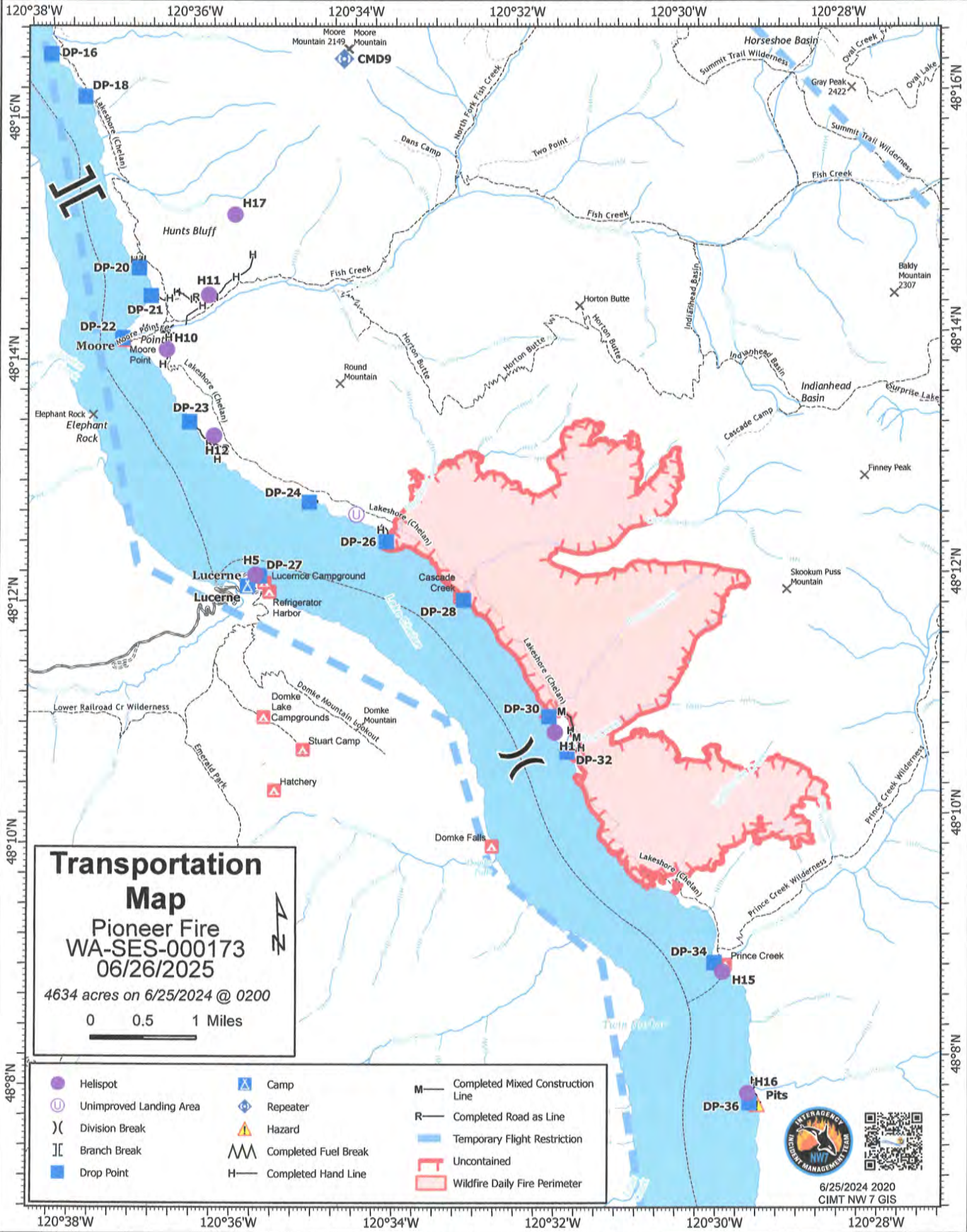
Recycling Scorecard on Incident

Plastic Bottles	436-lbs	Aluminum Cans	135 – lbs
Cardboard	4800-lbs	Office Paper	389-lbs
Plastics 1 & 2	85-lbs	Glass	7-lbs
Batteries	70-lbs	Food Composting	3800-lbs
Cooking Oil	125-gal	Food Donations	89-lbs

Consider making it a habit to use the services provided. Good habits are those repetitive actions or behaviors you want to repeat. They have positive physical, emotional, or psychological consequences.







Transportation Map
Pioneer Fire
WA-SES-000173
06/26/2025
 4634 acres on 6/25/2024 @ 0200

0 0.5 1 Miles

- | | | |
|---------------------------|-------------------------|---------------------------------------|
| ● Helispot | Ⓜ Camp | M — Completed Mixed Construction Line |
| Ⓢ Unimproved Landing Area | Ⓡ Repeater | R — Completed Road as Line |
|) (Division Break | ⚠ Hazard | — Temporary Flight Restriction |
| ⌌ Branch Break | Ⓜ Completed Fuel Break | — Uncontained |
| ■ Drop Point | H — Completed Hand Line | ■ Wildfire Daily Fire Perimeter |



6/25/2024 2020
 CIMT NW 7 GIS



Team 7 Line Supply Order		Order #			
Date & Time Order Placed	Deliver To Location/Time (Division, Drop Point, Heli Spot, Lat/Long)	Delivery Method (Driver, Helo, DIVS to P/U)			
Order received in Communications (name & time)					
Ordered by (name and Position)					
Ground Contact					
Order received in Supply by (name & time)					
Contact Freq.					
Order received in Transportation by (name & time)					
Special Instructions/line length/ elevation					
Order shipped to line by (name & time)					
#	Item	Amount	#	Item	Amount
1	Meals #1842 MRE 12/Cs		33	Bath in a Bag, Large # 0712	
2	Water 0048 5 gal cubies		34	Bath in a Bag, Small # 0206	
3	Gatorade 24/Cs		35	Coffee Kit #0480	
4	Batteries, AA #0030 24/pg		36	Coffee 3lb Can	
5	Batteries, AAA #7471 24/pg		37	Folda-Tank 1500 gal. # 0664	
6	Gas Unleaded/5 gal		38	Pumpkin 3000 gal. # 0568	
7	2 Cycle Oil #7724 5 Gal mix		39	Backpack Pump # 0909	
8	2 Cycle Oil #3444 1 Gal. mix		40	Mark III pump + Kit # 0148	
9	Diesel (5 gal.)		41	Lightweight Pump + Kit # 8606	
10	Bar Oil #1880 Gal.		42	Volume Pump + # 1222	
11	Bar Oil # 1869, Qt		43	Hose 1 1/2" # 1239 100' lg	
12	Shovel # 0171		44	Hose 1" # 1238 100' lg	
13	Pulaski # 0146		45	Hose 3/4" # 1016 50' lg	
14	McLeod # 0296		46	Reducer 1 1/2" to 1" # 0010	
15	Combi #1180		47	Reducer 1" to 3/4" # 0733	
16	Chainsaw Kit # 0340		48	Gated "Y" 1 1/2" # 0231	
17	Drip Torch # 0241 Empty		49	Gated "Y" 1" # 0259	
18	Fusee #0105		50	Gated "Y" 3/4" # 0904	
19	Sleeping Pad # 1566		51	In-line Tee 1 1/2" to 1" # 0230	
20	Sleeping Bag # 0022		52	Nozzle KK 1 1/2" # 1082	
21	Fly Tent #0070		53	Nozzle KK 1" # 1081	
22	Plastic Sheeting # 0143		54	Nozzle 3/4" # 0136	
23	Parachute Cord # 0533		55	Nozzle, Forester 1" # 0024	
24	Fiber Tape # 0222		56	Sprinkler kit #1048	
25	Garbage Bags # 0021		57		
26	Leadline 3000 lbs. # 0528		58		
27	Cargo Net 3000lb # 0531		59	Team 7 Hose Lay Kit	
28	Swivel 3000lb # 0526		60		
29	Slingshot Bag 72 gal. Blivet # 0426		61		
30	Foam 5 gal. # 1145		62		
31	Toilet Paper # 0142		63		
32			64		

TEAM 7 HOSE LAY KIT

7/16/2014

Item	Amount
1 1/2 in. synthetic hose	1000 ft.
1 in. synthetic hose	500 ft.
3/4 in. garden hose	500 ft.
1 1/2 in. gated wye	5 ea.
1 1/2 in. - 1 in. reducers	5 ea.
1 in. combination nozzle	5 ea.
1 in. - 3/4 in. reducer	5 ea.
3/4 in. valve, shutoff, ball	5 ea.
3/4 in. Nozzle	5 ea.
3/4 in gated wyes	5 ea.

SPRINKLER KIT NFES # 1048

Item	Amount
Sprinkler head w/couplings	4 ea.
3/4 in. garden hose	250 ft.
1 1/2 x 1 1/4 x 1 in. Tee	4 ea.
1 x 3/4 reducer	4 ea.
1 1/2 in. - 1 in. reducers	1 ea.
3/4 in gated wyes	2 ea.
3/4 in. valve, shutoff, ball	4 ea.
3/4 in. Nozzle	1 ea.
3/4 pressure regulator,	4 ea.
1 in. nozzle, plastic 60 GPM	1 ea.
10 in. adjustable wrench	1 ea.

LINE ORDER PROCESS

Line orders from the field should go through the Communication Unit via radio (primary) or 24-hour phone number shown cover of the IAP. All other supply requests should be submitted, in-person, to the Supply Unit.

Boat Schedules

Contact Phone number	509-682-4584	509-682-4584	509-682-4584	509-669-5045
Days	Lady of the Lake (S)	Lady Express (M)	Lady Liberty (F) (Dual trip day)	Lady Liberty (F) (single trip day)
20-Jun	Departs from DP90 Chelan	Departs from DP90 Chelan	Departs from DP90 Chelan	Departs from DP 14 Stehekin
21	available	available	available	available
22	available	available	available	available
23	available	available	available	available
24	available	available	available	available
25	available	available	available	available
26	available	available	available	available
27	available	available	available	available
28	available	available	available	available
29	available	available	available	available
30	available	available	available	available
1-Jul	available	available	available	available
2	available	available	available	available
3	available	available	available	available
4	available	available	available	available
5	available	available	available	available
	Schedule	Schedule	Schedule	Schedule
	Chelan DP90 0830 Depart	Chelan DP90 0830 Depart	Chelan DP90 0800 Depart	Stehekin DP90 1040 Depart
	Fields Pt DP84 0945	Fields Pt DP84 0920	Fields Pt DP84 0815 **	Fish Crk DP21 1100**
	Prince Crk DP34 1100 **	Prince Crk DP34 1000 **	Lucerne DP27 0900 **	Swartz Dk DP23 1105**
	Lucerne DP27 1145	Lucerne DP27 1040	Stehekin DP14 0930 Arrival	Lucerne DP27 1110
	Moore pt DP22 1215 **	Stehekin DP14 1100 Arrival	1 hour layover	Prince crk DP36 1135
	Stehekin DP14 1230 Arrival	1.5 hour layover	Stehekin DP14 1030 Depart	Fields Lndg DP84 1300
	1 hour layover	Stehekin DP14 1230 Depart	Lucerne DP27 1100 **	Prince crk DP36 1350
	Stehekin DP14 1400 Depart	Lucerne DP27 1250	Fields Pt DP84 1145 **	Lucerne DP27 1420
	Moore pt DP22 1415 **	Prince Crk DP34 1520 **	Chelan DP90 1200 Arrival	Stehekin DP90 1425 arrival
	Lucerne DP27 1445	Fields Pt DP84 1410	1 hour layover	
	Prince Crk DP34 1515 **	Chelan DP90 1500 Arrival	Chelan DP90 1300 Depart	
	Fields Pt DP84 1645	Chelan DP90 1645	Fields Pt DP84 1315 **	
	Chelan DP90 1800 Arrival	Lucerne DP27 1400 **	Lucerne DP27 1400 **	
		Stehekin DP14 1430 Arrival	Stehekin DP14 1430 Arrival	
		1 hour layover	1 hour layover	
		Stehekin DP14 1530 Depart	Stehekin DP14 1530 Depart	
		Lucerne DP27 1600 **	Lucerne DP27 1600 **	
		Fields Pt DP84 1645 **	Fields Pt DP84 1645 **	
		Chelan DP90 1700 Arrival	Chelan DP90 1700 Arrival	
				Different Company
	** request only			
	Schedule boats early, space is limited.			
	Give alternate time and/or dates incase boats are overbooked.			

DIVISION PLANNING WORKSHEET

NEXT OPERATIONAL DATE	DIVISION/GROUP	NAME OF DIVISION/GROUP
-----------------------	----------------	------------------------

__ ROLL OVER ASSIGNED RESOURCES	__ EXCESS RESOURCES	__ CORRECTION TO 204
---------------------------------	---------------------	----------------------

E OR C NUMBER	RESOURCE DESIGNATOR	LEADER	NO. PERSONS	COMMENTS

OPERATIONAL PROJECTION (Task, Purpose, End State) 24 hrs

OPERATIONAL PROJECTION (Task, Purpose, End State) 48 hrs

OPERATIONAL PROJECTION (Task, Purpose, End State) 72 hrs

__ REQUEST FOR ADDITIONAL RESOURCES

NUMBER	TYPE	RESOURCE KIND	DATE NEEDED

CRITICAL NEEDS: If your resource request is critical, describe the mission and the duration resources are needed.

Check In Message

- Please complete the virtual check-in process via the QR code on the front cover.
- You are not checked in until you provide the following:
 - 1) Red Cards
 - 2) Roster/Manifest
- Please email documents to: 2024.pioneer.checkin@firenet.gov

Any Questions:

Phone: 509-661-5372

Email: 2024.pioneer.checkin@firenet.gov

Demob Message

- Fliers complete the "Air Travel Request" via the QR code on the front cover 72 hours prior to flight date.
- Return supplies to the Cache.
- Return radios, antennas, etc., to Communications.
- Contact Finance about closing out your paperwork.
- Once the above items have been completed, SCAN the QR code on the front cover and complete the demob questions.

Any Questions:

Phone: 509-662-5376

Email: 2024.pioneer.demob@firenet.gov





Pioneer Fire WA-SES-000173

C&G Contact List

Incident Commander	LeFevre	Nate	nlefevre@blm.gov	(541) 255-6595
Deputy Incident Commander	Orr	Chris	christopher_orr@nps.gov	(530) 640-1464
Safety Officer	Broyles	Matt	admbroyles@gmail.com	(541) 591-6151
Liaison Officer	Christianson	Shawn	shawn.christianson.adm@colvilletribes.com	(509) 429-3348
Liaison Officer	Suba	Mark	marksuba12@gmail.com	(541) 219-9048
Liaison Officer	Brody	Greg	lmgregbrody@gmail.com	(503) 482-8071
Liaison Officer (T)	Marchand	Rhonda	rmarchand76@yahoo.com	(509) 634-1166
Public Information Officer	Stecker	Livia	livia_stecker@firenet.gov	(509) 675-3504
Finance Section Chief	Westgate	Patty	pattywestgate@gmail.com	(541) 892-8432
Finance Section Chief (T)	Bailey	Lori	lori.bailey@usda.gov	(541) 589-0806
Operations Section Chief	Larson	Jon	jon_larson@fws.gov	(208) 631-6488
Operations Section Chief	Merritt	Seth	smerritt@esf-r.org	(425) 501-7384
Operations Section Chief	Kiene	Jesse	jkiene@blm.gov	(541) 531-5568
Operations Section Chief	Poyner	Rob	robert.poyner@usda.gov	(425) 512-2621
Logistics Section Chief	Yager	Max	orcamax2015@gmail.com	(541) 690-6627
Logistics Section Chief	Vaughan	Franklin	franklin.vaughan@usda.gov	(859) 619-7244
Logistics Section Chief	Wedekind	Cindy	cwedekind59@gmail.com	(541) 450-1136
Planning Section Chief	Crawford	Michael	mrcrawfor@blm.gov	(458) 212-0501
Planning Section Chief (T)	Plummer	Debbie	dplummer@blm.gov	(509) 991-0334

MEDICAL PLAN (206 WF)

1. Incident/Project Name			2. Operational Period				
Pioneer Fire			Date/Time: 06/26/24 0700-2100				
3. Ambulance Services							
Name	Complete Address	Phone	Advanced Life Support (ALS)				
Lake Chelan EMS	Chelan, WA	911	Yes	No			
4. Air Ambulance Services							
Name	Phone/Channel	Frequency, Type of Aircraft & Capability					
Life Flight- Brewster	1-800-232-0911 911	VMED 29, Rotor, ALS, 24 hr					
Airlift NW- Wenatchee	1-800-426-2430 911	VMED 29, Rotor, ALS, 24 hr					
Wenatchee Short Haul- Chelan Airport	Command 7,8,9,10,11 (Linked)	VMED 29, Rotor, BLS, Daytime, Short Haul					
Snohawk 10- Snohomish	1-800-258-5990 911	VMED 29, Rotor, ALS, Daytime, Hoist					
Spokane County Hoist- Spokane	1-509-532-8930 911	VMED 29, Rotor, ALS, 24 hr, Hoist Daytime Only					
5. Hospitals							
Name	Degrees Decimal Minutes	Travel Time From Fire		Phone	Helipad		Level of Care
Lake Chelan Health 110 S. Apple Blossom Drive Chelan WA	Lat: 47° 50' 20 N	30 Min	3 Hr	509-683-2474	X		Level IV Trauma
	Long: 119° 59' 20 W						
Central Washington Hospital 1201 S. Miller Wenatchee WA	Lat: 47° 24. 43 N	1 Hr	4 Hr	509-433-3115	X		Level II Trauma
	Long: 120° 19. 28 W						
Harborview Medical Center 325 9 th Ave Seattle WA	Lat: 47° 36. 24 N	1.5 Hr	6 Hr	206-744-4025	X		Level I Trauma Burn Center
	Long: 122° 19. 45 W						
ICP	EMS Responders & Capability:		James Brown MEDL/Paramedic		360-775-5413		
			Mariann Turley MEDL/AEMT		509-496-9370		
	Equipment Available on Scene:		ALS Kit, AED, O2, OTC meds				
	Medical Emergency Channel:		Command 7,8,9,10,11 (Linked)				
	ETA for Ambulance to Scene:						
	Air:		NA				
	Ground:		15 Min				
Approved Heli-Spot:		NA					
Lat:		NA					
Long:		NA					
LUCERNE FOB	EMS Responders & Capability:		Ben Meacham MEDL/EMTF		360-921-3817		
			MEDIC 6 Steve Medina (Boat Medical)		360-556-9568		
			EMT 1 Ivan Huld (Boat Medical)		360-888-9880		
	Equipment Available on Scene:		ALS Kit, AED, O2, OTC meds				
	Medical Emergency Channel:		Command 7,8,9,10,11 (Linked)				
	ETA for Ambulance to Scene:						
	Air:		2 hr				
Water/Ground:		3 hr					
Approved Heli-Spot:							
Lat:		H5 48° 12.1624' N					
Long:		120° 35.4476' W					
BRANCH I	EMS Responders & Capability:		MEDIC 1 Remington Becker (DP 30)		360-903-8612		
			MEDIC 3 Adam Lathrop (DP 22)		425-531-0469		
			EMT 2 Aidan Noel (DP 22)		206-458-0103		
			EMT 3 James Franklin (DP 26)		253-312-1374		
			REMS 2 Brayden Kirk + 3 (DIV D)		509-264-8203		
			Kevin Smith MEDL/EMPF (Stehekin FOB)		509-710-0239		
	Equipment Available on Scene:		ALS Kit, Monitor/Defib, O2				
	Medical Emergency Channel:		Command 7,8,9,10 (Linked)				
	ETA for Ambulance to Scene:						
	Air:		2 hr				
Water/Ground:		3 hr					
Approved Heli-Spots:							
H1 48° 10.813' N		H11 48° 14.492' N		H15 48° 08.754' N			
120° 31.925' W		120° 35.922' W		120° 29.813' W			
H10 48° 14.099' N		H12 48° 13.381' N		H16 48° 07.744' N			
120° 36.782' W		120° 35.919' W		120° 29.541' W			
Lat:		NA					
Long:		NA					

MEDICAL PLAN (206 WF)

BRANCH V	EMS Responders & Capability:	MEDIC 2 Joel Bower (CONTINGENCY) 360-461-7390 MEDIC 5 Brian Linacre (CONTINGENCY) 301-781-7990 REMS 1 Ray Storm +4 (DIV S) 415 637-0491 MEDIC 4 Nathan Etherington (DIV S) 360-969-1251
	Equipment Available on Scene:	ALS Kit, Monitor/Defib, O2, Rescue Gear
	Medical Emergency Channel:	Command 7,8,9,10,11 (Linked)
	ETA for Ambulance to Scene:	
	Air:	2 hr
	Ground:	3 hr
	Approved Heli-Spot:	NA
	Lat:	H25 47° 59.200' N
	Long:	120° 16. 521' W
TBD	EMS Responders & Capability:	TBD
	Equipment Available on Scene:	
	Medical Emergency Channel:	Command 7,8,9,10,11 (Linked)
	ETA for Ambulance to Scene:	
	Air:	2 hr
	Ground:	3 hr
	Approved Heli-Spot:	NA
	Lat:	NA
	Long:	NA
TBD	EMS Responders & Capability:	TBD
	Equipment Available on Scene:	
	Medical Emergency Channel:	Command 7,8,9,10,11 (Linked)
	ETA for Ambulance to Scene:	
	Air:	2 hr
	Ground:	3 hr
	Approved Heli-Spot:	NA
	Lat:	NA
	Long:	NA
TBD	EMS Responders & Capability:	TBD
	Equipment Available on Scene:	
	Medical Emergency Channel:	Command 7,8,9,10,11 (Linked)
	ETA for Ambulance to Scene:	
	Air:	
	Ground:	
	Approved Heli-Spot:	NA
	Lat:	NA
	Long:	NA
TBD	EMS Responders & Capability:	TBD
	Equipment Available on Scene:	
	Medical Emergency Channel:	Command 7,8,9,10,11 (Linked)
	ETA for Ambulance to Scene:	
	Air:	
	Ground:	
	Approved Heli-Spot:	NA
	Lat:	NA
	Long:	NA

Prepared By (Medical Unit Leader)	Date	Reviewed By (Safety Officer)	Date
Mariann Turley MEDL	06/25/24	Matt Broyles SOFC	06/25/24
Signature: <i>Mariann Turley</i>		Signature: <i>Matt Broyles</i>	

MEDICAL PLAN (ICS 206 WF)

Controlled Unclassified Information//Basic

Medical Incident Report

FOR A NON-EMERGENCY INCIDENT, WORK THROUGH CHAIN OF COMMAND TO REPORT AND TRANSPORT INJURED PERSONNEL AS NECESSARY.

FOR A MEDICAL EMERGENCY: IDENTIFY ON SCENE INCIDENT COMMANDER BY NAME AND POSITION AND ANNOUNCE "MEDICAL EMERGENCY" TO INITIATE RESPONSE FROM IMT COMMUNICATIONS/DISPATCH.

Use the following items to communicate situation to communications/dispatch.

1. CONTACT COMMUNICATIONS / DISPATCH (Verify correct frequency prior to starting report)

Ex: "Communications, Div. Alpha. Stand-by for Emergency Traffic."

2. INCIDENT STATUS: Provide incident summary (including number of patients) and command structure.

Ex: "Communications, I have a Red priority patient, unconscious, struck by a falling tree. Requesting air ambulance to Forest Road 1 at (Lat./Long.) This will be the Trout Meadow Medical, IC is TFLD Jones. EMT Smith is providing medical care."

Severity of Emergency / Transport Priority	<input type="checkbox"/> RED / PRIORITY 1 Life or limb threatening injury or illness. Evacuation need is IMMEDIATE <i>Ex: Unconscious, difficulty breathing, bleeding severely, 2° - 3° burns more than 4 palm sizes, heat stroke, disoriented.</i> <input type="checkbox"/> YELLOW / PRIORITY 2 Serious injury or illness. Evacuation may be DELAYED if necessary. <i>Ex: Significant trauma, unable to walk, 2° - 3° burns not more than 1-3 palm sizes.</i> <input type="checkbox"/> GREEN / PRIORITY 3 Minor injury or illness. Non-Emergency transport <i>Ex: Sprains, strains, minor heat-related illness.</i>	
Nature of Injury or Illness & Mechanism of Injury		<i>Brief Summary of Injury or Illness (Ex: Unconscious, Struck by Falling Tree)</i>
Transport Request		<i>Air Ambulance / Short Haul/Hoist Ground Ambulance / Other</i>
Patient Location		<i>Descriptive Location & Lat. / Long. (WGS84)</i>
Incident Name		<i>Geographic Name + "Medical" (Ex: Trout Meadow Medical)</i>
On-Scene Incident Commander		<i>Name of on-scene IC of Incident within an Incident (Ex: TFLD Jones)</i>
Patient Care		<i>Name of Care Provider (Ex: EMT Smith)</i>

3. INITIAL PATIENT ASSESSMENT: Complete this section for each patient as applicable (start with the most severe patient)

Patient Assessment: See IRPG page 106

Treatment:

4. TRANSPORT PLAN:

Evacuation Location (if different): (Descriptive Location (drop point, intersection, etc.) or Lat. / Long.) Patient's ETA to Evacuation Location:

Helispot / Extraction Site Size and Hazards:

5. ADDITIONAL RESOURCES / EQUIPMENT NEEDS:

Example: Paramedic/EMT, Crews, Immobilization Devices, AED, Oxygen, Trauma Bag, IV/Fluid(s), Splints, Rope rescue, Wheeled litter, HAZMAT, Extrication

6. COMMUNICATIONS: Identify State Air/Ground EMS Frequencies and Hospital Contacts as applicable

Function	Channel Name/Number	Receive (RX)	Tone/NAC *	Transmit (TX)	Tone/NAC *
COMMAND					
AIR-TO-GRND					
TACTICAL					

7. CONTINGENCY: Considerations: If primary options fail, what actions can be implemented in conjunction with primary evacuation method? Be thinking ahead.

8. ADDITIONAL INFORMATION: Updates/Changes, etc.

REMEMBER: Confirm ETA's of resources ordered. Act according to your level of training. Be Alert. Keep Calm. Think Clearly. Act Decisively.