

THURSDAY



JUNE 27, 2024

OPERATION PERIOD

Day: 0700 - 2100

COMMUNICATIONS 24-HOUR  
EMERGENCY NUMBER

(208) 891-7948

PIONEER CHARGE CODES

USFS: PN RZ79 (1522)

DOI: RZ79

WA DNR: 221-LDW



Maps, IAP,  
Finance / Eval.



# PIONEER

## INCIDENT ACTION PLAN

Pioneer

WA-SES-000173



Notes


	Ground	Air
FS:		
DNR:		
OSC:		
FSAA:		
DNR AA:		

<b>INCIDENT OBJECTIVES</b>	1. Incident Name <b>PIONEER</b>	2. Date Prepared <b>06/26/2024</b>	3. Time <b>1900</b>
4. Operational Period <b>Day Operations: 0700-2100</b>			
<p><b>Strategic Framework:</b> The Pioneer Fire is a full suppression fire utilizing strategies and tactics that provide the highest likelihood of success while mitigating risks to the responders and public. Extreme terrain prevents direct attack. Indirect lines are being identified and established that reduces risk to responders while protecting identified values including private and federal infrastructure and recreational values.</p> <p><b>Management Objectives:</b></p> <ul style="list-style-type: none"> <li>• Ensure the safety and well-being of responders and the public by making timely risk-informed decisions that align with values at risk.</li> <li>• Protect private and federal infrastructure and recreational values.</li> <li>• Foster relationships with local cooperators and the public by providing coordinated, accurate, and timely information.</li> <li>• Coordinate suppression activities with READ's to identify and mitigate current and future impacts to the landscape and resources.</li> <li>• Treat each other with dignity and respect and act in a professional manner on the fire and in the communities.</li> <li>• Manage cost commensurate with values at risk by coordinating with the Agency Administrators and Incident Business Advisors.</li> </ul> <p><b>Operational Objectives:</b></p> <ul style="list-style-type: none"> <li>• Implement an effective suppression strategy utilizing direct attack where and when appropriate to protect values at risk. When fire behavior, terrain, or safety concerns prohibit direct attack, utilize other suppression tactics such as indirect and point protection as appropriate to reduce risk to responders. Take advantage of natural features such as breaks in fuels, topographic features, or changes in weather.</li> <li>• Establish indirect control lines with the highest probability of success which prevent fire spread into populated areas.</li> <li>• Communicate with local law enforcement officials to ensure current and potential evacuations are coordinated.</li> </ul>			
6. Weather Forecast for Period			
7. General Safety Message			
8. Attachments (mark if attached)			
X	Organization List- ICS 203	X	Medical 206WF - 8 Line
X	Div. Assignment Lists - ICS 204	X	Finance Message
X	Communications Plan - ICS 205	X	Dutch Creek Protocol
X	Medical Plan - ICS 206	X	LCES - ICS 215A
X	Air Operation Summary - ICS 220	X	Weather Forecast
X		X	Incident Map(s)
		X	Unit Log
Prepared by Planning Section Chief <i>Mike Crawford</i>		Approved by Incident Commander <i>Nathan Letwin</i>	

ORGANIZATION ASSIGNMENT LIST	
1. Incident Name <b>PIONEER</b>	
2. Date Prepared <b>JUNE 26, 2024</b>	3. Time Prepared <b>1800</b>
4. Operational Period <b>JUNE 27, 2024 0700 – 2100</b>	
5. Incident Commander and Staff	
Position	Name
Incident Commander	Nate Lefevre
Incident Commander (T)	Steve North
Deputy	Chris Orr
Safety Officer	Matt Broyles / Eric Brown
Information Officer	Liv Stecker
Liaison	Shawn Christianson / Greg Brody (Stehekin) / Mark Suba / Rhonda Marchand (T)
Human Resources	Margaret Dietrich
6. Agency Representatives	
Agency	Name
USFS Oka/Wen Agency Admin	Kari Grover-Wier
USFS Oka/Wen Agency Admin (T)	Paul Willard
DNR Agency Administrator	Larry Leach
DNR Deputy Agency Administrator	Wyatt Leighton
NPS Agency Administrator	Don Striker
NPS Agency Representative	John Goss
NPS FMO	Matt Ellis
READ Liaison	Courtney Rowe
7. Planning Section	
Plans Section Chief	Mike Crawford
Deputy	Debbie Plummer (T)
Resource Unit	Gary Duranceau/ Cari Richardson
Status Check-in	Katelyn Roeder / Charlie Hardy
Situation Unit	Shannon Theall / Ray Moeckel (T)
GIS Specialists	Aleksandar Dozik / Olivia Hughes (T)
Demob Unit	Jay Lord
Documentation Unit	Chris Oelschlager
Incident Meteorologist	Todd Carter
Fire Behavior Analyst	Steve Ziel
Long Term Fire Analyst	Brett Smith (Virtual)
8. Logistics Section	
Logistics Section Chief	Franklin Vaughan / Larry Falcon (T)
Deputy	Max Yager (Stehekin) / Cindy Wedekind (Lucerne)
Facilities	Jan Robbins / Kelsy Lipp / Peter Drott (T) / Mike Prevost (T) / Randy Rector (T)

Base Camp Manager	Dave Lefevre/Mac McEntyre (T)	
Supply Unit	Vicki Cunningham	
IT Specialist	Mike Gascon / Chad Funnemark / Ben Smith (T)	
Receiving Distribution	Michael Hanson / Karl Peterson (T) / David Richards (Stehekin)	
Ordering Manager	Noe Reyes	
Ground Support Unit	Casey Glade / Joe Keady	
Communication Unit	Seth Baumgartner / Michael Merrick (T)	
Communication Tech.	Keith Schaff / Kevin Judd	
Food Unit	Kristy Naughton John Cody/Phil Moller/Shawna Monroe (T)	
Security Manager	Michael Fakier	
Medical Unit	Mariann Turley / James Brown / Kevin Smith (T) (Stehekin) / Ben Meacham	
9. Operations Section		
OPS Section Chief - Lead	Jon Larson / Jesse Kiene (T)	
OPS Section Chief - Planning	Rob Poyner (T)	
OPS Section Chief – Field	Seth Merritt	
a. Branch I		
Branch Director	Thom Taylor	
Division	A	Seth Missal / James Fields (T)
Division	Z	Travis Baker/Frank Heilman (T)
b. Branch II		
Branch Director	Thom Taylor	
Division	D	Ben Lippert / Silas Baffa (T)
c. Branch IV		
Branch Director	Roger Goldman	
Division	H	
c. Branch V		
Branch Director	Alfred Wiehl	
Division	S	Linda Gibson / Holt Jaeger (T)
Division	Contingency / Roads	Jennifer Harris/Eric Metzger (T)
Division	Boat	Nate Crawford
Division	Staging	Jon Merager
d. Air Operations Branch		
AOB Director – Planning	Mark Hocken	
AOB Director – Field	Ted Hass	
10. Finance Section		
Finance Section Chief	Patty Westgate / Lori Bailey (T)	
Time Unit	Beverly Hollars / Heather Wall	
Procurement	Audrey Mainwaring	
Comp/Claims	Kelly Lorenz (Virtual)	
Cost Unit	Dede Domingos	
Prepared by Cari Richardson, RESL		



# Fire Weather Forecast



**FORECAST NO:** 15

**INCIDENT:** Pioneer Fire

**PREDICTION FOR:** 24 Hr Shift

**SHIFT DATE:** Thursday 6/27/2024

**SIGNED:** Todd Carter

**TIME AND DATE ISSUED:** 6/26/2024 1900 hrs

Incident Meteorologist (IMET)

**Discussion:** A low pressure system will be over the Pacific Northwest today causing cooler temperatures, higher humidity and gusty northwest winds. A few showers could move through the region, but the threat of lightning is very low. A ridge will quickly build back over the region on Friday into Saturday.

**WEATHER FORECAST FOR TODAY:**

**SKY/WEATHER:** Partly cloudy becoming mostly cloudy in the afternoon. 40% chance of showers. 8% chance of thunderstorms in the afternoon.

**MAX TEMPERATURE:** 64 to 69.

**MIN RH:** 38 to 43 percent.

**20 FT WINDS:**

**Lower Valleys:** Northwest 5 to 10 mph gusts to 15 mph increasing to 8 to 13 mph gusts to 25 mph in the afternoon.

**Mid-slopes and Ridges:** Northwest 5 to 10 mph gusts to 20 mph increasing to 10 to 15 gusts to 35 mph in the afternoon.

**HAINES INDEX:** 2 Very Low: Stability-1 & Moisture-1

**TRANSPORT WINDS:** NW 20 mph.

**INVERSION:** 1000 ft inversion starting to lift at 0700 with a max of 5000 ft by 1300.

**TONIGHT:**

**SKY/WEATHER:** Mostly cloudy becoming partly cloudy after midnight. 20% chance of showers in the evening.

**MIN TEMPERATURE:** 51 to 56.

**MAX RH:** 60 to 65 percent.

**20 FT Wind**

**Valleys/Lower Slopes:** Northwest 8 to 13 mph gusts to 25 decreasing to 5 to 10 mph gusts to 15 mph after midnight.

**Mid-Slopes and Ridges:** Northwest 10 to 15 mph gusts to 35 mph decreasing 5 to 10 mph gusts to 20 mph after midnight.

**INVERSION:** Developing after 2100 hrs near 1000 ft.

**FRIDAY:**

**SKY/WEATHER:** Partly cloudy becoming mostly cloudy in the afternoon.

**MAX TEMPERATURE:** High 74 to 79.

**MIN RH:** 28 to 33 percent.

**20 FT WINDS:**

**Lower Valleys:** Northwest 5 to 10 mph gusts to 15 mph becoming southeast 5 to 10 mph in the afternoon.

**Mid-slopes and Ridges:** Northwest 5 to 10 mph gusts to 20 mph becoming southeast 5 to 10 gusts to 15 mph in the afternoon.

**HAINES INDEX:** 2 Very Low.

**TRANSPORT WINDS:** SE 9 mph.

**Change your weather information Contact INFO:**

Weather observations can now be texted to 509-319-0474 or emailed to [todd.carter@noaa.gov](mailto:todd.carter@noaa.gov)

## Fire Behavior Forecast # 16

<b>Name of Incident:</b> <b>Pioneer</b>	<b>Administrative Unit:</b> SE Region DNR / Okanogan-Wenatchee NF
<b>Date &amp; Time Issued:</b> June 26, 2024 @ 2000	<b>Operational Period:</b> <u>DAY</u> 06/27/2024
<b>FBAN:</b> Steve Ziel	<b>Signed:</b> /z/

**Assumptions:** *Yesterdays brief precipitation resulted in wetted surface fuels across the fire area. Current fuel conditions will not support fire spread until sufficient drying occurs. Potential fire behavior is being inhibited by fuel condition and discontinuity. Expect minimal/limited burning conditions between 1300-1700 in exposed fine fuels. Persistent burning and heat retention in heavy fuels will serve as ignition sources as drying occurs. Live fuels are not contributing to fire spread (yet). Lake effect winds (up or down lake) dominate lower and mid slopes; the fire areas is on a SW aspect with steep side drainages that provide upslope winds. Wind/slope alignment and/or lake wind will influence drying rate and fire spread. Fine fuels will dry rapidly with lower humidity.*

### Weather Summary

\*See attached Fire Weather Forecast

### Fire Behavior Summary

**Fuels in the fire area** are composed of a mosaic of **Timber Litter, Grass, Timber with Understory, and Grass/Shrub** models. The fire is burning in the Rex Creek (2001) fire footprint. Primary tree species include mixed sizes and densities of Douglas Fir and Ponderosa Pine. Local timber litter is compact to fluffy. Brush and understory species include ceanothus, hardwoods, and dog-hair conifer reproduction. Large snags and heavy downed fuel loadings are common throughout all areas. Live woody and herbaceous fuels are seasonally moist, and not contributing to rates of spread; grasses are partially to fully cured. Fuel conditions change by aspect, previous fire history, and soil moisture. Low crown base height (ladder fuels) is present in most of the timbered areas.

**Today's potential fire behavior** may include pockets/areas of smoldering, creeping, and limited spread with wind/slope alignment. Primary spread mechanism has been backing with rollout, flanking, and limited head fire spread. Heavy fuels are retaining heat and will serve as ignition sources as fine fuels dry from wind and low RH during the burn period. Early season fuel condition is inhibiting full fire behavior potential – live fuels are moist, some grasses are still curing. It is important to assess moisture penetration in surface fuels (scuff test) to determine rate of drying. Canopy protected sheltered fuels may produce some open flame.

\* **FFM= 7%-9%, 1000hr. moisture=12%, Woody fuels 170%, Probability of Ignition-30-50%, Max Spotting < 0.2**

Fuel Type	Rate of Spread	Flame Length	Backing ROS	35 MPH Gust – Ridgetop
...If your work area includes -	(CH/HR = FPM)	Feet	FPM	FPM
GR2 - Moderate load grass/shrub	2 - 3	<2	< 1	2 - 3
SH2 – Moderate load shrub	1 - 2	2	< 1	5-7
TU5 - High load Timber w/ Understory	8 - 9	6-7	< 1	20-25
TL8 – Long needle timber litter	8 - 9	3-4	< 1	20-25

### Specific Assignments:

**Div. A** – Expect smoldering, creeping, and limited flanking in headwaters of Meadow Cr. And Cascade Cr.. Assess fuel conditions.

**Div. Z** –Ragged edge fire edge on north side of Prince Cr will continue to smolder, flank, and back with rollout.

**Other Divisions** – Should not be affected by fire activity during the burn period. Monitor smoke direction and amount. Assess fuels.

\***IA** – Ensure good size-up before engaging. Assess fire spread potential based on fuel, weather, topography and values at risk.

**Air Operations:** NW ridgetop wind gusts to 35 mph by afternoon. Monitor ridge top wind transitions, and lake winds to 25 mph.

### Safety

Varying amounts of moisture in the fire area, some fuels were sheltered from moisture. Drying rates may accelerate with wind, aspect, shading, and warming. Fuels that have consumed leave hot ash pits. Fire weakened snags and trees are not to be trusted.....maintain situational awareness of your surroundings at all times – monitor drying rates in your work area (shaded vs. exposed fuels).

FINE FUELS are VERY responsive to the effects of temperature and humidity...monitor your conditions. Anticipate current conditions to continue for the next several days.....anticipate fire behavior before you observe it, anticipate your actions before need to act. **Remember :** *fine fuels + wind = rapid rate of spread ; timber litter + wind = high intensity fire with torching and spotting; moss + ladder fuels= torching and spotting.*

*\*Todays Fire Behavior Forecast contains 720 words written for your situational awareness.*

<b>DIVISION ASSIGNMENT LIST</b>		1. Branch <b>I</b>	2. Division / Group <b>A</b>				
3. Incident Name <b>Pioneer</b>		4. Operational Period Date: <b>06/27/2024</b> Time: <b>0700-2100</b>					
5. Operations Personnel							
Operations Chief	Jon Larson / Jesse Kiene (T)		Division / Group Supervisor	Seth Missal / James Fields (T)			
Operations Chief (Plans)	Rob Poyner (T)		Branch Director	Thom Taylor			
Safety Officer	Matt Broyles / Eric Brown		Air Attack Supervisor	Chad Bergren			
6. Resources Assigned this Period							
	Strike Team / Task Force / Resource Designator	Leader	Number Persons	Tentative Last Work Day	Drop Off Pt / Time	Pick Up Pt / Time	
1.	<b>O-179 TFLD</b>	<b>Charlie Humbert</b>	<b>1</b>	<b>7/9</b>			
2.	<b>O-180 TFLD</b>	<b>Joe Landburg</b>	<b>1</b>	<b>7/10</b>			
3.							
4.	<b>C-8 CRW1 Union IHC</b>	<b>Eric Jorgenson</b>	<b>25</b>	<b>6/27</b>			
5.	<b>C-9 CRW1 Zigzag IHC</b>	<b>Sandra Sperry</b>	<b>25</b>	<b>6/28</b>			
6.	<b>**C-13 CRW1 Vale IHC</b>	<b>Glen Heitz</b>	<b>20</b>	<b>7/4</b>			
7.	<b>O-187 WFM1 Grass Lake</b>	<b>William Johnson</b>	<b>9</b>	<b>7/7</b>			
8.							
9.	<b>O-67 MEDIC 3</b>	<b>Adam Lathrop</b>	<b>1</b>	<b>7/4</b>			
10.	<b>O-137 EMT 3</b>	<b>James Franklin</b>	<b>1</b>	<b>7/1</b>			
11.	<b>O-153 EMT 2</b>	<b>Aiden Noel</b>	<b>1</b>	<b>7/1</b>			
12.							
13.	<b>O-175 SOFR</b>	<b>Melissa Moore</b>	<b>1</b>	<b>7/4</b>			
14.	<b>O-174.52 SOFR</b>	<b>George Libercajt</b>	<b>1</b>	<b>7/7</b>			
15.							
16.							
17.							
18.							
19.							
7. Control Operations <b>Task: Contain fire spread to the northwest where terrain and fuels allow for highest probability of success. Assess fire perimeter progression to the north and west at higher elevations. Implement point protection efforts on federal &amp; private infrastructure.</b>  <b>Purpose: To slow fire progression, provide time for suppression tactics, and continue to prep around critical values.</b>  <b>End state: Minimize fire impacts to critical values including private inholdings and Forest Service infrastructure.</b>							
8. Special Instructions <ul style="list-style-type: none"> <li>In large or long term spike camps use helicopters, boats, or pack stock to deliver portable backcountry latrines and remove human waste if necessary. If camp does not have adequate pack, boat, or air support for human waste management, establish community latrines well away from water sources and common areas. Use human waste bags, if necessary.</li> <li>Minimize ground disturbance on the Moore Point and Meadow Creek alluvial fans in order to protect sensitive resources.</li> <li>Ensure hazard mitigations and IWI protocols are in place before taking action.</li> <li>** Denotes available for Initial Attack</li> </ul>							
9. Division / Group Communication Summary							
Function	Frequency	System	Channel	Function	Frequency	System	Channel
Command Repeater	See Comm Plan			Command	See Comm. Plan		
TAC				Air To Ground	See Comm. Plan		
Prepared by (Resource Unit Leader): Name: Gary Duranceau			Approved by (Planning Section Chief) Name: Mike Crawford		Date 6/26/24	Time 1900	

<b>DIVISION ASSIGNMENT LIST</b>		1. Branch <b>I</b>	2. Division / Group <b>Z</b>				
3. Incident Name <b>Pioneer</b>		4. Operational Period Date: <b>06/27/2024</b> Time: <b>0700-2100</b>					
5. Operations Personnel							
Operations Chief	Jon Larson / Jesse Kiene (T)		Division / Group Supervisor	Travis Baker / Frank Heilman (T)			
Operations Chief (Plans)	Rob Poyner (T)		Branch Director	Thom Taylor			
Safety Officer	Matt Broyles / Eric Brown		Air Attack Supervisor	Chad Bergren			
6. Resources Assigned this Period							
	Strike Team / Task Force / Resource Designator	Leader	Number Persons	Tentative Last Work Day	Drop Off Pt / Time	Pick Up Pt / Time	
1.	<b>O-177 TFLD</b>	<b>Brett Matthews</b>	<b>1</b>	<b>7/10</b>			
2.							
3.	<b>O-182 WFM1 Selway</b>	<b>JT Sohr</b>	<b>14</b>	<b>7/8</b>			
4.							
5.	<b>A-23 Boise Helitack</b>	<b>Jean Luke Ankney</b>	<b>3</b>	<b>7/6</b>			
6.							
7.	<b>A-78 UR-31</b>	<b>Marshal Wallace</b>	<b>2</b>	<b>7/9</b>			
8.							
9.	<b>O-51 MEDIC 1</b>	<b>Remington Becker</b>	<b>1</b>	<b>7/3</b>			
10.							
11.	<b>O-174.52 SOFR</b>	<b>George Libercajt</b>	<b>1</b>	<b>7/7</b>			
12.	<b>O-189 SOF2</b>	<b>John Nickey</b>	<b>1</b>	<b>7/1</b>			
13.							
14.							
15.							
16.							
17.							
7. Control Operations							
<b>Task:</b> Contain fire spread to the southeast where terrain and fuels allow for high probability of success. Assess fire perimeter progression to the east/southeast at higher elevations.							
<b>Purpose:</b> To slow fire progression, provide time for suppression tactics, and continue to prep around critical values.							
<b>End state:</b> Minimize fire impacts to critical values including private inholdings and Forest Service infrastructure							
<ul style="list-style-type: none"> <li>In large or long term spike camps use helicopters, boats, or pack stock to deliver portable backcountry latrines and remove human waste if necessary. If camp does not have adequate pack, boat, or air support for human waste management, establish community latrines well away from water sources and common areas. Use human waste bags, if necessary.</li> <li>Ensure hazard mitigations and IWI protocols are in place before taking action.</li> </ul>							
8. Division / Group Communication Summary							
Function	Frequency	System	Channel	Function	Frequency	System	Channel
Command Repeater	See Comm Plan			Command	See Comm. Plan		
TAC				Air To Ground	See Comm. Plan		
Prepared by (Resource Unit Leader): Name: Gary Duranceau			Approved by (Planning Section Chief) Name: Mike Crawford		Date	6/26/24	Time 1900

<b>DIVISION ASSIGNMENT LIST</b>			1. Branch <b>II</b>		2. Division / Group <b>D</b>			<b>Page 1 of 2</b>		
3. Incident Name <b>Pioneer</b>			4. Operational Period Date: <b>06/27/2024</b> Time: <b>0700-2100</b>							
5. Operations Personnel										
Operations Chief		Jon Larson / Jesse Kiene (T)			Division / Group Supervisor		Ben Lippert / Silas Baffa (T)			
Operations Chief (Plans)		Rob Poyner (T)			Branch Director		Thom Taylor			
Safety Officer		Matt Broyles / Eric Brown			Air Attack Supervisor		Chad Bergren			
6. Resources Assigned this Period										
Strike Team / Task Force / Resource Designator		Leader		Number Persons	Tentative Last Work Day	Drop Off Pt / Time		Pick Up Pt / Time		
1.	O-183 TFLD		Harley Hamman		1	7/6	Stehekin		Stehekin	
2.	O-251 TFLD		Aaron Meritt		1	7/10	Stehekin		Stehekin	
3.										
4.	O-122 HECM		Nick DePanlo		4	7/1	Stehekin		Stehekin	
5.										
6.	O-147 SMOD LNP CREW 76		Sara Martinez		7	7/3	Stehekin		Stehekin	
7.	O-148 SMOD HVP CREW 1		Brent Webb		10	7/3	Stehekin		Stehekin	
8.	O-278 SMOD Crew 84		Geoff Hibbs		3	7/10	Stehekin		Stehekin	
9.	**O-218 WFM2 Olympic		Jonah Gray		10	7/6	Stehekin		Stehekin	
10.										
11.	O-184 FELB		Marty Cozart		1	7/6	Stehekin		Stehekin	
12.	O-186 FMOD Kintner Timber		Cory Kintner		2	7/6	Stehekin		Stehekin	
13.	O-185 FMOD Brothers Fire		Levi Merritt		2	7/6	Stehekin		Stehekin	
14.										
15.	O-125 READ		Cedar Drake		1	7/6	Stehekin		Stehekin	
16.	O-166 REAF		Jordan Spaak		1	7/6	Stehekin		Stehekin	
17.	O-235 REAF		Cade Simpson		1	7/7	Stehekin		Stehekin	
18.	O-167 ARCH		Jason Wright		1	7/5	Stehekin		Stehekin	
19.	O-168 ARCH		Ernest Wingate		1	7/6	Stehekin		Stehekin	
7. Control Operations										
<b>Task:</b> Continue construction of contingency lines around the community of Stehekin. Look for opportunities to contain fire spread in and around Flick Creek area where terrain and fuels allow for highest probability of success.										
<b>Purpose:</b> Minimize fire impacts to critical values including private inholdings, the community of Stehekin, and Forest Service infrastructure.										
<b>End state:</b> Critical values including private inholdings, the community of Stehekin, and Forest Service infrastructure are not impacted by the Pioneer fire, while minimizing fire impacts and acres burned utilizing historic wildfire control features and natural barriers.										
8. Special Instructions										
<ul style="list-style-type: none"> <li>In large or long term spike camps use helicopters, boats, or pack stock to deliver portable backcountry latrines and remove human waste if necessary. If camp does not have adequate pack, boat, or air support for human waste management, establish community latrines well away from water sources and common areas. Use human waste bags, if necessary.</li> <li>All operational personnel working on USFS lands will need to conduct a thorough inspection for invasive species seeds on boots including laces, clothing, and gear prior to entering NPS lands.</li> <li>Only fresh (direct from the cache) hose should be utilized on NPS lands to prevent the transport of invasive species seeds.</li> <li>Hose used on USFS lands should not be used on NPS lands and hose used on NPS lands should not be used on USFS lands to prevent the spread of invasives species seeds.</li> <li>Cargo loads being transported onto NPS lands should be inspected for invasive weed seed prior to flight.</li> <li>Ensure hazard mitigations and IWI protocols are in place before taking action.</li> <li>NPS Resource Avoidance Area Flagging is yellow with red polka dots. Contact NPS READs before working in areas where this flagging is present.</li> <li>** Denotes available for Initial Attack</li> </ul>										
9. Division / Group Communication Summary										
Function	Frequency	System		Channel	Function	Frequency	System		Channel	
Command Repeater	See Comm Plan				Command	See Comm. Plan				
TAC					Air To Ground	See Comm. Plan				
Prepared by (Resource Unit Leader): Name: Gary Duranceau				Approved by (Planning Section Chief) Name: Mike Crawford			Date 6/26/24		Time 1900	



<b>DIVISION ASSIGNMENT LIST</b>		1. Branch <b>II</b>	2. Division / Group <b>D</b>	<b>Page 2 of 2</b>			
3. Incident Name <b>Pioneer</b>		4. Operational Period Date: <b>06/27/2024</b> Time: <b>0700-2100</b>					
5. Operations Personnel							
Operations Chief	Jon Larson / Jesse Kiene (T)		Division / Group Supervisor	Ben Lippert / Silas Baffa (T)			
Operations Chief (Plans)	Rob Poyner (T)		Branch Director	Thom Taylor			
Safety Officer	Matt Broyles / Eric Brown		Air Attack Supervisor	Chad Bergren			
6. Resources Assigned this Period							
	Strike Team / Task Force / Resource Designator	Leader	Number Persons	Tentative Last Work Day	Drop Off Pt / Time	Pick Up Pt / Time	
20.	<b>O-165 REMS 2</b>	<b>Brayden Kirk</b>	<b>4</b>	<b>7/10</b>	<b>Stehekin</b>	<b>Stehekin</b>	
21.	<b>O-174.79 MEDL (T)</b>	<b>Kevin Smith</b>	<b>1</b>	<b>7/2</b>	<b>Stehekin</b>	<b>Stehekin</b>	
22.							
23.	<b>C-11 CRW1 Redmond IHC</b>	<b>Dave Varon</b>	<b>20</b>	<b>6/28</b>			
24.							
25.	<b>O-129 FELB</b>	<b>Mel Tenneson</b>	<b>1</b>	<b>7/1</b>			
26.	<b>O-127 FMOD Rainstorm</b>	<b>Kendall Cain</b>	<b>2</b>	<b>7/1</b>			
27.	<b>O-128 FMOD Rainstorm</b>	<b>Mike Lind</b>	<b>2</b>	<b>7/1</b>			
28.							
29.	<b>O-170 THSP</b>	<b>Tanya Neider</b>	<b>1</b>	<b>7/3</b>			
30.							
31.	<b>O-142 SOF2</b>	<b>Kelly Jensen</b>	<b>1</b>	<b>7/1</b>			
32.	<b>O-174.88 SOFR</b>	<b>Leo Engleson</b>	<b>1</b>	<b>7/7</b>			
33.							
34.	<b>E-119 Driver</b>	<b>Stephen Bouche</b>	<b>1</b>	<b>7/2</b>			
35.							
36.							
37.							
38.							
7. Control Operations							
<b>Task:</b> Continue construction of contingency lines around the community of Stehekin. Look for opportunities to contain fire spread in and around Flick Creek area where terrain and fuels allow for highest probability of success.							
<b>Purpose:</b> Minimize fire impacts to critical values including private inholdings, the community of Stehekin, and Forest Service infrastructure.							
<b>End state:</b> Critical values including private inholdings, the community of Stehekin, and Forest Service infrastructure are not impacted by the Pioneer fire, while minimizing fire impacts and acres burned utilizing historic wildfire control features and natural barriers.							
8. Special Instructions							
<ul style="list-style-type: none"> <li>In large or long term spike camps use helicopters, boats, or pack stock to deliver portable backcountry latrines and remove human waste if necessary. If camp does not have adequate pack, boat, or air support for human waste management, establish community latrines well away from water sources and common areas. Use human waste bags, if necessary.</li> <li>All operational personnel working on USFS lands will need to conduct a thorough inspection for invasive species seeds on boots including laces, clothing, and gear prior to entering NPS lands.</li> <li>Only fresh (direct from the cache) hose should be utilized on NPS lands to prevent the transport of invasive species seeds.</li> <li>Hose used on USFS lands should not be used on NPS lands and hose used on NPS lands should not be used on USFS lands to prevent the spread of invasives species seeds.</li> <li>Cargo loads being transported onto NPS lands should be inspected for invasive weed seed prior to flight.</li> <li>Ensure hazard mitigations and IWI protocols are in place before taking action.</li> <li>NPS Resource Avoidance Area Flagging is yellow with red polka dots. Contact NPS READs before working in areas where this flagging is present.</li> <li>** Denotes available for Initial Attack.</li> </ul>							
9. Division / Group Communication Summary							
Function	Frequency	System	Channel	Function	Frequency	System	Channel
Command Repeater	See Comm Plan			Command	See Comm. Plan		
TAC				Air To Ground	See Comm. Plan		
Prepared by (Resource Unit Leader): Name: Gary Duranceau			Approved by (Planning Section Chief) Name: Mike Crawford			Date 6/26/24	Time 1900

<b>DIVISION ASSIGNMENT LIST</b>		1. Branch <b>IV</b>	2. Division / Group <b>H</b>				
3. Incident Name <b>Pioneer</b>		4. Operational Period Date: <b>06/27/2024</b> Time: <b>0700-2100</b>					
5. Operations Personnel							
Operations Chief	Jon Larson / Jesse Kiene (T)		Division / Group Supervisor				
Operations Chief (Plans)	Rob Poyner (T)		Branch Director	Roger Goldman			
Safety Officer	Matt Broyles / Eric Brown		Air Attack Supervisor	Chad Bergren			
6. Resources Assigned this Period							
	Strike Team / Task Force / Resource Designator	Leader	Number Persons	Tentative Last Work Day	Drop Off Pt / Time	Pick Up Pt / Time	
1.							
2.							
3.							
4.							
5.							
6.							
7.							
8.							
9.							
10.							
11.							
12.							
13.							
14.							
15.							
16.							
17.							
18.							
19.							
20.							
21.							
22.							
23.							
24.							
7. Control Operations <b>Task:</b> Complete a comprehensive inventory of critical values, proposed control line options to protect those values and the risk to responders associated with those actions in SA4. <b>Purpose:</b> To analyze the strategy as probability vs success. <b>End state:</b> A long term durable strategic plan for the Pioneer Fire.							
8. Special Instructions							
<ul style="list-style-type: none"> <li>• In large or long term spike camps use helicopters, boats, or pack stock to deliver portable backcountry latrines and remove human waste if necessary. If camp does not have adequate pack, boat, or air support for human waste management, establish community latrines well away from water sources and common areas. Use human waste bags, if necessary.</li> <li>• Ensure hazard mitigations and IWI protocols are in place before taking action.</li> </ul>							
9. Division / Group Communication Summary							
Function	Frequency	System	Channel	Function	Frequency	System	Channel
Command Repeater	See Comm Plan			Command	See Comm. Plan		
TAC				Air To Ground	See Comm. Plan		
Prepared by (Resource Unit Leader): Name: Gary Duranceau			Approved by (Planning Section Chief) Name: Mike Crawford		Date 6/26/24	Time 1900	

<b>DIVISION ASSIGNMENT LIST</b>			1. Branch <b>V</b>	2. Division / Group <b>S</b>	<b>Page 1 of 2</b>		
3. Incident Name <b>Pioneer</b>			4. Operational Period Date: <b>06/27/2024</b> Time: <b>0700-2100</b>				
5. Operations Personnel							
Operations Chief	Jon Larson / Jesse Kiene (T)		Division / Group Supervisor	Linda Gibson / Holt Jaeger (T)			
Operations Chief (Plans)	Rob Poyner (T)		Branch Director	Alfred Wiehl			
Safety Officer	Matt Broyles / Eric Brown		Air Attack Supervisor	Chad Bergren			
6. Resources Assigned this Period							
	Strike Team / Task Force / Resource Designator	Leader	Number Persons	Tentative Last Work Day	Drop Off Pt / Time	Pick Up Pt / Time	
1.	O-112 TFLD	David Ortlund	1	7/1	Camp 4 Spike	Camp 4 Spike	
2.	O-113 TFLD (T)	Gavin Young	1	7/1	Camp 4 Spike	Camp 4 Spike	
3.	O-110 TFLD	Shane Clifton	1	6/30	Safe Harbor	Safe Harbor	
4.	O-111 TFLD (T)	Lars Olson	1	6/30	Camp 4 Spike	Camp 4 Spike	
5.	O-115 HEQB	Garrett Hanson	1	6/30	Camp 4 Spike	Camp 4 Spike	
6.	O-117 HEQB (T)	Ian Fox	1	6/30	Camp 4 Spike	Camp 4 Spike	
7.	O-130 FELB	Rob Winkler	1	7/2	Camp 4 Spike	Camp 4 Spike	
8.	O-126 FMOD Fire Contracting Serv.	Ethan Wilson	2	7/1	Camp 4 Spike	Camp 4 Spike	
9.							
10.	**C-10 CR2I Methow Valley IA	Benjamin Boucher	23	6/29	Safe Harbor	Safe Harbor	
11.	**C-18 CR2I Colville	Jacob Morse	21	7/6	Camp 4 Spike	Camp 4 Spike	
12.							
13.	E-73 WTS1 Strand Tenders	Garret Strand	1	6/27	Camp 4 Spike	Camp 4 Spike	
14.	E-78 WTS2 King Hydroseeding	Don Warden	1	7/10	Camp 4 Spike	Camp 4 Spike	
15.							
16.	E-92 DZR3 Batchelor Excavation	Jay Batchelor	2	6/28	Camp 4 Spike	Camp 4 Spike	
17.	E-101 SKG2 NW Diesel Dudes	John Lotze	2	7/3	Camp 4 Spike	Camp 4 Spike	
18.	E-102 SKG2 Dukes Equipment	Justin Durston	2	7/1	ICP	ICP	
19.	E-103 MBM2 Marcon Timber	Dave Landes	2	7/1	ICP	ICP	
20.	E-104 MBM2 Havillah Logging	Albert Johnson	2	7/1	ICP	ICP	
21.	E-105 MBM2 Justin Pitts	Justin Pitts	2	7/1	ICP	ICP	
22.							
23.	E-118 ENG6 Little Pend Oreille	Thomas Boggs	3	7/1	Camp 4 Spike	Camp 4 Spike	
24.	E-118 HEQB	Dillon Bigler	1	7/1	Camp 4 Spike	Camp 4 Spike	
25.	E-118 HEQB (T)	Pedro Gomez	1	7/1	Camp 4 Spike	Camp 4 Spike	
7. Control Operations <b>Task:</b> Implementation of control from South Navaree CG to Lake Chelan. Increase ingress and egress to the fire area. <b>Purpose:</b> To establish a barrier to fire to the east of Safety Harbor Creek. <b>End state:</b> Control line anchored from South Navaree CG to Lake Chelan.							
8. Special Instructions Ensure hazard mitigations and IWI protocols are in place before taking action. ** Denotes available for Initial Attack							
9. Division / Group Communication Summary							
Function	Frequency	System	Channel	Function	Frequency	System	Channel
Command Repeater	See Comm Plan			Command	See Comm. Plan		
TAC				Air To Ground	See Comm. Plan		
Prepared by (Resource Unit Leader): Name: Gary Duranceau			Approved by (Planning Section Chief) Name: Mike Crawford			Date 6/26/24	Time 1900

<b>DIVISION ASSIGNMENT LIST</b>			1. Branch <b>V</b>	2. Division / Group <b>S</b>	<b>Page 2 of 2</b>		
3. Incident Name <b>Pioneer</b>			4. Operational Period Date: <b>06/27/2024</b> Time: <b>0700-2100</b>				
5. Operations Personnel							
Operations Chief		Jon Larson / Jesse Kiene (T)		Division / Group Supervisor		Linda Gibson / Holt Jaeger (T)	
Operations Chief (Plans)		Rob Poyner (T)		Branch Director		Alfred Wiehl	
Safety Officer		Matt Broyles / Eric Brown		Air Attack Supervisor		Chad Bergren	
6. Resources Assigned this Period							
	Strike Team / Task Force / Resource Designator	Leader	Number Persons	Tentative Last Work Day	Drop Off Pt / Time	Pick Up Pt / Time	
26.	<b>O-75 MEDIC 4</b>	<b>Nathan Etherington</b>	<b>1</b>	<b>6/28</b>	<b>Safe Harbor</b>	<b>Safe Harbor</b>	
27.	<b>O-43 REMS1</b>	<b>Ray Storm</b>	<b>5</b>	<b>7/8</b>	<b>Camp 4 Spike</b>	<b>Camp 4 Spike</b>	
28.							
29.	<b>O-141 SOFR</b>	<b>Kevin Pfister</b>	<b>1</b>	<b>7/2</b>	<b>Camp 4 Spike</b>	<b>Camp 4 Spike</b>	
30.							
31.	<b>E-18 UTV</b>						
32.	<b>E-93 UTV</b>						
33.	<b>E-94 UTV</b>						
34.	<b>E-148 UTV</b>						
35.	<b>E-149 UTV</b>						
36.							
37.							
38.							
39.							
40.							
41.							
42.							
43.							
44.							
45.							
46.							
47.							
48.							
49.							
50.							
7. Control Operations <b>Task:</b> Implementation of control from South Navaree CG to Lake Chelan. Increase ingress and egress to the fire area. <b>Purpose:</b> To establish a barrier to fire to the east of Safety Harbor Creek. <b>End state:</b> Control line anchored from South Navaree CG to Lake Chelan.							
8. Special Instructions Ensure hazard mitigations and IWI protocols are in place before taking action. <b>** Denotes available for Initial Attack</b>							
9. Division / Group Communication Summary							
Function	Frequency	System	Channel	Function	Frequency	System	Channel
Command Repeater	See Comm Plan			Command	See Comm. Plan		
TAC				Air To Ground	See Comm. Plan		
Prepared by (Resource Unit Leader): Name: Gary Duranceau			Approved by (Planning Section Chief) Name: Mike Crawford			Date 6/26/24	Time 1900

<b>DIVISION ASSIGNMENT LIST</b>		1. Branch <b>V</b>	2. Division / Group <b>Contingency/Roads</b>		<b>Page 1 of 2</b>		
3. Incident Name <b>Pioneer</b>		4. Operational Period Date: <b>06/27/2024</b> Time: <b>0700-2100</b>					
5. Operations Personnel							
Operations Chief	Jon Larson / Jesse Kiene (T)		Division / Group Supervisor	Jennifer Harris / Eric Metzger (T)			
Operations Chief (Plans)	Rob Poyner (T)		Branch Director	Alfred Wiehl			
Safety Officer	Matt Broyles / Eric Brown		Air Attack Supervisor	Chad Bergren			
6. Resources Assigned this Period							
	Strike Team / Task Force / Resource Designator	Leader	Number Persons	Tentative Last Work Day	Drop Off Pt / Time	Pick Up Pt / Time	
1.	O-83 TFLD	Mark Lewis	1	6/29			
2.	O-106 TFLD	Andy Hall	1	6/29			
3.	O-178 TFLD	Andrew Schaffran	1	7/9			
4.	O-239 TFLD	Kory Garrie	1	7/9			
5.	O-245 TFLD	Noah Daniels	1	7/10			
6.	O-114 TFLD (T)	TJ Whitehall	1	7/1			
7.	O-249 TFLD (T)	Mark Harper	1	7/9			
8.	O-257 TFLD (T)	Craig McDonald	1	7/9			
9.	O-241 HEQB	Jason Green	1	7/9			
10.	O-242 HEQB	Travis Parker	1	7/9			
11.	O-243 HEQB	Everardo Santillan	1	7/8			
12.	O-116 HEQB (T)	Tyler Meyer	1	6/30			
13.							
14.	**C-19 CR21 Cle Elum RD	Cris Machado	18	7/8			
15.							
16.	E-69 FTRA Morris Forestry	Jake Wilcox	1	7/7			
17.	E-71 GRD2 Pettet	Mark Rowe	2	6/27			
18.	E-72 GRD2 Scotts Excavating	Lucas Scott	2	7/7			
19.	E-74 WTS2 MVP Team	Joe Cole	1	6/30			
20.	E-75 WTS2 David Rains	Ron Laymance	1	6/30			
21.	E-83 WTS2 King Hydroseeding	Cosmo Fisher	1	6/28			
22.	E-76 WTS2 Mountain View Wildfire	Wick Fife	1	7/1			
23.	E-156 WTS2 King Hydroseeding	Wes Bodenhamer	1	7/8			
7. Control Operations <b>Task:</b> Scout proposed control lines at Oss Peak and Johnson Creek. Assess structures from Deer Point to Mitchel Creek. <b>Purpose:</b> To protect critical values at risk. <b>End state:</b> To have established control lines in place that correspond to Pioneer Fire strategic plan.							
8. Special Instructions Ensure hazard mitigations and IWI protocols are in place before taking action. ** Denotes available for Initial Attack							
9. Division / Group Communication Summary							
Function	Frequency	System	Channel	Function	Frequency	System	Channel
Command Repeater	See Comm Plan			Command	See Comm. Plan		
TAC				Air To Ground	See Comm. Plan		
Prepared by (Resource Unit Leader): Name: Gary Duranceau			Approved by (Planning Section Chief) Name: Mike Crawford		Date	Time	
					6/26/24	1900	

<b>DIVISION ASSIGNMENT LIST</b>		1. Branch <b>V</b>	2. Division / Group <b>Contingency/Roads</b>		<b>Page 2 of 2</b>		
3. Incident Name <b>Pioneer</b>		4. Operational Period Date: <b>06/27/2024</b> Time: <b>0700-2100</b>					
5. Operations Personnel							
Operations Chief	Jon Larson / Jesse Kiene (T)		Division / Group Supervisor	Jennifer Harris / Eric Metzger (T)			
Operations Chief (Plans)	Rob Poyner (T)		Branch Director	Alfred Wiehl			
Safety Officer	Matt Broyles / Eric Brown		Air Attack Supervisor	Chad Bergren			
6. Resources Assigned this Period							
	Strike Team / Task Force / Resource Designator	Leader	Number Persons	Tentative Last Work Day	Drop Off Pt / Time	Pick Up Pt / Time	
24.	<b>E-157 WTS2 Pine Mountain Exc.</b>	<b>Bob Goss</b>	<b>1</b>				
25.	<b>E-143 EXC2 Delange Enterprises</b>	<b>Pete Delange</b>	<b>2</b>	<b>7/5</b>			
26.	<b>E-100 DZR4 Douglas Logging</b>	<b>Steve Douglas</b>	<b>2</b>	<b>7/1</b>			
27.	<b>**E-117 ENG6 Wenatchee River</b>	<b>Nicholas Gonzales</b>	<b>5</b>	<b>7/3</b>			
28.							
29.	<b>O-68 MEDIC 2</b>	<b>Joel Bower</b>	<b>1</b>	<b>7/3</b>			
30.	<b>O-76 MEDIC 5</b>	<b>Brian Linacre</b>	<b>1</b>	<b>7/7</b>			
31.							
32.	<b>O-85 SOFR</b>	<b>Andy Murrin</b>	<b>1</b>	<b>6/27</b>			
33.							
34.	<b>E-19 UTV</b>						
35.	<b>E-44 UTV</b>						
36.							
37.							
38.							
39.							
40.							
41.							
42.							
43.							
44.							
45.							
46.							
7. Control Operations <b>Task:</b> Scout proposed control lines at Oss Peak and Johnson Creek. Assess structures from Deer Point to Mitchel Creek. <b>Purpose:</b> To protect critical values at risk. <b>End state:</b> To have established control lines in place that correspond to Pioneer Fire strategic plan.							
8. Special Instructions Ensure hazard mitigations and IWI protocols are in place before taking action. <b>** Denotes available for Initial Attack</b>							
9. Division / Group Communication Summary							
Function	Frequency	System	Channel	Function	Frequency	System	Channel
Command Repeater	See Comm Plan			Command	See Comm. Plan		
TAC				Air To Ground	See Comm. Plan		
Prepared by (Resource Unit Leader): Name: Gary Duranceau			Approved by (Planning Section Chief) Name: Mike Crawford		Date 6/26/24	Time 1900	

<b>DIVISION ASSIGNMENT LIST</b>		1. Branch <b>V</b>	2. Division / Group <b>Staging</b>				
3. Incident Name <b>Pioneer</b>		4. Operational Period Date: <b>06/27/2024</b> Time: <b>0700-2100</b>					
5. Operations Personnel							
Operations Chief	Jon Larson / Jesse Kiene (T)		Division / Group Supervisor	Jon Merager			
Operations Chief (Plans)	Rob Poyner (T)		Branch Director	Alfred Wiehl			
Safety Officer	Matt Broyles / Eric Brown		Air Attack Supervisor	Chad Bergren			
6. Resources Assigned this Period							
	Strike Team / Task Force / Resource Designator	Leader	Number Persons	Tentative Last Work Day	Drop Off Pt / Time	Pick Up Pt / Time	
1.	<b>E-151 MBM2 Dukes</b>	<b>Chris Boles</b>	<b>2</b>	<b>7/8</b>			
2.	<b>E-152 MBM2 Axsus</b>	<b>John Cisneros</b>	<b>2</b>	<b>7/10</b>			
3.	<b>E-153 FEL1 Dukes</b>	<b>Nick Marley</b>	<b>2</b>	<b>7/8</b>			
4.	<b>E-154 SKG2 Western</b>	<b>Rick Lauman</b>	<b>2</b>	<b>7/8</b>			
5.	<b>E-155 SKG2 Mountain View</b>	<b>Shawn Beaman</b>	<b>2</b>	<b>7/8</b>			
6.							
7.							
8.							
9.							
10.							
11.							
12.							
13.							
14.							
15.							
16.							
17.							
18.							
19.							
20.							
21.							
22.							
7. Control Operations <b>Task:</b> Remain ready and available for divisions as needed. <b>Purpose:</b> To assist divisions as needed to complete missions as appropriate. <b>End state:</b> Support suppression efforts as needed to project communities.							
8. Special Instructions							
9. Division / Group Communication Summary							
Function	Frequency	System	Channel	Function	Frequency	System	Channel
Command Repeater	See Comm Plan			Command	See Comm. Plan		
TAC				Air To Ground	See Comm. Plan		
Prepared by (Resource Unit Leader): Name: Gary Duranceau			Approved by (Planning Section Chief) Name: Mike Crawford			Date 6/26/24	Time 1900

<b>DIVISION ASSIGNMENT LIST</b>			1. Branch		2. Division / Group <b>BOAT</b>		
3. Incident Name <b>Pioneer</b>			4. Operational Period Date: <b>06/27/2024</b> Time: <b>0700-2100</b>				
5. Operations Personnel							
Operations Chief		Jon Larson / Jesse Kiene (T)		Division / Group Supervisor		Nate Crawford / Seth Ellis (T)	
Operations Chief (Plans)		Rob Poyner (T)		Branch Director			
Safety Officer		Matt Broyles / Eric Brown		Air Attack Supervisor		Chad Bergren	
6. Resources Assigned this Period							
Strike Team / Task Force / Resource Designator		Leader	Number Persons	Tentative Last Work Day	Drop Off Pt / Time		Pick Up Pt / Time
1.	<b>O-161 TFLD Boat Coordinator</b>	<b>Cameron Chambers</b>	<b>1</b>	<b>7/3</b>			
2.	<b>O-50 TFLD</b>	<b>Todd Olson</b>	<b>1</b>	<b>6/30</b>			
3.	<b>O-160 TFLD</b>	<b>Brian Turner</b>	<b>1</b>	<b>7/3</b>			
4.	<b>O-248 TFLD (T)</b>	<b>Jason Ward</b>	<b>1</b>	<b>7/9</b>			
5.	<b>O-162 HEQB</b>	<b>Nicolas Glatt</b>	<b>1</b>	<b>7/3</b>			
6.	<b>O-163 HEQB (T)</b>	<b>Emma Ahlrichs</b>	<b>1</b>	<b>7/3</b>			
7.							
8.	<b>E-1 TBOT WA-NCP NPS</b>		<b>1</b>				
9.	<b>E-3 TBOT Chelan Co. F&amp;R#7</b>		<b>2</b>				
10.	<b>E-12 TBOT WA-OWF Chelan RD</b>		<b>1</b>				
11.	<b>E-91 TBOT DNR Mud Puppy</b>		<b>1</b>				
12.	<b>E-98 TBOT Chelan County Sheriffs</b>		<b>1</b>				
13.	<b>E-43 TBOT Llama Boat</b>		<b>1</b>				
14.	<b>E-120 TBOT Pilgram</b>	<b>Justin Gavin</b>	<b>1</b>	<b>7/11</b>			
15.							
16.	<b>O-136 MEDIC 6</b>	<b>Steve Medina</b>	<b>1</b>	<b>7/8</b>			
17.	<b>O-152 EMT 1</b>	<b>Ivan Huld</b>	<b>1</b>	<b>7/8</b>			
18.							
19.							
20.							
21.							
22.							
23.							
7. Control Operations							
<b>Task:</b> Contain fire spread to the southwest where terrain and fuels allow for high probability of success. Assess fire perimeter progression to the west/southwest at higher elevations.							
<b>Purpose:</b> To slow fire progression, provide time for suppression tactics, and prep around critical values.							
<b>End state:</b> Minimize fire impacts to critical values including private inholdings and Forest Service infrastructure							
8. Special Instructions							
<ul style="list-style-type: none"> <li>In large or long-term spike camps use helicopters, boats, or pack stock to deliver portable backcountry latrines and remove human waste if necessary. If camp does not have adequate pack, boat, or air support for human waste management, establish community latrines well away from water sources and common areas. Use human waste bags, if necessary.</li> <li>Ensure hazard mitigations and IWI protocols are in place before taking action.</li> </ul>							
9. Division / Group Communication Summary							
Function	Frequency	System	Channel	Function	Frequency	System	Channel
Command Repeater	See Comm Plan			Command	See Comm. Plan		
TAC				Air To Ground	See Comm. Plan		
Prepared by (Resource Unit Leader): Name: Gary Duranceau			Approved by (Planning Section Chief) Name: Mike Crawford			Date 6/26/24	Time 1900



AIR OPERATIONS SUMMARY ICS-220											Time Prepared	Date Prepared	Prepared By			
Incident Name / Number			Sunrise	Sunset	Airport	Pumpkin	Shutdown		Operational Period - Date		Operational Period - Time					
Pioneer / WA-SES-000173			05:04	21:05	S10	21:35	18:00		6/26/2024		Mark Hocken, AOBD					
General Remarks, Safety Notes, Hazards, Air Operations Special Equipment, etc.											Helibase Information		Medivac Ship Information			
<p>*Order All Aircraft through Command to Helibase.</p> <p>*Sanitize Buckets before changing water sources.</p> <p>*Clear drop area/line before initiating drop sequence.</p> <p>*Be cognizant of all overhead and environmental hazards while working with Aircraft.</p> <p>*All GPS is to be collected in DMM</p> <p>*** WINDS: return to helibase if winds become unmanageable.</p> <p>*Aviation daily cost to: 2024.pioneer.finance@firenet.gov</p> <p>*Aviation daily cost to: pioneerhelibase2024@gmail.com</p>											Pioneer/ Helibase Location		TFR (A-74) Surface to 10,000' check for new TFR		Medivac ship N-684H	
											47.51.96 N 119.56.56 W		In Effect - 24 Hours		2 EMTs, Litter Kit call helibase to launch	
											Pioneer HB (Chelan) Phone (971) 762-8575		Helispots		Make/Mode 407 Location: Chelan	
											Valley HB Phone (Methow) (971) 727-7255		H1   48 10.755N / 120 31.803W H5   48 12.162N / 120 35.447W H10   48 14.050N / 120 36.461W H12   48 13.325N / 120 35.908W 14 (Stehkin AP)   48 20.75N / 120 43.25 H15   48 08.754N / 120 29.813W H16   48 07.74N / 120 29.55W H25   47.??N / 120.??W		Request Procedure for This Aircraft: Communications on Command,  Short-Haul North Casade N-125CL Order through Helibase/CWICC, CWICC (509) 884-3473 x 2 40 min to 1 hour response on to 2100	
Incident Frequencies			RX	Tone	TX	Tone	AM/FM	Position	Name	Phone	EQUIPMENT/SUPPLIES					
Air to Air Primary (A-8)			123.4000		123.4000		AM	AOBD (Planning)	Mark Hocken	(541) 261-1085	Com (Chelan) Trailer E-20					
Air to Air Secondary (A-9)			118.2750		118.2750		AM	AOBD (Field)	Ted Hass	(541) 646-1318	Hand Wash Station E-47					
A/G Pri Tactical (A-10)			169.1500		169.1500		FM	ASGS	Dave Moore	(513) 616-9192	Water Tender E-77					
A/G Sec Operational (A-11)			168.4000		168.4000		FM	HEBM-T Pioneer	Ben Thayer	(208) 830-1636	Water Tender E-14					
TOLC			166.6125		166.6125		FM	HEBM Pioneer	Ben Wagner	(206) 473-2165	Com (Valley) Trailer E-150					
DECK			163.1000		163.1000		FM	HEBM Valley	Anika Peila	(406) 366-0938						
COMMAND								ATGS	Randy McIandress	(509) 668-7243						
								HLCO	Jerry Messenger	(541) 306-0907						
								Short Haul NC 5CL	Chad Bergren	(541) 219-2594						
								UAS	Mike Hansen	(253) 625-3063						
									Marshall Wallace	(509) 670-6365						
AIR GUARD			168.6250		168.6250	110.9	FM									
VMED 29			155.3475	156.7	155.3475	156.7	FM	CWICC	Aircraft Desk	(509) 884-3473 x2						
								UAO	Cory Dolberry	(509) 668-2801						
HELICOPTERS - Assigned											HELICOPTERS - GACC Prepo					
FAA #	TYPE	Make/Model	Helibase	Start	Avail	Remarks	FAA #	TYPE	Make/Mode	Airport	Avail	Remarks				
HB-16FH (A-22)	1	UH-60	Valley	0800	0900	BKT/LL	H-205TK	2	Bell 205A	Chelan	0800	BKT/LL returning AM				
HB-17FH (A-23)	1	UH-60A	Chelan	0800	0900	BKT/LL										
HB-161KA (A-24)	1	K-1200	Valley	0800	0900	BKT/LL										
HB-344RA (A-45)	1	CH-47D	Valley	0800	0900	BKT/LL										
H-304HA (A-31)	2	Bell 205A	Chelan	0800	0900	BKT/LL										
H-407RL (A-1)	3	407	Chelan	0800	0900	**Unavailable**										
H-684H (A-46)	3	407	Chelan	0800	0900	BKT/LL/Recon/HLCO										
H-544AS (A-60)	3	AS350B3	Chelan	0800	0900	HLCO/Recon										
UAS											FIXED WING AA/HLCO					
Call Sign	Type	Make/Model	Base	Start	Avail	Remarks	FAA #	Call Sign	Make/Model	Base	Start	Avail	Remarks			
UR-31	3	AltaX	Lucerne	0600	2200	IR/PSD	N-586DV (A-42)	610	Commander	WEN	0900	1000	Assigned ATGS			
							H-544AS (A-60)	4AS	AS350B3	Chelan	0800	0900	Assigned HLCO			
							N-197GB	617	Commander	Wenatchee	0900	1000	Wenatchee IA (not assigned)			

# INCIDENT RADIO COMMUNICATIONS PLAN (ICS 205)

## Controlled Unclassified Information//Basic

1. Incident Name:		2. Date/Time Prepared:		3. Operational Period:						
<b>PIONEER</b>		Date: 06/26/2024 Time: 1600		Date/Time From: 06/27/2024 0600 Date/Time To: 06/28/2024 0600						
<b>4. Basic Radio Channel Use:</b>										
Zone Group	Ch #	Function	Channel Name/Trunked Radio	Assignment	RX Freq	RX Tone/NAC	TX Freq	TX Tone/NAC	Mode (A, D, or M)	Remarks
	1	TACTICAL	TAC 1	DIV A & S	168.0500	123.0	168.0500	123.0	A	
	2	TACTICAL	TAC 2	DIV D	168.2000	123.0	168.2000	123.0	A	
	3	TACTICAL	TAC 3	DIV Z	168.6000	123.0	168.6000	123.0	A	
	4	TACTICAL	TAC 4	CONTINGENCY	166.7250	123.0	166.7250	123.0	A	
	5	TACTICAL	TAC 5	ROADS	166.7750	123.0	166.7750	123.0	A	
	6	TACTICAL	TAC 6	BOAT	168.2500	123.0	168.2500	123.0	A	
	7	COMMAND	CMD 7	ALL	168.4750	123.0	165.4000	123.0	A	CHELAN BUTTE
	8	COMMAND	CMD 8	ALL	169.5375	123.0	164.7125	123.0	A	OLD MAID MT
	9	COMMAND	CMD 9	ALL	170.4500	123.0	168.1000	123.0	A	MOORE MT
	10	COMMAND	CMD 10	ALL	170.0125	123.0	165.2500	123.0	A	SLIDE RIDGE
	11	COMMAND	CMD 11	ALL	170.4125	123.0	165.9625	123.0	A	FOX PEAK
	12	TACTICAL	A/G PRI	ALL DIVS	169.1500	000.0	169.1500	000.0	A	
	13	AIR TO GROUND	A/G SEC	ALL DIVS	168.4000	000.0	168.4000	000.0	A	
	14	AIR TO GROUND	A/G 3	ALL DIVS	166.6125	000.0	166.6125	000.0	A	TAKE OFF LANDING CHANNEL
	15	AIR TO GROUND	V/MED 29	ALL DIVS	155.3475	156.7	155.3475	156.7	A	AIR EMS COORDINATION
	16	AIR TO GROUND	AIRGUARD	ALL DIVS	168.6250	000.0	168.6250	110.9	A	EMERGENCY AIRCRAFT CONTACT
<b>5. Special Instructions: 24 hour staffing: PIONEER COMMUNICATIONS PHONE NUMBER: (208) 891-7948 / CURRENT CLONE "PIE 6-21"</b>										
<b>6. Prepared By COML</b>										
Name: SETH BAUMGARTEN										
Signature: <i>Seth Baumgarten</i>										
ICS 205										
IAP Page										
Date/Time: 6/26/24 1600										

## HEALTH AND SAFETY MESSAGE

*SAFETY* starts with *YOU*

We are ALL accountable for SAFE behaviors

**INCIDENT:** Pioneer Fire

**DATE:** June 27, 2024 Day shift

### **Personal Hygiene Related Hazards and Mitigations**

**Hazard:** Ingestion of dirt-bourne illness vectors

**Mitigation:** Wash your hands EVERY TIME before you eat, and after going to the bathroom, where wash is available. Sanitize hands if no wash is available. If you are eating served food at a caterer or chow line at a spike camp you are REQUIRED to wash or sanitize your hands or you will not be served. (Yes, we have seen you non-handwashers in the chow line. DO BETTER!)

**Hazard:** Infection of wounds or scraped/chafed skin

**Mitigation:** Wash or sanitize your hands before engaging in self-care, or care of others. Keep wounds covered with appropriate dressings to keep them clean. Keep dressings dry and change them as needed. Chaffed skin can be treated with a sealing type antimicrobial ointment to ease discomfort due to air exposure and protect the skin from infection. Seek assistance from incident medical personnel.

**Hazard:** Infection of blisters

**Mitigation:** Wash or sanitize your hands before and after engaging in self-care, or care of others. Avoid blisters by treating hot spots first. Proper treatment of blisters is dependent on location and stage of the blister(s). Seek help from medical personnel early to make sure you get it right and have best chances of avoiding infection. Infected blisters may keep you off your feet or out of boots for extended periods – maybe the whole season.

**Hazard:** Respiratory infection- “Camp Crud”

**Mitigation:** Avoid exchange of “dirt” with other people. Keep your dirty parts/stuff to yourself. Do not share pens, radios, keys, eating utensils or other equipment. If you must share, wash and/or sanitize often. Wash and/or sanitize your hands often if operating in high traffic/ high touch environment like ICP. Cover your cough/ sneeze and give others who are coughing or sneezing some space. If you are sick – do not work around others! Notify supervisor and mitigate until better. Seek assistance from incident medical personnel.

**Incident Safety Officers:** Matt Broyles, Eric Brown



# Human Resource Message

## Pioneer Fire

June 27, 2024

### **Work and Fatigue in Wildland Firefighting effects your physical and emotional state!**

Wildland Firefighting is arduous work, performed for long shifts in difficult environmental conditions. The work can be dangerous due to the fire and working conditions. Heat, smoke, rolling rocks, falling snags, and other hazards threaten the firefighter. Fatigue can impair performance and decision making, increasing the risk of injury. Prolonged exposure to fatigue, stress, smoke, and poor nutrition has the potential to increase the incidence of upper respiratory illness, but also mental lapses.

The stress response is necessary to prepare an athlete, firefighter or soldier for a maximal effort in a physical challenge, but it can be unhealthy if it occurs too often in the wrong setting.

#### **Definition:**

**Fatigue**—A sense of tiredness, either mental or physical, brought on by stress (lack of sleep, physical work, nutritional inadequacies, or mental stresses).

Fatigue following work or sleep deprivation is a normal state and can be reversed with adequate recovery or rest.

Fatigued workers perform poorly and behave carelessly, tolerate greater errors, and become inattentive. They display decreased motivation, increased irritability, depression, and low morale.

**Correct Nutrition, Hydration and Rest are good coping mechanisms for stress and fatigue. Make use of your down time and rest per the work/rest guidelines.**

Margaret Dietrich, Human Resource Specialist

## FINANCE MESSAGE

**Finance Email:** [2024.pioneer.finance@firenet.gov](mailto:2024.pioneer.finance@firenet.gov)

**Finance Phone:** 484-501-1835

**This incident requires electronic documentation.** Please email your time to the address above. Scanned PDF's please, no .JPG's. Feel free to call finance for help if needed. Scanners are also available at ICP.

### Required Documents

Overhead, Agency Crews & Cooperators	Contract Resources
<b>Finance docs needed:</b> Resource Order, Manifest, Cooperative Agreement, Casual Hire Form w/ECI# (as applicable)	<b>Finance docs needed:</b> Resource Order, Manifest, Full Contract/Agreement, Certifications ( <i>if required</i> ) Pre-Inspection
<b>Daily:</b> CTRs, Shift Tickets  <b>CTRs should be named as:</b> CTR_RO#_YYMMDD-DD (Ex: CTR_O235_240605-07)  <b>Shift Tickets should be named as:</b> ST_RO#_YYMMDD-DD (Ex: ST_E5_240623-27)	<b>Daily:</b> CTRs, Shift Tickets, receipts (claims, etc.) <b>NOTE: Document travel times and odometer readings</b>
<b>Demob:</b> Signed OF-288; Signed OF-286	<b>Demob:</b> Contractor Evaluations, Shift Tickets, receipt(s) for Addition/Deductions, Post-Inspection, Signed OF-286
<p><b>"H-Pay"- Entitlement to Hazardous Pay Differential (5 CFR 550.904) – Hazard pay</b>                      MUST be supported by a justification. If justification is not provided, you chance losing your entitlement.</p>	<p><b>Please call finance regarding issues with your time:</b></p> <p>No one on List today, <b>any questions for Finance, please email us. Tomorrow we will have a phone number for Team 7 Finance Thank You.</b></p>

Incident Name: **Pioneer**

Incident Number: **WA-SES-000173**

Financial codes:

WA DNR – **221-LDW**

DOI – **RZ79**

USDA – **PNRZ79 (1522)**

**Please make sure you check in using QR code on the front of the IAP and then email your time daily.**

**THANK YOU!!**



United States Department of Agriculture

# OKANOGAN-WENATCHEE NATIONAL FOREST

## Resource Guidelines for Fire Suppression

Fire: Pioneer

Location: Pioneer Creek, North shore of Lake Chelan

SCAN QR CODE FOR CURRENT RESOURCE GUIDELINES



USDA  
Forest  
Service

Pacific  
Northwest  
Region

Okanogan-  
Wenatchee  
National Forest

# Photos and Videos Needed!

Photos and short videos (30 seconds or less) are needed to tell the story of the Pioneer Fire.

Please send them to PIO staff

via email: [2024.pioneer@firenet.gov](mailto:2024.pioneer@firenet.gov)

Provide your name for credit and basic info about where the photo was taken and what's happening in it.

Your photos and videos are being posted at:

**Inciweb:** Pioneer Fire

**Facebook:** - <https://www.facebook.com/nwteam7>

- <https://www.facebook.com/pioneerfireinformation>

- <https://www.facebook.com/cwafireinfo>

## LOST & FOUND

We have lost and found! Please stop by the Info shop in ICP to find your lost goods!

# Thank you!

# LOGISTICS NOTES

---

## Pioneer Fire ICP

Breakfast 0530 – 0900

Lunch @ Refer Trailer – 0500 - 2100

Dinner 1800 -2100

Shower 0500 – 1200 & 1400 – 2200

Supply 0600 – 2200

Ground Support 0700 – 2100

Fuel Tender 0700 – 2100

Weed Wash 0700 – 1400 & 1600 – 2000

## FOB Lucerne

Breakfast 0600 - 0900

Lunch – Pickup with Breakfast

Dinner 2030 – 2130

Shower 0500 – 1200 & 1400 – 2200

Supply 0600 – 2200

Ground Support Contact Numbers:

Casey Glade 435-704-4702, Joe Keady 541-733-6701

## Ordering Information

Submit all orders on General Message Form 213 to the following email address;

[2024.pioneer.ordering@firenet.gov](mailto:2024.pioneer.ordering@firenet.gov)

Ordering Manager Noe Reyes 208-416-3715



# Example GM (ICS213) for Boat Transportation

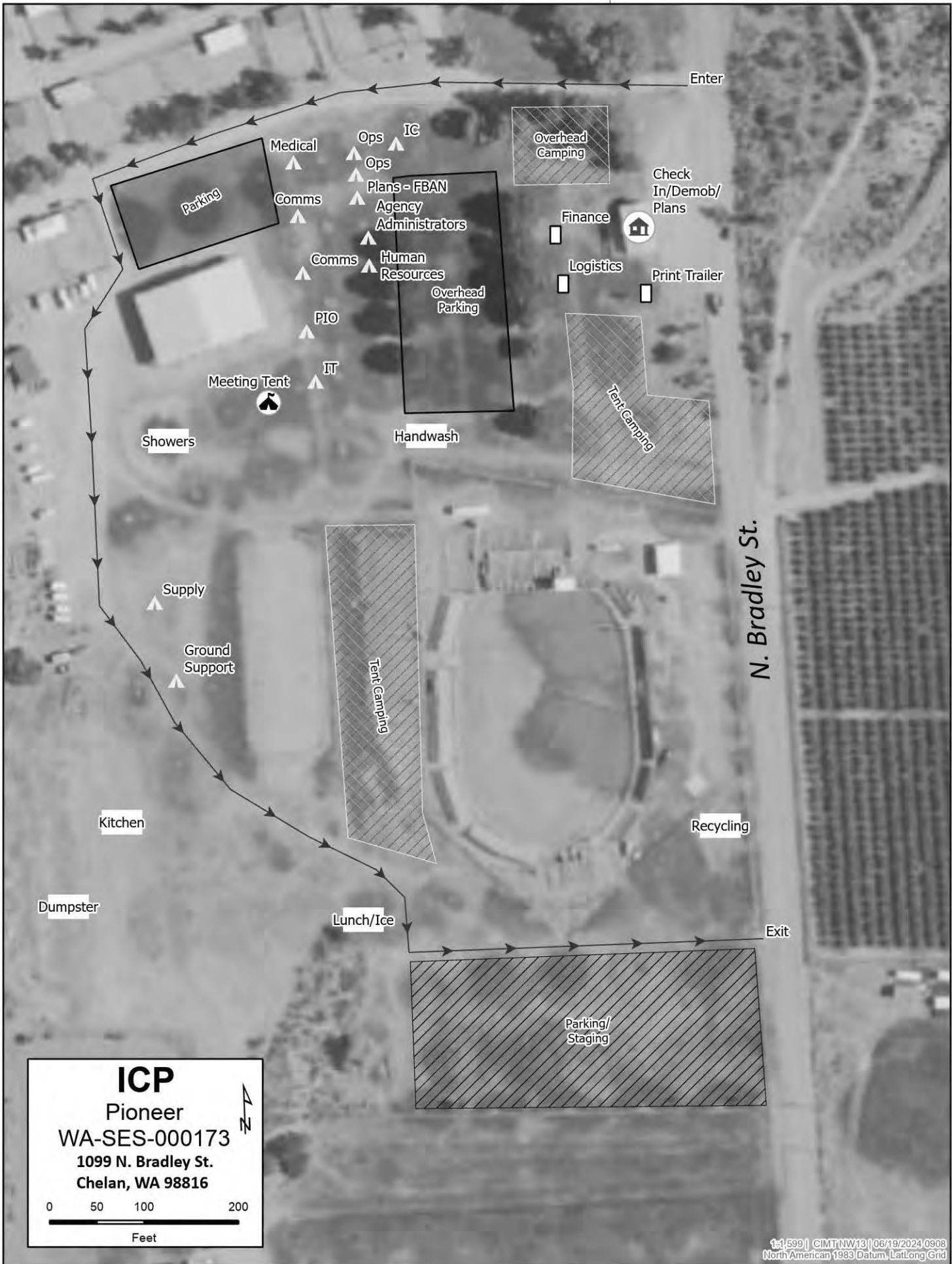
**\*\* WHEN ARRANGING BOAT TRANSPORTATION USE THE FOLLOWING \*\***

**Nathan Crawford, DIVS, 541-219-1374, [Nathan\\_crawford@fws.gov](mailto:Nathan_crawford@fws.gov)**

**Seth Ellis, DIVS (T), 509-860-3290, [seth.ellis453@gmail.com](mailto:seth.ellis453@gmail.com)**

## GENERAL MESSAGE (ICS 213)

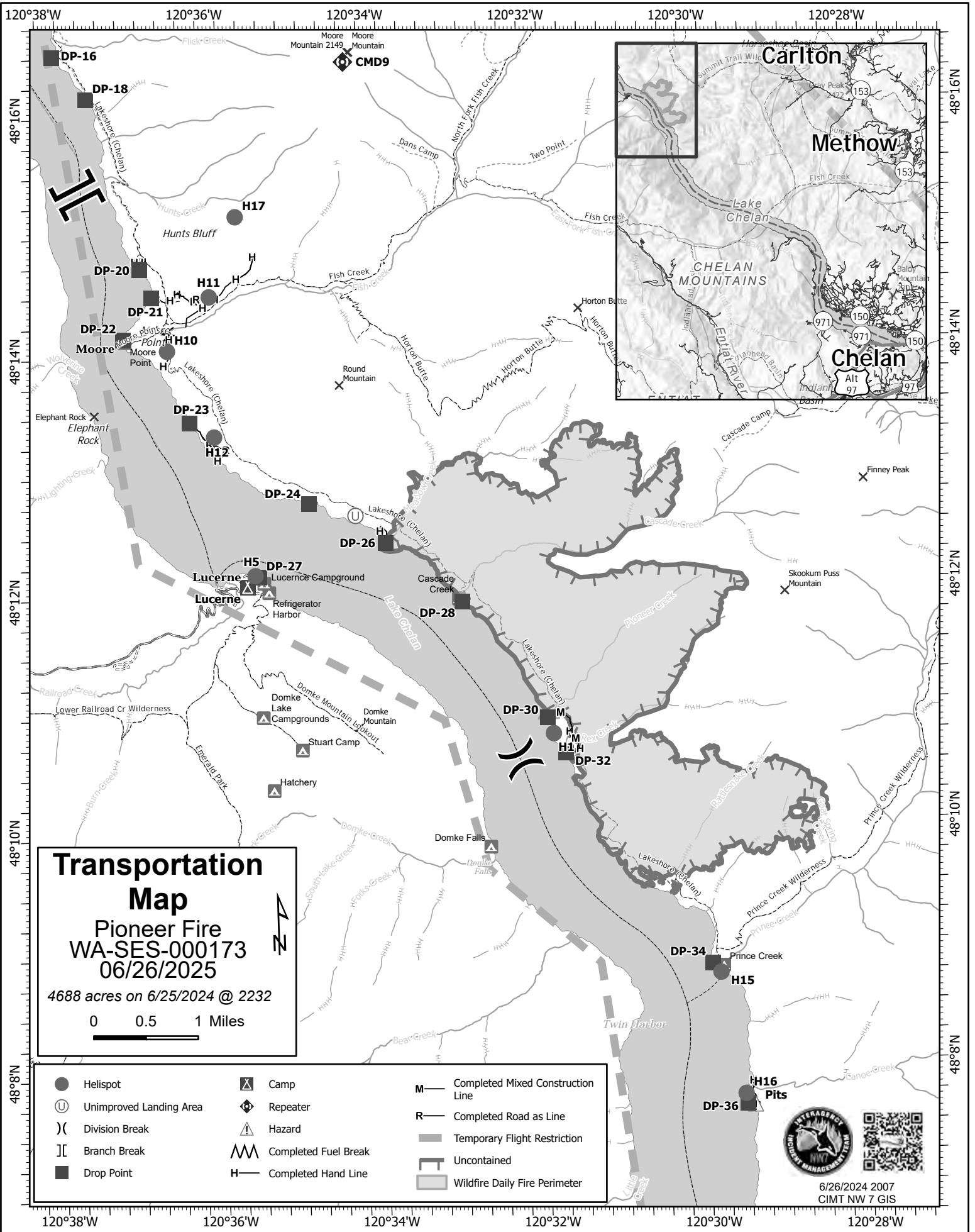
<b>1. Incident Name</b> (Optional): Pioneer Fire		
<b>2. To</b> (Name and Position): Nate Crawford DIVS/Seth Ellis- Boat DIVS(t)		
<b>3. From</b> (Name and Position):		
<b>4. Subject:</b> Ferry Tickets	<b>5. Date:</b>	<b>6. Time</b>
<b>7. Message:</b> <p style="text-align: center;">SAMPLE GENERAL MESSAGE FORM WITH REQUIRED INFORMATION</p> <p>O or C # _____</p> <p>Departure Date _____</p> <p>Ferry Ticket Departure Location (Chelan/Fields Point/Lucerne/Stehekin) _____</p> <p>Ferry Ticket Arrival Location (Chelan/Fields Point/Lucerne/Stehekin) _____</p> <p>Email address for confirmation _____</p> <p>* If unable to receive email, please note and tickets will be emailed to either your DIVS or the Boat Coordinator.*</p> <p>Phone #: _____</p> <p>FERRY TICKETS NEED TO BE SUBMITTED TO BOAT DIVS BY 1600 THE DAY PRIOR OF DESIRED DEPARTURE.</p> <p>IT IS PREFERRED FORMS ARE SUBMITTED 48 HRS PRIOR TO KNOWN AND SET LWD.</p>		
<b>8. Approved by:</b> Name: _____ Signature: _____ Position/Title: _____		
<b>9. Reply:</b>		
<b>10. Replied by:</b> Name: _____ Position/Title: _____ Signature: _____		
<b>ICS 213</b>	Date/Time: _____	



**ICP**  
 Pioneer  
 WA-SES-000173  
 1099 N. Bradley St.  
 Chelan, WA 98816

0 50 100 200  
 Feet

1:1,599 | CIMT/NW13 | 06/19/2024 0908  
 North American 1983 Datum, Lat/Long Grid



# DIVISION PLANNING WORKSHEET

NEXT OPERATIONAL DATE	DIVISION/GROUP	NAME OF DIVISION/GROUP
-----------------------	----------------	------------------------

__ ROLL OVER ASSIGNED RESOURCES	__ EXCESS RESOURCES	__ CORRECTION TO 204
---------------------------------	---------------------	----------------------

E OR C NUMBER	RESOURCE DESIGNATOR	LEADER	NO. PERSONS	COMMENTS

OPERATIONAL PROJECTION (Task, Purpose, End State) 24 hrs

OPERATIONAL PROJECTION (Task, Purpose, End State) 48 hrs

OPERATIONAL PROJECTION (Task, Purpose, End State) 72 hrs

\_\_ REQUEST FOR ADDITIONAL RESOURCES

NUMBER	TYPE	RESOURCE KIND	DATE NEEDED

CRITICAL NEEDS: If your resource request is critical, describe the mission and the duration resources are needed.



Team 7 Line Supply Order		Order #			
Date & Time Order Placed	Deliver To Location/time (Division, Drop Point, Heli Spot, Lat/Long)	Delivery Method (Driver, Helo, DIVS to P/U)			
Order received in Communications (name & time)					
Ordered by (name and Position)					
Ground Contact					
Contact Freq.					
Special Instructions/line length/ elevation					
Order received in Helibase by (name & time)					
Order shipped to line by (name & time)					
#	Item	Amount	#	Item	Amount
1	Meals #1842 MRE 12/Cs		33	Bath in a Bag, Large # 0712	
2	Water 0048 5 gal cubies		34	Bath in a Bag, Small # 0206	
3	Gatorade 24/Cs		35	Coffee Kit #0480	
4	Batteries, AA #0030 24/pg		36	Coffee 3lb Can	
5	Batteries, AAA #7471 24/pg		37	Folda-Tank 1500 gal # 0664	
6	Gas Unleaded/5 gal		38	Pumpkin 3000 gal. # 0568	
7	2 Cycle Oil #7724 5 Gal mix		39	Backpack Pump # 0909	
8	2 Cycle Oil #3444 1 Gal. mix		40	Mark III pump + Kit # 0148	
9	Diesel (5 gal.)		41	Lightweight Pump + Kit # 8606	
10	Bar Oil #1880 Gal.		42	Volume Pump + # 1222	
11	Bar Oil # 1869, Qt		43	Hose 1 1/2" # 1239 100' lg	
12	Shovel # 0171		44	Hose 1" # 1238 100' lg	
13	Pulaski # 0146		45	Hose 3/4" # 1016 50' lg	
14	McLeod # 0296		46	Reducer 1 1/2" to 1" # 0010	
15	Combi #1180		47	Reducer 1" to 3/4" # 0733	
16	Chainsaw Kit # 0340		48	Gated "Y" 1 1/2" # 0231	
17	Drip Torch # 0241 Empty		49	Gated "Y" 1" # 0259	
18	Fusee #0105		50	Gated "Y" 3/4" # 0904	
19	Sleeping Pad # 1566		51	In-line Tee 1 1/2" to 1" # 0230	
20	Sleeping Bag # 0022		52	Nozzle KK 1 1/2" # 1082	
21	Fly Tent #0070		53	Nozzle KK 1" # 1081	
22	Plastic Sheeting # 0143		54	Nozzle 3/4" # 0136	
23	Parachute Cord # 0533		55	Nozzle, Forrester 1" # 0024	
24	Fiber Tape # 0222		56	Sprinkler kit #1048	
25	Garbage Bags # 0021		57		
26	Leadline 3000 lbs. # 0528		58		
27	Cargo Net 3000lb # 0531		59	Team 7 Hose Lay Kit	
28	Swivel 3000lb # 0526		60		
29	Slingable Bag 72 gal. Blivet # 0426		61		
30	Foam 5 gal. # 1145		62		
31	Toilet Paper # 0142		63		
32			64		

**TEAM 7 HOSE LAY KIT**  
7/16/2014

Item	Amount
1 1/2 in. synthetic hose	1000 ft.
1 in. synthetic hose	500 ft.
3/4 in. garden hose	500 ft.
1 1/2 in. gated wye	5 ea.
1 1/2 in. - 1 in. reducers	5 ea.
1 in. combination nozzle	5 ea.
1 in. - 3/4 in. reducer	5 ea.
3/4 in. valve, shutoff, ball	5 ea.
3/4 in. Nozzle	5 ea.
3/4 in gated wyes	5 ea.

Item	Amount
Sprinkler head w/couplings	4 ea.
3/4 in. garden hose	250 ft.
1 1/2 x 1 1/2 x 1 in. Tee	4 ea.
1 x 3/4 reducer	4 ea.
1 1/2 in. - 1 in. reducers	1 ea.
3/4 in gated wyes	2 ea.
3/4 in. valve, shutoff, ball	4 ea.
3/4 in. Nozzle	1 ea.
3/4 pressure regulator,	4 ea.
1 in. nozzle, plastic 60 GPM	1 ea.
10 in. adjustable wrench	1 ea.

**SPRINKLER KIT NFES # 1048**

**LINE ORDER PROCESS**

Line orders from the field should go through the Communication Unit via radio (primary) or 24-hour phone number shown cover of the IAP. All other supply requests should be submitted, in-person, to the Supply Unit.

## Check In Message

- Please complete the virtual check-in process via the QR code on the front cover.
- You are not checked in until you provide the following:
  - 1) Red Cards
  - 2) Roster/Manifest
- Please email documents to: [2024.pioneer.checkin@firenet.gov](mailto:2024.pioneer.checkin@firenet.gov)

Any Questions:

Phone: 509-661-5372

Email: [2024.pioneer.checkin@firenet.gov](mailto:2024.pioneer.checkin@firenet.gov)

---

## Demob Message

- Fliers complete the “Air Travel Request” via the QR code on the front cover 72 hours prior to flight date.
- Return supplies to the Cache.
- Return radios, antennas, etc., to Communications.
- Contact Finance about closing out your paperwork.
- Once the above items have been completed, SCAN the QR code on the front cover and complete the demob questions.

Any Questions:

Phone: 509-662-5376

Email: [2024.pioneer.demob@firenet.gov](mailto:2024.pioneer.demob@firenet.gov)



# Demob List

**Incident: PIONEER US-WA-SES-000173**  
**Demob questions call Jay (509) 661-5376**

## Thursday 06/27/2024

### EQUIPMENT

HND1	E-48	HND1 - PREMIER SERVICES & EQUIPMENT LLC - 083836
HOSU	E-20	HOSU - WESTERN WILDFIRE LLC - 206512

### OVERHEAD

DIVS	O-53	THORP, ERIC JOHN
DIVS	O-54	CARR, CHRISTOPHER J
EQPM	O-23	CARMICHAEL, CHARLOTTE JEAN
GSUL	O-8.29	BRADDY, WILLIAM K
IMET	O-58	SMITH, TRENT ALLEN
PTRC	O-46	COHN, EMILY JENNA
PTRC	O-47	ALLEN-FLOWERS, CHRISTOPHER JORDAN
RCDM	O-61	HAUCK, BENJAMIN
TFLD	O-48	COBURN, JEFFREY A
TFLD	O-49	ZEMKE, JEREMY
TFLD	O-52	YBARRA, DANTE

## Friday 06/28/2024

### CREWS

CRW1	C-8	CRW1 - UNION IHC
------	-----	------------------

### EQUIPMENT

FUT2	E-59	FUT2 - GREEN PETROLEUM, LLC - 259649
GRD2	E-71	GRD2 - PETTET TRANSPORTATION INC. - V13451
GRD2	E-72	GRD2 - SCOTTS EXCAVATING & HAULING LLC - 405547
WTS2	E-77	WTS2 - DAVID RAINS - 147794

### OVERHEAD

HECM	O-219	TIRRELL, KATHRYN
SOFR	O-85	MURRIN, ANDY K



# Pioneer Fire WA-SES-000173

## C&G Contact List

Incident Commander	Lefevre	Nathan	<a href="mailto:nlefevre@blm.gov">nlefevre@blm.gov</a>	(541) 255-6595
Deputy Incident Commander	Orr	Christopher	<a href="mailto:christopher_orr@nps.gov">christopher_orr@nps.gov</a>	(530) 640-1464
Safety Officer	Brown	Eric	<a href="mailto:ericbrown0523@gmail.com">ericbrown0523@gmail.com</a>	(928) 699-3477
Safety Officer	Broyles	Matt	<a href="mailto:admbroyles@gmail.com">admbroyles@gmail.com</a>	(541) 591-6151
Liaison Officer	Christianson	Shawn	<a href="mailto:shawn.christianson.adm@colvilletribes.com">shawn.christianson.adm@colvilletribes.com</a>	(509) 429-3348
Liaison Officer	Suba	Mark	<a href="mailto:marksuba12@gmail.com">marksuba12@gmail.com</a>	(541) 219-9048
Liaison Officer	Brody	Greg	<a href="mailto:lmgregbrody@gmail.com">lmgregbrody@gmail.com</a>	(503) 482-8071
Liaison Officer (T)	Marchand	Rhonda	<a href="mailto:rmarchand76@yahoo.com">rmarchand76@yahoo.com</a>	(509) 634-1166
Public Information Officer	Stecker	Livia	<a href="mailto:livia_stecker@firenet.gov">livia_stecker@firenet.gov</a>	(509) 675-3504
Finance Section Chief	Westgate	Patty	<a href="mailto:pattywestgate@gmail.com">pattywestgate@gmail.com</a>	(541) 892-8432
Finance Section Chief (T)	Bailey	Lori	<a href="mailto:lori.bailey@usda.gov">lori.bailey@usda.gov</a>	(541) 589-0806
Operations Section Chief	Larson	Jon	<a href="mailto:jon_larson@fws.gov">jon_larson@fws.gov</a>	(208) 631-6488
Operations Section Chief	Merritt	Seth	<a href="mailto:smerritt@esf-r.org">smerritt@esf-r.org</a>	(425) 501-7384
Operations Section Chief	Kiene	Jesse	<a href="mailto:jkiene@blm.gov">jkiene@blm.gov</a>	(541) 531-5568
Operations Section Chief (T)	Poyner	Rob	<a href="mailto:robert.poyner@usda.gov">robert.poyner@usda.gov</a>	(425) 512-2621
Logistics Section Chief	Yager	Max	<a href="mailto:orcamax2015@gmail.com">orcamax2015@gmail.com</a>	(541) 690-6627
Logistics Section Chief	Vaughan	Franklin	<a href="mailto:franklin.vaughan@usda.gov">franklin.vaughan@usda.gov</a>	(859) 619-7244
Logistics Section Chief	Wedekind	Cindy	<a href="mailto:cwedekind59@gmail.com">cwedekind59@gmail.com</a>	(541) 450-1136
Planning Section Chief	Crawford	Michael	<a href="mailto:mcrawfor@blm.gov">mcrawfor@blm.gov</a>	(458) 212-0501
Planning Section Chief (T)	Plummer	Debbie	<a href="mailto:dplummer@blm.gov">dplummer@blm.gov</a>	(509) 991-0334



# ACTIVITY LOG (ICS 214)

<b>1. Incident Name:</b>		<b>2. Operational Period:</b> Date From: _____ Date To: _____ Time From: _____ Time To: _____	
<b>3. Name:</b>	<b>4. ICS Position:</b>	<b>5. Home Agency (and Unit):</b>	
<b>6. Resources Assigned:</b>			
Name	ICS Position	Home Agency (and Unit)	
<b>7. Activity Log:</b>			
Date/Time	Notable Activities		
<b>8. Prepared by:</b> Name: _____ Position/Title: _____ Signature: _____			
<b>ICS 214, Page 1</b>	Date/Time: _____		

## MEDICAL PLAN (206 WF)

1. Incident/Project Name				2. Operational Period				
Pioneer Fire				Date/Time: 06/27/24 0600-2200				
3. Ambulance Services								
Name	Complete Address	Phone	Advanced Life Support (ALS)					
Lake Chelan EMS	Chelan, WA	911	Yes	X			No	
4. Air Ambulance Services								
Name	Phone/Channel	Frequency, Type of Aircraft & Capability						
Life Flight - Brewster	1-800-232-0911 911	VMED 29, Rotor, ALS, 24 hr						
Airlift NW - Wenatchee	1-800-426-2430 911	VMED 29, Rotor, ALS, 24 hr						
Medivac Ship	Command 7,8,9,10,11 (Linked)	VMED 29, Rotor, BLS, Daytime						
Mount Rainer Ship	CWICC 1-509-884-3473 x 2	VMED 29, Rotor, BLS, Daytime, Short Haul						
Snohawk 10 - Snohomish	1-800-258-5990 911	VMED 29, Rotor, ALS, Daytime, Hoist						
Spokane County Hoist - Spokane	1-509-532-8930 911	VMED 29, Rotor, ALS, 24 hr, Hoist Daytime Only						
5. Hospitals								
Name	Degrees Decimal Minutes		Travel Time From Fire		Phone	Helipad		Level of Care
			Air	Boat		Yes	No	
Lake Chelan Health 110 S. Apple Blossom Drive Chelan WA	Lat:	47° 50' 20 N		30 Min	3 Hr	509-683-2474	X	Level IV Trauma
	Long:	119° 59' 20 W						
Central Washington Hospital 1201 S. Miller Wenatchee WA	Lat:	47° 24. 43 N		1 Hr	4 Hr	509-433-3115	X	Level II Trauma
	Long:	120° 19. 28 W						
Harborview Medical Center 325 9 <sup>th</sup> Ave Seattle WA	Lat:	47° 36. 24 N		1.5 Hr	6 Hr	206-744-4025	X	Level I Trauma Burn Center
	Long:	122° 19. 45 W						
<b>ICP</b>	<b>EMS Responders &amp; Capability:</b>			James Brown MEDL/Paramedic		360-775-5413		
				Mariann Turley MEDL/AEMT		509-496-9370		
	Equipment Available on Scene:			ALS Kit, AED, O2, OTC meds				
	Medical Emergency Channel:			Command 7,8,9,10,11 (Linked)				
	ETA for Ambulance to Scene:							
	Air:			NA				
	Ground:			15 Min				
	Approved Heli-Spot:			NA				
<b>LUCERNE FOB</b>	<b>EMS Responders &amp; Capability:</b>			Ben Meacham MEDL/EMTF		360-921-3817		
				MEDIC 6 Steve Medina (Boat Medical)		360-556-9568		
				EMT 1 Ivan Huld (Boat Medical)		360-888-9880		
	Equipment Available on Scene:			ALS Kit, AED, O2, OTC meds				
	Medical Emergency Channel:			Command 7,8,9,10,11 (Linked)				
	ETA for Ambulance to Scene:							
	Air:			2 hr				
	Water/Ground:			3 hr				
<b>BRANCH I</b>	<b>EMS Responders &amp; Capability:</b>			MEDIC 1 Remington Becker (DIV Z)		360-903-8612		
				MEDIC 3 Adam Lathrop (DIV A)		425-531-0469		
				EMT 2 Aidan Noel (DIV A)		206-458-0103		
				EMT 3 James Franklin (DIV A)		253-312-1374		
				REMS 2 Brayden Kirk + 3 (DIV D)		509-264-8203		
				Kevin Smith MEDL/EMPF (Stehekin FOB)		509-710-0239		
	Equipment Available on Scene:			ALS Kit, Monitor/Defib, O2				
	Medical Emergency Channel:			Command 7,8,9,10 (Linked)				
ETA for Ambulance to Scene:								
Air:			2 hr					
Water/Ground:			3 hr					
Approved Heli-Spots:								
H1 48° 10.813' N			H11 48° 14.492' N		H15 48° 08.754' N			
120° 31.925' W			120° 35.922' W		120° 29.813' W			
H10 48° 14.099' N			H12 48° 13.381' N		H16 48° 07.744' N			
120° 36.782' W			120° 35.919' W		120° 29.541' W			
Lat:			NA					
Long:			NA					

## MEDICAL PLAN (206 WF)

<b>BRANCH V</b>	<b>EMS Responders &amp; Capability:</b>	<b>MEDIC 2 Joel Bower (CONTINGENCY)</b> 360-461-7390 <b>MEDIC 5 Brian Linacre (CONTINGENCY)</b> 301-781-7990 <b>REMS 1 Ray Storm +4 (DIV S)</b> 415 637-0491 <b>MEDIC 4 Nathan Etherington (DIV S)</b> 360-969-1251
	Equipment Available on Scene:	ALS Kit, Monitor/Defib, O2, Rescue Gear
	Medical Emergency Channel:	Command 7,8,9,10,11 (Linked)
	ETA for Ambulance to Scene:	
	Air:	2 hr
	Ground:	3 hr
	Approved Heli-Spot:	NA
	Lat:	<b>H25 47° 59.200' N</b>
Long:	<b>120° 16. 521' W</b>	
<b>TBD</b>	<b>EMS Responders &amp; Capability:</b>	TBD
	Equipment Available on Scene:	
	Medical Emergency Channel:	Command 7,8,9,10,11 (Linked)
	ETA for Ambulance to Scene:	
	Air:	2 hr
	Ground:	3 hr
	Approved Heli-Spot:	NA
	Lat:	NA
Long:	NA	
<b>TBD</b>	<b>EMS Responders &amp; Capability:</b>	TBD
	Equipment Available on Scene:	
	Medical Emergency Channel:	Command 7,8,9,10,11 (Linked)
	ETA for Ambulance to Scene:	
	Air:	2 hr
	Ground:	3 hr
	Approved Heli-Spot:	NA
	Lat:	NA
Long:	NA	
<b>TBD</b>	<b>EMS Responders &amp; Capability:</b>	TBD
	Equipment Available on Scene:	
	Medical Emergency Channel:	Command 7,8,9,10,11 (Linked)
	ETA for Ambulance to Scene:	
	Air:	
	Ground:	
	Approved Heli-Spot:	NA
	Lat:	NA
Long:	NA	
<b>TBD</b>	<b>EMS Responders &amp; Capability:</b>	TBD
	Equipment Available on Scene:	
	Medical Emergency Channel:	Command 7,8,9,10,11 (Linked)
	ETA for Ambulance to Scene:	
	Air:	
	Ground:	
	Approved Heli-Spot:	NA
	Lat:	NA
Long:	NA	

Prepared By (Medical Unit Leader)	Date	Reviewed By (Safety Officer)	Date
Mariann Turley MEDL	06/26/24	Matt Broyles SOFC	06/26/24
Signature: <i>Mariann Turley</i>		Signature: <i>Matt Broyles</i>	

# MEDICAL PLAN (ICS 206 WF)

Controlled Unclassified Information//Basic

## Medical Incident Report

**FOR A NON-EMERGENCY INCIDENT, WORK THROUGH CHAIN OF COMMAND TO REPORT AND TRANSPORT INJURED PERSONNEL AS NECESSARY.**

**FOR A MEDICAL EMERGENCY: IDENTIFY ON SCENE INCIDENT COMMANDER BY NAME AND POSITION AND ANNOUNCE "MEDICAL EMERGENCY" TO INITIATE RESPONSE FROM IMT COMMUNICATIONS/DISPATCH.**

Use the following items to communicate situation to communications/dispatch.

**1. CONTACT COMMUNICATIONS / DISPATCH (Verify correct frequency prior to starting report)**

*Ex: "Communications, Div. Alpha. Stand-by for Emergency Traffic."*

**2. INCIDENT STATUS: Provide incident summary (including number of patients) and command structure.**

*Ex: "Communications, I have a Red priority patient, unconscious, struck by a falling tree. Requesting air ambulance to Forest Road 1 at (Lat./Long.) This will be the Trout Meadow Medical, IC is TFLD Jones. EMT Smith is providing medical care."*

Severity of Emergency / Transport Priority	<input type="checkbox"/> RED / PRIORITY 1 Life or limb threatening injury or illness. Evacuation need is IMMEDIATE <i>Ex: Unconscious, difficulty breathing, bleeding severely, 2<sup>o</sup> – 3<sup>o</sup> burns more than 4 palm sizes, heat stroke, disoriented.</i> <input type="checkbox"/> YELLOW / PRIORITY 2 Serious Injury or illness. Evacuation may be DELAYED if necessary. <i>Ex: Significant trauma, unable to walk, 2<sup>o</sup> – 3<sup>o</sup> burns not more than 1-3 palm sizes.</i> <input type="checkbox"/> GREEN / PRIORITY 3 Minor Injury or illness. Non-Emergency transport <i>Ex: Sprains, strains, minor heat-related illness.</i>	
Nature of Injury or Illness & Mechanism of Injury		<i>Brief Summary of Injury or Illness (Ex: Unconscious, Struck by Falling Tree)</i>
Transport Request		<i>Air Ambulance / Short Haul/Hoist Ground Ambulance / Other</i>
Patient Location		<i>Descriptive Location &amp; Lat. / Long. (WGS84)</i>
Incident Name		<i>Geographic Name + "Medical" (Ex: Trout Meadow Medical)</i>
On-Scene Incident Commander		<i>Name of on-scene IC of Incident within an Incident (Ex: TFLD Jones)</i>
Patient Care		<i>Name of Care Provider (Ex: EMT Smith)</i>

**3. INITIAL PATIENT ASSESSMENT: Complete this section for each patient as applicable (start with the most severe patient)**

Patient Assessment: See IRPG page 106

Treatment:

**4. TRANSPORT PLAN:**

Evacuation Location (if different): (Descriptive Location (drop point, intersection, etc.) or Lat. / Long.) Patient's ETA to Evacuation Location:

Helispot / Extraction Site Size and Hazards:

**5. ADDITIONAL RESOURCES / EQUIPMENT NEEDS:**

*Example: Paramedic/EMT, Crews, Immobilization Devices, AED, Oxygen, Trauma Bag, IV/Fluid(s), Splints, Rope rescue, Wheeled litter, HAZMAT, Extrication*

**6. COMMUNICATIONS: Identify State Air/Ground EMS Frequencies and Hospital Contacts as applicable**

Function	Channel Name/Number	Receive (RX)	Tone/NAC *	Transmit (TX)	Tone/NAC *
COMMAND					
AIR-TO-GRND					
TACTICAL					

**7. CONTINGENCY: Considerations: If primary options fail, what actions can be implemented in conjunction with primary evacuation method? Be thinking ahead.**

**8. ADDITIONAL INFORMATION: Updates/Changes, etc.**

**REMEMBER:** Confirm ETA's of resources ordered. Act according to your level of training. Be Alert. Keep Calm. Think Clearly. Act Decisively.