

FRIDAY



JUNE 28, 2024

OPERATION PERIOD

Day: 0700 - 2100

COMMUNICATIONS 24-HOUR  
EMERGENCY NUMBER

(208) 891-7948

PIONEER CHARGE CODES

USFS: PN RZ79 (1522)

DOI: RZ79

WA DNR: 221-LDW

SEND PHOTOS TO:

2024.pioneer@firenet.gov



Maps, IAP,  
Finance / Eval.



# PIONEER

## INCIDENT ACTION PLAN

**Pioneer**

WA-SES-000173



**Notes**

|  |
|--|
|  |
|  |
|  |
|  |
|  |
|  |
|  |
|  |
|  |
|  |
|  |
|  |

|         | Ground | Air |
|---------|--------|-----|
| FS:     |        |     |
| DNR:    |        |     |
| OSC:    |        |     |
| FSAA:   |        |     |
| DNR AA: |        |     |

|                            |                                    |                                       |                        |
|----------------------------|------------------------------------|---------------------------------------|------------------------|
| <b>INCIDENT OBJECTIVES</b> | 1. Incident Name<br><b>PIONEER</b> | 2. Date Prepared<br><b>06/27/2024</b> | 3. Time<br><b>1900</b> |
|----------------------------|------------------------------------|---------------------------------------|------------------------|

4. Operational Period

**Day Operations: 0700-2100**

**Strategic Framework:**

The Pioneer Fire is a full suppression fire utilizing strategies and tactics that provide the highest likelihood of success while mitigating risks to the responders and public. Extreme terrain prevents direct attack. Indirect lines are being identified and established that reduces risk to responders while protecting identified values including private and federal infrastructure and recreational values.

**Management Objectives:**

- Ensure the safety and well-being of responders and the public by making timely risk-informed decisions that align with values at risk.
- Protect private and federal infrastructure and recreational values.
- Foster relationships with local cooperators and the public by providing coordinated, accurate, and timely information.
- Coordinate suppression activities with READ's to identify and mitigate current and future impacts to the landscape and resources.
- Treat each other with dignity and respect and act in a professional manner on the fire and in the communities.
- Manage cost commensurate with values at risk by coordinating with the Agency Administrators and Incident Business Advisors.

**Operational Objectives:**

- Implement an effective suppression strategy utilizing direct attack where and when appropriate to protect values at risk. When fire behavior, terrain, or safety concerns prohibit direct attack, utilize other suppression tactics such as indirect and point protection as appropriate to reduce risk to responders. Take advantage of natural features such as breaks in fuels, topographic features, or changes in weather.
- Establish indirect control lines with the highest probability of success which prevent fire spread into populated areas.
- Communicate with local law enforcement officials to ensure current and potential evacuations are coordinated.

6. Weather Forecast for Period

7. General Safety Message

8. Attachments (mark if attached)

|   |                                 |   |                        |   |                      |
|---|---------------------------------|---|------------------------|---|----------------------|
| X | Organization List - ICS 203     | X | Medical 206WF - 8 Line | X | Finance Message      |
| X | Div. Assignment Lists - ICS 204 | X | Safety Message         | X | Dutch Creek Protocol |
| X | Communications Plan - ICS 205   |   | LCES – ICS 215A        | X | Phone List           |
| X | Medical Plan - ICS 206          | X | Weather Forecast       | X | Incident Map(s)      |
| X | Air Operation Summary - ICS 220 | X | Fire Behavior          | X | Unit Log             |

Prepared by Planning Section Chief

*Mike Crawford*

Approved by Incident Commander

*Nathan Letourneau*

| ORGANIZATION ASSIGNMENT LIST                              |  |
|---|--|
| 1. Incident Name<br><b>PIONEER</b>                        |  |
| 2. Date Prepared<br><b>JUNE 27, 2024</b>                  | 3. Time Prepared<br><b>1800</b>  |
| 4. Operational Period<br><b>JUNE 28, 2024 0700 – 2100</b> |  |
| 5. Incident Commander and Staff                           |  |
| Position  | Name   |
| Incident Commander  | Nate LeFevre   |
| Incident Commander (T)                                    | Steve North  |
| Deputy  | Chris Orr  |
| Safety Officer  | Matt Broyles / Eric Brown  |
| Information Officer                                       | Liv Stecker  |
| Liaison   | Shawn Christianson / Greg Brody (Stehekin) / Mark Suba / Rhonda Marchand (T)     |
| Human Resources   | Margaret Dietrich  |
| 6. Agency Representatives                                 |  |
| Agency  | Name   |
| USFS Oka/Wen Agency Admin                                 | Kari Grover-Wier   |
| USFS Oka/Wen Agency Admin (T)                             | Paul Willard   |
| DNR Agency Administrator                                  | Larry Leach  |
| DNR Deputy Agency Administrator                           | Wyatt Leighton   |
| NPS Agency Administrator                                  | Don Striker  |
| NPS Agency Representative                                 | John Goss  |
| NPS FMO   | Matt Ellis   |
| READ Liaison  | Courtney Rowe  |
| 7. Planning Section                                       |  |
| Plans Section Chief                                       | Mike Crawford  |
| Deputy  | Debbie Plummer (T)   |
| Resource Unit   | Gary Duranceau/<br>Cari Richardson   |
| Status Check-in   | Katelyn Roeder / Charlie Hardy   |
| Situation Unit  | Shannon Theall /<br>Ray Moeckel (T)  |
| GIS Specialists   | Aleksandar Dozic / Olivia Hughes (T)   |
| Demob Unit  | Jay Lord   |
| Documentation Unit  | Chris Oelschlager  |
| Incident Meteorologist                                    | Todd Carter  |
| Fire Behavior Analyst                                     | Steve Ziel / Michael Bowden  |
| Long Term Fire Analyst                                    | Brett Smith (Virtual)  |
| 8. Logistics Section                                      |  |
| Logistics Section Chief                                   | Franklin Vaughan / Larry Falcon (T)  |
| Deputy  | Max Yager (Stehekin) / Cindy Wedekind (Lucerne)                                  |
| Facilities  | Jan Robbins / Kelsy Lipp / Peter Drott (T) / Mike Prevost (T) / Randy Rector (T) |

| Base Camp Manager                 | Dave Lefevre/Mac McEntyre (T)   |                                  |
|-----------------------------------|---|----------------------------------|
| Supply Unit                       | Vicki Cunningham  |                                  |
| IT Specialist                     | Mike Gascon / Chad Funnemark / Ben Smith (T)                            |                                  |
| Receiving Distribution            | Michael Hanson / Karl Peterson (T) / David Richards (Stehekin)          |                                  |
| Ordering Manager                  | Noe Reyes   |                                  |
| Ground Support Unit               | Casey Glade / Joe Keady   |                                  |
| Communication Unit                | Seth Baumgartner / Michael Merrick (T)                                  |                                  |
| Communication Tech.               | Keith Schaff / Kevin Judd   |                                  |
| Food Unit                         | Kristy Naughton / John Cody/Phil Moller/Shawna Monroe (T)               |                                  |
| Security Manager                  | Michael Fakier  |                                  |
| Medical Unit                      | Mariann Turley / James Brown / Kevin Smith (T) (Stehekin) / Ben Meacham |                                  |
| 9. Operations Section             |   |                                  |
| OPS Section Chief - Lead          | Jon Larson / Jesse Kiene (T)  |                                  |
| OPS Section Chief - Planning      | Rob Poyner (T)  |                                  |
| OPS Section Chief – Field         | Seth Merritt  |                                  |
| a. Branch I                       |   |                                  |
| Branch Director                   | Thom Taylor   |                                  |
| Division                          | A   | Seth Missal / James Fields (T)   |
| Division                          | Z   | Travis Baker/Frank Heilman (T)   |
| b. Branch II                      |   |                                  |
| Branch Director                   | Thom Taylor   |                                  |
| Division                          | D   | Ben Lippert / Silas Baffa (T)    |
| c. Branch IV                      |   |                                  |
| Branch Director                   | Roger Goldman   |                                  |
| Division                          | H   | Matt Ziegler                     |
| c. Branch V                       |   |                                  |
| Branch Director                   | Alfred Wiehl  |                                  |
| Division                          | S   | Linda Gibson / Holt Jaeger (T)   |
| Division                          | Contingency / Roads   | Jennifer Harris/Eric Metzger (T) |
| Division                          | Boat  | Nate Crawford / Seth Ellis (T)   |
| Division                          | Staging   | Jon Merager                      |
| d. Air Operations Branch          |   |                                  |
| AOB Director – Planning           | Mark Hocken   |                                  |
| AOB Director – Field              | Ted Hass  |                                  |
| 10. Finance Section               |   |                                  |
| Finance Section Chief             | Patty Westgate / Lori Bailey (T)  |                                  |
| Time Unit                         | Beverly Hollars / Heather Wall  |                                  |
| Procurement                       | Audrey Mainwaring   |                                  |
| Comp/Claims                       | Kelly Lorenz (Virtual)  |                                  |
| Cost Unit                         | Dede Domingos   |                                  |
| Prepared by Cari Richardson, RESL |   |                                  |



# Fire Weather Forecast



**FORECAST NO:** 16

**INCIDENT:** Pioneer Fire

**PREDICTION FOR:** 24 Hr Shift

**SHIFT DATE:** Thursday 6/28/2024

**SIGNED:** *Todd Carter*

**TIME AND DATE ISSUED:** 6/27/2024 1900 hrs

Incident Meteorologist (IMET)

**Discussion:**

Weak high pressure will build over the area Friday switching winds from northwest to southeast. Winds will generally be less than 10 mph except for the normal late afternoon evening diurnal northwest surge downlake. It will be drier and warmer Friday but still a potential of sprinkles on highest ridges. A couple of weather systems from the Pacific will increase clouds and potential for light rain showers Saturday into Sunday. It will be a little cooler and breezy Sunday and Monday.

**WEATHER FORECAST FOR TODAY:**

**SKY/WEATHER:** Partly cloudy becoming mostly cloudy.. Cumulus buildup over nearby ridges in the afternoon with sprinkles.

**MAX TEMPERATURE:** 74 to 79.

**MIN RH:** 28 to 35 percent.

**20 FT WINDS:**

**Lower Valleys:** Northwest 5 to 10 mph gusts to 15 mph becoming southeast 5 to 10 mph in the afternoon.

**Mid-slopes and Ridges:** Northwest 5 to 10 mph gusts to 20 mph becoming southeast 5 to 10 gusts to 15 mph in the afternoon.

**HAINES INDEX:** 2 Very Low: Stability-1 & Moisture-1

**TRANSPORT WINDS:** SE 9 mph.

**INVERSION:** 1000 ft inversion starting to lift at 0700 with a max of 5000 ft by 1300.

**TONIGHT:**

**SKY/WEATHER:** Partly cloudy.

**MIN TEMPERATURE:** 51 to 56.

**MAX RH:** 60 to 70 percent.

**20 FT WINDS:**

**Valleys/Lower Slopes:** Becoming Northwest down lake 4 to 7 mph gusts to 15 mph early evening.

**Mid-Slopes and Ridges:** South 5 to 10 mph..

**INVERSION:** Developing after 2100 hrs to near 1000 ft.

**SATURDAY:**

**SKY/WEATHER:** Mostly cloudy with a chance of rain.

**MAX TEMPERATURE:** High 74 to 79.

**MIN RH:** 35 to 43 percent.

**20 FT WINDS:**

**Lower Valleys:** South to Southeast 5 to 10 mph gusts to 15 mph.

**Mid-slopes and Ridges:** Southwest 10 mph gusts to 20 mph.

**HAINES INDEX:** 2 Very Low.

**TRANSPORT WINDS:** S 10 mph.

**Boating concerns Friday:** Southeast winds to 10 mph expected along all of Lake Chelan.

**Aviation concerns Friday:** Warming temperatures above 20C at 4000 feet for load calcs. Winds coming from a different direction.

**Change your weather information Contact INFO:**

Weather observations can now be texted to 509-319-0474 or emailed to [todd.carter@noaa.gov](mailto:todd.carter@noaa.gov)



## Fire Behavior Forecast # 17

|   |  |
|---|--|
| <b>Name of Incident:</b><br><b>Pioneer</b>          | <b>Administrative Unit:</b><br>SE Region DNR / Okanogan-Wenatchee NF |
| <b>Date &amp; Time Issued:</b> June 27, 2024 @ 2000 | <b>Operational Period:</b> <u>DAY</u> 06/28/2024                     |
| <b>FBAN:</b> Steve Ziel                             | <b>Signed:</b> /z/   |

**Assumptions:** *A progressive warming and drying trend will result in increased fire behavior in the coming days. Current fuel conditions will support limited fire spread until sufficient drying occurs. Potential fire behavior is being inhibited by fuel condition and discontinuity. Expect limited burning conditions in exposed fine fuels between 1300-1700. Persistent burning and heat retention in heavy fuels will serve as ignition sources as drying occurs. Live fuels are not contributing to fire spread (yet). Lake effect winds (up or down lake) dominate lower and mid slopes; the fire areas is on a SW aspect with steep side drainages that provide upslope winds. Wind/slope alignment and/or lake wind will influence drying rate and fire spread. Fine fuels will dry rapidly with lower humidity. Expect SW down lake winds today.*

### Weather Summary

\*See attached Fire Weather Forecast

### Fire Behavior Summary

**Fuels in the fire area** are composed of a mosaic of *Timber Litter, Grass, Timber with Understory, and Grass/Shrub* models. The fire is burning in the Rex Creek (2001) fire footprint. Primary tree species include mixed sizes and densities of Douglas Fir and Ponderosa Pine. Local timber litter is compact to fluffy. Brush and understory species include ceanothus, hardwoods, and dog-hair conifer reproduction. Large snags and heavy downed fuel loadings are common throughout all areas. Live woody and herbaceous fuels are seasonally moist, and not contributing to rates of spread; grasses are partially to fully cured. Fuel conditions change by aspect, previous fire history, and soil moisture. Low crown base height (ladder fuels) is present in most of the timbered areas.

**Today's potential fire behavior** may include pockets/areas of smoldering, creeping, and limited spread with wind/slope alignment. Primary spread mechanism has been backing with rollout, flanking, and limited head fire spread. Heavy fuels are retaining heat and will serve as ignition sources as fine fuels dry from wind and low RH during the burn period. Early season fuel condition is inhibiting full fire behavior potential – live fuels are moist, some grasses are still curing. It is important to assess moisture penetration in surface fuels (scuff test) to determine rate of drying.

\* **FFM= 6%-8%, 1000hr. moisture=12%, Woody fuels 170%, Probability of Ignition-40-60%, Max Spotting < 0.2**

| Fuel Type                            | Rate of Spread<br>(CH/HR = FPM) | Flame Length<br>Feet | Backing ROS<br>FPM | 35 MPH Gust – Ridgetop<br>FPM |
|--------------------------------------|---------------------------------|----------------------|--------------------|-------------------------------|
| ...If your work area includes -      |                                 |                      |                    |                               |
| GR2 - Moderate load grass/shrub      | 2 - 3                           | <2                   | < 1                | 2 - 3                         |
| SH2 – Moderate load shrub            | 1 - 2                           | 2                    | < 1                | 5-7                           |
| TU5 - High load Timber w/ Understory | 8 - 9                           | 6-7                  | < 1                | 20-25                         |
| TL8 – Long needle timber litter      | 8 - 9                           | 3-4                  | < 1                | 20-25                         |

### Specific Assignments:

**Div. A** – Expect backing, and limited flanking in headwaters of Meadow Cr. And Cascade Cr. Heavy fuels will continue to consume.

**Div. Z** – Ragged edge fire edge on north side of Prince Cr will continue to smolder, flank, and back with rollout.

**Other Divisions** – Should not be affected by fire activity during the burn period. Monitor smoke direction and amount. Assess fuels.

\***IA** – Ensure good size-up before engaging. Assess fire spread potential based on fuel, weather, topography and values at risk.

**Air Operations:** SE ridgetop wind gusts to 15 mph by afternoon. Monitor ridge top wind transitions, and down lake winds 10 mph.

### Safety

Expect warming and drying to occur over the next several days. Potential fire behavior needs to be anticipated **throughout** the day. Base all actions on current and expected behavior of the fire. Fire season has just started(!!!!) ....we have the whole summer to observe fuel, weather, and topography interactions.

**Subtle changes in the weather pattern today .....Watchout Situation #15 – Wind increases and/or changes direction. #4 – Unfamiliar with weather and local factors influencing fire behavior.**

\*Today's Fire Behavior Forecast contains 670 words written for your situational awareness.

|  |  |                         |   |                                 |                                |                   |         |
|--|--|-------------------------|---|---------------------------------|--------------------------------|-------------------|---------|
| <b>DIVISION ASSIGNMENT LIST</b>  |  |                         | 1. Branch<br><b>I</b>   | 2. Division / Group<br><b>A</b> |                                |                   |         |
| 3. Incident Name<br><b>Pioneer</b>   |  |                         | 4. Operational Period<br>Date: <b>06/28/2024</b> Time: <b>0700-2100</b> |                                 |                                |                   |         |
| 5. Operations Personnel  |  |                         |   |                                 |                                |                   |         |
| Operations Chief   | Jon Larson / Jesse Kiene (T)                   |                         | Division / Group Supervisor   |                                 | Seth Missal / James Fields (T) |                   |         |
| Operations Chief (Plans)   | Rob Poyner (T)                                 |                         | Branch Director   |                                 | Thom Taylor                    |                   |         |
| Safety Officer   | Matt Broyles / Eric Brown                      |                         | Air Attack Supervisor   |                                 | Chad Bergren                   |                   |         |
| 6. Resources Assigned this Period  |  |                         |   |                                 |                                |                   |         |
|  | Strike Team / Task Force / Resource Designator | Leader                  | Number Persons  | Tentative Last Work Day         | Drop Off Pt / Time             | Pick Up Pt / Time |         |
| 1.   | <b>O-179 TFLD</b>                              | <b>Charlie Humbert</b>  | <b>1</b>  | <b>7/9</b>                      |                                |                   |         |
| 2.   | <b>O-180 TFLD</b>                              | <b>Joe Landburg</b>     | <b>1</b>  | <b>7/10</b>                     |                                |                   |         |
| 3.   | <b>O-266 TFLD (T)</b>                          | <b>Frank Bojorquez</b>  | <b>1</b>  | <b>7/12</b>                     |                                |                   |         |
| 4.   |  |                         |   |                                 |                                |                   |         |
| 5.   | <b>C-9 CRW1 Zigzag IHC</b>                     | <b>Sandra Sperry</b>    | <b>25</b>   | <b>6/28</b>                     |                                |                   |         |
| 6.   | <b>**C-13 CRW1 Vale IHC</b>                    | <b>Glen Heitz</b>       | <b>20</b>   | <b>7/4</b>                      |                                |                   |         |
| 7.   | <b>O-187 WFM1 Grass Lake</b>                   | <b>William Johnson</b>  | <b>9</b>  | <b>7/7</b>                      |                                |                   |         |
| 8.   | <b>O-127 FMOD Rainstorm</b>                    | <b>Kendall Cain</b>     | <b>2</b>  | <b>7/1</b>                      |                                |                   |         |
| 9.   | <b>O-128 FMOD Rainstorm</b>                    | <b>Mike Lind</b>        | <b>2</b>  | <b>7/1</b>                      |                                |                   |         |
| 10.  | <b>O-129 FELB</b>                              | <b>Mel Tenneson</b>     | <b>1</b>  | <b>7/1</b>                      |                                |                   |         |
| 11.  |  |                         |   |                                 |                                |                   |         |
| 12.  | <b>O-67 MEDIC 3</b>                            | <b>Adam Lathrop</b>     | <b>1</b>  | <b>7/4</b>                      |                                |                   |         |
| 13.  | <b>O-137 EMT 3</b>                             | <b>James Franklin</b>   | <b>1</b>  | <b>7/1</b>                      |                                |                   |         |
| 14.  | <b>O-153 EMT 2</b>                             | <b>Aiden Noel</b>       | <b>1</b>  | <b>7/1</b>                      |                                |                   |         |
| 15.  |  |                         |   |                                 |                                |                   |         |
| 16.  | <b>O-174.52 SOFR</b>                           | <b>George Libercajt</b> | <b>1</b>  | <b>7/7</b>                      |                                |                   |         |
| 17.  | <b>O-175 SOFR</b>                              | <b>Melissa Moore</b>    | <b>1</b>  | <b>7/4</b>                      |                                |                   |         |
| 18.  |  |                         |   |                                 |                                |                   |         |
| 19.  |  |                         |   |                                 |                                |                   |         |
| 20.  |  |                         |   |                                 |                                |                   |         |
| 7. Control Operations  |  |                         |   |                                 |                                |                   |         |
| <b>Task: Contain fire spread to the northwest where terrain and fuels allow for highest probability of success. Assess fire perimeter progression to the north and west at higher elevations. Implement point protection efforts on federal &amp; private infrastructure.</b>  |  |                         |   |                                 |                                |                   |         |
| <b>Purpose: To slow fire progression, provide time for suppression tactics, and continue to prep around critical values.</b>   |  |                         |   |                                 |                                |                   |         |
| <b>End state: Minimize fire impacts to critical values including private inholdings and Forest Service infrastructure.</b>   |  |                         |   |                                 |                                |                   |         |
| 8. Special Instructions  |  |                         |   |                                 |                                |                   |         |
| <ul style="list-style-type: none"> <li>In large or long term spike camps use helicopters, boats, or pack stock to deliver portable backcountry latrines and remove human waste if necessary. If camp does not have adequate pack, boat, or air support for human waste management, establish community latrines well away from water sources and common areas. Use human waste bags, if necessary.</li> <li>Minimize ground disturbance on the Moore Point and Meadow Creek alluvial fans in order to protect sensitive resources.</li> <li>Ensure hazard mitigations and IWI protocols are in place before taking action.</li> <li>Hose used from Pioneer Creek to Moore Pt: contaminated with invasive plants. Do not reuse. Backhaul to Moore Pt DP22 and store in "infested hose" area at Moore Pt until decontaminated.</li> <li>** Denotes available for Initial Attack</li> </ul> |  |                         |   |                                 |                                |                   |         |
| 9. Division / Group Communication Summary  |  |                         |   |                                 |                                |                   |         |
| Function   | Frequency                                      | System                  | Channel   | Function                        | Frequency                      | System            | Channel |
| Command Repeater   | See Comm Plan                                  |                         |   | Command                         | See Comm. Plan                 |                   |         |
| TAC  |  |                         |   | Air To Ground                   | See Comm. Plan                 |                   |         |
| Prepared by (Resource Unit Leader):<br>Name: Gary Duranceau  |  |                         | Approved by (Planning Section Chief)<br>Name: Mike Crawford             |                                 | Date<br>6/27/24                | Time<br>1900      |         |

|   |  |                         |   |                                 |                                  |                   |              |
|---|--|-------------------------|---|---------------------------------|----------------------------------|-------------------|--------------|
| <b>DIVISION ASSIGNMENT LIST</b>   |  |                         | 1. Branch<br><b>I</b>   | 2. Division / Group<br><b>Z</b> |                                  |                   |              |
| 3. Incident Name<br><b>Pioneer</b>  |  |                         | 4. Operational Period<br>Date: <b>06/28/2024</b> Time: <b>0700-2100</b> |                                 |                                  |                   |              |
| 5. Operations Personnel   |  |                         |   |                                 |                                  |                   |              |
| Operations Chief  | Jon Larson / Jesse Kiene (T)                   |                         | Division / Group Supervisor   |                                 | Travis Baker / Frank Heilman (T) |                   |              |
| Operations Chief (Plans)  | Rob Poyner (T)                                 |                         | Branch Director   |                                 | Thom Taylor                      |                   |              |
| Safety Officer  | Matt Broyles / Eric Brown                      |                         | Air Attack Supervisor   |                                 | Chad Bergren                     |                   |              |
| 6. Resources Assigned this Period   |  |                         |   |                                 |                                  |                   |              |
|   | Strike Team / Task Force / Resource Designator | Leader                  | Number Persons  | Tentative Last Work Day         | Drop Off Pt / Time               | Pick Up Pt / Time |              |
| 1.  | <b>O-177 TFLD</b>                              | <b>Brett Matthews</b>   | <b>1</b>  | <b>7/10</b>                     |                                  |                   |              |
| 2.  |  |                         |   |                                 |                                  |                   |              |
| 3.  | <b>O-182 WFM1 Selway</b>                       | <b>JT Sohr</b>          | <b>14</b>   | <b>7/8</b>                      |                                  |                   |              |
| 4.  |  |                         |   |                                 |                                  |                   |              |
| 5.  | <b>A-78 UR-31</b>                              | <b>Marshal Wallace</b>  | <b>2</b>  | <b>7/9</b>                      |                                  |                   |              |
| 6.  |  |                         |   |                                 |                                  |                   |              |
| 7.  | <b>O-51 MEDIC 1</b>                            | <b>Remington Becker</b> | <b>1</b>  | <b>7/3</b>                      |                                  |                   |              |
| 8.  |  |                         |   |                                 |                                  |                   |              |
| 9.  | <b>O-174.52 SOFR</b>                           | <b>George Libercajt</b> | <b>1</b>  | <b>7/7</b>                      |                                  |                   |              |
| 10.   |  |                         |   |                                 |                                  |                   |              |
| 11.   |  |                         |   |                                 |                                  |                   |              |
| 12.   |  |                         |   |                                 |                                  |                   |              |
| 13.   |  |                         |   |                                 |                                  |                   |              |
| 14.   |  |                         |   |                                 |                                  |                   |              |
| 15.   |  |                         |   |                                 |                                  |                   |              |
| 7. Control Operations   |  |                         |   |                                 |                                  |                   |              |
| <b>Task:</b> Contain fire spread to the southeast where terrain and fuels allow for high probability of success. Assess fire perimeter progression to the east/southeast at higher elevations.  |  |                         |   |                                 |                                  |                   |              |
| <b>Purpose:</b> To slow fire progression, provide time for suppression tactics, and continue to prep around critical values.  |  |                         |   |                                 |                                  |                   |              |
| <b>End state:</b> Minimize fire impacts to critical values including private inholdings and Forest Service infrastructure   |  |                         |   |                                 |                                  |                   |              |
| 8. Special Instructions   |  |                         |   |                                 |                                  |                   |              |
| <ul style="list-style-type: none"> <li>In large or long term spike camps use helicopters, boats, or pack stock to deliver portable backcountry latrines and remove human waste if necessary. If camp does not have adequate pack, boat, or air support for human waste management, establish community latrines well away from water sources and common areas. Use human waste bags, if necessary.</li> <li>Ensure hazard mitigations and IWI protocols are in place before taking action.</li> <li>Hose used from Pioneer Creek to Moore Pt: contaminated with invasive plants. Do not reuse. Backhaul to Moore Pt DP22 and store in "infested hose" area at Moore Pt until decontaminated.</li> </ul> |  |                         |   |                                 |                                  |                   |              |
| 9. Division / Group Communication Summary   |  |                         |   |                                 |                                  |                   |              |
| Function  | Frequency                                      | System                  | Channel   | Function                        | Frequency                        | System            | Channel      |
| Command Repeater  | See Comm Plan                                  |                         |   | Command                         | See Comm. Plan                   |                   |              |
| TAC   |  |                         |   | Air To Ground                   | See Comm. Plan                   |                   |              |
| Prepared by (Resource Unit Leader):<br>Name: Gary Duranceau   |  |                         | Approved by (Planning Section Chief)<br>Name: Mike Crawford             |                                 |                                  | Date<br>6/27/24   | Time<br>1900 |

|  |                           |                              |   |   |                                 |                    |                               |                   |              |  |
|--|---------------------------|------------------------------|---|---|---------------------------------|--------------------|-------------------------------|-------------------|--------------|--|
| <b>DIVISION ASSIGNMENT LIST</b>  |                           |                              | 1. Branch<br><b>II</b>  |   | 2. Division / Group<br><b>D</b> |                    | <b>Page 1 of 2</b>            |                   |              |  |
| 3. Incident Name<br><b>Pioneer</b>   |                           |                              | 4. Operational Period<br>Date: <b>06/28/2024</b> Time: <b>0700-2100</b> |   |                                 |                    |                               |                   |              |  |
| 5. Operations Personnel  |                           |                              |   |   |                                 |                    |                               |                   |              |  |
| Operations Chief   |                           | Jon Larson / Jesse Kiene (T) |   |   | Division / Group Supervisor     |                    | Ben Lippert / Silas Baffa (T) |                   |              |  |
| Operations Chief (Plans)   |                           | Rob Poyner (T)               |   |   | Branch Director                 |                    | Thom Taylor                   |                   |              |  |
| Safety Officer   |                           | Matt Broyles / Eric Brown    |   |   | Air Attack Supervisor           |                    | Chad Bergren                  |                   |              |  |
| 6. Resources Assigned this Period  |                           |                              |   |   |                                 |                    |                               |                   |              |  |
| Strike Team / Task Force / Resource Designator   |                           | Leader                       |   | Number Persons  | Tentative Last Work Day         | Drop Off Pt / Time |                               | Pick Up Pt / Time |              |  |
| 1.   | O-183 TFLD                |                              | Harley Hamman   |   | 1                               | 7/6                | Stehekin                      |                   | Stehekin     |  |
| 2.   | O-251 TFLD                |                              | Aaron Merritt   |   | 1                               | 7/3                | Stehekin                      |                   | Stehekin     |  |
| 3.   |                           |                              |   |   |                                 |                    |                               |                   |              |  |
| 4.   | C-11 CRW1 Redmond IHC     |                              | Dave Varon  |   | 20                              | 6/28               |                               |                   |              |  |
| 5.   |                           |                              |   |   |                                 |                    |                               |                   |              |  |
| 6.   | O-122 HECM                |                              | Nick DePanlo  |   | 4                               | 7/1                | Stehekin                      |                   | Stehekin     |  |
| 7.   |                           |                              |   |   |                                 |                    |                               |                   |              |  |
| 8.   | O-147 SMOD LNP CREW 76    |                              | Sara Martinez   |   | 7                               | 7/3                | Stehekin                      |                   | Stehekin     |  |
| 9.   | O-148 SMOD HVP CREW 1     |                              | Brent Webb  |   | 10                              | 7/3                | Stehekin                      |                   | Stehekin     |  |
| 10.  | O-278 SMOD Crew 84        |                              | Geoff Hibbs   |   | 3                               | 7/10               | Stehekin                      |                   | Stehekin     |  |
| 11.  | **O-218 WFM2 Olympic      |                              | Jonah Gray  |   | 10                              | 7/6                | Stehekin                      |                   | Stehekin     |  |
| 12.  |                           |                              |   |   |                                 |                    |                               |                   |              |  |
| 13.  | O-184 FELB                |                              | Marty Cozart  |   | 1                               | 7/6                | Stehekin                      |                   | Stehekin     |  |
| 14.  | O-186 FMOD Kintner Timber |                              | Cory Kintner  |   | 2                               | 7/6                | Stehekin                      |                   | Stehekin     |  |
| 15.  | O-185 FMOD Brothers Fire  |                              | Levi Merritt  |   | 2                               | 7/6                | Stehekin                      |                   | Stehekin     |  |
| 16.  |                           |                              |   |   |                                 |                    |                               |                   |              |  |
| 17.  |                           |                              |   |   |                                 |                    |                               |                   |              |  |
| 18.  |                           |                              |   |   |                                 |                    |                               |                   |              |  |
| 19.  |                           |                              |   |   |                                 |                    |                               |                   |              |  |
| 7. Control Operations  |                           |                              |   |   |                                 |                    |                               |                   |              |  |
| <b>Task:</b> Continue construction of contingency lines around the community of Stehekin. Look for opportunities to contain fire spread in and around Flick Creek area where terrain and fuels allow for highest probability of success.   |                           |                              |   |   |                                 |                    |                               |                   |              |  |
| <b>Purpose:</b> Minimize fire impacts to critical values including private inholdings, the community of Stehekin, and Forest Service infrastructure.   |                           |                              |   |   |                                 |                    |                               |                   |              |  |
| <b>End state:</b> Critical values including private inholdings, the community of Stehekin, and Forest Service infrastructure are not impacted by the Pioneer fire, while minimizing fire impacts and acres burned utilizing historic wildfire control features and natural barriers.   |                           |                              |   |   |                                 |                    |                               |                   |              |  |
| 8. Special Instructions  |                           |                              |   |   |                                 |                    |                               |                   |              |  |
| <ul style="list-style-type: none"> <li>In large or long term spike camps use helicopters, boats, or pack stock to deliver portable backcountry latrines and remove human waste if necessary. If camp does not have adequate pack, boat, or air support for human waste management, establish community latrines well away from water sources and common areas. Use human waste bags, if necessary.</li> <li>All operational personnel working on USFS lands will need to conduct a thorough inspection for invasive species seeds on boots including laces, clothing, and gear prior to entering NPS lands.</li> <li>Only fresh (direct from the cache) hose should be utilized on NPS lands to prevent the transport of invasive species seeds.</li> <li>Hose used on USFS lands should not be used on NPS lands and hose used on NPS lands should not be used on USFS lands to prevent the spread of invasives species seeds.</li> <li>Cargo loads being transported onto NPS lands should be inspected for invasive weed seed prior to flight.</li> <li>Ensure hazard mitigations and IWI protocols are in place before taking action.</li> <li>NPS Resource Avoidance Area Flagging is yellow with red polka dots. Contact NPS READs before working in areas where this flagging is present.</li> <li>** Denotes available for Initial Attack</li> </ul> |                           |                              |   |   |                                 |                    |                               |                   |              |  |
| 9. Division / Group Communication Summary  |                           |                              |   |   |                                 |                    |                               |                   |              |  |
| Function   | Frequency                 | System                       |   | Channel   | Function                        | Frequency          | System                        |                   | Channel      |  |
| Command Repeater   | See Comm Plan             |                              |   |   | Command                         | See Comm. Plan     |                               |                   |              |  |
| TAC  |                           |                              |   |   | Air To Ground                   | See Comm. Plan     |                               |                   |              |  |
| Prepared by (Resource Unit Leader):<br>Name: Gary Duranceau  |                           |                              |   | Approved by (Planning Section Chief)<br>Name: Mike Crawford |                                 |                    | Date<br>6/27/24               |                   | Time<br>1900 |  |



|   |  |   |   |                               |                    |                   |              |
|---|--|---|---|-------------------------------|--------------------|-------------------|--------------|
| <b>DIVISION ASSIGNMENT LIST</b>   |  | 1. Branch<br><b>II</b>  | 2. Division / Group<br><b>D</b>                             | <b>Page 2 of 2</b>            |                    |                   |              |
| 3. Incident Name<br><b>Pioneer</b>  |  | 4. Operational Period<br>Date: <b>06/28/2024</b> Time: <b>0700-2100</b> |   |                               |                    |                   |              |
| 5. Operations Personnel   |  |   |   |                               |                    |                   |              |
| Operations Chief  | Jon Larson / Jesse Kiene (T)                   |   | Division / Group Supervisor                                 | Ben Lippert / Silas Baffa (T) |                    |                   |              |
| Operations Chief (Plans)  | Rob Poyner (T)                                 |   | Branch Director   | Thom Taylor                   |                    |                   |              |
| Safety Officer  | Matt Broyles / Eric Brown                      |   | Air Attack Supervisor                                       | Chad Bergren                  |                    |                   |              |
| 6. Resources Assigned this Period   |  |   |   |                               |                    |                   |              |
|   | Strike Team / Task Force / Resource Designator | Leader  | Number Persons  | Tentative Last Work Day       | Drop Off Pt / Time | Pick Up Pt / Time |              |
| 20.   | <b>O-125 READ</b>                              | <b>Cedar Drake</b>  | <b>1</b>  | <b>7/1</b>                    | <b>Stehekin</b>    | <b>Stehekin</b>   |              |
| 21.   | <b>O-166 REAF</b>                              | <b>Jordan Spaak</b>   | <b>1</b>  | <b>7/6</b>                    | <b>Stehekin</b>    | <b>Stehekin</b>   |              |
| 22.   | <b>O-235 REAF</b>                              | <b>Cade Simpson</b>   | <b>1</b>  | <b>7/7</b>                    | <b>Stehekin</b>    | <b>Stehekin</b>   |              |
| 23.   | <b>O-167 ARCH</b>                              | <b>Jason Wright</b>   | <b>1</b>  | <b>7/5</b>                    | <b>Stehekin</b>    | <b>Stehekin</b>   |              |
| 24.   | <b>O-168 ARCH</b>                              | <b>Ernest Wingate</b>   | <b>1</b>  | <b>7/6</b>                    | <b>Stehekin</b>    | <b>Stehekin</b>   |              |
| 25.   |  |   |   |                               |                    |                   |              |
| 26.   | <b>O-165 REMS 2</b>                            | <b>Brayden Kirk</b>   | <b>4</b>  | <b>7/10</b>                   | <b>Stehekin</b>    | <b>Stehekin</b>   |              |
| 27.   | <b>O-174.79 MEDL (T)</b>                       | <b>Kevin Smith</b>  | <b>1</b>  | <b>7/2</b>                    | <b>Stehekin</b>    | <b>Stehekin</b>   |              |
| 28.   |  |   |   |                               |                    |                   |              |
| 29.   | <b>O-170 THSP</b>                              | <b>Tanya Neider</b>   | <b>1</b>  | <b>7/3</b>                    |                    |                   |              |
| 30.   |  |   |   |                               |                    |                   |              |
| 31.   | <b>O-142 SOF2</b>                              | <b>Kelly Jensen</b>   | <b>1</b>  | <b>7/1</b>                    |                    |                   |              |
| 32.   | <b>O-174.88 SOFR</b>                           | <b>Leo Engleson</b>   | <b>1</b>  | <b>7/7</b>                    | <b>Stehekin</b>    | <b>Stehekin</b>   |              |
| 33.   |  |   |   |                               |                    |                   |              |
| 34.   | <b>E-119 Driver</b>                            | <b>Stephen Bouche</b>   | <b>1</b>  | <b>7/2</b>                    |                    |                   |              |
| 35.   |  |   |   |                               |                    |                   |              |
| 36.   |  |   |   |                               |                    |                   |              |
| 37.   |  |   |   |                               |                    |                   |              |
| 38.   |  |   |   |                               |                    |                   |              |
| 7. Control Operations   |  |   |   |                               |                    |                   |              |
| <b>Task:</b> Continue construction of contingency lines around the community of Stehekin. Look for opportunities to contain fire spread in and around Flick Creek area where terrain and fuels allow for highest probability of success.  |  |   |   |                               |                    |                   |              |
| <b>Purpose:</b> Minimize fire impacts to critical values including private inholdings, the community of Stehekin, and Forest Service infrastructure.  |  |   |   |                               |                    |                   |              |
| <b>End state:</b> Critical values including private inholdings, the community of Stehekin, and Forest Service infrastructure are not impacted by the Pioneer fire, while minimizing fire impacts and acres burned utilizing historic wildfire control features and natural barriers.  |  |   |   |                               |                    |                   |              |
| 8. Special Instructions   |  |   |   |                               |                    |                   |              |
| <ul style="list-style-type: none"> <li>In large or long term spike camps use helicopters, boats, or pack stock to deliver portable backcountry latrines and remove human waste if necessary. If camp does not have adequate pack, boat, or air support for human waste management, establish community latrines well away from water sources and common areas. Use human waste bags, if necessary.</li> <li>All operational personnel working on USFS lands will need to conduct a thorough inspection for invasive species seeds on boots including laces, clothing, and gear prior to entering NPS lands.</li> <li>Only fresh (direct from the cache) hose should be utilized on NPS lands to prevent the transport of invasive species seeds.</li> <li>Hose used on USFS lands should not be used on NPS lands and hose used on NPS lands should not be used on USFS lands to prevent the spread of invasives species seeds.</li> <li>Cargo loads being transported onto NPS lands should be inspected for invasive weed seed prior to flight.</li> <li>Ensure hazard mitigations and IWI protocols are in place before taking action.</li> <li>NPS Resource Avoidance Area Flagging is yellow with red polka dots. Contact NPS READs before working in areas where this flagging is present.</li> <li>** Denotes available for Initial Attack.</li> </ul> |  |   |   |                               |                    |                   |              |
| 9. Division / Group Communication Summary   |  |   |   |                               |                    |                   |              |
| Function  | Frequency                                      | System  | Channel   | Function                      | Frequency          | System            | Channel      |
| Command Repeater  | See Comm Plan                                  |   |   | Command                       | See Comm. Plan     |                   |              |
| TAC   |  |   |   | Air To Ground                 | See Comm. Plan     |                   |              |
| Prepared by (Resource Unit Leader):<br>Name: Gary Duranceau   |  |   | Approved by (Planning Section Chief)<br>Name: Mike Crawford |                               |                    | Date<br>6/27/24   | Time<br>1900 |

|  |  |   |   |                         |                    |                   |         |
|--|--|---|---|-------------------------|--------------------|-------------------|---------|
| <b>DIVISION ASSIGNMENT LIST</b>  |  | 1. Branch<br><b>IV</b>  | 2. Division / Group<br><b>H</b>                             |                         |                    |                   |         |
| 3. Incident Name<br><b>Pioneer</b>   |  | 4. Operational Period<br>Date: <b>06/28/2024</b> Time: <b>0700-2100</b> |   |                         |                    |                   |         |
| 5. Operations Personnel  |  |   |   |                         |                    |                   |         |
| Operations Chief   | Jon Larson / Jesse Kiene (T)                   |   | Division / Group Supervisor                                 | Matt Ziegler            |                    |                   |         |
| Operations Chief (Plans)   | Rob Poyner (T)                                 |   | Branch Director   | Roger Goldman           |                    |                   |         |
| Safety Officer   | Matt Broyles / Eric Brown                      |   | Air Attack Supervisor                                       | Chad Bergren            |                    |                   |         |
| 6. Resources Assigned this Period  |  |   |   |                         |                    |                   |         |
|  | Strike Team / Task Force / Resource Designator | Leader  | Number Persons  | Tentative Last Work Day | Drop Off Pt / Time | Pick Up Pt / Time |         |
| 1.   | <b>O-272 TFLD</b>                              | <b>Steve Abrams</b>   | <b>1</b>  | <b>7/11</b>             |                    |                   |         |
| 2.   |  |   |   |                         |                    |                   |         |
| 3.   | <b>O-267 SOFR</b>                              | <b>Tom Talbot</b>   | <b>1</b>  | <b>7/10</b>             |                    |                   |         |
| 4.   |  |   |   |                         |                    |                   |         |
| 5.   |  |   |   |                         |                    |                   |         |
| 6.   |  |   |   |                         |                    |                   |         |
| 7.   |  |   |   |                         |                    |                   |         |
| 8.   |  |   |   |                         |                    |                   |         |
| 9.   |  |   |   |                         |                    |                   |         |
| 10.  |  |   |   |                         |                    |                   |         |
| 11.  |  |   |   |                         |                    |                   |         |
| 12.  |  |   |   |                         |                    |                   |         |
| 13.  |  |   |   |                         |                    |                   |         |
| 14.  |  |   |   |                         |                    |                   |         |
| 15.  |  |   |   |                         |                    |                   |         |
| 16.  |  |   |   |                         |                    |                   |         |
| 17.  |  |   |   |                         |                    |                   |         |
| 18.  |  |   |   |                         |                    |                   |         |
| 19.  |  |   |   |                         |                    |                   |         |
| 20.  |  |   |   |                         |                    |                   |         |
| 7. Control Operations<br><b>Task:</b> Complete a comprehensive inventory of critical values, proposed control line options to protect those values and the risk to responders associated with those actions in SA4.<br><b>Purpose:</b> To analyze the strategy as probability vs success.<br><b>End state:</b> A long term durable strategic plan for the Pioneer Fire.  |  |   |   |                         |                    |                   |         |
| 8. Special Instructions  |  |   |   |                         |                    |                   |         |
| <ul style="list-style-type: none"> <li>In large or long term spike camps use helicopters, boats, or pack stock to deliver portable backcountry latrines and remove human waste if necessary. If camp does not have adequate pack, boat, or air support for human waste management, establish community latrines well away from water sources and common areas. Use human waste bags, if necessary.</li> <li>Ensure hazard mitigations and IWI protocols are in place before taking action.</li> <li>Draft sites must be reviewed by READ.</li> </ul> |  |   |   |                         |                    |                   |         |
| 9. Division / Group Communication Summary  |  |   |   |                         |                    |                   |         |
| Function   | Frequency                                      | System  | Channel   | Function                | Frequency          | System            | Channel |
| Command Repeater   | See Comm Plan                                  |   |   | Command                 | See Comm. Plan     |                   |         |
| TAC  |  |   |   | Air To Ground           | See Comm. Plan     |                   |         |
| Prepared by (Resource Unit Leader):<br>Name: Gary Duranceau  |  |   | Approved by (Planning Section Chief)<br>Name: Mike Crawford |                         | Date<br>6/27/24    | Time<br>1900      |         |

|  |  |                              |   |   |                                 |                                |                    |                   |  |
|--|--|------------------------------|---|---|---------------------------------|--------------------------------|--------------------|-------------------|--|
| <b>DIVISION ASSIGNMENT LIST</b>  |  |                              | 1. Branch<br><b>V</b>   |   | 2. Division / Group<br><b>S</b> |                                | <b>Page 1 of 2</b> |                   |  |
| 3. Incident Name<br><b>Pioneer</b>   |  |                              | 4. Operational Period<br>Date: <b>06/28/2024</b> Time: <b>0700-2100</b> |   |                                 |                                |                    |                   |  |
| 5. Operations Personnel  |  |                              |   |   |                                 |                                |                    |                   |  |
| Operations Chief   |  | Jon Larson / Jesse Kiene (T) |   | Division / Group Supervisor                                 |                                 | Linda Gibson / Holt Jaeger (T) |                    |                   |  |
| Operations Chief (Plans)   |  | Rob Poyner (T)               |   | Branch Director   |                                 | Alfred Wiehl                   |                    |                   |  |
| Safety Officer   |  | Matt Broyles / Eric Brown    |   | Air Attack Supervisor                                       |                                 | Chad Bergren                   |                    |                   |  |
| 6. Resources Assigned this Period  |  |                              |   |   |                                 |                                |                    |                   |  |
|  | Strike Team / Task Force / Resource Designator |                              | Leader  | Number Persons  | Tentative Last Work Day         | Drop Off Pt / Time             |                    | Pick Up Pt / Time |  |
| 1.   | O-110 TFLD                                     |                              | Shane Clifton   | 1   | 6/30                            | Safe Harbor                    |                    | Safe Harbor       |  |
| 2.   | O-111 TFLD (T)                                 |                              | Lars Olson  | 1   | 6/30                            | Camp 4 Spike                   |                    | Camp 4 Spike      |  |
| 3.   | O-112 TFLD                                     |                              | David Ortlund   | 1   | 7/1                             | Camp 4 Spike                   |                    | Camp 4 Spike      |  |
| 4.   | O-113 TFLD (T)                                 |                              | Gavin Young   | 1   | 7/1                             | Camp 4 Spike                   |                    | Camp 4 Spike      |  |
| 5.   | O-126 FMOD Fire Contracting Serv.              |                              | Ethan Wilson  | 2   | 7/1                             | Camp 4 Spike                   |                    | Camp 4 Spike      |  |
| 6.   | O-130 FELB                                     |                              | Rob Winkler   | 1   | 7/2                             | Camp 4 Spike                   |                    | Camp 4 Spike      |  |
| 7.   |  |                              |   |   |                                 |                                |                    |                   |  |
| 8.   | **C-10 CR2I Methow Valley IA                   |                              | Benjamin Boucher  | 23  | 6/29                            | Safe Harbor                    |                    | Safe Harbor       |  |
| 9.   | **C-18 CR2I Colville                           |                              | Jacob Morse   | 21  | 7/6                             | Camp 4 Spike                   |                    | Camp 4 Spike      |  |
| 10.  |  |                              |   |   |                                 |                                |                    |                   |  |
| 11.  | E-78 WTS2 King Hydroseeding                    |                              | Don Warden  | 1   | 7/10                            | Camp 4 Spike                   |                    | Camp 4 Spike      |  |
| 12.  |  |                              |   |   |                                 |                                |                    |                   |  |
| 13.  | E-101 SKG2 NW Diesel Dudes                     |                              | John Lotze  | 2   | 7/3                             | Camp 4 Spike                   |                    | Camp 4 Spike      |  |
| 14.  | E-102 SKG2 Dukes Equipment                     |                              | Justin Durston  | 2   | 7/1                             | ICP                            |                    | ICP               |  |
| 15.  | E-103 MBM2 Marcon Timber                       |                              | Dave Landes   | 2   | 7/1                             | ICP                            |                    | ICP               |  |
| 16.  | E-104 MBM2 Havillah Logging                    |                              | Albert Johnson  | 2   | 7/1                             | ICP                            |                    | ICP               |  |
| 17.  | E-105 MBM2 Justin Pitts                        |                              | Justin Pitts  | 2   | 7/1                             | ICP                            |                    | ICP               |  |
| 18.  |  |                              |   |   |                                 |                                |                    |                   |  |
| 19.  | E-118 ENG6 Little Pend Oreille                 |                              | Thomas Boggs  | 3   | 7/1                             | Camp 4 Spike                   |                    | Camp 4 Spike      |  |
| 20.  | E-118 HEQB                                     |                              | Dillon Bigler   | 1   | 7/1                             | Camp 4 Spike                   |                    | Camp 4 Spike      |  |
| 21.  | E-118 HEQB (T)                                 |                              | Pedro Gomez   | 1   | 7/1                             | Camp 4 Spike                   |                    | Camp 4 Spike      |  |
| 22.  |  |                              |   |   |                                 |                                |                    |                   |  |
| 23.  |  |                              |   |   |                                 |                                |                    |                   |  |
| 7. Control Operations<br><b>Task:</b> Implementation of control from South Navaree CG to Lake Chelan. Increase ingress and egress to the fire area.<br><b>Purpose:</b> To establish a barrier to fire to the east of Safety Harbor Creek.<br><b>End state:</b> Control line anchored from South Navaree CG to Lake Chelan. |  |                              |   |   |                                 |                                |                    |                   |  |
| 8. Special Instructions<br>Ensure hazard mitigations and IWI protocols are in place before taking action.<br>** Denotes available for Initial Attack   |  |                              |   |   |                                 |                                |                    |                   |  |
| 9. Division / Group Communication Summary  |  |                              |   |   |                                 |                                |                    |                   |  |
| Function   | Frequency                                      | System                       |   | Channel   | Function                        | Frequency                      | System             | Channel           |  |
| Command Repeater   | See Comm Plan                                  |                              |   |   | Command                         | See Comm. Plan                 |                    |                   |  |
| TAC  |  |                              |   |   | Air To Ground                   | See Comm. Plan                 |                    |                   |  |
| Prepared by (Resource Unit Leader):<br>Name: Gary Duranceau  |  |                              |   | Approved by (Planning Section Chief)<br>Name: Mike Crawford |                                 |                                | Date<br>6/27/24    | Time<br>1900      |  |

|  |  |   |   |                                |                     |                     |         |
|--|--|---|---|--------------------------------|---------------------|---------------------|---------|
| <b>DIVISION ASSIGNMENT LIST</b>  |  | 1. Branch<br><b>V</b>   | 2. Division / Group<br><b>S</b>                             | <b>Page 2 of 2</b>             |                     |                     |         |
| 3. Incident Name<br><b>Pioneer</b>   |  | 4. Operational Period<br>Date: <b>06/28/2024</b> Time: <b>0700-2100</b> |   |                                |                     |                     |         |
| 5. Operations Personnel  |  |   |   |                                |                     |                     |         |
| Operations Chief   | Jon Larson / Jesse Kiene (T)                   |   | Division / Group Supervisor                                 | Linda Gibson / Holt Jaeger (T) |                     |                     |         |
| Operations Chief (Plans)   | Rob Poyner (T)                                 |   | Branch Director   | Alfred Wiehl                   |                     |                     |         |
| Safety Officer   | Matt Broyles / Eric Brown                      |   | Air Attack Supervisor                                       | Chad Bergren                   |                     |                     |         |
| 6. Resources Assigned this Period  |  |   |   |                                |                     |                     |         |
|  | Strike Team / Task Force / Resource Designator | Leader  | Number Persons  | Tentative Last Work Day        | Drop Off Pt / Time  | Pick Up Pt / Time   |         |
| 24.  | <b>O-75 MEDIC 4</b>                            | <b>Nathan Etherington</b>   | <b>1</b>  | <b>6/28</b>                    | <b>Safe Harbor</b>  | <b>Safe Harbor</b>  |         |
| 25.  | <b>O-43 REMS1</b>                              | <b>Ray Storm</b>  | <b>5</b>  | <b>7/8</b>                     | <b>Camp 4 Spike</b> | <b>Camp 4 Spike</b> |         |
| 26.  |  |   |   |                                |                     |                     |         |
| 27.  | <b>O-141 SOFR</b>                              | <b>Kevin Pfister</b>  | <b>1</b>  | <b>7/2</b>                     | <b>Camp 4 Spike</b> | <b>Camp 4 Spike</b> |         |
| 28.  |  |   |   |                                |                     |                     |         |
| 29.  | <b>E-18 UTV</b>                                |   |   |                                |                     |                     |         |
| 30.  | <b>E-93 UTV</b>                                |   |   |                                |                     |                     |         |
| 31.  | <b>E-94 UTV</b>                                |   |   |                                |                     |                     |         |
| 32.  | <b>E-148 UTV</b>                               |   |   |                                |                     |                     |         |
| 33.  | <b>E-149 UTV</b>                               |   |   |                                |                     |                     |         |
| 34.  |  |   |   |                                |                     |                     |         |
| 35.  |  |   |   |                                |                     |                     |         |
| 36.  |  |   |   |                                |                     |                     |         |
| 37.  |  |   |   |                                |                     |                     |         |
| 38.  |  |   |   |                                |                     |                     |         |
| 39.  |  |   |   |                                |                     |                     |         |
| 40.  |  |   |   |                                |                     |                     |         |
| 41.  |  |   |   |                                |                     |                     |         |
| 42.  |  |   |   |                                |                     |                     |         |
| 43.  |  |   |   |                                |                     |                     |         |
| 44.  |  |   |   |                                |                     |                     |         |
| 45.  |  |   |   |                                |                     |                     |         |
| 46.  |  |   |   |                                |                     |                     |         |
| 47.  |  |   |   |                                |                     |                     |         |
| 48.  |  |   |   |                                |                     |                     |         |
| 7. Control Operations<br><b>Task:</b> Implementation of control from South Navaree CG to Lake Chelan. Increase ingress and egress to the fire area.<br><b>Purpose:</b> To establish a barrier to fire to the east of Safety Harbor Creek.<br><b>End state:</b> Control line anchored from South Navaree CG to Lake Chelan. |  |   |   |                                |                     |                     |         |
| 8. Special Instructions<br>Ensure hazard mitigations and IWI protocols are in place before taking action.<br>** Denotes available for Initial Attack   |  |   |   |                                |                     |                     |         |
| 9. Division / Group Communication Summary  |  |   |   |                                |                     |                     |         |
| Function   | Frequency                                      | System  | Channel   | Function                       | Frequency           | System              | Channel |
| Command Repeater   | See Comm Plan                                  |   |   | Command                        | See Comm. Plan      |                     |         |
| TAC  |  |   |   | Air To Ground                  | See Comm. Plan      |                     |         |
| Prepared by (Resource Unit Leader):<br>Name: Gary Duranceau  |  |   | Approved by (Planning Section Chief)<br>Name: Mike Crawford |                                | Date<br>6/27/24     | Time<br>1900        |         |

|  |  |   |  |                                    |                    |                   |
|--|--|---|--|------------------------------------|--------------------|-------------------|
| <b>DIVISION ASSIGNMENT LIST</b>  |  | 1. Branch<br><b>V</b>   | 2. Division / Group<br><b>Contingency/Roads</b>              |                                    | <b>Page 1 of 2</b> |                   |
| 3. Incident Name<br><b>Pioneer</b>   |  | 4. Operational Period<br>Date: <b>06/28/2024</b> Time: <b>0700-2100</b> |  |                                    |                    |                   |
| 5. Operations Personnel  |  |   |  |                                    |                    |                   |
| Operations Chief   | Jon Larson / Jesse Kiene (T)                   |   | Division / Group Supervisor                                  | Jennifer Harris / Eric Metzger (T) |                    |                   |
| Operations Chief (Plans)   | Rob Poyner (T)                                 |   | Branch Director  | Alfred Wiehl                       |                    |                   |
| Safety Officer   | Matt Broyles / Eric Brown                      |   | Air Attack Supervisor  | Chad Bergren                       |                    |                   |
| 6. Resources Assigned this Period  |  |   |  |                                    |                    |                   |
|  | Strike Team / Task Force / Resource Designator | Leader  | Number Persons   | Tentative Last Work Day            | Drop Off Pt / Time | Pick Up Pt / Time |
| 1.   | O-83 TFLD                                      | Mark Lewis  | 1  | 6/29                               |                    |                   |
| 2.   | O-106 TFLD                                     | Andy Hall   | 1  | 6/29                               |                    |                   |
| 3.   | O-178 TFLD                                     | Andrew Schaffran  | 1  | 7/9                                |                    |                   |
| 4.   | **O-239 TFLD                                   | Kory Garrie   | 1  | 7/9                                |                    |                   |
| 5.   | O-245 TFLD                                     | Noah Daniels  | 1  | 7/10                               |                    |                   |
| 6.   | O-114 TFLD (T)                                 | TJ Whitehall  | 1  | 7/1                                |                    |                   |
| 7.   | O-249 TFLD (T)                                 | Mark Harper   | 1  | 7/9                                |                    |                   |
| 8.   | **O-257 TFLD (T)                               | Craig McDonald  | 1  | 7/9                                |                    |                   |
| 9.   | O-115 HEQB                                     | Garrett Hanson  | 1  | 6/30                               |                    |                   |
| 10.  | O-241 HEQB                                     | Jason Green   | 1  | 7/9                                |                    |                   |
| 11.  | O-242 HEQB                                     | Travis Parker   | 1  | 7/9                                |                    |                   |
| 12.  | O-243 HEQB                                     | Everardo Santillan  | 1  | 7/8                                |                    |                   |
| 13.  | O-116 HEQB (T)                                 | Tyler Meyer   | 1  | 6/30                               |                    |                   |
| 14.  | O-117 HEQB (T)                                 | Ian Fox   | 1  | 6/30                               |                    |                   |
| 15.  |  |   |  |                                    |                    |                   |
| 16.  | **C-19 CR2I Cle Elum RD                        | Cris Machado  | 18   | 7/8                                |                    |                   |
| 17.  | C-23 C2IA SRV1                                 | Jaime Medrano   | 23   | 7/11                               |                    |                   |
| 18.  |  |   |  |                                    |                    |                   |
| 19.  | **E-117 ENG6 Wenatchee River                   | Nicholas Gonzales   | 5  | 7/3                                |                    |                   |
| 20.  |  |   |  |                                    |                    |                   |
| 21.  | E-74 WTS2 MVP Team                             | Joe Cole  | 1  | 6/28                               |                    |                   |
| 22.  | E-75 WTS2 David Rains                          | Ron Laymance  | 1  | 6/30                               |                    |                   |
| 23.  | E-83 WTS2 King Hydroseeding                    | Cosmo Fisher  | 1  | 6/28                               |                    |                   |
| 24.  | E-76 WTS2 Mountain View Wildfire               | Wick Fife   | 1  | 7/1                                |                    |                   |
| 25.  | E-156 WTS2 King Hydroseeding                   | Wes Bodenhamer  | 1  | 7/8                                |                    |                   |
| 26.  |  |   |  |                                    |                    |                   |
| 7. Control Operations<br><b>Task:</b> Scout proposed control lines at Oss Peak and Johnson Creek. Assess structures from Deer Point to Mitchel Creek. Implement control lines from H41 to DP50.<br><b>Purpose:</b> To protect critical values at risk.<br><b>End state:</b> To have established control lines in place that correspond to Pioneer Fire strategic plan. |  |   |  |                                    |                    |                   |
| 8. Special Instructions <ul style="list-style-type: none"> <li>• Ensure hazard mitigations and IWI protocols are in place before taking action.</li> <li>• Contingency resources working DIV H: Draft sites must be reviewed by READ.</li> <li>• ** Denotes available for Initial Attack.</li> </ul>   |  |   |  |                                    |                    |                   |
| 9. Division / Group Communication Summary  |  |   |  |                                    |                    |                   |
| Function   | Frequency                                      | System  | Channel  | Function                           | Frequency          | System            |
| Command Repeater   | See Comm Plan                                  |   |  | Command                            | See Comm. Plan     |                   |
| TAC  |  |   |  | Air To Ground                      | See Comm. Plan     |                   |
| Prepared by (Resource Unit Leader):<br>Name: Gary Duranceau  |  |   | Approved by (Planning Section Chief):<br>Name: Mike Crawford |                                    | Date:<br>6/27/24   | Time:<br>1900     |

|   |  |   |   |                                    |                    |                   |
|---|--|---|---|------------------------------------|--------------------|-------------------|
| <b>DIVISION ASSIGNMENT LIST</b>   |  | 1. Branch<br><b>V</b>   | 2. Division / Group<br><b>Contingency/Roads</b>             |                                    | <b>Page 2 of 2</b> |                   |
| 3. Incident Name<br><b>Pioneer</b>  |  | 4. Operational Period<br>Date: <b>06/28/2024</b> Time: <b>0700-2100</b> |   |                                    |                    |                   |
| 5. Operations Personnel   |  |   |   |                                    |                    |                   |
| Operations Chief  | Jon Larson / Jesse Kiene (T)                   |   | Division / Group Supervisor                                 | Jennifer Harris / Eric Metzger (T) |                    |                   |
| Operations Chief (Plans)  | Rob Poyner (T)                                 |   | Branch Director   | Alfred Wiehl                       |                    |                   |
| Safety Officer  | Matt Broyles / Eric Brown                      |   | Air Attack Supervisor                                       | Chad Bergren                       |                    |                   |
| 6. Resources Assigned this Period   |  |   |   |                                    |                    |                   |
|   | Strike Team / Task Force / Resource Designator | Leader  | Number Persons  | Tentative Last Work Day            | Drop Off Pt / Time | Pick Up Pt / Time |
| 27.   | E-157 WTS2 Pine Mountain Exc.                  | Bob Goss  | 1   | 7/8                                |                    |                   |
| 28.   | E-172 WTS2 Upper Valley                        | Joseph Schoenmakers   | 1   | 7/12                               |                    |                   |
| 29.   | E-174 WTS2 Upper Valley                        | Jim Smith   | 1   | 7/12                               |                    |                   |
| 30.   | E-154 SKG2 Western                             | Rick Lauman   | 2   | 7/8                                |                    |                   |
| 31.   | E-155 SKG2 Mountain View                       | Shawn Beaman  | 2   | 7/8                                |                    |                   |
| 32.   |  |   |   |                                    |                    |                   |
| 33.   | E-92 DZR3 Batchelor Excavation                 | Jay Batchelor   | 2   | 6/28                               | Camp 4 Spike       | Camp 4 Spike      |
| 34.   | E-100 DZR4 Douglas Logging                     | Steve Douglas   | 2   | 7/1                                |                    |                   |
| 35.   | E-143 EXC2 Delange Enterprises                 | Pete Delange  | 2   | 7/5                                |                    |                   |
| 36.   | E-71 GRD2 Scotts Excavating                    | Mark Rowe   | 2   | 7/4                                |                    |                   |
| 37.   | E-72 GRD2 Scotts Excavating                    | Jim Kitterman   | 2   | 7/13                               |                    |                   |
| 38.   | E-69 FTRA Morris Forestry                      | Jake Wilcox   | 1   | 7/7                                |                    |                   |
| 39.   | E-151 MBM2 Dukes                               | Chris Boles   | 2   | 7/8                                |                    |                   |
| 40.   | E-152 MBM2 Axsus                               | John Cisneros   | 2   | 7/10                               |                    |                   |
| 41.   |  |   |   |                                    |                    |                   |
| 42.   | O-68 MEDIC 2                                   | Joel Bower  | 1   | 7/3                                |                    |                   |
| 43.   | O-76 MEDIC 5                                   | Brian Linacre   | 1   | 7/7                                |                    |                   |
| 44.   | O-271 EMPF                                     | Steve Drab  | 1   | 7/11                               |                    |                   |
| 45.   |  |   |   |                                    |                    |                   |
| 46.   | O-189 SOF2                                     | John Nickey   | 1   | 7/1                                |                    |                   |
| 47.   |  |   |   |                                    |                    |                   |
| 48.   | E-19 UTV                                       |   |   |                                    |                    |                   |
| 49.   | E-44 UTV                                       |   |   |                                    |                    |                   |
| 50.   |  |   |   |                                    |                    |                   |
| 51.   |  |   |   |                                    |                    |                   |
| 7. Control Operations   |  |   |   |                                    |                    |                   |
| <b>Task:</b> Scout proposed control lines at Oss Peak and Johnson Creek. Assess structures from Deer Point to Mitchel Creek. Implement control lines from H41 to DP50.  |  |   |   |                                    |                    |                   |
| <b>Purpose:</b> To protect critical values at risk.   |  |   |   |                                    |                    |                   |
| <b>End state:</b> To have established control lines in place that correspond to Pioneer Fire strategic plan.  |  |   |   |                                    |                    |                   |
| 8. Special Instructions   |  |   |   |                                    |                    |                   |
| <ul style="list-style-type: none"> <li>• Ensure hazard mitigations and IWI protocols are in place before taking action.</li> <li>• Contingency resources working DIV H: Draft sites must be reviewed by READ.</li> <li>• ** Denotes available for Initial Attack</li> </ul> |  |   |   |                                    |                    |                   |
| 9. Division / Group Communication Summary   |  |   |   |                                    |                    |                   |
| Function  | Frequency                                      | System  | Channel   | Function                           | Frequency          | System            |
| Command Repeater  | See Comm Plan                                  |   |   | Command                            | See Comm. Plan     |                   |
| TAC   |  |   |   | Air To Ground                      | See Comm. Plan     |                   |
| Prepared by (Resource Unit Leader):<br>Name: Gary Duranceau   |  |   | Approved by (Planning Section Chief)<br>Name: Mike Crawford |                                    | Date<br>6/27/24    | Time<br>1900      |



|  |  |   |   |                         |                    |                   |         |
|--|--|---|---|-------------------------|--------------------|-------------------|---------|
| <b>DIVISION ASSIGNMENT LIST</b>  |  | 1. Branch<br><b>V</b>   | 2. Division / Group<br><b>Staging</b>                       |                         |                    |                   |         |
| 3. Incident Name<br><b>Pioneer</b>   |  | 4. Operational Period<br>Date: <b>06/28/2024</b> Time: <b>0700-2100</b> |   |                         |                    |                   |         |
| 5. Operations Personnel  |  |   |   |                         |                    |                   |         |
| Operations Chief   | Jon Larson / Jesse Kiene (T)                   |   | Division / Group Supervisor                                 | Jon Merager             |                    |                   |         |
| Operations Chief (Plans)   | Rob Poyner (T)                                 |   | Branch Director   | Alfred Wiehl            |                    |                   |         |
| Safety Officer   | Matt Broyles / Eric Brown                      |   | Air Attack Supervisor                                       | Chad Bergren            |                    |                   |         |
| 6. Resources Assigned this Period  |  |   |   |                         |                    |                   |         |
|  | Strike Team / Task Force / Resource Designator | Leader  | Number Persons  | Tentative Last Work Day | Drop Off Pt / Time | Pick Up Pt / Time |         |
| 1.   | <b>E-153 FEL1 Dukes</b>                        | <b>Nick Marley</b>  | <b>2</b>  | <b>7/8</b>              |                    |                   |         |
| 2.   |  |   |   |                         |                    |                   |         |
| 3.   |  |   |   |                         |                    |                   |         |
| 4.   |  |   |   |                         |                    |                   |         |
| 5.   |  |   |   |                         |                    |                   |         |
| 6.   |  |   |   |                         |                    |                   |         |
| 7.   |  |   |   |                         |                    |                   |         |
| 8.   |  |   |   |                         |                    |                   |         |
| 9.   |  |   |   |                         |                    |                   |         |
| 10.  |  |   |   |                         |                    |                   |         |
| 11.  |  |   |   |                         |                    |                   |         |
| 12.  |  |   |   |                         |                    |                   |         |
| 13.  |  |   |   |                         |                    |                   |         |
| 14.  |  |   |   |                         |                    |                   |         |
| 15.  |  |   |   |                         |                    |                   |         |
| 16.  |  |   |   |                         |                    |                   |         |
| 17.  |  |   |   |                         |                    |                   |         |
| 18.  |  |   |   |                         |                    |                   |         |
| 19.  |  |   |   |                         |                    |                   |         |
| 20.  |  |   |   |                         |                    |                   |         |
| 7. Control Operations<br><b>Task:</b> Remain ready and available for divisions as needed.<br><b>Purpose:</b> To assist divisions as needed to complete missions as appropriate.<br><b>End state:</b> Support suppression efforts as needed to project communities. |  |   |   |                         |                    |                   |         |
| 8. Special Instructions  |  |   |   |                         |                    |                   |         |
| 9. Division / Group Communication Summary  |  |   |   |                         |                    |                   |         |
| Function   | Frequency                                      | System  | Channel   | Function                | Frequency          | System            | Channel |
| Command Repeater   | See Comm Plan                                  |   |   | Command                 | See Comm. Plan     |                   |         |
| TAC  |  |   |   | Air To Ground           | See Comm. Plan     |                   |         |
| Prepared by (Resource Unit Leader):<br>Name: Gary Duranceau  |  |   | Approved by (Planning Section Chief)<br>Name: Mike Crawford |                         | Date<br>6/27/24    | Time<br>1900      |         |

|   |  |                              |   |                             |                                    |                                |                   |
|---|--|------------------------------|---|-----------------------------|------------------------------------|--------------------------------|-------------------|
| <b>DIVISION ASSIGNMENT LIST</b>   |  |                              | 1. Branch   |                             | 2. Division / Group<br><b>BOAT</b> |                                |                   |
| 3. Incident Name<br><b>Pioneer</b>  |  |                              | 4. Operational Period<br>Date: <b>06/28/2024</b> Time: <b>0700-2100</b> |                             |                                    |                                |                   |
| 5. Operations Personnel   |  |                              |   |                             |                                    |                                |                   |
| Operations Chief  |  | Jon Larson / Jesse Kiene (T) |   | Division / Group Supervisor |                                    | Nate Crawford / Seth Ellis (T) |                   |
| Operations Chief (Plans)  |  | Rob Poyner (T)               |   | Branch Director             |                                    |                                |                   |
| Safety Officer  |  | Matt Broyles / Eric Brown    |   | Air Attack Supervisor       |                                    | Chad Bergren                   |                   |
| 6. Resources Assigned this Period   |  |                              |   |                             |                                    |                                |                   |
|   | Strike Team / Task Force / Resource Designator |                              | Leader  | Number Persons              | Tentative Last Work Day            | Drop Off Pt / Time             | Pick Up Pt / Time |
| 1.  | <b>O-161 TFLD Boat Coordinator</b>             |                              | <b>Cameron Chambers</b>   | <b>1</b>                    | <b>7/3</b>                         | <b>Lucerne</b>                 | <b>Lucerne</b>    |
| 2.  | <b>O-50 TFLD</b>                               |                              | <b>Todd Olson</b>   | <b>1</b>                    | <b>6/30</b>                        | <b>Lucerne</b>                 | <b>Lucerne</b>    |
| 3.  | <b>O-160 TFLD</b>                              |                              | <b>Brian Turner</b>   | <b>1</b>                    | <b>7/3</b>                         | <b>ICP</b>                     | <b>ICP</b>        |
| 4.  | <b>O-248 TFLD (T)</b>                          |                              | <b>Jason Ward</b>   | <b>1</b>                    | <b>7/9</b>                         | <b>Lucerne</b>                 | <b>Lucerne</b>    |
| 5.  | <b>O-263 TFLD (T)</b>                          |                              | <b>Aaron Pedersen</b>   | <b>1</b>                    | <b>7/12</b>                        |                                |                   |
| 6.  | <b>O-162 HEQB</b>                              |                              | <b>Nicolas Glatt</b>  | <b>1</b>                    | <b>7/3</b>                         | <b>Lucerne</b>                 | <b>Lucerne</b>    |
| 7.  | <b>O-163 HEQB (T)</b>                          |                              | <b>Emma Ahlrichs</b>  | <b>1</b>                    | <b>7/3</b>                         | <b>Lucerne</b>                 | <b>Lucerne</b>    |
| 8.  |  |                              |   |                             |                                    |                                |                   |
| 9.  | <b>E-1 TBOT WA-NCP NPS</b>                     |                              | <b>Sonja Shaw</b>   | <b>1</b>                    |                                    | <b>Stehekin</b>                | <b>Stehekin</b>   |
| 10.   | <b>E-3 TBOT Chelan Co. F&amp;R#7</b>           |                              | <b>Brandon Asher</b>  | <b>2</b>                    |                                    | <b>Lucerne</b>                 | <b>Lucerne</b>    |
| 11.   | <b>E-12 TBOT WA-OWF Chelan RD</b>              |                              | <b>Dick Gordon</b>  | <b>1</b>                    |                                    | <b>FS Dock</b>                 | <b>FS Dock</b>    |
| 12.   | <b>E-91 TBOT DNR Mud Puppy</b>                 |                              | <b>Curt Hekkila</b>   | <b>1</b>                    |                                    | <b>Lucerne</b>                 | <b>Lucerne</b>    |
| 13.   | <b>E-98 TBOT Chelan County Sheriffs</b>        |                              | <b>Rich Magnussen</b>   | <b>1</b>                    |                                    | <b>FS Dock</b>                 | <b>FS Dock</b>    |
| 14.   | <b>E-43 TBOT Llama Boat</b>                    |                              | <b>Gayle Thomas</b>   | <b>1</b>                    |                                    | <b>FS Dock</b>                 | <b>FS Dock</b>    |
| 15.   | <b>E-120 TBOT Pilgram</b>                      |                              | <b>Justin Gavin</b>   | <b>1</b>                    | <b>7/11</b>                        |                                |                   |
| 16.   |  |                              |   |                             |                                    |                                |                   |
| 17.   | <b>O-136 MEDIC 6</b>                           |                              | <b>Steve Medina</b>   | <b>1</b>                    | <b>7/8</b>                         | <b>Lucerne</b>                 | <b>Lucerne</b>    |
| 18.   | <b>O-152 EMT 1</b>                             |                              | <b>Ivan Huld</b>  | <b>1</b>                    | <b>7/1</b>                         | <b>Lucerne</b>                 | <b>Lucerne</b>    |
| 19.   |  |                              |   |                             |                                    |                                |                   |
| 20.   |  |                              |   |                             |                                    |                                |                   |
| 21.   |  |                              |   |                             |                                    |                                |                   |
| 22.   |  |                              |   |                             |                                    |                                |                   |
| 23.   |  |                              |   |                             |                                    |                                |                   |
| 24.   |  |                              |   |                             |                                    |                                |                   |
| 7. Control Operations   |  |                              |   |                             |                                    |                                |                   |
| <b>Task:</b> Contain fire spread to the southwest where terrain and fuels allow for high probability of success. Assess fire perimeter progression to the west/southwest at higher elevations.  |  |                              |   |                             |                                    |                                |                   |
| <b>Purpose:</b> To slow fire progression, provide time for suppression tactics, and prep around critical values.  |  |                              |   |                             |                                    |                                |                   |
| <b>End state:</b> Minimize fire impacts to critical values including private inholdings and Forest Service infrastructure   |  |                              |   |                             |                                    |                                |                   |
| 8. Special Instructions   |  |                              |   |                             |                                    |                                |                   |
| <ul style="list-style-type: none"> <li>In large or long-term spike camps use helicopters, boats, or pack stock to deliver portable backcountry latrines and remove human waste if necessary. If camp does not have adequate pack, boat, or air support for human waste management, establish community latrines well away from water sources and common areas. Use human waste bags, if necessary.</li> <li>Ensure hazard mitigations and IWI protocols are in place before taking action.</li> </ul> |  |                              |   |                             |                                    |                                |                   |
| 9. Division / Group Communication Summary   |  |                              |   |                             |                                    |                                |                   |
| Function  | Frequency                                      | System                       | Channel   | Function                    | Frequency                          | System                         | Channel           |
| Command Repeater  | See Comm Plan                                  |                              |   | Command                     | See Comm. Plan                     |                                |                   |
| TAC   |  |                              |   | Air To Ground               | See Comm. Plan                     |                                |                   |
| Prepared by (Resource Unit Leader):<br>Name: Gary Duranceau   |  |                              | Approved by (Planning Section Chief)<br>Name: Mike Crawford             |                             |                                    | Date<br>6/27/24                | Time<br>1900      |

## AIR OPERATIONS SUMMARY ICS-220

|   |                         |                        |                       |                         |   |  |                                       |
|---|-------------------------|------------------------|-----------------------|-------------------------|---|--|---------------------------------------|
| <b>Incident Name / Number</b><br>Pioneer / WA-SES-000173  | <b>Sunrise</b><br>05:04 | <b>Sunset</b><br>21:03 | <b>Airport</b><br>S10 | <b>Pumpkin</b><br>21:33 | <b>Time Prepared</b><br>18:00<br><b>Shutdown</b><br>21:00 | <b>Date Prepared</b><br>6/27/2024<br><b>Operational Period - Date</b><br>6/28/2024 | <b>Prepared By</b><br>Mark Hocken AOB |
| <b>General Remarks, Safety Notes, Hazards, Air Operations Special Equipment, etc.</b>   |                         |                        |                       |                         |   |  |                                       |
| <p>*Order All Aircraft through Command to Helibase.<br/>                 *Sanitize Buckets before changing water sources.<br/>                 *Clear drop area/line before initiating drop sequence.<br/>                 *Be cognizant of all overhead and environmental hazards while working with Aircraft.<br/>                 *All GPS is to be collected in DMM<br/>                 *** WINDS: return to helibase if winds become unmanageable.</p> <p>*Aviation daily cost to: 2024.pioneer.finance@firenet.gov<br/>                 *Aviation daily cost to: pioneerhelibase2024@gmail.com</p> |                         |                        |                       |                         |   |  |                                       |

| Incident Frequencies       | RX       | Tone | TX                              | Tone | AM/FM |
|----------------------------|----------|------|---------------------------------|------|-------|
| Air to Air Primary (A-8)   | 123.4000 |      | 123.4000                        |      | AM    |
| Air to Air Secondary (A-9) | 118.2750 |      | 118.2750                        |      | AM    |
| A/G Pri Tactical (A-10)    | 169.1500 |      | 169.1500                        |      | FM    |
| A/G Sec Operational (A-11) | 168.4000 |      | 168.4000                        |      | FM    |
| TOLC                       | 166.6125 |      | 166.6125                        |      | FM    |
| DECK                       | 163.1000 |      | 163.1000                        |      | FM    |
| COMMAND                    |          |      | See ICS 205 Communications Plan |      |       |
| <b>Short Haul NC 5CL</b>   |          |      |                                 |      |       |
| UAS                        |          |      |                                 |      |       |
| <b>AIR GUARD</b>           |          |      |                                 |      |       |
| 168.6250                   |          |      |                                 |      |       |
| 110.9 FM                   |          |      |                                 |      |       |
| <b>VMED 29</b>             |          |      |                                 |      |       |
| 155.3475                   |          |      |                                 |      |       |
| 156.7 FM                   |          |      |                                 |      |       |

| HELICOPTERS - Assigned |      |            |           |       |       |                            |  |
|------------------------|------|------------|-----------|-------|-------|----------------------------|--|
| FAA #                  | TYPE | Make/Model | Helibase  | Start | Avail | Remarks                    |  |
| HB-16FH (A-22)         | 1    | UH-60      | Valley    | 0800  | 0900  | BKT/LL                     |  |
| HB-161KA (A-24)        | 1    | K-1200     | Valley    | 0800  | 0900  | BKT/LL                     |  |
| H-407RL (A-1)          | 3    | 407        | Chelan    | 0800  | 0900  | **Unavailable**            |  |
| H-684H (A-46)          | 3    | 407        | Chelan    | 0800  | 0900  | BKT/LL/Recon/HLCO          |  |
| H-544AS (A-60)         | 3    | AS350B3    | Chelan    | 0800  | 0900  | HLCO/Recon                 |  |
| H-125CL                | 3    | AS350B3e   | Wenatchee | 0800  | 0900  | Short haul, Recon in route |  |

| HELICOPTERS - GACC Prepo |      |            |         |       |       |  |  |
|--------------------------|------|------------|---------|-------|-------|--|--|
| FAA #                    | TYPE | Make/Model | Airport | Start | Avail | Remarks                                      |  |
| H-205TK                  | 2    | Bell 205A  | Chelan  | 0800  | 0900  | BKT/LL call CWICC                            |  |
| HB-344RA (A-45)          | 1    | CH-47D     | Valley  | 0800  | 0900  | BKT/LL lend/lease to Wenatchee CWICC IA Fire |  |

| FIXED WING AA/HLCO |      |            |         |           |       |       |                             |
|--------------------|------|------------|---------|-----------|-------|-------|-----------------------------|
| Call Sign          | Type | Make/Model | Base    | Call Sign | Start | Avail | Remarks                     |
| UR-31              | 3    | AltaX      | Lucerne | 610       | 0600  | 2200  | IR/PSD                      |
|                    |      |            |         | 4AS       | 0800  |       | Assigned HLCO               |
|                    |      |            |         | 617       | 0900  |       | Wenatchee IA (not assigned) |

**EQUIPMENT/SUPPLIES**

|                      |       |
|----------------------|-------|
| Com (Chelan) Trailer | E-20  |
| Hand Wash Station    | E-47  |
| Water Tender         | E-77  |
| Water Tender         | E-14  |
| Com (Valley) Trailer | E-150 |
| Water Tender Valley  | E-158 |

**Mediac Ship Information**

Medvac ship N-684H  
 2 EMTs, Litter Kit  
 call helibase to launch  
 Make/Model 407  
 Location: Chelan  
**Request Procedure for This Aircraft:**  
 Communications on Command,  
**Short-Haul North Cascade N-125CL**  
 Order through Helibase/CWICC,  
 CWICC (509) 884-3473 x 2  
 40 min to 1 hour response on to 2100

# INCIDENT RADIO COMMUNICATIONS PLAN (ICS 205)

## Controlled Unclassified Information//Basic

| 1. Incident Name:  |      | 2. Date/Time Prepared:         |                            | 3. Operational Period:   |          |             |          |             |                   |                            |
|--|------|--------------------------------|----------------------------|--|----------|-------------|----------|-------------|-------------------|----------------------------|
| <b>PIONEER</b>   |      | Date: 06/27/2024<br>Time: 1600 |                            | Date/Time From: 06/28/2024 0600<br>Date/Time To: 06/29/2024 0600 |          |             |          |             |                   |                            |
| <b>4. Basic Radio Channel Use:</b>   |      |                                |                            |  |          |             |          |             |                   |                            |
| Zone Group   | Ch # | Function                       | Channel Name/Trunked Radio | Assignment   | RX Freq  | RX Tone/NAC | TX Freq  | TX Tone/NAC | Mode (A, D, or M) | Remarks                    |
|  | 1    | TACTICAL                       | TAC 1                      | DIV A & S  | 168.0500 | 123.0       | 168.0500 | 123.0       | A                 |                            |
|  | 2    | TACTICAL                       | TAC 2                      | DIV D  | 168.2000 | 123.0       | 168.2000 | 123.0       | A                 |                            |
|  | 3    | TACTICAL                       | TAC 3                      | DIV Z  | 168.6000 | 123.0       | 168.6000 | 123.0       | A                 |                            |
|  | 4    | TACTICAL                       | TAC 4                      | DIV H / CONT   | 166.7250 | 123.0       | 166.7250 | 123.0       | A                 |                            |
|  | 5    | TACTICAL                       | TAC 5                      | ROADS  | 166.7750 | 123.0       | 166.7750 | 123.0       | A                 |                            |
|  | 6    | TACTICAL                       | TAC 6                      | BOAT   | 168.2500 | 123.0       | 168.2500 | 123.0       | A                 |                            |
|  | 7    | COMMAND                        | CMD 7                      | ALL  | 168.4750 | 123.0       | 165.4000 | 123.0       | A                 | CHELAN BUTTE               |
|  | 8    | COMMAND                        | CMD 8                      | ALL  | 169.5375 | 123.0       | 164.7125 | 123.0       | A                 | OLD MAID MT                |
|  | 9    | COMMAND                        | CMD 9                      | ALL  | 170.4500 | 123.0       | 168.1000 | 123.0       | A                 | MOORE MT                   |
|  | 10   | COMMAND                        | CMD 10                     | ALL  | 170.0125 | 123.0       | 165.2500 | 123.0       | A                 | SLIDE RIDGE                |
|  | 11   | COMMAND                        | CMD 11                     | ALL  | 170.4125 | 123.0       | 165.9625 | 123.0       | A                 | FOX PEAK                   |
|  | 12   | TACTICAL                       | A/G PRI                    | ALL DIVS   | 169.1500 | 000.0       | 169.1500 | 000.0       | A                 |                            |
|  | 13   | AIR TO GROUND                  | A/G SEC                    | ALL DIVS   | 168.4000 | 000.0       | 168.4000 | 000.0       | A                 |                            |
|  | 14   | AIR TO GROUND                  | A/G 3                      | ALL DIVS   | 166.6125 | 000.0       | 166.6125 | 000.0       | A                 | TAKE OFF LANDING CHANNEL   |
|  | 15   | AIR TO GROUND                  | VMED 29                    | ALL DIVS   | 155.3475 | 156.7       | 155.3475 | 156.7       | A                 | AIR EMS COORDINATION       |
|  | 16   | AIR TO GROUND                  | AIRGUARD                   | ALL DIVS   | 168.6250 | 000.0       | 168.6250 | 110.9       | A                 | EMERGENCY AIRCRAFT CONTACT |
| <b>5. Special Instructions: 24 hour staffing: PIONEER COMMUNICATIONS PHONE NUMBER: (208) 891-7948 / CURRENT CLONE "PIE 6-21"</b> |      |                                |                            |  |          |             |          |             |                   |                            |
| <b>6. Prepared By COML</b>   |      |                                |                            |  |          |             |          |             |                   |                            |
| Name: SETH BAUMGARTEN  |      |                                |                            |  |          |             |          |             |                   |                            |
| Signature: <i>Seth Baumgarten</i>  |      |                                |                            |  |          |             |          |             |                   |                            |
| ICS 205  |      |                                |                            |  |          |             |          |             |                   |                            |
| IAP Page   |      |                                |                            |  |          |             |          |             |                   |                            |
| Date/Time: 6/27/24 1600  |      |                                |                            |  |          |             |          |             |                   |                            |

# INCIDENT RADIO COMMUNICATIONS PLAN (ICS 205)

## Controlled Unclassified Information//Basic

| 1. Incident Name:  |      | 2. Date/Time Prepared:         |                            | 3. Operational Period:          |                               |             |          |             |                   |                            |
|--|------|--------------------------------|----------------------------|---------------------------------|-------------------------------|-------------|----------|-------------|-------------------|----------------------------|
| <b>PIONEER</b><br><b>Branch IV &amp; V</b>   |      | Date: 06/27/2024<br>Time: 1600 |                            | Date/Time From: 06/28/2024 0600 | Date/Time To: 06/29/2024 0600 |             |          |             |                   |                            |
| <b>4. Basic Radio Channel Use:</b>   |      |                                |                            |                                 |                               |             |          |             |                   |                            |
| Zone Group   | Ch # | Function                       | Channel Name/Trunked Radio | Assignment                      | RX Freq                       | RX Tone/NAC | TX Freq  | TX Tone/NAC | Mode (A, D, or M) | Remarks                    |
|  | 1    | TACTICAL                       | TAC 1                      | DIV A & S                       | 168.0500                      | 123.0       | 168.0500 | 123.0       | A                 |                            |
|  | 2    | TACTICAL                       | TAC 2                      | DIV D                           | 168.2000                      | 123.0       | 168.2000 | 123.0       | A                 |                            |
|  | 3    | TACTICAL                       | TAC 3                      | DIV Z                           | 168.6000                      | 123.0       | 168.6000 | 123.0       | A                 |                            |
|  | 4    | TACTICAL                       | TAC 4                      | DIV H / CONT                    | 166.7250                      | 123.0       | 166.7250 | 123.0       | A                 |                            |
|  | 5    | TACTICAL                       | TAC 5                      | ROADS                           | 166.7750                      | 123.0       | 166.7750 | 123.0       | A                 |                            |
|  | 6    | TACTICAL                       | TAC 6                      | BOAT                            | 168.2500                      | 123.0       | 168.2500 | 123.0       | A                 |                            |
|  | 7    | TACTICAL                       | A/G PRI                    | ALL DIVS                        | 169.1500                      | 000.0       | 169.1500 | 000.0       | A                 |                            |
|  | 8    | AIR TO GROUND                  | A/G SEC                    | ALL DIVS                        | 168.4000                      | 000.0       | 168.4000 | 000.0       | A                 |                            |
|  | 9    | AIR TO GROUND                  | A/G 3                      | ALL DIVS                        | 166.6125                      | 000.0       | 166.6125 | 000.0       | A                 |                            |
|  | 10   | COMMAND                        | CMD 10                     | ALL                             | 170.0125                      | 123.0       | 165.2500 | 123.0       | A                 | SLIDE RIDGE                |
|  | 11   | COMMAND                        | CMD 11                     | ALL                             | 170.4125                      | 123.0       | 165.9625 | 123.0       | A                 | FOX PEAK                   |
|  | 12   | COMMAND                        | CMD 12                     | ALL                             | 170.6875                      | 123.0       | 166.575  | 123.0       | A                 | GOAT MOUNTAIN              |
|  | 13   | LOCAL RPTR                     | GOAT                       | ALL                             | 172.3500                      | 146.2       | 165.0125 | 118.8       | A                 | GOAT MOUNTAIN              |
|  | 14   | LOCAL RPTR                     | MCLUR                      | ALL                             | 172.3500                      | 146.2       | 165.0125 | 103.5       | A                 | McCLURE MTN                |
|  | 15   | AIR TO GROUND                  | VMED 29                    | ALL DIVS                        | 155.3475                      | 156.7       | 155.3475 | 156.7       | A                 | AIR EMS COORDINATION       |
|  | 16   | AIR TO GROUND                  | AIRGUARD                   | ALL DIVS                        | 168.6250                      | 000.0       | 168.6250 | 110.9       | A                 | EMERGENCY AIRCRAFT CONTACT |
| <b>5. Special Instructions: 24 hour staffing: PIONEER COMMUNICATIONS PHONE NUMBER: (208) 891-7948 / CURRENT CLONE "IV"</b> |      |                                |                            |                                 |                               |             |          |             |                   |                            |
| <b>6. Prepared By COML</b>   |      |                                |                            |                                 |                               |             |          |             |                   |                            |
| Name: SETH BAUMGARTEN  |      |                                |                            |                                 |                               |             |          |             |                   |                            |
| Signature: <i>Seth Baumgarten</i>  |      |                                |                            |                                 |                               |             |          |             |                   |                            |
| ICS 205  |      |                                |                            |                                 |                               |             |          |             |                   |                            |
| IAP Page   |      |                                |                            |                                 |                               |             |          |             |                   |                            |
| Date/Time: 6/27/24 1600  |      |                                |                            |                                 |                               |             |          |             |                   |                            |



*PIONEER FIRE SAFETY MESSAGE*

*JUNE 28, 2024*

**Ready to Respond**

The Pioneer Fire has presented every person on the fireline with many challenges regarding health and safety. First, great work and great safety record; let's keep it up! A process is in place to get the help you need if and when a medical emergency takes place. I'm talking about the Medical Plan (ICS 206WF), also known as the 8 line or MIR. (Consider it the 911 system for us) Our communications unit is available 24/7 and can be reached on the command frequencies. The 24-hour phone number for Communications is: **208-891-7948**

**WHAT:**

- Any accident or injury where a medical evaluation is requested. This is where the colors come in. (Green, Yellow, Red)

**WHEN:**

- 24/7 (Please hear this!)

**HOW:**

- Ok, stop reading this now, turn to the last page in your IAP and you will find the 206WF. Go ahead, look it over, I can wait...

**PRACTICE MAKES PERFECT:**

- Take some time to practice a medical scenario utilizing the process. Get together with your Safety Officers to facilitate.
- Leaders: Take lead on this, demonstrate and lead by example.
- Crew members: Now it is your turn to give it a try. (Don't worry about making mistakes or being nervous, this is a process and you will get better)
- Medic Teams: Pull out your gear and give a "show me" tour to the troops.

**LEADER'S INTENT:**

The intent of this plan is to get the help you need and establish command and control of an emergency situation as quickly as possible by identifying responsibilities and procedures.

Make good decisions!

Your NW-7 Safety Officers: Eric Brown / Matt Broyles



**Pioneer Fire**  
**Human Resource Message**

June 28, 2024

**Mutual Respect**

**It's hot!**

What we don't need is a hot head. It's time in the incident to remind everyone about mutual respect.

Please be patient and courteous. We work better when we are.

Remember, danger is only one letter away from anger.

**Breaks**

Breaks are an important component of our workday. They help us to stay focused, maintain positive attitudes, and ensure a safe work environment. Breaks also serve as opportunities to build or recharge crew and/or team morale.

Be cool and have a safe shift. Kindness is the new cool!

Margaret Dietrich, HR Specialist  
Cell 360-701-3154

## FINANCE MESSAGE

**Finance Email:** [2024.pioneer.finance@firenet.gov](mailto:2024.pioneer.finance@firenet.gov)

**Finance Phone:** 484-501-1835

**This incident requires electronic documentation.** Please email your time to the address above. Scanned PDF's please, no .JPG's. Feel free to call finance for help if needed. Scanners are also available at ICP.

### Required Documents

| Overhead, Agency Crews & Cooperators   | Contract Resources  |
|--|---|
| <p><b>Finance docs needed:</b> Resource Order, Manifest, Cooperative Agreement, Casual Hire Form w/ECI# (as applicable)</p> <p><b>Daily:</b> CTRs, Shift Tickets</p> <p><b>CTRs should be named as:</b><br/>CTR_RO#_YYMMDD-DD<br/>(Ex: CTR_O235_240605-07)</p> <p>Electronic CTR available! Use QR code on front cover</p> | <p><b>Finance docs needed:</b> Resource Order, Manifest, Full Contract/Agreement, Certifications (<i>if required</i>) Pre-Inspection</p> <p><b>Daily:</b> CTRs, Shift Tickets, receipts (claims, etc.)<br/><b>NOTE: Document travel times and odometer readings</b></p> <p><b>Shift Tickets should be named as:</b><br/>ST_RO#_YYMMDD-DD<br/>(Ex: ST_E5_240623-27)</p> <p>Electronic shift ticket available! Use QR code on front cover</p> |
| <p><b>Demob:</b> Signed OF-288; Signed OF-286</p>  | <p><b>Demob:</b> Contractor Evaluations, Shift Tickets, receipt(s) for Addition/Deductions, Post-Inspection, Signed OF-286</p>  |
| <p><b>"H-Pay"- Entitlement to Hazardous Pay Differential (5 CFR 550.904) - Hazard pay MUST be supported by a justification. If justification is not provided, you chance losing your entitlement.</b></p>  | <p><b>Please call finance regarding issues with your time:</b></p> <p>No one on List today, <b>any questions for Finance, please email us. Tomorrow we will have a phone number for Team 7 Finance Thank You.</b></p>   |

Incident Name: **Pioneer**

Incident Number: **WA-SES-000173**

Financial codes:

WA DNR – **221-LDW**

DOI – **RZ79**

USDA – **PNRZ79 (1522)**

**Please make sure you check in using QR code on the front of the IAP and then email your time daily.**

**THANK YOU!!**

## Resource Advice

Lead READ: Brigitte Ranne 509-663-6118, [brigitte.ranne@usda.gov](mailto:brigitte.ranne@usda.gov)

REAF: Hector Rodriguez 509-393-5379, [Hector.Rodriguez3@usda.gov](mailto:Hector.Rodriguez3@usda.gov)

REAF: Eireann Pederson 360-854-8197, [eireann.pederson@usda.gov](mailto:eireann.pederson@usda.gov)

REAF: Carrissa Camenson 360-899-7147, [carissa.camenson@usda.gov](mailto:carissa.camenson@usda.gov)



Resource Guidelines

### *MIST for Spike Camp and Lucerne Forward Operating Base Management*

- Employ minimum impact suppression tactics (MIST) where feasible, especially in remote or sensitive areas.
- If spike camps are necessary, use existing, or previously impacted campsites where available. If existing campsites are not available; use your local resource advisor to help identify the most resilient sites in rocky or sandy soils. Avoid camping in wet meadows, along streams, or on lake shores.
- Store food properly so that it is not accessible to wildlife. Consider hanging food in trees at least 15 feet off the ground and 5 feet from the trunk of the tree, or store food in sealable containers. Store food away from the campsite (300 feet is ideal) to reduce the risk of human and bear (and rodent!) conflicts.
- Do not let garbage and food scraps accumulate in camp. All garbage and food scraps need to be removed from the camp ASAP and before leaving the site.
- Minimize disturbance to land in preparing bedding and campfire sites. Do not clear vegetation, trench, or excavate a flat spot to create bedding sites.
- **Do not use nails in trees. Don't** construct camp furniture.
- If a campfire is built for warmth in the evening, build either a pit or mound fire. Use dead and down firewood. Use small diameter wood that burns down more cleanly. Don't burn plastics or aluminum - pack it out with the rest of the camp garbage.
- In small spike camp situations (not Lucerne), individuals should use the "cat-hole" method of disposing of human waste. Toilet seats should be located a minimum of 200 feet from water sources. Holes should be dug 6-8 inches deep.
- In large or long term spike the camps use helicopters, boats, or pack stock to deliver portable backcountry latrines and remove human waste if necessary. If the camp does not have adequate pack, boat, or air support for human waste management, establish community latrines well away from water sources and common areas. Use human waste bags, if necessary

### *Dipping and Drafting*

- No cross-dipping between water bodies. All buckets or snorkels should be cleaned, inspected, and dried in the sun if they must be used between lakes. Dipping in small lakes must be pre-approved by the READ or AA.
- When drafting, use already disturbed areas for stream access (road crossings, dispersed campsites) to reduce the need for riparian vegetation clearing.
- Use screens (3/32" **inch**) for all pumping operations.
- Use containment pads and basins under pumps and fuel cans. Ensure a spill kit is present with every operating pump.

### *Invasive Species*

- The fire is burning within an infestation of common crupina, a WA State Class A Noxious weed. Prevent spread of crupina off site – plan to wash hose and other equipment. Request fire fighters brush boots before boarding boat or before entering National Park Service Land.
- Inspect slings and remove all plant/soil material prior to use.
- Ensure all camps, staging areas, helispots and cargo areas are free of invasive plants to prevent spread to un-infested areas.
- Weed wash all vehicles, including boats, when they arrive to the incident and when demobed.

#### *Fisheries /Aquatic Recommendations*

- If trees must be felled in riparian areas for suppression or safety reasons, fell them toward streams where possible and minimize bucking where possible.
- Non-mechanized suppression activities are recommended within Riparian Reserves (150-300 ft from stream channel). For example, consider hand lines instead of dozer lines when feasible.

#### *Retardant Use*

- Retardant avoidance areas are present in the fire suppression area for both aquatic and terrestrial species.
- Track all retardant drops – locations and amounts.
- Report all mis-applications ASAP to READ. Monitoring and reporting of misapplications is required.

#### *Wet Meadows*

- No line or other disturbance in wet meadows in the Summer Blossom area (east of South Navarre campground above and below the 8200 road) and at Coyote and Poison Springs at the headwaters of their respective creeks.

#### *Dry Meadows*

- Minimize disturbance from staging and parking areas in dry meadows. These areas recovery slowly and are vulnerable to invasive plant infestation.

#### *White Bark Pine*

- Avoid cutting white bark pine whenever possible. Needles of 5 keep it alive! Ask READ for help with ID.

#### *Burnout operations*

- Plan to protect whitebark pine of all ages and mature cold and moist forest during burnouts. READ consultation and line officer approval is required for burn plans that include these forest types.
- During burnouts modify firing to retain large trees, large snags and large down wood in forests whenever possible.
- Minimize total acres burned in burnouts.
- Incorporate typical resource protection measures used in RX burning whenever it is safe and practical to do so (such as retention of green islands in moist areas).
- Provide a map of areas that were burned as part of the burnout operation (for use in emergency consultation).
- If cultural resources are discovered during suppression activities, leave on site and notify READ.

# LOGISTICS NOTES

---

## Pioneer Fire ICP

Breakfast 0530 – 0900

Lunch @ Refer Trailer – 0500 - 2100

Dinner 1800 -2100

Shower 0500 – 1200 & 1400 – 2200

Supply 0600 – 2200

Ground Support 0700 – 2100

Fuel Tender 0700 – 2100

Weed Wash 0700 – 1400 & 1600 – 2000

## FOB Lucerne

Breakfast 0600 - 0900

Lunch – Pickup with Breakfast

Dinner 2030 – 2130

Shower 0500 – 1200 & 1400 – 2200

Supply 0600 – 2200

Ground Support Contact Numbers:

Casey Glade 435-704-4702, Joe Keady 541-733-6701

## Ordering Information

Submit all orders on General Message Form 213 to the following email address;

[2024.pioneer.ordering@firenet.gov](mailto:2024.pioneer.ordering@firenet.gov)

Ordering Manager Noe Reyes 208-416-3715

# Example GM (ICS213) for Boat Transportation

**\*\* WHEN ARRANGING BOAT TRANSPORTATION USE THE FOLLOWING \*\***

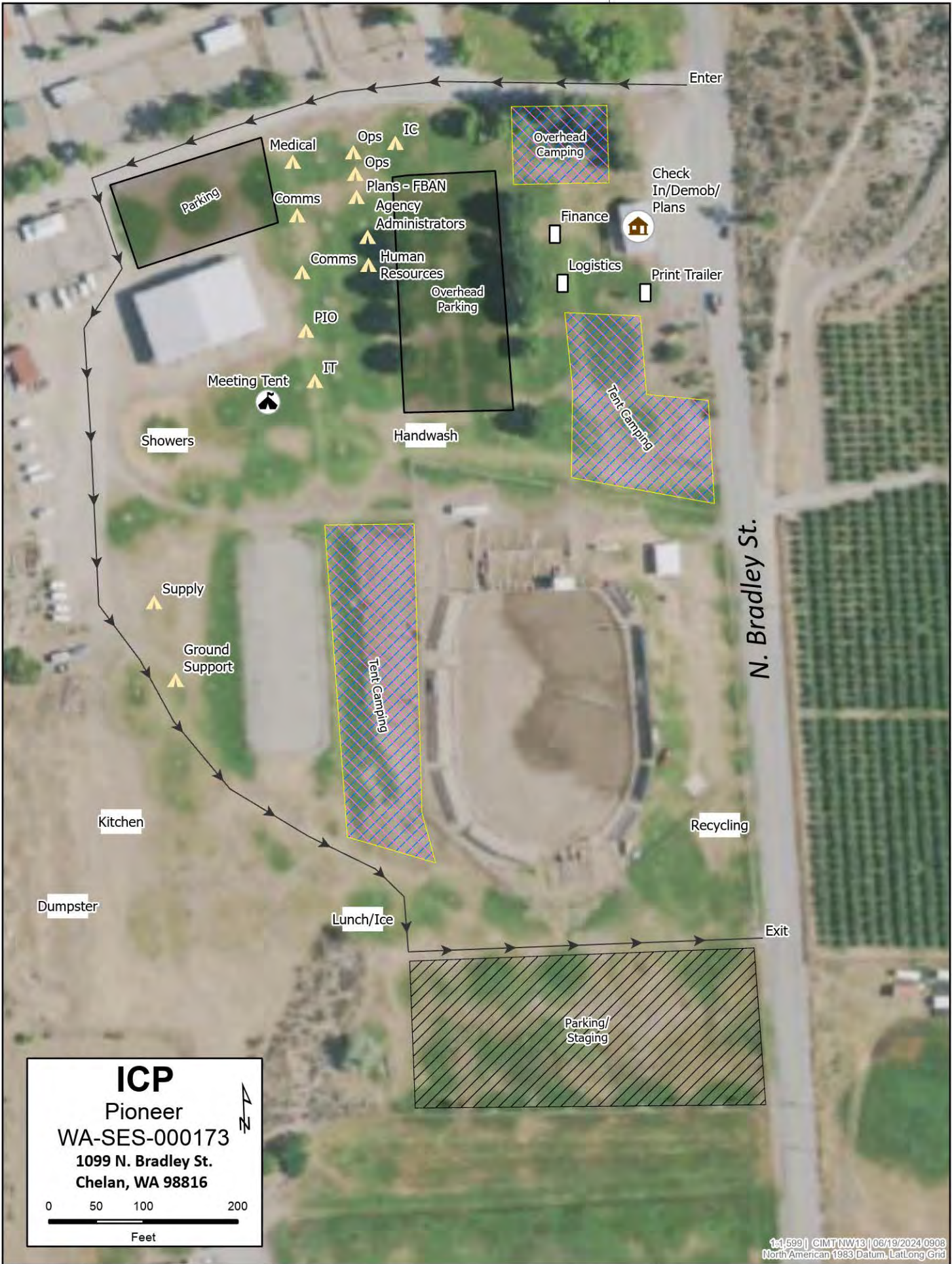
**Nathan Crawford, DIVS, 541-219-1374, [Nathan\\_crawford@fws.gov](mailto:Nathan_crawford@fws.gov)**

**Seth Ellis, DIVS (T), 509-860-3290, [seth.ellis453@gmail.com](mailto:seth.ellis453@gmail.com)**

## GENERAL MESSAGE (ICS 213)

|  |                  |                |
|--|------------------|----------------|
| <b>1. Incident Name</b> (Optional): Pioneer Fire   |                  |                |
| <b>2. To</b> (Name and Position): Nate Crawford DIVS/Seth Ellis- Boat DIVS(t)  |                  |                |
| <b>3. From</b> (Name and Position):  |                  |                |
| <b>4. Subject:</b> Ferry Tickets   | <b>5. Date:</b>  | <b>6. Time</b> |
| <b>7. Message:</b><br><p style="text-align: center;">SAMPLE GENERAL MESSAGE FORM WITH REQUIRED INFORMATION</p> <p>O or C # _____</p> <p>Departure Date _____</p> <p>Ferry Ticket Departure Location (Chelan/Fields Point/Lucerne/Stehekin) _____</p> <p>Ferry Ticket Arrival Location (Chelan/Fields Point/Lucerne/Stehekin) _____</p> <p>Email address for confirmation _____</p> <p>* If unable to receive email, please note and tickets will be emailed to either your DIVS or the Boat Coordinator.*</p> <p>Phone #: _____</p> <p>FERRY TICKETS NEED TO BE SUBMITTED TO BOAT DIVS BY 1600 THE DAY PRIOR OF DESIRED DEPARTURE.</p> <p>IT IS PREFERRED FORMS ARE SUBMITTED 48 HRS PRIOR TO KNOWN AND SET LWD.</p> |                  |                |
| <b>8. Approved by:</b> Name: _____ Signature: _____ Position/Title: _____  |                  |                |
| <b>9. Reply:</b>   |                  |                |
| <b>10. Replied by:</b> Name: _____ Position/Title: _____ Signature: _____  |                  |                |
| <b>ICS 213</b>   | Date/Time: _____ |                |

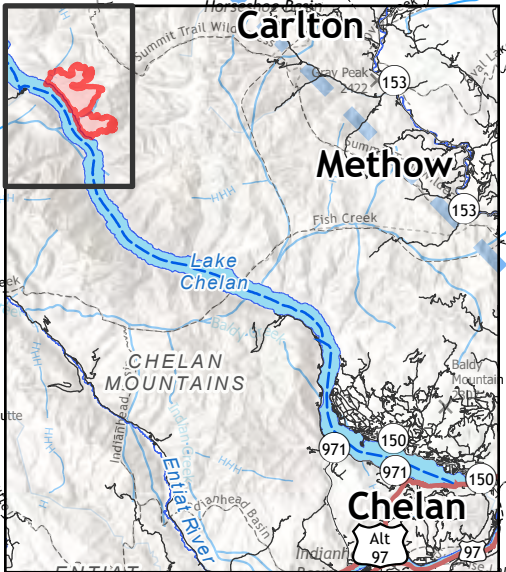
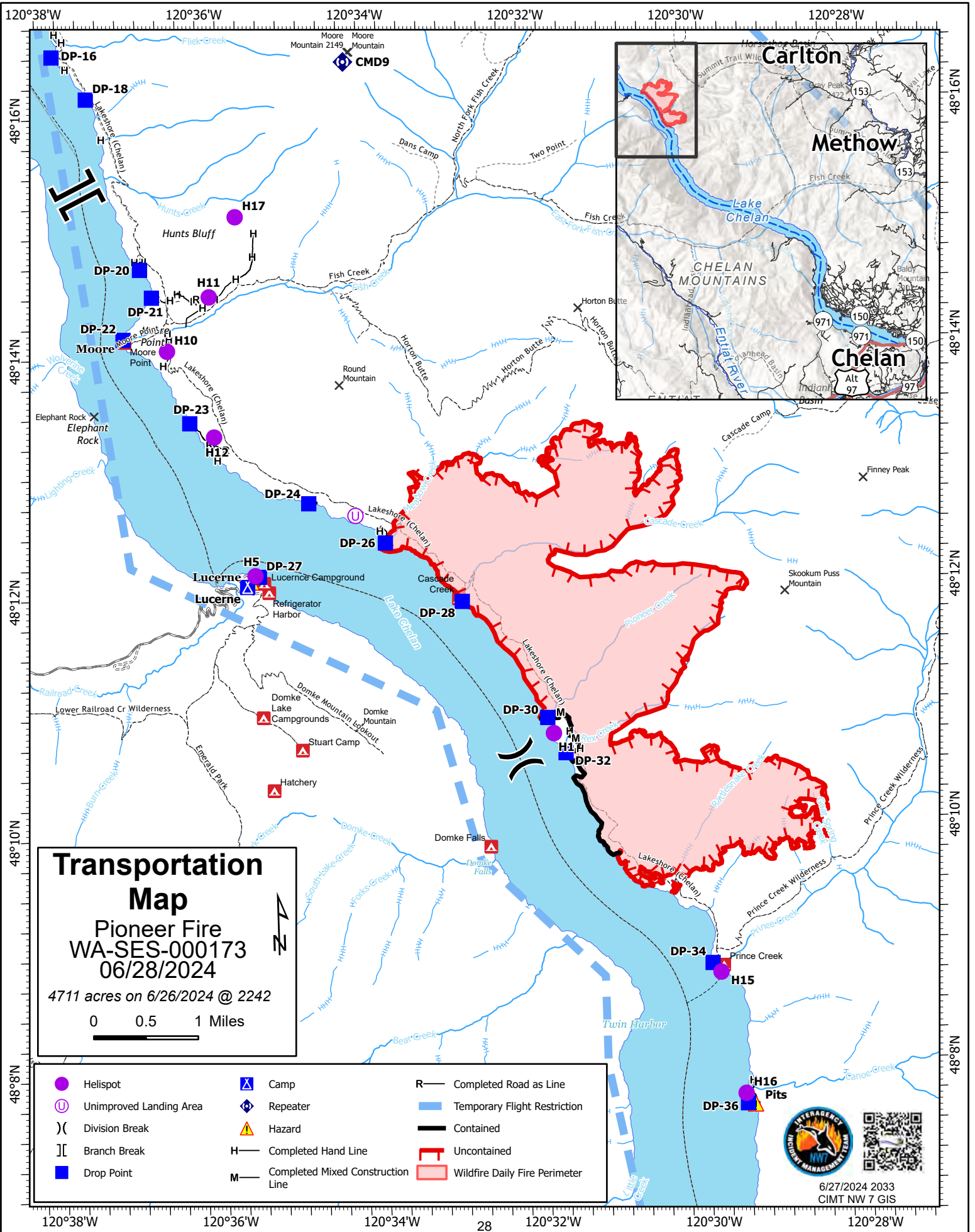




**ICP**  
 Pioneer  
 WA-SES-000173  
 1099 N. Bradley St.  
 Chelan, WA 98816

0 50 100 200  
 Feet





**Transportation Map**  
**Pioneer Fire**  
**WA-SES-000173**  
**06/28/2024**  
 4711 acres on 6/26/2024 @ 2242

0 0.5 1 Miles

- |                           |                                       |                                 |
|---------------------------|---------------------------------------|---------------------------------|
| ● Helispot                | ⊠ Camp                                | — R — Completed Road as Line    |
| ⊕ Unimproved Landing Area | ⬢ Repeater                            | ▬ Temporary Flight Restriction  |
| ) ( Division Break        | ⚠ Hazard                              | ▬ Contained                     |
| ⌈ ⌋ Branch Break          | H — Completed Hand Line               | ▬ Uncontained                   |
| ■ Drop Point              | M — Completed Mixed Construction Line | ▭ Wildfire Daily Fire Perimeter |



6/27/2024 2033  
 CIMT NW 7 GIS







| Team 7 Line Supply Order                          |   | Order #                                     |                                |        |
|---|---|---|--------------------------------|--------|
| Date & Time                                       | Deliver To Location/time                    | Delivery Method                             |                                |        |
| Order Placed                                      | (Division, Drop Point, Heli Spot, Lat/Long) | (Driver, Heli, DIVS to P/U)                 |                                |        |
| Order received in Communications (name & time)    |   | Ordered by (name and Position)              |                                |        |
| Order received in Supply by (name & time)         |   | Ground Contact                              |                                |        |
| Order received in Transportation by (name & time) |   | Contact Freq.                               |                                |        |
| Order received in Helibase by (name & time)       |   | Special Instructions/line length/ elevation |                                |        |
| Order shipped to line by (name & time)            |   |   |                                |        |
| #   | Item  | Amount                                      | Item                           | Amount |
| 1   | Meals #1842 MRE 12/Cs                       |   | Bath in a Bag, Large #0712     |        |
| 2   | Water #0048 5 gal cubies                    |   | Bath in a Bag, Small #0206     |        |
| 3   | Gatorade 24/Cs                              |   | Coffee Kit #0480               |        |
| 4   | Batteries, AA #0030 24/pg                   |   | Coffee 3lb Can                 |        |
| 5   | Batteries, AAA #7471 24/pg                  |   | Folda-Tank 1500 gal #0664      |        |
| 6   | Gas Unleaded 5 gal                          |   | Pumpkin 3000 gal. #0568        |        |
| 7   | 2 Cycle Oil #7724 5 gal mix                 |   | Backpack Pump #0909            |        |
| 8   | 2 cycle Oil #3444 1 Gal mix                 |   | Mark III pump + Kit #0148      |        |
| 9   | Diesel 5 gal                                |   | Lightweight Pump + Kit #8606   |        |
| 10  | Bar Oil #1880 1 Gal                         |   | Volume Pump #1222              |        |
| 11  | Bar Oil #1869 1 Qt                          |   | Hose 1 1/2" #1239 100' lg      |        |
| 12  | Shovel #0171                                |   | Hose 1" #1238 100' lg          |        |
| 13  | Pulaski #0146                               |   | Hose 3/4" #1016 50' lg         |        |
| 14  | Mcleod #0296                                |   | Reducer 1 1/2" to 1" #0010     |        |
| 15  | Combi #1180                                 |   | Reducer 1" to 3/4" #0733       |        |
| 16  | Chainsaw Kit #0340                          |   | Gated "Y" 1 1/2" #0231         |        |
| 17  | Drip Torch Empty #0241                      |   | Gated "Y" 1" #0259             |        |
| 18  | Fussee #0105                                |   | Gated "Y" 3/4" #0904           |        |
| 19  | Sleeping Pad #1566                          |   | In-line Tee 1 1/2" to 1" #0230 |        |
| 20  | Sleeping Bag #0022                          |   | Nozzle KK 1 1/2" #1082         |        |
| 21  | Fly Tent #0070                              |   | Nozzle KK 1" #1081             |        |
| 22  | Plastic Sheeting #0143                      |   | Nozzle 3/4" #0136              |        |
| 23  | Parachute Cord #0533                        |   | Nozzle, Forester 1" #0024      |        |
| 24  | Fiber Tape #0222                            |   | Sprinkler kit #1048            |        |
| 25  | Garbage Bags #0021                          |   |                                |        |
| 26  | Leadline 3000 lbs #0528                     |   |                                |        |
| 27  | Cargo Net 3000lb #0531                      |   | Team 7 Hose Lay Kit            |        |
| 28  | Swivel 3000lb #0526                         |   |                                |        |
| 29  | Slingable Bg 72 Gal Blivet #0426            |   |                                |        |
| 30  | Foam 5 gal. #1145                           |   |                                |        |
| 31  | Toilet Paper #0142                          |   |                                |        |
| 32  |   |   |                                |        |

| Team 7 Hose Lay Kit          |        |          |
|------------------------------|--------|----------|
| Item                         | Amount | Amount   |
| 1 1/2 in. synthetic hose     |        | 1000 ft. |
| 1 in. synthetic hose         |        | 500 ft.  |
| 3/4 in. garden hose          |        | 500 ft.  |
| 1 1/2 in. gated wye          |        | 5 ea.    |
| 1 1/2 in. - 1 in. reducer    |        | 5 ea.    |
| 1 in. combination nozzle     |        | 5 ea.    |
| 1 in. - 3/4 in. reducer      |        | 5 ea.    |
| 3/4 in. valve, shutoff, ball |        | 5 ea.    |
| 3/4 in. nozzle               |        | 5 ea.    |
| 3/4 in. gated wye            |        | 5 ea.    |

| SPRINKLER KIT NFES # 1048      |        |         |
|--------------------------------|--------|---------|
| Item                           | Amount | Amount  |
| Sprinkler head w/ couplings    |        | 4 ea.   |
| 3/4 in. garden hose            |        | 250 ft. |
| 1 1/2 x 1 1/2 x 1 tee          |        | 4 ea.   |
| 1 x 3/4 reducer                |        | 4 ea.   |
| 1 1/2 in. - 1 in. reducer      |        | 1 ea.   |
| 3/4 in. gated wye              |        | 2 ea.   |
| 3/4 in. valve, shutoff, ball   |        | 4 ea.   |
| 3/4 in. nozzle                 |        | 1 ea.   |
| 3/4 in. pressure regulator     |        | 4 ea.   |
| 3/4 in. nozzle, plastic 60 GPM |        | 1 ea.   |
| 10 in. adjustable wrench       |        | 1 ea.   |

**LINE ORDER PROCESS**

Line orders from the field should go through the Communication Unit via radio (primary) or 24-hour phone number shown on the cover of the IAP. All other supply requests should be submitted in person to the Supply Unit.

## Check In Message

- Please complete the virtual check-in process via the QR code on the front cover.
- You are not checked in until you provide the following:
  - 1) Red Cards
  - 2) Roster/Manifest
- Please email documents to: [2024.pioneer.checkin@firenet.gov](mailto:2024.pioneer.checkin@firenet.gov)

Any Questions:

Phone: 509-661-5372

Email: [2024.pioneer.checkin@firenet.gov](mailto:2024.pioneer.checkin@firenet.gov)

---

## Demob Message

- Fliers complete the “Air Travel Request” via the QR code on the front cover 72 hours prior to flight date.
- Return supplies to the Cache.
- Return radios, antennas, etc., to Communications.
- Contact Finance about closing out your paperwork.
- Once the above items have been completed, SCAN the QR code on the front cover and complete the demob questions.

Any Questions:

Phone: 509-662-5376

Email: [2024.pioneer.demob@firenet.gov](mailto:2024.pioneer.demob@firenet.gov)



## Check in ASAP

|          |                   |      |       |                  |      |
|----------|-------------------|------|-------|------------------|------|
| O-174.15 | Linda Gibson      | DIVS | O-207 | Steve Garvich    | THSP |
| O-190    | Brandon Asher     | THSP | O-208 | Bob Wentland     | THSP |
| O-192    | Tyee Zacher       | THSP | O-209 | Jason Watson     | THSP |
| O-193    | Adam Jones        | THSP | O-210 | Peter Brodie     | THSP |
| O-194    | Taylor Rains      | THSP | O-211 | Ron Simmons      | THSP |
| O-195    | Troy Keene        | THSP | O-224 | James Berge      | DRIV |
| O-196    | Sam Belsky        | THSP | O-234 | Alfred Wiehl JR  | OPBD |
| O-197    | Brandon Fogelson  | THSP | O-256 | Wayne Reggiatore | HMGB |
| O-198    | Stephanie Preheim | THSP | O-262 | Tumasi Ross      | TFLD |
| O-201    | Duke Odenrider    | THSP | O-279 | Brigitte Ranne   | REAF |
| O-202    | Chris Colbert     | THSP | O-280 | Eireann Pederson | REAF |
| O-203    | Houston Stodghill | THSP | O-281 | Carissa Camenson | REAF |
| O-206    | Tim Sullivan      | THSP | O-282 | Ben Kilfoil      | BT25 |





# Last Work Day / Demob Report

Incident: PIONEER US-WA-SES-000173

Questions ?? - Jay @ Demob (509) 661-5376

## LWD: 06/27 / Demob: 06/28

### CREWS

|      |     |                  |
|------|-----|------------------|
| CRW1 | C-8 | CRW1 - UNION IHC |
|------|-----|------------------|

### OVERHEAD

|      |      |                |
|------|------|----------------|
| SOFR | O-85 | MURRIN, ANDY K |
|------|------|----------------|

## LWD: 06/28 / Demob: 06/29

### CREWS

|      |     |                   |
|------|-----|-------------------|
| CRW1 | C-9 | CRW1 - ZIGZAG IHC |
|------|-----|-------------------|

|      |      |                    |
|------|------|--------------------|
| CRW1 | C-11 | CRW1 - REDMOND IHC |
|------|------|--------------------|

### EQUIPMENT

|      |      |   |
|------|------|---|
| DZR3 | E-92 | DZR3 - BATCHELOR EXCAVATION, LLC - N01927 |
|------|------|---|

### OVERHEAD

|      |      |                       |
|------|------|-----------------------|
| EMPF | O-75 | ETHERINGTON, NATHAN P |
|------|------|-----------------------|

|      |       |                    |
|------|-------|--------------------|
| HECM | O-119 | HASTINGS, ANDREW B |
|------|-------|--------------------|

|      |       |                     |
|------|-------|---------------------|
| HECM | O-120 | MASON, CORY WILLIAM |
|------|-------|---------------------|

|      |      |                      |
|------|------|----------------------|
| PIOC | O-56 | BOGARDUS, LARISA ANN |
|------|------|----------------------|

|      |          |                       |
|------|----------|-----------------------|
| PIOC | O-174.89 | STECKER, LIVIA AUDREY |
|------|----------|-----------------------|



# Pioneer Fire WA-SES-000173

## C&G Contact List

|                              |              |             |  |                |
|------------------------------|--------------|-------------|--|----------------|
| Incident Commander           | Lefevre      | Nathan      | <a href="mailto:nlefevre@blm.gov">nlefevre@blm.gov</a>   | (541) 255-6595 |
| Deputy Incident Commander    | Orr          | Christopher | <a href="mailto:christopher_orr@nps.gov">christopher_orr@nps.gov</a>                                     | (530) 640-1464 |
| Safety Officer               | Brown        | Eric        | <a href="mailto:ericbrown0523@gmail.com">ericbrown0523@gmail.com</a>                                     | (928) 699-3477 |
| Safety Officer               | Broyles      | Matt        | <a href="mailto:admbroyles@gmail.com">admbroyles@gmail.com</a>   | (541) 591-6151 |
| Liaison Officer              | Christianson | Shawn       | <a href="mailto:shawn.christianson.adm@colvilletribes.com">shawn.christianson.adm@colvilletribes.com</a> | (509) 429-3348 |
| Liaison Officer              | Suba         | Mark        | <a href="mailto:marksuba12@gmail.com">marksuba12@gmail.com</a>   | (541) 219-9048 |
| Liaison Officer              | Brody        | Greg        | <a href="mailto:lmgregbrody@gmail.com">lmgregbrody@gmail.com</a>   | (503) 482-8071 |
| Liaison Officer (T)          | Marchand     | Rhonda      | <a href="mailto:rmarchand76@yahoo.com">rmarchand76@yahoo.com</a>   | (509) 634-1166 |
| Public Information Officer   | Stecker      | Livia       | <a href="mailto:livia_stecker@firenet.gov">livia_stecker@firenet.gov</a>                                 | (509) 675-3504 |
| Finance Section Chief        | Westgate     | Patty       | <a href="mailto:pattywestgate@gmail.com">pattywestgate@gmail.com</a>                                     | (541) 892-8432 |
| Finance Section Chief (T)    | Bailey       | Lori        | <a href="mailto:lori.bailey@usda.gov">lori.bailey@usda.gov</a>   | (541) 589-0806 |
| Operations Section Chief     | Larson       | Jon         | <a href="mailto:jon_larson@fws.gov">jon_larson@fws.gov</a>   | (208) 631-6488 |
| Operations Section Chief     | Merritt      | Seth        | <a href="mailto:smerritt@esf-r.org">smerritt@esf-r.org</a>   | (425) 501-7384 |
| Operations Section Chief     | Kiene        | Jesse       | <a href="mailto:jkiene@blm.gov">jkiene@blm.gov</a>   | (541) 531-5568 |
| Operations Section Chief (T) | Poyner       | Rob         | <a href="mailto:robert.poyner@usda.gov">robert.poyner@usda.gov</a>                                       | (425) 512-2621 |
| Logistics Section Chief      | Yager        | Max         | <a href="mailto:orcamax2015@gmail.com">orcamax2015@gmail.com</a>   | (541) 690-6627 |
| Logistics Section Chief      | Vaughan      | Franklin    | <a href="mailto:franklin.vaughan@usda.gov">franklin.vaughan@usda.gov</a>                                 | (859) 619-7244 |
| Logistics Section Chief      | Wedekind     | Cindy       | <a href="mailto:cwedekind59@gmail.com">cwedekind59@gmail.com</a>   | (541) 450-1136 |
| Planning Section Chief       | Crawford     | Michael     | <a href="mailto:mcrawfor@blm.gov">mcrawfor@blm.gov</a>   | (458) 212-0501 |
| Planning Section Chief (T)   | Plummer      | Debbie      | <a href="mailto:dplummer@blm.gov">dplummer@blm.gov</a>   | (509) 991-0334 |



## MEDICAL PLAN (206 WF)

| 1. Incident/Project Name   |   |  |                             | 2. Operational Period                       |              |         |              |                               |
|--|---|--|-----------------------------|---|--------------|---------|--------------|-------------------------------|
| Pioneer Fire   |   |  |                             | Date/Time: 06/28/24 0700-2100               |              |         |              |                               |
| 3. Ambulance Services  |   |  |                             |   |              |         |              |                               |
| Name   | Complete Address                        | Phone  | Advanced Life Support (ALS) |   |              |         |              |                               |
| Lake Chelan EMS  | Chelan, WA                              | 911  | X                           |   |              |         |              |                               |
| 4. Air Ambulance Services  |   |  |                             |   |              |         |              |                               |
| Name   | Phone/Channel                           | Frequency, Type of Aircraft & Capability       |                             |   |              |         |              |                               |
| Life Flight - Brewster   | 1-800-232-0911 911                      | VMED 29, Rotor, ALS, 24 hr                     |                             |   |              |         |              |                               |
| Airlift NW - Wenatchee   | 1-800-426-2430 911                      | VMED 29, Rotor, ALS, 24 hr                     |                             |   |              |         |              |                               |
| Medivac Ship   | Command 7,8,9,10,11 (Linked)            | VMED 29, Rotor, BLS, Daytime                   |                             |   |              |         |              |                               |
| Mount Rainer Ship  | CWICC 1-509-884-3473 x 2                | VMED 29, Rotor, BLS, Daytime, Short Haul       |                             |   |              |         |              |                               |
| Snohawk 10 - Snohomish   | 1-800-258-5990 911                      | VMED 29, Rotor, ALS, Daytime, Hoist            |                             |   |              |         |              |                               |
| Spokane County Hoist - Spokane                                     | 1-509-532-8930 911                      | VMED 29, Rotor, ALS, 24 hr, Hoist Daytime Only |                             |   |              |         |              |                               |
| 5. Hospitals   |   |  |                             |   |              |         |              |                               |
| Name   | Degrees Decimal Minutes                 |  | Travel Time From Fire       |   | Phone        | Helipad |              | Level of Care                 |
|  |   |  | Air                         | Boat  |              | Yes     | No           |                               |
| Lake Chelan Health<br>110 S. Apple Blossom Drive<br>Chelan WA      | Lat:                                    | 47° 50' 20 N                                   | 30<br>Min                   | 3 Hr  | 509-683-2474 | X       |              | Level IV Trauma               |
|  | Long:                                   | 119° 59' 20 W                                  |                             |   |              |         |              |                               |
| Central Washington Hospital<br>1201 S. Miller<br>Wenatchee WA      | Lat:                                    | 47° 24. 43 N                                   | 1 Hr                        | 4 Hr  | 509-433-3115 | X       |              | Level II Trauma               |
|  | Long:                                   | 120° 19. 28 W                                  |                             |   |              |         |              |                               |
| Harborview Medical Center<br>325 9 <sup>th</sup> Ave<br>Seattle WA | Lat:                                    | 47° 36. 24 N                                   | 1.5 Hr                      | 6 Hr  | 206-744-4025 | X       |              | Level I Trauma<br>Burn Center |
|  | Long:                                   | 122° 19. 45 W                                  |                             |   |              |         |              |                               |
| <b>ICP</b>   | <b>EMS Responders &amp; Capability:</b> |  |                             | <b>James Brown MEDL/Paramedic</b>           |              |         | 360-775-5413 |                               |
|  |   |  |                             | <b>Mariann Turley MEDL/AEMT</b>             |              |         | 509-496-9370 |                               |
|  | Equipment Available on Scene:           |  |                             | ALS Kit, AED, O2, OTC meds                  |              |         |              |                               |
|  | Medical Emergency Channel:              |  |                             | Command 7, 8, 9, 10, 11 (Linked)            |              |         |              |                               |
|  | ETA for Ambulance to Scene:             |  |                             |   |              |         |              |                               |
|  | Air:                                    |  |                             | NA  |              |         |              |                               |
|  | Ground:                                 |  |                             | 15 Min                                      |              |         |              |                               |
|  | Approved Heli-Spot:                     |  |                             | NA  |              |         |              |                               |
| <b>LUCERNE FOB</b>   | <b>EMS Responders &amp; Capability:</b> |  |                             | <b>Ben Meacham MEDL/EMTF (Lucerne FOB)</b>  |              |         | 360-921-3817 |                               |
|  |   |  |                             | <b>MEDIC 6 Steve Medina (Boat Medical)</b>  |              |         | 360-556-9568 |                               |
|  |   |  |                             | <b>EMT 1 Ivan Huld (Boat Medical)</b>       |              |         | 360-888-9880 |                               |
|  | Equipment Available on Scene:           |  |                             | ALS Kit, AED, O2, OTC meds                  |              |         |              |                               |
|  | Medical Emergency Channel:              |  |                             | Command 7, 8, 9, 10, 11 (Linked)            |              |         |              |                               |
|  | ETA for Ambulance to Scene:             |  |                             |   |              |         |              |                               |
|  | Air:                                    |  |                             | 2 hr  |              |         |              |                               |
|  | Water/Ground:                           |  |                             | 3 hr  |              |         |              |                               |
| <b>BRANCH I</b>  | <b>EMS Responders &amp; Capability:</b> |  |                             | <b>MEDIC 1 Remington Becker (DIV Z)</b>     |              |         | 360-903-8612 |                               |
|  |   |  |                             | <b>MEDIC 3 Adam Lathrop (DIV A)</b>         |              |         | 425-531-0469 |                               |
|  |   |  |                             | <b>EMT 2 Aidan Noel (DIV A)</b>             |              |         | 206-458-0103 |                               |
|  |   |  |                             | <b>EMT 3 James Franklin (DIV A)</b>         |              |         | 253-312-1374 |                               |
|  |   |  |                             | <b>REMS 2 Brayden Kirk + 3 (DIV D)</b>      |              |         | 509-264-8203 |                               |
|  |   |  |                             | <b>Kevin Smith MEDL/EMPF (Stehekin FOB)</b> |              |         | 509-710-0239 |                               |
|  | Equipment Available on Scene:           |  |                             | ALS Kit, Monitor/Defib, O2                  |              |         |              |                               |
|  | Medical Emergency Channel:              |  |                             | Command 7, 8, 9,10, 11 (Linked)             |              |         |              |                               |
| ETA for Ambulance to Scene:  |   |  |                             |   |              |         |              |                               |
| Air:   |   |  | 2 hr                        |   |              |         |              |                               |
| Water/Ground:  |   |  | 3 hr                        |   |              |         |              |                               |
| Approved Heli-Spots:   |   |  |                             |   |              |         |              |                               |
| H1 48° 10.813' N   |   | H11 48° 14.492' N                              |                             | H15 48° 08.754' N                           |              |         |              |                               |
| 120° 31.925' W   |   | 120° 35.922' W                                 |                             | 120° 29.813' W                              |              |         |              |                               |
| H10 48° 14.099' N  |   | H12 48° 13.381' N                              |                             | H16 48° 07.744' N                           |              |         |              |                               |
| 120° 36.782' W   |   | 120° 35.919' W                                 |                             | 120° 29.541' W                              |              |         |              |                               |
| Lat:   |   |  | NA                          |   |              |         |              |                               |
| Long:  |   |  | NA                          |   |              |         |              |                               |

## MEDICAL PLAN (206 WF)

|                  |   |  |
|------------------|---|--|
| <b>BRANCH IV</b> | <b>EMS Responders &amp; Capability:</b> | Unstaffed with medical<br>Contingency medical resources can assist   |
|                  | Equipment Available on Scene:           |  |
|                  | Medical Emergency Channel:              | Command 7, 8, 9, 10, 11, 12 (Linked)   |
|                  | ETA for Ambulance to Scene:             |  |
|                  | Air:                                    | 2 hr   |
|                  | Ground:                                 | 3 hr   |
|                  | Approved Heli-Spot:                     | NA   |
|                  | Lat:                                    | NA   |
| Long:            | NA                                      |  |
| <b>BRANCH V</b>  | <b>EMS Responders &amp; Capability:</b> | <b>MEDIC 2 Joel Bower (CONTINGENCY)</b> 360-461-7390<br><b>MEDIC 5 Brian Linacre (CONTINGENCY)</b> 301-781-7990<br><b>MEDIC 7 Steve Drab (CONTINGENCY)</b> 406-600-2059<br><b>REMS 1 Ray Storm +4 (DIV S)</b> 415 637-0491<br><b>MEDIC 4 Nathan Etherington (DIV S)</b> 360-969-1251 |
|                  | Equipment Available on Scene:           | ALS Kit, Monitor/Defib, O2, Rescue Gear  |
|                  | Medical Emergency Channel:              | Command 7, 8, 9, 10, 11, 12 (Linked)   |
|                  | ETA for Ambulance to Scene:             |  |
|                  | Air:                                    | 2 hr   |
|                  | Ground:                                 | 3 hr   |
|                  | Approved Heli-Spot:                     |  |
|                  | Lat:                                    | <b>H25 47° 59.200' N</b>   |
| Long:            | <b>120° 16. 521' W</b>                  |  |
| <b>TBD</b>       | <b>EMS Responders &amp; Capability:</b> | TBD  |
|                  | Equipment Available on Scene:           |  |
|                  | Medical Emergency Channel:              | Command 7,8,9,10,11 (Linked)   |
|                  | ETA for Ambulance to Scene:             |  |
|                  | Air:                                    | 2 hr   |
|                  | Ground:                                 | 3 hr   |
|                  | Approved Heli-Spot:                     | NA   |
|                  | Lat:                                    | NA   |
| Long:            | NA                                      |  |
| <b>TBD</b>       | <b>EMS Responders &amp; Capability:</b> | TBD  |
|                  | Equipment Available on Scene:           |  |
|                  | Medical Emergency Channel:              | Command 7,8,9,10,11 (Linked)   |
|                  | ETA for Ambulance to Scene:             |  |
|                  | Air:                                    |  |
|                  | Ground:                                 |  |
|                  | Approved Heli-Spot:                     | NA   |
|                  | Lat:                                    | NA   |
| Long:            | NA                                      |  |
| <b>TBD</b>       | <b>EMS Responders &amp; Capability:</b> | TBD  |
|                  | Equipment Available on Scene:           |  |
|                  | Medical Emergency Channel:              | Command 7,8,9,10,11 (Linked)   |
|                  | ETA for Ambulance to Scene:             |  |
|                  | Air:                                    |  |
|                  | Ground:                                 |  |
|                  | Approved Heli-Spot:                     | NA   |
|                  | Lat:                                    | NA   |
| Long:            | NA                                      |  |

| Prepared By (Medical Unit Leader) | Date     | Reviewed By (Safety Officer)   | Date     |
|-----------------------------------|----------|--------------------------------|----------|
| Mariann Turley MEDL               | 06/27/24 | Matt Broyles SOFC              | 06/27/24 |
| Signature: <i>Mariann Turley</i>  |          | Signature: <i>Matt Broyles</i> |          |

# MEDICAL PLAN (ICS 206 WF)

Controlled Unclassified Information//Basic

## Medical Incident Report

**FOR A NON-EMERGENCY INCIDENT, WORK THROUGH CHAIN OF COMMAND TO REPORT AND TRANSPORT INJURED PERSONNEL AS NECESSARY.**

**FOR A MEDICAL EMERGENCY: IDENTIFY ON SCENE INCIDENT COMMANDER BY NAME AND POSITION AND ANNOUNCE "MEDICAL EMERGENCY" TO INITIATE RESPONSE FROM IMT COMMUNICATIONS/DISPATCH.**

Use the following items to communicate situation to communications/dispatch.

1. CONTACT COMMUNICATIONS / DISPATCH (**Verify correct frequency prior to starting report**)

*Ex: "Communications, Div. Alpha. Stand-by for Emergency Traffic."*

2. INCIDENT STATUS: *Provide incident summary (including number of patients) and command structure.*

*Ex: "Communications, I have a Red priority patient, unconscious, struck by a falling tree. Requesting air ambulance to Forest Road 1 at (Lat./Long.) This will be the Trout Meadow Medical, IC is TFLD Jones. EMT Smith is providing medical care."*

|   |   |   |
|---|---|---|
| Severity of Emergency / Transport Priority        | <input type="checkbox"/> RED / PRIORITY 1 Life or limb threatening injury or illness. Evacuation need is IMMEDIATE<br><i>Ex: Unconscious, difficulty breathing, bleeding severely, 2° – 3° burns more than 4 palm sizes, heat stroke, disoriented.</i><br><input type="checkbox"/> YELLOW / PRIORITY 2 Serious Injury or illness. Evacuation may be DELAYED if necessary.<br><i>Ex: Significant trauma, unable to walk, 2° – 3° burns not more than 1-3 palm sizes.</i><br><input type="checkbox"/> GREEN / PRIORITY 3 Minor Injury or illness. Non-Emergency transport<br><i>Ex: Sprains, strains, minor heat-related illness.</i> |   |
| Nature of Injury or Illness & Mechanism of Injury |   | <i>Brief Summary of Injury or Illness<br/>(Ex: Unconscious, Struck by Falling Tree)</i> |
| Transport Request                                 |   | <i>Air Ambulance / Short Haul/Hoist<br/>Ground Ambulance / Other</i>                    |
| Patient Location                                  |   | <i>Descriptive Location &amp; Lat. / Long. (WGS84)</i>                                  |
| Incident Name                                     |   | <i>Geographic Name + "Medical"<br/>(Ex: Trout Meadow Medical)</i>                       |
| On-Scene Incident Commander                       |   | <i>Name of on-scene IC of Incident within an Incident (Ex: TFLD Jones)</i>              |
| Patient Care                                      |   | <i>Name of Care Provider<br/>(Ex: EMT Smith)</i>  |

3. INITIAL PATIENT ASSESSMENT: *Complete this section for each patient as applicable (start with the most severe patient)*

Patient Assessment: See IRPG page 106

Treatment:

4. TRANSPORT PLAN:

Evacuation Location (if different): *(Descriptive Location (drop point, intersection, etc.) or Lat. / Long.)* Patient's ETA to Evacuation Location:

Helispot / Extraction Site Size and Hazards:

5. ADDITIONAL RESOURCES / EQUIPMENT NEEDS:

*Example: Paramedic/EMT, Crews, Immobilization Devices, AED, Oxygen, Trauma Bag, IV/Fluid(s), Splints, Rope rescue, Wheeled litter, HAZMAT, Extrication*

6. COMMUNICATIONS: Identify State Air/Ground EMS Frequencies and Hospital Contacts as applicable

| Function    | Channel Name/Number | Receive (RX) | Tone/NAC * | Transmit (TX) | Tone/NAC * |
|-------------|---------------------|--------------|------------|---------------|------------|
| COMMAND     |                     |              |            |               |            |
| AIR-TO-GRND |                     |              |            |               |            |
| TACTICAL    |                     |              |            |               |            |

7. CONTINGENCY: **Considerations:** *If primary options fail, what actions can be implemented in conjunction with primary evacuation method? Be thinking ahead.*

8. ADDITIONAL INFORMATION: *Updates/Changes, etc.*

**REMEMBER:** Confirm ETA's of resources ordered. Act according to your level of training. Be Alert. Keep Calm. Think Clearly. Act Decisively.