

SATURDAY



JUNE 29, 2024

OPERATION PERIOD

Day: 0700 - 2100

COMMUNICATIONS 24-HOUR
EMERGENCY NUMBER

(208) 891-7948

PIONEER CHARGE CODES

USFS: PN RZ79 (1522)

DOI: RZ79

WA DNR: 221-LDW

SEND PHOTOS TO:

2024.pioneer@firenet.gov



Maps, IAP,
Finance / Eval.



PIONEER INCIDENT ACTION PLAN

Pioneer

WA-SES-000173



Notes

| |
|--|
| |
| |
| |
| |
| |
| |
| |
| |
| |
| |
| |
| |
| |
| |
| |
| |
| |
| |
| |
| |
| |
| |

| | Ground | Air |
|---------|--------|-----|
| FS: | | |
| DNR: | | |
| OSC: | | |
| FSAA: | | |
| DNR AA: | | |

| | | | |
|--|--|---------------------------------------|------------------------|
| INCIDENT OBJECTIVES | 1. Incident Name PIONEER | 2. Date Prepared 06/28/2024 | 3. Time 1900 |
| 4. Operational Period Day Operations: 0700-2100 | | | |
| <p>Strategic Framework: The Pioneer Fire is a full suppression fire utilizing strategies and tactics that provide the highest likelihood of success while mitigating risks to the responders and public. Extreme terrain prevents direct attack. Indirect lines are being identified and established that reduces risk to responders while protecting identified values including private and federal infrastructure and recreational values.</p> <p>Management Objectives:</p> <ul style="list-style-type: none"> • Ensure the safety and well-being of responders and the public by making timely risk-informed decisions that align with values at risk. • Protect private and federal infrastructure and recreational values. • Foster relationships with local cooperators and the public by providing coordinated, accurate, and timely information. • Coordinate suppression activities with READ's to identify and mitigate current and future impacts to the landscape and resources. • Treat each other with dignity and respect and act in a professional manner on the fire and in the communities. • Manage cost commensurate with values at risk by coordinating with the Agency Administrators and Incident Business Advisors. <p>Operational Objectives:</p> <ul style="list-style-type: none"> • Implement an effective suppression strategy utilizing direct attack where and when appropriate to protect values at risk. When fire behavior, terrain, or safety concerns prohibit direct attack, utilize other suppression tactics such as indirect and point protection as appropriate to reduce risk to responders. Take advantage of natural features such as breaks in fuels, topographic features, or changes in weather. • Establish indirect control lines with the highest probability of success which prevent fire spread into populated areas. • Communicate with local law enforcement officials to ensure current and potential evacuations are coordinated. | | | |
| 6. Weather Forecast for Period | | | |
| 7. General Safety Message | | | |
| 8. Attachments (mark if attached) | | | |
| X Organization List - ICS 203 | X Medical 206WF - 8 Line | X Finance Message | |
| X Div. Assignment Lists - ICS 204 | X Safety Message | X Dutch Creek Protocol | |
| X Communications Plan - ICS 205 | LCES – ICS 215A | X Phone List | |
| X Medical Plan - ICS 206 | X Weather Forecast | X Incident Map(s) | |
| X Air Operation Summary - ICS 220 | X Fire Behavior | X Unit Log | |
| Prepared by Planning Section Chief <i>Nike Crawford</i> | Approved by Incident Commander <i>Nate Lafuze</i> | | |

| ORGANIZATION ASSIGNMENT LIST | |
|---|--|
| 1. Incident Name PIONEER | |
| 2. Date Prepared JUNE 28, 2024 | 3. Time Prepared 1800 |
| 4. Operational Period JUNE 29, 2024 0700 – 2100 | |
| 5. Incident Commander and Staff | |
| Position | Name |
| Incident Commander | Nate LeFevre |
| Incident Commander (T) | Steve North |
| Deputy | Chris Orr |
| Safety Officer | Matt Broyles / Eric Brown |
| Information Officer | Cheyne Rossbach |
| Liaison | Shawn Christianson / Greg Brody (Stehekin) / Mark Suba / Rhonda Marchand (T) |
| Human Resources | Margaret Dietrich |
| 6. Agency Representatives | |
| Agency | Name |
| USFS Oka/Wen Agency Admin | Kari Grover-Wier |
| USFS Oka/Wen Agency Admin (T) | Paul Willard |
| DNR Agency Administrator | Larry Leach |
| DNR Deputy Agency Administrator | Wyatt Leighton |
| NPS Agency Administrator | Don Striker |
| NPS Agency Representative | John Goss |
| NPS FMO | Matt Ellis |
| READ Liaison | Courtney Rowe |
| 7. Planning Section | |
| Plans Section Chief | Mike Crawford |
| Deputy | Debbie Plummer (T) |
| Resource Unit | Gary Duranceau/ Cari Richardson |
| Status Check-in | Katelyn Roeder / Charlie Hardy |
| Situation Unit | Shannon Theall / Ray Moeckel (T) |
| GIS Specialists | Aleksandar Dozic / Olivia Hughes (T) |
| Demob Unit | Jay Lord |
| Documentation Unit | Chris Oelschlager |
| Incident Meteorologist | Todd Carter |
| Fire Behavior Analyst | Steve Ziel / Michael Bowden |
| Long Term Fire Analyst | Brett Smith (T) (Virtual) |
| 8. Logistics Section | |
| Logistics Section Chief | Franklin Vaughan / Larry Falcon (T) |
| Deputy | Max Yager (Stehekin) / Cindy Wedekind (Lucerne) |
| Facilities | Jan Robbins / Kelsy Lipp / Peter Drott (T) / Mike Prevost (T) / Randy Rector (T) |

| Base Camp Manager | Dave Lefevre/Mac McEntyre (T) | |
|-----------------------------------|---|----------------------------------|
| Supply Unit | Vicki Cunningham | |
| IT Specialist | Mike Gascon / Chad Funnemark / Ben Smith (T) | |
| Receiving Distribution | Michael Hanson / Karl Peterson (T) / David Richards (Stehekin) | |
| Ordering Manager | Noe Reyes | |
| Ground Support Unit | Casey Glade / Joe Keady | |
| Communication Unit | Seth Baumgartner / Michael Merrick (T) | |
| Communication Tech. | Keith Schaff / Kevin Judd | |
| Food Unit | Kristy Naughton / John Cody/Phil Moller/Shawna Monroe (T) | |
| Security Manager | Michael Fakier | |
| Medical Unit | Mariann Turley / James Brown / Kevin Smith (T) (Stehekin) / Ben Meacham | |
| 9. Operations Section | | |
| OPS Section Chief - Lead | Jon Larson / Jeff Bortner (T) | |
| OPS Section Chief - Planning | Rob Poyner (T) | |
| OPS Section Chief – Field | Seth Merritt | |
| a. Branch I | | |
| Branch Director | Thom Taylor / Josh Verellen (T) | |
| Division | A | Seth Missal / James Fields (T) |
| Division | Z | Travis Baker/Frank Heilman (T) |
| b. Branch II | | |
| Branch Director | Thom Taylor / Josh Verellen (T) | |
| Division | D | Ben Lippert / Silas Baffa (T) |
| c. Branch IV | | |
| Branch Director | Roger Goldman | |
| Division | H | Matt Ziegler / Steve Abrams (T) |
| c. Branch V | | |
| Branch Director | Alfred Wiehl | |
| Division | S | Linda Gibson / Holt Jaeger (T) |
| Division | Contingency / Roads | Jennifer Harris/Eric Metzger (T) |
| Division | Boat | Nate Crawford / Seth Ellis (T) |
| Division | Staging | Jon Merager |
| d. Air Operations Branch | | |
| AOB Director – Planning | Mark Hocken | |
| AOB Director – Field | Ted Hass | |
| 10. Finance Section | | |
| Finance Section Chief | Patty Westgate / Lori Bailey (T) | |
| Time Unit | Beverly Hollars / Heather Wall | |
| Procurement | Audrey Mainwaring | |
| Comp/Claims | Kelly Lorenz (Virtual) | |
| Cost Unit | Dede Domingos (Virtual) | |
| Prepared by Cari Richardson, RESL | | |



Fire Weather Forecast



FORECAST NO: 17

INCIDENT: Pioneer Fire

PREDICTION FOR: 24 Hr Shift

SHIFT DATE: Thursday 6/29/2024

SIGNED: *Todd Carter*

TIME AND DATE ISSUED: 6/28/2024 1900 hrs

Incident Meteorologist (IMET)

Discussion:

Saturday is a transition day as a cold front slowly moves in. Clouds will cover the area ahead of a cold front with winds away from Lake Chelan trending more southerly. Winds should still be able to channel up the lake for most of the day, switching to northwest in the evening. Rain/Thunder chances increase into Saturday afternoon and Sunday but low chances for wetting rain. It will be a little cooler with breezy northwest wind Sunday and Monday.

WEATHER FORECAST FOR TODAY:

SKY/WEATHER: Mostly cloudy. Chance of rain in the afternoon (CWR: 5%). 10 percent chance of Thunderstorms Stehekin area.

MAX TEMPERATURE: 74 to 79 valleys/mid-slopes. 60 to 65 ridges.

MIN RH: 35 to 43 percent valleys/mid-slopes. 45 to 50 percent ridges.

20 FT WINDS:

Lower Valleys: South to Southeast 5 to 10 mph gusts to 15 mph.

Mid-slopes and Ridges: South 10 mph becoming southwest gusts to 20 mph in the afternoon

HAINES INDEX: 2 Very Low.

TRANSPORT WINDS: S 10 mph.

INVERSION: 1000 ft inversion starting to lift at 0800 with a max of 5000 ft by 1300.

TONIGHT:

SKY/WEATHER: Mostly cloudy. A chance of rain. (CWR: 5%)

MIN TEMPERATURE: 52 to 57.

MAX RH: 60 to 70 percent.

20 FT WINDS:

Valleys/Lower Slopes: Becoming Northwest down lake 8 to 12 mph gusts to 20 mph in the evening.

Mid-Slopes and Ridges: Becoming northwest 9 mph gusts to 20 mph..

INVERSION: Developing after 2100 hrs to near 1500 ft.

SUNDAY:

SKY/WEATHER: Partly cloudy with a chance of rain.

MAX TEMPERATURE: 71 to 77 valleys/mid-slopes. 58 to 63 ridges.

MIN RH: 35 to 43 percent valleys/mid-slopes. 50% ridges.

20 FT WINDS:

Lower Valleys: Northwest 8 to 13 mph gusts to 20 mph.

Mid-slopes and Ridges: West to northwest 12 mph gusts to 25 mph.

HAINES INDEX: 2 Very Low.

TRANSPORT WINDS: S 10 mph.

Boating concerns Saturday: South to occasional southwest winds to 10 mph expected on Lake Chelan.

Aviation concerns Saturday: Temp. near 20C at 4000 feet for load calcs. Ridge Winds coming from a southwest direction 10 to 15 kts.

Weather observations can now be texted to 509-319-0474 or emailed to todd.carter@noaa.gov

Fire Behavior Forecast # 18

| | |
|---|--|
| Name of Incident: Pioneer | Administrative Unit: SE Region DNR / Okanogan-Wenatchee NF |
| Date & Time Issued: June 28, 2024 @ 2000 | Operational Period: DAY 06/29/2024 |
| FBAN: Steve Ziel | Signed: /z/ |

Assumptions: *After today's cloudy cold front moves through expect a progressive warming and drying trend that should result in increased fire behavior in the coming days. Current fuel conditions will support limited fire spread until sufficient drying occurs. Potential fire behavior is being inhibited by fuel condition and discontinuity. Expect limited burning conditions in exposed fine fuels between 1300-1700. Persistent burning and heat retention in heavy fuels will serve as ignition sources as drying occurs. Live fuels are not contributing to fire spread (yet). Lake effect winds (up or down lake) dominate lower and mid slopes; the fire areas is on a SW aspect with steep side drainages that provide upslope winds. Wind/slope alignment and/or lake wind will influence drying rate and fire spread. Expect up lake till afternoon then down lake winds late.*

Weather Summary

*See attached Fire Weather Forecast

Fire Behavior Summary

Fuels in the fire area are composed of a mosaic of *Timber Litter, Grass, Timber with Understory, and Grass/Shrub* models. The fire is burning in the Rex Creek (2001) fire footprint. Primary tree species include mixed sizes and densities of Douglas Fir and Ponderosa Pine. Local timber litter is compact to fluffy. Brush and understory species include ceanothus, hardwoods, and dog-hair conifer reproduction. Large snags and heavy downed fuel loadings are common throughout all areas. Live woody and herbaceous fuels are seasonally moist, and not contributing to rates of spread; grasses are partially to fully cured. Fuel conditions change by aspect, previous fire history, and soil moisture. Low crown base height (ladder fuels) is present in most of the timbered areas.

Today's potential fire behavior may include isolated pockets/areas of smoldering, creeping, and limited spread with wind/slope alignment. Primary spread mechanism has been backing with rollout, flanking, and limited head fire spread. Heavy fuels are retaining heat and will serve as ignition sources as fine fuels dry from wind and lower RH during the burn period. Early season fuel condition is inhibiting full fire behavior potential – live fuels are moist, some grasses are still curing.

* **FFM= 7%-9%, 1000hr. moisture=12%, Woody fuels 170%, Probability of Ignition-40-50%, Max Spotting < 0.2**

| Fuel Type | Rate of Spread | Flame Length | Backing ROS | 35 MPH Gust – Ridgetop |
|--------------------------------------|----------------|--------------|-------------|------------------------|
| ...If your work area includes - | (CH/HR = FPM) | Feet | FPM | FPM |
| GR2 - Moderate load grass/shrub | 2 - 3 | <2 | < 1 | 2 - 3 |
| SH2 – Moderate load shrub | 1 - 2 | 2 | < 1 | 5-7 |
| TU5 - High load Timber w/ Understory | 8 - 9 | 6-7 | < 1 | 20-25 |
| TL8 – Long needle timber litter | 8 - 9 | 3-4 | < 1 | 20-25 |

Specific Assignments:

Div. A – Expect smoldering, backing, and limited flanking in upper Meadow Cr./ Cascade Cr. Heavy fuels will continue to consume.

Div. Z – Ragged edge fire edge on north side of Prince Cr will continue to smolder, flank, and back with rollout.

Other Divisions – Should not be affected by fire activity during the burn period. Monitor smoke direction and amount. Assess fuels.

***IA** – Ensure good size-up before engaging. Assess fire spread potential based on fuel, weather, topography and values at risk.

Air Operations: SW ridgetop wind gusts to 20 mph by afternoon. Monitor ridge top wind transitions; up/down lake winds 10 mph.

Safety

ALWAYS BASE ACTIONS ON CURRENT AND EXPECTED FIRE BEHAVIOR GIVEN THE ENVIRONMENTAL CONDITIONS IN YOUR LOCAL AREA. MAINTAIN SITUATIONAL AWARENESS FOR CHANGING CONDITIONS AS YOU CHANGE LOCATIONS (FUEL, WEATHER, AND TOPOGRAPHY). REMAIN VIGILANT FOR FACTORS THAT ALIGN TO PRODUCE CRITICAL FIRE ENVIRONMENTS (THUNDERSTORMS, FINE FLASHY FUELS, SLOPE...).

*Today's Fire Behavior Forecast contains 629 words written for your situational awareness.

| | | | | | | | |
|---|------------------------------|------------------------------|---|-----------------------------|---------------------------------|---------------------------------|-------------------|
| DIVISION ASSIGNMENT LIST | | | 1. Branch I | | 2. Division / Group A | | |
| 3. Incident Name Pioneer | | | 4. Operational Period Date: 06/29/2024 Time: 0700-2100 | | | | |
| 5. Operations Personnel | | | | | | | |
| Operations Chief | | Jon Larson / Jeff Bortner(T) | | Division / Group Supervisor | | Seth Missal / James Fields (T) | |
| Operations Chief (Plans) | | Rob Poyner (T) | | Branch Director | | Thom Taylor / Josh Verellen (T) | |
| Safety Officer | | Matt Broyles / Eric Brown | | Air Attack Supervisor | | Chad Bergren | |
| 6. Resources Assigned this Period | | | | | | | |
| Strike Team / Task Force / Resource Designator | | Leader | | Number Persons | Tentative Last Work Day | Drop Off Pt / Time | Pick Up Pt / Time |
| 1. | O-179 TFLD | Charlie Humbert | 1 | 7/9 | | | |
| 2. | O-180 TFLD | Joe Landburg | 1 | 7/10 | | | |
| 3. | O-266 TFLD (T) | Frank Bojorquez | 1 | 7/12 | | | |
| 4. | | | | | | | |
| 5. | **C-13 CRW1 Vale IHC | Glen Heitz | 20 | 7/4 | | | |
| 6. | O-187 WFM1 Grass Lake | William Johnson | 9 | 7/7 | | | |
| 7. | O-127 FMOD Rainstorm | Kendall Cain | 2 | 7/1 | | | |
| 8. | O-128 FMOD Rainstorm | Mike Lind | 2 | 7/1 | | | |
| 9. | O-129 FELB | Mel Tenneson | 1 | 7/1 | | | |
| 10. | | | | | | | |
| 11. | O-67 MEDIC 3 | Adam Lathrop | 1 | 7/4 | | | |
| 12. | O-137 EMT 3 | James Franklin | 1 | 7/1 | | | |
| 13. | O-153 EMT 2 | Aiden Noel | 1 | 7/1 | | | |
| 14. | | | | | | | |
| 15. | O-174.52 SOFR | George Libercajt | 1 | 7/7 | | | |
| 16. | O-142 SOF2 | Kelly Jensen | 1 | 7/1 | | | |
| 17. | O-175 SOFR | Melissa Moore | 1 | 7/4 | | | |
| 18. | | | | | | | |
| 19. | | | | | | | |
| 20. | | | | | | | |
| 7. Control Operations | | | | | | | |
| Task: Contain fire spread to the northwest where terrain and fuels allow for highest probability of success. Assess fire perimeter progression to the north and west at higher elevations. Implement point protection efforts on federal & private infrastructure. | | | | | | | |
| Purpose: To slow fire progression, provide time for suppression tactics, and continue to prep around critical values. | | | | | | | |
| End state: Minimize fire impacts to critical values including private inholdings and Forest Service infrastructure. | | | | | | | |
| 8. Special Instructions | | | | | | | |
| <ul style="list-style-type: none"> In large or long term spike camps use helicopters, boats, or pack stock to deliver portable backcountry latrines and remove human waste if necessary. If camp does not have adequate pack, boat, or air support for human waste management, establish community latrines well away from water sources and common areas. Use human waste bags, if necessary. Minimize ground disturbance on the Moore Point and Meadow Creek alluvial fans in order to protect sensitive resources. Ensure hazard mitigations and IWI protocols are in place before taking action. Hose used from Prince Creek to Moore Pt: contaminated with invasive plants. Do not reuse. Backhaul to Moore Pt DP22 and store in "infested hose" area at Moore Pt until decontaminated. ** Denotes available for Initial Attack | | | | | | | |
| 9. Division / Group Communication Summary | | | | | | | |
| Function | Frequency | System | Channel | Function | Frequency | System | Channel |
| Command Repeater | See Comm Plan | | | Command | See Comm. Plan | | |
| TAC | | | | Air To Ground | See Comm. Plan | | |
| Prepared by (Resource Unit Leader): Name: Gary Duranceau | | | Approved by (Planning Section Chief) Name: Mike Crawford | | | Date 6/28/24 | Time 1900 |

| | | | | | | | |
|--|--|-------------------------|---|---------------------------------|----------------------------------|-------------------|--------------|
| DIVISION ASSIGNMENT LIST | | | 1. Branch I | 2. Division / Group Z | | | |
| 3. Incident Name Pioneer | | | 4. Operational Period Date: 06/29/2024 Time: 0700-2100 | | | | |
| 5. Operations Personnel | | | | | | | |
| Operations Chief | Jon Larson / Jeff Bortner (T) | | Division / Group Supervisor | | Travis Baker / Frank Heilman (T) | | |
| Operations Chief (Plans) | Rob Poyner (T) | | Branch Director | | Thom Taylor / Josh Verellen (T) | | |
| Safety Officer | Matt Broyles / Eric Brown | | Air Attack Supervisor | | Chad Bergren | | |
| 6. Resources Assigned this Period | | | | | | | |
| | Strike Team / Task Force / Resource Designator | Leader | Number Persons | Tentative Last Work Day | Drop Off Pt / Time | Pick Up Pt / Time | |
| 1. | O-177 TFLD | Brett Matthews | 1 | 7/10 | | | |
| 2. | | | | | | | |
| 3. | O-182 WFM1 Selway | JT Sohr | 14 | 7/8 | | | |
| 4. | | | | | | | |
| 5. | A-78 UR-31 | Marshal Wallace | 3 | 7/9 | | | |
| 6. | | | | | | | |
| 7. | O-51 MEDIC 1 | Remington Becker | 1 | 7/3 | | | |
| 8. | O-307 MEDIC 8 | Rick Kelly | 1 | 7/12 | | | |
| 9. | | | | | | | |
| 10. | O-174.52 SOFR | George Libercajt | 1 | 7/7 | | | |
| 11. | | | | | | | |
| 12. | | | | | | | |
| 13. | | | | | | | |
| 14. | | | | | | | |
| 15. | | | | | | | |
| 7. Control Operations | | | | | | | |
| Task: Contain fire spread to the southeast where terrain and fuels allow for high probability of success. Assess fire perimeter progression to the east/southeast at higher elevations. | | | | | | | |
| Purpose: To slow fire progression, provide time for suppression tactics, and continue to prep around critical values. | | | | | | | |
| End state: Minimize fire impacts to critical values including private inholdings and Forest Service infrastructure | | | | | | | |
| 8. Special Instructions | | | | | | | |
| <ul style="list-style-type: none"> In large or long term spike camps use helicopters, boats, or pack stock to deliver portable backcountry latrines and remove human waste if necessary. If camp does not have adequate pack, boat, or air support for human waste management, establish community latrines well away from water sources and common areas. Use human waste bags, if necessary. Ensure hazard mitigations and IWI protocols are in place before taking action. Hose used from Prince Creek to Moore Pt: contaminated with invasive plants. Do not reuse. Backhaul to Moore Pt DP22 and store in "infested hose" area at Moore Pt until decontaminated. | | | | | | | |
| 9. Division / Group Communication Summary | | | | | | | |
| Function | Frequency | System | Channel | Function | Frequency | System | Channel |
| Command Repeater | See Comm Plan | | | Command | See Comm. Plan | | |
| TAC | | | | Air To Ground | See Comm. Plan | | |
| Prepared by (Resource Unit Leader): Name: Gary Duranceau | | | Approved by (Planning Section Chief) Name: Mike Crawford | | | Date 6/28/24 | Time 1900 |

| | | | | | | | |
|--|--|----------------------|---|---------------------------------|--------------------|-------------------|--------------|
| DIVISION ASSIGNMENT LIST | | | 1. Branch II | 2. Division / Group D | Page 1 of 2 | | |
| 3. Incident Name Pioneer | | | 4. Operational Period Date: 06/29/2024 Time: 0700-2100 | | | | |
| 5. Operations Personnel | | | | | | | |
| Operations Chief | Jon Larson / Jeff Bortner (T) | | Division / Group Supervisor | Ben Lippert / Silas Baffa (T) | | | |
| Operations Chief (Plans) | Rob Poyner (T) | | Branch Director | Thom Taylor / Josh Verellen (T) | | | |
| Safety Officer | Matt Broyles / Eric Brown | | Air Attack Supervisor | Chad Bergren | | | |
| 6. Resources Assigned this Period | | | | | | | |
| | Strike Team / Task Force / Resource Designator | Leader | Number Persons | Tentative Last Work Day | Drop Off Pt / Time | Pick Up Pt / Time | |
| 1. | O-183 TFLD | Harley Hamman | 1 | 7/6 | Stehekin | Stehekin | |
| 2. | O-251 TFLD | Aaron Merritt | 1 | 7/3 | Stehekin | Stehekin | |
| 3. | | | | | | | |
| 4. | O-170 THSP | Tanya Neider | 1 | 7/3 | | | |
| 5. | | | | | | | |
| 6. | O-122 HECM | Nick DePanlo | 4 | 7/1 | Stehekin | Stehekin | |
| 7. | | | | | | | |
| 8. | O-147 SMOD LNP CREW 76 | Sara Martinez | 7 | 7/3 | Stehekin | Stehekin | |
| 9. | O-148 SMOD HVP CREW 1 | Brent Webb | 10 | 7/3 | Stehekin | Stehekin | |
| 10. | O-278 SMOD Crew 84 | Geoff Hibbs | 3 | 7/10 | Stehekin | Stehekin | |
| 11. | **O-218 WFM2 Olympic | Jonah Gray | 10 | 7/6 | Stehekin | Stehekin | |
| 12. | | | | | | | |
| 13. | O-184 FELB | Marty Cozart | 1 | 7/6 | Stehekin | Stehekin | |
| 14. | O-186 FMOD Kintner Timber | Cory Kintner | 2 | 7/6 | Stehekin | Stehekin | |
| 15. | O-185 FMOD Brothers Fire | Levi Merritt | 2 | 7/6 | Stehekin | Stehekin | |
| 16. | | | | | | | |
| 17. | | | | | | | |
| 18. | | | | | | | |
| 19. | | | | | | | |
| 7. Control Operations Task: Continue construction of contingency lines around the community of Stehekin. Purpose: Minimize fire impacts to critical values including private inholdings, the community of Stehekin, and Forest Service infrastructure. End state: Critical values including private inholdings, the community of Stehekin, and Forest Service infrastructure are not impacted by the Pioneer fire, while minimizing fire impacts and acres burned utilizing historic wildfire control features and natural barriers. | | | | | | | |
| 8. Special Instructions | | | | | | | |
| <ul style="list-style-type: none"> In large or long term spike camps use helicopters, boats, or pack stock to deliver portable backcountry latrines and remove human waste if necessary. If camp does not have adequate pack, boat, or air support for human waste management, establish community latrines well away from water sources and common areas. Use human waste bags, if necessary. All operational personnel working on USFS lands will need to conduct a thorough inspection for invasive species seeds on boots including laces, clothing, and gear prior to entering NPS lands. Only fresh (direct from the cache) hose should be utilized on NPS lands to prevent the transport of invasive species seeds. Hose used on USFS lands should not be used on NPS lands and hose used on NPS lands should not be used on USFS lands to prevent the spread of invasives species seeds. Cargo loads being transported onto NPS lands should be inspected for invasive weed seed prior to flight. Ensure hazard mitigations and IWI protocols are in place before taking action. NPS Resource Avoidance Area Flagging is yellow with red polka dots. Contact NPS READs before working in areas where this flagging is present. ** Denotes available for Initial Attack | | | | | | | |
| 9. Division / Group Communication Summary | | | | | | | |
| Function | Frequency | System | Channel | Function | Frequency | System | Channel |
| Command Repeater | See Comm Plan | | | Command | See Comm. Plan | | |
| TAC | | | | Air To Ground | See Comm. Plan | | |
| Prepared by (Resource Unit Leader): Name: Gary Duranceau | | | Approved by (Planning Section Chief) Name: Mike Crawford | | Date | 6/28/24 | Time 1900 |

| | | | | | | | | | | |
|---|--|-------------------------------|---|--|---|-------------------------|---------------------------------|-----------------|-------------------|---------|
| DIVISION ASSIGNMENT LIST | | | 1. Branch II | | 2. Division / Group D | | Page 2 of 2 | | | |
| 3. Incident Name Pioneer | | | 4. Operational Period Date: 06/29/2024 Time: 0700-2100 | | | | | | | |
| 5. Operations Personnel | | | | | | | | | | |
| Operations Chief | | Jon Larson / Jeff Bortner (T) | | | Division / Group Supervisor | | Ben Lippert / Silas Baffa (T) | | | |
| Operations Chief (Plans) | | Rob Poyner (T) | | | Branch Director | | Thom Taylor / Josh Verellen (T) | | | |
| Safety Officer | | Matt Broyles / Eric Brown | | | Air Attack Supervisor | | Chad Bergren | | | |
| 6. Resources Assigned this Period | | | | | | | | | | |
| | Strike Team / Task Force / Resource Designator | | Leader | | Number Persons | Tentative Last Work Day | Drop Off Pt / Time | | Pick Up Pt / Time | |
| 20. | O-125 READ | | Cedar Drake | | 1 | 7/1 | Stehekin | | Stehekin | |
| 21. | O-166 REAF | | Jordan Spaak | | 1 | 7/6 | Stehekin | | Stehekin | |
| 22. | O-235 REAF | | Cade Simpson | | 1 | 7/7 | Stehekin | | Stehekin | |
| 23. | O-167 ARCH | | Jason Wright | | 1 | 7/12 | Stehekin | | Stehekin | |
| 24. | O-168 ARCH | | Ernest Wingate | | 1 | 7/6 | Stehekin | | Stehekin | |
| 25. | | | | | | | | | | |
| 26. | O-165 REMS 2 | | Brayden Kirk | | 4 | 7/10 | Stehekin | | Stehekin | |
| 27. | O-174.79 MEDL (T) | | Kevin Smith | | 1 | 7/2 | Stehekin | | Stehekin | |
| 28. | | | | | | | | | | |
| 29. | O-174.88 SOFR | | Leo Engleson | | 1 | 7/7 | Stehekin | | Stehekin | |
| 30. | | | | | | | | | | |
| 31. | E-119 Driver | | Stephen Bouche | | 1 | 7/3 | | | | |
| 32. | | | | | | | | | | |
| 33. | | | | | | | | | | |
| 34. | | | | | | | | | | |
| 35. | | | | | | | | | | |
| 7. Control Operations | | | | | | | | | | |
| Task: Continue construction of contingency lines around the community of Stehekin. | | | | | | | | | | |
| Purpose: Minimize fire impacts to critical values including private inholdings, the community of Stehekin, and Forest Service infrastructure. | | | | | | | | | | |
| End state: Critical values including private inholdings, the community of Stehekin, and Forest Service infrastructure are not impacted by the Pioneer fire, while minimizing fire impacts and acres burned utilizing historic wildfire control features and natural barriers. | | | | | | | | | | |
| 8. Special Instructions | | | | | | | | | | |
| <ul style="list-style-type: none"> In large or long term spike camps use helicopters, boats, or pack stock to deliver portable backcountry latrines and remove human waste if necessary. If camp does not have adequate pack, boat, or air support for human waste management, establish community latrines well away from water sources and common areas. Use human waste bags, if necessary. All operational personnel working on USFS lands will need to conduct a thorough inspection for invasive species seeds on boots including laces, clothing, and gear prior to entering NPS lands. Only fresh (direct from the cache) hose should be utilized on NPS lands to prevent the transport of invasive species seeds. Hose used on USFS lands should not be used on NPS lands and hose used on NPS lands should not be used on USFS lands to prevent the spread of invasives species seeds. Cargo loads being transported onto NPS lands should be inspected for invasive weed seed prior to flight. Ensure hazard mitigations and IWI protocols are in place before taking action. NPS Resource Avoidance Area Flagging is yellow with red polka dots. Contact NPS READs before working in areas where this flagging is present. ** Denotes available for Initial Attack. | | | | | | | | | | |
| 9. Division / Group Communication Summary | | | | | | | | | | |
| Function | Frequency | | System | | Channel | Function | Frequency | | System | Channel |
| Command Repeater | | | See Comm Plan | | | Command | See Comm. Plan | | | |
| TAC | | | | | | Air To Ground | See Comm. Plan | | | |
| Prepared by (Resource Unit Leader): Name: Gary Duranceau | | | | | Approved by (Planning Section Chief) Name: Mike Crawford | | | Date 6/28/24 | Time 1900 | |

| | | | | | | | |
|--|--|---|---|---------------------------------|--------------------|-------------------|---------|
| DIVISION ASSIGNMENT LIST | | 1. Branch IV | 2. Division / Group H | | | | |
| 3. Incident Name Pioneer | | 4. Operational Period Date: 06/29/2024 Time: 0700-2100 | | | | | |
| 5. Operations Personnel | | | | | | | |
| Operations Chief | Jon Larson / Jeff Bortner (T) | | Division / Group Supervisor | Matt Ziegler / Steve Abrams (T) | | | |
| Operations Chief (Plans) | Rob Poyner (T) | | Branch Director | Roger Goldman | | | |
| Safety Officer | Matt Broyles / Eric Brown | | Air Attack Supervisor | Chad Bergren | | | |
| 6. Resources Assigned this Period | | | | | | | |
| | Strike Team / Task Force / Resource Designator | Leader | Number Persons | Tentative Last Work Day | Drop Off Pt / Time | Pick Up Pt / Time | |
| 1. | O-112 TFLD | David Ortlund | 1 | 7/1 | | | |
| 2. | O-113 TFLD (T) | Gavin Young | 1 | 7/1 | | | |
| 3. | | | | | | | |
| 4. | E-101 SKG2 NW Diesel Dudes | John Lotze | 2 | 7/3 | | | |
| 5. | E-102 SKG2 Dukes Equipment | Matt Sveen | 2 | 6/30 | | | |
| 6. | E-103 MBM2 Marcon Timber | Dave Landes | 2 | 7/1 | | | |
| 7. | E-104 MBM2 Havillah Logging | Albert Johnson | 2 | 7/1 | | | |
| 8. | E-105 MBM2 Justin Pitts | Justin Pitts | 2 | 7/1 | | | |
| 9. | | | | | | | |
| 10. | O-267 SOFR | Tom Talbot | 1 | 7/10 | | | |
| 11. | | | | | | | |
| 12. | | | | | | | |
| 13. | | | | | | | |
| 14. | | | | | | | |
| 15. | | | | | | | |
| 16. | | | | | | | |
| 17. | | | | | | | |
| 18. | | | | | | | |
| 19. | | | | | | | |
| 20. | | | | | | | |
| 7. Control Operations Task: Complete a comprehensive inventory of critical values, proposed control line options to protect those values and the risk to responders associated with those actions in SA4. Purpose: To analyze the strategy as probability vs success. End state: A long term durable strategic plan for the Pioneer Fire. | | | | | | | |
| 8. Special Instructions | | | | | | | |
| <ul style="list-style-type: none"> In large or long term spike camps use helicopters, boats, or pack stock to deliver portable backcountry latrines and remove human waste if necessary. If camp does not have adequate pack, boat, or air support for human waste management, establish community latrines well away from water sources and common areas. Use human waste bags, if necessary. Ensure hazard mitigations and IWI protocols are in place before taking action. Draft sites must be reviewed by READ. | | | | | | | |
| 9. Division / Group Communication Summary | | | | | | | |
| Function | Frequency | System | Channel | Function | Frequency | System | Channel |
| Command Repeater | See Comm Plan | | | Command | See Comm. Plan | | |
| TAC | | | | Air To Ground | See Comm. Plan | | |
| Prepared by (Resource Unit Leader): Name: Gary Duranceau | | | Approved by (Planning Section Chief) Name: Mike Crawford | | Date 6/28/24 | Time 1900 | |

| | | | | | | | |
|--|--|---|---|--------------------------------|---------------------|---------------------|--------------|
| DIVISION ASSIGNMENT LIST | | 1. Branch V | 2. Division / Group S | | Page 1 of 2 | | |
| 3. Incident Name Pioneer | | 4. Operational Period Date: 06/29/2024 Time: 0700-2100 | | | | | |
| 5. Operations Personnel | | | | | | | |
| Operations Chief | Jon Larson / Jeff Bortner (T) | | Division / Group Supervisor | Linda Gibson / Holt Jaeger (T) | | | |
| Operations Chief (Plans) | Rob Poyner (T) | | Branch Director | Alfred Wiehl | | | |
| Safety Officer | Matt Broyles / Eric Brown | | Air Attack Supervisor | Chad Bergren | | | |
| 6. Resources Assigned this Period | | | | | | | |
| | Strike Team / Task Force / Resource Designator | Leader | Number Persons | Tentative Last Work Day | Drop Off Pt / Time | Pick Up Pt / Time | |
| 1. | O-110 TFLD | Shane Clifton | 1 | 6/30 | Safe Harbor | Safe Harbor | |
| 2. | O-111 TFLD (T) | Lars Olson | 1 | 6/30 | Camp 4 Spike | Camp 4 Spike | |
| 3. | O-178 TFLD | Andrew Schaffran | 1 | 7/9 | | | |
| 4. | O-249 TFLD (T) | Mark Harper | 1 | 7/9 | | | |
| 5. | O-126 FMOD Fire Contracting Serv. | Ethan Wilson | 2 | 7/1 | Camp 4 Spike | Camp 4 Spike | |
| 6. | O-130 FELB | Rob Winkler | 1 | 7/2 | Camp 4 Spike | Camp 4 Spike | |
| 7. | | | | | | | |
| 8. | **C-10 CR2I Methow Valley IA | Benjamin Boucher | 23 | 6/29 | Safe Harbor | Safe Harbor | |
| 9. | **C-18 CR2I Colville | Jacob Morse | 21 | 7/6 | Camp 4 Spike | Camp 4 Spike | |
| 10. | | | | | | | |
| 11. | **E-118 ENG6 Little Pend Oreille | Thomas Boggs | 3 | 7/1 | Camp 4 Spike | Camp 4 Spike | |
| 12. | E-118 HEQB | Dillon Bigler | 1 | 7/1 | Camp 4 Spike | Camp 4 Spike | |
| 13. | E-118 HEQB (T) | Pedro Gomez | 1 | 7/1 | Camp 4 Spike | Camp 4 Spike | |
| 14. | | | | | | | |
| 15. | E-73 WTS1 Strand Tenders | Wade Strand | 1 | 7/11 | Camp 4 Spike | Camp 4 Spike | |
| 16. | E-74 WTS2 MVP Team | Dale Conrad | 1 | 7/12 | | | |
| 17. | E-75 WTS2 David Rains | Ron Laymance | 1 | 6/30 | | | |
| 18. | E-76 WTS2 Mountain View Wildfire | Wick Fife | 1 | 7/1 | | | |
| 19. | E-78 WTS2 King Hydroseeding | Don Warden | 1 | 7/10 | Camp 4 Spike | Camp 4 Spike | |
| 20. | E-83 WTS2 King Hydroseeding | Joe Ivie | 1 | 7/11 | | | |
| 21. | E-156 WTS2 King Hydroseeding | Wes Bodenhamer | 1 | 7/8 | | | |
| 22. | | | | | | | |
| 23. | | | | | | | |
| 7. Control Operations Task: Implementation of control from South Navaree CG to Lake Chelan. Increase ingress and egress to the fire area. Purpose: To establish a barrier to fire to the east of Safety Harbor Creek. End state: Control line anchored from South Navaree CG to Lake Chelan. | | | | | | | |
| 8. Special Instructions <ul style="list-style-type: none"> • Ensure hazard mitigations and IWI protocols are in place before taking action. • ** Denotes available for Initial Attack | | | | | | | |
| 9. Division / Group Communication Summary | | | | | | | |
| Function | Frequency | System | Channel | Function | Frequency | System | Channel |
| Command Repeater | See Comm Plan | | | Command | See Comm. Plan | | |
| TAC | | | | Air To Ground | See Comm. Plan | | |
| Prepared by (Resource Unit Leader): Name: Gary Duranceau | | | Approved by (Planning Section Chief) Name: Mike Crawford | | | Date 6/28/24 | Time 1900 |

| | | | | | | |
|--|--|----------------------|---|---------------------------------|---------------------|---------------------|
| DIVISION ASSIGNMENT LIST | | | 1. Branch V | 2. Division / Group S | Page 2 of 2 | |
| 3. Incident Name Pioneer | | | 4. Operational Period Date: 06/29/2024 Time: 0700-2100 | | | |
| 5. Operations Personnel | | | | | | |
| Operations Chief | Jon Larson / Jeff Bortner (T) | | Division / Group Supervisor | Linda Gibson / Holt Jaeger (T) | | |
| Operations Chief (Plans) | Rob Poyner (T) | | Branch Director | Alfred Wiehl | | |
| Safety Officer | Matt Broyles / Eric Brown | | Air Attack Supervisor | Chad Bergren | | |
| 6. Resources Assigned this Period | | | | | | |
| | Strike Team / Task Force / Resource Designator | Leader | Number Persons | Tentative Last Work Day | Drop Off Pt / Time | Pick Up Pt / Time |
| 24. | O-43 REMS1 | Ray Storm | 5 | 7/9 | Camp 4 Spike | Camp 4 Spike |
| 25. | | | | | | |
| 26. | O-141 SOFR | Kevin Pfister | 1 | 7/2 | Camp 4 Spike | Camp 4 Spike |
| 27. | | | | | | |
| 28. | E-18 UTV | | | | | |
| 29. | E-93 UTV | | | | | |
| 30. | E-94 UTV | | | | | |
| 31. | E-148 UTV | | | | | |
| 32. | E-149 UTV | | | | | |
| 33. | | | | | | |
| 34. | | | | | | |
| 35. | | | | | | |
| 36. | | | | | | |
| 37. | | | | | | |
| 38. | | | | | | |
| 39. | | | | | | |
| 40. | | | | | | |
| 41. | | | | | | |
| 42. | | | | | | |
| 43. | | | | | | |
| 44. | | | | | | |
| 45. | | | | | | |
| 46. | | | | | | |
| 47. | | | | | | |
| 7. Control Operations Task: Implementation of control from South Navaree CG to Lake Chelan. Increase ingress and egress to the fire area. Purpose: To establish a barrier to fire to the east of Safety Harbor Creek. End state: Control line anchored from South Navaree CG to Lake Chelan. | | | | | | |
| 8. Special Instructions | | | | | | |
| <ul style="list-style-type: none"> • Ensure hazard mitigations and IWI protocols are in place before taking action. • ** Denotes available for Initial Attack | | | | | | |
| 9. Division / Group Communication Summary | | | | | | |
| Function | Frequency | System | Channel | Function | Frequency | System |
| Command Repeater | See Comm Plan | | | Command | See Comm. Plan | |
| TAC | | | | Air To Ground | See Comm. Plan | |
| Prepared by (Resource Unit Leader): Name: Gary Duranceau | | | Approved by (Planning Section Chief) Name: Mike Crawford | | Date 6/28/24 | Time 1900 |

| | | | | | | |
|--|--|---|---|------------------------------------|--------------------|-------------------|
| DIVISION ASSIGNMENT LIST | | 1. Branch V | 2. Division / Group Contingency/Roads | | Page 1 of 2 | |
| 3. Incident Name Pioneer | | 4. Operational Period Date: 06/29/2024 Time: 0700-2100 | | | | |
| 5. Operations Personnel | | | | | | |
| Operations Chief | Jon Larson / Jeff Bortner (T) | | Division / Group Supervisor | Jennifer Harris / Eric Metzger (T) | | |
| Operations Chief (Plans) | Rob Poyner (T) | | Branch Director | Alfred Wiehl | | |
| Safety Officer | Matt Broyles / Eric Brown | | Air Attack Supervisor | Chad Bergren | | |
| 6. Resources Assigned this Period | | | | | | |
| | Strike Team / Task Force / Resource Designator | Leader | Number Persons | Tentative Last Work Day | Drop Off Pt / Time | Pick Up Pt / Time |
| 1. | O-83 TFLD | Mark Lewis | 1 | 6/29 | | |
| 2. | O-106 TFLD | Andy Hall | 1 | 6/29 | | |
| 3. | **O-239 TFLD | Kory Garrie | 1 | 7/9 | | |
| 4. | O-245 TFLD | Noah Daniels | 1 | 7/10 | | |
| 5. | O-114 TFLD (T) | TJ Whitehall | 1 | 7/1 | | |
| 6. | **O-257 TFLD (T) | Craig McDonald | 1 | 7/9 | | |
| 7. | | | | | | |
| 8. | O-115 HEQB | Garrett Hanson | 1 | 6/30 | | |
| 9. | O-241 HEQB | Jason Green | 1 | 7/9 | | |
| 10. | O-242 HEQB | Travis Parker | 1 | 7/9 | | |
| 11. | O-243 HEQB | Everardo Santillan | 1 | 7/8 | | |
| 12. | O-116 HEQB (T) | Tyler Meyer | 1 | 6/30 | | |
| 13. | O-117 HEQB (T) | Ian Fox | 1 | 6/30 | | |
| 14. | | | | | | |
| 15. | **C-19 CR2I Cle Elum RD | Cris Machado | 18 | 7/8 | | |
| 16. | C-23 CR2I SRV1 | Jaime Medrano | 23 | 7/11 | | |
| 17. | | | | | | |
| 18. | **E-117 ENG6 Wenatchee River | Nicholas Gonzales | 5 | 7/3 | | |
| 19. | | | | | | |
| 20. | E-157 WTS2 Pine Mountain Exc. | Bob Goss | 1 | 7/8 | | |
| 21. | E-172 WTS2 Upper Valley | Joseph | 1 | 7/12 | | |
| 22. | E-173 WTS2 Ridgetop Iron | Tim Whitehurst | 1 | 7/12 | | |
| 23. | E-174 WTS2 Upper Valley | Jim Smith | 1 | 7/12 | | |
| 24. | E-154 SKG2 Western | Rick Lauman | 2 | 7/8 | | |
| 25. | E-155 SKG2 Mountain View | Shawn Beaman | 2 | 7/8 | | |
| 26. | | | | | | |
| 7. Control Operations Task: Scout proposed control lines at Oss Peak and Johnson Creek. Assess structures from Deer Point to Mitchel Creek. Implement control lines from H41 to DP76. Purpose: To protect critical values at risk. End state: To have established control lines in place that correspond to Pioneer Fire strategic plan. | | | | | | |
| 8. Special Instructions | | | | | | |
| <ul style="list-style-type: none"> Ensure hazard mitigations and IWI protocols are in place before taking action. Contingency resources working DIV H: Draft sites must be reviewed by READ. ** Denotes available for Initial Attack. | | | | | | |
| 9. Division / Group Communication Summary | | | | | | |
| Function | Frequency | System | Channel | Function | Frequency | System |
| Command Repeater | See Comm Plan | | | Command | See Comm. Plan | |
| TAC | | | | Air To Ground | See Comm. Plan | |
| Prepared by (Resource Unit Leader): Name: Gary Duranceau | | | Approved by (Planning Section Chief) Name: Mike Crawford | | Date 6/28/24 | Time 1900 |

| | | | | | | | |
|---|--|---|---|------------------------------------|--------------------|-------------------|---------|
| DIVISION ASSIGNMENT LIST | | 1. Branch V | 2. Division / Group Contingency/Roads | | Page 2 of 2 | | |
| 3. Incident Name Pioneer | | 4. Operational Period Date: 06/29/2024 Time: 0700-2100 | | | | | |
| 5. Operations Personnel | | | | | | | |
| Operations Chief | Jon Larson / Jeff Bortner (T) | | Division / Group Supervisor | Jennifer Harris / Eric Metzger (T) | | | |
| Operations Chief (Plans) | Rob Poyner (T) | | Branch Director | Alfred Wiehl | | | |
| Safety Officer | Matt Broyles / Eric Brown | | Air Attack Supervisor | Chad Bergren | | | |
| 6. Resources Assigned this Period | | | | | | | |
| | Strike Team / Task Force / Resource Designator | Leader | Number Persons | Tentative Last Work Day | Drop Off Pt / Time | Pick Up Pt / Time | |
| 27. | E-92 DZR3 Batchelor Excavation | Al Steele | 2 | 6/30 | | | |
| 28. | E-100 DZR4 Douglas Logging | Steve Douglas | 2 | 7/1 | | | |
| 29. | E-143 EXC2 Delange Enterprises | Pete Delange | 2 | 7/5 | | | |
| 30. | E-71 GRD2 Scotts Excavating | Mark Rowe | 2 | 7/4 | | | |
| 31. | E-72 GRD2 Scotts Excavating | Wyatt Radke | 2 | 7/13 | | | |
| 32. | E-69 FTRA Morris Forestry | Jake Wilcox | 1 | 7/7 | | | |
| 33. | E-151 MBM2 Dukes | Chris Boles | 2 | 7/8 | | | |
| 34. | E-152 MBM2 Axsus | John Cisneros | 2 | 7/10 | | | |
| 35. | | | | | | | |
| 36. | O-68 MEDIC 2 | Joel Bower | 1 | 7/3 | | | |
| 37. | O-76 MEDIC 5 | Brian Linacre | 1 | 7/7 | | | |
| 38. | O-271 MEDIC 7 | Steve Drab | 1 | 7/11 | | | |
| 39. | | | | | | | |
| 40. | O-189 SOF2 | John Nickey | 1 | 7/1 | | | |
| 41. | | | | | | | |
| 42. | E-19 UTV | | | | | | |
| 43. | E-44 UTV | | | | | | |
| 44. | | | | | | | |
| 45. | | | | | | | |
| 7. Control Operations | | | | | | | |
| Task: Scout proposed control lines at Oss Peak and Johnson Creek. Assess structures from Deer Point to Mitchel Creek. Implement control lines from H41 to DP76. | | | | | | | |
| Purpose: To protect critical values at risk. | | | | | | | |
| End state: To have established control lines in place that correspond to Pioneer Fire strategic plan. | | | | | | | |
| 8. Special Instructions | | | | | | | |
| <ul style="list-style-type: none"> • Ensure hazard mitigations and IWI protocols are in place before taking action. • Contingency resources working DIV H: Draft sites must be reviewed by READ. • ** Denotes available for Initial Attack | | | | | | | |
| 9. Division / Group Communication Summary | | | | | | | |
| Function | Frequency | System | Channel | Function | Frequency | System | Channel |
| Command Repeater | See Comm Plan | | | Command | See Comm. Plan | | |
| TAC | | | | Air To Ground | See Comm. Plan | | |
| Prepared by (Resource Unit Leader): Name: Gary Duranceau | | | Approved by (Planning Section Chief) Name: Mike Crawford | | Date 6/28/24 | Time 1900 | |

| | | | | | | | |
|--|--|---|---|-------------------------|--------------------|-------------------|--------------|
| DIVISION ASSIGNMENT LIST | | 1. Branch V | 2. Division / Group Staging | | | | |
| 3. Incident Name Pioneer | | 4. Operational Period Date: 06/29/2024 Time: 0700-2100 | | | | | |
| 5. Operations Personnel | | | | | | | |
| Operations Chief | Jon Larson / Jeff Bortner (T) | | Division / Group Supervisor | Jon Merager | | | |
| Operations Chief (Plans) | Rob Poyner (T) | | Branch Director | Alfred Wiehl | | | |
| Safety Officer | Matt Broyles / Eric Brown | | Air Attack Supervisor | Chad Bergren | | | |
| 6. Resources Assigned this Period | | | | | | | |
| | Strike Team / Task Force / Resource Designator | Leader | Number Persons | Tentative Last Work Day | Drop Off Pt / Time | Pick Up Pt / Time | |
| 1. | E-170 DUMP Boulder Creek | Mitch Jack | 1 | 7/12 | | | |
| 2. | | | | | | | |
| 3. | | | | | | | |
| 4. | | | | | | | |
| 5. | | | | | | | |
| 6. | | | | | | | |
| 7. | | | | | | | |
| 8. | | | | | | | |
| 9. | | | | | | | |
| 10. | | | | | | | |
| 11. | | | | | | | |
| 12. | | | | | | | |
| 13. | | | | | | | |
| 14. | | | | | | | |
| 15. | | | | | | | |
| 16. | | | | | | | |
| 17. | | | | | | | |
| 18. | | | | | | | |
| 19. | | | | | | | |
| 20. | | | | | | | |
| 7. Control Operations Task: Remain ready and available for divisions as needed. Purpose: To assist divisions as needed to complete missions as appropriate. End state: Support suppression efforts as needed to project communities. | | | | | | | |
| 8. Special Instructions | | | | | | | |
| 9. Division / Group Communication Summary | | | | | | | |
| Function | Frequency | System | Channel | Function | Frequency | System | Channel |
| Command Repeater | See Comm Plan | | | Command | See Comm. Plan | | |
| TAC | | | | Air To Ground | See Comm. Plan | | |
| Prepared by (Resource Unit Leader): Name: Gary Duranceau | | | Approved by (Planning Section Chief) Name: Mike Crawford | | | Date 6/28/24 | Time 1900 |

| | | | | | | | |
|---|---|-------------------------------|---|-----------------------------|------------------------------------|--------------------------------|-------------------|
| DIVISION ASSIGNMENT LIST | | | 1. Branch | | 2. Division / Group BOAT | | |
| 3. Incident Name Pioneer | | | 4. Operational Period Date: 06/29/2024 Time: 0700-2100 | | | | |
| 5. Operations Personnel | | | | | | | |
| Operations Chief | | Jon Larson / Jeff Bortner (T) | | Division / Group Supervisor | | Nate Crawford / Seth Ellis (T) | |
| Operations Chief (Plans) | | Rob Poyner (T) | | Branch Director | | | |
| Safety Officer | | Matt Broyles / Eric Brown | | Air Attack Supervisor | | Chad Bergren | |
| 6. Resources Assigned this Period | | | | | | | |
| Strike Team / Task Force / Resource Designator | | Leader | Number Persons | Tentative Last Work Day | Drop Off Pt / Time | | Pick Up Pt / Time |
| 1. | O-161 TFLD Boat Coordinator | Cameron Chambers | 1 | 7/3 | Lucerne | | Lucerne |
| 2. | O-50 TFLD | Todd Olson | 1 | 6/30 | Lucerne | | Lucerne |
| 3. | O-160 TFLD | Brian Turner | 1 | 7/3 | ICP | | ICP |
| 4. | O-248 TFLD (T) | Jason Ward | 1 | 7/9 | Lucerne | | Lucerne |
| 5. | O-263 TFLD (T) | Aaron Pedersen | 1 | 7/12 | ICP | | ICP |
| 6. | O-163 HEQB (T) | Emma Ahlrichs | 1 | 7/3 | Lucerne | | Lucerne |
| 7. | | | | | | | |
| 8. | E-1 TBOT WA-NCP NPS | Sonja Shaw | 1 | | Stehekin | | Stehekin |
| 9. | E-3 TBOT Chelan Co. F&R#7 | Chris Colbert | 1 | | Lucerne | | Lucerne |
| 10. | E-12 TBOT WA-OWF Chelan RD | Dick Gordon | 1 | | FS Dock | | FS Dock |
| 11. | E-91 TBOT DNR Mud Puppy | Curt Hekkila | 1 | | Lucerne | | Lucerne |
| 12. | E-98 TBOT Chelan County Sheriffs | Rich Magnussen | 1 | | FS Dock | | FS Dock |
| 13. | E-43 TBOT Llama Boat | Gayle Thomas | 1 | | FS Dock | | FS Dock |
| 14. | E-120 TBOT Pilgram | Justin Gavin | 1 | 7/11 | Lucerne | | Lucerne |
| 15. | | | | | | | |
| 16. | O-136 MEDIC 6 | Steve Medina | 1 | 7/8 | Lucerne | | Lucerne |
| 17. | O-152 EMT 1 | Ivan Huld | 1 | 7/1 | Lucerne | | Lucerne |
| 18. | | | | | | | |
| 19. | | | | | | | |
| 20. | | | | | | | |
| 21. | | | | | | | |
| 22. | | | | | | | |
| 23. | | | | | | | |
| 7. Control Operations | | | | | | | |
| Task: Contain fire spread to the southwest where terrain and fuels allow for high probability of success. Assess fire perimeter progression to the west/southwest at higher elevations. | | | | | | | |
| Purpose: To slow fire progression, provide time for suppression tactics, and prep around critical values. | | | | | | | |
| End state: Minimize fire impacts to critical values including private inholdings and Forest Service infrastructure | | | | | | | |
| 8. Special Instructions | | | | | | | |
| <ul style="list-style-type: none"> In large or long-term spike camps use helicopters, boats, or pack stock to deliver portable backcountry latrines and remove human waste if necessary. If camp does not have adequate pack, boat, or air support for human waste management, establish community latrines well away from water sources and common areas. Use human waste bags, if necessary. Ensure hazard mitigations and IWI protocols are in place before taking action. | | | | | | | |
| 9. Division / Group Communication Summary | | | | | | | |
| Function | Frequency | System | Channel | Function | Frequency | System | Channel |
| Command Repeater | See Comm Plan | | | Command | See Comm. Plan | | |
| TAC | | | | Air To Ground | See Comm. Plan | | |
| Prepared by (Resource Unit Leader): Name: Gary Duranceau | | | Approved by (Planning Section Chief) Name: Mike Crawford | | | Date 6/28/24 | Time 1900 |

| AIR OPERATIONS SUMMARY ICS-220 | | | | | | | | | | Time Prepared | | Date Prepared | | Prepared By | | | | | | | | | | | | | |
|---|--|---|--|---|--|---|--|---|--|--|--|---|--|---|--|---|--|-------------------------------|--|-----------|--|-------|--|---|--|-----------------------------|--|
| Incident Name / Number Pioneer / WA-SES-000173 | | Sunrise 05:05 | | Sunset 21:03 | | Airport S10 | | Pumpkin 21:33 | | 18:00 Shutdown 21:00 | | 6/28/2024 6/29/2024 | | Mark Hocken AOB Operational Period - Time 0700-2100 | | | | | | | | | | | | | |
| General Remarks, Safety Notes, Hazards, Air Operations Special Equipment, etc. | | | | | | | | | | Helibase Information | | Operational Period - Date | | Medivac Ship Information | | | | | | | | | | | | | |
| <p>*Order All Aircraft through Command to Helibase. *Sanitize Buckets before changing water sources. *Clear drop area/line before initiating drop sequence. *Be cognizant of all overhead and environmental hazards while working with Aircraft. *All GPS is to be collected in DMM *** WINDS: return to helibase if winds become unmanageable.</p> <p>*Aviation daily cost to: 2024.pioneer.finance@firenet.gov *Aviation daily cost to: pioneerhelibase2024@gmail.com</p> | | | | | | | | | | Pioneer/ Helibase Valley Helibase Location 47 51.96 N 119 56.56 W | | TFR (A-74) Surface to 10,000' In Effect - 24 Hours Helispots H1 48 10.755N / 120 31.803W H5 48 12.162N / 120 35.447W H10 48 14.050N / 120 36.461W H12 48 13.325N / 120 35.908W H14 (Stehkin AP) 48 20.75N / 120 43.25W H15 48 08.754N / 120 29.813W H16 48 07.74N / 120 29.55W H25 47 59.212N / 120 16.526W | | 4/4350 TFR Freq 123.4000 | | Short Haul 125CL call helibase to launch Make/Model AS-350B3e Location: Chelan Request Procedure for This Aircraft: Communications on Command, Short-Haul North Casade N-125CL Order through Helibase/CWICC, CWICC (509) 884-3473 x 2 40 min to 1 hour response on to 2100 | | | | | | | | | | | |
| Pioneer HB (Chelan) Valley HB Phone (Methow) (971) 727-7255 | | Pioneer HB (Chelan) Valley HB Phone (Methow) (971) 727-7255 | | Pioneer HB (Chelan) Valley HB Phone (Methow) (971) 727-7255 | | Pioneer HB (Chelan) Valley HB Phone (Methow) (971) 727-7255 | | Pioneer HB (Chelan) Valley HB Phone (Methow) (971) 727-7255 | | Pioneer HB (Chelan) Valley HB Phone (Methow) (971) 727-7255 | | Pioneer HB (Chelan) Valley HB Phone (Methow) (971) 727-7255 | | Pioneer HB (Chelan) Valley HB Phone (Methow) (971) 727-7255 | | | | | | | | | | | | | |
| Incident Frequencies | | RX | | Tone | | TX | | Tone | | AM/FM | | Position | | Name | | Phone | | EQUIPMENT/SUPPLIES | | | | | | | | | |
| Air to Air Primary (A-8) | | 123.4000 | | 123.4000 | | 123.4000 | | AM | | AM | | AOBD (Planning) | | Mark Hocken | | (541) 261-1085 | | Com (Chelan) Trailer E-20 | | | | | | | | | |
| Air to Air Secondary (A-9) | | 118.2750 | | 118.2750 | | 118.2750 | | AM | | AM | | AOBD (Field) | | Ted Hass | | (541) 646-1318 | | Hand Wash Station E-47 | | | | | | | | | |
| A/G Pri Tactical (A-10) | | 169.1500 | | 169.1500 | | 169.1500 | | FM | | FM | | ASGS | | Dave Moore | | (513) 616-9192 | | Water Tender E-77 | | | | | | | | | |
| A/G Sec Operational (A-11) | | 168.4000 | | 168.4000 | | 168.4000 | | FM | | FM | | ASGS-t | | Ben Thayer | | (208) 830-1636 | | Water Tender E-14 | | | | | | | | | |
| TOLC | | 166.6125 | | 166.6125 | | 166.6125 | | FM | | FM | | HEBM Pioneer | | Lance Jorg | | (971) 291-7443 | | Com (Valley) Trailer E-150 | | | | | | | | | |
| DECK | | 163.1000 | | 163.1000 | | 163.1000 | | FM | | FM | | HEBM Valley | | Randy McIandress | | (509) 668-7243 | | Water Tender Valley E-158 | | | | | | | | | |
| COMMAND | | See ICS 205 Communications Plan | | See ICS 205 Communications Plan | | See ICS 205 Communications Plan | | FM | | FM | | ATGS | | Jerry Messinger | | (541) 306-0907 | | | | | | | | | | | |
| AIR GUARD | | 168.6250 | | 168.6250 | | 168.6250 | | 110.9 | | 110.9 | | HLCO | | Chad Bergren | | (541) 219-2594 | | | | | | | | | | | |
| VMED 29 | | 155.3475 | | 155.3475 | | 155.3475 | | 156.7 | | 156.7 | | HLCO t | | Tim Beck | | (520) 238-1551 | | | | | | | | | | | |
| | | | | | | | | | | | | Short Haul NC 5CL | | John Podlewaitte | | (208) 830-4436 | | | | | | | | | | | |
| | | | | | | | | | | | | UAS | | Marshall Wallace | | (509) 670-6365 | | | | | | | | | | | |
| | | | | | | | | | | | | HLCO | | Jamie Lilenthal | | (541) 529-9492 | | | | | | | | | | | |
| | | | | | | | | | | | | CWICC | | Aircraft Desk | | (509) 884-3473 x2 | | | | | | | | | | | |
| | | | | | | | | | | | | UAO | | Cory Dolberry | | (509) 668-2801 | | | | | | | | | | | |
| | | | | | | | | | | HELICOPTERS - Assigned | | | | | | | | | | | | | | | | | |
| FAA # | | TYPE | | Make/Model | | Helibase | | Start | | Avail | | Remarks | | FAA # | | TYPE | | Make/Model | | Airport | | Avail | | Remarks | | | |
| HB-16FH (A-22) | | 1 | | UH-60 | | Valley | | 0800 | | 0900 | | BKT/LL | | H-205TK | | 2 | | Bell 205A | | Chelan | | 0900 | | BKT/LL call CWICC | | | |
| HB-161KA (A-24) | | 1 | | K-1200 | | Valley | | 0800 | | 0900 | | BKT/LL | | HB-344RA (A-45) | | 1 | | CH-47D | | Valley | | 0900 | | BKT/LL lend/lease to Wenatchee CWICC IA Fire | | | |
| H-811KA | | 2 | | Bell B-212HP | | Chelan | | 0800 | | 0900 | | BKT/LL EITA midday | | | | | | | | | | | | | | | |
| H-669H | | 2 | | Bell 205 A1 +++ | | Chelan | | 0800 | | 0900 | | BKT/LL/Recon | | | | | | | | | | | | | | | |
| H-684H (A-46) | | 3 | | 407 | | Chelan | | 0800 | | 0900 | | BKT/LL/Recon/HLCO | | | | | | | | | | | | | | | |
| H-544AS (A-60) | | 3 | | AS350B3 | | Chelan | | 0800 | | 0900 | | HLCO/Recon | | | | | | | | | | | | | | | |
| H-407RL (A-1) | | 3 | | 407 | | Chelan | | 0800 | | 0900 | | Short Haul, recon, | | | | | | | | | | | | | | | |
| H-125CL | | 3 | | AS350B3e | | Wenatchee | | 0800 | | 0900 | | Short Haul, Recon | | | | | | | | | | | | | | | |
| | | | | | | | | | | UAS | | | | | | | | | | | | | | | | | |
| Call Sign | | Type | | Make/Model | | Base | | Start | | Avail | | Remarks | | FAA # | | Call Sign | | Make/Model | | Base | | Start | | Avail | | Remarks | |
| UR-31 | | 3 | | AltaX | | Lucerne | | 0600 | | 2200 | | IR/PSD | | N-586DV (A-42) | | 610 | | Commander | | WEN | | 0900 | | 1000 | | Assigned ATGS | |
| | | | | | | | | | | | | | | H-544AS (A-60) | | 4AS | | AS350B3 | | Chelan | | 0800 | | 0900 | | Assigned HLCO | |
| | | | | | | | | | | | | | | N-197GB | | 617 | | Commander | | Wenatchee | | 0900 | | 1000 | | Wenatchee IA (not assigned) | |

INCIDENT RADIO COMMUNICATIONS PLAN (ICS 205)

Controlled Unclassified Information//Basic

| 1. Incident Name: | | 2. Date/Time Prepared: | | 3. Operational Period: | | | | | | |
|--|------|--------------------------------|----------------------------|-----------------------------------|-------------------------------|-------------|----------|-------------|------------------|----------------------------|
| PIONEER | | Date: 06/28/2024 Time: 1600 | | Date/Time From: 06/29/2024 0600 | Date/Time To: 06/30/2024 0600 | | | | | |
| 4. Basic Radio Channel Use: | | | | | | | | | | |
| Zone Group | Ch # | Function | Channel Name/Trunked Radio | Assignment | RX Freq | RX Tone/NAC | TX Freq | TX Tone/NAC | Mode (A,D, or M) | Remarks |
| | 1 | TACTICAL | TAC 1 | DIV A & S | 168.0500 | 123.0 | 168.0500 | 123.0 | A | |
| | 2 | TACTICAL | TAC 2 | DIV D | 168.2000 | 123.0 | 168.2000 | 123.0 | A | |
| | 3 | TACTICAL | TAC 3 | DIV Z | 168.6000 | 123.0 | 168.6000 | 123.0 | A | |
| | 4 | TACTICAL | TAC 4 | DIV H / CONT | 166.7250 | 123.0 | 166.7250 | 123.0 | A | |
| | 5 | TACTICAL | TAC 5 | ROADS | 166.7750 | 123.0 | 166.7750 | 123.0 | A | |
| | 6 | TACTICAL | TAC 6 | BOAT | 168.2500 | 123.0 | 168.2500 | 123.0 | A | |
| | 7 | COMMAND | CMD 7 | ALL | 168.4750 | 123.0 | 165.4000 | 123.0 | A | CHELAN BUTTE |
| | 8 | COMMAND | CMD 8 | ALL | 169.5375 | 123.0 | 164.7125 | 123.0 | A | OLD MAID MT |
| | 9 | COMMAND | CMD 9 | ALL | 170.4500 | 123.0 | 168.1000 | 123.0 | A | MOORE MT |
| | 10 | COMMAND | CMD 10 | ALL | 170.0125 | 123.0 | 165.2500 | 123.0 | A | SLIDE RIDGE |
| | 11 | COMMAND | CMD 11 | ALL | 170.4125 | 123.0 | 165.9625 | 123.0 | A | FOX PEAK |
| | 12 | TACTICAL | A/G PRI | ALL DIVS | 169.1500 | 000.0 | 169.1500 | 000.0 | A | |
| | 13 | AIR TO GROUND | A/G SEC | ALL DIVS | 168.4000 | 000.0 | 168.4000 | 000.0 | A | |
| | 14 | AIR TO GROUND | A/G 3 | ALL DIVS | 166.6125 | 000.0 | 166.6125 | 000.0 | A | TAKE OFF LANDING CHANNEL |
| | 15 | AIR TO GROUND | VMED 29 | ALL DIVS | 155.3475 | 156.7 | 155.3475 | 156.7 | A | AIR EMS COORDINATION |
| | 16 | AIR TO GROUND | AIRGUARD | ALL DIVS | 168.6250 | 000.0 | 168.6250 | 110.9 | A | EMERGENCY AIRCRAFT CONTACT |
| 5. Special Instructions: 24 hour staffing: PIONEER COMMUNICATIONS PHONE NUMBER: (208) 891-7948 / CURRENT CLONE "PIE 6-21" | | | | | | | | | | |
| 6. Prepared By COML | | | | | | | | | | |
| Name: SETH BAUMGARTEN | | | | Signature: <i>Seth Baumgarten</i> | | | | | | |
| ICS 205 | | | | Date/Time: 6/28/24 1600 | | | | | | |
| IAP Page | | | | | | | | | | |

INCIDENT RADIO COMMUNICATIONS PLAN (ICS 205)

Controlled Unclassified Information//Basic

| 1. Incident Name: | | 2. Date/Time Prepared: | | 3. Operational Period: | | | | | | | |
|--|------|--------------------------------|----------------------------|---------------------------------|----------|-------------------------------|----------|--|-------------------|----------------------------|--|
| PIONEER Branch IV & V | | Date: 06/28/2024 Time: 1600 | | Date/Time From: 06/29/2024 0600 | | Date/Time To: 06/30/2024 0600 | | | | | |
| 4. Basic Radio Channel Use: | | | | | | | | | | | |
| Zone Group | Ch # | Function | Channel Name/Trunked Radio | Assignment | RX Freq | RX Tone/NAC | TX Freq | TX Tone/NAC | Mode (A, D, or M) | Remarks | |
| | 1 | TACTICAL | TAC 1 | DIV A & S | 168.0500 | 123.0 | 168.0500 | 123.0 | A | | |
| | 2 | TACTICAL | TAC 2 | DIV D | 168.2000 | 123.0 | 168.2000 | 123.0 | A | | |
| | 3 | TACTICAL | TAC 3 | DIV Z | 168.6000 | 123.0 | 168.6000 | 123.0 | A | | |
| | 4 | TACTICAL | TAC 4 | DIV H / CONT | 166.7250 | 123.0 | 166.7250 | 123.0 | A | | |
| | 5 | TACTICAL | TAC 5 | ROADS | 166.7750 | 123.0 | 166.7750 | 123.0 | A | | |
| | 6 | TACTICAL | TAC 6 | BOAT | 168.2500 | 123.0 | 168.2500 | 123.0 | A | | |
| | 7 | TACTICAL | A/G PRI | ALL DIVS | 169.1500 | 000.0 | 169.1500 | 000.0 | A | | |
| | 8 | AIR TO GROUND | A/G SEC | ALL DIVS | 168.4000 | 000.0 | 168.4000 | 000.0 | A | | |
| | 9 | AIR TO GROUND | A/G 3 | ALL DIVS | 166.6125 | 000.0 | 166.6125 | 000.0 | A | | |
| | 10 | COMMAND | CMD 10 | ALL | 170.0125 | 123.0 | 165.2500 | 123.0 | A | SLIDE RIDGE | |
| | 11 | COMMAND | CMD 11 | ALL | 170.4125 | 123.0 | 165.9625 | 123.0 | A | FOX PEAK | |
| | 12 | COMMAND | CMD 12 | ALL | 170.6875 | 123.0 | 166.575 | 123.0 | A | GOAT MOUNTAIN | |
| | 13 | LOCAL RPTR | GOAT | ALL | 172.3500 | 146.2 | 165.0125 | 118.8 | A | GOAT MOUNTAIN | |
| | 14 | LOCAL RPTR | MCLUR | ALL | 172.3500 | 146.2 | 165.0125 | 103.5 | A | McCLURE MTN | |
| | 15 | AIR TO GROUND | VMED 29 | ALL DIVS | 155.3475 | 156.7 | 155.3475 | 156.7 | A | AIR EMS COORDINATION | |
| | 16 | AIR TO GROUND | AIRGUARD | ALL DIVS | 168.6250 | 000.0 | 168.6250 | 110.9 | A | EMERGENCY AIRCRAFT CONTACT | |
| 5. Special Instructions: | | | | | | | | 24 hour staffing: PIONEER COMMUNICATIONS PHONE NUMBER: (208) 891-7948 / CURRENT CLONE "IV" | | | |
| 6. Prepared By COML | | | | Name: SETH BAUMGARTEN | | | | Signature: <i>Seth Baumgarten</i> | | Date/Time: 6/28/24 1600 | |
| ICS 205 | | | | IAP Page | | | | | | | |

SAFETY MESSAGE

Pioneer Fire

June 29, 2024

Shift: Day

Safety Quote

“A ship is always safe at shore, but that is not what it’s built for.”

~ Albert Einstein ~

Lest We forget:

“...while the ideal level of risk may be zero, a hazard-free work environment is not a reasonable or achievable goal in fire operations.” Red Book, Chapter 7, Pg. 1

In 1929 two firefighters were killed fighting the Camas Creek wildfire. They were found 2 miles from where last seen alive, 2 weeks after going missing. They were found between Squaw Creek and McFarland Creek. This is the area just northeast of our DP 76 and H 45 near the hiking trail in that area.

“Two firefighters were entrapped and died on the Camas Creek Fire, Chelan National Forest (now the Okanogan-Wenatchee NF), Washington. Days before the fatal entrapment, Douglas Ingram (Pacific Northwest Regional Range Manager) had led his fire crew into a clearing to let the fire blow over them as they lay prone. “Ingram whittled and told stories while the fire raged on all sides of their little clearing and finally passed over, leaving the men unharmed.” On August 13, Ingram and young local firefighter Ernani St. Luise of the Chelan National Forest became entrapped together between McFarland and Squaw Creek, two miles from where they were last seen. Their bodies were discovered about two weeks later where they had been entrapped.”

Lessons Learned Center

Some say that you die twice in this world, once when the spark of life leaves your body and a second time when someone says your name out loud for the last time.

Douglas Palmer Ernani Saint Luise Lest We Forget

“The primary means by which we prevent accidents in wildland fire operations is through aggressive risk management..... Through organized, comprehensive, and systematic risk management, we will determine the acceptable level of risk that allows us to provide for safety yet still achieve fire operations objectives.” Red Book, Chapter 7, Pg. 1

Go make it a safe shift

Safety Officers: Matt Broyles, Eric Brown



Human Resource Message Pioneer Fire

Hydration June 29, 2024

Dehydration is the result of the body trying to regulate its temperature naturally through sweating. Maintaining body fluids is essential for sweating. You must hydrate before, during, and after your shift.

Studies conducted on wildland firefighters indicate that during fire suppression activities firefighters need to drink a minimum of one quart of fluid each hour of work.

Before work, you should take extra fluids to prepare for the heat. Drink one or two cups of water, juice, or a sports drink before work.

While working, drink at least one quart of fluid per hour. Drink as much as you can during the lunch break. Water is your greatest need during work in the heat.

Thirst always underestimates fluid needs, so you should drink more than you think you need.

You can assess your hydration by observing the volume, color, and concentration of your urine. Low volumes of dark, concentrated urine or painful urination indicate a serious need for rehydration. Other signs of dehydration include a rapid heart rate, weakness, excessive fatigue, and dizziness.

Rapid loss of several pounds of body weight is a certain sign of dehydration. Rehydrate before returning to work; working in a dehydrated state can lead to serious consequences, including heat stroke, muscle breakdown, and kidney failure.

What are you doing right now to ensure that you are hydrated?

Margaret Dietrich, Human Resource Specialist

FINANCE MESSAGE

Finance Email: 2024.pioneer.finance@firenet.gov

Finance Phone: 484-501-1835

This incident requires electronic documentation. Please email your time to the address above. Scanned PDF's please, no .JPG's. Feel free to call finance for help if needed. Scanners are also available at ICP.

Required Documents

| Overhead, Agency Crews & Cooperators | Contract Resources |
|--|---|
| <p>Finance docs needed: Resource Order, Manifest, Cooperative Agreement, Casual Hire Form w/ECI# (as applicable)</p> <p>Daily: CTRs, Shift Tickets</p> <p>CTRs should be named as: CTR_RO#_YYMMDD-DD (Ex: CTR_O235_240605-07)</p> <p>Electronic CTR available! Use QR code on front cover</p> | <p>Finance docs needed: Resource Order, Manifest, Full Contract/Agreement, Certifications (<i>if required</i>) Pre-Inspection</p> <p>Daily: CTRs, Shift Tickets, receipts (claims, etc.) NOTE: Document travel times and odometer readings</p> <p>Shift Tickets should be named as: ST_RO#_YYMMDD-DD (Ex: ST_E5_240623-27)</p> <p>Electronic shift ticket available! Use QR code on front cover</p> |
| <p>Demob: Signed OF-288; Signed OF-286</p> | <p>Demob: Contractor Evaluations, Shift Tickets, receipt(s) for Addition/Deductions, Post-Inspection, Signed OF-286</p> |
| <p>"H-Pay"- Entitlement to Hazardous Pay Differential (5 CFR 550.904) - Hazard pay MUST be supported by a justification. If justification is not provided, you chance losing your entitlement.</p> | <p>Please call finance regarding issues with your time:</p> <p>No one on List today, any questions for Finance, please email us. Tomorrow we will have a phone number for Team 7 Finance Thank You.</p> |

Incident Name: **Pioneer**

Incident Number: **WA-SES-000173**

Financial codes:

WA DNR – **221-LDW**

DOI – **RZ79**

USDA – **PNRZ79 (1522)**

Please make sure you check in using QR code on the front of the IAP and then email your time daily.

THANK YOU!!

Resource Advice

Lead READ: Brigitte Ranne 509-663-6118, brigitte.ranne@usda.gov

REAF: Hector Rodriguez 509-393-5379, Hector.Rodriguez3@usda.gov

REAF: Eireann Pederson 360-854-8197, eireann.pederson@usda.gov

REAF: Carrissa Camenson 360-899-7147, carissa.camenson@usda.gov



Resource Guidelines

MIST for Spike Camp and Lucerne Forward Operating Base Management

- Employ minimum impact suppression tactics (MIST) where feasible, especially in remote or sensitive areas.
- If spike camps are necessary, use existing, or previously impacted campsites where available. If existing campsites are not available; use your local resource advisor to help identify the most resilient sites in rocky or sandy soils. Avoid camping in wet meadows, along streams, or on lake shores.
- Store food properly so that it is not accessible to wildlife. Consider hanging food in trees at least 15 feet off the ground and 5 feet from the trunk of the tree, or store food in sealable containers. Store food away from the campsite (300 feet is ideal) to reduce the risk of human and bear (and rodent!) conflicts.
- Do not let garbage and food scraps accumulate in camp. All garbage and food scraps need to be removed from the camp ASAP and before leaving the site.
- Minimize disturbance to land in preparing bedding and campfire sites. Do not clear vegetation, trench, or excavate a flat spot to create bedding sites.
- **Do not use nails in trees. Don't** construct camp furniture.
- If a campfire is built for warmth in the evening, build either a pit or mound fire. Use dead and down firewood. Use small diameter wood that burns down more cleanly. Don't burn plastics or aluminum - pack it out with the rest of the camp garbage.
- In small spike camp situations (not Lucerne), individuals should use the "cat-hole" method of disposing of human waste. Toilet seats should be located a minimum of 200 feet from water sources. Holes should be dug 6-8 inches deep.
- In large or long term spike the camps use helicopters, boats, or pack stock to deliver portable backcountry latrines and remove human waste if necessary. If the camp does not have adequate pack, boat, or air support for human waste management, establish community latrines well away from water sources and common areas. Use human waste bags, if necessary

Dipping and Drafting

- No cross-dipping between water bodies. All buckets or snorkels should be cleaned, inspected, and dried in the sun if they must be used between lakes. Dipping in small lakes must be pre-approved by the READ or AA.
- When drafting, use already disturbed areas for stream access (road crossings, dispersed campsites) to reduce the need for riparian vegetation clearing.
- Use screens (3/32" **inch**) for all pumping operations.
- Use containment pads and basins under pumps and fuel cans. Ensure a spill kit is present with every operating pump.

Invasive Species

- The fire is burning within an infestation of common crupina, a WA State Class A Noxious weed. Prevent spread of crupina off site – plan to wash hose and other equipment. Request fire fighters brush boots before boarding boat or before entering National Park Service Land.
- Inspect slings and remove all plant/soil material prior to use.
- Ensure all camps, staging areas, helispots and cargo areas are free of invasive plants to prevent spread to un-infested areas.
- Weed wash all vehicles, including boats, when they arrive to the incident and when demobed.

Fisheries /Aquatic Recommendations

- If trees must be felled in riparian areas for suppression or safety reasons, fell them toward streams where possible and minimize bucking where possible.
- Non-mechanized suppression activities are recommended within Riparian Reserves (150-300 ft from stream channel). For example, consider hand lines instead of dozer lines when feasible.

Retardant Use

- Retardant avoidance areas are present in the fire suppression area for both aquatic and terrestrial species.
- Track all retardant drops – locations and amounts.
- Report all mis-applications ASAP to READ. Monitoring and reporting of misapplications is required.

Wet Meadows

- No line or other disturbance in wet meadows in the Summer Blossom area (east of South Navarre campground above and below the 8200 road) and at Coyote and Poison Springs at the headwaters of their respective creeks.

Dry Meadows

- Minimize disturbance from staging and parking areas in dry meadows. These areas recovery slowly and are vulnerable to invasive plant infestation.

White Bark Pine

- Avoid cutting white bark pine whenever possible. Needles of 5 keep it alive! Ask READ for help with ID.

Burnout operations

- Plan to protect whitebark pine of all ages and mature cold and moist forest during burnouts. READ consultation and line officer approval is required for burn plans that include these forest types.
- During burnouts modify firing to retain large trees, large snags and large down wood in forests whenever possible.
- Minimize total acres burned in burnouts.
- Incorporate typical resource protection measures used in RX burning whenever it is safe and practical to do so (such as retention of green islands in moist areas).
- Provide a map of areas that were burned as part of the burnout operation (for use in emergency consultation).
- If cultural resources are discovered during suppression activities, leave on site and notify READ.

LOGISTICS NOTES

Pioneer Fire ICP

Breakfast 0530 – 0900
Lunch @ Refer Trailer – 0500 - 2100
Dinner 1800 -2100
Shower 0500 – 1200 & 1400 – 2200
Supply 0600 – 2200
Ground Support 0700 – 2100
Fuel Tender 0700 – 2100
Weed Wash 0700 – 1400 & 1600 – 2000

FOB Lucerne

Breakfast 0600 - 0900
Lunch – Pickup with Breakfast
Dinner 2030 – 2130
Shower 0500 – 1200 & 1400 – 2200
Supply 0600 – 2200

Ground Support Contact Numbers:

Casey Glade 435-704-4702, Joe Keady 541-733-6701

Ordering Information

Submit all orders on General Message Form 213 to the following email address;

2024.pioneer.ordering@firenet.gov

Ordering Manager Noe Reyes 208-416-3715

ICP Camping & Parking Under Maple Trees

After assistance from Plans, READS and google, the sticky oily substance dripping from the maple trees next to Main Street was determined to be insect residue, sometimes called "Honeydew". This substance is nontoxic and doesn't damage cars if removed quickly. However, honeydew can damage car paint and reduce visibility if left on for too long. Water and a paper towel can remove it from a tent fly, so if your tent is affected wiping it off may remove the honeydew. Facilities staff took an affected vehicle to the weed wash. The windshield washer and wipers cleared the windshield easily. The weed wash successfully removed all the honeydew on other parts of the vehicle. Avoid parking or camping under the maple trees.

Recycling Scorecard on Incident

| | | | |
|-----------------|------------|-----------------|------------|
| Plastic Bottles | 641-lbs | Aluminum Cans | 181– lbs |
| Cardboard | 7,862-lbs | Office Paper | 571-lbs |
| Plastics 1 & 2 | 105-lbs | Glass | 9-lbs |
| Batteries | 112-lbs | Food Composting | 6,460-lbs |
| Cooking Oil | 176-gal | Food Donations | 89-lbs |
| Trash | 16,140-lbs | Recycling | 17,438-lbs |

Example GM (ICS213) for Boat Transportation

**** WHEN ARRANGING BOAT TRANSPORTATION USE THE FOLLOWING ****

Nathan Crawford, DIVS, 541-219-1374, Nathan_crawford@fws.gov

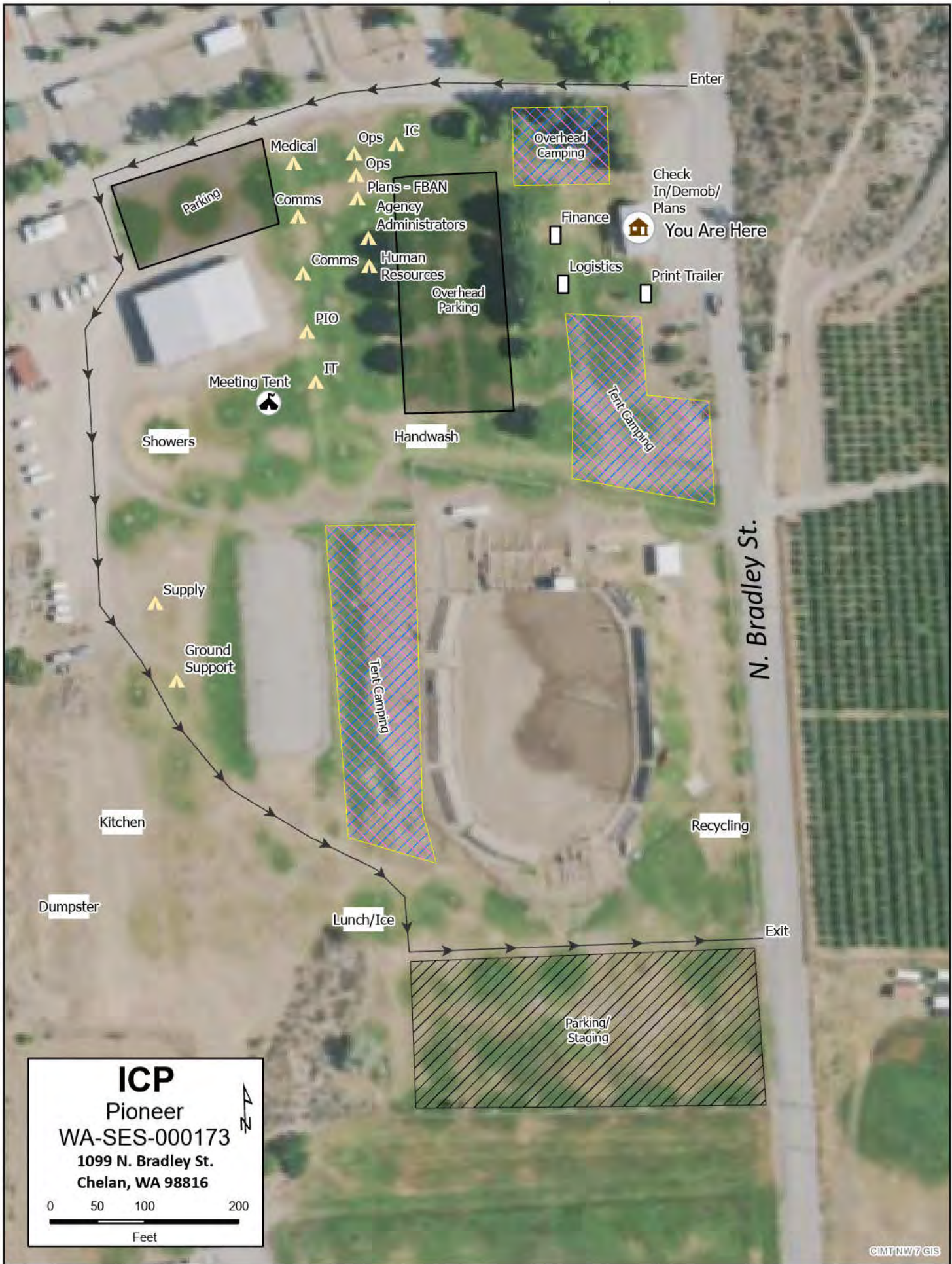
Seth Ellis, DIVS (T), 509-860-3290, seth.ellis453@gmail.com

GENERAL MESSAGE (ICS 213)

| | | |
|--|------------------|----------------|
| 1. Incident Name (Optional): Pioneer Fire | | |
| 2. To (Name and Position): Nate Crawford DIVS/Seth Ellis- Boat DIVS(t) | | |
| 3. From (Name and Position): | | |
| 4. Subject: Ferry Tickets | 5. Date: | 6. Time |
| 7. Message: <p style="text-align: center;">SAMPLE GENERAL MESSAGE FORM WITH REQUIRED INFORMATION</p> <p>O or C # _____</p> <p>Departure Date _____</p> <p>Ferry Ticket Departure Location (Chelan/Fields Point/Lucerne/Stehekin) _____</p> <p>Ferry Ticket Arrival Location (Chelan/Fields Point/Lucerne/Stehekin) _____</p> <p>Email address for confirmation _____</p> <p>* If unable to receive email, please note and tickets will be emailed to either your DIVS or the Boat Coordinator.*</p> <p>Phone #: _____</p> <p>FERRY TICKETS NEED TO BE SUBMITTED TO BOAT DIVS BY 1600 THE DAY PRIOR OF DESIRED DEPARTURE.</p> <p>IT IS PREFERRED FORMS ARE SUBMITTED 48 HRS PRIOR TO KNOWN AND SET LWD.</p> | | |
| 8. Approved by: Name: _____ Signature: _____ Position/Title: _____ | | |
| 9. Reply: | | |
| 10. Replied by: Name: _____ Position/Title: _____ Signature: _____ | | |
| ICS 213 | Date/Time: _____ | |

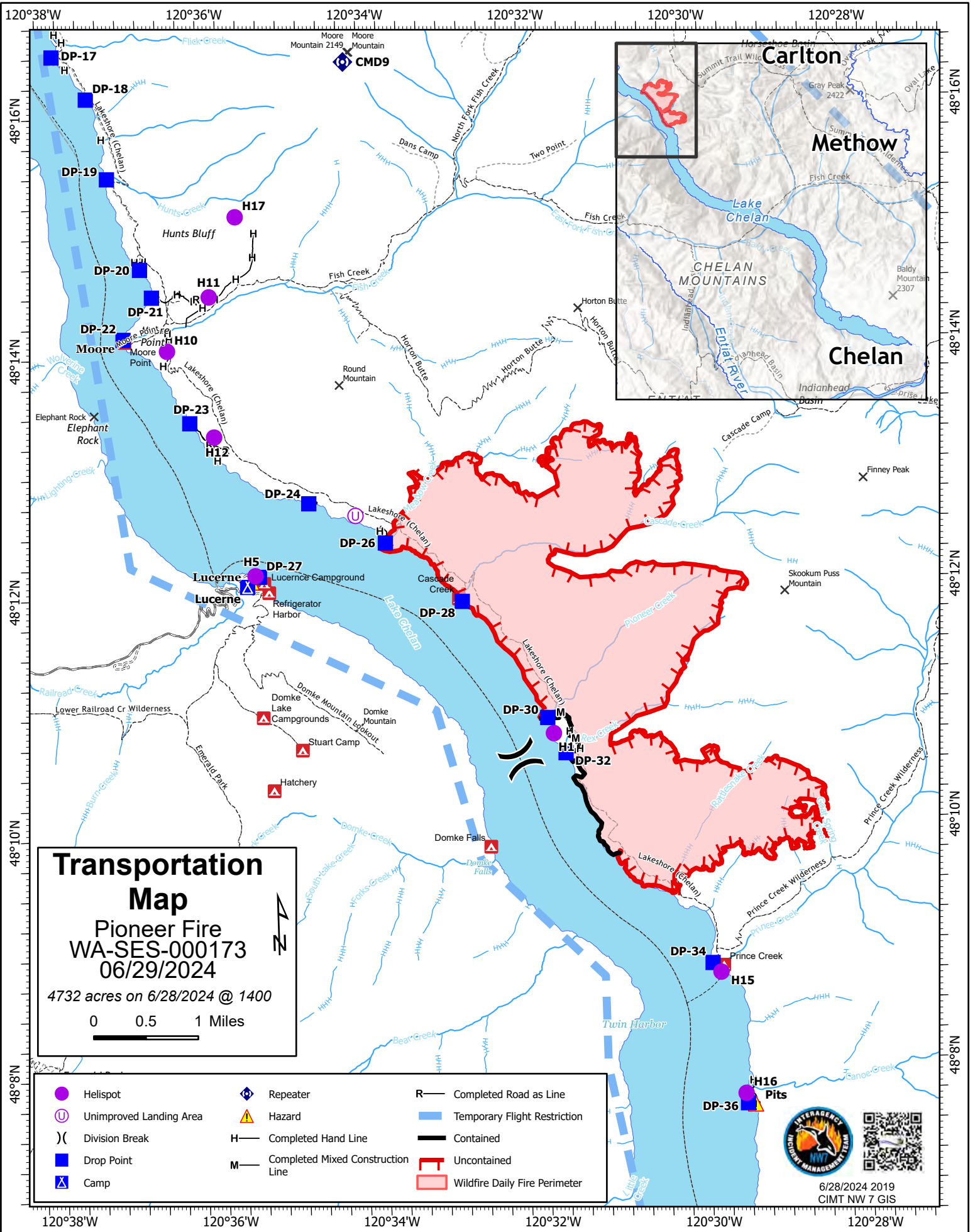
GENERAL MESSAGE (ICS 213)

| | | |
|---|--------------------------|----------------------|
| 1. Incident Name and Number: PIONEER | | |
| 2. To (Name and Position): ORDERING | | |
| 3. From (Name, Position and Phone): SMOKEY BEAR, PIO 555-123-1234 | | |
| 4. Subject: REQUEST | 5. Date: 06/29/24 | 6. Time: 1300 |
| 7. Message: WOULD LIKE TO ORDER 1 EA SHOVEL 1 PK GENERAL MESSAGES 1 BX PAPER TOWELS 2 ROLLS STRUCTURE WRAP TAPE (This is where you need to be specific. Research the item you want and recommend possible vendors, item number, especially if this is a unique item) NEED BY JULY 2, 2024 @ 1400. (You need to be realistic here. Plan on about 2-3) PLEASE DELIVER TO BLACK MOUNTAIN LOOKOUT **Make sure your contact info is somewhere on this form. Name, phone, or email.. ***For cache items you can expect delivery to the ICP Supply in 24 hours, or 48 if we're delivering. ****For local purchase items we need 48-72 hours | | |
| 8. Approved by: Name: _____ Signature: _____ Position/Title: _____ | | |
| 9. Reply: | | |
| 10. Replied by: Name: _____ Position/Title: _____ Signature: _____ | | |
| ICS 213 | Date/Time: _____ | |



ICP
 Pioneer
 WA-SES-000173
 1099 N. Bradley St.
 Chelan, WA 98816

0 50 100 200
 Feet



Transportation Map
Pioneer Fire
WA-SES-000173
06/29/2024
 4732 acres on 6/28/2024 @ 1400

0 0.5 1 Miles

- | | | |
|---------------------------|--------------------------------------|---------------------------------|
| ● Helispot | ◆ Repeater | R— Completed Road as Line |
| ⊕ Unimproved Landing Area | ⚠ Hazard | ▒ Temporary Flight Restriction |
|) (Division Break | H— Completed Hand Line | — Contained |
| ■ Drop Point | M— Completed Mixed Construction Line | ▒ Uncontained |
| ▲ Camp | | ▒ Wildfire Daily Fire Perimeter |



6/28/2024 2019
 CIMT NW 7 GIS

DIVISION PLANNING WORKSHEET

| | | |
|-----------------------|----------------|------------------------|
| NEXT OPERATIONAL DATE | DIVISION/GROUP | NAME OF DIVISION/GROUP |
|-----------------------|----------------|------------------------|

| | | |
|---------------------------------|---------------------|----------------------|
| __ ROLL OVER ASSIGNED RESOURCES | __ EXCESS RESOURCES | __ CORRECTION TO 204 |
|---------------------------------|---------------------|----------------------|

| E OR C NUMBER | RESOURCE DESIGNATOR | LEADER | NO. PERSONS | COMMENTS |
|---------------|---------------------|--------|-------------|----------|
| | | | | |
| | | | | |
| | | | | |
| | | | | |
| | | | | |
| | | | | |
| | | | | |
| | | | | |
| | | | | |
| | | | | |
| | | | | |
| | | | | |
| | | | | |
| | | | | |
| | | | | |
| | | | | |
| | | | | |
| | | | | |
| | | | | |
| | | | | |
| | | | | |
| | | | | |

OPERATIONAL PROJECTION (Task, Purpose, End State) 24 hrs

OPERATIONAL PROJECTION (Task, Purpose, End State) 48 hrs

OPERATIONAL PROJECTION (Task, Purpose, End State) 72 hrs

__ REQUEST FOR ADDITIONAL RESOURCES

| NUMBER | TYPE | RESOURCE KIND | DATE NEEDED |
|--------|------|---------------|-------------|
| | | | |
| | | | |
| | | | |
| | | | |
| | | | |
| | | | |
| | | | |
| | | | |
| | | | |
| | | | |

CRITICAL NEEDS: If your resource request is critical, describe the mission and the duration resources are needed.



| Team 7 Line Supply Order | | Order # | | | |
|---|---|---|----|--------------------------------|---------|
| Date & Time | Deliver To Location/time | Delivery Method | | | |
| Order Placed | (Division, Drop Point, Heli Spot, Lat/Long) | (Driver, Heli, DIVS to P/U) | | | |
| Order received in Communications (name & time) | | Ordered by (name and Position) | | | |
| Order received in Supply by (name & time) | | Ground Contact | | | |
| Order received in Transportation by (name & time) | | Contact Freq. | | | |
| Order received in Helibase by (name & time) | | Special Instructions/line length/ elevation | | | |
| Order shipped to line by (name & time) | | | | | |
| # | Item | Amount | # | Item | Amount |
| 1 | Meals #1842 | MRE 12/Cs | 33 | Bath in a Bag, Large #0712 | |
| 2 | Water #0048 | 5 gal cubies | 34 | Bath in a Bag, Small #0206 | |
| 3 | Gatorade | 24/Cs | 35 | Coffee Kit #0480 | |
| 4 | Batteries, AA #0030 | 24/pg | 36 | Coffee 3lb Can | |
| 5 | Batteries, AAA #7471 | 24/pg | 37 | Folda-Tank 1500 gal #0664 | |
| 6 | Gas Unleaded | 5 gal | 38 | Pumpkin 3000 gal. #0568 | |
| 7 | 2 Cycle Oil #7724 | 5 gal mix | 39 | Backpack Pump #0909 | |
| 8 | 2 cycle Oil #3444 | 1 Gal mix | 40 | Mark III pump + Kit #0148 | |
| 9 | Diesel | 5 gal | 41 | Lightweight Pump + Kit #8606 | |
| 10 | Bar Oil #1880 | 1 Gal | 42 | Volume Pump #1222 | |
| 11 | Bar Oil #1869 | 1 Qt | 43 | Hose 1 1/2" #1239 | 100' lg |
| 12 | Shovel #0171 | | 44 | Hose 1" #1238 | 100' lg |
| 13 | Pulaski #0146 | | 45 | Hose 3/4" #1016 | 50' lg |
| 14 | Mcleod #0296 | | 46 | Reducer 1 1/2" to 1" #0010 | |
| 15 | Combi #1180 | | 47 | Reducer 1" to 3/4" #0733 | |
| 16 | Chainsaw Kit #0340 | | 48 | Gated "Y" 1 1/2" #0231 | |
| 17 | Drip Torch Empty #0241 | | 49 | Gated "Y" 1" #0259 | |
| 18 | Fussee #0105 | | 50 | Gated "Y" 3/4" #0904 | |
| 19 | Sleeping Pad #1566 | | 51 | In-line Tee 1 1/2" to 1" #0230 | |
| 20 | Sleeping Bag #0022 | | 52 | Nozzle KK 1 1/2" #1082 | |
| 21 | Fly Tent #0070 | | 53 | Nozzle KK 1" #1081 | |
| 22 | Plastic Sheeting #0143 | | 54 | Nozzle 3/4" #0136 | |
| 23 | Parachute Cord #0533 | | 55 | Nozzle, Forester 1" #0024 | |
| 24 | Fiber Tape #0222 | | 56 | Sprinkler kit #1048 | |
| 25 | Garbage Bags #0021 | | 57 | | |
| 26 | Leadline 3000 lbs #0528 | | 58 | | |
| 27 | Cargo Net 3000lb #0531 | | 59 | Team 7 Hose Lay Kit | |
| 28 | Swivel 3000lb #0526 | | 60 | | |
| 29 | Slingable Bg 72 Gal Blivet #0426 | | 61 | | |
| 30 | Foam 5 gal. #1145 | | 62 | | |
| 31 | Toilet Paper #0142 | | 63 | | |
| 32 | | | 64 | | |

| Team 7 Hose Lay Kit | | |
|------------------------------|--------|----------|
| Item | Amount | Amount |
| 1 1/2 in. synthetic hose | | 1000 ft. |
| 1 in. synthetic hose | | 500 ft. |
| 3/4 in. garden hose | | 500 ft. |
| 1 1/2 in. gated wye | | 5 ea. |
| 1 1/2 in. - 1 in. reducer | | 5 ea. |
| 1 in. combination nozzle | | 5 ea. |
| 1 in. - 3/4 in. reducer | | 5 ea. |
| 3/4 in. valve, shutoff, ball | | 5 ea. |
| 3/4 in. nozzle | | 5 ea. |
| 3/4 in. gated wye | | 5 ea. |

| SPRINKLER KIT NFES # 1048 | | |
|--------------------------------|--------|---------|
| Item | Amount | Amount |
| Sprinkler head w/ couplings | | 4 ea. |
| 3/4 in. garden hose | | 250 ft. |
| 1 1/2 x 1 1/2 x 1 tee | | 4 ea. |
| 1 x 3/4 reducer | | 4 ea. |
| 1 1/2 in. - 1 in. reducer | | 1 ea. |
| 3/4 in. gated wye | | 2 ea. |
| 3/4 in. valve, shutoff, ball | | 4 ea. |
| 3/4 in. nozzle | | 1 ea. |
| 3/4 in. pressure regulator | | 4 ea. |
| 3/4 in. nozzle, plastic 60 GPM | | 1 ea. |
| 10 in. adjustable wrench | | 1 ea. |

LINE ORDER PROCESS

Line orders from the field should go through the Communication Unit via radio (primary) or 24-hour phone number shown on the cover of the IAP. All other supply requests should be submitted in person to the Supply Unit.

Check In Message

- Please complete the virtual check-in process via the QR code on the front cover.
- You are not checked in until you provide the following:
 - 1) Red Cards
 - 2) Roster/Manifest
- Please email documents to: 2024.pioneer.checkin@firenet.gov

Any Questions:

Phone: 509-661-5372

Email: 2024.pioneer.checkin@firenet.gov

Demob Message

- Fliers complete the “Air Travel Request” via the QR code on the front cover 72 hours prior to flight date.
- Return supplies to the Cache.
- Return radios, antennas, etc., to Communications.
- Contact Finance about closing out your paperwork.
- Once the above items have been completed, SCAN the QR code on the front cover and complete the demob questions.

Any Questions:

Phone: 509-662-5376

Email: 2024.pioneer.demob@firenet.gov



Last Work Day / Demob Report

Incident: PIONEER US-WA-SES-000173

Questions ?? - Jay at (509) 661-5376

Demob 06/29

CREWS

| | | |
|------|------|--------------------|
| CRW1 | C-9 | CRW1 - ZIGZAG IHC |
| CRW1 | C-11 | CRW1 - REDMOND IHC |

OVERHEAD

| | | |
|------|----------|-----------------------|
| HECM | O-119 | HASTINGS, ANDREW B |
| HECM | O-120 | MASON, CORY WILLIAM |
| PIOC | O-56 | BOGARDUS, LARISA ANN |
| PIOC | O-174.89 | STECKER, LIVIA AUDREY |

LWD: 06/29 / Demob 06/30

CREWS

| | | |
|------|------|-------------------|
| CR2I | C-10 | CR2I - OWF METHOW |
|------|------|-------------------|

OVERHEAD

| | | |
|------|-------|---------------------|
| DIVS | O-103 | LIPPERT, BENJAMIN J |
| DIVS | O-106 | HALL, ANDREW J |
| HLCO | O-88 | BERGREN, KENNETH C |
| HMGB | O-101 | THAYER, BENJAMIN |
| PIO3 | O-81 | SILVIS, CARISSA |
| SOPL | O-74 | JOHNSON, MARK E |
| TFLD | O-83 | LEWIS, MARK R |

LWD: 06/30 / Demob 07/01

EQUIPMENT

| | | |
|------|------|-------------------------------------|
| WTS2 | E-75 | WTS2 - DAVID RAINS - 391135 |
| WTS3 | E-99 | WTS3 - NW DIESEL DUDES LLC - A44464 |

OVERHEAD

| | | |
|------|-------|-----------------------------|
| DIVS | O-107 | BAFFA, SILAS TAYT |
| HECM | O-124 | BIVENS, BRANDI C |
| HEQB | O-115 | HANSON, GARRETT GERALD |
| HEQB | O-116 | MEYER, TYLER TODD |
| HEQB | O-117 | FOX, IAN MASON |
| HRSP | O-109 | DIETRICH, MARGARET VIRGINIA |
| SEC1 | O-80 | HUNT, ROBERT DALE |
| SEC2 | O-82 | KRUSE, LISA JO |
| SEC2 | O-95 | SLATINSKI, JOHN DONALD |
| SEC2 | O-98 | WIEBUSCH, COREY P |
| TFLD | O-50 | OLSON, TODD OWEN |
| TFLD | O-110 | CLIFTON, SHANE D |
| TFLD | O-111 | OLSON, LARS M |
| THSP | O-108 | MORPHIS, SETH BRYANT |



Pioneer Fire WA-SES-000173

C&G Contact List

| | | | | |
|------------------------------|--------------|-------------|--|----------------|
| Incident Commander | LeFevre | Nathan | nlefevre@blm.gov | (541) 255-6595 |
| Deputy Incident Commander | Orr | Christopher | christopher_orr@nps.gov | (530) 640-1464 |
| Incident Commander (T) | North | Steve | snorth@mcclanefire.org | (360) 239-2069 |
| Safety Officer | Brown | Eric | ericbrown0523@gmail.com | (928) 699-3477 |
| Safety Officer | Broyles | Matt | admbroyles@gmail.com | (541) 591-6151 |
| Liaison Officer | Christianson | Shawn | shawn.christianson.adm@colvilletribes.com | (509) 429-3348 |
| Liaison Officer | Suba | Mark | marksuba12@gmail.com | (541) 219-9048 |
| Liaison Officer | Brody | Greg | lmigregbrody@gmail.com | (503) 482-8071 |
| Liaison Officer (T) | Marchand | Rhonda | rmarchand76@yahoo.com | (509) 634-1166 |
| Public Information Officer | Rossbach | Cheyne | crossbac@blm.gov | (541) 579-0648 |
| Finance Section Chief | Westgate | Patty | pattywestgate@gmail.com | (541) 892-8432 |
| Finance Section Chief (T) | Bailey | Lori | lori.bailey@usda.gov | (541) 589-0806 |
| Operations Section Chief | Larson | Jon | jon_larson@fws.gov | (208) 631-6488 |
| Operations Section Chief | Merritt | Seth | smerritt@esf-r.org | (425) 501-7384 |
| Operations Section Chief (T) | Poyner | Rob | robert.poyner@usda.gov | (425) 512-2621 |
| Operations Section Chief | Bortner | Jefferson | jeff_bortner@nps.gov | (360) 784-2126 |
| Logistics Section Chief | Yager | Max | orcamax2015@gmail.com | (541) 690-6627 |
| Logistics Section Chief | Vaughan | Franklin | franklin.vaughan@usda.gov | (859) 619-7244 |
| Logistics Section Chief | Wedekind | Cindy | cwedekind59@gmail.com | (541) 450-1136 |
| Planning Section Chief | Crawford | Michael | mcrawfor@blm.gov | (458) 212-0501 |
| Planning Section Chief (T) | Plummer | Debbie | dplummer@blm.gov | (509) 991-0334 |

ACTIVITY LOG (ICS 214)

| | | | |
|---|-------------------------|--|--|
| 1. Incident Name: | | 2. Operational Period: Date From: _____ Date To: _____ Time From: _____ Time To: _____ | |
| 3. Name: | 4. ICS Position: | 5. Home Agency (and Unit): | |
| 6. Resources Assigned: | | | |
| Name | ICS Position | Home Agency (and Unit) | |
| | | | |
| | | | |
| | | | |
| | | | |
| | | | |
| | | | |
| | | | |
| | | | |
| | | | |
| | | | |
| | | | |
| | | | |
| | | | |
| | | | |
| | | | |
| | | | |
| | | | |
| | | | |
| | | | |
| | | | |
| | | | |
| | | | |
| | | | |
| 7. Activity Log: | | | |
| Date/Time | Notable Activities | | |
| | | | |
| | | | |
| | | | |
| | | | |
| | | | |
| | | | |
| | | | |
| | | | |
| | | | |
| | | | |
| | | | |
| | | | |
| | | | |
| | | | |
| | | | |
| | | | |
| | | | |
| | | | |
| | | | |
| | | | |
| | | | |
| | | | |
| | | | |
| | | | |
| | | | |
| 8. Prepared by: Name: _____ Position/Title: _____ Signature: _____ | | | |
| ICS 214, Page 1 | Date/Time: _____ | | |

MEDICAL PLAN (206 WF)

| 1. Incident/Project Name | | | | 2. Operational Period | | | | |
|--|---|--|-----------------------------|--|----------------|--|----|-------------------------------|
| Pioneer Fire | | | | Date/Time: 06/29/24 0600-2200 | | | | |
| 3. Ambulance Services | | | | | | | | |
| Name | Complete Address | Phone | Advanced Life Support (ALS) | | | | | |
| | | | Yes | No | | | | |
| Lake Chelan EMS | Chelan, WA | 911 | X | | | | | |
| Douglas/Okanagan County Fire | Brewster, WA | 911 | | X | | | | |
| Aeromethow EMS | Twisp, WA | 911 | X | | | | | |
| 4. Air Ambulance Services | | | | | | | | |
| Name | Phone/Channel | Frequency, Type of Aircraft & Capability | | | | | | |
| Life Flight - Brewster | 1-800-232-0911 911 | VMED 29, Rotor, ALS, 24 hr | | | | | | |
| Airlift NW - Wenatchee | 1-800-426-2430 911 | VMED 29, Rotor, ALS, 24 hr | | | | | | |
| Medivac Ship | Command 7,8,9,10,11 (Linked) | VMED 29, Rotor, BLS, Daytime | | | | | | |
| Mount Rainer Ship | CWICC 1-509-884-3473 x 2 | VMED 29, Rotor, BLS, Daytime, Short Haul | | | | | | |
| Snohawk 10 - Snohomish | 1-800-258-5990 911 | VMED 29, Rotor, ALS, Daytime, Hoist | | | | | | |
| Spokane County Hoist - Spokane | 1-509-532-8930 911 | VMED 29, Rotor, ALS, 24 hr, Hoist Daytime Only | | | | | | |
| 5. Hospitals | | | | | | | | |
| Name | Degrees Decimal Minutes | | Travel Time From Fire | | Phone | Helipad | | Level of Care |
| | | | Air | Boat | | Yes | No | |
| Lake Chelan Health 110 S. Apple Blossom Drive Chelan WA | Lat: | 47° 50' 20 N | 30 Min | 3 Hr | 509-683-2474 | | X | Level IV Trauma |
| | Long: | 119° 59' 20 W | | | | | | |
| Central Washington Hospital 1201 S. Miller Wenatchee WA | Lat: | 47° 24. 43 N | 1 Hr | 4 Hr | 509-433-3115 | X | | Level III Trauma |
| | Long: | 120° 19. 28 W | | | | | | |
| Harborview Medical Center 325 9 th Ave Seattle WA | Lat: | 47° 36. 24 N | 1.5 Hr | 6 Hr | 206-744-4025 | X | | Level I Trauma Burn Center |
| | Long: | 122° 19. 45 W | | | | | | |
| ICP | EMS Responders & Capability: | | | James Brown MEDL/Paramedic Mariann Turley MEDL/AEMT EMT 4 Justin Dominguez | | 360-775-5413 509-496-9370 509-741-0611 | | |
| | Equipment Available on Scene: | | | ALS Kit, AED, O2, OTC meds | | | | |
| | Medical Emergency Channel: | | | Command 7, 8, 9, 10, 11 (Linked) | | | | |
| | ETA for Ambulance to Scene: | | | | | | | |
| | Air: | | | NA | | | | |
| | Ground: | | | 15 Min | | | | |
| | Approved Heli-Spot: | | | NA | | | | |
| | Lat: | | | NA | | | | |
| LUCERNE FOB | EMS Responders & Capability: | | | Ben Meacham MEDL/EMTF (Lucerne FOB) Londa Van Kirk MEDL/EMTF (Lucerne FOB) MEDIC 6 Steve Medina (Boat Medical) EMT 1 Ivan Huld (Boat Medical) | | 360-921-3817 360-815-7645 360-556-9568 360-888-9880 | | |
| | Equipment Available on Scene: | | | ALS Kit, AED, O2, OTC meds | | | | |
| | Medical Emergency Channel: | | | Command 7, 8, 9, 10, 11 (Linked) | | | | |
| | ETA for Ambulance to Scene: | | | | | | | |
| | Air: | | | 2 hr | | | | |
| | Water/Ground: | | | 3 hr | | | | |
| | Approved Heli-Spot: | | | | | | | |
| | Lat: | | | H5 48° 12.1624' N | | | | |
| Long: | | | 120° 35.4476' W | | | | | |
| BRANCH I | EMS Responders & Capability: | | | MEDIC 1 Remington Becker (DIV Z) MEDIC 8 Rick Kelly (DIV Z) MEDIC 3 Adam Lathrop (DIV A) EMT 2 Aidan Noel (DIV A) EMT 3 James Franklin (DIV A) | | 360-903-8612 509-290-3922 425-531-0469 206-458-0103 253-312-1374 | | |
| | Equipment Available on Scene: | | | ALS Kit, Monitor/Defib, O2 | | | | |
| | Medical Emergency Channel: | | | Command 7, 8, 9,10, 11 (Linked) | | | | |
| | ETA for Ambulance to Scene: | | | | | | | |
| | Air: | | | 2 hr | | | | |
| | Water/Ground: | | | 3 hr | | | | |
| | Approved Heli-Spots: | | | | | | | |
| | H1 48° 10.813' N | | | H11 48° 14.492' N | | H15 48° 08.754' N | | |
| | 120° 31.925' W | | | 120° 35.922' W | | 120° 29.813' W | | |
| | H10 48° 14.099' N | | | H12 48° 13.381' N | | H16 48° 07.744' N | | |
| 120° 36.782' W | | | 120° 35.919' W | | 120° 29.541' W | | | |
| Lat: | | | NA | | | | | |
| Long: | | | NA | | | | | |

MEDICAL PLAN (206 WF)

| | | | |
|------------------|---|---|--|
| BRANCH II | EMS Responders & Capability: | REMS 2 Brayden Kirk + 3 (DIV D) Kevin Smith MEDLt/EMPF (Stehekin FOB) | 509-264-8203 509-710-0239 |
| | Equipment Available on Scene: | | |
| | Medical Emergency Channel: | Command 7, 8 ,9 , 10, 11 (Linked) | |
| | ETA for Ambulance to Scene: | | |
| | Air: | 2 hr | |
| | Ground: | 3 hr | |
| | Approved Heli-Spot: | NA | |
| | Lat: | NA | |
| Long: | NA | | |
| BRANCH IV | EMS Responders & Capability: | Unstaffed with medical Contingency medical resources can assist | |
| | Equipment Available on Scene: | | |
| | Medical Emergency Channel: | Command 7, 8 ,9 , 10, 11,12 (Linked) | |
| | ETA for Ambulance to Scene: | | |
| | Air: | 2 hr | |
| | Ground: | 3 hr | |
| | Approved Heli-Spot: | NA | |
| | Lat: | NA | |
| Long: | NA | | |
| BRANCH V | EMS Responders & Capability: | MEDIC 2 Joel Bower (CONTINGENCY) MEDIC 5 Brian Linacre (CONTINGENCY) MEDIC 7 Steve Drab (CONTINGENCY) REMS 1 Ray Storm + 4 (DIV S) | 360-461-7390 301-781-7990 406-600-2059 415 637-0491 |
| | Equipment Available on Scene: | ALS Kit, Monitor/Defib, O2, Rescue Gear | |
| | Medical Emergency Channel: | Command 7, 8, 9, 10, 11, 12 (Linked) | |
| | ETA for Ambulance to Scene: | | |
| | Air: | 2 hr | |
| | Ground: | 3 hr | |
| | Approved Heli-Spot: | | |
| | Lat: | H25 47° 59.200' N | |
| Long: | 120° 16. 521' W | | |
| TBD | EMS Responders & Capability: | TBD | |
| | Equipment Available on Scene: | | |
| | Medical Emergency Channel: | Command 7,8,9,10,11 (Linked) | |
| | ETA for Ambulance to Scene: | | |
| | Air: | | |
| | Ground: | | |
| | Approved Heli-Spot: | NA | |
| | Lat: | NA | |
| Long: | NA | | |
| TBD | EMS Responders & Capability: | TBD | |
| | Equipment Available on Scene: | | |
| | Medical Emergency Channel: | Command 7,8,9,10,11 (Linked) | |
| | ETA for Ambulance to Scene: | | |
| | Air: | | |
| | Ground: | | |
| | Approved Heli-Spot: | NA | |
| | Lat: | NA | |
| Long: | NA | | |

| Prepared By (Medical Unit Leader) | Date | Reviewed By (Safety Officer) | Date |
|-----------------------------------|----------|--------------------------------|----------|
| Mariann Turley MEDL | 06/28/24 | Matt Broyles SOFC | 06/28/24 |
| Signature: <i>Mariann Turley</i> | | Signature: <i>Matt Broyles</i> | |

Medical Incident Report

FOR A NON-EMERGENCY INCIDENT, WORK THROUGH CHAIN OF COMMAND TO REPORT AND TRANSPORT INJURED PERSONNEL AS NECESSARY.

FOR A MEDICAL EMERGENCY: IDENTIFY ON SCENE INCIDENT COMMANDER BY NAME AND POSITION AND ANNOUNCE "MEDICAL EMERGENCY" TO INITIATE RESPONSE FROM IMT COMMUNICATIONS/DISPATCH.

Use the following items to communicate situation to communications/dispatch.

1. CONTACT COMMUNICATIONS / DISPATCH (**Verify correct frequency prior to starting report**)
Ex: "Communications, Div. Alpha. Stand-by for Emergency Traffic."
2. INCIDENT STATUS: *Provide incident summary (including number of patients) and command structure.*
Ex: "Communications, I have a Red priority patient, unconscious, struck by a falling tree. Requesting air ambulance to Forest Road 1 at (Lat./Long.) This will be the Trout Meadow Medical, IC is TFLD Jones. EMT Smith is providing medical care."

| | | |
|--|---|---|
| Severity of Emergency / Transport Priority | <input type="checkbox"/> RED / PRIORITY 1 Life or limb threatening injury or illness. Evacuation need is IMMEDIATE <i>Ex: Unconscious, difficulty breathing, bleeding severely, 2° – 3° burns more than 4 palm sizes, heat stroke, disoriented.</i> <input type="checkbox"/> YELLOW / PRIORITY 2 Serious Injury or illness. Evacuation may be DELAYED if necessary. <i>Ex: Significant trauma, unable to walk, 2° – 3° burns not more than 1-3 palm sizes.</i> <input type="checkbox"/> GREEN / PRIORITY 3 Minor Injury or illness. Non-Emergency transport <i>Ex: Sprains, strains, minor heat-related illness.</i> | |
| Nature of Injury or Illness & Mechanism of Injury | | <i>Brief Summary of Injury or Illness (Ex: Unconscious, Struck by Falling Tree)</i> |
| Transport Request | | <i>Air Ambulance / Short Haul/Hoist Ground Ambulance / Other</i> |
| Patient Location | | <i>Descriptive Location & Lat. / Long. (WGS84)</i> |
| Incident Name | | <i>Geographic Name + "Medical" (Ex: Trout Meadow Medical)</i> |
| On-Scene Incident Commander | | <i>Name of on-scene IC of Incident within an Incident (Ex: TFLD Jones)</i> |
| Patient Care | | <i>Name of Care Provider (Ex: EMT Smith)</i> |

3. INITIAL PATIENT ASSESSMENT: *Complete this section for each patient as applicable (start with the most severe patient)*

Patient Assessment: See IRPG page 106

Treatment:

4. TRANSPORT PLAN:

Evacuation Location (if different): *(Descriptive Location (drop point, intersection, etc.) or Lat. / Long.)* Patient's ETA to Evacuation Location:

Helispot / Extraction Site Size and Hazards:

5. ADDITIONAL RESOURCES / EQUIPMENT NEEDS:

Example: Paramedic/EMT, Crews, Immobilization Devices, AED, Oxygen, Trauma Bag, IV/Fluid(s), Splints, Rope rescue, Wheeled litter, HAZMAT, Extrication

6. COMMUNICATIONS: Identify State Air/Ground EMS Frequencies and Hospital Contacts as applicable

| Function | Channel Name/Number | Receive (RX) | Tone/NAC * | Transmit (TX) | Tone/NAC * |
|-------------|---------------------|--------------|------------|---------------|------------|
| COMMAND | | | | | |
| AIR-TO-GRND | | | | | |
| TACTICAL | | | | | |

7. CONTINGENCY: **Considerations:** *If primary options fail, what actions can be implemented in conjunction with primary evacuation method? Be thinking ahead.*

8. ADDITIONAL INFORMATION: *Updates/Changes, etc.*

REMEMBER: Confirm ETA's of resources ordered. Act according to your level of training. Be Alert. Keep Calm. Think Clearly. Act Decisively.