

# INCIDENT ACTION PLAN



**Monday, July 8, 2024**  
**Operational Period 0700-2100**



**USFS: PN RZ79**  
**DOI: RZ79**  
**WA DNR: 221-LDW**

Maps, IAP,  
Finance & More


This page intentionally left blank.



## INCIDENT OBJECTIVES (ICS 202)

<b>1. Incident Name:</b>	<b>2. Operational Period: 0700-2100</b>	
PIONEER	Date/Time From: 07/08/2024 0700      MON	Date/Time To: 07/08/2024 2100      MON
<b>3. Objective(s):</b>		
<u>Strategic Framework:</u>		
<p>The Pioneer Fire is a full suppression fire utilizing strategies and tactics that provide the highest likelihood of success while mitigating risks to the responders and public. Extreme terrain prevents direct attack. Indirect lines are being identified and established that reduces risk to responders while protecting identified values including private and federal infrastructure and recreational values.</p>		
<u>Management Objectives:</u>		
<ul style="list-style-type: none"> <li>• Ensure the safety and well-being of responders and the public by making timely risk-informed decisions that align with values at risk.</li> <li>• Protect private and federal infrastructure and recreational values.</li> <li>• Foster relationships with local cooperators and the public by providing coordinated, accurate and timely information.</li> <li>• Coordinate suppression activities with READ's to identify and mitigate current and future impacts to the landscape and resources.</li> <li>• Treat each other with dignity and respect and act in a professional manner on the fire and in the communities.</li> <li>• Manage cost commensurate with values at risk by coordinating with the Agency Administrators and Incident Business Advisors.</li> </ul>		
<b>4. Operational Period Command Emphasis:</b>		
<ul style="list-style-type: none"> <li>• Implement an effective suppression strategy utilizing direct attack where and when appropriate to protect values at risk. When fire behavior, terrain or safety concerns prohibit direct attack, utilize other suppression tactics such as indirect and point protection as appropriate to reduce risk to responders. Take advantage of natural features such as breaks in fuels, topographic features, or changes in weather.</li> <li>• Establish indirect control lines with the highest probability of success which prevent fire spread into populated areas.</li> <li>• Communicate with local law enforcement officials to ensure current and potential evacuations are coordinated.</li> </ul>		
<b>General Situational Awareness:</b>		
<p>A Red Flag Warning is in place for hot, dry and unstable conditions, and an Excessive Heat Warning has been issued due to dangerously hot conditions during the day with little relief overnight. Responders are urged to prioritize personal safety in the heat by staying hydrated, taking breaks, and seeking shade or cooler environments.</p>		
<b>5. Site Safety Plan Required?</b> Yes <input type="checkbox"/> No <input checked="" type="checkbox"/>		
<b>Approved Site Safety Plan(s) Located at:</b>		
<b>6. Incident Action Plan</b> (the items checked below are included in this Incident Action Plan):		
<input checked="" type="checkbox"/> ICS 202 <input checked="" type="checkbox"/> ICS 203 <input checked="" type="checkbox"/> ICS 204 <input checked="" type="checkbox"/> ICS 205 <input type="checkbox"/> ICS 205A <input checked="" type="checkbox"/> ICS 206	<input type="checkbox"/> ICS 207 <input checked="" type="checkbox"/> ICS 208 <input checked="" type="checkbox"/> ICS 220 <input checked="" type="checkbox"/> Map/Chart <input checked="" type="checkbox"/> Weather Forecast/Tides/Currents	<b>Other Attachments:</b> <input checked="" type="checkbox"/> HR MESSAGE <input checked="" type="checkbox"/> LOGISTICS MESSAGE <input checked="" type="checkbox"/> ICS 214 - UNIT LOG <input type="checkbox"/> _____
<b>7. Prepared by:</b> JILL JOHNSON	<b>Position/Title:</b> PSCC	<b>Signature:</b> <i>Jill Johnson</i>
<b>8. Approved by Incident Commander:</b>	<b>Name:</b> JEFF DIMKE	<b>Signature:</b> <i>Jeff Dimke</i>
<b>ICS 202</b>	<b>IAP Page</b>	<b>Date/Time:</b> 07/07/2024 2000

## ORGANIZATION ASSIGNMENT LIST (ICS 203)

<b>1. Incident Name:</b>		<b>2. Operational Period:</b> 0700-2100	
PIONEER		Date/Time From: 07/08/2024 0700 MON	Date/Time To: 07/08/2024 2100 MON
<b>3. Incident Commander(s) and Command Staff:</b>		SECURITY UNIT	RON TAYLOR
IC/UC	JEFF DIMKE	FOOD UNIT	KAREN HAUTER
DEPUTY	BOB SHINDELAR	<b>7. Operations Section:</b>	
SAFETY OFFICER	JOSH NORTHRUP MARSHALL BROWN	OPS SECTION CHIEF	AARON ROWE, LONNIE NEWTON (T)
INFORMATION OFFICER	JOEL BRUMM HEATHER APPELHOPF	PLANNING OPS SECTION CHIEF	KURT RANTA, ROB POYNER (T)
LIAISON OFFICER	JEFF SEVIGNEY; JON MEIER JOHN JOHNSON (T); COLLIN HAFHEY (T)	STRATEGIC OPS SECTION CHIEF	TONY ENGEL, MIKE DAVIS (T)
<b>4. Agency/Organization Representative(s):</b>		<b>Branch</b>	<b>I/II</b>
<b>Agency/Organization</b>	<b>Name</b>	BRANCH DIRECTOR	SCOTT EBEL, JOSH VERELLEN (T)
USFS OKA/WEN AGENCY ADMIN	CHRIS FURR PAUL WILLARD (T)	DIVISION/GROUP	A SHAWN OTTO, CHRIS RAMISKEY (T)
DNR AGENCY ADMIN	LARRY LEACH	DIVISION/GROUP	D ANDREW SCHAFFRAN, PAUL KIMBALL (T)
DNR DEPUTY AGENCY ADMIN	WYATT LEIGHTON	<b>Branch</b>	<b>IV</b>
NPS AGENCY ADMIN	DON STRIKER	BRANCH DIRECTOR	TIMOTHY BARNETT
NPS AGENCY REP	DENISE SHULTZ	DIVISION/GROUP	S MATT KENNEDY
<b>5. Planning Section:</b>		DIVISION/GROUP	CONTINGENCY/ROADS MATT ZIEGLER, STEVEN ABRAMS (T)
CHIEF	HOWARD JOHNSON	DIVISION/GROUP	FIRING FIDEL VERDUZCO
DEPUTY	JILL JOHNSON	DIVISION/GROUP	STAGING NOAH DANIELS
RESOURCES UNIT	JENNIFER NORTON CHRIS VOLK	<b>Branch</b>	<b>V</b>
SITUATION UNIT	STEPHEN SEWELL (T)	BRANCH DIRECTOR	JEROMY WILSON
DOCUMENTATION UNIT	DEIDRE SMITH	DIVISION/GROUP	LAKE SHORE JON STONELAKE, NICK WIGLE (T)
DEMOBILIZATION UNIT	MIKE HESTON	DIVISION/GROUP	BOAT SAM STEINHOUSER, SETH ELLIS (T)
FIRE BEHAVIOR ANALYST	DON STRAND; MICHAEL BOWDEN	DIVISION/GROUP	STRUCTURE SCOTT CLEAVE
GIS SPECIALIST	SHAWN BUSHNELL MIKE TONKEL	<b>7b. Air Operations Branch:</b>	
TECHNOLOGY SUPPORT SPECIALIST	GEORGE JENKINS; LIBBY EVERETT (T) JUSTIN LEACH (T)	AIR OPS BRANCH DIRECTOR	PAUL BALFOUR
INCIDENT METEOROLOGIST	TODD CARTER MADDIE KRISTELL (T)	AIR SUPPORT SUPERVISOR	TIM LYDA
AIR RESOURCE ADVISOR	DAN BYRD	<b>8. Finance/Administration Section:</b>	
<b>6. Logistics Section:</b>		CHIEF	CHRISTINA GOEBEL STEVE CROW (T)
CHIEF	KEVIN HAUGHTON; THAD FRATER (T) WHIT SPENCER	TIME UNIT	CHERI FULLER LARCI MILLER (T)
SUPPLY UNIT	JOHN KAUPA	PROCUREMENT UNIT	TODD POWELL
FACILITIES UNIT	KAREN ZIRKLE	COMPENSATION UNIT	MIKE KELLY PETE BIDIGARE (T)
GROUND SUPPORT UNIT	DAVE HARSH TOM FORTIN; HEATH KESSI (T)	COST UNIT	KAY HIGH
COMMUNICATIONS UNIT	MISSY PARKER	INC CONTRACT PROJ INSPECTOR	ROB HECHINGER
MEDICAL UNIT	DIANA BRAUN JOSEPH BRANSON (T)		
<b>9. Prepared By:</b>	<b>Name:</b> JILL JOHNSON	<b>Position/Title:</b> PSCC	<b>Signature:</b> 
ICS 203	IAP Page	<b>Date/Time:</b> 07/07/2024 2000	



# Fire Weather Forecast



**FORECAST NO:** 26  
**PREDICTION FOR:** 24 Hr Shift  
**SHIFT DATE:** Monday 7/8/2024  
**TIME AND DATE ISSUED:** 7/7/2024 1900 hrs

**INCIDENT:** Pioneer Fire  
**SIGNED:** Madelyn Kristell  
Incident Meteorologist Trainee (IMET)

## Discussion:

**\*\*\* Red Flag Warning for Hot, Dry and Unstable Conditions \*\*\***

**\*\*\* Excessive Heat Warning has been issued by the NWS, Spokane effective through Wednesday night \*\*\***

A significant heatwave is ongoing and will persist through the middle of the week. Expect temperatures in the upper 90s and low 100s with critically low relative humidity. Overnight temperatures are not cool enough to provide adequate relief from the heat. Increasing instability, light winds, hot temperatures and poor RH recoveries make for critical fire weather conditions higher probability for PyroCumulus development. Common hazards associated with PyroCumulus include strong, gusty and erratic winds with sudden downdrafts. A moderate surface inversion will trap smoke near the surface for reduced air quality and visibility until mixing can occur later in the morning. Thermal belts are likely to be present on the middle to upper slopes of the fire area.

## WEATHER FORECAST FOR TODAY:

**SKY/WEATHER:** Sunny. Smoke in the morning and in valleys, diminishing in the afternoon.

**MAX TEMPERATURE:** 96 to 101 valleys/mid-slopes. 77 to 82 around 5000 feet.

**MIN RH:** 12 to 19 percent valleys/mid-slopes. 19 to 25 percent ridges.

### **20 FT WINDS:**

**Lower Valleys:** Northwest flow in the morning, 4 to 7 mph, turning southeast after 1000 at 5 to 8 mph.

**Mid-slopes and Ridges:** Northwest 5 to 8 mph, turning SSE in the afternoon. 5 to 9 mph gusting to 15 mph.

**HAINES INDEX:** 5 High.

**TRANSPORT WINDS:** Southeast turning northwest at 10 mph.

**INVERSION:** Moderate inversion lifting by 1200. Mixing Height 15000 ft by 1400 hours.

## TONIGHT:

**SKY/WEATHER:** Mostly Clear. Smoke to settle in valleys near Chelan and in drainages near the fire.

**MIN TEMPERATURE:** 68 to 73 valleys/mid-slopes. 57 to 60 around 5000 feet.

**MAX RH: Poor Recovery.** 30 to 35 percent valleys/mid-slopes. 35 to 45 percent ridges around 5000 feet.

### **20 FT WINDS:**

**Valleys/Lower Slopes:** Northwest down lake 5 to 7 mph in the evening.

**Mid-Slopes and Ridges:** Northwest 10 to 15 mph in the evening.

**INVERSION:** Developing after 2200 hrs to near 1000 ft. Mid-Slope Thermal Belt likely.

## TUESDAY:

**SKY/WEATHER:** Sunny and hot.

**MAX TEMPERATURE:** Hotter. 100 to 104 valleys/mid-slopes. 78 to 83 around 5000 feet.

**MIN RH:** 10 to 16 percent valleys/mid-slopes. 18 to 25 percent ridges.

### **20 FT WINDS:**

**Lower Valleys:** Northwest before 1100 at 4 to 7 mph, turning SE 5 to 10 mph.

**Mid-slopes and Ridges:** West before 0700 at 3 to 6 mph, turning SW 5 to 10 mph.

**HAINES INDEX:** 5 High.

**TRANSPORT WINDS:** SE turning NW 13 mph.

**Boating concerns Sunday:** Lighter downlake flow should reduce whitecaps and wind waves below 2ft.

**Aviation concerns Sunday:** Temperature near 25C at 4000 feet for load calcs. Thermal turbulence likely due to uneven heating of terrain and slopes.

Weather observations can be texted to 509-319-0474 or emailed to [todd.carter@noaa.gov](mailto:todd.carter@noaa.gov)

## Fire Behavior Forecast # 27

<b>Name of Incident:</b> <b>Pioneer</b>	<b>Administrative Unit:</b> SE Region DNR / Okanogan-Wenatchee NF
<b>Date &amp; Time Issued:</b> July 7, 2024 @ 1900	<b>Operational Period:</b> <u>DAY</u> 07/08/2024
<b>FBAN:</b> Don Strand	<b>Signed:</b> DS

**Assumptions:** *HOT & DRY conditions will provide all the ingredients for very active fire behavior today. Current fuel conditions will promote rapid fire spread with wind and slope alignment especially between 1200-2000. Fire spread rate is being dominated by fine dead fuels and cured grasses. Live fuels are not contributing to fire spread at this time. Lake effect winds (up/ down lake) dominate lower and mid slopes; the fire is on a dry S/SW aspect with steep side drainages that provide strong upslope winds. Wind/slope alignment and/or lake wind will influence fire spread rate and direction. Expect down lake winds, with gusts to 15 mph by 1600; and 15 mph gusts from SSW on ridgetops by late afternoon.*

### Weather Summary

RED FLAG WARNING IN EFFECT FROM NOON MONDAY TO 11 PM PDT TUESDAY FOR HOT, DRY, AND UNSTABLE CONDITIONS  
\*See attached Fire Weather Forecast

### Fire Behavior Summary

**Fuels in the fire area** are composed of a mosaic of *Timber Litter, Grass, Timber with Understory, and Grass/Shrub* models. The fire is burning in the Rex Creek (2001) fire footprint. Primary tree species include mixed sizes and densities of Douglas Fir and Ponderosa Pine. Local timber litter is compact to fluffy. Brush and understory species include ceanothus, hardwoods, and dog-hair conifer reproduction. Large **snags and heavy downed fuel loadings are common throughout all areas**. Live woody and herbaceous fuels are seasonally moist, and not contributing to rates of spread; grasses are partially to fully cured depending on elevation and aspect. Fuel conditions change by aspect, previous fire history, and elevation. Most N and E aspects include 23-year-old brush and conifer trees.

*Today's potential fire behavior includes areas of fingering head fire runs, active flanking, and backing (with rollout) with wind/slope alignment. Expect rapid fire spread in fine dead fuels. Heavy fuels are retaining heat serving as ignition sources in dry fine fuels. Potential for exists for plume dominated fire behavior due to an unstable atmosphere in areas with heavy surface fuel loading. At higher elevations and north aspects, some grasses are still curing. Expect sustained very active fire behavior for next several days. Watch out for rapid slope reversal spread where it occurs. Expect lee-side spotting as fire reaches ridgelines (launch-pad).*

**\* FFM= 2%-3%, 1000hr. moisture=11%, Woody fuels 160%, Probability of Ignition-80 -90%, Max Spotting 0.5 miles or more with significant column development.**

Fuel Type	Rate of Spread	Flame Length	Backing ROS	Spot Size in 2-hours
...If your work area includes -	(CH/HR = FPM)	Feet	FPM	Acres
GR2 - Moderate load grass/shrub	45 - 50	4 - 5	1-2	250
SH2 - Moderate load shrub	3 - 4	2	< 1	
TU5 - High load Timber w/ Understory	12 - 14	8- 9 (torching)	1	20
TL8 - Long needle timber litter	15 - 17	4- 6	1 +	30

### Specific Assignments:

- Div. A** – Likely upslope short finger runs in draws, backing, with flanking in upper Meadow Cr. Monitor downstream backing rate.
- Div. S** – Expect backing and flanking fire in Lone Fir drainage. Potential exist for fire to spread across creek
- Shore Protection Group** – **Monitor up/down lake winds closely.** Expect rapid spread in fine fuels when fire becomes active.
- Other Br./Grp.** – Should not be affected by fire activity during the burn period. Monitor smoke direction and amount. Assess fuels.
- \*IA** – Ensure good size-up before engaging. Assess fire spread potential based on fuel, weather, topography and values at risk.
- Air Operations:** Hot. Locally heavy downwind smoke in drainages and aloft. Complex terrain, watch for lee-side turbulence.

### Safety

*Transition day.....short period to get up to speed. Review the Fire Orders and Watchout situations as they relate to the assignment...anticipate fire behavior and weather hazards, plan your actions in advance. Share and discuss the Fire Weather Forecast and Fire Behavior Forecast. LCES should be reviewed more frequently.....pull out the belt weather kit, post lookouts.....*

**RED FLAG WARNING IN EFFECT FROM NOON MONDAY TO 11 PM PDT TUESDAY FOR HOT, DRY, AND UNSTABLE CONDITIONS. These conditions have great potential increase fire activity**

*\*Today's Fire Behavior Forecast contains 712 words written for your situational awareness.*



## SAFETY MESSAGE

8 July 2024

**INCIDENT: Pioneer**

**OPERATIONAL PERIOD: 0700-2100**



### **Transition**

**\*Over communicate top down and bottom up. Positive validation, all personnel need to understand the plan and any operational changes.**

### **Fire Weather/Heat**

**\*Fire behavior should not dictate an unwarranted “urgent” response. Understand the physical limitations people have with the expected heat index.**

**SAFETY OFFICERS: Marshall Brown, Joshua Northrup**

## Division/Group Assignment List (ICS 204 WF)

Controlled Unclassified Information//Basic

<b>1. Incident Name:</b>				<b>3.</b>		
PIONEER				<b>Branch:</b>  I/II	<b>Division/Group:</b>  A	
<b>2. Operational Period:</b> 0700-2100						
Date/Time From: 07/08/2024 0700 MON		Date/Time To: 07/08/2024 2100 MON				
<b>4. Operations Personnel</b>						
<b>OPERATIONS CHIEF</b>		AARON ROWE, LONNIE NEWTON (T)		<b>BRANCH DIRECTOR</b>		SCOTT EBEL, JOSH VERELLEN (T)
<b>DIVISION/GROUP SUPERVISOR</b>		SHAWN OTTO, CHRIS RAMISKEY (T)		<b>AIR OPS BRANCH DIRECTOR</b>		PAUL BLAFOUR
<b>5. Resources Assigned this Period</b>						
Strike Team / Task Force / Resource Designator		LWD	Leader	Number Persons	Drop Off PT./Time	Pick Up PT./Time
O-352 SOFC		07/16	KRIS CRODDY	1	DP 22-MOORE POINT/0700	DP22-MOORE POINT/2100
O-175 SOFR		07/11	MELISSA MOORE	1	DP 22-MOORE POINT/0700	DP22-MOORE POINT/2100
O-180 TFLD		07/10	JOE LANDBURG	1	DP 22-MOORE POINT/0700	DP22-MOORE POINT/2100
O-266 TFLD (T)		07/11	FRANK BOJORQUEZ	1	DP 22-MOORE POINT/0700	DP22-MOORE POINT/2100
C-29 CRW1 BAKER RIVER IHC		07/11	GARY CHICKS	24	DP 22-MOORE POINT/0700	DP22-MOORE POINT/2100
C-30 CRW1 ENTIAT IHC		07/19	JOHN WIRTH	23	DP 22-MOORE POINT/0700	DP22-MOORE POINT/2100
C-28 CR2I CRD		07/15	TYLER HERDMAN	22	DP 22-MOORE POINT/0700	DP22-MOORE POINT/2100
O-359 MEDIC 12		07/16	ETHAN BIEDERMAN	1	DP 22-MOORE POINT/0700	DP22-MOORE POINT/2100
O-310 EMT 5		07/14	DAVE REPNIK	1	DP 22-MOORE POINT/0700	DP22-MOORE POINT/2100
<b>8. Division/Group Communication Summary</b>						
Function	Channel	RX Frequency N/W	RX Tone/NAC	TX Frequency N/W	TX Tone/NAC	Mode
COMMAND						
TACTICAL						
LOGISTICS						
AIR TO GROUND						
<b>9. Prepared By (Resource Unit Leader)</b>			<b>Approved By (Planning Section Chief)</b>		<b>Date</b>	<b>Time</b>
JENNIFER NORTON			JILL JOHNSON		07/07/2024	2100



## Division/Group Assignment List (ICS 204 WF)

Controlled Unclassified Information//Basic

<b>1. Incident Name:</b>				<b>3.</b>			
PIONEER				<b>I/II</b>	<b>A</b>		
<b>2. Operational Period:</b> 0700-2100							
Date/Time From: 07/08/2024 0700 MON		Date/Time To: 07/08/2024 2100 MON					
<b>4. Operations Personnel</b>							
<b>OPERATIONS CHIEF</b>		AARON ROWE, LONNIE NEWTON (T)		<b>BRANCH DIRECTOR</b>		SCOTT EBEL, JOSH VERELLEN (T)	
<b>DIVISION/GROUP SUPERVISOR</b>		SHAWN OTTO, CHRIS RAMISKEY (T)		<b>AIR OPS BRANCH DIRECTOR</b>		PAUL BLAFOUR	
<b>5. Resources Assigned this Period</b>							
Strike Team / Task Force / Resource Designator		LWD	Leader	Number Persons	Drop Off PT./Time	Pick Up PT./Time	
<b>6. Control Operations/Work Assignments:</b>							
<p>Task: Contain fire spread to the northwest where terrain and fuels allow for highest probability of success. Assess fire perimeter progression to the north and west at higher elevations. Implement point protection efforts on federal &amp; private infrastructure.</p> <p>Purpose: To slow fire progression, provide time for suppression tactics, and continue to prep around critical values.</p> <p>End state: Minimize fire impacts to critical values including private inholdings and Forest Service infrastructure.</p>							
<b>7. Special Instructions:</b>							
<p>-In large or long term spike camps use helicopters, boats, or pack stock to deliver portable backcountry latrines and remove human waste if necessary. If camp does not have adequate pack, boat, or air support for human waste management, establish community latrines well away from water sources and common areas. Use human waste bags, if necessary.</p> <p>-Minimize ground disturbance on the Moore Point and Meadow Creek alluvial fans in order to protect sensitive resources.</p> <p>-Hose used from Prince Creek to Moore Pt: contaminated with invasive plants. Do not reuse. Backhaul to Moore Pt DP22 and store in "infested hose" area at Moore Pt until decontaminated.</p> <p>-Ensure hazard mitigations and IWI protocols are in place before taking action.</p> <p>-** Denotes available for Initial Attack</p>							
<b>8. Division/Group Communication Summary</b>							
Function	Channel	RX Frequency N/W	RX Tone/NAC	TX Frequency N/W	TX Tone/NAC	Mode	
COMMAND							
TACTICAL							
LOGISTICS							
AIR TO GROUND							
<b>9. Prepared By (Resource Unit Leader)</b>			<b>Approved By (Planning Section Chief)</b>			<b>Date</b>	<b>Time</b>
JENNIFER NORTON			JILL JOHNSON			07/07/2024	2100

## Division/Group Assignment List (ICS 204 WF)

Controlled Unclassified Information//Basic

<b>1. Incident Name:</b>				<b>3.</b>			
PIONEER				<b>I/II</b>		<b>D</b>	
<b>2. Operational Period:</b> 0700-2100							
Date/Time From: 07/08/2024 0700 MON		Date/Time To: 07/08/2024 2100 MON					
<b>4. Operations Personnel</b>							
<b>OPERATIONS CHIEF</b>		AARON ROWE, LONNIE NEWTON (T)		<b>BRANCH DIRECTOR</b>		SCOTT EBEL, JOSH VERELLEN (T)	
<b>DIVISION/GROUP SUPERVISOR</b>		SHAWN OTTO, CHRIS RAMISKEY (T)		<b>AIR OPS BRANCH DIRECTOR</b>		PAUL BALFOUR	
<b>5. Resources Assigned this Period</b>							
Strike Team / Task Force / Resource Designator		LWD	Leader	Number Persons	Drop Off PT./Time	Pick Up PT./Time	
O-353 SOFC		07/17	PHILLIP BORDELON	1	STEHEKIN/0700	STEHEKIN/0700	
O-276 HECM		07/12	REYNALDO JUBAN	1	STEHEKIN/0700	STEHEKIN/0700	
O-277 HECM		07/12	JASON EVANS	1	STEHEKIN/0700	STEHEKIN/0700	
O-278 SMOD CREW 84		07/09	GEOFF HIBBS	5	STEHEKIN/0700	STEHEKIN/0700	
**O-218 WFM2 OLYMPIC		07/06	JONAH GRAY	10	STEHEKIN/0700	STEHEKIN/0700	
O-372 LEAD READ		07/19	JACK OELFKE	1	STEHEKIN/0700	STEHEKIN/0700	
O-167 ARCH		07/12	JASON WRIGHT	1	STEHEKIN/0700	STEHEKIN/0700	
O-370 ARCH (T)		07/18	HENRY EATON	1	STEHEKIN/0700	STEHEKIN/0700	
O-371 REAF		07/20	HEATHER RICKLEFF	1	STEHEKIN/0700	STEHEKIN/0700	
O-376 REAF			ROGER CHRISTOPHERSEN	1	STEHEKIN/0700	STEHEKIN/0700	
O-165 REMS 2		07/10	BRAYDEN KIRK	4	STEHEKIN/0700	STEHEKIN/0700	
O-304 LTAN		07/18	DAN OSTMANN	1	STEHEKIN/0700	STEHEKIN/0700	
E-89 DRIVER		07/12	PHILLIP BOSSEN	1	STEHEKIN/0700	STEHEKIN/0700	
<b>8. Division/Group Communication Summary</b>							
Function	Channel	RX Frequency N/W	RX Tone/NAC	TX Frequency N/W	TX Tone/NAC	Mode	
COMMAND							
TACTICAL							
LOGISTICS							
AIR TO GROUND							
<b>9. Prepared By (Resource Unit Leader)</b>			<b>Approved By (Planning Section Chief)</b>			<b>Date</b>	<b>Time</b>
JENNIFER NORTON			JILL JOHNSON			07/07/2024	2000

## Division/Group Assignment List (ICS 204 WF)

Controlled Unclassified Information//Basic

<b>1. Incident Name:</b>			<b>3.</b>			
PIONEER			<b>I/II</b>	<b>D</b>		
<b>2. Operational Period:</b> 0700-2100						
Date/Time From:	MON	Date/Time To:	MON			
07/08/2024 0700		07/08/2024 2100				
<b>4. Operations Personnel</b>						
<b>OPERATIONS CHIEF</b>		AARON ROWE, LONNIE NEWTON (T)		<b>BRANCH DIRECTOR</b>		SCOTT EBEL, JOSH VERELLEN (T)
<b>DIVISION/GROUP SUPERVISOR</b>		SHAWN OTTO, CHRIS RAMISKEY (T)		<b>AIR OPS BRANCH DIRECTOR</b>		PAUL BALFOUR
<b>5. Resources Assigned this Period</b>						
Strike Team / Task Force / Resource Designator	LWD	Leader	Number Persons	Drop Off PT./Time	Pick Up PT./Time	
<b>6. Control Operations/Work Assignments:</b>						
<p><b>Task:</b> Continue construction of contingency lines around the community of Stehekin.</p> <p><b>Purpose:</b> Minimize fire impacts to critical values including private inholdings, the community of Stehekin, and Forest Service infrastructure.</p> <p><b>End state:</b> Critical values including private inholdings, the community of Stehekin, and Forest Service infrastructure are not impacted by the Pioneer fire, while minimizing fire impacts and acres burned utilizing historic wildfire control features and natural barriers.</p>						
<b>7. Special Instructions:</b>						
<p>-All operational personnel working on USFS lands will need to conduct a thorough inspection for invasive species seeds on boots including laces, clothing, and gear prior to entering NPS lands.</p> <p>-Only fresh (direct from the cache) hose should be utilized on NPS lands to prevent the transport of invasive species seeds.</p> <p>-Hose used on USFS lands should not be used on NPS lands and hose used on NPS lands should not be used on USFS lands to prevent the spread of invasives species seeds.</p> <p>-Cargo loads being transported onto NPS lands should be inspected for invasive weed seed prior to flight.</p> <p>-NPS Resource Avoidance Area Flagging is yellow with red polka dots. Contact NPS READs before working in areas where this flagging is present.</p> <p>-Ensure hazard mitigations and IWI protocols are in place before taking action.</p> <p>-** Denotes available for Initial Attack</p>						
<b>8. Division/Group Communication Summary</b>						
Function	Channel	RX Frequency N/W	RX Tone/NAC	TX Frequency N/W	TX Tone/NAC	Mode
COMMAND						
TACTICAL						
LOGISTICS						
AIR TO GROUND						
<b>9. Prepared By (Resource Unit Leader)</b>			<b>Approved By (Planning Section Chief)</b>		<b>Date</b>	<b>Time</b>
JENNIFER NORTON			JILL JOHNSON		07/07/2024	2000

## Division/Group Assignment List (ICS 204 WF)

Controlled Unclassified Information//Basic

<b>1. Incident Name:</b>				<b>3.</b>		
PIONEER				<b>IV</b>	<b>S</b>	
<b>2. Operational Period:</b> 0700-2100						
Date/Time From: 07/08/2024 0700 MON		Date/Time To: 07/08/2024 2100 MON				
<b>4. Operations Personnel</b>						
<b>OPERATIONS CHIEF</b>		AARON ROWE, LONNIE NEWTON (T)		<b>BRANCH DIRECTOR</b>		TIM BARNETT
<b>DIVISION/GROUP SUPERVISOR</b>		MATT KENNEDY		<b>AIR OPS BRANCH DIRECTOR</b>		PAUL BALFOUR
<b>5. Resources Assigned this Period</b>						
Strike Team / Task Force / Resource Designator		LWD	Leader	Number Persons	Drop Off PT./Time	Pick Up PT./Time
O-346 SOFR		07/14	DAVID ZUARES	1	CAMP 4 SPIKE/0700	CAMP 4 SPIKE/2100
O-179 TFLD		07/09	CHARLES HUMBERT	1	CAMP 4 SPIKE/0700	CAMP 4 SPIKE/2100
**O-249 TFLD (T)		07/09	MARK HARPER	1	ICP/0700	ICP/2100
O-243 HEQB		07/08	EVERARDO SANTILLAN	1	ICP/0700	ICP/2100
C-35 CRW1 UNION IHC		07/20	ERIC JORGENSON	22	CAMP 4/0700	CAMP 4/2100
C-23 CR2I SRV #1		07/10	JAIME MEDRANO	1	ICP/0700	ICP/2100
C-34 CR2I WALLOWA		07/20	KIRA SANTULLI	20	ICP/0700	ICP/2100
**E-191 ENG3 RATTLESNAKE RIDGE		07/15	BRANDON MARSH	3	ICP/0700	ICP/2100
E-73 WTS1 STRAND TENDERS		07/11	WADE STRAND	1	CAMP 4 SPIKE/0700	CAMP 4 SPIKE/2100
E-78 WTS2 KING HYDROSEEDING		07/10		1	CAMP 4 SPIKE/0700	CAMP 4 SPIKE/2100
E-208 SKG2 NW DIESEL DUDES		07/20		2	CAMP 4 SPIKE/0700	CAMP 4 SPIKE/2100
E-92 DZR3 BATCHELOR EXCAVATION		07/14	JAY BATCHELOR	2	ICP/0700	ICP/2100
O-43 REMS 1		07/09	RAY STORM	4	CAMP 4 SPIKE/0700	CAMP 4 SPIKE/2100
O-358 MEDIC 11		07/16	SAVANAH MCLAUGHLIN	1	CAMP 4 SPIKE/0700	CAMP 4 SPIKE/2100
O-416 MEDIC 15		07/21	ROBERT RUSZALA	1	ICP/0700	ICP/2100
<b>8. Division/Group Communication Summary</b>						
Function	Channel	RX Frequency N/W	RX Tone/NAC	TX Frequency N/W	TX Tone/NAC	Mode
COMMAND						
TACTICAL						
LOGISTICS						
AIR TO GROUND						
<b>9. Prepared By (Resource Unit Leader)</b>			<b>Approved By (Planning Section Chief)</b>		<b>Date</b>	<b>Time</b>
JENNIFER NORTON			JILL JOHNSON		07/07/2024	2000

## Division/Group Assignment List (ICS 204 WF)

Controlled Unclassified Information//Basic

<b>1. Incident Name:</b>			<b>3.</b>			
PIONEER			<b>IV</b>	<b>S</b>		
<b>2. Operational Period:</b> 0700-2100						
Date/Time From:	MON	Date/Time To:	MON			
07/08/2024 0700		07/08/2024 2100				
<b>4. Operations Personnel</b>						
<b>OPERATIONS CHIEF</b>		AARON ROWE, LONNIE NEWTON (T)		<b>BRANCH DIRECTOR</b>		TIM BARNETT
<b>DIVISION/GROUP SUPERVISOR</b>		MATT KENNEDY		<b>AIR OPS BRANCH DIRECTOR</b>		PAUL BALFOUR
<b>5. Resources Assigned this Period</b>						
Strike Team / Task Force / Resource Designator	LWD	Leader	Number Persons	Drop Off PT./Time	Pick Up PT./Time	
E-18 VUTV CM BACKCOUNTRY						
E-93 VUTV KWIK RESPONSE SUPPORT	07/14		1			
E-94 VUTV KWIK RESPONSE SUPPORT	07/14		1			
E-148 VUTV TOP GUN RES POLARIS RANGER1000						
E-149 VUTV TOP GUN RES POLARIS RANGER1000						
<b>6. Control Operations/Work Assignments:</b>						
<p><b>Task:</b> Identify and make necessary improvements to the control line and minimize impacts to the 8200 Road with road watering operations.</p> <p><b>Purpose:</b> To establish a barrier to fire to the east of Safety Harbor Creek.</p> <p><b>End state:</b> Control line anchored from South Navaree CG to Lake Chelan.</p>						
<b>7. Special Instructions:</b>						
<p>-Ensure hazard mitigations and IWI protocols are in place before taking action.</p> <p>-** Denotes available for Initial Attack</p>						
<b>8. Division/Group Communication Summary</b>						
Function	Channel	RX Frequency N/W	RX Tone/NAC	TX Frequency N/W	TX Tone/NAC	Mode
COMMAND						
TACTICAL						
LOGISTICS						
AIR TO GROUND						
<b>9. Prepared By (Resource Unit Leader)</b>			<b>Approved By (Planning Section Chief)</b>		<b>Date</b>	<b>Time</b>
JENNIFER NORTON			JILL JOHNSON		07/07/2024	2000

**Division/Group Assignment List (ICS 204 WF)**  
**Controlled Unclassified Information//Basic**

<b>1. Incident Name:</b>				<b>3.</b>		
PIONEER				Branch:  IV	Division/Group:  <b>CONTINGENCY/RO ADS</b>	
<b>2. Operational Period:</b> 0700-2100						
Date/Time From: 07/08/2024 0700 MON		Date/Time To: 07/08/2024 2100 MON				
<b>4. Operations Personnel</b>						
<b>OPERATIONS CHIEF</b>		AARON ROWE, LONNIE NEWTON (T)		<b>BRANCH DIRECTOR</b>		TIM BARNETT
<b>DIVISION/GROUP SUPERVISOR</b>		MATT ZIEGLER, STEVEN ABRAMS (T)		<b>AIR OPS BRANCH DIRECTOR</b>		PAUL BALFOUR
<b>5. Resources Assigned this Period</b>						
Strike Team / Task Force / Resource Designator	LWD	Leader	Number Persons	Drop Off PT./Time	Pick Up PT./Time	
O-267 SOFR	07/11	THOMAS TALBOT	1	ICP/0700	ICP/0700	
**O-239 TFLD	07/09	KORY GARRIE	1	ICP/0700	ICP/2100	
O-241 TFLD	07/09	JASON GREEN	1	ICP/0700	ICP/0700	
O-355 TFLD	07/09	JASON CONWAY	1	ICP/0700	ICP/0700	
**O-257 TFLD (T)	07/09	CRAIG MCDONALD	1	ICP/0700	ICP/0700	
O-333 HEQB	07/15	JED NEUMEIER	1	ICP/0700	ICP/0700	
O-344 FELB	07/15	JACOB HARVEY	1	ICP/0700	ICP/0700	
O-127 FMOD RAINSTORM	07/07	KENDALL CAIN	2	ICP/0700	ICP/0700	
O-128 FMOD RAINSTROM	07/07	MIKE LIND	2	ICP/0700	ICP/0700	
C-32 CR2I PATRICK	07/20	GARTH CHAMBERS	20	ICP/0700	ICP/0700	
C-33 CR2I NORTH PACIFIC	07/21		20	ICP/0700	ICP/0700	
E-76 WTS2 MOUNTAIN VIEW WILDFIRE	07/17	WICK FIFE	2	ICP/0700	ICP/0700	
E-83 WTS2 KING HYDROSEEDING	07/11	JOE IVIE	1	ICP/0700	ICP/0700	
E-157 WTS2 PINE MOUNTAIN EXC	07/23	BOB GOSS	1	ICP/0700	ICP/0700	
E-172 WTS2 UPPER VALLEY	07/16	SCOTT YOUNG	1	ICP/0700	ICP/0700	
E-173 WTS2 RIDGE TOP IRON	07/11	TIM WHITEHURST	1	ICP/0700	ICP/0700	
E-205 DZR3 DOUGLAS LOGGING	07/20	STEVE DOUGLAS	1	ICP/0700	ICP/0700	
E-103 MBM2 MARCON TIMBER	07/19	MARK FORESMAN	2	ICP/0700	ICP/0700	
E-104 MBM2 HAVILLAH LOGGING	07/19		2	ICP/0700	ICP/0700	
E-105 MBM2 JUSTIN PITTS TRUCKING	07/14	ADAM BERGSTROM	2	ICP/0700	ICP/0700	
<b>8. Division/Group Communication Summary</b>						
Function	Channel	RX Frequency N/W	RX Tone/NAC	TX Frequency N/W	TX Tone/NAC	Mode
COMMAND						
TACTICAL						
LOGISTICS						
AIR TO GROUND						
<b>9. Prepared By (Resource Unit Leader)</b>			<b>Approved By (Planning Section Chief)</b>		<b>Date</b>	<b>Time</b>
JENNIFER NORTON			JILL JOHNSON		07/07/2024	2000

**Division/Group Assignment List (ICS 204 WF)**  
**Controlled Unclassified Information//Basic**

<b>1. Incident Name:</b>				<b>3.</b>		
PIONEER				Branch:  IV	Division/Group:  <b>CONTINGENCY/RO ADS</b>	
<b>2. Operational Period:</b> 0700-2100						
Date/Time From: 07/08/2024 0700 MON		Date/Time To: 07/08/2024 2100 MON				
<b>4. Operations Personnel</b>						
<b>OPERATIONS CHIEF</b>		AARON ROWE, LONNIE NEWTON (T)		<b>BRANCH DIRECTOR</b>		TIM BARNETT
<b>DIVISION/GROUP SUPERVISOR</b>		MATT ZIEGLER, STEVEN ABRAMS (T)		<b>AIR OPS BRANCH DIRECTOR</b>		PAUL BALFOUR
<b>5. Resources Assigned this Period</b>						
Strike Team / Task Force / Resource Designator		LWD	Leader	Number Persons	Drop Off PT./Time	Pick Up PT./Time
E-151 MBM2 DUKES EQUIPMENT		07/24	NIK MARLEY	2	ICP/0700	ICP/0700
E-152 MBM2 AXSUS		07/17	EASTON ANDERSON	2	ICP/0700	ICP/0700
E-102 SKG2 DUKES EQUIPMENT		07/15	JUSTIN DURSTON	2	ICP/0700	ICP/0700
E-154 SKG2 WESTERN		07/23	RICK LAUMAN	2	ICP/0700	ICP/0700
E-155 SKG2 MOUNTAIN VIEW		07/21	BOB GIBSON	2	ICP/0700	ICP/0700
O-271 MEDIC 7		07/11	STEVE DRAB	1	ICP/0700	ICP/0700
O-383 MEDIC 13		07/18	ADAM BYLSKI	1	ICP/0700	ICP/0700
E-194 AMBO-2		07/15	ANNA REYNOLDS	2	ICP/0700	ICP/0700
E-69 FTRA MORRIS FORESTRY		07/07		1	ICP/0700	ICP/0700
E-19 VUTV BACKCOUNTRY RENTALS					ICP/0700	ICP/0700
E-44 VATV KIRCHER SHERMAN					ICP/0700	ICP/0700
<b>6. Control Operations/Work Assignments:</b>						
<b>Task:</b> Implement control lines from H41 to H46. Continue road maintenance on 4330 and 4010. Scout additional contingency lines from Cooper Mountain to Lake Chelan.						
<b>Purpose:</b> To protect critical values at risk.						
<b>End state:</b> To have established control lines in place that correspond to Pioneer Fire strategic plan.						
<b>7. Special Instructions:</b>						
-Ensure hazard mitigations and IWI protocols are in place before taking action.						
-Contingency resources working DIV H: Do not draft from Gold Creek above DP-102 or from Black Canyon Creek.						
-Work with READS to maintain resource protection.						
-Ensure hazard mitigations and IWI protocols are in place before taking action.						
-** Denotes available for Initial Attack						
<b>8. Division/Group Communication Summary</b>						
Function	Channel	RX Frequency N/W	RX Tone/NAC	TX Frequency N/W	TX Tone/NAC	Mode
COMMAND						
TACTICAL						
LOGISTICS						
AIR TO GROUND						
<b>9. Prepared By (Resource Unit Leader)</b>			<b>Approved By (Planning Section Chief)</b>		<b>Date</b>	<b>Time</b>
JENNIFER NORTON			JILL JOHNSON		07/07/2024	2000

## Division/Group Assignment List (ICS 204 WF)

Controlled Unclassified Information//Basic

<b>1. Incident Name:</b>			<b>3.</b>			
PIONEER			<b>IV</b>	<b>FIRING</b>		<b>Branch:</b>
<b>2. Operational Period:</b> 0700-2100						<b>Division/Group:</b>
Date/Time From:	MON	Date/Time To:	MON			
07/08/2024 0700		07/08/2024 2100				
<b>4. Operations Personnel</b>						
<b>OPERATIONS CHIEF</b>		AARON ROWE, LONNIE NEWTON (T)		<b>BRANCH DIRECTOR</b>		TIM BARNETT
<b>DIVISION/GROUP SUPERVISOR</b>		FIDEL VERDUZCO		<b>AIR OPS BRANCH DIRECTOR</b>		PAUL BEDFOUR
<b>5. Resources Assigned this Period</b>						
Strike Team / Task Force / Resource Designator	LWD	Leader	Number Persons	Drop Off PT./Time	Pick Up PT./Time	
O-400 TFLD	07/21	BENJAMIN EDDINGS	1	CAMP 4 SPIKE/0700	CAMP 4 SPIKE/2100	
C-31 CRW1 LA GRANDE	07/19	WILL PAGE	23	CAMP 4 SPIKE/0700	CAMP 4 SPIKE/2100	
C-36 CRW1 ZIGZAG	07/20	SANDRA SPERRY	25	ICP/0700	ICP/0700	
E-192 ENG5 E4406	07/15	SETH REYNOLDS	4	ICP/0700	ICP/2100	
E-193 ENG5 E4501	07/15	CONNOR RUPERT	4	ICP/0700	ICP/2100	
<b>6. Control Operations/Work Assignments:</b>						
<p><b>TASK:</b> Prepare to implement firing operations as fuel and weather conditions allow in Division Sierra</p> <p><b>PURPOSE:</b> Prevent main fire from advancing east of Nelson Butte and impacting values at risk down lake</p> <p><b>END STATE:</b> Fire is checked along established lines within Division Sierra, further preventing risk to values down lake</p>						
<b>7. Special Instructions:</b>						
-Ensure hazard mitigations and IWI protocols are in place before taking action.						
<b>8. Division/Group Communication Summary</b>						
Function	Channel	RX Frequency N/W	RX Tone/NAC	TX Frequency N/W	TX Tone/NAC	Mode
COMMAND						
TACTICAL						
LOGISTICS						
AIR TO GROUND						
<b>9. Prepared By (Resource Unit Leader)</b>			<b>Approved By (Planning Section Chief)</b>		<b>Date</b>	<b>Time</b>
JENNIFER NORTON			JILL JOHNSON		07/07/2024	2000





## Division/Group Assignment List (ICS 204 WF)

Controlled Unclassified Information//Basic

<b>1. Incident Name:</b>			<b>3.</b>				
PIONEER			V	Branch:		Division/Group:	
<b>2. Operational Period:</b> 0700-2100				<b>LAKE SHORE</b>			
Date/Time From: 07/08/2024 0700 MON		Date/Time To: 07/08/2024 2100 MON					
<b>4. Operations Personnel</b>							
<b>OPERATIONS CHIEF</b>		AARON ROWE, LONNIE NEWTON (T)		<b>BRANCH DIRECTOR</b>		JEROMY WILSON	
<b>DIVISION/GROUP SUPERVISOR</b>		JON STONELAKE, NICK WIGLE (T)		<b>AIR OPS BRANCH DIRECTOR</b>		PAUL BELFOUR	
<b>5. Resources Assigned this Period</b>							
Strike Team / Task Force / Resource Designator		LWD	Leader	Number Persons	Drop Off PT./Time	Pick Up PT./Time	
O-182 WFM1 SELWAY		07/08	BRIAL PERESON	14	DP-30/0700	DP-30/2100	
**C-19 CR2I CLE ELUM		07/08	CRIS MACHADO	18	SAFETY HARBOR/0700	SAFETY HARBOR/2100	
A-78 UAR3 UR31		07/09	MARSHAL WALLACE	4	LUCERNE/0700	LUCERNE/2100	
O-307 MEDIC 8		07/12	RICK KELLY	1	SAFETY HARBOR/0700	SAFETY HARBOR/2100	
O-417 EMPF LAURA LEE KRAUSE		07/21	LAURA KRAUSE	1	SAFETY HARBOR/0700	SAFETY HARBOR/2100	
<b>6. Control Operations/Work Assignments:</b>							
<p><b>Task:</b> Protect Forest Service infrastructure and private property from Pioneer Creek to Mitchell Creek</p> <p><b>Purpose:</b> To slow fire progression, provide time for suppression tactics, and continue to prep around critical values.</p> <p><b>End state:</b> Minimize fire impacts to critical values including private inholdings and Forest Service infrastructure</p>							
<b>7. Special Instructions:</b>							
<p>-In large or long term spike camps use helicopters, boats, or pack stock to deliver portable backcountry latrines and remove human waste if necessary. If camp does not have adequate pack, boat, or air support for human waste management, establish community latrines well away from water sources and common areas. Use human waste bags, if necessary.</p> <p>-Ensure hazard mitigations and IWI protocols are in place before taking action.</p> <p>-Hose used from Prince Creek to Moore Pt: contaminated with invasive plants. Do not reuse. Backhaul to Moore Pt DP22 and store in "infested hose" area at Moore Pt until decontaminated.</p> <p>-Ensure hazard mitigations and IWI protocols are in place before taking action.</p> <p>-** Denotes available for Initial Attack</p>							
<b>8. Division/Group Communication Summary</b>							
Function	Channel	RX Frequency N/W	RX Tone/NAC	TX Frequency N/W	TX Tone/NAC	Mode	
COMMAND							
TACTICAL							
LOGISTICS							
AIR TO GROUND							
<b>9. Prepared By (Resource Unit Leader)</b>			<b>Approved By (Planning Section Chief)</b>		<b>Date</b>		<b>Time</b>
JENNIFER NORTON			JILL JOHNSON		07/07/2024		2000

**Division/Group Assignment List (ICS 204 WF)**  
**Controlled Unclassified Information//Basic**

<b>1. Incident Name:</b>				<b>3.</b>		
PIONEER				Branch:  V	Division/Group:  <b>BOAT</b>	
<b>2. Operational Period:</b> 0700-2100						
Date/Time From: 07/08/2024 0700 MON		Date/Time To: 07/08/2024 2100 MON				
<b>4. Operations Personnel</b>						
<b>OPERATIONS CHIEF</b>		AARON ROWE, LONNIE NEWTON (T)		<b>BRANCH DIRECTOR</b>		JEROMY WILSON
<b>DIVISION/GROUP SUPERVISOR</b>		SAM STEINHOUSER, SETH ELLIS (T)		<b>AIR OPS BRANCH DIRECTOR</b>		PAUL BELFOUR
<b>5. Resources Assigned this Period</b>						
Strike Team / Task Force / Resource Designator	LWD	Leader	Number Persons	Drop Off PT./Time	Pick Up PT./Time	
O-342 TFLD	07/10	MIKE HILL	1	LUCERNE/0700	LUCERNE/2100	
O-248 TFLD (T)	07/09	JASON WARD	1	LUCERNE/0700	LUCERNE/2100	
O-263 TFLD (T)	07/11	AARON PEDERSEN	1	ICP/0700	ICP/2100	
O-369 TFLD (T)	07/16	KATY GIDDINGS	1	ICP/0700	ICP/2100	
O-331 HEQB	07/16	BRANDON REED	1	LUCERNE/0700	LUCERNE/2100	
O-332 HEQB	07/15	ERIC WEINKE	1	LUCERNE/0700	LUCERNE/2100	
O-354 HEQB	07/16	LOGAN PIKE	1	LUCERNE/0700	LUCERNE/2100	
O-361 HEQB	07/16	THOMAS DOWDY	1	LUCERNE/0700	LUCERNE/2100	
O-368 HEQB (T)	07/16	COLE BINGHAM	1	LUCERNE/0700	LUCERNE/2100	
E-1 TBOT WA-NCP BOAT *CWN		SONJA SHAW	1	STEHEKIN/0700	STEHEKIN/2100	
E-3 TBOT CHELAN CO. F&R#7 *O/S		BRANDON ASHER	2	LUCERNE/0700	LUCERNE/2100	
E-12 TBOT CHELAN RD *M-SA		DICK GORDON	1	FS DOCK/0700	FS DOCK/2100	
E-43 TBOT LLAMAS BOAT *O/S		GAYLE THOMAS	1	FS DOCK/0700	FS DOCK/2100	
E-91 TBOT DNR/MUD PUPPY	07/13	KURT HEIKKILA	1	LUCERNE/0700	LUCERNE/2100	
E-98 TBOT CHELAN COUNTY SHERIFFS *O/S	07/14	RICH MAGNUSSEN	2	FS DOCK/0700	FS DOCK/2100	
E-120 TBOT PILGRIM	07/10	JUSTIN GAVIN	3	FS DOCK/0700	FS DOCK/2100	
E-121 TBOT BRINNON FIRE	07/12	CHRISTOPHER DOLAN	2	LUCERNE/0700	LUCERNE/2100	
O-357 MEDIC 10	07/15	SEAN HENDRON	1	LUCERNE/0700	LUCERNE/2100	
<b>8. Division/Group Communication Summary</b>						
Function	Channel	RX Frequency N/W	RX Tone/NAC	TX Frequency N/W	TX Tone/NAC	Mode
COMMAND						
TACTICAL						
LOGISTICS						
AIR TO GROUND						
<b>9. Prepared By (Resource Unit Leader)</b>			<b>Approved By (Planning Section Chief)</b>		<b>Date</b>	<b>Time</b>
JENNIFER NORTON			JILL JOHNSON		07/07/2024	2000

## Division/Group Assignment List (ICS 204 WF)

Controlled Unclassified Information//Basic

<b>1. Incident Name:</b>			<b>3.</b>			
PIONEER			<b>v</b>	<b>BOAT</b>		<b>Branch:</b>
<b>2. Operational Period:</b> 0700-2100						<b>Division/Group:</b>
Date/Time From:	MON	Date/Time To:	MON			
07/08/2024 0700		07/08/2024 2100				
<b>4. Operations Personnel</b>						
<b>OPERATIONS CHIEF</b>		AARON ROWE, LONNIE NEWTON (T)		<b>BRANCH DIRECTOR</b>		JEROMY WILSON
<b>DIVISION/GROUP SUPERVISOR</b>		SAM STEINHOUSER, SETH ELLIS (T)		<b>AIR OPS BRANCH DIRECTOR</b>		PAUL BELFOUR
<b>5. Resources Assigned this Period</b>						
Strike Team / Task Force / Resource Designator	LWD	Leader	Number Persons	Drop Off PT./Time	Pick Up PT./Time	
O-308 EMT 4	07/12	JUSTIN DOMINGUEZ	1	LUCERNE/0700	LUCERNE/2100	
E-201 TBOT ENVIRONMENTAL SERVICES						
E-202 TBOT ENVIRONMENTAL SERVICES						
<b>6. Control Operations/Work Assignments:</b>						
<p><b>Task:</b> Provide logistical needs for all fire activities on navigable waters.</p> <p><b>Purpose:</b> Adequately support the needs of incident personnel in areas not accessible by roads.</p> <p><b>End state:</b> Deliver supplies and personnel providing a timely, safe and effective operation.</p>						
<b>7. Special Instructions:</b>						
<p>-Follow instructions in IAP for requesting Ferry Tickets.</p> <p>-All emergency medical requests for boats go through Pioneer Communications.</p> <p>-* O/S – Operator Swaps As Needed, *CWN – Call When Needed, *M-SA – Operator takes every Sunday off</p>						
<b>8. Division/Group Communication Summary</b>						
Function	Channel	RX Frequency N/W	RX Tone/NAC	TX Frequency N/W	TX Tone/NAC	Mode
COMMAND						
TACTICAL						
LOGISTICS						
AIR TO GROUND						
<b>9. Prepared By (Resource Unit Leader)</b>			<b>Approved By (Planning Section Chief)</b>		<b>Date</b>	<b>Time</b>
JENNIFER NORTON			JILL JOHNSON		07/07/2024	2000

**Division/Group Assignment List (ICS 204 WF)**  
**Controlled Unclassified Information//Basic**

<b>1. Incident Name:</b>				<b>3.</b>			
PIONEER				v		<b>STRUCTURE</b>	
<b>2. Operational Period:</b> 0700-2100							
Date/Time From: 07/08/2024 0700 MON		Date/Time To: 07/08/2024 2100 MON					
<b>4. Operations Personnel</b>							
<b>OPERATIONS CHIEF</b>		AARON ROWE, LONNIE NEWTON (T)		<b>BRANCH DIRECTOR</b>		JEROMY WILSON	
<b>DIVISION/GROUP SUPERVISOR</b>		SCOTT CLEAVE		<b>AIR OPS BRANCH DIRECTOR</b>		PAUL BELFOUR	
<b>5. Resources Assigned this Period</b>							
Strike Team / Task Force / Resource Designator		LWD	Leader	Number Persons	Drop Off PT./Time	Pick Up PT./Time	
E-233 ENG5		07/21		3	ICP/0700	ICP/2100	
E-234 ENG6 E3261		07/21		4	ICP/0700	ICP/2100	
<b>6. Control Operations/Work Assignments:</b>							
<p><b>TASK:</b> Begin assessment of risk to structures/infrastructure near Manson, working with local partners and authorities</p> <p><b>PURPOSE:</b> Plan for and mitigate potential long-term impact to communities down lake from fire</p> <p><b>END STATE:</b> Plan has been developed and mitigation implemented for protection of structures in and around Manson</p>							
<b>7. Special Instructions:</b>							
<p>-Ensure hazard mitigations and IWI protocols are in place before taking action.</p> <p>-** Denotes available for Initial Attack</p>							
<b>8. Division/Group Communication Summary</b>							
Function	Channel	RX Frequency N/W	RX Tone/NAC	TX Frequency N/W	TX Tone/NAC	Mode	
COMMAND							
TACTICAL							
LOGISTICS							
AIR TO GROUND							
<b>9. Prepared By (Resource Unit Leader)</b>			<b>Approved By (Planning Section Chief)</b>			<b>Date</b>	<b>Time</b>
JENNIFER NORTON			JILL JOHNSON			07/07/2024	2000

AIR OPERATIONS SUMMARY ICS-220						Time Prepared 18:00		Date Prepared 7/7/2024		Prepared By Lance Jorg - ASGS(t) & Paul Balford - AOB			
Incident Name / Number Pioneer / WA-SES-000173		Sunrise 05:11	Sunset 20:59	Airport S10	Pumpkin 21:29	Shutdown 21:00		Operational Period - Date 7/8/2024		Operational Period - Time 0700-2100			
General Remarks, Safety Notes, Hazards, Air Operations Special Equipment, etc.:						Helibase Information		TFR (A-74) Surface to 10,000' 4/6779 TFR Freq 123.4000 In Effect - 24 Hours		Medivac Ship Information			
<p><i>*Order All Aircraft over Command to Helibase.</i></p> <p><i>*All GPS coordinates to be collected in Degrees, Decimal, and Minutes (DMM).</i></p> <p><i>*Be mindful of all overhead and environmental hazards while working with aircraft.</i></p> <p><i>*Clear drop area/line before initiating drop sequence.</i></p> <p><i>*Sanitize Buckets if dipping out of Columbia River before changing water sources.</i></p> <p><i>*** WINDS: return to helibase if winds become unmanageable.</i></p> <p><i>*Aviation daily cost to: 2024.pioneer.finance@firenet.gov</i></p> <p><i>*Aviation daily cost to: pioneerhelibase2024@gmail.com</i></p>						<b>Pioneer HB Valley HB</b> Location Location 47 51.96 N 48 25.567 N 119 56.56 W 120 08.513 W		<b>Helispots</b> H1   48 10.755N / 120 31.803W H5   48 12.162N / 120 35.447W H10   48 14.050N / 120 36.461W H12   48 13.325N / 120 35.908W H14 (Stehekin A/P)   48 20.75N / 120 43.25W H15   48 08.754N / 120 29.813W H16   48 07.74N / 120 29.55W H25   47 59.212N / 120 16.526W		<b>Medivac ship: N234BH, AS-350B3</b> Call Helibase to launch Medical onboard: EMT and Litter Kit <b>Request Procedure for This Aircraft:</b> Commo on Command, and A/G's  <b>Short-Haul Platform:</b> <b>MOCA N125CL, AS-350B3e</b> Operational Hours: 0900 to 2100 Order through AOB/Helibase/CWICC HMGB: Teague Walsh-Felz, Cell: (608) 354-4762			
Incident Frequencies	RX	Tone	TX	Tone	AM/FM	Position	Name	Phone		EQUIPMENT/SUPPLIES			
Air to Air Primary (A-8)	123.4000		123.4000		AM	AOBD	Paul Balfour	(509) 993-8739		Commo Trailer (Pioneer)	E-20		
Air to Air Secondary (A-9)	118.2750		118.2750		AM	ASGS	Tim Lyda	(541) 761-2676		Hand Wash Station (Pioneer)	E-47		
						ASGS(t)	Lance Jorg	(971) 291-7443		Mobile Office Trailer (Pioneer)	E-224		
A/G Pri Tactical (A-10)	169.1500		169.1500		FM	HEBM Pioneer	Anika Peila	(406) 366-0938		Water Tender (Pioneer)	E-77		
A/G Sec Operational (A-11)	168.4000		168.4000		FM	HEBM(t) Pioneer	Will Foster	(970) 218-5447		Water Tender (Pioneer)	E-14		
A/G 3 (TOLC)	166.6125		166.6125		FM	HEBM Valley	Jerry Rule	(253) 548-7711		Commo Trailer (Valley)	E-150		
						HEBM(t) Valley	Willow Merritt	(503) 250-4597		Water Tender (Valley)	E-158		
DECK	163.1000		163.1000		FM								
COMMAND	See ICS 205 Communications Plan					ATGS/HLCO	Jamie Lilienthal	(541) 529-9492					
						MOCA, Short Haul, H125CL	Teague Walsh-Felz	(608) 354-4762					
VMED 29	155.3475	156.7	155.3475	156.7	FM	UAS-31	Marshall Wallace	(509) 670-6365					
AIR GUARD	168.6250		168.6250	110.9	FM	UAS - Baker River IHC	Lance Barajas	(520) 576-4520					
						UAS - Entiat IHC	Hannah Coolidge	(301) 919-9973					
National Flight Following	168.6500	110.9	168.6500	110.9	FM	CWICC	Aircraft Desk	(509) 884-3473 ext. 2					
						OWF-UAO	Cory Dolberry	(509) 668-2801					
HELICOPTERS - Assigned							HELICOPTERS - GACC Prepo and Lend/Lease						
FAA #	TYPE	Make/Model	Helibase	Start	Avail	Remarks	FAA #	TYPE	Make/Model	Airport	Avail	Remarks	
HB-16FH (A-22)	1	UH-60	Valley	0800	0900	BKT/LL	H-205TK	2	Bell 205A	Chelan	0800	0900	**Unavailable**
HB-161KA (A-24)	1	K-1200	Valley	0800	0900	BKT/LL							
HB-344RA (A-45)	1	CH-47D	Valley	0800	0900	BKT/LL							
N628CK (A-130)	1	SH-3H	Valley	0800	0900	BKT/LL							
N381SH (A-129)	1	UH-60	Valley	0800	0900	BKT/LL							
H-527 (H-811KA) (A-94)	2	Bell 212HP	Chelan	0800	0900	BKT/LL/Pax							
H-669H (A-98)	2	Bell 205 A1 ++	Chelan	0800	0900	BKT/LL/Pax							
H-234BH (A-99)	3	AS-350B3	Chelan	0800	0900	Recon/BKT/Medical							
H-544AS (A-60)	3	AS-350B3	Chelan	0800	0900	HLCO/Recon							
H-407RL (A-1)	3	Bell 407HP	Chelan	0800	0900	Short Haul/Recon							
H-125CL (A-91)	3	AS-350B3e	WEN	0800	0900	Short Haul/Recon							
UAS							FIXED WING AA/HLCO						
Call Sign	Type	Make/Model	Base	Start	Avail	Remarks	FAA #	Call Sign	Make/Model	Base	Start	Avail	Remarks
UMR-31	3	AltaX	Lucerne	0600	2200	IR/PSD	N-197GB	617	Commander	WEN	0900	1000	Wenatchee IA (not assigned)
UMR-45 Baker River IHC	4	Anafi	DIV Z	0600	2200	IR	H-544AS (A-60)	4AS	AS350B3	Chelan	0800	0900	Assigned HLCO
UMR-46 Entiat IHC	4	Anafi	DIV A	0600	2200	IR							

# INCIDENT RADIO COMMUNICATIONS PLAN (ICS 205)

Controlled Unclassified Information//Basic

<b>1. Incident Name:</b>	<b>2. Date/Time Prepared:</b>	<b>3. Operational Period:</b> 0700-2100	
PIONEER	Date: 07/07/2024 Time: 2000	Date/Time From: 07/08/2024 0700 MON	Date/Time To: 07/08/2024 2100 MON

**4. Basic Radio Channel Use:**

Zone Group	Ch #	Function	Channel Name/Trunked Radio System Talkgroup	Assignment	RX Freq	RX Tone/NAC	TX Freq	TX Tone/NAC	Mode (A,D, or M)	Remarks
	1	TACTICAL	TAC 1	DIV D & S / FIRING GRP	168.0500	123.0	168.0500	123.0	A	
	2	TACTICAL	TAC 2	DIV A / CONT	168.2000	123.0	168.2000	123.0	A	
	3	TACTICAL	TAC 3	LAKE SHORE	168.6000	123.0	168.6000	123.0	A	
	4	TACTICAL	TAC 4	STRUCTURE	166.7250	123.0	166.7250	123.0	A	
	5	TACTICAL	TAC 5	ROADS / STAGING	166.7750	123.0	166.7750	123.0	A	
	6	TACTICAL	TAC 6	BOAT	168.2500	123.0	168.2500	123.0	A	
	7	COMMAND	CMD 7	ALL	168.4750	123.0	165.4000	123.0	A	CHELAN BUTTE
	8	COMMAND	CMD 8	ALL	169.5375	123.0	164.7125	123.0	A	OLD MAID MTN
	9	COMMAND	CMD 9	ALL	170.4500	123.0	168.1000	123.0	A	MOORE MTN
	10	COMMAND	CMD 10	ALL	170.0125	123.0	165.2500	123.0	A	SLIDE RIDGE
	11	COMMAND	CMD 11	ALL	170.4125	123.0	165.9625	123.0	A	FOX PEAK
	12	AIR TO GROUND	A/G PRI	ALL DIVS	169.1500	000.0	169.1500	000.0	A	
	13	AIR TO GROUND	A/G SEC	ALL DIVS	168.4000	000.0	168.4000	000.0	A	
	14	AIR TO GROUND	A/G 3	ALL DIVS	166.6125	000.0	166.6125	000.0	A	TAKE OFF/LANDING
	15	AIR TO GROUND	VMED 29	ALL DIVS	155.3475	156.7	155.3475	156.7	A	AIR EMS COORD
	16	AIR GUARD	AIRGUARD	ALL DIVS	168.6250	000.0	168.6250	110.9	A	EMERG AIRCRAFT CONTACT

**5. Special Instructions:** 24-HOUR STAFFING: PIONEER COMMUNICATIONS PHONE NUMBER: (208) 891-8093 / CURRENT CLOSE "PIE 6-21"

<b>6. Prepared By</b> (Communications Unit Leader)	Name: MISSY PARKER	Signature: <i>Missy Parker</i>
ICS 205	IAP Page	Date/Time: 07/07/2024 2000

# INCIDENT RADIO COMMUNICATIONS PLAN (ICS 205)

Controlled Unclassified Information//Basic

<b>1. Incident Name:</b>	<b>2. Date/Time Prepared:</b>	<b>3. Operational Period:</b> 0700-2100	
PIONEER - Branch IV & V	Date: 07/07/2024 Time: 2000	Date/Time From: 07/08/2024 0700 MON	Date/Time To: 07/08/2024 2100 MON

**4. Basic Radio Channel Use:**

Zone Group	Ch #	Function	Channel Name/Trunked Radio System Talkgroup	Assignment	RX Freq	RX Tone/NAC	TX Freq	TX Tone/NAC	Mode (A,D, or M)	Remarks
	1	TACTICAL	TAC 1	DIV D & S / FIRING GRP	168.0500	123.0	168.0500	123.0	A	
	2	TACTICAL	TAC 2	DIV A / CONT	168.2000	123.0	168.2000	123.0	A	
	3	TACTICAL	TAC 3	LAKE SHORE	168.6000	123.0	168.6000	123.0	A	
	4	TACTICAL	TAC 4	STRUCTURE	166.7250	123.0	166.7250	123.0	A	
	5	TACTICAL	TAC 5	ROADS / STAGING	166.7750	123.0	166.7750	123.0	A	
	6	TACTICAL	TAC 6	BOAT	168.2500	123.0	168.2500	123.0	A	
	7	AIR TO GROUND	A/G PRI	ALL DIVS	169.1500	000.0	169.1500	000.0	A	
	8	AIR TO GROUND	A/G SEC	ALL DIVS	168.4000	000.0	168.4000	000.0	A	
	9	AIR TO GROUND	A/G 3	ALL DIVS	166.6125	000.0	166.6125	000.0	A	
	10	COMMAND	CMD 10	ALL	170.0125	123.0	165.2500	123.0	A	SLIDE RIDGE
	11	COMMAND	CMD 11	ALL	170.4125	123.0	165.9625	123.0	A	FOX PEAK
	12	COMMAND	CMD 12	ALL	170.6875	123.0	166.5750	123.0	A	GOAT MTN
	13	COMMAND	GOAT	ALL	172.3500	146.2	165.0125	118.8	A	GOAT MTN
	14	COMMAND	MCLUR	ALL	172.3500	146.2	165.0125	103.5	A	MCLURE MTN
	15	AIR TO GROUND	VMED 29	ALL DIVS	155.3475	156.7	155.3475	156.7	A	AIR EMS COORD
	16	AIR GUARD	AIRGUARD	ALL DIVS	168.6250	000.0	168.6250	110.9	A	EMERG AIRCRAFT CONTACT

**5. Special Instructions:** 24-HOUR STAFFING: PIONEER COMMUNICATIONS PHONE NUMBER: (208) 891-8093 / CURRENT CLOSE "IV"

<b>6. Prepared By</b> (Communications Unit Leader)	Name: MISSY PARKER	Signature: <i>Missy Parker</i>
ICS 205	IAP Page	Date/Time: 07/07/2024 2000



# INCIDENT RADIO COMMUNICATIONS PLAN (ICS 205)

Controlled Unclassified Information//Basic

<b>1. Incident Name:</b>	<b>2. Date/Time Prepared:</b>	<b>3. Operational Period:</b> 0700-2100	
PIONEER - IA N Chelan	Date: 07/07/2024 Time: 2000	Date/Time From: 07/08/2024 0700 MON	Date/Time To: 07/08/2024 2100 MON

**4. Basic Radio Channel Use:**

Zone Group	Ch #	Function	Channel Name/Trunked Radio System Talkgroup	Assignment	RX Freq	RX Tone/NAC	TX Freq	TX Tone/NAC	Mode (A,D, or M)	Remarks
	1	COMMAND	FIRE 1 RP		154.4300	110.9	153.8900	D051	A	LOCAL DISPATCH
	2	COMMAND	NORTH COM RP		155.3550	100.0	150.7900	100.0	A	
	3	TACTICAL	GOAT TAC RP		159.0675	110.9	153.8000	100.0	A	GOAT MTN
	4	TACTICAL	ORANGE		154.2650	107.2	154.2650	107.2	A	
	5	TACTICAL	BLACK		154.3400	151.4	154.3400	151.4	A	
	6	TACTICAL	DNR COMMON		151.4150	103.5	151.4150	103.5	A	
	7	COMMAND	DNR CHELAN RP		159.2250	156.7	151.4750	156.7	A	CHELAN BUTTE
	8	AIR TO GROUND	DNR A/G 1		159.2700	103.5	159.2700	103.5	A	
	9	COMMAND	BUTTE TAC RP		155.1225	192.8	159.0675	162.2	A	CHELAN BUTTE
	10	TACTICAL	FS WEN TAC		167.5500	000.0	167.5500	000.0	A	
	11	COMMAND	FS GOAT RP		169.8750	146.2	172.3500	118.8	A	GOAT MTN
	12	COMMAND	FS SLIDE RP		173.0500	146.2	164.9125	141.3	A	SLIDE RIDGE
	13	AIR TO GROUND	FS A/G 40		167.4500	000.0	167.4500	000.0	A	
	14	TACTICAL	FS TAC		168.2000	000.0	168.2000	000.0	A	
	15	COMMAND	FS BADGER RP		173.0500	146.2	164.9125	127.3	A	BADGER MTN
	16	TACTICAL	REDNET		153.8300	000.0	153.8300	000.0	A	

**5. Special Instructions:** 24-HOUR STAFFING: PIONEER COMMUNICATIONS PHONE NUMBER: (208) 891-8093 / CURRENT CLOSE "IA N CHELAN"

<b>6. Prepared By</b> (Communications Unit Leader)	Name: MISSY PARKER	Signature: <i>Missy Parker</i>
ICS 205	IAP Page	Date/Time: 07/07/2024 2000

## **Resource Advice**

Lead READ: Eireann Pederson 360-854-8197, [eireann.pederson@usda.gov](mailto:eireann.pederson@usda.gov)

REAF: Brigitte Ranne 509-663-6118, [brigitte.ranne@usda.gov](mailto:brigitte.ranne@usda.gov)

REAF: Hector Rodriguez 509-393-5379, [Hector.Rodriguez3@usda.gov](mailto:Hector.Rodriguez3@usda.gov)

REAF: Carrissa Camenson 360-899-7147, [carissa.camenson@usda.gov](mailto:carissa.camenson@usda.gov)



Resource Guidelines

### *MIST for Spike Camp and Lucerne Forward Operating Base Management*

- Employ minimum impact suppression tactics (MIST) where feasible, especially in remote or sensitive areas.
- If spike camps are necessary, use existing, or previously impacted campsites where available. If existing campsites are not available; use your local resource advisor to help identify the most resilient sites in rocky or sandy soils. Avoid camping in wet meadows, along streams, or on lake shores.
- Store food properly so that it is not accessible to wildlife. Consider hanging food in trees at least 15 feet off the ground and 5 feet from the trunk of the tree, or store food in sealable containers. Store food away from the campsite (300 feet is ideal) to reduce the risk of human and bear (and rodent!) conflicts.
- Do not let garbage and food scraps accumulate in camp. All garbage and food scraps need to be removed from the camp ASAP and before leaving the site.
- Minimize disturbance to land in preparing bedding and campfire sites. Do not clear vegetation, trench, or excavate a flat spot to create bedding sites.
- Do not use nails in trees. Don't construct camp furniture.
- If a campfire is built for warmth in the evening, build either a pit or mound fire. Use dead and down firewood. Use small diameter wood that burns down more cleanly. Don't burn plastics or aluminum - pack it out with the rest of the camp garbage.
- In small spike camp situations (not Lucerne), individuals should use the "cat-hole" method of disposing of human waste. Toilet seats should be located a minimum of 200 feet from water sources. Holes should be dug 6-8 inches deep.
- In large or long term spike the camps use helicopters, boats, or pack stock to deliver portable backcountry latrines and remove human waste if necessary. If the camp does not have adequate pack, boat, or air support for human waste management, establish community latrines well away from water sources and common areas. Use human waste bags, if necessary

### *Dipping and Drafting*

- No cross-dipping between water bodies. All buckets or snorkels should be cleaned, inspected, and dried in the sun if they must be used between lakes. Dipping in small lakes must be pre-approved by the READ or AA.
- When drafting, use already disturbed areas for stream access (road crossings, dispersed campsites) to reduce the need for riparian vegetation clearing.
- Use screens (3/32" inch) for all pumping operations.
- Use containment pads and basins under pumps and fuel cans. Ensure a spill kit is present with every operating pump.

### *Invasive Species*

- The fire is burning within an infestation of common crupina, a WA State Class A Noxious weed. Prevent spread of crupina off site – plan to wash hose and other equipment. Request fire fighters brush boots before boarding boat or before entering National Park Service Land.
- Inspect slings and remove all plant/soil material prior to use.
- Ensure all camps, staging areas, helispots and cargo areas are free of invasive plants to prevent spread to un-infested areas.
- Weed wash all vehicles, including boats, when they arrive to the incident and when demobed.

### *Fisheries /Aquatic Recommendations*

- If trees must be felled in riparian areas for suppression or safety reasons, fell them toward streams where possible and minimize bucking where possible.
- Non-mechanized suppression activities are recommended within Riparian Reserves (150-300 ft from stream channel). For example, consider hand lines instead of dozer lines when feasible.

### *Retardant Use*

- Retardant avoidance areas are present in the fire suppression area for both aquatic and terrestrial species.
- Track all retardant drops – locations and amounts.
- Report all mis-applications ASAP to READ. Monitoring and reporting of misapplications is required.

### *Wet Meadows*

- No line or other disturbance in wet meadows in the Summer Blossom area (east of South Navarre campground above and below the 8200 road) and at Coyote and Poison Springs at the headwaters of their respective creeks.

### *Dry Meadows*

- Minimize disturbance from staging and parking areas in dry meadows. These areas recovery slowly and are vulnerable to invasive plant infestation.

### *White Bark Pine*

- Avoid cutting white bark pine whenever possible. Needles of 5 keep it alive! Ask READ for help with ID.

### *Burnout operations*

- Plan to protect whitebark pine of all ages and mature cold and moist forest during burnouts. READ consultation and line officer approval is required for burn plans that include these forest types.
- During burnouts modify firing to retain large trees, large snags and large down wood in forests whenever possible.
- Minimize total acres burned in burnouts.
- Incorporate typical resource protection measures used in RX burning whenever it is safe and practical to do so (such as retention of green islands in moist areas).
- Provide a map of areas that were burned as part of the burnout operation (for use in emergency consultation).
- If cultural resources are discovered during suppression activities, leave on site and notify READ.

# PIONEER US-WA-SES-000173

## Demob List for Monday 7/8/2024

EQUIPMENT			
E-69	0800	FTRA	MORRIS FORESTRY LLC
E-146	0815	OFFT	SNOHOMISH FD 26 ICP TRAILER
OVERHEAD			
O-76	0730	EMPF	LINACRE, BRIAN
O-187	0915	WFM1	GRASS LAKE WFM
O-225	0730	COMT	JUDD, KEVIN
O-227	0900	FACL	DROTT, PETER NICHOLAS
O-230	0700	ABRO	PFLUGH, KRISTOPHER (VIRTUAL DEMOB)
O-231	0700	ABRO	NOBLE, BENJAMIN (VIRTUAL DEMOB)
O-235	0815	REAF	SIMPSON, CADE RYAN
O-236	0900	HEBM	MCLANDRESS, RANDY (VIRTUAL DEMOB)
O-360	0830	SOPL	FUNDERBURK, GREG
O-269	0900	EQTR	KNIGHT, CHASE
O-327	0915	FSCC	ANDRESEN, ANDREA

## Demob List for Tuesday 7/9/2024

CREW			
C-19	0700	CR2I	OWF CLE ELUM
EQUIPMENT			
E-5	1000	STK2	SPARTAN RESPONSE TEAM LLC. - D58579
E-7	1200	POT2	TRYWAYS INC - 956202
E-9	1200	HND1	THE GENERAL CONTRACTOR, LLC - 522436
E-48	1200	HND1	PREMIER SERVICES & EQUIPMENT LLC - 083836
E-58	1000	STMH	WELLER - B62115
E-95	1200	GWT2	W W PUMPING SERVICE - 128831
OVERHEAD			
O-96	0830	SEC2	HITT, WILLIAM EUGENE
O-127	0715	FMOD	DAVID RAINS -FM-01 - CWCFFMOD LWD 8
O-128	0715	FMOD	DAVID RAINS - -FM-02 - CWCFFSCC
O-136	0700	EMPF	MEDINA, STEVE FRED
O-174	0900	EQPM	HAWKINSON, COLBY M
O-182	0900	WFM1	MODULE - WILDLAND FIRE - T1- USFS - SELWAY
O-216	0800	RADO	DE LEON JR, ERNESTO HENRY
O-222	0815	RCDM	RICHARDS, DAVID DANIEL
O-232	0800	HMGB	FRIOLI, JOANN
O-243	0730	HEQB	SANTILLAN, EVERARDO
O-347	0830	THSP	BYRD, DANIEL HOWARD

## Demob List for Wednesday 7/10/2024

<b>CREWS</b>			
C-20	0900	CRWC	COLUMBIA BASIN JOB CORPS
<b>EQUIPMENT</b>			
E-106	1200	FUT2	GREEN PETROLEUM, LLC - 430602
<b>OVERHEAD</b>			
O-43	0730	REMS	BEYOND THE EDGE LLC
O-178	0715	TFLD	SCHAFFRAN, ANDREW WARREN
O-179	0730	TFLD	HUMBERT, CHARLES RAE
O-199	0830	THSP	STEADY, WILL
O-229	0700	HEBM	PEILA, ANIKA E
O-239	0730	TFLD	GARRIE, KORY M
O-241	0700	HEQB	GREEN, JASON MATTHEW
O-248	0745	TFLD	WARD, JASON HENRY
O-249	0745	TFLD	HARPER, MARK THOMAS
O-255	0700	SEC1	SEYLER, ARTHUR
O-257	0800	TFLD	MCDONALD, CRAIG J
O-278	0715	SMOD	CREW 84
O-355	0800	TFLD	CONWAY, JASON HERBERT



## **Check In Message**

- Please complete the virtual check-in process via the QR code on the front cover.
- You are not checked in until you provide the following:
  - 1) Red Cards
  - 2) Roster/Manifest
- Please email documents to: [2024.pioneer.checkin@firenet.gov](mailto:2024.pioneer.checkin@firenet.gov)

Any Questions:

Phone: 509-661-5372

Email: [2024.pioneer.checkin@firenet.gov](mailto:2024.pioneer.checkin@firenet.gov)

---

## **Demob Message**

- Fliers complete the “Air Travel Request” via the QR code on the front cover 72 hours prior to flight date.
- Return supplies to the Cache.
- Return radios, antennas, etc., to Communications.
- All contract equipment and vehicles driven in fire area will need to do weed wash.
- Contact Finance about closing out your paperwork.
- Once the above items have been completed, SCAN the QR code on the front cover and complete the demob questions.

Any Questions:

Phone: 509-661-5376

Email: [2024.pioneer.demob@firenet.gov](mailto:2024.pioneer.demob@firenet.gov)



## Human Resource Message

### **PIONEER FIRE July 8, 2024**

The behavior on this incident has been EXCELLENT! Keep it up! Please remind your folks to practice Mutual Respect as you complete your assignments. We are all professionals here. For those of you that are new here is a reminder of our expectations.

Each individual on this incident is responsible for:

- Being ready and able to perform their assigned duties effectively, and
- Conducting themselves appropriately at all times.

There is **ZERO tolerance** for inappropriate behavior while assigned to this incident, including such conduct as:

- Drug and alcohol use
- Discrimination
- Sexual harassment
- Hostile Work Environment
- Lewd comments, off color jokes, rumor, innuendo, name calling, etc.

### **Consequences?**

Anything less than strict adherence to these guidelines may result in immediate dismissal from the incident.

IF there is anything our team can do **for you** or if you see something that needs our attention please let us know.

Margaret Dietrich, Human Resources  
If you have questions call 360-701-3154

Union Representation Local 34, Katijo Maher  
360-677-2414 Katijo.Maher@usda.gov

## FINANCE MESSAGE

**Finance Email:** [2024.pioneer.finance@firenet.gov](mailto:2024.pioneer.finance@firenet.gov)

**Finance Phone:** 484-501-1835

**This incident requires electronic documentation.** Please email your time to the address above. Scanned PDF's please, no .JPG's. Feel free to call finance for help if needed. Scanners are also available at ICP.

### Required Documents

Overhead, Agency Crews & Cooperators	Contract Resources
<b>Finance docs needed:</b> Resource Order, Manifest, Cooperative Agreement, Casual Hire Form w/ECI# (as applicable)	<b>Finance docs needed:</b> Resource Order, Manifest, Full Contract/Agreement, Certifications ( <i>if required</i> ) Pre-Inspection
<b>Daily:</b> CTRs, Shift Tickets  <b>CTRs should be named as:</b> CTR_RO#_YYMMDD-DD (Ex: CTR_O235_240605-07)  Electronic CTR available! Use QR code on front cover	<b>Daily:</b> CTRs, Shift Tickets, receipts (claims, etc.) <b>NOTE: Document travel times and odometer readings</b>  <b>Shift Tickets should be named as:</b> ST_RO#_YYMMDD-DD (Ex: ST_E5_240623-27)  Electronic shift ticket available! Use QR code on front cover
<b>Demob:</b> Signed OF-288; Signed OF-286	<b>Demob:</b> Contractor Evaluations, Shift Tickets, receipt(s) for Addition/Deductions, Post-Inspection, Signed OF-286
<p><b>“H-Pay”- Entitlement to Hazardous Pay Differential (5 CFR 550.904) – Hazard pay MUST be supported by a justification. If justification is not provided, you chance losing your entitlement.</b></p>	<p><b>Please call finance regarding issues with your time:</b></p> <p>No one on List today, <b>any questions for Finance, please email us.</b></p> <p><b>Thank You.</b></p>

Incident Name: **Pioneer**

Incident Number: **WA-SES-000173**

Financial codes:

WA DNR – **221-LDW**

DOI – **RZ79**

USDA – **PNRZ79 (1522)**

**Please make sure you check in using QR code on the front of the IAP and then email your time daily.**

**THANK YOU!!**



PIONEER FIRE  
**LOGISTICS MESSAGE**

	PIONEER FIRE ICP	LUCERNE FOB
Kitchen	Breakfast 0530-0900 Dinner 1800-2100	Breakfast 0600-0900 Dinner 2030-2130
Lunch/Water/Ice	0500-2100	Pick up with Breakfast
Shower	0500-1200 1400-2200	0500-1200 1400-2200
Supply	0600-2200	0600-2200
Fuel Tender	0700-2100	
Ground Support	0700-2100	
Weed Wash	0700-1400 1600-2000	

**CONTACT INFORMATION**

UNIT	EMAIL	PHONE
Finance	2024.pioneer.finance@firenet.gov	(484) 501-1835
Ordering	2024.pioneer.ordering@firenet.gov	(484) 501-1821
Ground Support		Dave (509) 688-7144 Mark (360) 520-5232
Check-In	2024.pioneer.checkin@firenet.gov	(509) 661-5372
Demob	2024.pioneer.demob@firenet.gov	(609) 661-5376
Situation	2024.pioneer.situation@firenet.gov	
Resources	2024.pioneer.resources@firenet.gov	
Planning	2024.pioneer.plans@firenet.gov	
Documentation	2024.pioneer.docs@firenet.gov	



# Example GM (ICS213) for Boat Transportation

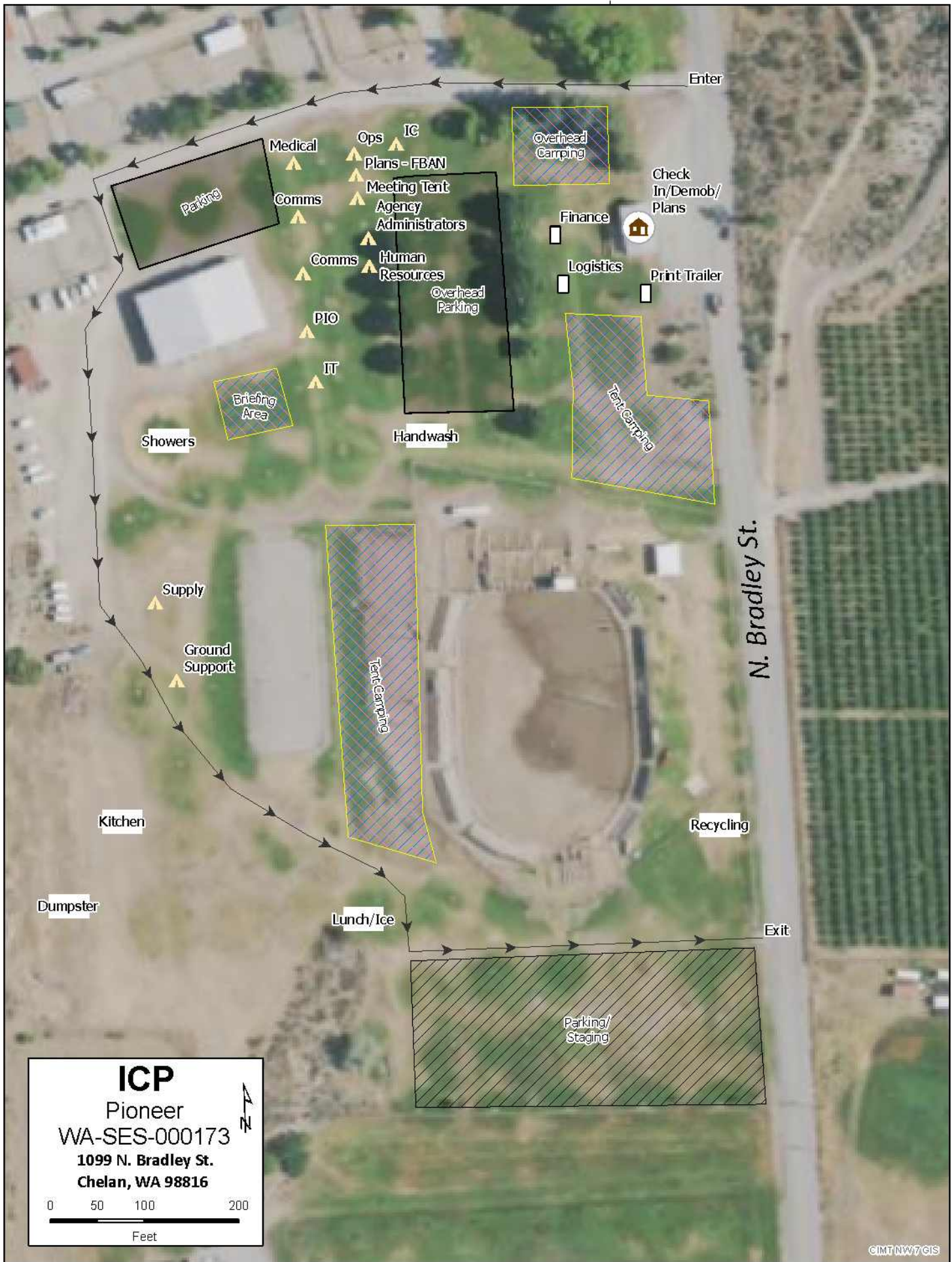
**\*\* WHEN ARRANGING BOAT TRANSPORTATION USE THE FOLLOWING \*\***

**Nathan Crawford, DIVS, 541-219-1374, [Nathan\\_crawford@fws.gov](mailto:Nathan_crawford@fws.gov)**

**Seth Ellis, DIVS (T), 509-860-3290, [seth.ellis453@gmail.com](mailto:seth.ellis453@gmail.com)**

## GENERAL MESSAGE (ICS 213)

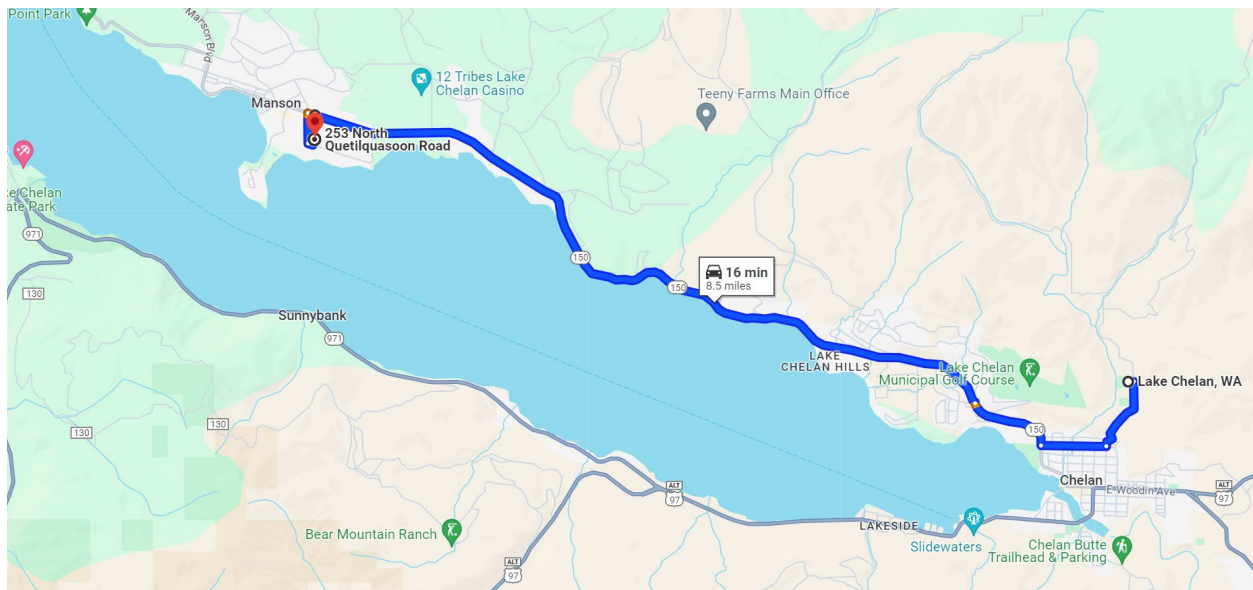
<b>1. Incident Name</b> (Optional): Pioneer Fire		
<b>2. To</b> (Name and Position): Nate Crawford DIVS/Seth Ellis- Boat DIVS(t)		
<b>3. From</b> (Name and Position):		
<b>4. Subject:</b> Ferry Tickets	<b>5. Date:</b>	<b>6. Time</b>
<b>7. Message:</b> <p style="text-align: center;">SAMPLE GENERAL MESSAGE FORM WITH REQUIRED INFORMATION</p> <p>O or C # _____</p> <p>Departure Date _____</p> <p>Ferry Ticket Departure Location (Chelan/Fields Point/Lucerne/Stehekin) _____</p> <p>Ferry Ticket Arrival Location (Chelan/Fields Point/Lucerne/Stehekin) _____</p> <p>Email address for confirmation _____</p> <p>* If unable to receive email, please note and tickets will be emailed to either your DIVS or the Boat Coordinator.*</p> <p>Phone #: _____</p> <p>FERRY TICKETS NEED TO BE SUBMITTED TO BOAT DIVS BY 1600 THE DAY PRIOR OF DESIRED DEPARTURE.</p> <p>IT IS PREFERRED FORMS ARE SUBMITTED 48 HRS PRIOR TO KNOWN AND SET LWD.</p>		
<b>8. Approved by:</b> Name: _____ Signature: _____ Position/Title: _____		
<b>9. Reply:</b>		
<b>10. Replied by:</b> Name: _____ Position/Title: _____ Signature: _____		
<b>ICS 213</b>	Date/Time: _____	



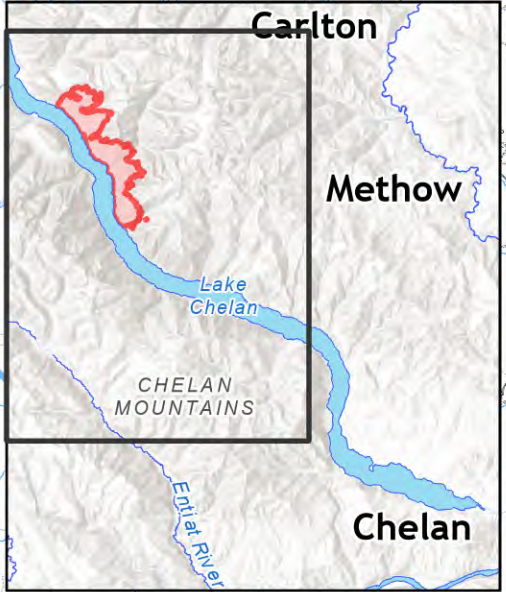
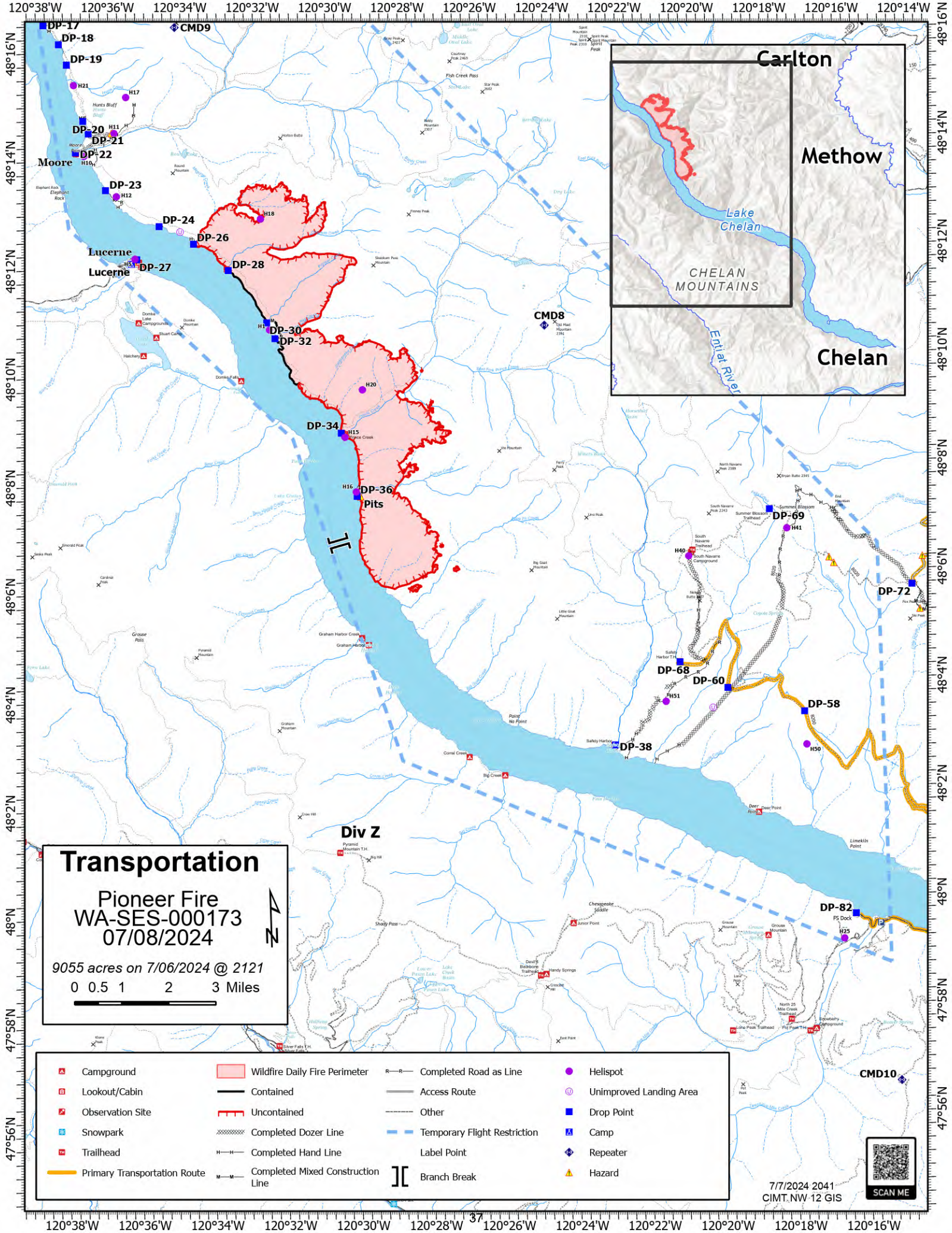
## Driving Directions from Chelan Rodeo Grounds to Manson FOB

- Head south toward Chelan on N Bradley St from ICP for .6 miles
- Turn Right onto E. Gibson Road – travel for .5 miles
- Turn Right onto WA-150/W Manson Road toward Manson
- Continue on WA-150 for approximately 6 miles
- Turn left onto S Quetilquassoon Road – Just past Manson Bay Market and Gas Station (on the left)
- Manson FOB will be approximately 1 block on the left.

Manson FOB is located in a vacant field just north of 253 S. Quetilquassoon Road.







**Transportation**  
**Pioneer Fire**  
**WA-SES-000173**  
**07/08/2024**

9055 acres on 7/06/2024 @ 2121

0 0.5 1 2 3 Miles


7/7/2024 2041  
 CIMT.NW.12.GIS





# Public Information

**PHOTOS:** Your fireline photos help us build understanding with the public. Community members want to see what you see because you go where others can't safely go. We are looking for any pictures of the fire line, mop-up work, and **fire resources working on the fire line in their PPE**. You can send photos to:

Email: [2024.pioneer@firenet.gov](mailto:2024.pioneer@firenet.gov)  
Text: 509-388-1475

As always, make sure you're wearing all your PPE and conveying a professional, caring, and respectful attitude toward the homes and land in this community. Thanks for helping us out!

**LOST AND FOUND:** We have a few items in the Information yurt, just inside the door to the left. If you have lost something, please stop by and see if it has been turned in. If you find something left around camp, you can turn it in to us.

**QUESTIONS FROM THE PUBLIC:** If community members have questions that you do not feel equipped to answer professionally, please give them our fire information line: 541-861-5808.





# EMERGENCY PLAN INCIDENT WITHIN AN INCIDENT

## ON SCENE INCIDENT COMMANDER

In the event of an accident or medical incident of any size, your primary responsibility is to ENSURE that the victim(s) receive prompt and effective Triage, Treatment, Extrication and Transport.

- **ENSURE THE MEDICAL INCIDENT REPORT IN THE INCIDENT ACTION PLAN IS BEING USED AND FOLLOWED- \*IF DETERMINED TO BE A GREEN, DO NOT DECLARE EMERGENCY TRAFFIC AND ONLY COMPLETE LINE 1-4 ON MIR\*.**
- Conduct size-up of the incident nature of accident, number type of resources involved, latitude and longitude location (DD°MMM.MM format): notify incident communications center and supervisor, request assistance as needed.
- Order and coordinate medical and support response to the accident.
- Evaluate special needs (law enforcement, haz mat, etc.).
- Clear the command frequency if medical emergency, coordinate with incident communications and air attack for air medical transportation needs.
- Preserve and photograph the scene for accident investigation.
- Remain aware of surroundings and the status of the main incident (delegate personnel to monitor the main fire) to ensure safety of medical treatment personnel.
- Until relieved, supervise and manage all personnel involved at the incident scene.



## MEDICAL PLAN (206 WF)

1. Incident/Project Name			2. Operational Period				
<b>Pioneer Fire</b>			Date/Time: <b>07/08/24 0700-2100</b>				
3. Ambulance Services							
Name	Complete Address	Phone	Advanced Life Support (ALS)				
			Yes	No			
Lake Chelan EMS	Chelan, WA	911	X				
Douglas/Okanagan County Fire	Brewster, WA	911		X			
Aero Methow EMS	Twisp, WA	911	X				
4. Air Ambulance Services							
Name	Phone/Channel	Frequency, Type of Aircraft & Capability					
Life Flight - Brewster	1-800-232-0911 911	VMED 29, Rotor, ALS, 24 hr					
Airlift NW - Wenatchee	1-800-426-2430 911	VMED 29, Rotor, ALS, 24 hr					
Medivac Ship	Command 7,8,9,10,11,12 (Linked)	VMED 29, Rotor, BLS, Daytime					
Mount Rainer Short Haul	Command 7,8,9,10,11,12 (Linked)	VMED 29, Rotor, BLS, Daytime, Short Haul					
Snohawk 10 - Snohomish	1-800-258-5990 911	VMED 29, Rotor, ALS, Daytime, Hoist					
Spokane County Hoist - Spokane	1-509-532-8930 911	VMED 29, Rotor, ALS, 24 hr, Hoist Daytime Only					
5. Hospitals							
Name	Degrees Decimal Minutes	Travel Time From Fire		Phone	Helipad		Level of Care
		Air	Boat		Yes	No	
Lake Chelan Health 110 S. Apple Blossom Drive Chelan WA	Lat: 47° 50' 20 N	30 Min	3 Hr	509-683-2474		X	Level IV Trauma
	Long: 119° 59' 20 W						
Central Washington Hospital (Confluence Health Central Campus) 1201 S. Miller Wenatchee WA	Lat: 47° 24. 43 N	1 Hr	4 Hr	509-433-3115	X		Level III Trauma
	Long: 120° 19. 28 W						
Harborview Medical Center 325 9 <sup>th</sup> Ave Seattle WA	Lat: 47° 36. 24 N	1.5 Hr	6 Hr	206-744-4025	X		Level I Trauma Burn Center
	Long: 122° 19. 45 W						
<b>ICP</b>	<b>EMS Responders &amp; Capability:</b>		Diana Braun		MEDL/EMTF	509-348-0091	
			Ben Elkind		MEDL(T)/EMTF	503-201-2495	
			Cass Monroe		MEDL(T)/EMTF	509-724-0843	
	Equipment Available on Scene:		AED, O2, OTC meds				
	Medical Emergency Channel:		Command 7, 8, 9, 10, 11 (Linked)				
	ETA for Ambulance to Scene:						
	Air:		NA				
	Ground:		15 Min				
Approved Heli-Spot:		NA					
Lat:		NA					
Long:		NA					
<b>LUCERNE FOB</b>	<b>EMS Responders &amp; Capability:</b>		Londa Van Kirk		MEDL/EMTF (Lucerne FOB)	360-815-7645	
			MEDIC 9 Benjamin McCall		(Air Medical)	360-420-6492	
			EMT 4 Justin Dominguez		(Boat Medical)	509-741-0611	
			MEDIC 10 Sean Hendron		(Boat Medical)	443-851-2014	
	Equipment Available on Scene:		ALS Kit, AED, O2, OTC meds				
	Medical Emergency Channel:		Command 7, 8, 9, 10, 11 (Linked)				
	ETA for Ambulance to Scene:						
	Air:		2 hr				
Water/Ground:		3 hr					
Approved Heli-Spot:							
Lat:		H5 48° 12.1624' N					
Long:		120° 35.4476' W					
<b>BRANCH I/II DIV A</b>	<b>EMS Responders &amp; Capability:</b>		EMT 5 Dave Repnik		(DIV A)	509-881-4771	
			MEDIC 12 Ethan Biederman		(DIV A)	513-882-2837	
	Equipment Available on Scene:		ALS Kit, Monitor/Defib, O2				
	Medical Emergency Channel:		Command 7, 8, 9,10, 11 (Linked)				
	ETA for Ambulance to Scene:						
	Air:		2 hr				
	Water/Ground:		3 hr				
	Approved Heli-Spots:						
	H1	48° 10.813' N	H11	48° 14.492' N	H15	48° 08.754' N	
		120° 31.925' W		120° 35.922' W		120° 29.813' W	
	H10	48° 14.099' N	H12	48° 13.381' N	H16	48° 07.744' N	
		120° 36.782' W		120° 35.919' W		120° 29.541' W	
Lat:		NA					
Long:		NA					

## MEDICAL PLAN (206 WF)

<b>BRANCH I/II DIV D</b>	<b>EMS Responders &amp; Capability:</b>	<b>REMS 2 Brayden Kirk + 3 (DIV D) 509-264-8203 Jed Getman MEDL(T)/AEMF (Stehekin FOB) 541-391-3243</b>
	Equipment Available on Scene:	ALS Kit, Monitor/Defib, O2, Rescue Gear
	Medical Emergency Channel:	Command 7, 8, 9, 10, 11 (Linked)
	ETA for Ambulance to Scene:	
	Air:	2 hr
	Ground:	3 hr
	Approved Heli-Spot:	
	Lat:	<b>H14 48° 20.760' N</b>
Long:	<b>120° 43.242' W</b>	
<b>BRANCH IV DIV S Contingency Roads Firing</b>	<b>EMS Responders &amp; Capability:</b>	<b>MEDIC 7 Steve Drab (CONTINGENCY) 406-600-2059 AMBO 2 Anna Reynolds (CONTINGENCY) 509-768-5519 MEDIC 13 Anthony Bylski (CONTINGENCY) 248-752-5511 MEDIC 11 Savannah Mclaughlin (DIV S) 435-590-4952 REMS 1 Ray Storm + 4 (DIV S) 415 637-0491 MEDIC 15 Robert Ruzala (DIV S)</b>
	Equipment Available on Scene:	ALS Kit, Monitor/Defib, O2, Rescue Gear
	Medical Emergency Channel:	Command 7, 8, 9, 10, 11,12 (Linked)
	ETA for Ambulance to Scene:	
	Air:	2 hr
	Ground:	3 hr
	Approved Heli-Spot:	NA
	Lat:	NA
Long:	NA	
<b>BRANCH V Staging Structure Boat Lake Shore</b>	<b>EMS Responders &amp; Capability:</b>	<b>MEDIC 8 Rick Kelly (Lake Shore) 509-290-3922 MEDIC 14 Laura Krause (Lake Shore) 360-880-3414</b>
	Equipment Available on Scene:	ALS Kit, Monitor/Defib, O2, Rescue Gear
	Medical Emergency Channel:	Command 7, 8, 9, 10, 11, 12 (Linked)
	ETA for Ambulance to Scene:	
	Air:	2 hr
	Ground:	3 hr
	Approved Heli-Spot:	
	Lat:	<b>H25 47° 59.200' N</b>
Long:	<b>120° 16. 521' W</b>	
<b>TBD</b>	<b>EMS Responders &amp; Capability:</b>	TBD
	Equipment Available on Scene:	
	Medical Emergency Channel:	Command 7,8,9,10,11 (Linked)
	ETA for Ambulance to Scene:	
	Air:	
	Ground:	
	Approved Heli-Spot:	NA
	Lat:	NA
Long:	NA	
<b>TBD</b>	<b>EMS Responders &amp; Capability:</b>	TBD
	Equipment Available on Scene:	
	Medical Emergency Channel:	Command 7,8,9,10,11 (Linked)
	ETA for Ambulance to Scene:	
	Air:	
	Ground:	
	Approved Heli-Spot:	NA
	Lat:	NA
Long:	NA	

Prepared By (Medical Unit Leader)	Date	Reviewed By (Safety Officer)	Date
Ben Elkind MEDLt	07/07/24	Josh Northrup SOFC	07/07/24
Signature: <i>Ben Elkind</i>		Signature: <i>Josh Northrup</i>	

# MEDICAL PLAN (ICS 206 WF)

Controlled Unclassified Information//Basic

## Medical Incident Report

**FOR A NON-EMERGENCY INCIDENT, WORK THROUGH CHAIN OF COMMAND TO REPORT AND TRANSPORT INJURED PERSONNEL AS NECESSARY.**

**FOR A MEDICAL EMERGENCY: IDENTIFY ON SCENE INCIDENT COMMANDER BY NAME AND POSITION AND ANNOUNCE "MEDICAL EMERGENCY" TO INITIATE RESPONSE FROM IMT COMMUNICATIONS/DISPATCH.**

Use the following items to communicate situation to communications/dispatch.

1. CONTACT COMMUNICATIONS / DISPATCH (**Verify correct frequency prior to starting report**)

*Ex: "Communications, Div. Alpha. Stand-by for Emergency Traffic."*

2. INCIDENT STATUS: *Provide incident summary (including number of patients) and command structure.*

*Ex: "Communications, I have a Red priority patient, unconscious, struck by a falling tree. Requesting air ambulance to Forest Road 1 at (Lat./Long.) This will be the Trout Meadow Medical, IC is TFLD Jones. EMT Smith is providing medical care."*

Severity of Emergency / Transport Priority	<input type="checkbox"/> RED / PRIORITY 1 Life or limb threatening injury or illness. Evacuation need is IMMEDIATE <i>Ex: Unconscious, difficulty breathing, bleeding severely, 2° – 3° burns more than 4 palm sizes, heat stroke, disoriented.</i> <input type="checkbox"/> YELLOW / PRIORITY 2 Serious Injury or illness. Evacuation may be DELAYED if necessary. <i>Ex: Significant trauma, unable to walk, 2° – 3° burns not more than 1-3 palm sizes.</i> <input type="checkbox"/> GREEN / PRIORITY 3 Minor Injury or illness. Non-Emergency transport <i>Ex: Sprains, strains, minor heat-related illness.</i>	
Nature of Injury or Illness & Mechanism of Injury		<i>Brief Summary of Injury or Illness (Ex: Unconscious, Struck by Falling Tree)</i>
Transport Request		<i>Air Ambulance / Short Haul/Hoist Ground Ambulance / Other</i>
Patient Location		<i>Descriptive Location &amp; Lat. / Long. (WGS84)</i>
Incident Name		<i>Geographic Name + "Medical" (Ex: Trout Meadow Medical)</i>
On-Scene Incident Commander		<i>Name of on-scene IC of Incident within an Incident (Ex: TFLD Jones)</i>
Patient Care		<i>Name of Care Provider (Ex: EMT Smith)</i>

3. INITIAL PATIENT ASSESSMENT: *Complete this section for each patient as applicable (start with the most severe patient)*

Patient Assessment: See IRPG page 106

Treatment:

4. TRANSPORT PLAN:

Evacuation Location (if different): *(Descriptive Location (drop point, intersection, etc.) or Lat. / Long.)* Patient's ETA to Evacuation Location:

Helispot / Extraction Site Size and Hazards:

5. ADDITIONAL RESOURCES / EQUIPMENT NEEDS:

*Example: Paramedic/EMT, Crews, Immobilization Devices, AED, Oxygen, Trauma Bag, IV/Fluid(s), Splints, Rope rescue, Wheeled litter, HAZMAT, Extrication*

6. COMMUNICATIONS: Identify State Air/Ground EMS Frequencies and Hospital Contacts as applicable

Function	Channel Name/Number	Receive (RX)	Tone/NAC *	Transmit (TX)	Tone/NAC *
COMMAND					
AIR-TO-GRND					
TACTICAL					

7. CONTINGENCY: **Considerations:** *If primary options fail, what actions can be implemented in conjunction with primary evacuation method? Be thinking ahead.*

8. ADDITIONAL INFORMATION: *Updates/Changes, etc.*

**REMEMBER:** Confirm ETA's of resources ordered. Act according to your level of training. Be Alert. Keep Calm. Think Clearly. Act Decisively.

Controlled Unclassified Information//Basic